

A vibrant field of red and yellow flowers under a bright blue sky with soft clouds. The flowers are in the foreground, and the field extends to the horizon. The sky is a mix of blue and white, with some light clouds. The overall scene is bright and cheerful.

EVERYTHING GOOD WILL ALWAYS
FLOURISH WHERE THE SUN SHINES

Widely regarded as the top ten most beautiful flowers in the world, Gazanias are well-known to thrive and remain in bloom under sunshine. Also known as treasure flowers, Gazanias are revered for their large, daisy-like composite flower heads in brilliant shades of yellow and orange.

Inspired by the sun-loving gazania flowers basking in the radiant sunshine, The Gazania aims to bring forth this glorious warmth and vibrancy to residents as they delight in their home that truly celebrates and thrives under the sun.

THE
Gazania



F R E E H O L D



LIVE ON THE
BRIGHT SIDE

THE
Gazania

Artist's Impression

Like a welcome ray of fresh sunshine, The Gazania arises as a landmark residence in a promising location that celebrates everything bright and beautiful.

The Gazania holds a coveted freehold status cocooned within the tranquility of a low-rise affluent private estate. Combining privacy and prestige with a high degree of accessibility, connectivity and convenience, this is a home composed for flourishing abundance and timeless value for generations to come.

URBAN PARADISE

The Gazania is superbly connected with an established and ever-expanding infrastructure of public transport and commuting networks that brings to you all of life's finest offerings. Revel in this urban paradise that encapsulates traditional to modern F&B delights, quality schools and enrichment institutions, and a wide array of recreational and leisure enjoyment.



 3 mins **BARTLEY MRT STATION**

Go anywhere on the island quickly and easily by taking just a 3-min walk to Bartley MRT Station along the Circle Line, where the Serangoon Interchange is only one stop away from the city's best offerings.



BIDADARI PARK

Image courtesy of the Housing & Development Board



ST. GABRIEL'S PRIMARY SCHOOL



STAMFORD AMERICAN INTERNATIONAL SCHOOL



MARIS STELLA HIGH SCHOOL



NEX SHOPPING MALL

5 mins



KOVAN HEARTLAND MALL

8 mins



CHOMP CHOMP FOOD CENTRE

9 mins



SERANGOON STADIUM

5 mins

1 stop
from Bartley MRT

SERANGOON MRT STATION

With the Serangoon MRT just a stop away, you are within close reach to Singapore's well-loved places for quintessential local delights and quality schools.



SERANGOON MRT STATION

3 stops
from Bartley MRT

PAYA LEBAR MRT STATION

Connected easily by the Paya Lebar MRT Interchange Station, Paya Lebar Central is a vibrant commercial hub that is shaping up to be a new metropolis with premium offices, exciting shopping malls, homes and excellent dining options.



GEYLANG SERAI

13 mins



KINEX SHOPPING MALL

13 mins



PAYA LEBAR CENTRAL

11 mins

Where the world revolves around you

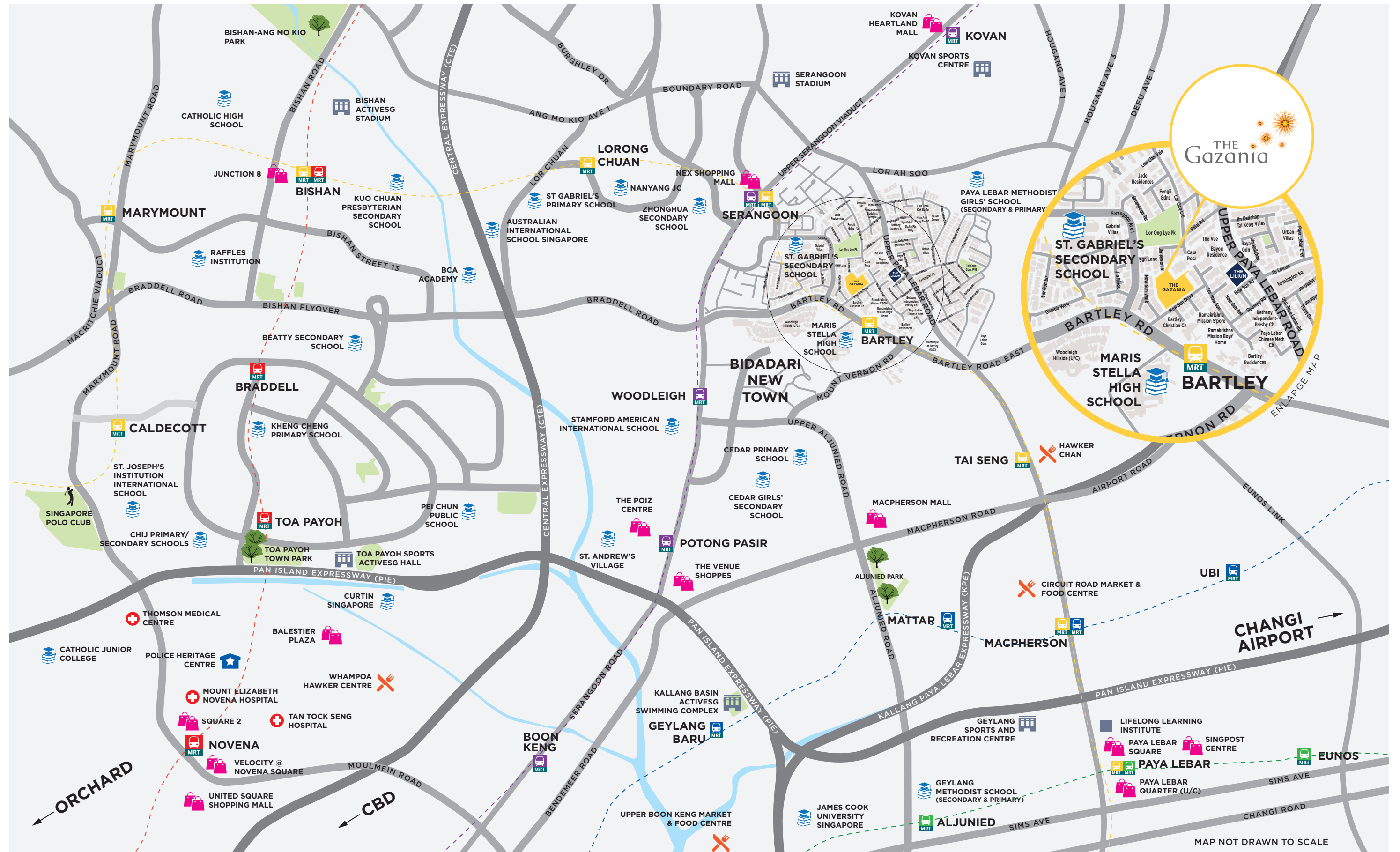
Not only does the sun always shine at The Gazania, just about everything under the sun can be found near your own sweet home.

 MRT STATIONS		 From Bartley MRT Station
The Gazania	3 mins	
Serangoon MRT Interchange North East Line / Circle Line	1 stop	 
MacPherson MRT Interchange Circle Line / Downtown Line	2 stops	 
Woodleigh MRT Station	2 stops	 
Kovan MRT Station	2 stops	 
Potong Pasir MRT Station	3 stops	 
Paya Lebar MRT Interchange Circle Line / East West Line	3 stops	 
Bishan MRT Interchange Circle Line / North South Line	3 stops	 

 SHOPPING MALLS		 From Bartley MRT Station
NEX Shopping Mall	5 mins	1 stop
Kovan Heartland Mall	8 mins	2 stops
Paya Lebar Quarter	8 mins	3 stops
Paya Lebar Square	10 mins	3 stops
SingPost Centre	10 mins	3 stops

 EDUCATION		 From Bartley MRT Station
Maris Stella High School	5 mins	-
Paya Lebar Methodist Girls' School	5 mins	-
St. Gabriel's Secondary School	6 mins	-
St. Gabriel's Primary School	7 mins	2 stops
Stamford American Int'l School	8 mins	2 stops
Cedar Girls' Secondary School	9 mins	3 stops
Cedar Primary School	9 mins	3 stops
St Andrew's Junior School	10 mins	3 stops
St Andrew's Secondary School	10 mins	3 stops
St Andrew's Junior College	11 mins	3 stops

 RECREATION		 From Bartley MRT Station
Serangoon Stadium	5 mins	1 stop
Kovan Sports Centre	7 mins	2 stops
Singapore Sports Hub	12 mins	6 stops



MAP NOT DRAWN TO SCALE



REVEAL THE BLISS OF
COMPANIONSHIP





A sense of arrival where residents and guests are greeted by an impressive canopy the moment they arrive at the entrance portal.

The Gazania suits a diverse community with 250 freehold condominium units offering a choice of 1-, 2-, 3-, 4-bedroom types and luxurious penthouses. Nestled within a predominately landed, low-rise private housing estate, The Gazania's seven 5-storey blocks are gracefully perched on various undulations to offer enchanting views of a lush landscaped terrain interlacing within generous facilities and amenities.



ALL THINGS
BRIGHT &
BEAUTIFUL



The recreational facilities accorded at The Gazania were conceptualized with residents' total wellness in mind, all aimed at complete enjoyment of body, mind and soul. Whether one enjoys bustling family gatherings or solitude peaceful respite, these have been generously and thoughtfully catered to suit one and all of its residents' varied lifestyles.



BUILT TO THRIVE

A distinctive 3-storey Clubhouse with an outdoor pavilion on 2nd storey forms a focal point amidst the lush landscape. The tiered landscape design with many recreational facilities create a vibrant and exciting communal environment for residents to bask in.

For those who prefer an in-door work out, a gym is housed on the 1st storey of the Clubhouse and for others who prefer outdoor activities, a fitness area awaits.



At the heart of the landscape deck features an elevated 50-metre lap pool with a majestic cascading water wall that is specially formed as a signature element amongst the curated grounds.



An aqua zone with various water activities such as spa pool, a kid's pool and pool deck is designed around the Clubhouse, catering to the differing needs of the residents.



SITE PLAN



Outdoor Fitness Area, Kid's Playground and Pavilion



THE PLEASURES
OF CONTEMPORARY
LIVING

THE GIFT OF SPACE AND FREEDOM



Living and Dining Areas



Whether for the individual, married couple or multi-generational family, this is an abode that is smartly designed to ably meet a variety of needs. For accentuated grandeur, ground floor units enjoy higher floor-to-ceiling heights, while penthouses display luxurious double volume living spaces, elevating personal space to a whole new level of splendour. Extensive use of glass and balconies also allows residents to enjoy the vibrant landscape views from within their homes. Offering ownership in perpetuity, a residence at The Gazania is a privilege that can be treasured for generations.



Master Bedroom



Master Bath



Bedroom 4

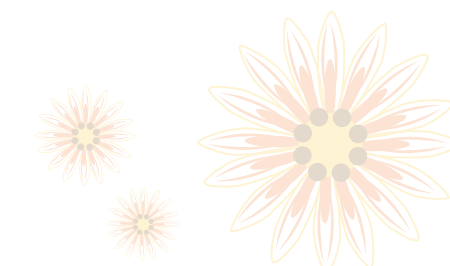
Cognizant of the affluent lifestyles of its residents, The Gazania is a crafted masterpiece on all fronts, both inside and out. Tastefully selected finishes in fine workmanship and a collection of appliances from world-renowned brands path the way for exclusive elegant living.



Junior Master Bedroom



Bedroom 3

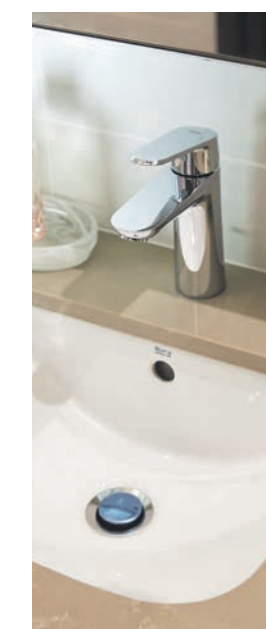


Kitchen and Yard Areas

A QUALITY MASTERPIECE



 **Electrolux**



GROHE

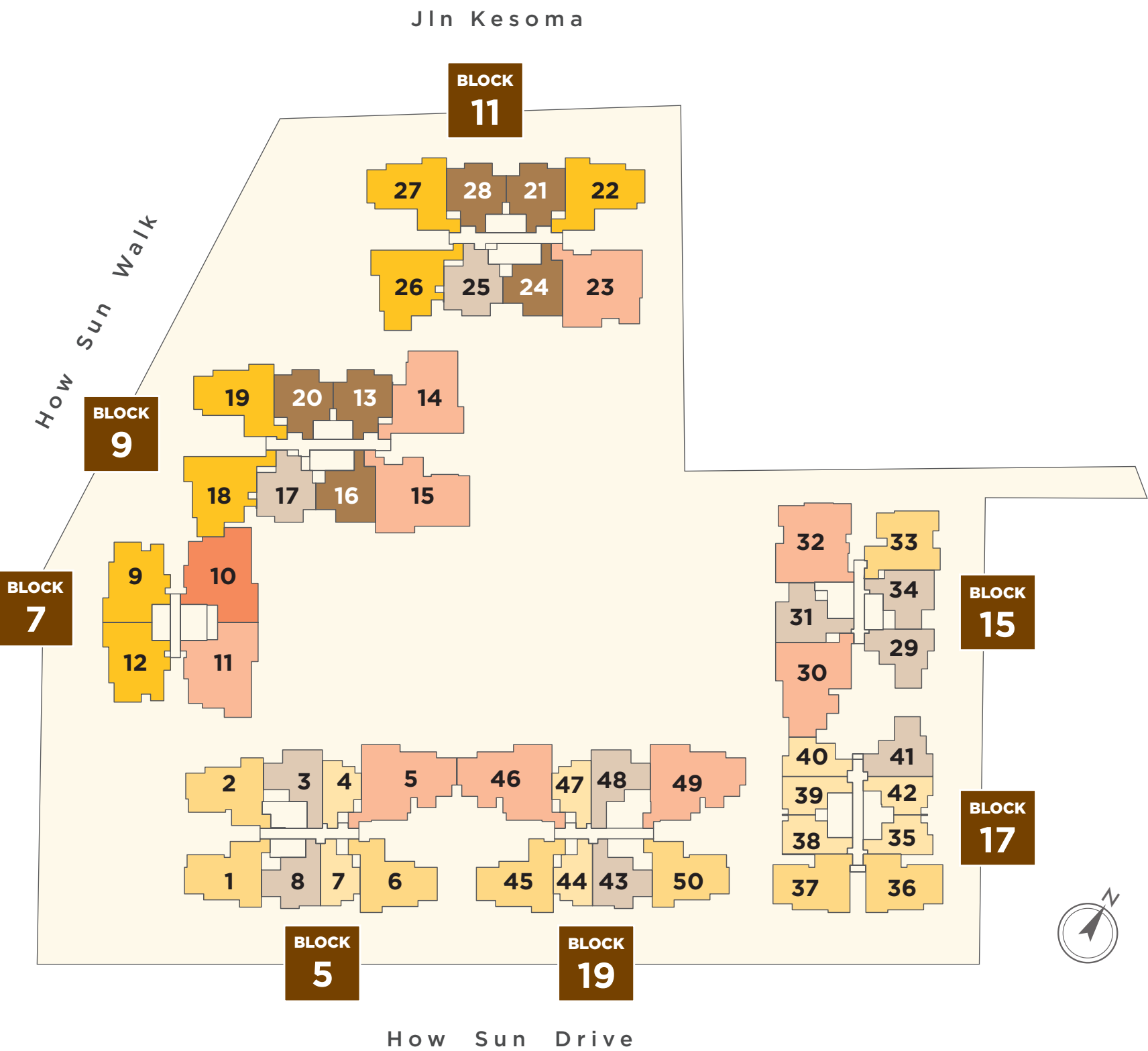


 **DAIKIN**

LAUFEN

All photographs are impressions only

KEY PLAN



DIAGRAMMATIC CHART

BLOCK		1	2	3	4	5	6	7	8
5	5	C4A	C4B	B2	A1	D1C	C5	A1	B1
	4	C4A	C4B	B2	A1	D1C	C5	A1	B1
	3	C4A	C4B	B2	A1	D1C	C5	A1	B1
	2	C4A	C4B	B2	A1	D1C	C5	A1	B1
	1	C4AP	C4BP	B2P	A1P	D1CM	C5P	A1P	B1P
7		9	10	11	12				
	5	C3	PH6	PH5	C3				
	4	C3	D3A	D3B	C3				
	3	C3	D3A	D3B	C3				
	1	C3P	D3AM	D3BM	C3P				
9		13	14	15	16	17	18	19	20
	5	B6	D5	D4	B7	B8	C2	C1	B6
	4	B6	D5	D4	B7	B8	C2	C1	B6
	3	B6	D5	D4	B7	B8	C2	C1	B6
	1	B6P	D5M	D4M	B7P	B8P	C2P	C1P	B6P
11		21	22	23	24	25	26	27	28
	5	B6	C1	PH7	B7	B8	C2	C1	B6
	4	B6	C1	D6B	B7	B8	C2	C1	B6
	3	B6	C1	D6B	B7	B8	C2	C1	B6
	1	B6P	C1P	D6BM	B7P	B8P	C2P	C1P	B6P
15		29	30	31	32	33	34		
	5	B3	PH2	B4	PH1	C6	B5		
	4	B3	D2	B4	D6A	C6	B5		
	3	B3	D2	B4	D6A	C6	B5		
	1	B3P	D2M	B4P	D6AM	C6P	B5P		
17		35	36	37	38	39	40	41	42
	5	A3	C7	C7	A2	A2	A4	B3	A3
	4	A3	C7	C7	A2	A2	A4	B3	A3
	3	A3	C7	C7	A2	A2	A4	B3	A3
	1	A3P	C7P	C7P	A2P	A2P	A4P	B3P	A3P
19		43	44	45	46	47	48	49	50
	5	B1	A1	C5	PH4	A1	B2	PH3	C4A
	4	B1	A1	C5	D1B	A1	B2	D1A	C4A
	3	B1	A1	C5	D1B	A1	B2	D1A	C4A
	1	B1P	A1P	C5P	D1BM	A1P	B2P	D1AM	C4AP

- 1-Bedroom
- 2-Bedroom + Study
- 3-Bedroom Premium
- 4-Bedroom + Study
- 2-Bedroom
- 3-Bedroom
- 4-Bedroom
- Penthouse

TYPE A1P

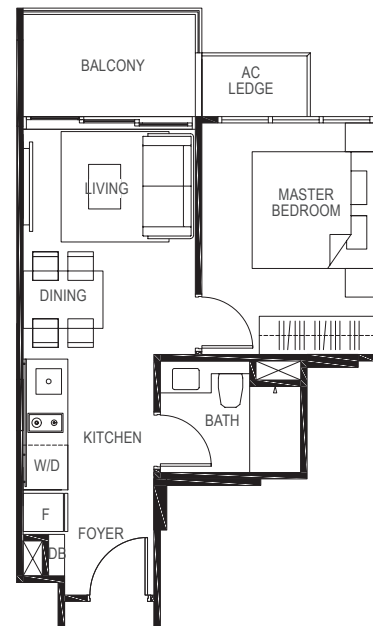
1-BEDROOM

41 sq m / (approx. 441 sq ft)

INCLUSIVE OF 5 SQ M BALCONY & 2 SQ M AC LEDGE

BLK 5 #01-04 #01-07*

BLK 19 #01-44 #01-47*
(* MIRROR IMAGE)



TYPE A1

41 sq m / (approx. 441 sq ft)

INCLUSIVE OF 5 SQ M BALCONY & 2 SQ M AC LEDGE

BLK 5 #02-04 #02-07*

#03-04 #03-07*

#04-04 #04-07*

#05-04 #05-07*

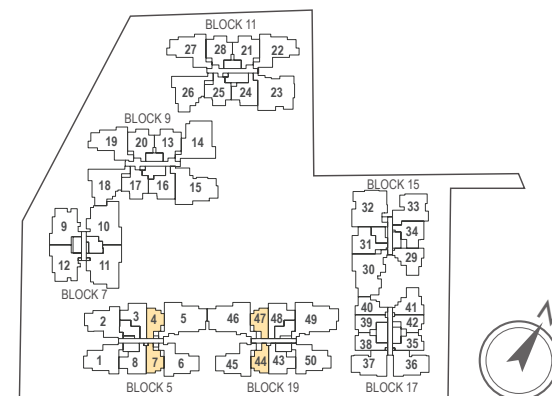
BLK 19 #02-44 #02-47*

#03-44 #03-47*

#04-44 #04-47*

#05-44 #05-47*

(* MIRROR IMAGE)



Key plan not to scale.

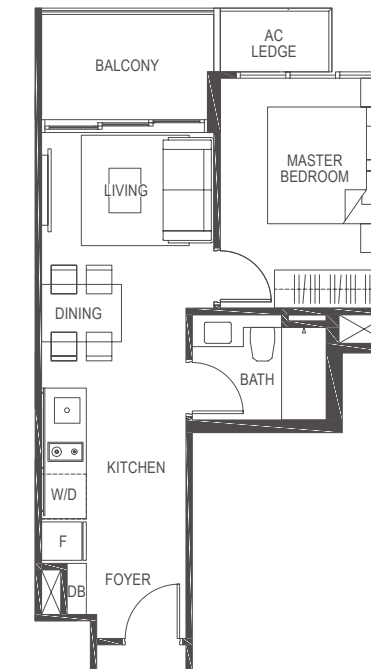
TYPE A2P

1-BEDROOM

43 sq m / (approx. 463 sq ft)

INCLUSIVE OF 5 SQ M BALCONY & 2 SQ M AC LEDGE

BLK 17 #01-38 #01-39*
(* MIRROR IMAGE)



TYPE A2

43 sq m / (approx. 463 sq ft)

INCLUSIVE OF 5 SQ M BALCONY & 2 SQ M AC LEDGE

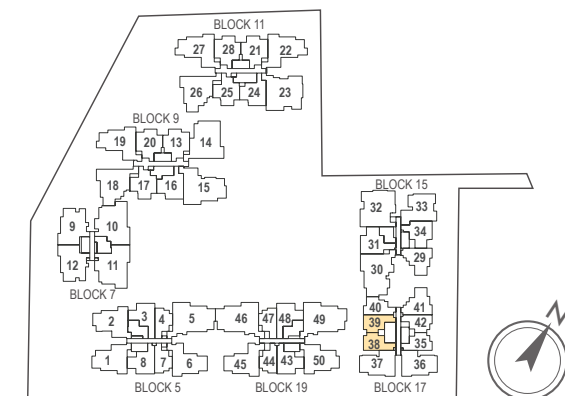
BLK 17 #02-38 #02-39*

#03-38 #03-39*

#04-38 #04-39*

#05-38 #05-39*

(* MIRROR IMAGE)



Key plan not to scale.



LEGEND:
F - Fridge DB - Distribution Board WC - Water Closet W/D - Washer cum Dryer AC - Aircon Ledge

All plans are subjected to amendments as may be approved by the relevant authorities. Floor areas are approximate measurements and are subjected to final survey. The balcony shall not be enclosed unless with the approved screen. For an illustration of the approved balcony screen, please refer to 'Annexure 1' of this brochure.



LEGEND:
F - Fridge DB - Distribution Board WC - Water Closet W/D - Washer cum Dryer AC - Aircon Ledge

All plans are subjected to amendments as may be approved by the relevant authorities. Floor areas are approximate measurements and are subjected to final survey. The balcony shall not be enclosed unless with the approved screen. For an illustration of the approved balcony screen, please refer to 'Annexure 1' of this brochure.

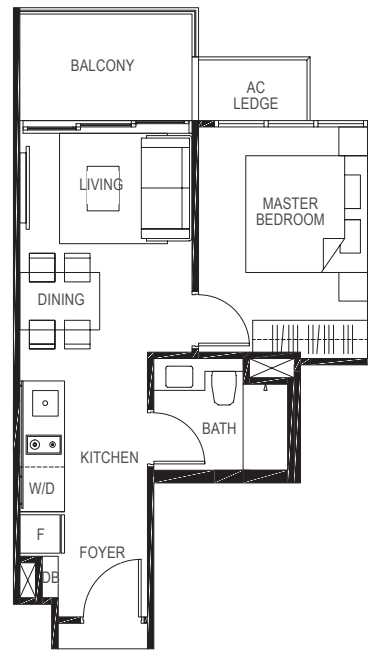
TYPE A3P

1-BEDROOM

41 sq m / (approx. 441 sq ft)

INCLUSIVE OF 5 SQ M BALCONY & 2 SQ M AC LEDGE

BLK 17 #01-42 #01-35*
(* MIRROR IMAGE)

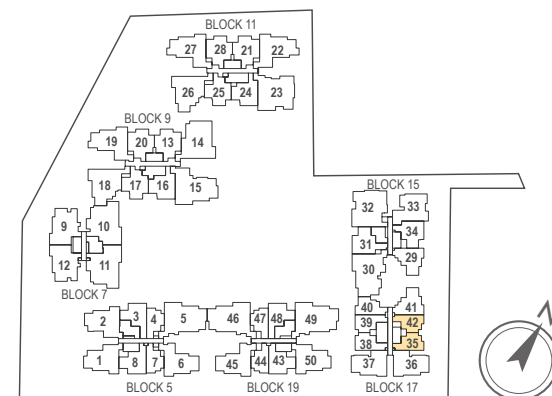


TYPE A3

41 sq m / (approx. 441 sq ft)

INCLUSIVE OF 5 SQ M BALCONY & 2 SQ M AC LEDGE

BLK 17 #02-42 #02-35*
#03-42 #03-35*
#04-42 #04-35*
#05-42 #05-35*
(* MIRROR IMAGE)



Key plan not to scale.

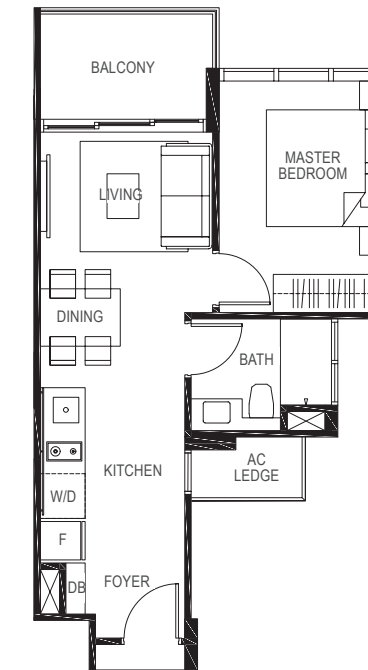
TYPE A4P

1-BEDROOM

43 sq m / (approx. 463 sq ft)

INCLUSIVE OF 5 SQ M BALCONY & 2 SQ M AC LEDGE

BLK 17 #01-40



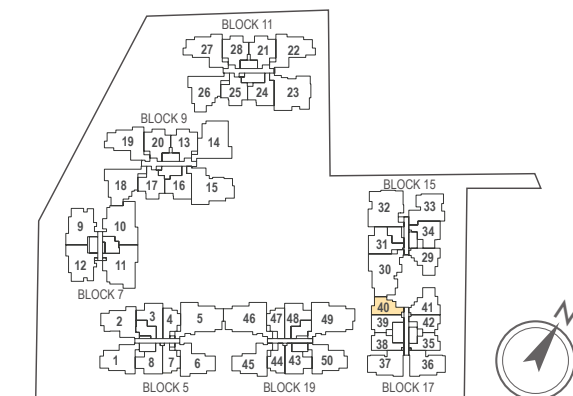
TYPE A4

1-BEDROOM

43 sq m / (approx. 463 sq ft)

INCLUSIVE OF 5 SQ M BALCONY & 2 SQ M AC LEDGE

BLK 17 #02-40
#03-40
#04-40
#05-40



Key plan not to scale.



LEGEND:
F - Fridge DB - Distribution Board WC - Water Closet W/D - Washer cum Dryer AC - Aircon Ledge

All plans are subjected to amendments as may be approved by the relevant authorities. Floor areas are approximate measurements and are subjected to final survey.
The balcony shall not be enclosed unless with the approved screen. For an illustration of the approved balcony screen, please refer to 'Annexure 1' of this brochure.



LEGEND:
F - Fridge DB - Distribution Board WC - Water Closet W/D - Washer cum Dryer AC - Aircon Ledge

All plans are subjected to amendments as may be approved by the relevant authorities. Floor areas are approximate measurements and are subjected to final survey.
The balcony shall not be enclosed unless with the approved screen. For an illustration of the approved balcony screen, please refer to 'Annexure 1' of this brochure.

TYPE B1P

2-BEDROOM

59 sq m / (approx. 635 sq ft)

INCLUSIVE OF 6 SQ M BALCONY & 3 SQ M AC LEDGE

BLK 5 #01-08

BLK 19 #01-43*
(* MIRROR IMAGE)

TYPE B1

59 sq m / (approx. 635 sq ft)

INCLUSIVE OF 6 SQ M BALCONY & 3 SQ M AC LEDGE

BLK 5 #02-08
#03-08
#04-08
#05-08

BLK 19 #02-43*
#03-43*
#04-43*
#05-43*
(* MIRROR IMAGE)

TYPE B2P

2-BEDROOM

59 sq m / (approx. 635 sq ft)

INCLUSIVE OF 6 SQ M BALCONY & 2 SQ M AC LEDGE

BLK 19 #01-48

BLK 5 #01-03*
(* MIRROR IMAGE)

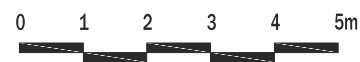
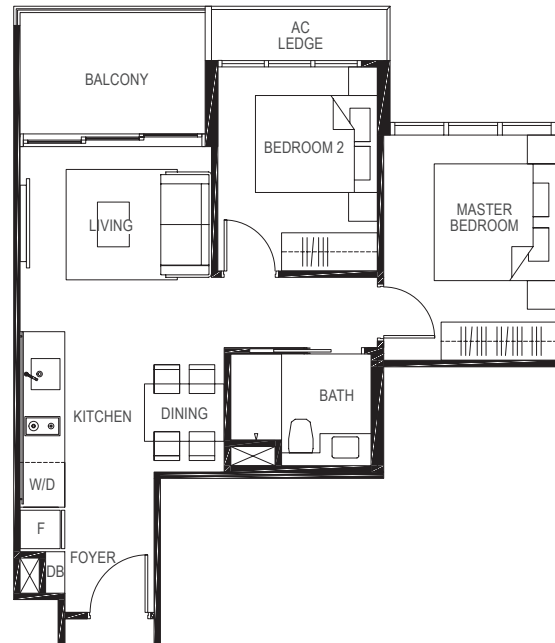
TYPE B2

59 sq m / (approx. 635 sq ft)

INCLUSIVE OF 6 SQ M BALCONY & 2 SQ M AC LEDGE

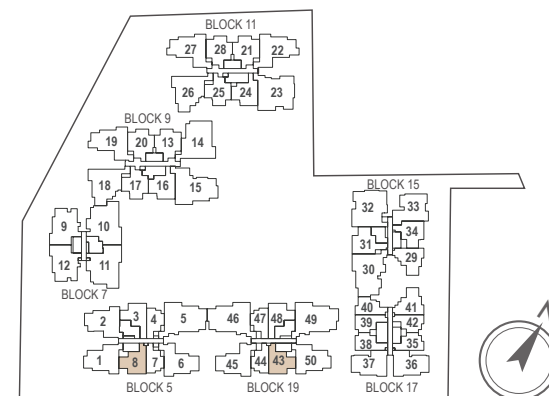
BLK 19 #02-48
#03-48
#04-48
#05-48

BLK 5 #02-03*
#03-03*
#04-03*
#05-03*
(* MIRROR IMAGE)

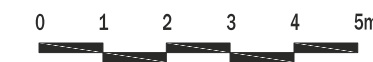


LEGEND:
F - Fridge DB - Distribution Board WC - Water Closet W/D - Washer cum Dryer AC - Aircon Ledge

All plans are subjected to amendments as may be approved by the relevant authorities. Floor areas are approximate measurements and are subjected to final survey.
The balcony shall not be enclosed unless with the approved screen. For an illustration of the approved balcony screen, please refer to 'Annexure 1' of this brochure.

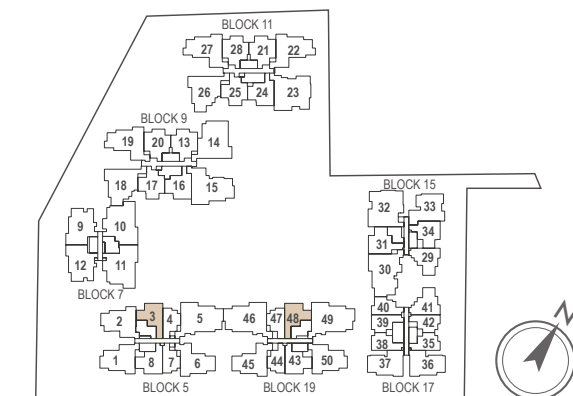


Key plan not to scale.



LEGEND:
F - Fridge DB - Distribution Board WC - Water Closet W/D - Washer cum Dryer AC - Aircon Ledge

All plans are subjected to amendments as may be approved by the relevant authorities. Floor areas are approximate measurements and are subjected to final survey.
The balcony shall not be enclosed unless with the approved screen. For an illustration of the approved balcony screen, please refer to 'Annexure 1' of this brochure.



Key plan not to scale.

TYPE B3P

2-BEDROOM

58 sq m / (approx. 624 sq ft)

INCLUSIVE OF 6 SQ M BALCONY & 3 SQ M AC LEDGE

BLK 15 #01-29

BLK 17 #01-41*

(* MIRROR IMAGE)



TYPE B3

58 sq m / (approx. 624 sq ft)

INCLUSIVE OF 6 SQ M BALCONY & 3 SQ M AC LEDGE

BLK 15 #02-29

#03-29

#04-29

#05-29

BLK 17 #02-41*

#03-41*

#04-41*

#05-41*

(* MIRROR IMAGE)

TYPE B4P

2-BEDROOM

63 sq m / (approx. 678 sq ft)

INCLUSIVE OF 6 SQ M BALCONY & 3 SQ M AC LEDGE

BLK 15 #01-31



TYPE B4

63 sq m / (approx. 678 sq ft)

INCLUSIVE OF 6 SQ M BALCONY & 3 SQ M AC LEDGE

BLK 15 #02-31

#03-31

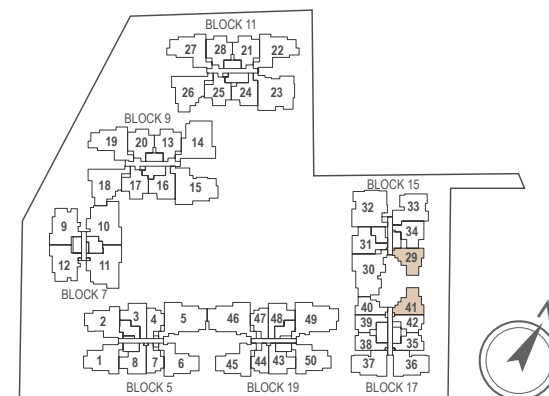
#04-31

#05-31

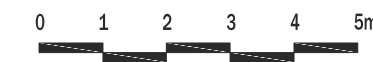


LEGEND:
F - Fridge **DB** - Distribution Board **WC** - Water Closet **W/D** - Washer cum Dryer **AC** - Aircon Ledge

All plans are subjected to amendments as may be approved by the relevant authorities. Floor areas are approximate measurements and are subjected to final survey.
 The balcony shall not be enclosed unless with the approved screen. For an illustration of the approved balcony screen, please refer to 'Annexure 1' of this brochure.

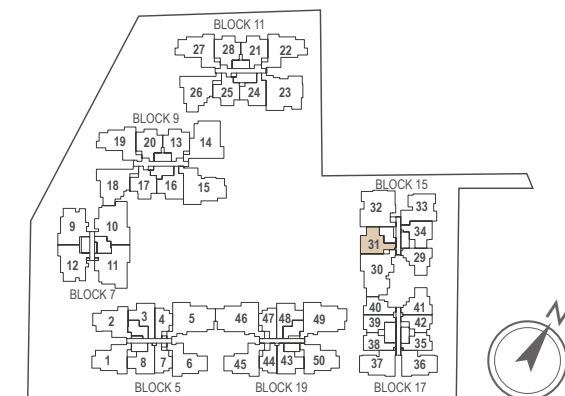


Key plan not to scale.



LEGEND:
F - Fridge **DB** - Distribution Board **WC** - Water Closet **W/D** - Washer cum Dryer **AC** - Aircon Ledge

All plans are subjected to amendments as may be approved by the relevant authorities. Floor areas are approximate measurements and are subjected to final survey.
 The balcony shall not be enclosed unless with the approved screen. For an illustration of the approved balcony screen, please refer to 'Annexure 1' of this brochure.



Key plan not to scale.

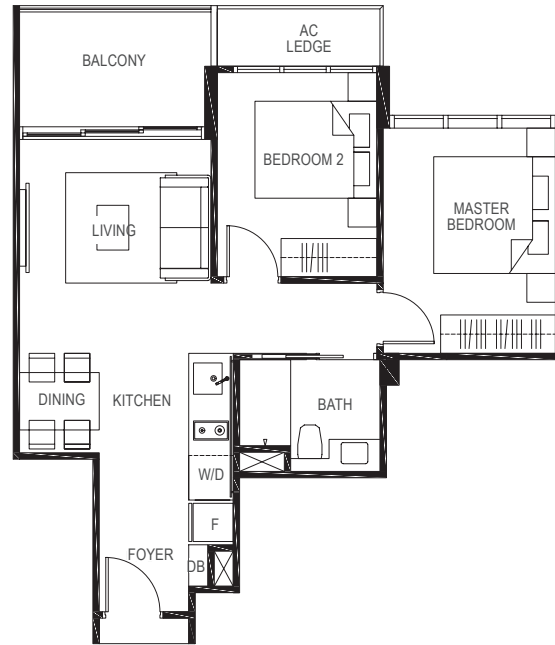
TYPE B5P

2-BEDROOM

58 sq m / (approx. 624 sq ft)

INCLUSIVE OF 6 SQ M BALCONY & 3 SQ M AC LEDGE

BLK 15 #01-34



TYPE B5

2-BEDROOM

58 sq m / (approx. 624 sq ft)

INCLUSIVE OF 6 SQ M BALCONY & 3 SQ M AC LEDGE

BLK 15 #02-34
#03-34
#04-34
#05-34

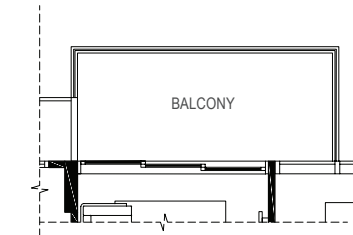
TYPE B6P

2-BEDROOM + STUDY

64 sq m / (approx. 689 sq ft)

INCLUSIVE OF 8 SQ M BALCONY & 3 SQ M AC LEDGE

BLK 9 #01-20 #01-13*
BLK 11 #01-28 #01-21*
(* MIRROR IMAGE)

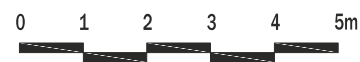


TYPE B6

65 sq m / (approx. 700 sq ft)

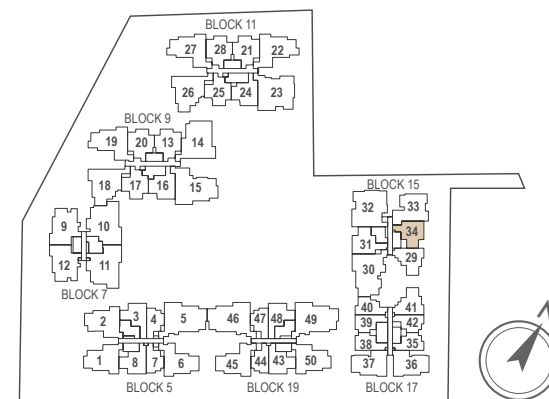
INCLUSIVE OF 8 SQ M BALCONY & 3 SQ M AC LEDGE

BLK 9 #02-20 #02-13*
#03-20 #01-13*
#04-20 #01-13*
#05-20 #01-13*
BLK 11 #02-28 #01-21*
#03-28 #01-21*
#04-28 #01-21*
#05-28 #01-21*
(* MIRROR IMAGE)



LEGEND:
F - Fridge DB - Distribution Board WC - Water Closet W/D - Washer cum Dryer AC - Aircon Ledge

All plans are subjected to amendments as may be approved by the relevant authorities. Floor areas are approximate measurements and are subjected to final survey.
The balcony shall not be enclosed unless with the approved screen. For an illustration of the approved balcony screen, please refer to 'Annexure 1' of this brochure.

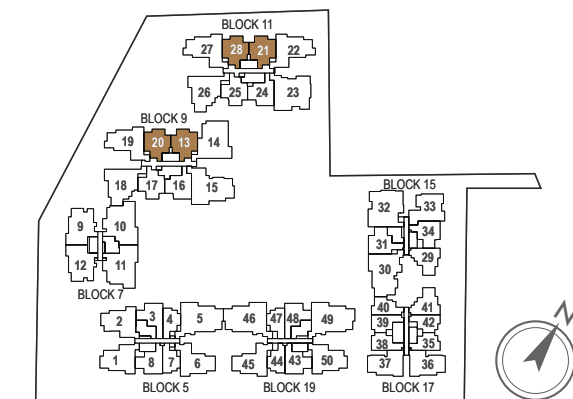


Key plan not to scale.



LEGEND:
F - Fridge DB - Distribution Board WC - Water Closet W/D - Washer cum Dryer AC - Aircon Ledge

All plans are subjected to amendments as may be approved by the relevant authorities. Floor areas are approximate measurements and are subjected to final survey.
The balcony shall not be enclosed unless with the approved screen. For an illustration of the approved balcony screen, please refer to 'Annexure 1' of this brochure.



Key plan not to scale.

TYPE B7P

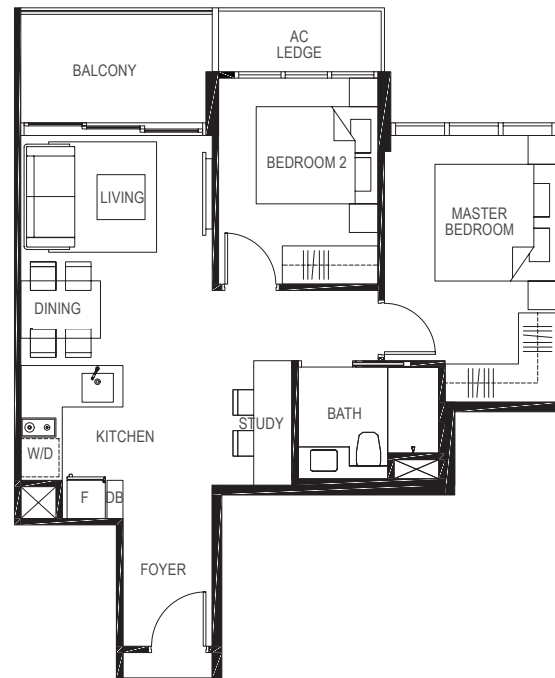
2-BEDROOM + STUDY

63 sq m / (approx. 678 sq ft)

INCLUSIVE OF 6 SQ M BALCONY & 3 SQ M AC LEDGE

BLK 9 #01-16

BLK 11 #01-24



TYPE B7

63 sq m / (approx. 678 sq ft)

INCLUSIVE OF 6 SQ M BALCONY & 3 SQ M AC LEDGE

BLK 9 #02-16

#03-16

#04-16

#05-16

BLK 11 #02-24

#03-24

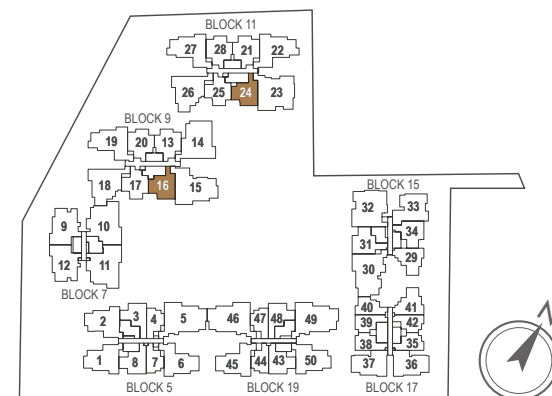
#04-24

#05-24



LEGEND:
F - Fridge **DB** - Distribution Board **WC** - Water Closet **W/D** - Washer cum Dryer **AC** - Aircon Ledge

All plans are subjected to amendments as may be approved by the relevant authorities. Floor areas are approximate measurements and are subjected to final survey.
 The balcony shall not be enclosed unless with the approved screen. For an illustration of the approved balcony screen, please refer to 'Annexure 1' of this brochure.



Key plan not to scale.

TYPE B8P

2-BEDROOM

61 sq m / (approx. 657 sq ft)

INCLUSIVE OF 8 SQ M BALCONY & 3 SQ M AC LEDGE

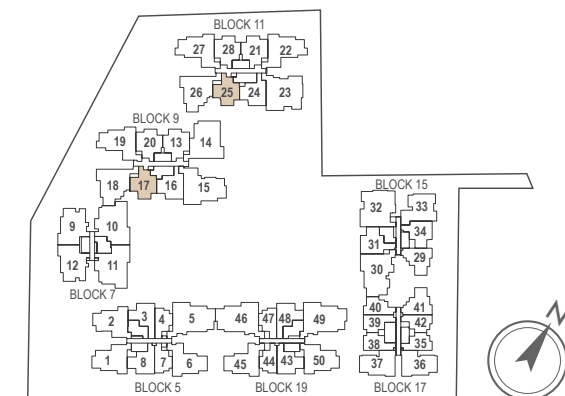
BLK 9 #01-17

BLK 11 #01-25



LEGEND:
F - Fridge **DB** - Distribution Board **WC** - Water Closet **W/D** - Washer cum Dryer **AC** - Aircon Ledge

All plans are subjected to amendments as may be approved by the relevant authorities. Floor areas are approximate measurements and are subjected to final survey.
 The balcony shall not be enclosed unless with the approved screen. For an illustration of the approved balcony screen, please refer to 'Annexure 1' of this brochure.



Key plan not to scale.

TYPE B8

61 sq m / 657 sq ft

INCLUSIVE OF 7.5 SQ M BALCONY & 2.6 SQ M AC LEDGE

BLK 9 #02-17

#03-17

#04-17

#05-17

BLK 11 #02-25

#03-25

#04-25

#05-25

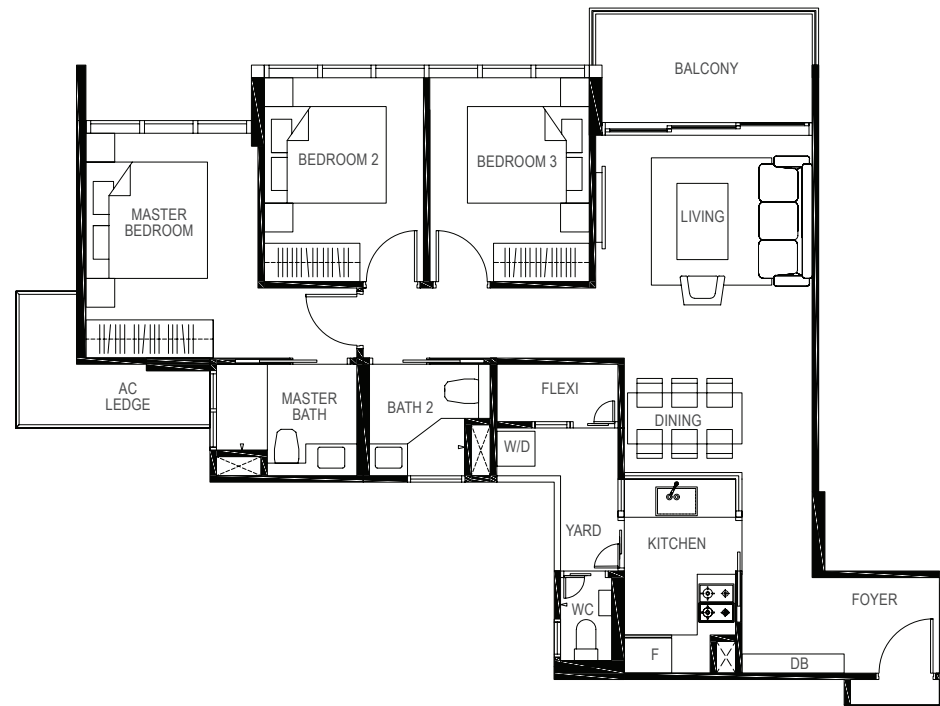
TYPE C1P

3-BEDROOM PREMIUM

92 sq m / (approx. 990 sq ft)

INCLUSIVE OF 6 SQ M BALCONY & 4.0 SQ M AC LEDGE

BLK 9 #01-19
 BLK 11 #01-27 #01-22*
 (*) MIRROR IMAGE

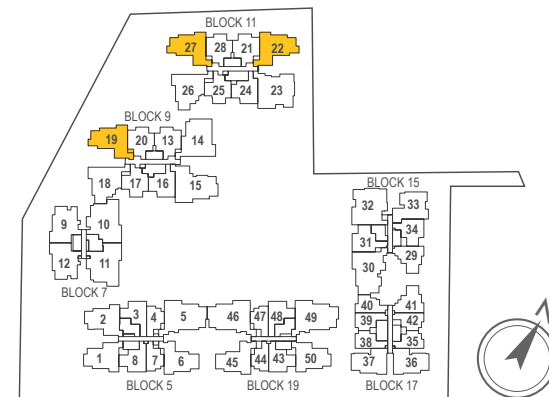


TYPE C1

92 sq m / (approx. 990 sq ft)

INCLUSIVE OF 6 SQ M BALCONY & 4.0 SQ M AC LEDGE

BLK 9 #02-19
 #03-19
 #04-19
 #05-19
 BLK 11 #02-27 #02-22*
 #03-27 #03-22*
 #04-27 #04-22*
 #05-27 #05-22*
 (*) MIRROR IMAGE



Key plan not to scale.

TYPE C2P

3-BEDROOM PREMIUM

98 sq m / (approx. 1055 sq ft)

INCLUSIVE OF 7 SQ M BALCONY & 5 SQ M AC LEDGE

BLK 9 #01-18
 BLK 11 #01-26



LEGEND:
 F - Fridge DB - Distribution Board WC - Water Closet W/D - Washer cum Dryer AC - Aircon Ledge

All plans are subjected to amendments as may be approved by the relevant authorities. Floor areas are approximate measurements and are subjected to final survey.
 The balcony shall not be enclosed unless with the approved screen. For an illustration of the approved balcony screen, please refer to 'Annexure 1' of this brochure.

TYPE C2

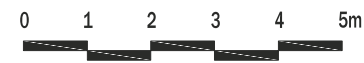
98 sq m / (approx. 1055 sq ft)

INCLUSIVE OF 7 SQ M BALCONY & 5 SQ M AC LEDGE

BLK 9 #02-18
 #03-18
 #04-18
 #05-18
 BLK 11 #02-26
 #03-26
 #04-26
 #05-26



Key plan not to scale.



LEGEND:
 F - Fridge DB - Distribution Board WC - Water Closet W/D - Washer cum Dryer AC - Aircon Ledge

All plans are subjected to amendments as may be approved by the relevant authorities. Floor areas are approximate measurements and are subjected to final survey.
 The balcony shall not be enclosed unless with the approved screen. For an illustration of the approved balcony screen, please refer to 'Annexure 1' of this brochure.

TYPE C3P

3-BEDROOM PREMIUM

89 sq m / (approx. 958 sq ft)

INCLUSIVE OF 7 SQ M BALCONY & 4 SQ M AC LEDGE

BLK 7 #01-12 #01-09*
(* MIRROR IMAGE)

TYPE C3

89 sq m / (approx. 958 sq ft)

INCLUSIVE OF 7 SQ M BALCONY & 4 SQ M AC LEDGE

BLK 7 #02-12 #02-09*
#03-12 #03-09*
#04-12 #04-09*
#05-12 #05-09*
(* MIRROR IMAGE)

TYPE C4AP

3-BEDROOM

84 sq m / (approx. 904 sq ft)

INCLUSIVE OF 6 SQ M BALCONY & 4 SQ M AC LEDGE

BLK 5 #01-01*
(* MIRROR IMAGE)

BLK 19 #01-50

TYPE C4A

84 sq m / (approx. 904 sq ft)

INCLUSIVE OF 6 SQ M BALCONY & 4 SQ M AC LEDGE

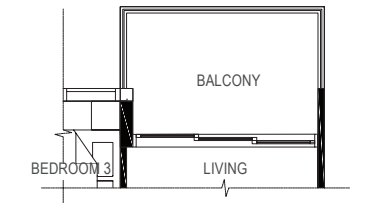
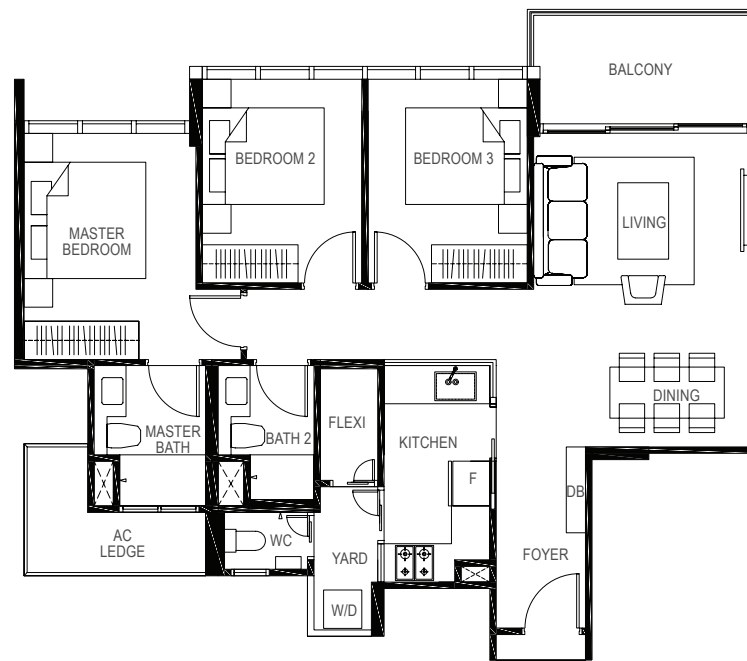
BLK 19 #02-50 #03-50 #04-50 #05-50
BLK 5 #02-01* #03-01* #04-01* #05-01*
(* MIRROR IMAGE)

TYPE C4BP

85 sq m / (approx. 915 sq ft)

INCLUSIVE OF 6 SQ M BALCONY & 4 SQ M AC LEDGE

BLK 5 #01-02

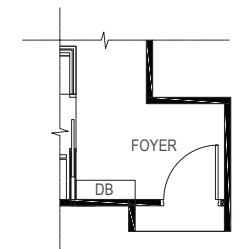


TYPE C4B

85 sq m / (approx. 915 sq ft)

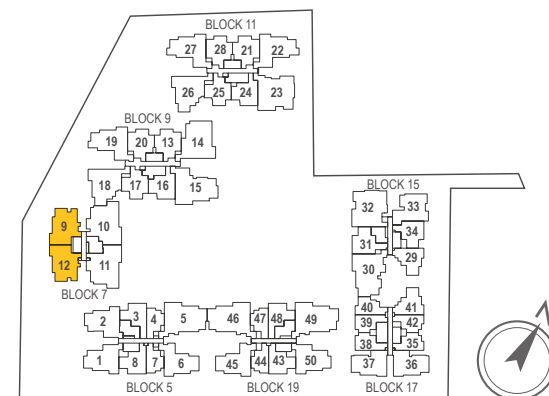
INCLUSIVE OF 6 SQ M BALCONY & 4 SQ M AC LEDGE

BLK 5 #02-02 #03-02 #04-02 #05-02



LEGEND:
F - Fridge DB - Distribution Board WC - Water Closet W/D - Washer cum Dryer AC - Aircon Ledge

All plans are subjected to amendments as may be approved by the relevant authorities. Floor areas are approximate measurements and are subjected to final survey.
The balcony shall not be enclosed unless with the approved screen. For an illustration of the approved balcony screen, please refer to 'Annexure 1' of this brochure.

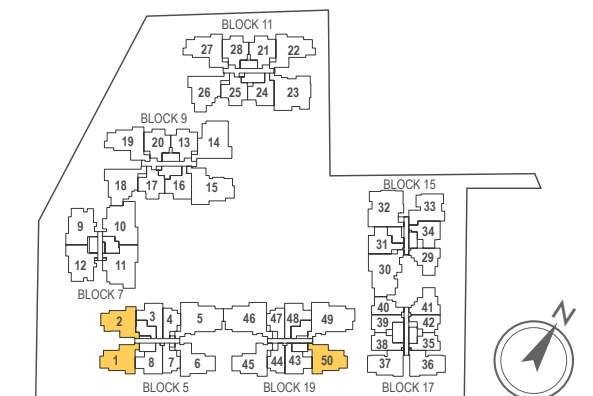


Key plan not to scale.



LEGEND:
F - Fridge DB - Distribution Board WC - Water Closet W/D - Washer cum Dryer AC - Aircon Ledge

All plans are subjected to amendments as may be approved by the relevant authorities. Floor areas are approximate measurements and are subjected to final survey.
The balcony shall not be enclosed unless with the approved screen. For an illustration of the approved balcony screen, please refer to 'Annexure 1' of this brochure.



Key plan not to scale.

TYPE C5P

3-BEDROOM

84 sq m / (approx. 904 sq ft)

INCLUSIVE OF 6 SQ M BALCONY & 3 SQ M AC LEDGE

BLK 5 #01-06*
(* MIRROR IMAGE)

BLK 19 #01-45

TYPE C5

84 sq m / 904 sq ft

INCLUSIVE OF 6 SQ M BALCONY & 3 SQ M AC LEDGE

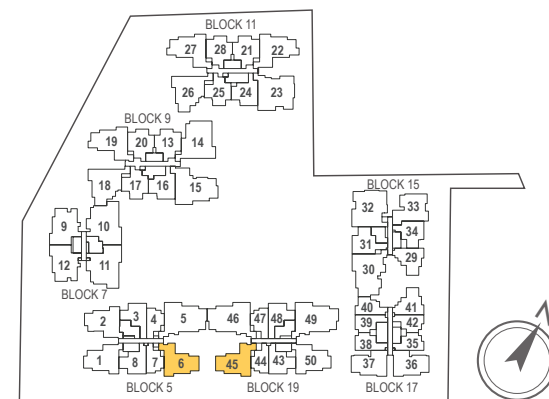
BLK 5 #02-06*
#03-06*
#04-06*
#05-06*
(* MIRROR IMAGE)

BLK 19 #02-45
#03-45
#04-45
#05-45



LEGEND:
F - Fridge DB - Distribution Board WC - Water Closet W/D - Washer cum Dryer AC - Aircon Ledge

All plans are subjected to amendments as may be approved by the relevant authorities. Floor areas are approximate measurements and are subjected to final survey.
The balcony shall not be enclosed unless with the approved screen. For an illustration of the approved balcony screen, please refer to 'Annexure 1' of this brochure.



Key plan not to scale.

TYPE C6P

3-BEDROOM

82 sq m / (approx. 883 sq ft)

INCLUSIVE OF 6 SQ M BALCONY & 3 SQ M AC LEDGE

BLK 15 #01-33

TYPE C6

82 sq m / (approx. 883 sq ft)

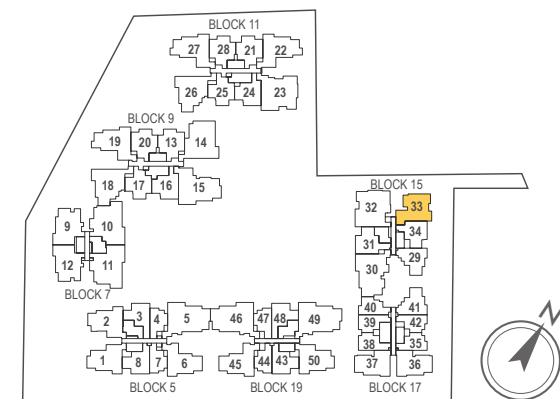
INCLUSIVE OF 6 SQ M BALCONY & 3 SQ M AC LEDGE

BLK 15 #02-33
#03-33
#04-33
#05-33



LEGEND:
F - Fridge DB - Distribution Board WC - Water Closet W/D - Washer cum Dryer AC - Aircon Ledge

All plans are subjected to amendments as may be approved by the relevant authorities. Floor areas are approximate measurements and are subjected to final survey.
The balcony shall not be enclosed unless with the approved screen. For an illustration of the approved balcony screen, please refer to 'Annexure 1' of this brochure.



Key plan not to scale.

TYPE C7P

3-BEDROOM

79 sq m / (approx. 850 sq ft)

INCLUSIVE OF 4 SQ M BALCONY & 4 SQ M AC LEDGE

BLK 17 #01-37 #01-36*
(* MIRROR IMAGE)



TYPE C7

79 sq m / (approx. 850 sq ft)

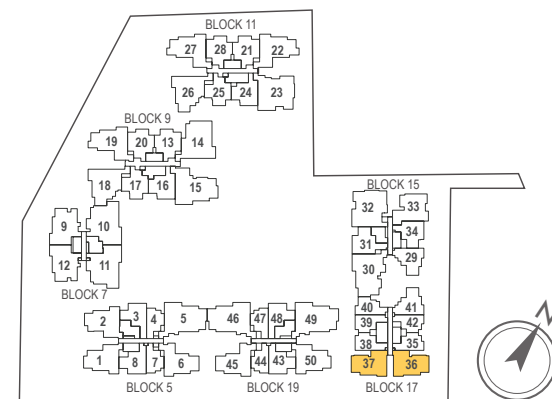
INCLUSIVE OF 4 SQ M BALCONY & 4 SQ M AC LEDGE

BLK 17 #02-37 #02-36*
#03-37 #03-36*
#04-37 #04-36*
#05-37 #05-36*
(* MIRROR IMAGE)



LEGEND:
F - Fridge DB - Distribution Board WC - Water Closet W/D - Washer cum Dryer AC - Aircon Ledge

All plans are subjected to amendments as may be approved by the relevant authorities. Floor areas are approximate measurements and are subjected to final survey.
The balcony shall not be enclosed unless with the approved screen. For an illustration of the approved balcony screen, please refer to 'Annexure 1' of this brochure.



Key plan not to scale.

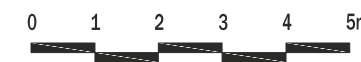
TYPE D1A

4-BEDROOM

119 sq m / (approx. 1281 sq ft)

INCLUSIVE OF 12 SQ M BALCONY & 6 SQ M AC LEDGE

BLK 19 #02-49
#03-49
#04-49



LEGEND:
F - Fridge DB - Distribution Board WC - Water Closet W/D - Washer cum Dryer AC - Aircon Ledge

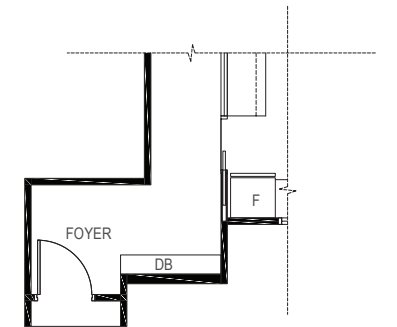
All plans are subjected to amendments as may be approved by the relevant authorities. Floor areas are approximate measurements and are subjected to final survey.
The balcony shall not be enclosed unless with the approved screen. For an illustration of the approved balcony screen, please refer to 'Annexure 1' of this brochure.

TYPE D1B

120 sq m / (approx. 1291 sq ft)

INCLUSIVE OF 12 SQ M BALCONY & 6 SQ M AC LEDGE

BLK 19 #02-46*
#03-46*
#04-46*
(* MIRROR IMAGE)

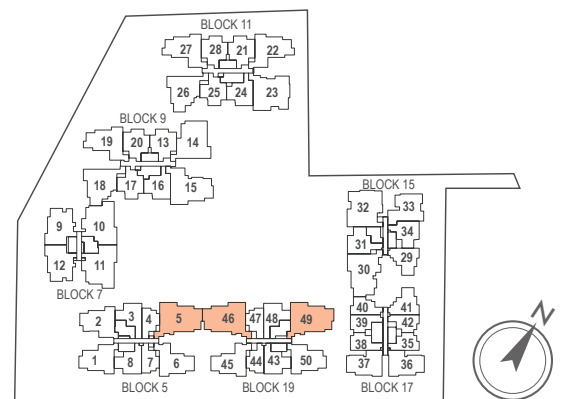


TYPE D1C

120 sq m / (approx. 1291 sq ft)

INCLUSIVE OF 12 SQ M BALCONY & 6 SQ M AC LEDGE

BLK 5 #02-05
#03-05
#04-05
#05-05



Key plan not to scale.

TYPE D1AM

4-BEDROOM + STUDY

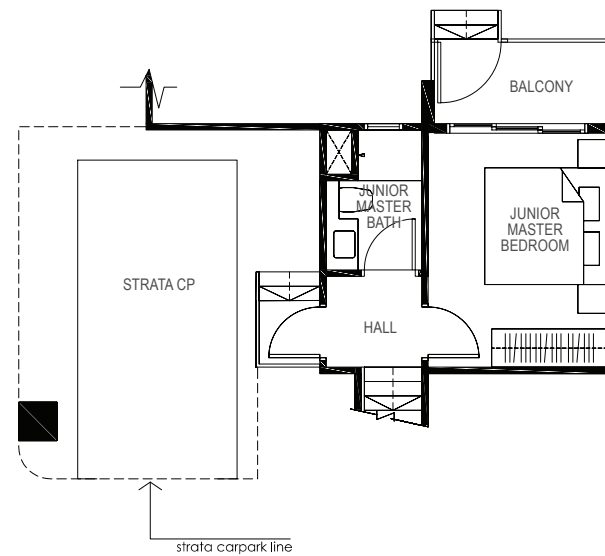
169 sq m / (approx. 1819 sq ft)

INCLUSIVE OF 17 SQ M BALCONY, 5 SQ M VOID, 7 SQ M AC LEDGE & 23 SQ M STRATA CARPARK

BLK 19 #01-49



UPPER MEZZANINE

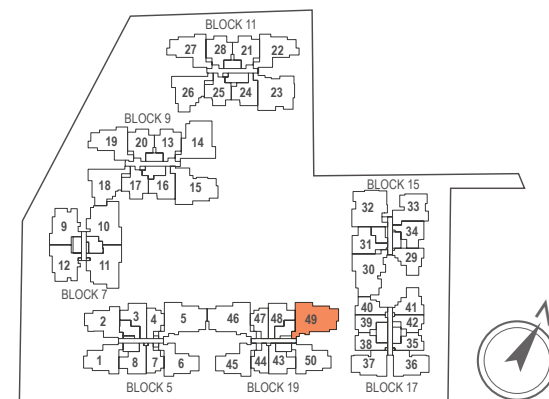


LOWER MEZZANINE



LEGEND:
F - Fridge **DB** - Distribution Board **WC** - Water Closet **W/D** - Washer cum Dryer **AC** - Aircon Ledge

All plans are subjected to amendments as may be approved by the relevant authorities. Floor areas are approximate measurements and are subjected to final survey.
 The balcony shall not be enclosed unless with the approved screen. For an illustration of the approved balcony screen, please refer to 'Annexure 1' of this brochure.



Key plan not to scale.



TYPE D1BM

4-BEDROOM + STUDY

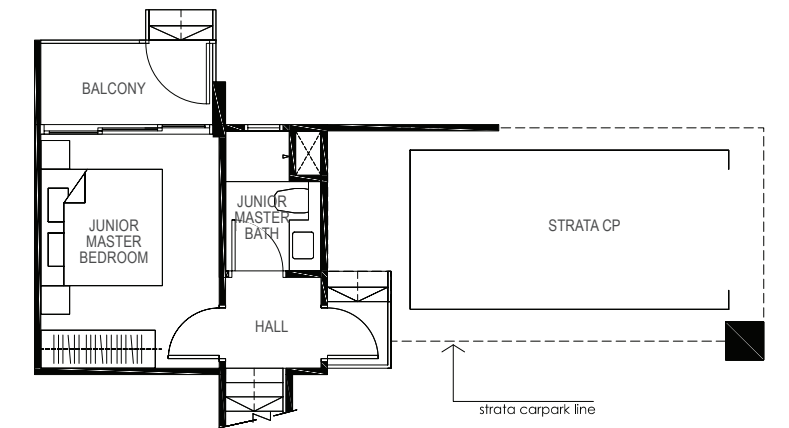
170 sq m / (approx. 1830 sq ft)

INCLUSIVE OF 16 SQ M BALCONY, 5 SQ M VOID, 6 SQ M AC LEDGE & 24 SQ M STRATA CARPARK

BLK 19 #01-46



UPPER MEZZANINE

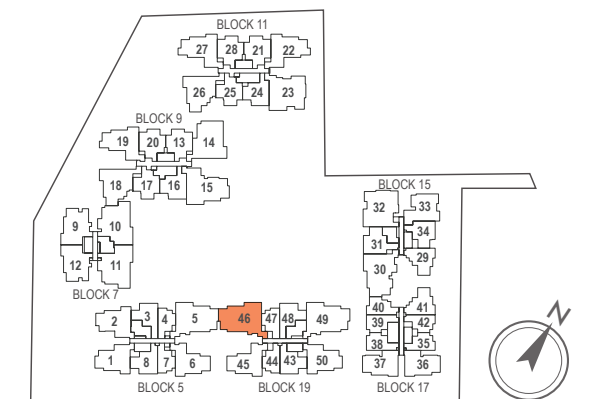


LOWER MEZZANINE



LEGEND:
F - Fridge **DB** - Distribution Board **WC** - Water Closet **W/D** - Washer cum Dryer **AC** - Aircon Ledge

All plans are subjected to amendments as may be approved by the relevant authorities. Floor areas are approximate measurements and are subjected to final survey.
 The balcony shall not be enclosed unless with the approved screen. For an illustration of the approved balcony screen, please refer to 'Annexure 1' of this brochure.



Key plan not to scale.



TYPE D1CM

4-BEDROOM + STUDY

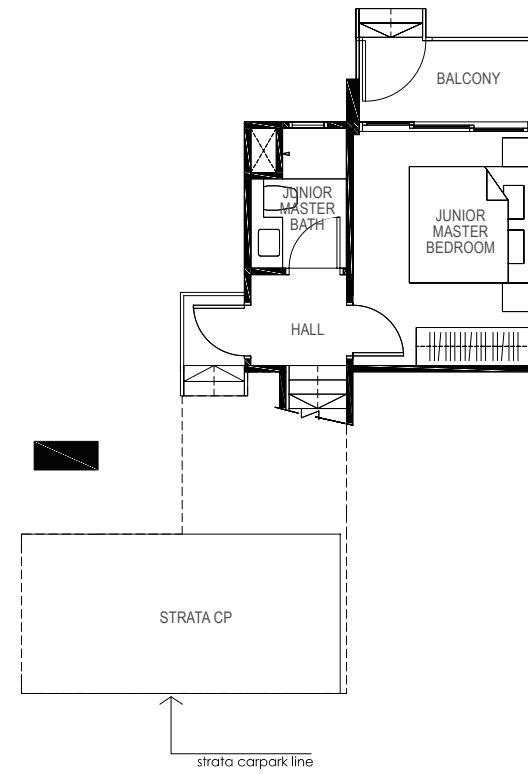
159 sq m / (approx. 1711 sq ft)

INCLUSIVE OF 16 SQ M BALCONY, 5 SQ M VOID, 6 SQ M AC LEDGE & 19 SQ M STRATA CARPARK

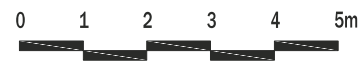
BLK 5 #01-05



UPPER MEZZANINE

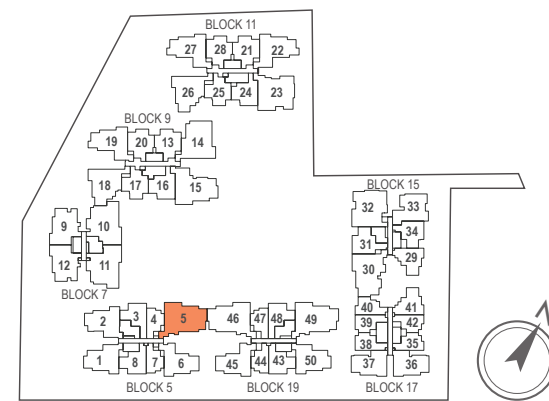


LOWER MEZZANINE



LEGEND:
F - Fridge **DB** - Distribution Board **WC** - Water Closet **W/D** - Washer cum Dryer **AC** - Aircon Ledge

All plans are subjected to amendments as may be approved by the relevant authorities. Floor areas are approximate measurements and are subjected to final survey.
 The balcony shall not be enclosed unless with the approved screen. For an illustration of the approved balcony screen, please refer to 'Annexure 1' of this brochure.



Key plan not to scale.



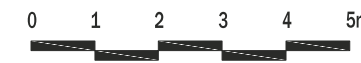
TYPE D2

4-BEDROOM

119 sq m / (approx. 1281 sq ft)

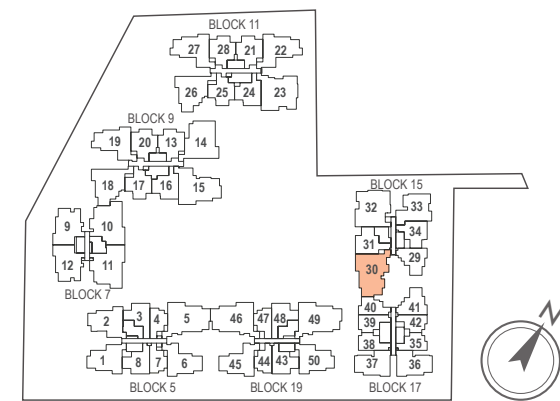
INCLUSIVE OF 11 SQ M BALCONY & 6 SQ M AC LEDGE

BLK 15 #02-30
 #03-30
 #04-30



LEGEND:
F - Fridge **DB** - Distribution Board **WC** - Water Closet **W/D** - Washer cum Dryer **AC** - Aircon Ledge

All plans are subjected to amendments as may be approved by the relevant authorities. Floor areas are approximate measurements and are subjected to final survey.
 The balcony shall not be enclosed unless with the approved screen. For an illustration of the approved balcony screen, please refer to 'Annexure 1' of this brochure.



Key plan not to scale.



TYPE D2M

4-BEDROOM + STUDY

171 sq m / (approx. 1841 sq ft)

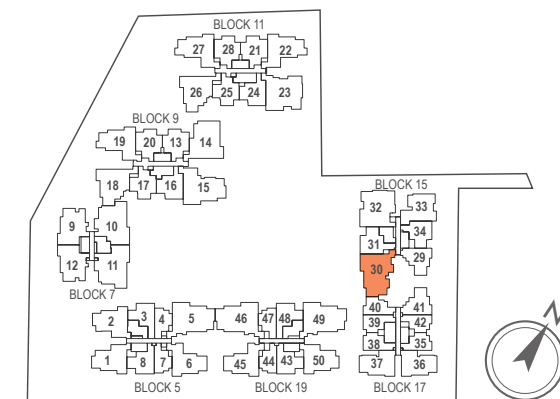
INCLUSIVE OF 15. SQ M BALCONY, 5 SQ M VOID, 6 SQ M AC LEDGE & 26 SQ M STRATA CARPARK

BLK 15 #01-30



UPPER MEZZANINE

LOWER MEZZANINE



Key plan not to scale.



LEGEND:
F - Fridge **DB** - Distribution Board **WC** - Water Closet **W/D** - Washer cum Dryer **AC** - Aircon Ledge

All plans are subjected to amendments as may be approved by the relevant authorities. Floor areas are approximate measurements and are subjected to final survey.
 The balcony shall not be enclosed unless with the approved screen. For an illustration of the approved balcony screen, please refer to 'Annexure 1' of this brochure.

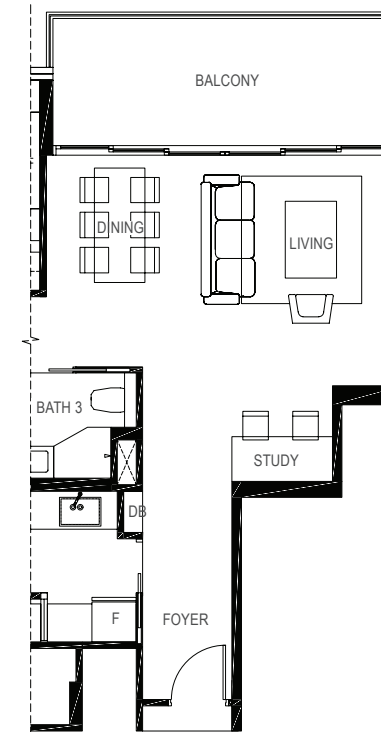
TYPE D3A

4-BEDROOM + STUDY

120 sq m / (approx. 1292 sq ft)

INCLUSIVE OF 12 SQ M BALCONY & 5 SQ M AC LEDGE

BLK 7 #02-10
 #03-10
 #04-10



LEGEND:
F - Fridge **DB** - Distribution Board **WC** - Water Closet **W/D** - Washer cum Dryer **AC** - Aircon Ledge

All plans are subjected to amendments as may be approved by the relevant authorities. Floor areas are approximate measurements and are subjected to final survey.
 The balcony shall not be enclosed unless with the approved screen. For an illustration of the approved balcony screen, please refer to 'Annexure 1' of this brochure.

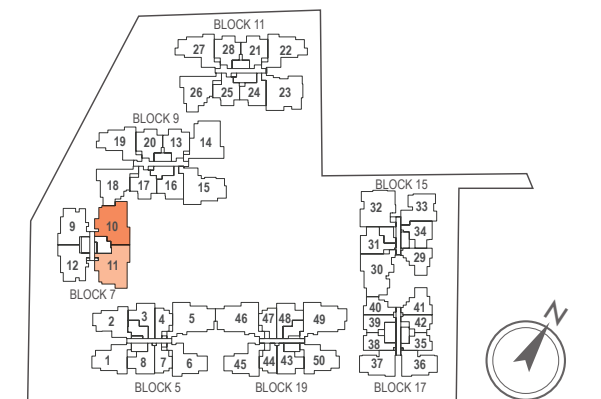
TYPE D3B

4-BEDROOM

117 sq m / (approx. 1259 sq ft)

INCLUSIVE OF 12 SQ M BALCONY & 5 SQ M AC LEDGE

BLK 7 #02-11
 #03-11
 #04-11



Key plan not to scale.



LEGEND:
F - Fridge **DB** - Distribution Board **WC** - Water Closet **W/D** - Washer cum Dryer **AC** - Aircon Ledge

All plans are subjected to amendments as may be approved by the relevant authorities. Floor areas are approximate measurements and are subjected to final survey.
 The balcony shall not be enclosed unless with the approved screen. For an illustration of the approved balcony screen, please refer to 'Annexure 1' of this brochure.

TYPE D3AM

4-BEDROOM + STUDY

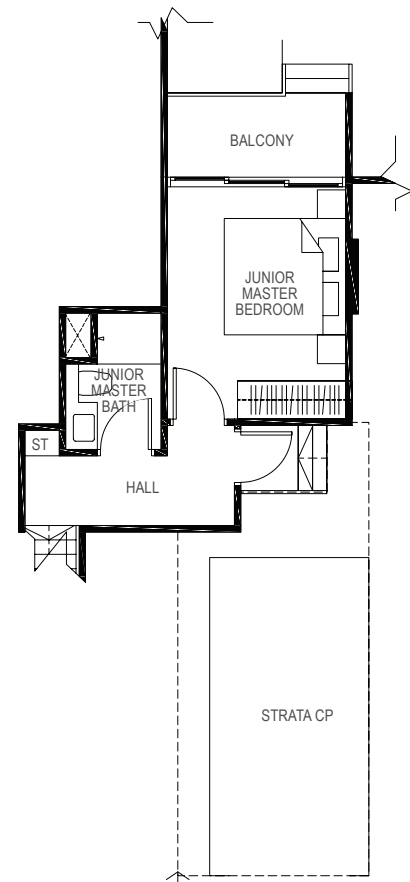
164 sq m / (approx. 1765 sq ft)

INCLUSIVE OF 17 SQ M BALCONY, 5 SQ M VOID, 6 SQ M AC LEDGE & 18 SQ M STRATA CARPARK

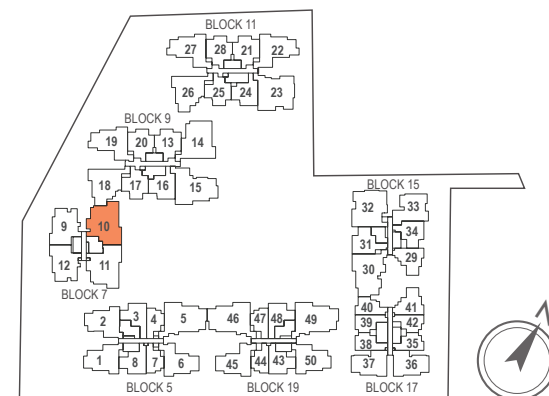
BLK 7 #01-10



UPPER MEZZANINE



LOWER MEZZANINE



Key plan not to scale.



LEGEND:
F - Fridge **DB** - Distribution Board **WC** - Water Closet **W/D** - Washer cum Dryer **AC** - Aircon Ledge

All plans are subjected to amendments as may be approved by the relevant authorities. Floor areas are approximate measurements and are subjected to final survey.
 The balcony shall not be enclosed unless with the approved screen. For an illustration of the approved balcony screen, please refer to 'Annexure 1' of this brochure.

TYPE D3BM

4-BEDROOM

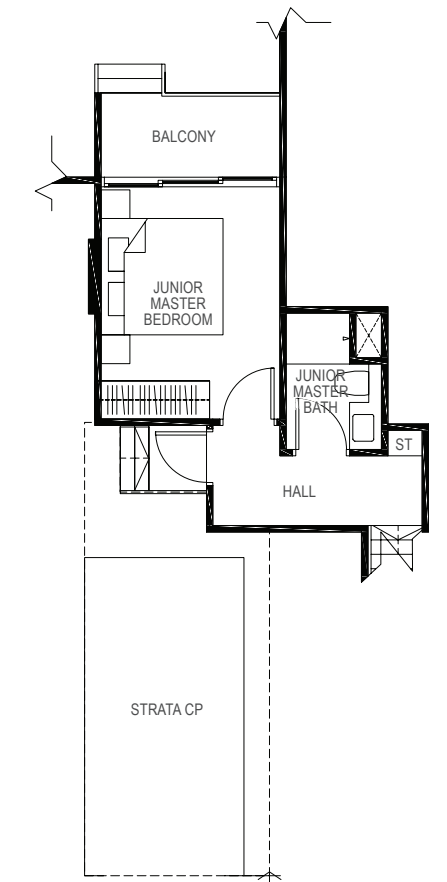
162 sq m / (approx. 1744 sq ft)

INCLUSIVE OF 17 SQ M BALCONY, 5 SQ M VOID, 6 SQ M AC LEDGE & 18 SQ M STRATA CARPARK

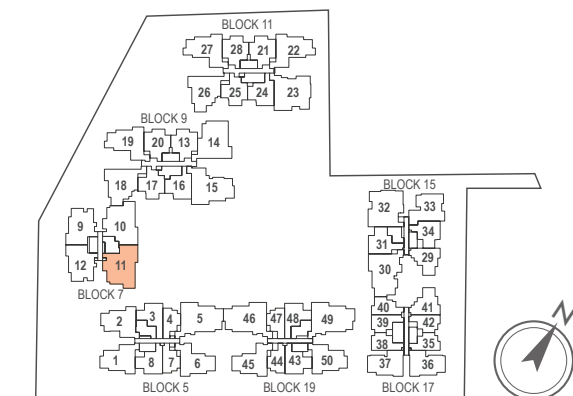
BLK 7 #01-11



UPPER MEZZANINE



LOWER MEZZANINE



Key plan not to scale.



LEGEND:
F - Fridge **DB** - Distribution Board **WC** - Water Closet **W/D** - Washer cum Dryer **AC** - Aircon Ledge

All plans are subjected to amendments as may be approved by the relevant authorities. Floor areas are approximate measurements and are subjected to final survey.
 The balcony shall not be enclosed unless with the approved screen. For an illustration of the approved balcony screen, please refer to 'Annexure 1' of this brochure.

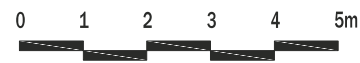
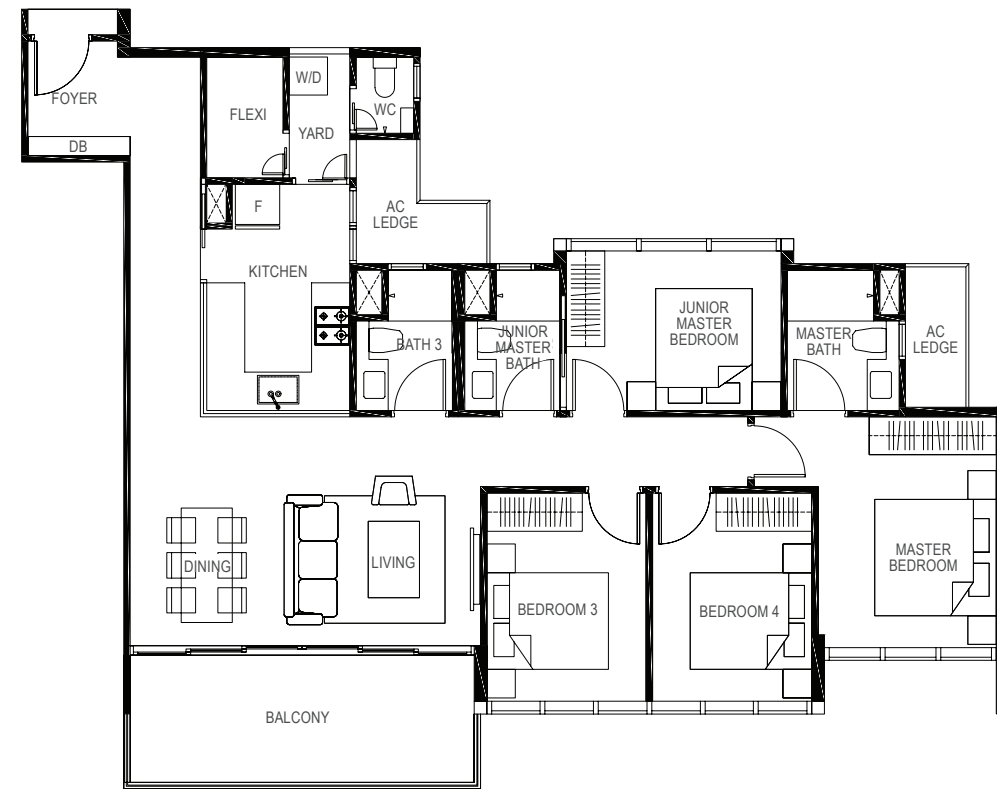
TYPE D4

4-BEDROOM

121 sq m / (approx. 1302 sq ft)

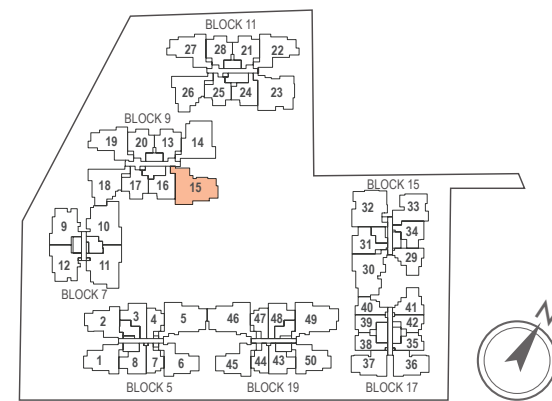
INCLUSIVE OF 12 SQ M BALCONY & 6 SQ M AC LEDGE

BLK 9 #02-15
 #03-15
 #04-15
 #05-15



LEGEND:
F - Fridge **DB** - Distribution Board **WC** - Water Closet **W/D** - Washer cum Dryer **AC** - Aircon Ledge

All plans are subjected to amendments as may be approved by the relevant authorities. Floor areas are approximate measurements and are subjected to final survey.
 The balcony shall not be enclosed unless with the approved screen. For an illustration of the approved balcony screen, please refer to 'Annexure 1' of this brochure.



Key plan not to scale.



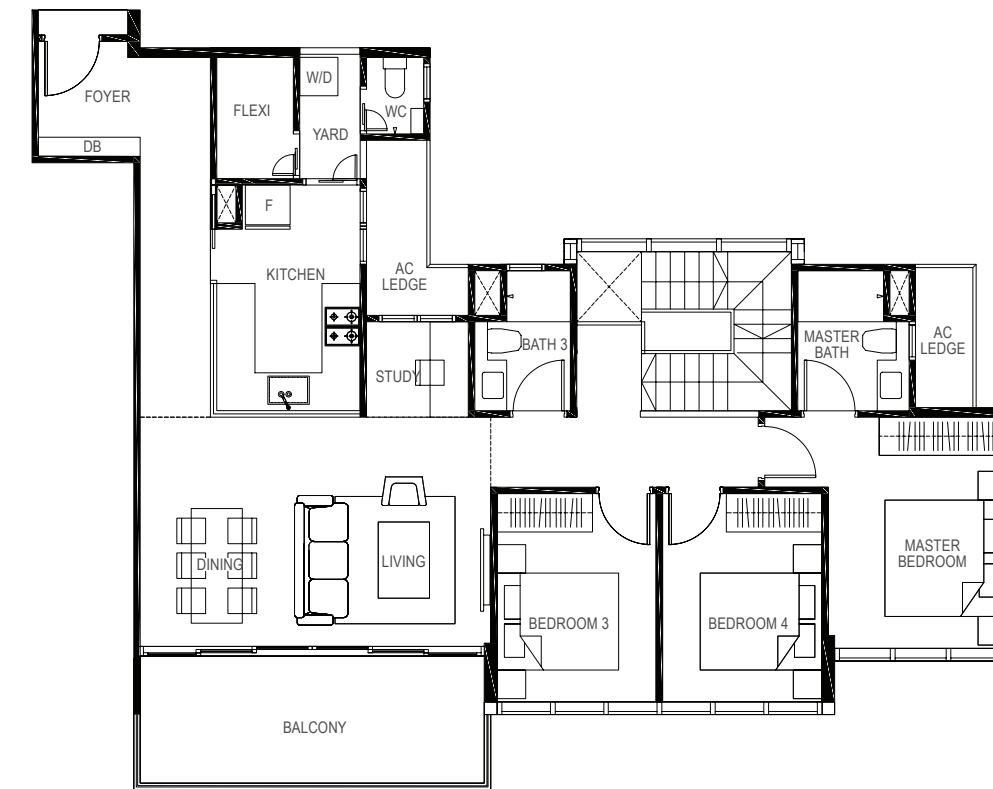
TYPE D4M

4-BEDROOM + STUDY

171 sq m / (approx. 1841 sq ft)

INCLUSIVE OF 16 SQ M BALCONY, 6 SQ M VOID, 6 SQ M AC LEDGE & 22 SQ M STRATA CARPARK

BLK 9 #01-15

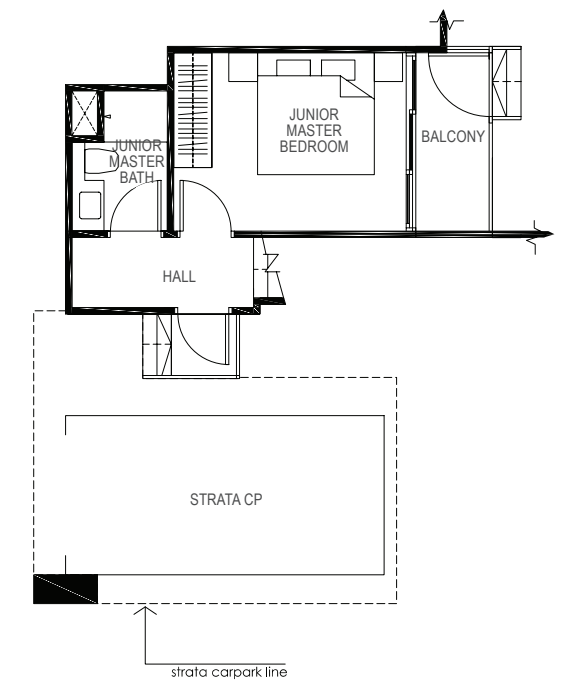


UPPER MEZZANINE

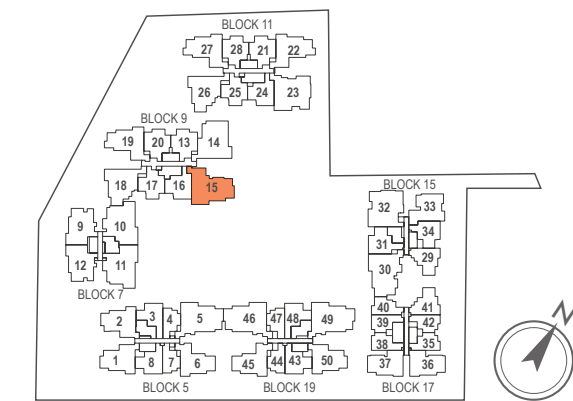


LEGEND:
F - Fridge **DB** - Distribution Board **WC** - Water Closet **W/D** - Washer cum Dryer **AC** - Aircon Ledge

All plans are subjected to amendments as may be approved by the relevant authorities. Floor areas are approximate measurements and are subjected to final survey.
 The balcony shall not be enclosed unless with the approved screen. For an illustration of the approved balcony screen, please refer to 'Annexure 1' of this brochure.



LOWER MEZZANINE



Key plan not to scale.



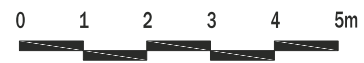
TYPE D5

4-BEDROOM

113 sq m / (approx. 1216 sq ft)

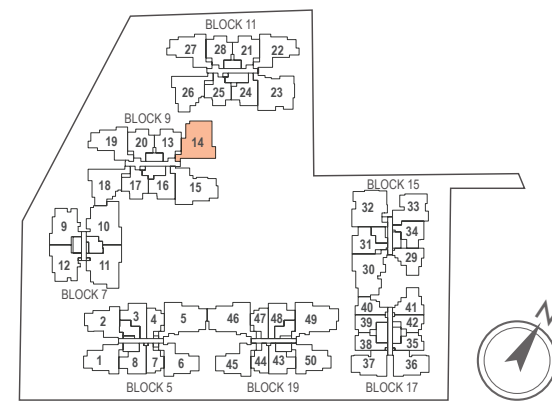
INCLUSIVE OF 8 SQ M BALCONY & 5 SQ M AC LEDGE

- BLK 9 #02-14
- #03-14
- #04-14
- #05-14



LEGEND:
F - Fridge **DB** - Distribution Board **WC** - Water Closet **W/D** - Washer cum Dryer **AC** - Aircon Ledge

All plans are subjected to amendments as may be approved by the relevant authorities. Floor areas are approximate measurements and are subjected to final survey.
 The balcony shall not be enclosed unless with the approved screen. For an illustration of the approved balcony screen, please refer to 'Annexure 1' of this brochure.



Key plan not to scale.

TYPE D5M

4-BEDROOM + STUDY

162 sq m / (approx. 1744 sq ft)

INCLUSIVE OF 12 SQ M BALCONY, 5 SQ M VOID, 6 SQ M AC LEDGE & 23 SQ M STRATA CARPARK

- BLK 9 #01-14

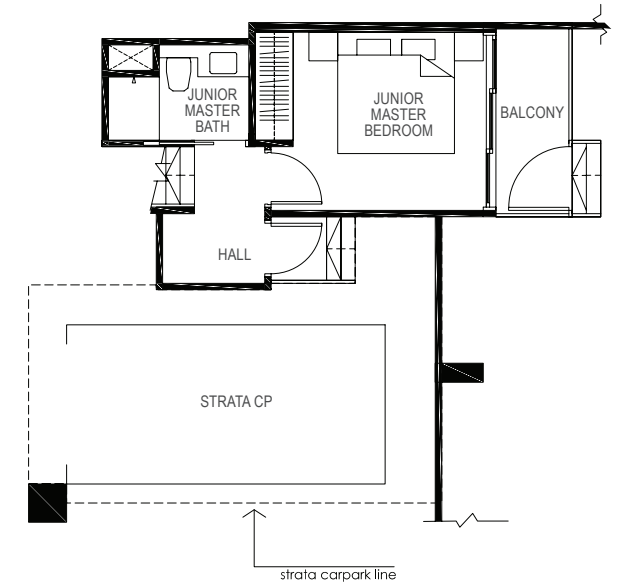


UPPER MEZZANINE

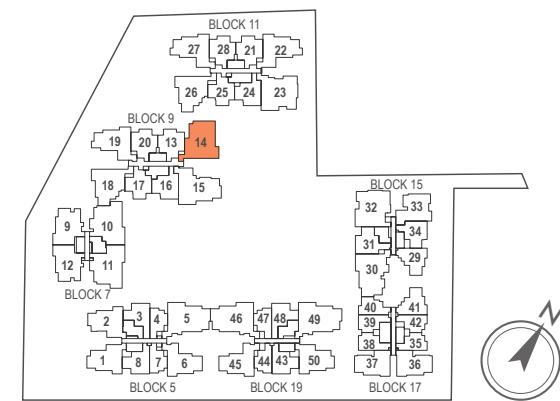


LEGEND:
F - Fridge **DB** - Distribution Board **WC** - Water Closet **W/D** - Washer cum Dryer **AC** - Aircon Ledge

All plans are subjected to amendments as may be approved by the relevant authorities. Floor areas are approximate measurements and are subjected to final survey.
 The balcony shall not be enclosed unless with the approved screen. For an illustration of the approved balcony screen, please refer to 'Annexure 1' of this brochure.



LOWER MEZZANINE



Key plan not to scale.

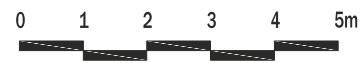
TYPE D6A

4-BEDROOM

118 sq m / (approx. 1270 sq ft)

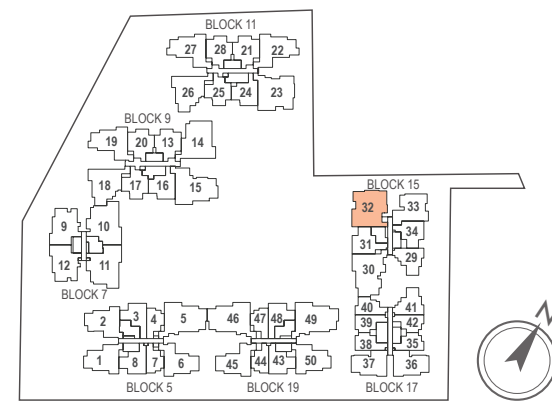
INCLUSIVE OF 11 SQ M BALCONY & 5 SQ M AC LEDGE

BLK 15 #02-32
#03-32
#04-32



LEGEND:
F - Fridge DB - Distribution Board WC - Water Closet W/D - Washer cum Dryer AC - Aircon Ledge

All plans are subjected to amendments as may be approved by the relevant authorities. Floor areas are approximate measurements and are subjected to final survey.
The balcony shall not be enclosed unless with the approved screen. For an illustration of the approved balcony screen, please refer to 'Annexure 1' of this brochure.



Key plan not to scale.

TYPE D6AM

4-BEDROOM

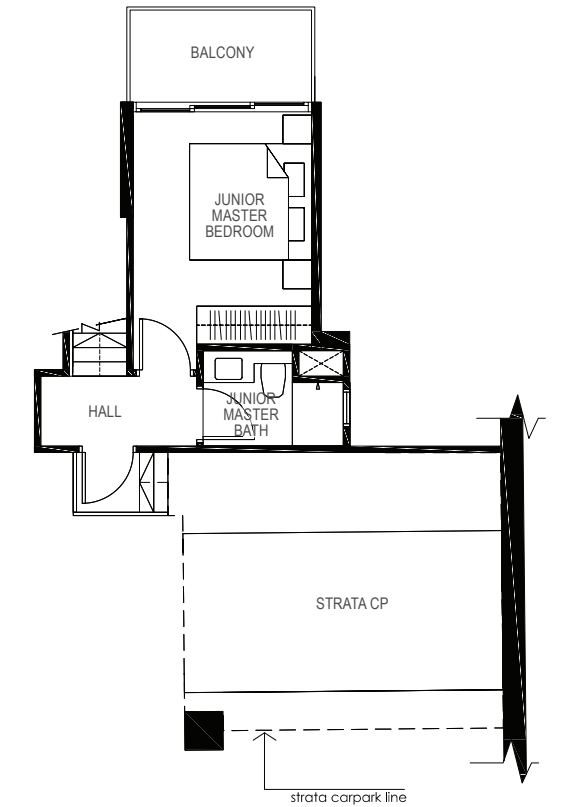
164 sq m / (approx. 1765 sq ft)

INCLUSIVE OF 16 SQ M BALCONY, 6 SQ M VOID, 6 SQ M AC LEDGE & 22 SQ M STRATA CARPARK

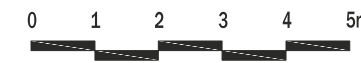
BLK 15 #01-32



UPPER MEZZANINE

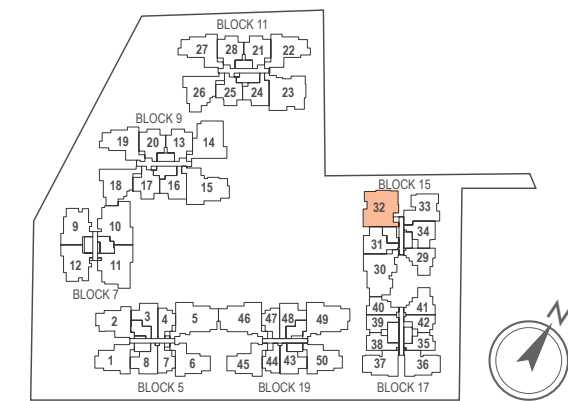


LOWER MEZZANINE



LEGEND:
F - Fridge DB - Distribution Board WC - Water Closet W/D - Washer cum Dryer AC - Aircon Ledge

All plans are subjected to amendments as may be approved by the relevant authorities. Floor areas are approximate measurements and are subjected to final survey.
The balcony shall not be enclosed unless with the approved screen. For an illustration of the approved balcony screen, please refer to 'Annexure 1' of this brochure.



Key plan not to scale.

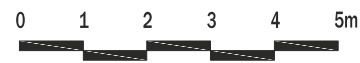
TYPE D6B

4-BEDROOM

122 sq m / (approx. 1313 sq ft)

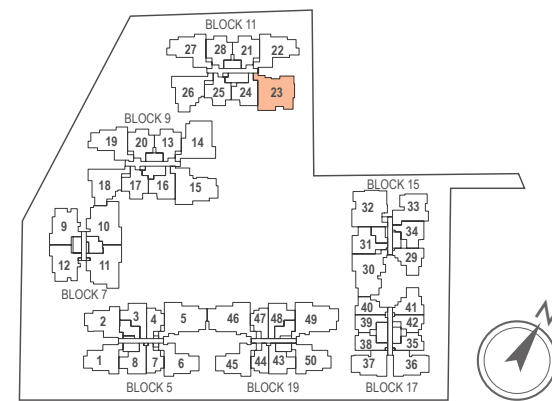
INCLUSIVE OF 11 SQ M BALCONY & 7 SQ M AC LEDGE

BLK 11 #02-23
#03-23
#04-23



LEGEND:
F - Fridge DB - Distribution Board WC - Water Closet W/D - Washer cum Dryer AC - Aircon Ledge

All plans are subjected to amendments as may be approved by the relevant authorities. Floor areas are approximate measurements and are subjected to final survey.
The balcony shall not be enclosed unless with the approved screen. For an illustration of the approved balcony screen, please refer to 'Annexure 1' of this brochure.



Key plan not to scale.



TYPE D6BM

4-BEDROOM

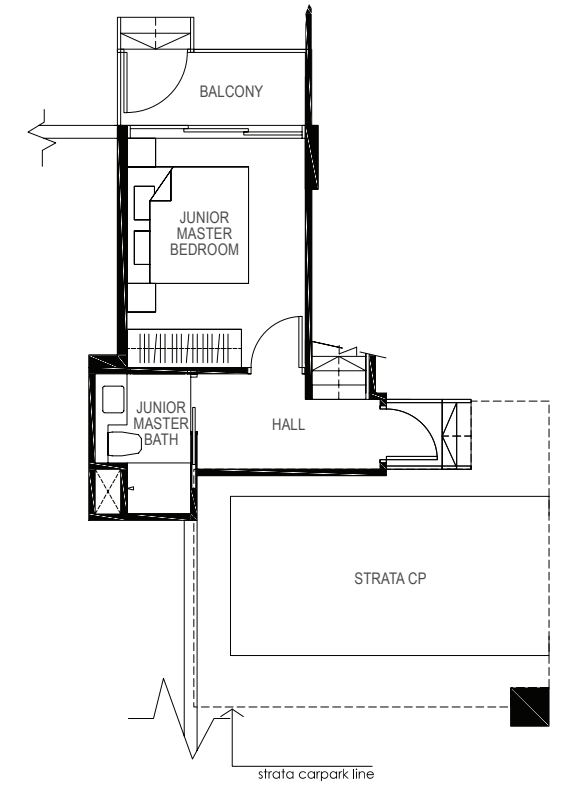
172 sq m / (approx. 1851 sq ft)

INCLUSIVE OF 15 SQ M BALCONY, 5 SQ M VOID, 9 SQ M AC LEDGE & 22 SQ M STRATA CARPARK

BLK 11 #01-23



UPPER MEZZANINE

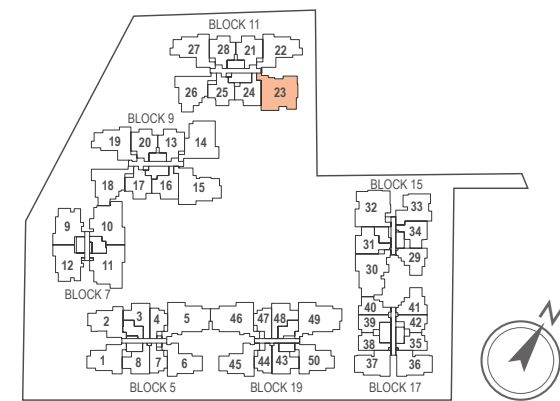


LOWER MEZZANINE



LEGEND:
F - Fridge DB - Distribution Board WC - Water Closet W/D - Washer cum Dryer AC - Aircon Ledge

All plans are subjected to amendments as may be approved by the relevant authorities. Floor areas are approximate measurements and are subjected to final survey.
The balcony shall not be enclosed unless with the approved screen. For an illustration of the approved balcony screen, please refer to 'Annexure 1' of this brochure.



Key plan not to scale.



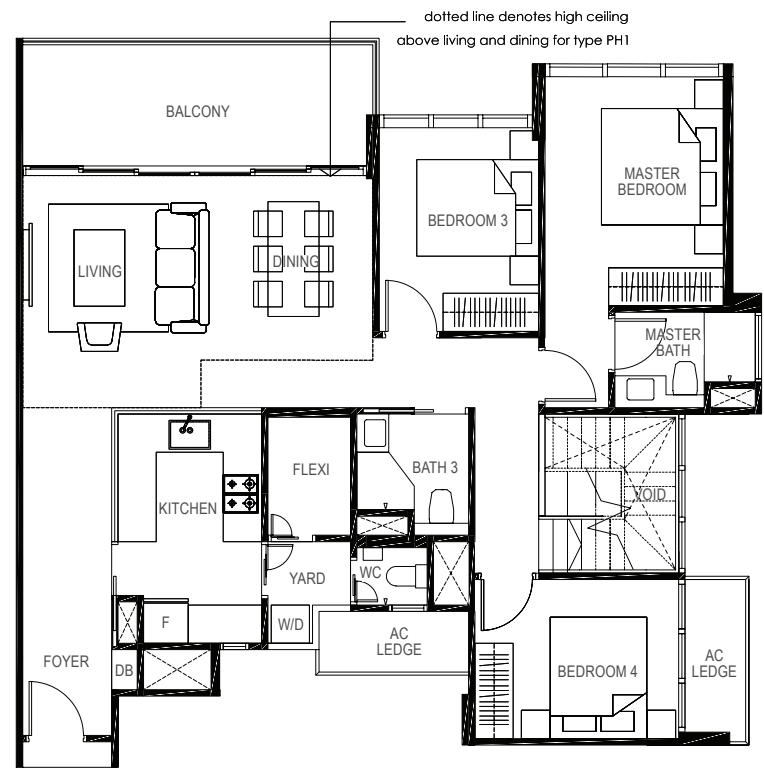
TYPE PH1

4-BEDROOM

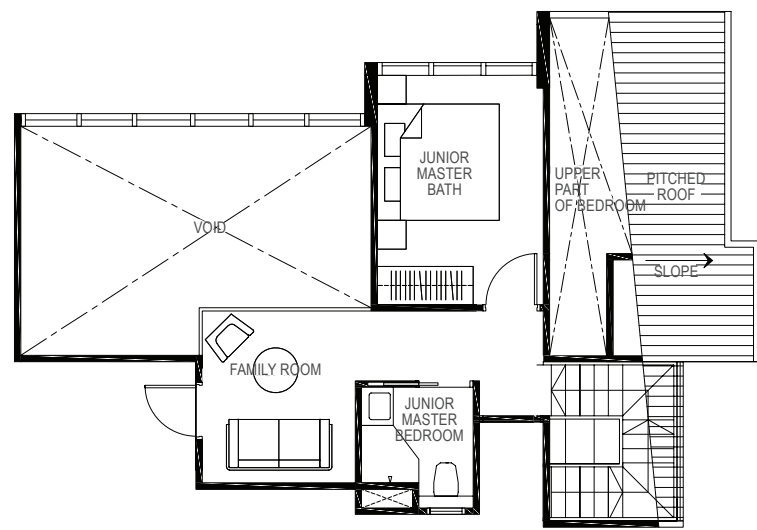
169 sq m / (approx. 1819 sq ft)

INCLUSIVE OF 11 SQ M BALCONY, 5 SQ M AC LEDGE & 35 SQ M VOID

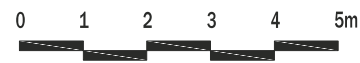
BLK 15 #05-32



LOWER PENTHOUSE

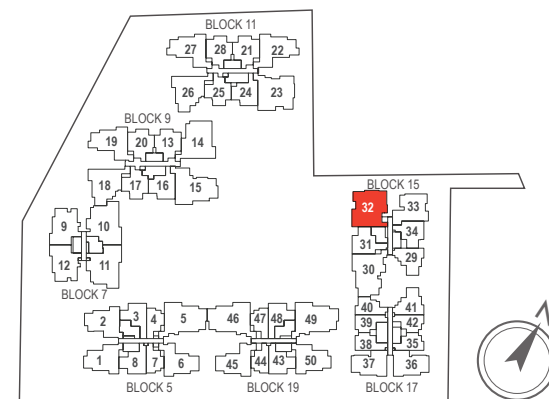


UPPER PENTHOUSE



LEGEND:
F - Fridge **DB** - Distribution Board **WC** - Water Closet **W/D** - Washer cum Dryer **AC** - Aircon Ledge

All plans are subjected to amendments as may be approved by the relevant authorities. Floor areas are approximate measurements and are subjected to final survey.
 The balcony shall not be enclosed unless with the approved screen. For an illustration of the approved balcony screen, please refer to 'Annexure 1' of this brochure.



Key plan not to scale.

TYPE PH2

4-BEDROOM + STUDY

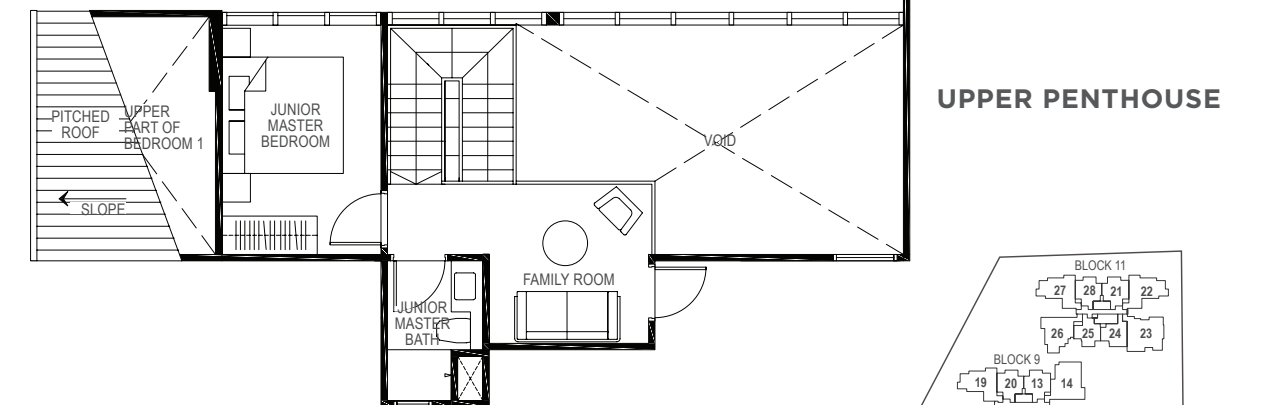
169 sq m / (approx. 1819 sq ft)

INCLUSIVE OF 12 SQ M BALCONY, 6 SQ M AC LEDGE & 31 SQ M VOID

BLK 15 #05-30



LOWER PENTHOUSE

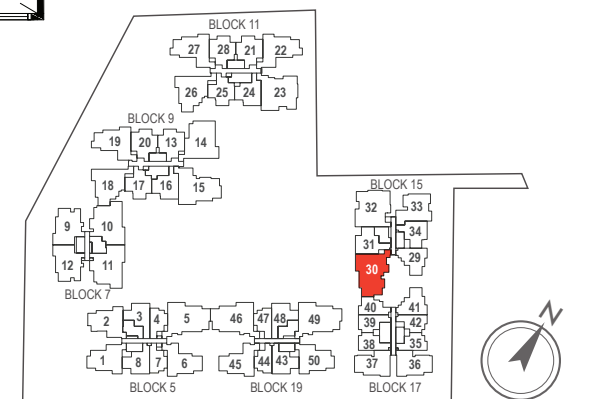


UPPER PENTHOUSE



LEGEND:
F - Fridge **DB** - Distribution Board **WC** - Water Closet **W/D** - Washer cum Dryer **AC** - Aircon Ledge

All plans are subjected to amendments as may be approved by the relevant authorities. Floor areas are approximate measurements and are subjected to final survey.
 The balcony shall not be enclosed unless with the approved screen. For an illustration of the approved balcony screen, please refer to 'Annexure 1' of this brochure.



Key plan not to scale.

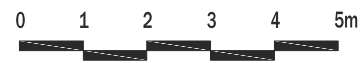
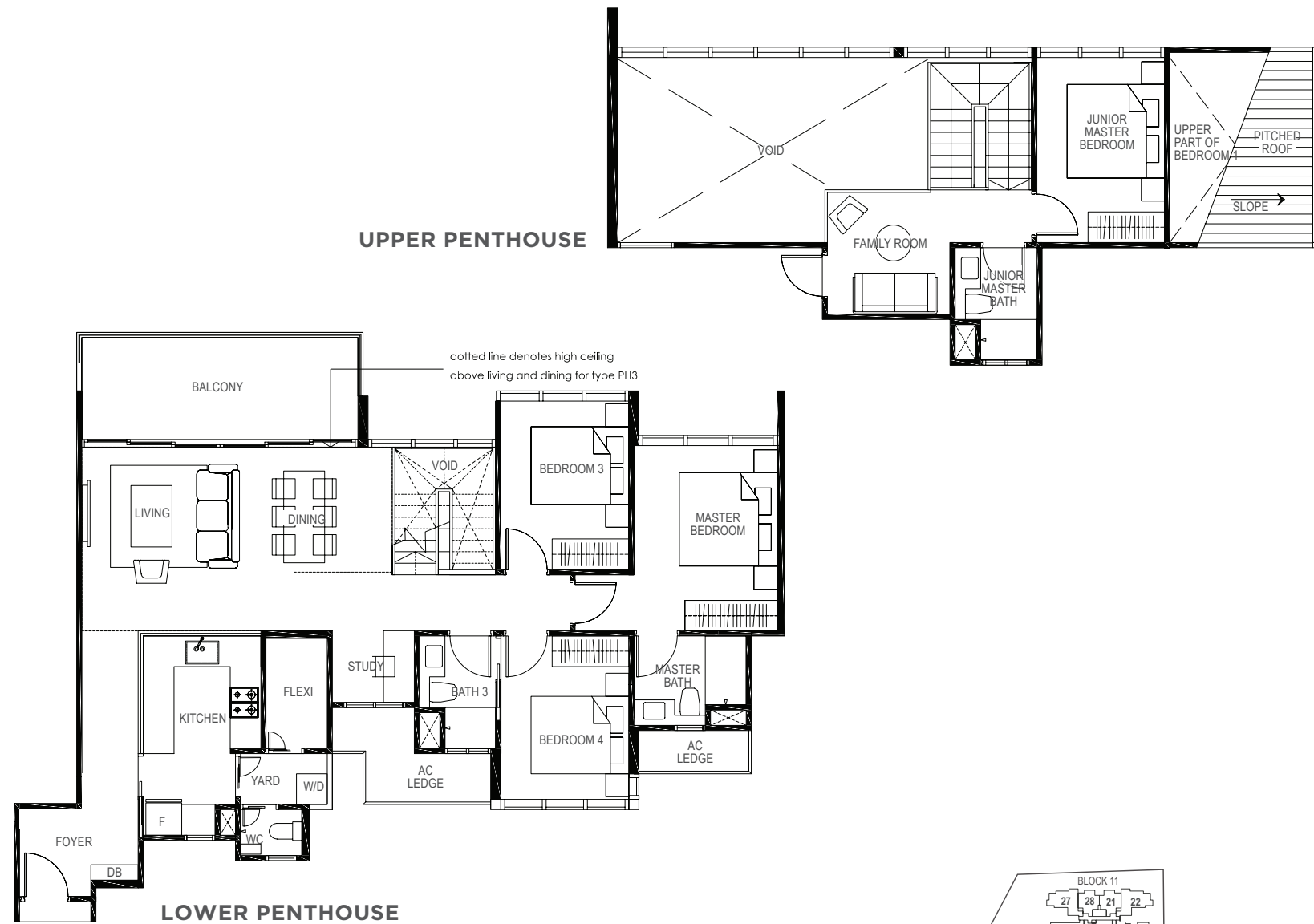
TYPE PH3

4-BEDROOM + STUDY

169 sq m / (approx. 1819 sq ft)

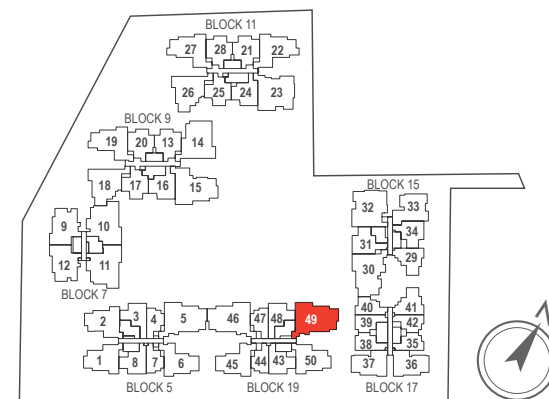
INCLUSIVE OF 12 SQ M BALCONY, 6 SQ M AC LEDGE & 31 SQ M VOID

BLK 19 #05-49



LEGEND:
F - Fridge **DB** - Distribution Board **WC** - Water Closet **W/D** - Washer cum Dryer **AC** - Aircon Ledge

All plans are subjected to amendments as may be approved by the relevant authorities. Floor areas are approximate measurements and are subjected to final survey.
 The balcony shall not be enclosed unless with the approved screen. For an illustration of the approved balcony screen, please refer to 'Annexure 1' of this brochure.



Key plan not to scale.

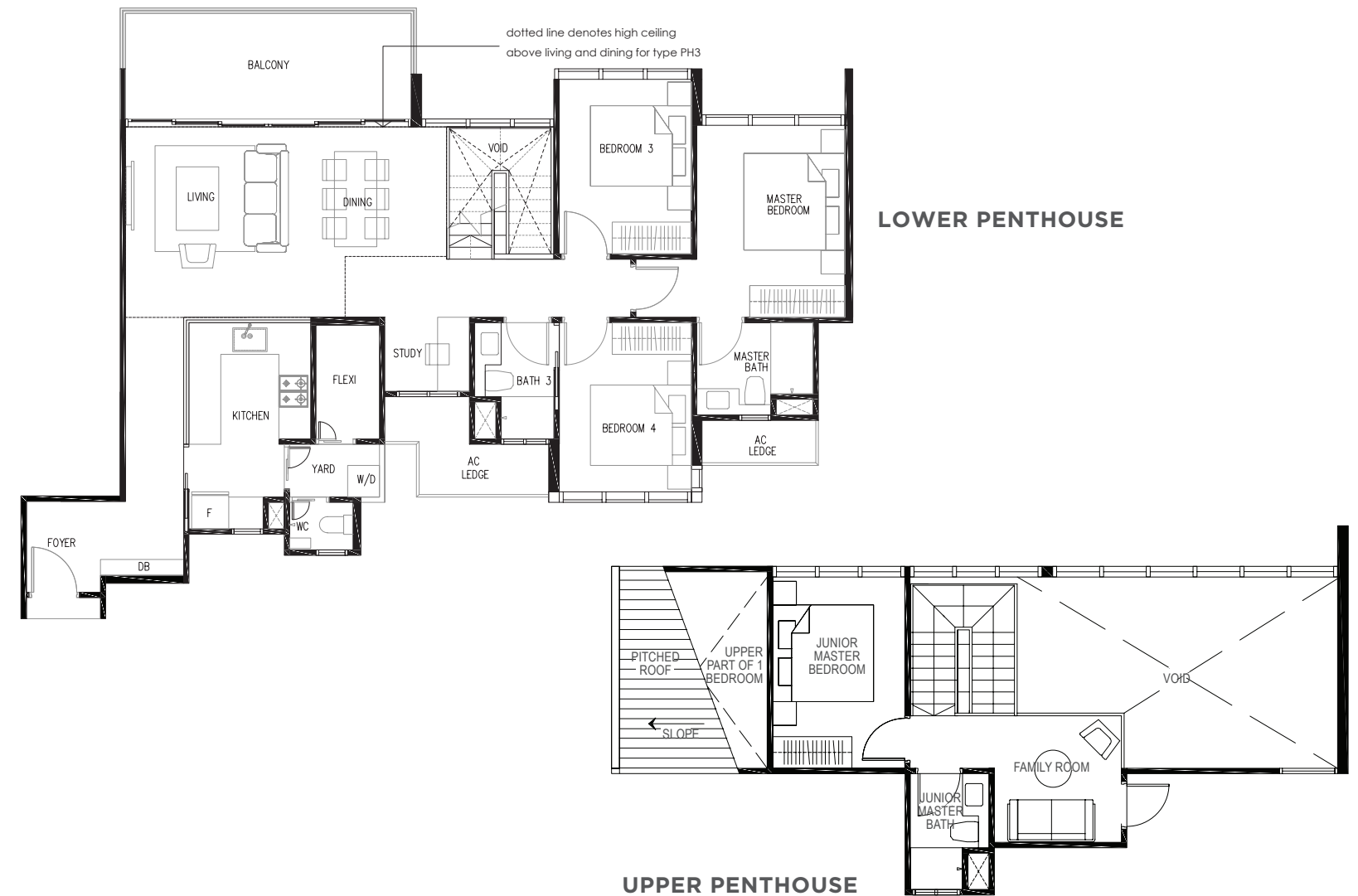
TYPE PH4

4-BEDROOM + STUDY

173 sq m / (approx. 1862 sq ft)

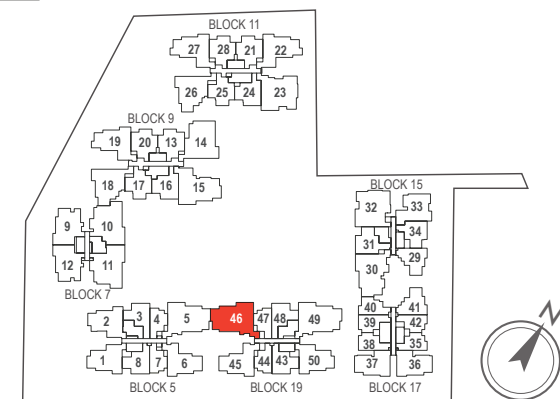
INCLUSIVE OF 12 SQ M BALCONY, 6 SQ M AC LEDGE & 34 SQ M VOID

BLK 19 #05-46



LEGEND:
F - Fridge **DB** - Distribution Board **WC** - Water Closet **W/D** - Washer cum Dryer **AC** - Aircon Ledge

All plans are subjected to amendments as may be approved by the relevant authorities. Floor areas are approximate measurements and are subjected to final survey.
 The balcony shall not be enclosed unless with the approved screen. For an illustration of the approved balcony screen, please refer to 'Annexure 1' of this brochure.



Key plan not to scale.

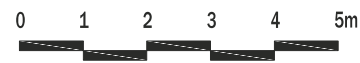
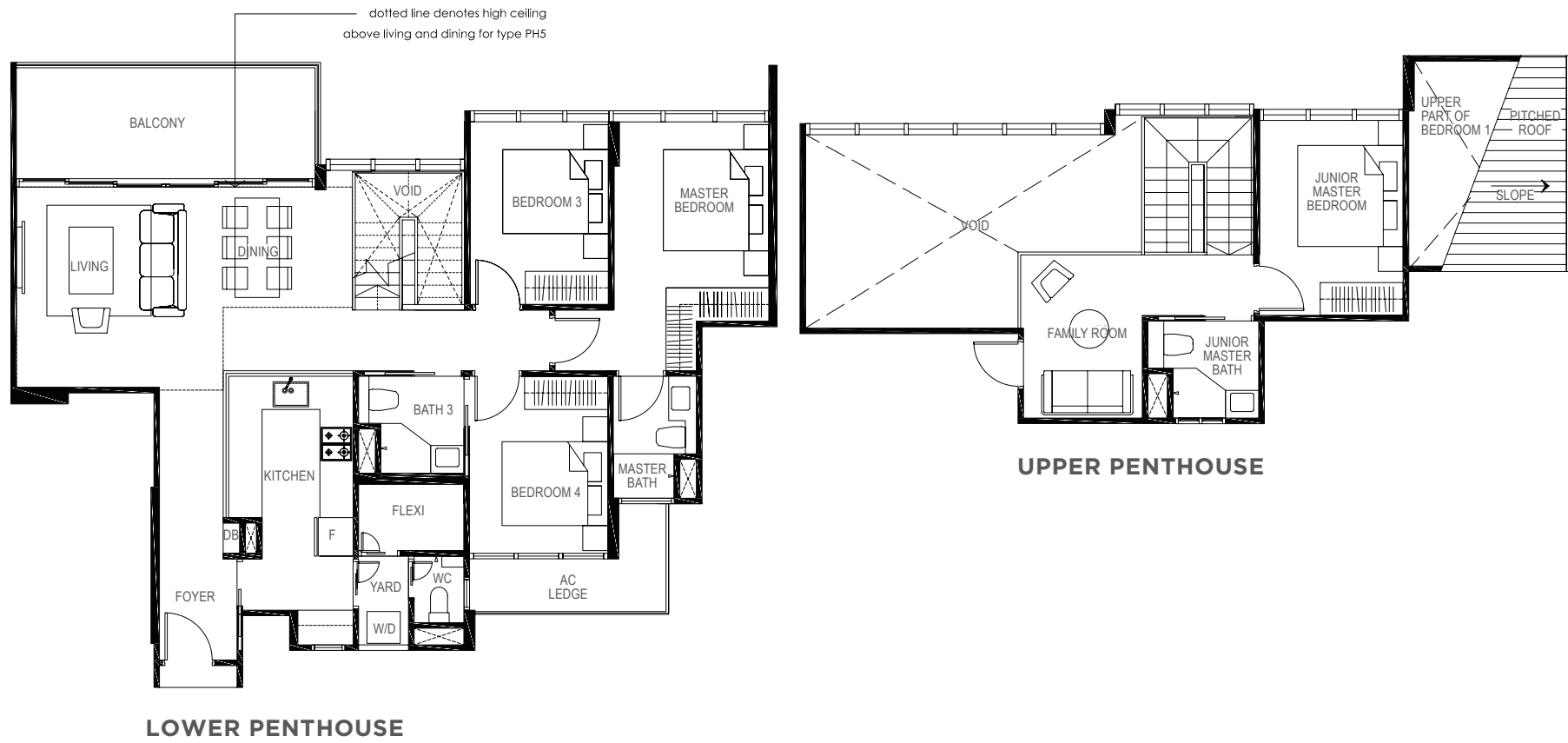
TYPE PH5

4-BEDROOM

168 sq m / (approx. 1808 sq ft)

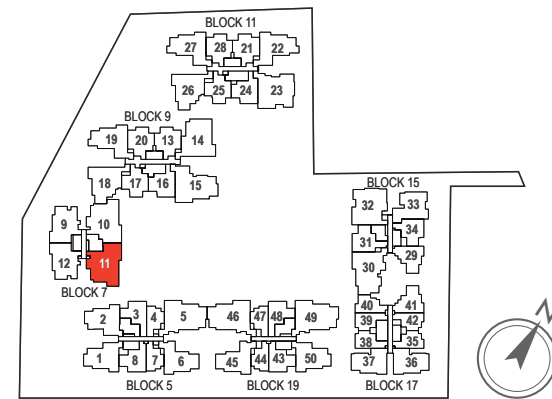
INCLUSIVE OF 12 SQ M BALCONY, 5 SQ M AC LEDGE & 33 SQ M VOID

BLK 7 #05-11



LEGEND:
F - Fridge **DB** - Distribution Board **WC** - Water Closet **W/D** - Washer cum Dryer **AC** - Aircon Ledge

All plans are subjected to amendments as may be approved by the relevant authorities. Floor areas are approximate measurements and are subjected to final survey.
 The balcony shall not be enclosed unless with the approved screen. For an illustration of the approved balcony screen, please refer to 'Annexure 1' of this brochure.



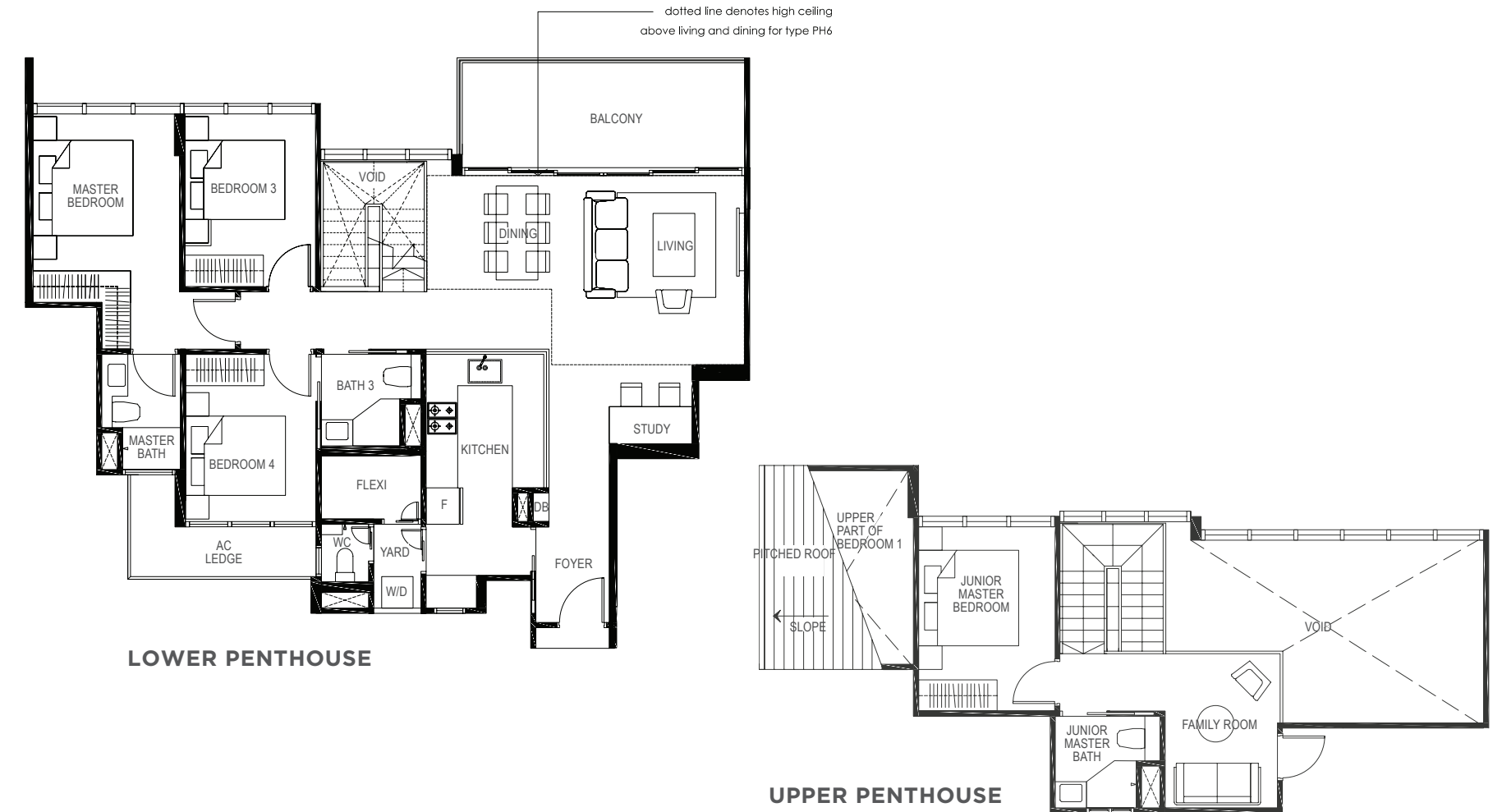
TYPE PH6

4-BEDROOM + STUDY

172 sq m / (approx. 1851 sq ft)

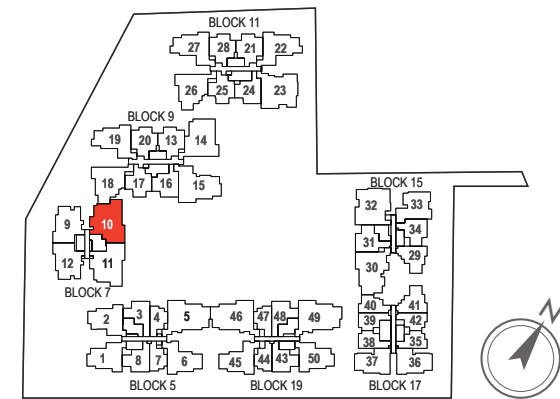
INCLUSIVE OF 12 SQ M BALCONY, 5 SQ M AC LEDGE & 33 SQ M VOID

BLK 7 #05-10



LEGEND:
F - Fridge **DB** - Distribution Board **WC** - Water Closet **W/D** - Washer cum Dryer **AC** - Aircon Ledge

All plans are subjected to amendments as may be approved by the relevant authorities. Floor areas are approximate measurements and are subjected to final survey.
 The balcony shall not be enclosed unless with the approved screen. For an illustration of the approved balcony screen, please refer to 'Annexure 1' of this brochure.



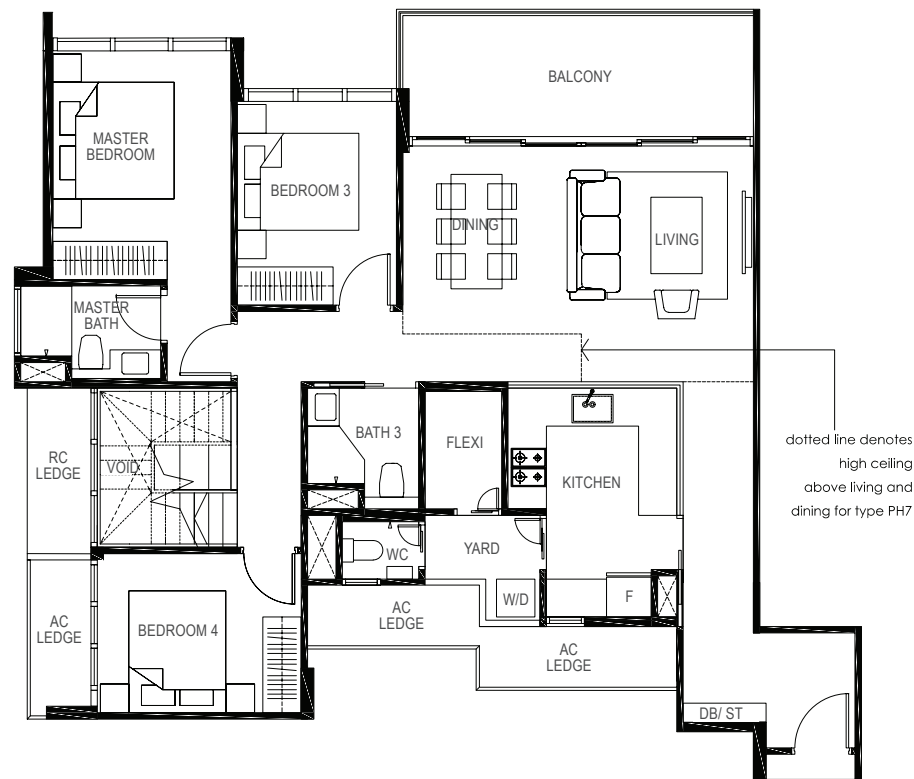
TYPE PH7

4-BEDROOM

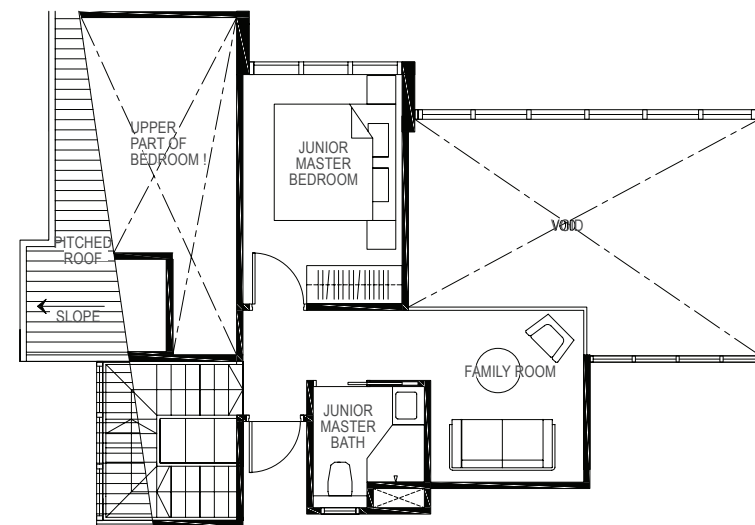
183 sq m / (approx. 1970 sq ft)

INCLUSIVE OF 12 SQ M BALCONY, 6 SQ M AC LEDGE & 41 SQ M VOID

BLK 11 #05-23



LOWER PENTHOUSE



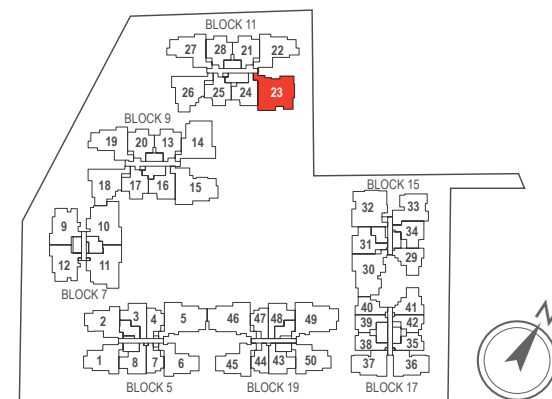
UPPER PENTHOUSE

dotted line denotes high ceiling above living and dining for type PH7



LEGEND:
F - Fridge **DB** - Distribution Board **WC** - Water Closet **W/D** - Washer cum Dryer **AC** - Aircon Ledge

All plans are subjected to amendments as may be approved by the relevant authorities. Floor areas are approximate measurements and are subjected to final survey.
 The balcony shall not be enclosed unless with the approved screen. For an illustration of the approved balcony screen, please refer to 'Annexure 1' of this brochure.



Key plan not to scale.

SPECIFICATIONS

1. FOUNDATION

Reinforced concrete bored piles and/ or reinforced concrete footings and/or raft foundation and/or driven piles.

2. SUPERSTRUCTURE

Reinforced concrete and/or Pre-cast reinforced concrete and/or structural steel.

3. WALLS

- a. External Wall: Reinforced concrete and/or light weight concrete panel and/or pre-cast reinforced concrete wall and/or curtain wall system.
- b. Internal Wall: Reinforced concrete wall and/or light weight concrete panel and/or pre-cast reinforced concrete wall and/or concrete blocks and/or drywall partition.

4. ROOF

Reinforced concrete roof and/or metal roof with insulation and waterproofing system

5. CEILING

a. Apartment

- i Kitchen, Bathroom, WC, Utility, Yard, Unit Corridor, Balcony, AC Ledge

Concrete slab and/or ceiling board and/or ceiling box-up and/or cement sand plaster and/or skim coat with paint finish to designated area (where applicable)

Foyer

1st Storey: Room clearance not lower than 2700 mm;
 Typical Storey: Room clearance not lower than 2400 mm.
 Penthouse: Room clearance not lower than 2700 mm.

1st Storey: Bulkhead ceiling not lower than 2700 mm;
 Typical Storey: Bulkhead ceiling not lower than 2400 mm;
 Penthouse: Bulkhead ceiling not lower than 2400 mm.

Living/Dining

1st Storey: Room clearance not lower than 4650 mm;
 Typical Storey: Room clearance not lower than 2900 mm.
 Penthouse: Room clearance not lower than 6200 mm.

1st Storey: Bulkhead ceiling not lower than 2700 mm;
 Typical Storey: Bulkhead ceiling not lower than 2400 mm;
 Penthouse: Bulkhead ceiling not lower than 2400 mm.

Bedroom:

1st Storey: Room clearance not lower than 4650 mm;
 Typical Storey: Room clearance not lower than 2900 mm.
 Penthouse: Room clearance not lower than 2900 mm. Bedroom under the sloping roof not lower than 2900mm - 6200mm.

- ii Other parts of the apartment:

1st Storey: Bulkhead ceiling not lower than 2700 mm;
 Typical Storey: Bulkhead ceiling not lower than 2400 mm.
 Penthouse: Bulkhead ceiling not lower than 2400 mm.

Family / study:

1st Storey: Room clearance not lower than 4650 mm;
 Typical Storey: Room clearance not lower than 2900 mm
 Penthouse: Room clearance not lower than 2900 mm.

1st Storey: Bulkhead ceiling not lower than 2700 mm;
 Typical Storey: Bulkhead ceiling not lower than 2400 mm.
 Penthouse: Bulkhead ceiling not lower than 2400 mm.

Kitchen:

1st Storey: Ceiling not lower than 2700 mm
 Typical Storey: Ceiling not lower than 2400 mm

Yard / Utility:

1st Storey: Ceiling not lower than 4650 mm
 Typical Storey: Ceiling not lower than 2900 mm

Bathrooms, powder rooms, WCs and other toilets:

Ceiling not lower than 2400 mm
 Bulkhead ceiling not lower than 2200mm

Unit Corridors:

1st Storey: Ceiling not lower than 2700mm
 Typical Storey: Ceiling not lower than 2400mm

Balcony / A/C ledge:

1st Storey: Ceiling not lower than 4650 mm
 Typical Storey: Ceiling not lower than 2900 mm

b. Common Area

- i Lift lobbies at Basement, 1st storey and typical lobbies

Moisture resistant fibrous plaster board and/or calcium silicate board with paint and/or cement sand plaster with paint finish

Level 1 Lift Lobby:

Ceiling not lower than 4300 mm

Typical Lift Lobby:

Ceiling not lower than 2550 mm

- ii Generally

Skim coat and/or cement sand plaster with paint finish and/or bulkhead to designated areas

6. FINISHES

a. Wall

- i. Unit

Living, Dining, Bedroom, Family Room, Utility, Yard, Study, HS: Skim coat and/or cement sand plaster with paint finish

Kitchen, Bathroom, WC: Tiles and/or skim coat and/or cement sand plaster with paint finish

ii. Common Area	Lift lobbies:	Tiles and/or skim coat and/or cement sand plaster with paint finish	v 1 toilet paper holder vi 1 mirror	Grohe -
	Basement Carpark:	Skim coat and/ or cement sand plaster with paint finish	c. WC (where applicable) i 1 shower set ii 1 bib tap iii 1 basin tap iv 1 pedestal water closet v 1 toilet paper holder	<u>Brands</u> - - - Johnson Suisse Grohe

b. Floor

i. Unit	Living, Dining, Kitchen, Bathrooms, Balcony, Family Room, WC, Utility, Yard, Study	Tiles		
	Bedroom	Engineered Timber Flooring		
	AC Ledge	Cement sand screed		
ii. Common Area	Lift lobbies	Tiles		
	Storey Shelter	Cement sand screed		
	Basement Carpark:	Floor hardener and epoxy paint		

10. ELECTRICAL INSTALLATION

a. Electrical wiring within the Unit shall generally be concealed, except those above the suspended (false) ceiling, within DB and at the AC ledge, which shall be in exposed conduits, trays or trunking.

b. Refer to Electrical Schedule for details.

11. TV / CABLE SERVICES / FM / TELEPHONE POINTS

Refer to Electrical Schedule for details.

12. LIGHTNING PROTECTION

Lightning Protection System shall be provided in accordance with current edition of Singapore Standard SS555: 2010.

13. PAINTING

- a. External Wall Spray textured coating and/ or emulsion paint and/ or other approved exterior paint
- b. Internal Wall Emulsion paint

14. WATERPROOFING

Waterproofing shall be provided to floor slabs of Bathrooms, Kitchen, WCs, Yard, Balcony, Reinforced Concrete Flat Roof, Planter, Swimming Pool and other Pools, Swimming Pool Balancing Tank, Landscape Deck, Basement Carparks (where applicable)

15. DRIVEWAY AND CAR PARK

- a. Surface driveway/ Drop Off and Ramp Concrete/stone pavers and/or tile and/or tarmac and/or concrete floor and/or stone and/ or grass-cell pavers to external driveway at designated areas (where applicable)
- b. Basement Car park Reinforced concrete slab with floor hardener

16. RECREATIONAL FACILITIES

- | | |
|------------------------|--------------------------|
| 1) Arrival Canopy | 11) 50m Lap Pool |
| 2) Grand Arrival Plaza | 12) Water Wall |
| 3) Meeting Pods | 13) Multi-purpose Lawn |
| 4) Open Lawn | 14) Pavilion |
| 5) Grand Staircase | 15) Kid's Playground |
| 6) Clubhouse | 16) Outdoor Fitness Area |
| 7) Pool Deck | 17) Pocket Garden |
| 8) BBQ Pavilion | 18) Scented Garden |
| 9) Kid's Pool | 19) Reflexology Path |
| 10) Spa Pool | 20) Butterfly Garden |

- 21) Courtyard
- 22) Green Wall
- 23) Garden Walk

17. ADDITIONAL ITEMS

a. Kitchen Cabinets	Kitchen cabinets with quartz countertop Sink Mixer	<u>Brands</u> Franke Grohe	c. Wardrobe	Quality wardrobe to all bedrooms
b. Kitchen Appliances	Telescopic hood Built-in Induction hob (Type A & B) Built-in Gas hob (Type C, D & PH) Built-in Microwave with Grill and convection (Type A & B) Built-in oven (Type C, D & PH) Refrigerator Washer cum Dryer	Electrolux Electrolux Electrolux Electrolux Electrolux Electrolux Electrolux	d. Bathroom Vanity	Bathroom cabinets with quartz countertop
			e. Hot Water Supply	Hot water supply shall be provided to all bathrooms and kitchen
			f. Security System	Intercom System to Units Access Control System at designated common areas Automatic car barrier access system provided at the Main Entrance Closed circuit television system (CCTV) at designated common areas
			g. Air-Conditioning	Wall mounted fan coil units (FCU) to Living/ Dining, Bedrooms

7. WINDOWS

All windows of the apartment shall be aluminium framed window with clear and/or tinted and/or frosted and/or spandrel glass (where applicable) and/or laminated glass

8. DOORS

- a. Main Entrance Approved fire-rated timber door complete with digital lockset
- b. Living/ Dining / Balcony Aluminium framed sliding and/or swing glass door and/or fixed glass panel with clear and/or tinted and/or frosted glass
- c. Bedroom, Bathroom Hollow core timber door
- d. Kitchen Timber framed sliding door with fixed glass panel and/or timber door and/or sliding glass door
- e. Private Roof Terrace Aluminium framed sliding and/or swing glass door and/or fixed glass panel with clear and/or tinted and/or frosted glass
- f. WC, Utility, Yard PVC slide and swing door
- g. Storey Shelter Approved blast-proof metal door
- h. Household Shelter Approved blast-proof metal door

Good quality locksets and ironmongery to be provided to all doors.

9. SANITARY FITTINGS

a. Master Bathroom	<u>Brands</u>
i 1 shower cubicle with 1 shower mixer set with rain shower	Grohe
ii 1 wash basin	Roca
iii 1 mixer	Grohe
iv 1 wall hung water closet	Laufen
v 1 toilet paper holder	Grohe
vi 1 mirror	
b. Common Bathroom	<u>Brands</u>
i 1 shower cubicle with 1 shower mixer set	Grohe
ii 1 wash basin	Roca
iii 1 mixer	Grohe
iv 1 wall hung water closet	Laufen

ELECTRICAL SCHEDULE

Unit Type	Lighting Point	13A Switched Socket	13A Switched Socket For Washer cum Dryer	13A Switched Socket For Fridge	Aircon Isolator	Water Heater	TV Point	Data Point	Telephone Point	Cooker Hood Point	Cooker Hob Point	Induction Hob Point	Electric Oven Point	Microwave Oven Point	Bell Point	Av Intercom Unit	Smoke Detector
A1P / A1	8	11	1	1	1	2	2	2	2	1	0	1	0	1	1	1	1
A2P / A2	8	11	1	1	1	2	2	2	2	1	0	1	0	1	1	1	1
A3P / A3	8	11	1	1	1	2	2	2	2	1	0	1	0	1	1	1	1
A4P / A4	8	11	1	1	1	2	2	2	2	1	0	1	0	1	1	1	1
B1P / B1	10	14	1	1	2	2	3	3	3	1	0	1	0	1	1	1	1
B2P / B2	10	14	1	1	2	2	3	3	3	1	0	1	0	1	1	1	1
B3P / B3	10	14	1	1	2	2	3	3	3	1	0	1	0	1	1	1	1
B4P / B4	10	14	1	1	2	2	3	3	3	1	0	1	0	1	1	1	1
B5P / B5	10	14	1	1	2	2	3	3	3	1	0	1	0	1	1	1	1
B6P / B6	10	15	1	1	2	2	3	3	3	1	0	1	0	1	1	1	1
B7P / B7	12	15	1	1	2	2	3	3	3	1	0	1	0	1	1	1	1
B8P / B8	9	14	1	1	2	2	3	3	3	1	0	1	0	1	1	1	1
C1P / C1	20	20	1	1	2	2	4	4	4	1	1	0	1	0	1	1	1
C2P / C2	18	20	1	1	2	2	4	4	5	1	1	0	1	0	1	1	1
C3P / C3	18	20	1	1	2	2	4	4	4	1	1	0	1	0	1	1	1
C4P / C4	16	20	1	1	2	2	4	4	4	1	1	0	1	0	1	1	1
C5P / C5	16	20	1	1	2	2	4	4	4	1	1	0	1	0	1	1	1
C6P / C6	16	20	1	1	2	2	4	4	4	1	1	0	1	0	1	1	1
C7P / C7	16	20	1	1	2	2	4	4	4	1	1	0	1	0	1	1	1
D1AM	27	26	1	1	3	4	5	6	5	1	1	0	1	0	2	1	1
D1BM	28	26	1	1	3	4	5	6	5	1	1	0	1	0	2	1	1
D1CM	28	26	1	1	3	4	5	6	5	1	1	0	1	0	2	1	1
D2M	27	26	1	1	3	4	5	6	5	1	1	0	1	0	2	1	1
D3AM	26	26	1	1	3	4	5	6	5	1	1	0	1	0	2	1	1
D3BM	26	25	1	1	3	4	5	5	5	1	1	0	1	0	2	1	1
D4M	27	26	1	1	3	4	5	6	5	1	1	0	1	0	2	1	1
D5M	26	26	2	1	3	4	5	6	5	1	1	0	1	0	2	1	1
D6AM	26	25	2	1	3	4	5	5	5	1	1	0	1	0	2	1	1
D6BM	26	25	2	1	3	4	5	5	5	1	1	0	1	0	2	1	1
D1A	21	23	1	1	3	3	5	5	5	1	1	0	1	0	1	1	1
D1B	21	23	1	1	3	3	5	5	5	1	1	0	1	0	1	1	1
D1C	21	23	1	1	3	3	5	5	5	1	1	0	1	0	1	1	1
D2	21	23	1	1	3	3	5	5	5	1	1	0	1	0	1	1	1

D3A	21	23	1	1	3	3	5	5	5	1	1	0	1	0	1	1	1
D3B	21	23	1	1	3	3	5	5	5	1	1	0	1	0	1	1	1
D4	21	23	1	1	3	3	5	5	5	1	1	0	1	0	1	1	1
D5M	18	23	1	1	3	3	5	5	5	1	1	0	1	0	1	1	1
D6A	21	23	1	1	3	3	5	5	5	1	1	0	1	0	1	1	1
D6B	21	23	1	1	3	3	5	5	5	1	1	0	1	0	1	1	1
PH1	26	26	1	1	3	4	6	6	6	1	1	0	1	0	1	1	1
PH2	27	28	1	1	3	4	6	6	6	1	1	0	1	0	1	1	1
PH3	27	26	1	1	3	4	6	6	6	1	1	0	1	0	1	1	1
PH4	27	26	1	1	3	4	6	6	6	1	1	0	1	0	1	1	1
PH5	26	25	1	1	3	4	6	6	6	1	1	0	1	0	1	1	1
PH6	27	26	1	1	3	4	6	6	6	1	1	0	1	0	1	1	1
PH7	27	25	1	1	3	4	6	6	6	1	1	0	1	0	1	1	1

NOTE :

1) All isolators for CU are subjected to A/C equipment configuration

Notes to Specifications

A. Air-conditioning system

To ensure good working condition of the air-conditioning system, the system has to be maintained and cleaned on a regular basis by the Purchaser. This includes the cleaning of filters, clearing of condensate pipes and charging of gas. The Purchaser is advised to engage his own contractor to service the air-conditioning system regularly.

B. Television and/or Internet Access

The Purchaser is liable to pay annual fee, subscription fee and such other fees to the television and/or internet service providers or any other relevant party or any relevant authorities. The Vendor is not responsible to make arrangements with any of the said parties for the service connection for their respective channels and/or internet access.

C. Materials, Fittings, Equipment, Finishes, Installations and Appliances

Subject to clause 14.3, the brand, colour and model as specified for all materials, fittings, equipment, finishes, installations and appliances to be supplied shall be provided subject to the Architect's selection and market availability.

D. Layout/Location of Fan Coil Units, Electrical Points, Television Points, Telecommunication Points, Audio Intercom System, Door Swing Positions and Plaster Ceiling Boards

Layout/Location of fan coil units, electrical points, television points, telecommunication points, audio intercom system, door swing positions and plaster ceiling boards are subject to the Architect's final decision and design.

E. Warranties

Where warranties are given by the manufacturers and/or contractors and/or suppliers of any of the equipment and/or appliances installed by the Vendor at the Unit, the Vendor shall assign to the Purchaser such warranties at the time when possession of the Unit is delivered to the Purchaser. Notwithstanding this assignment, the Vendor shall remain fully responsible for the performance of its obligations under clause 9 and clause 17.

F. False Ceiling

The false ceiling space provision allows for the optimal function and installation of M&E services. Access panels are allocated for ease of maintenance access to concealed M&E equipment for regular cleaning purposes. Where removal of equipment is needed, ceiling works will be required. Location of false ceiling is subject to the Architect's sole discretion and final design.

G. Glass

Glass is manufactured material that is not 100% pure. Invisible nickel sulphide impurities may cause spontaneous glass breakage, which may occur in all glass by all

manufacturers. The Purchaser is recommended to take up home insurance covering glass breakage to cover this possible event. Notwithstanding this note, the Vendor shall remain fully responsible for the performance of its obligations under clause 9 and clause 17.

H. Engineered Timber Flooring

Engineered Timber flooring is manufactured material which contains tonality differences to match natural wood finish. Thus, it is not possible to achieve total consistency of colour and grain in its selection and installation. Engineered timber floors are installed in modular planks and are subject to thermal expansion and contraction beyond the control of the builder and the vendor. Notwithstanding this note, the Vendor shall remain fully responsible for the performance of its obligations under clause 9 and clause 17.

I. Mechanical Ventilation System

Mechanical ventilation fans and ducting are provided to toilets which are not naturally ventilated.

To ensure good working condition of the mechanical ventilation system, the mechanical ventilation system for the exhaust system within internal toilets (where applicable) is to be maintained by the Purchaser on a regular basis.

J. Prefabricated Toilets

Certain bathroom and W.C. may be prefabricated construction and all penetrations are sealed at manufacturer's factory prior to installation on site. Any subsequent penetrations are not recommended as they will compromise the waterproofing warranty.

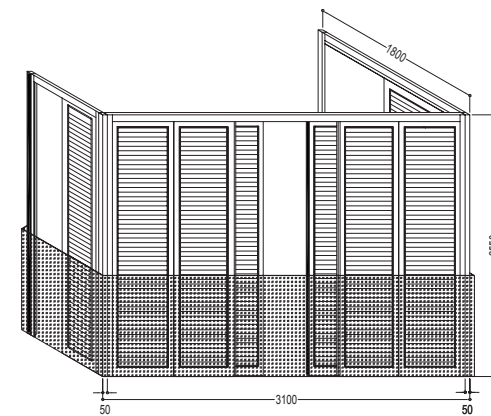
K. Wall

All wall finishes shall be terminated at false ceiling level. There will be no tiles/stone works behind kitchen cabinets/longbath/vanity cabinet/mirror.

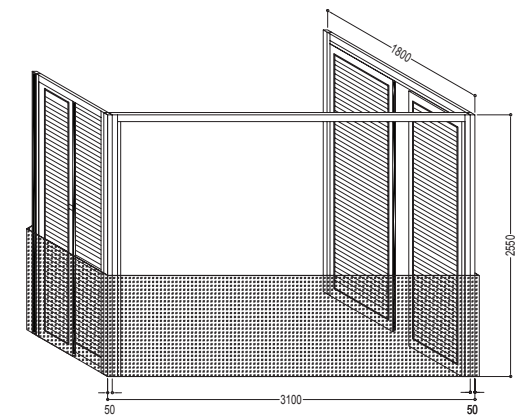
L. Cable Services

The Vendor shall endeavor to procure a service provider for cable television and/or internet services (the "Cable Services") to provide the necessary cabling or connection from its network to the Unit/Building and/or the Housing Project (or any part or parts thereof), so as to enable the Unit/Building and/or the Housing Project to receive the Cable Services. In the event, despite reasonable efforts being made by the Vendor, the Vendor is unable to procure any service provider to provide the said cabling or connection, thereby resulting in there being no Cable Services available in the Unit/Building and/or the Housing Project, the Vendor shall not be liable to the Purchaser for any compensation or for any damages, costs, fees, expenses or losses whatsoever, or howsoever incurred, by virtue of the Purchaser being unable to obtain the Cable Services in the Unit/Building and/or the Housing Project.

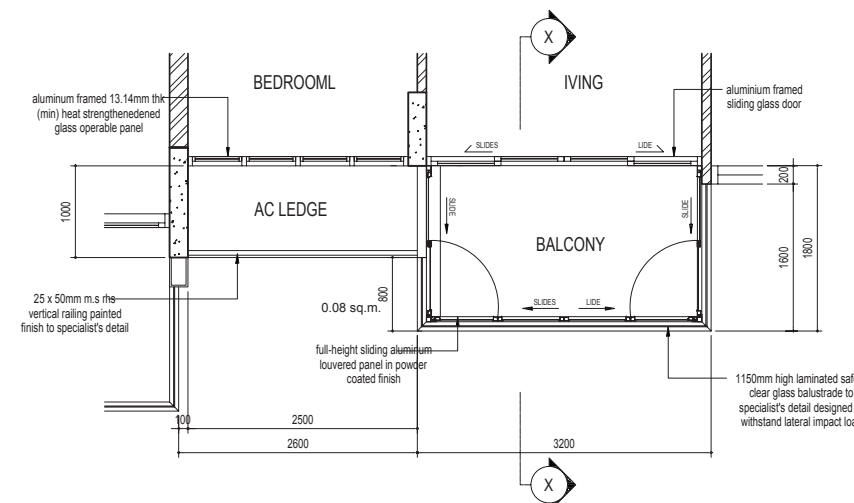
ANNEXURE I



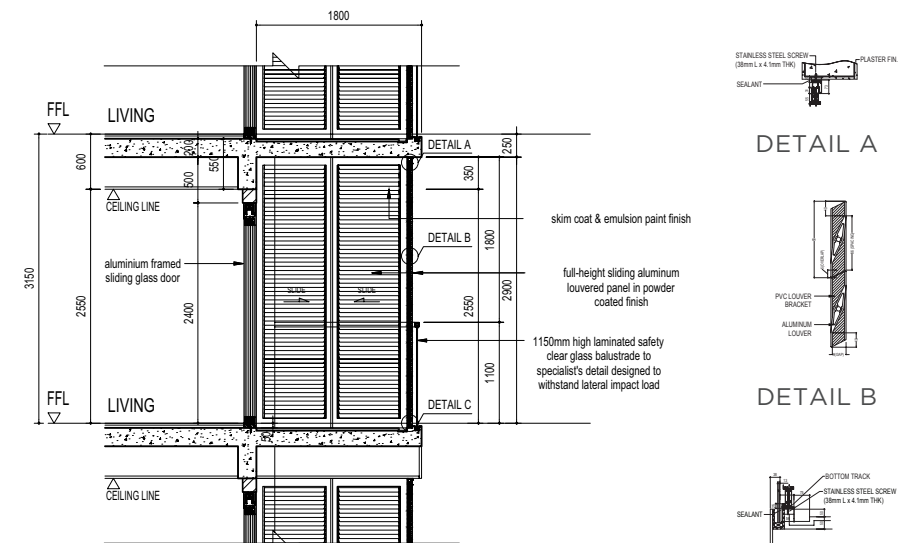
ELEVATION VIEW (SLIDING POSITION)



ELEVATION VIEW (OPEN POSITION)



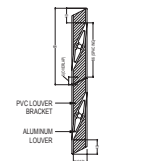
TYPICAL PART PLAN WITH SCREENING



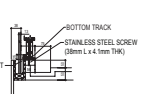
TYPICAL SECTIONAL ELEVATION X-X



DETAIL A



DETAIL B



DETAIL C

Note:

- The proposed balcony screens allow for natural ventilation within the balcony at all times (including the times when the screen is fully closed).
- The installation and cost of the screen shall be borne by the Purchaser. Actual profile of screen subjected to manufacturer's detail

CORPORATE PROFILE



CITY SUITES (SINGAPORE)



9 PENANG ROAD (SINGAPORE)



THE VALES (SINGAPORE)



5 THOMAS MELLON CIRCLE (USA)



VIETNAM TOWN (USA)



TRI-COUNTY MALL (USA)

SingHaiyi Group Ltd. is a fast-growing, diversified real estate company listed on the Mainboard of the Singapore Exchange (SGX), focused on property development, investment and management services. With strategic support from its major shareholders, it is led by a board and management team that has deep insights and strong connections that enable access to unique and rare investment opportunities.

Over the years, SingHaiyi has built a solid track record in property development in Singapore, with well-designed and quality residential properties such as The Vales and City Suites, both rated "CONQUAS STAR" by the Building and Construction Authority.

The Vales has won three awards at the recent 2018 PropertyGuru Asia Property Awards (Singapore), including the Best Executive Condo Development Award, Best Executive Condo Interior Design Award and Best Executive Condo Architectural Design Award. This is an endorsement of the design and quality of SingHaiyi's projects.

Apart from an established track record in residential and commercial property development in Singapore and the U.S., it holds a diversified portfolio of income-generative assets in the commercial and retail sectors, with geographical reach into the United States, Australia and a growing presence in Asia.

Backed by the philosophy of "精诚存信, 佳业传承", SingHaiyi is founded on business excellence and integrity, and endeavours to build a trustworthy and reliable brand for enduring growth and a legacy for generations.

AWARDS AND ACCOLADES

PropertyGuru ASIA PROPERTY AWARDS SINGAPORE 2018



THE VALES
by Anchorvale Residences Pte Ltd
BEST EXECUTIVE CONDO
LANDSCAPE
ARCHITECTURAL DESIGN
HIGHLY COMMENDED



THE VALES
by Anchorvale Residences Pte Ltd
BEST EXECUTIVE CONDO
ARCHITECTURAL DESIGN
WINNER



THE VALES
by Anchorvale Residences Pte Ltd
BEST EXECUTIVE CONDO
DEVELOPMENT
WINNER



THE VALES
by Anchorvale Residences Pte Ltd
BEST EXECUTIVE CONDO
INTERIOR DESIGN
WINNER



BCA CONSTRUCTION QUALITY ASSESSMENT SYSTEM
CONQUAS ★



BCA GREEN MARK AWARDS



CITY SUITES
CHINA CONSTRUCTION (SOUTH PACIFIC)
DEVELOPMENT CO PTE LTD
Main Contractor
CORPORATE RESIDENCE PTE LTD
Developer
Date of Issue: 22/06/2018



THE VALES
CHINA CONSTRUCTION (SOUTH PACIFIC)
DEVELOPMENT CO PTE LTD
Main Contractor
ANCHORVALE RESIDENCES PTE LTD
Developer
Date of Issue: 06/04/2018



9 PENANG ROAD
Platinum Award
2017



THE VALES
Gold Plus Award
2015

PROUDLY DEVELOPED BY



BUILDING FOR GENERATIONS
精诚存信 佳业传承

FOR SALES ENQUIRIES: 96 300 300 | www.thegazania.com.sg

Developer: Singhaiyi Huajiang Sun Pte Ltd • Company Registration Number : 201727442K • Developer's Licence No: C1293 • Tenure of Land: Estate in Fee Simple (Freehold)
• Expected Date of Vacant Possession: 31 July 2022 • Expected Date of Legal Completion: 31 July 2025 • Lot & Mukim No.: MK24-6165X • Encumbrances: Oversea-Chinese Banking Corporation Limited

While every reasonable care has been taken in preparing this brochure, the developer and its agent cannot be held responsible for any inaccuracies. All statements, specifications and plans are believed to be correct but are not regarded as statements or representations of fact. All information and specifications are current at the time of print and are subject to change as may be required and cannot form part of the contract. All floor plans are subject to any amendments approved or which may be approved by the relevant authorities. Renderings and illustrations are artist's impressions only and photographs are only decor suggestions and do not necessarily represent as-built standard specifications and none can be regarded as representations of fact. Floor areas are approximate measurements and are subject to final survey. The materials and finishing to be used are subject to changes and availability. The model and the showflat are subject to changes as may be required or approved by the relevant authorities.