



SENGKANG GRAND  
RESIDENCES



SENGKANG GRAND  
MALL



# SENGKANG GRAND RESIDENCES









# INFO AT A GLANCE



Project Name	SENGKANG GRAND RESIDENCES 盛港嘉园
Developer	CDL & Capitaland
Architect	MKPL Architects Pte Ltd
Landscape architect	Coen Design International Pte Ltd
Builder	China Construction Realty Co Pte Ltd
Type of Development	Mixed integrated Development
Tenure of Land	99 years from 13 Nov 2018
Site Area	37,254.9 sqm   401,012 sqft
Exp. Vacant Possession   CSC	Vacant possession will be 30 Nov 2023. TOP will be earlier
Number of Towers	9 - Blk 72, 74, 76, 78, 80, 82, 84, 86, 88
Number of Units	680 units (1+Study to 4+Study)
Residential Blk 78, 80, 82, 84 & 86	Starting from #04 - #13
Residential Blk 76	Starting from #04 - #12
Residential Blk 72, 74 & 88	Starting from #04 - #11
Condo Main facilities location	Level 4 - also called E-Deck
Number of lifts per tower	2 (one passenger & one Fire Lift)
2 Lifts from E-deck to Mall, MRT & Bus	Between Blk 74 & 76 and Btn Blk 84 & 88
Resi and Mall Vehicle Ingress & Egress	At Compassvale Bow
Residential Carpark Lots	549 including 4 accessible lots + 1 family lot
Residential Carpark Level	Level 3, 3A & 3B ( both Mezzanine)
Visitor carpark lots	None at residential carpark
Commercial Mall Carpark	205 (including 3 accessible lots + 1 family lot)
Project Account	DBS Bank Limited for Project Account No. 003-700137-6 of SIENA RESIDENTIAL DEVELOPMENT PTE. LTD. AND SIENA TRUSTEE PTE. LTD. (AS TRUSTEE-MANAGER OF SIENA COMMERCIAL TRUST)



# SENGKANG GRAND RESIDENCES



## SITE PLAN



BP Approval No: A1180-18012-BP01  
 BP Date: 16 AUGUST 2019  
 BP Approval No: A1180-18012-BP02  
 BP Date: 16 SEPTEMBER 2019



- **Recreation Club**
- **Adventure Club**
- **Fitness Club**
- **Sensory Club**
- **Wellness Club**
- **Main Clubhouse**
- **Social Clubhouse**
- **Others**

1. Circle Lounge
2. BBQ Pavilion
3. Aqua Pod
4. Social Pavilion
5. Poolside BBQ Pavilion
6. Dip Pool
7. Welcome Pavilion
8. Teepee Gardening
9. Gourmet Pavilion

10. Trampoline Thrill
11. Tower Tree Slide
12. Playhouse on Lawn
13. Kids' Play Pool
14. Mini Golf
15. Animal Sculpture Playground
16. Pets' Play

17. Reflexology Path
18. 3G Fitness
19. 50m Lap Pool
20. Yoga Lawn
21. Parkour Gym

22. Five Senses Garden
23. Cascading Water Feature
24. TreeTop Walk
25. Water Weir Wall
26. Misty Garden

27. Spectrum Spa Pool
28. Hammock Lawn
29. Aqua Hammock
30. Floating Tea Deck
31. Wellness Spa Pool
32. Swinging Day Bed
33. Bubble Leisure Pool

34. Gymnasium
35. Arrival Lobby
36. Changing Rooms
37. Nursing Room
38. Main Function Room

39. Social Function Room
40. Changing Room
41. Social Lounge

- A. Green Highline Access Gate
- B. Skylight of Sengkang Grand Mall
- C. Bin Centre (Level 1)
- D. Substation (Level 1)
- E. Genset (Level 3)
- F. Guardhouse (Level 3)

### Unit Legend

- 1-Bedroom + Study
- 2-Bedroom
- 2-Bedroom + Study
- 2-Bedroom Premium + Study
- 3-Bedroom
- 3-Bedroom Premium
- 3-Bedroom Premium + Flexi
- 4-Bedroom Premium + Flexi

- Water Tank (Roof Level)
- Carpark Ventilation (Level 3)

**SENGKANG GRAND RESIDENCES UNIT MIX**

Type	Unit Area (sqft)	No. of Units	Unit Mix %
1-Bedroom + Study	474 - 506	131	19.3%
2-Bedroom	624 - 678	95	14.0%
2-Bedroom + Study	624	10	1.5%
2-Bedroom Premium + Study	732 - 764	136	20.0%
3-Bedroom	936 - 947	148	21.8%
3-Bedroom Premium	1023 - 1055	56	8.2%
3-Bedroom Premium + Flexi	1012	55	8.1%
4-Bedroom Premium + Flexi	1313 - 1324	49	7.2%
		680	100%

# Schematic Diagram

BLK 72 COMPASSVALE BOW (544693)

UNIT FLOOR	01	02	03	04	05	06	07	08
11	B1	C1a	C1	B5PS	B5PS	C3P	C5PF	A1S
10	B1	C1a	C1	B5PS	B5PS	C3P	C5PF	A1S
9	B1	C1a	C1	B5PS	B5PS	C3P	C5PF	A1S
8	B1	C1a	C1	B5PS	B5PS	C3P	C5PF	A1S
7	B1	C1a	C1	B5PS	B5PS	C3P	C5PF	A1S
6	B1	C1a	C1	B5PS	B5PS	C3P	C5PF	A1S
5	B1(p)	C1a	C1	B5PS	B5PS	C3P	C5PF	A1S
4	B1(p)	C1a(p)	C1(p)	B5PS(p)	B5PS(p)	C3P(p)	C5PF(p)	A1S(p)

BLK 74 COMPASSVALE BOW (544567)

UNIT FLOOR	09	10	11	12	13	14	15	16
11	A1S	C2	C1	B5PS	B5PS	C3P	C2	A1S
10	A1S	C2	C1	B5PS	B5PS	C3P	C2	A1S
9	A1S	C2	C1	B5PS	B5PS	C3P	C2	A1S
8	A1S	C2	C1	B5PS	B5PS	C3P	C2	A1S
7	A1S	C2	C1	B5PS	B5PS	C3P	C2	A1S
6	A1S	C2	C1	B5PS	B5PS	C3P	C2	A1S
5	A1S	C2	C1	B5PS	B5PS	C3P	C2	A1S
4	A1S(p)	C2(p)	C1(p)	B5PS(p)	B5PS(p)	C3P(p)	C2(p)	A1S(p)

BLK 76 COMPASSVALE BOW (544568)

UNIT FLOOR	17	18	19	20	21	22	23	24
12	A1S	C5PF	D1PF	B5PS	B5PS	C1	C1a	B1
11	A1S	C5PF	D1PF	B5PS	B5PS	C1	C1a	B1
10	A1S	C5PF	D1PF	B5PS	B5PS	C1	C1a	B1
9	A1S	C5PF	D1PF	B5PS	B5PS	C1	C1a	B1
8	A1S	C5PF	D1PF	B5PS	B5PS	C1	C1a	B1
7	A1S	C5PF	D1PF	B5PS	B5PS	C1	C1a	B1
6	A1S	C5PF	D1PF	B5PS	B5PS	C1	C1a	B1
5	A1S	C5PF	D1PF	B5PS	B5PS	C1	C1a	B1
4	A1S(p)	C5PF(p)	D1PF(p)	B5PS(p)	B5PS(p)	C1(p)	C1a(p)	B1(p)

BLK 78 COMPASSVALE BOW (544569)

UNIT FLOOR	25	26	27	28	29	30	31	32
13	B6PS	B3	C3Pa	C2	B2	B2	C2	D2PF
12	B6PS	B3	C3Pa	C2	B2	B2	C2	D2PF
11	B6PS	B3	C3Pa	C2	B2	B2	C2	D2PF
10	B6PS	B3	C3Pa	C2	B2	B2	C2	D2PF
9	B6PS	B3	C3Pa	C2	B2	B2	C2	D2PF
8	B6PS	B3	C3Pa	C2	B2	B2	C2	D2PF
7	B6PS	B3	C3Pa	C2	B2	B2	C2	D2PF
6	B6PS	B3	C3Pa	C2	B2	B2	C2	D2PF
5	B6PS	B3	C3Pa	C2	B2	B2	C2	D2PF
4	B6PS(p)	B3(p)	C3Pa(p)	C2(p)	B2(p)	B2(p)	C2(p)	D2PF(p)

BLK 80 COMPASSVALE BOW (544570)

UNIT FLOOR	33	34	35	36	37	38	39	40
13	B4S	A4S	B2	D2PF	C3Pa	B3	A3S	A1S
12	B4S	A4S	B2	D2PF	C3Pa	B3	A3S	A1S
11	B4S	A4S	B2	D2PF	C3Pa	B3	A3S	A1S
10	B4S	A4S	B2	D2PF	C3Pa	B3	A3S	A1S
9	B4S	A4S	B2	D2PF	C3Pa	B3	A3S	A1S
8	B4S	A4S	B2	D2PF	C3Pa	B3	A3S	A1S
7	B4S	A4S	B2	D2PF	C3Pa	B3	A3S	A1S
6	B4S	A4S	B2	D2PF	C3Pa	B3	A3S	A1S
5	B4S	A4S	B2	D2PF	C3Pa	B3	A3S	A1S
4	B4S(p)	A4S(p)	B2(p)	D2PF(p)	C3Pa(p)	B3(p)	A3S(p)	A1S(p)

BLK 82 COMPASSVALE BOW (544571)

UNIT FLOOR	41	42	43	44	45	46	47	48
13	B1	C1a	C1	B5PS	B5PS	D1PF	C5PF	A1S
12	B1	C1a	C1	B5PS	B5PS	D1PF	C5PF	A1S
11	B1	C1a	C1	B5PS	B5PS	D1PF	C5PF	A1S
10	B1	C1a	C1	B5PS	B5PS	D1PF	C5PF	A1S
9	B1	C1a	C1	B5PS	B5PS	D1PF	C5PF	A1S
8	B1	C1a	C1	B5PS	B5PS	D1PF	C5PF	A1S
7	B1	C1a	C1	B5PS	B5PS	D1PF	C5PF	A1S
6	B1	C1a	C1	B5PS	B5PS	D1PF	C5PF	A1S
5	B1	C1a	C1	B5PS	B5PS	D1PF	C5PF	A1S
4	B1(p)	C1a(p)	C1(p)	B5PS(p)	B5PS(p)	D1PF(p)	C5PF(p)	A1S(p)

BLK 84 COMPASSVALE BOW (544572)

UNIT FLOOR	49	50	51	52	53	54	55	56
13	B1	C1a	C1	B5PS	B5PS	C3P	C5PF	A1S
12	B1	C1a	C1	B5PS	B5PS	C3P	C5PF	A1S
11	B1	C1a	C1	B5PS	B5PS	C3P	C5PF	A1S
10	B1	C1a	C1	B5PS	B5PS	C3P	C5PF	A1S
9	B1	C1a	C1	B5PS	B5PS	C3P	C5PF	A1S
8	B1	C1a	C1	B5PS	B5PS	C3P	C5PF	A1S
7	B1	C1a	C1	B5PS	B5PS	C3P	C5PF	A1S
6	B1	C1a	C1	B5PS	B5PS	C3P	C5PF	A1S
5	B1	C1a	C1	B5PS	B5PS	C3P	C5PF	A1S
4	B1(p)	C1a(p)	C1(p)	B5PS(p)	B5PS(p)	C3P(p)	C5PF(p)	A1S(p)

BLK 86 COMPASSVALE BOW (544573)

UNIT FLOOR	58	59	60	61	62	63	64	65	66	67
13	A1S	C5PF	D1PF	B5PS	B5PS	A2S	C4P	C2a	A3S	A1S
12	A1S	C5PF	D1PF	B5PS	B5PS	A2S	C4P	C2a	A3S	A1S
11	A1S	C5PF	D1PF	B5PS	B5PS	A2S	C4P	C2a	A3S	A1S
10	A1S	C5PF	D1PF	B5PS	B5PS	A2S	C4P	C2a	A3S	A1S
9	A1S	C5PF	D1PF	B5PS	B5PS	A2S	C4P	C2a	A3S	A1S
8	A1S	C5PF	D1PF	B5PS	B5PS	A2S	C4P	C2a	A3S	A1S
7	A1S	C5PF	D1PF	B5PS	B5PS	A2S	C4P	C2a	A3S	A1S
6	A1S	C5PF	D1PF	B5PS	B5PS	A2S	C4P	C2a	A3S	A1S
5	A1S	C5PF	D1PF	B5PS	B5PS	A2S	C4P	C2a	A3S	A1S
4	A1S(p)	C5PF(p)	D1PF(p)	B5PS(p)	B5PS(p)	A2S(p)	C4P(p)	C2a	A3S(p)	A1S(p)

BLK 88 COMPASSVALE BOW (544574)

UNIT FLOOR	68	69	70	71	72	73	74	75
11	B1	C1a	C1	B5PS	B5PS	C1	C5PF	A1S
10	B1	C1a	C1	B5PS	B5PS	C1	C5PF	A1S
9	B1	C1a	C1	B5PS	B5PS	C1	C5PF	A1S
8	B1	C1a	C1	B5PS	B5PS	C1	C5PF	A1S
7	B1	C1a	C1	B5PS	B5PS	C1	C5PF	A1S
6	B1	C1a	C1	B5PS	B5PS	C1	C5PF	A1S
5	B1	C1a	C1	B5PS	B5PS	C1	C5PF	A1S
4	B1(p)	C1a(p)	C1(p)	B5PS(p)	B5PS(p)	C1(p)	C5PF(p)	A1S(p)

**LEGEND**

1-BEDROOM + STUDY

2-BEDROOM

2-BEDROOM + STUDY

2-BEDROOM PREMIUM + STUDY

3-BEDROOM

3-BEDROOM PREMIUM

3-BEDROOM PREMIUM + FLEXI

4-BEDROOM PREMIUM + FLEXI



# 1-BEDROOM + STUDY

## Type A1S(p)

44 sq m / 474 sq ft

BLK 72 #04-08\*

BLK 74 #04-09 / #04-16\*

BLK 76 #04-17

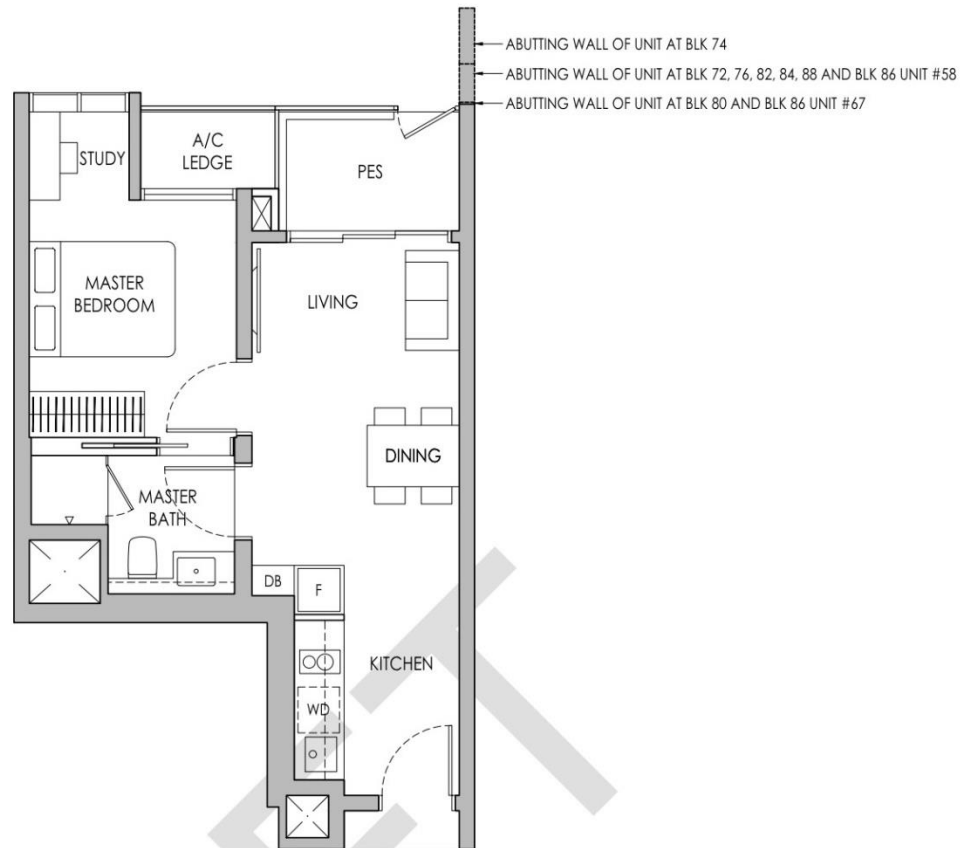
BLK 80 #04-40\*

BLK 82 #04-48\*

BLK 84 #04-56\*

BLK 86 #04-58 / #04-67\*

BLK 88 #04-75\*

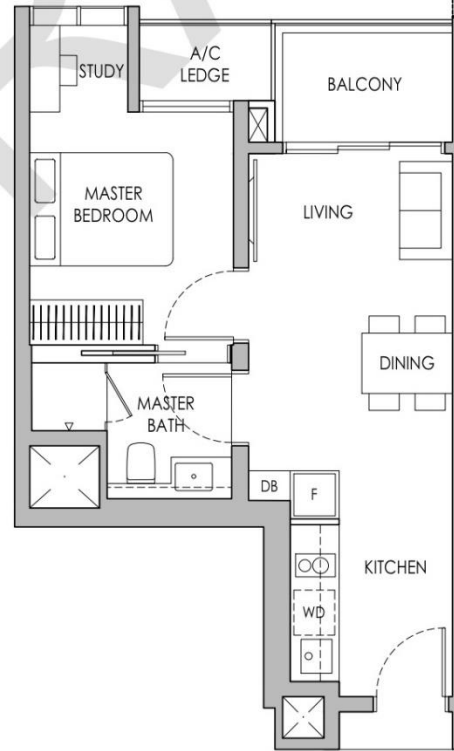


# Type A1S

44 sq m / 474 sq ft

- BLK 72 #05-08\* - # 11-08\*
- BLK 74 #05-09 - #11-09 / #05-16\* - #11-16\*
- BLK 76 #05-17 - #12-17
- BLK 80 #05-40\* - #13-40\*
- BLK 82 #05-48\* - #13-48\*
- BLK 84 #05-56\* - #13-56\*
- BLK 86 #05-58 - #13-58 / #05-67\* - #13-67\*
- BLK 88 #05-75\* - #11-75\*

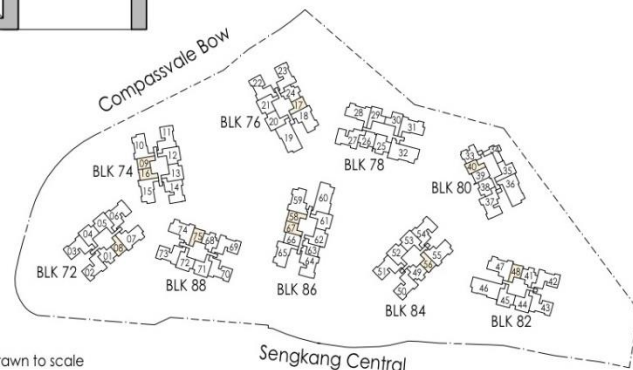
- RC LEDGE AT ROOF LEVEL OF BLK 86
- RC LEDGE AT ROOF LEVEL OF BLK 84
- RC LEDGE AT ROOF LEVEL OF BLK 82
- RC LEDGE AT ROOF LEVEL OF BLK 72, 76, 88
- RC LEDGE AT ROOF LEVEL OF BLK 74
- RC LEDGE AT ROOF LEVEL OF BLK 80
- ABUTTING WALL OF UNIT AT BLK 74
- ABUTTING WALL OF UNIT AT BLK 72, 76, 82, 84, 88 AND BLK 86 UNIT #58
- ABUTTING WALL OF UNIT AT BLK 80 AND BLK 86 UNIT #67



\* Mirror Image



Area includes air-con (A/C) ledge, private enclosed space (PES), balcony and strata void area where applicable. Some units are mirror images of the apartment plans shown in the brochure. Please refer to the keyplan for orientation. The plans are subject to change as may be approved by relevant authorities. All floor plans are approximate measurements only and are subject to government re-survey. The balcony shall not be enclosed unless with the approved balcony screen. For an illustration of the approved balcony screen, please refer to the diagram annexed hereto as "Annexure A".



Keyplan is not drawn to scale

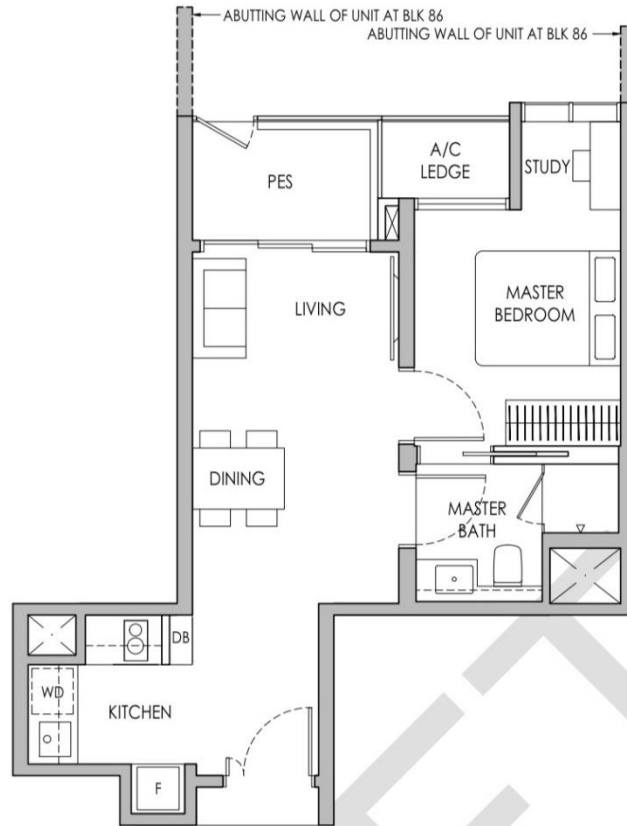
Sengkang Central

# 1-BEDROOM + STUDY

Type A2S(p)

46 sq m / 495 sq ft

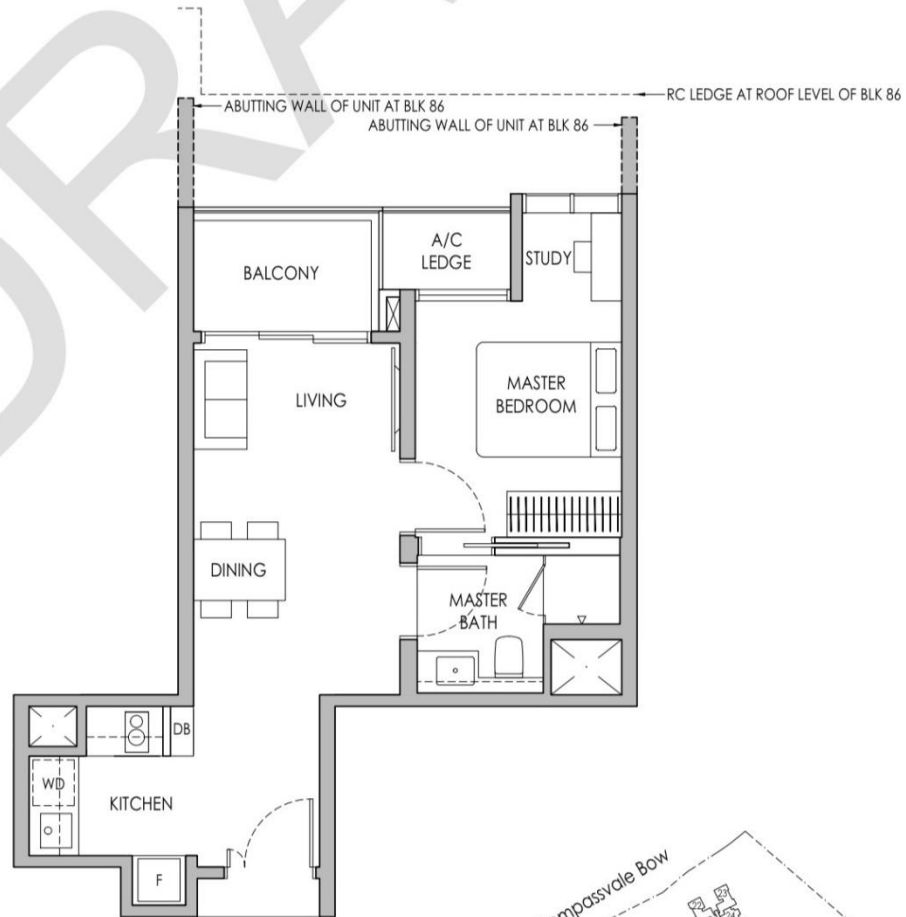
BLK 86: #04-63



# Type A2S

46 sq m / 495 sq ft

BLK 86: #05-63 - #13-63



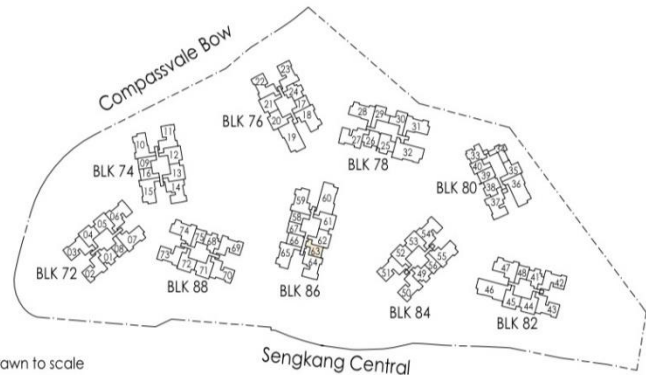
\* Mirror Image



Area includes air-con (A/C) ledge, private enclosed space (PES), balcony and strata void area where applicable. Some units are mirror images of the apartment plans shown in the brochure. Please refer to the keyplan for orientation. The plans are subject to change as may be approved by relevant authorities. All floor plans are approximate measurements only and are subject to government re-survey. The balcony shall not be enclosed unless with the approved balcony screen. For an illustration of the approved balcony screen, please refer to the diagram annexed hereto as "Annexure A".



Keyplan is not drawn to scale



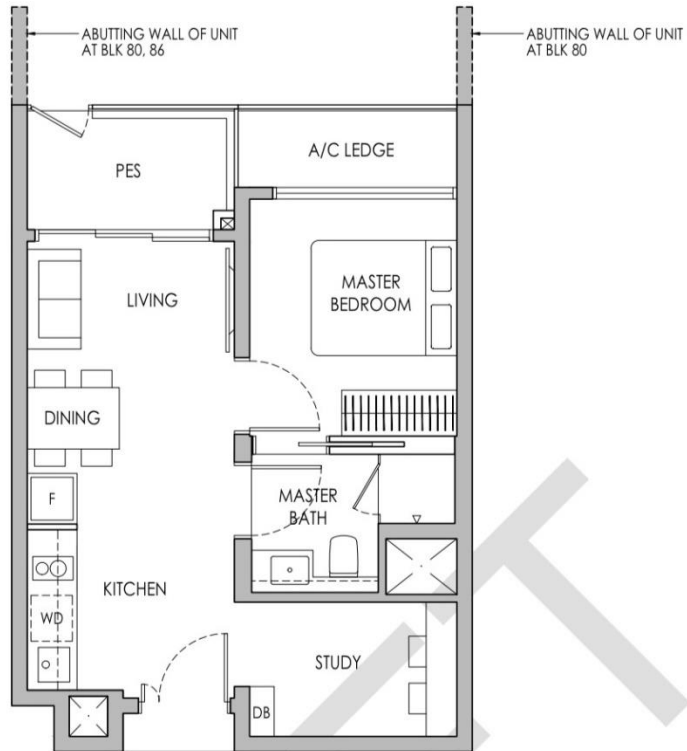
# 1-BEDROOM + STUDY

## Type A3S(p)

47 sq m / 506 sq ft

BLK 80 #04-39

BLK 86 #04-66\*

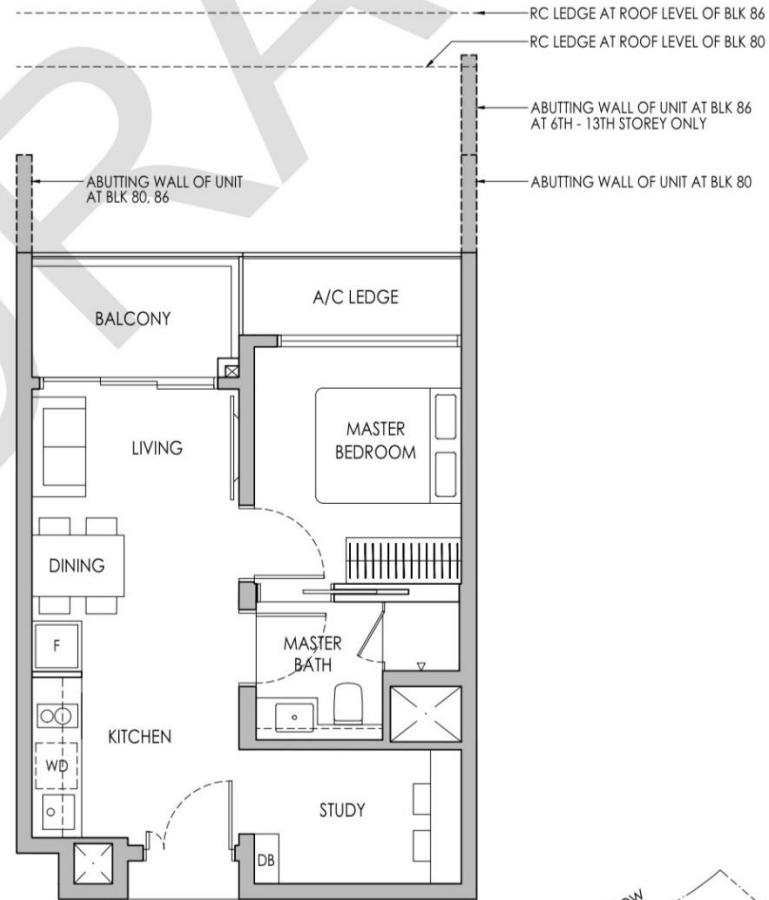


# Type A3S

47 sq m / 506 sq ft

BLK 80 #05-39 - #13-39

BLK 86 #05-66\* - #13-66\*



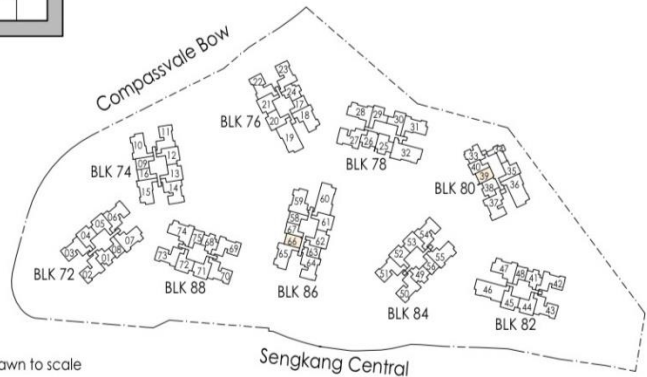
\* Mirror Image



Area includes air-con (A/C) ledge, private enclosed space (PES), balcony and strata void area where applicable. Some units are mirror images of the apartment plans shown in the brochure. Please refer to the keyplan for orientation. The plans are subject to change as may be approved by relevant authorities. All floor plans are approximate measurements only and are subject to government re-survey. The balcony shall not be enclosed unless with the approved balcony screen. For an illustration of the approved balcony screen, please refer to the diagram annexed hereto as "Annexure A".



Keyplan is not drawn to scale

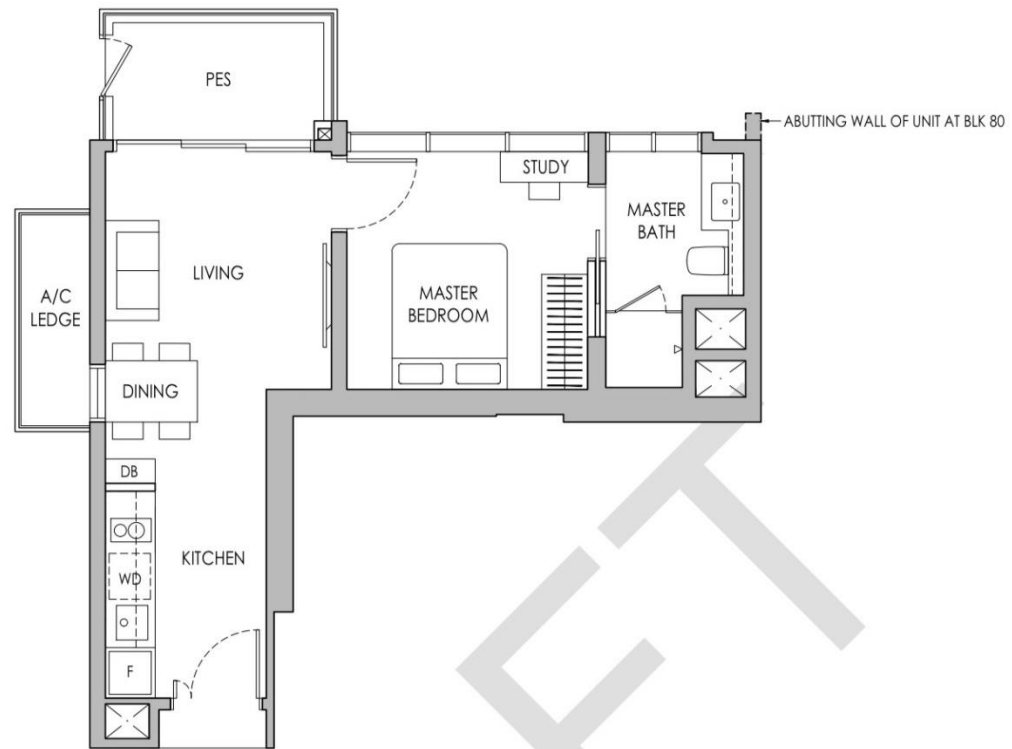


# 1-BEDROOM + STUDY

Type A4S(p)

47 sq m / 506 sq ft

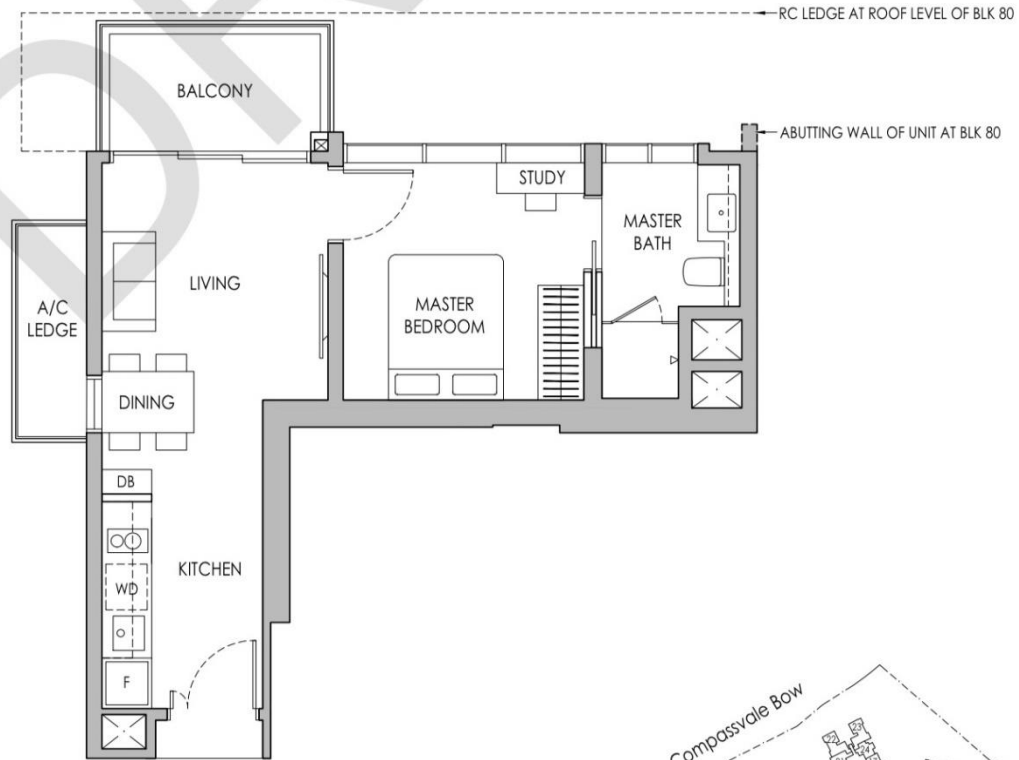
BLK 80 #04-34



# Type A4S

47 sq m / 506 sq ft

BLK 80 #05-34 - #13-34



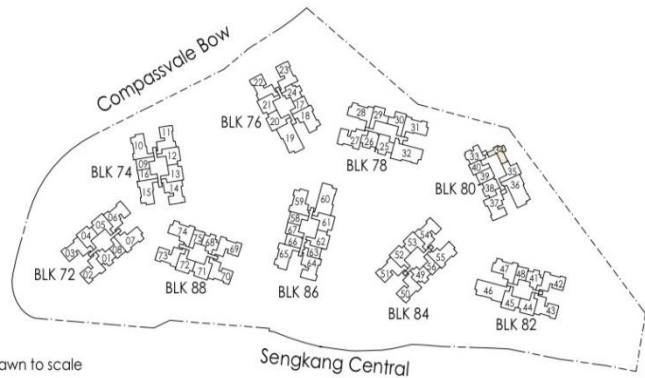
\* Mirror Image



Area includes air-con (A/C) ledge, private enclosed space (PES), balcony and strata void area where applicable. Some units are mirror images of the apartment plans shown in the brochure. Please refer to the keyplan for orientation. The plans are subject to change as may be approved by relevant authorities. All floor plans are approximate measurements only and are subject to government re-survey. The balcony shall not be enclosed unless with the approved balcony screen. For an illustration of the approved balcony screen, please refer to the diagram annexed hereto as "Annexure A".



Keyplan is not drawn to scale



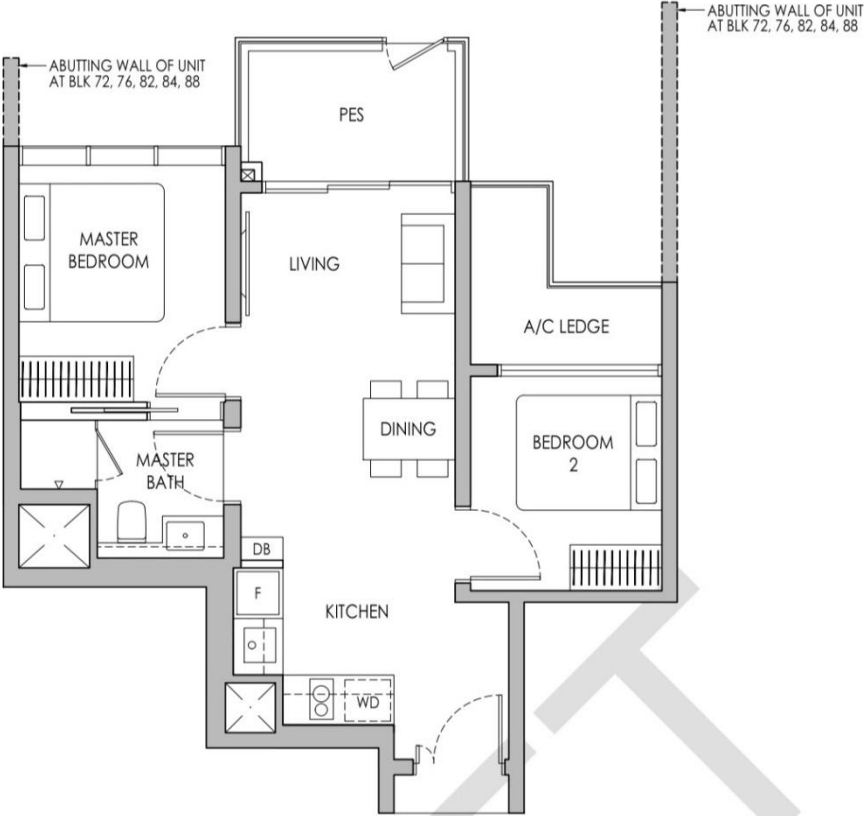


# 2-BEDROOM

## Type B1(p)

58 sq m / 624 sq ft

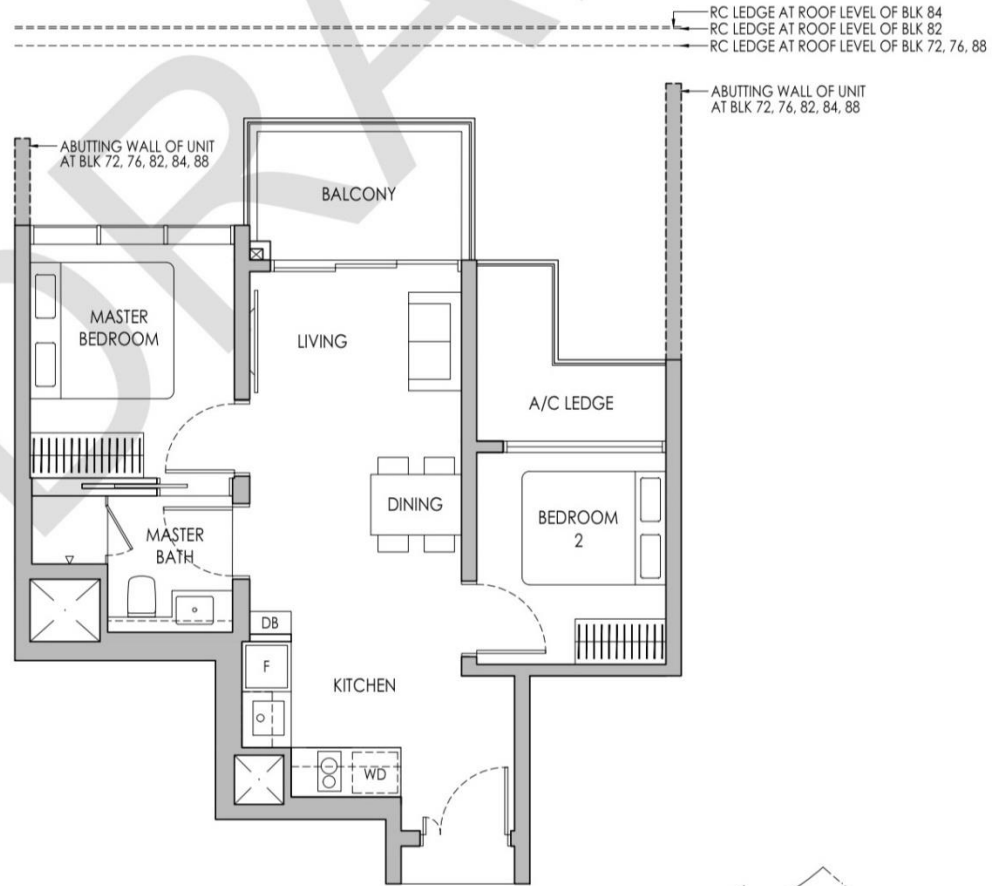
- BLK 72 #04-01
- BLK 76 #04-24\*
- BLK 82 #04-41
- BLK 84 #04-49
- BLK 88 #04-68



# Type B1

58 sq m / 624 sq ft

- BLK 72 #05-01 - #11-01
- BLK 76 #05-24\* - #12-24\*
- BLK 82 #05-41 - #13-41
- BLK 84 #05-49 - #13-49
- BLK 88 #05-68 - #11-68



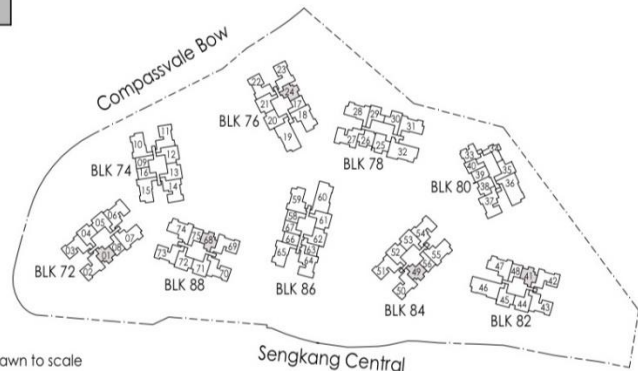
\* Mirror Image



Area includes air-con (A/C) ledge, private enclosed space (PES), balcony and strata void area where applicable. Some units are mirror images of the apartment plans shown in the brochure. Please refer to the keyplan for orientation. The plans are subject to change as may be approved by relevant authorities. All floor plans are approximate measurements only and are subject to government re-survey. The balcony shall not be enclosed unless with the approved balcony screen. For an illustration of the approved balcony screen, please refer to the diagram annexed hereto as "Annexure A".



Keyplan is not drawn to scale



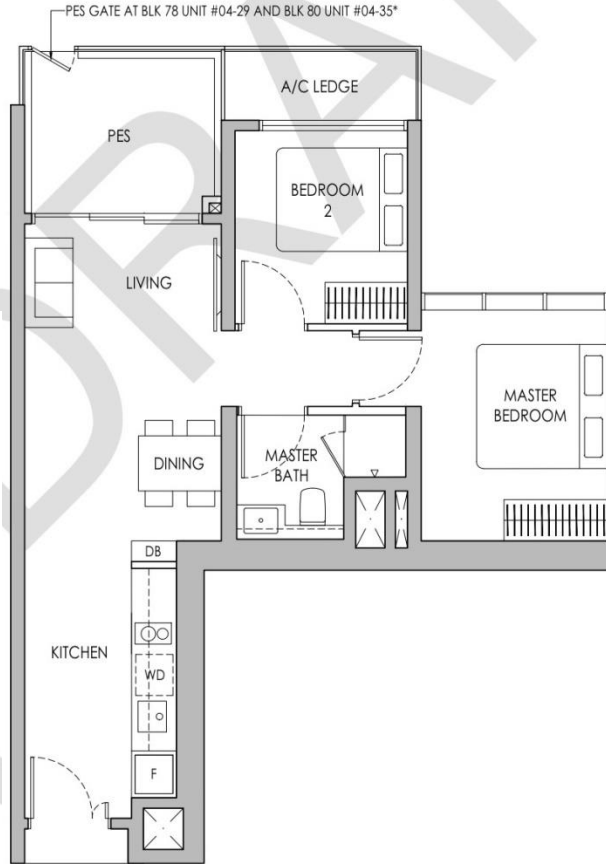
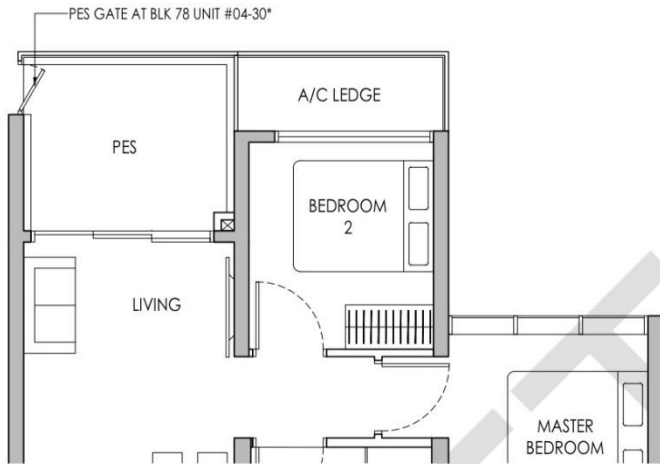
# 2-BEDROOM

## Type B2(p)

63 sq m / 678 sq ft

BLK 78 #04-29 / #04-30\*

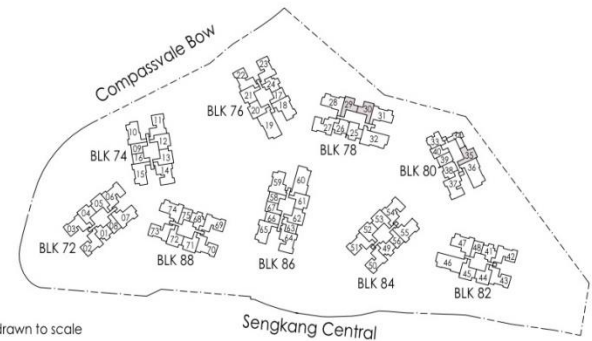
BLK 80 #04-35\*



\* Mirror Image



Area includes air-con (A/C) ledge, private enclosed space (PES), balcony and strata void area where applicable. Some units are mirror images of the apartment plans shown in the brochure. Please refer to the keyplan for orientation. The plans are subject to change as may be approved by relevant authorities. All floor plans are approximate measurements only and are subject to government re-survey. The balcony shall not be enclosed unless with the approved balcony screen. For an illustration of the approved balcony screen, please refer to the diagram annexed hereto as "Annexure A".



Keyplan is not drawn to scale

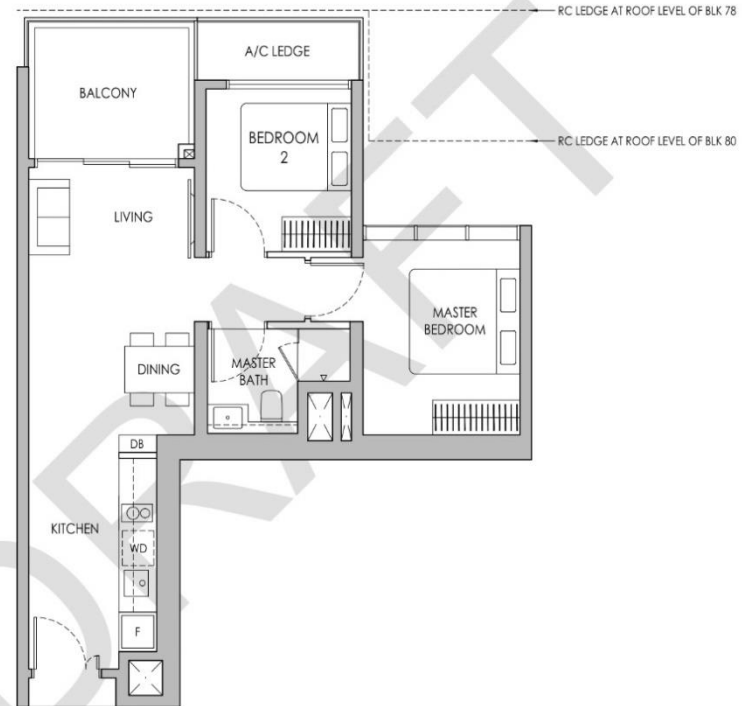
# 2-BEDROOM

## Type B2

63 sq m / 678 sq ft

BLK 78 #05-29 - #13-29, #05-30\* - #13-30\*

BLK 80 #05-35\* - #13-35\*



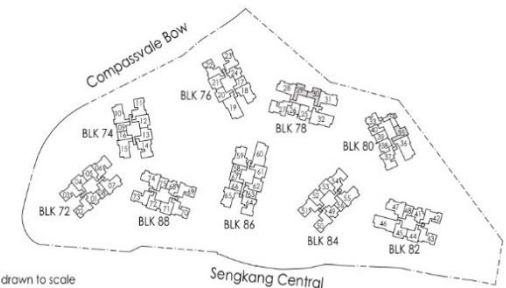
\* Mirror Image



Area includes air-con (A/C) ledge, private enclosed space (PES), balcony and stoep void area where applicable. Some units are mirror images of the apartment plans shown in the brochure. Please refer to the keyplan for orientation. The plans are subject to change as may be approved by relevant authorities. All floor plans are approximate measurements only and are subject to government re-survey. The balcony shall not be enclosed unless with the approved balcony screen. For an illustration of the approved balcony screen, please refer to the diagram annexed hereto as 'Annexure A'.



Keyplan is not drawn to scale



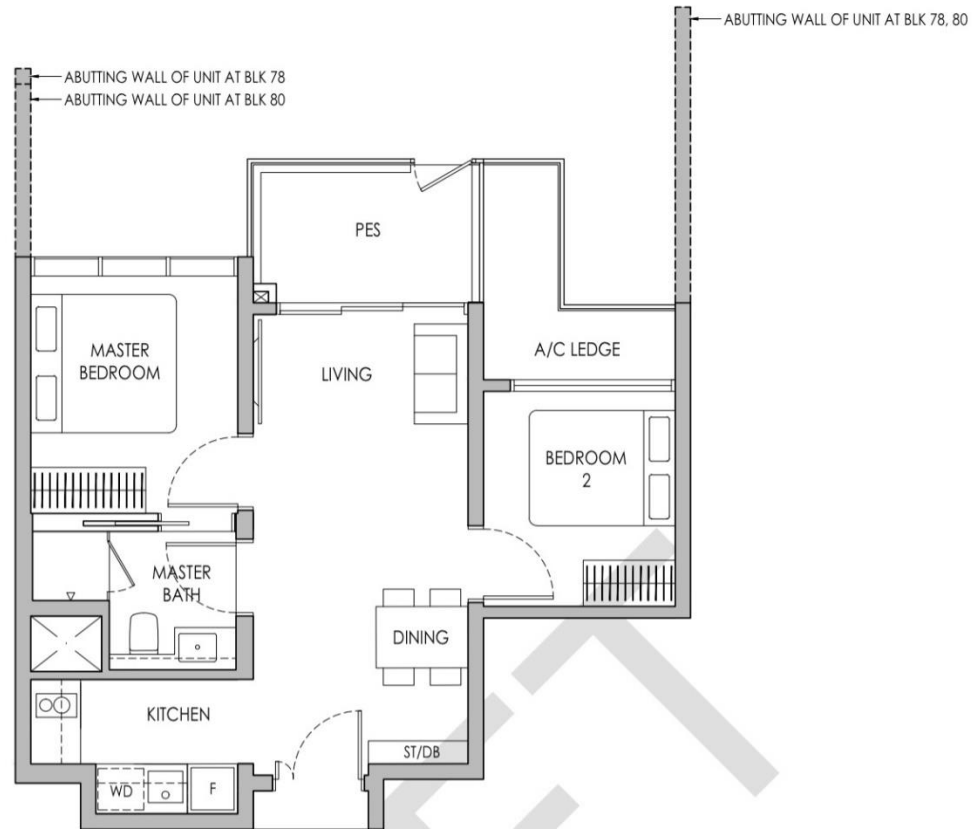
# 2-BEDROOM

## Type B3(p)

58 sq m / 624 sq ft

BLK 78 #04-26

BLK 80 #04-38\*

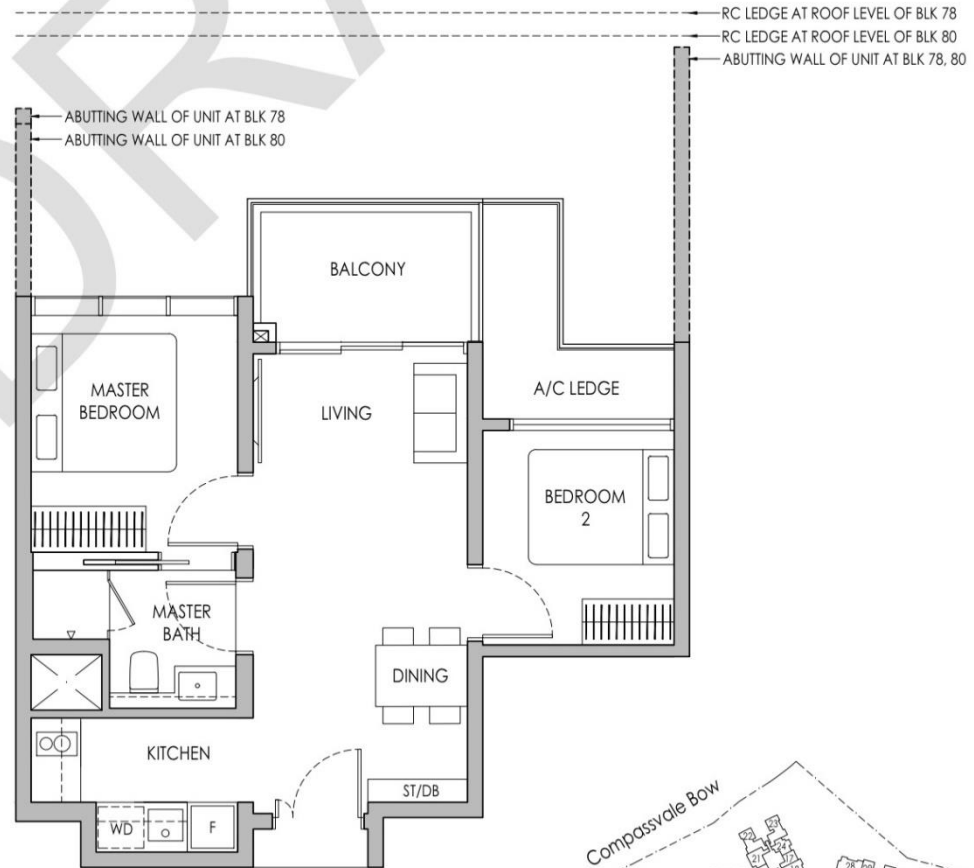


# Type B3

58 sq m / 624 sq ft

BLK 78 #05-26 - #13-26

BLK 80 #05-38\* - #13-38\*



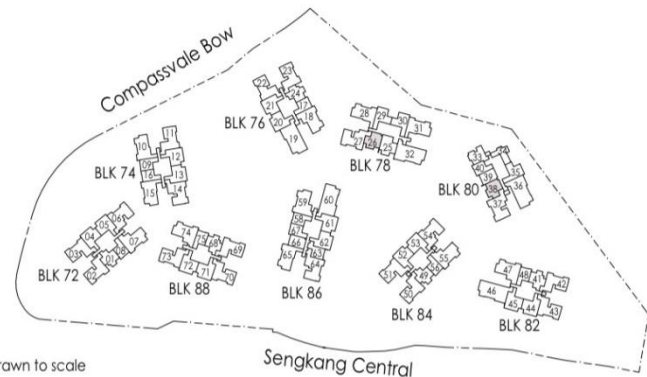
\* Mirror Image



Area includes air-con (A/C) ledge, private enclosed space (PES), balcony and strata void area where applicable. Some units are mirror images of the apartment plans shown in the brochure. Please refer to the keyplan for orientation. The plans are subject to change as may be approved by relevant authorities. All floor plans are approximate measurements only and are subject to government re-survey. The balcony shall not be enclosed unless with the approved balcony screen. For an illustration of the approved balcony screen, please refer to the diagram annexed hereto as "Annexure A".



Keyplan is not drawn to scale

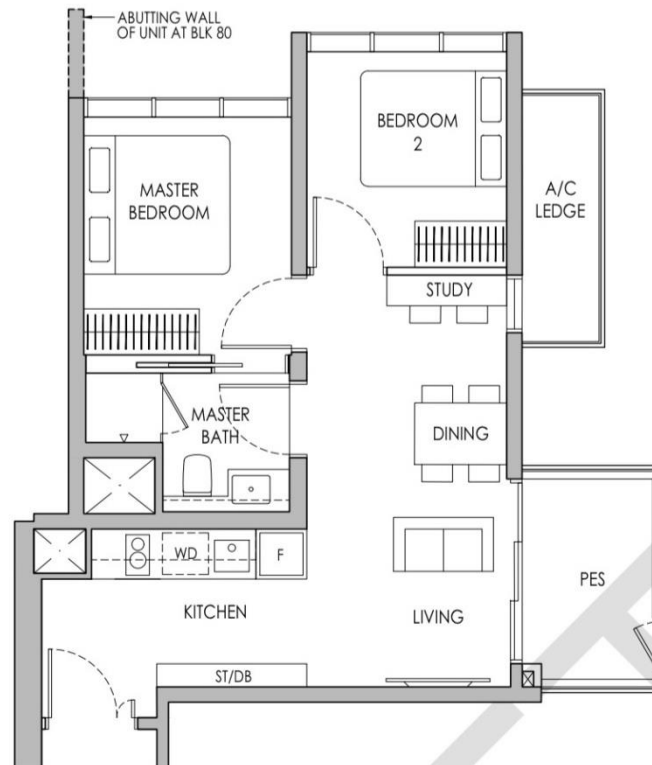


## 2-BEDROOM + STUDY

Type B4S(p)

58 sq m / 624 sq ft

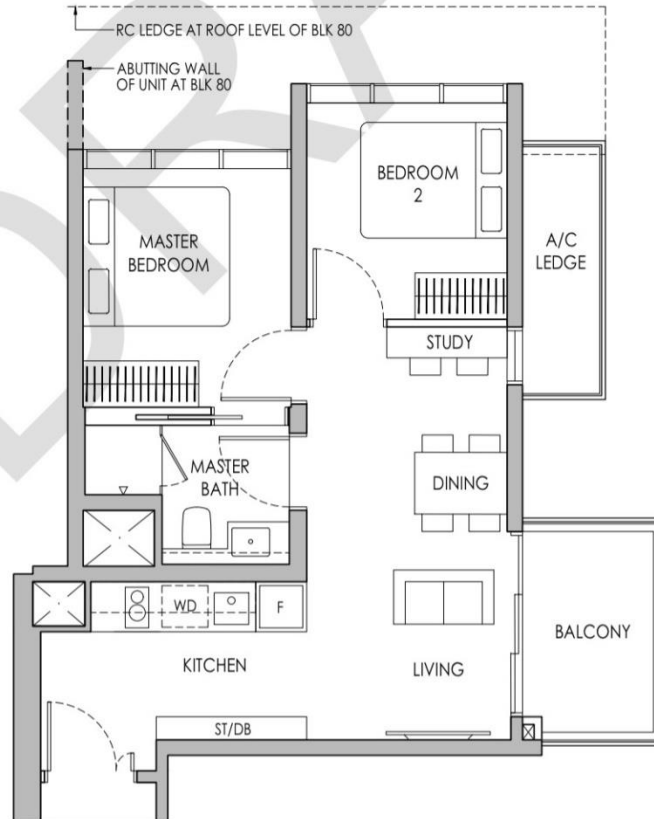
BLK 80 #04-33



# Type B4S

58 sq m / 624 sq ft

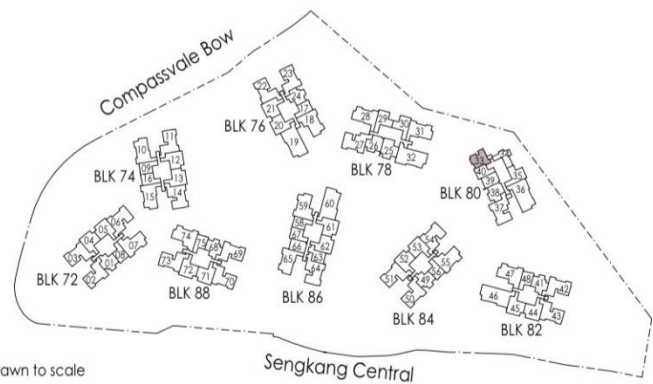
BLK 80 #05-33 - #13-33



\* Mirror Image



Area includes air-con (A/C) ledge, private enclosed space (PES), balcony and strata void area where applicable. Some units are mirror images of the apartment plans shown in the brochure. Please refer to the keyplan for orientation. The plans are subject to change as may be approved by relevant authorities. All floor plans are approximate measurements only and are subject to government re-survey. The balcony shall not be enclosed unless with the approved balcony screen. For an illustration of the approved balcony screen, please refer to the diagram annexed hereto as "Annexure A".



Keyplan is not drawn to scale



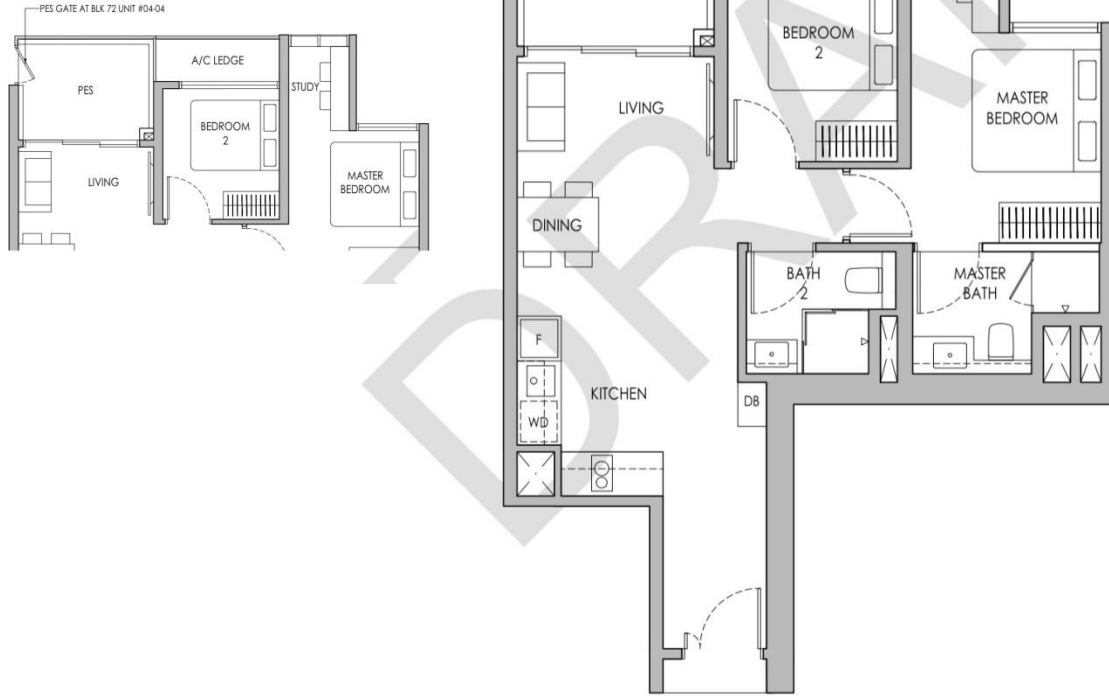
# 2-BEDROOM PREMIUM + STUDY

Type B5PS(p)

71 sq m / 764 sq ft

- BLK 72 #04-04, #04-05\*
- BLK 74 #04-12, #04-13\*
- BLK 76 #04-20, #04-21\*
- BLK 82 #04-44, #04-45\*
- BLK 84 #04-52, #04-53\*
- BLK 86 #04-61, #04-62\*
- BLK 88 #04-71, #04-72\*

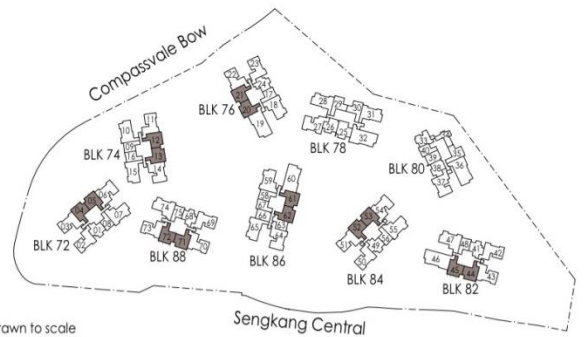
PES GATE AT BLK 72 UNIT #04-05\*, BLK 74 #04-12 / #04-13\*,  
 BLK 76 #04-20 / #04-21\*, BLK 82 #04-44 / #04-45\*,  
 BLK 84 #04-52 / #04-53\*, BLK 86 #04-61 / #04-62\*,  
 BLK 88 #04-71 / #04-72\*



\* Mirror Image



Area includes air-con (A/C) ledge, private enclosed space (PES), balcony and strata void area where applicable. Some units are mirror images of the apartment plans shown in the brochure. Please refer to the keyplan for orientation. The plans are subject to change as may be approved by relevant authorities. All floor plans are approximate measurements only and are subject to government re-survey. The balcony shall not be enclosed unless with the approved balcony screen. For an illustration of the approved balcony screen, please refer to the diagram annexed hereto as "Annexure A".



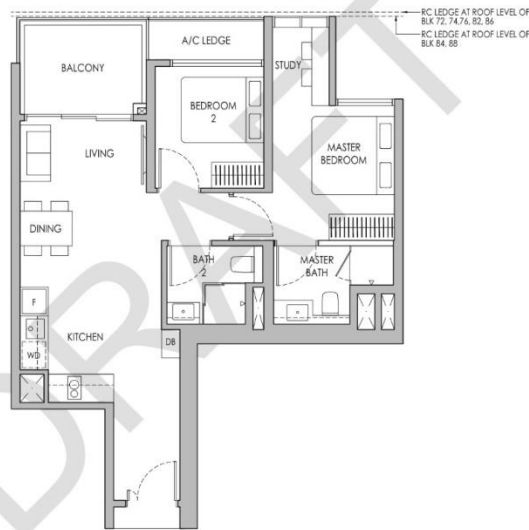
Keyplan is not drawn to scale

# 2-BEDROOM PREMIUM + STUDY

## Type B5PS

71 sq m / 764 sq ft

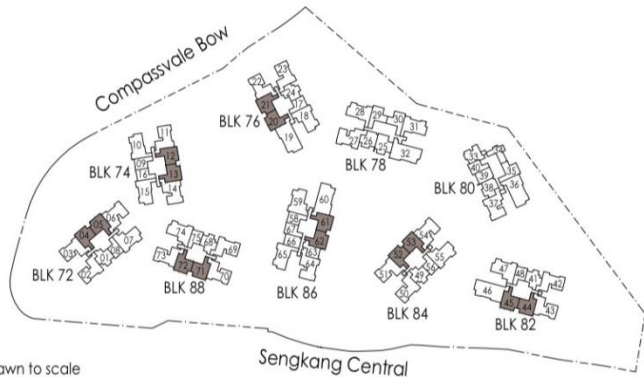
- BLK 72 #05-04 - #11-04, #05-05\* - #11-05\*
- BLK 74 #05-12 - #11-12, #05-13\* - #11-13\*
- BLK 76 #05-20 - #12-20, #05-21\* - #12-21\*
- BLK 82 #05-44 - #13-44, #05-45\* - #13-45\*
- BLK 84 #05-52 - #13-52, #05-53\* - #13-53\*
- BLK 86 #05-61 - #13-61, #05-62\* - #13-62\*
- BLK 88 #05-71 - #11-71, #05-72\* - #11-72\*



\* Mirror Image



Area includes air-con (A/C) ledge, private enclosed space (PES), balcony and strata void area where applicable. Some units are mirror images of the apartment plans shown in the brochure. Please refer to the keyplan for orientation. The plans are subject to change as may be approved by relevant authorities. All floor plans are approximate measurements only and are subject to government re-survey. The balcony shall not be enclosed unless with the approved balcony screen. For an illustration of the approved balcony screen, please refer to the diagram annexed hereto as "Annexure A".



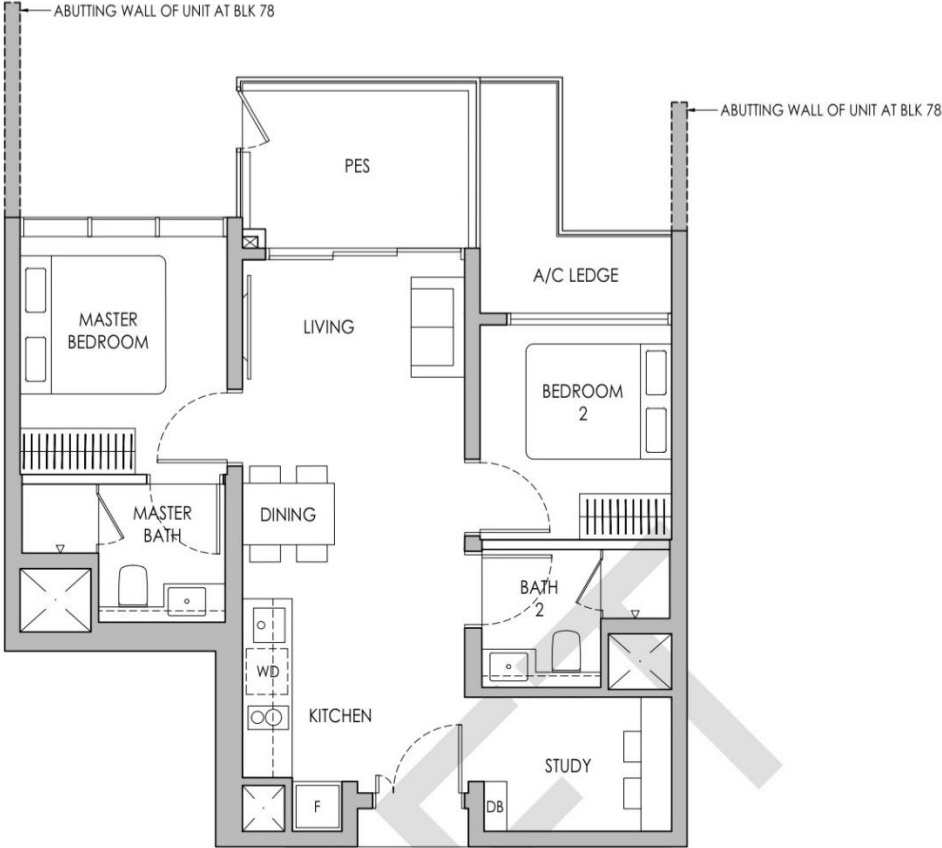
Keyplan is not drawn to scale

# 2-BEDROOM PREMIUM + STUDY

Type B6PS(p)

68 sq m / 732 sq ft

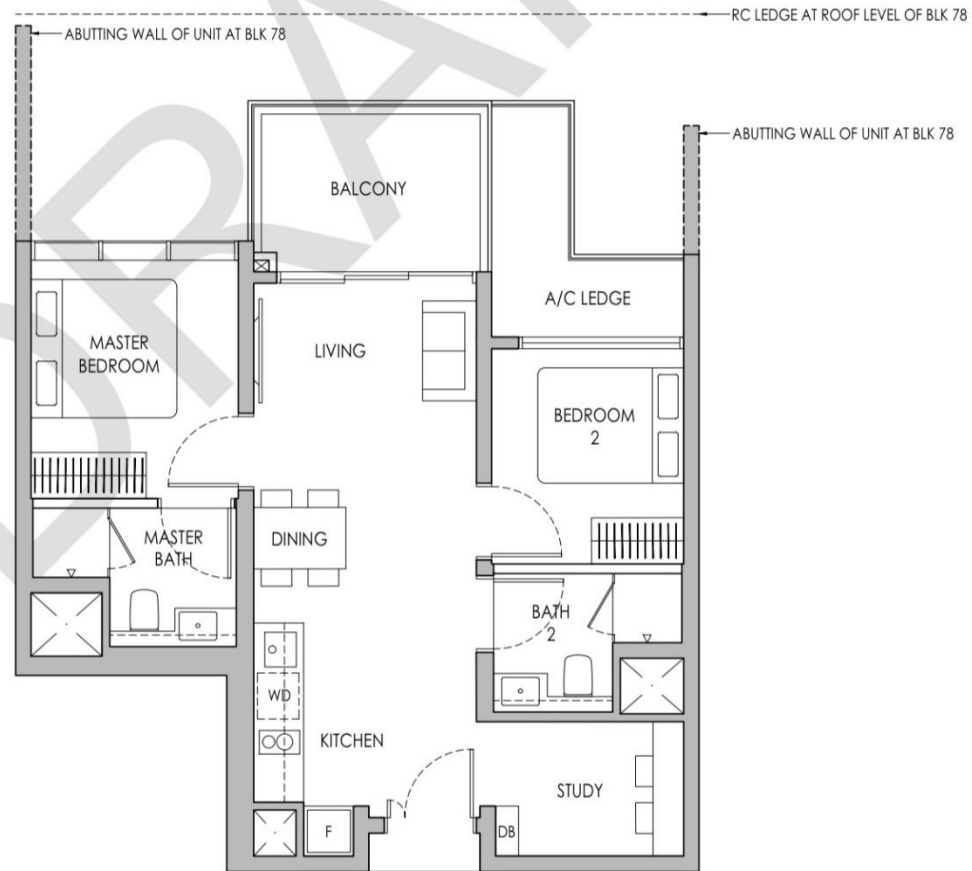
BLK 78 #04-25



# Type B6PS

68 sq m / 732 sq ft

BLK 78 #05-25 - #13-25



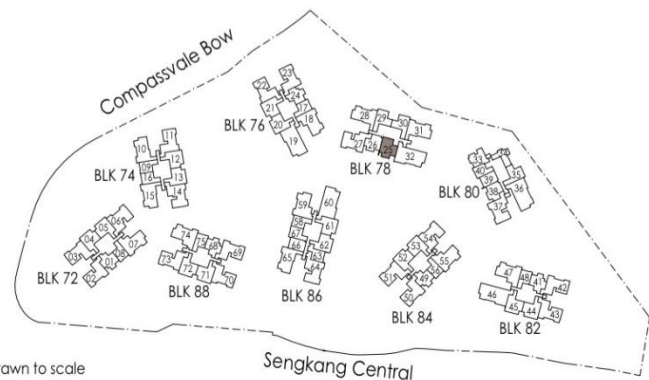
\* Mirror Image



Area includes air-con (A/C) ledge, private enclosed space (PES), balcony and strata void area where applicable. Some units are mirror images of the apartment plans shown in the brochure. Please refer to the keyplan for orientation. The plans are subject to change as may be approved by relevant authorities. All floor plans are approximate measurements only and are subject to government re-survey. The balcony shall not be enclosed unless with the approved balcony screen. For an illustration of the approved balcony screen, please refer to the diagram annexed hereto as "Annexure A".



Keyplan is not drawn to scale



# 3-BEDROOM

## Type C1(p)

87 sq m / 936 sq ft

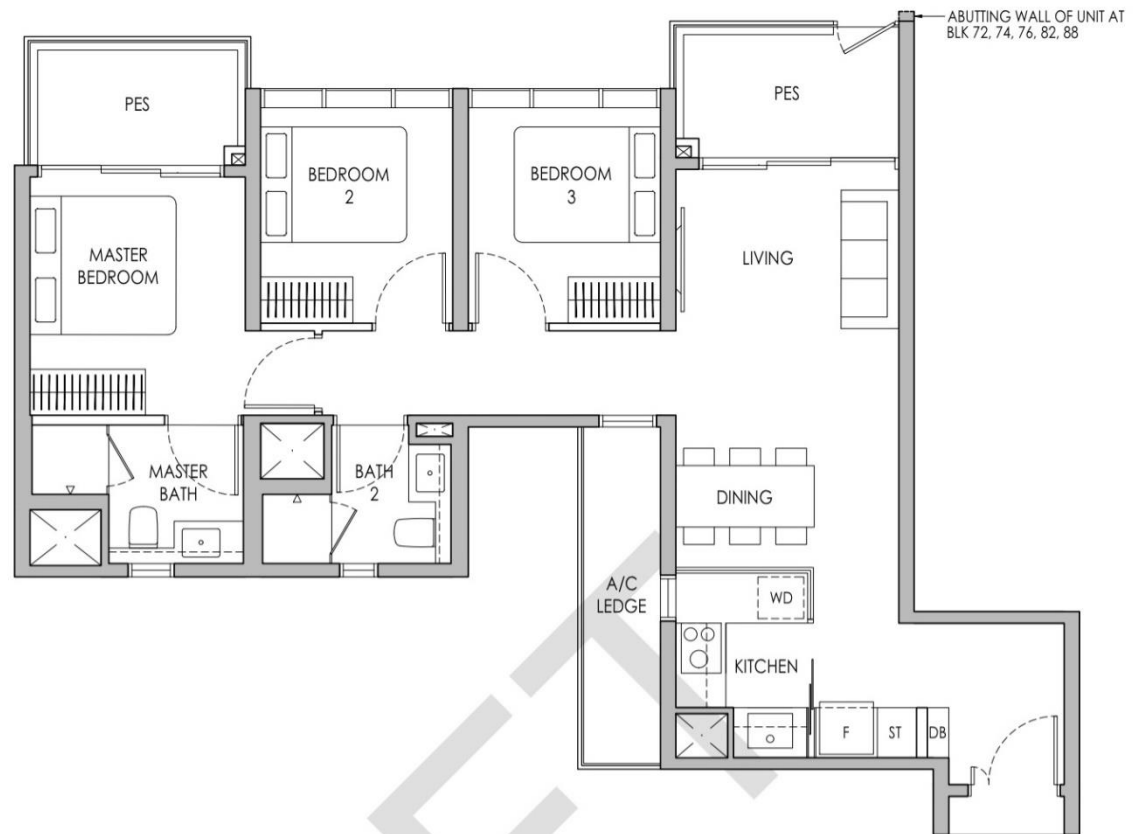
BLK 72 #04-03

BLK 74 #04-11

BLK 76 #04-22\*

BLK 82 #04-43

BLK 88 #04-70, #04-73\*



# Type C1

87 sq m / 936 sq ft

BLK 72 #05-03 - #11-03

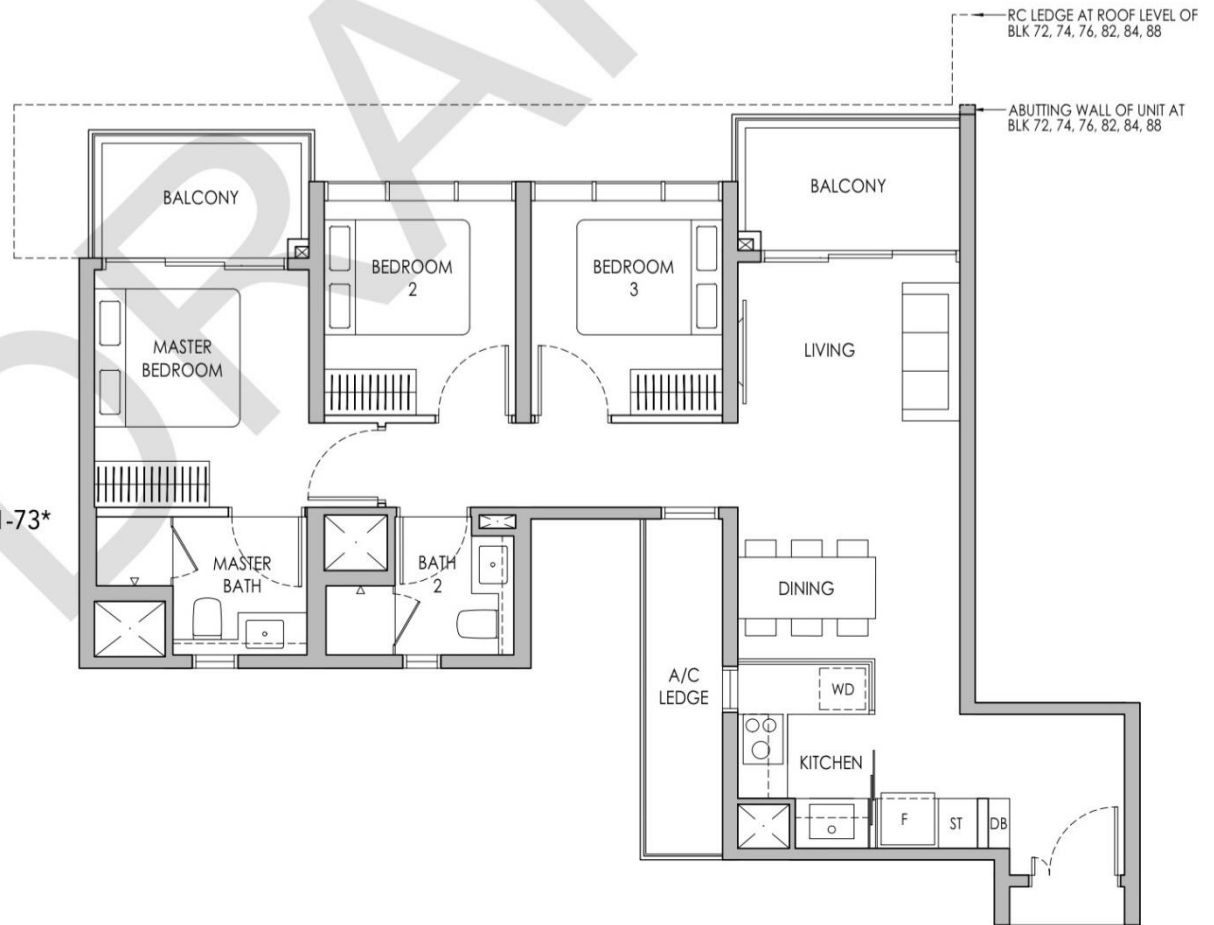
BLK 74 #05-11 - #11-11

BLK 76 #05-22\* - #12-22\*

BLK 82 #05-43 - #13-43

BLK 84 #06-51 - #13-51

BLK 88 #05-70 - #11-70, #05-73\* - #11-73\*



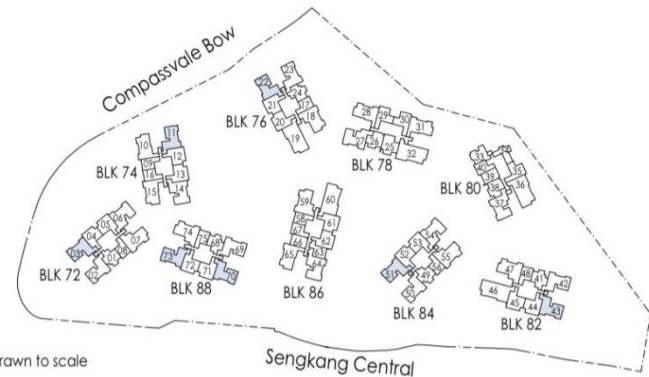
\* Mirror Image



Area includes air-con (A/C) ledge, private enclosed space (PE5), balcony and strata void area where applicable. Some units are mirror images of the apartment plans shown in the brochure. Please refer to the keyplan for orientation. The plans are subject to change as may be approved by relevant authorities. All floor plans are approximate measurements only and are subject to government re-survey. The balcony shall not be enclosed unless with the approved balcony screen. For an illustration of the approved balcony screen, please refer to the diagram annexed hereto as "Annexure A".



Keyplan is not drawn to scale



# 3-BEDROOM

## Type C1a(p)

87 sq m / 936 sq ft

- BLK 72 #04-02
- BLK 76 #04-23\*
- BLK 82 #04-42
- BLK 84 #04-50
- BLK 88 #04-69



# Type C1a

87 sq m / 936 sq ft

- BLK 72 #05-02 - #11-02
- BLK 76 #05-23\* - #12-23\*
- BLK 82 #05-42 - #13-42
- BLK 84 #05-50 - #13-50
- BLK 88 #05-69 - #11-69

RC LEDGE AT ROOF LEVEL OF  
BLK 84  
RC LEDGE AT ROOF LEVEL OF  
BLK 82  
RC LEDGE AT ROOF LEVEL OF  
BLK 72, 76, 88



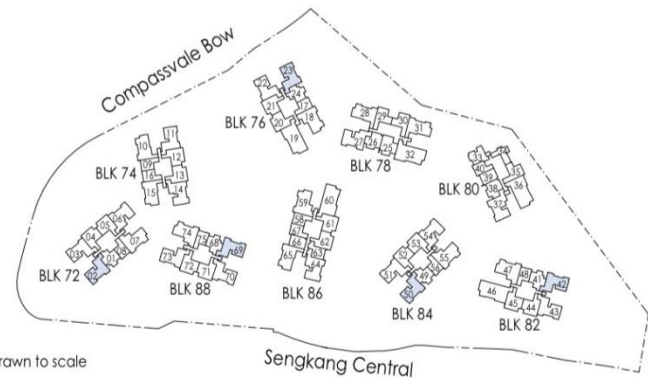
\* Mirror Image



Area includes air-con (A/C) ledge, private enclosed space (PES), balcony and strata void area where applicable. Some units are mirror images of the apartment plans shown in the brochure. Please refer to the keyplan for orientation. The plans are subject to change as may be approved by relevant authorities. All floor plans are approximate measurements only and are subject to government re-survey. The balcony shall not be enclosed unless with the approved balcony screen. For an illustration of the approved balcony screen, please refer to the diagram annexed hereto as "Annexure A".



Keyplan is not drawn to scale



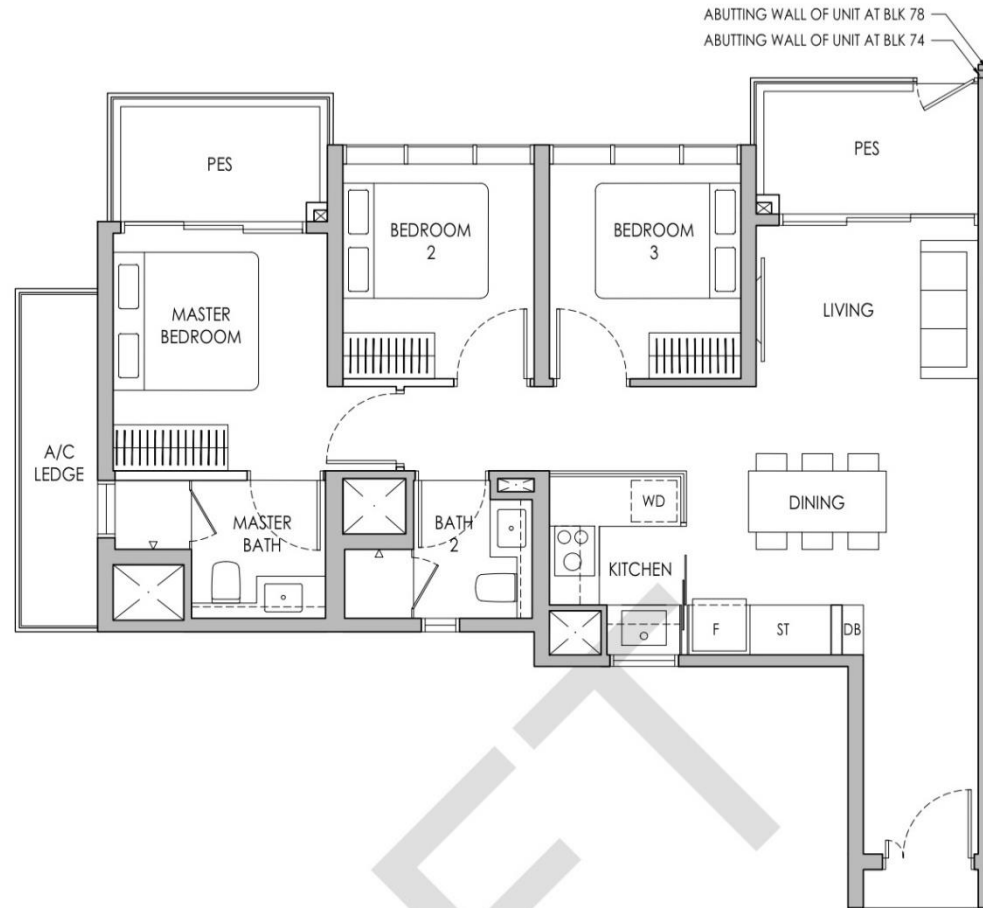


# 3-BEDROOM

## Type C2(p)

87 sq m / 936 sq ft

BLK 74 #04-10\*, #04-15  
BLK 78 #04-28, #04-31\*

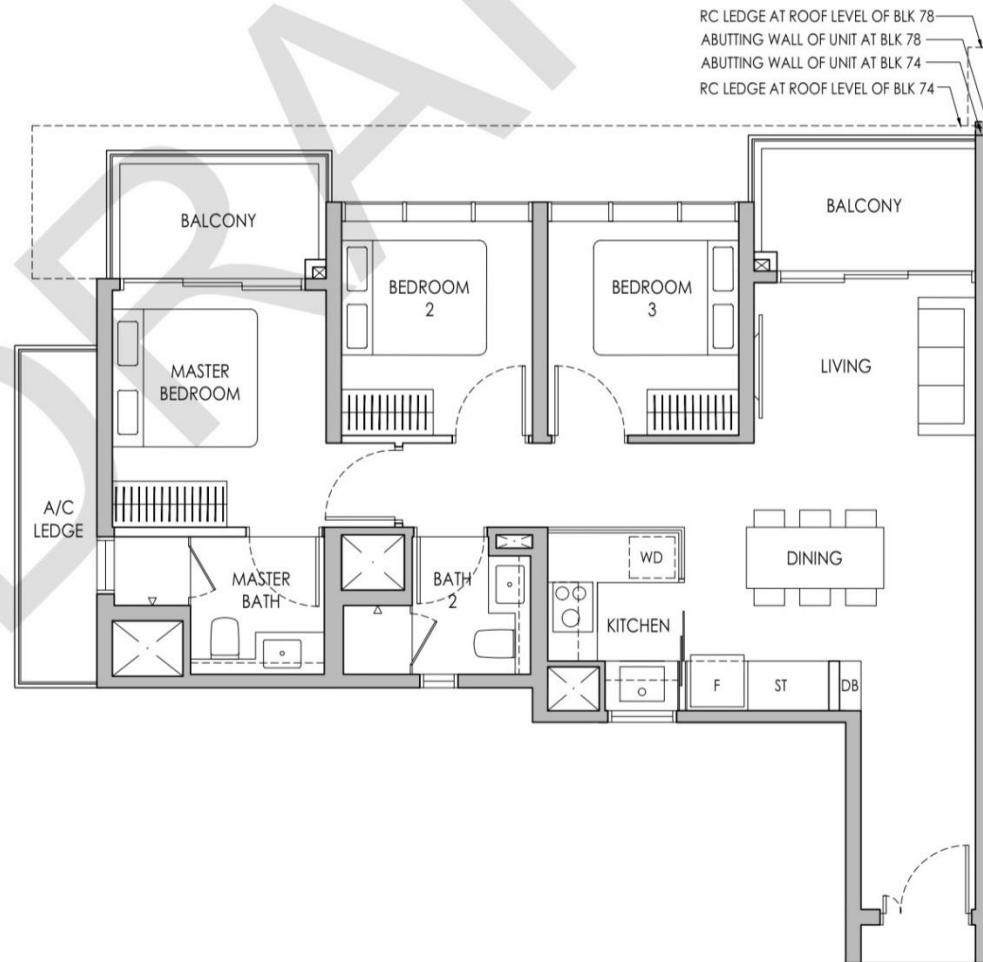


# Type C2

87 sq m / 936 sq ft

BLK 74 #05-10\* - #11-10\*, #05-15 - #11-15

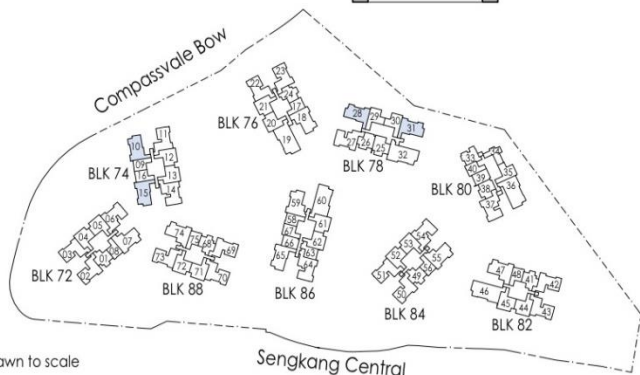
BLK 78 #05-28 - #13-28, #05-31\* - #13-31\*



\* Mirror Image



Area includes air-con (A/C) ledge, private enclosed space (PES), balcony and strata void area where applicable. Some units are mirror images of the apartment plans shown in the brochure. Please refer to the keyplan for orientation. The plans are subject to change as may be approved by relevant authorities. All floor plans are approximate measurements only and are subject to government re-survey. The balcony shall not be enclosed unless with the approved balcony screen. For an illustration of the approved balcony screen, please refer to the diagram annexed hereto as "Annexure A".



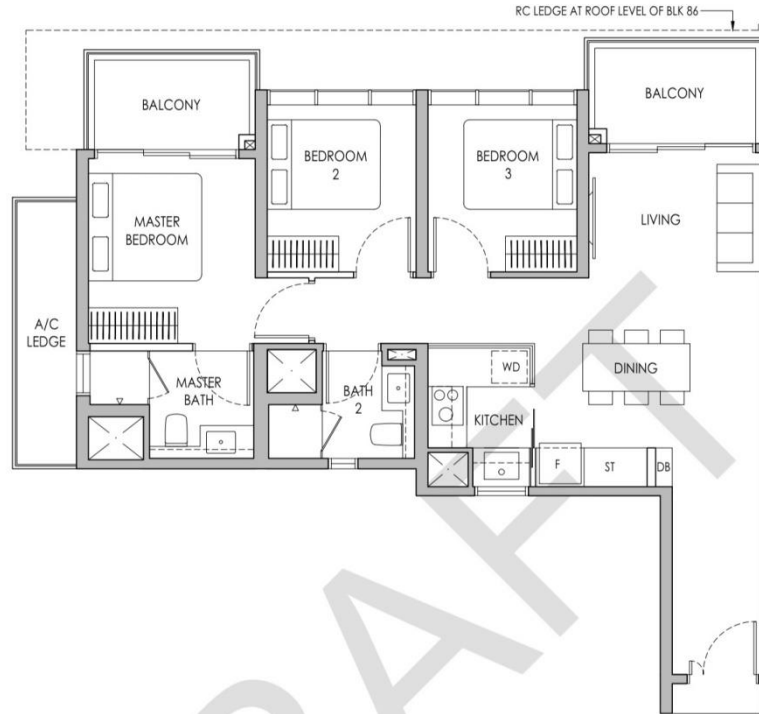
Keyplan is not drawn to scale

# 3-BEDROOM

## Type C2a

88 sq m / 947 sq ft

BLK 86 #06-65 - #13-65

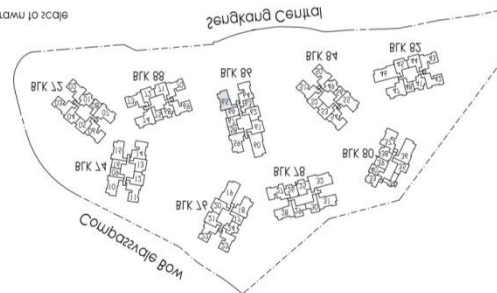


Μην γίνετε αποβλακωμένοι από τις πληροφορίες που σας παρέχει ο κατασκευαστής. Η απόφαση για την αγορά ενός ακινήτου είναι μια απόφαση που απαιτείται να ληφθεί με βάση όλες τις πληροφορίες που είναι διαθέσιμες. Ο κατασκευαστής δεν φέρει ευθύνη για την ακρίβεια των πληροφοριών που παρέχει. Η απόφαση για την αγορά ενός ακινήτου είναι μια απόφαση που απαιτείται να ληφθεί με βάση όλες τις πληροφορίες που είναι διαθέσιμες. Ο κατασκευαστής δεν φέρει ευθύνη για την ακρίβεια των πληροφοριών που παρέχει.



\* Μην γίνετε αποβλακωμένοι

κατά την επίσκεψή σας στο χώρο



# 3-BEDROOM PREMIUM

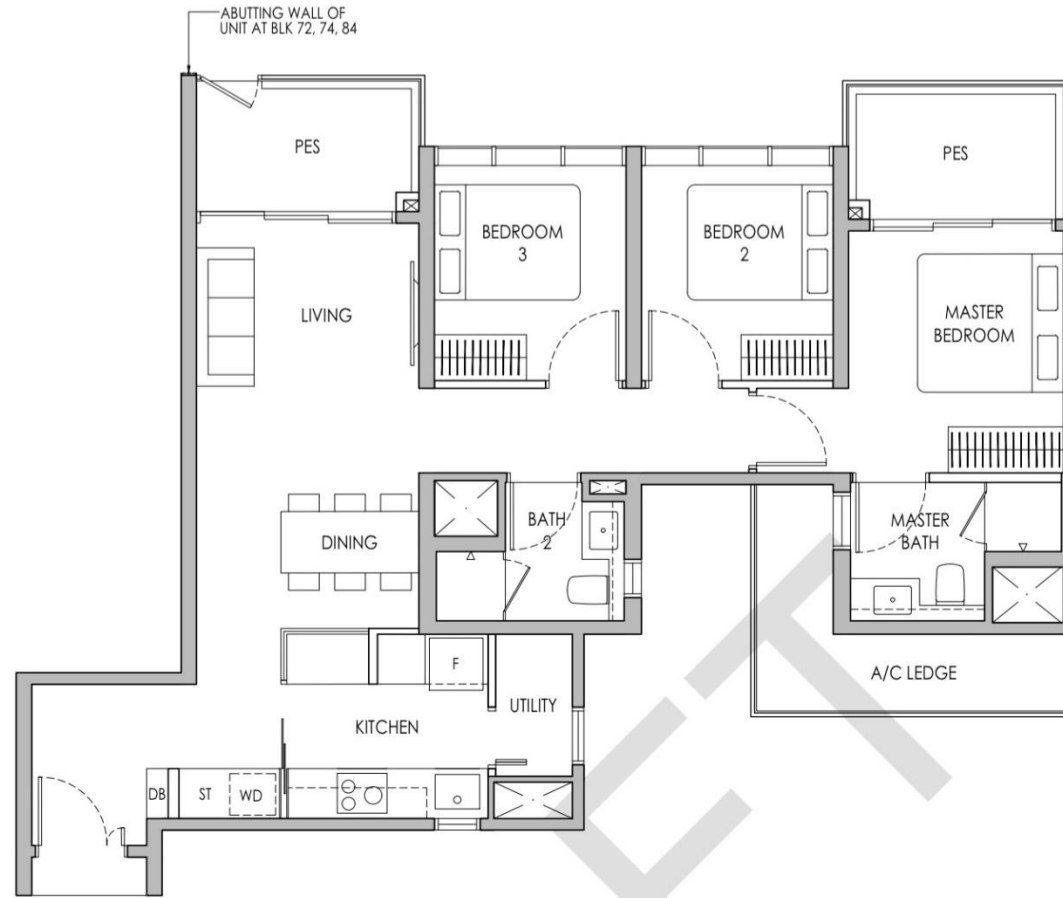
## Type C3P(p)

95 sq m / 1023 sq ft

BLK 72 #04-06

BLK 74 #04-14

BLK 84 #04-54



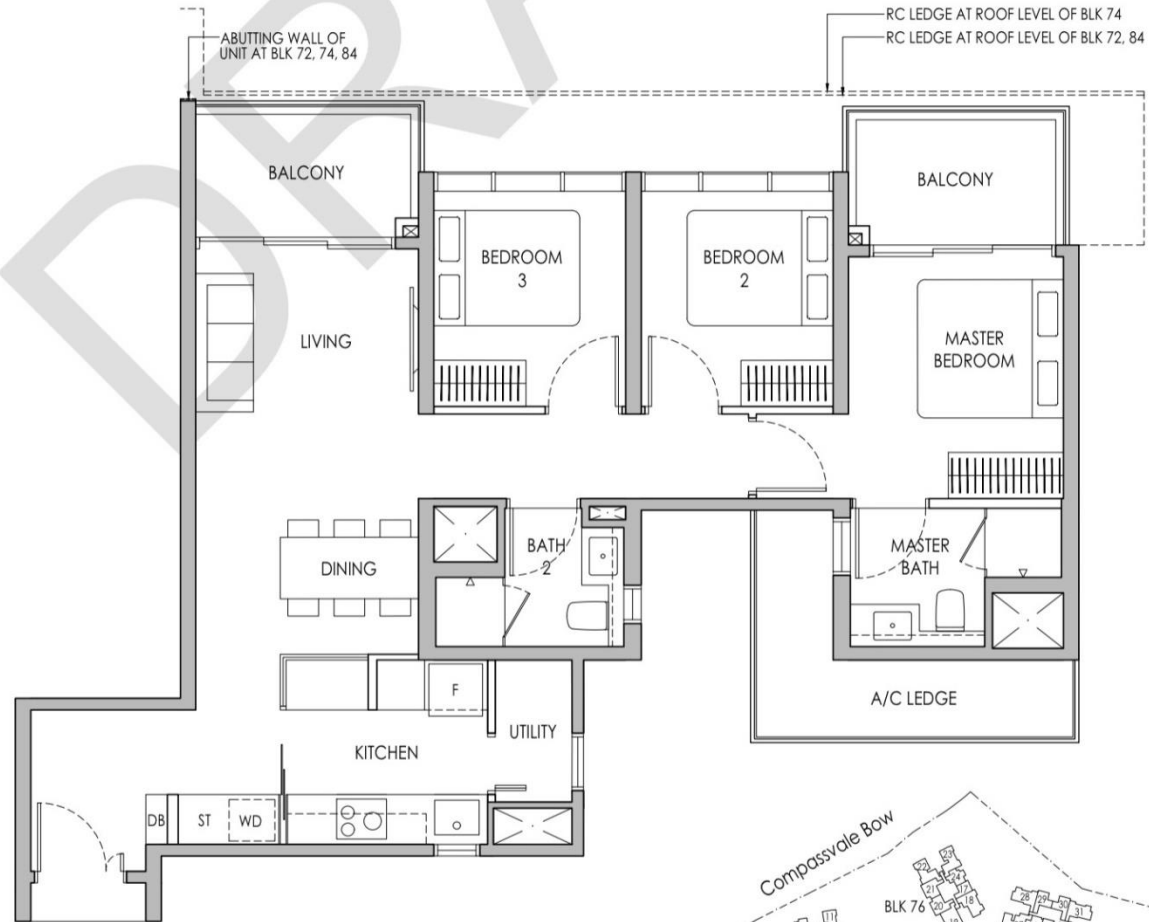
# Type C3P

95 sq m / 1023 sq ft

BLK 72 #05-06 - #11-06

BLK 74 #05-14 - #11-14

BLK 84 #05-54 - #13-54



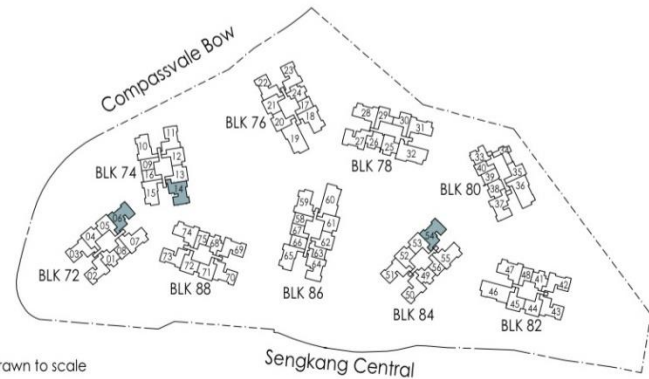
\* Mirror Image



Area includes air-con (A/C) ledge, private enclosed space (PES), balcony and strata void area where applicable. Some units are mirror images of the apartment plans shown in the brochure. Please refer to the keyplan for orientation. The plans are subject to change as may be approved by relevant authorities. All floor plans are approximate measurements only and are subject to government re-survey. The balcony shall not be enclosed unless with the approved balcony screen. For an illustration of the approved balcony screen, please refer to the diagram annexed hereto as "Annexure A".



Keyplan is not drawn to scale



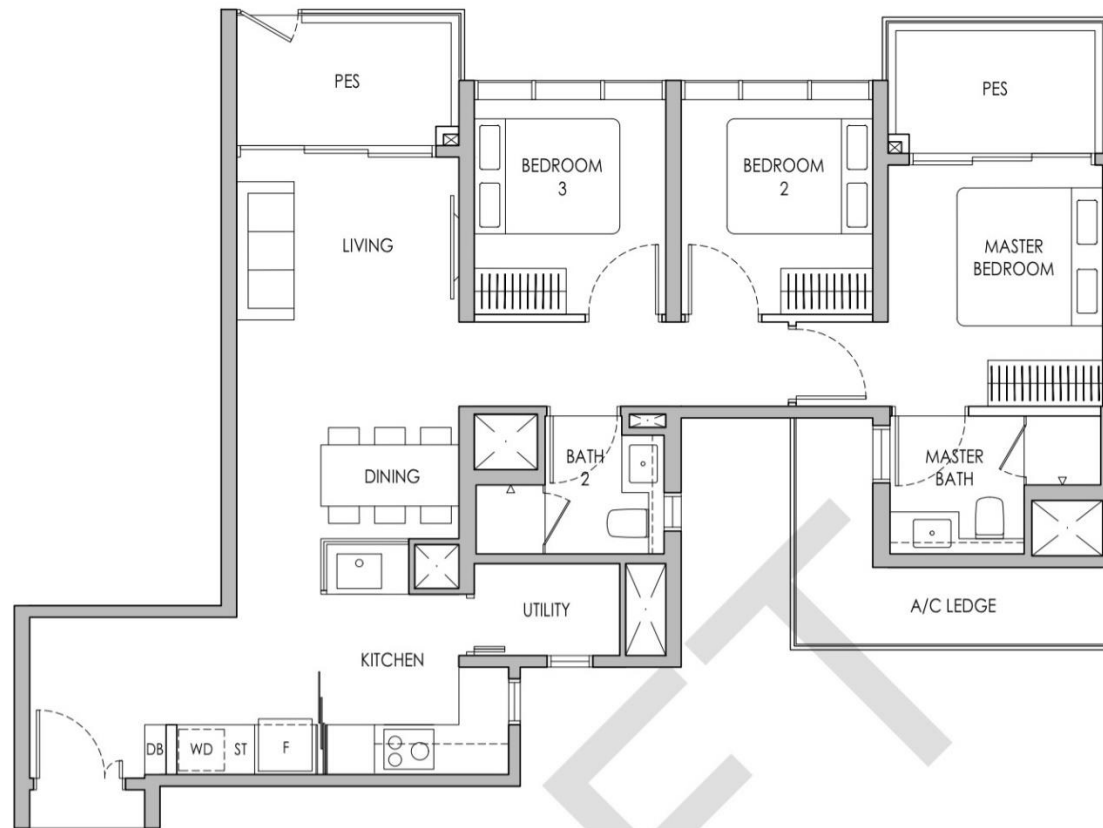
# 3-BEDROOM PREMIUM

Type C3Pa(p)

96 m / 1033 sq ft

BLK 78 #04-27

BLK 80 #04-37\*

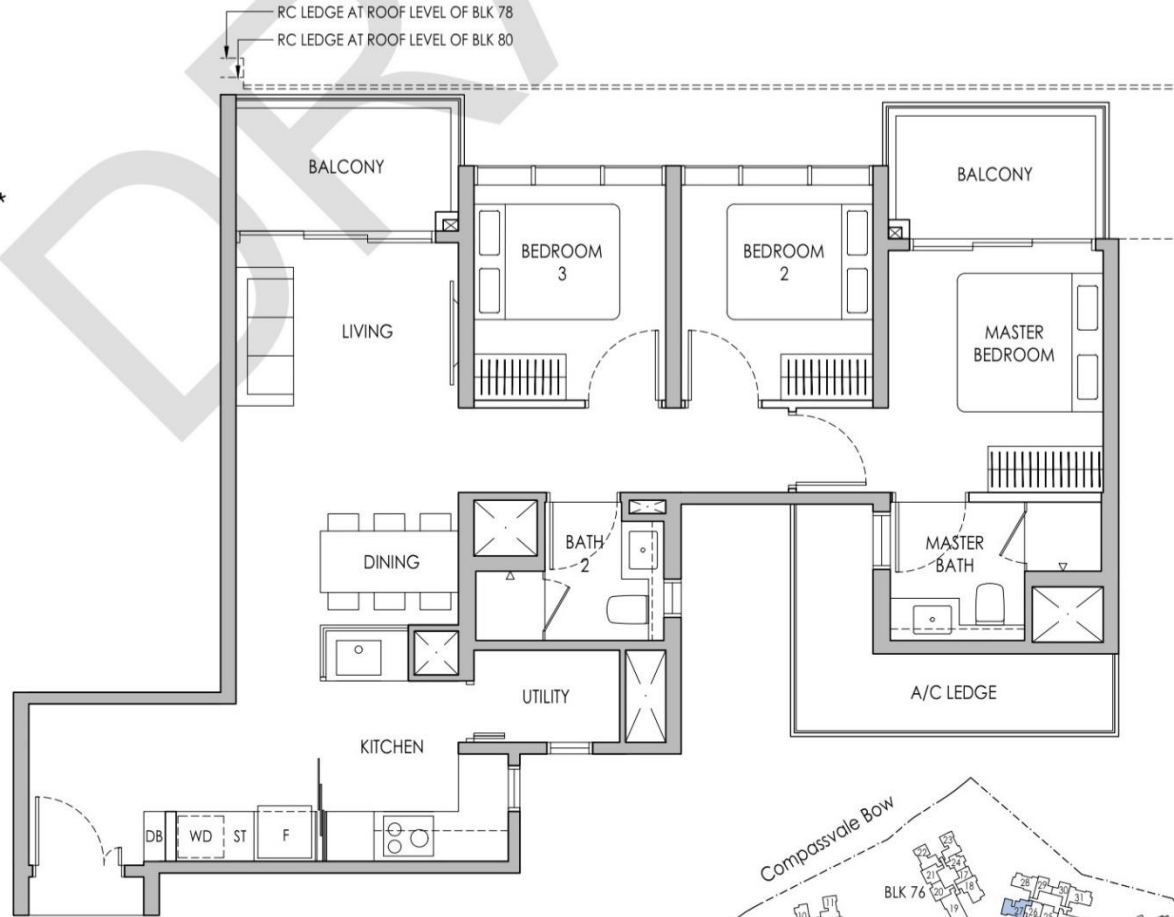


# Type C3Pa

96 sq m / 1033 sq ft

BLK 78 #05-27 - #13-27

BLK 80 #05-37\* - #13-37\*



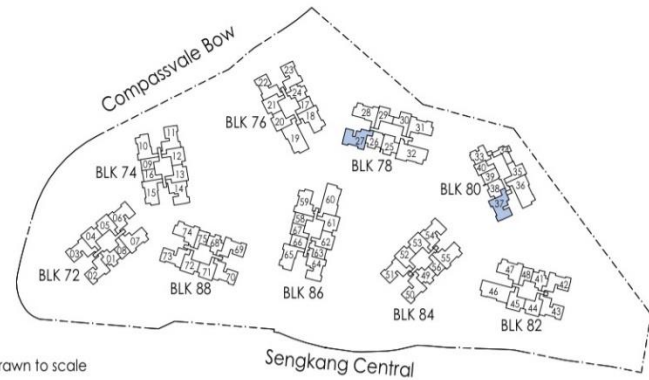
\* Mirror Image



Area includes air-con (A/C) ledge, private enclosed space (PES), balcony and strata void area where applicable. Some units are mirror images of the apartment plans shown in the brochure. Please refer to the keyplan for orientation. The plans are subject to change as may be approved by relevant authorities. All floor plans are approximate measurements only and are subject to government re-survey. The balcony shall not be enclosed unless with the approved balcony screen. For an illustration of the approved balcony screen, please refer to the diagram annexed hereto as "Annexure A".



Keyplan is not drawn to scale



# 3-BEDROOM PREMIUM

Type C4P(p)

98 sq m / 1055 sq ft

BLK 86 #04-64

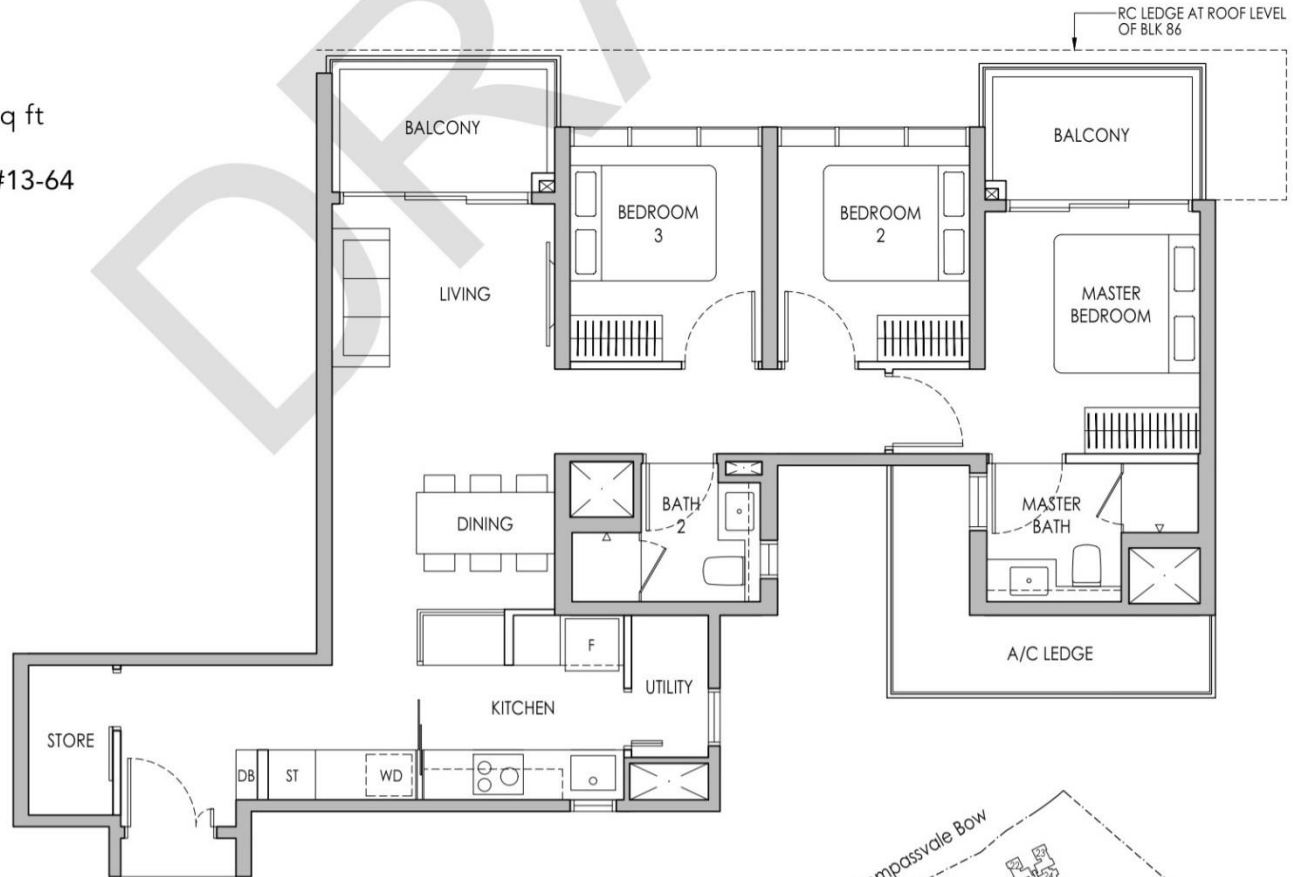




# Type C4P

98 sq m / 1055 sq ft

BLK 86 #05-64 - #13-64



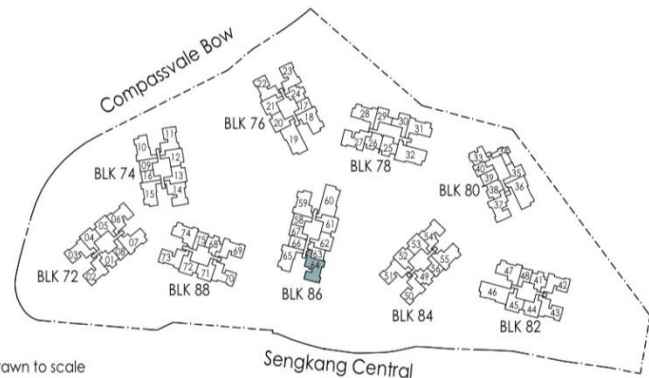
\* Mirror Image



Area includes air-con (A/C) ledge, private enclosed space (PES), balcony and strata void area where applicable. Some units are mirror images of the apartment plans shown in the brochure. Please refer to the keyplan for orientation. The plans are subject to change as may be approved by relevant authorities. All floor plans are approximate measurements only and are subject to government re-survey. The balcony shall not be enclosed unless with the approved balcony screen. For an illustration of the approved balcony screen, please refer to the diagram annexed hereto as "Annexure A".



Keyplan is not drawn to scale



# 3-BEDROOM PREMIUM + FLEXI

Type C5PF(p)

94 sq m / 1012 sq ft

BLK 72 #04-07

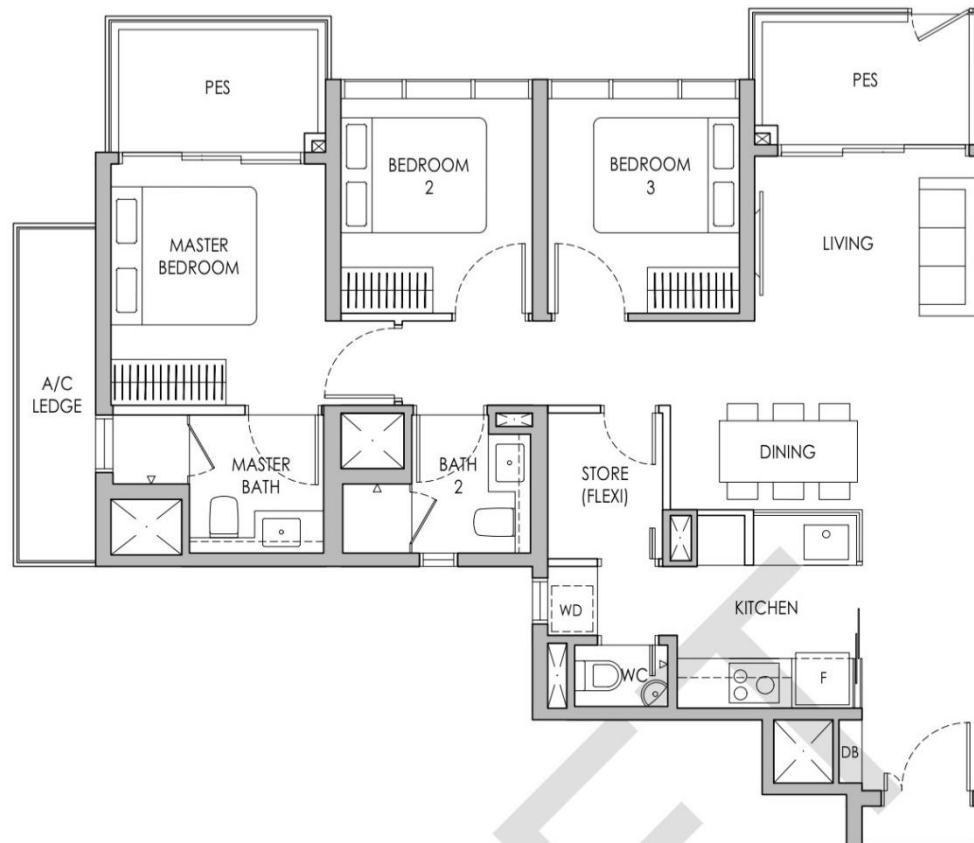
BLK 76 #04-18\*

BLK 82 #04-47

BLK 84 #04-55

BLK 86 #04-59\*

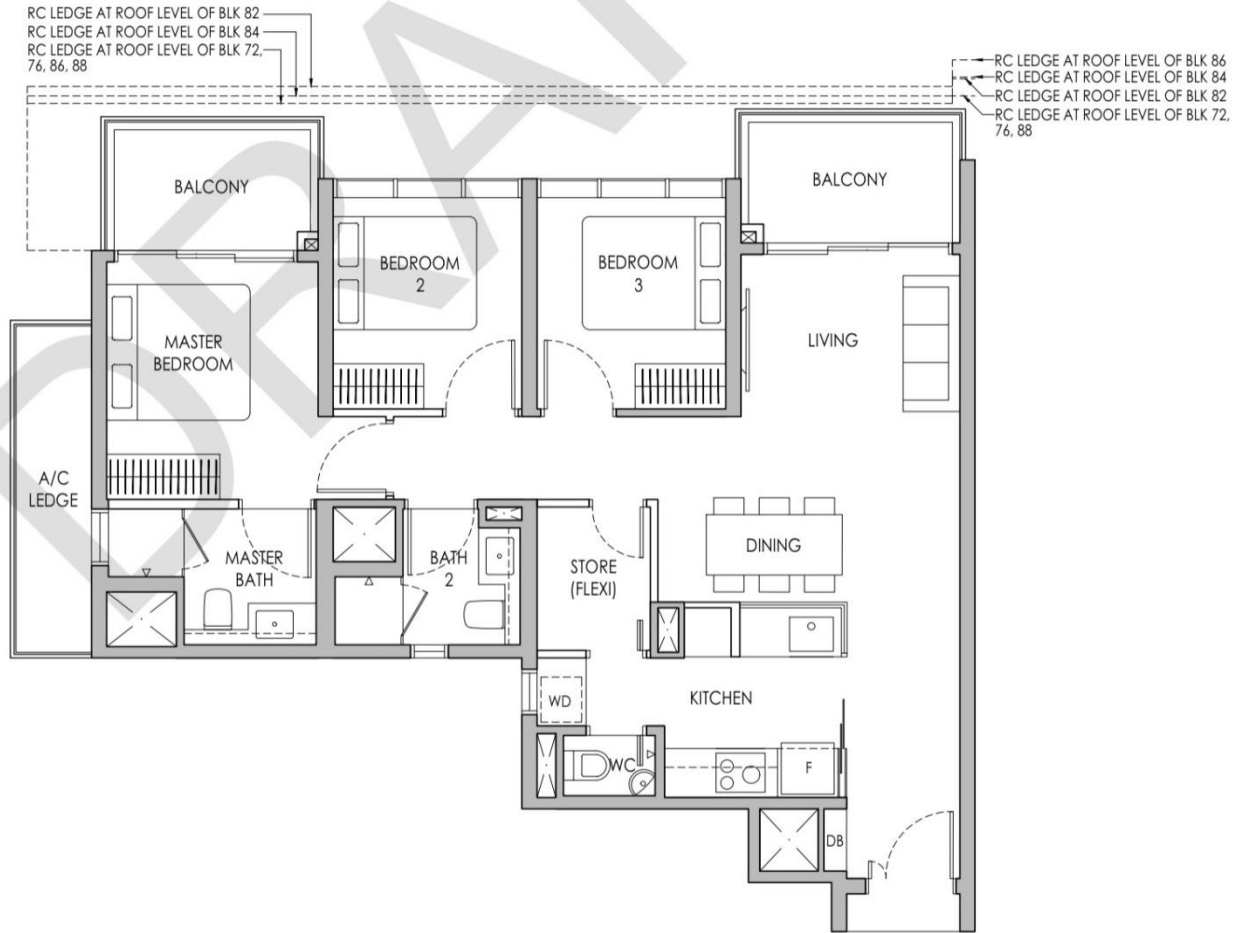
BLK 88 #04-74



# Type C5PF

94 sq m / 1012 sq ft

- BLK 72 #05-07 - #11-07
- BLK 76 #05-18\* - #12-18\*
- BLK 82 #05-47 - #13-47
- BLK 84 #05-55 - #13-55
- BLK 86 #05-59\* - #13-59\*
- BLK 88 #05-74 - #11-74



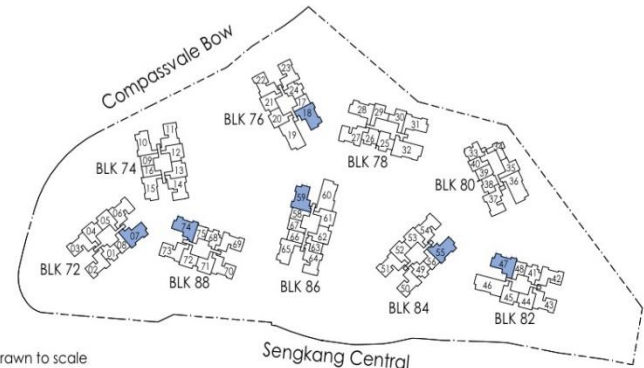
\* Mirror Image



Area includes air-con (A/C) ledge, private enclosed space (PES), balcony and strata void area where applicable. Some units are mirror images of the apartment plans shown in the brochure. Please refer to the keyplan for orientation. The plans are subject to change as may be approved by relevant authorities. All floor plans are approximate measurements only and are subject to government re-survey. The balcony shall not be enclosed unless with the approved balcony screen. For an illustration of the approved balcony screen, please refer to the diagram annexed hereto as "Annexure A".



Keyplan is not drawn to scale



# 4-BEDROOM PREMIUM + FLEXI

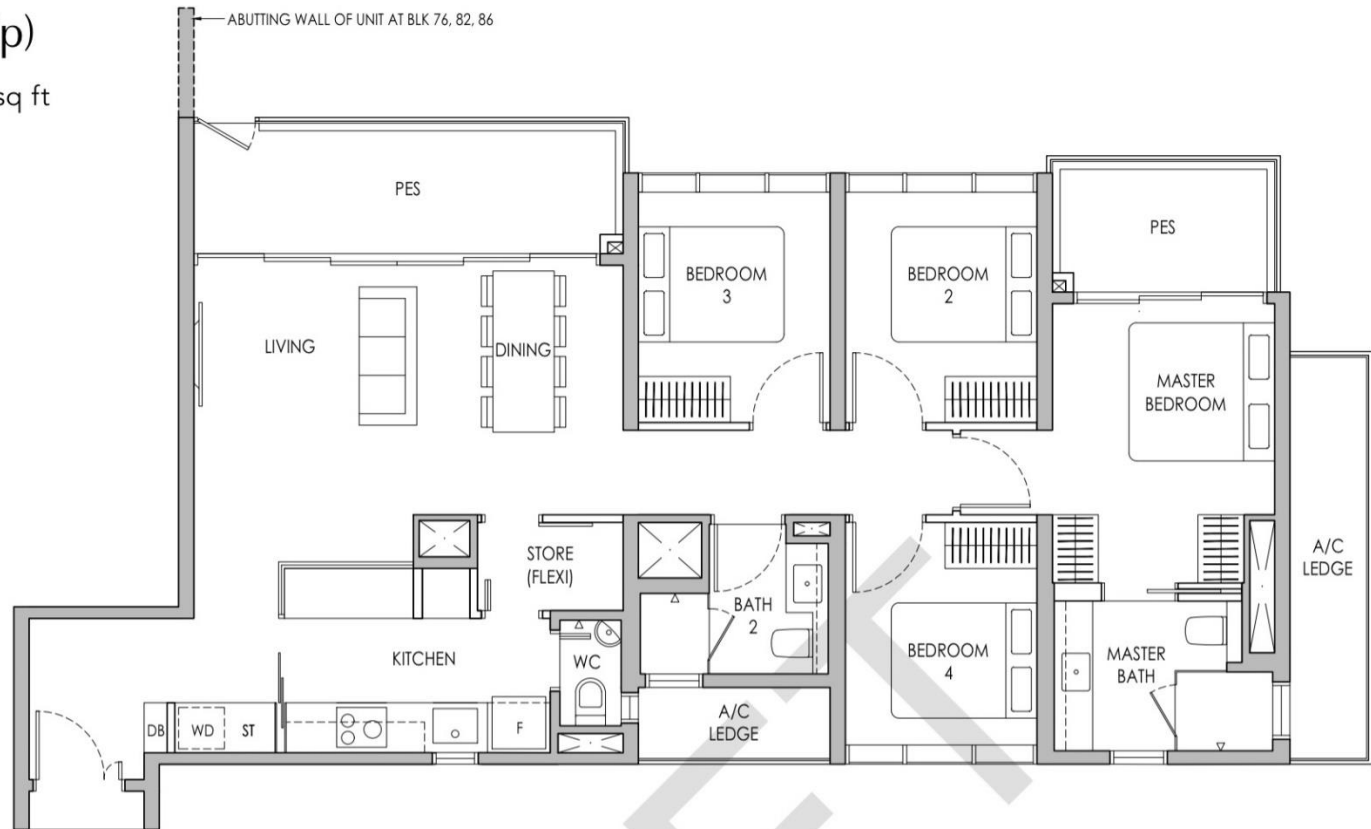
Type D1PF(p)

123 sq m / 1324 sq ft

BLK 76 #04-19\*

BLK 82 #04-46

BLK 86 #04-60\*



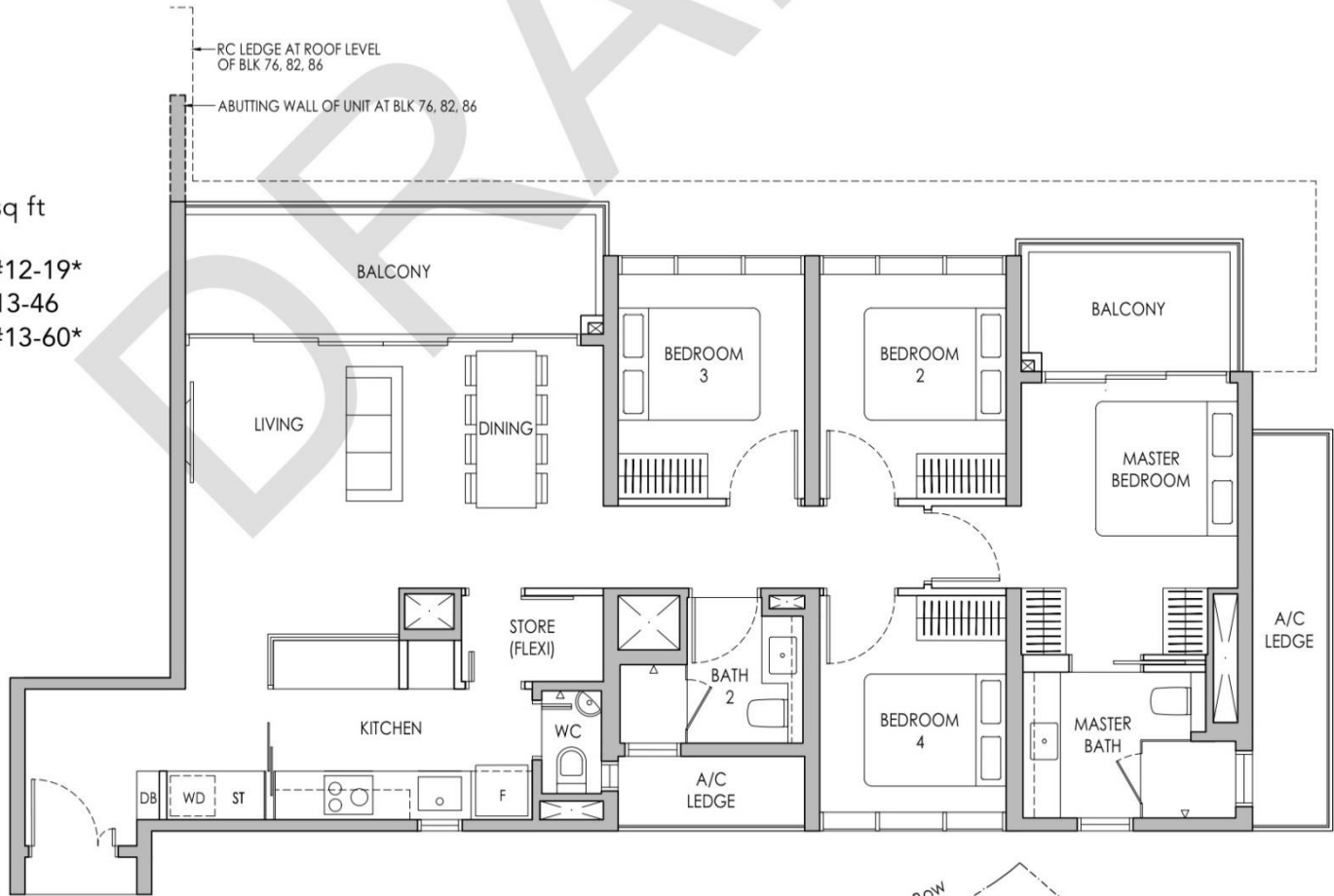
# Type D1PF

123 sq m / 1324 sq ft

BLK 76 #05-19\* - #12-19\*

BLK 82 #05-46 - #13-46

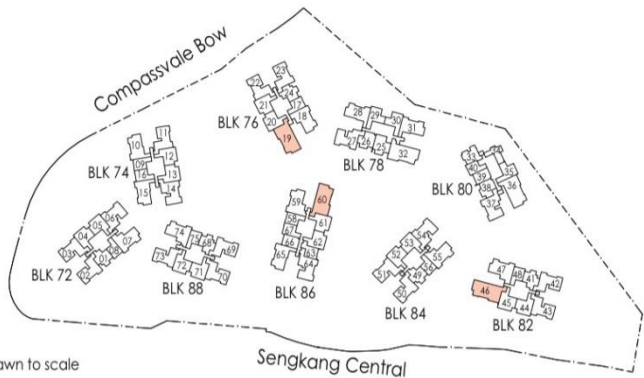
BLK 86 #05-60\* - #13-60\*



\* Mirror Image



Area includes air-con (A/C) ledge, private enclosed space (PES), balcony and strata void area where applicable. Some units are mirror images of the apartment plans shown in the brochure. Please refer to the keyplan for orientation. The plans are subject to change as may be approved by relevant authorities. All floor plans are approximate measurements only and are subject to government re-survey. The balcony shall not be enclosed unless with the approved balcony screen. For an illustration of the approved balcony screen, please refer to the diagram annexed hereto as "Annexure A".



Keyplan is not drawn to scale

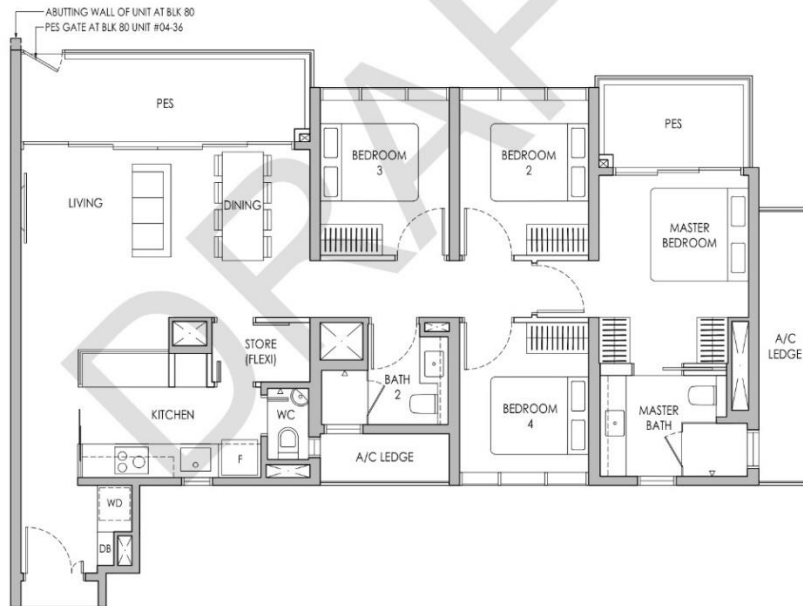
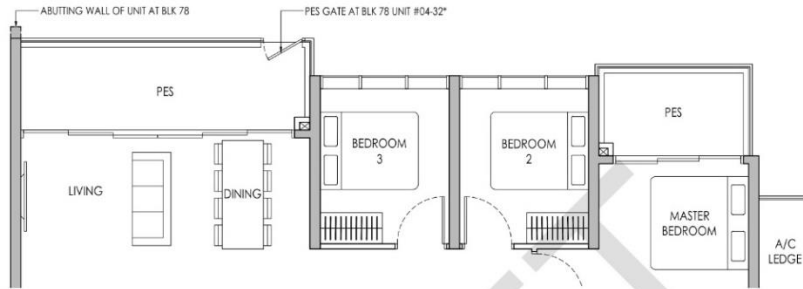
# 4-BEDROOM PREMIUM + FLEXI

Type D2PF(p)

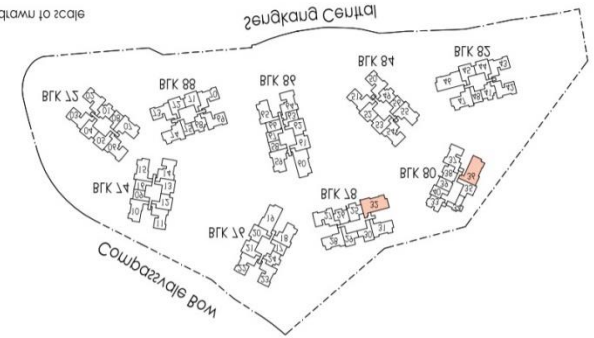
122 sq m / 1313 sq ft

BLK 78 #04-32\*

BLK 80 #04-36



1:1000 scale



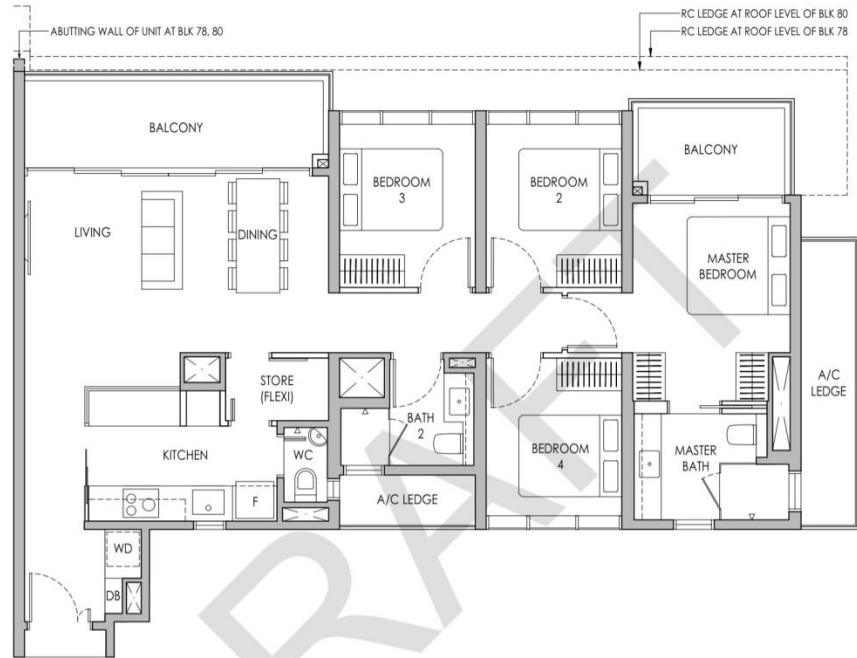
# 4-BEDROOM PREMIUM + FLEXI

## Type D2PF

122 sq m / 1313 sq ft

BLK 78 #05-32\* - #13-32\*

BLK 80 #05-36 - #13-36



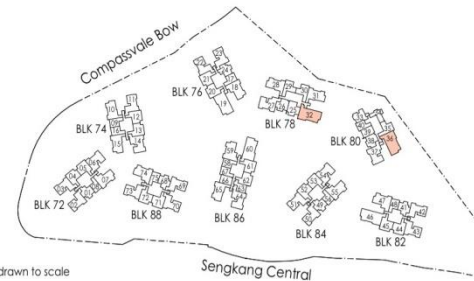
\* Mirror Image



Area includes air-con (A/C) ledge, private enclosed space (PE), balcony and strata void area where applicable. Some units are mirror images of the apartment plans shown in the brochure. Please refer to the keyplan for orientation. The plans are subject to change as may be approved by relevant authorities. All floor plans are approximate measurements only and are subject to government re-survey. The balcony shall not be enclosed unless with the approved balcony screen. For an illustration of the approved balcony screen, please refer to the diagram annexed hereto as "Annexure A".

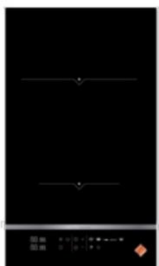


Keyplan is not drawn to scale



# KITCHEN APPLIANCES

De Dietrich 



**FRANKE**





## SANITARY WARES AND ACCESSORIES

**DURAVIT**



Water Closet



Wash Basin

**TECE**



Flush Plate

**inspirione**  
inspired by design



Toilet Paper Holder

**hansgrohe**



Shower Set



Robe Hook



Basin Mixer