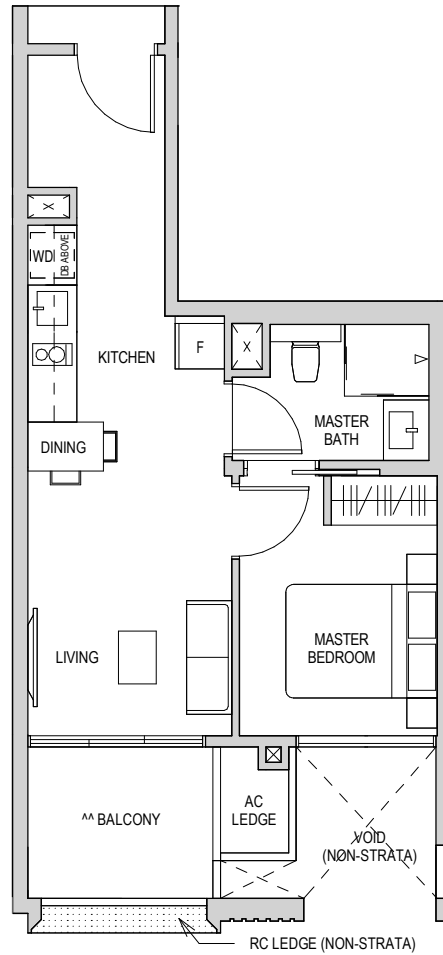


### TYPE A1

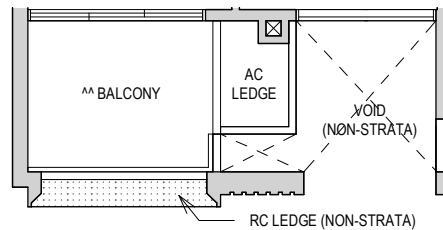
48 SQM / 517 SQFT  
Block 6 #03-18 to #07-18



### TYPE A1

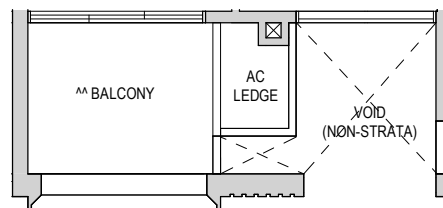
48 SQM / 517 SQFT  
Block 2 #03-10\* to #07-10\*

\* MIRROR IMAGE



### TYPE A1

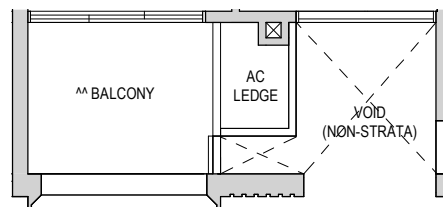
48 SQM / 517 SQFT  
Block 6 #02-18



### TYPE A1

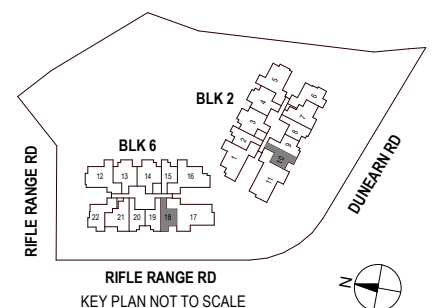
48 SQM / 517 SQFT  
Block 2 #02-10\*

\* MIRROR IMAGE



^ The PES shall not be enclosed.  
^^ The balcony shall not be enclosed.  
Only approved balcony screens are to be used. For an illustration of the approved balcony screen, please refer to the diagram annexed here to as "Annexure 1".

Areas include AC Ledge, Balcony, PES, and Strata Void Area (where applicable). Orientations and facings will differ depending on the unit you are purchasing, please refer to the key plan. Plans are not drawn to scale and subject to change as may be required or approved by the relevant authorities. All areas are estimates only and are subject to final survey.

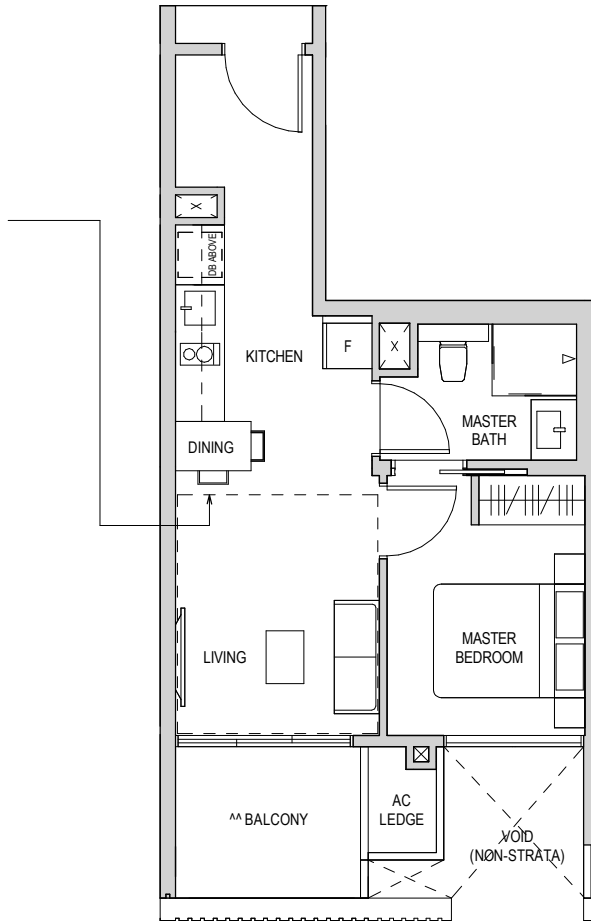


## TYPE A1H

58 SQM / 624 SQFT \*\*

\*\* AREA IS INCLUSIVE OF STRATA VOID AREA ABOVE LIVING AS PER DOTTED LINE.

Block 6 #08-18



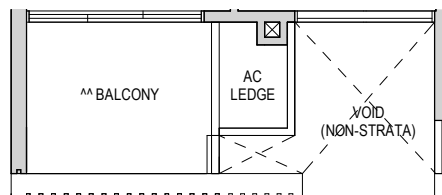
## TYPE A1H

58 SQM / 624 SQFT \*\*

\*\* AREA IS INCLUSIVE OF STRATA VOID AREA ABOVE LIVING AS PER DOTTED LINE.

Block 2 #08-10\*

\* MIRROR IMAGE

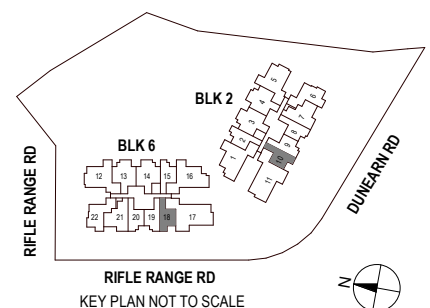


^ The PES shall not be enclosed.

^^ The balcony shall not be enclosed.

Only approved balcony screens are to be used. For an illustration of the approved balcony screen, please refer to the diagram annexed here to as "Annexure 1".

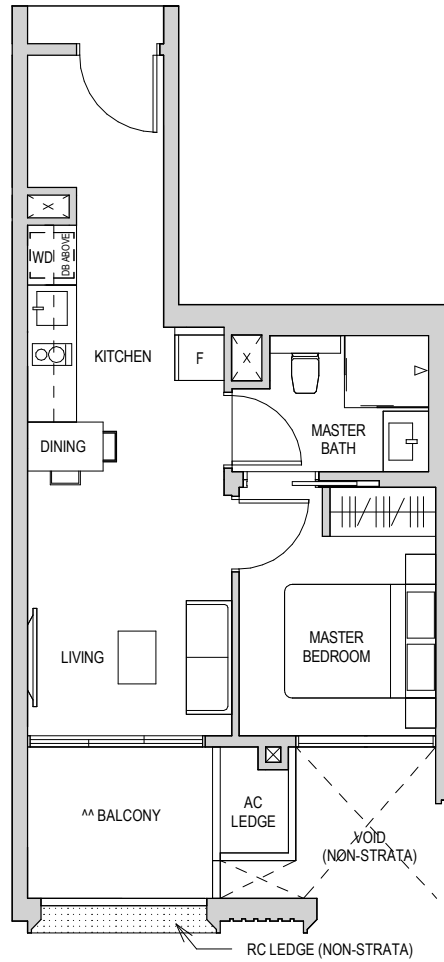
Areas include AC Ledge, Balcony, PES, and Strata Void Area (where applicable). Orientations and facings will differ depending on the unit you are purchasing, please refer to the key plan. Plans are not drawn to scale and subject to change as may be required or approved by the relevant authorities. All areas are estimates only and are subject to final survey.



## TYPE A2

48 SQM / 517 SQFT  
 Block 6 #03-19\* to #07-19\*  
 Block 6 #03-20 to #07-20

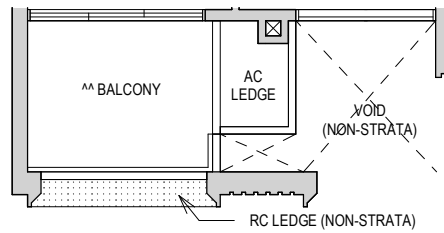
\* MIRROR IMAGE



## TYPE A2

48 SQM / 517 SQFT  
 Block 2 #03-08\* to #07-08\*  
 Block 2 #03-09 to #07-09

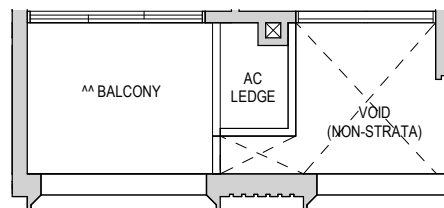
\* MIRROR IMAGE



## TYPE A2

48 SQM / 517 SQFT  
 Block 6 #02-19\*, #02-20

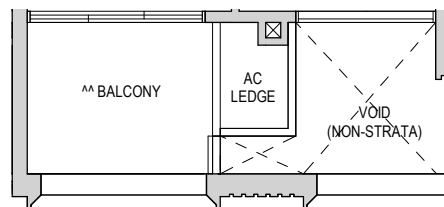
\* MIRROR IMAGE



## TYPE A2

48 SQM / 517 SQFT  
 Block 2 #02-08\*, #02-09

\* MIRROR IMAGE

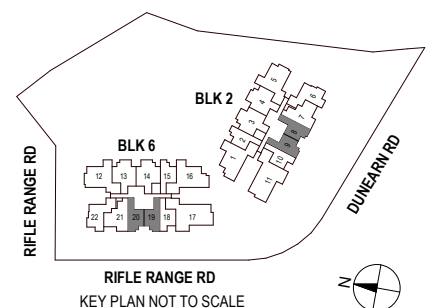


^ The PES shall not be enclosed.

^^ The balcony shall not be enclosed.

Only approved balcony screens are to be used. For an illustration of the approved balcony screen, please refer to the diagram annexed here to as "Annexure 1".

Areas include AC Ledge, Balcony, PES, and Strata Void Area (where applicable). Orientations and facings will differ depending on the unit you are purchasing, please refer to the key plan. Plans are not drawn to scale and subject to change as may be required or approved by the relevant authorities. All areas are estimates only and are subject to final survey.



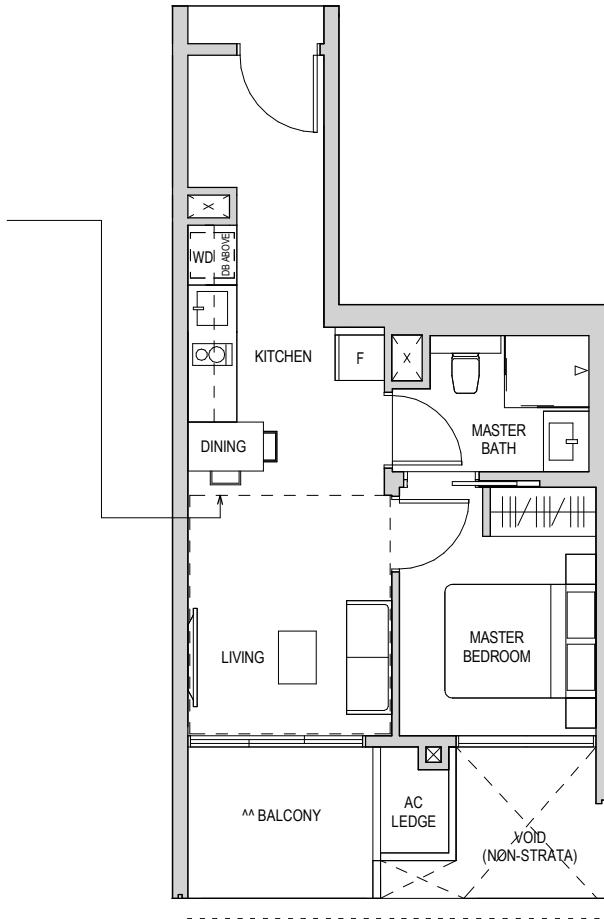
## TYPE A2H

58 SQM / 624 SQFT \*\*

\*\* AREA OF INCLUSIVE OF STRATA VOID AREA ABOVE LIVING AS PER DOTTED LINE.

Block 6 #08-19\*, #08-20

\* MIRROR IMAGE



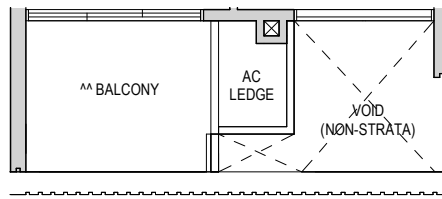
## TYPE A2H

58 SQM / 624 SQFT \*\*

\*\* AREA OF INCLUSIVE OF STRATA VOID AREA ABOVE LIVING AS PER DOTTED LINE.

Block 2 #08-08\*, #08-09

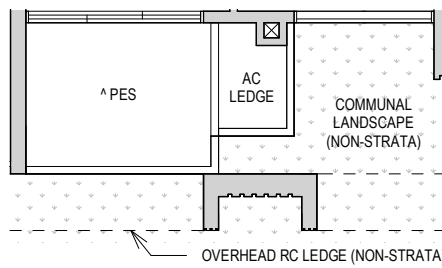
\* MIRROR IMAGE



## TYPE A2 (PES)

48 SQM / 517 SQFT

Block 6 #01-20

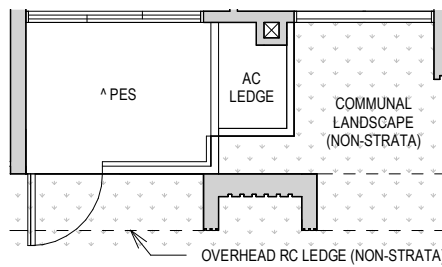


## TYPE A2 (PES)

48 SQM / 517 SQFT

Block 2 #01-08\*

\* MIRROR IMAGE

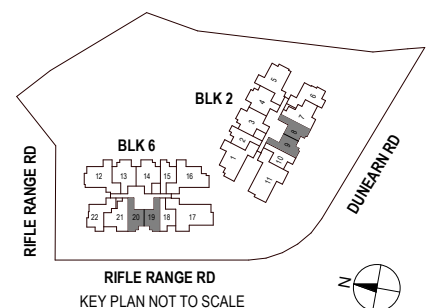


^ The PES shall not be enclosed.

^^ The balcony shall not be enclosed.

Only approved balcony screens are to be used. For an illustration of the approved balcony screen, please refer to the diagram annexed here to as 'Annexure 1'.

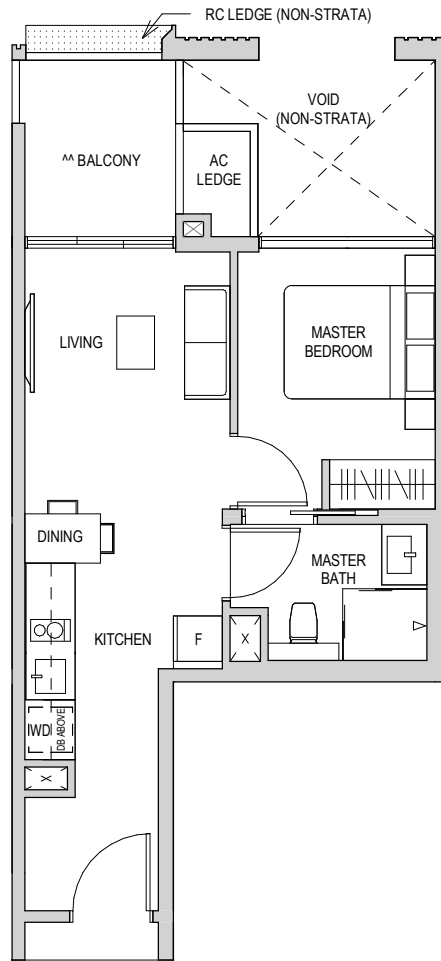
Areas include AC Ledge, Balcony, PES, and Strata Void Area (where applicable). Orientations and facings will differ depending on the unit you are purchasing, please refer to the key plan. Plans are not drawn to scale and subject to change as may be required or approved by the relevant authorities. All areas are estimates only and are subject to final survey.



### TYPE A3

47 SQM / 506 SQFT  
 Block 2 #03-02\* to #07-02\*  
 Block 6 #03-15 to #07-15

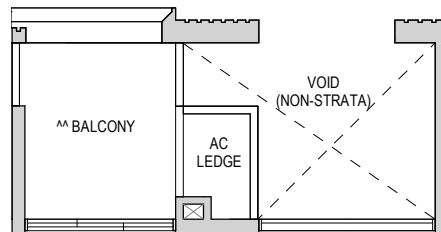
\* MIRROR IMAGE



### TYPE A3

47 SQM / 506 SQFT  
 Block 2 #02-02\*  
 Block 6 #02-15

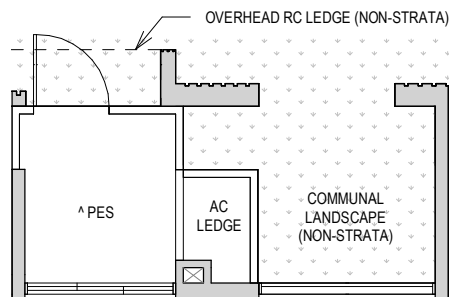
\* MIRROR IMAGE



### TYPE A3 (PES)

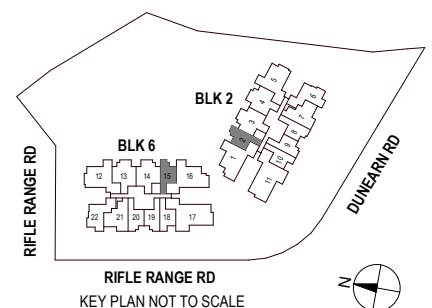
47 SQM / 506 SQFT  
 Block 2 #01-02\*  
 Block 6 #01-15

\* MIRROR IMAGE



^ The PES shall not be enclosed.  
 ^^ The balcony shall not be enclosed.  
 Only approved balcony screens are to be used. For an illustration of the approved balcony screen, please refer to the diagram annexed here to as "Annexure 1".

Areas include AC Ledge, Balcony, PES, and Strata Void Area (where applicable). Orientations and facings will differ depending on the unit you are purchasing, please refer to the key plan. Plans are not drawn to scale and subject to change as may be required or approved by the relevant authorities. All areas are estimates only and are subject to final survey.



# TYPE A3H

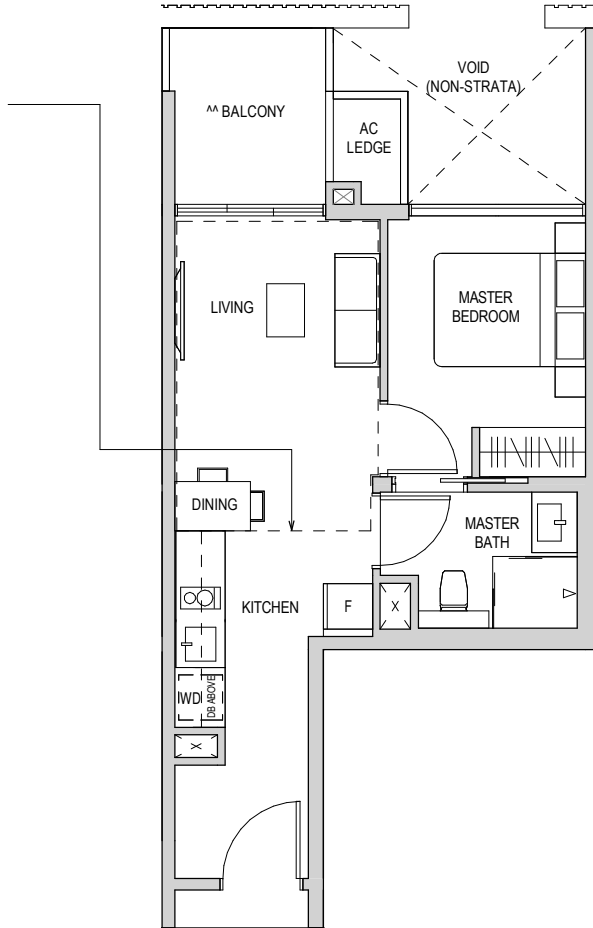
59 SQM / 635 SQFT \*\*

\*\* AREA IS INCLUSIVE OF STRATA VOID AREA ABOVE LIVING AND DINING AS PER DOTTED LINE.

Block 2 #08-02\*

Block 6 #08-15

\* MIRROR IMAGE

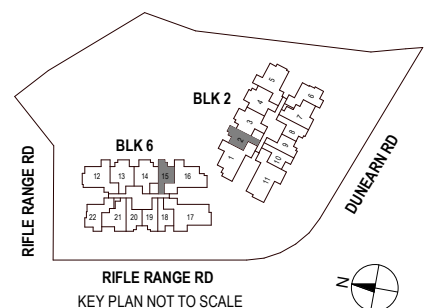


^ The PES shall not be enclosed.

^^ The balcony shall not be enclosed.

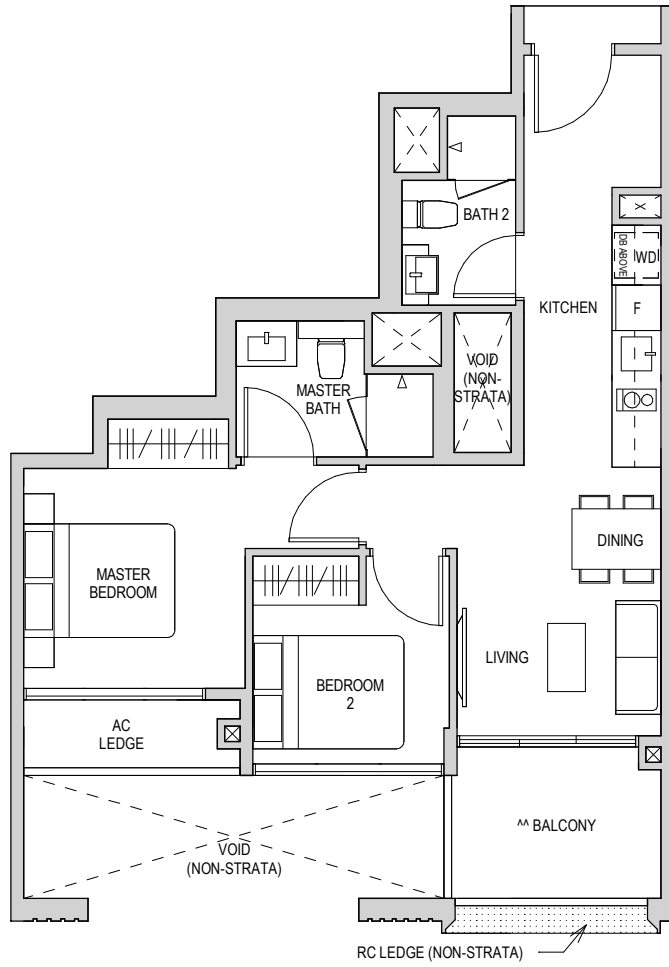
Only approved balcony screens are to be used. For an illustration of the approved balcony screen, please refer to the diagram annexed here to as 'Annexure 1'.

Areas include AC Ledge, Balcony, PES, and Strata Void Area (where applicable). Orientations and facings will differ depending on the unit you are purchasing, please refer to the key plan. Plans are not drawn to scale and subject to change as may be required or approved by the relevant authorities. All areas are estimates only and are subject to final survey.



### TYPE B1

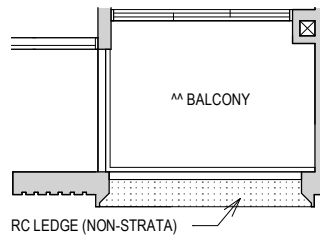
64 SQM / 689 SQFT  
Block 6 #03-21 to #07-21



### TYPE B1

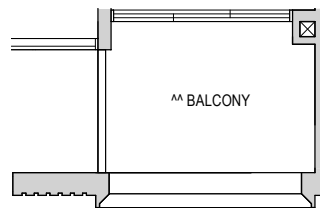
64 SQM / 689 SQFT  
Block 2 #03-07\* to #07-07\*

\* MIRROR IMAGE



### TYPE B1

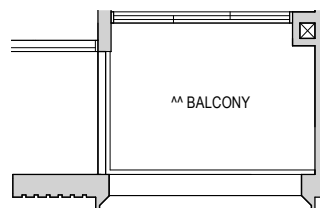
64 SQM / 689 SQFT  
Block 6 #02-21



### TYPE B1

64 SQM / 689 SQFT  
Block 2 #02-07\*

\* MIRROR IMAGE

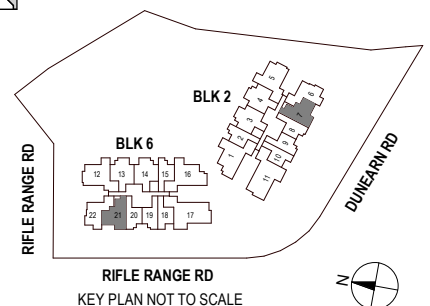


<sup>^</sup> The PES shall not be enclosed.

<sup>^^</sup> The balcony shall not be enclosed.

Only approved balcony screens are to be used. For an illustration of the approved balcony screen, please refer to the diagram annexed here to as "Annexure 1".

Areas include AC Ledge, Balcony, PES, and Strata Void Area (where applicable). Orientations and facings will differ depending on the unit you are purchasing, please refer to the key plan. Plans are not drawn to scale and subject to change as may be required or approved by the relevant authorities. All areas are estimates only and are subject to final survey.

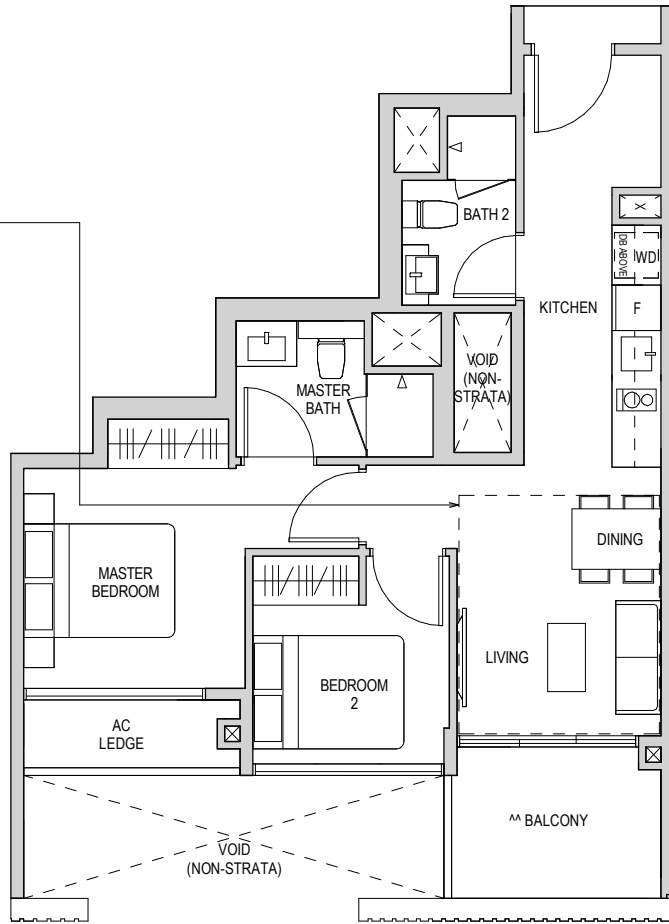


## TYPE B1H

74 SQM / 797 SQFT \*\*

\*\* AREA IS INCLUSIVE OF STRATA VOID AREA ABOVE LIVING AND DINING AS PER DOTTED LINE.

Block 6 #08-21



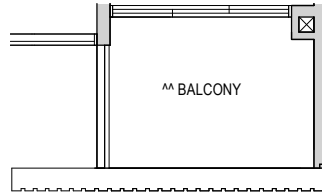
## TYPE B1H

74 SQM / 797 SQFT \*\*

\*\* AREA IS INCLUSIVE OF STRATA VOID AREA ABOVE LIVING AND DINING AS PER DOTTED LINE.

Block 2 #08-07\*

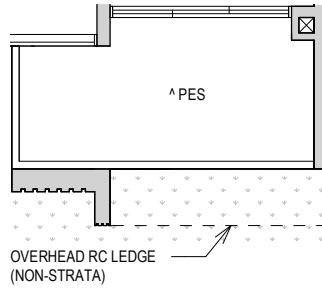
\* MIRROR IMAGE



## TYPE B1 (PES)

65 SQM / 700 SQFT

Block 6 #01-21

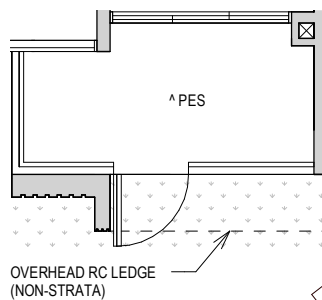


## TYPE B1 (PES)

65 SQM / 700 SQFT

Block 2 #01-07\*

\* MIRROR IMAGE

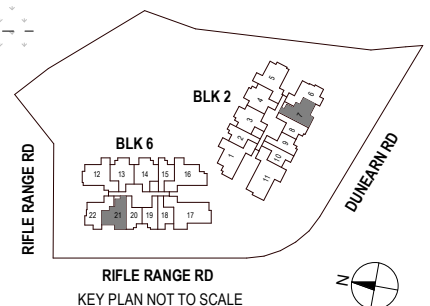


^ The PES shall not be enclosed.

^^ The balcony shall not be enclosed.

Only approved balcony screens are to be used. For an illustration of the approved balcony screen, please refer to the diagram annexed here to as "Annexure 1".

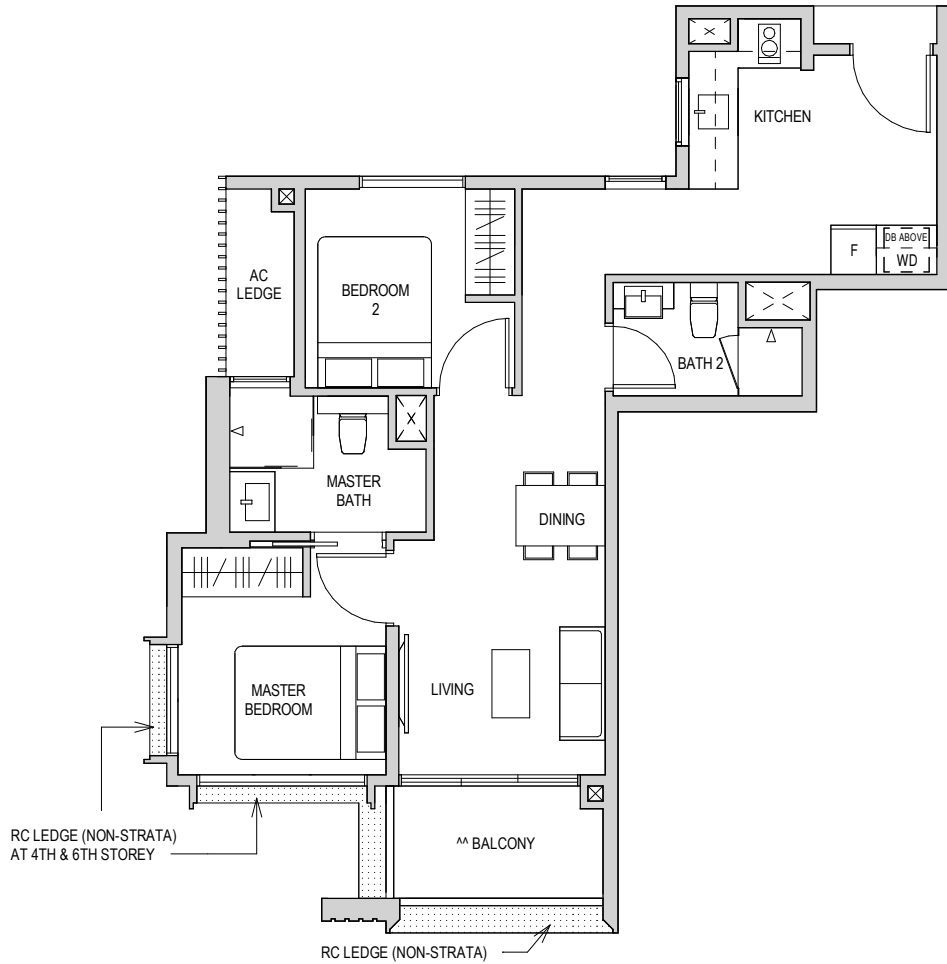
Areas include AC Ledge, Balcony, PES, and Strata Void Area (where applicable). Orientations and facings will differ depending on the unit you are purchasing, please refer to the key plan. Plans are not drawn to scale and subject to change as may be required or approved by the relevant authorities. All areas are estimates only and are subject to final survey.





## TYPE B2

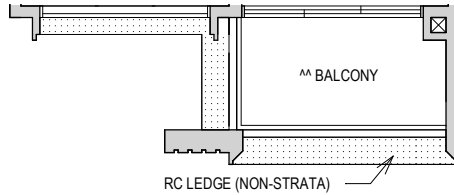
67 SQM / 721 SQFT  
Block 6 #03-22 to #07-22



## TYPE B2

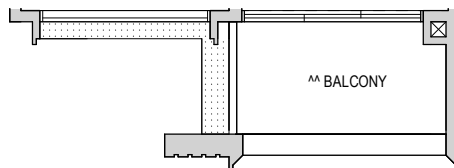
67 SQM / 721 SQFT  
Block 2 #03-06\* to #07-06\*

\* MIRROR IMAGE



## TYPE B2

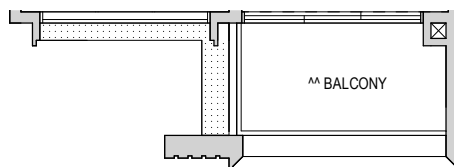
67 SQM / 721 SQFT  
Block 6 #02-22



## TYPE B2

67 SQM / 721 SQFT  
Block 2 #02-06\*

\* MIRROR IMAGE

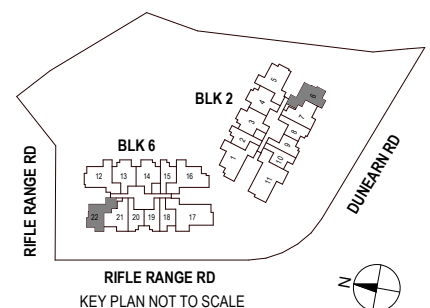


^ The PES shall not be enclosed.

^^ The balcony shall not be enclosed.

Only approved balcony screens are to be used. For an illustration of the approved balcony screen, please refer to the diagram annexed here to as "Annexure 1".

Areas include AC Ledge, Balcony, PES, and Strata Void Area (where applicable). Orientations and facings will differ depending on the unit you are purchasing, please refer to the key plan. Plans are not drawn to scale and subject to change as may be required or approved by the relevant authorities. All areas are estimates only and are subject to final survey.

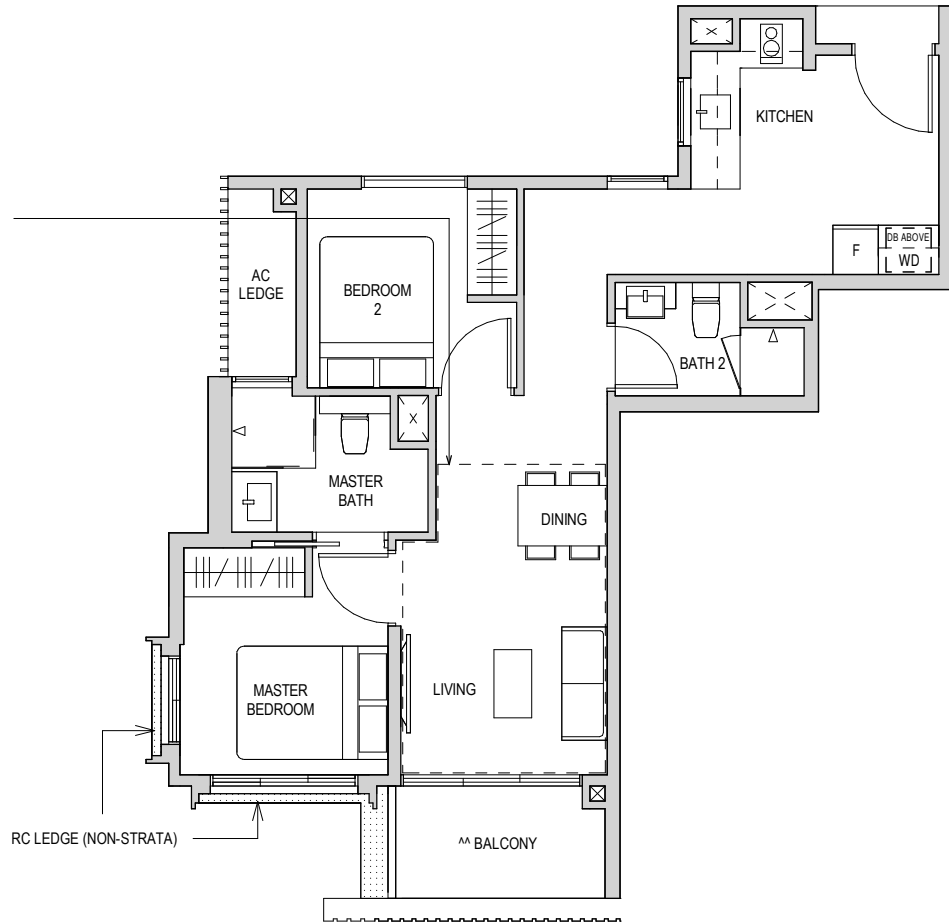


## TYPE B2H

79 SQM / 850 SQFT \*\*

\*\* AREA IS INCLUSIVE OF STRATA VOID AREA ABOVE LIVING AND DINING AS PER DOTTED LINE.

Block 6 #08-22



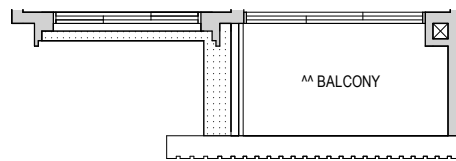
## TYPE B2H

79 SQM / 850 SQFT \*\*

\*\* AREA IS INCLUSIVE OF STRATA VOID AREA ABOVE LIVING AND DINING AS PER DOTTED LINE.

Block 2 #08-06\*

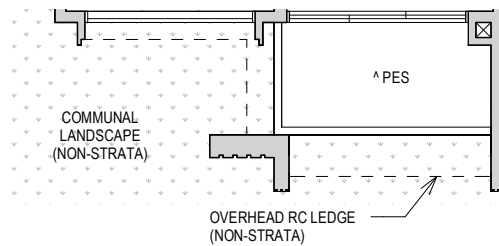
\* MIRROR IMAGE



## TYPE B2 (PES)

66 SQM / 710 SQFT

Block 6 #01-22

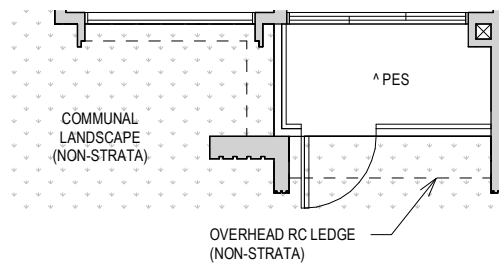


## TYPE B2 (PES)

66 SQM / 710 SQFT

Block 2 #01-06\*

\* MIRROR IMAGE

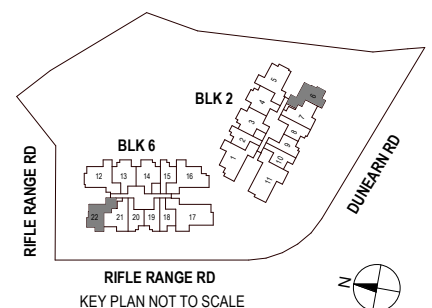


^ The PES shall not be enclosed.

^^ The balcony shall not be enclosed.

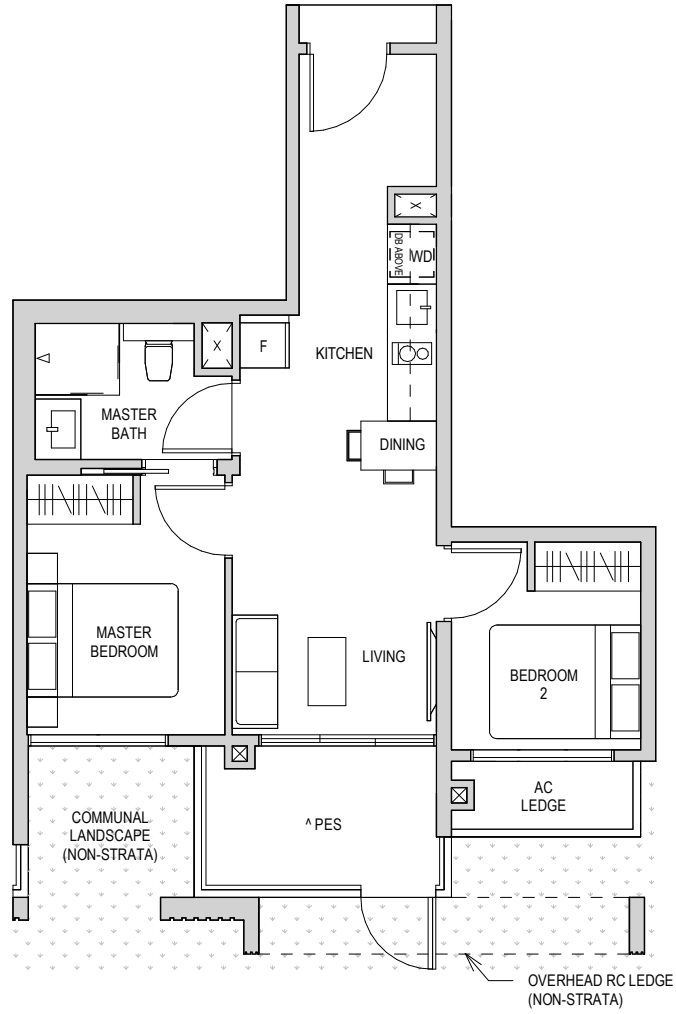
Only approved balcony screens are to be used. For an illustration of the approved balcony screen, please refer to the diagram annexed here to as 'Annexure 1'.

Areas include AC Ledge, Balcony, PES, and Strata Void Area (where applicable). Orientations and facings will differ depending on the unit you are purchasing, please refer to the key plan. Plans are not drawn to scale and subject to change as may be required or approved by the relevant authorities. All areas are estimates only and are subject to final survey.



## TYPE B3 (PES)

58 SQM / 624 SQFT  
Block 2 #01-10

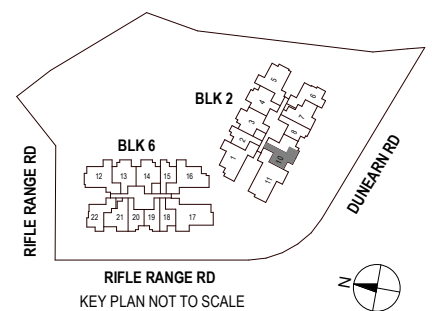


^ The PES shall not be enclosed.

^^ The balcony shall not be enclosed.

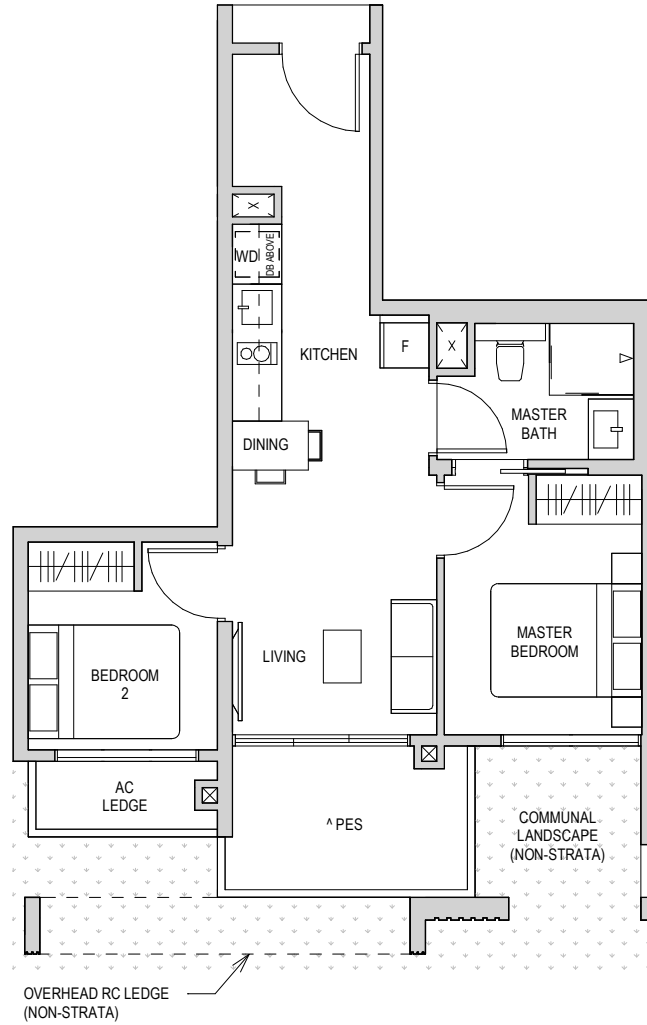
Only approved balcony screens are to be used. For an illustration of the approved balcony screen, please refer to the diagram annexed here to as "Annexure 1".

Areas include AC Ledge, Balcony, PES, and Strata Void Area (where applicable). Orientations and facings will differ depending on the unit you are purchasing, please refer to the key plan. Plans are not drawn to scale and subject to change as may be required or approved by the relevant authorities. All areas are estimates only and are subject to final survey.



## TYPE B3 (PES)

58 SQM / 624 SQFT  
Block 6 #01-18

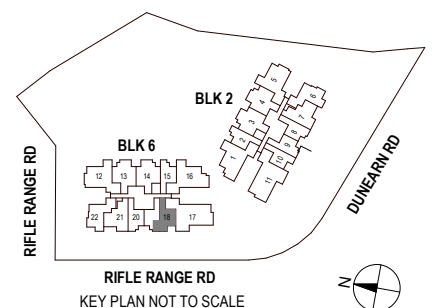


^ The PES shall not be enclosed.

^^ The balcony shall not be enclosed.

Only approved balcony screens are to be used. For an illustration of the approved balcony screen, please refer to the diagram annexed here to as "Annexure 1".

Areas include AC Ledge, Balcony, PES, and Strata Void Area (where applicable). Orientations and facings will differ depending on the unit you are purchasing, please refer to the key plan. Plans are not drawn to scale and subject to change as may be required or approved by the relevant authorities. All areas are estimates only and are subject to final survey.



## TYPE BS1

75 SQM / 807 SQFT

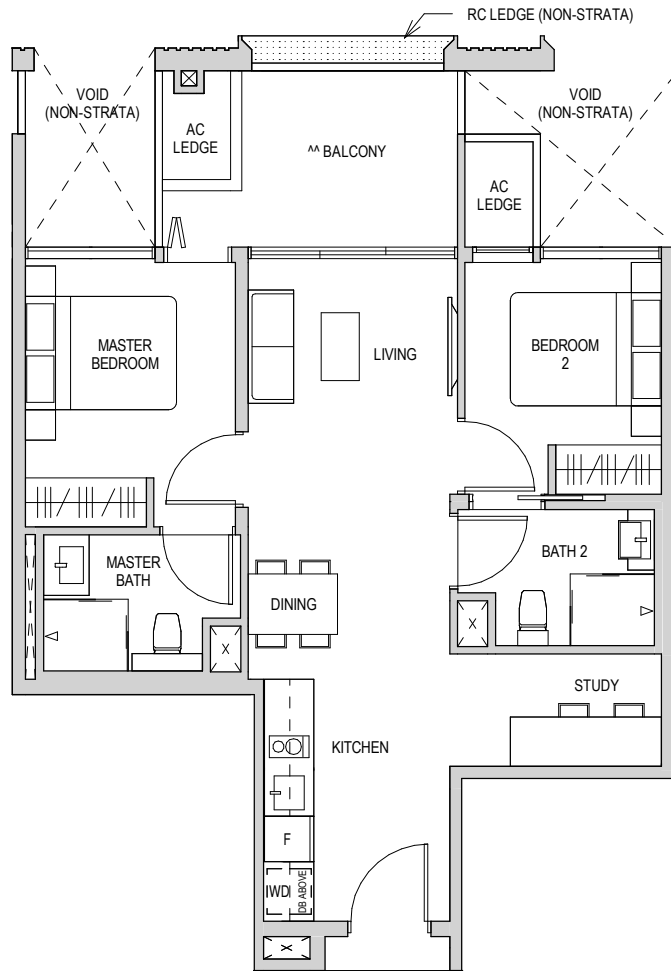
Block 2 #03-03 to #07-03

Block 2 #03-04\* to #07-04\*

Block 6 #03-13 to #07-13

Block 6 #03-14\* to #07-14\*

\* MIRROR IMAGE



## TYPE BS1

75 SQM / 807 SQFT

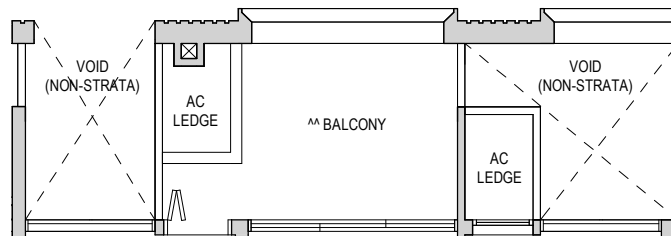
Block 2 #02-03

Block 2 #02-04\*

Block 6 #02-13

Block 6 #02-14\*

\* MIRROR IMAGE



## TYPE BS1 (PES)

74 SQM / 797 SQFT

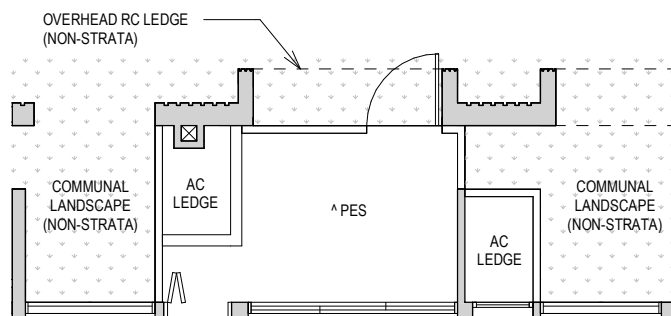
Block 2 #01-03

Block 2 #01-04\*

Block 6 #01-13

Block 6 #01-14\*

\* MIRROR IMAGE

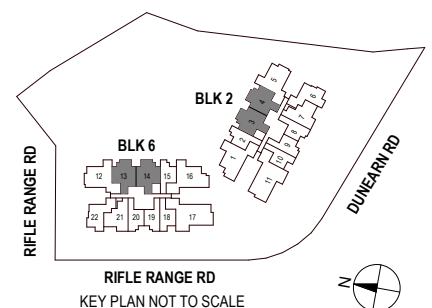


^ The PES shall not be enclosed.

^^ The balcony shall not be enclosed.

Only approved balcony screens are to be used. For an illustration of the approved balcony screen, please refer to the diagram annexed here to as "Annexure 1".

Areas include AC Ledge, Balcony, PES, and Strata Void Area (where applicable). Orientations and facings will differ depending on the unit you are purchasing, please refer to the key plan. Plans are not drawn to scale and subject to change as may be required or approved by the relevant authorities. All areas are estimates only and are subject to final survey.



# TYPE BS1H

90 SQM / 969 SQFT \*\*

\*\* AREA IS INCLUSIVE OF STRATA VOID AREA ABOVE LIVING AND DINING AS PER DOTTED LINE.

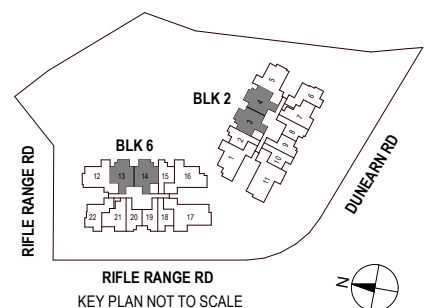
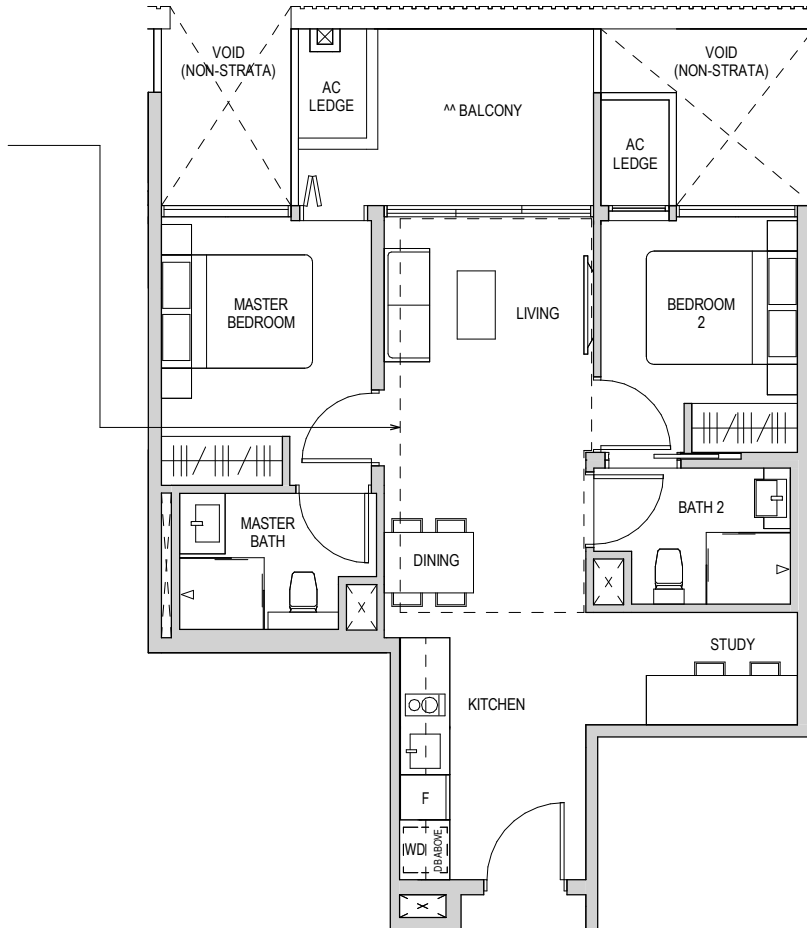
Block 2 #08-03

Block 2 #08-04\*

Block 6 #08-13

Block 6 #08-14\*

\* MIRROR IMAGE



^ The PES shall not be enclosed.

^^ The balcony shall not be enclosed.

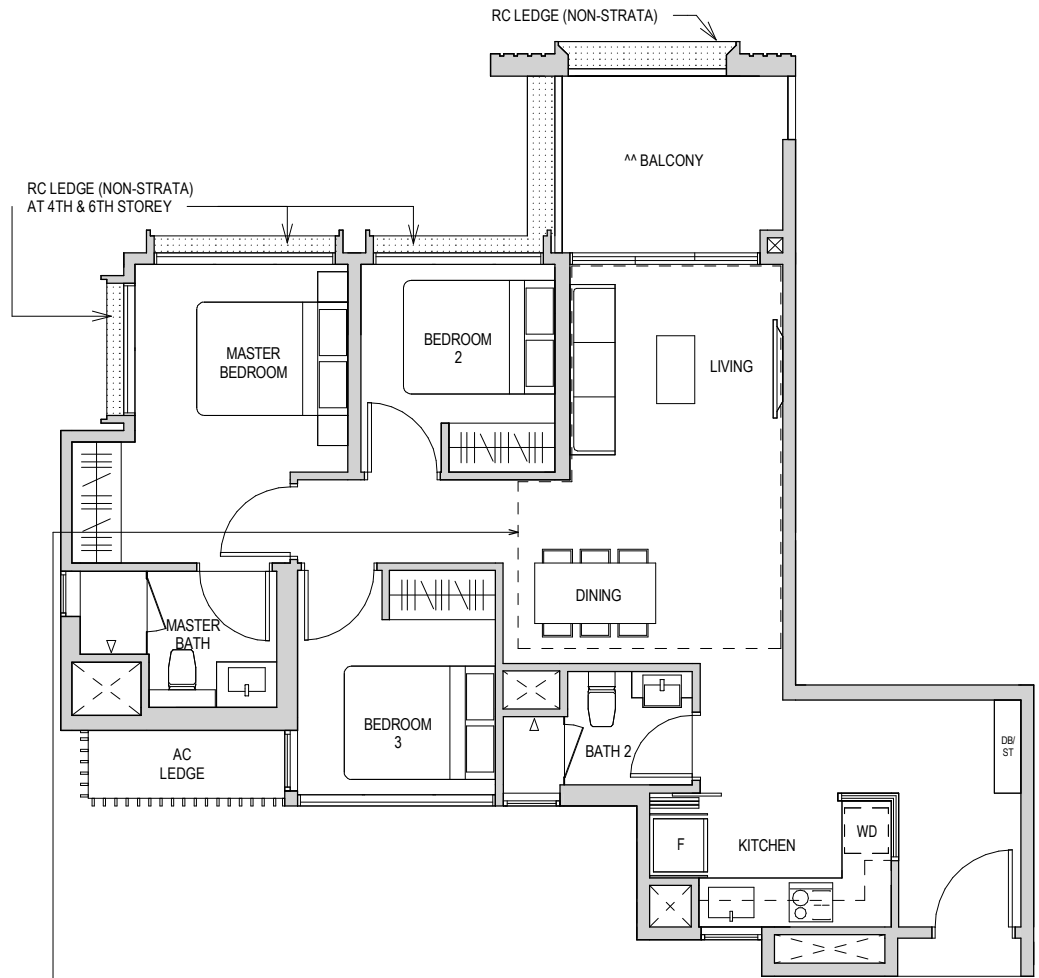
Only approved balcony screens are to be used. For an illustration of the approved balcony screen, please refer to the diagram annexed here to as "Annexure 1".

Areas include AC Ledge, Balcony, PES, and Strata Void Area (where applicable). Orientations and facings will differ depending on the unit you are purchasing, please refer to the key plan. Plans are not drawn to scale and subject to change as may be required or approved by the relevant authorities. All areas are estimates only and are subject to final survey.

## TYPE C1

89 SQM / 958 SQFT  
 Block 2 #03-05\* to #07-05\*  
 Block 6 #03-12 to #07-12

\* MIRROR IMAGE



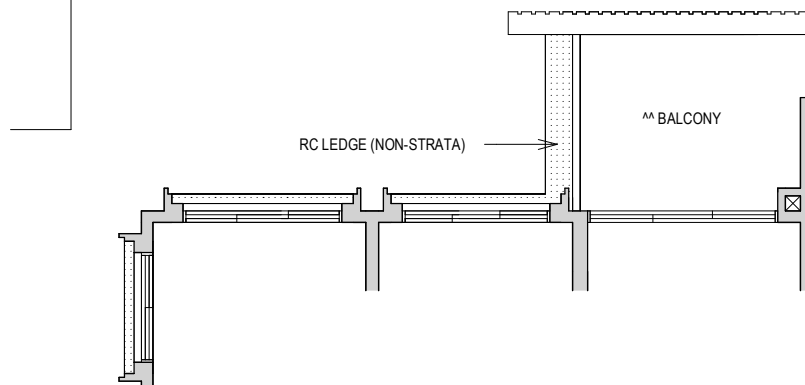
## TYPE C1H

106 SQM / 1141 SQFT \*\*

\*\* AREA IS INCLUSIVE OF STRATA VOID AREA ABOVE LIVING AND DINING AS PER DOTTED LINE.

Block 2 #08-05\*  
 Block 6 #08-12

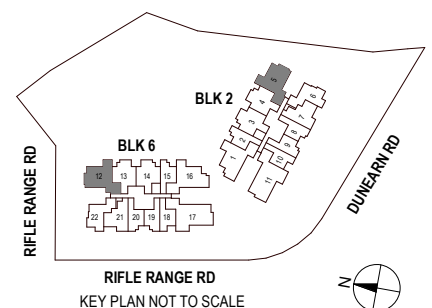
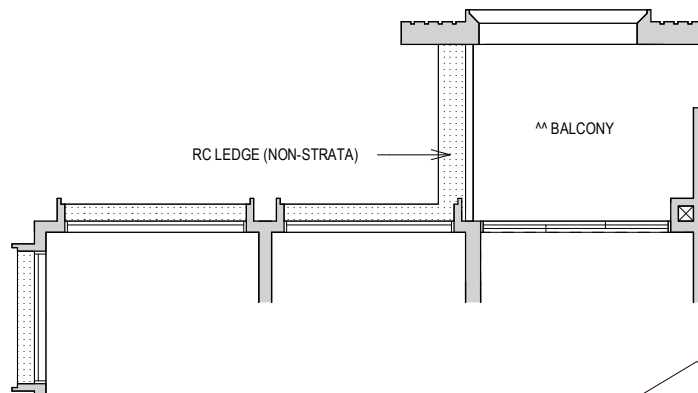
\* MIRROR IMAGE



## TYPE C1

89 SQM / 958 SQFT  
 Block 2 #02-05\*  
 Block 6 #02-12

\* MIRROR IMAGE



^ The PES shall not be enclosed.

^^ The balcony shall not be enclosed.

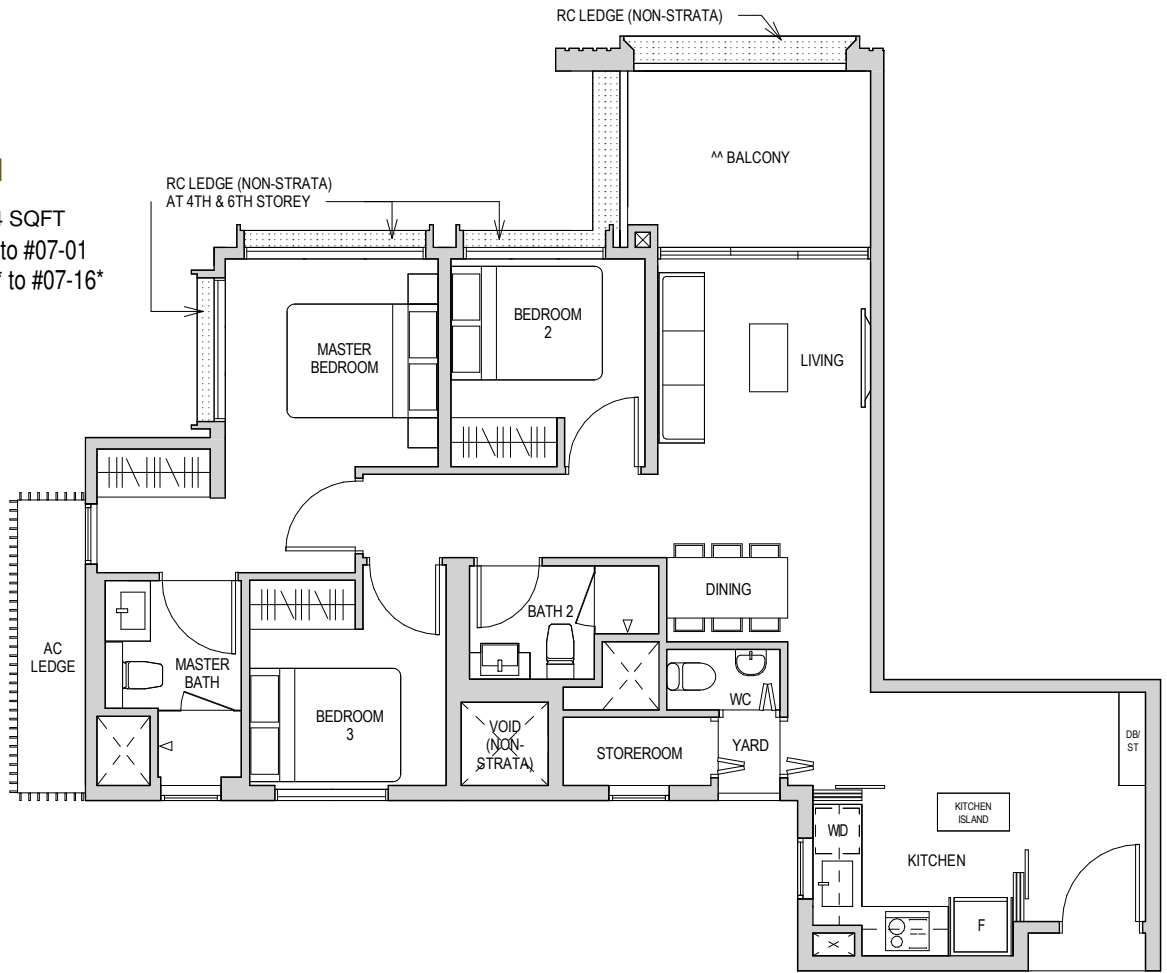
Only approved balcony screens are to be used. For an illustration of the approved balcony screen, please refer to the diagram annexed here to as 'Annexure 1'.

Areas include AC Ledge, Balcony, PES, and Strata Void Area (where applicable). Orientations and facings will differ depending on the unit you are purchasing, please refer to the key plan. Plans are not drawn to scale and subject to change as may be required or approved by the relevant authorities. All areas are estimates only and are subject to final survey.

### TYPE CP1

97 SQM / 1044 SQFT  
 Block 2 #03-01 to #07-01  
 Block 6 #03-16\* to #07-16\*

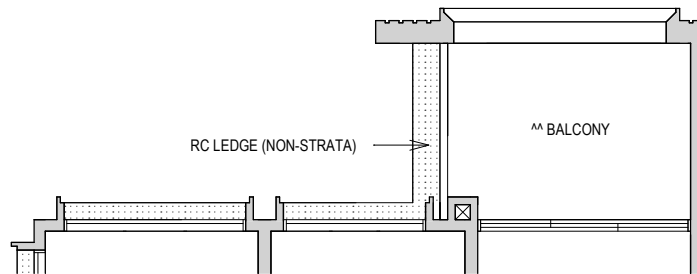
\* MIRROR IMAGE



### TYPE CP1

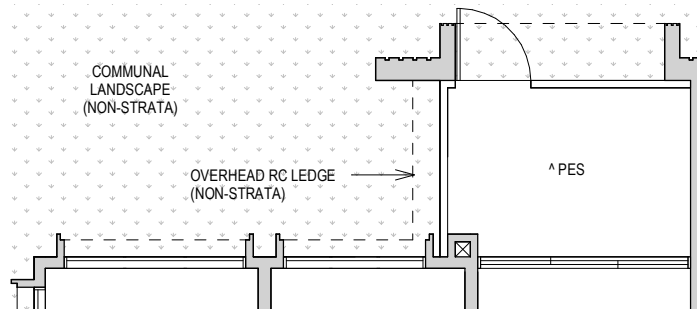
97 SQM / 1044 SQFT  
 Block 2 #02-01  
 Block 6 #02-16\*

\* MIRROR IMAGE



### TYPE CP1 (PES)

96 SQM / 1033 SQFT  
 Block 2 #01-01

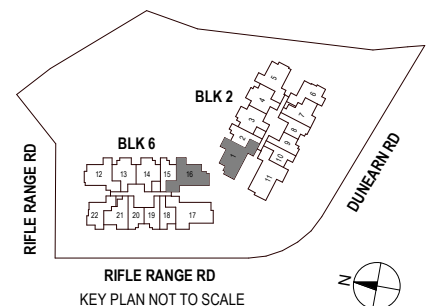


^ The PES shall not be enclosed.

^^ The balcony shall not be enclosed.

Only approved balcony screens are to be used. For an illustration of the approved balcony screen, please refer to the diagram annexed here to as 'Annexure 1'.

Areas include AC Ledge, Balcony, PES, and Strata Void Area (where applicable). Orientations and facings will differ depending on the unit you are purchasing, please refer to the key plan. Plans are not drawn to scale and subject to change as may be required or approved by the relevant authorities. All areas are estimates only and are subject to final survey.





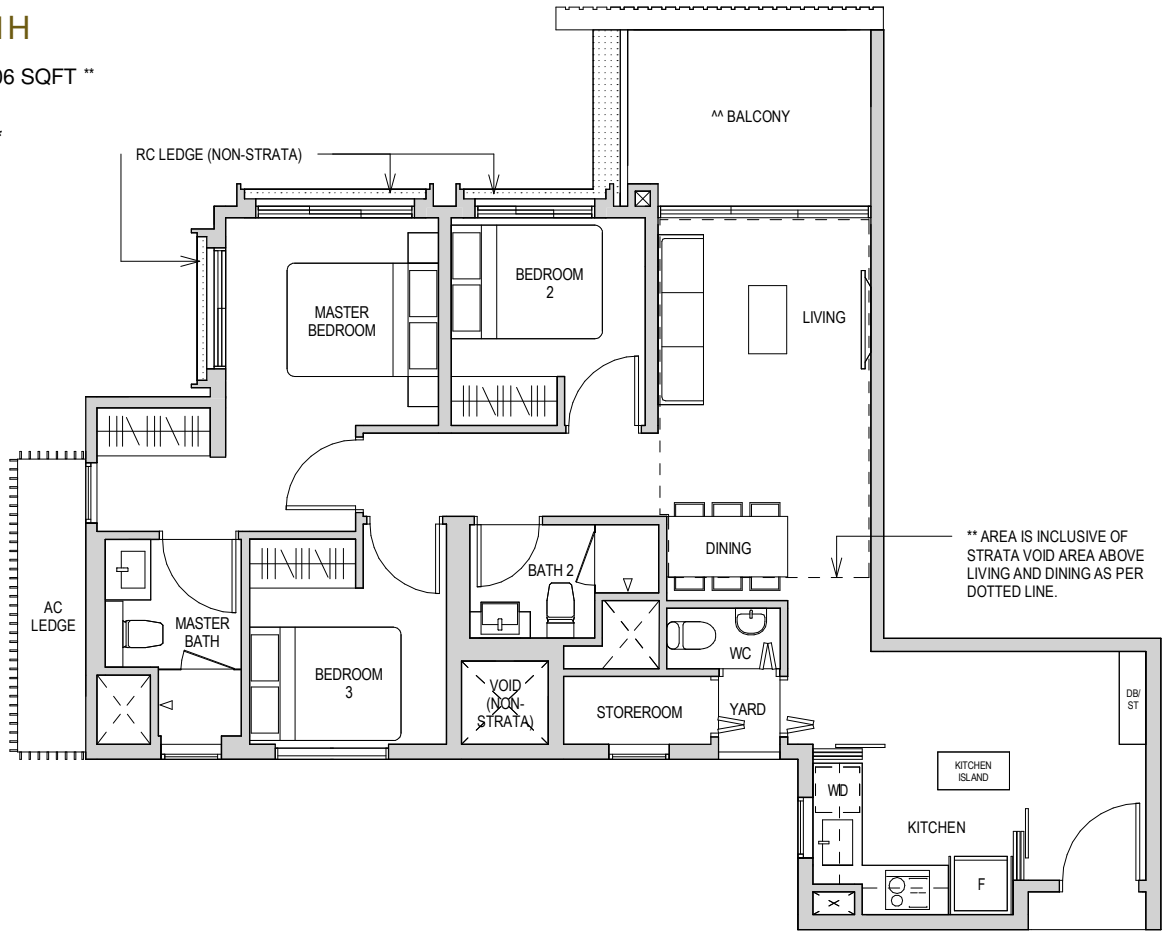
# TYPE CP1H

112 SQM / 1206 SQFT \*\*

Block 2 #08-01

Block 6 #08-16\*

\* MIRROR IMAGE

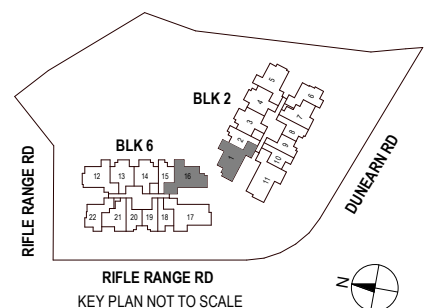


^ The PES shall not be enclosed.

^A The balcony shall not be enclosed.

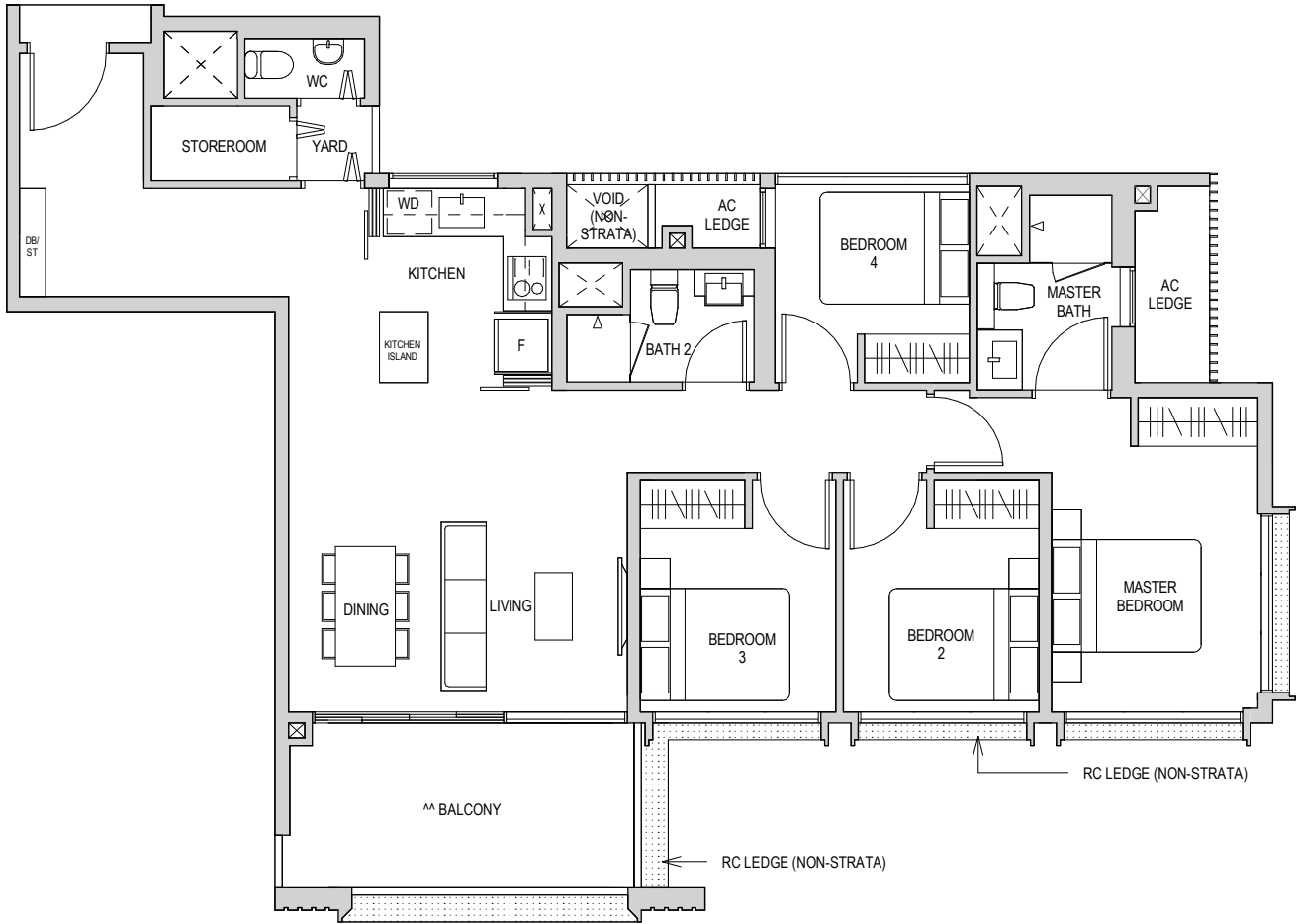
Only approved balcony screens are to be used. For an illustration of the approved balcony screen, please refer to the diagram annexed here to as 'Annexure 1'.

Areas include AC Ledge, Balcony, PES, and Strata Void Area (where applicable). Orientations and facings will differ depending on the unit you are purchasing, please refer to the key plan. Plans are not drawn to scale and subject to change as may be required or approved by the relevant authorities. All areas are estimates only and are subject to final survey.



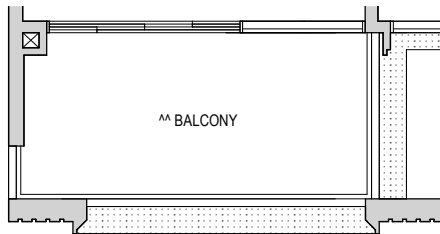
## TYPE D1

120 SQM / 1292 SQFT  
Block 6 #03-17 to #07-17



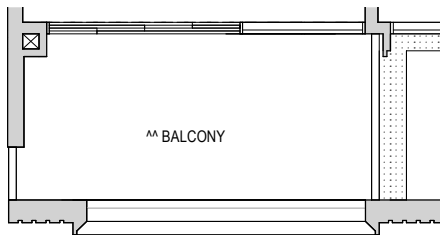
## TYPE D1

120 SQM / 1292 SQFT  
Block 2 #03-11\* to #07-11\*  
\* MIRROR IMAGE



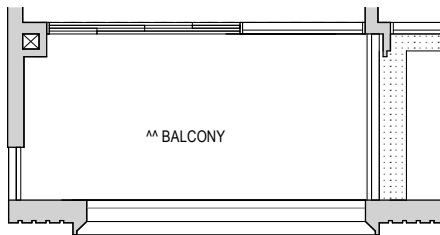
## TYPE D1

120 SQM / 1292 SQFT  
Block 6 #02-17



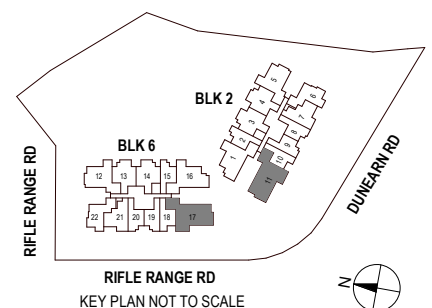
## TYPE D1

120 SQM / 1292 SQFT  
Block 2 #02-11\*  
\* MIRROR IMAGE



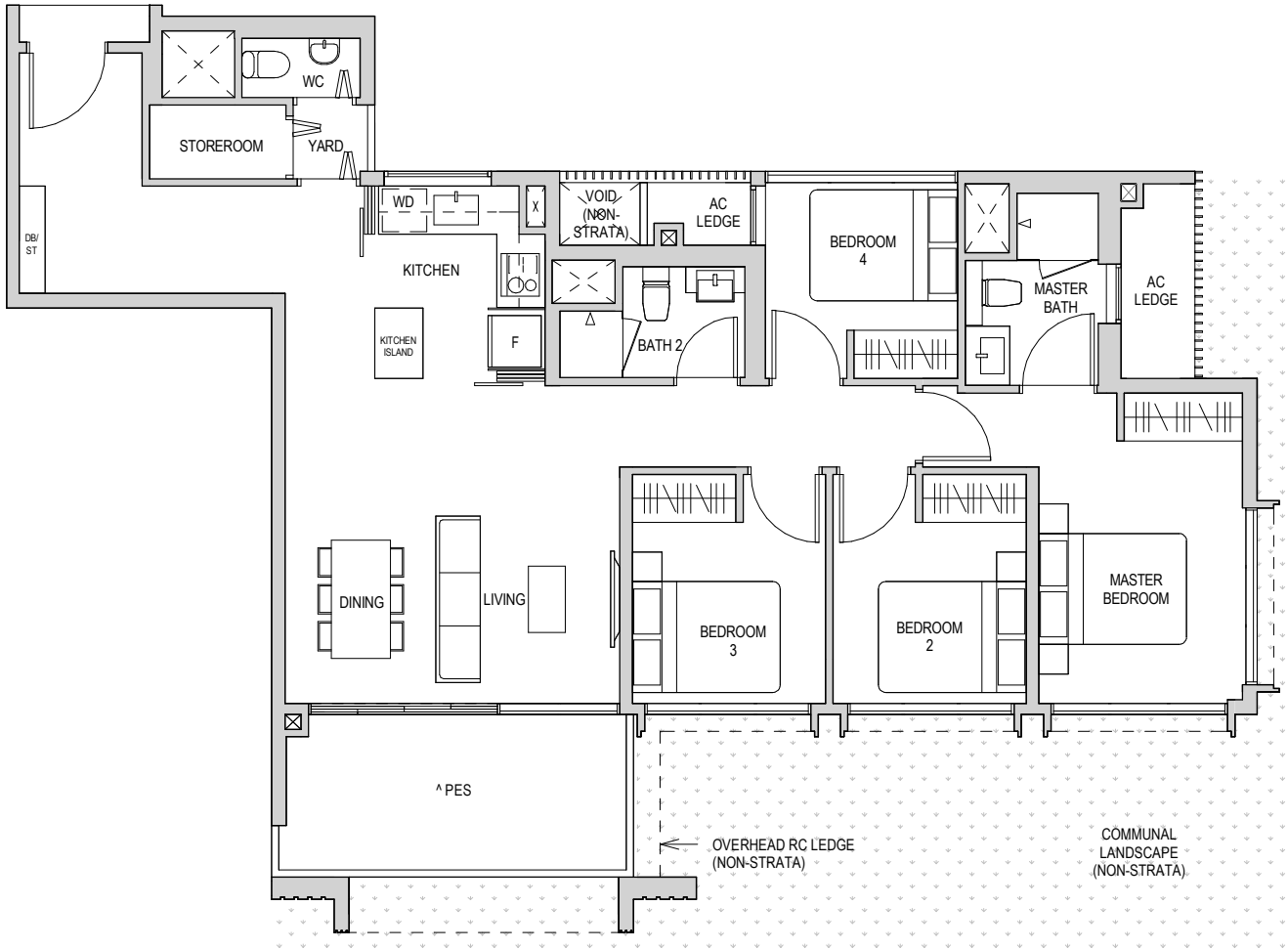
^ The PES shall not be enclosed.  
^^ The balcony shall not be enclosed.  
Only approved balcony screens are to be used. For an illustration of the approved balcony screen, please refer to the diagram annexed here to as 'Annexure 1'.

Areas include AC Ledge, Balcony, PES, and Strata Void Area (where applicable). Orientations and facings will differ depending on the unit you are purchasing, please refer to the key plan. Plans are not drawn to scale and subject to change as may be required or approved by the relevant authorities. All areas are estimates only and are subject to final survey.



## TYPE D1 (PES)

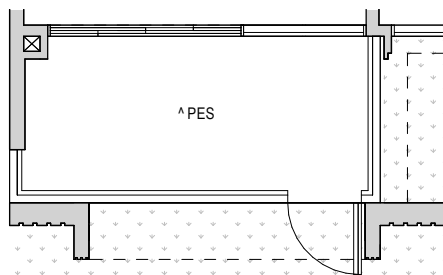
119 SQM / 1281 SQFT  
Block 6 #01-17



## TYPE D1 (PES)

119 SQM / 1281 SQFT  
Block 2 #01-11\*

\* MIRROR IMAGE

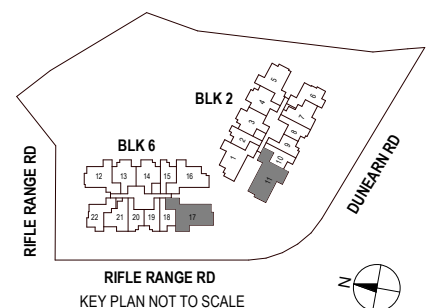


^ The PES shall not be enclosed.

^^ The balcony shall not be enclosed.

Only approved balcony screens are to be used. For an illustration of the approved balcony screen, please refer to the diagram annexed here to as "Annexure 1".

Areas include AC Ledge, Balcony, PES, and Strata Void Area (where applicable). Orientations and facings will differ depending on the unit you are purchasing, please refer to the key plan. Plans are not drawn to scale and subject to change as may be required or approved by the relevant authorities. All areas are estimates only and are subject to final survey.

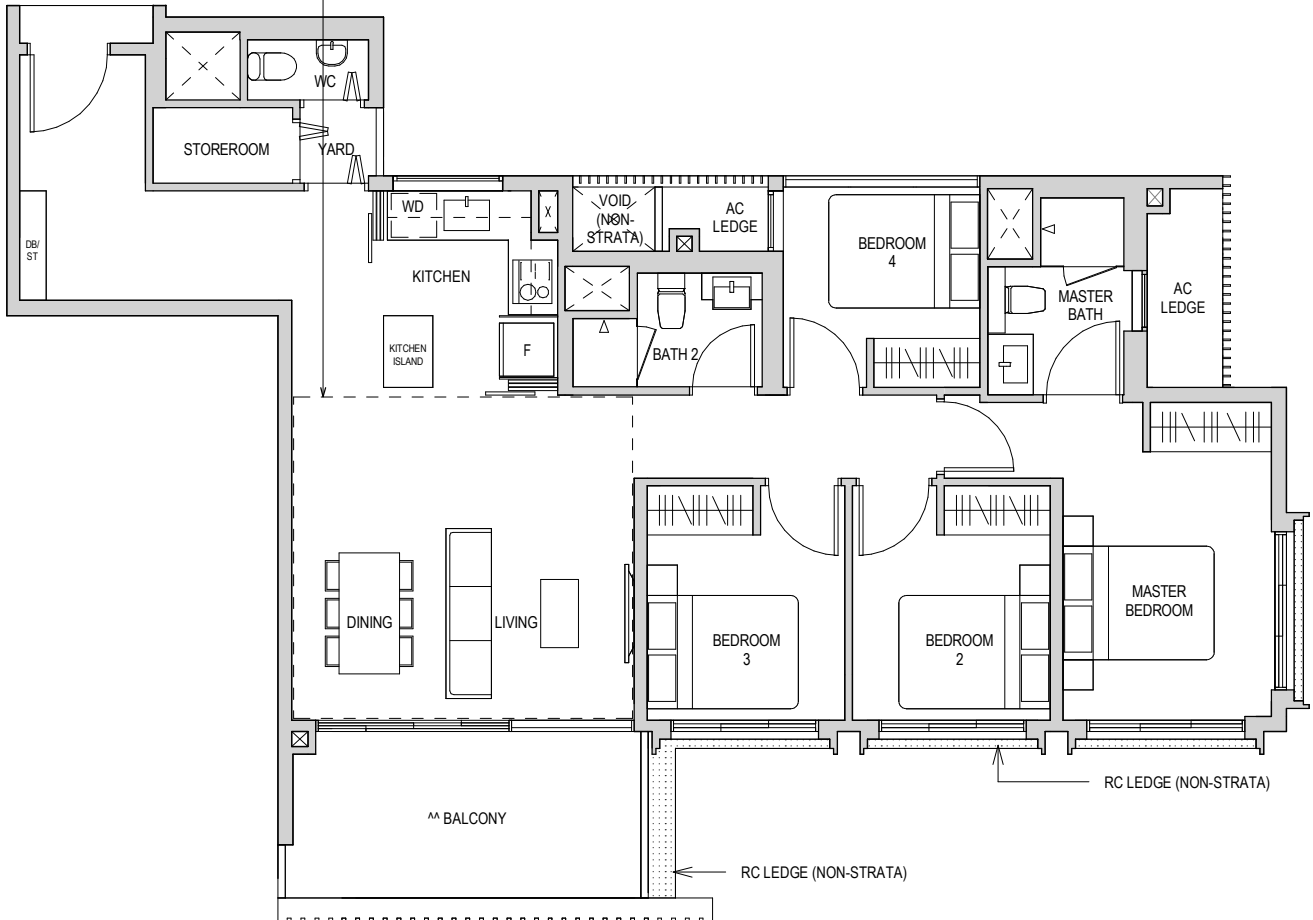


## TYPE D1H

141 SQM / 1518 SQFT \*\*

\*\* AREA IS INCLUSIVE OF STRATA VOID AREA ABOVE LIVING AND DINING AS PER DOTTED LINE.

Block 6 #08-17



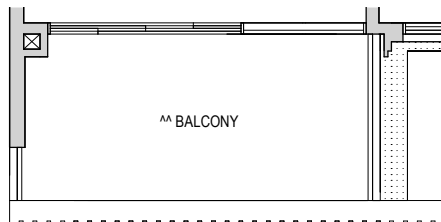
## TYPE D1H

141 SQM / 1518 SQFT \*\*

\*\* AREA IS INCLUSIVE OF STRATA VOID AREA ABOVE LIVING AND DINING AS PER DOTTED LINE.

Block 2 #08-11\*

\* MIRROR IMAGE



^ The PES shall not be enclosed.

^^ The balcony shall not be enclosed.

Only approved balcony screens are to be used. For an illustration of the approved balcony screen, please refer to the diagram annexed here to as 'Annexure 1'.

Areas include AC Ledge, Balcony, PES, and Strata Void Area (where applicable). Orientations and facings will differ depending on the unit you are purchasing, please refer to the key plan. Plans are not drawn to scale and subject to change as may be required or approved by the relevant authorities. All areas are estimates only and are subject to final survey.

