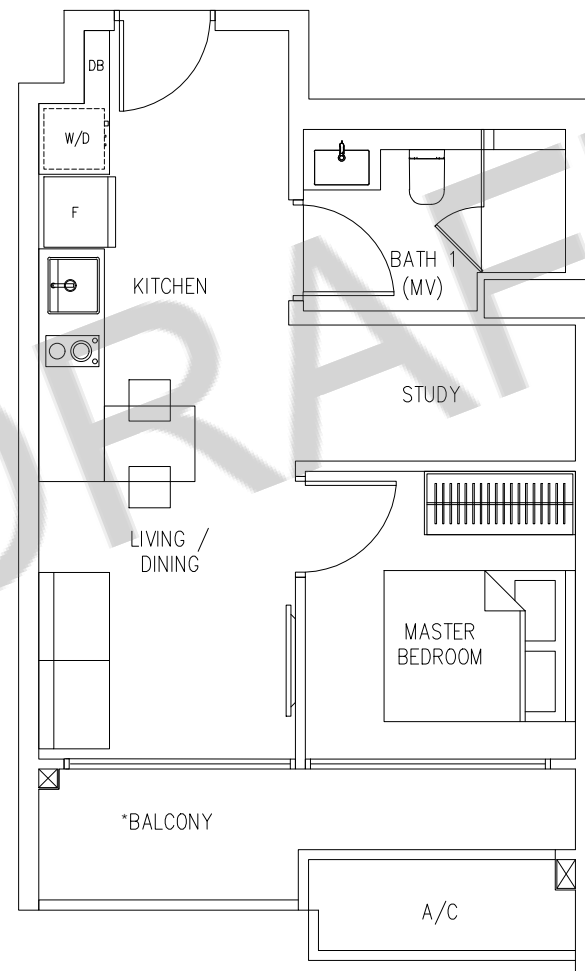


# 1 BEDROOM + STUDY

## TYPE A1

Area 47 sqm

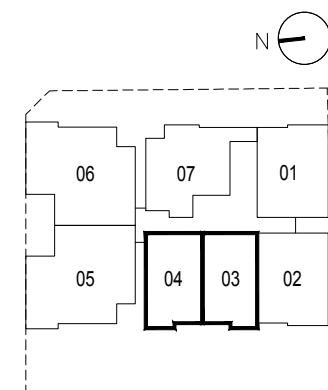
#02-03 TO #05-03  
^#02-04 TO #05-04



All plans are subjected to amendments as approved by the relevant authorities. Floor areas are approximate measurements and are subject to final survey. Plans are not drawn to scale and do not form part of the contract.

\*The balcony shall not be enclosed. Only approved balcony screens are to be used. For illustration of the approved balcony screen, please refer to page \_\_ of this brochure.

^ Mirror unit

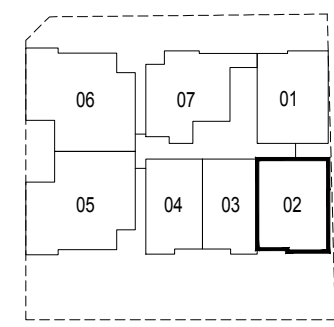
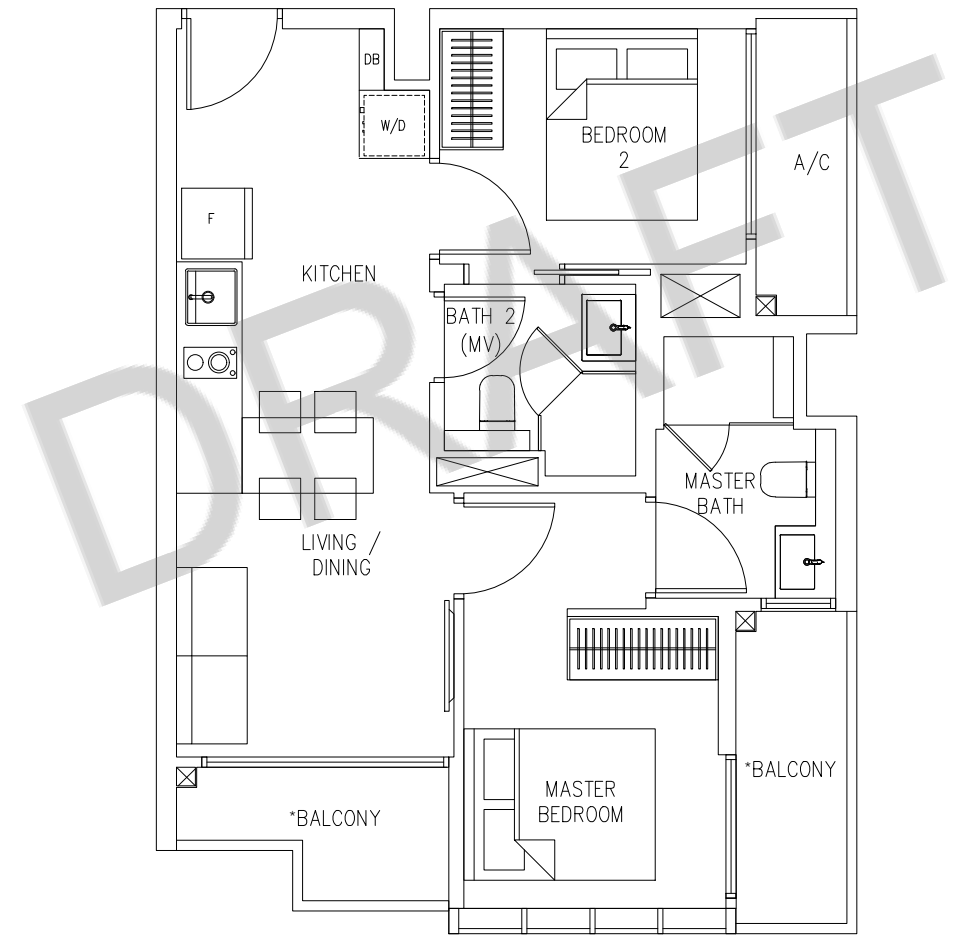


# 2 BEDROOM ENSUITE

## TYPE B1

Area 58 sqm

#02-02 TO #06-02



All plans are subjected to amendments as approved by the relevant authorities. Floor areas are approximate measurements and are subject to final survey. Plans are not drawn to scale and do not form part of the contract.

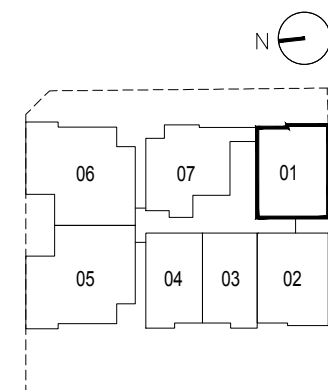
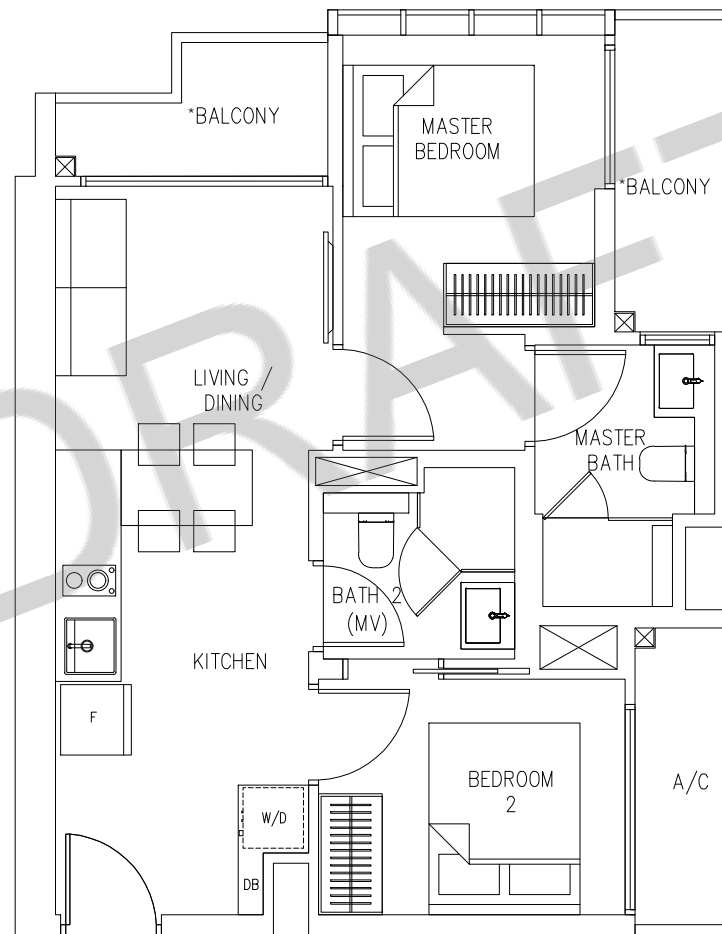
\*The balcony shall not be enclosed. Only approved balcony screens are to be used. For illustration of the approved balcony screen, please refer to page \_\_ of this brochure.

# 2 BEDROOM ENSUITE

## TYPE B2

Area 59 sqm

#02-01 TO #06-01



All plans are subjected to amendments as approved by the relevant authorities. Floor areas are approximate measurements and are subject to final survey. Plans are not drawn to scale and do not form part of the contract.

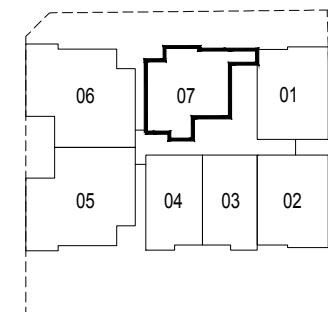
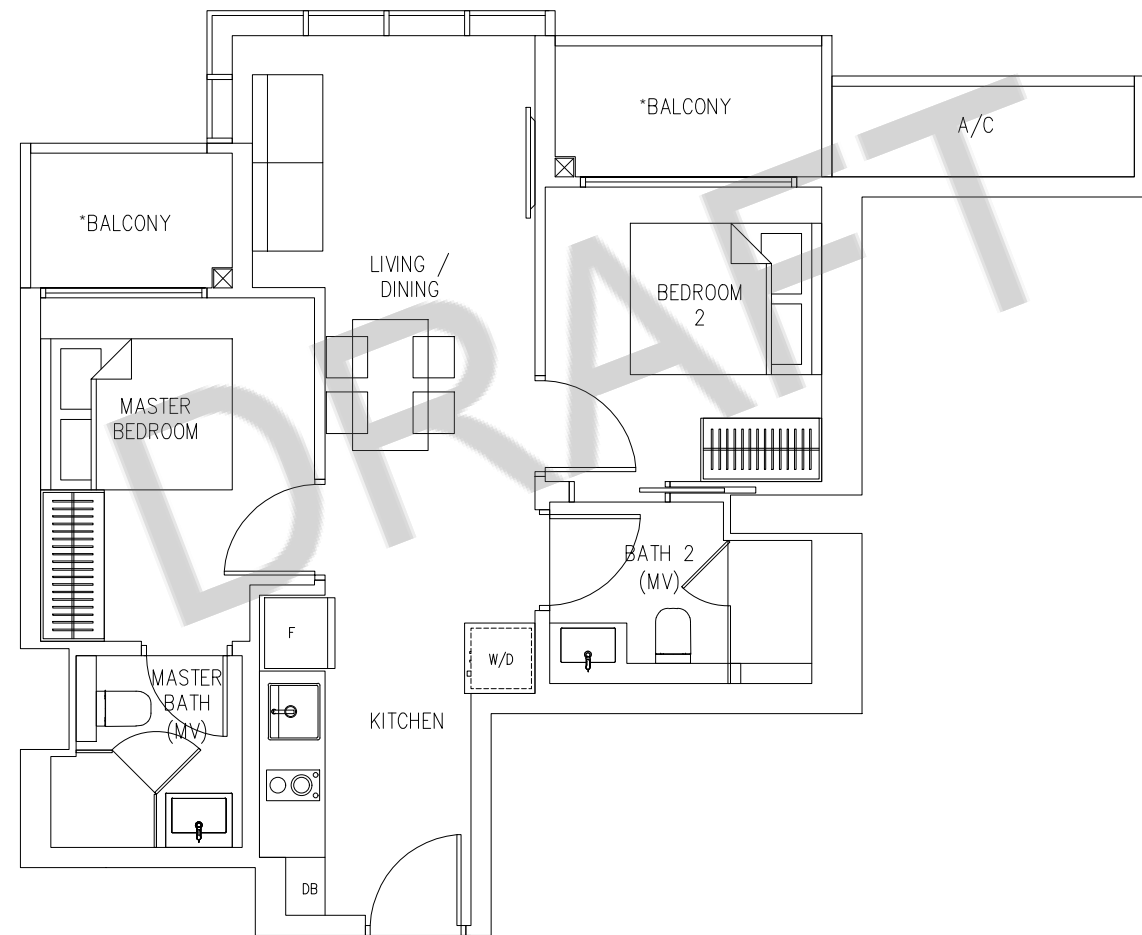
\*The balcony shall not be enclosed. Only approved balcony screens are to be used. For illustration of the approved balcony screen, please refer to page \_\_ of this brochure.

# 2 BEDROOM ENSUITE

## TYPE B3

Area 63 sqm

#02-07 TO #06-07



All plans are subjected to amendments as approved by the relevant authorities. Floor areas are approximate measurements and are subject to final survey. Plans are not drawn to scale and do not form part of the contract.

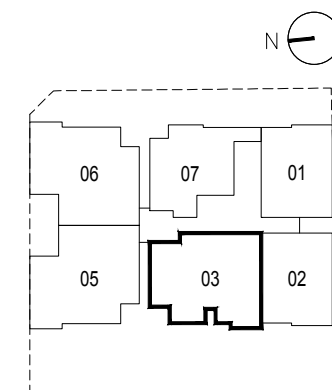
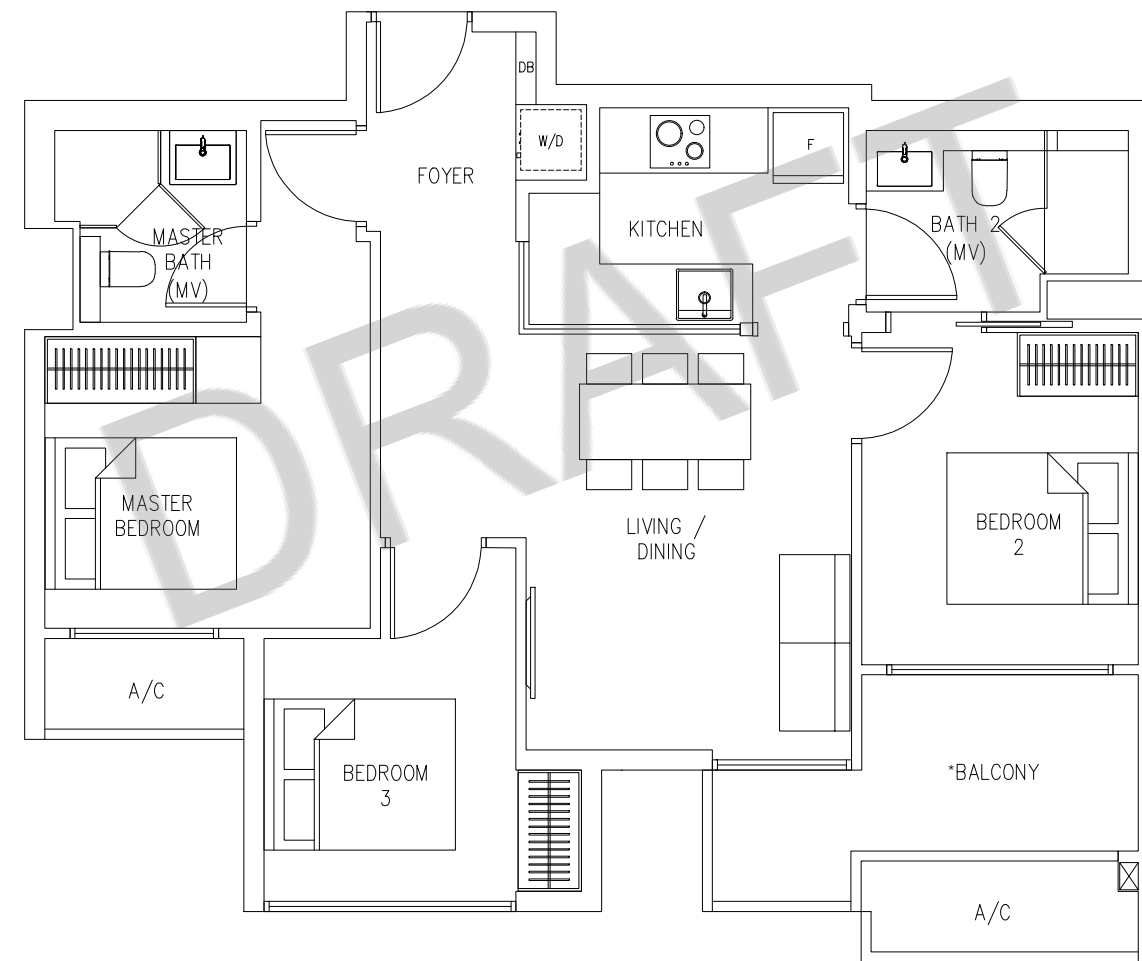
\*The balcony shall not be enclosed. Only approved balcony screens are to be used. For illustration of the approved balcony screen, please refer to page \_\_ of this brochure.

# 3 BEDROOM

## TYPE C1

Area 85 sqm

#06-03



All plans are subjected to amendments as approved by the relevant authorities. Floor areas are approximate measurements and are subject to final survey. Plans are not drawn to scale and do not form part of the contract.

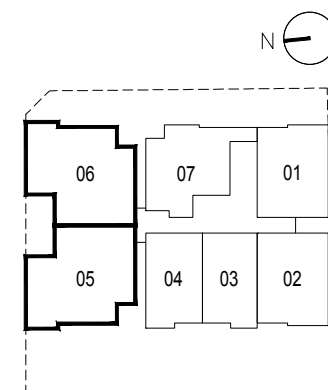
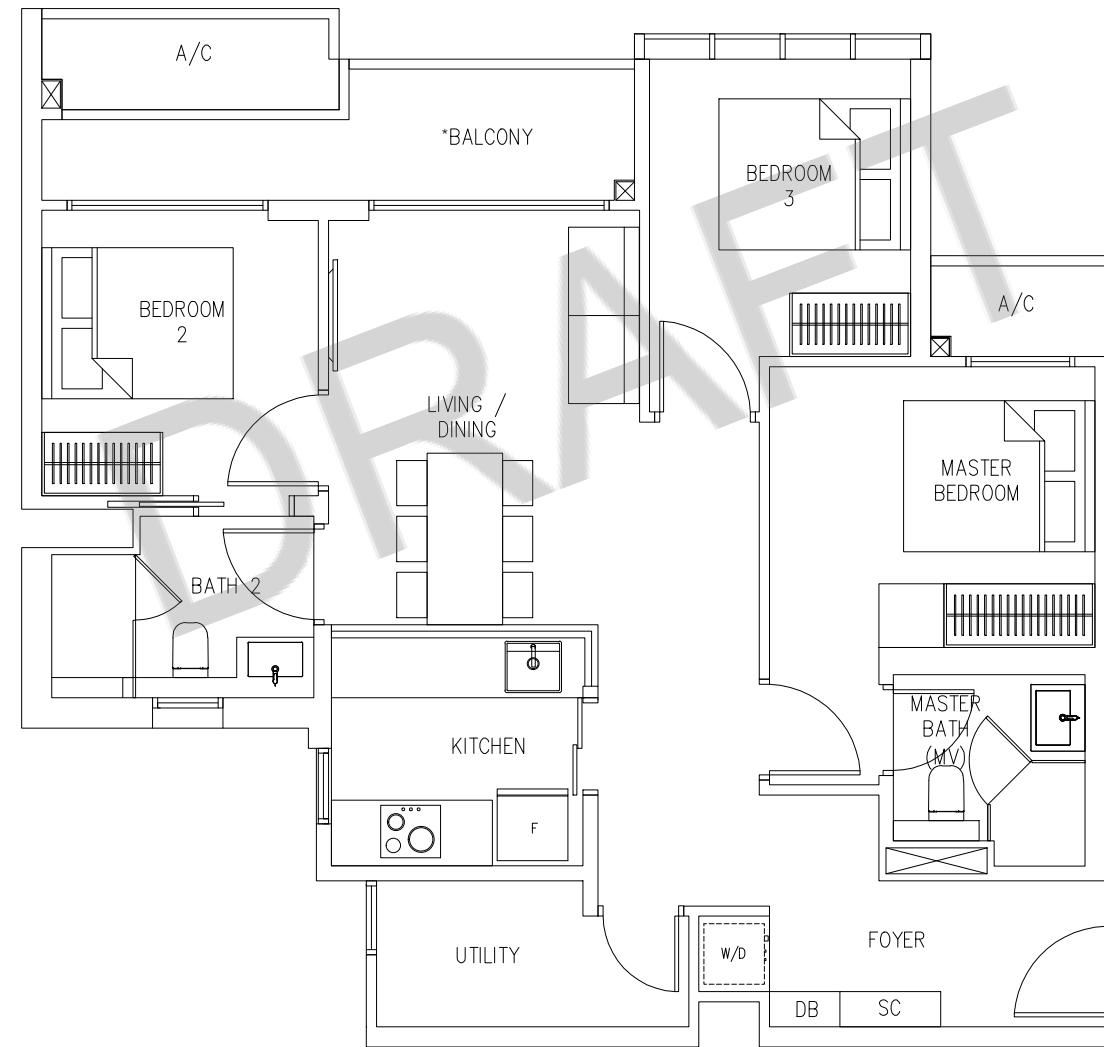
\*The balcony shall not be enclosed. Only approved balcony screens are to be used. For illustration of the approved balcony screen, please refer to page \_\_ of this brochure.

# 3 BEDROOM + UTILITY

## TYPE C2

Area 91 sqm

^ #02-05 TO #05-05  
#02-06 TO #05-06



All plans are subjected to amendments as approved by the relevant authorities. Floor areas are approximate measurements and are subject to final survey. Plans are not drawn to scale and do not form part of the contract.

\*The balcony shall not be enclosed. Only approved balcony screens are to be used. For illustration of the approved balcony screen, please refer to page \_\_ of this brochure.

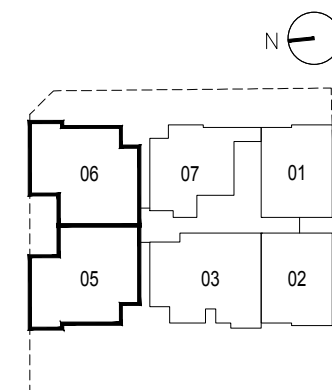
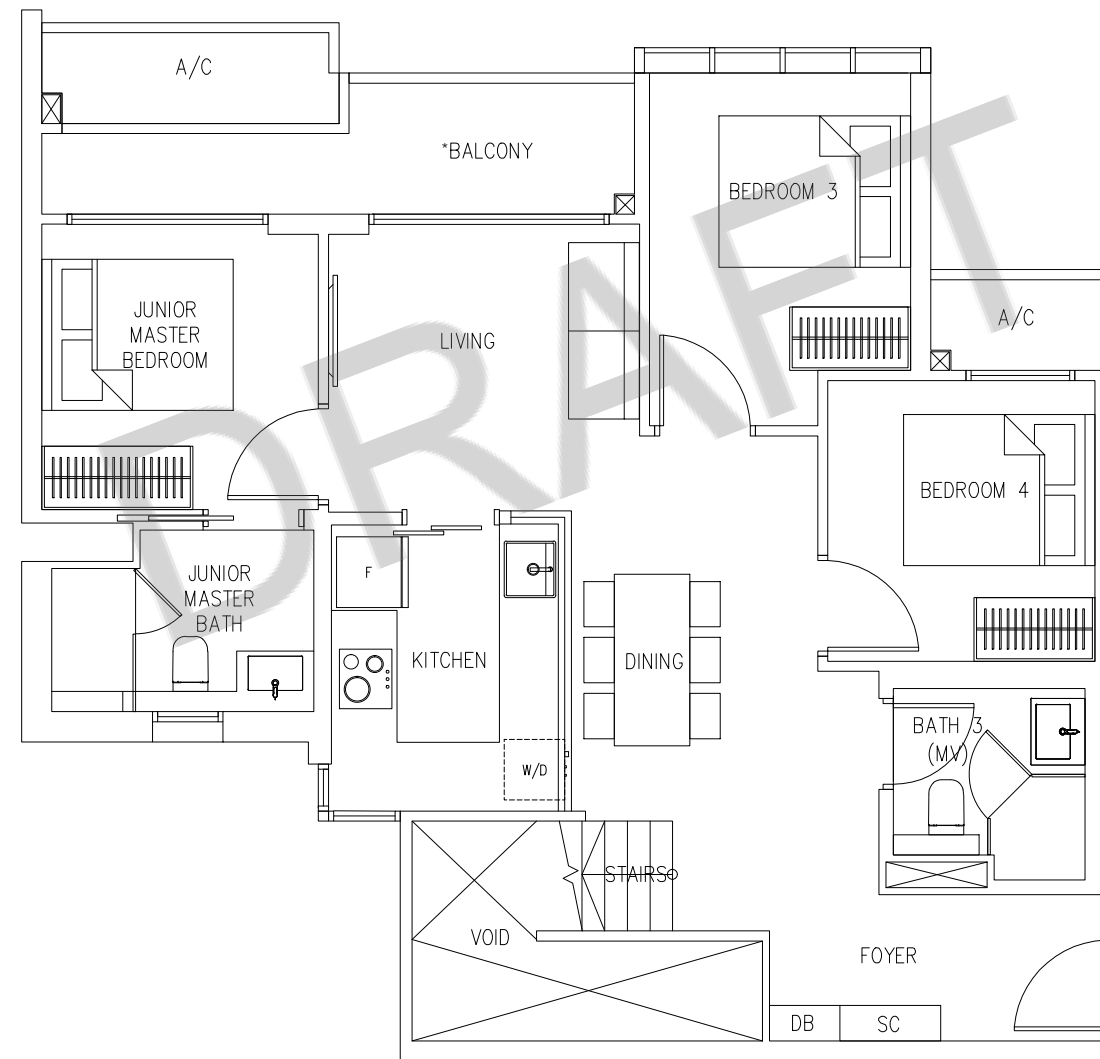
^ Mirror unit

# 4 BEDROOM PENTHOUSE

## TYPE D

Area 124 sqm

^ #06-05  
#06-06



All plans are subjected to amendments as approved by the relevant authorities. Floor areas are approximate measurements and are subject to final survey. Plans are not drawn to scale and do not form part of the contract.

\*The balcony shall not be enclosed. Only approved balcony screens are to be used. For illustration of the approved balcony screen, please refer to page \_\_ of this brochure.

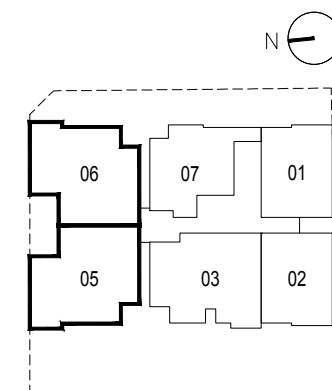
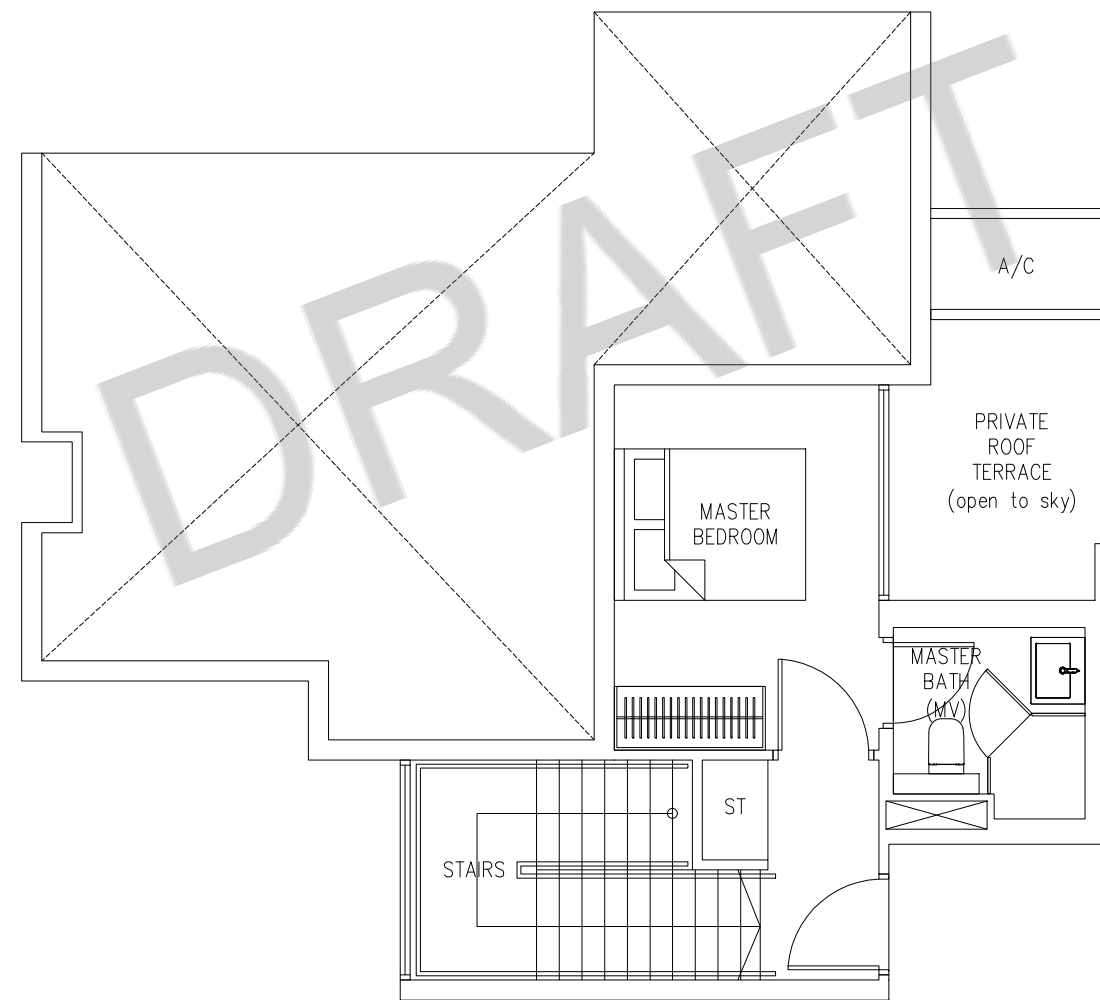
^ Mirror unit

# 4 BEDROOM PENTHOUSE

## TYPE D

Area 124 sqm

^ #06-05  
#06-06



All plans are subjected to amendments as approved by the relevant authorities. Floor areas are approximate measurements and are subject to final survey. Plans are not drawn to scale and do not form part of the contract.

\*The balcony shall not be enclosed. Only approved balcony screens are to be used. For illustration of the approved balcony screen, please refer to page \_\_ of this brochure.

^ Mirror unit