





THE THINGS THAT YOU LOVE  
THE THINGS THAT YOU ARE  
AND THE THINGS YOU NEVER WANT TO LOSE

PASS IT ON





## HIGHLY DESIRABLE ADDRESS

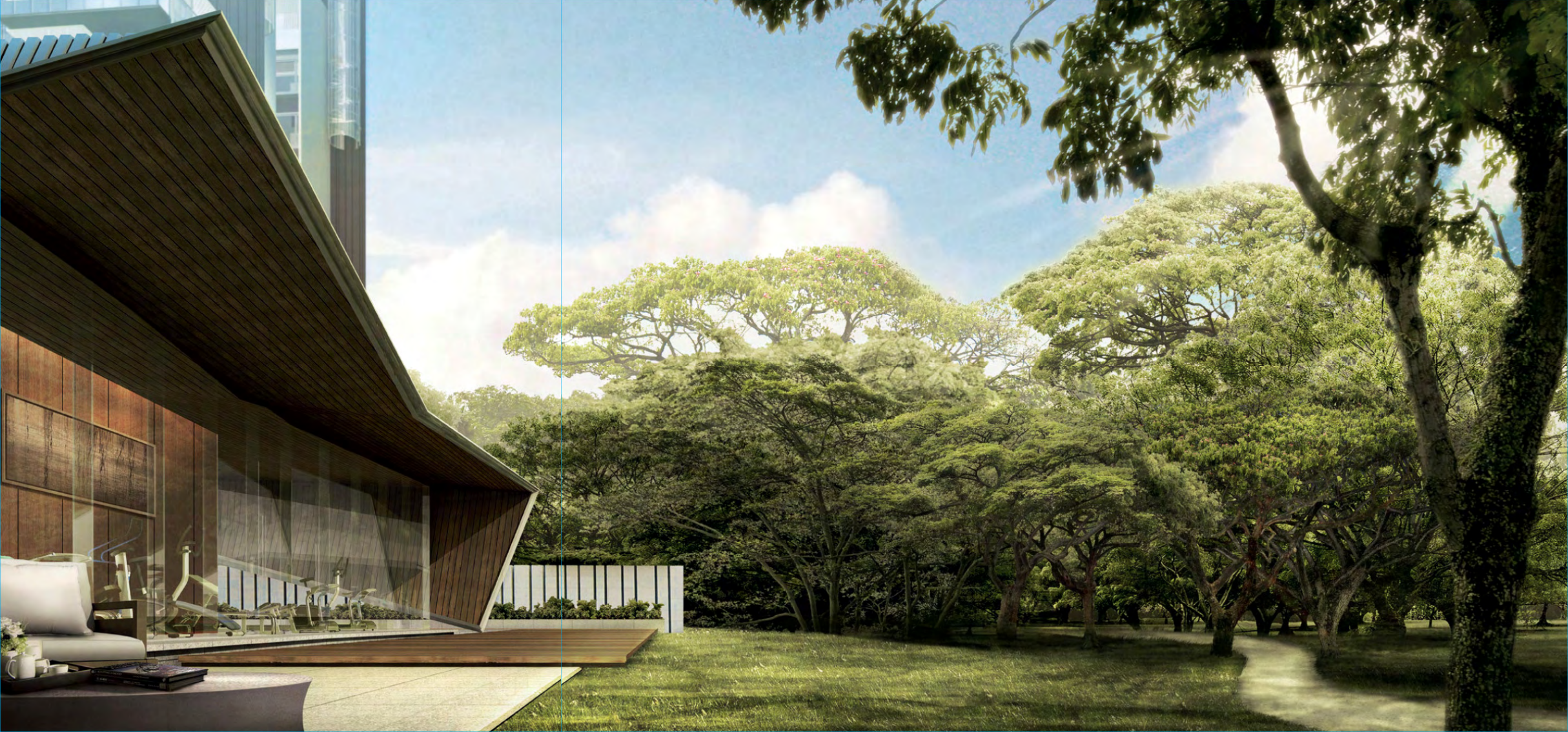
Living within the Good Class Bungalow enclave, the prime address of District 10 is yours to call home. Best of all, its freehold status leaves a lasting legacy for generations to enjoy.





**THE WORLD AT YOUR FEET**  
 Explore the vibrancy of Orchard Road, Marina Bay and Holland Village, or unwind at the tranquil Botanic Gardens. All life's pleasures are within your reach.









LUSH PLOTS HIDDEN, AWAIT DISCOVERY.  
Come home to an expanse of lush greenery, where  
manicured foliage paves the way to a 200m nature trail.







**UNWIND AT YOUR VERY OWN TROPICAL RESORT**

Splash into a 50m lap pool or lounge at the bespoke poolside cabanas. Work out at the state-of-the-art gym, entertain in style with fully equipped gourmet kitchen, mingle at The Club, all whilst surrounded by nature, without ever leaving your home.









A HOME AS GRAND AS YOUR DREAMS  
Thoughtful interplay of design and form make for  
exquisite proportions – lofty double-volume living space,  
generous private balconies and magnificent views.



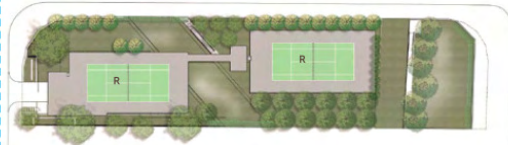
MOMENTS. MEMORIES. TRADITIONS.  
Make them for generations to come. Home is  
where traditions are created for an eternity.





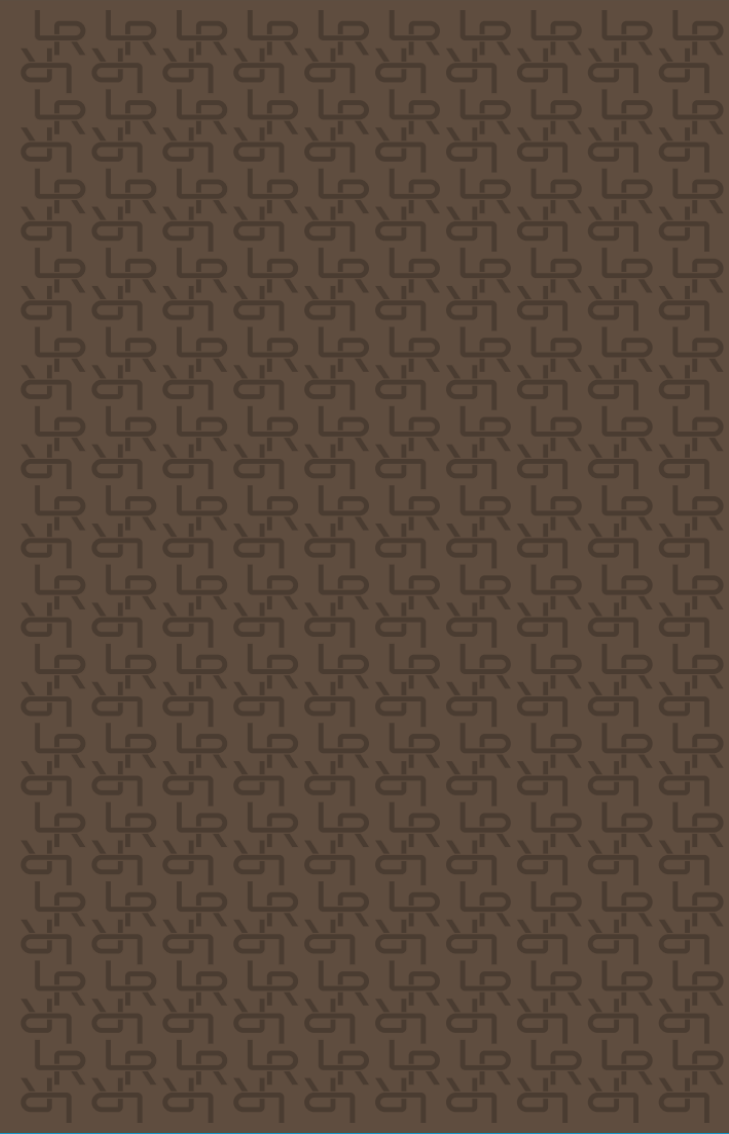






- A ARRIVAL COURT
- B TREE AVENUE
- C KIDS' POOL
- D LAP POOL
- E JACUZZI
- F POOL CABANAS
- G THE DINING LOUNGE
- H THE CLUB
- I THE GYM
- J REFLECTIVE POOL
- K FLOATING PAVILION
- L PAVILION
- M DISCOVERY PLAYGROUND
- N THE GRILL
- O FITNESS CORNER
- P THE FOREST WALK
- Q RECREATIONAL GARDEN
- R TENNIS COURTS
- S WATER COURT
- T WATER WALL
- U TREE GROVE
- V SIDE GATE

SITE PLAN



# AN UNPARALLELED PARTNERSHIP

## SCDA



CHAN SOO KHIAN

SCDA ARCHITECTS is a multi-disciplinary architectural practice established in 1995. Principal, Chan Soo Khian was the recipient of the inaugural President's Design Award, Singapore Designer of the Year and is part of the Panel of Designers for Poliform in Milan. He was also the recipient of the SIA-Getz Architecture Prize for Emergent Architecture in Asia, 2006. The practice was recognized as one of the Design Vanguard firms, redefining the Face of Architecture by Architectural Record USA. SCDA was awarded the Royal Institute of British Architects Worldwide Award for the Lincoln Modern in 2003, and was also the recipient of nine Chicago Athenaeum International Architecture Awards.

SCDA's designs strive for tranquility and calmness qualified by space, light and structural order, architectural expressions are distilled to capture the spiritual essence of 'place'. Its architecture and interiors are inspired by the cultural and climatic nuances of its context, integrating landscape, water features and blurring the distinction between interior and exterior. Spaces are often characterized by lush gardens, water courts and air wells, engendering a sensuous engagement with the elements. Projects display sensitivity to the environment and the inherent beauty of natural materials expressed through clarity in construction details and elemental architectural expression.



GuocoLand Limited is the real estate arm of the Hong Leong Group Malaysia. The major shareholder of GuocoLand Limited is Guoco Group Limited, which is listed on The Stock Exchange of Hong Kong Limited and is a subsidiary of the Hong Leong Group Malaysia.

GuocoLand Limited is a major listed property company in Singapore with core businesses in property development, property investment, hotel operations, property management and related activities in its geographical markets of Singapore, China, Malaysia and Vietnam.

The Company is a well-established developer, having successfully developed and sold 30 residential projects in Singapore yielding more than 8,400 apartments and homes over the last 21 years.

