

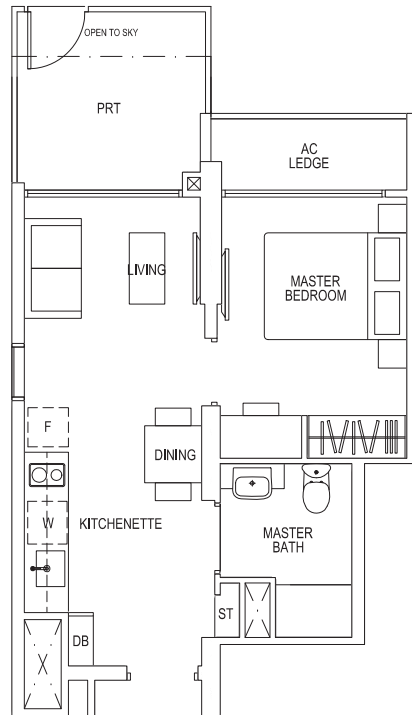
1 - BEDROOM

Type A1-P

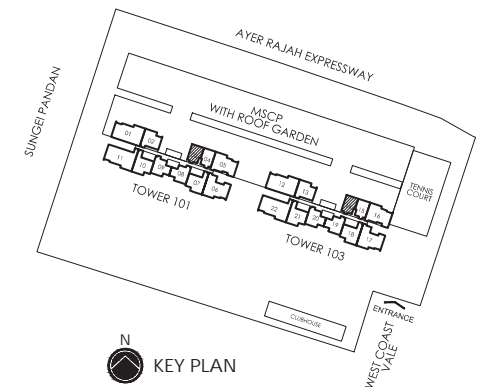
45 sq m | 484 sq ft

#05-03,

#05-14



AREA INCLUDES PES, PRT, A/C LEDGE, BALCONY AND VOID AREA. THE PLANS ARE SUBJECT TO CHANGE AS MAY BE REQUIRED OR APPROVED BY THE RELEVANT AUTHORITIES. AREAS ARE APPROXIMATE MEASUREMENTS ONLY AND ARE SUBJECT TO FINAL SURVEY. PLANS ARE NOT DRAWN TO SCALE AND DO NOT FORM PART OF THE CONTRACT

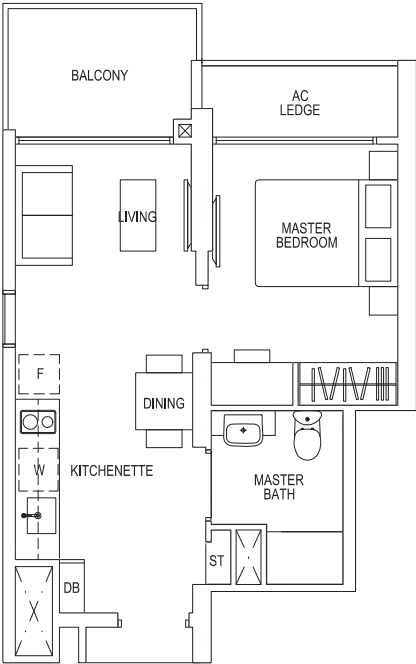


1 - BEDROOM

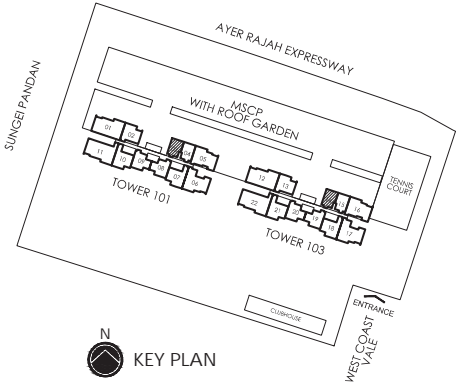
Type A1

43 sq m | 463 sq ft

#06-03 TO #35-03,
#06-14 TO #35-14



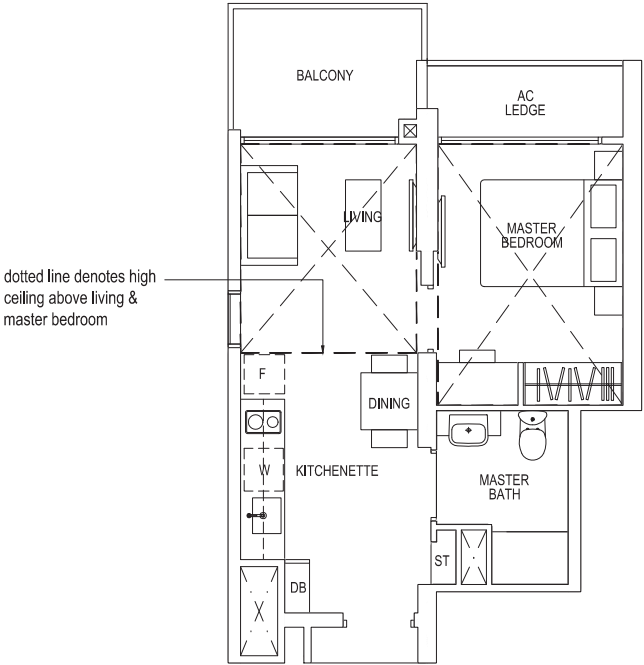
AREA INCLUDES PES, PRT, A/C LEDGE, BALCONY AND VOID AREA. THE PLANS ARE SUBJECT TO CHANGE AS MAY BE REQUIRED OR APPROVED BY THE RELEVANT AUTHORITIES. AREAS ARE APPROXIMATE MEASUREMENTS ONLY AND ARE SUBJECT TO FINAL SURVEY. PLANS ARE NOT DRAWN TO SCALE AND DO NOT FORM PART OF THE CONTRACT



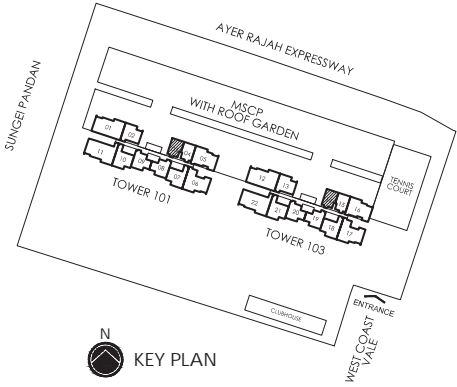
1 - BEDROOM

Type A1-R

62 sq m | 667 sq ft
Incl. of 19 sq m / 204 sq ft of void area (high ceiling) above living & master bedroom
#36-03,
#36-14



AREA INCLUDES PES, PRT, A/C LEDGE, BALCONY AND VOID AREA. THE PLANS ARE SUBJECT TO CHANGE AS MAY BE REQUIRED OR APPROVED BY THE RELEVANT AUTHORITIES. AREAS ARE APPROXIMATE MEASUREMENTS ONLY AND ARE SUBJECT TO FINAL SURVEY. PLANS ARE NOT DRAWN TO SCALE AND DO NOT FORM PART OF THE CONTRACT

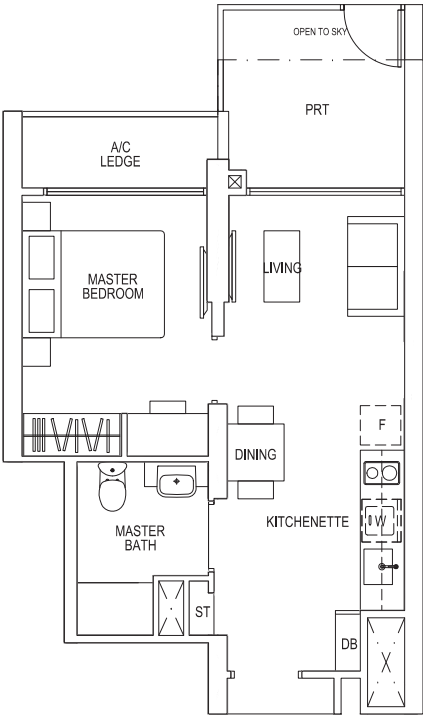


1 - BEDROOM

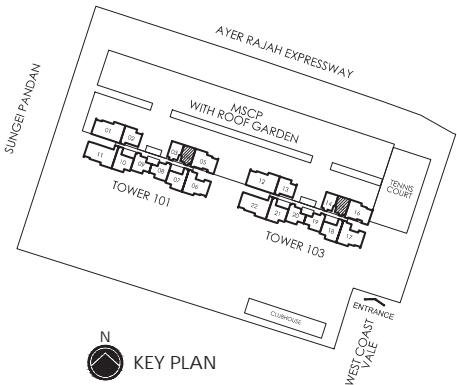
Type A2-P

45 sq m | 484 sq ft

#05-04,
#05-15



AREA INCLUDES PES, PRT, A/C LEDGE, BALCONY AND VOID AREA. THE PLANS ARE SUBJECT TO CHANGE AS MAY BE REQUIRED OR APPROVED BY THE RELEVANT AUTHORITIES. AREAS ARE APPROXIMATE MEASUREMENTS ONLY AND ARE SUBJECT TO FINAL SURVEY. PLANS ARE NOT DRAWN TO SCALE AND DO NOT FORM PART OF THE CONTRACT

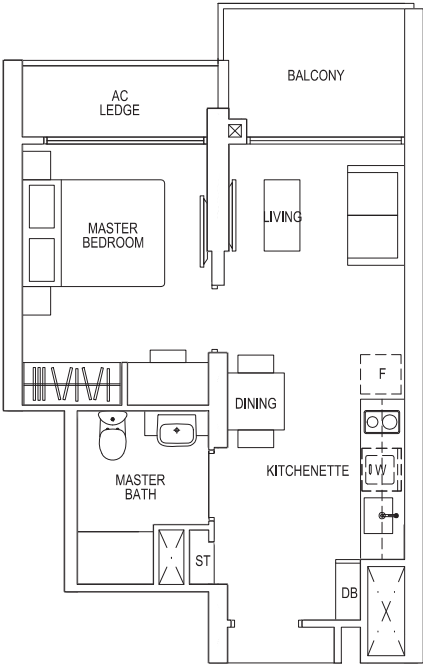


1 - BEDROOM

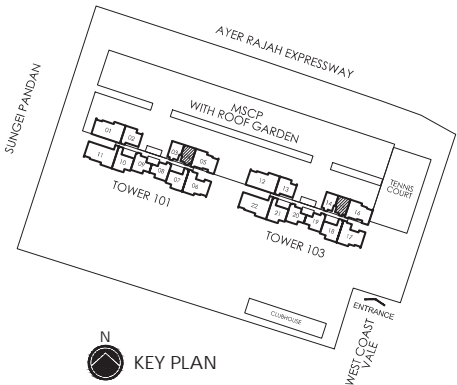
Type A2

43 sq m | 463 sq ft

#06-04 TO #35-04,
#06-15 TO #35-15



AREA INCLUDES PES, PRT, A/C LEDGE, BALCONY AND VOID AREA. THE PLANS ARE SUBJECT TO CHANGE AS MAY BE REQUIRED OR APPROVED BY THE RELEVANT AUTHORITIES. AREAS ARE APPROXIMATE MEASUREMENTS ONLY AND ARE SUBJECT TO FINAL SURVEY. PLANS ARE NOT DRAWN TO SCALE AND DO NOT FORM PART OF THE CONTRACT



1 - BEDROOM

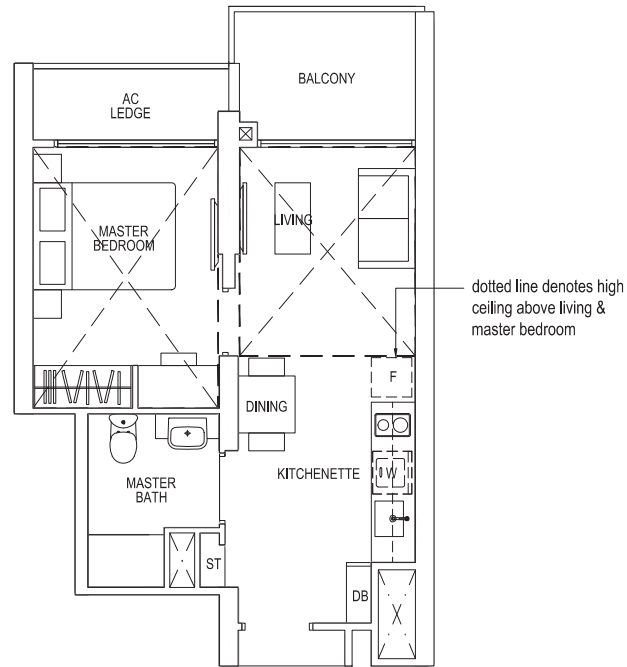
Type A2-R

62 sq m | 667 sq ft

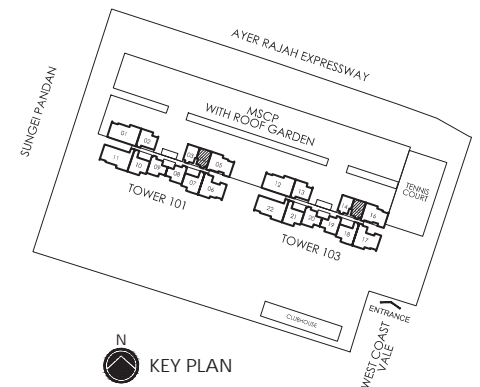
Incl. of 19 sq m / 204 sq ft of void area (high ceiling) above living & master bedroom

#36-04,

#36-15



AREA INCLUDES PES, PRT, A/C LEDGE, BALCONY AND VOID AREA. THE PLANS ARE SUBJECT TO CHANGE AS MAY BE REQUIRED OR APPROVED BY THE RELEVANT AUTHORITIES. AREAS ARE APPROXIMATE MEASUREMENTS ONLY AND ARE SUBJECT TO FINAL SURVEY. PLANS ARE NOT DRAWN TO SCALE AND DO NOT FORM PART OF THE CONTRACT



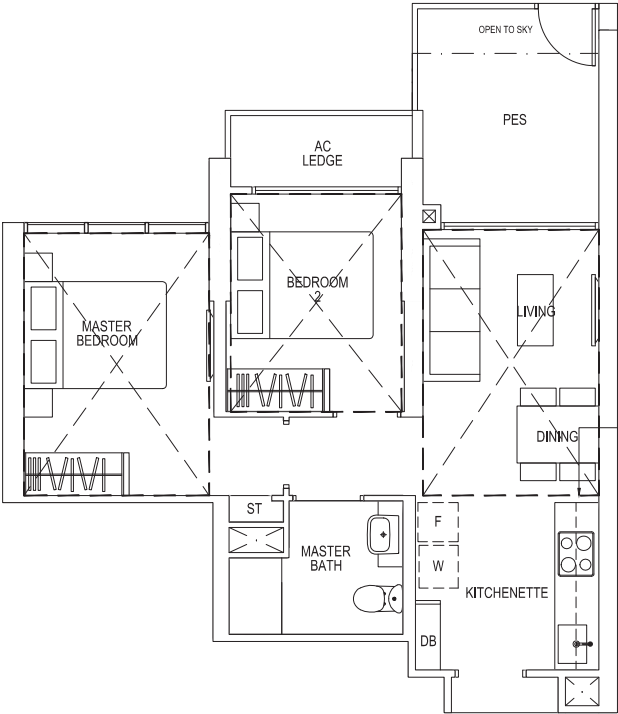
2 - BEDROOM

Type B1-P

58 sq m | 624 sq ft

#01-08*,
#01-09,
#01-19*,
#01-20

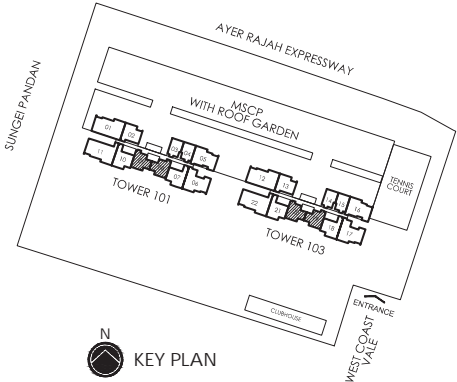
* Mirror Image



dotted line denotes high floor
above living, dining & bedrooms
(High floor does not constitute to
strata void)



AREA INCLUDES PES, PRT, A/C LEDGE, BALCONY AND VOID AREA. THE PLANS ARE SUBJECT TO CHANGE AS MAY BE REQUIRED OR APPROVED BY THE RELEVANT AUTHORITIES.
AREAS ARE APPROXIMATE MEASUREMENTS ONLY AND ARE SUBJECT TO FINAL SURVEY. PLANS ARE NOT DRAWN TO SCALE AND DO NOT FORM PART OF THE CONTRACT



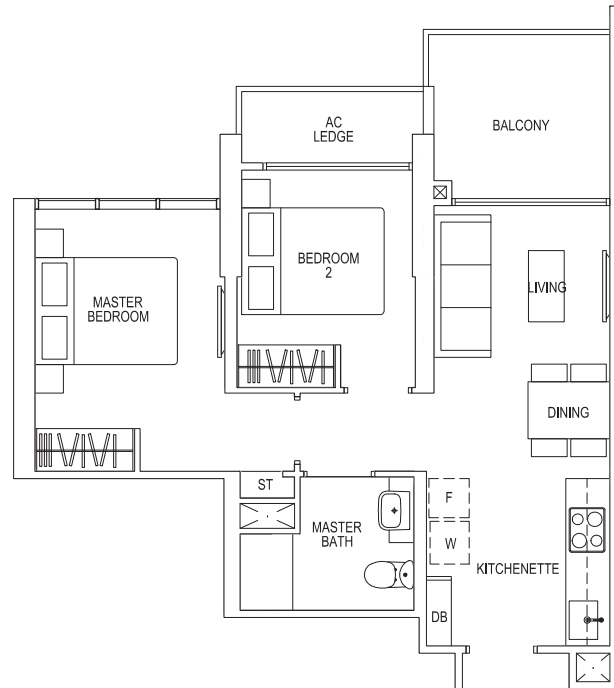
2 - BEDROOM

Type B1

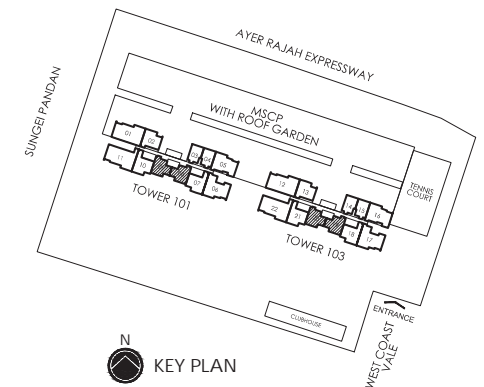
56 sq m | 603 sq ft

#02-08* TO #35-08*,
#02-09 TO #35-09,
#02-19* TO #35-19*,
#02-20 TO #35-20

* Mirror Image



AREA INCLUDES PES, PRT, A/C LEDGE, BALCONY AND VOID AREA. THE PLANS ARE SUBJECT TO CHANGE AS MAY BE REQUIRED OR APPROVED BY THE RELEVANT AUTHORITIES.
AREAS ARE APPROXIMATE MEASUREMENTS ONLY AND ARE SUBJECT TO FINAL SURVEY. PLANS ARE NOT DRAWN TO SCALE AND DO NOT FORM PART OF THE CONTRACT



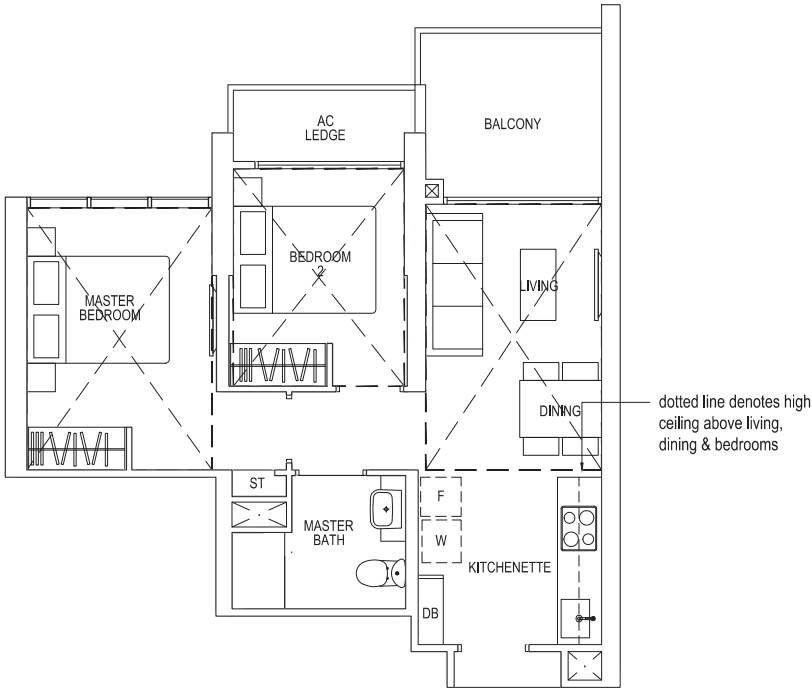
2 - BEDROOM

Type B1-R

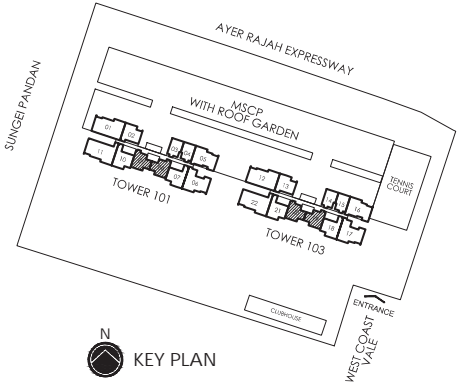
86 sq m | 926 sq ft
Incl. of 30 sq m / 322 sq ft of void area (high ceiling) above living, dining & bedrooms

- #36-08*,
- #36-09,
- #36-19*,
- #36-20

* Mirror Image



AREA INCLUDES PES, PRT, A/C LEDGE, BALCONY AND VOID AREA. THE PLANS ARE SUBJECT TO CHANGE AS MAY BE REQUIRED OR APPROVED BY THE RELEVANT AUTHORITIES. AREAS ARE APPROXIMATE MEASUREMENTS ONLY AND ARE SUBJECT TO FINAL SURVEY. PLANS ARE NOT DRAWN TO SCALE AND DO NOT FORM PART OF THE CONTRACT

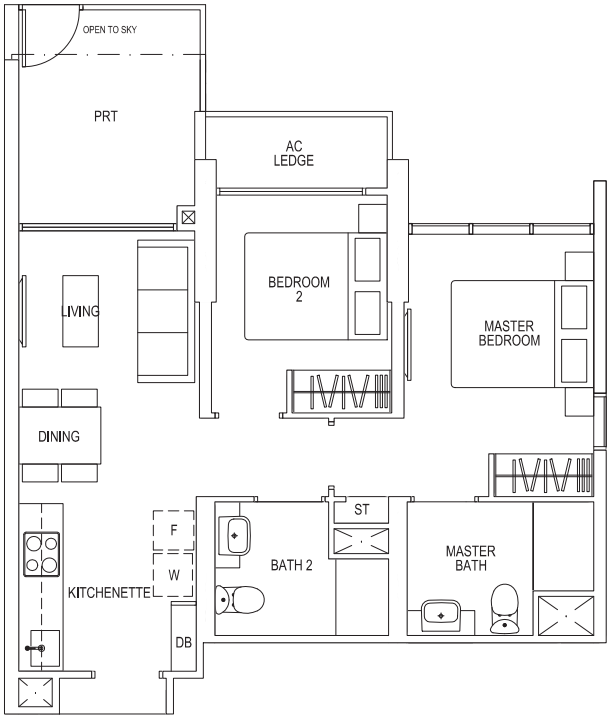


2 - BEDROOM

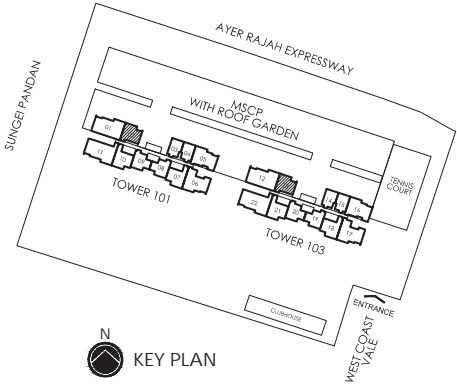
Type B2-P

62 sq m | 667 sq ft

#05-02,
#05-13



AREA INCLUDES PES, PRT, A/C LEDGE, BALCONY AND VOID AREA. THE PLANS ARE SUBJECT TO CHANGE AS MAY BE REQUIRED OR APPROVED BY THE RELEVANT AUTHORITIES. AREAS ARE APPROXIMATE MEASUREMENTS ONLY AND ARE SUBJECT TO FINAL SURVEY. PLANS ARE NOT DRAWN TO SCALE AND DO NOT FORM PART OF THE CONTRACT

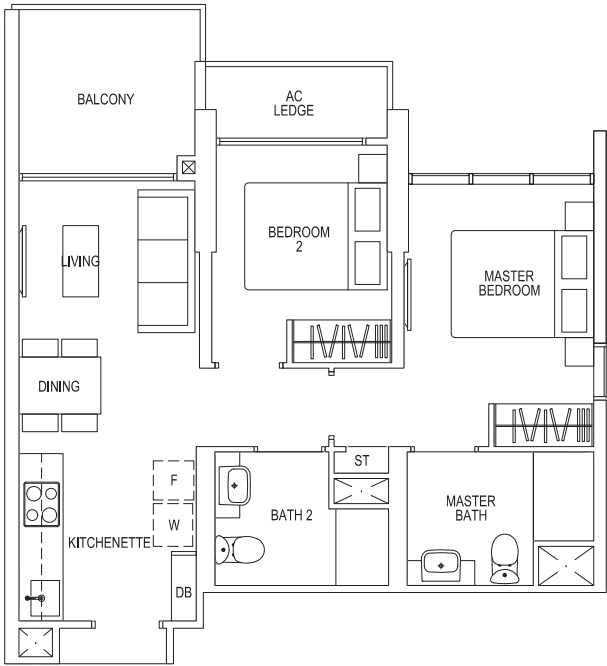


2 - BEDROOM

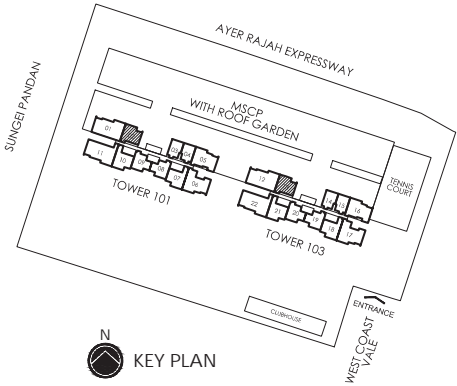
Type B2

60 sq m | 646 sq ft

#06-02 TO #35-02,
#06-13 TO #35-13



AREA INCLUDES PES, PRT, A/C LEDGE, BALCONY AND VOID AREA. THE PLANS ARE SUBJECT TO CHANGE AS MAY BE REQUIRED OR APPROVED BY THE RELEVANT AUTHORITIES. AREAS ARE APPROXIMATE MEASUREMENTS ONLY AND ARE SUBJECT TO FINAL SURVEY. PLANS ARE NOT DRAWN TO SCALE AND DO NOT FORM PART OF THE CONTRACT



2 - BEDROOM

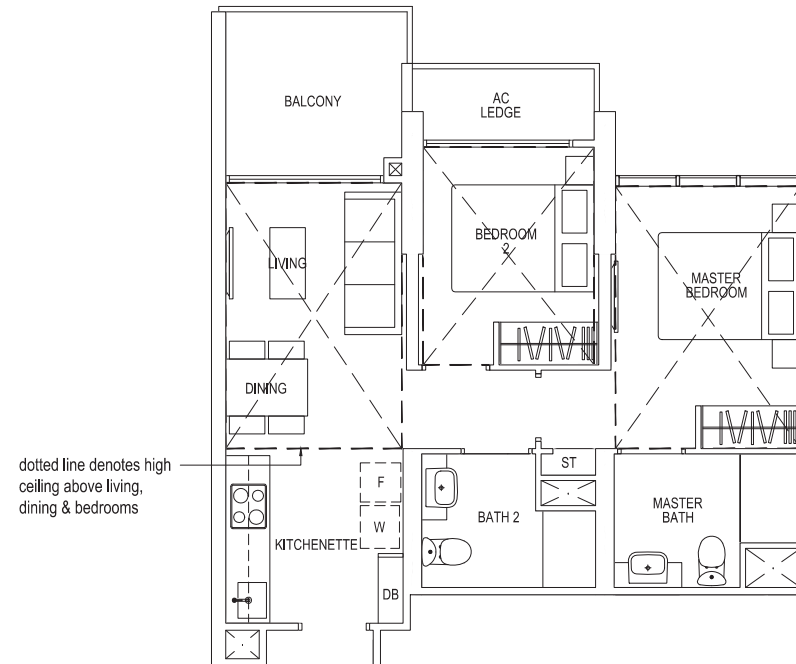
Type B2-R

90 sq m | 969 sq ft

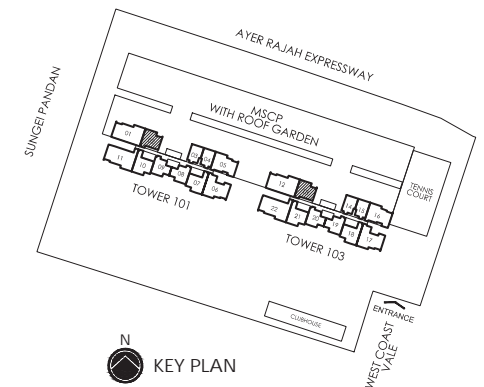
Incl. of 30 sq m / 322 sq ft of void area (high ceiling) above living, dining & bedrooms

#36-02,

#36-13



AREA INCLUDES PES, PRT, A/C LEDGE, BALCONY AND VOID AREA. THE PLANS ARE SUBJECT TO CHANGE AS MAY BE REQUIRED OR APPROVED BY THE RELEVANT AUTHORITIES. AREAS ARE APPROXIMATE MEASUREMENTS ONLY AND ARE SUBJECT TO FINAL SURVEY. PLANS ARE NOT DRAWN TO SCALE AND DO NOT FORM PART OF THE CONTRACT



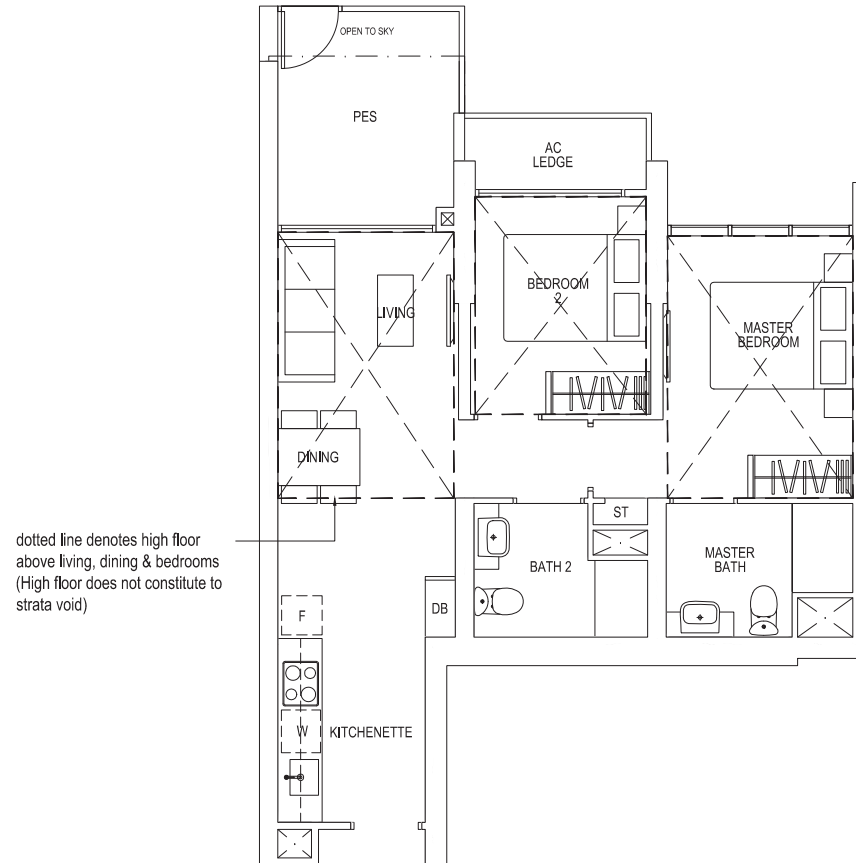
2 - BEDROOM

Type B3-P

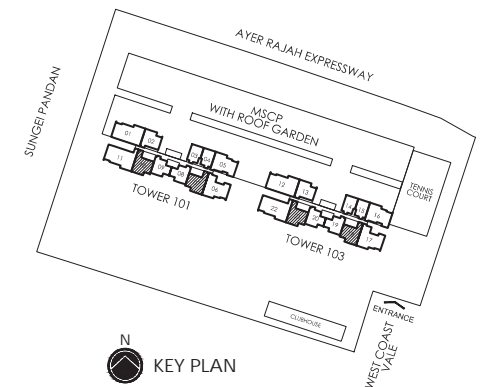
68 sq m | 732 sq ft

#01-07,
#01-10*,
#01-18,
#01-21*

* Mirror Image



AREA INCLUDES PES, PRT, A/C LEDGE, BALCONY AND VOID AREA. THE PLANS ARE SUBJECT TO CHANGE AS MAY BE REQUIRED OR APPROVED BY THE RELEVANT AUTHORITIES.
AREAS ARE APPROXIMATE MEASUREMENTS ONLY AND ARE SUBJECT TO FINAL SURVEY. PLANS ARE NOT DRAWN TO SCALE AND DO NOT FORM PART OF THE CONTRACT



2 - BEDROOM

Type B3

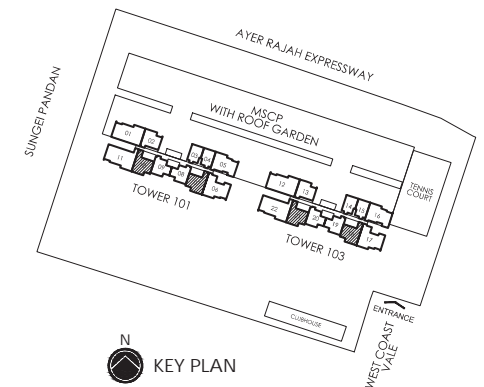
66 sq m | 710 sq ft

#02-07 TO #35-07,
#02-10* TO #35-10*,
#02-18 TO #35-18,
#02-21* TO #35-21*

* Mirror Image



AREA INCLUDES PES, PRT, A/C LEDGE, BALCONY AND VOID AREA. THE PLANS ARE SUBJECT TO CHANGE AS MAY BE REQUIRED OR APPROVED BY THE RELEVANT AUTHORITIES.
AREAS ARE APPROXIMATE MEASUREMENTS ONLY AND ARE SUBJECT TO FINAL SURVEY. PLANS ARE NOT DRAWN TO SCALE AND DO NOT FORM PART OF THE CONTRACT



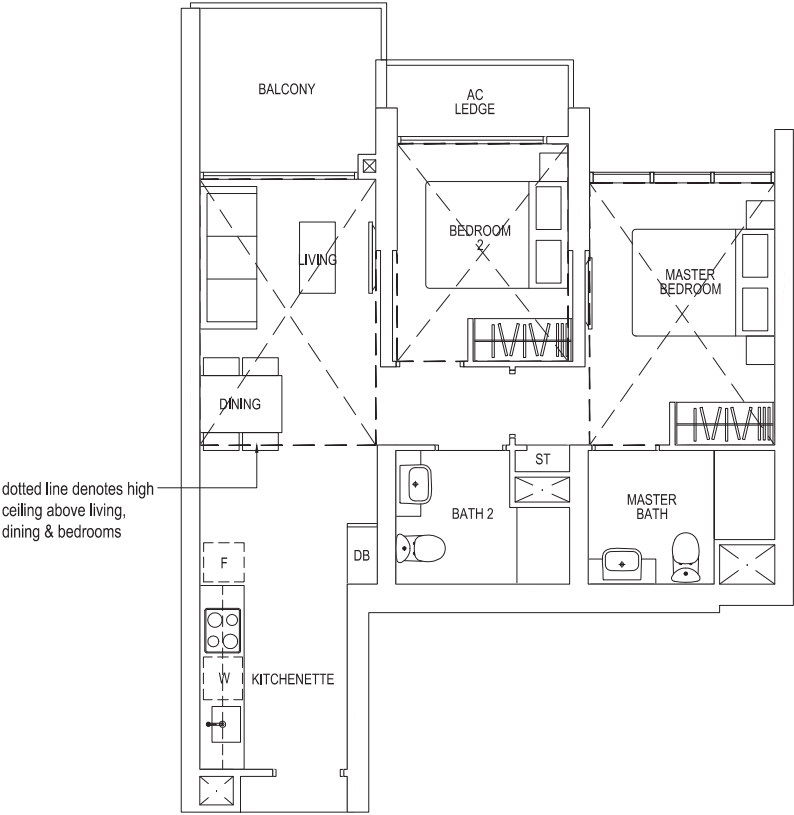
2 - BEDROOM

Type B3-R

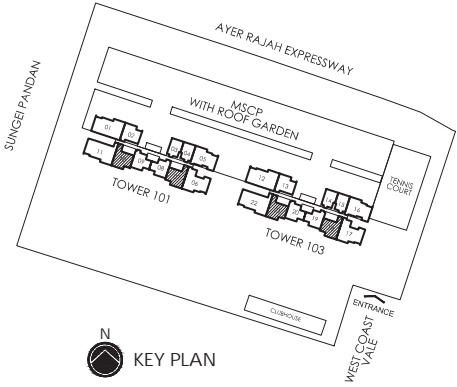
96 sq m | 1033 sq ft
Incl. of 30 sq m / 322 sq ft of void area (high ceiling) above living, dining & bedrooms

- #36-07,
- #36-10*,
- #36-18,
- #36-21*

* Mirror Image



AREA INCLUDES PES, PRT, A/C LEDGE, BALCONY AND VOID AREA. THE PLANS ARE SUBJECT TO CHANGE AS MAY BE REQUIRED OR APPROVED BY THE RELEVANT AUTHORITIES. AREAS ARE APPROXIMATE MEASUREMENTS ONLY AND ARE SUBJECT TO FINAL SURVEY. PLANS ARE NOT DRAWN TO SCALE AND DO NOT FORM PART OF THE CONTRACT



3 - BEDROOM

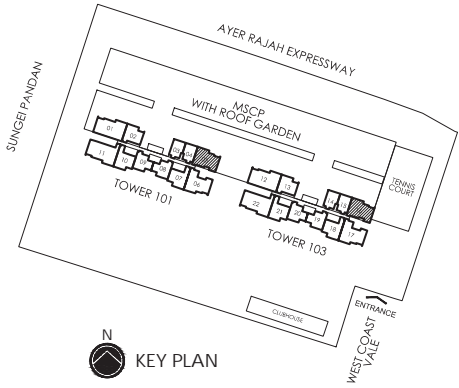
Type C1-P

86 sq m | 926 sq ft

#05-05,
#05-16



AREA INCLUDES PES, PRT, A/C LEDGE, BALCONY AND VOID AREA. THE PLANS ARE SUBJECT TO CHANGE AS MAY BE REQUIRED OR APPROVED BY THE RELEVANT AUTHORITIES. AREAS ARE APPROXIMATE MEASUREMENTS ONLY AND ARE SUBJECT TO FINAL SURVEY. PLANS ARE NOT DRAWN TO SCALE AND DO NOT FORM PART OF THE CONTRACT



3 - BEDROOM

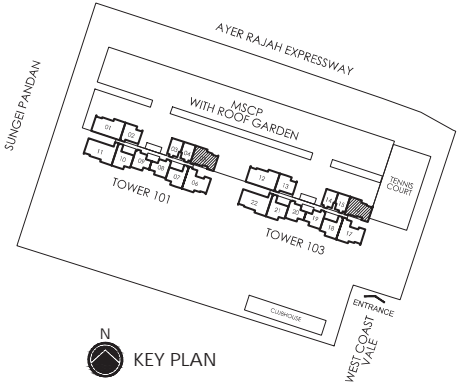
Type C1

84 sq m | 904 sq ft

#06-05 TO #35-05,
#06-16 TO #35-16



AREA INCLUDES PES, PRT, A/C LEDGE, BALCONY AND VOID AREA. THE PLANS ARE SUBJECT TO CHANGE AS MAY BE REQUIRED OR APPROVED BY THE RELEVANT AUTHORITIES.
AREAS ARE APPROXIMATE MEASUREMENTS ONLY AND ARE SUBJECT TO FINAL SURVEY. PLANS ARE NOT DRAWN TO SCALE AND DO NOT FORM PART OF THE CONTRACT



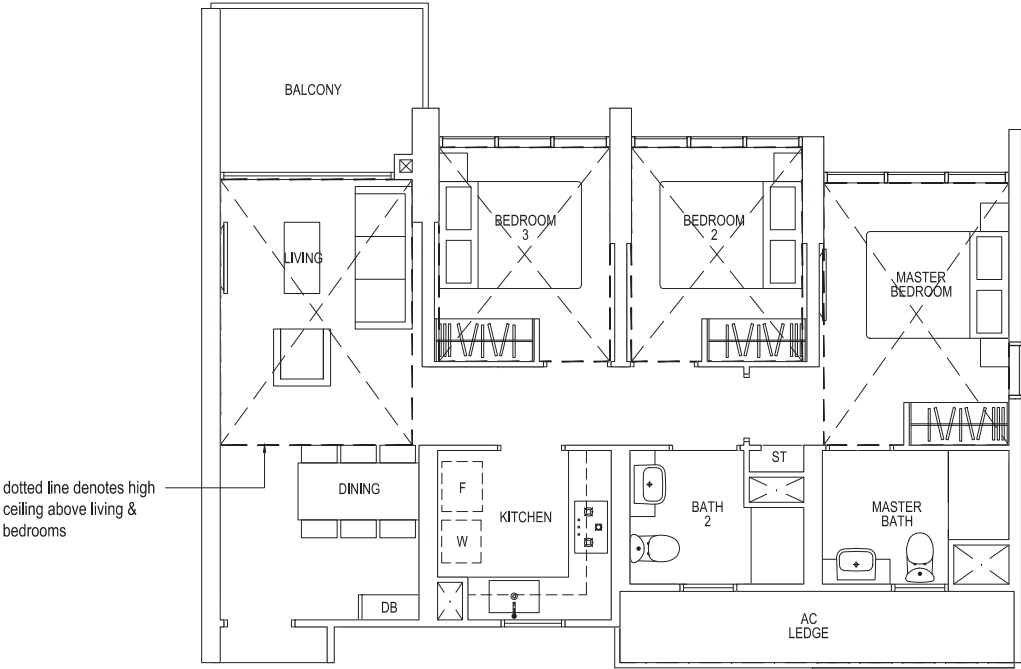
3 - BEDROOM

Type C1-R

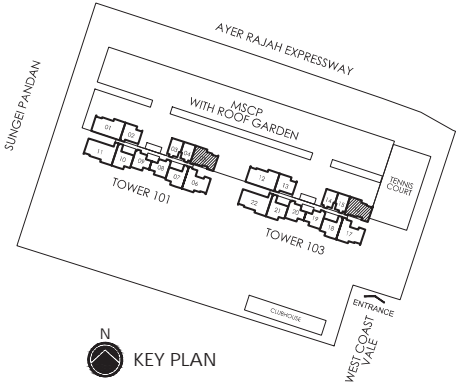
124 sq m | 1335 sq ft

Incl. of 40 sq m / 430 sq ft of void area (high ceiling) above living & bedrooms

#36-05,
#36-16



AREA INCLUDES PES, PRT, A/C LEDGE, BALCONY AND VOID AREA. THE PLANS ARE SUBJECT TO CHANGE AS MAY BE REQUIRED OR APPROVED BY THE RELEVANT AUTHORITIES. AREAS ARE APPROXIMATE MEASUREMENTS ONLY AND ARE SUBJECT TO FINAL SURVEY. PLANS ARE NOT DRAWN TO SCALE AND DO NOT FORM PART OF THE CONTRACT



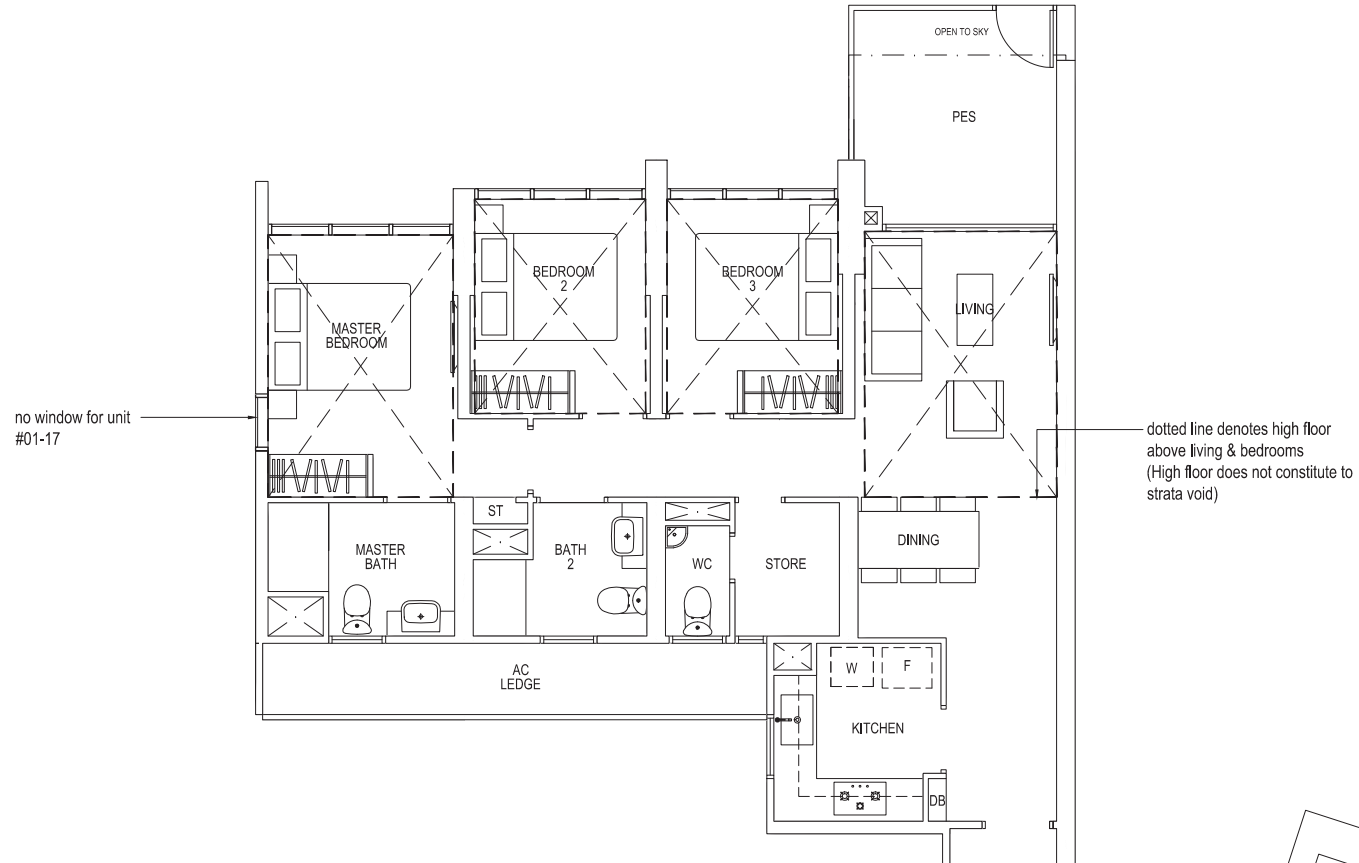
3 - BEDROOM

Type C2-P

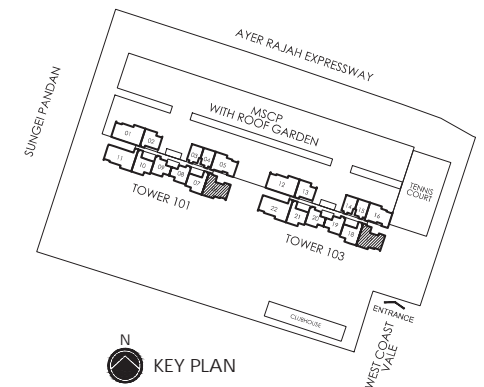
96 sq m | 1033 sq ft

#01-06,

#01-17



AREA INCLUDES PES, PRT, A/C LEDGE, BALCONY AND VOID AREA. THE PLANS ARE SUBJECT TO CHANGE AS MAY BE REQUIRED OR APPROVED BY THE RELEVANT AUTHORITIES. AREAS ARE APPROXIMATE MEASUREMENTS ONLY AND ARE SUBJECT TO FINAL SURVEY. PLANS ARE NOT DRAWN TO SCALE AND DO NOT FORM PART OF THE CONTRACT

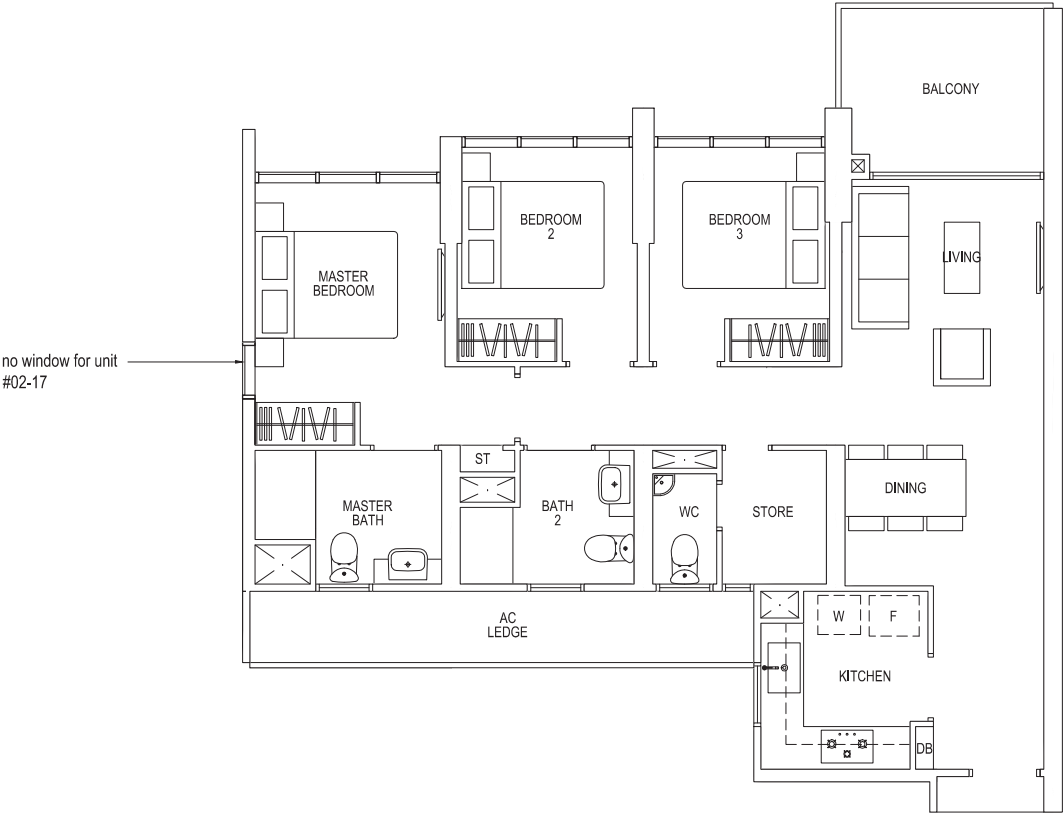


3 - BEDROOM

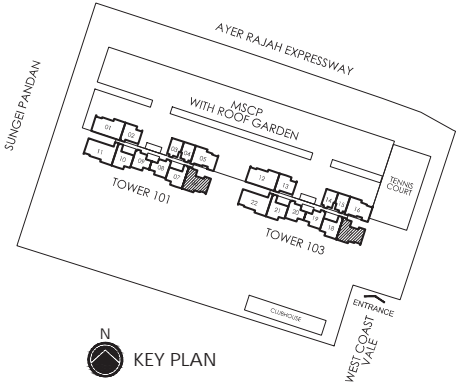
Type C2

94 sq m | 1012 sq ft

#02-06 TO #35-06,
#02-17 TO #35-17



AREA INCLUDES PES, PRT, A/C LEDGE, BALCONY AND VOID AREA. THE PLANS ARE SUBJECT TO CHANGE AS MAY BE REQUIRED OR APPROVED BY THE RELEVANT AUTHORITIES. AREAS ARE APPROXIMATE MEASUREMENTS ONLY AND ARE SUBJECT TO FINAL SURVEY. PLANS ARE NOT DRAWN TO SCALE AND DO NOT FORM PART OF THE CONTRACT



3 - BEDROOM

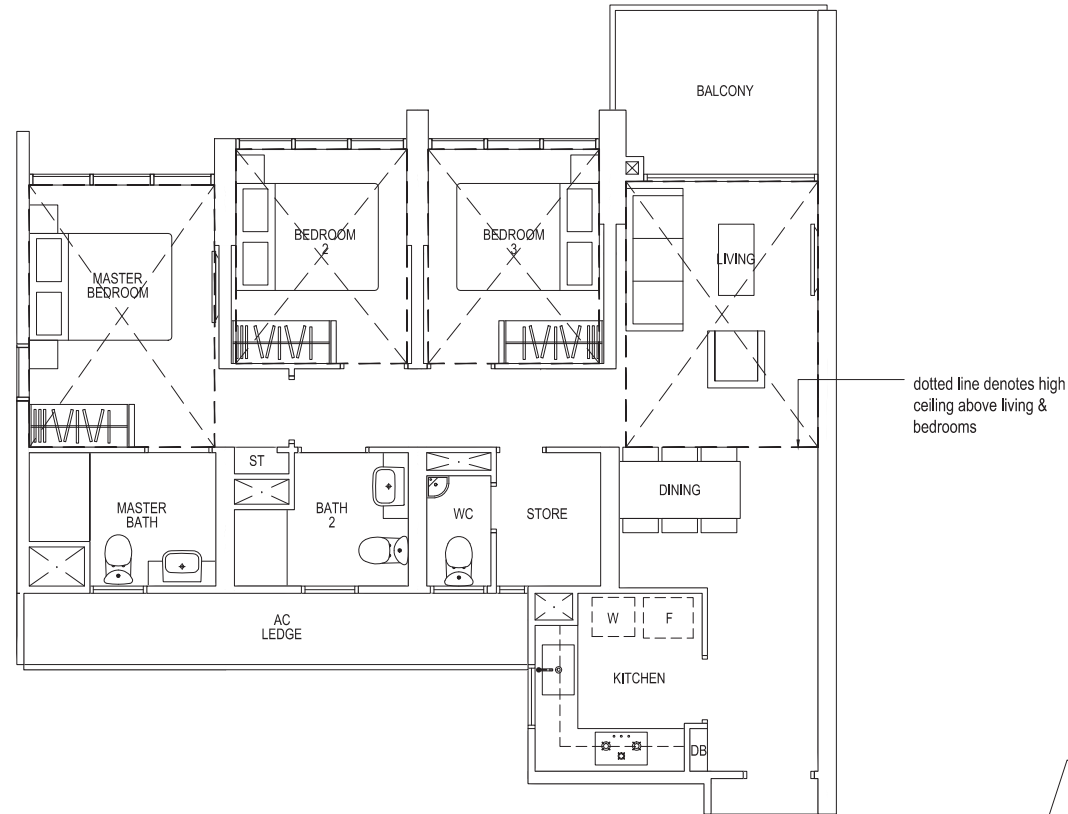
Type C2-R

134 sq m | 1442 sq ft

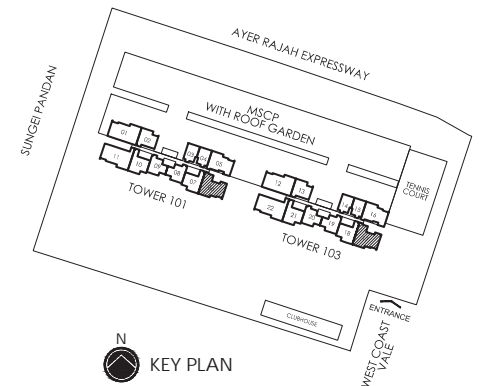
Incl. of 40 sq m / 430 sq ft of void area (high ceiling) above living & bedrooms

#36-06,

#36-17



AREA INCLUDES PES, PRT, A/C LEDGE, BALCONY AND VOID AREA. THE PLANS ARE SUBJECT TO CHANGE AS MAY BE REQUIRED OR APPROVED BY THE RELEVANT AUTHORITIES. AREAS ARE APPROXIMATE MEASUREMENTS ONLY AND ARE SUBJECT TO FINAL SURVEY. PLANS ARE NOT DRAWN TO SCALE AND DO NOT FORM PART OF THE CONTRACT



4 - BEDROOM

Type D1-P

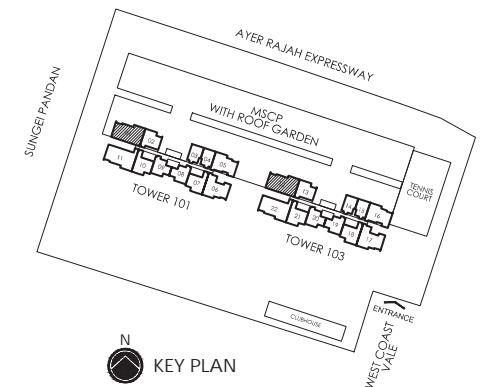
111 sq m | 1195 sq ft

#05-01,

#05-12



AREA INCLUDES PES, PRT, A/C LEDGE, BALCONY AND VOID AREA. THE PLANS ARE SUBJECT TO CHANGE AS MAY BE REQUIRED OR APPROVED BY THE RELEVANT AUTHORITIES. AREAS ARE APPROXIMATE MEASUREMENTS ONLY AND ARE SUBJECT TO FINAL SURVEY. PLANS ARE NOT DRAWN TO SCALE AND DO NOT FORM PART OF THE CONTRACT



4 - BEDROOM

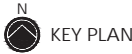
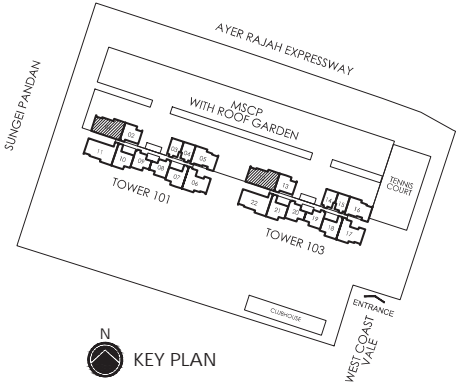
Type D1

107 sq m | 1152 sq ft

#06-01 TO #35-01,
#06-12 TO #35-12



AREA INCLUDES PES, PRT, A/C LEDGE, BALCONY AND VOID AREA. THE PLANS ARE SUBJECT TO CHANGE AS MAY BE REQUIRED OR APPROVED BY THE RELEVANT AUTHORITIES.
AREAS ARE APPROXIMATE MEASUREMENTS ONLY AND ARE SUBJECT TO FINAL SURVEY. PLANS ARE NOT DRAWN TO SCALE AND DO NOT FORM PART OF THE CONTRACT



KEY PLAN

4 - BEDROOM

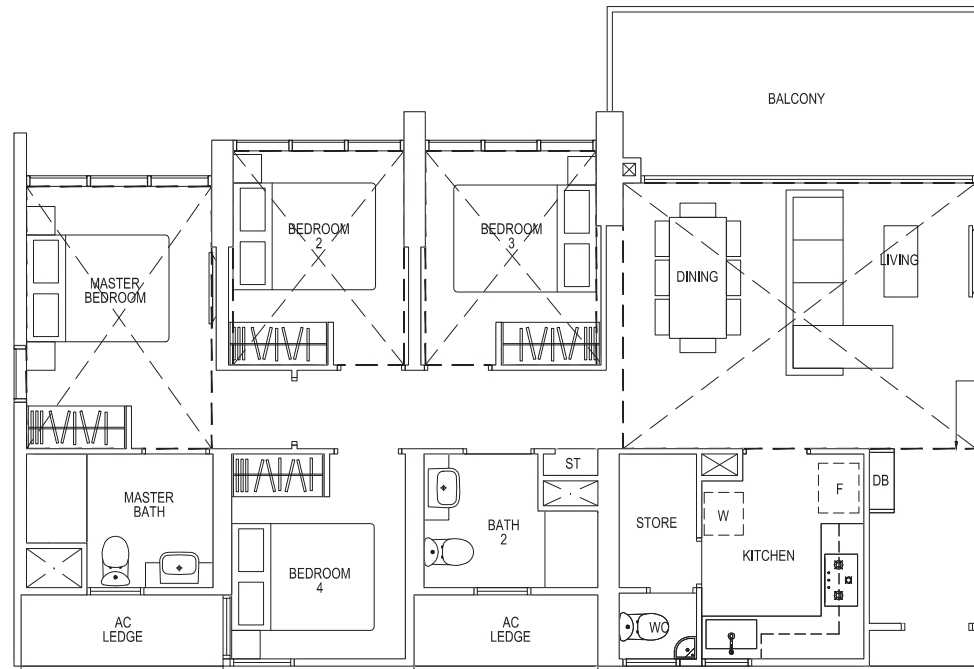
Type D1-R

156 sq m | 1679 sq ft

Incl. of 49 sq m / 526 sq ft of void area (high ceiling) above living, dining & bedrooms

#36-01,

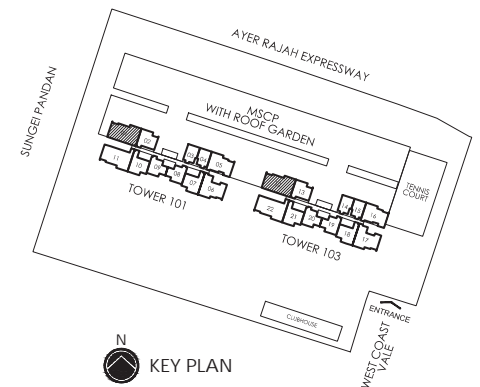
#36-12



dotted line denotes high ceiling above living, dining & bedrooms



AREA INCLUDES PES, PRT, A/C LEDGE, BALCONY AND VOID AREA. THE PLANS ARE SUBJECT TO CHANGE AS MAY BE REQUIRED OR APPROVED BY THE RELEVANT AUTHORITIES. AREAS ARE APPROXIMATE MEASUREMENTS ONLY AND ARE SUBJECT TO FINAL SURVEY. PLANS ARE NOT DRAWN TO SCALE AND DO NOT FORM PART OF THE CONTRACT

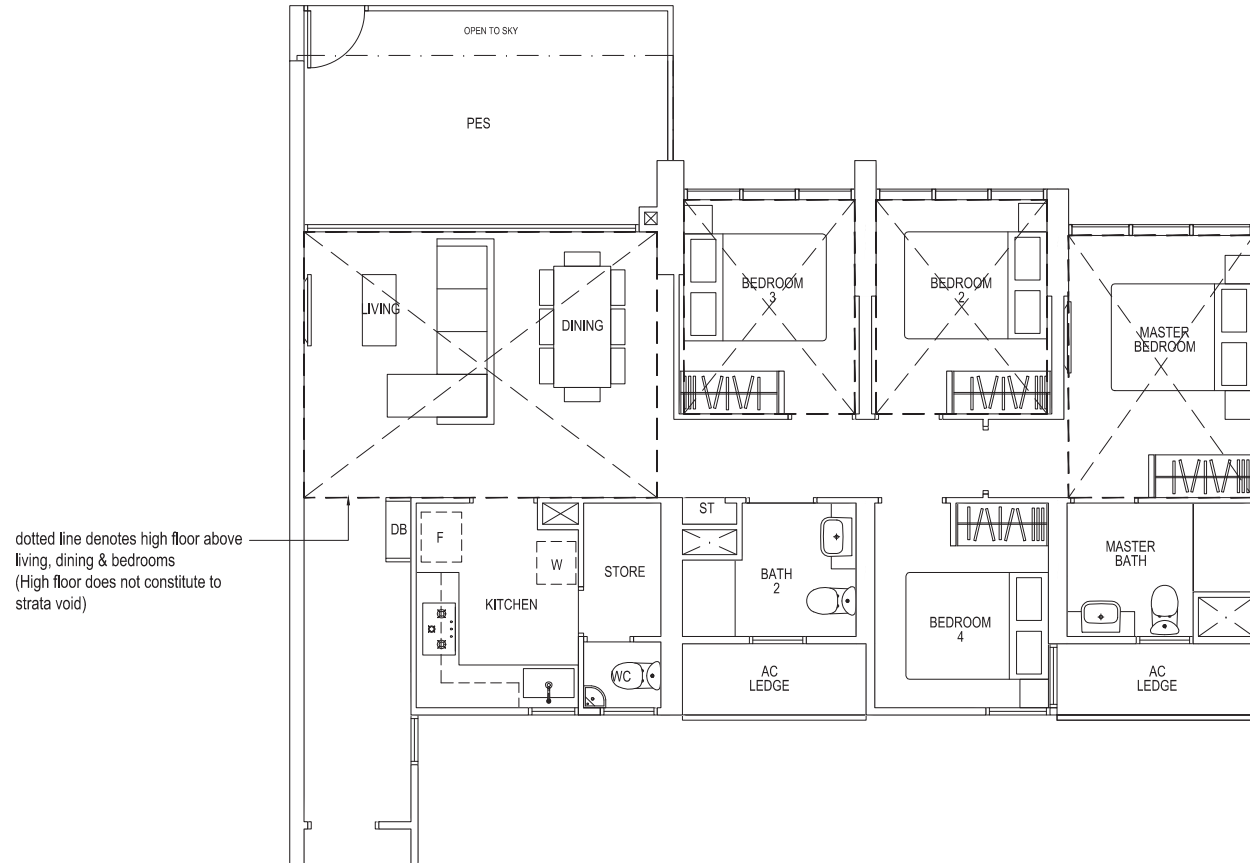


4 - BEDROOM

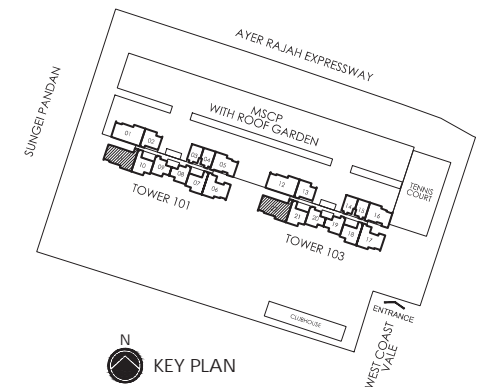
Type D2-P

114 sq m | 1227 sq ft

#01-11,
#01-22



AREA INCLUDES PES, PRT, A/C LEDGE, BALCONY AND VOID AREA. THE PLANS ARE SUBJECT TO CHANGE AS MAY BE REQUIRED OR APPROVED BY THE RELEVANT AUTHORITIES.
AREAS ARE APPROXIMATE MEASUREMENTS ONLY AND ARE SUBJECT TO FINAL SURVEY. PLANS ARE NOT DRAWN TO SCALE AND DO NOT FORM PART OF THE CONTRACT



4 - BEDROOM

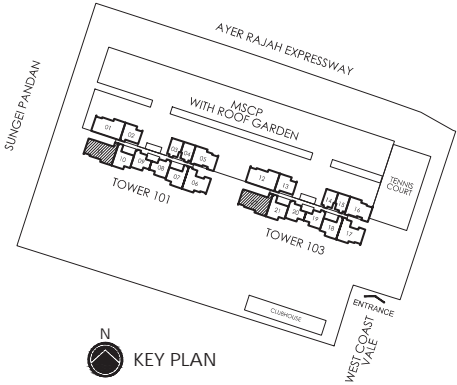
Type D2

110 sq m | 1184 sq ft

#02-11 TO #35-11,
#02-22 TO #35-22



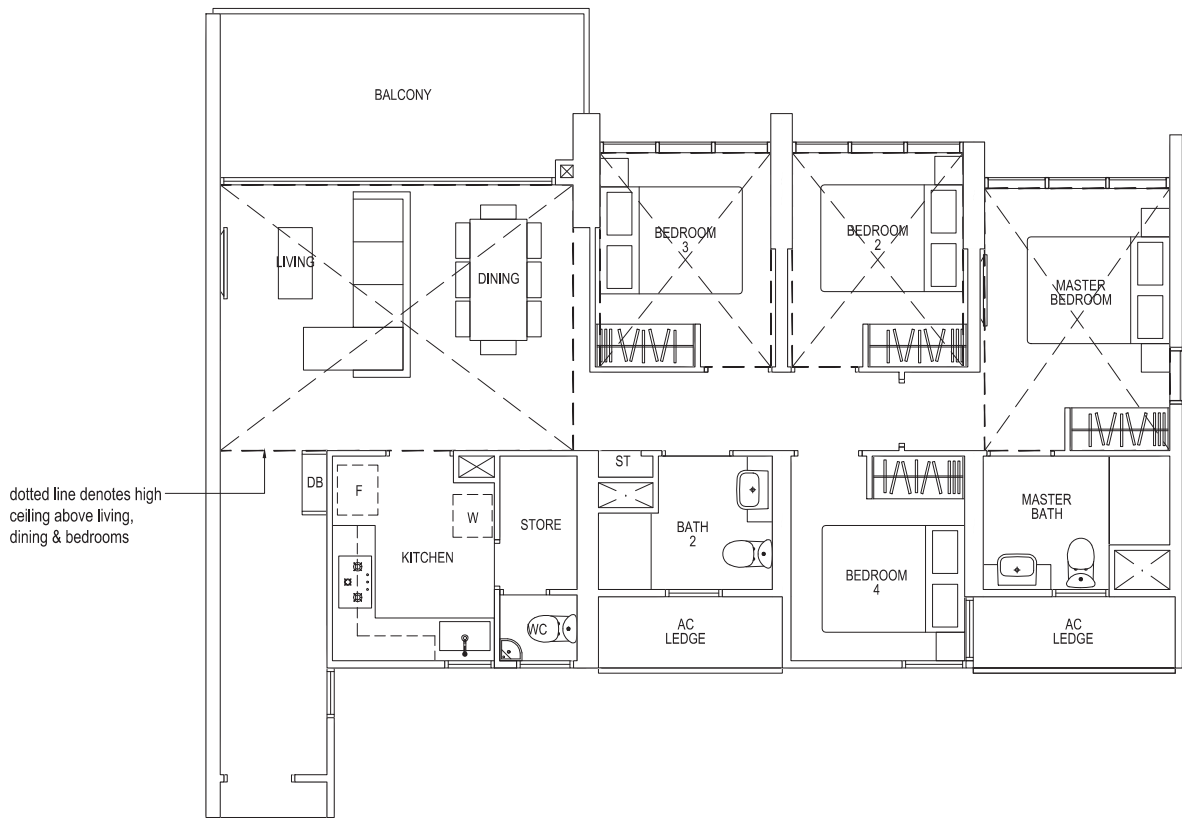
AREA INCLUDES PES, PRT, A/C LEDGE, BALCONY AND VOID AREA. THE PLANS ARE SUBJECT TO CHANGE AS MAY BE REQUIRED OR APPROVED BY THE RELEVANT AUTHORITIES.
AREAS ARE APPROXIMATE MEASUREMENTS ONLY AND ARE SUBJECT TO FINAL SURVEY. PLANS ARE NOT DRAWN TO SCALE AND DO NOT FORM PART OF THE CONTRACT



4 - BEDROOM

Type D2-R

159 sq m | 1711 sq ft
Incl. of 49 sq m / 526 sq ft of void area (high ceiling) above living, dining & bedrooms
#36-11,
#36-22



AREA INCLUDES PES, PRT, A/C LEDGE, BALCONY AND VOID AREA. THE PLANS ARE SUBJECT TO CHANGE AS MAY BE REQUIRED OR APPROVED BY THE RELEVANT AUTHORITIES.
AREAS ARE APPROXIMATE MEASUREMENTS ONLY AND ARE SUBJECT TO FINAL SURVEY. PLANS ARE NOT DRAWN TO SCALE AND DO NOT FORM PART OF THE CONTRACT

