

THE TERRACE

EXECUTIVE CONDOMINIUM

THE ONLY

EXECUTIVE CONDOMINIUM

BY THE PUNGGOL WATERWAY

ASCEND

THE TERRACE

OF LIFE

Terraces are characterized by a series of raised platforms. Think of houses perched on a hilltop, or undulating coastal resorts. Ascend to a wonderful life with The Terrace, the first and only executive condominium by the Punggol Waterway.

THE RIVER

RUNS BY

YOUR HOME

The Terrace is the first executive condominium located along the Punggol Waterway. Dubbed the “Venice of Punggol”*, The Terrace will be part of an exciting neighbourhood with immense retail, entertainment and recreational possibilities.

The Terrace is designed with a sprawling three-tiered terrace that runs through it with distinct lifestyle facilities.

UNIQUELY DESIGNED
WITH THREE TIERS OF
WATERFRONT LIFESTYLES



ACTIVE TIER WATERFRONT TERRACE



- | | | | | |
|------------------|---------------------|--------------------------|-----------------------------|---------------------------|
| 1 Function Room | 2 BBQ Pit | 3 Dining Pavilion | 4 Beach Cabana | 5 Sports Bar & Games Room |
| 6 Floating Deck | 7 50m Beach Pool | 8 Waterfront Gym | 9 Sun Deck | 10 Kids' Pool |
| 11 Aqua Gym Pool | 12 Kids' Playground | 13 Kids' Enrichment Room | 14 Kids' Multi-Purpose Room | 15 Kids' Play Room |
| 16 Sail Pavilion | 17 Changing Room | 18 Dance Studio | 19 Steam Room | 20 Water Cascade |

LEISURE TIER BOARDWALK TERRACE



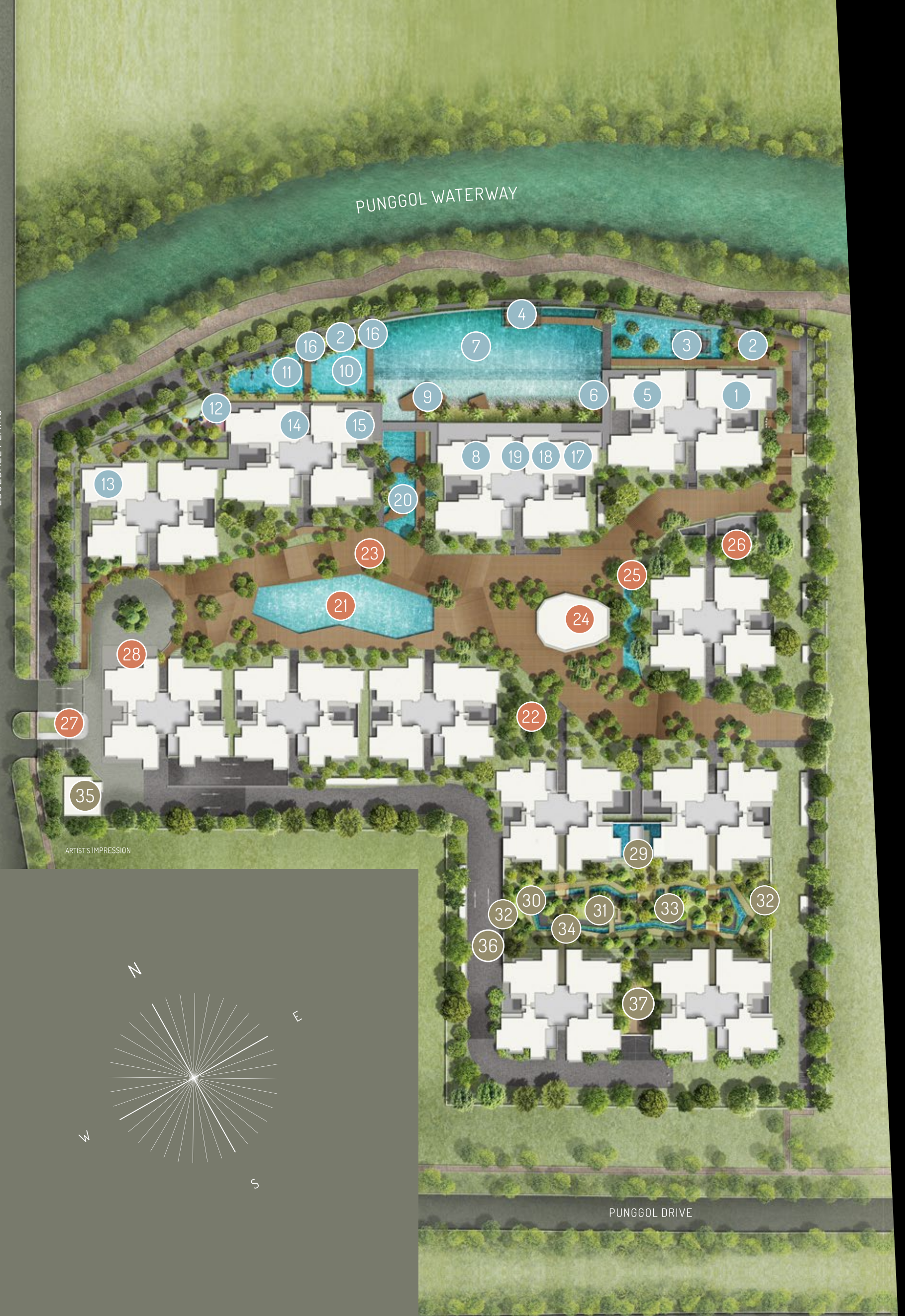
- | | | | |
|-----------------|-----------------------|-----------------|--|
| 21 Origami Pool | 22 Urban Farming | 23 Origami Deck | 24 The Clubhouse: Karaoke Rooms & Reading Lounge |
| 25 Biopond | 26 Dipterocarp Forest | 27 Guard House | 28 Drop-off |

TRANQUIL TIER MEDITATION TERRACE



- | | | | | |
|-------------------|-----------------------|---|----------------|-------------------|
| 29 Water Feature | 30 Meandering Rivulet | 31 Yoga Deck | 32 Picnic Lawn | 33 Hammock Lounge |
| 34 Sitting Lounge | 35 Bin Centre | 36 Substation at 1 st & 2 nd storey | 37 Genset | |

EDGE DALE PLAINS





ACTIVE TIER

WATERFRONT TERRACE

Continuing the idea of terraced platforms, the Waterfront Gym, Sports Bar & Games Room, 32-seater Function Room and Kids' Enrichment Rooms are perched above the vibrant 50m Beach Pool, allowing residents to enjoy full views of the Punggol Waterway.



FUNCTION ROOM

Host your first housewarming or birthday parties here

DINING PAVILION

Wine and dine in style, with fantastic waterfront views

SPORTS BAR & GAMES ROOM

Catch all your favourite sports matches or relax with some games

50m BEACH POOL

Have a friendly swimming match with your family and friends

BEACH CABANA

Sip a martini and laze the afternoon away

WATERFRONT GYM

Work out at the Waterfront Gym and wind down at the connecting Steam Room

SAIL PAVILION

Watch the sunset and the world go by

KIDS' PLAY ROOM

A play haven for the active little ones

KIDS' MULTI-PURPOSE ROOM

An open, flexible space for various children's activities

KIDS' ENRICHMENT ROOM

Let your kids play, learn and grow along the way

ARTIST'S IMPRESSION



FUNCTION ROOM WITH INTEGRATED OUTDOOR DECK

The 32-seater Function Room is designed with an outdoor deck and BBQ pit integrated with landscaped pools. Bask in breathtaking views of the Punggol Waterway while you host dinner parties or family gatherings.



THROW A PARTY,
HOST FRIENDS AND MINGLE
BY THE SINUOUS WATERWAY

ARTIST'S IMPRESSION



BREATHTAKING VIEW FROM THE WATERFRONT GYM

The thoughtfully designed Waterfront Gym is fitted out with strength training and cardiovascular equipment. Overlooking the Waterfront Terrace and the Punggol Waterway, working out quickly becomes a visual therapy. Finish off your workout with a relaxing session at the connecting Steam Room.

ENJOY A GOOD WORKOUT

WITH A CAPTIVATING

WATERFRONT VIEW



ARTIST'S IMPRESSION



STYLISHLY-DESIGNED SPORTS BAR & GAMES ROOM

The stylishly-designed Sports Bar & Games Room is a luxurious space for you and your friends to catch your favourite sports games. Challenge them to a game of pool or have a light snack from the in-house vending machines.



CATCH YOUR FAVOURITE GAMES

WITH FAMILY AND FRIENDS

AT THE SPORTS BAR

ARTIST'S IMPRESSION



LEISURE TIER

BOARDWALK TERRACE

The Boardwalk Terrace within the Leisure Tier is characterized by an undulating timber Origami Deck and the uniquely-shaped Origami Pool for residents to enjoy. The Clubhouse is a signature faceted building with Karaoke Rooms and a Reading Lounge with views out towards the pool.



ARTIST'S IMPRESSION

ORIGAMI POOL

A uniquely shaped pool that is architecturally eye-catching

ORIGAMI DECK

The timber Origami Deck surrounds the pool like a piece of undulating origami artwork

THE CLUBHOUSE

A signature clubhouse uniquely designed with Karaoke Rooms and a Reading Lounge



TRANQUIL TIER

MEDITATION TERRACE

The Meditation Terrace is an elevated space for some tranquil, private moments. Stretch out at the Yoga Deck while the quiet Meandering Rivulet flows by. Catch up on that novel at the Hammock Lounge. Or simply while away a lazy afternoon at the Picnic Lawn.



ARTIST'S IMPRESSION

MEANDERING RIVULET

Let the sounds of gentle streams accompany you while you stretch out on the Yoga Deck

HAMMOCK LOUNGE

Have a lulling siesta on the hammock, or simply spend some quiet time with oneself

YOGA DECK

Be one with the outdoors and nature while you perfect that pose on the Yoga Deck

PICNIC LAWN

Bring a basket, throw in some bites and wine and have a romantic picnic with your loved ones

THE PUNGGOL OF NOW,
FUTURE
AND BEYOND

THE DYNAMIC

PUNGGOL TRANSFORMATION

RIGHT AT HOME

Punggol is fast shaping into one of the island-state’s most sought-after residential estates. Characterised by waterfront estates and vast tracts of nature, Punggol has a unique modern-yet-rustic charm. Future developments will deliver a greater variety of housing options, more efficient transport connectivity, as well as an extensive network of recreational possibilities that will redefine living spaces of the future.



FUTURE RUSTIC PARK
ON CONEY ISLAND



INTRA-TOWN
CYCLING NETWORK



PUNGGOL
RANCH



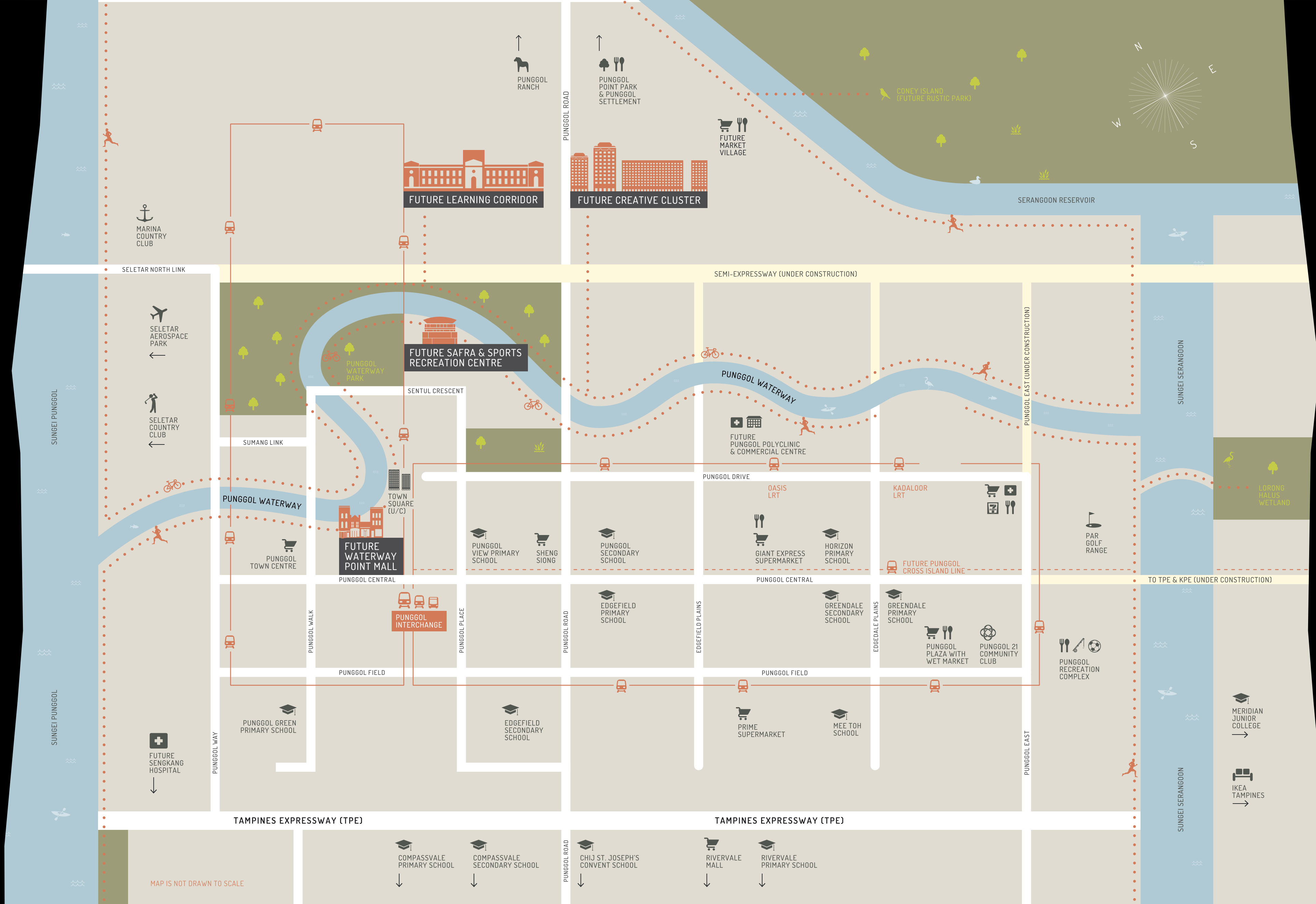
PUNGGOL
WATERWAY PARK



MARINA
COUNTRY CLUB



KAYAKING AT
PUNGGOL WATERWAY



THE PROMISE OF
SINGAPORE'S HIGHLY-ANTICIPATED
REGIONAL TOWN CENTRE

Punggol is earmarked to be Singapore's new model for town planning with first-class urban infrastructure and signature sea-front housing. Residents can look forward to the Waterway Point which is set to be an iconic shopping destination as well as the new SAFRA Punggol boasting a first-of-its-kind indoor water playground in Singapore. The future gets more promising when the Creative Cluster, Learning Corridor and new MRT connections converge in this highly-anticipated regional town centre.



2015



**WATERWAY
POINT**

An upcoming shopping mall located in Punggol New Town, just beside the Punggol MRT/LRT Station.

2016



**SAFRA
PUNGGOL**

A 5-storey clubhouse that will boast a first-of-its-kind indoor water playground.

2020



**THE CREATIVE CLUSTER
& LEARNING CORRIDOR**

The Creative Cluster is a new district that will house innovative industries with green spaces. Connected to it will be the Learning Corridor that will host a new tertiary institution.

2030



**PUNGGOL REGIONAL
SPORTS CENTRE**

A new Regional Sports Centre that will cater to a wide range of competitive sports and events, as well as having activities integrated with Punggol's waterways.

2030



**CROSS ISLAND LINE
(CRL)**

The Cross Island Line and extension of the North East Line to serve the Punggol Downtown.

A HOME CHARACTERISED

BY THOUGHTFUL INTERIORS

AND QUALITY FITTINGS

A WELL-PROPORTIONED
LIVING SPACE ENLIVENED
BY FAMILY BONDING MOMENTS



THE ELEGANT
AND FUNCTIONAL
MODERN KITCHEN



KITCHEN

The kitchen epitomises clean modern design using a colour palette similar to the living area. Cabinets are finished in a richly coloured timber laminate adding visual variety to the space. The back splash feature wall uses the same marble look-alike tile from the living area, adding subtle touches of elegance.

MATERIALS

- ① Top-hung cabinet
- ② Bottom cabinet laminate
- ③ Kitchen back splash wall tile
- ④ Counter top
- ⑤ Floor tile



THE RICH INTERPLAY OF MATERIALS AND TEXTURES



BATHROOM

The bathroom will be designed to become a sensual experience using rich materials and textures. A key highlight will be the colourful mosaic-tiled feature wall in a playful geometric composition.

MATERIALS

- ① Floor and shower feature wall tile
- ② Vanity feature wall mosaic tile
- ③ Wall tile
- ④ Vanity cabinet (Outer)
- ⑤ Vanity cabinet (Inner)
- ⑥ Vanity top

A WIDE SELECTION
OF CHOICE UNITS
FOR EVERY PREFERENCE



UNIT DISTRIBUTION

3-BEDROOM
TYPE A, Ag

3-BEDROOM PREMIUM
TYPE B1, B1g

3-BEDROOM PREMIUM
TYPE B2, B2g

3-BEDROOM PREMIUM
TYPE B3, B3g

3-BEDROOM PREMIUM
TYPE B4, B4g

4-BEDROOM
TYPE C1, C1g

4-BEDROOM
TYPE C2, C2g

4-BEDROOM PREMIUM
TYPE D

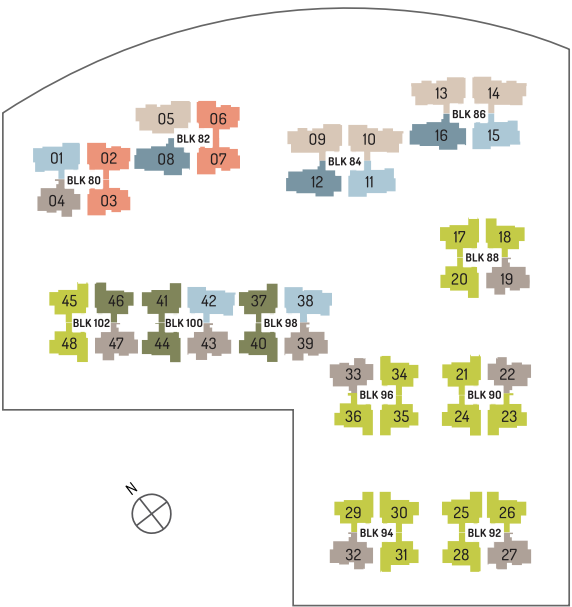
5-BEDROOM PENTHOUSE
TYPE E

BLOCK 80				
UNIT LEVEL	01	02	04	03
17				
16				
15				
14				
13	C1	B1	A	B1
12	C1	B1	A	B1
11	C1	B1	A	B1
10	C1	B1	A	B1
9	C1	B1	A	B1
8	C1	B1	A	B1
7	C1	B1	A	B1
6	C1	B1	A	B1
5	C1	B1	A	B1
4	C1	B1	A	B1
3	C1	B1	A	B1
2	FACILITIES	B1	A	B1
1		B1		B1g

BLOCK 82				
UNIT LEVEL	05	06	08	07
17				
16				
15	E	B1	C2	B1
14	E	B1	C2	B1
13	D	B1	C2	B1
12	D	B1	C2	B1
11	D	B1	C2	B1
10	D	B1	C2	B1
9	D	B1	C2	B1
8	D	B1	C2	B1
7	D	B1	C2	B1
6	D	B1	C2	B1
5	D	B1	C2	B1
4	D	B1	C2	B1
3	D	B1	C2	B1
2	D	FACILITIES	C2	
1	FACILITIES		C2g	

BLOCK 84				
UNIT LEVEL	09	10	12	11
17	E	E	C2	C1
16	E	E	C2	C1
15	D	D	C2	C1
14	D	D	C2	C1
13	D	D	C2	C1
12	D	D	C2	C1
11	D	D	C2	C1
10	D	D	C2	C1
9	D	D	C2	C1
8	D	D	C2	C1
7	D	D	C2	C1
6	D	D	C2	C1
5	D	D	C2	C1
4	D	D	C2	C1
3	D	D	C2	C1
2	D	D	C2	C1
1	D	D	C2g	C1g

BLOCK 86				
UNIT LEVEL	13	14	16	15
17				
16	E	E	C2	C1
15	E	E	C2	C1
14	D	D	C2	C1
13	D	D	C2	C1
12	D	D	C2	C1
11	D	D	C2	C1
10	D	D	C2	C1
9	D	D	C2	C1
8	D	D	C2	C1
7	D	D	C2	C1
6	D	D	C2	C1
5	D	D	C2	C1
4	D	D	C2	C1
3	D	D	C2	C1
2	FACILITIES	D	C2	C1
1		FACILITIES	C2g	C1g



UNIT DISTRIBUTION

3-BEDROOM
TYPE A, Ag

3-BEDROOM PREMIUM
TYPE B1, B1g

3-BEDROOM PREMIUM
TYPE B2, B2g

3-BEDROOM PREMIUM
TYPE B3, B3g

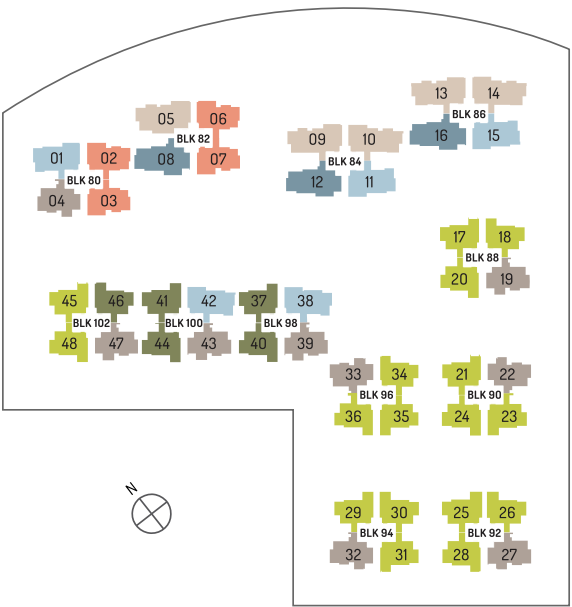
3-BEDROOM PREMIUM
TYPE B4, B4g

4-BEDROOM
TYPE C1, C1g

4-BEDROOM
TYPE C2, C2g

4-BEDROOM PREMIUM
TYPE D

5-BEDROOM PENTHOUSE
TYPE E



BLOCK 102				
UNIT LEVEL	45	46	48	47
17	B2	B3	B2	A
16	B2	B3	B2	A
15	B2	B3	B2	A
14	B2	B3	B2	A
13	B2	B3	B2	A
12	B2	B3	B2	A
11	B2	B3	B2	A
10	B2	B3	B2	A
9	B2	B3	B2	A
8	B2	B3	B2	A
7	B2	B3	B2	A
6	B2	B3	B2	A
5	B2	B3	B2	A
4	B2	B3	B2	A
3	B2	B3	B2	A
2		B3		A
1		B3g		

BLOCK 100				
UNIT LEVEL	41	42	44	43
17	B3	C1	B3	A
16	B3	C1	B3	A
15	B3	C1	B3	A
14	B3	C1	B3	A
13	B3	C1	B3	A
12	B3	C1	B3	A
11	B3	C1	B3	A
10	B3	C1	B3	A
9	B3	C1	B3	A
8	B3	C1	B3	A
7	B3	C1	B3	A
6	B3	C1	B3	A
5	B3	C1	B3	A
4	B3	C1	B3	A
3	B3	C1	B3	A
2	B3	C1	B3	A
1	B3g	C1g		Ag

BLOCK 98				
UNIT LEVEL	37	38	40	39
17	B3	C1	B3	A
16	B3	C1	B3	A
15	B3	C1	B3	A
14	B3	C1	B3	A
13	B3	C1	B3	A
12	B3	C1	B3	A
11	B3	C1	B3	A
10	B3	C1	B3	A
9	B3	C1	B3	A
8	B3	C1	B3	A
7	B3	C1	B3	A
6	B3	C1	B3	A
5	B3	C1	B3	A
4	B3	C1	B3	A
3	B3	C1	B3	A
2	B3	C1	B3	A
1	B3g	C1g	B3g	Ag

BLOCK 88				
UNIT LEVEL	17	18	20	19
17	B2	B2	B2	A
16	B2	B2	B2	A
15	B2	B2	B2	A
14	B2	B2	B2	A
13	B2	B2	B2	A
12	B2	B2	B2	A
11	B2	B2	B2	A
10	B2	B2	B2	A
9	B2	B2	B2	A
8	B2	B2	B2	A
7	B2	B2	B2	A
6	B2	B2	B2	A
5	B2	B2	B2	A
4	B2	B2	B2	A
3	B2	B2	B2	A
2	B2	B2	B2	A
1	B2g	B2g	B2g	Ag

UNIT DISTRIBUTION

3-BEDROOM
TYPE A, Ag

3-BEDROOM PREMIUM
TYPE B1, B1g

3-BEDROOM PREMIUM
TYPE B2, B2g

3-BEDROOM PREMIUM
TYPE B3, B3g

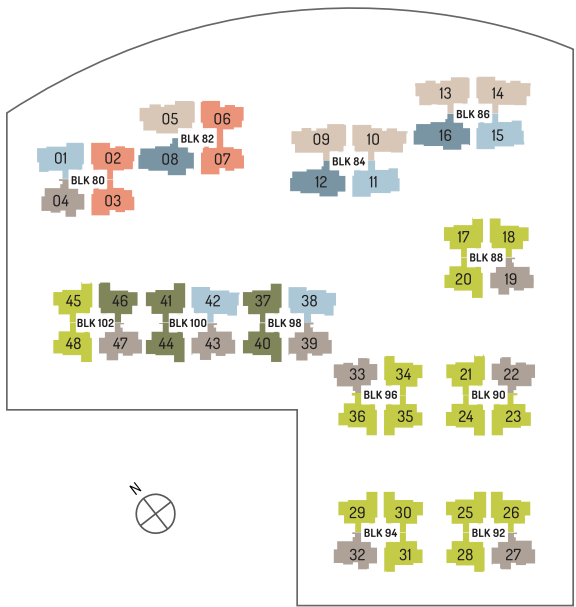
3-BEDROOM PREMIUM
TYPE B4, B4g

4-BEDROOM
TYPE C1, C1g

4-BEDROOM
TYPE C2, C2g

4-BEDROOM PREMIUM
TYPE D

5-BEDROOM PENTHOUSE
TYPE E



BLOCK 96				
UNIT LEVEL	33	34	36	35
17	A	B2	B2	B2
16	A	B2	B2	B2
15	A	B2	B2	B2
14	A	B2	B2	B2
13	A	B2	B2	B2
12	A	B2	B2	B2
11	A	B2	B2	B2
10	A	B2	B2	B2
9	A	B2	B2	B2
8	A	B2	B2	B2
7	A	B2	B2	B2
6	A	B2	B2	B2
5	A	B2	B2	B2
4	A	B2	B2	B2
3	A	B2	B2g	B2g
2	A	B4		
1	Ag	B4g		

BLOCK 90				
UNIT LEVEL	21	22	24	23
17	B2	A	B2	B2
16	B2	A	B2	B2
15	B2	A	B2	B2
14	B2	A	B2	B2
13	B2	A	B2	B2
12	B2	A	B2	B2
11	B2	A	B2	B2
10	B2	A	B2	B2
9	B2	A	B2	B2
8	B2	A	B2	B2
7	B2	A	B2	B2
6	B2	A	B2	B2
5	B2	A	B2	B2
4	B2	A	B2	B2
3	B2	A	B2g	B2g
2	B4	A		
1	B4g	Ag		

BLOCK 94				
UNIT LEVEL	29	30	32	31
17	B2	B2	A	B2
16	B2	B2	A	B2
15	B2	B2	A	B2
14	B2	B2	A	B2
13	B2	B2	A	B2
12	B2	B2	A	B2
11	B2	B2	A	B2
10	B2	B2	A	B2
9	B2	B2	A	B2
8	B2	B2	A	B2
7	B2	B2	A	B2
6	B2	B2	A	B2
5	B2	B2	A	B2
4	B2	B2	A	B2
3	B2g	B2g	A	B2
2				
1				

BLOCK 92				
UNIT LEVEL	25	26	28	27
17	B2	B2	B2	A
16	B2	B2	B2	A
15	B2	B2	B2	A
14	B2	B2	B2	A
13	B2	B2	B2	A
12	B2	B2	B2	A
11	B2	B2	B2	A
10	B2	B2	B2	A
9	B2	B2	B2	A
8	B2	B2	B2	A
7	B2	B2	B2	A
6	B2	B2	B2	A
5	B2	B2	B2	A
4	B2	B2	B2	A
3	B2g	B2g	B2	A
2				
1				

TYPE A

3-BEDROOM

93 SQM, 1001 SQFT

- BLK 80 #02-04 TO #13-04
- BLK 88 #02-19 TO #17-19 *
- BLK 90 #02-22 TO #17-22
- BLK 92 #03-27 TO #17-27 *
- BLK 94 #03-32 TO #17-32
- BLK 96 #02-33 TO #17-33 *
- BLK 98 #02-39 TO #17-39 *
- BLK 100 #02-43 TO #17-43 *
- BLK 102 #02-47 TO #17-47 *

* MIRROR-IMAGE

FIN MODULE 1

LEVEL	UNIT
04, 07, 10, 13	04
02, 05, 08, 11, 14, 17	19, 22, 33, 39, 43, 47
05, 08, 11, 14, 17	27, 32

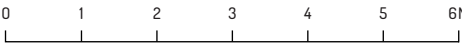
FIN MODULE 2

LEVEL	UNIT
03, 06, 09, 12	04
04, 07, 10, 13, 16	19, 22, 27, 32, 33, 39, 43, 47

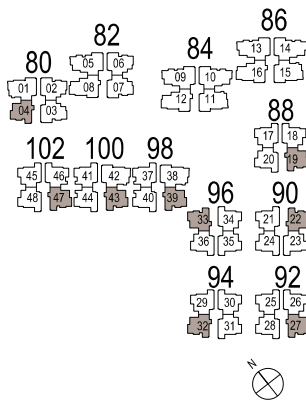
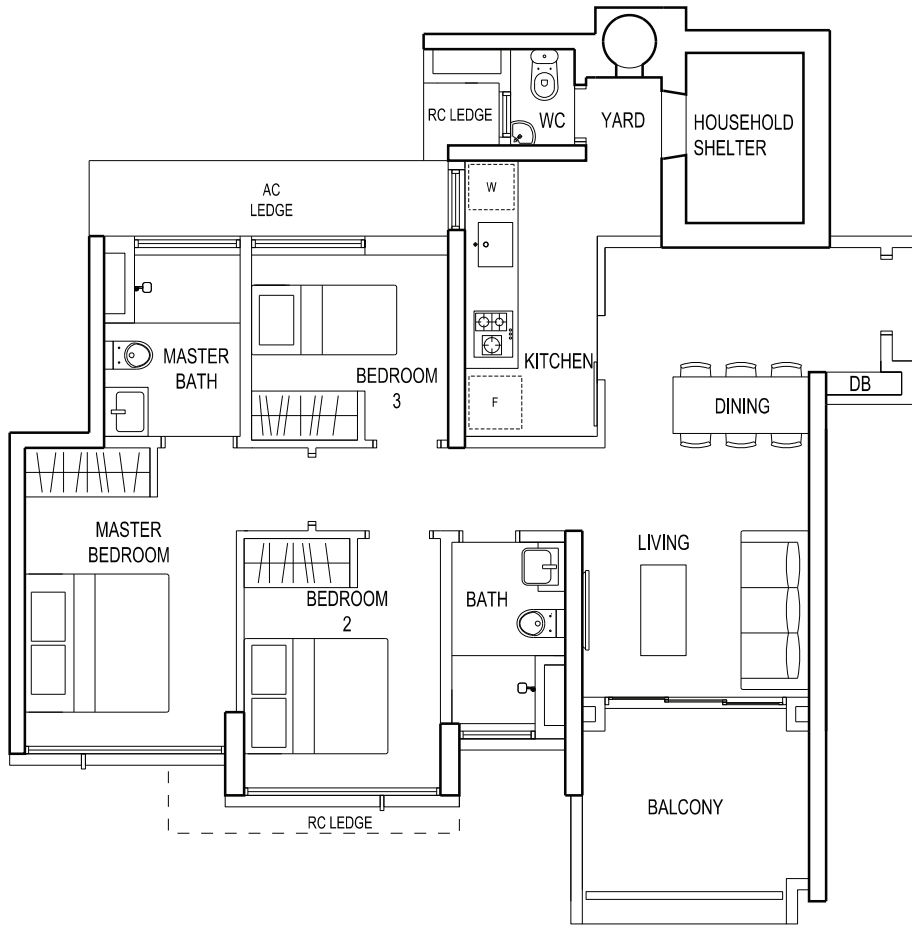
FIN MODULE 3

LEVEL	UNIT
02, 05, 08, 11	04
03, 06, 09, 12, 15	19, 22, 27, 32, 33, 39, 43, 47

SCALE BAR



THE ABOVE PLANS ARE SUBJECT TO CHANGE AS MAY BE REQUIRED BY THE RELEVANT AUTHORITY. RC LEDGE ALTERNATES IN EVERY 3 FLOORS.



TYPE Ag

3-BEDROOM

93 SQM, 1001 SQFT

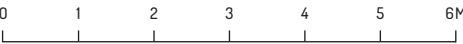
- BLK 88 #01-19 *
- BLK 90 #01-22
- BLK 96 #01-33 *
- BLK 98 #01-39 *
- BLK 100 #01-43 *

* MIRROR-IMAGE

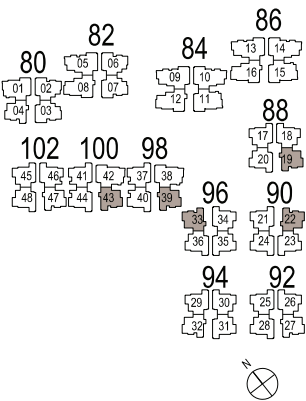
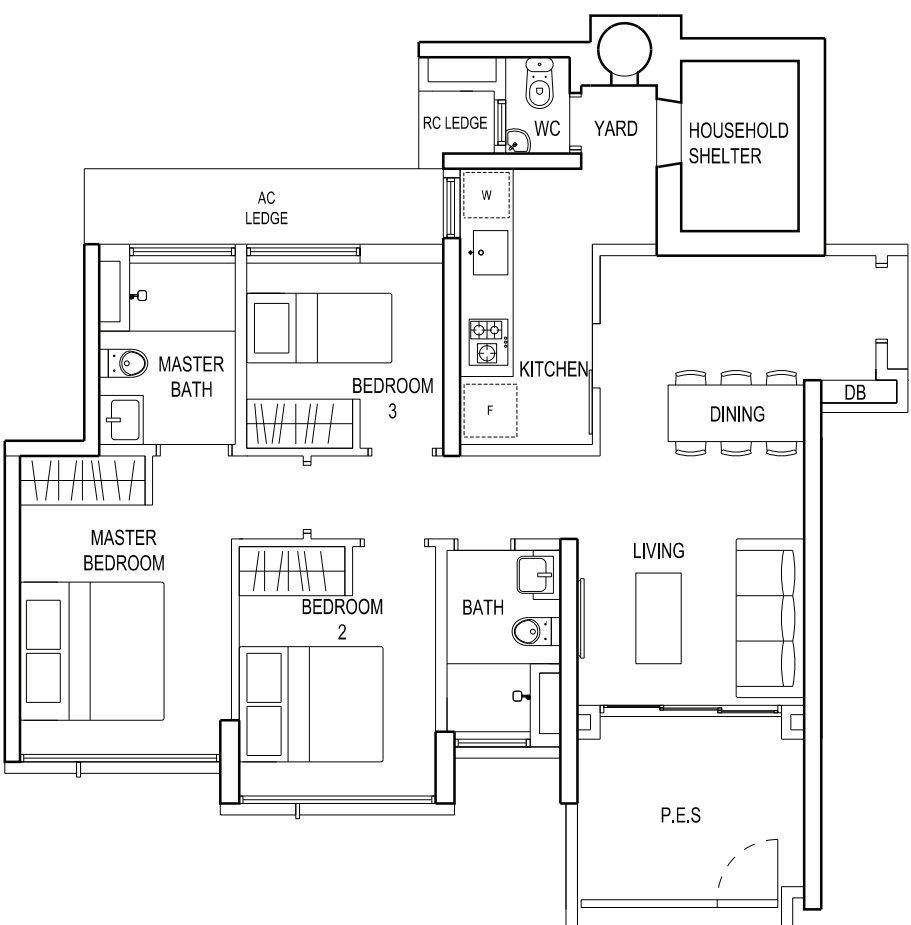
FIN MODULE 2

LEVEL	UNIT
01	19, 22, 33, 39, 43

SCALE BAR



THE ABOVE PLANS ARE SUBJECT TO CHANGE AS MAY BE REQUIRED BY THE RELEVANT AUTHORITY. RC LEDGE ALTERNATES IN EVERY 3 FLOORS.



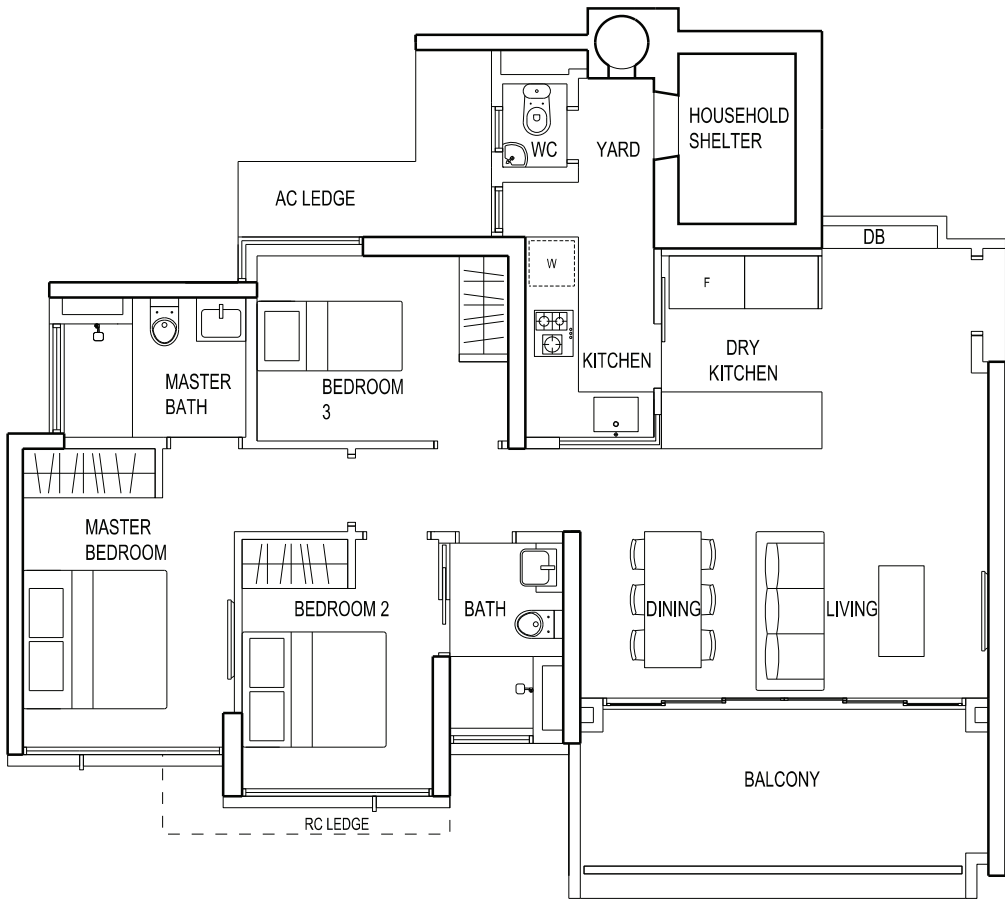
TYPE B1

3-BEDROOM PREMIUM
109 SQM, 1173 SQFT

BLK 80 #01-02 TO #13-02
#02-03 TO #13-03 *

BLK 82 #03-06 TO #15-06
#03-07 TO #15-07 *

* MIRROR-IMAGE

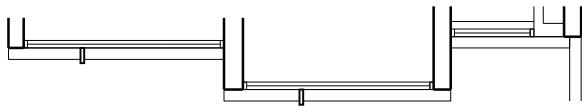


FIN MODULE 1

LEVEL	UNIT
01, 04, 07, 10, 13	02
04, 07, 10, 13	03
03, 06, 09, 12, 15	06, 07

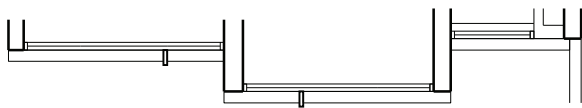
FIN MODULE 2

LEVEL	UNIT
03, 06, 09, 12	02, 03
05, 08, 11, 14	06, 07

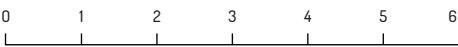


FIN MODULE 3

LEVEL	UNIT
02, 05, 08, 11	02, 03
04, 07, 10, 13	06, 07



SCALE BAR



NOTE

3.30M FLOOR-TO-FLOOR HEIGHT
#11-02, #12-02, #11-03, #12-03,
#13-06, #14-06, #13-07, #14-07

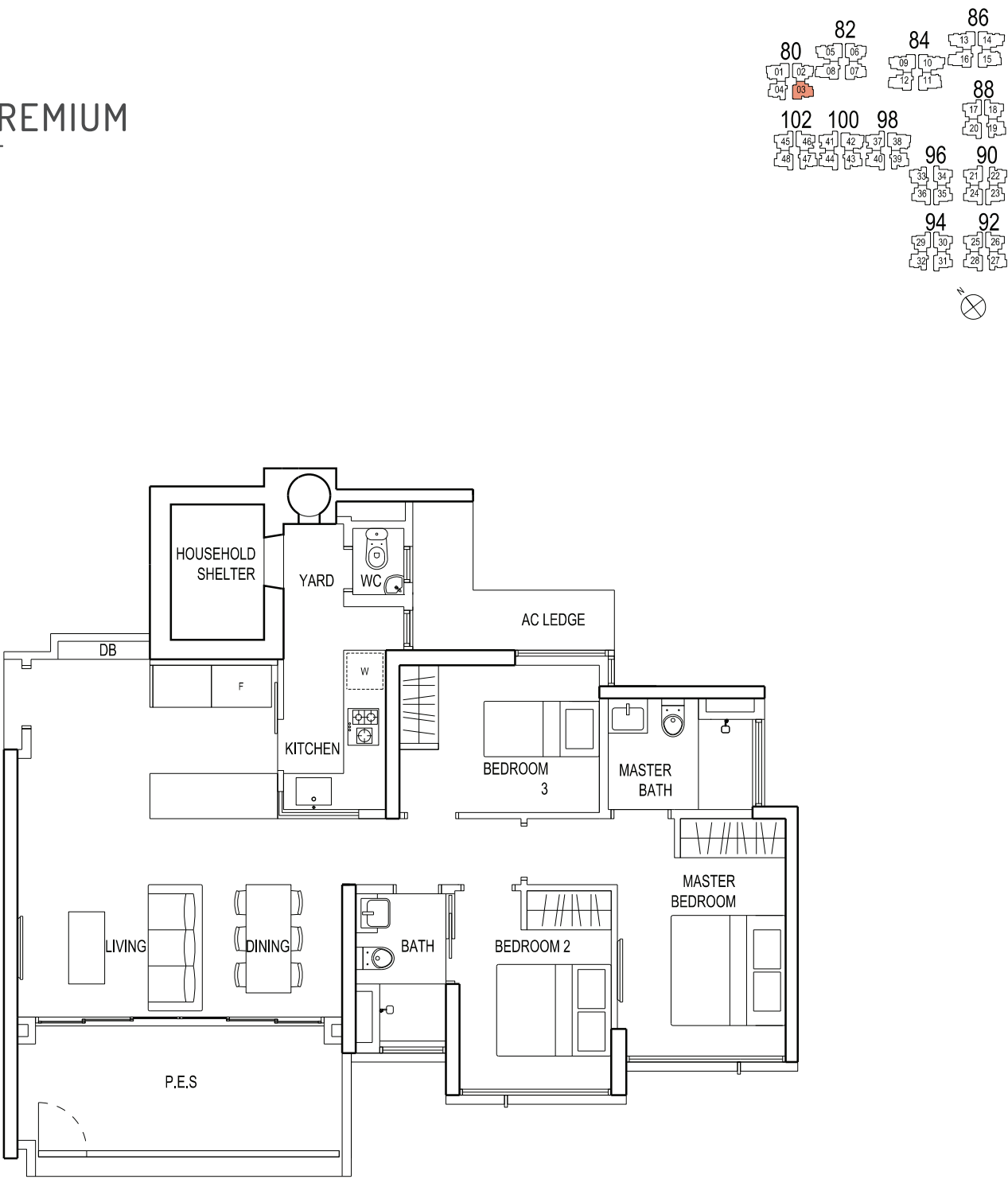
3.60M FLOOR-TO-FLOOR HEIGHT (BELOW ROOF TOP)
#13-02, #13-03, #15-06, #15-07

THE ABOVE PLANS ARE SUBJECT TO CHANGE AS MAY BE REQUIRED BY THE RELEVANT AUTHORITY. RC LEDGE ALTERNATES IN EVERY 3 FLOORS.

TYPE B1g

3-BEDROOM PREMIUM
109 SQM, 1173 SQFT

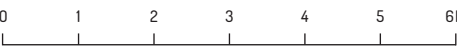
BLK 80 #01-03



FIN MODULE 1

LEVEL	UNIT
01	03

SCALE BAR



THE ABOVE PLANS ARE SUBJECT TO CHANGE AS MAY BE REQUIRED BY THE RELEVANT AUTHORITY. RC LEDGE ALTERNATES IN EVERY 3 FLOORS.

TYPE B2

3-BEDROOM PREMIUM
100 SQM, 1076 SQFT

- BLK 88 #02-17 TO #17-17 *
 #02-18 TO #17-18
 #02-20 TO #17-20
- BLK 90 #03-21 TO #17-21 *
 #04-23 TO #17-23 *
 #04-24 TO #17-24
- BLK 92 #04-25 TO #17-25 *
 #04-26 TO #17-26
 #03-28 TO #17-28
- BLK 94 #04-29 TO #17-29 *
 #04-30 TO #17-30
 #03-31 TO #17-31 *
- BLK 96 #03-34 TO #17-34
 #04-35 TO #17-35 *
 #04-36 TO #17-36
- BLK 102 #03-45 TO #17-45 *
 #03-48 TO #17-48

* MIRROR-IMAGE

FIN MODULE 1

LEVEL	UNIT
05, 08, 11, 14, 17	21, 23 ,24, 25, 26, 28, 29, 30, 31, 34, 35, 36, 45, 48
02, 05, 08, 11, 14, 17	17, 18, 20

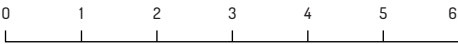
FIN MODULE 2

LEVEL	UNIT
04, 07, 10, 13, 16	17, 18, 20, 21, 23, 24, 25, 26, 28, 29, 30, 31, 34, 35, 36, 45, 48

FIN MODULE 3

LEVEL	UNIT
03, 06, 09, 12, 15	17, 18, 20, 21, 28, 31, 34, 45, 48
06, 09, 12, 15	23, 24, 25, 26, 29, 30, 35, 36

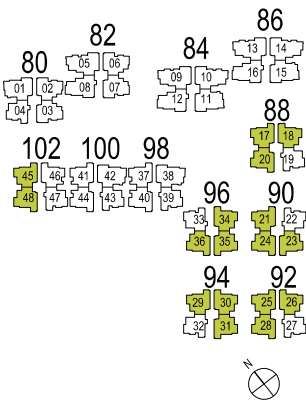
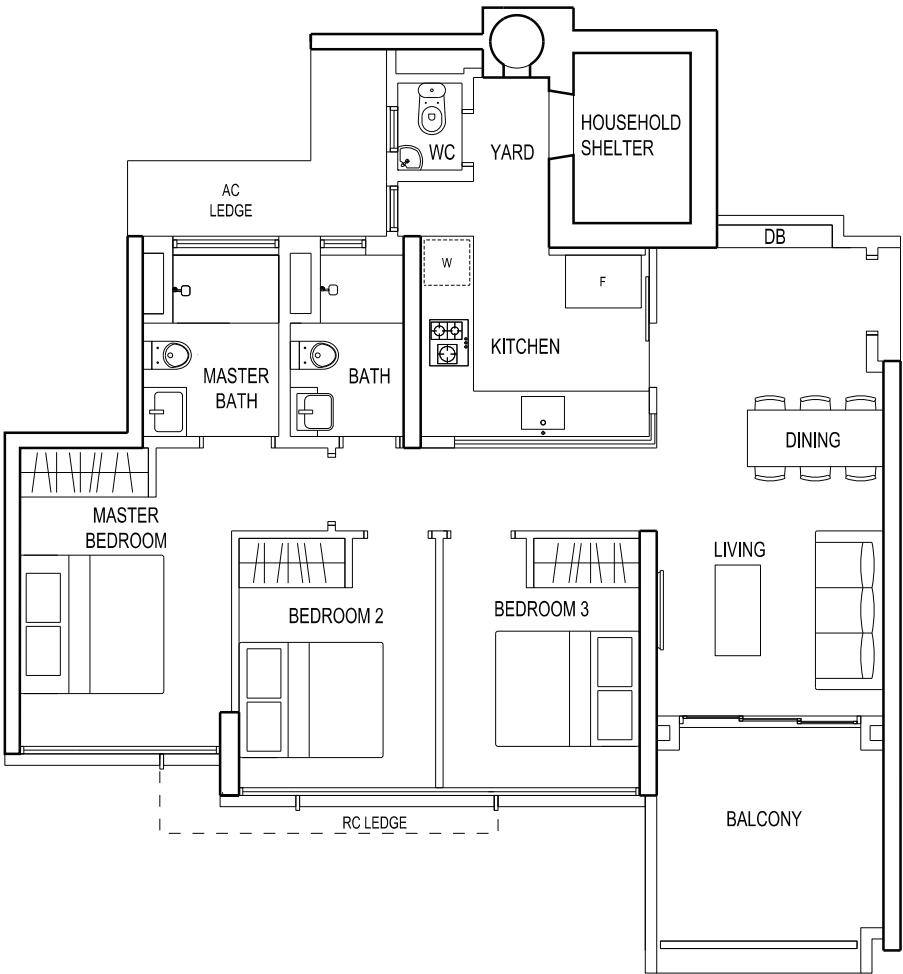
SCALE BAR



NOTE

3.25M FLOOR-TO-FLOOR HEIGHT (BELOW ROOF TOP)
#17-17, #17-18, #17-20, #17-21, #17-23 , #17-24, #17-25, #17-26, #17-28, #17-29, #17-30, #17-31, #17-34, #17-35, #17-36, #17-45, #17-48

THE ABOVE PLANS ARE SUBJECT TO CHANGE AS MAY BE REQUIRED BY THE RELEVANT AUTHORITY. RC LEDGE ALTERNATES IN EVERY 3 FLOORS.



TYPE B2g

3-BEDROOM PREMIUM
100 SQM, 1076 SQFT

- BLK 88 #01-17 *
 #01-18
 #01-20
- BLK 90 #03-23 *
 #03-24
- BLK 92 #03-25 *
 #03-26
- BLK 94 #03-29 *
 #03-30
- BLK 96 #03-35 *
 #03-36

* MIRROR-IMAGE

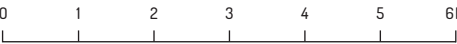
FIN MODULE 2

LEVEL	UNIT
01	17, 18, 20

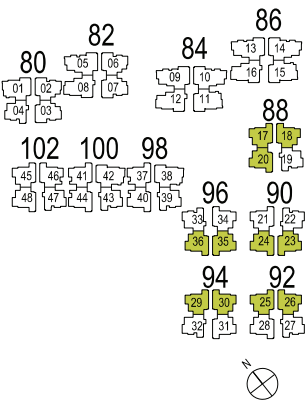
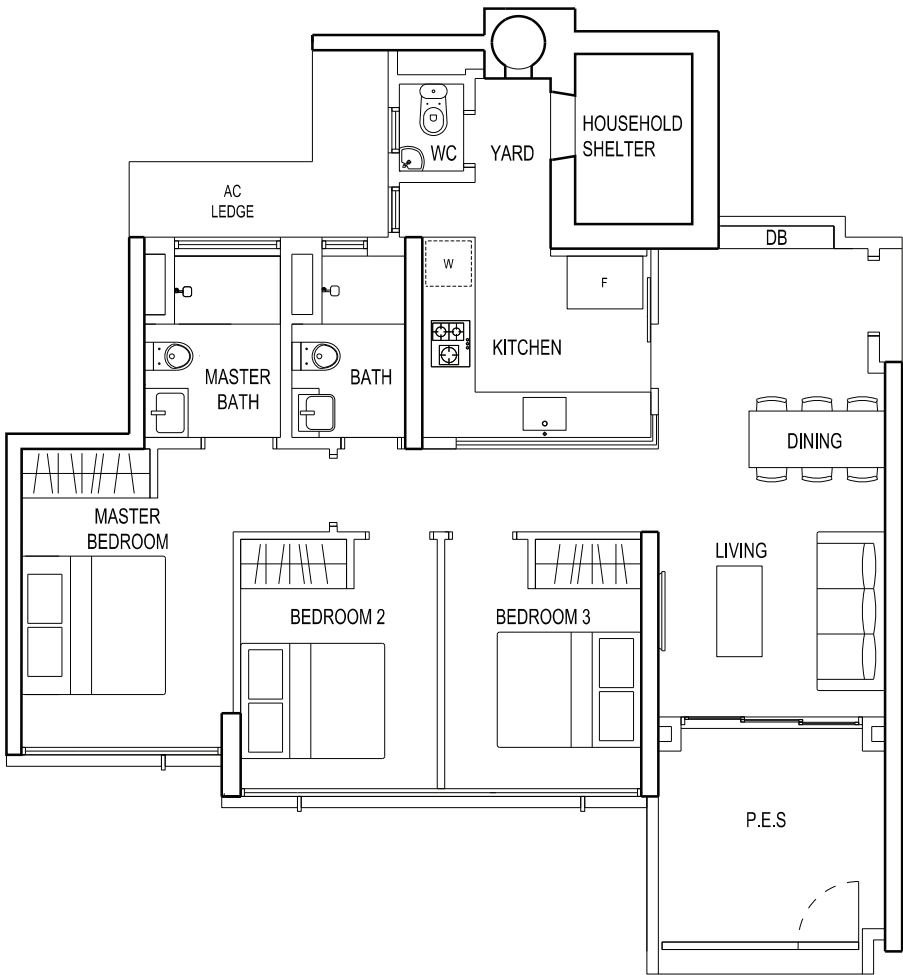
FIN MODULE 3

LEVEL	UNIT
03	23, 24, 25, 26, 29, 30, 35, 36

SCALE BAR



THE ABOVE PLANS ARE SUBJECT TO CHANGE AS MAY BE REQUIRED BY THE RELEVANT AUTHORITY. RC LEDGE ALTERNATES IN EVERY 3 FLOORS.



TYPE B3

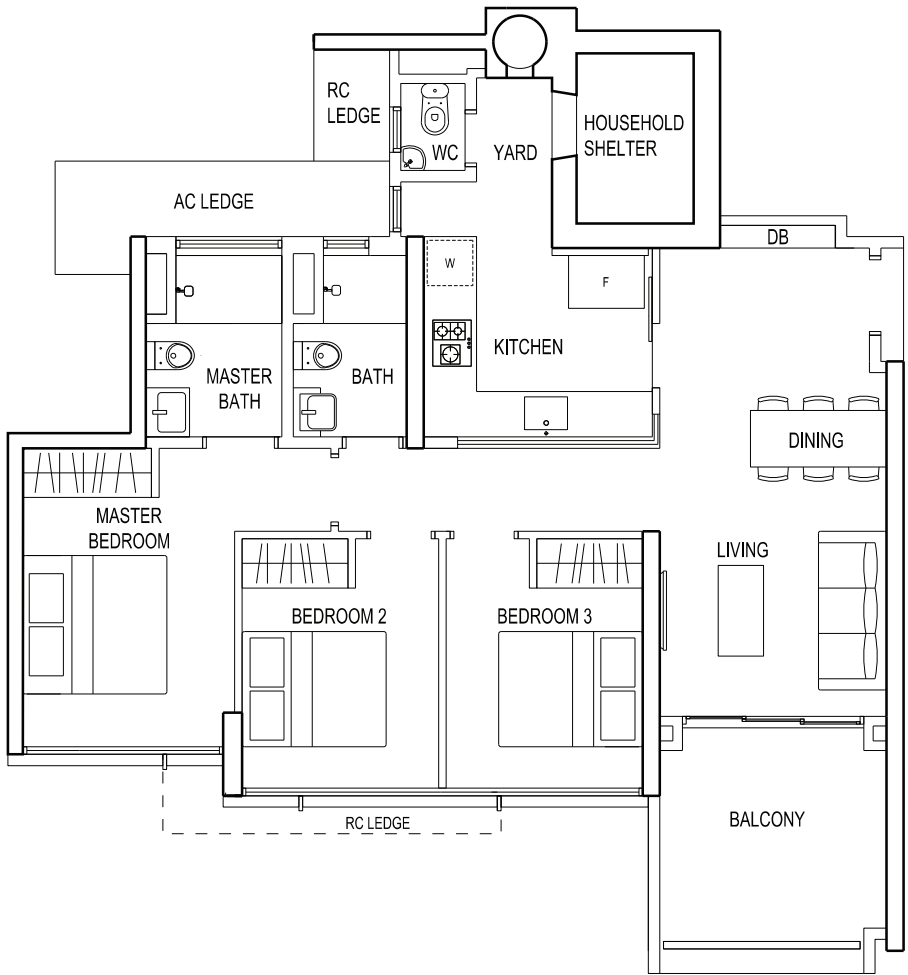
3-BEDROOM PREMIUM
100 SQM, 1076 SQFT

BLK 98 #02-37 TO #17-37 *
#02-40 TO #17-40

BLK 100 #02-41 TO #17-41 *
#02-44 TO #17-44

BLK 102 #02-46 TO #17-46

* MIRROR-IMAGE

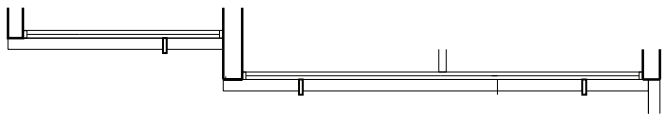


FIN MODULE 1

LEVEL	UNIT
02, 05, 08, 11, 14, 17	37, 40, 41, 44, 46

FIN MODULE 2

LEVEL	UNIT
04, 07, 10, 13, 16	37, 40, 41, 44, 46

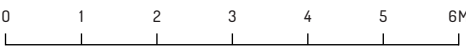


FIN MODULE 3

LEVEL	UNIT
03, 06, 09, 12, 15	37, 40, 41, 44, 46



SCALE BAR



NOTE

3.25M FLOOR-TO-FLOOR HEIGHT (BELOW ROOF TOP)
#17-37, #17-40, #17-41, #17-44, #17-46

THE ABOVE PLANS ARE SUBJECT TO CHANGE AS MAY BE REQUIRED BY THE RELEVANT AUTHORITY. RC LEDGE ALTERNATES IN EVERY 3 FLOORS.

TYPE B3g

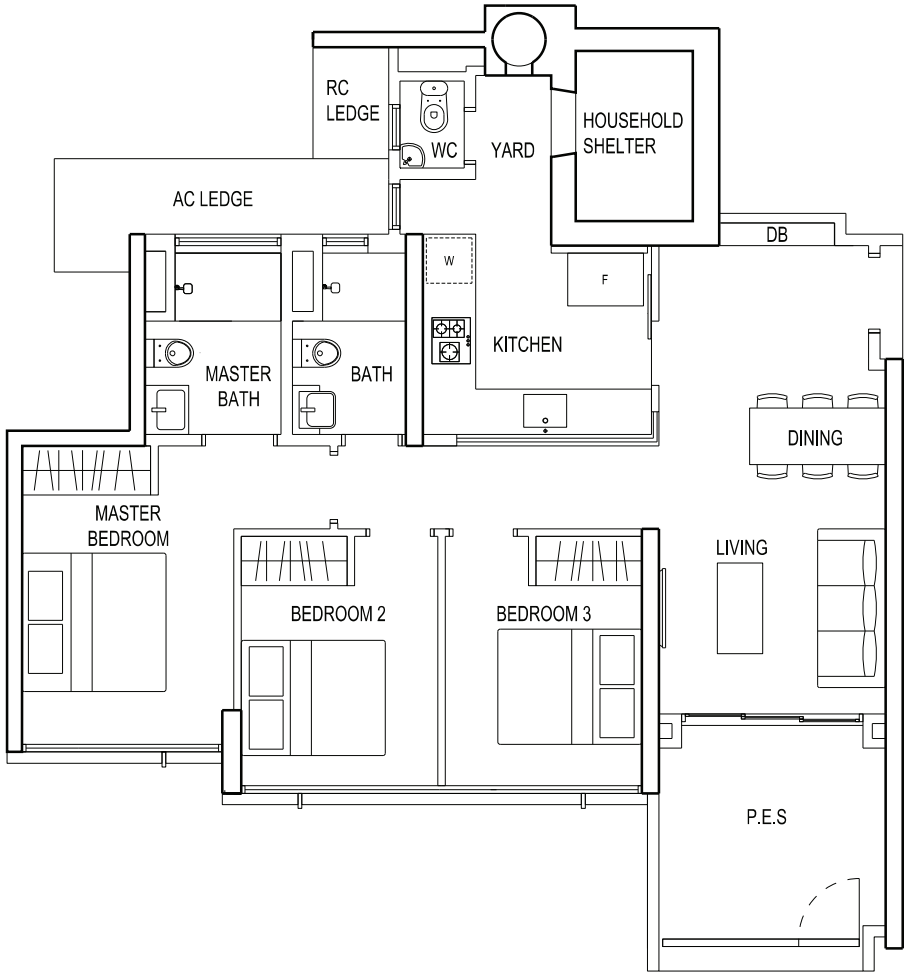
3-BEDROOM PREMIUM
100 SQM, 1076 SQFT

BLK 98 #01-37 *
#01-40

BLK 100 #01-41 *

BLK 102 #01-46

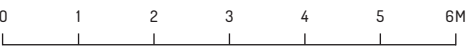
* MIRROR-IMAGE



FIN MODULE 2

LEVEL	UNIT
01	37, 40, 41, 46

SCALE BAR



THE ABOVE PLANS ARE SUBJECT TO CHANGE AS MAY BE REQUIRED BY THE RELEVANT AUTHORITY. RC LEDGE ALTERNATES IN EVERY 3 FLOORS.

TYPE B4

3-BEDROOM PREMIUM
100 SQM, 1076 SQFT

BLK 90 #02-21 *
BLK 96 #02-34

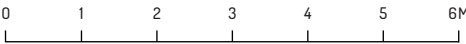
* MIRROR-IMAGE



FIN MODULE 1

LEVEL	UNIT
02	21, 34

SCALE BAR



NOTE

3.75M FLOOR-TO-FLOOR HEIGHT
#02-21, #02-34

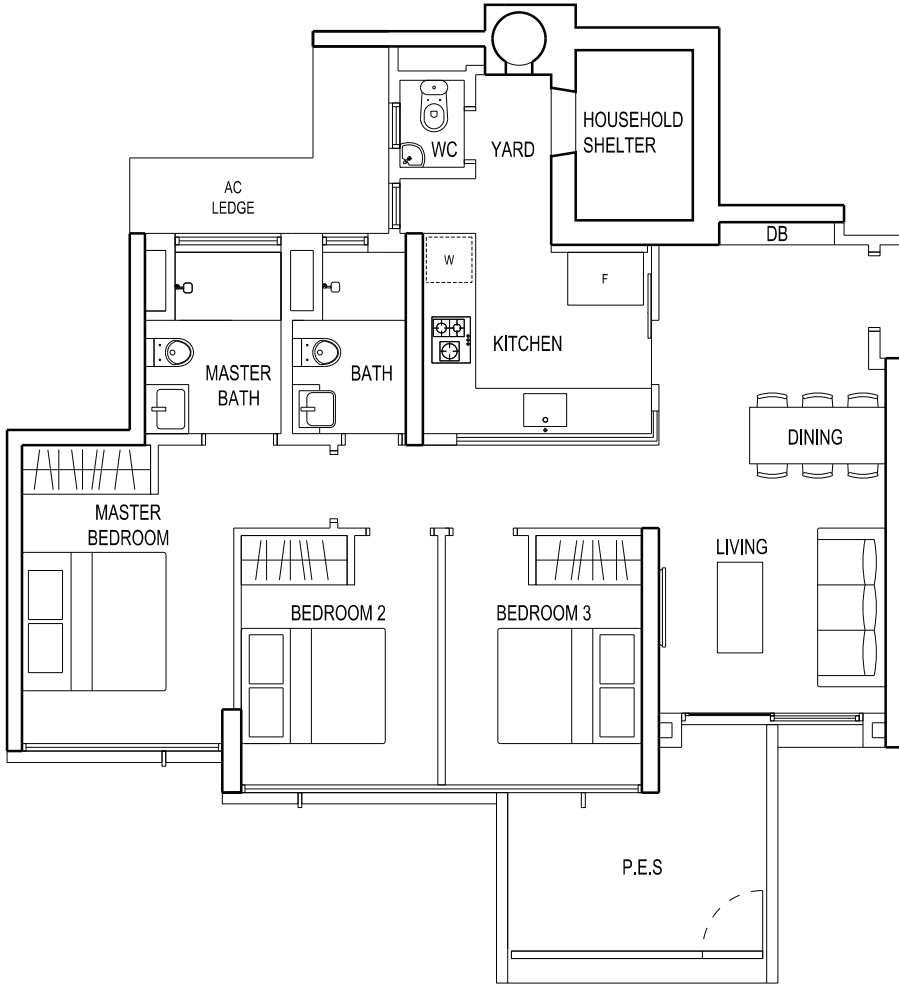
THE ABOVE PLANS ARE SUBJECT TO CHANGE AS MAY BE REQUIRED BY THE RELEVANT AUTHORITY. RC LEDGE ALTERNATES IN EVERY 3 FLOORS.

TYPE B4g

3-BEDROOM PREMIUM
100 SQM, 1076 SQFT

BLK 90 #01-21 *
BLK 96 #01-34

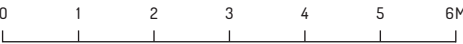
* MIRROR-IMAGE



FIN MODULE 2

LEVEL	UNIT
01	34, 21

SCALE BAR



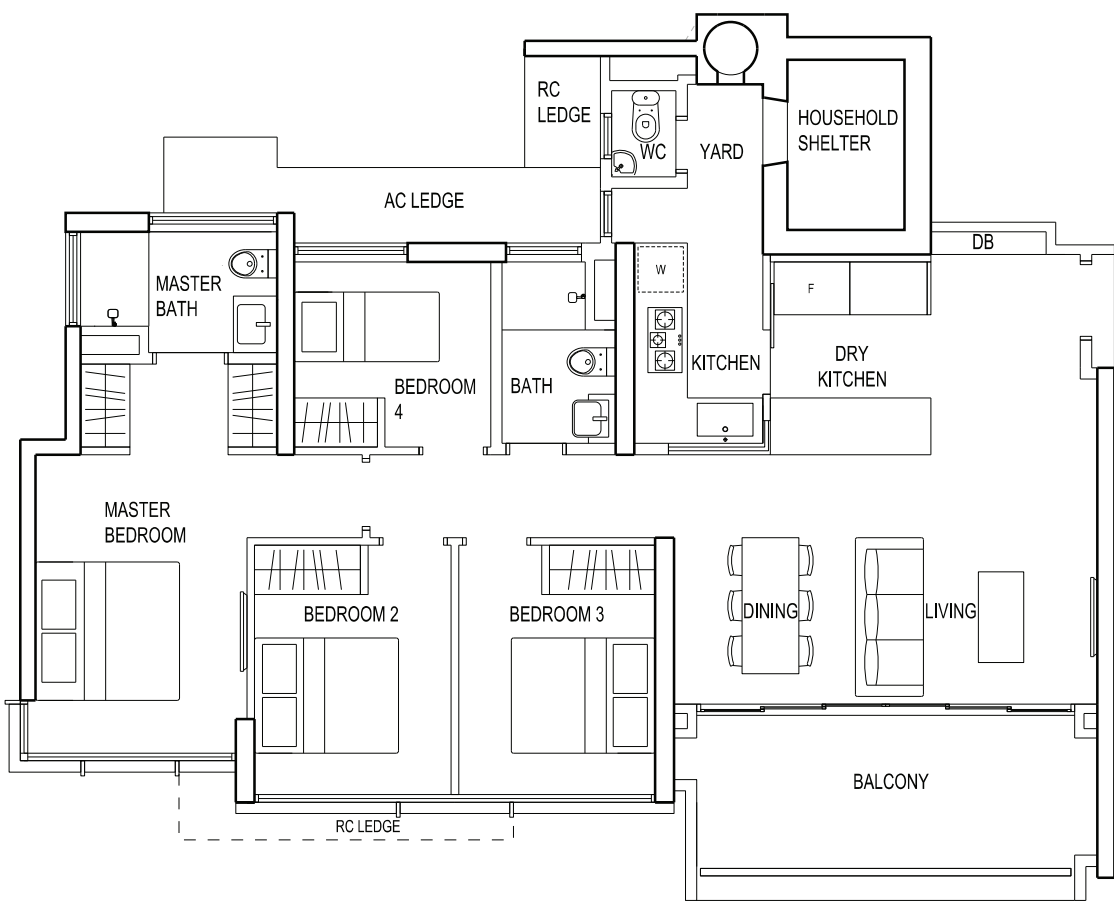
THE ABOVE PLANS ARE SUBJECT TO CHANGE AS MAY BE REQUIRED BY THE RELEVANT AUTHORITY. RC LEDGE ALTERNATES IN EVERY 3 FLOORS.

TYPE C1

4-BEDROOM
122 SQM, 1313 SQFT

- BLK 80 #03-01 TO #13-01 *
- BLK 84 #02-11 TO #17-11 *
- BLK 86 #02-15 TO #16-15 *
- BLK 98 #02-38 TO #17-38
- BLK100 #02-42 TO #17-42

* MIRROR-IMAGE

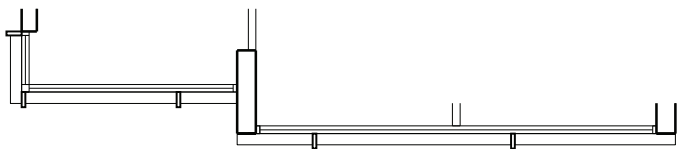


FIN MODULE 1

LEVEL	UNIT
04, 07, 10, 13	01
02, 05, 08, 11, 14, 17	11, 38, 42
04, 07, 10, 13, 16	15

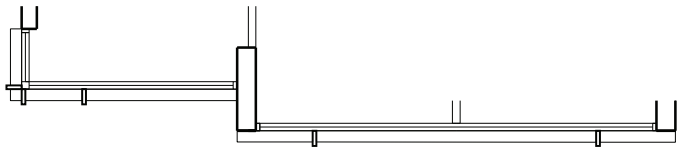
FIN MODULE 2

LEVEL	UNIT
03, 06, 09, 12	01
04, 07, 10, 13, 16	11, 38, 42
03, 06, 09, 12, 15	15

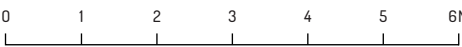


FIN MODULE 3

LEVEL	UNIT
05, 08, 11	01
03, 06, 09, 12, 15	11, 38, 42
02, 05, 08, 11, 14	15



SCALE BAR



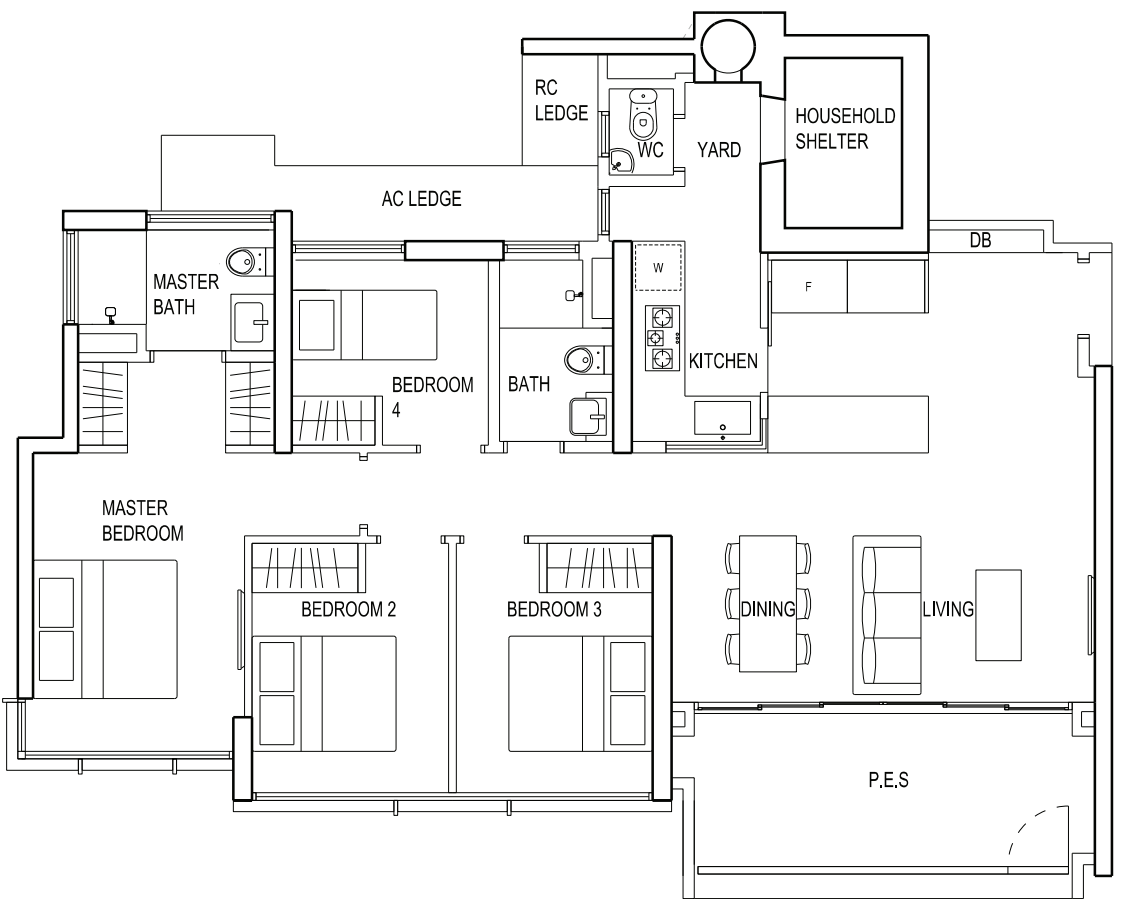
THE ABOVE PLANS ARE SUBJECT TO CHANGE AS MAY BE REQUIRED BY THE RELEVANT AUTHORITY. RC LEDGE ALTERNATES IN EVERY 3 FLOORS.

TYPE C1g

4-BEDROOM
122 SQM, 1313 SQFT

- BLK 84 #01-11 *
- BLK 86 #01-15 *
- BLK 98 #01-38
- BLK 100 #01-42

* MIRROR-IMAGE

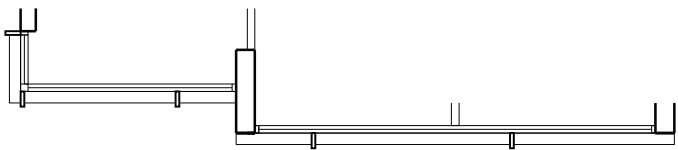


FIN MODULE 1

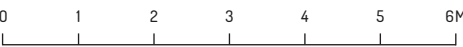
LEVEL	UNIT
01	15

FIN MODULE 2

LEVEL	UNIT
01	11, 38, 42



SCALE BAR

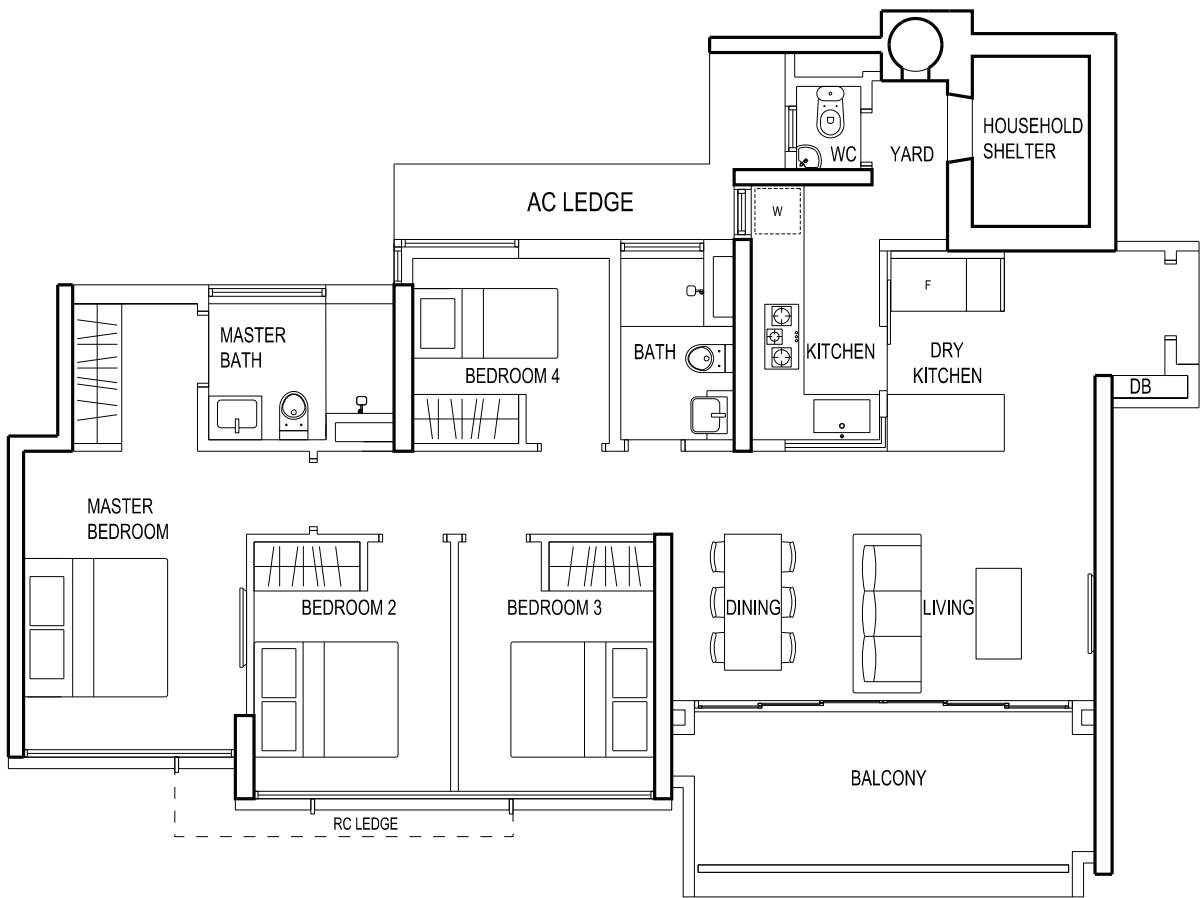
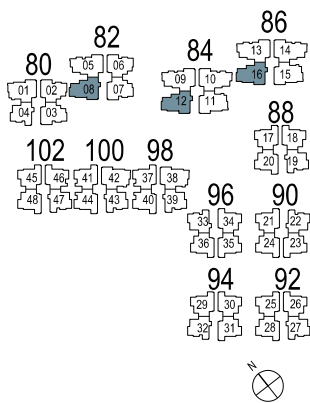


THE ABOVE PLANS ARE SUBJECT TO CHANGE AS MAY BE REQUIRED BY THE RELEVANT AUTHORITY. RC LEDGE ALTERNATES IN EVERY 3 FLOORS.

TYPE C2

4-BEDROOM
122 SQM, 1313 SQFT

BLK 82 #02-08 TO #15-08
BLK 84 #02-12 TO #17-12
BLK 86 #02-16 TO #16-16

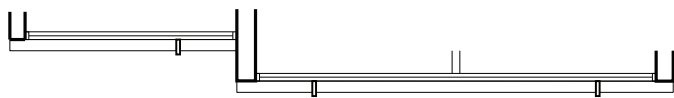


FIN MODULE 1

LEVEL	UNIT
03, 06, 09, 12, 15	08
02, 05, 08, 11, 14, 17	12
04, 07, 10, 13, 16	16

FIN MODULE 2

LEVEL	UNIT
02, 05, 08, 11, 14	08
04, 07, 10, 13, 16	12
03, 06, 09, 12, 15	16

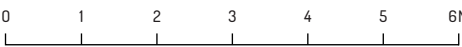


FIN MODULE 3

LEVEL	UNIT
04, 07, 10, 13	08
03, 06, 09, 12, 15	12
02, 05, 08, 11, 14	16



SCALE BAR

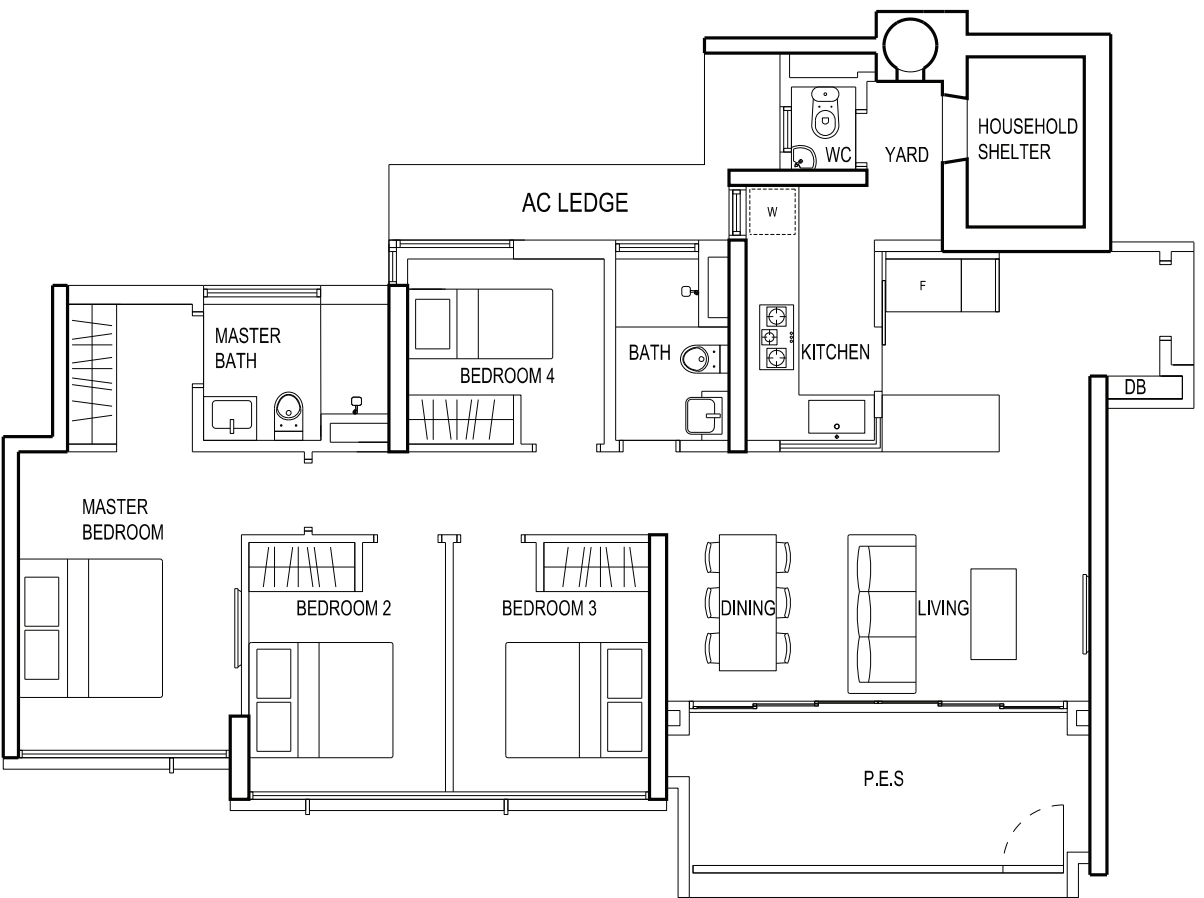
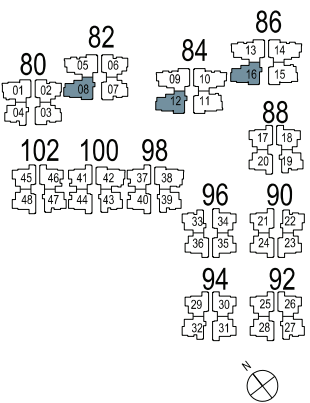


THE ABOVE PLANS ARE SUBJECT TO CHANGE AS MAY BE REQUIRED BY THE RELEVANT AUTHORITY. RC LEDGE ALTERNATES IN EVERY 3 FLOORS.

TYPE C2g

4-BEDROOM
122 SQM, 1313 SQFT

BLK 82 #01-08
BLK 84 #01-12
BLK 86 #01-16

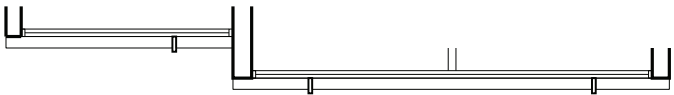


FIN MODULE 1

LEVEL	UNIT
01	16

FIN MODULE 2

LEVEL	UNIT
01	12

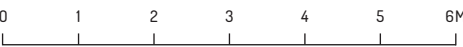


FIN MODULE 3

LEVEL	UNIT
01	08



SCALE BAR



THE ABOVE PLANS ARE SUBJECT TO CHANGE AS MAY BE REQUIRED BY THE RELEVANT AUTHORITY. RC LEDGE ALTERNATES IN EVERY 3 FLOORS.

TYPE D

4-BEDROOM PREMIUM
134 SQM, 1442 SQFT

BLK 82 #02-05 TO #13-05 *
BLK 84 #01-09 TO #15-09 *
#01-10 TO #15-10
BLK 86 #03-13 TO #14-13 *
#02-14 TO #14-14

* MIRROR-IMAGE

FIN MODULE 1

LEVEL	UNIT
03, 06, 09, 12	05
02, 05, 08, 11, 14	09, 10
04, 07, 10, 13	13, 14

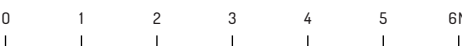
FIN MODULE 2

LEVEL	UNIT
02, 05, 08, 11	05
01, 04, 07, 10, 13	09, 10
03, 06, 09, 12	13, 14

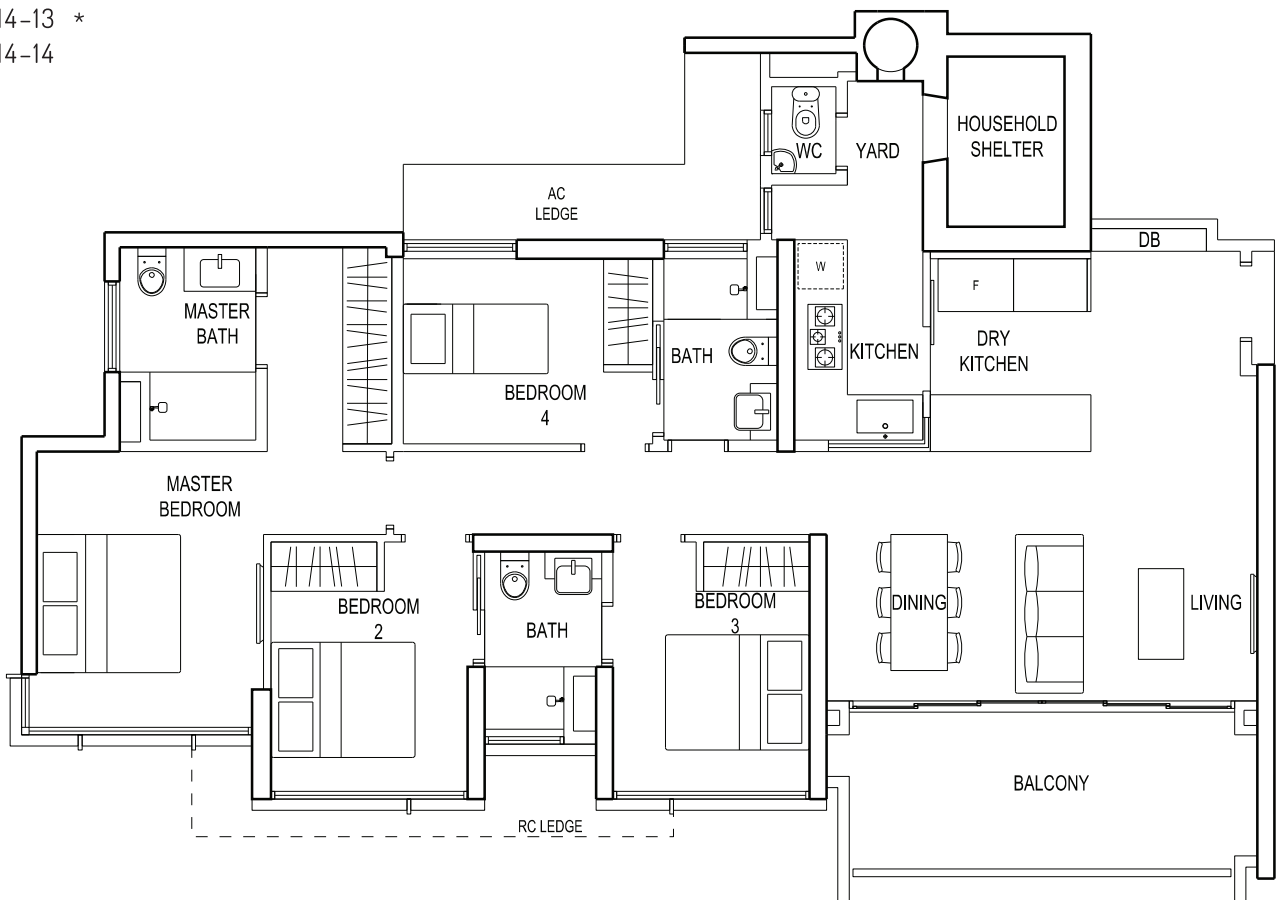
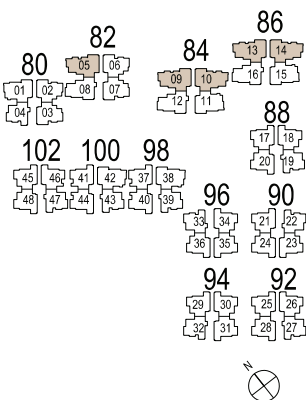
FIN MODULE 3

LEVEL	UNIT
04, 07, 10, 13	05
03, 06, 09, 12, 15	09, 10
05, 08, 11, 14	13
02, 05, 08, 11, 14	14

SCALE BAR



THE ABOVE PLANS ARE SUBJECT TO CHANGE AS MAY BE REQUIRED BY THE RELEVANT AUTHORITY. RC LEDGE ALTERNATES IN EVERY 3 FLOORS.



TYPE E

5-BEDROOM PENTHOUSE
159 SQM, 1711 SQFT

BLK 82 #14-05 TO #15-05 *
BLK 84 #16-09 TO #17-09 *
#16-10 TO #17-10
BLK 86 #15-13 TO #16-13 *
#15-14 TO #16-14

* MIRROR-IMAGE

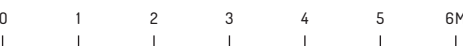
FIN MODULE 1

LEVEL	UNIT
15	05
17	09, 10
16	13, 14

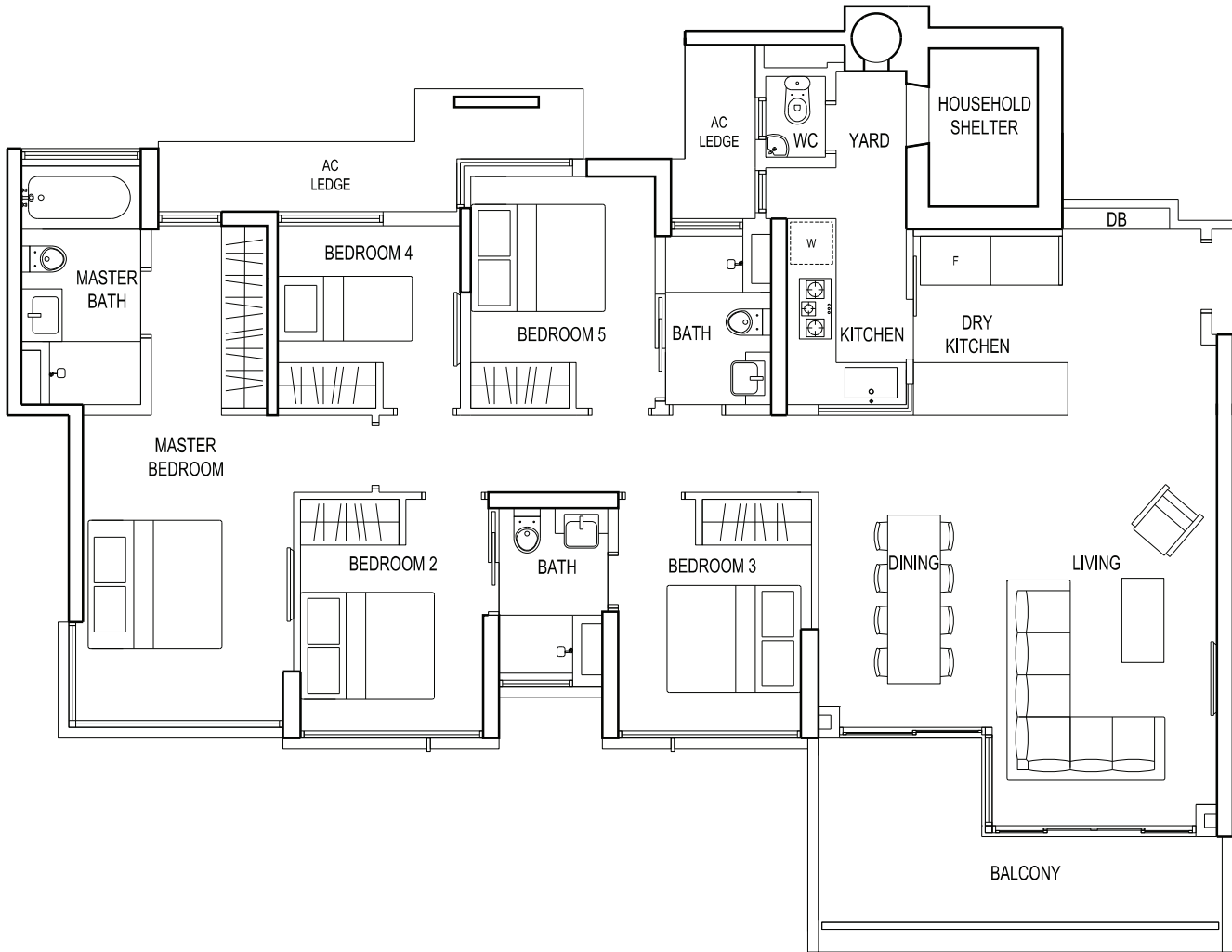
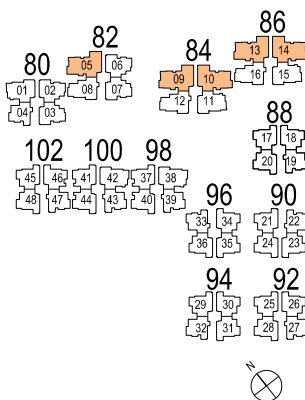
FIN MODULE 2

LEVEL	UNIT
14	05
16	09, 10
15	13, 14

SCALE BAR

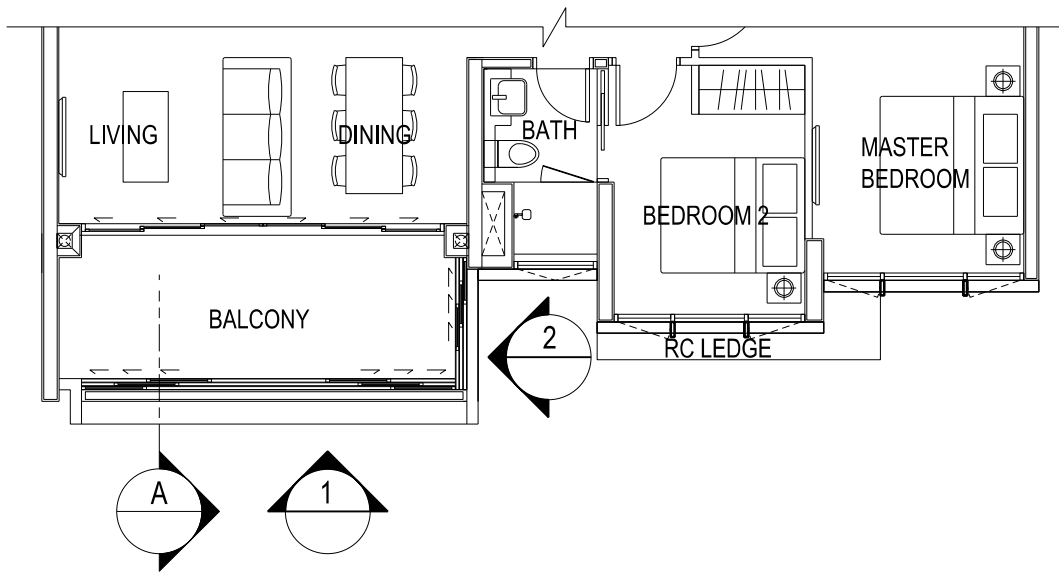


THE ABOVE PLANS ARE SUBJECT TO CHANGE AS MAY BE REQUIRED BY THE RELEVANT AUTHORITY. RC LEDGE ALTERNATES IN EVERY 3 FLOORS.



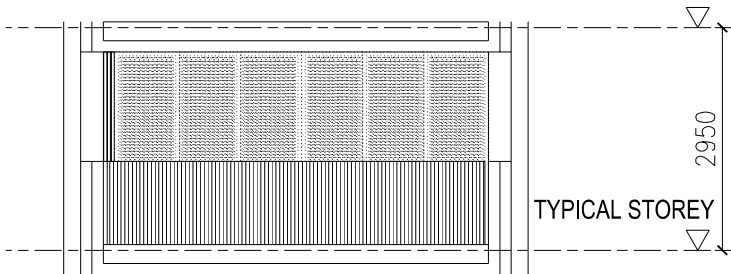
BALCONY SCREEN DETAILS

PLAN



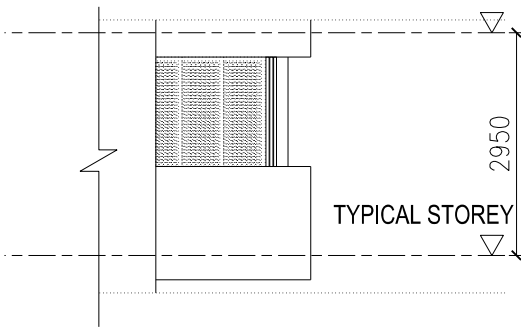
ELEVATION

①



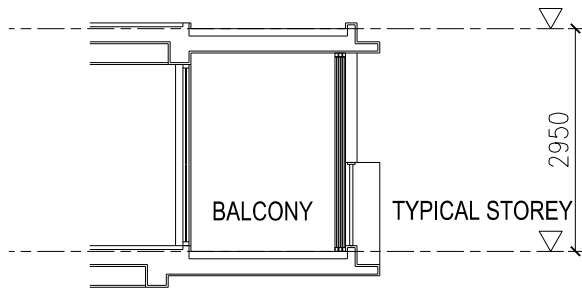
ELEVATION

②



SECTION

A



ALL DIMENSIONS TO BE VERIFIED ON SITE. TO BE INSTALLED BY PURCHASER.

A PREMIER DEVELOPMENT BY



CREATING VALUE, REALISING GROWTH

Incorporated in 1949, Kheng Leong Company began operations as an international commodity and spice trading company. Over the years, the company has kept pace with the changing business landscape and has evolved as an investment group with interests in property development and real estate investment.

Today, the Kheng Leong Group has a growing portfolio of development projects and business interests, through direct investment or collaborations with strategic partners, that spans across the Asia Pacific region from Shanghai and Hong Kong to Sydney as well as London and Los Angeles.

In a private equity capacity, the Group continually seeks out compelling investment opportunities, and has set up office in Shanghai to tap on China's growth potential. Going forward, the Group will continue to build on its strengths through synergies and leverage on competencies to realise growth potential and maximise investment returns.



DOUBLE BAY RESIDENCES



THE TOPIARY



ONE NORTH RESIDENCES



THE WOODS



THE MINTON

WWW.THETERRACE.SG
FOR ENQUIRIES 8489 4248 / 9182 1156 / 9127 4985

DEVELOPER: PEAK SQUARE PTE LTD. REGISTRATION NO. 201229785M DEVELOPER'S LICENSE NO. C1137
TENURE OF LAND: 99 YEARS COMMENCING ON 30 OCTOBER 2013 LOT NO. 02609T MK21 AT PUNGGOL DRIVE/EDGE DALE PLAINS
ESTIMATED DATE OF VACANT POSSESSION: 31 MARCH 2018 ESTIMATED DATE OF LEGAL COMPLETION: 31 MARCH 2021
BP NO. A1479-00013-2013-BP01 DATED 7 APRIL 2014 AND A1479-00013-2013-BP02 DATED 16 SEPTEMBER 2014

While every reasonable care has been taken in preparing this brochure, the developer and its agent cannot be held responsible for any inaccuracies. All statement, specifications and plans are believed to be correct but are not to be regarded as statements or representations of fact. All information and specifications are current at the time print and are subject to change as may be required and cannot form part of the contract. All floor plans are subject to any amendments approved or which may be approved by the relevant authority. Renderings and illustrations are artist's impressions only and photographs are only decor suggestions and do not necessarily represent as-built standard specifications and none can be regarded as representations of fact. Floor areas are approximate measurements and are subject to final survey. The materials and finishings to be used are subject to changes and availability. The model and the showflat are subject to changes as may be required or approved by the relevant authorities.

WWW.KHENGLEONG.COM.SG



K H E N G L E O N G C O .



THE TERRACE
THE ONLY E.C. BY THE PUNGGOL WATERWAY