

UNIT DISTRIBUTION

BLOCK 101 (737708)

| Unit Floor | 01 | 02 | 03 | 04 |
|---------------|------|--------|---------|------|
| 16 | D1 | C6 | C2A | B2 |
| 15 | D1 | C6 | C2A | B2 |
| 14 | D1 | C6 | C2A | B2 |
| 13 | D1 | C6 | C2A | B2 |
| 12 | D1 | C6 | C2A | B2 |
| 11 | D1 | C6 | C2A | B2 |
| 10 | D1 | C6 | C2A | B2 |
| 9 | D1 | C6 | C2A | B2 |
| 8 | D1 | C6 | C2A | B2 |
| 7 | D1 | C6 | C2A | B2 |
| 6 | D1 | C6 | C2A | B2 |
| 5 | D1 | C6 | C2A | B2 |
| 4 | D1 | C6 | C2A | B2 |
| 3 | D1 | C6 | C2A | B2 |
| 2 | D1 | OFFICE | C2A | B2 |
| 1 | D1-P | C6-P | FUNC.RM | B2-P |

BLOCK 103 (737709)

| Unit Floor | 05 | 06 | 07 | 08 |
|---------------|-----|-----------------|---------|-------|
| 16 | C1 | PH2(M) (#16-07) | | C5a |
| 15 | C1 | VOID | C6(M) | C5a |
| 14 | C1 | | C6(M) | C5a |
| 13 | C1 | | C6(M) | C5a |
| 12 | C1 | | C6(M) | C5a |
| 11 | C1 | C2(M) | C6(M) | C5a |
| 10 | C1 | C2(M) | C6(M) | C5a |
| 9 | C1 | C2(M) | C6(M) | C5a |
| 8 | C1 | C2(M) | C6(M) | C5a |
| 7 | C1 | C2(M) | C6(M) | C5a |
| 6 | C1 | C2(M) | C6(M) | C5a |
| 5 | C1 | C2(M) | C6(M) | C5a |
| 4 | C1 | C2(M) | C6(M) | C5a |
| 3 | C1 | C2(M) | C6(M) | C5a |
| 2 | C1 | C2(M) | C6(M) | C5a |
| 1 | C1a | C2(M)-P | C6(M)-P | C5a-P |

Note: DSTA screening / frosted glass may be provided for Block 103 unit no:
#12-05, #13-05, #14-05, #15-05, #16-05,
#12-07, #13-07, #14-07, #15-07, #16-07,
#12-08, #13-08, #14-08, #15-08, #16-08.

BLOCK 107 (737711)

| Unit Floor | 16 | 13 | 14 | 15 |
|---------------|--------------|------|--------------|------|
| 16 | PH4 (#16-16) | | PH1 (#16-15) | |
| 15 | E1 | VOID | VOID | C5 |
| 14 | E1 | | | C5 |
| 13 | E1 | C2 | C3 | C5 |
| 12 | E1 | C2 | C3 | C5 |
| 11 | E1 | C2 | C3 | C5 |
| 10 | E1 | C2 | C3 | C5 |
| 9 | E1 | C2 | C3 | C5 |
| 8 | E1 | C2 | C3 | C5 |
| 7 | E1 | C2 | C3 | C5 |
| 6 | E1 | C2 | C3 | C5 |
| 5 | E1 | C2 | C3 | C5 |
| 4 | E1 | C2 | C3 | C5 |
| 3 | E1 | C2 | C3 | C5 |
| 2 | E1 | C2 | C3 | C5 |
| 1 | E1-P | C2-P | C3-P | C5-P |

Note: DSTA screening / frosted glass may be provided for Block 107 unit no:
#14-15, #15-15, #16-15, #14-16, #15-16, #16-16.

BLOCK 109 (737712)

| Unit Floor | 20 | 17 | 18 | 19 |
|---------------|--------------|------|------|----------|
| 16 | PH2 (#16-20) | | C4 | C5a(M) |
| 15 | C6 | VOID | C4 | C5a(M) |
| 14 | C6 | | C4 | C5a(M) |
| 13 | C6 | C2 | C4 | C5a(M) |
| 12 | C6 | C2 | C4 | C5a(M) |
| 11 | C6 | C2 | C4 | C5a(M) |
| 10 | C6 | C2 | C4 | C5a(M) |
| 9 | C6 | C2 | C4 | C5a(M) |
| 8 | C6 | C2 | C4 | C5a(M) |
| 7 | C6 | C2 | C4 | C5a(M) |
| 6 | C6 | C2 | C4 | C5a(M) |
| 5 | C6 | C2 | C4 | C5a(M) |
| 4 | C6 | C2 | C4 | C5a(M) |
| 3 | C6 | C2 | C4 | C5a(M) |
| 2 | C6 | C2 | C4 | C5a(M) |
| 1 | C6-P | C2-P | C4-P | C5a(M)-P |

Note: DSTA screening / frosted glass may be provided for Block 109 unit no:
#14-18, #15-18, #16-18, #14-19, #15-19, #16-19,
#14-20, #15-20, #16-20.

BLOCK 105 (737710)

| Unit Floor | 11 | 10 | 09 | 12 |
|---------------|--------------|------|--------------|------|
| 16 | PH3 (#16-11) | | PH2 (#16-12) | |
| 15 | D1 | VOID | VOID | C6 |
| 14 | D1 | | | C6 |
| 13 | D1 | | | C6 |
| 12 | D1 | C3 | C2 | C6 |
| 11 | D1 | C3 | C2 | C6 |
| 10 | D1 | C3 | C2 | C6 |
| 9 | D1 | C3 | C2 | C6 |
| 8 | D1 | C3 | C2 | C6 |
| 7 | D1 | C3 | C2 | C6 |
| 6 | D1 | C3 | C2 | C6 |
| 5 | D1 | C3 | C2 | C6 |
| 4 | D1 | C3 | C2 | C6 |
| 3 | D1 | C3 | C2 | C6 |
| 2 | D1 | C3 | C2 | C6 |
| 1 | D1-P | C3-P | C2-P | C6-P |

Note: DSTA screening / frosted glass may be provided for Block 105 unit no:
#14-11, #15-11, #16-11,
#12-12, #13-12, #14-12, #15-12, #16-12.

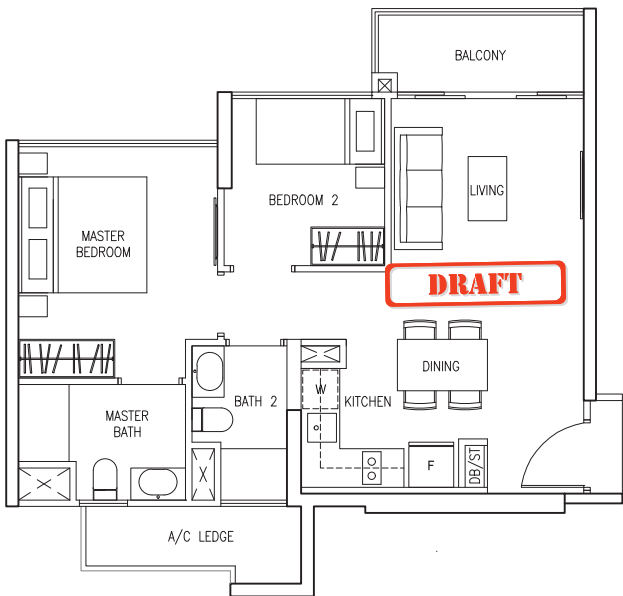
LEGEND

- 2 BEDROOM
- 3 BEDROOM
- 4 BEDROOM
- 5 BEDROOM
- 4+1 / 5 BEDROOM
(PENTHOUSE)

BLOCK 111 (737703)

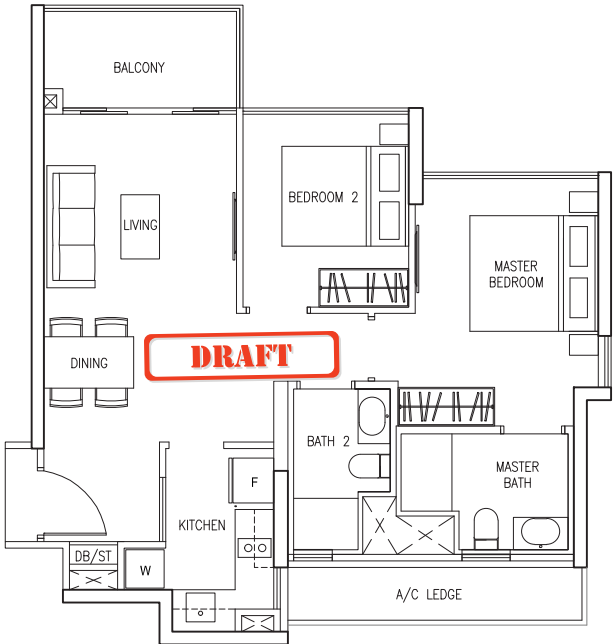
| Unit Floor | 21 | 22 | 23 | 24 |
|---------------|------|-------|------|------|
| 16 | C5 | C6a | B1 | B2 |
| 15 | C5 | C6a | B1 | B2 |
| 14 | C5 | C6a | B1 | B2 |
| 13 | C5 | C6a | B1 | B2 |
| 12 | C5 | C6a | B1 | B2 |
| 11 | C5 | C6a | B1 | B2 |
| 10 | C5 | C6a | B1 | B2 |
| 9 | C5 | C6a | B1 | B2 |
| 8 | C5 | C6a | B1 | B2 |
| 7 | C5 | C6a | B1 | B2 |
| 6 | C5 | C6a | B1 | B2 |
| 5 | C5 | C6a | B1 | B2 |
| 4 | C5 | C6a | B1 | B2 |
| 3 | C5 | C6a | B1 | B2 |
| 2 | VOID | C6a | B1 | B2 |
| 1 | C5-P | C6a-P | B1-P | VOID |

2 BEDROOM



TYPE B1

63 sq m/ 678 sq ft
#02-23 to #16-23



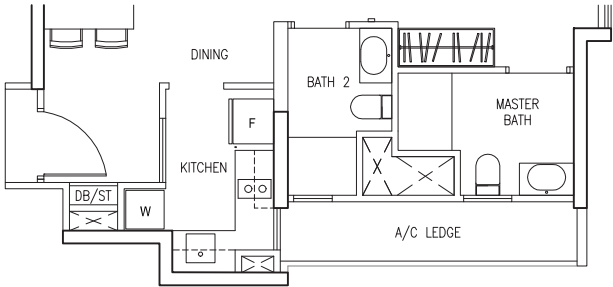
TYPE B2

70 sq m/ 753 sq ft
#02-04 to #16-04
#02-24 to #16-24



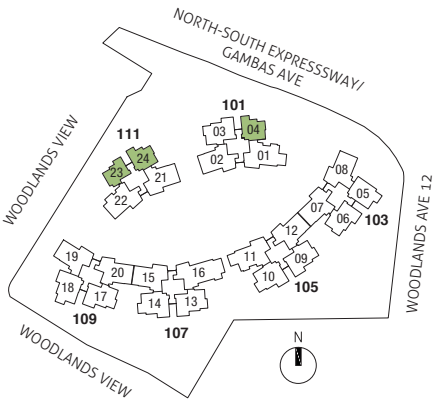
TYPE B1-P

63 sq m/ 678 sq ft
#01-23



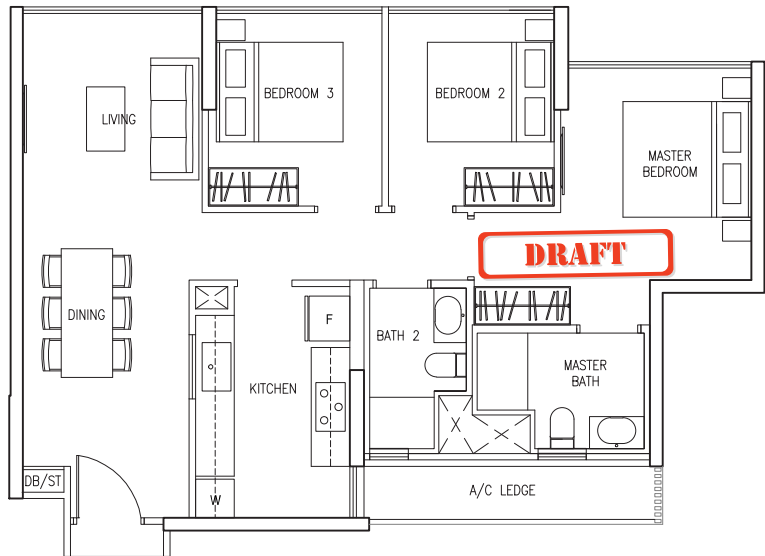
TYPE B2-P

70 sq m/ 753 sq ft
#01-04



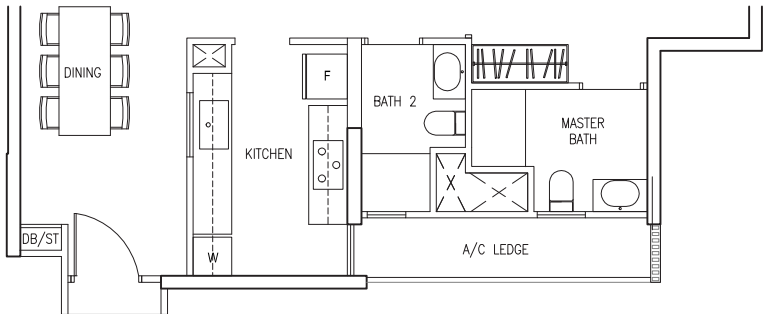
Area includes A/C ledge, balcony and PES where applicable. Orientations and facings will differ depending on the unit you are purchasing. Please refer to the key plan. The plans are subjected to change as may be required or approved by relevant authorities. All areas are approximate and subject to final survey. The developer and its agents cannot be held liable for any inaccuracies.

3 BEDROOM



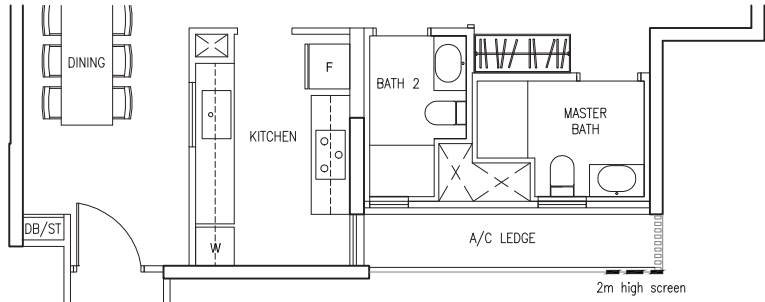
TYPE C1

83 sq m/ 893 sq ft
#02-05 to #16-05, #11-05

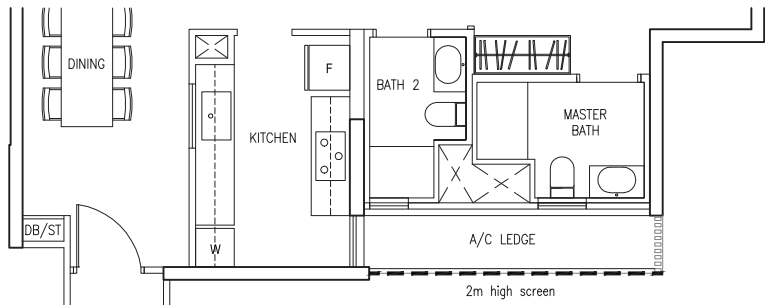


TYPE C1a

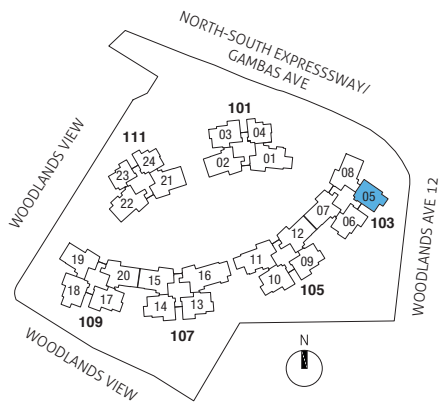
83 sq m/ 893 sq ft
#01-05



#12-05 to #15-05*



#16-05*



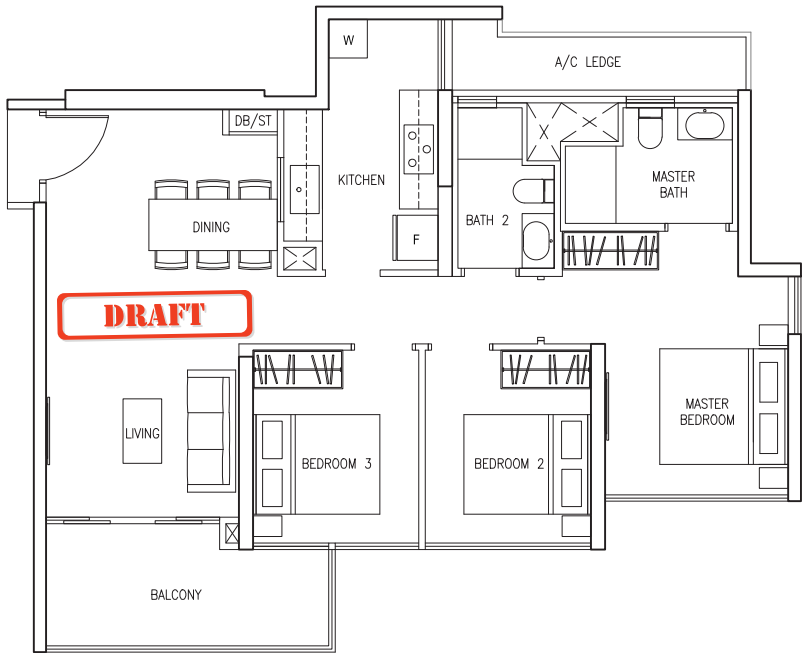
Area includes A/C ledge, balcony and PES where applicable. Orientations and facings will differ depending on the unit you are purchasing. Please refer to the key plan. The plans are subjected to change as may be required or approved by relevant authorities. All areas are approximate and subject to final survey. The developer and its agents cannot be held liable for any inaccuracies.

3 BEDROOM

TYPE C2 / C2(M)

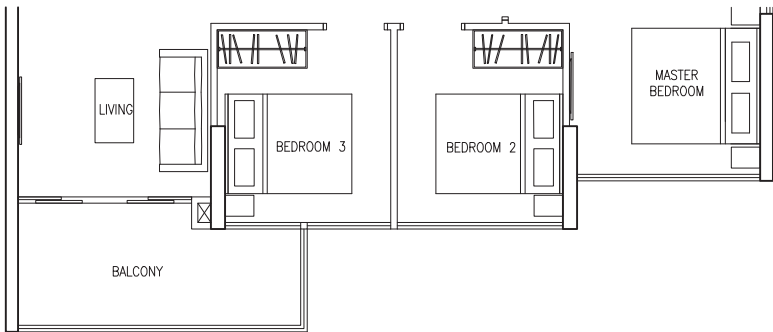
92 sq m/ 990 sq ft
#02-09 to #11-09
#02-13 to #13-13
#02-17 to #13-17

C2(M) - Mirror Units
#02-06 to #11-06 (mirror)



TYPE C2a

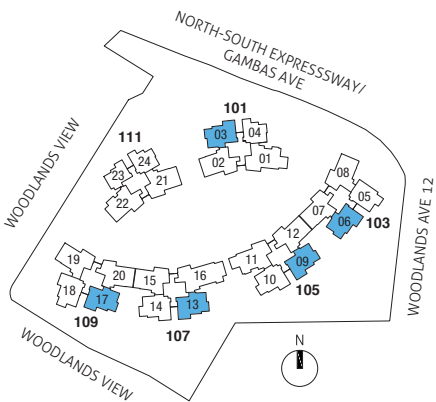
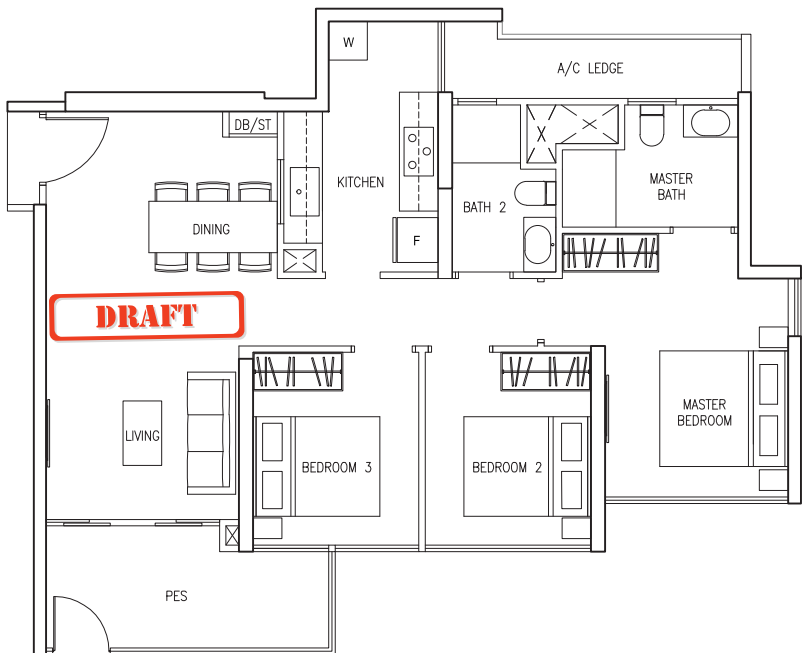
92 sq m/ 990 sq ft
#02-03 to #16-03



TYPE C2-P / C2(M)-P

92 sq m/ 990 sq ft
#01-09
#01-13
#01-17

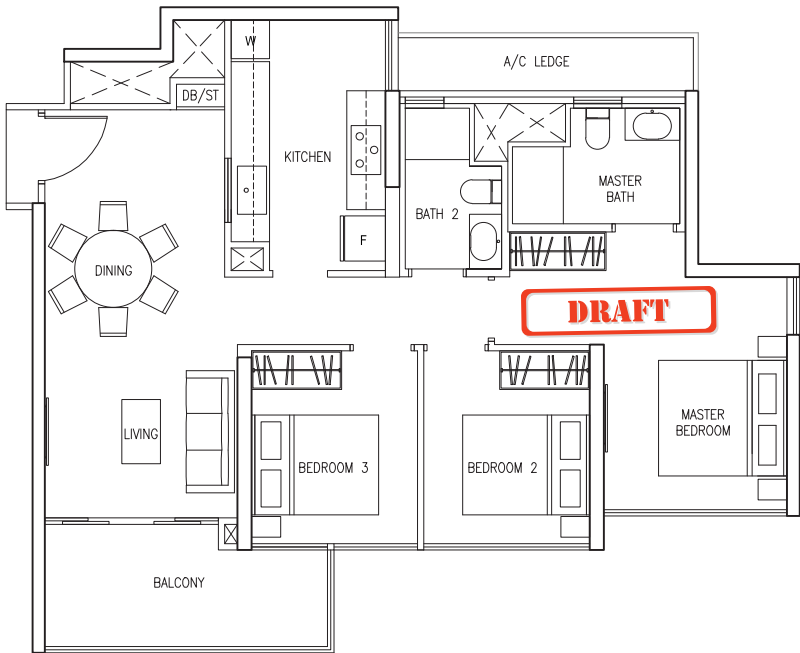
C2(M) P - Mirror Unit
#01-06



Area includes A/C ledge, balcony and PES where applicable. Orientations and facings will differ depending on the unit you are purchasing. Please refer to the key plan. The plans are subjected to change as may be required or approved by relevant authorities. All areas are approximate and subject to final survey. The developer and its agents cannot be held liable for any inaccuracies.

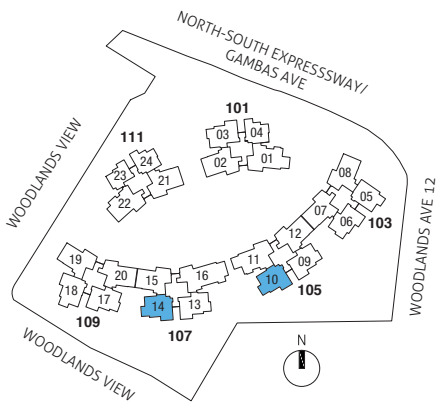
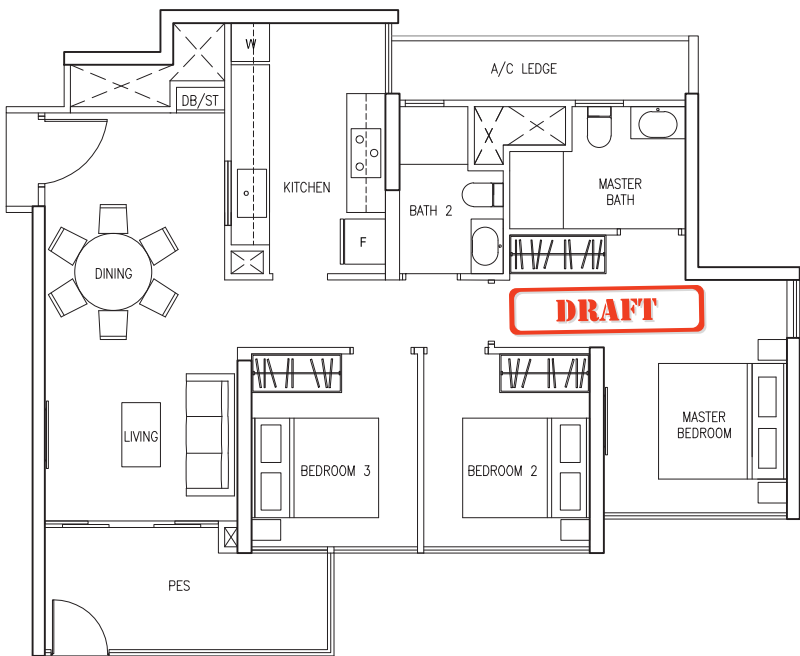
TYPE C3

91 sq m/ 979 sq ft
#02-10 to #13-10
#02-14 to #13-14



TYPE C3-P

91 sq m/ 979 sq ft
#01-10
#01-14

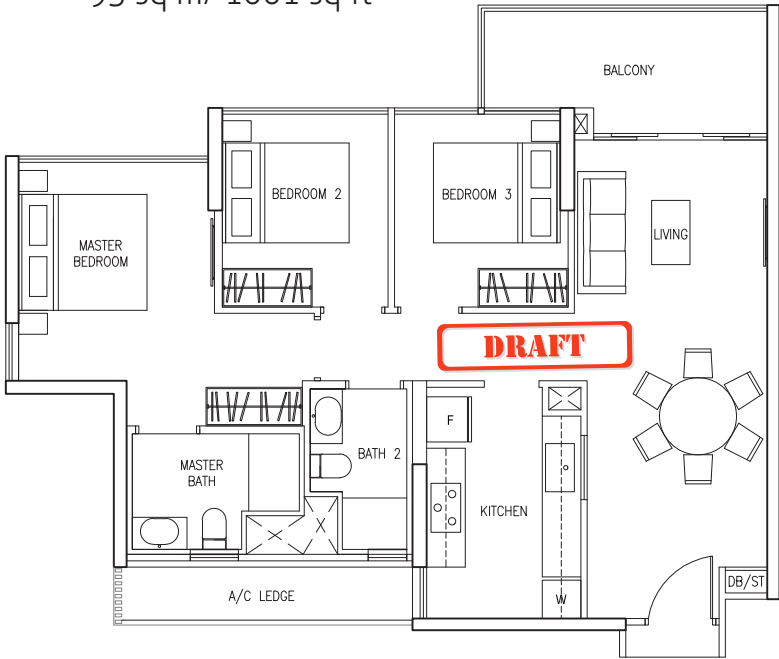


Area includes A/C ledge, balcony and PES where applicable. Orientations and facings will differ depending on the unit you are purchasing. Please refer to the key plan. The plans are subjected to change as may be required or approved by relevant authorities. All areas are approximate and subject to final survey. The developer and its agents cannot be held liable for any inaccuracies.

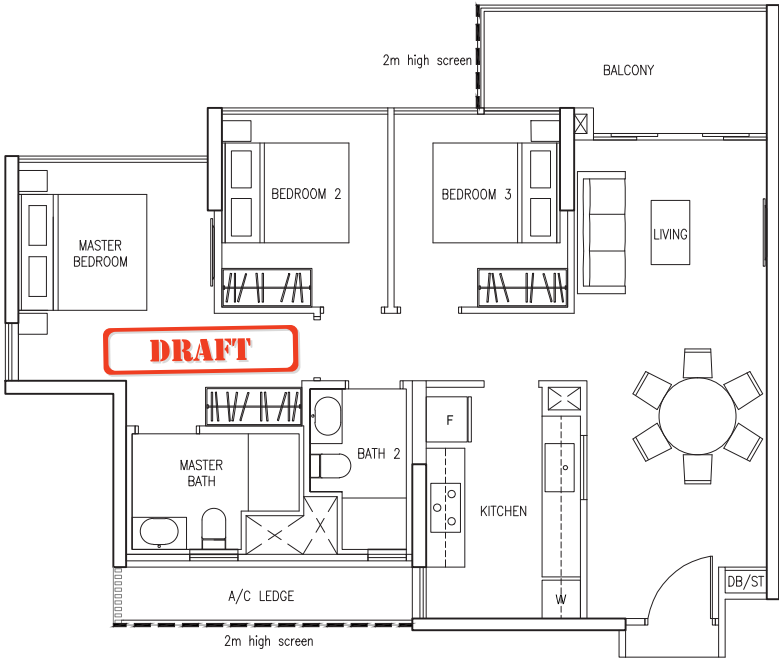
3 BEDROOM

TYPE C4

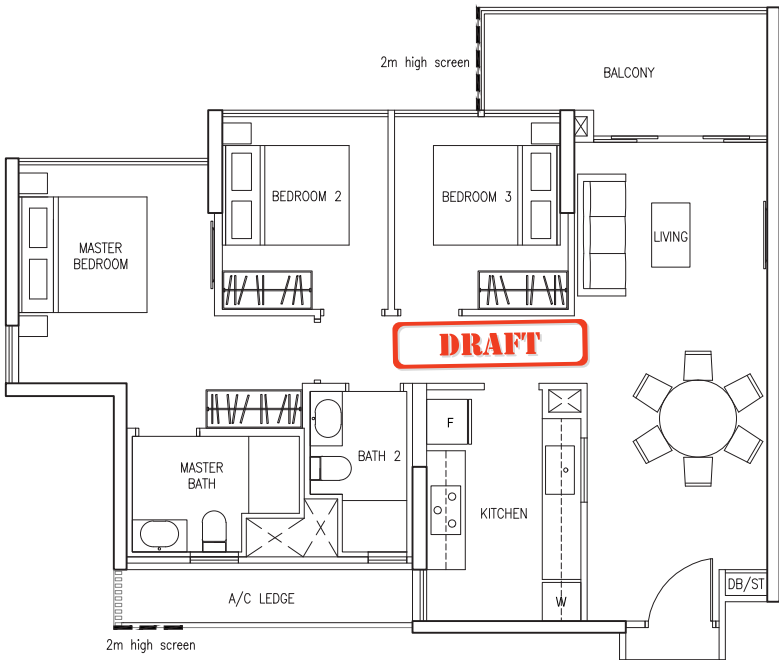
93 sq m/ 1001 sq ft



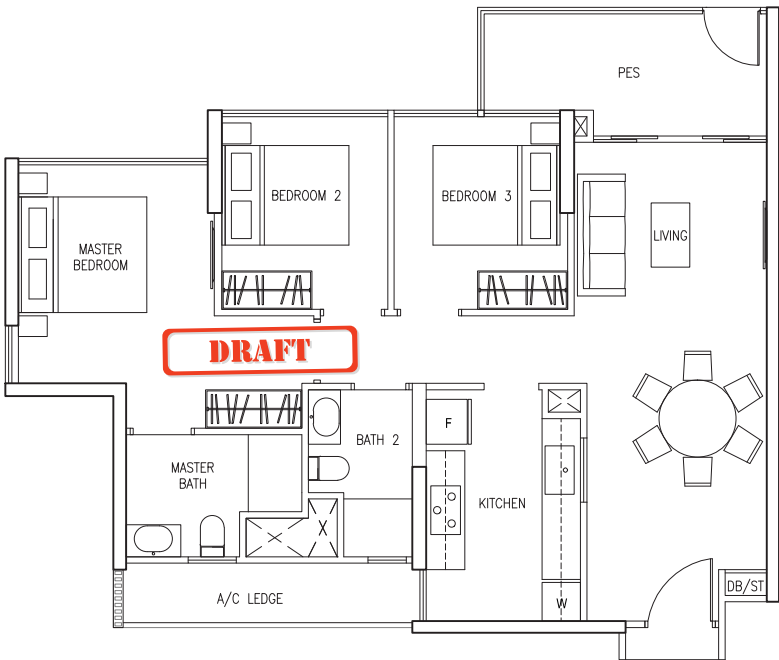
#02-18 to #13-18



#16-18*

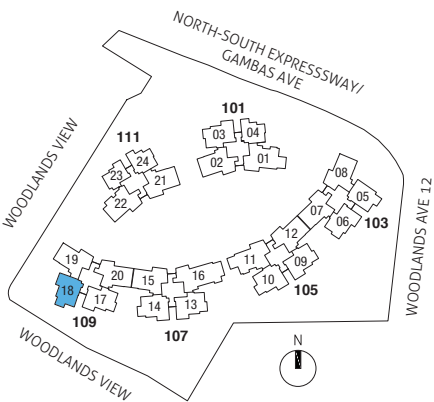


#14-18 to #15-18*



TYPE C4-P

93 sq m/ 1001 sq ft
#01-18



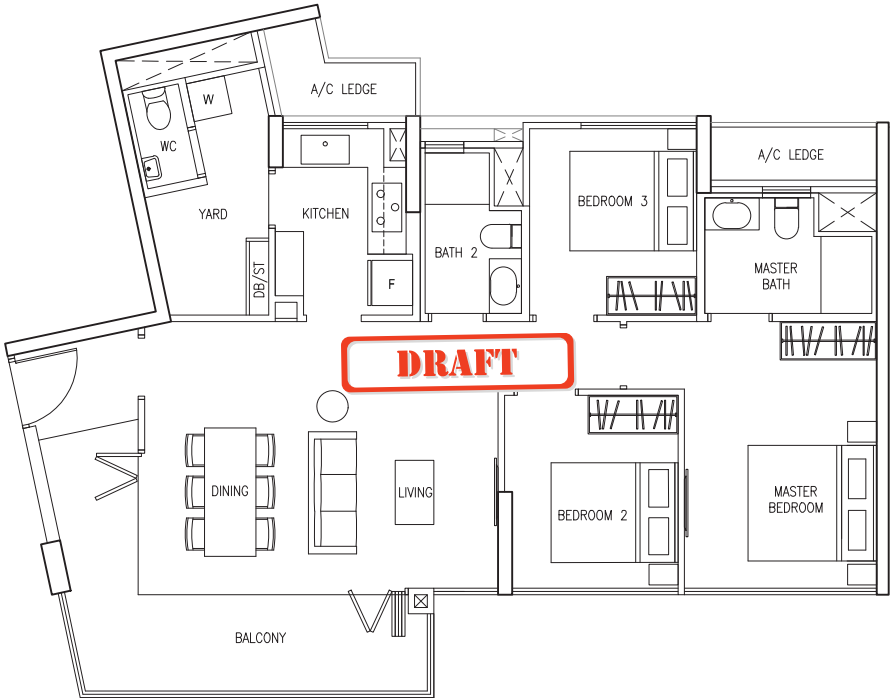
* DSTA screening/ frosted glass may be provided for these units



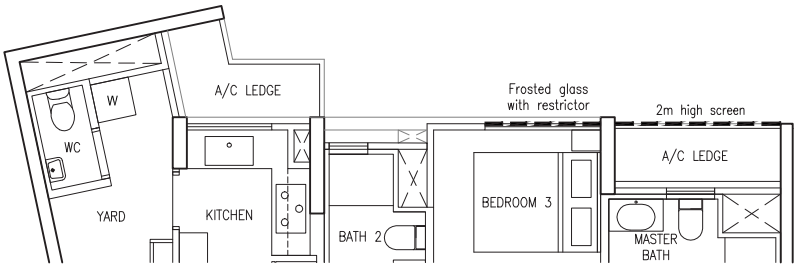
Area includes A/C ledge, balcony and PES where applicable. Orientations and facings will differ depending on the unit you are purchasing. Please refer to the key plan. The plans are subjected to change as may be required or approved by relevant authorities. All areas are approximate and subject to final survey. The developer and its agents cannot be held liable for any inaccuracies.

TYPE C5

102 sq m/ 1097 sq ft
#02-15 to #13-15
#03-21 to #16-21

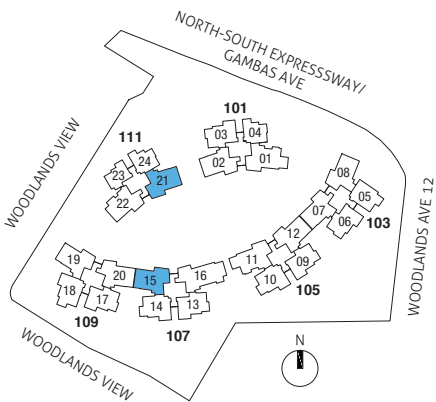
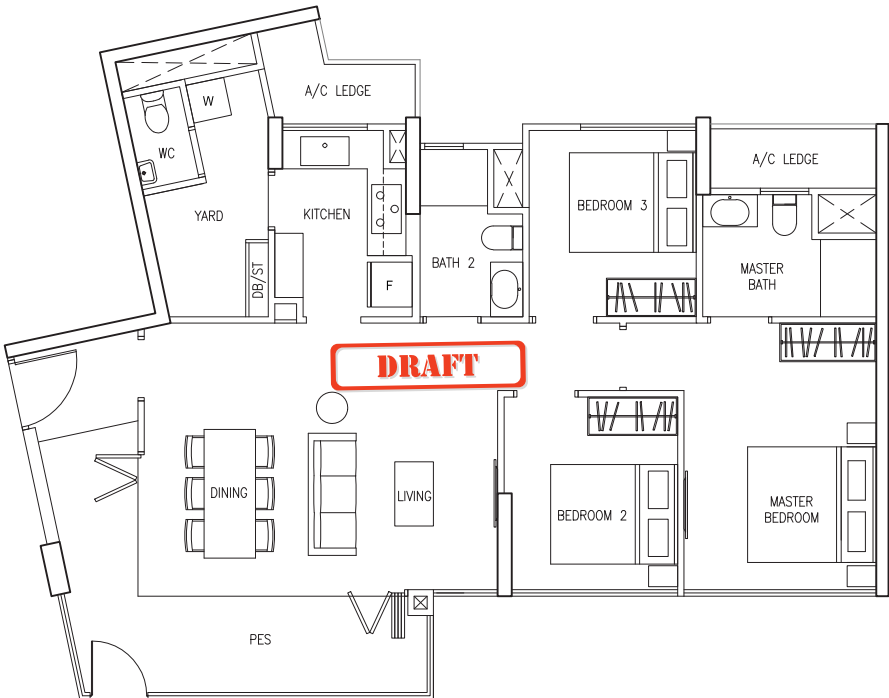


#14-15 to #15-15*



TYPE C5-P

102 sq m/ 1097 sq ft
#01-15
#01-21



* DSTA screening / frosted glass may be provided for these units



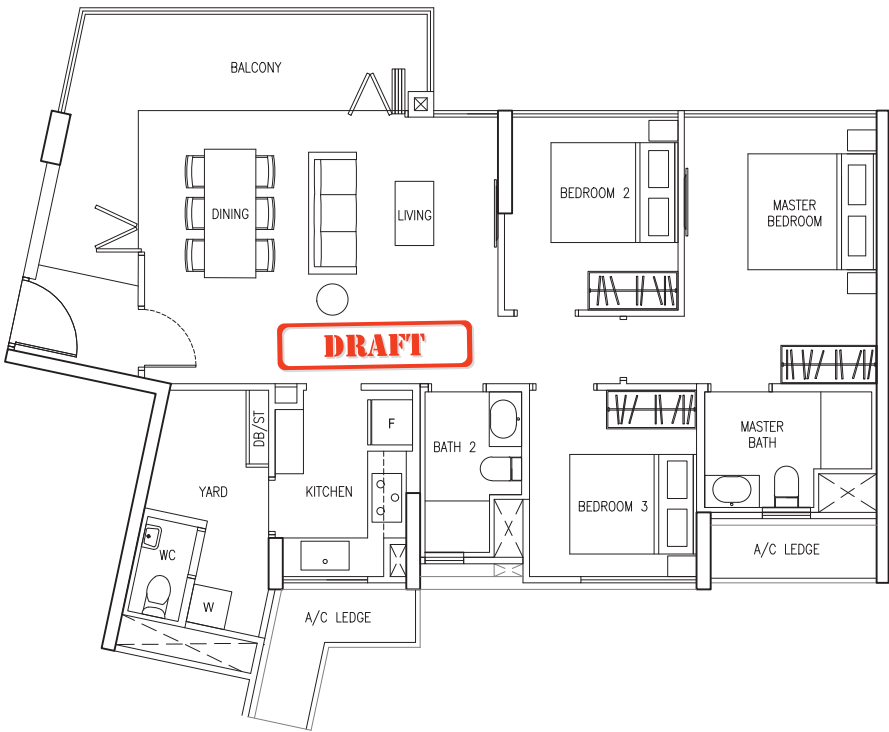
Area includes A/C ledge, balcony and PES where applicable. Orientations and facings will differ depending on the unit you are purchasing. Please refer to the key plan. The plans are subjected to change as may be required or approved by relevant authorities. All areas are approximate and subject to final survey. The developer and its agents cannot be held liable for any inaccuracies.

3 BEDROOM

TYPE C5a / C5a(M)

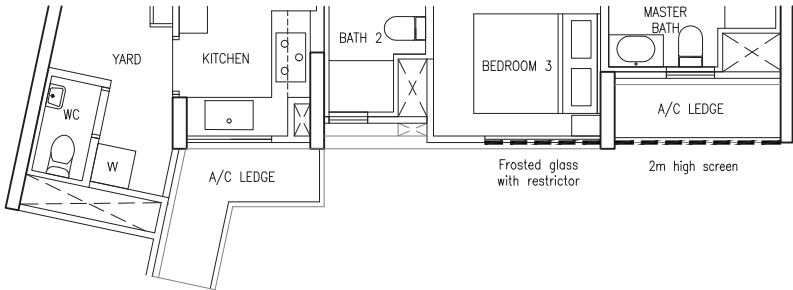
103 sq m/ 1108 sq ft
#02-08 to #11-08

C5a(M) - Mirror Units
#02-19 to #13-19



C5a
#12-08 to #16-08*

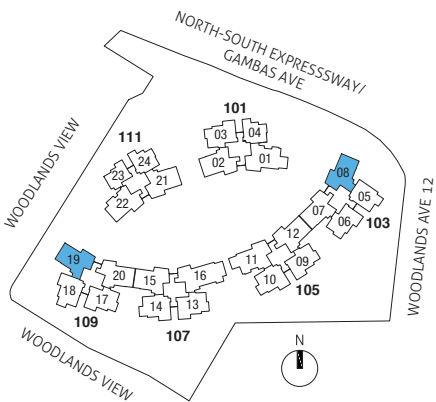
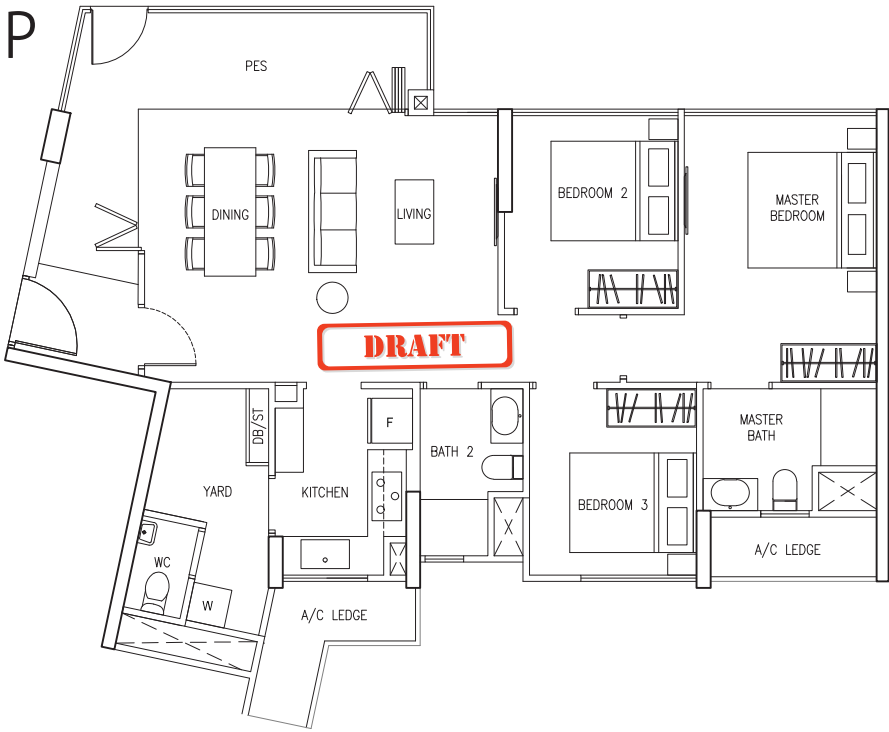
C5a(M) - Mirror Units
#14-19 to #16-19*



TYPE C5a-P / C5a(M)-P

103 sq m/ 1108 sq ft
#01-08

C5a(M)-P - Mirror Unit
#01-19



* DSTA screening/ frosted glass may be provided for these units

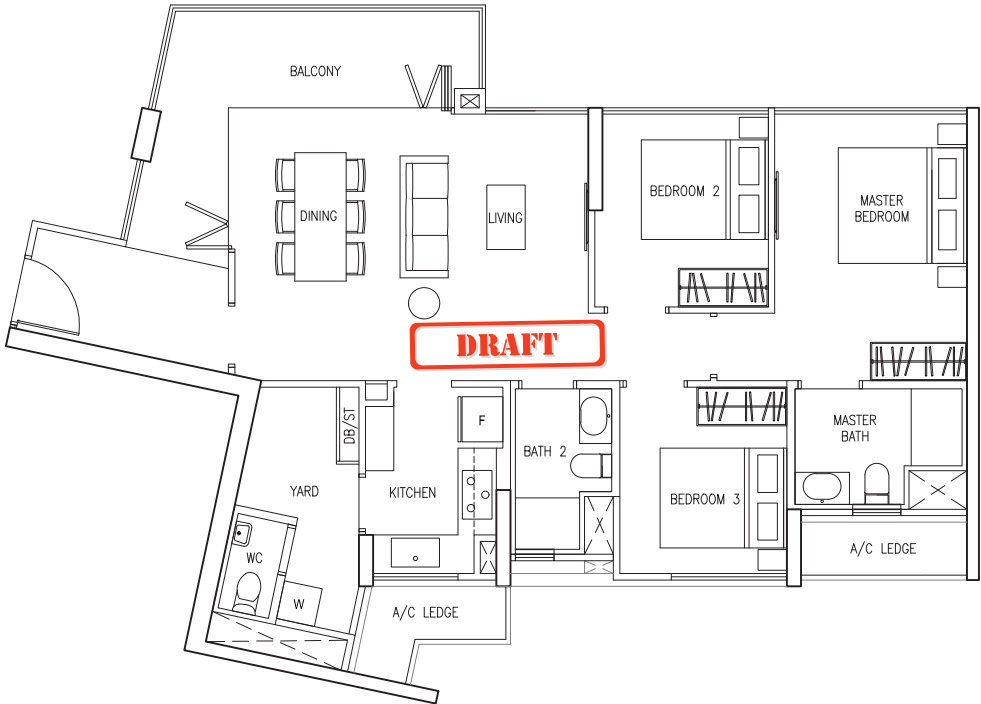


Area includes A/C ledge, balcony and PES where applicable. Orientations and facings will differ depending on the unit you are purchasing. Please refer to the key plan. The plans are subjected to change as may be required or approved by relevant authorities. All areas are approximate and subject to final survey. The developer and its agents cannot be held liable for any inaccuracies.

TYPE C6 / C6(M)

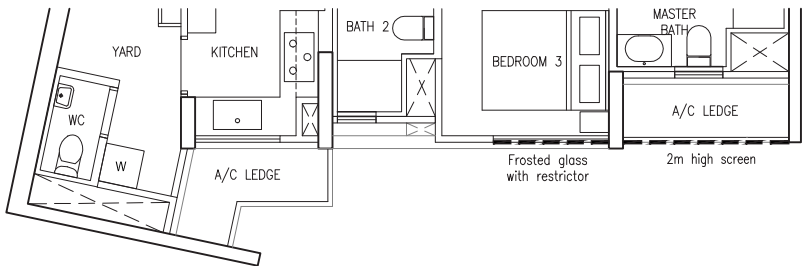
104 sq m/ 1119 sq ft
#03-02 to #16-02
#02-12 to #11-12
#02-20 to #13-20

C6(M) - Mirror Units
#02-07 to #11-07



C6
#12-12 to #15-12*
#14-20 to #15-20*

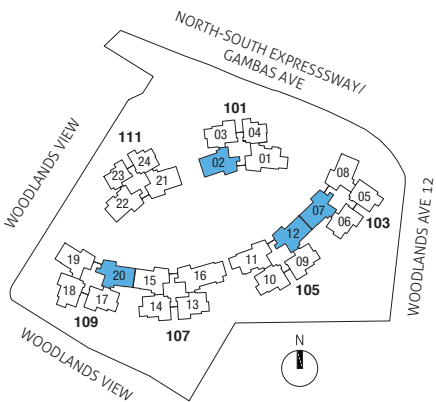
C6(M) - Mirror Units
#12-07 to #15-07*



TYPE C6-P / C6(M)-P

104 sq m/ 1119 sq ft
#01-02
#01-12
#01-20

C6(M)-P - Mirror Unit
#01-07



* DSTA screening / frosted glass may be provided for these units

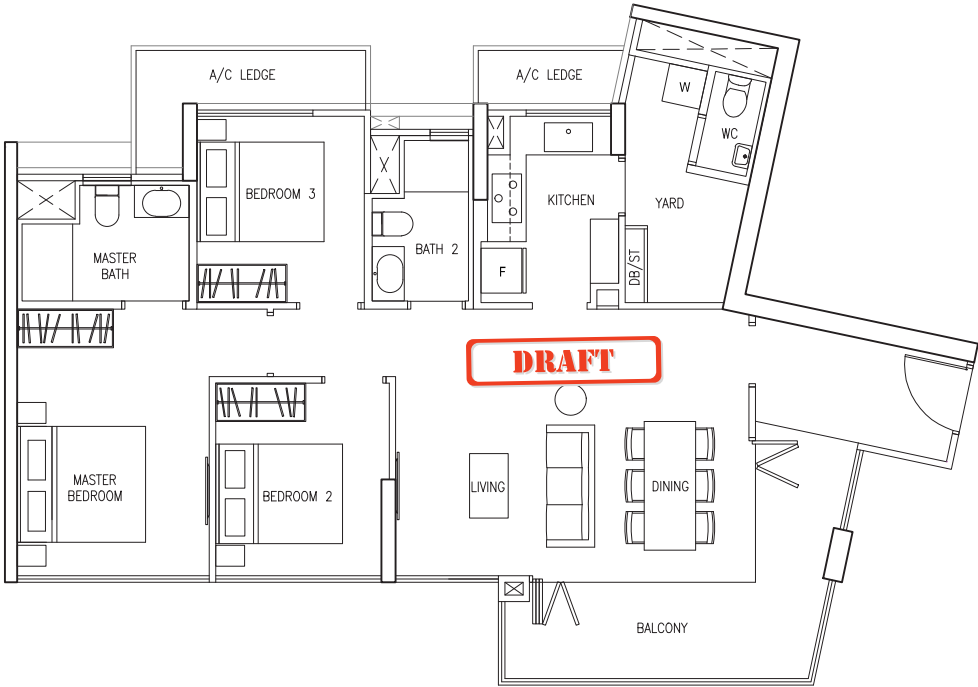


Area includes A/C ledge, balcony and PES where applicable. Orientations and facings will differ depending on the unit you are purchasing. Please refer to the key plan. The plans are subjected to change as may be required or approved by relevant authorities. All areas are approximate and subject to final survey. The developer and its agents cannot be held liable for any inaccuracies.

3 BEDROOM

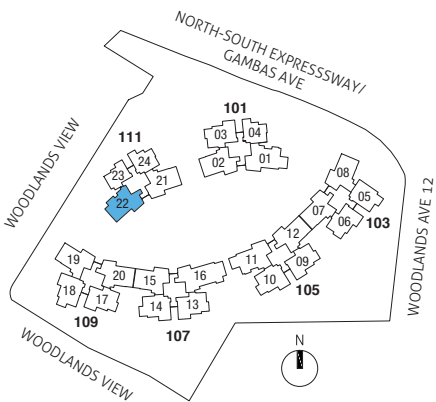
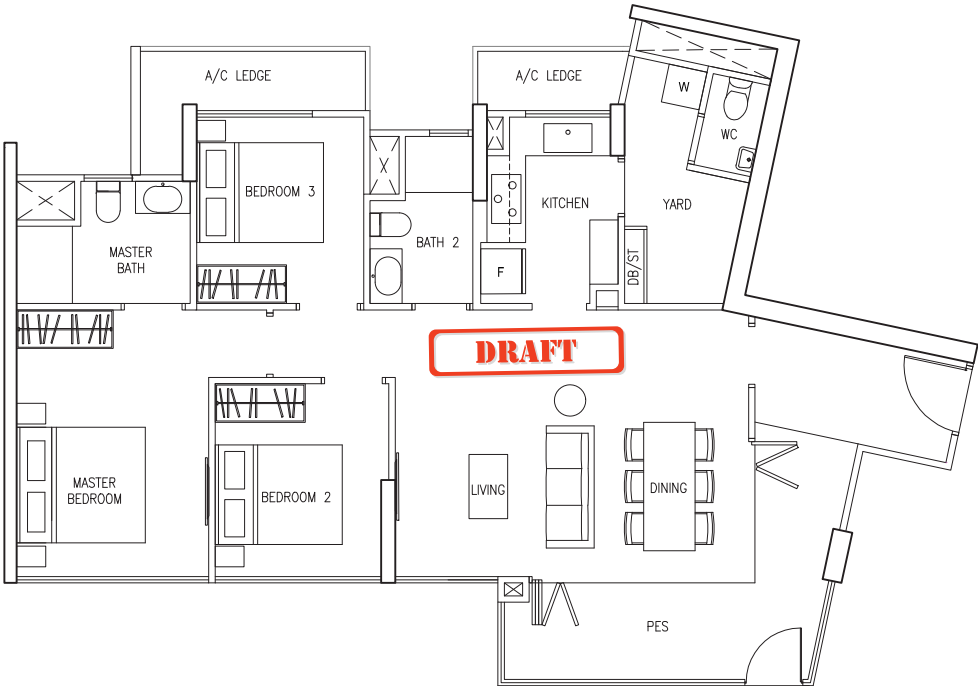
TYPE C6a

105 sq m/ 1130 sq ft
#02-22 to #16-22



TYPE C6a-P

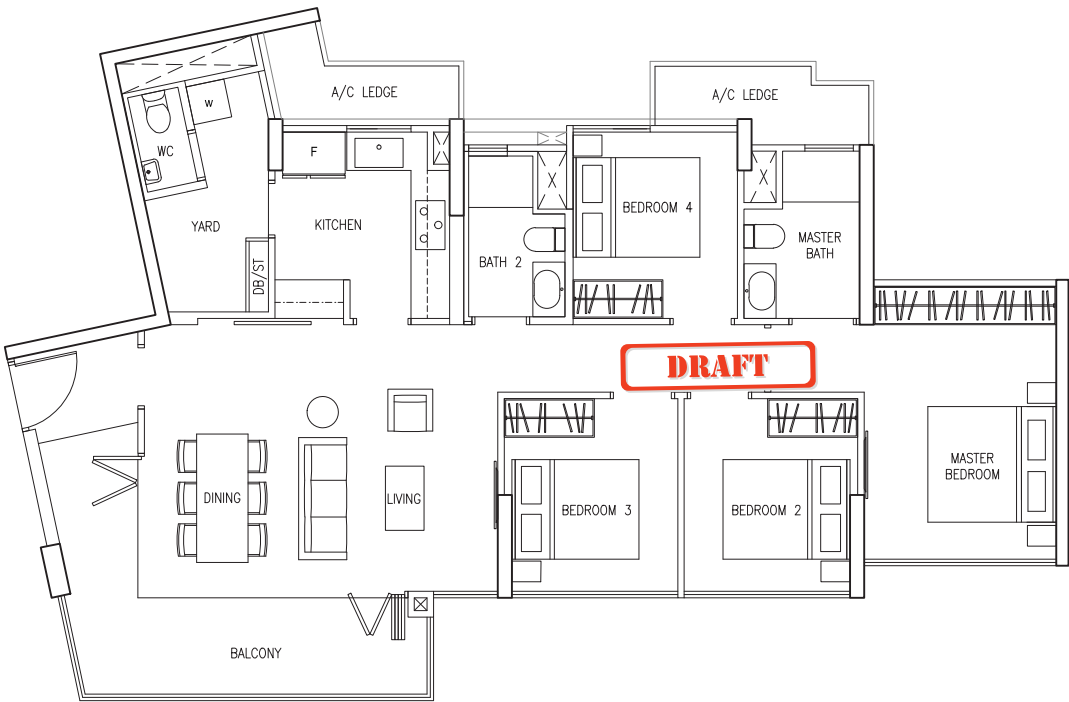
105 sq m/ 1130 sq ft
#01-22



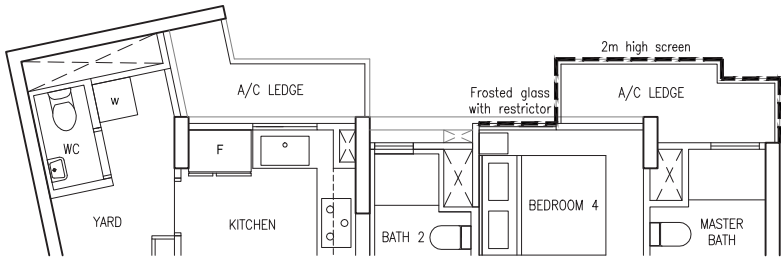
Area includes A/C ledge, balcony and PES where applicable. Orientations and facings will differ depending on the unit you are purchasing. Please refer to the key plan. The plans are subjected to change as may be required or approved by relevant authorities. All areas are approximate and subject to final survey. The developer and its agents cannot be held liable for any inaccuracies.

TYPE D1

118 sq m/ 1270 sq ft
#02-01 to #16-01
#02-11 to #13-11

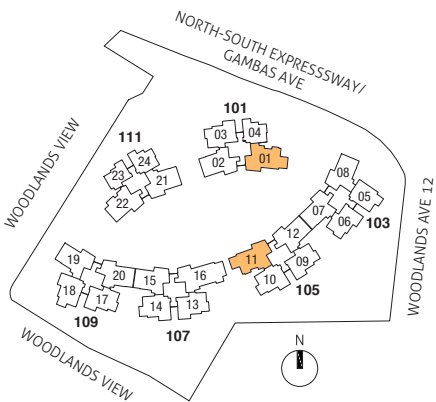
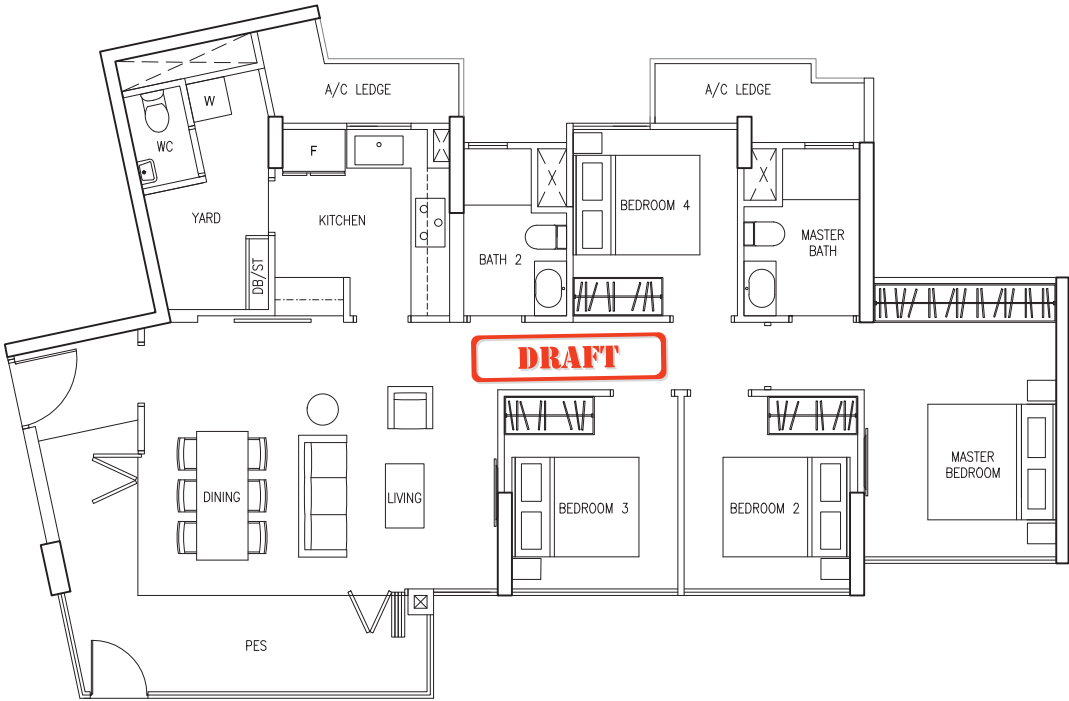


#14-11 to #15-11*



TYPE D1-P

118 sq m/ 1270 sq ft
#01-01
#01-11



* DSTA screening / frosted glass may be provided for these units

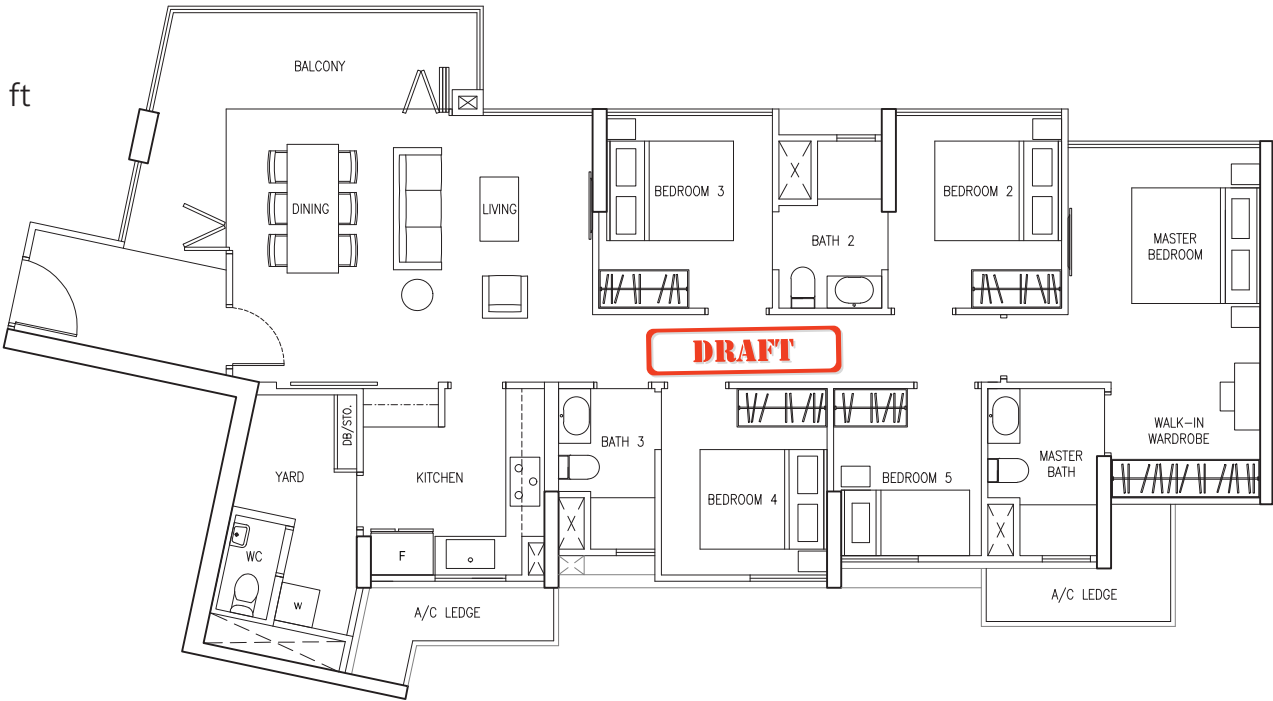


Area includes A/C ledge, balcony and PES where applicable. Orientations and facings will differ depending on the unit you are purchasing. Please refer to the key plan. The plans are subjected to change as may be required or approved by relevant authorities. All areas are approximate and subject to final survey. The developer and its agents cannot be held liable for any inaccuracies.

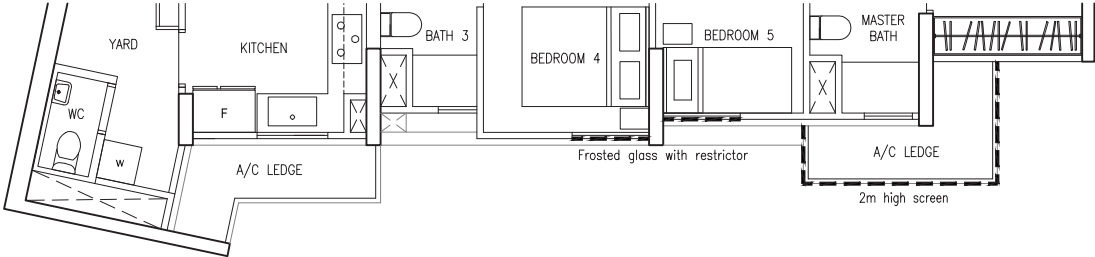
5 BEDROOM

TYPE E1

136 sq m/ 1463 sq ft
#02-16 to #13-16

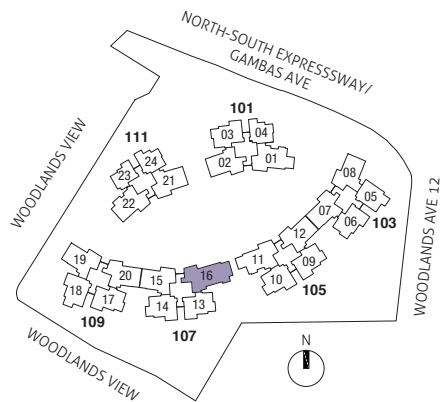
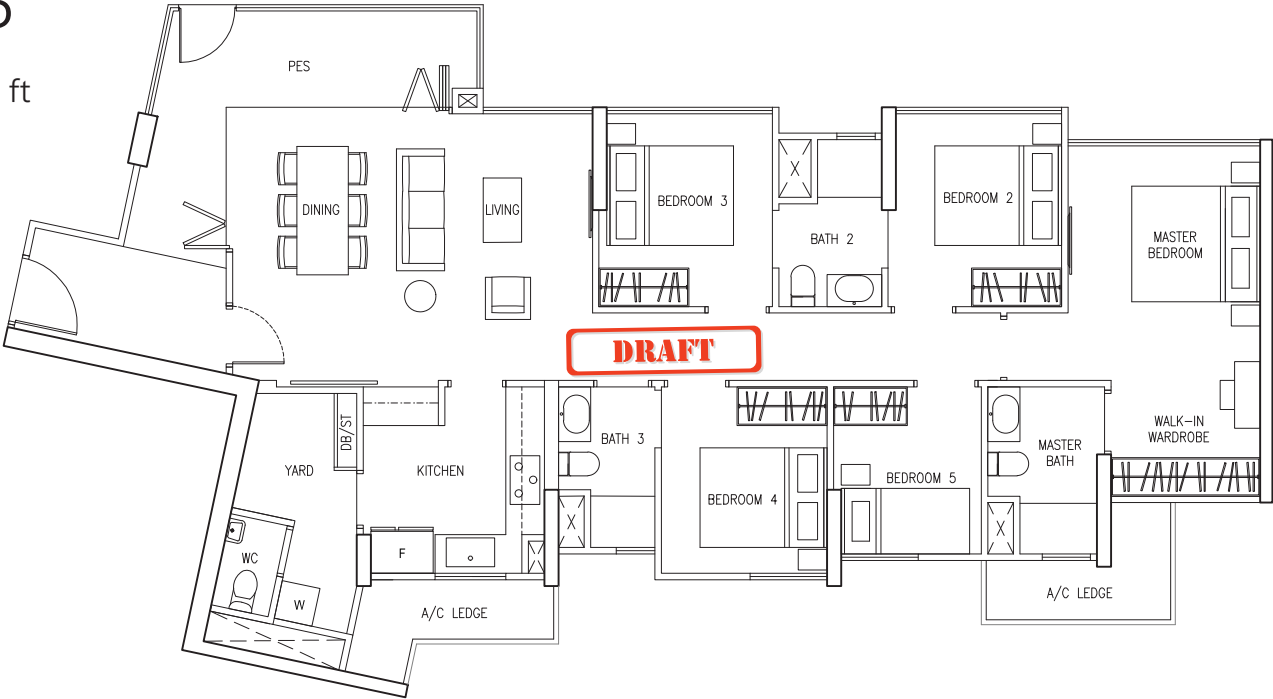


#14-16 to #15-16*



TYPE E1-P

136 sq m/ 1463 sq ft
#01-16



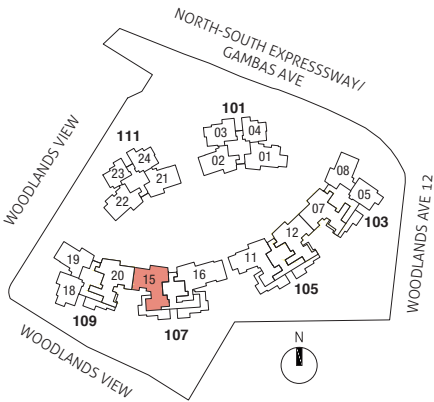
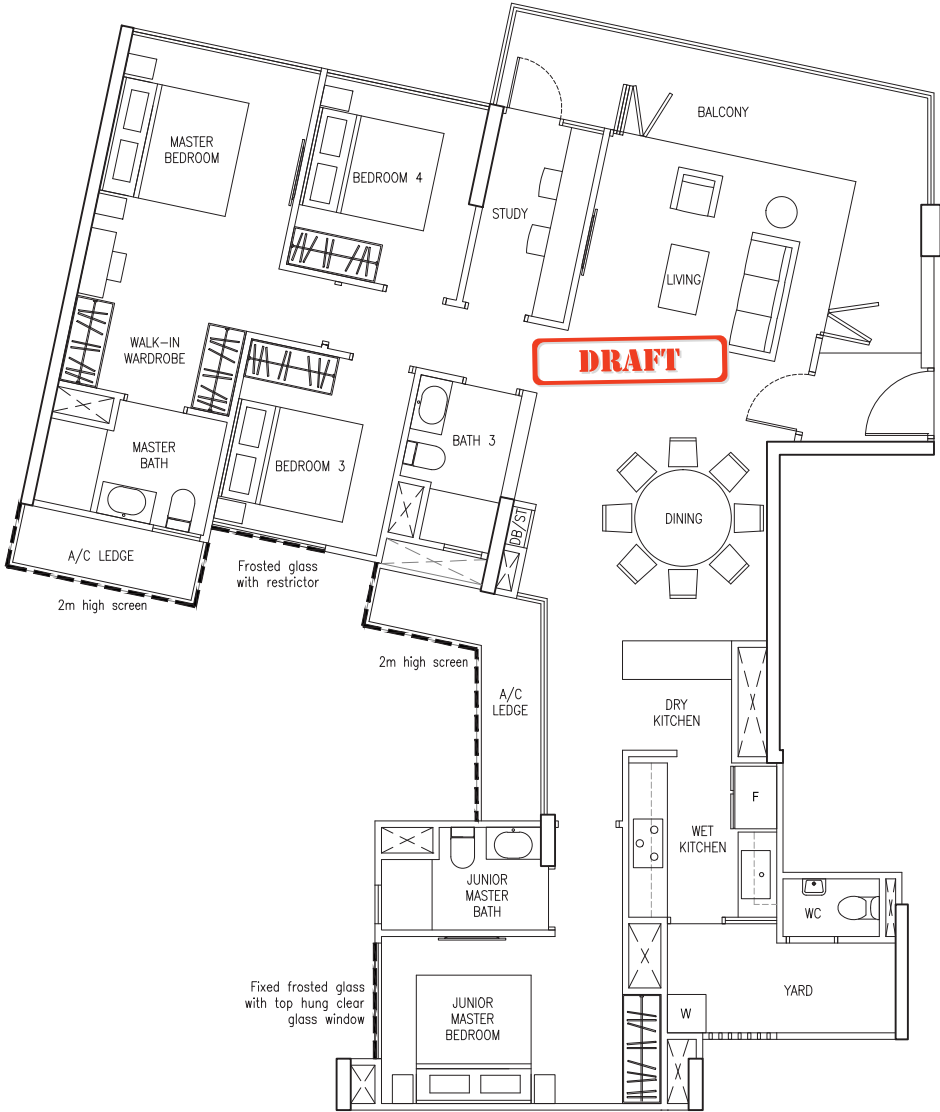
* DSTA screening / frosted glass may be provided for these units



Area includes A/C ledge, balcony and PES where applicable. Orientations and facings will differ depending on the unit you are purchasing. Please refer to the key plan. The plans are subjected to change as may be required or approved by relevant authorities. All areas are approximate and subject to final survey. The developer and its agents cannot be held liable for any inaccuracies.

TYPE PH1

148 sq m/ 1593 sq ft
#16-15*



* DSTA screening / frosted glass may be provided for these units

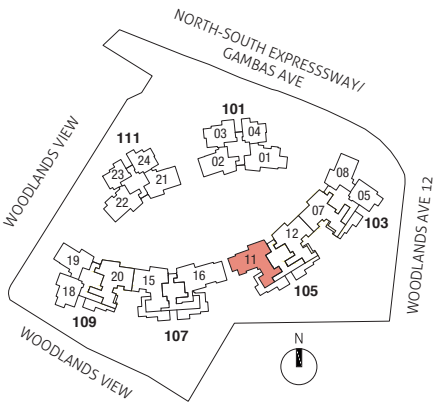
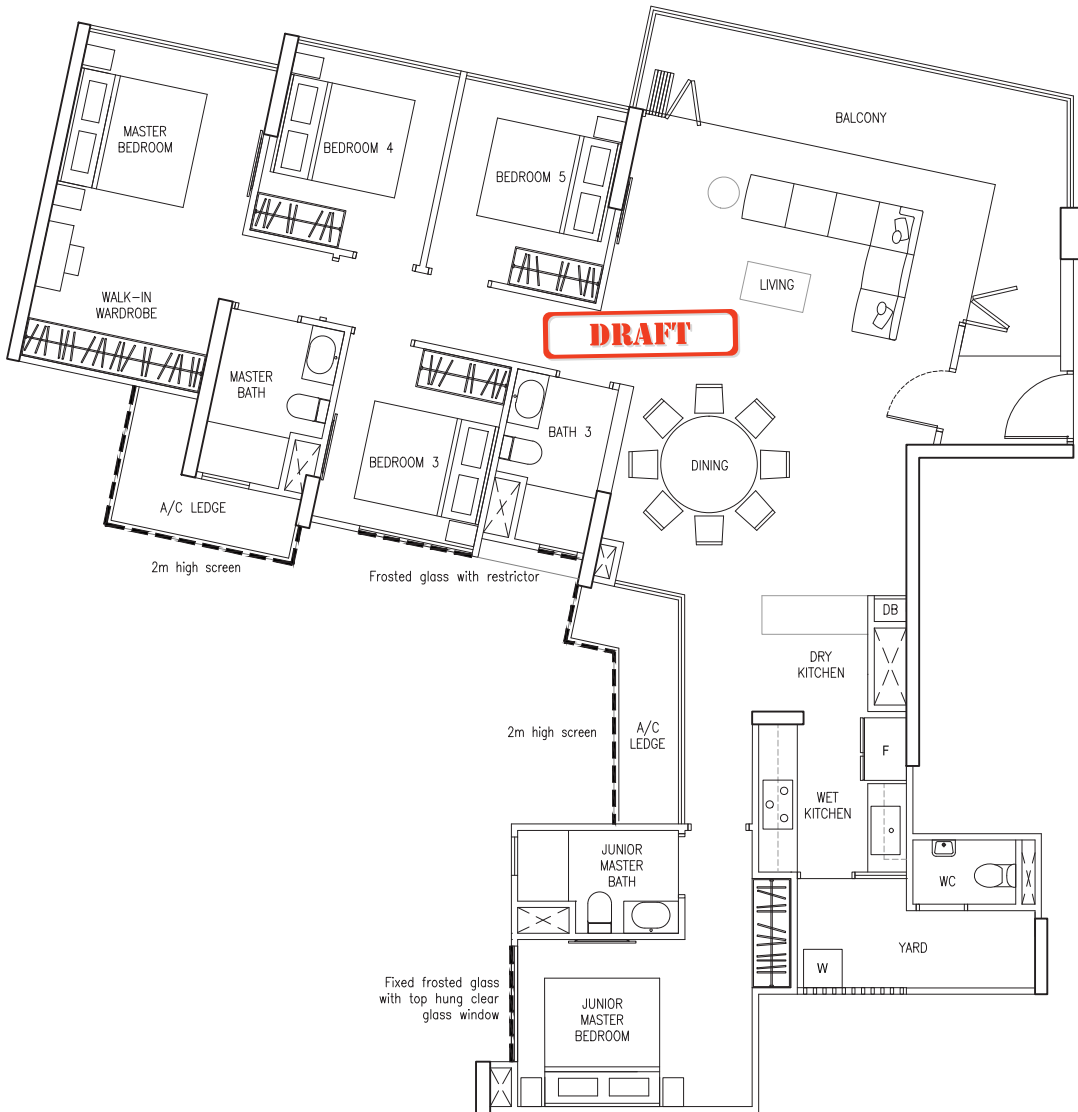


Area includes A/C ledge, balcony and PES where applicable. Orientations and facings will differ depending on the unit you are purchasing. Please refer to the key plan. The plans are subjected to change as may be required or approved by relevant authorities. All areas are approximate and subject to final survey. The developer and its agents cannot be held liable for any inaccuracies.

Area includes A/C ledge, balcony and PES where applicable. Orientations and facings will differ depending on the unit you are purchasing. Please refer to the key plan. The plans are subjected to change as may be required or approved by relevant authorities. All areas are approximate and subject to final survey. The developer and its agents cannot be held liable for any inaccuracies.

TYPE PH3

160 sq m/ 1722 sq ft
#16-11*

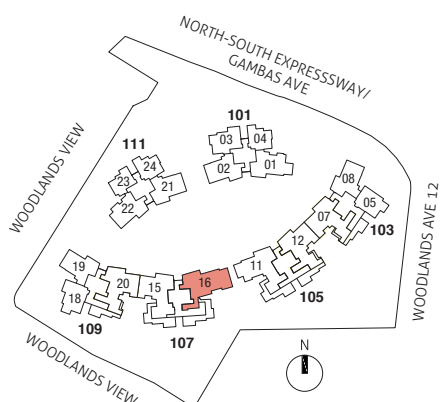


* DSTA screening / frosted glass may be provided for these units



Area includes A/C ledge, balcony and PES where applicable. Orientations and facings will differ depending on the unit you are purchasing. Please refer to the key plan. The plans are subjected to change as may be required or approved by relevant authorities. All areas are approximate and subject to final survey. The developer and its agents cannot be held liable for any inaccuracies.

160 sq m/ 1722 sq ft
#16-16*



Area includes A/C ledge, balcony and PES where applicable. Orientations and facings will differ depending on the unit you are purchasing. Please refer to the key plan. The plans are subjected to change as may be required or approved by relevant authorities. All areas are approximate and subject to final survey. The developer and its agents cannot be held liable for any inaccuracies.