

THE COLONY

BY INFINITUM

QUILL
CITY MALL

SHERATON
IMPERIAL

ASIAN
HERITAGE ROW

ZOUK CLUB

KUALA LUMPUR
CITY CENTRE

KUALA LUMPUR
CITY PARK

BUKIT BINTANG

**EMBRACING THE FUTURE,
IT'S ALL HAPPENING HERE**

YOUR LIFE: REINTERPRETED AT THE COLONY BY INFINITUM

With professional lifestyles in mind, The Colony by Infinitum is a freehold development, offering the ideal living experience. With 723 residential units and 31 commercial units spread across three levels of retail shops, discover everything you wish for at The Colony by Infinitum.



ARTIST'S IMPRESSION ONLY

ENTRANCE

INFINITUM

WELCOME TO A WHOLE NEW
LIVING EXPERIENCE

BLOCK A
LOBBY

BLOCK B
LOBBY



ENTRANCE TO
A NEW WAY OF LIFE

GYM



ARTIST'S IMPRESSION ONLY

CLUB



ARTIST'S IMPRESSION ONLY

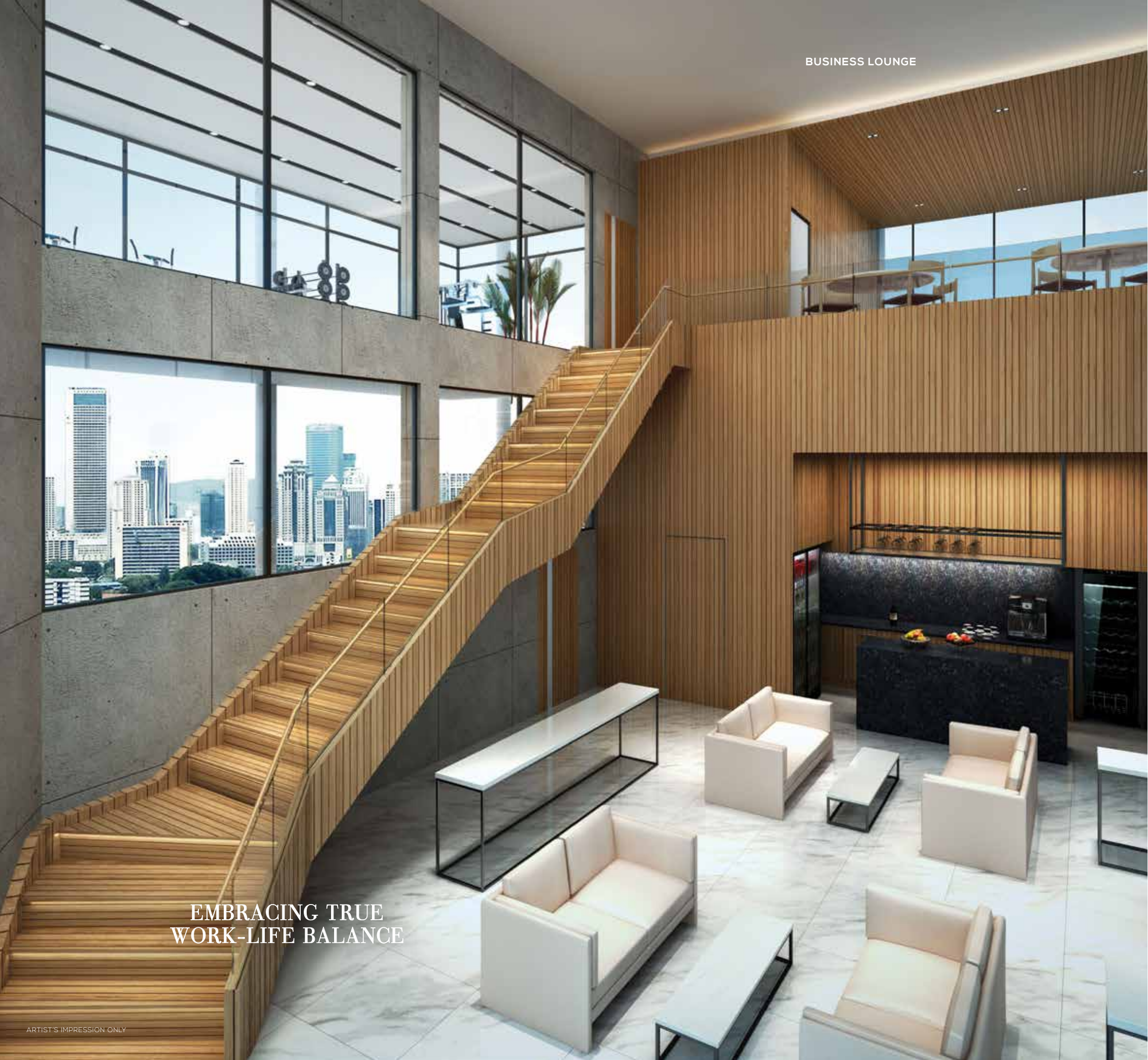
BBC/OUTDOOR DINING

ENTERTAINING WITH A VIEW

SWIMMING POOL

FOR A WELL-DESERVED
REST AND RELAXATION

EMBRACING TRUE
WORK-LIFE BALANCE



35TH FLOOR



LEGEND  PHASE 2

PHASE 1

- 1 CHILDREN'S PLAYGROUND (AT GROUND LEVEL)
- 2 BBQ/OUTDOOR DINING
- 3 POOL DECK
- 4 SWIMMING POOL
- 5 WET DECK
- 6 JACUZZI
- 7 BUSINESS LOUNGE
- 8 SHALLOW POOL

PHASE 2

- 11 RESIDENTS' LOUNGE
- 12 INTERNET ROOM
- 13 KTV ROOM
- 14 STAFF RECREATION ROOM
- 15 PLANTER
- 16 STEAM/SAUNA ROOM


36TH FLOOR



LEGEND  PHASE 2

PHASE 1

- 9 INDOOR DINING
- 10 GYM

A modern multi-story building facade with a glass-enclosed skybridge and a landscaped rooftop terrace. The building features large windows and balconies with glass railings. The skybridge is illuminated from within, and the rooftop terrace has a glass railing and is planted with trees and flowers. The overall design is clean and contemporary.

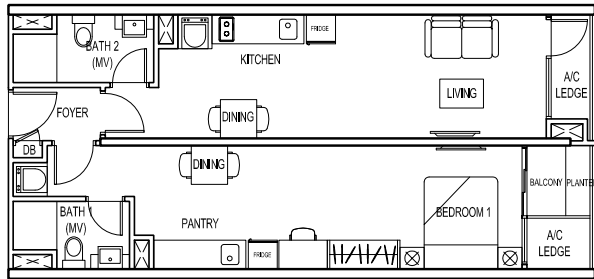
FACADE

RESIDENCE

**THE IDEAL SETTING FOR
FOCUS AND CONCENTRATION**

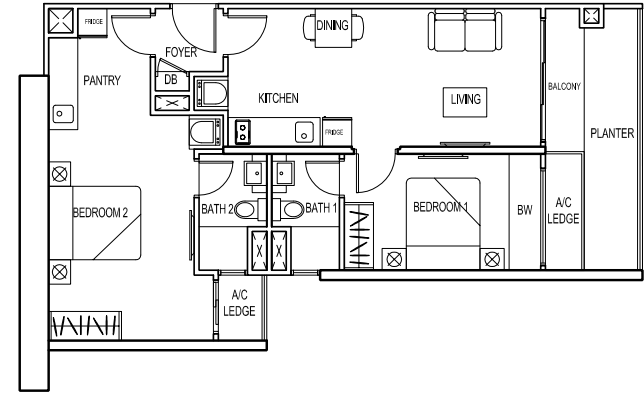
TYPE A

705 SQ FT



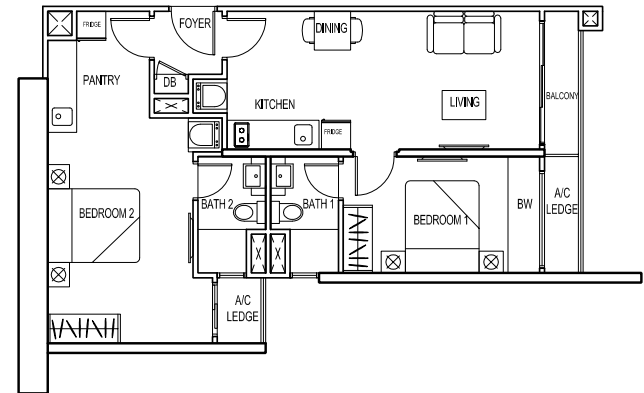
TYPE A1 & TYPE A1(G)

805 SQ FT



1
TYPE A1

735 SQ FT



2
TYPE A1(G)

BLOCK A

#19-08 TO #32-08*
#19-09 TO #32-09

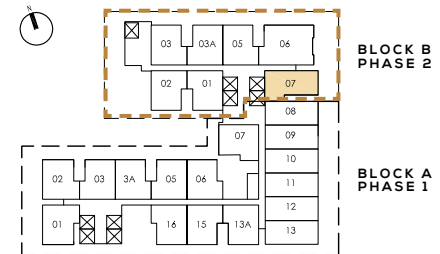
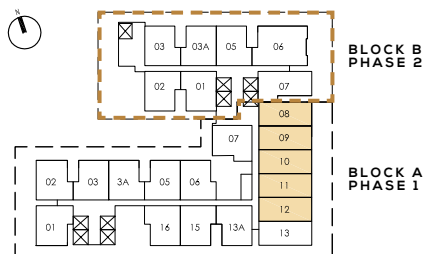
#19-10 TO #32-10*
#19-11 TO #32-11

#19-12 TO #32-12*

BLOCK B

1 #19-07 TO #32-07
#33A-07

2 #33-07



DUAL-KEY

PHASE 2

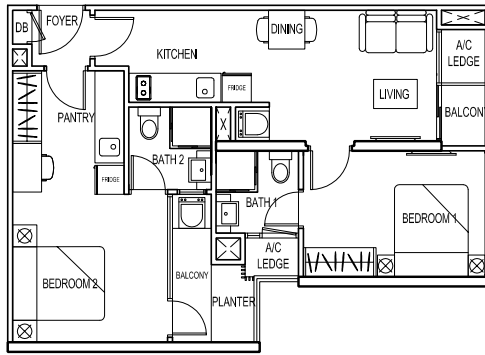
* MIRRORED UNITS

DUAL-KEY

PHASE 2

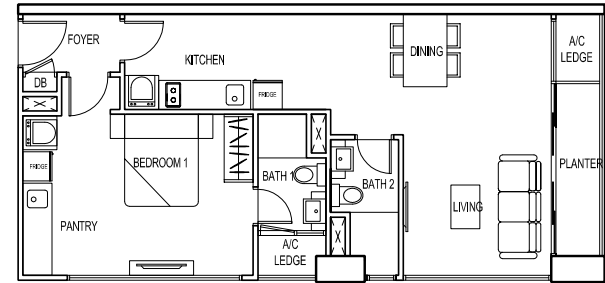
TYPE A2

675 SQ FT



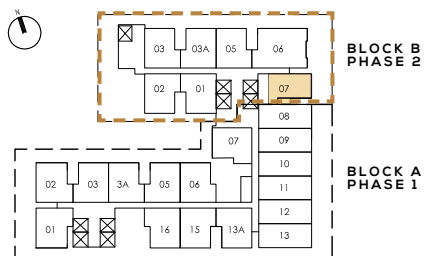
TYPE A3

720 SQ FT



BLOCK B

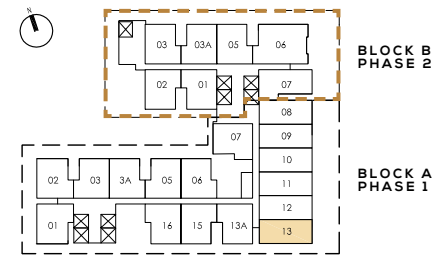
#36-07 TO #42-07



 DUAL-KEY  PHASE 2

BLOCK A

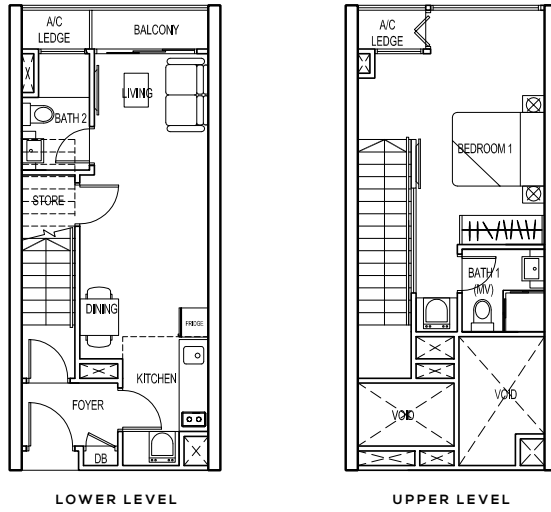
#19-13 TO #32-13



 DUAL-KEY  PHASE 2

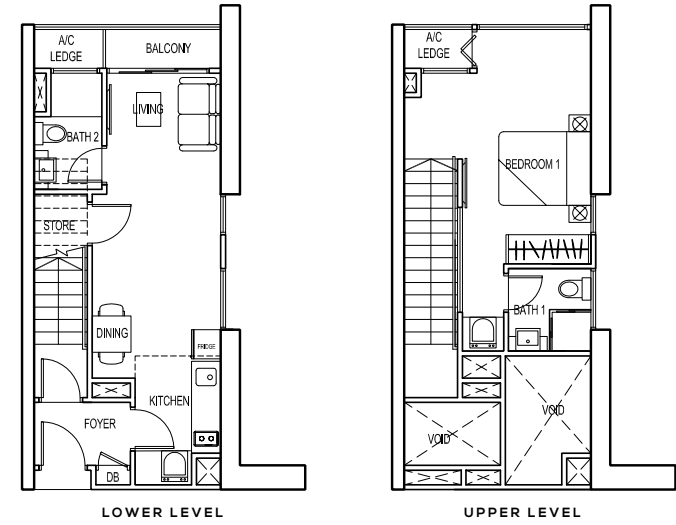
TYPE B

730 SQ FT



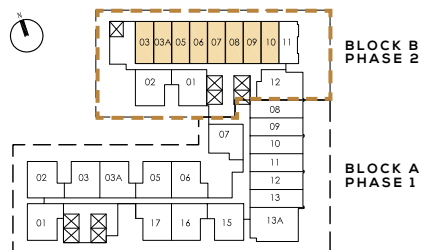
TYPE B (CORNER)

720 SQ FT



BLOCK B

#08-03 TO #18-03* #08-05 TO #18-05* #08-07 TO #18-07* #08-09 TO #18-09*
 #08-03A TO #18-03A #08-06 TO #18-06 #08-08 TO #18-08 #08-10 TO #18-10



DUAL-KEY

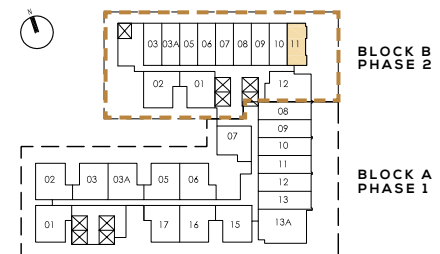


PHASE 2

* MIRRORED UNITS

BLOCK B

#08-11 TO #18-11



DUAL-KEY



PHASE 2

**TYPE C
STUDIO / LIVING**



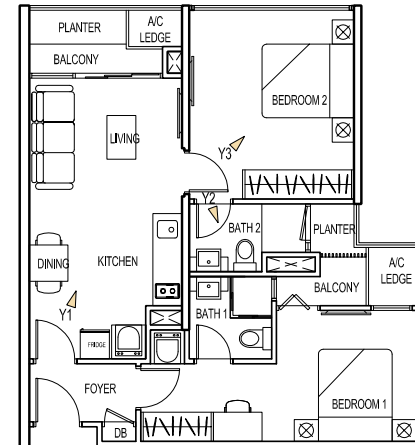
Y1
ARTIST'S IMPRESSION ONLY



Y1
ARTIST'S IMPRESSION ONLY

TYPE C

725 SQ FT

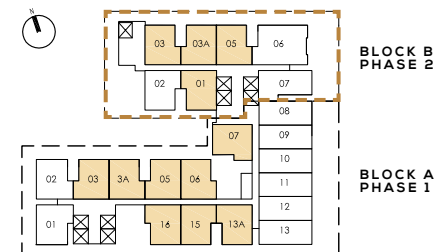



BLOCK A

#19-03 TO #32-03*
#19-03A TO #32-03A
#19-05 TO #32-05*
#19-06 TO #32-06
#19-07 TO #32-07*
#19-13A TO #32-13A
#19-15 TO #32-15*
#19-16 TO #32-16

BLOCK B

#19-01 TO #32-01
#19-03 TO #32-03
#19-03A TO #32-03A*
#19-05 TO #32-05
#33-01 TO #33A-01
#33-03 TO #33A-03
#33-03A TO #33A-03A*
#33-05 TO #33A-05
#36-01 TO #42-01
#36-03 TO #42-03
#36-03A TO #42-03A*
#36-05 TO #42-05



 DUAL-KEY

 PHASE 2

* MIRRORED UNITS

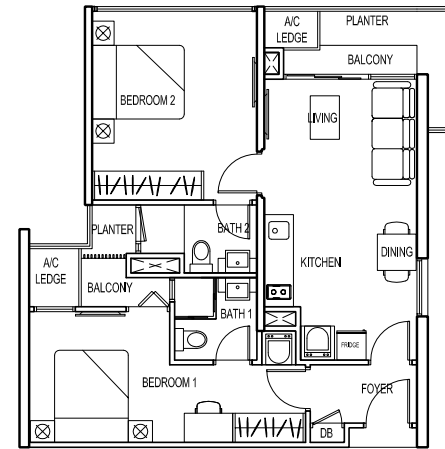
**TYPE C
BATHROOM**



Y2 ▶
ARTIST'S IMPRESSION ONLY

TYPE C (CORNER)

745 SQ FT

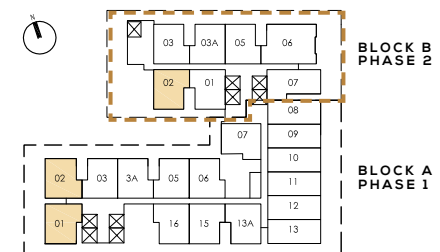


BLOCK A

#19-01 TO #32-01
#19-02 TO #32-02*

BLOCK B

#19-02 TO #32-02
#33-02 TO #33A-02
#36-02 TO #42-02



DUAL-KEY

PHASE 2

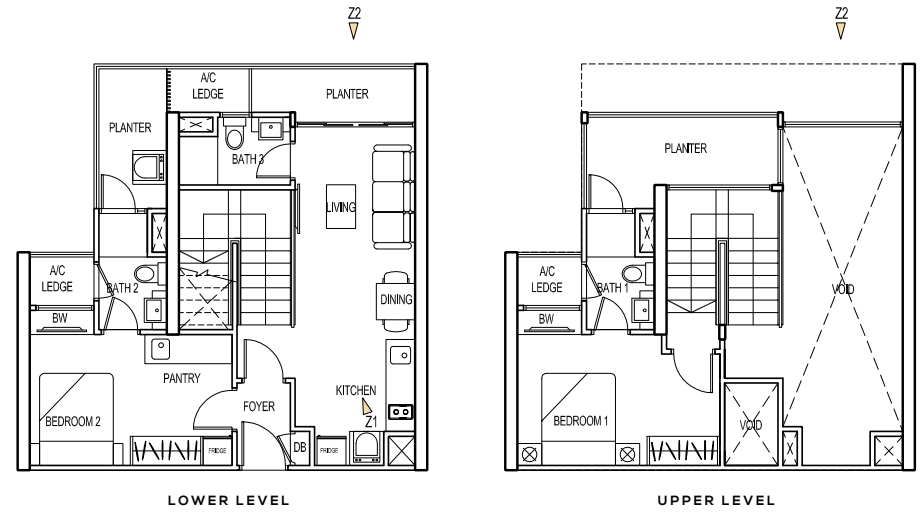
* MIRRORED UNITS

**TYPE D
STUDIO / LIVING**



TYPE D

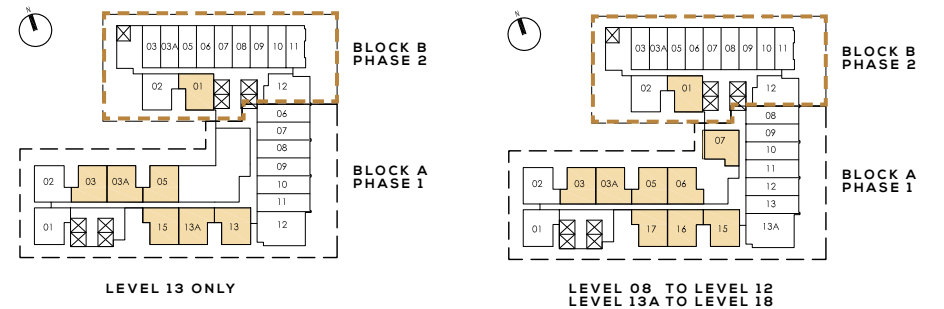
945 SQ FT



BLOCK A

BLOCK B

| | | |
|---------|---------------------|--------------------|
| #13-13* | #08-03 TO #18-03 | #08-01 TO #18-01* |
| #13-13A | #08-03A TO #18-03A* | |
| #13-15* | #08-05 TO #18-05 | |
| | #08-06 TO #12-06* | #13A-06 TO #18-06* |
| | #08-07 TO #12-07 | #13A-07 TO #18-07 |
| | #08-15 TO #12-15* | #13A-15 TO #18-15* |
| | #08-16 TO #12-16 | #13A-16 TO #18-16 |
| | #08-17 TO #12-17* | #13A-17 TO #18-17* |



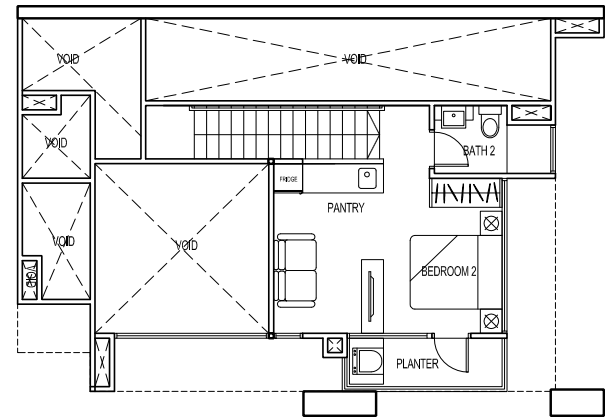
DUAL-KEY LOFT UNIT PHASE 2 * MIRRORED UNITS

TYPE D
LIVING

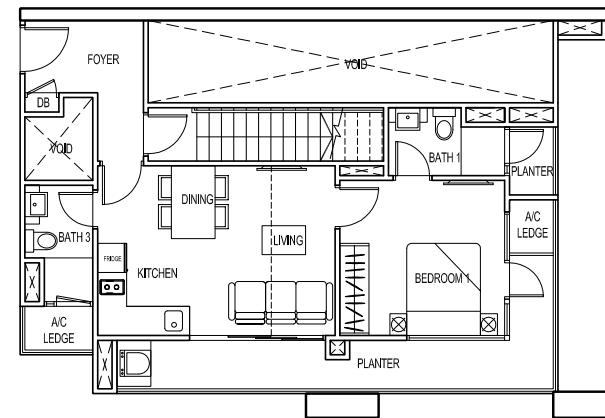


TYPE D1

990 SQ FT



UPPER LEVEL



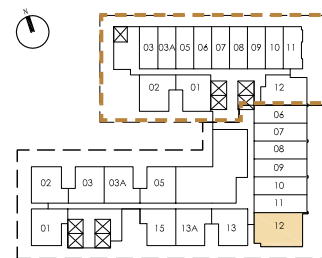
LOWER LEVEL

BLOCK A

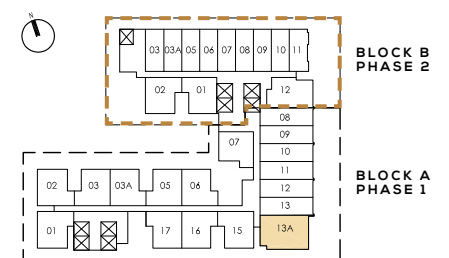
#13-12

#08-13A TO #12-13A

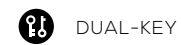
#13A-13A TO #18-13A



LEVEL 13 ONLY



LEVEL 08 TO LEVEL 12
LEVEL 13A TO LEVEL 18



DUAL-KEY



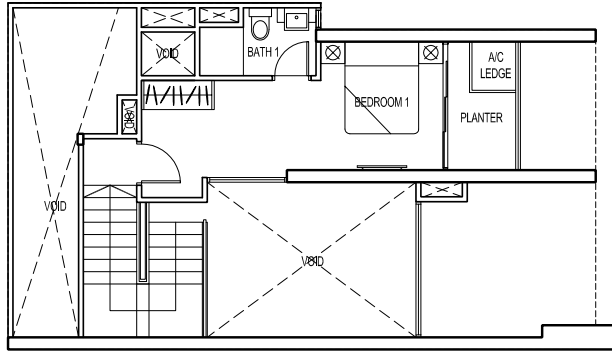
LOFT UNIT



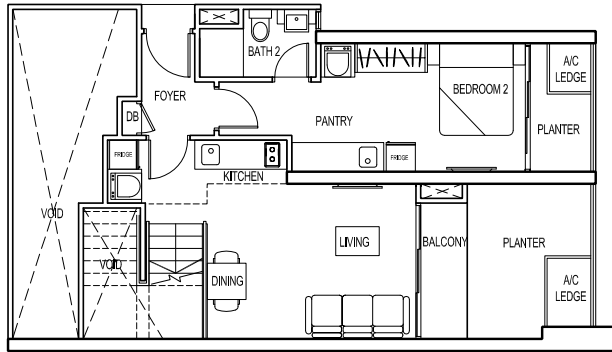
PHASE 2

TYPE D2

995 SQ FT



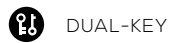
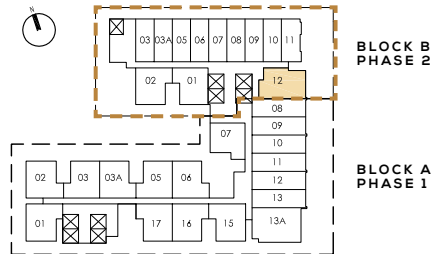
UPPER LEVEL



LOWER LEVEL

BLOCK B

#08-12 TO #18-12



DUAL-KEY



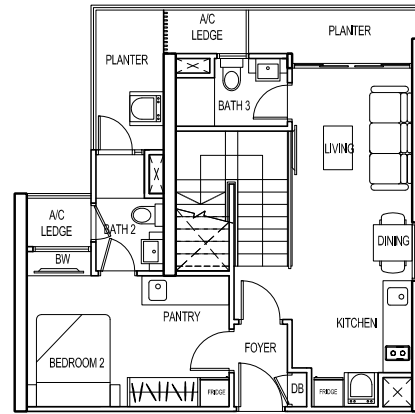
LOFT UNIT



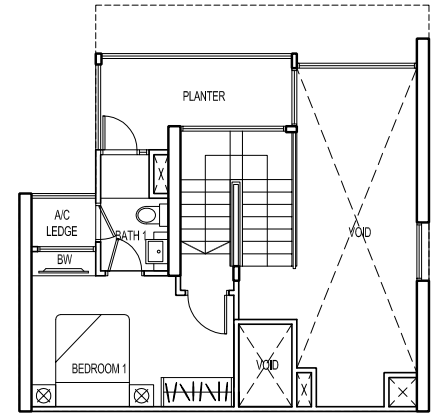
PHASE 2

TYPE D (CORNER)

945 SQ FT



LOWER LEVEL



UPPER LEVEL

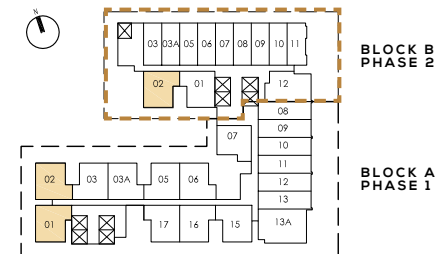
BLOCK A

#08-01 TO #18-01

#08-02 TO #18-02*

BLOCK B

#08-02 TO #18-02



DUAL-KEY



LOFT UNIT

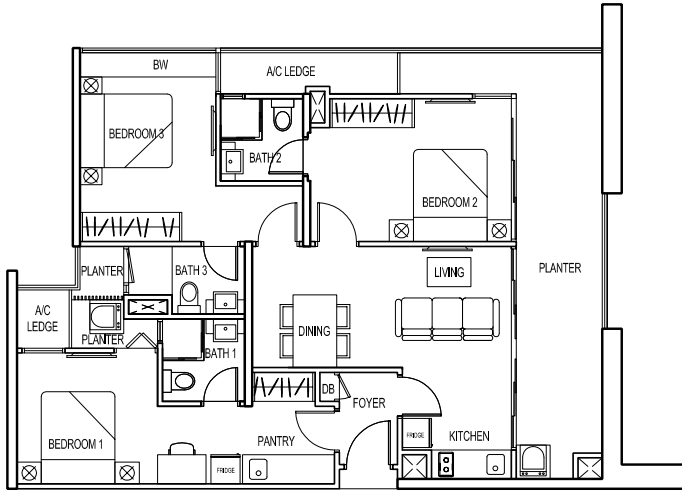


PHASE 2

* MIRRORED UNITS

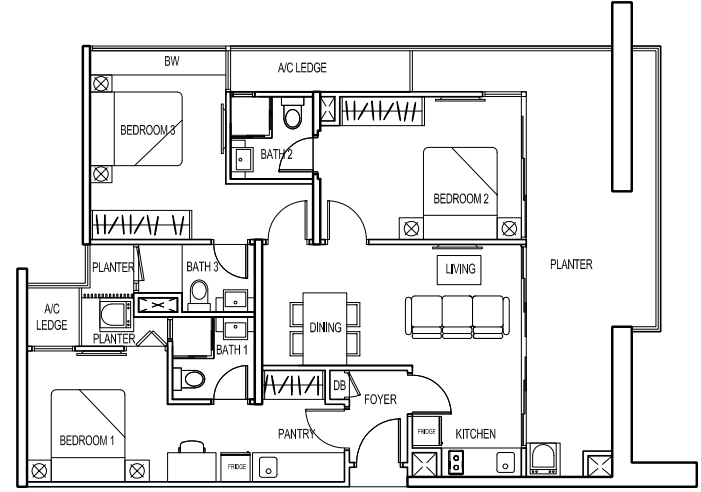
TYPE E

1120 SQ FT



TYPE E1

1180 SQ FT

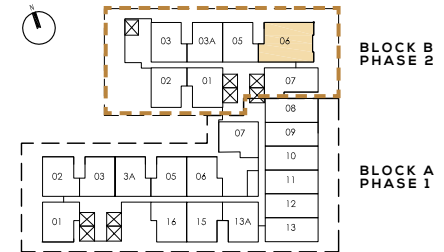
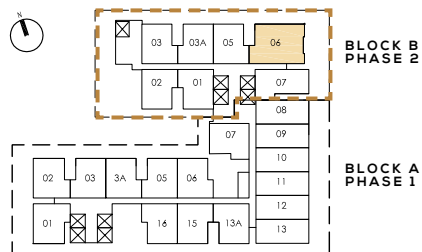


BLOCK B

| | | |
|---------|---------|--------|
| #20-06 | #28-06 | #36-06 |
| #22-06 | #30-06 | #38-06 |
| #23A-06 | #32-06 | #40-06 |
| #26-06 | #33A-06 | #42-06 |

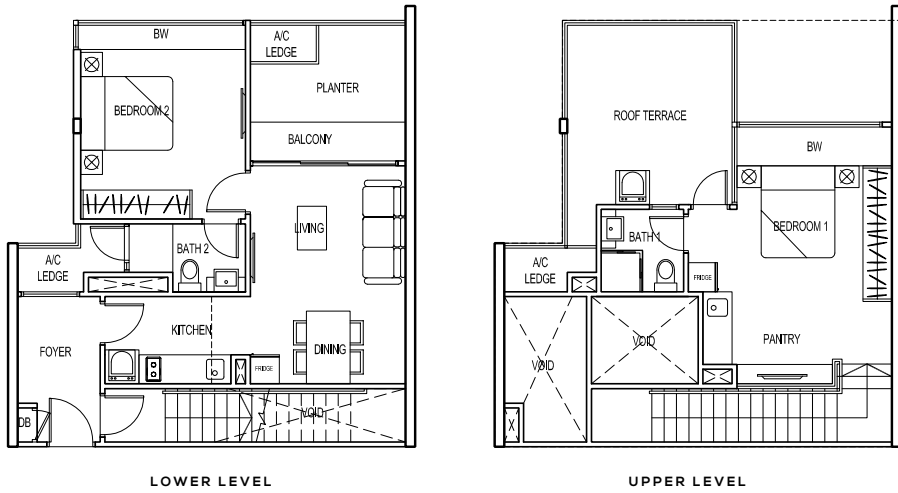
BLOCK B

| | | |
|--------|--------|--------|
| #19-06 | #27-06 | #37-06 |
| #21-06 | #29-06 | #39-06 |
| #23-06 | #31-06 | #41-06 |
| #25-06 | #33-06 | |



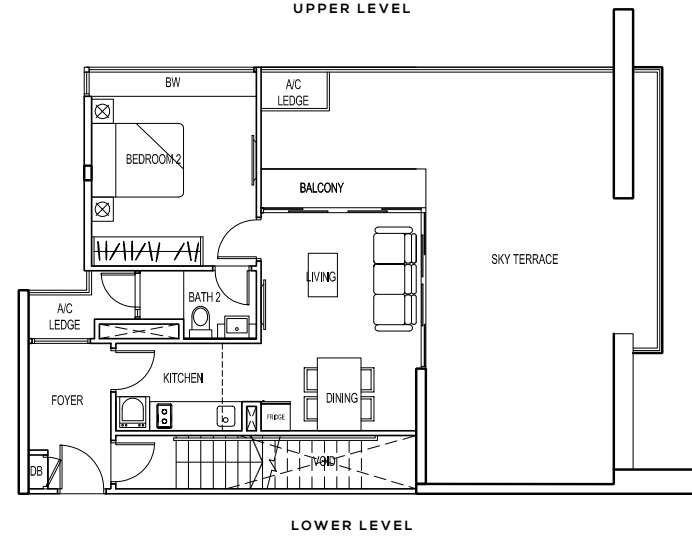
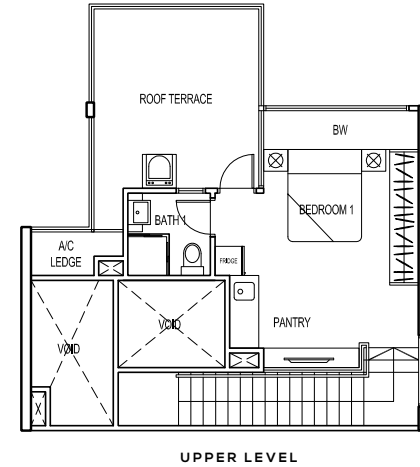
TYPE P1

1140 SQ FT



TYPE P1(A)

1035 SQ FT
ACCESSORY PARCEL 540 SQ FT



BLOCK A

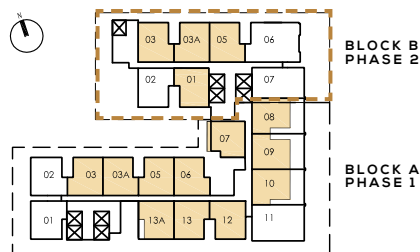
BLOCK B

- #33-03 #33-13 #33-10*
- #33-05 #33-03A* #33-12*
- #33-07 #33-06* #33-13A*
- #33-09 #33-08*

- #43-01* #43-03A
- #43-03* #43-05*

BLOCK B

#43-06

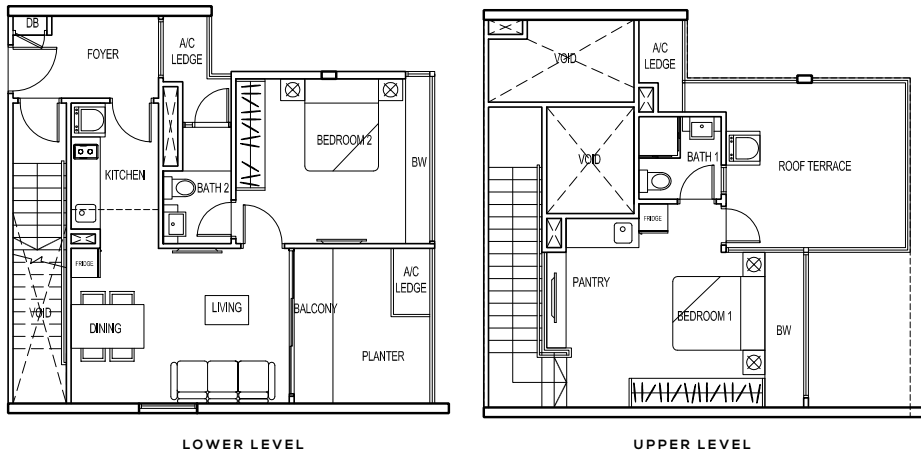


DUAL-KEY PHASE 2 * MIRRORED UNITS

DUAL-KEY PHASE 2

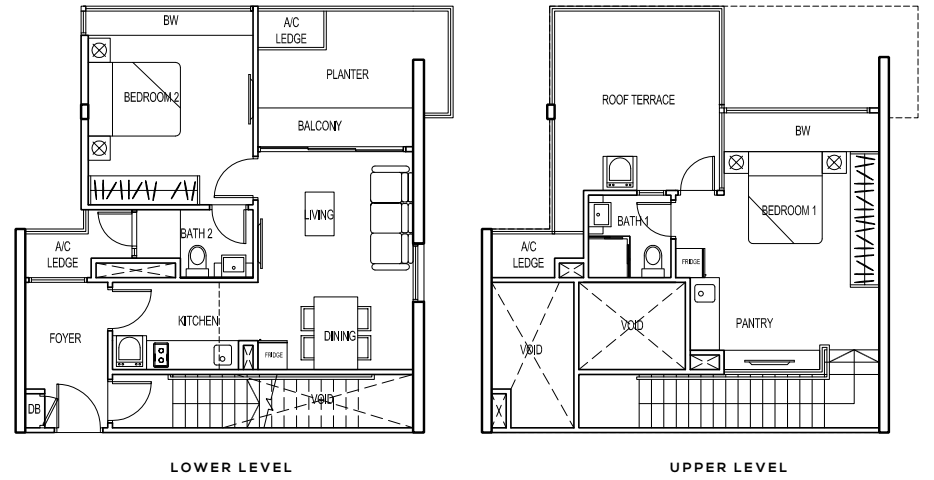
TYPE P1(B)

1140 SQ FT



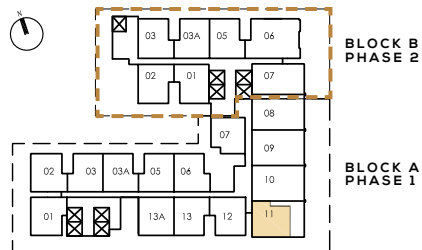
TYPE P1 (CORNER)

1155 SQ FT



BLOCK A

#33-11



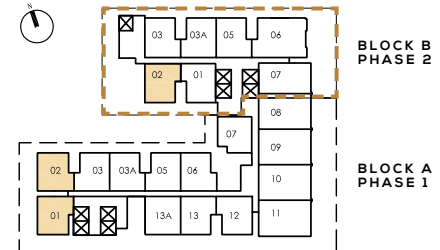
DUAL-KEY PHASE 2

BLOCK A

#33-01 #33-02*

BLOCK B

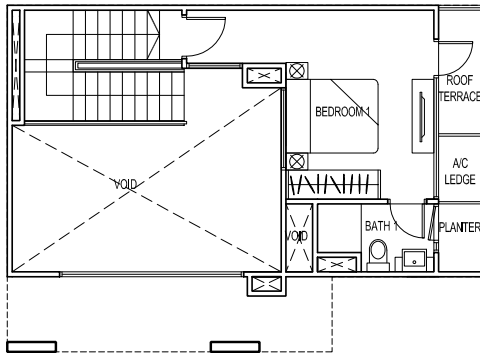
#43-02



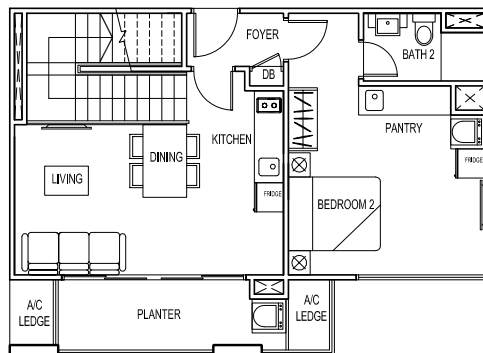
DUAL-KEY PHASE 2 * MIRRORED UNITS

TYPE P2

960 SQ FT



UPPER LEVEL

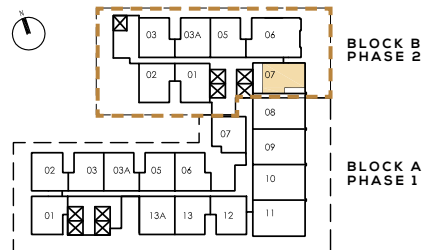



LOWER LEVEL

RETAIL

BLOCK B

#43-07



 DUAL-KEY

 LOFT UNIT

 PHASE 2

LEVEL ONE
COMMERCIAL



GROUND FLOOR
COMMERCIAL

TREN

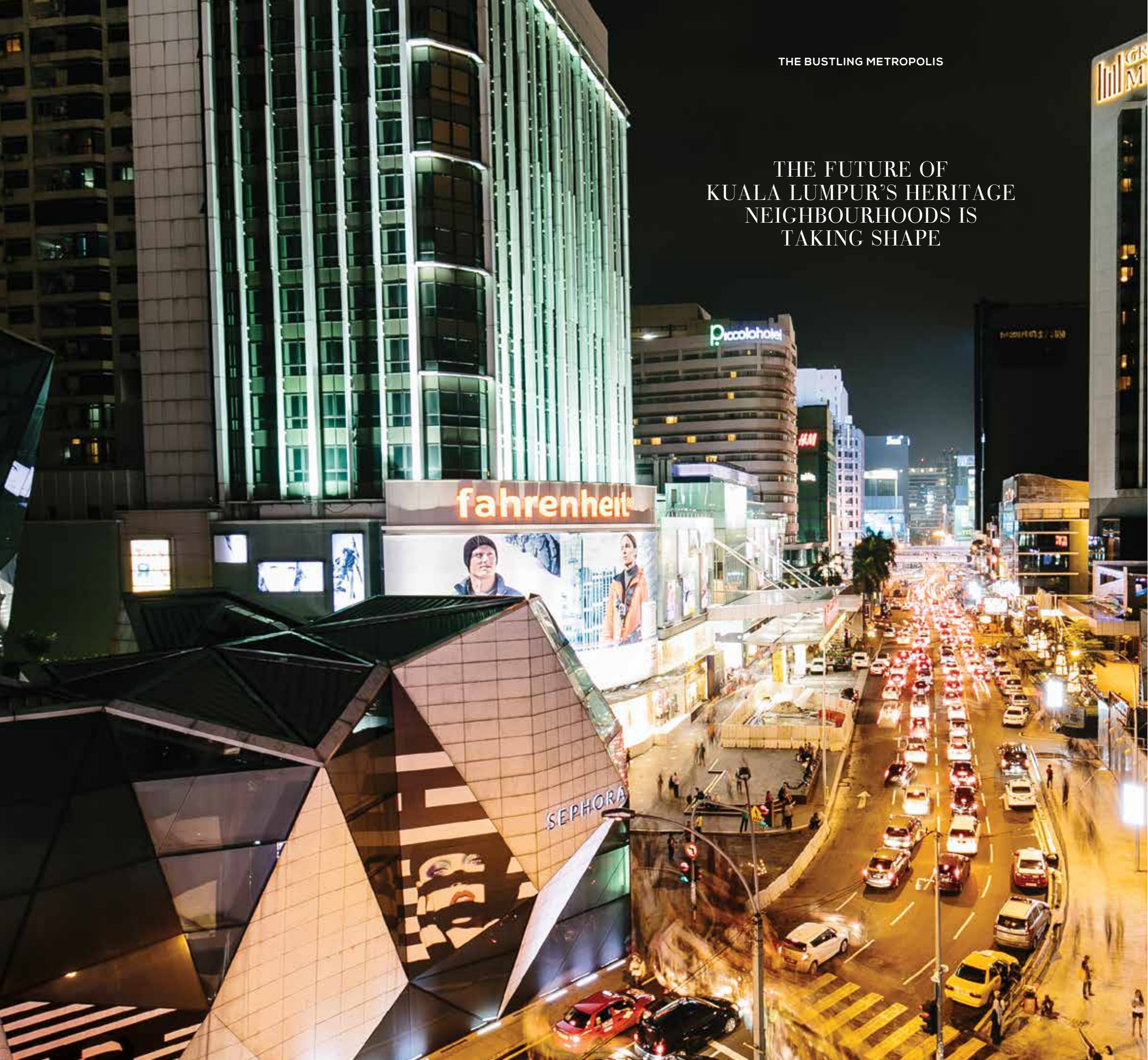
COSCE

JUICE

CAFFE

THE BUSTLING METROPOLIS

THE FUTURE OF
KUALA LUMPUR'S HERITAGE
NEIGHBOURHOODS IS
TAKING SHAPE





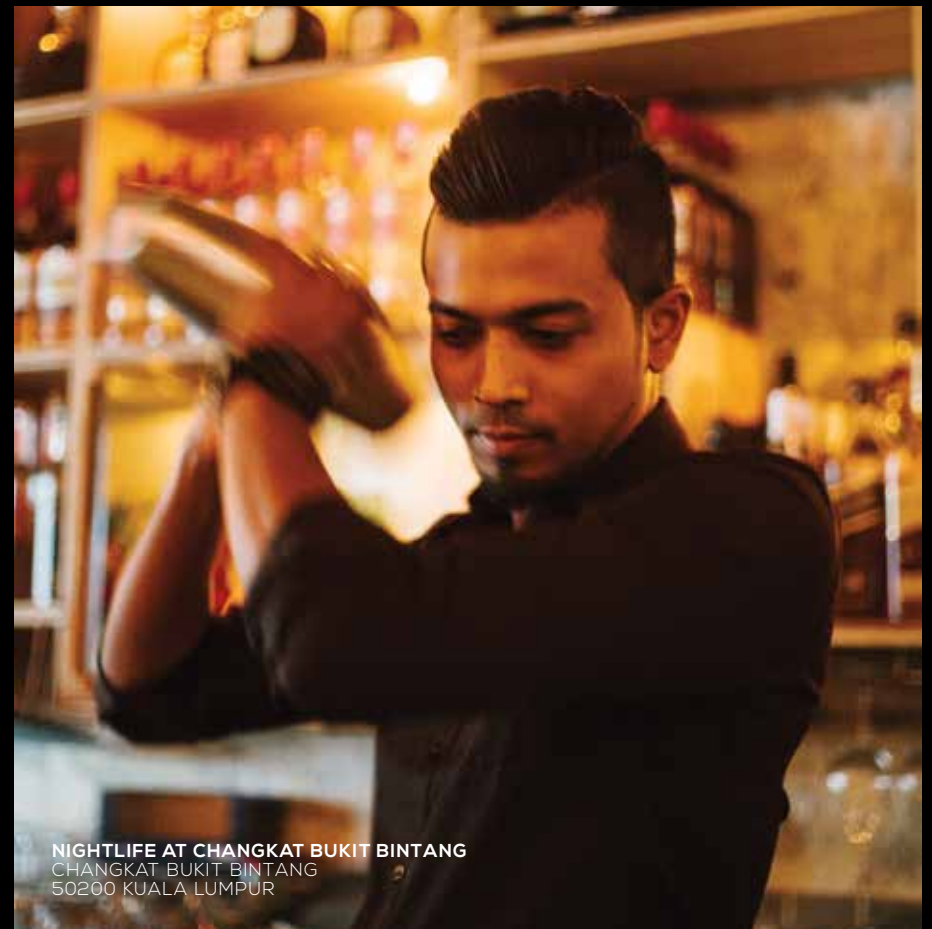
JALAN ALOR FOOD STREET
16-90, JALAN ALOR
50200 KUALA LUMPUR



QUILL CITY MALL
1018, JALAN SULTAN ISMAIL
50250 KUALA LUMPUR



BEN'S INDEPENDENT GROCER
B1-G1-13 SOLARIS DUTAMAS
NO. 1 JALAN DUTAMAS 1
50480 KUALA LUMPUR



NIGHTLIFE AT CHANGKAT BUKIT BINTANG
CHANGKAT BUKIT BINTANG
50200 KUALA LUMPUR



LOKL
30 JALAN TUN H S LEE
50000 KUALA LUMPUR



KAMPUNG BARU
KUALA LUMPUR

BUILDING SPECIFICATIONS & DEVELOPER INFORMATION

RESIDENTIAL UNITS' SPECIFICATIONS

1. STRUCTURE

Reinforced Concrete Frame

2. WALLS

Brick wall and/or Reinforced Concrete Wall

3. ROOF

Reinforced Concrete Roof

4. CEILING FINISHES

Skim Coat with/without box-up with Emulsion Paint
Plaster Board Ceiling (Bathrooms only)

5. WINDOWS

Aluminium Framed Glass Windows

6. DOORS

- a. Main Entrance: Timber Fire Door
- b. Bedrooms, Bathrooms: Timber Flushed Door
- c. Balcony, Planter, Roof Terrace, Sky Terrace [for Types P1, P1(A), P1(B), P1(Corner) only]:
Aluminium Framed Glass Door

7. IRONMONGERY

Quality Locksets

8. FLOOR FINISHES

- a. Entrance, Foyer, Living, Dining, Kitchen, Bathrooms, Balcony: Quality Tiles
- b. Pantry, Dining (at Type A Pantry), Bedrooms: Laminated Timber Flooring
- c. Planter, Roof Terrace, Sky Terrace [for Types P1, P1(A), P1(B), P1(Corner) only]: Cement Screed
- d. Store [Type B & B(Corner) only]: Cement Screed

9. EXTERNAL WALLS FINISHES

Plastered and/or Skim Coat Finished with External Emulsion Paint

10. INTERNAL WALL FINISHES

- a. Living, Dining, Kitchen, Bedrooms: Plastered and/or Skim Coat Finished with Emulsion Paint
- b. Bathrooms: Quality Tiles (to exposed areas) up to Ceiling Height

ADDED FEATURES:

- a. Kitchen: Built-in Kitchen Cabinet with Hob and Hood, sink and tap
 - b. Pantry: Built-in Kitchen Cabinet with sink and tap
 - c. Bathroom: Quality Sanitary Wares including Shower Head, Water Closet and Wash Basin
 - d. Water Heater: Electrical Storage Water Heater
 - e. Air-Conditioning: Split type air-conditioning unit to engineer's detail
-

DEVELOPER

ROXY-PACIFIC HOLDINGS LIMITED



SPOTTISWOODE 18



NOVA 88



AN ESTABLISHED PROPERTY AND HOSPITALITY GROUP WITH AN ASIA-PACIFIC FOCUS

Established in May 1967, Roxy-Pacific Holdings Limited is a trusted, homegrown specialty property and hospitality group, principally engaged in the development and sale of residential properties. The Company also owns the Grand Mercure Roxy Hotel and other investment properties. We have, over the years, grown our portfolio to include both residential and commercial developments. Our landmark properties include the Grand Mercure Roxy Hotel and Roxy Square Shopping Centre. Our focus on being a developer of distinctive and high quality projects has seen us grown into a highly regarded listed property and hospitality group.

DEVELOPER

MACLY GROUP



NOTTINGHILL SUITES



ZEDGE



EON SHENTON



GUILLEMARD EDGE

MACLY GROUP IS A REAL ESTATE DEVELOPMENT COMPANY BASED IN SINGAPORE

Since 1987, Macly Group has had a track record of developing landed properties, to apartments, condominiums, mixed developments, commercial and cluster housing projects. Between 2004 to 2011, the Group developed and launched 20 developments with a total of more than 1000 residential and commercial units in Singapore. Macly Group continues to uphold its mission in providing quality and value to purchasers today.

A variety of freehold units including 1-Bedroom, 2-Bedroom, 3-bedroom, Loft and Duplex units

Selected units provide a panoramic view of the Kuala Lumpur cityscape

A comprehensive range of facilities – a Swimming Pool that overlooks the Petronas Twin Towers, as well as a Steam/Sauna Room, Gym, Wet Deck, Jacuzzi and Internet/KTV Room

Located right beside the newest lifestyle destination in Kuala Lumpur – Quill City Mall

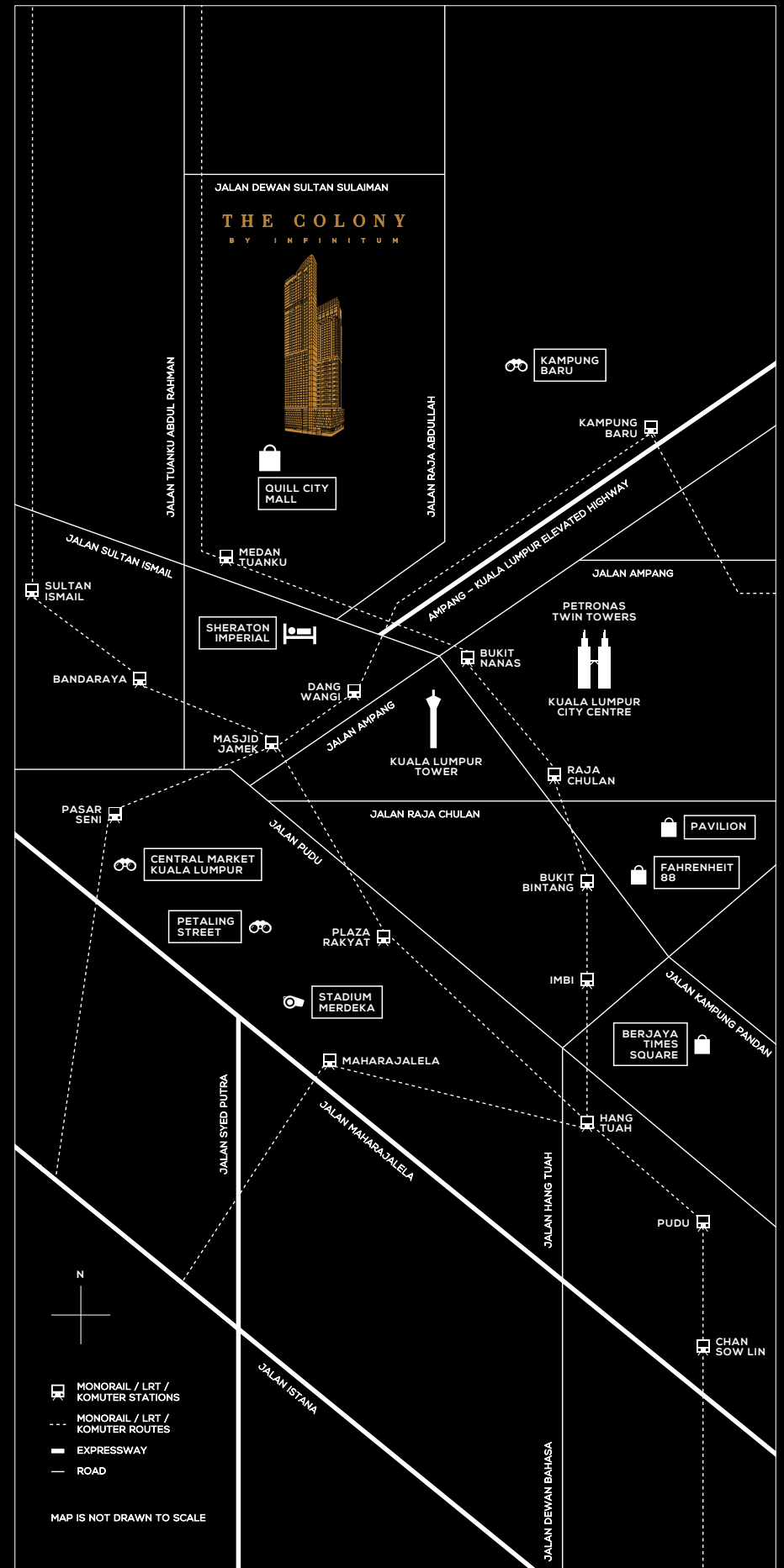
Quill City Mall has an impressive lineup of stores including major international labels and other lifestyle necessities

Near to Kuala Lumpur City Centre and Kuala Lumpur's major attractions

The monorail station in front of Quill City Mall allows for seamless access to Kuala Lumpur Sentral Interchange and Kuala Lumpur International Airport

A stone's throw away from Asian Heritage Row and Bukit Bintang

723 freehold residential units and 31 commercial units spread across three levels of retail shops



DEVELOPER

MACLY EQUITY SDN. BHD.
A PREMIUM DEVELOPMENT BROUGHT TO YOU BY

RECIPIENT OF PRESTIGIOUS
GREENRE GOLD(PROVISIONAL) AWARD



**Roxy-Pacific
Holdings Limited**



DEVELOPER LICENCE NO.: 13559-1/06-2016/0594(L) · VALIDITY PERIOD: 21-6-2014 TO 20-6-2016 · ADVERTISING & SALES PERMIT NO.: 13559-1/06-2016/0594(P) · VALIDITY PERIOD: 21-6-2014 TO 20-6-2016 · APPROVING AUTHORITY: DEWAN BANDARAYA KUALA LUMPUR · BUILDING PLAN REFERENCE NO: BP T3 OSC 2014 2393 · EXPECTED DATE OF COMPLETION FOR PHASE 1 - END SEPTEMBER 2020 · LAND TENURE: FREEHOLD · TOTAL UNITS (PHASE 1): 423 · TOTAL UNITS (PHASE 2): 300 · BUILT-UP AREA (PHASE 1): 705 SQ FT (MINIMUM) - 1,155 SQ FT (MAXIMUM) · BUILT-UP AREA (PHASE 2): 675 SQ FT (MINIMUM) - 1,575 SQ FT (MAXIMUM) · PHASE 1 MINIMUM SELLING PRICE: RM1,336,091, MAXIMUM SELLING PRICE: RM2,393,784 · PHASE 2 MINIMUM SELLING PRICE: RM1,279,477, MAXIMUM SELLING PRICE: RM3,342,051

Whilst every care has been taken in providing this information, the developer shall not held liable for any claim whatsoever arising from the use and/or reliance on the above information. All illustrations, pictures and renderings are artist's impression only, no representation or warranty is made as to the accuracy or completeness of the same. The items are subject to variation, modifications and substitutions as may be recommended by the relevant authorities or consultants. Loose furniture and fittings are illustrations only, not part of contract.

