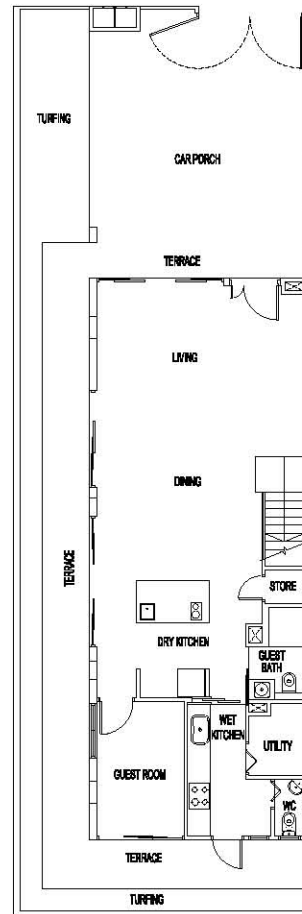


Corner Terrace – Type D1a

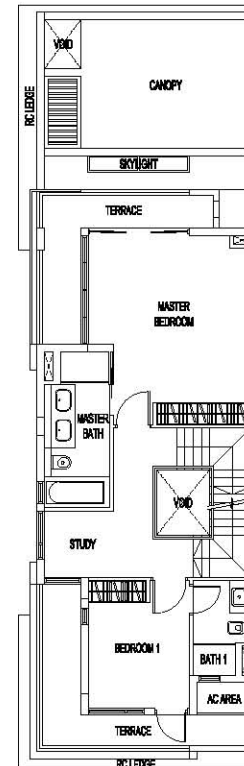
Land Area: 200 sq m / 2,153 sq ft

Estimated Floor Area: 328 sq m / 3,531 sq ft

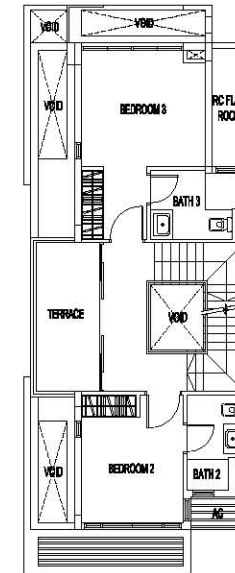
(Inclusive of Roof Terrace: 57 sq m, A/C Area: 3.4 sq m, Covered Terrace, Covered Car Porch, Terrace, Open Terrace, Open Roof Terrace, Skylight and Water Tank / Pump)



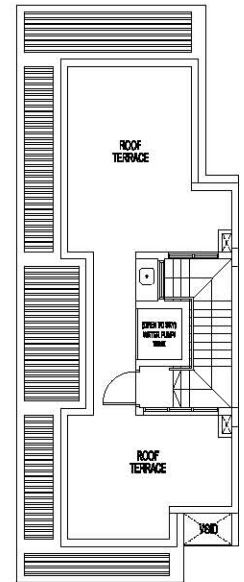
1st Storey



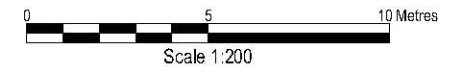
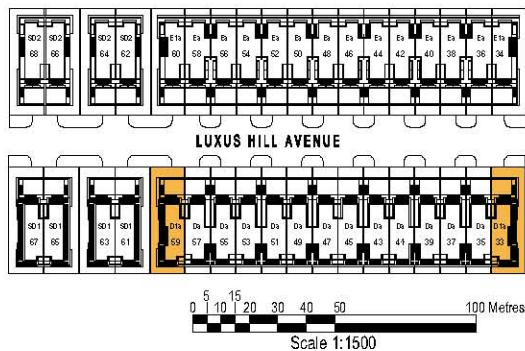
2nd Storey



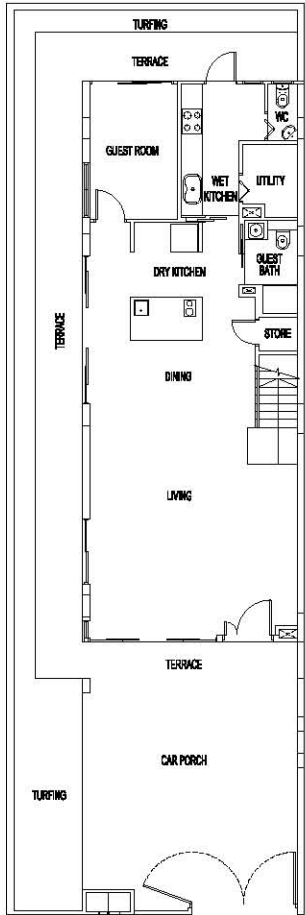
3rd Storey



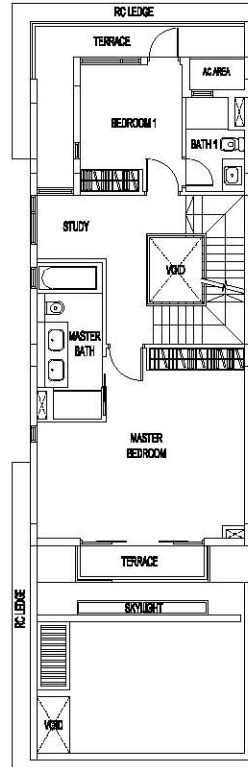
Roof Terrace



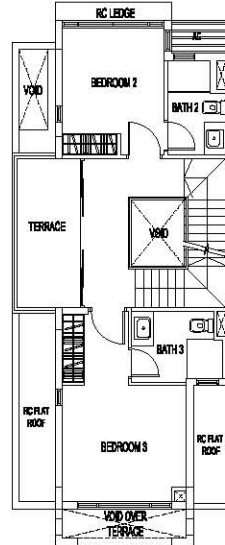
Plans are subject to change as may be required or approved by the relevant authorities. Areas are estimates only and are subject to final survey. Building Plan No.: A0506-00014-2011-BP01 dated 04 January 2012 and A0506-00014-2011-BP02 dated 05 September 2012.



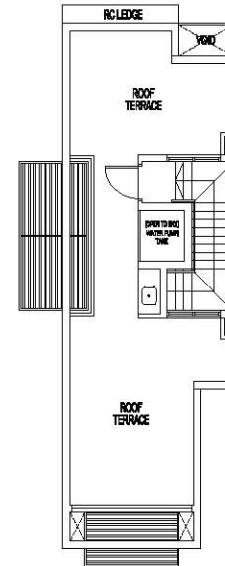
1st Storey



2nd Storey



3rd Storey



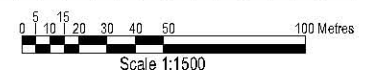
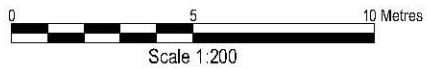
Roof Terrace

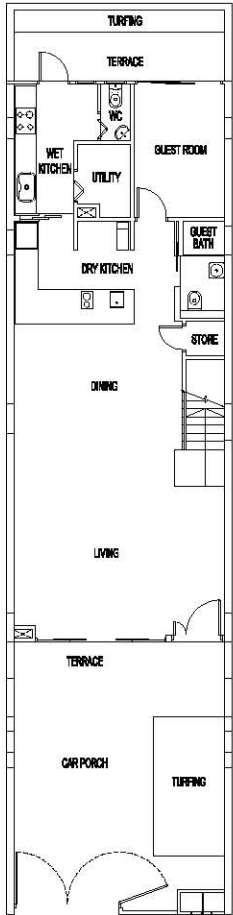
Corner Terrace – Type E1a

Land Area: 200 sq m / 2,153 sq ft

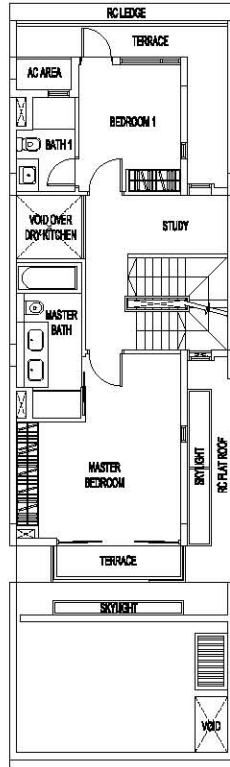
Estimated Floor Area: 328 sq m / 3,531 sq ft

(Inclusive of Roof Terrace: 57 sq m, A/C Areas: 3.4 sq m, Covered Terrace, Covered Car Porch, Terrace, Open Terrace, Open Roof Terrace, Skylight and Water Tank / Pump)

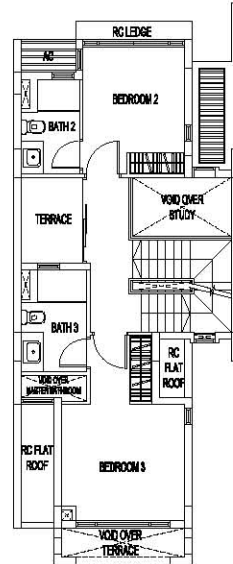




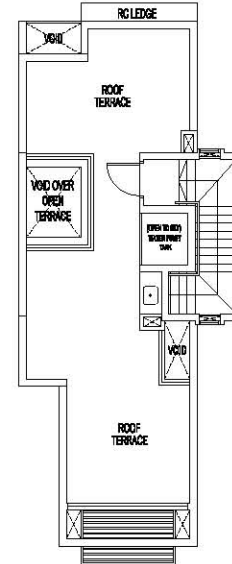
1st Storey



2nd Storey



3rd Storey

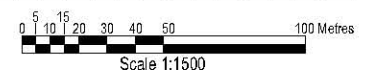
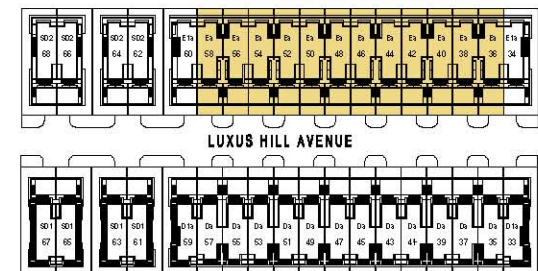
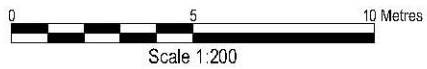


Roof Terrace

Intermediate Terrace – Type Ea

Land Area: 150 sq m / 1,615 sq ft
 Estimated Floor Area: 316 sq m / 3,401 sq ft

(Inclusive of Roof Terrace: 61 sq m, A/C Area: 3.4 sq m, Covered Terrace, Covered Car Porch, Terrace, Open Terrace, Open Roof Terrace, Skylight and Water Tank / Pump)

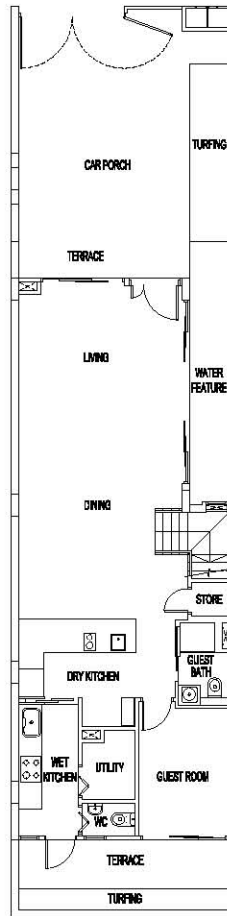


Plans are subject to change as may be required or approved by the relevant authorities. Areas are estimates only and are subject to final survey. Building Plan No.: A0506-00014-2011-BP01 dated 04 January 2012 and A0506-00014-2011-BP02 dated 05 September 2012.

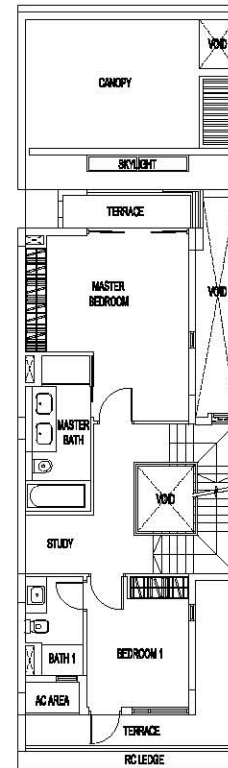
Intermediate Terrace – Type Da

Land Area: 150 sq m / 1,615 sq ft
 Estimated Floor Area: 312 sq m / 3,358 sq ft

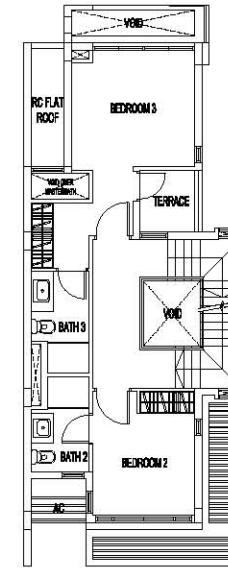
(Inclusive of Roof Terrace: 60 sq m, A/C Area: 3.9 sq m, Covered Terrace, Covered Car Porch, Terrace, Open Terrace, Open Roof Terrace, Skylight and Water Tank / Pump)



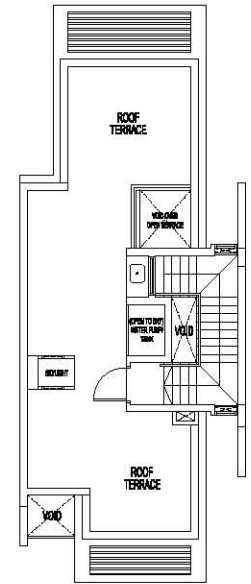
1st Storey



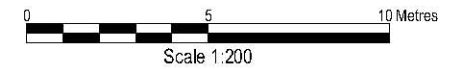
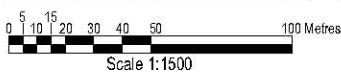
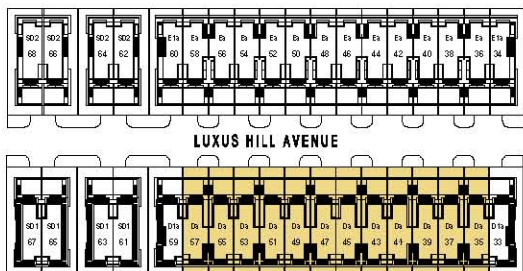
2nd Storey



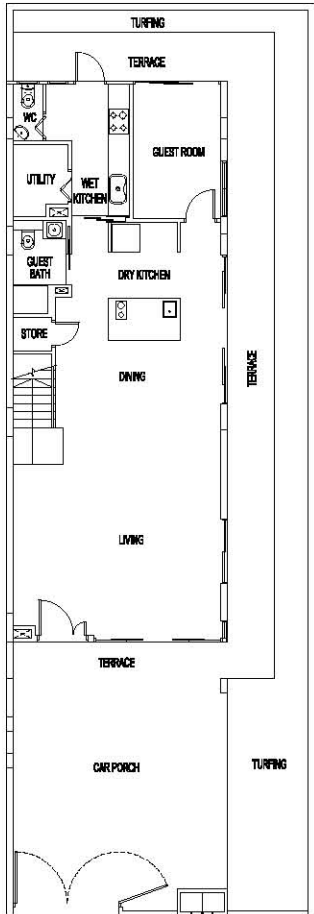
3rd Storey



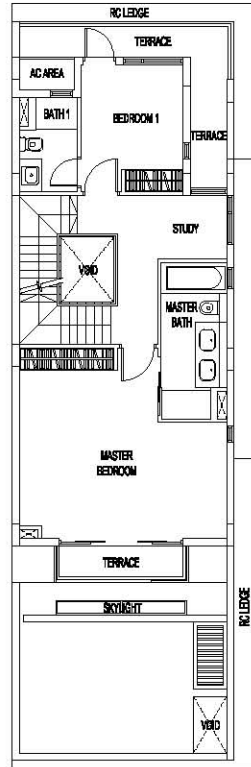
Roof Terrace



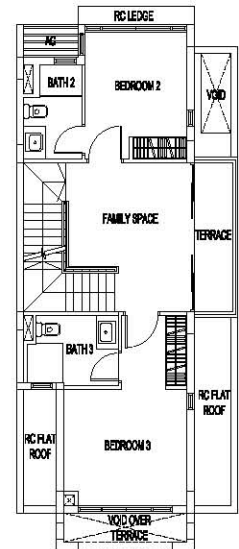
Plans are subject to change as may be required or approved by the relevant authorities. Areas are estimates only and are subject to final survey. Building Plan No.: A0506-00014-2011-BP01 dated 04 January 2012 and A0506-00014-2011-BP02 dated 05 September 2012.



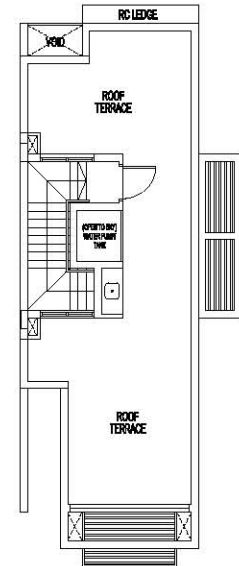
1st Storey



2nd Storey



3rd Storey

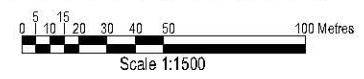
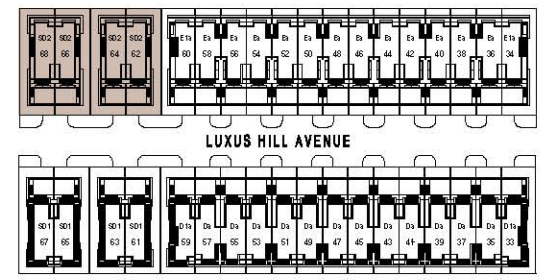
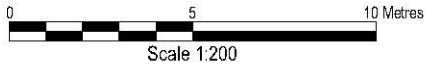


Roof Terrace

Semi-Detached – Type SD2

Land Area: 207.5 sq m / 2,234 sq ft
 Estimated Floor Area: 333 sq m / 3,584 sq ft

(Inclusive of Roof Terrace: 60 sq m, A/C Area: 3.4 sq m, Covered Terrace, Covered Car Porch, Terrace, Open Terrace, Open Roof Terrace, Skylight and Water Tank / Pump)

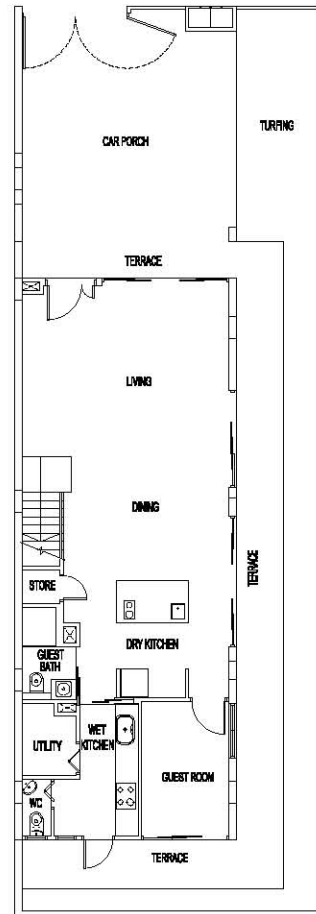


Plans are subject to change as may be required or approved by the relevant authorities. Areas are estimates only and are subject to final survey. Building Plan No.: A0506-00014-2011-BP01 dated 04 January 2012 and A0506-00014-2011-BP02 dated 05 September 2012.

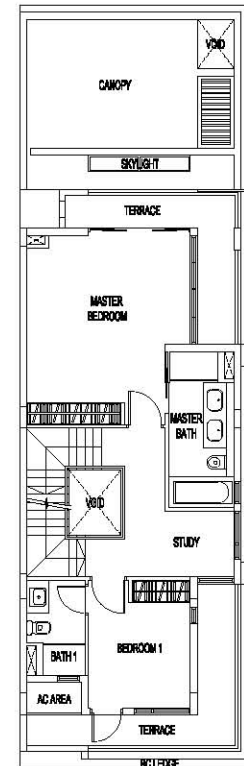
Semi-Detached – Type SD1

Land Area: 208.8 sq m / 2,248 sq ft
 Estimated Floor Area: 331 sq m / 3,563 sq ft

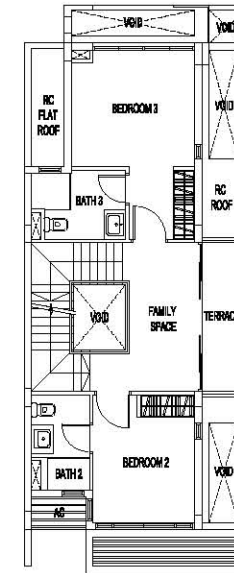
(Inclusive of Roof Terrace: 60 sq m, A/C Area: 3.4 sq m, Covered Terrace, Covered Car Porch, Terrace, Open Terrace, Open Roof Terrace, Skylight and Water Tank / Pump)



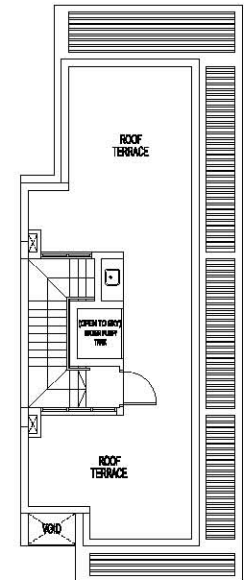
1st Storey



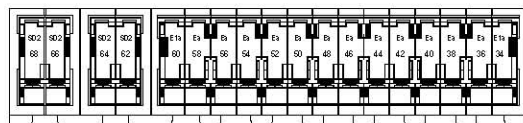
2nd Storey



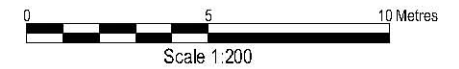
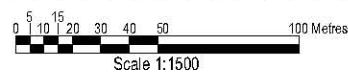
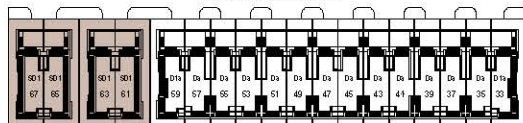
3rd Storey



Roof Terrace



LUXUS HILL AVENUE



Plans are subject to change as may be required or approved by the relevant authorities. Areas are estimates only and are subject to final survey. Building Plan No.: A0506-00014-2011-BP01 dated 04 January 2012 and A0506-00014-2011-BP02 dated 05 September 2012.