

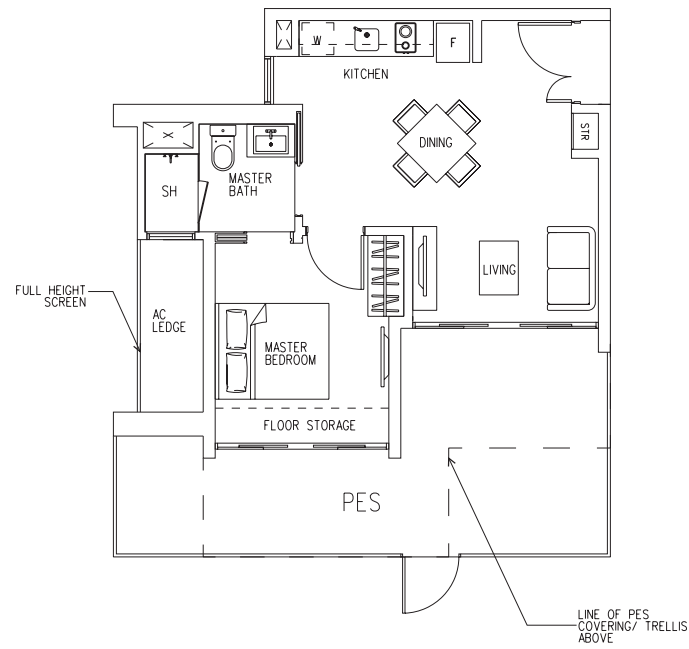
1-BEDROOM APARTMENT

Type A1 (PES)

66 sq m (710 sq ft)

Block 34

#01-13



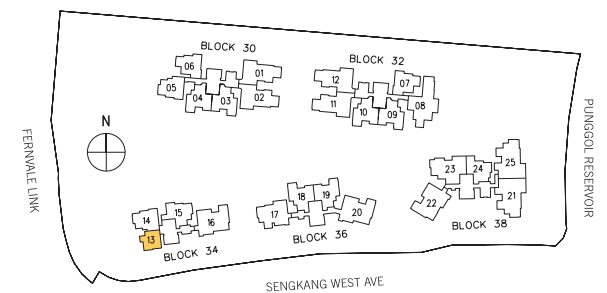
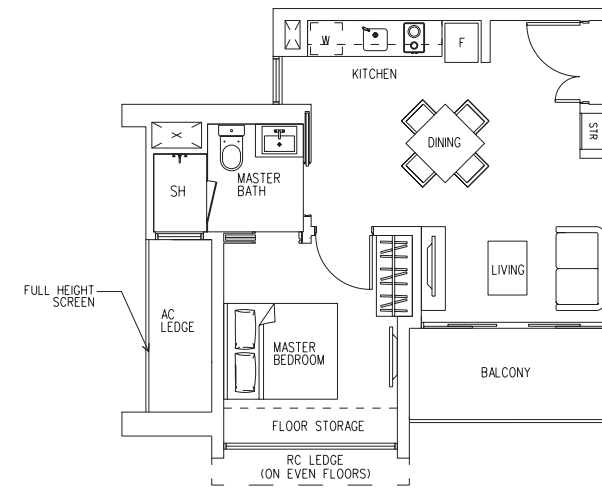
1-BEDROOM APARTMENT

Type A1

49 sq m (527 sq ft)

Block 34

#02-13 to #19-13

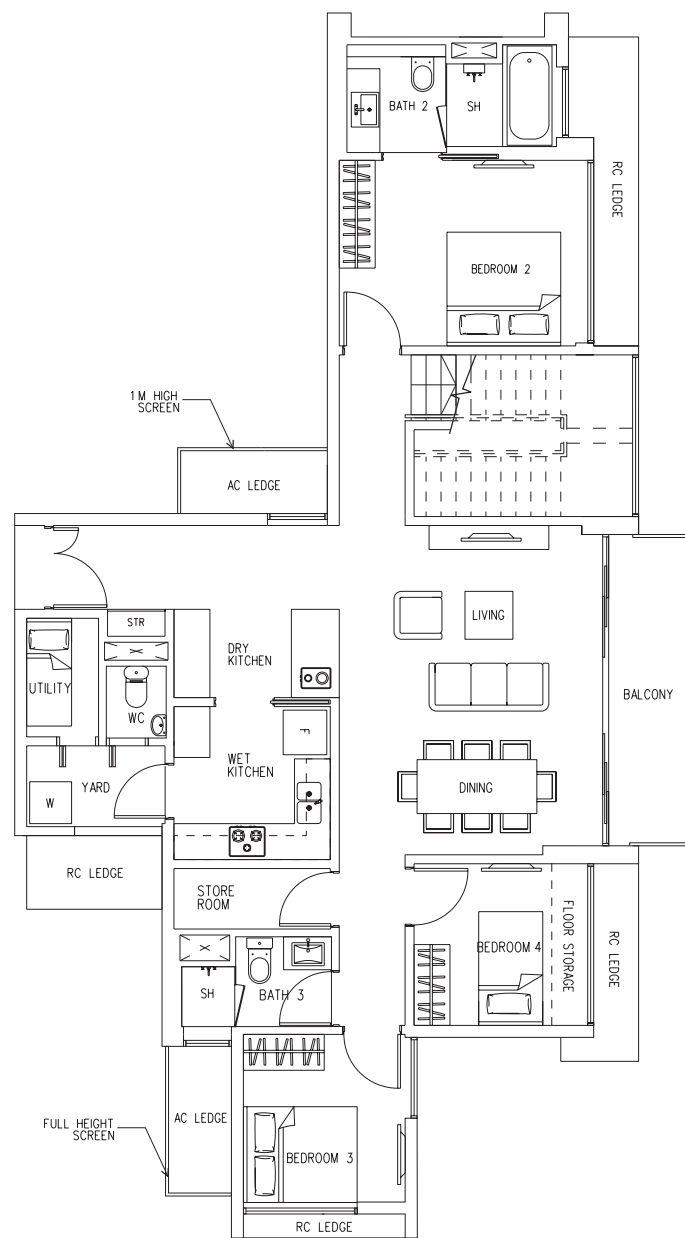


PENTHOUSE

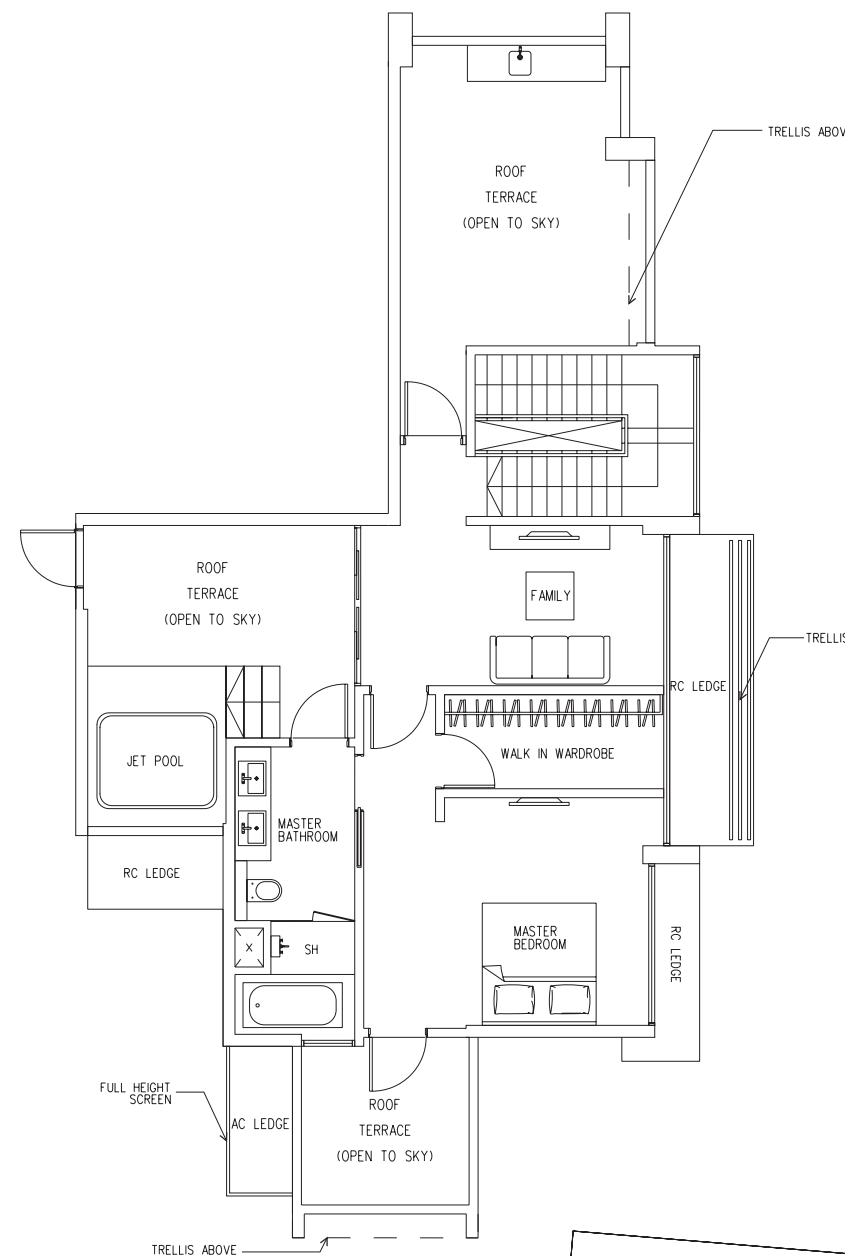
Type PH1

252 sq m (2,713 sq ft)

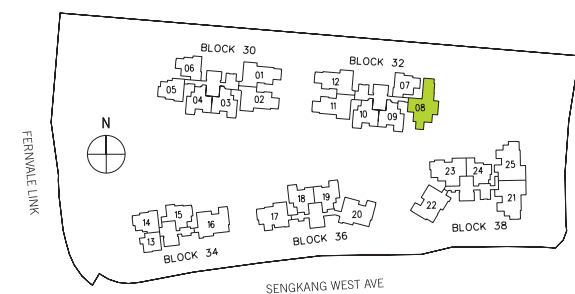
Block 32
#22-08



Lower Level



Upper Level



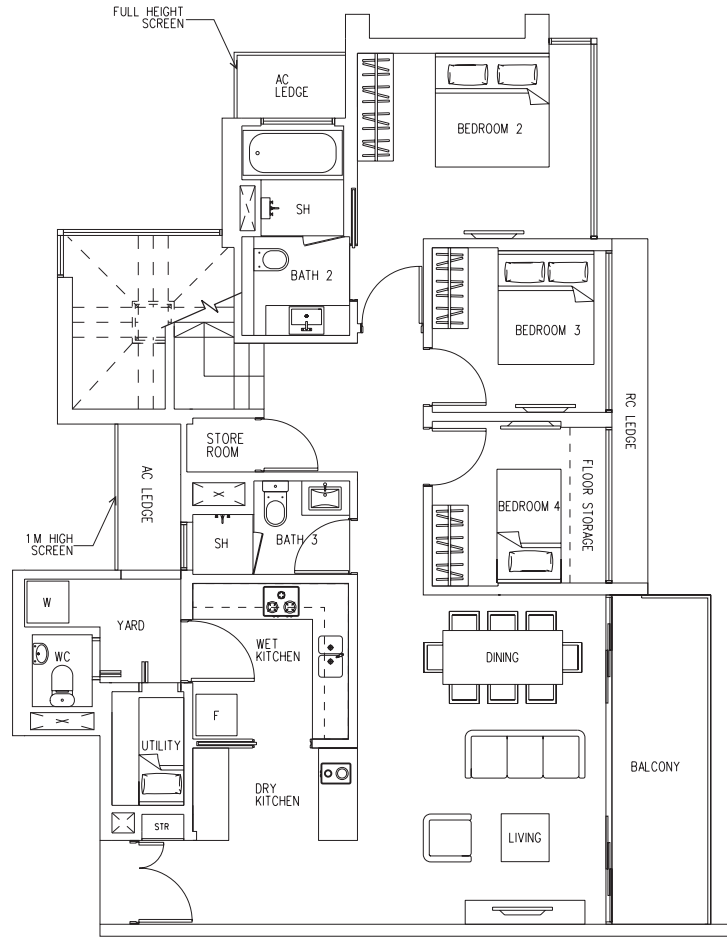
PENTHOUSE

Type PH2

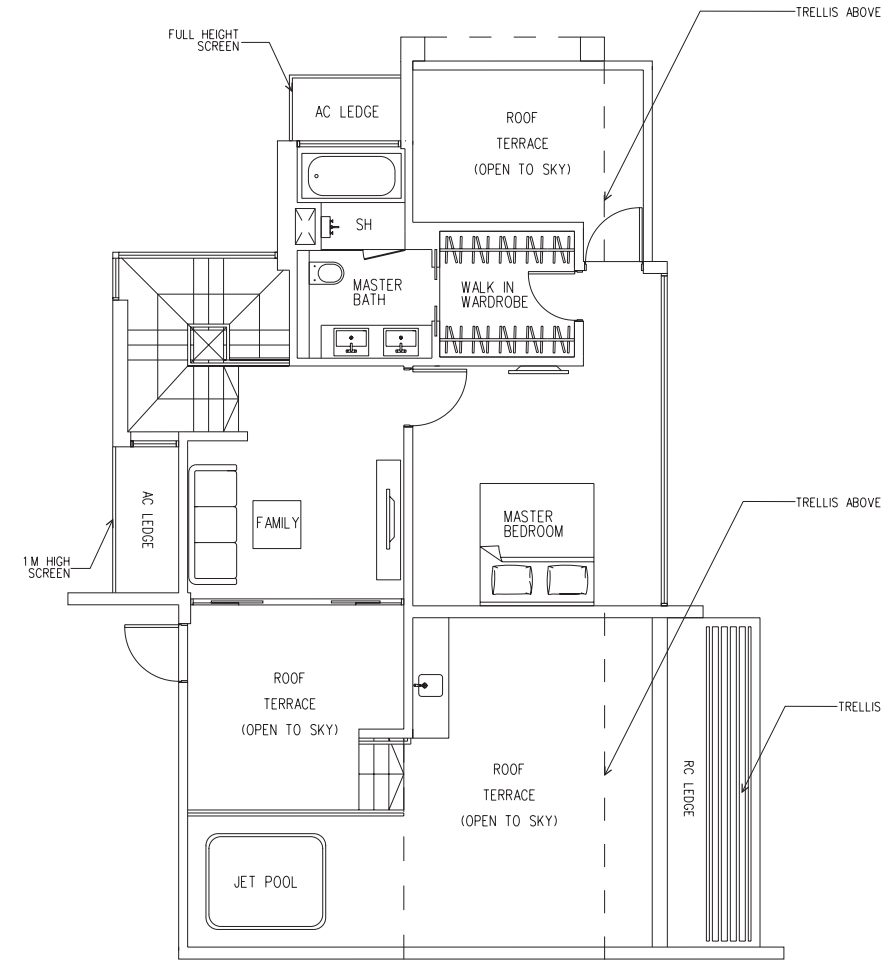
247 sq m (2,659 sq ft)

Block 38

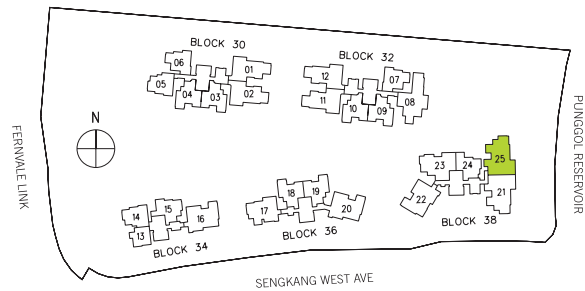
#21-25



Lower Level



Upper Level



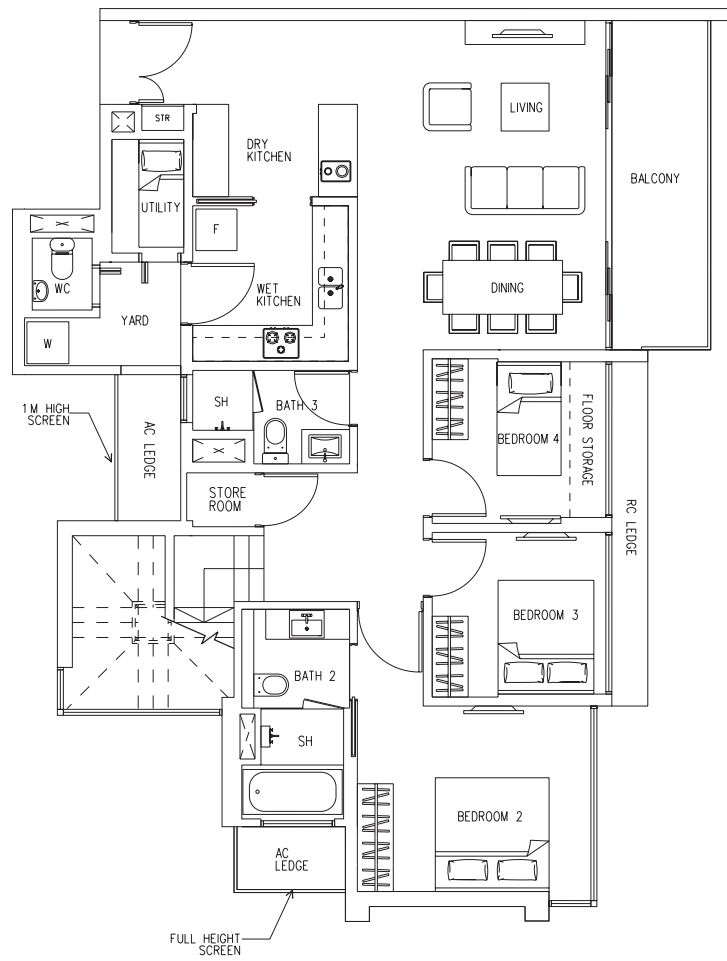
PENTHOUSE

Type PH3

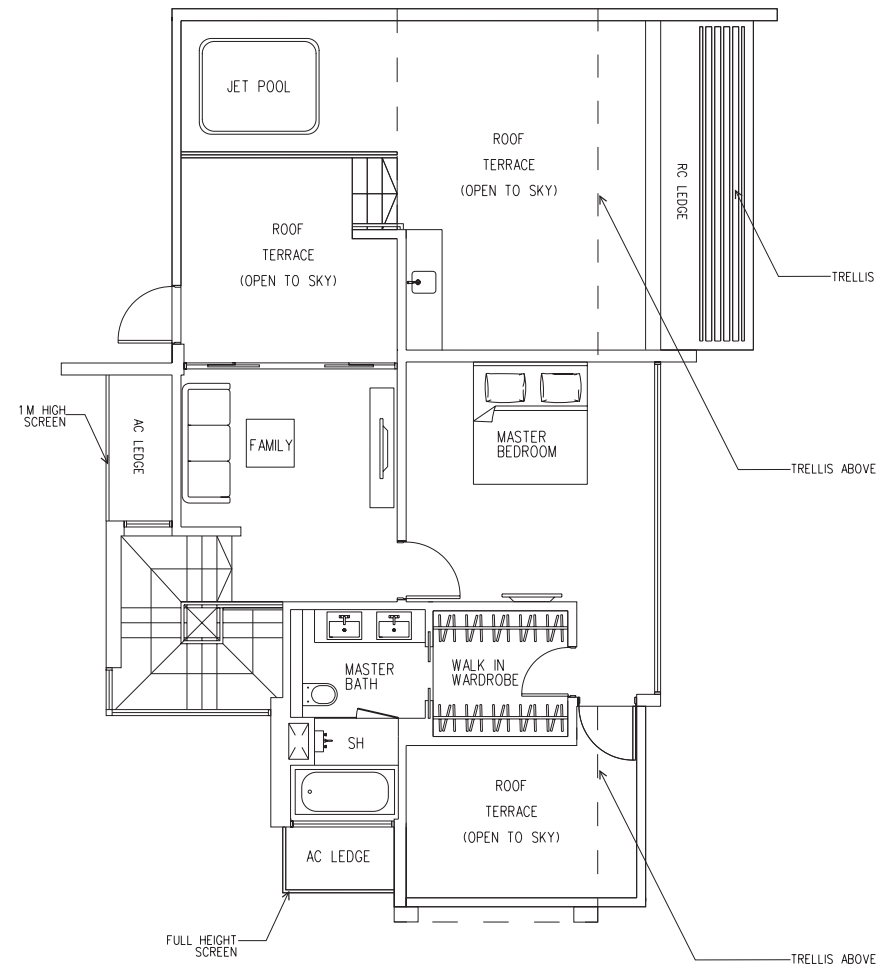
247 sq m (2,659 sq ft)

Block 38

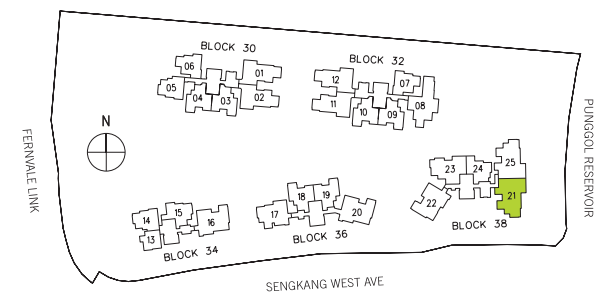
#21-21



Lower Level



Upper Level

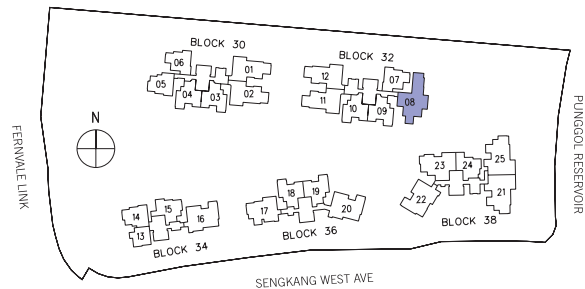
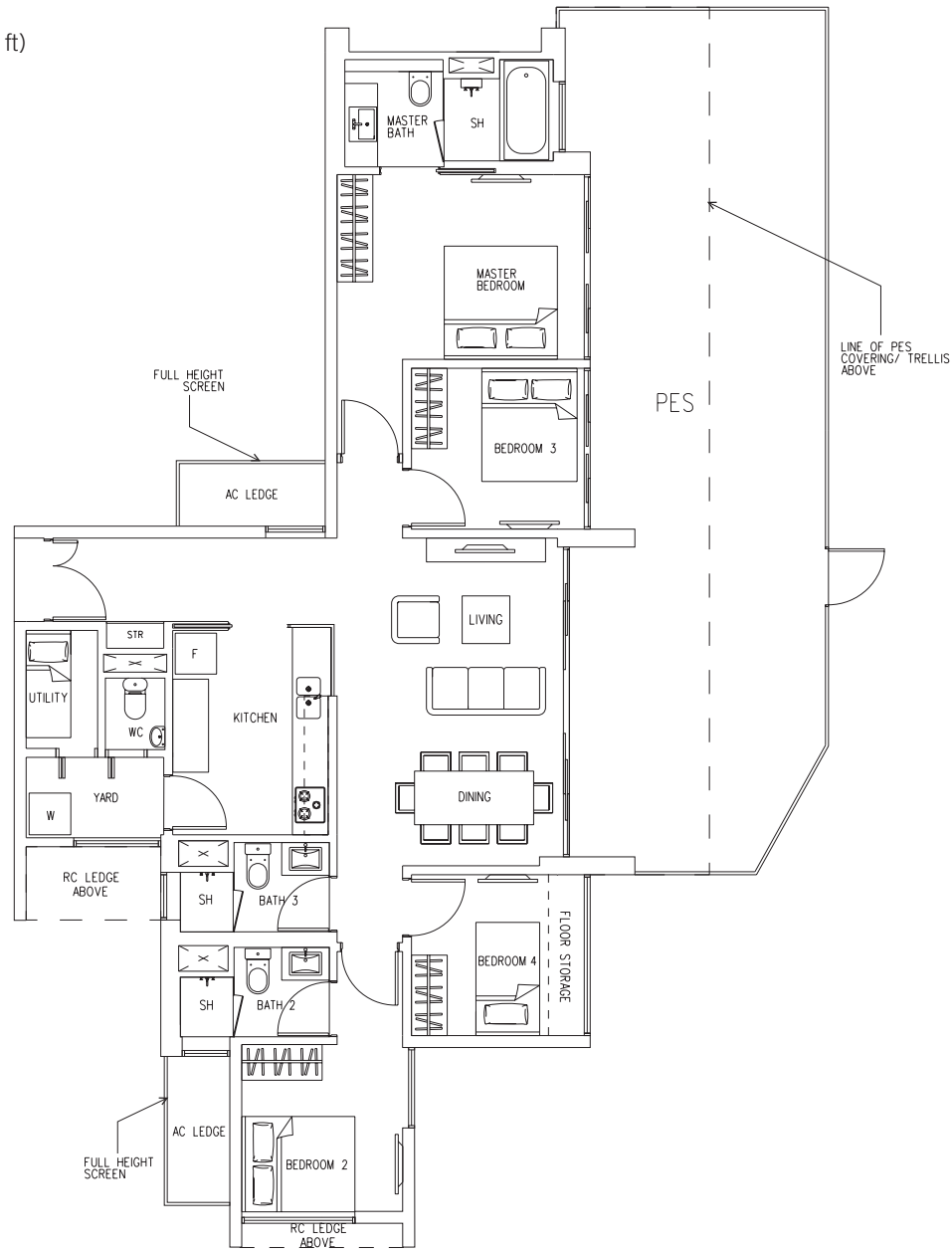


4-BEDROOM APARTMENT

Type F1 (PES)

177 sq m (1,905 sq ft)

Block 32
#01-08

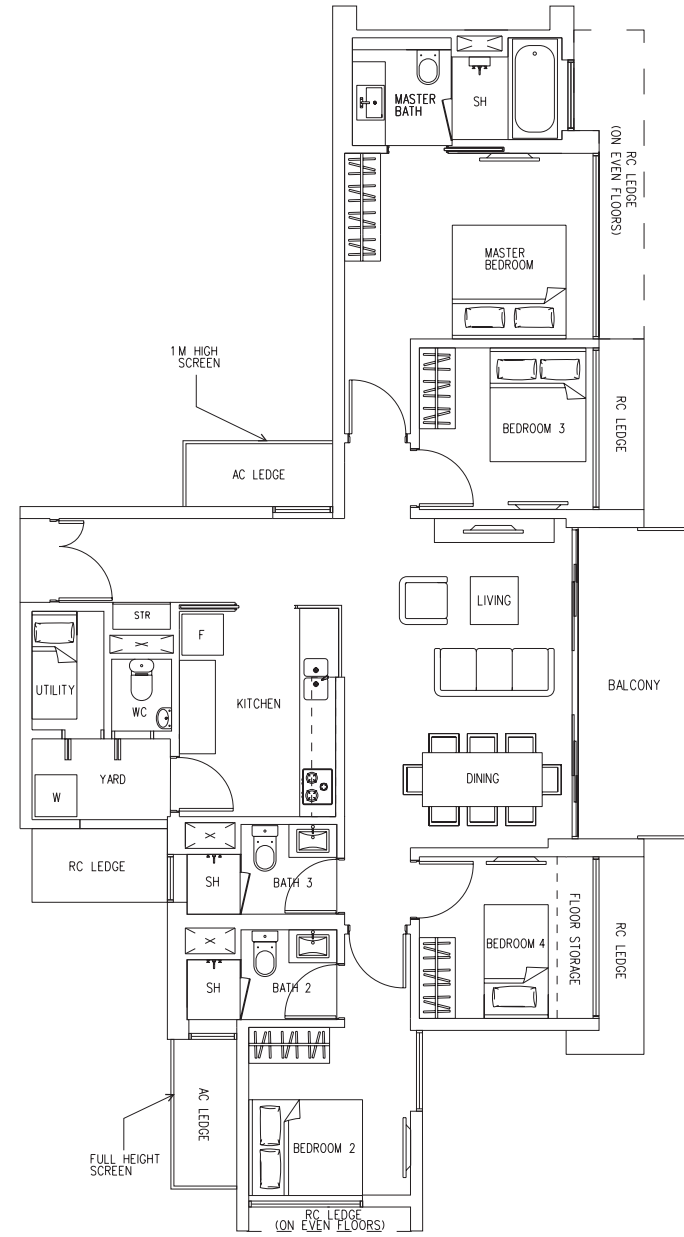


4-BEDROOM APARTMENT

Type F1

128 sq m (1,378 sq ft)

Block 32
#02-08 to #21-08



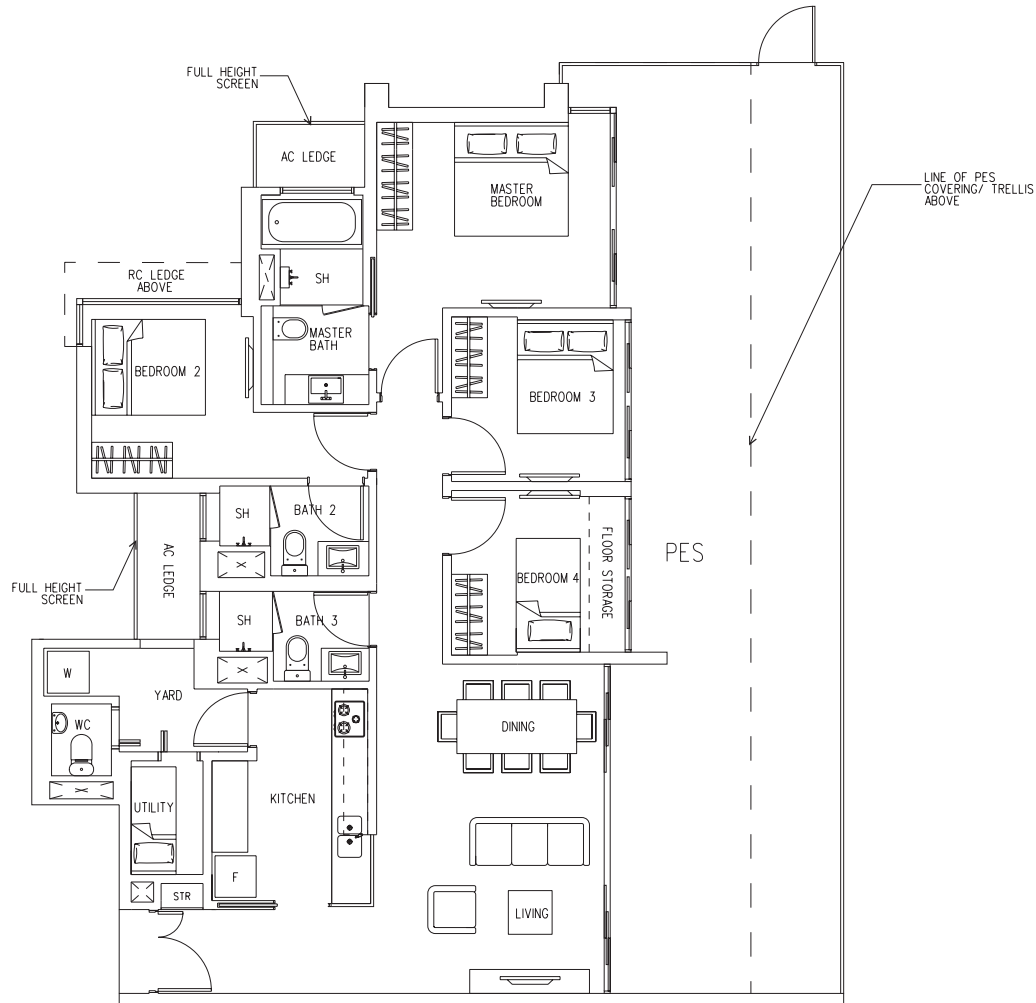
4-BEDROOM APARTMENT

Type F2 (PES)

176 sq m (1,894 sq ft)

Block 38

#01-25



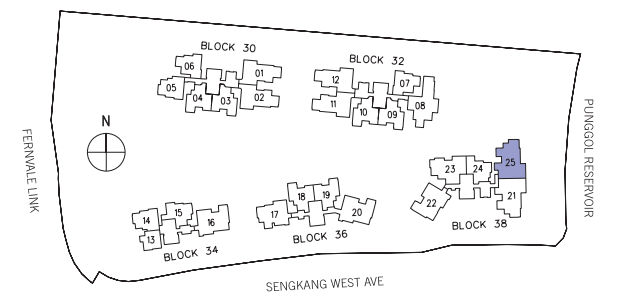
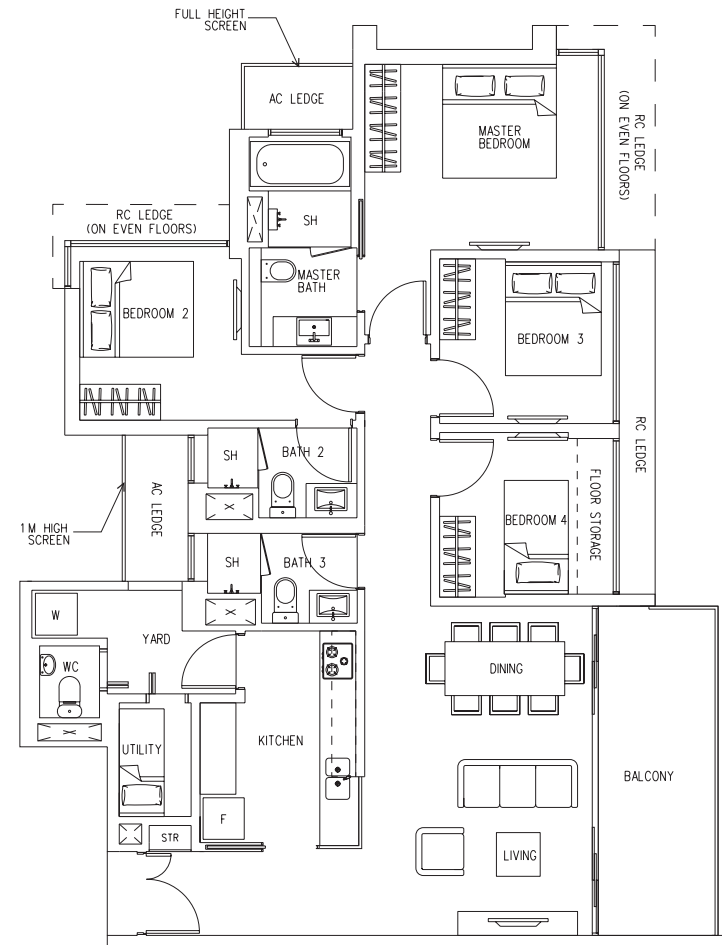
4-BEDROOM APARTMENT

Type F2

129 sq m (1,389 sq ft)

Block 38

#02-25 to #20-25

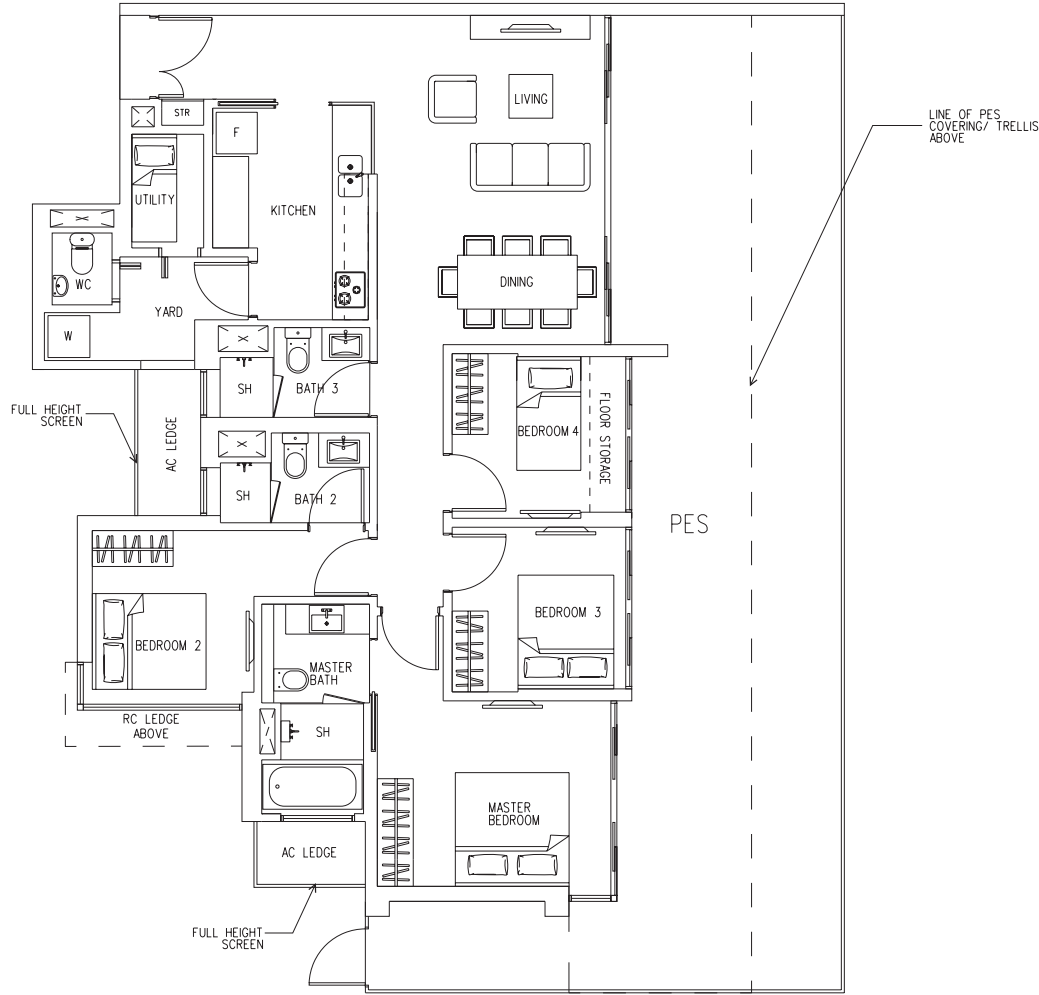


4-BEDROOM APARTMENT

Type F3 (PES)

185 sq m (1,991 sq ft)

Block 38
#01-21

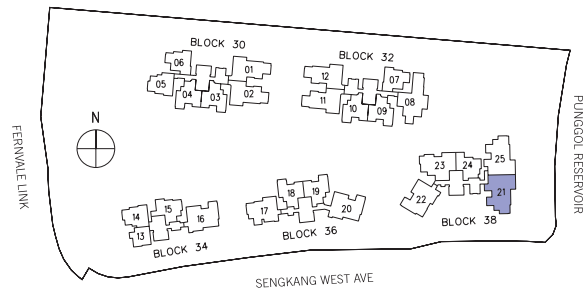
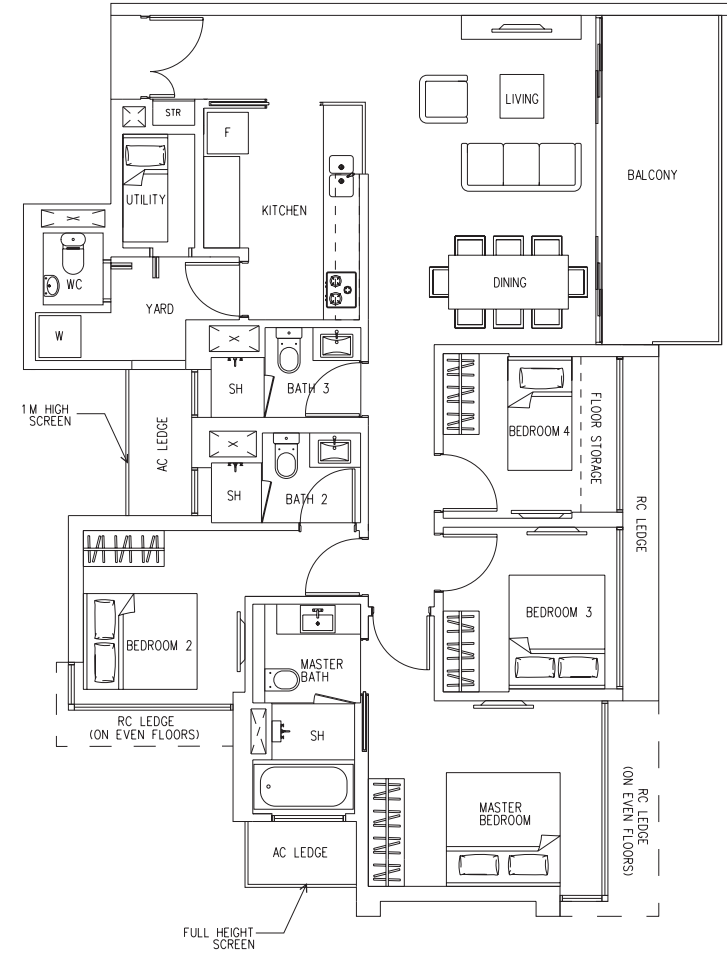


4-BEDROOM APARTMENT

Type F3

129 sq m (1,389 sq ft)

Block 38
#02-21 to #20-21



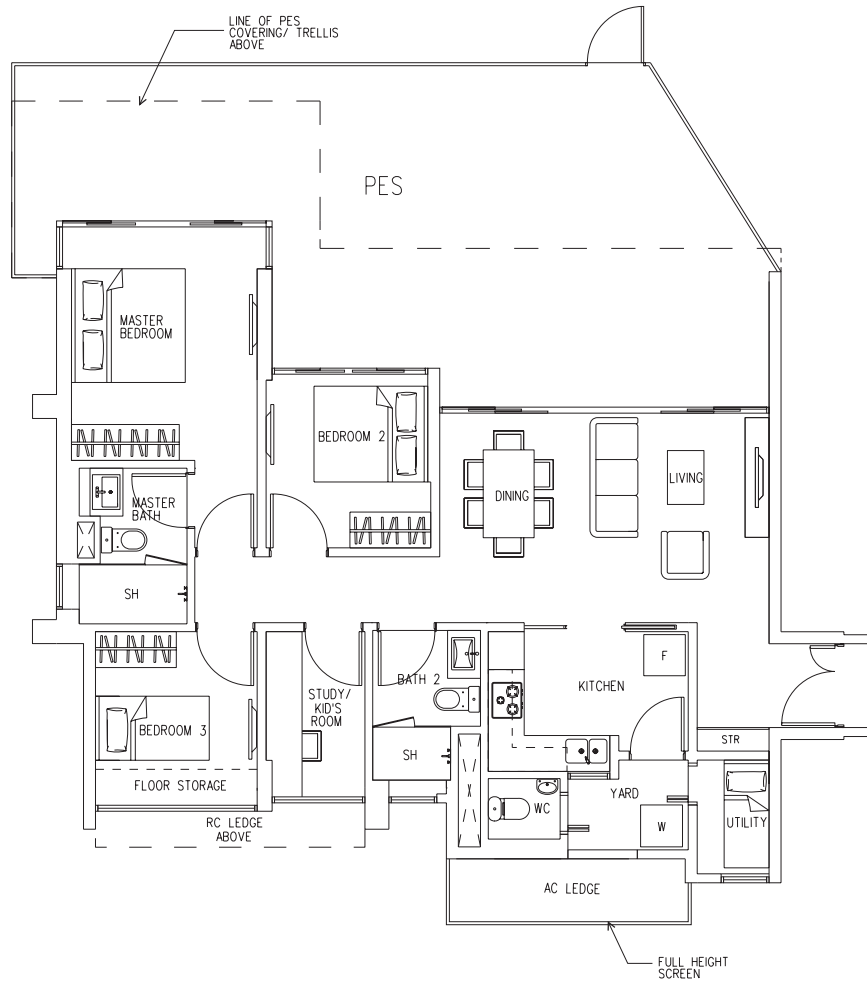
3-BEDROOM + STUDY/KID'S ROOM

Type E1 (PES)

155 sq m (1,668 sq ft)

Block 38

#01-22



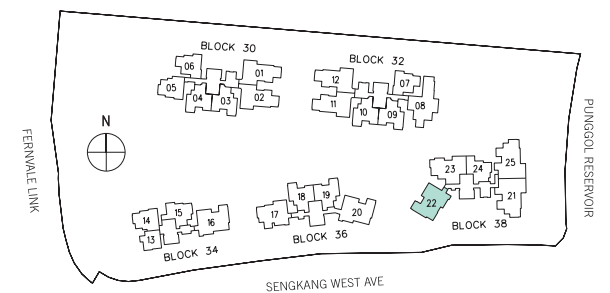
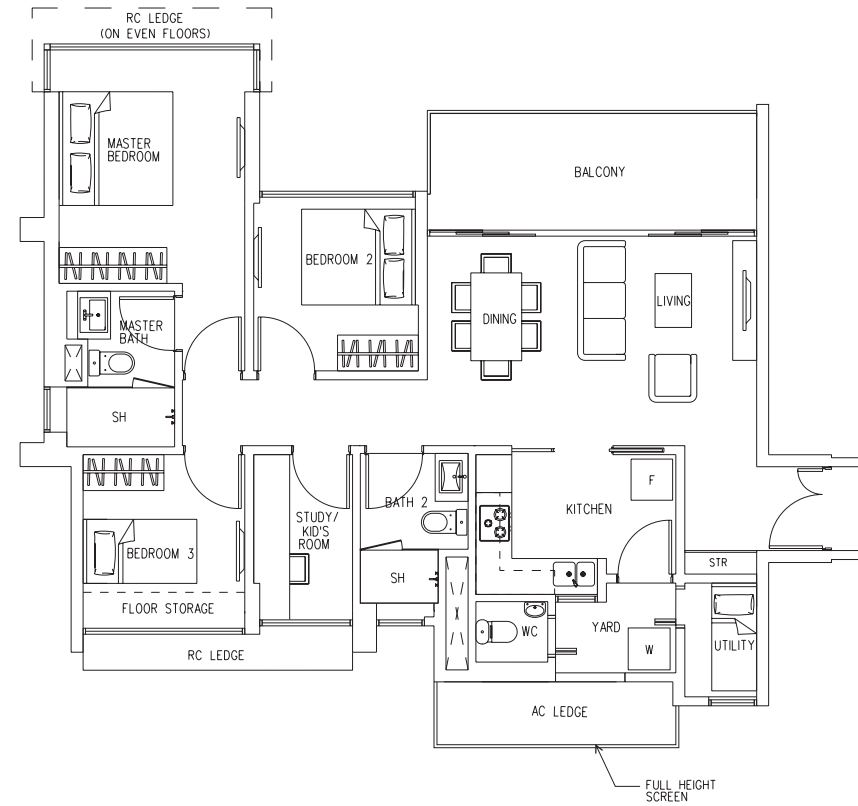
3-BEDROOM + STUDY/KID'S ROOM

Type E1

111 sq m (1,195 sq ft)

Block 38

#02-22 to #21-22



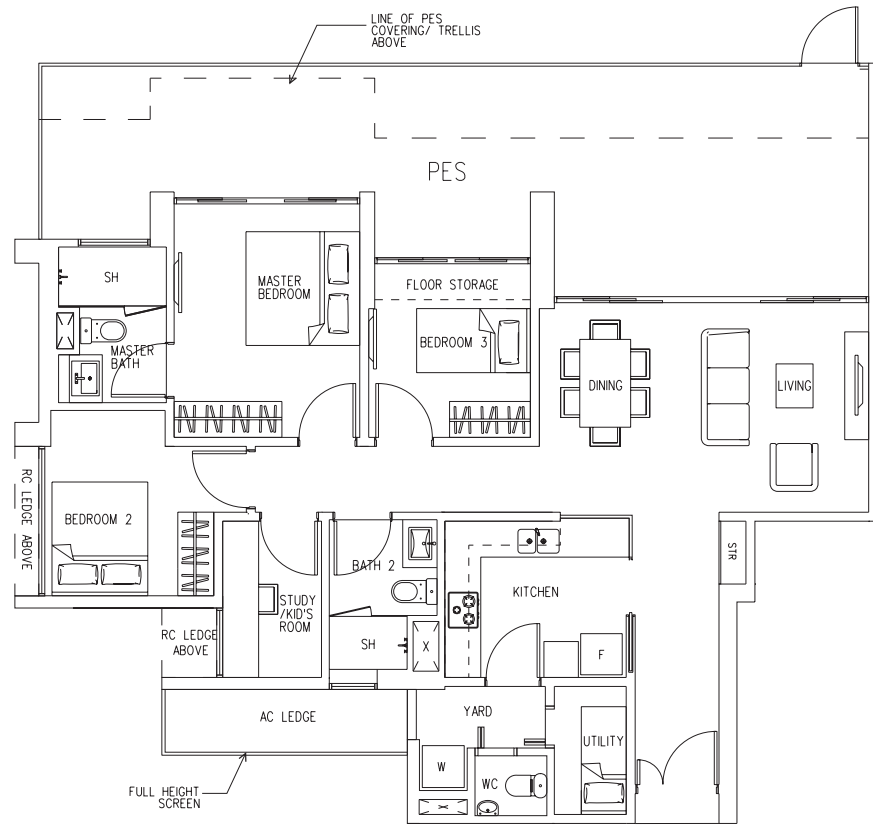
3-BEDROOM + STUDY/KID'S ROOM

Type E2 (PES)

148 sq m (1,593 sq ft)

Block 38

#01-23



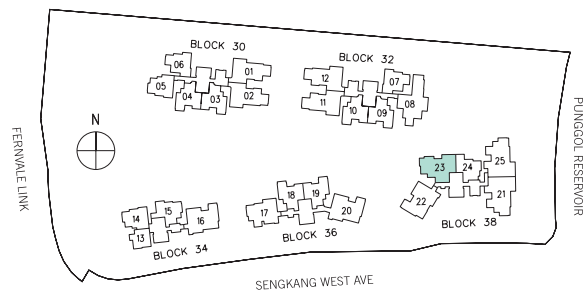
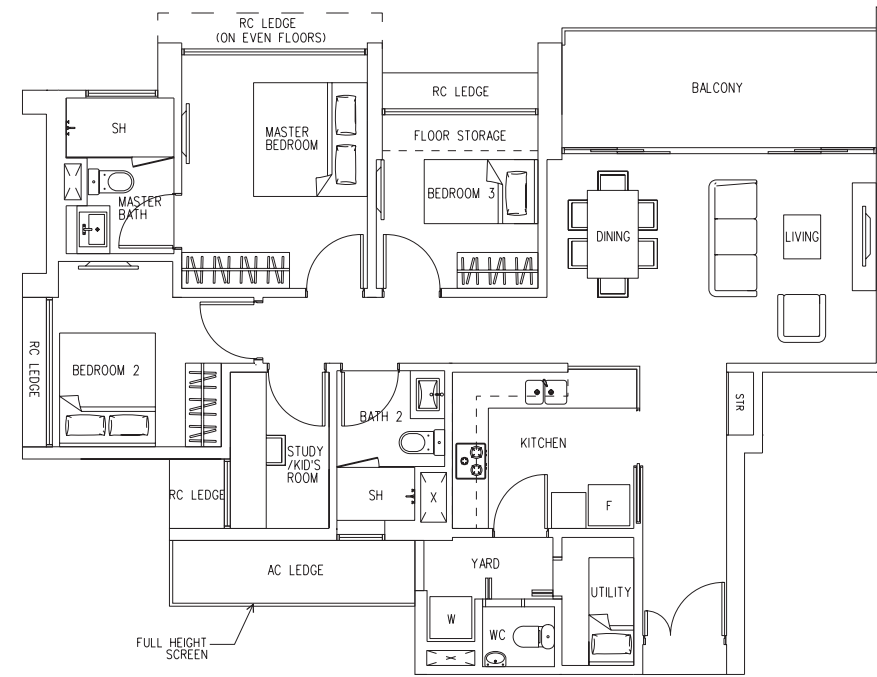
3-BEDROOM + STUDY/KID'S ROOM

Type E2

114 sq m (1,227 sq ft)

Block 38

#02-23 to #21-23



3-BEDROOM + STUDY/KID'S ROOM

Type E3 (PES)

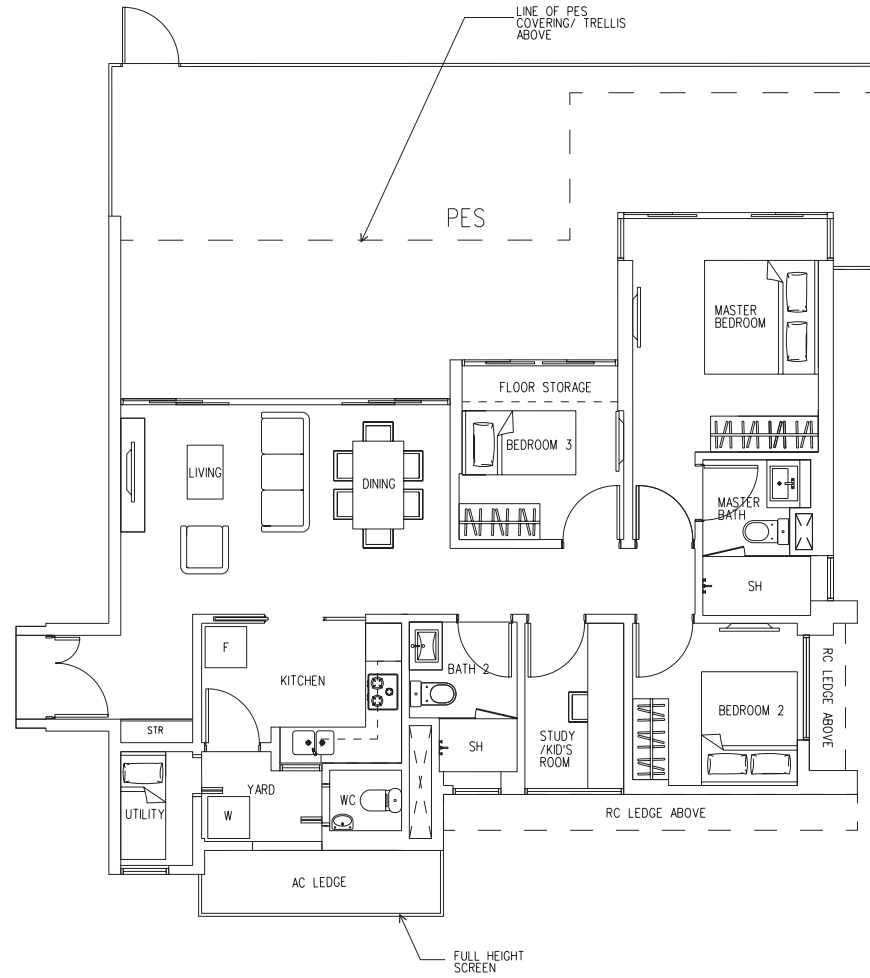
155 sq m (1,668 sq ft)

Block 34

#01-16

Block 36

#01-20



3-BEDROOM + STUDY/KID'S ROOM

Type E3

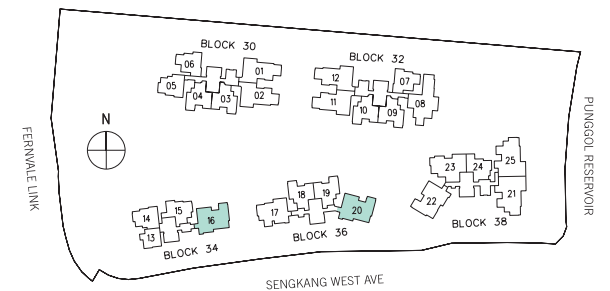
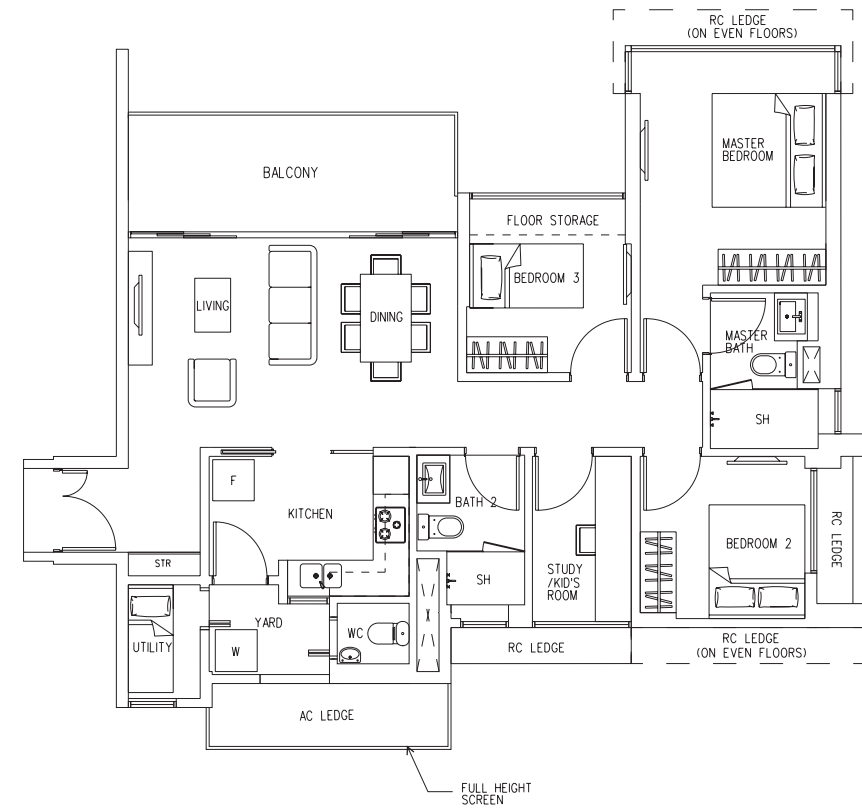
111 sq m (1,195 sq ft)

Block 34

#02-16 to #19-16

Block 36

#02-20 to #19-20



3-BEDROOM APARTMENT

Type D1 (PES)

152 sq m (1,636 sq ft)

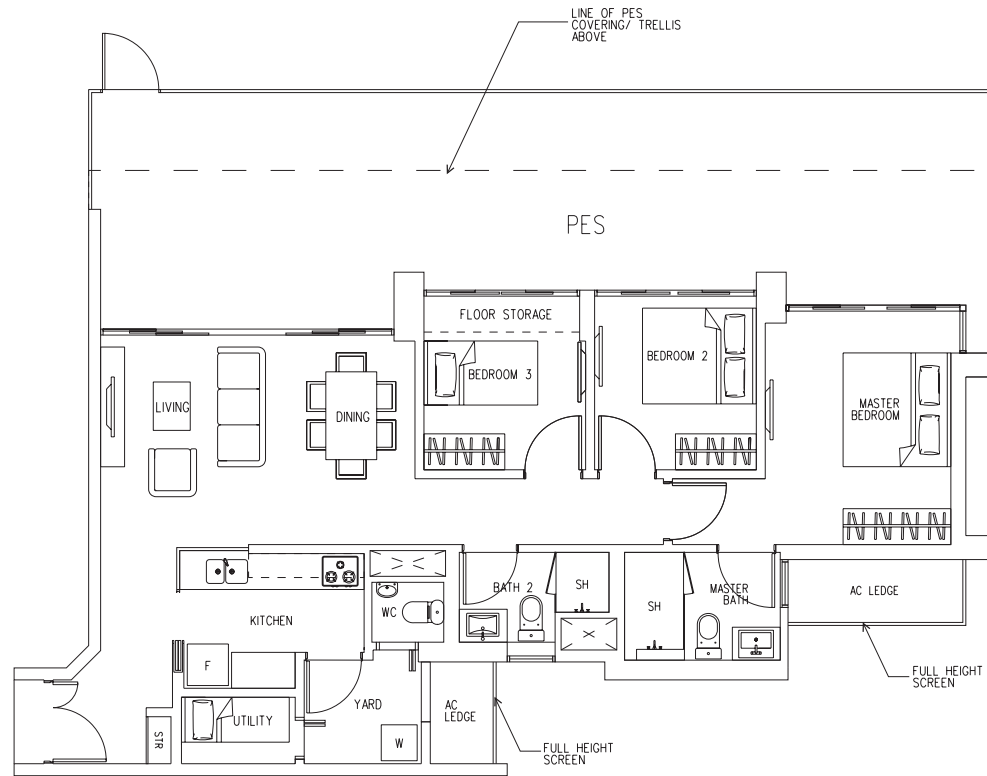
Block 30

#01-01
#01-02*

Block 32

#01-11
#01-12*

*mirror image



3-BEDROOM APARTMENT

Type D1

105 sq m (1,130 sq ft)

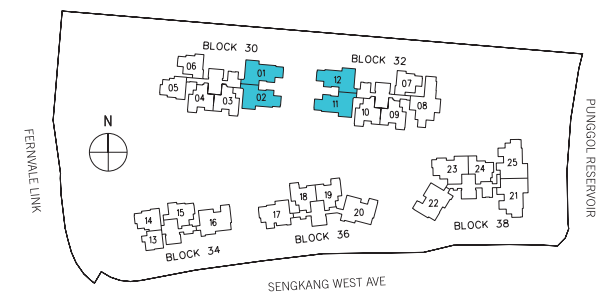
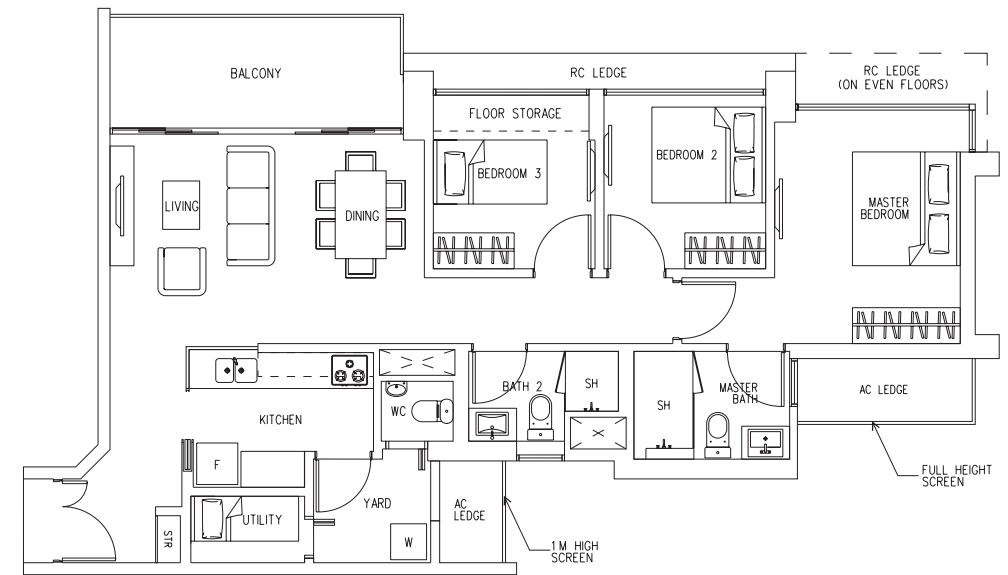
Block 30

#02-01 to #23-01
#02-02* to #23-02*

Block 32

#02-11 to #22-11
#02-12* to #22-12*

*mirror image

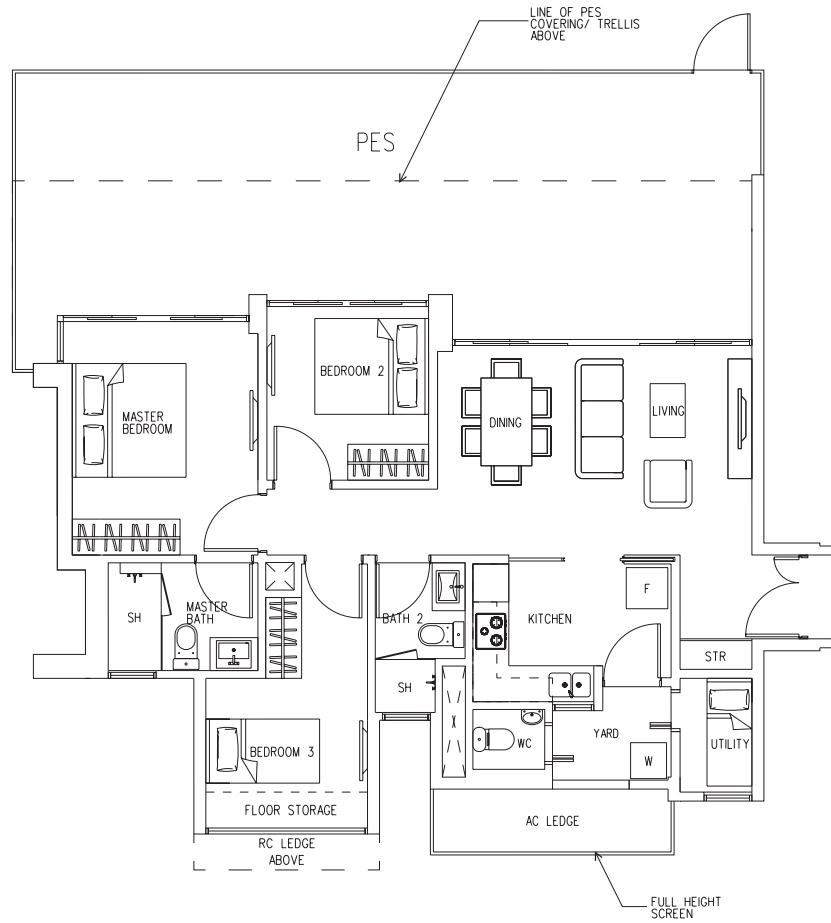


3-BEDROOM APARTMENT

Type D2 (PES)

143 sq m (1,539 sq ft)

Block 36
#01-17

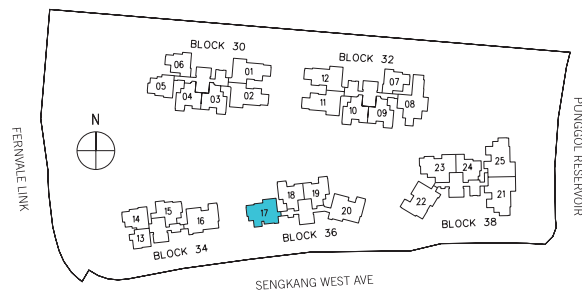
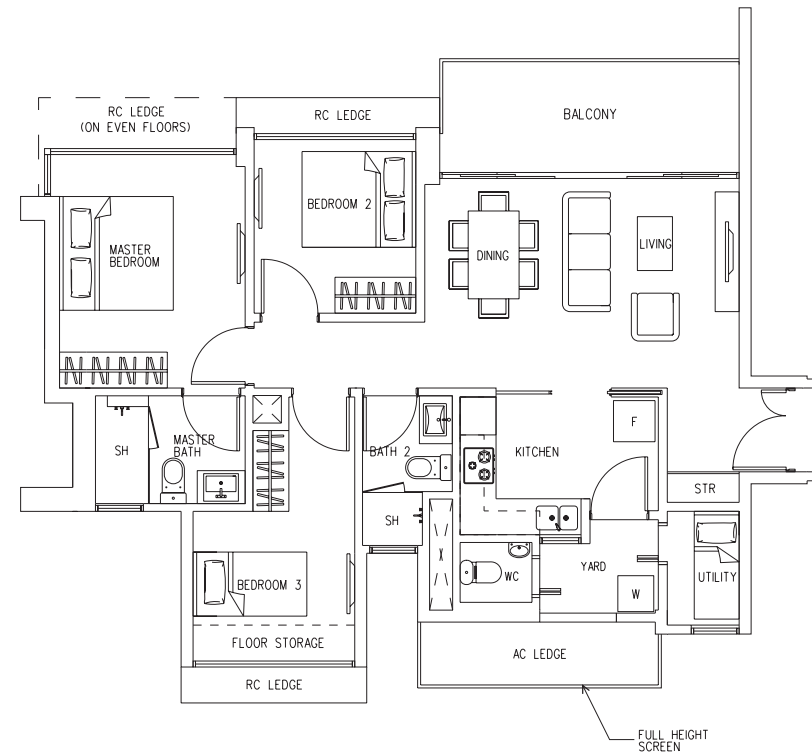


3-BEDROOM APARTMENT

Type D2

100 sq m (1,076 sq ft)

Block 36
#02-17 to #19-17



2-BEDROOM + STUDY/KID'S ROOM

Type C1 (PES)

112 sq m (1,206 sq ft)

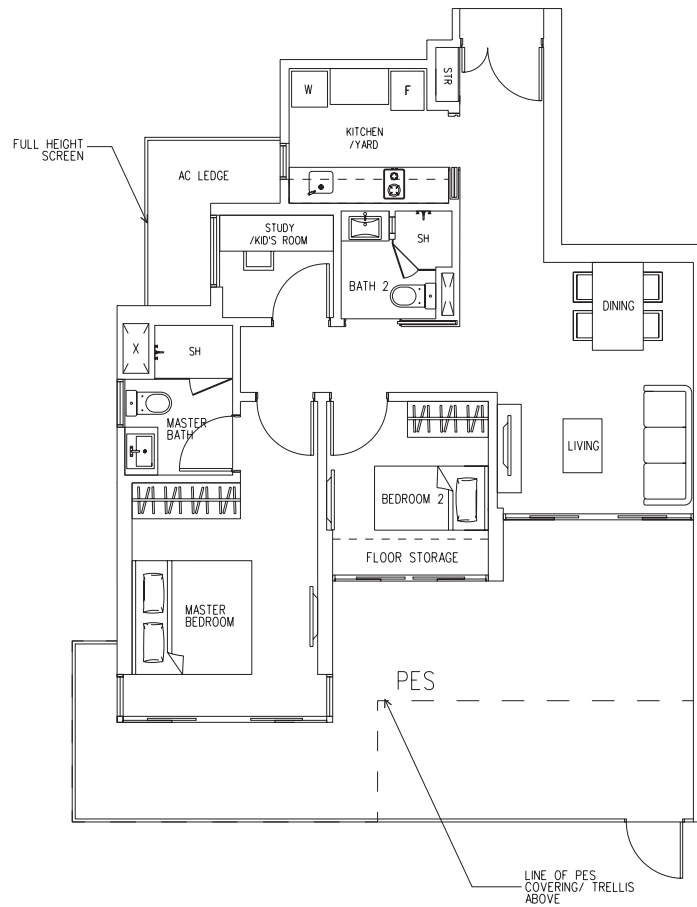
Block 30

#01-04
#01-03*

Block 32

#01-10
#01-09*

*mirror image



2-BEDROOM + STUDY/KID'S ROOM

Type C1

82 sq m (883 sq ft)

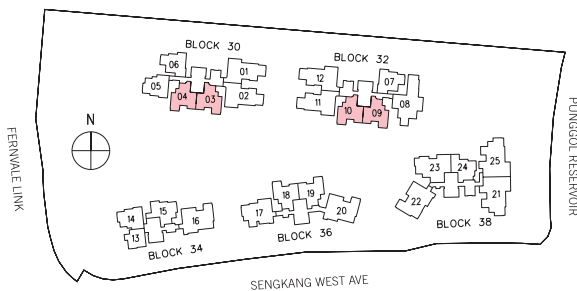
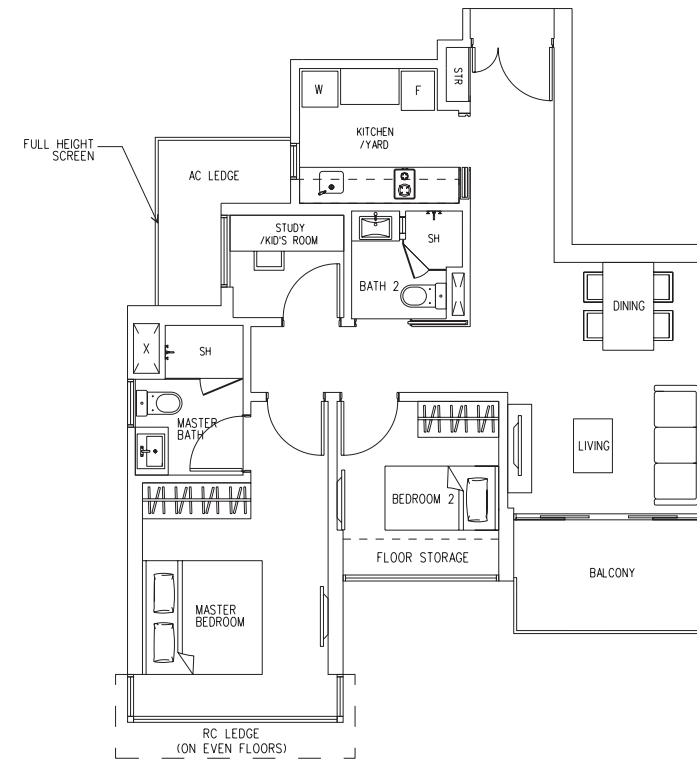
Block 30

#02-04 to #23-04
#02-03* to #23-03*

Block 32

#02-10 to #22-10
#02-09* to #22-09*

*mirror image



2-BEDROOM + STUDY/KID'S ROOM

Type C2 (PES)

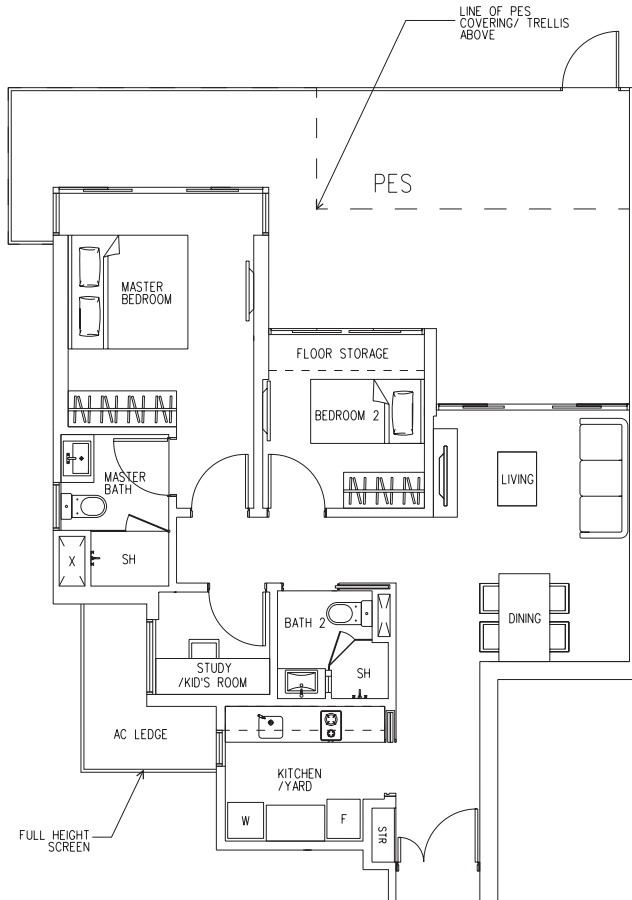
112 sq m (1,206 sq ft)

Block 36

#01-18

#01-19*

*mirror image



2-BEDROOM + STUDY/KID'S ROOM

Type C2

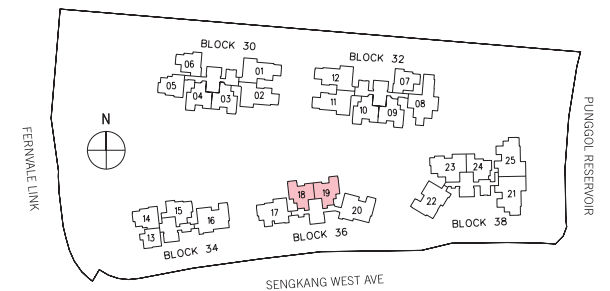
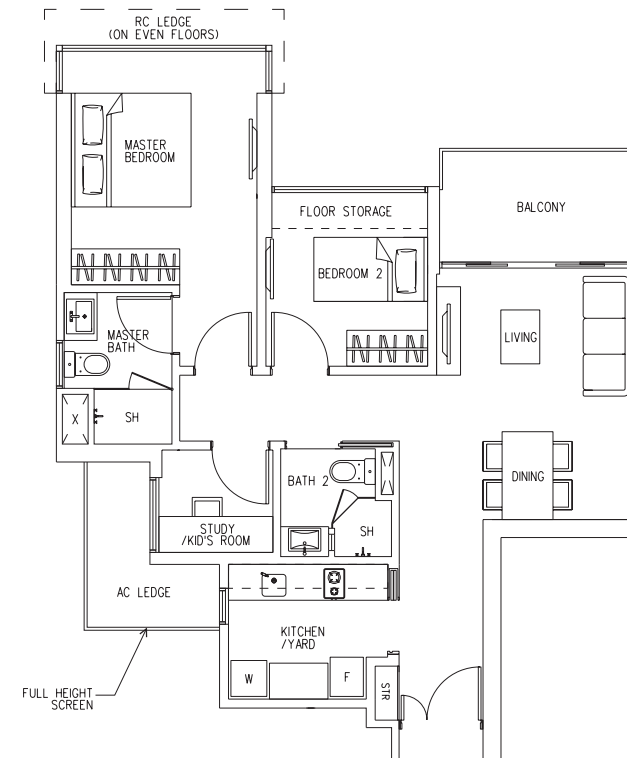
82 sq m (883 sq ft)

Block 36

#02-18 to #19-18

#02-19* to #19-19*

*mirror image



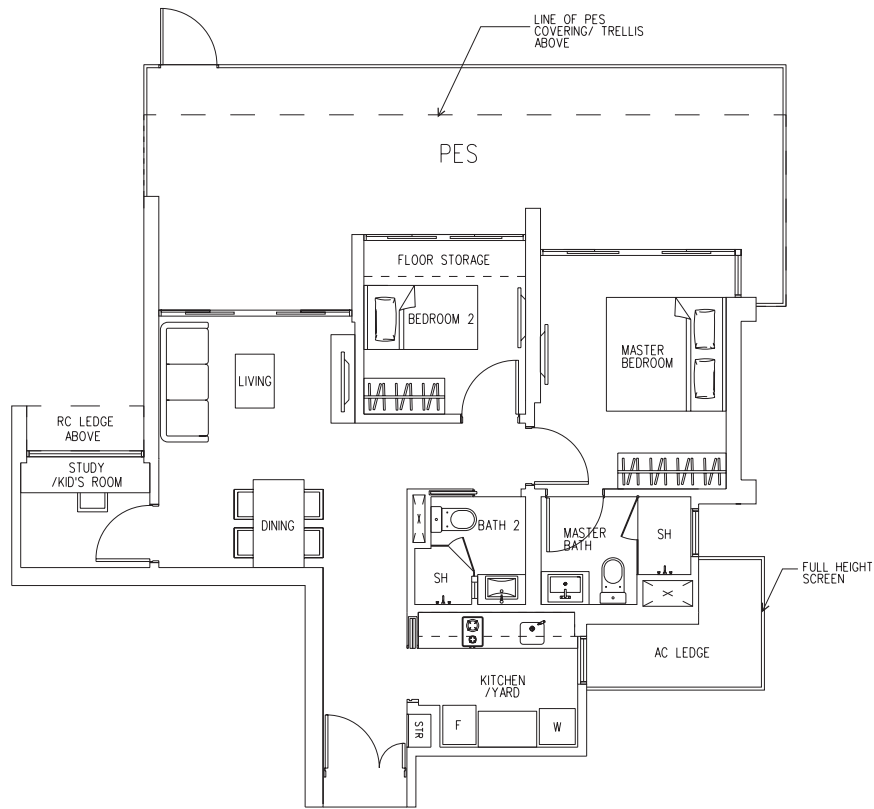
2-BEDROOM + STUDY/KID'S ROOM

Type C3 (PES)

109 sq m (1,173 sq ft)

Block 34

#01-15



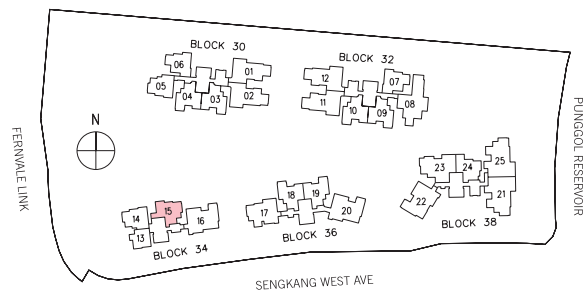
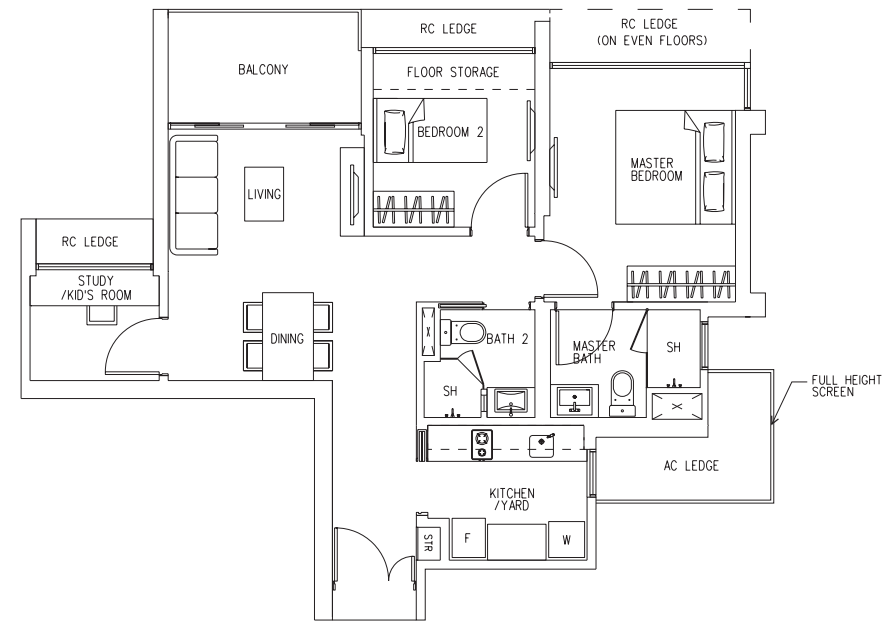
2-BEDROOM + STUDY/KID'S ROOM

Type C3

79 sq m (850 sq ft)

Block 34

#02-15 to #19-15



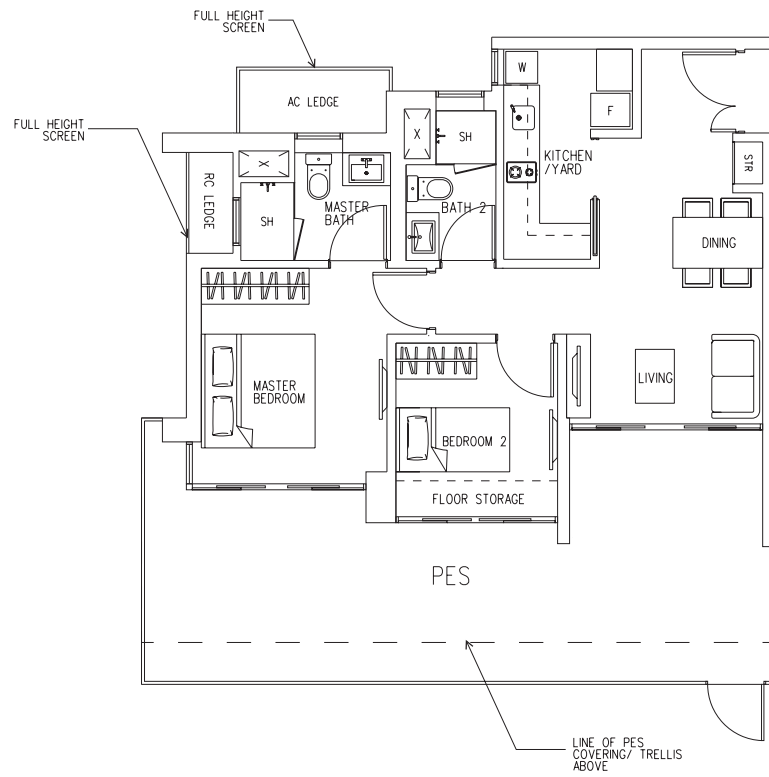
2-BEDROOM APARTMENT

Type B1 (PES)

99 sq m (1,066 sq ft)

Block 30

#01-05



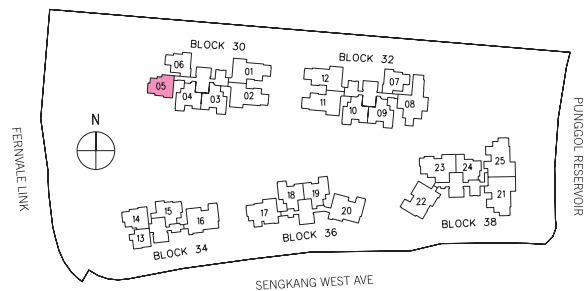
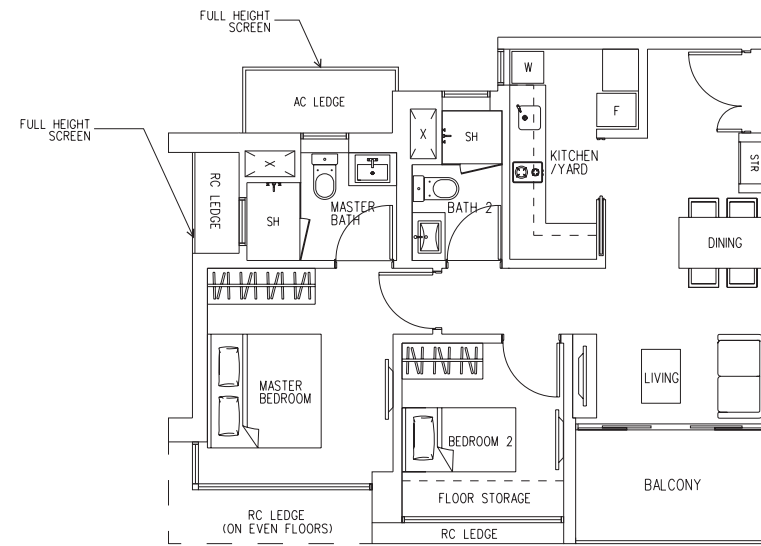
2-BEDROOM APARTMENT

Type B1

69 sq m (743 sq ft)

Block 30

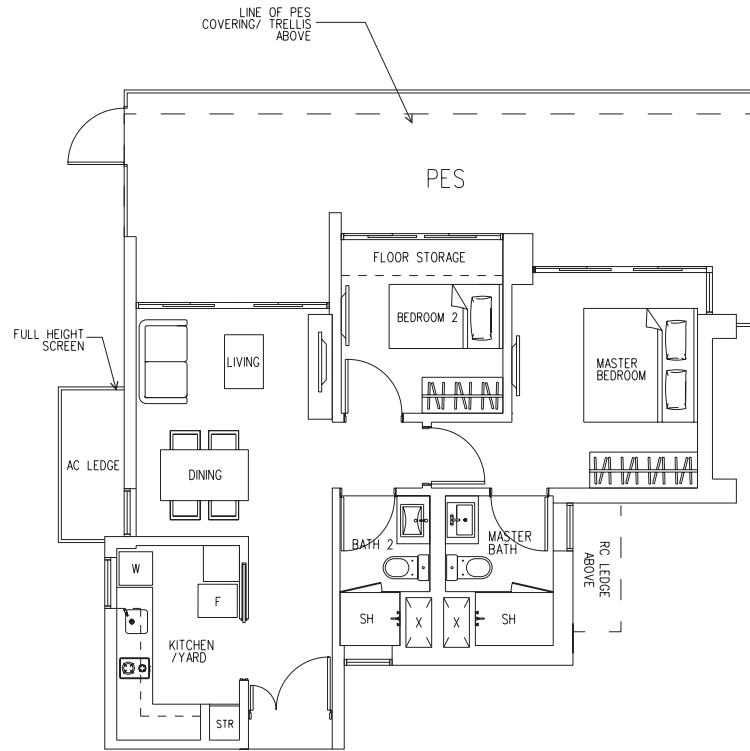
#02-05 to #23-05



2-BEDROOM APARTMENT

Type B2 (PES)
95 sq m (1,023 sq ft)

Block 32
#01-07



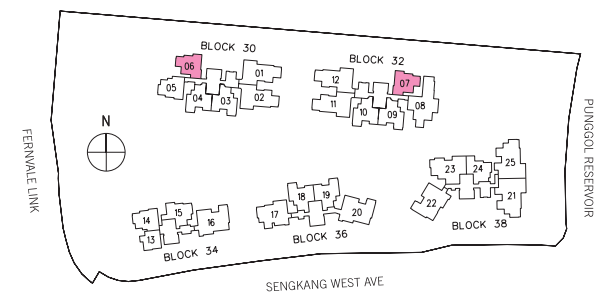
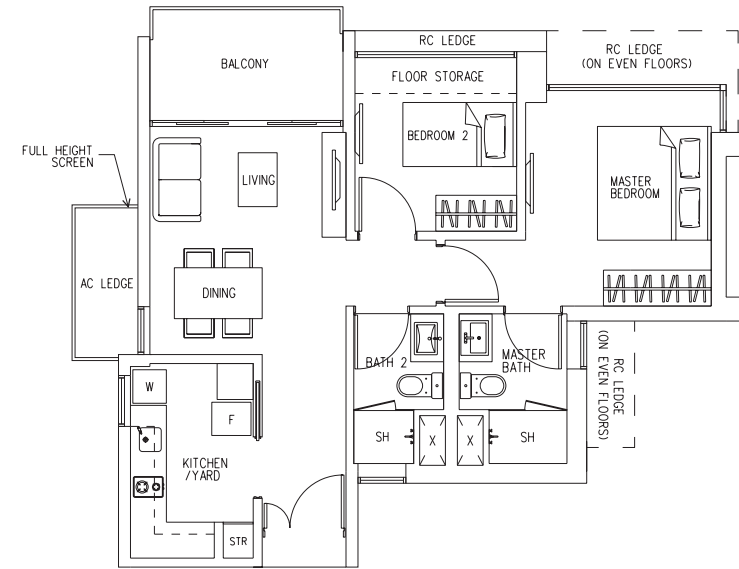
2-BEDROOM APARTMENT

Type B2
70 sq m (753 sq ft)

Block 30
#07-06* to #23-06*

Block 32
#02-07 to #22-07

*mirror image



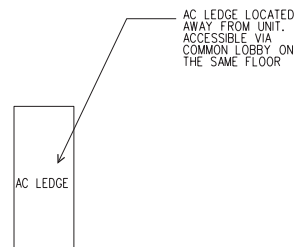
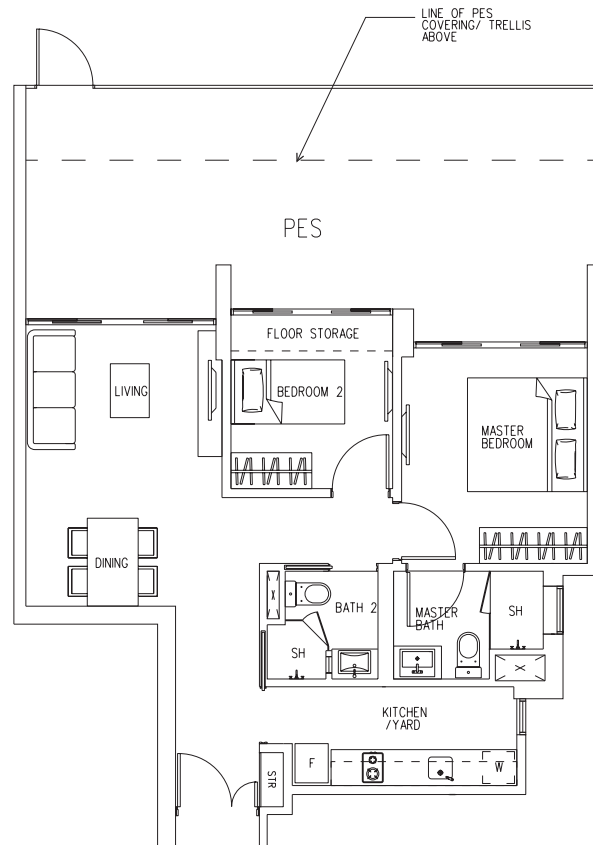
2-BEDROOM APARTMENT

Type B3 (PES)

106 sq m (1,141 sq ft)

Block 38

#01-24



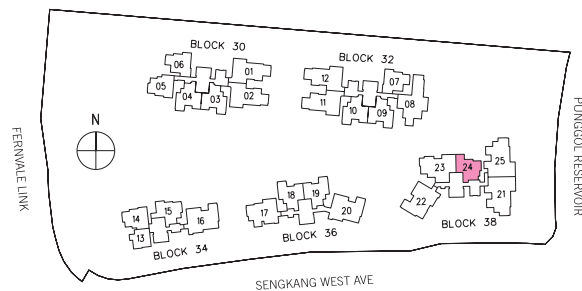
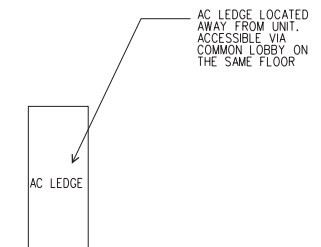
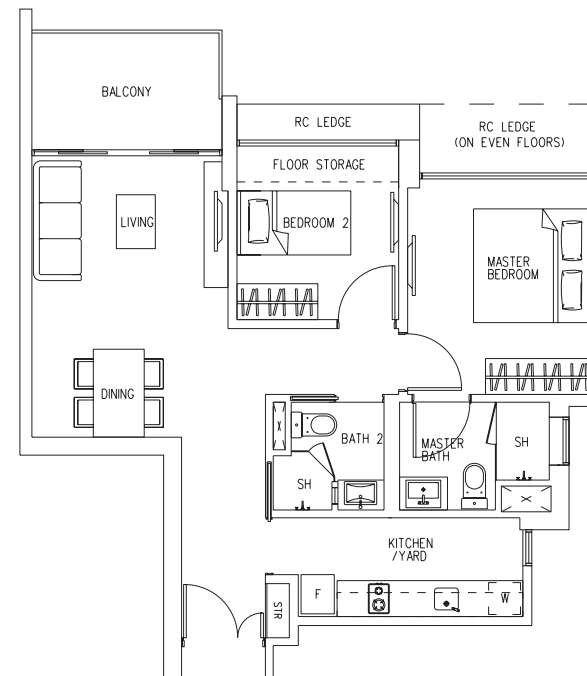
2-BEDROOM APARTMENT

Type B3

74 sq m (797 sq ft)

Block 38

#02-24 to #21-24



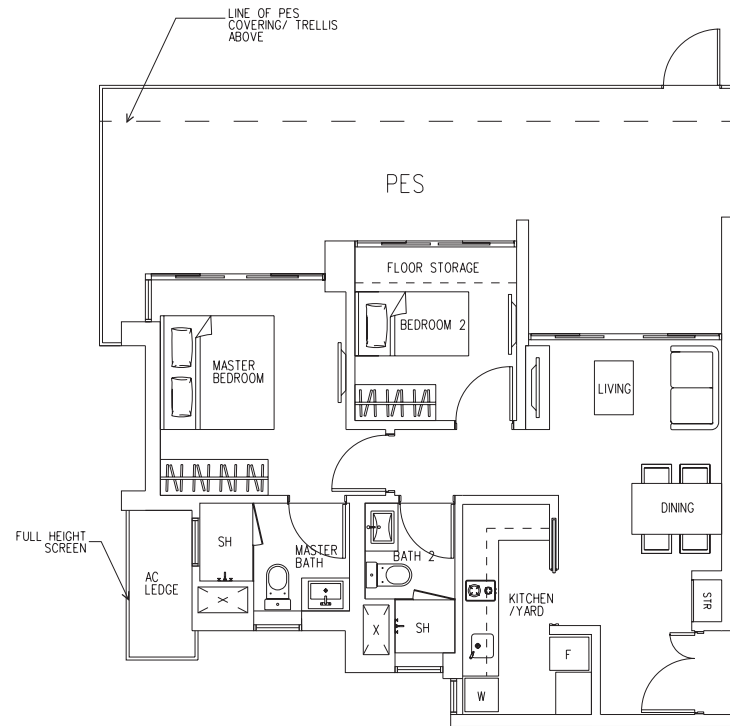
2-BEDROOM APARTMENT

Type B4 (PES)

98 sq m (1,055 sq ft)

Block 34

#01-14



2-BEDROOM APARTMENT

Type B4

69 sq m (743 sq ft)

Block 34

#02-14 to #19-14

