



1-BEDROOM

TYPE A - A(m)

47 SQ.M / 506 SQ.FT
 #02-09 TO #34-09 / #02-15 TO #34-15



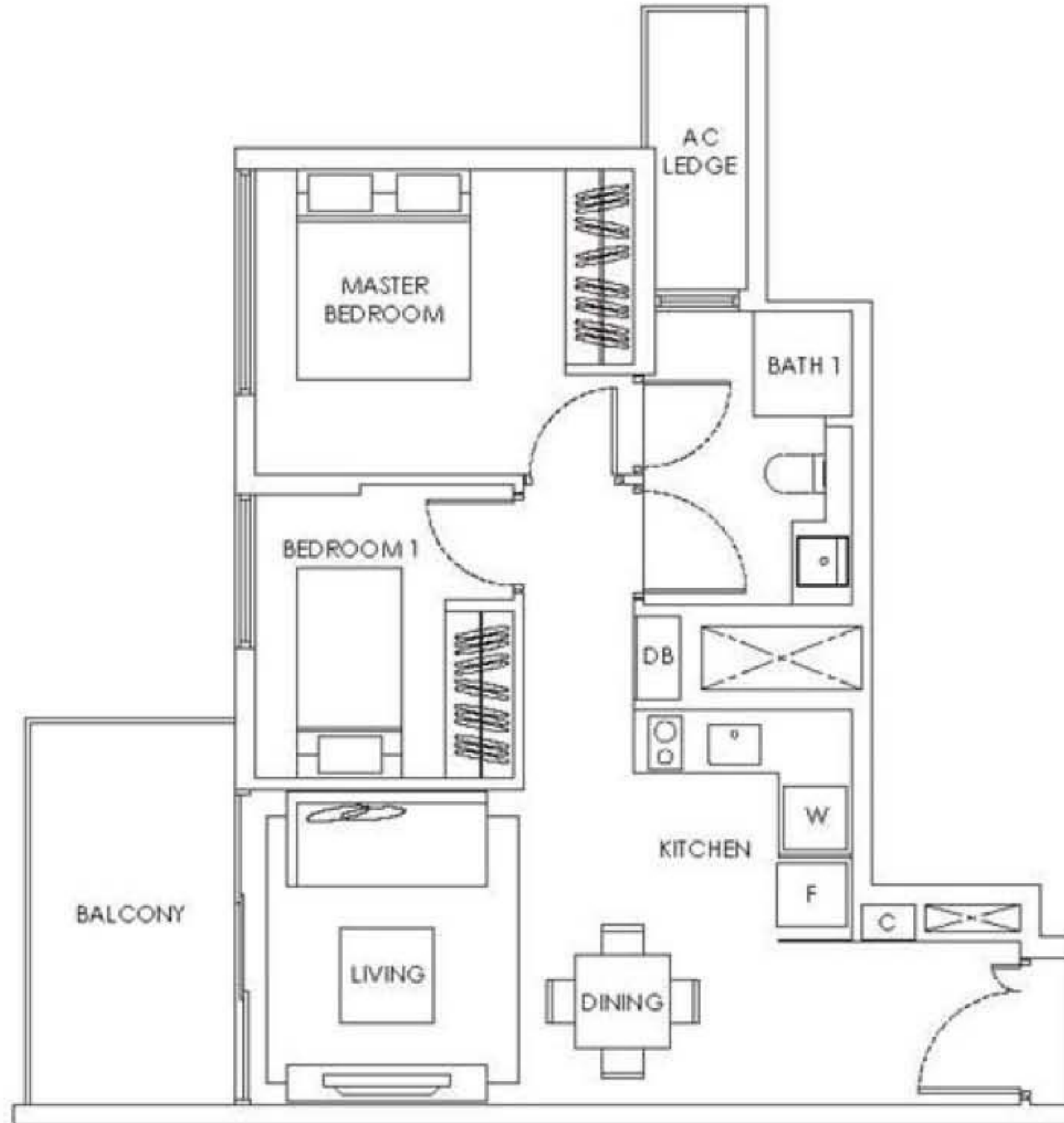
Balconies cannot be enclosed unless with the approved balcony screens. Area includes PES, AC ledge, balcony and roof terrace, if any. Some units are mirror images of the apartment plans shown in the brochure. Please refer to the key plans for orientation. All plans are not drawn to scale and are subject to changes pending approval by relevant authorities. All floor area are approximate measurements only and are subject to final survey.

2-BEDROOM

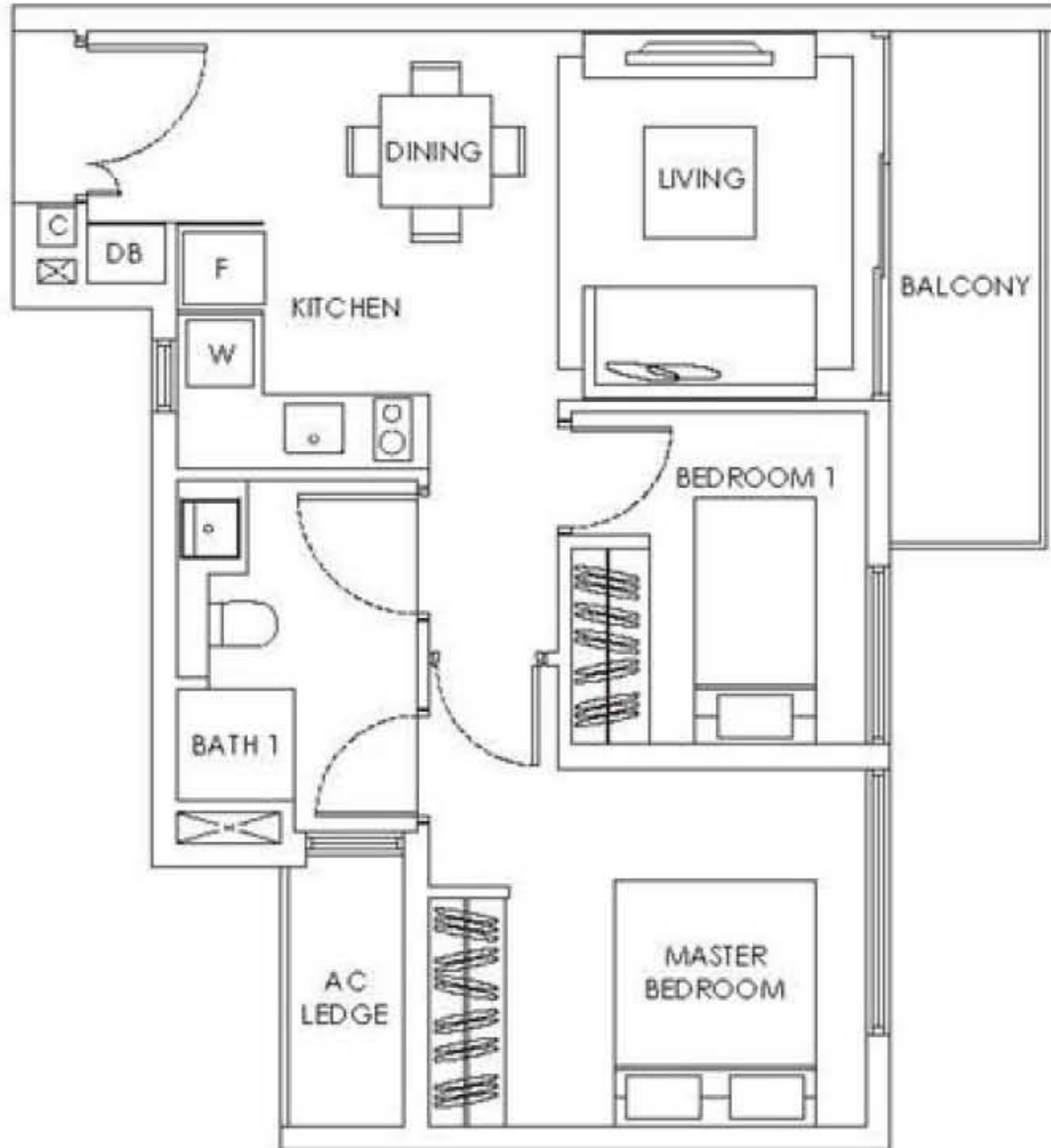


TYPE Bc1 - Bc1(m)

65 SQ.M / 700 SQ.FT
#02-12 TO #34-12 / #02-18 TO #34-18



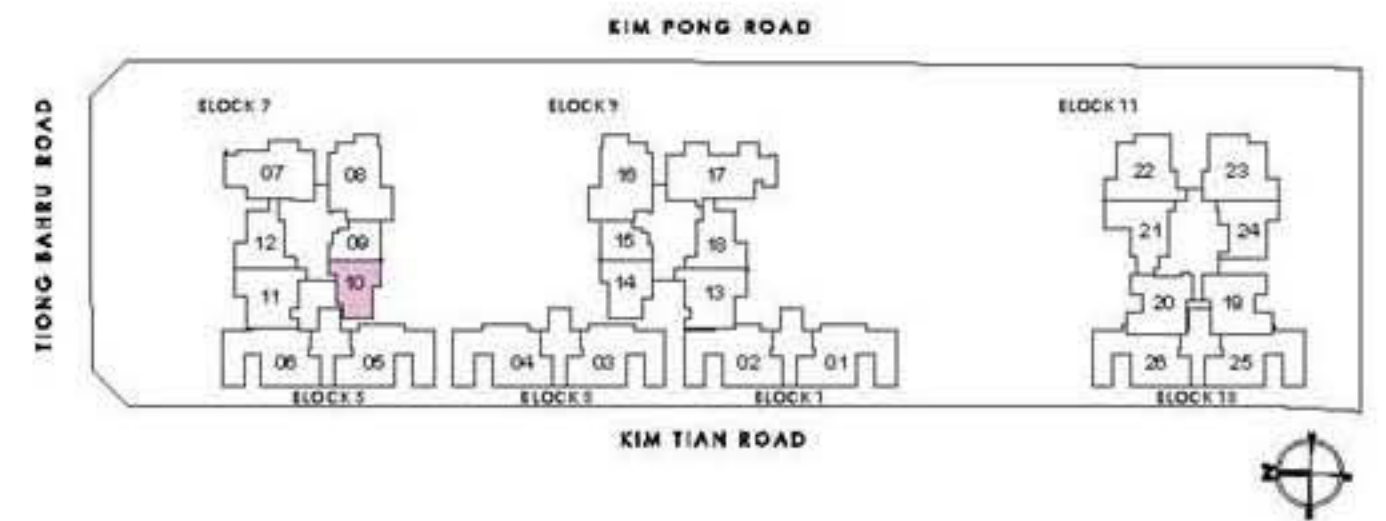
Balconies cannot be enclosed unless with the approved balcony screens. Area includes PES, A/C ledge, balcony and roof terrace, if any. Some units are mirror images of the apartment plans shown in the brochure. Please refer to the key plans for orientation. All plans are not drawn to scale and are subject to changes pending approval by relevant authorities. All floor area are approximate measurements only and are subject to final survey.



2-BEDROOM

TYPE Bc2

59 SQ.M / 635 SQ.FT
#06-10 TO #34-10



Balconies cannot be enclosed unless with the approved balcony screens. Area includes PES, A/C ledge, balcony and roof terrace, if any. Some units are mirror images of the apartment plans shown in the brochure. Please refer to the key plans for orientation. All plans are not drawn to scale and are subject to changes pending approval by relevant authorities. All floor area are approximate measurements only and are subject to final survey.



3-BEDROOM

TYPE Cc1 - Cc1(m)

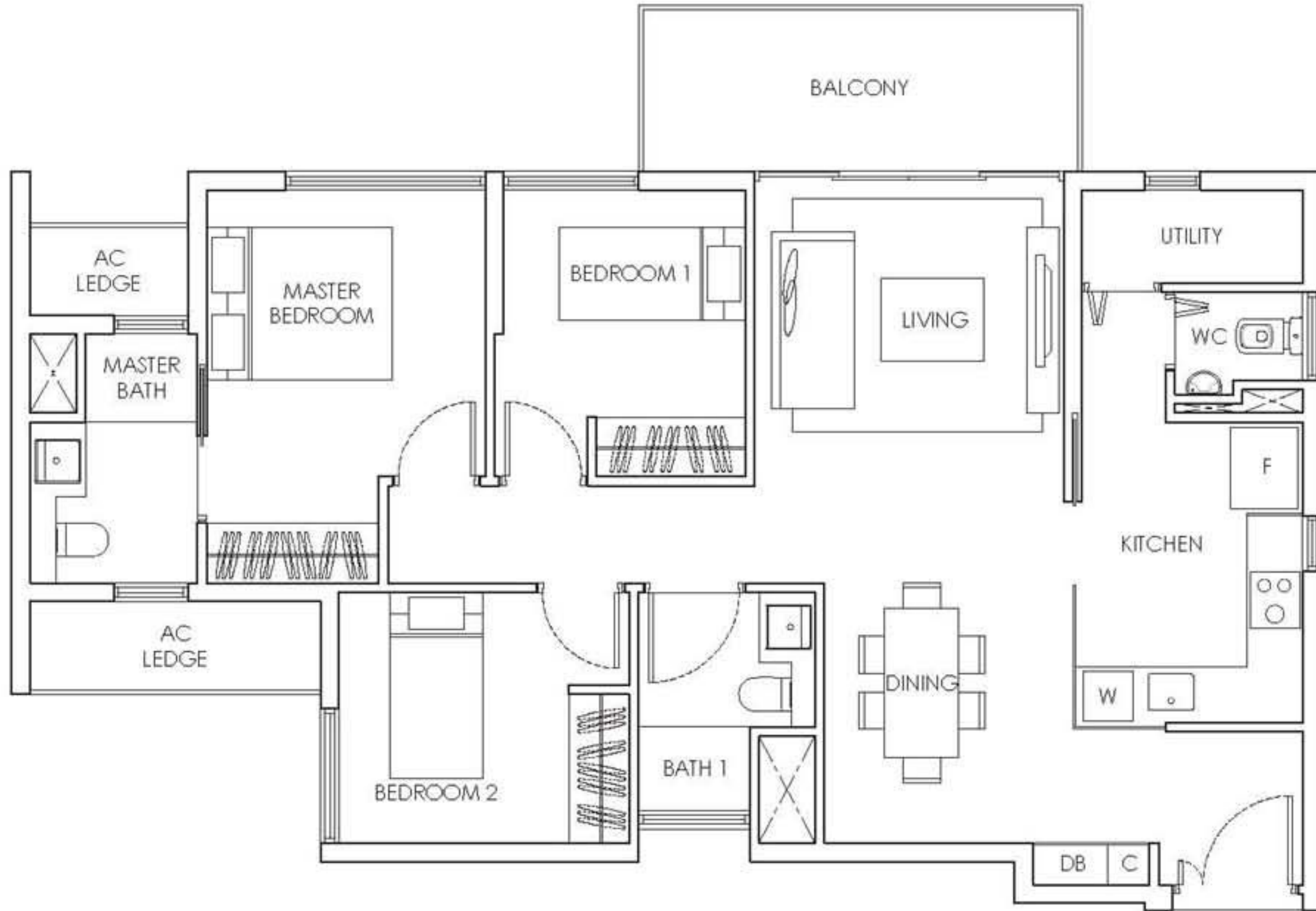
85 SQ.M / 915 SQ.FT
 #06-11 TO #34-11 / #06-13 TO #34-13



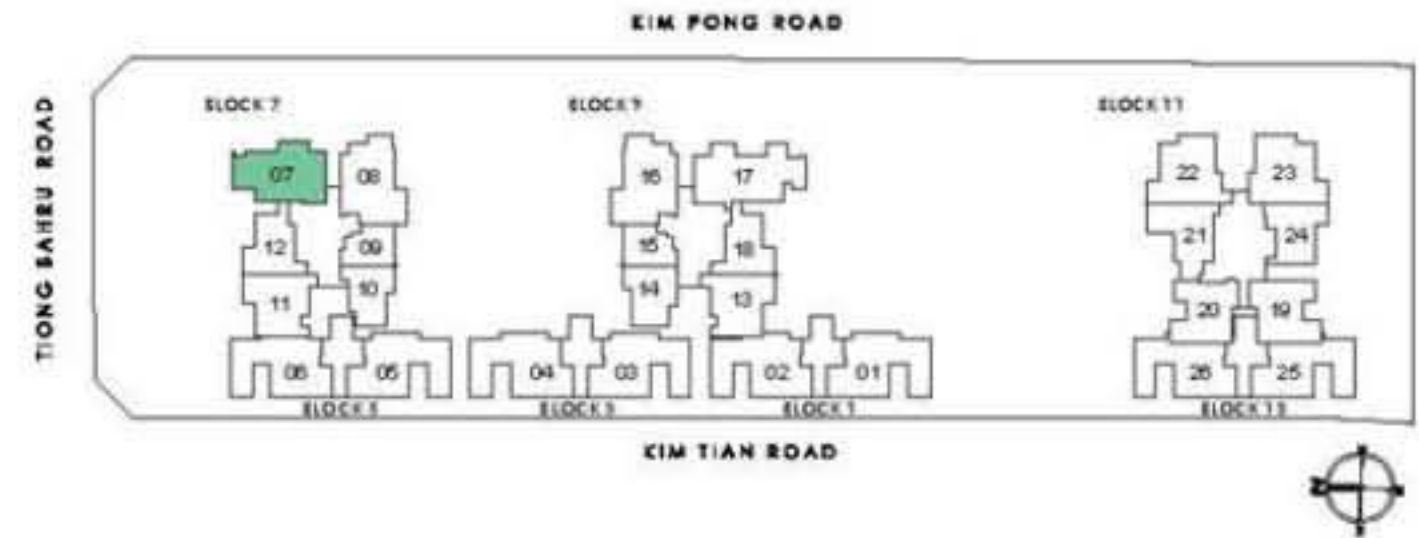
Balconies cannot be enclosed unless with the approved balcony screens. Area includes PES, A/C ledge, balcony and roof terrace, if any. Some units are mirror images of the apartment plans shown in the brochure. Please refer to the key plans for orientation. All plans are not drawn to scale and are subject to changes pending approval by relevant authorities. All floor area are approximate measurements only and are subject to final survey.

3-BEDROOM DELUXE

TYPE C1



103 SQ.M / 1109 SQ.FT
#02-07 TO #34-07



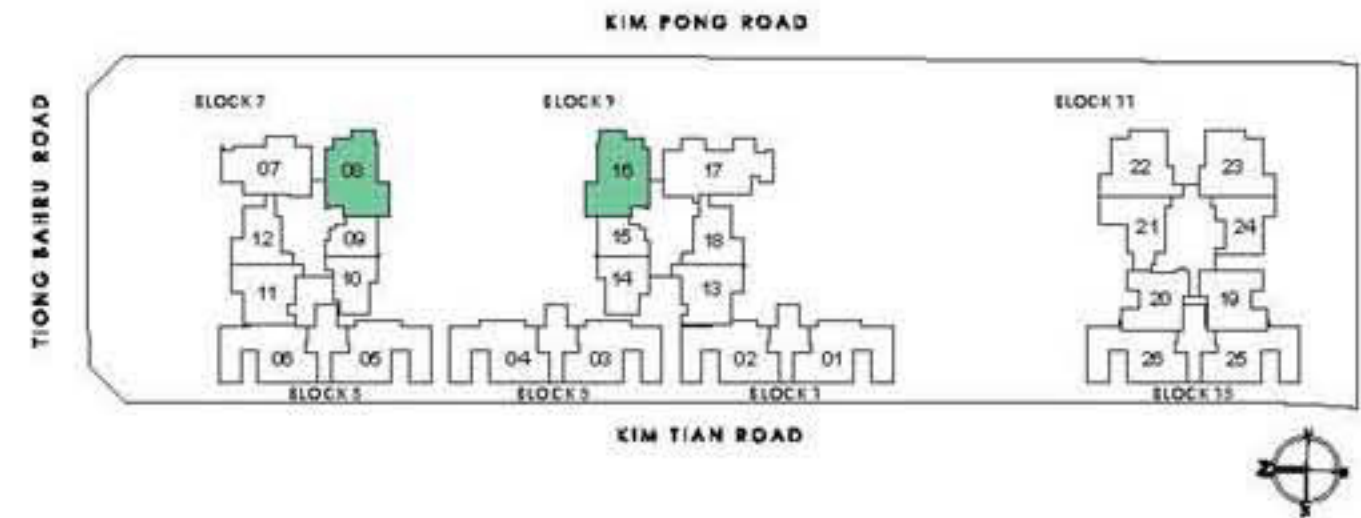
Balconies cannot be enclosed unless with the approved balcony screens. Area includes PES, AC ledge, balcony and roof terrace, if any. Some units are mirror images of the apartment plans shown in the brochure. Please refer to the key plans for orientation. All plans are not drawn to scale and are subject to changes pending approval by relevant authorities. All floor area are approximate measurements only and are subject to final survey.



3-BEDROOM DELUXE

TYPE C2 - C2(m)

107 SQ.M / 1152 SQ.FT
 #02-08 TO #34-08 / #02-16 TO #34-16



Balconies cannot be enclosed unless with the approved balcony screens. Area includes PES, A/C ledge, balcony and roof terrace, if any. Some units are mirror images of the apartment plans shown in the brochure. Please refer to the key plans for orientation. All plans are not drawn to scale and are subject to changes pending approval by relevant authorities. All floor area are approximate measurements only and are subject to final survey.

1-BEDROOM

TYPE A - A(m)

47 SQ.M / 506 SQ.FT
#02-09 TO #34-09 / #02-15 TO #34-15



Balconies cannot be enclosed unless with the approved balcony screens. Area includes PES, A/C ledge, balcony and roof terrace, if any. Some units are mirror images of the apartment plans shown in the brochure. Please refer to the key plans for orientation. All plans are not drawn to scale and are subject to changes pending approval by relevant authorities. All floor area are approximate measurements only and are subject to final survey.

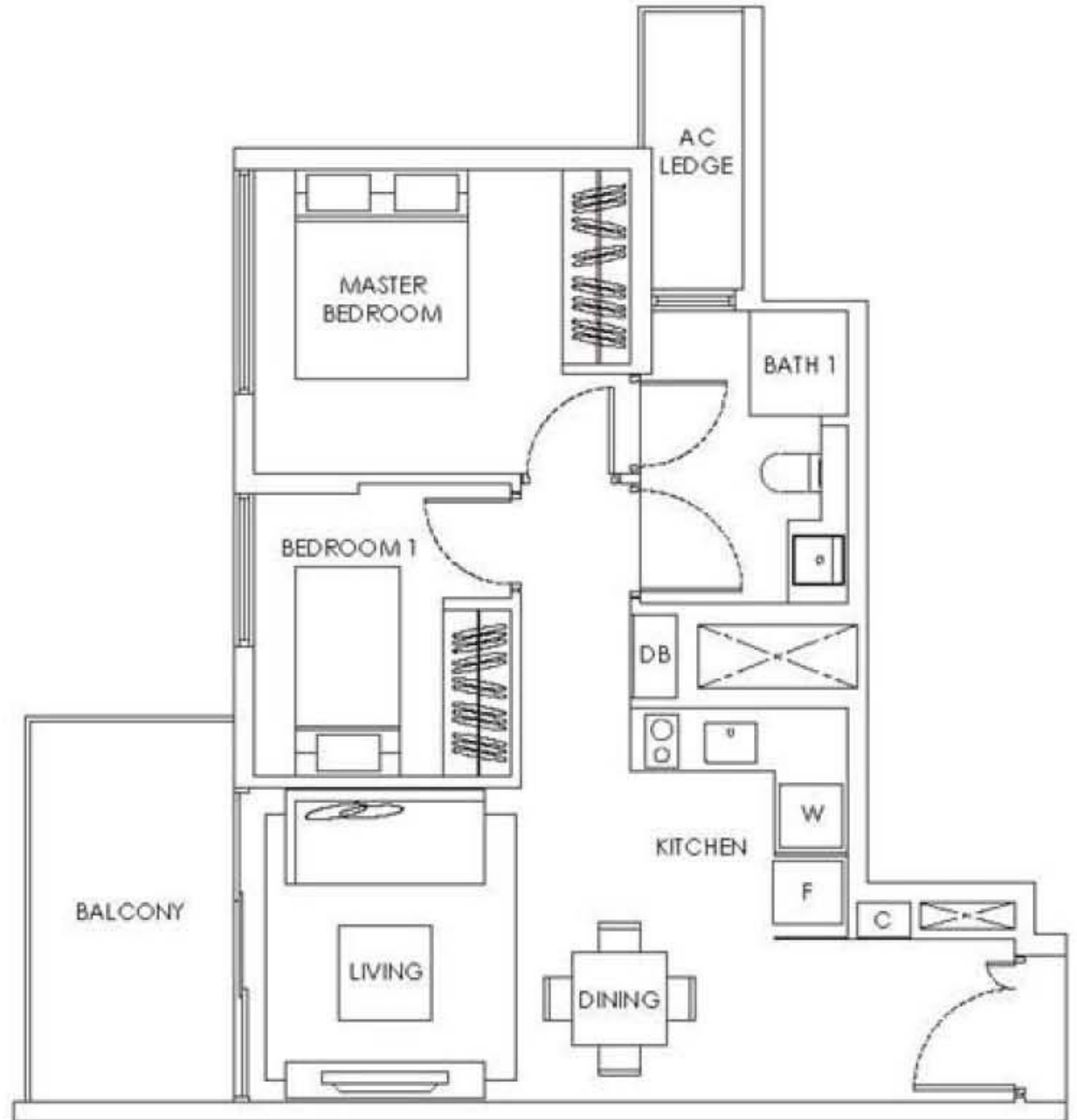
2-BEDROOM

TYPE Bc1 - Bc1(m)

65 SQ.M / 700 SQ.FT
#02-12 TO #34-12 / #02-18 TO #34-18



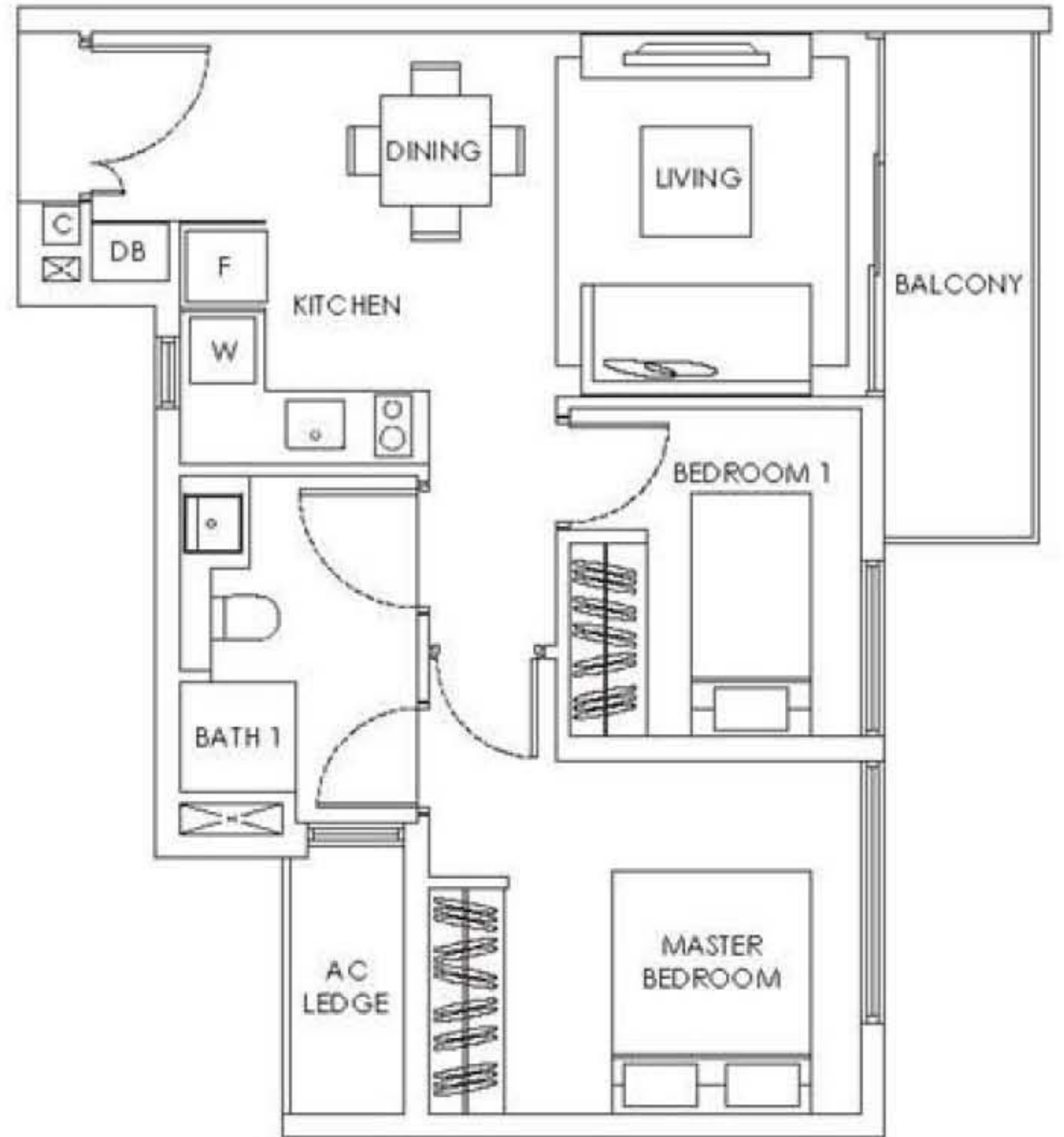
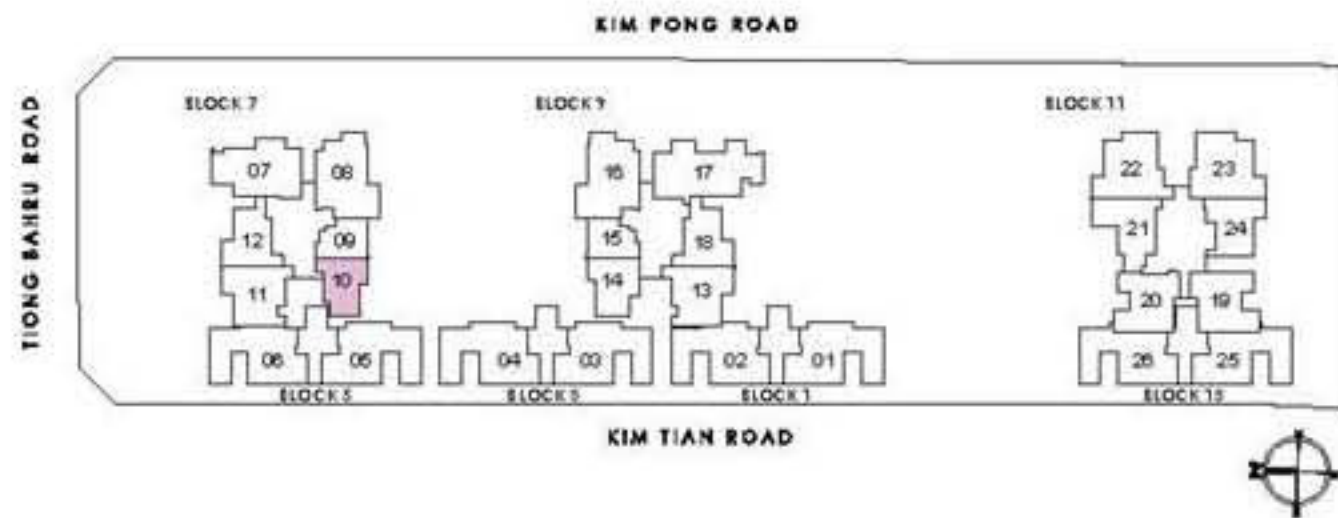
Balconies cannot be enclosed unless with the approved balcony screens. Area includes PES, AC ledge, balcony and roof terrace, if any. Some units are mirror images of the apartment plans shown in the brochure. Please refer to the key plans for orientation. All plans are not drawn to scale and are subject to changes pending approval by relevant authorities. All floor area are approximate measurements only and are subject to final survey.



2-BEDROOM

TYPE Bc2

59 SQ.M / 635 SQ.FT
#06-10 TO #34-10

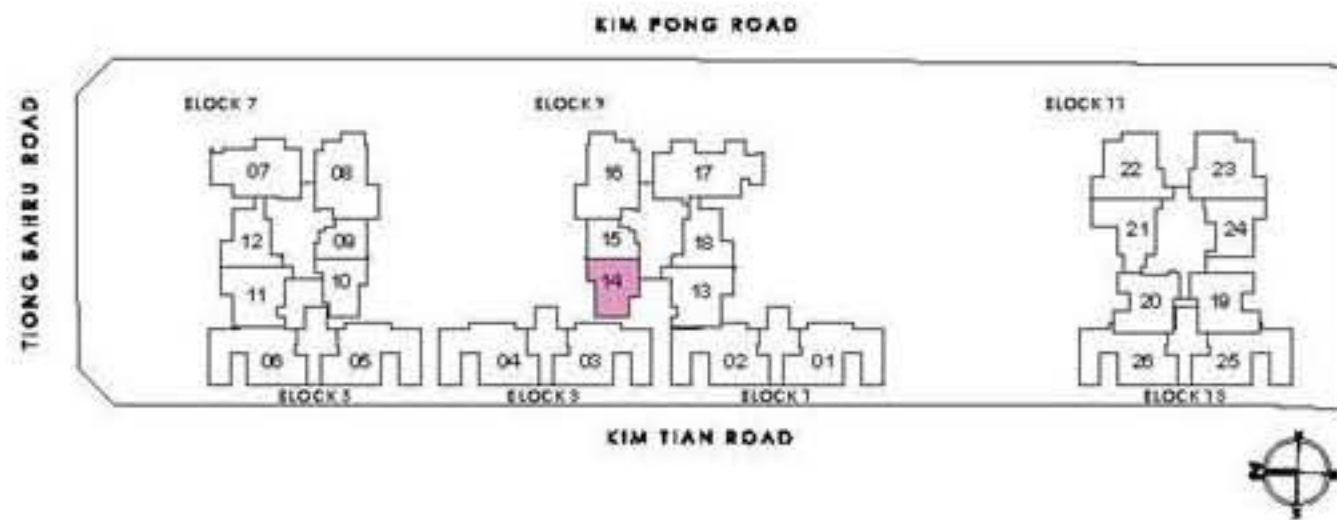


Balconies cannot be enclosed unless with the approved balcony screens. Area includes PES, A/C ledge, balcony and roof terrace, if any. Some units are mirror images of the apartment plans shown in the brochure. Please refer to the key plans for orientation. All plans are not drawn to scale and are subject to changes pending approval by relevant authorities. All floor area are approximate measurements only and are subject to final survey.

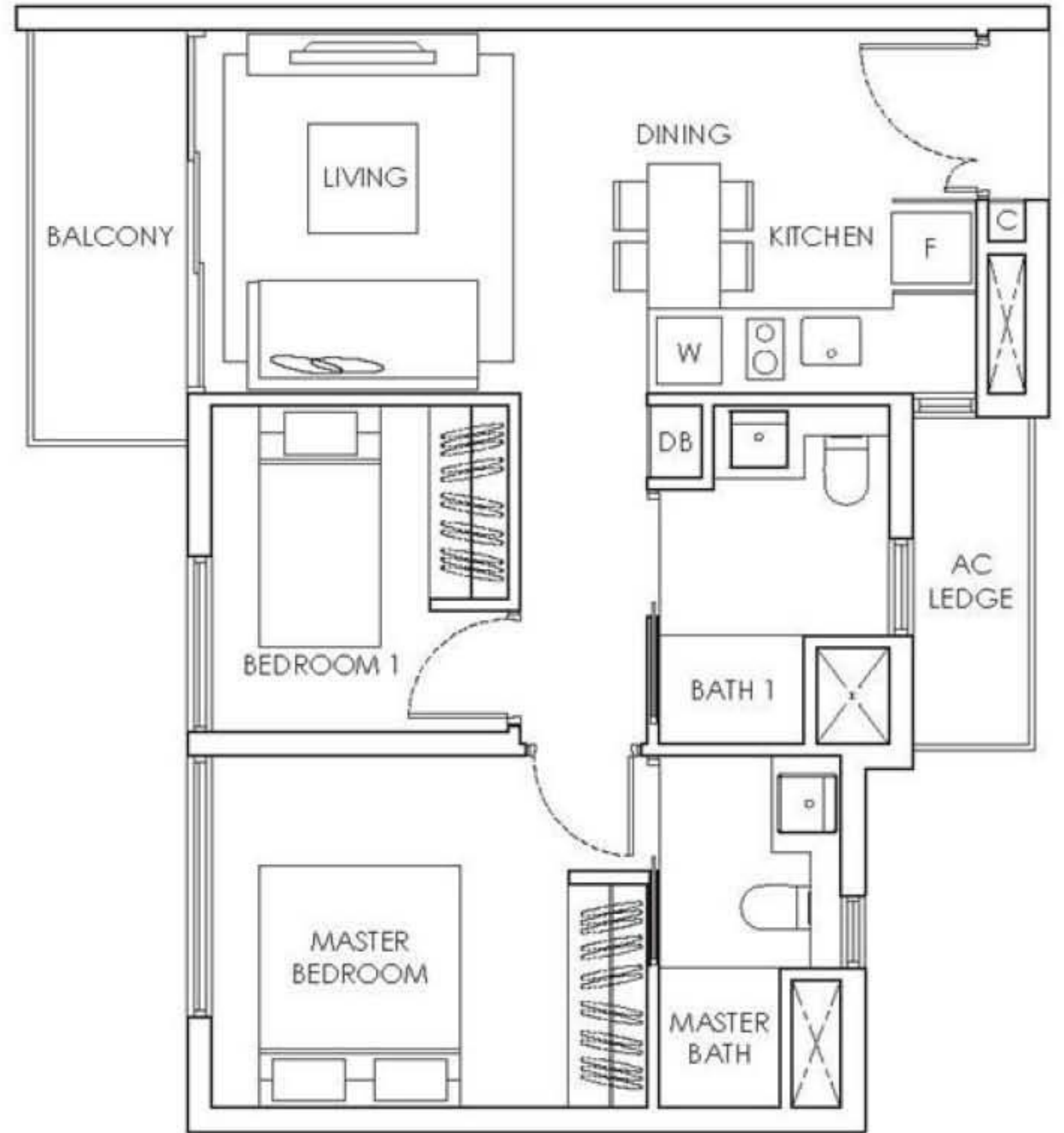
2-BEDROOM DELUXE

TYPE B1

62 SQ.M / 667 SQ.FT
#06-14 TO #34-14



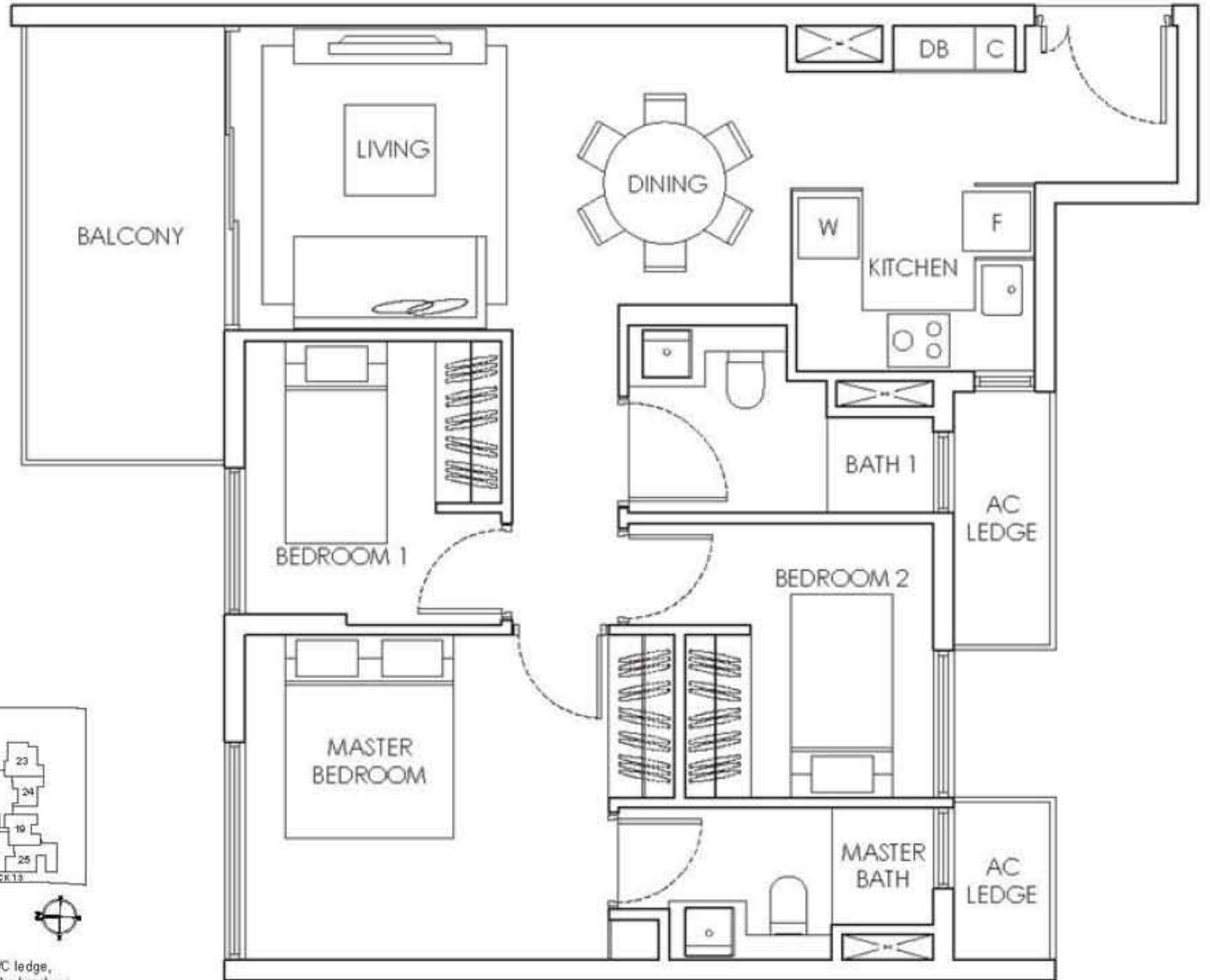
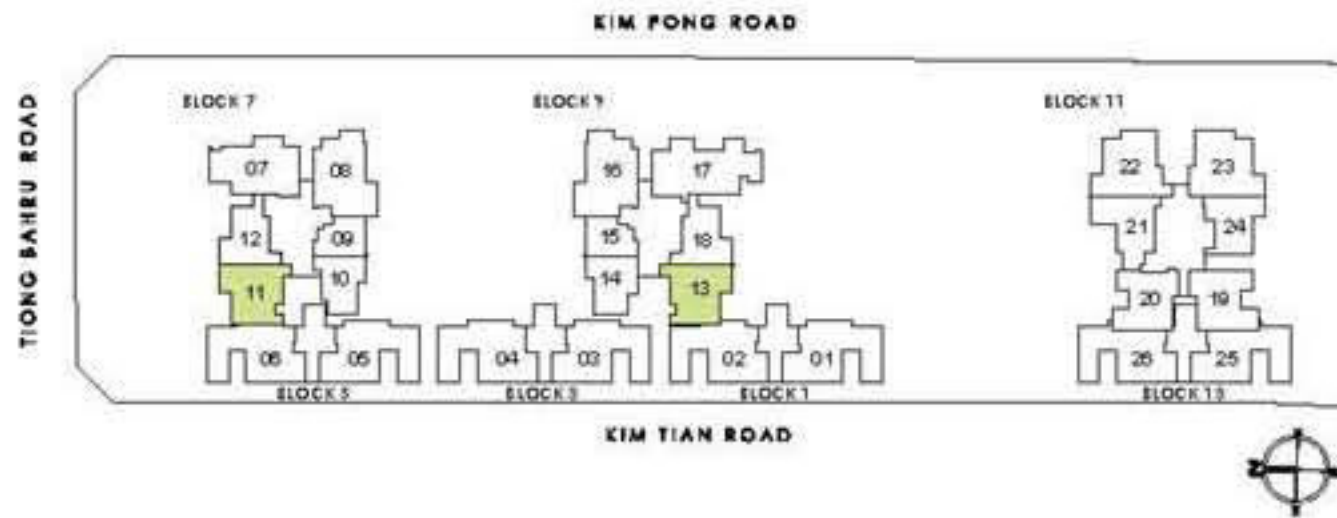
Balconies cannot be enclosed unless with the approved balcony screens. Area includes PES, AC ledge, balcony and roof terrace, if any. Some units are mirror images of the apartment plans shown in the brochure. Please refer to the key plans for orientation. All plans are not drawn to scale and are subject to changes pending approval by relevant authorities. All floor area are approximate measurements only and are subject to final survey.



3-BEDROOM

TYPE Cc1 - Cc1(m)

85 SQ.M / 915 SQ.FT
#06-11 TO #34-11 / #06-13 TO #34-13

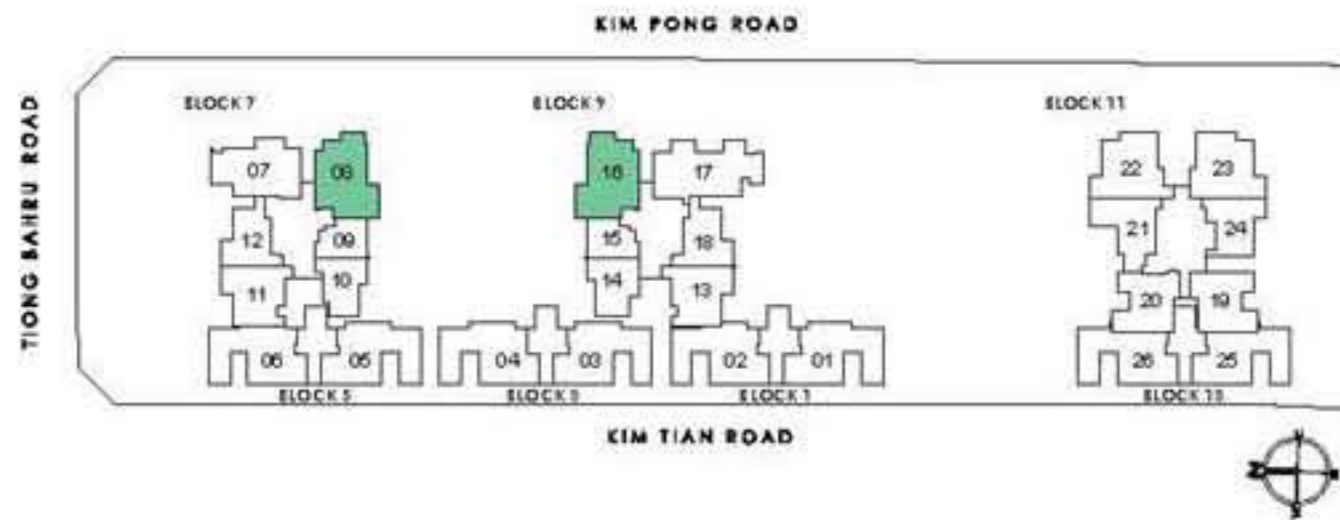


Balconies cannot be enclosed unless with the approved balcony screens. Area includes PES, A/C ledge, balcony and roof terrace, if any. Some units are mirror images of the apartment plans shown in the brochure. Please refer to the key plans for orientation. All plans are not drawn to scale and are subject to changes pending approval by relevant authorities. All floor area are approximate measurements only and are subject to final survey.

3-BEDROOM DELUXE

TYPE C2 - C2(m)

107 SQ.M / 1152 SQ.FT
#02-08 TO #34-08 / #02-16 TO #34-16



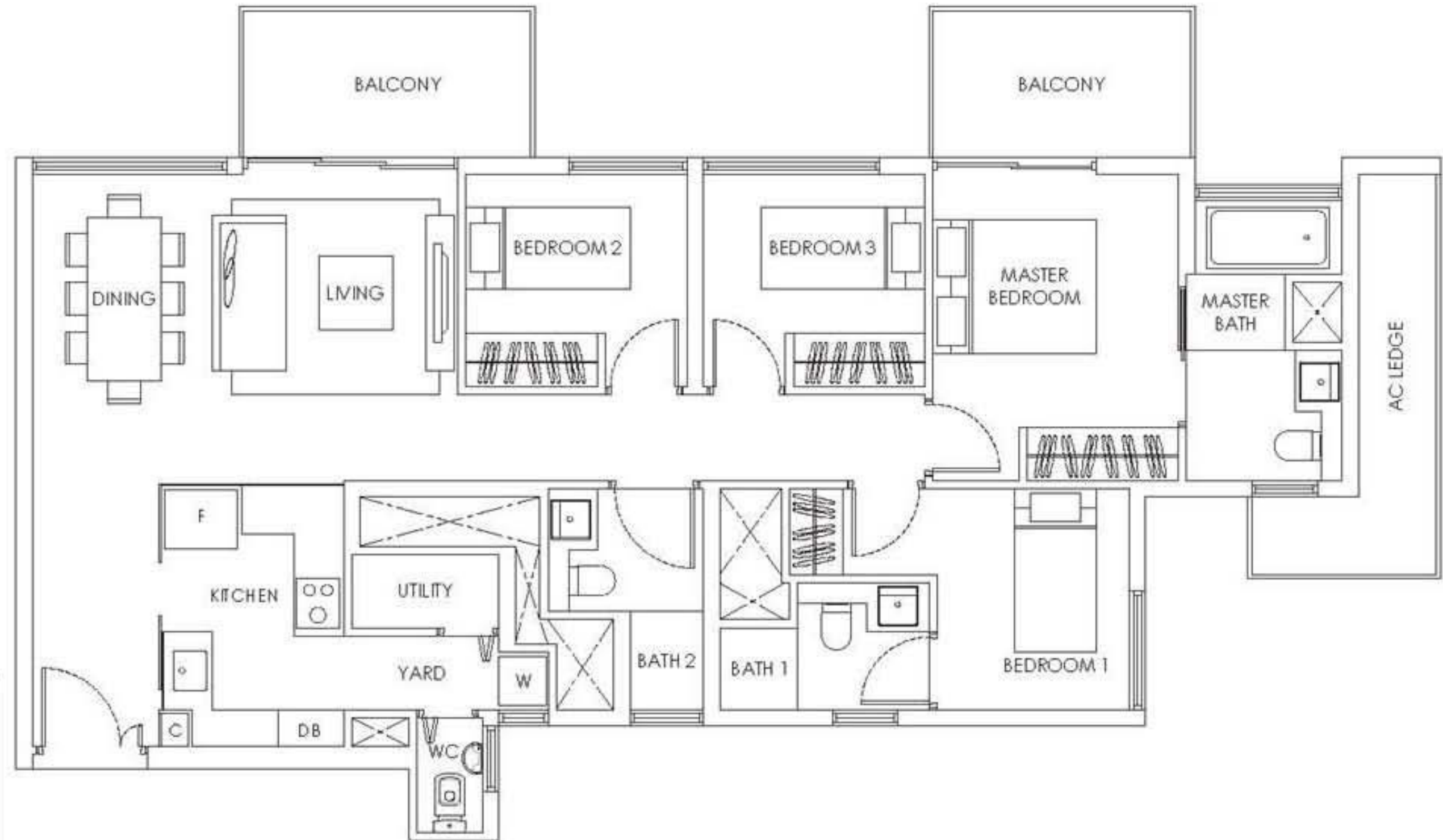
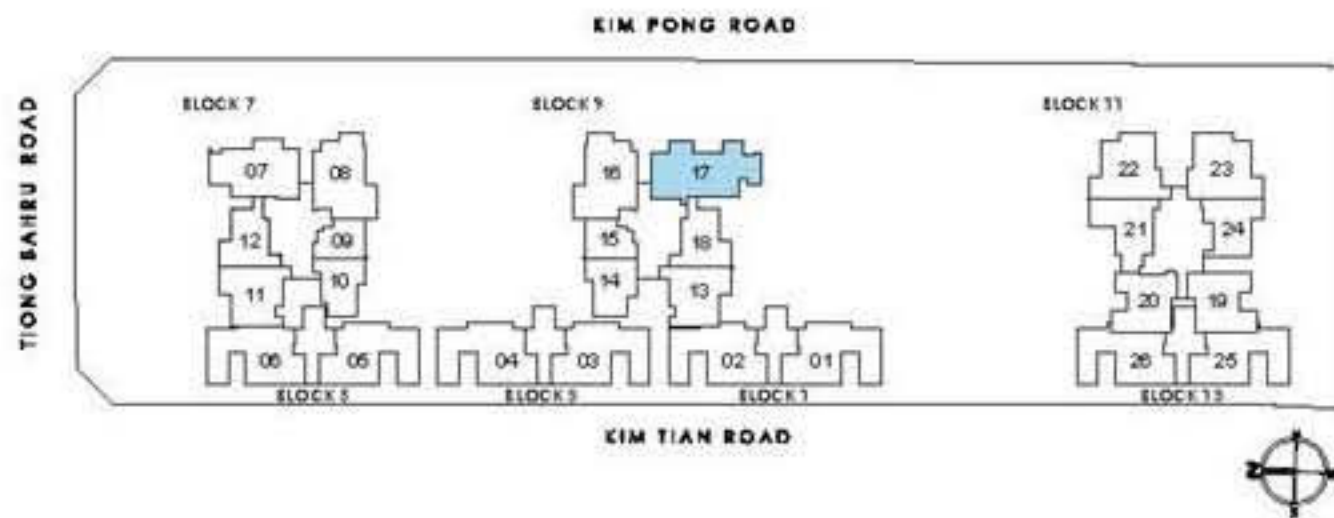
Balconies cannot be enclosed unless with the approved balcony screens. Area includes PES, AC ledge, balcony and roof terrace, if any. Some units are mirror images of the apartment plans shown in the brochure. Please refer to the key plans for orientation. All plans are not drawn to scale and are subject to changes pending approval by relevant authorities. All floor area are approximate measurements only and are subject to final survey.



4-BEDROOM DELUXE

TYPE D

120 SQ.M / 1292 SQ.FT
#02-17 TO #34-17



Balconies cannot be enclosed unless with the approved balcony screens. Area includes PES, AC ledge, balcony and roof terrace, if any. Some units are mirror images of the apartment plans shown in the brochure. Please refer to the key plans for orientation. All plans are not drawn to scale and are subject to changes pending approval by relevant authorities. All floor area are approximate measurements only and are subject to final survey.