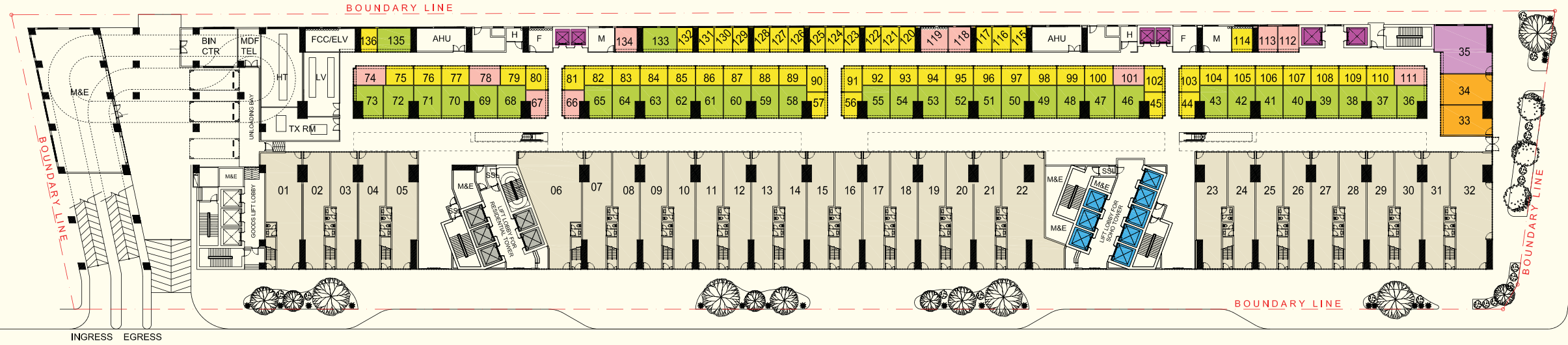


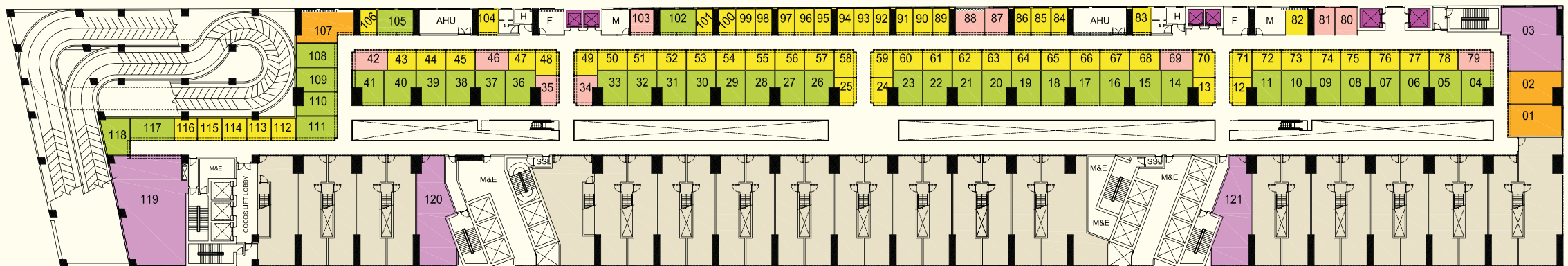
FLOOR PLANS

The  
**BRIDGE**

# 1ST FLOOR PLAN 商业单位一楼平面图



# 2ND FLOOR PLAN 商业单位二楼平面图



LEGEND:

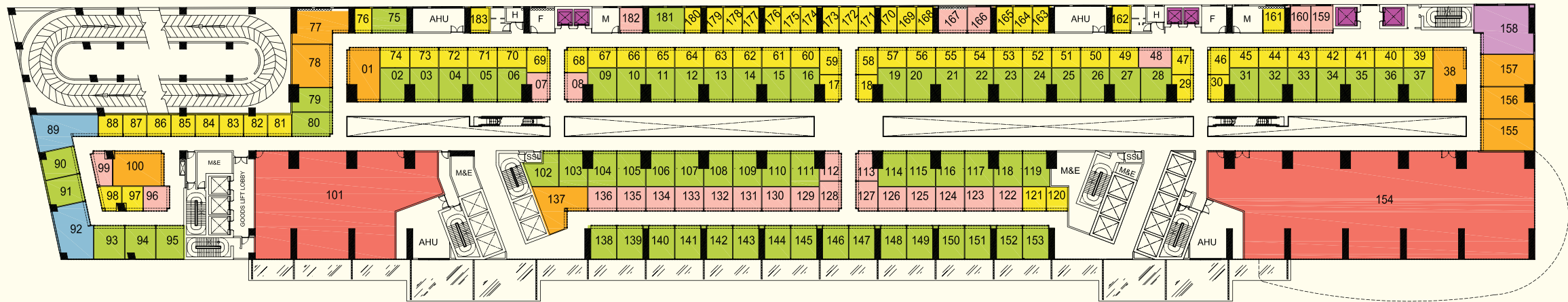
- : RETAIL (11.00 Sqm to 12.90sqm)\*
- : RETAIL (21.00 Sqm to 22.88sqm)\*
- : RETAIL (63.70 Sqm to 154.28sqm)\*
- : LIFTS FOR RETAIL MALL
- : LIFTS FOR SOHO TOWER
- : RETAIL (14.00 Sqm to 15.70sqm)\*
- : RETAIL (35.15 Sqm to 37.52sqm)\*
- : DUPLEX SHOPHOUSE (141.12 Sqm to 251.36sqm)\*
- : LIFTS FOR RESIDENTIAL TOWER

\*Unit area excludes common area, to be advised





**TYP. 3RD TO 4TH FLOOR PLAN** 商业单位三至四楼平面图



**LEGEND:**

- : RETAIL (11.00 Sqm to 12.90sqm)\*
- : RETAIL (21.00 Sqm to 22.50sqm)\*
- : RETAIL (42.40 Sqm to 42.48sqm)\*
- : F&B (374.40 Sqm to 709.44 sqm)\*
- : RETAIL (14.00 Sqm to 15.70sqm)\*
- : RETAIL (37.01 Sqm to 38.68sqm)\*
- : RETAIL (62.05 Sqm)\*
- : LIFTS FOR RETAIL MALL



\*Unit area excludes common area, to be advised

1 - BEDROOM UNITS



artist's impression



artist's impression



artist's impression

2 + STUDY UNITS



artist's impression



artist's impression

**TYPICAL TOWER 1 APARTMENT PLAN (LEVEL 14 TO 19, 21 TO 36, 38 TO 44)**

**典型住宅单位楼层平面图 (第14层 - 19层, 21层 - 36层, 38层 - 44层)**



**LEGEND:**

- 1 Bedroom  
1 房式
- 2 Bedroom + Study  
2 房式 + 书房区
- 3 Bedroom  
3 房式



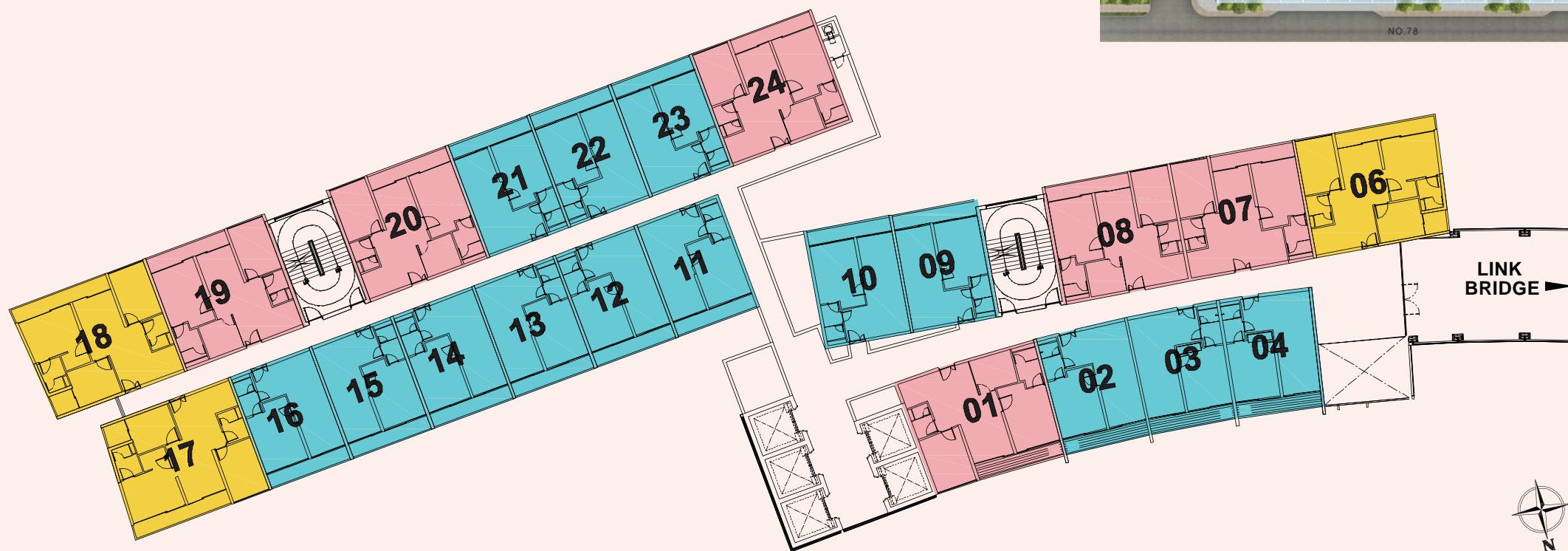


3- BEDROOM UNITS



**TYPICAL TOWER 1 APARTMENT PLAN (LEVEL 20 & 37)**

典型住宅单位楼层平面图 (第20层和37层)



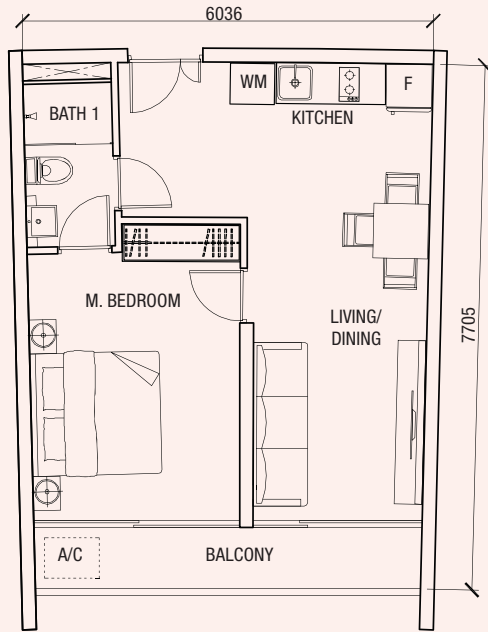
**LEGEND:**

- 1 Bedroom  
1 房式
- 2 Bedroom + Study  
2 房式 + 书房区
- 3 Bedroom  
3 房式



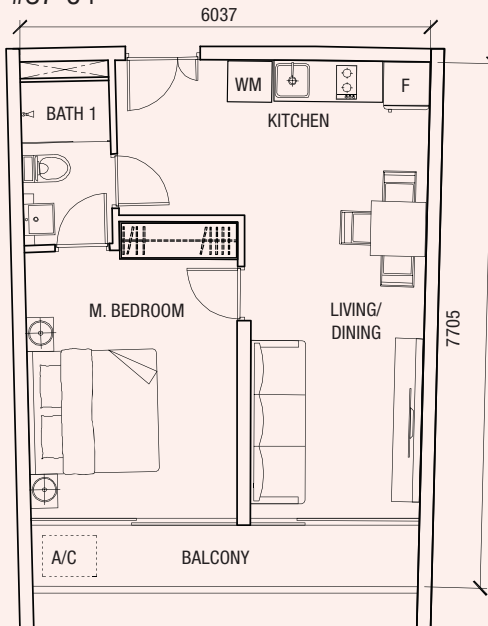
**TYPE A1 • 1 bedrm**  
Total Area 70.15sq m\* (48.57sq m)

#14-02 to #44-02 | mirrored  
#14-04 to #19-04 | #14-03 to #44-03  
#21-04 to #36-04  
#38-04 to #44-04



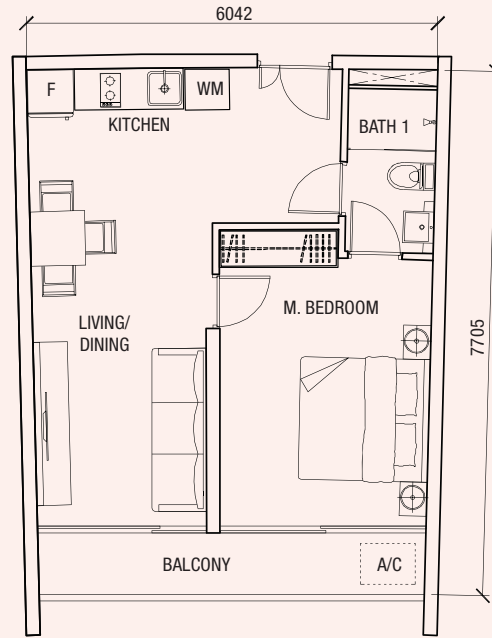
**TYPE A1a • 1 bedrm**  
Total Area 71.31sq m\* (49.37sq m)

#20-04  
#37-04



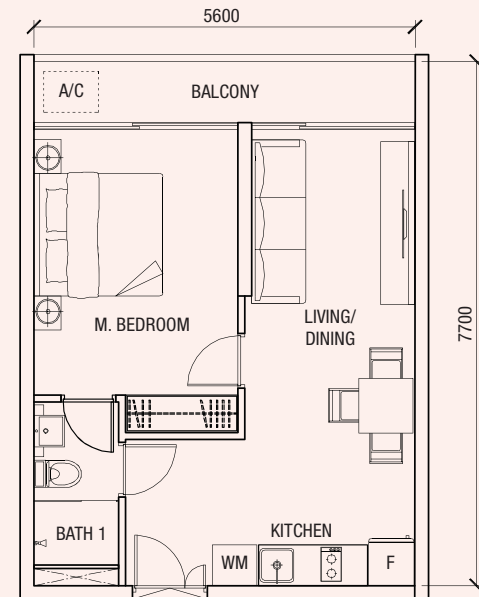
**TYPE A2 • 1 bedrm**  
Total Area 71.34sq m\* (49.39sq m)

#14-05 to #19-05  
#21-05 to #36-05  
#38-05 to #44-05



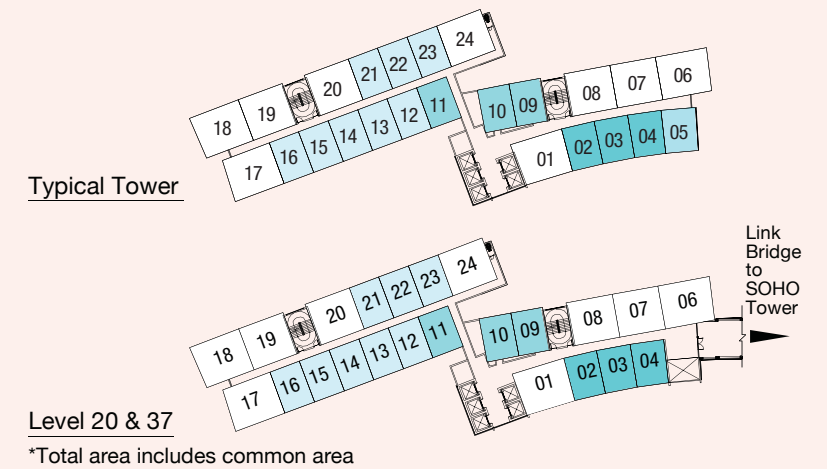
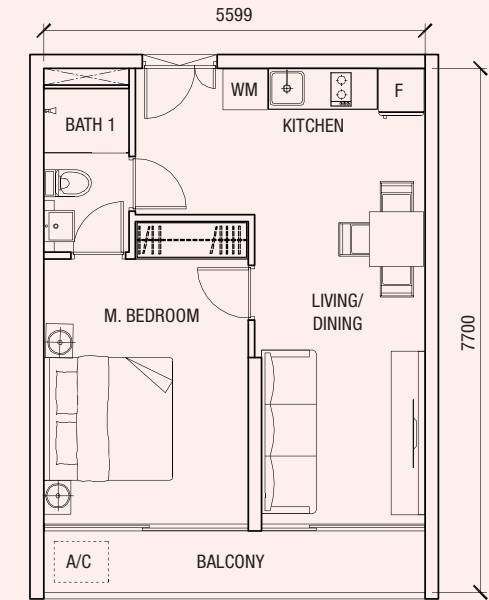
**TYPE A3 • 1 bedrm**  
Total Area 68.18sq m\* (47.20sq m)

#14-10 to #44-10 | mirrored  
#14-11 to #44-11 | #14-09 to #44-09



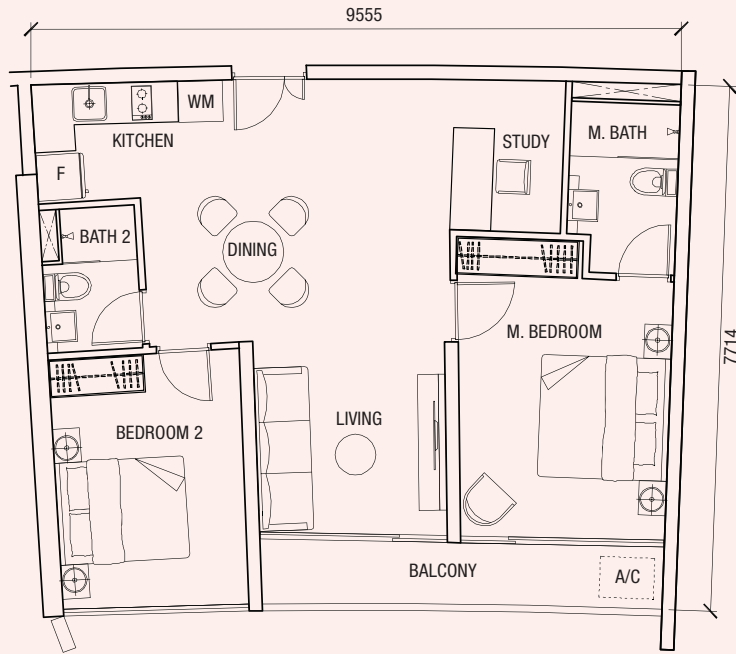
**TYPE A4 • 1 bedrm**  
Total Area 67.02sq m\* (46.40sq m)

#14-12 to #44-12 | mirrored  
#14-14 to #44-14 | #14-13 to #44-13  
#14-16 to #44-16 | #14-15 to #44-15  
#14-21 to #44-21 | #14-22 to #44-22  
#14-23 to #44-23



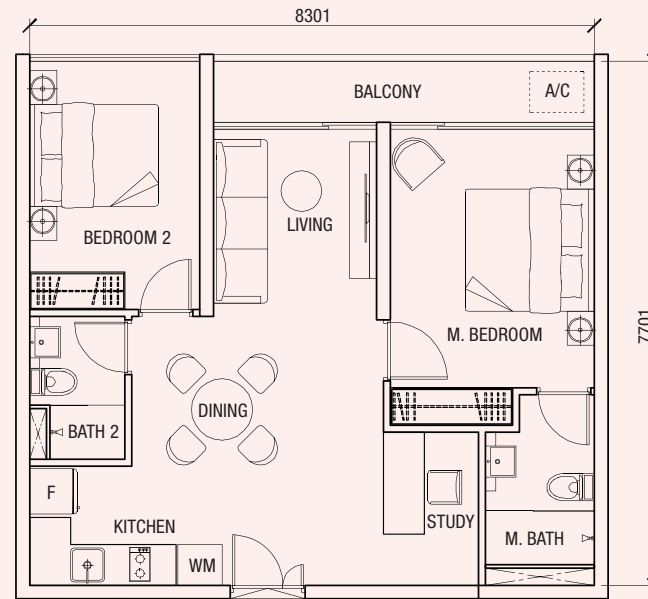
TYPE B1 • 2 bedrm + study  
Total Area 109.67sq m\* (75.93sq m)

#14-01 to #44-01



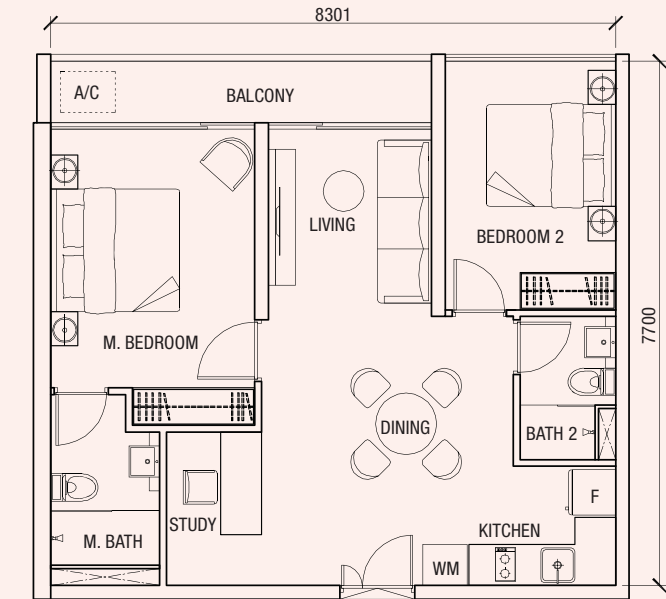
TYPE B2 • 2 bedrm + study  
Total Area 98.22sq m\* (68.00sq m)

#14-07 to #44-07



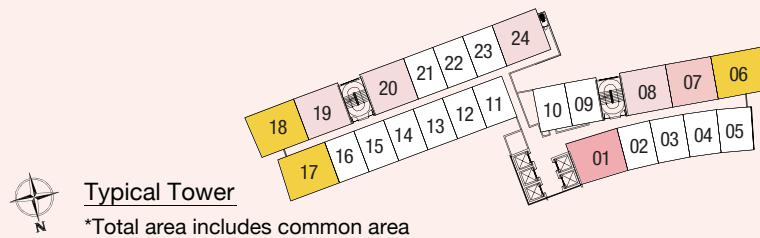
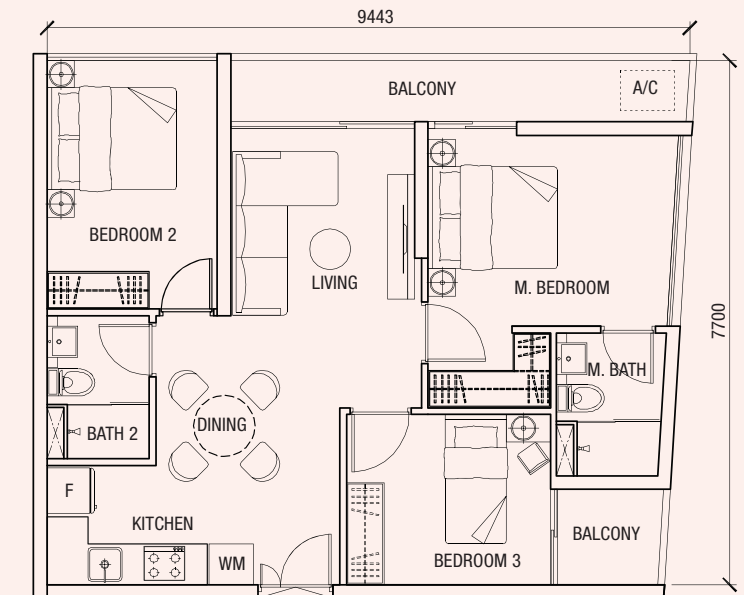
TYPE B3 • 2 bedrm + study  
Total Area 99.37sq m\* (68.80sq m)

#14-08 to #44-08 | mirrored  
#14-19 to #44-19 |  
#14-24 to #44-24



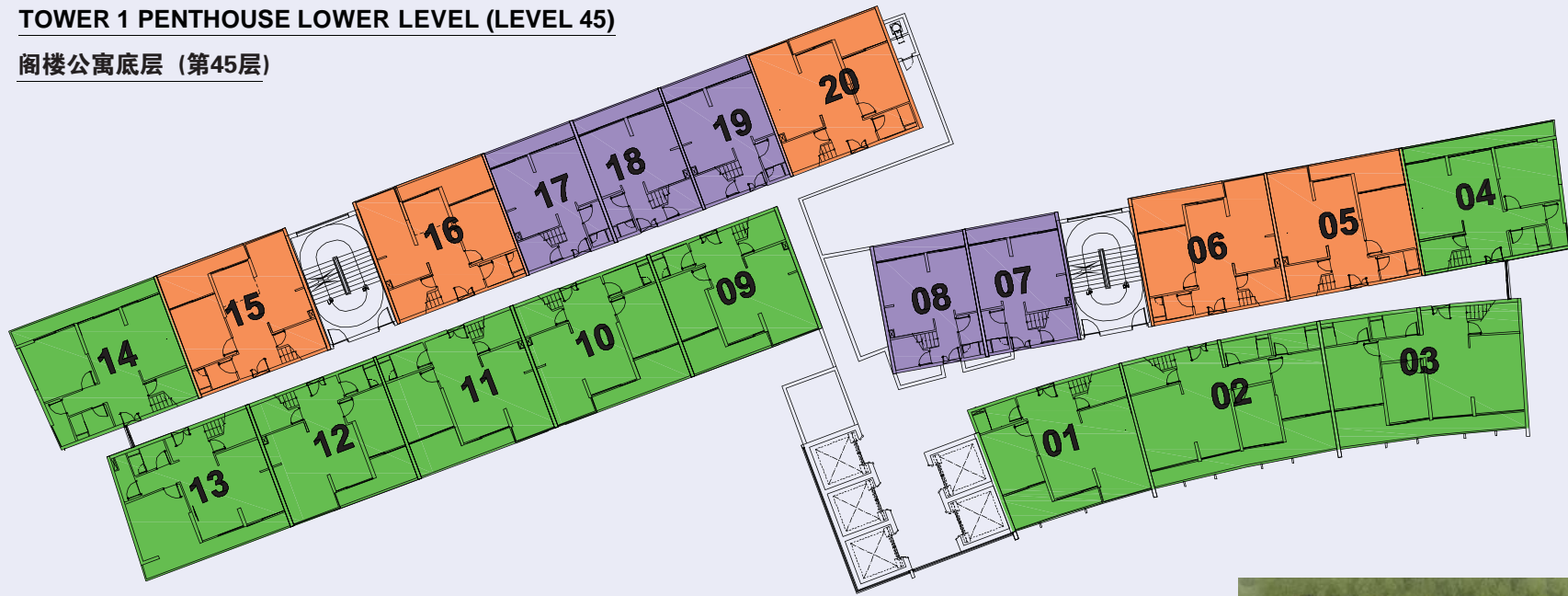
TYPE C • 3 bedrm  
Total Area 108.68sq m\* (75.24sq m)

#14-06 to #44-06 | mirrored  
#14-17 to #44-17 |



**TOWER 1 PENTHOUSE LOWER LEVEL (LEVEL 45)**

阁楼公寓底层 (第45层)



**TOWER 1 PENTHOUSE UPPER LEVEL**

阁楼公寓顶层



**LEGEND:**  
**PENTHOUSE 阁楼公寓**

2 Bedroom  
2 房式

3 Bedroom  
3 房式

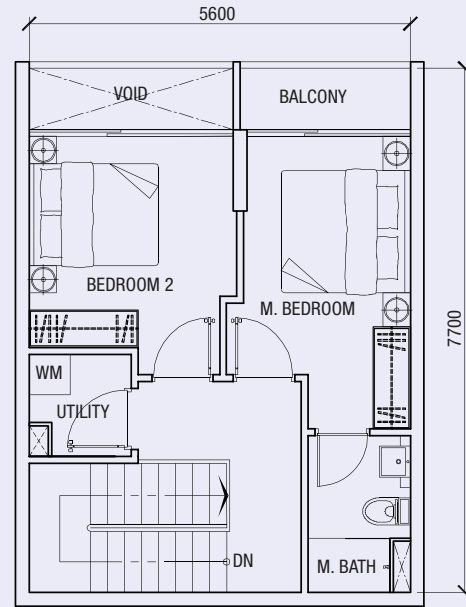
4 Bedroom  
4 房式





TYPE D1 • 2 bedrm  
Total Area 131.73sq m\* (91.20sq m)

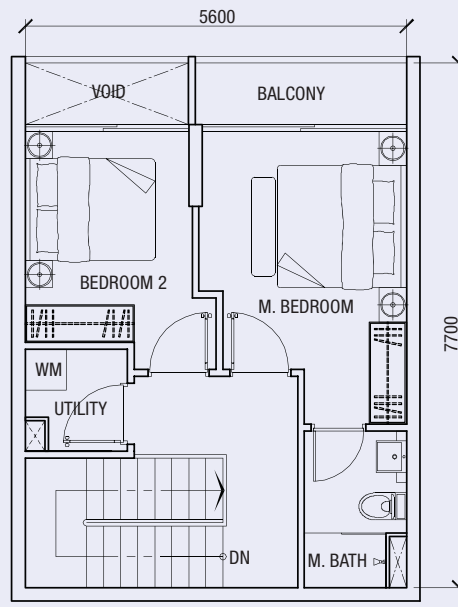
#45-07 (mirrored)  
#45-08



Upper level

TYPE D2 • 2 bedrm  
Total Area 130.43sq m\* (90.30sq m)

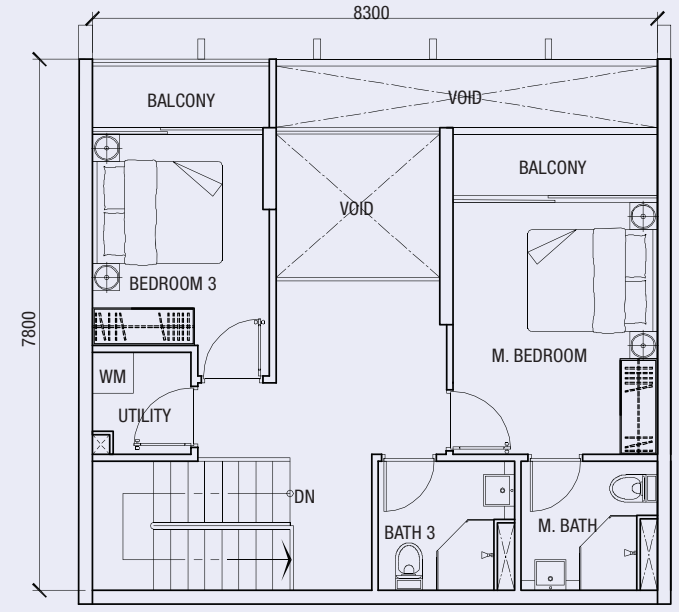
#45-17/19  
#45-18 (mirrored)



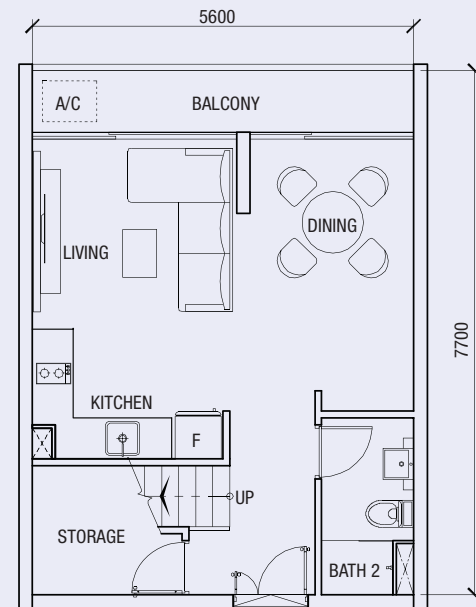
Upper level

TYPE D3 • 3 bedrm  
Total Area 180.59sq m\* (125.03sq m)

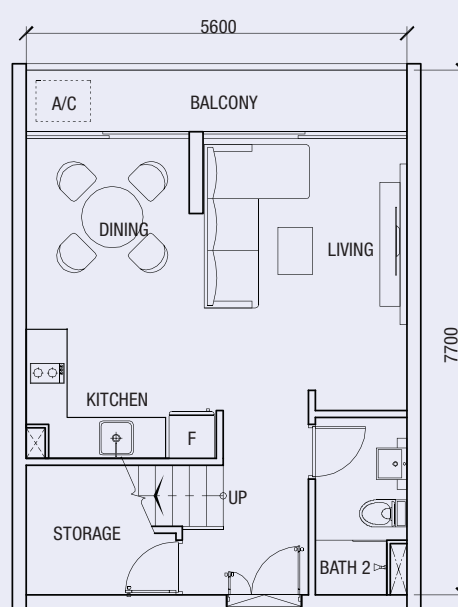
#45-05



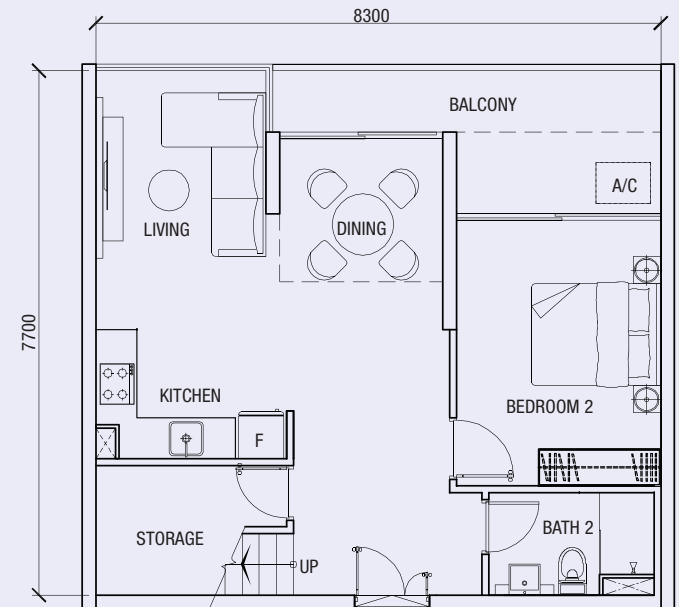
Upper level



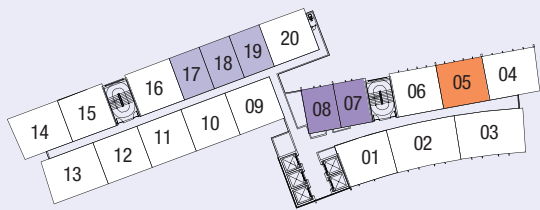
Lower level



Lower level



Lower level

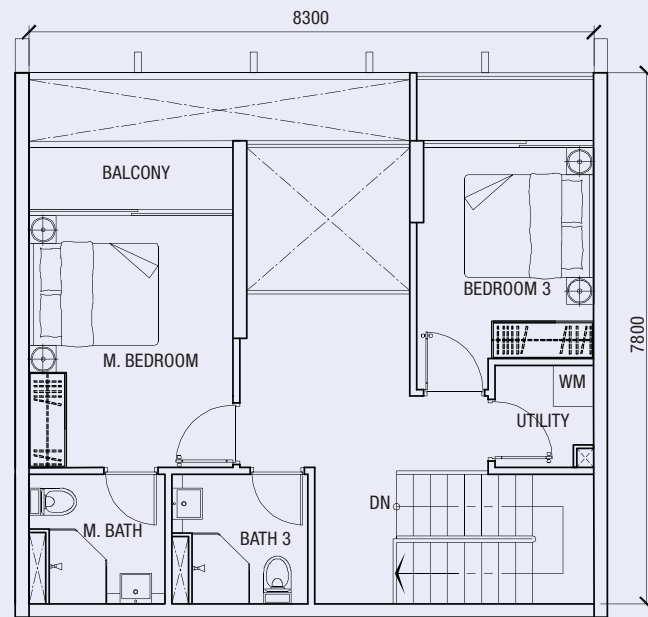


\*Total area includes common area

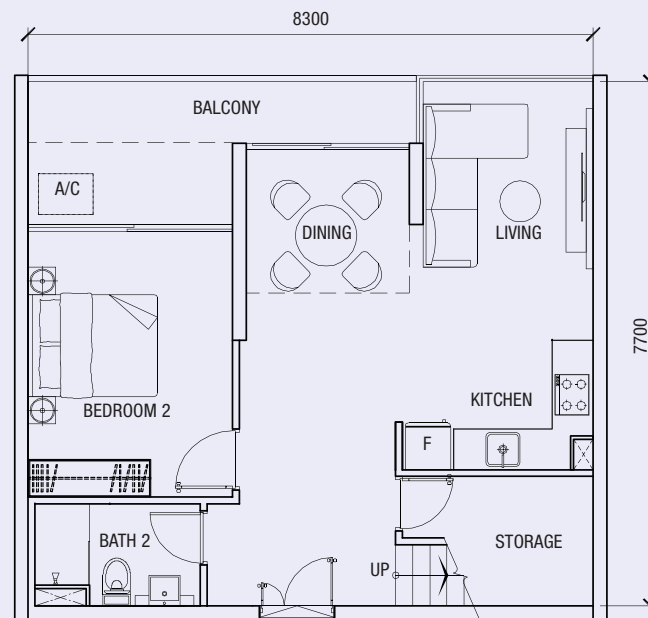


TYPE D4 • 3 bedrm • sq m\*  
 Total Area 182.82sq m\* (126.57sq m)

#45-06/15  
 #45-16/20 (mirrored)



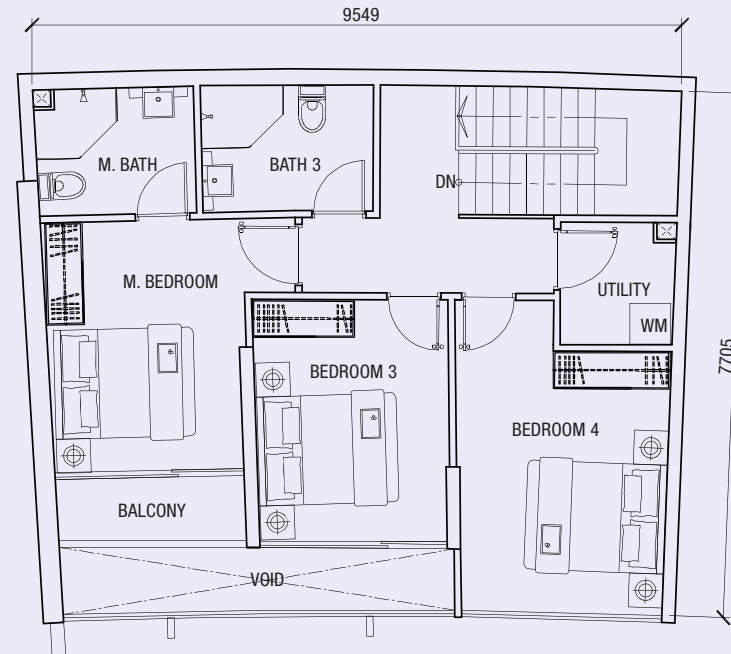
Upper level



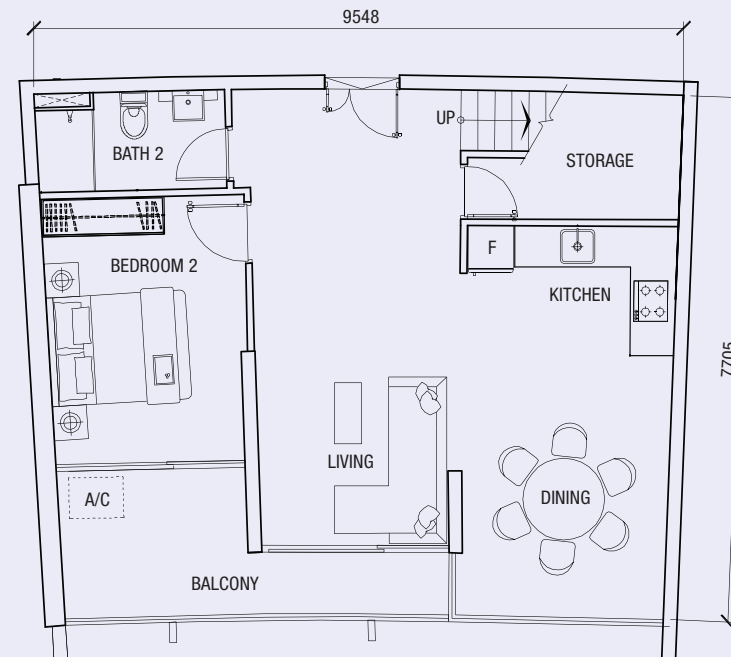
Lower level

TYPE D5 • 4 bedrm • sq m\*  
 Total Area 210.42sq m\* (145.68sq m)

#45-01



Upper level



Lower level

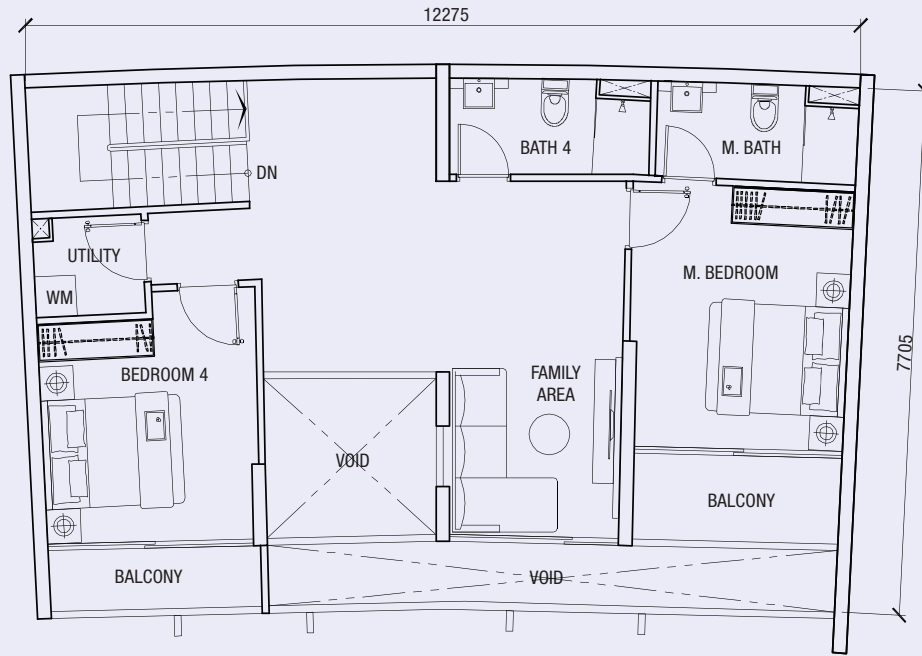


\*Total area includes common area



TYPE D6 • 4 bedrm  
Total Area 259.70sq m\* (179.80sq m)

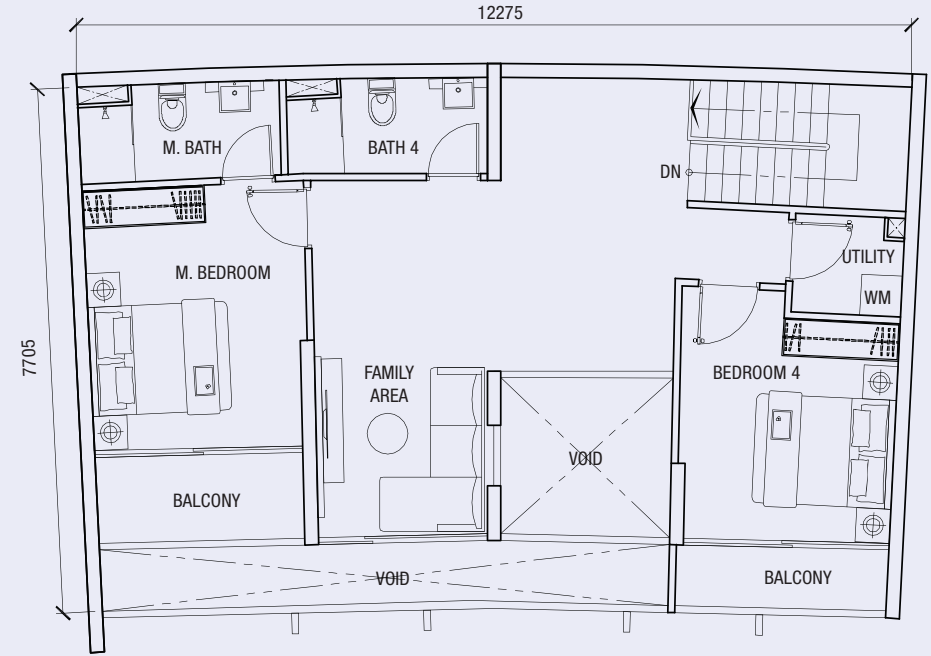
#45-02



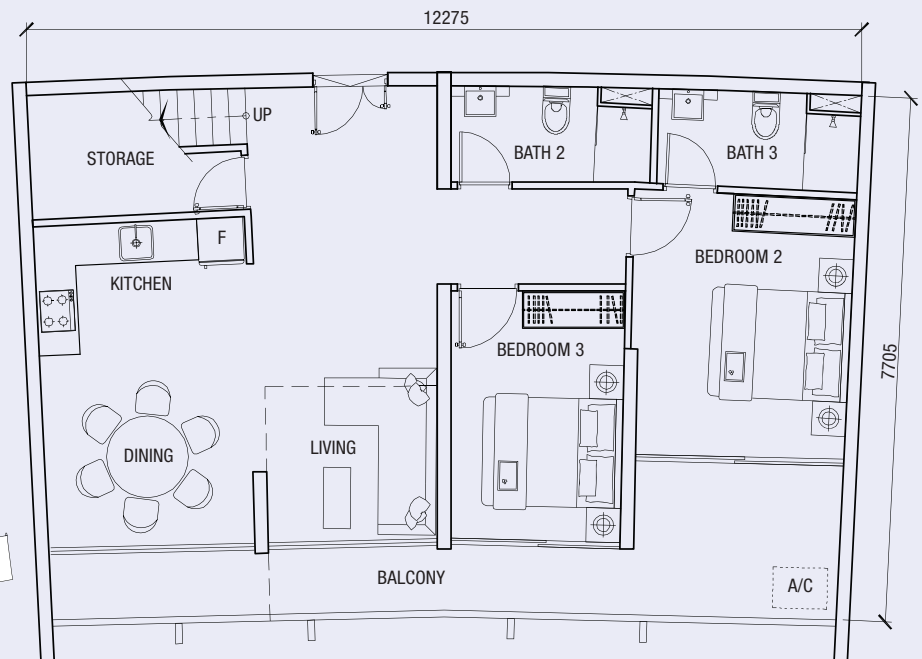
Upper level

TYPE D7 • 4 bedrm  
Total Area 262.00sq m\* (181.39sq m)

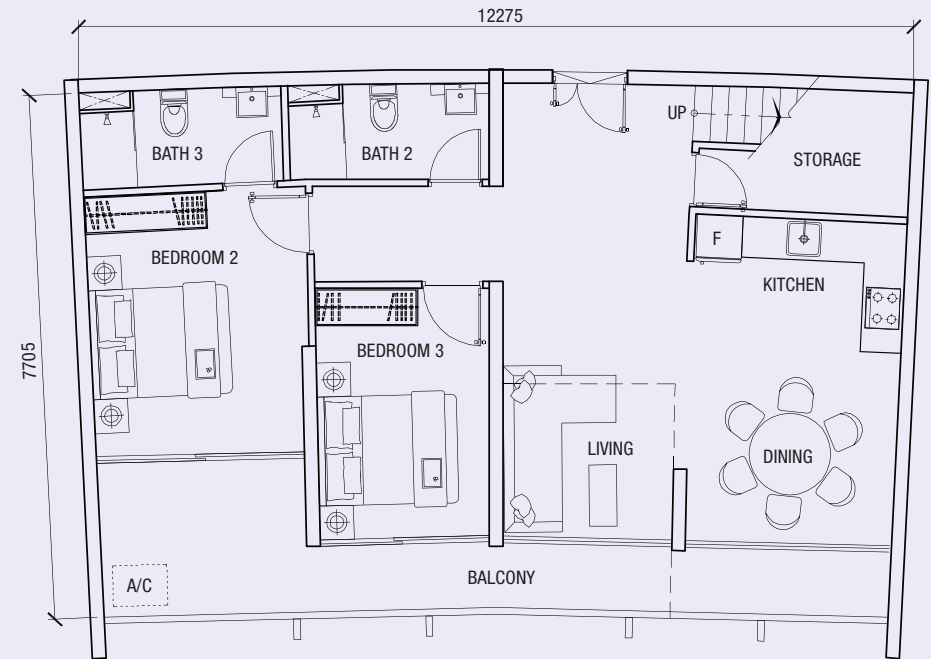
#45-03



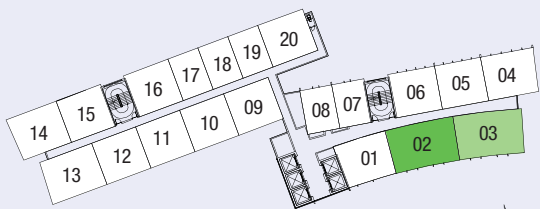
Upper level



Lower level



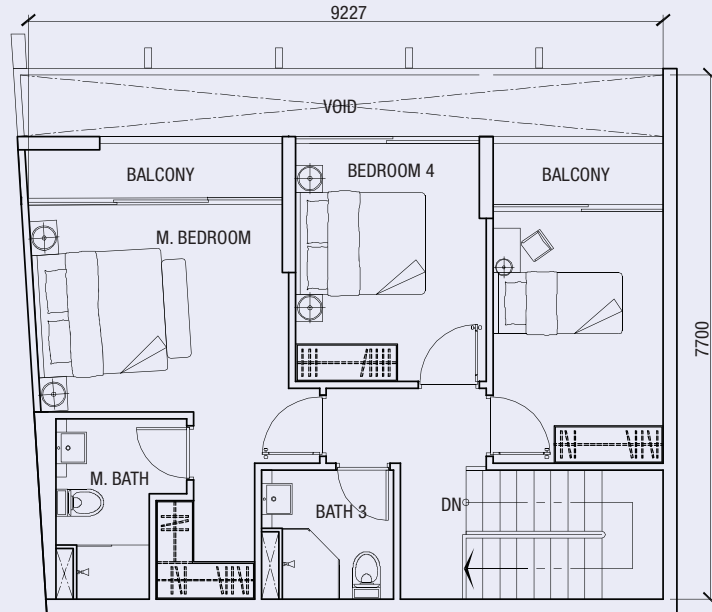
Lower level



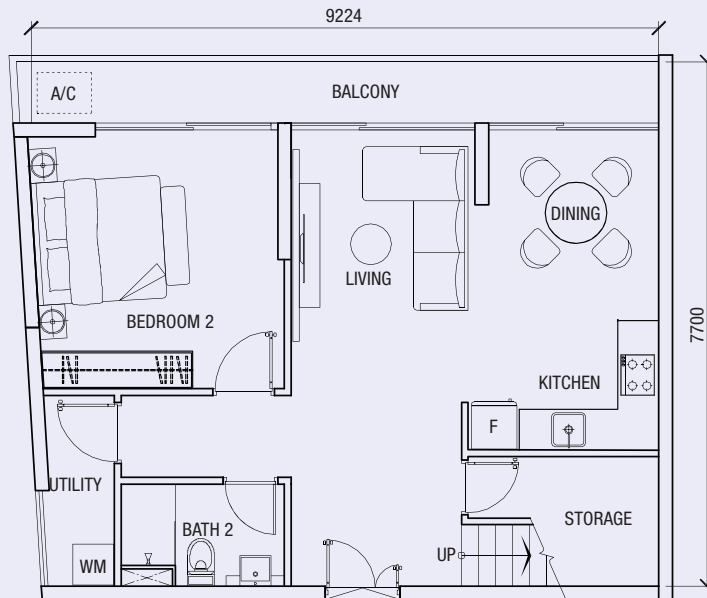
\*Total area includes common area

TYPE D8 • 4 bedrm  
 Total Area 203.49sq m\* (140.88sq m)

#45-04 (mirrored)  
 #45-14



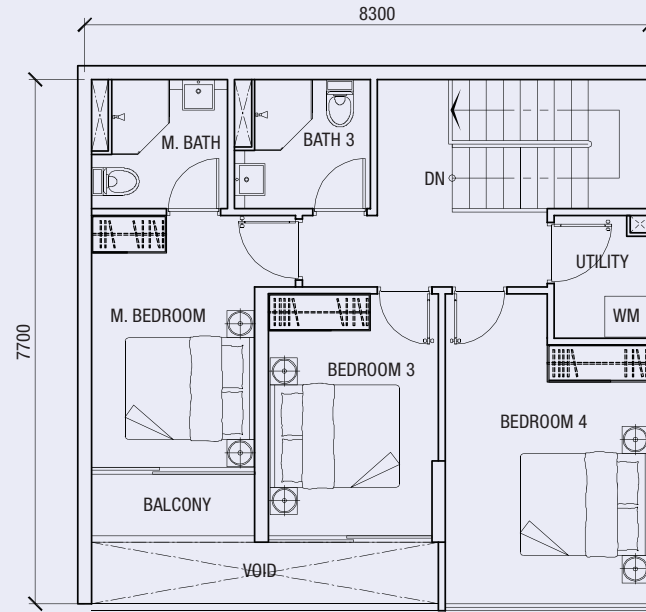
Upper level



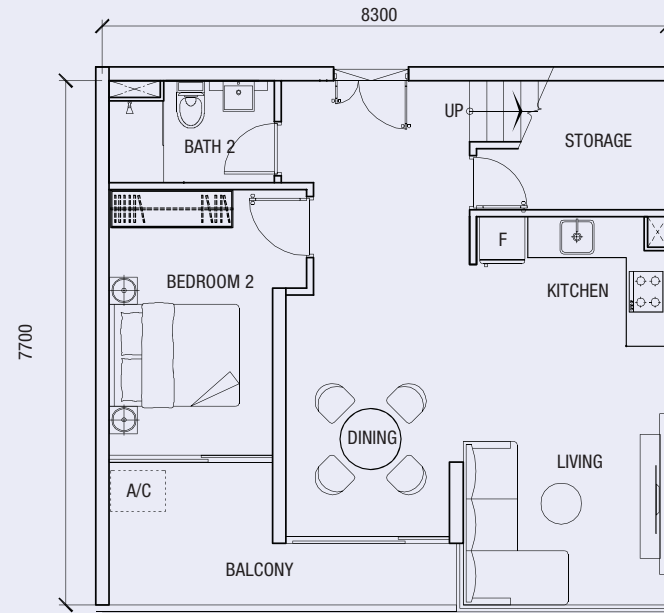
Lower level

TYPE D9 • 4 bedrm  
 Total Area 188.94sq m\* (130.81sq m)

#45-09



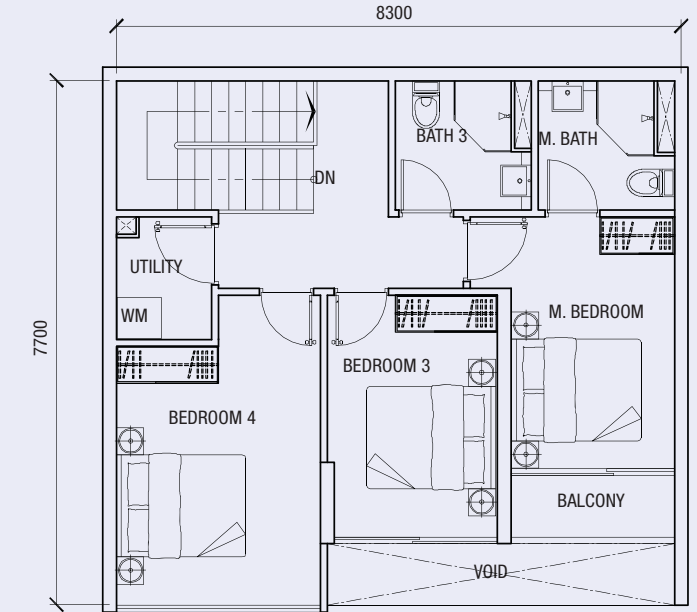
Upper level



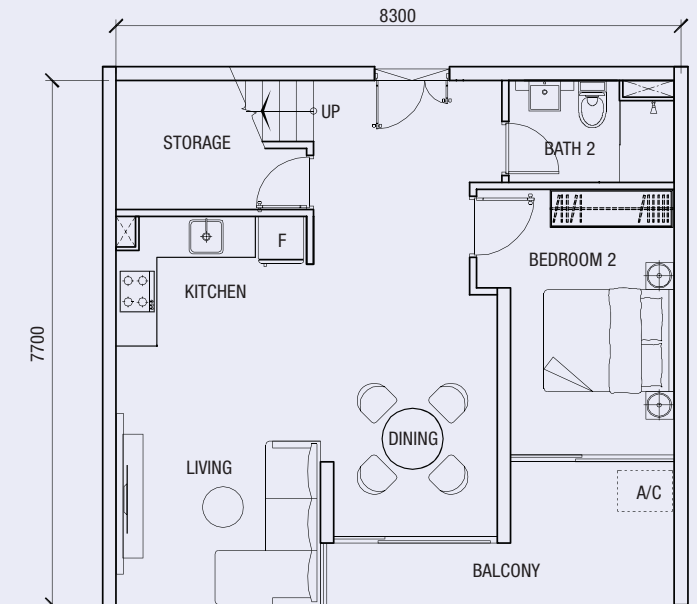
Lower level

TYPE D10 • 4 bedrm  
 Total Area 186.75sq m\* (129.29sq m)

#45-12



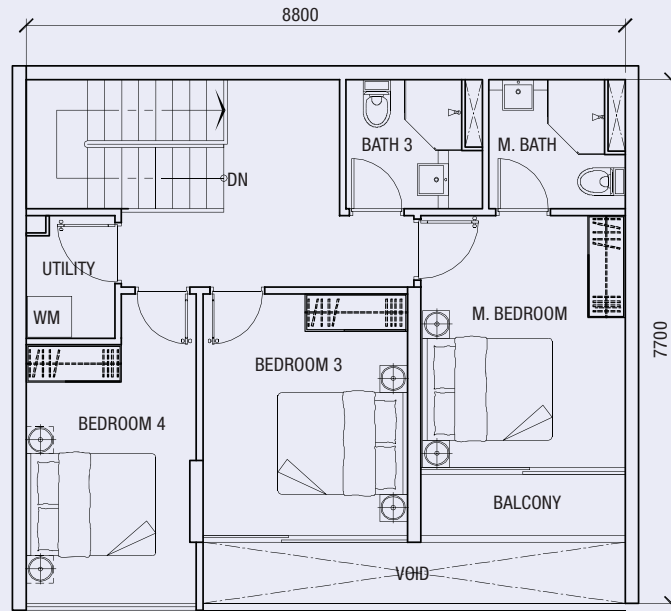
Upper level



Lower level

TYPE D11 • 4 bedrm  
 Total Area 198.89sq m\* (137.70sq m)

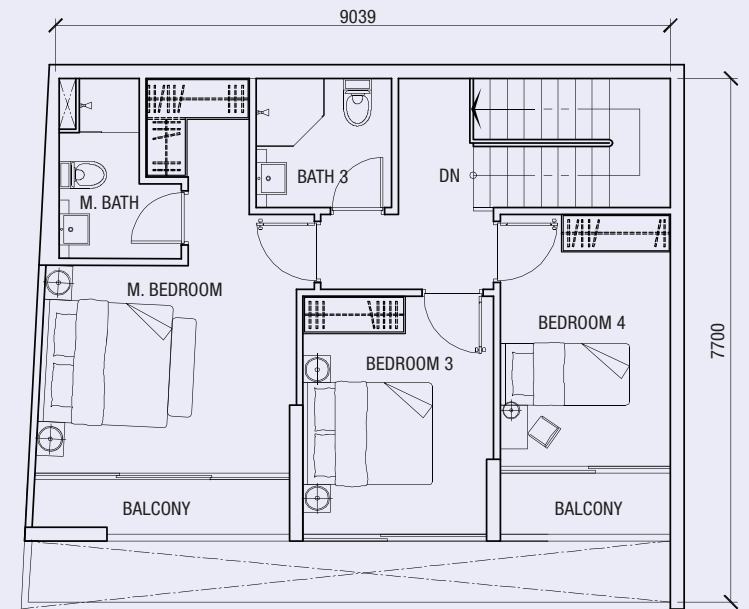
#45-10  
 #45-11 (mirrored)



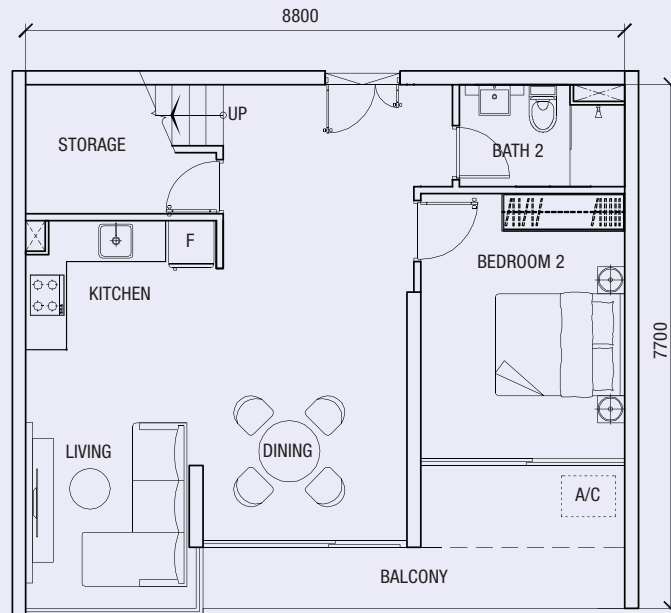
Upper level

TYPE D12 • 4 bedrm  
 Total Area 204.27sq m\* (141.42sq m)

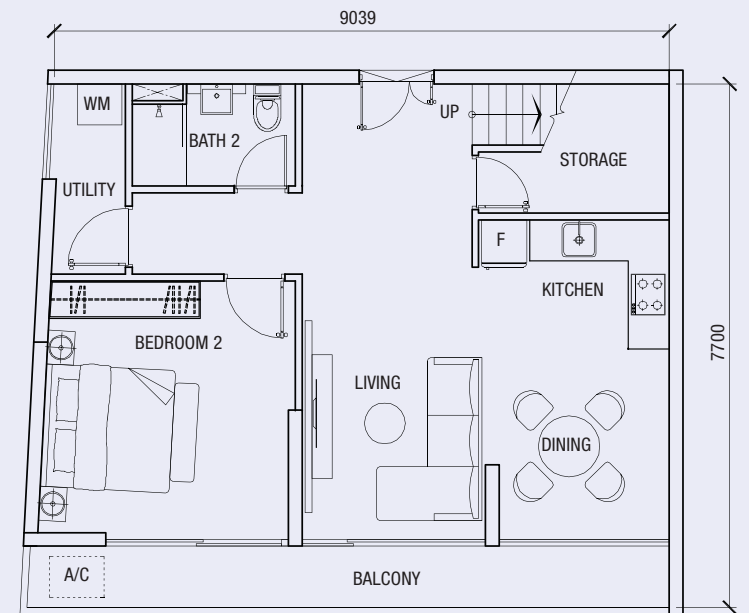
#45-13



Upper level



Lower level



Lower level



\*Total area includes common area





Dual flexibility of use as office as well as home. Units come with high ceiling of 3.6m, allows for flexibility & creativity in layout. Fitted with its own shower & toilet facilities.

**TYPICAL TOWER 2 SOHO PLAN (LEVEL 14 TO 17, 20 TO 31, 34 TO 39)**

**居家办公室楼层平面图 (第14层 - 17层, 20层 - 31层和34层 - 39层)**





双层居家办公室单位，拥有3.6米高的天花板，卫浴设施齐全。和住家的完美结合。

**TYPICAL TOWER 2 SOHO PLAN (LEVEL 18,19, 32 & 33)**

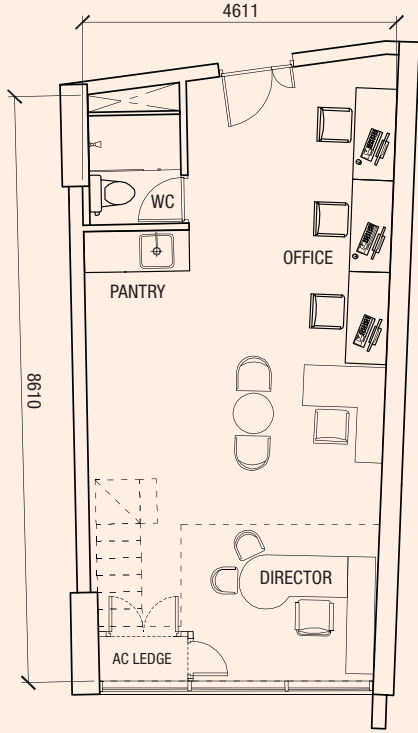
居家办公室楼层平面图 (第18层, 19层, 32层和33层)



**TYPE E1**

Total Area 62.97sq m\* (43.69sq m)

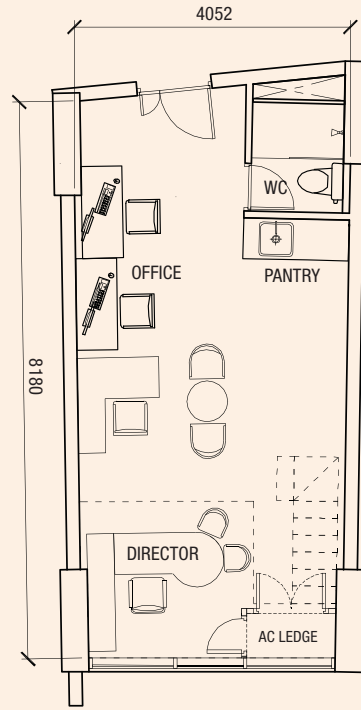
#14-25 to #39-25



**TYPE E2**

Total Area 52.49sq m\* (36.42sq m)

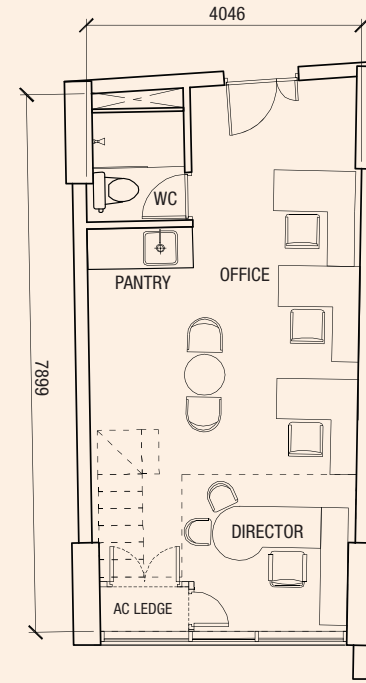
#14-26 to #39-26



**TYPE E3**

Total Area 50.43sq m\* (34.99sq m)

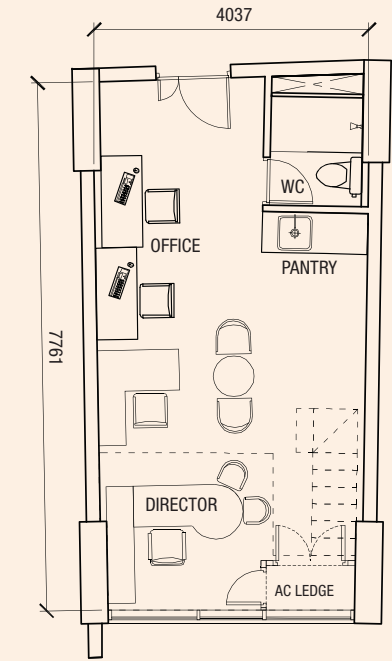
#14-27 to #39-27



**TYPE E4**

Total Area 49.10sq m\* (34.07sq m)

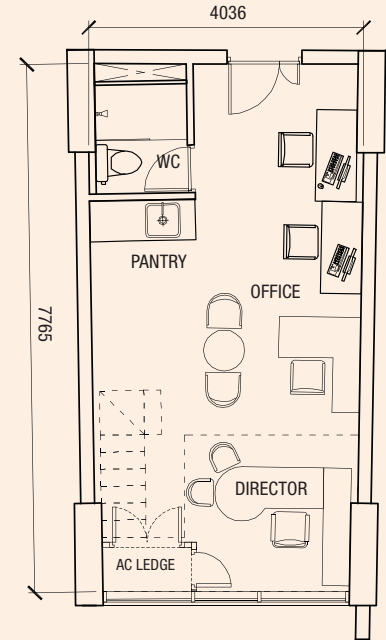
#14-28 to #39-28



**TYPE E5**

Total Area 48.73sq m\* (33.81sq m)

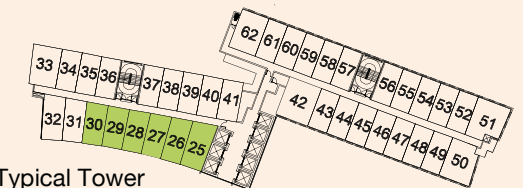
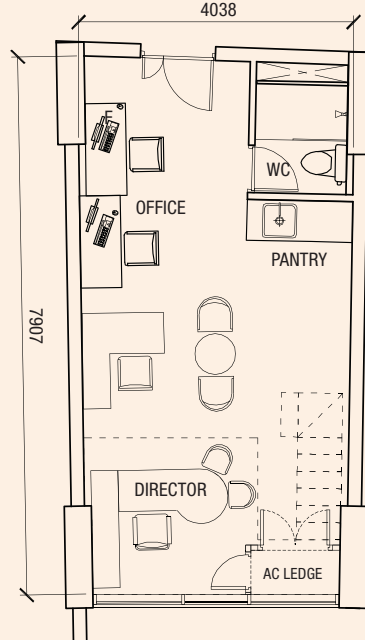
#14-29 to #39-29



**TYPE E6**

Total Area 49.27sq m\* (34.19sq m)

#14-30 to #39-30



Typical Tower

\*Total area includes common area  
\*Staircase and Bed Deck shown are not inclusive

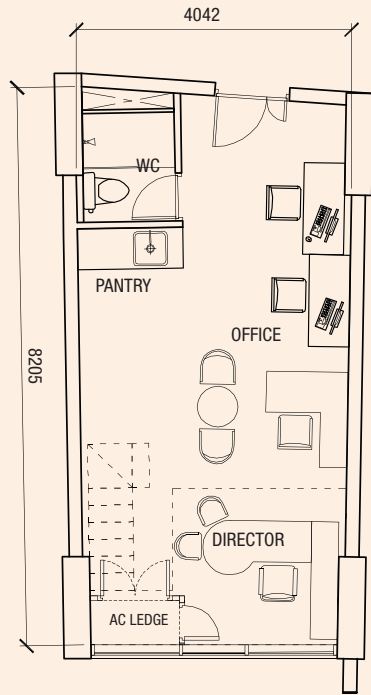




### TYPE E7

Total Area 50.63sq m\* (35.13sq m)

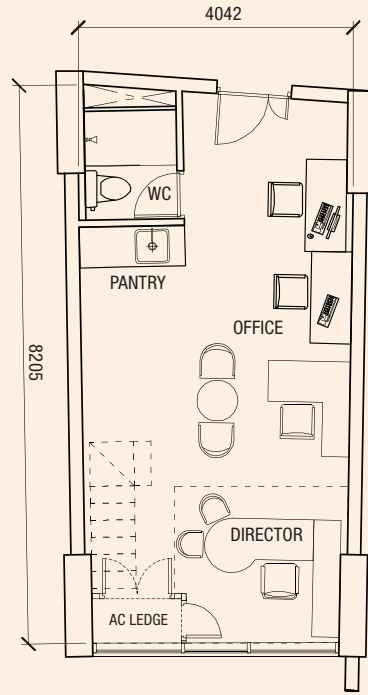
#14-31 to #17-31  
#20-31 to #31-31  
#34-31 to #39-31



### TYPE E7a

Total Area 51.85sq m\* (35.98sq m)

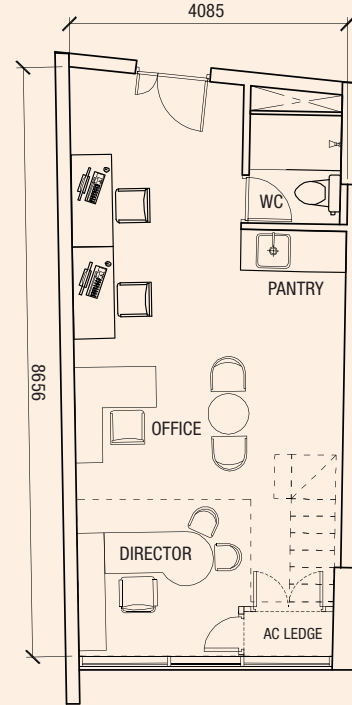
#18-31 to #19-31  
#32-31 to #33-31



### TYPE E8

Total Area 54.35sq m\* (37.71sq m)

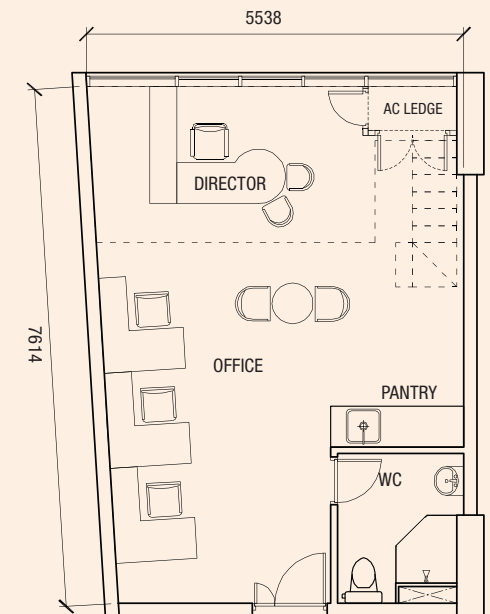
#14-32 to #17-32  
#20-32 to #31-32  
#34-32 to #39-32



### TYPE E9

Total Area 64.61sq m\* (44.83sq m)

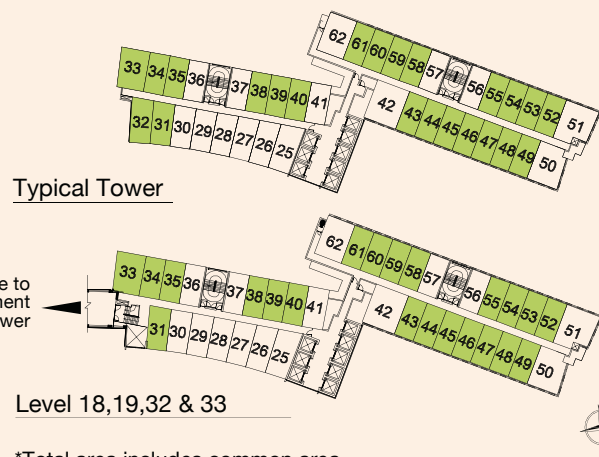
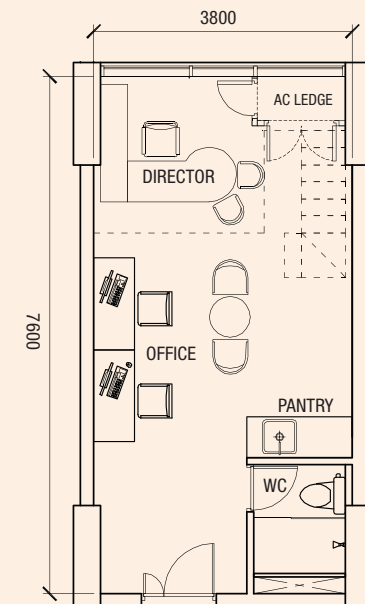
#14-33 to #39-33



### TYPE E10

Total Area 46.12sq m\* (32.00sq m)

#14-35 to #39-35	(mirrored)
#14-39 to #39-39	#14-34 to #39-34
#14-43 to #38-43	#14-38 to #39-38
#14-45 to #38-45	#14-40 to #39-40
#14-47 to #38-47	#14-44 to #38-44
#14-49 to #38-49	#14-46 to #38-46
#14-52 to #38-52	#14-48 to #38-48
#14-54 to #38-54	#14-53 to #38-53
#14-58 to #38-58	#14-55 to #38-55
#14-60 to #38-60	#14-59 to #38-59
	#14-61 to #38-61

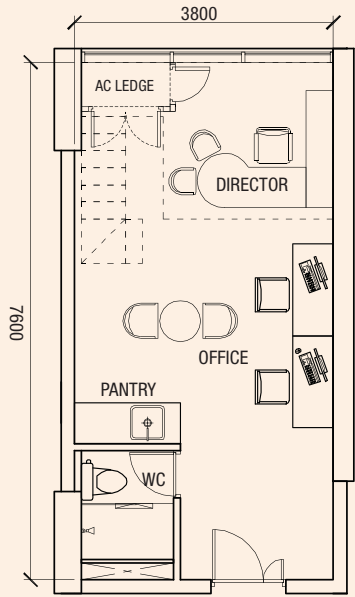


\*Total area includes common area  
\*Staircase and Bed Deck shown are not inclusive

**TYPE E11**

Total Area 47.27sq m\* (32.80sq m)

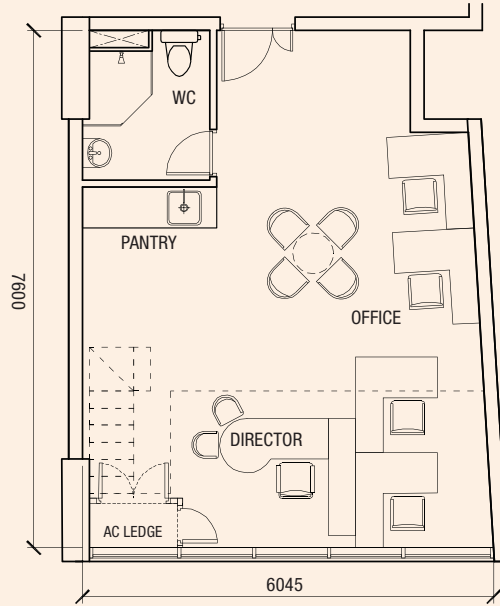
- #14-36 to #39-36 (mirrored)
- #14-57 to #38-57 #14-37 to #39-37
- #14-41 to #39-41
- #14-56 to #38-56



**TYPE E12**

Total Area 68.73sq m\* (47.69sq m)

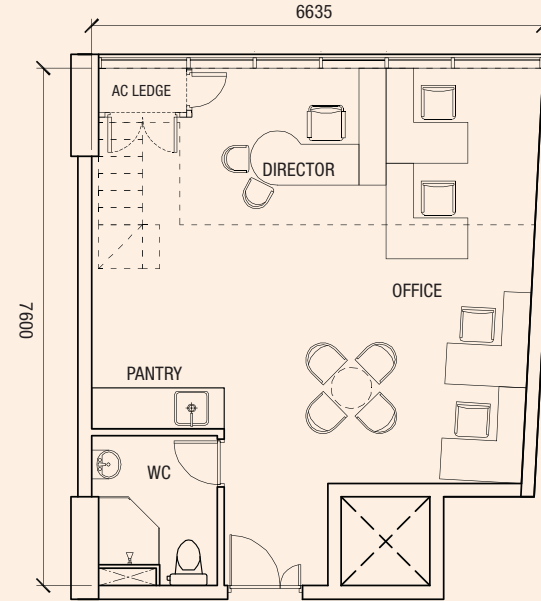
- #14-50 to #38-50



**TYPE E13**

Total Area 71.58sq m\* (49.67sq m)

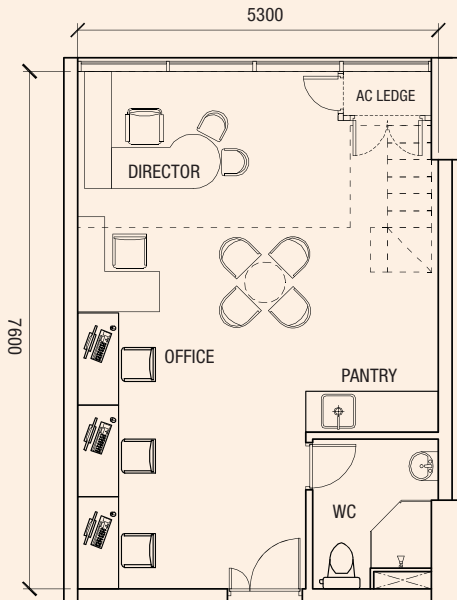
- #14-51 to #38-51



**TYPE E14**

Total Area 64.57sq m\* (44.80sq m)

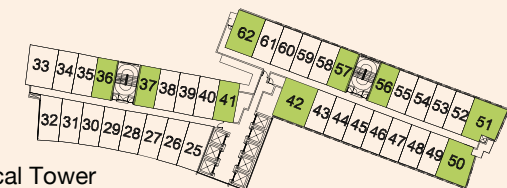
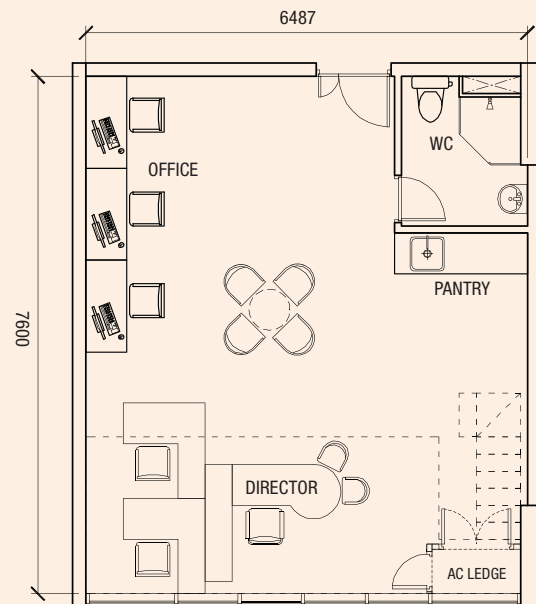
- #14-62 to #38-62



**TYPE E15**

Total Area 78.27sq m\* (54.31sq m)

- #14-42 to #38-42



Typical Tower

\*Total area includes common area  
\*Staircase and Bed Deck shown are not inclusive









artist's impression

A Prestigious Project Jointly Developed By

Developer : Oxley Diamond (Cambodia) Co, Ltd  
License No. : (pending)  
Construction Permit : (pending)



Oxley International Holdings Pte Ltd



Worldbridge Land (Cambodia) Co., Ltd.

**Disclaimer**

While reasonable care has been taken in the preparation of this brochure, the developer cannot be held responsible for any inaccuracies or omissions. The statements, information and depictions shall not be regarded or relied upon as statements or representations of facts, and are subject to such changes as may be required by the developer or the relevant authorities, and cannot form part of an offer or contract. Visual representations, digital images, models, showflat, illustrations, photographs, pictures, drawings, displays and art renderings are artist's impressions only (which serve only to give an approximate idea of the project), and cannot be regarded as representation of facts. All plans and layouts are not to scale and are subject to change/amendments as may be directed or approved by the relevant authorities or required by the architect. The floor areas indicated in the brochure are approximate measurements only and are subject to final survey. The information included in this brochure is accurate as at the time of printing and there may be changes subsequently as may be required by the architects and relevant authorities. For the avoidance of any doubt, the information herein shall not form part of the Option or Sales and Purchase Agreement governing the terms and conditions of the sale and purchase of the unit.

