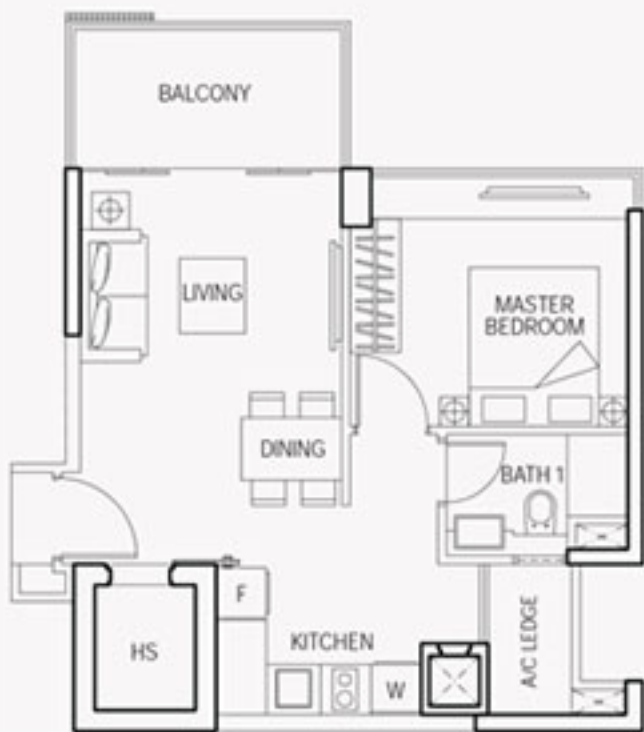


One-bedroom



TYPE S

527 sq ft

#04-07 to #18-07*



* #18-07 - Balcony opens to sky with trellises above

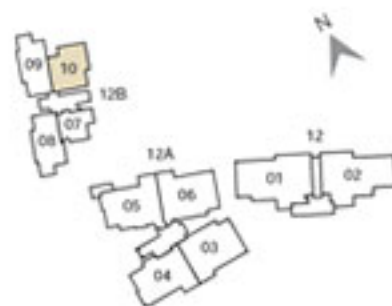
Two-bedroom



TYPE A1

915 sq ft

#03-10 to #18-10*



*#18-10 - Balcony opens to sky with trellises above

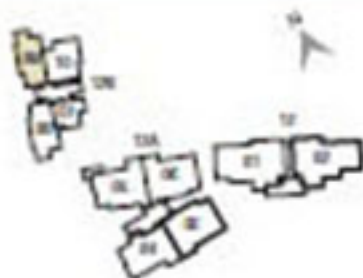
Two-bedroom



TYPE A2

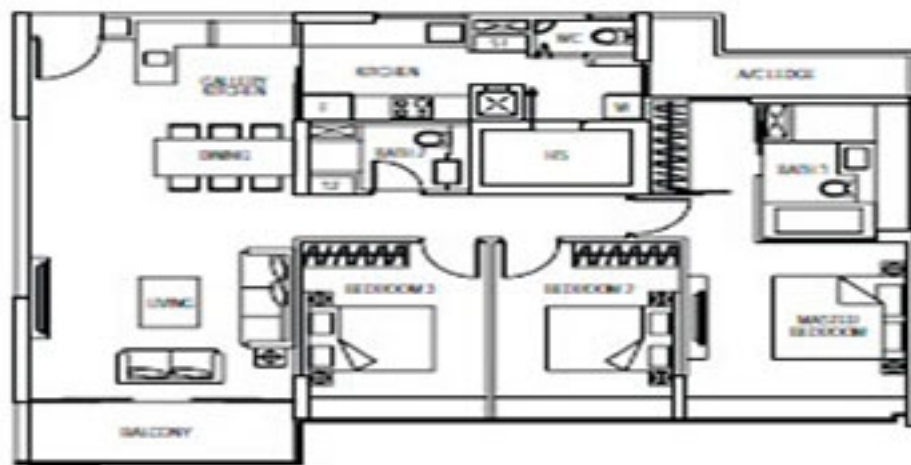
883 sq ft

#03 09 to #18 09*



*#18 09 - balcony opens to a 7' wide outdoor terrace

Three-bedroom

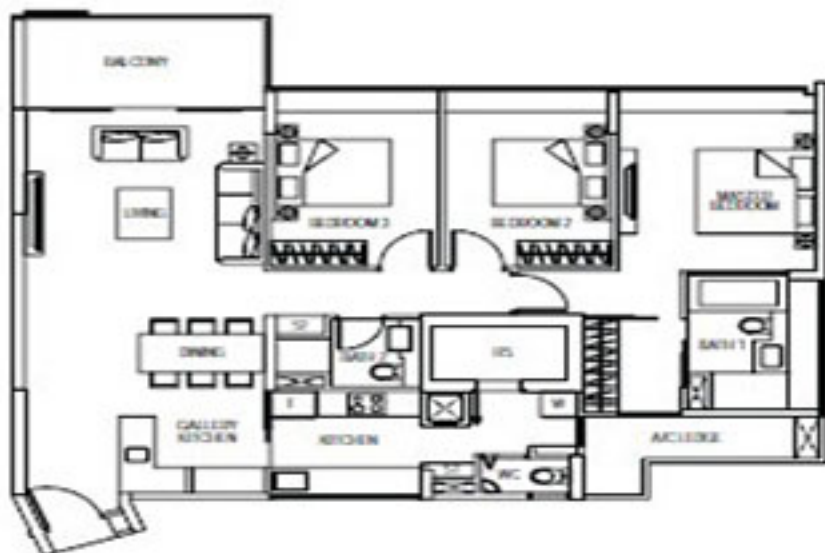


TYPE B

1,410 sq ft
#03-03 to #17-03



Three-bedroom



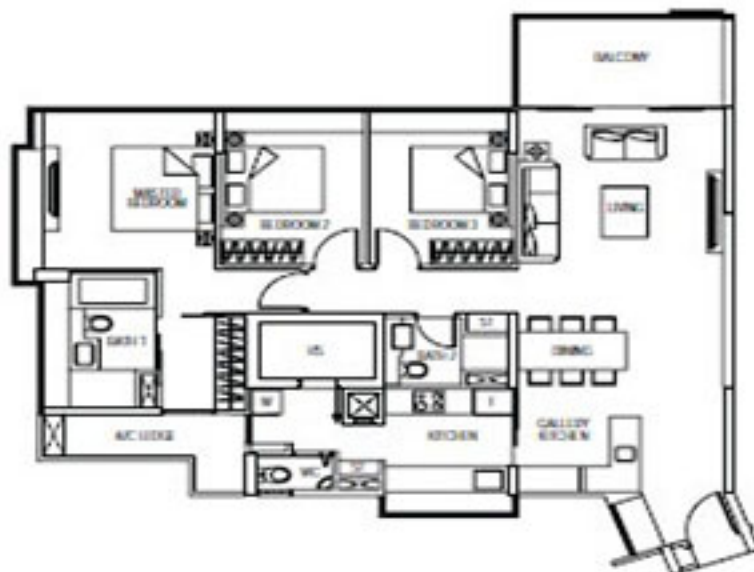
TYPE B1

1,432 sq ft
#03-06 to #17-06*



*#17-06 - balcony opens to sky with trex deck access

Three-bedroom



TYPE B2a

1,550 sq ft
#03-05

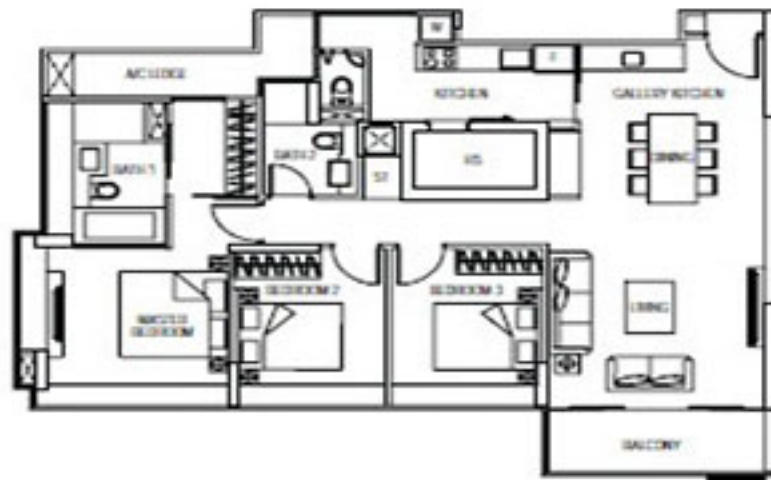
TYPE B2

1,442 sq ft
#04-05 to #17-05*



*#17-05 - Security opens to sq with trash area

Three-bedroom



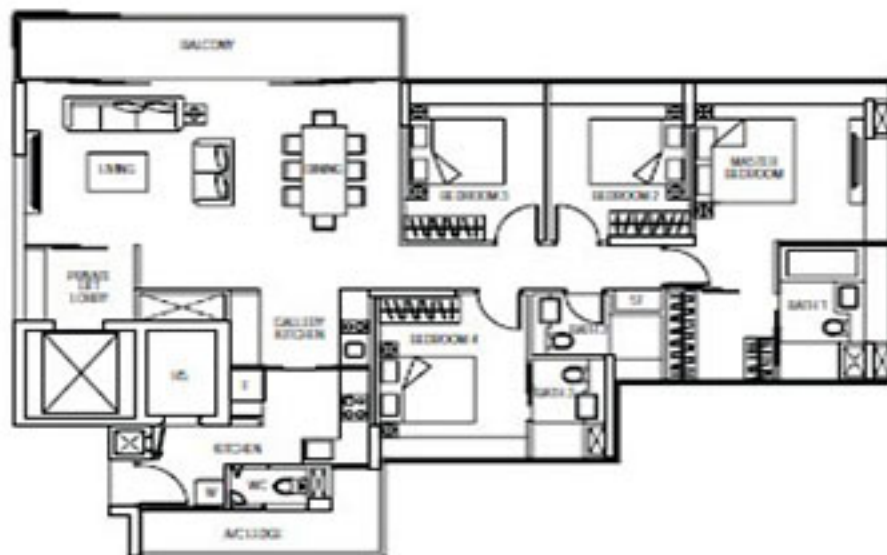
TYPE B3

1,335 sq ft
#03-04 to #17-04*



*#17-04 - Balcony opens to sky with median access

Four-bedroom



TYPE C1

1,711 sq ft
#04-02 to #10-02*



*#10-02 - Balcony opens to way with truss access

Four-bedroom+study



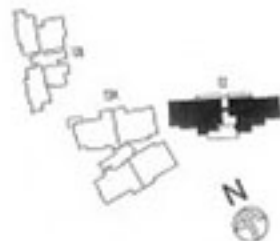
TYPE C2

1,664 sq ft

#04 01 to #18 01*



12 - PENTHOUSE UNIT PH1
19th STOREY #19-01 (3,466 sqft)



12A - PENTHOUSE UNIT PH2a
18th STOREY #18-06 (2,702 sqft)

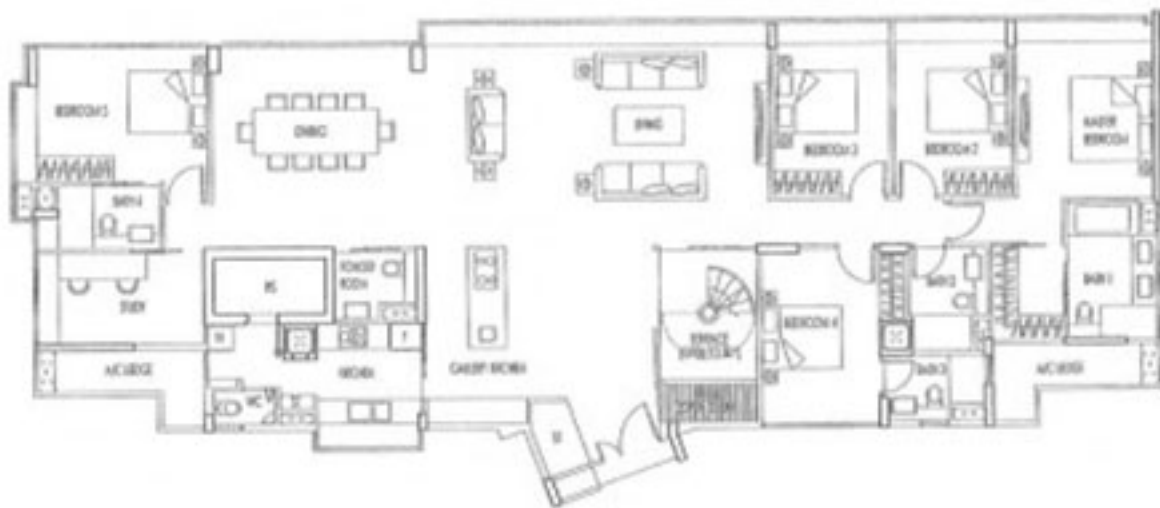
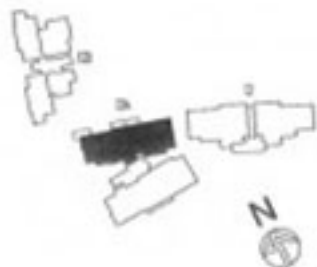


12A - PENTHOUSE UNIT PH2b
18th STOREY #18-03 (2,640 sqft)



12A - SKY VILLA PENTHOUSE (SVPH2a)

19th STOREY #19-06 (4,542 sqft)



12A - SKY VILLA PENTHOUSE (SVPH2b)

19th STOREY #19-03 (4,435 sqft)

