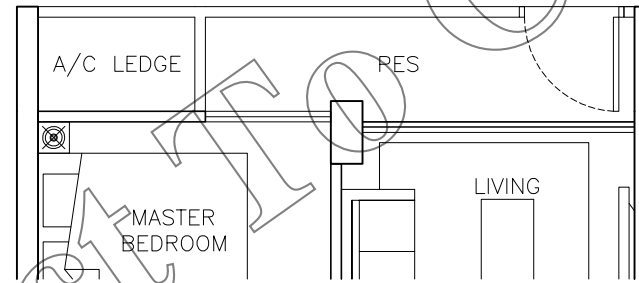


TYPE A1

SALEABLE AREA = 42.7 sqm(459.3 sqft)

1-BEDROOM

TOTAL NO. OF UNITS = 28

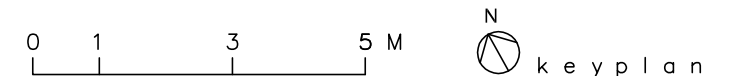
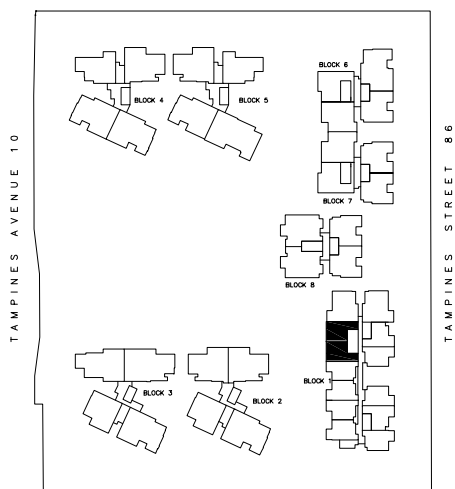


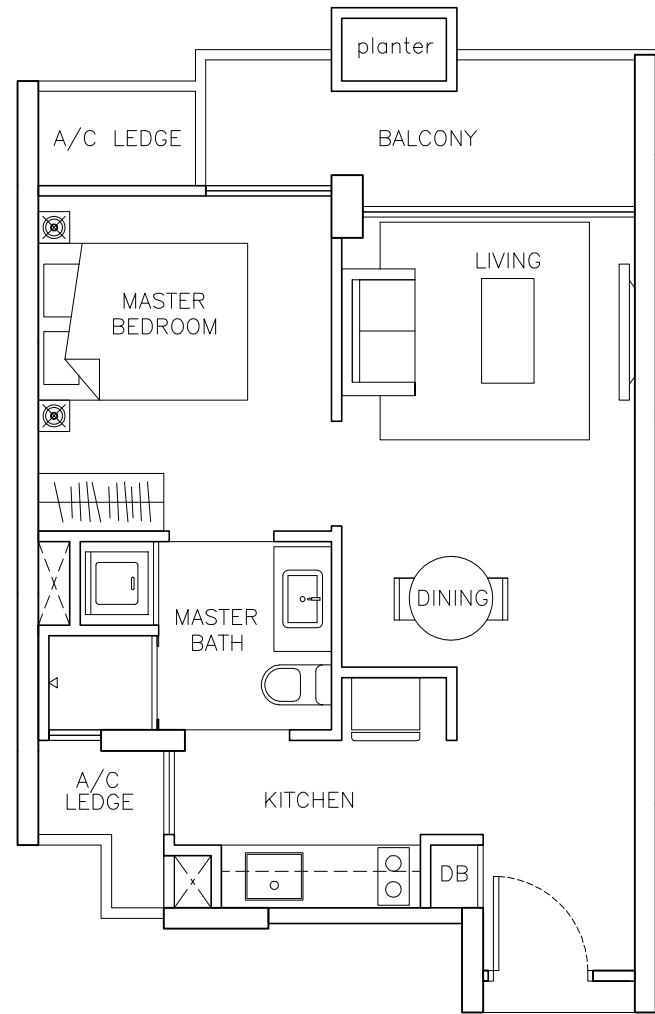
TYPE A1-P

SALEABLE AREA = 42.7 sqm (459.3 sqft)

1-BEDROOM

TOTAL NO. OF UNITS = 2

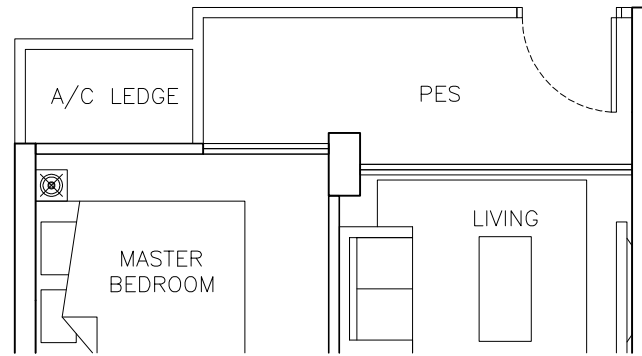




TYPE A2 (SHOWFLAT)

SALEABLE AREA = 49.2 sqm (529.5 sqft)

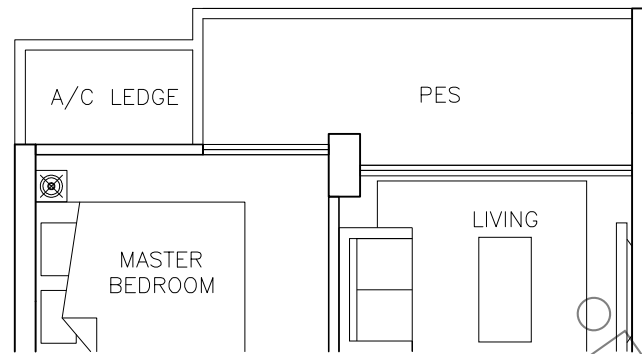
1-BEDROOM
TOTAL NO. OF UNITS = 35



TYPE A2-P

SALEABLE AREA = 48.7 sqm (524.3 sqft)

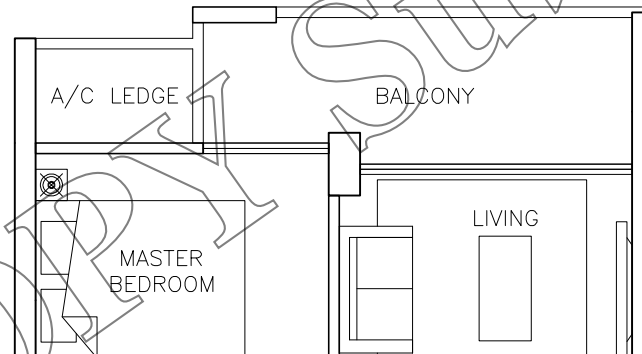
1-BEDROOM
TOTAL NO. OF UNITS = 4



TYPE A2-PA

SALEABLE AREA = 48.7 sqm (524.3 sqft)

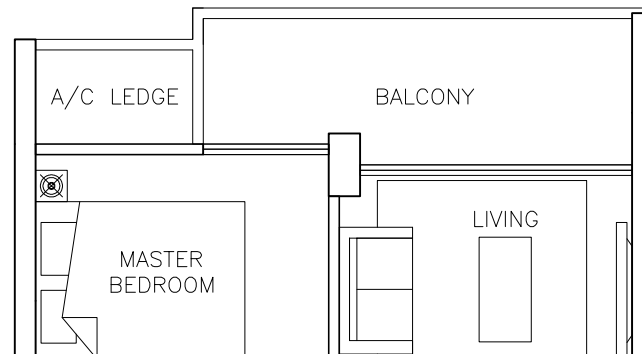
1-BEDROOM
TOTAL NO. OF UNITS = 3



TYPE A2a

SALEABLE AREA = 48.7 sqm (524.3 sqft)

1-BEDROOM
TOTAL NO. OF UNITS = 28



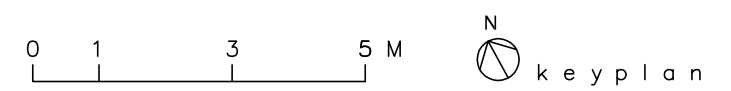
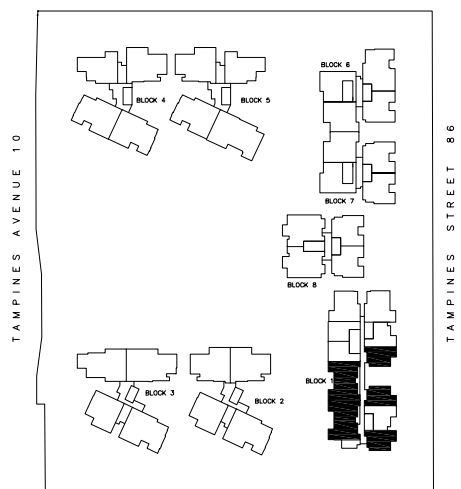
TYPE A2b

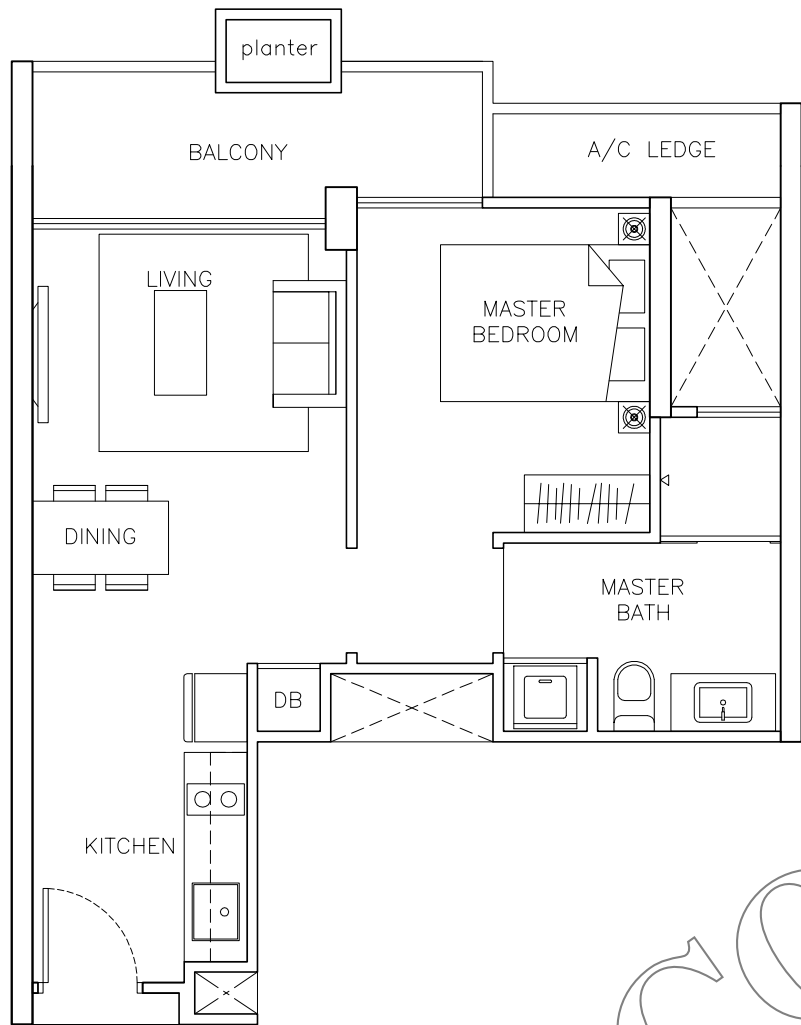
SALEABLE AREA = 48.7 sqm (524.3 sqft)

1-BEDROOM
TOTAL NO. OF UNITS = 35

DRAFT

Subject To Change



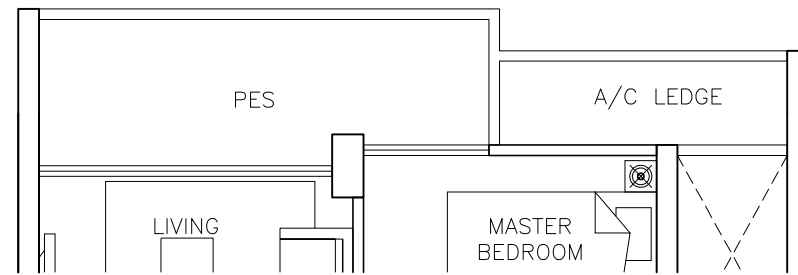


TYPE A3

SALEABLE AREA = 49.4 sqm (531.4 sqft)

1-BEDROOM

TOTAL NO. OF UNITS = 10

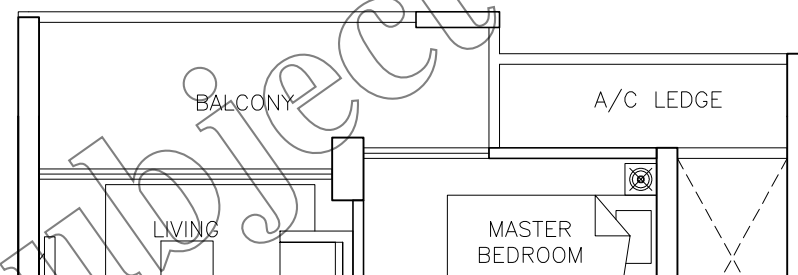


TYPE A3-PA

SALEABLE AREA = 48.8 sqm (525.0 sqft)

1-BEDROOM

TOTAL NO. OF UNITS = 2

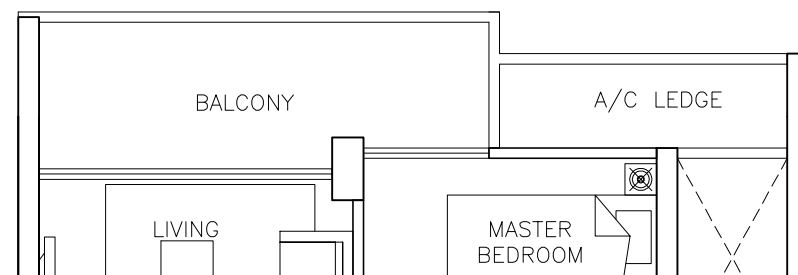


TYPE A3a

SALEABLE AREA = 48.8 sqm (525.0 sqft)

1-BEDROOM

TOTAL NO. OF UNITS = 8

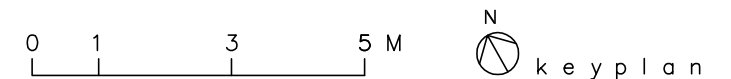
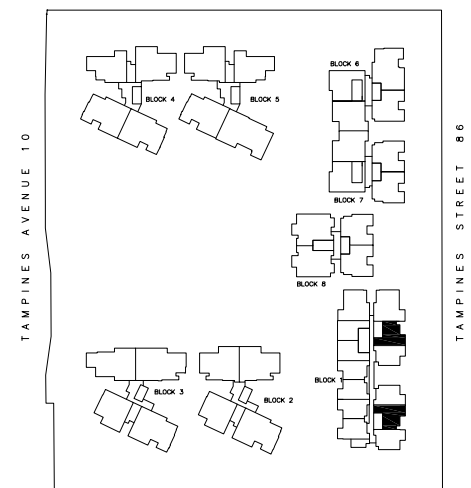


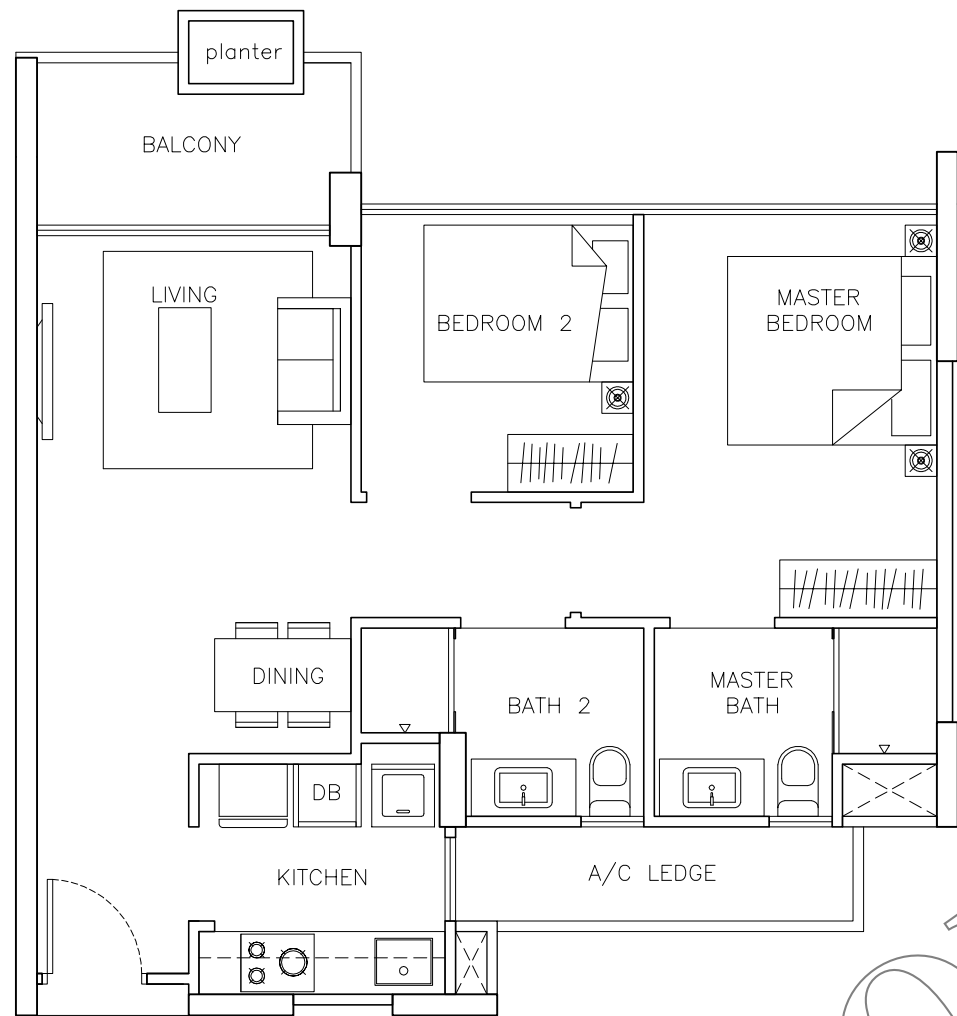
TYPE A3b

SALEABLE AREA = 48.8 sqm (525.0 sqft)

1-BEDROOM

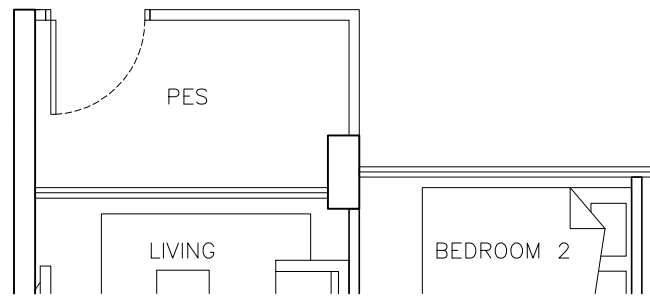
TOTAL NO. OF UNITS = 10





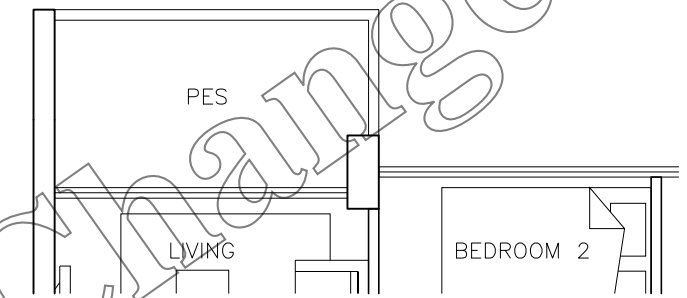
TYPE B1 (SHOWFLAT)

SALEABLE AREA = 68.6 sqm (738.6 sqft)
 2-BEDROOM
 TOTAL NO. OF UNITS = 10



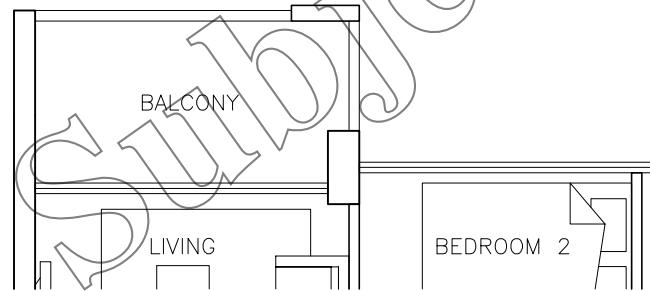
TYPE B1-P

SALEABLE AREA = 67.3 sqm (724.2 sqft)
 2-BEDROOM
 TOTAL NO. OF UNITS = 1



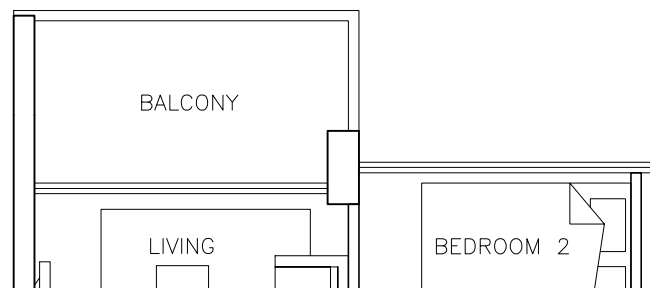
TYPE B1-PA

SALEABLE AREA = 67.3 sqm (724.2 sqft)
 2-BEDROOM
 TOTAL NO. OF UNITS = 1



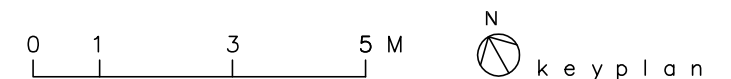
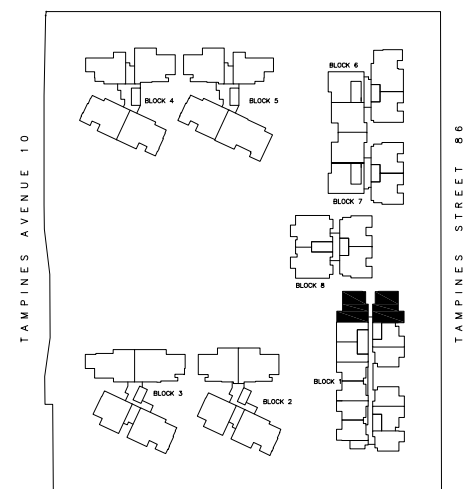
TYPE B1a

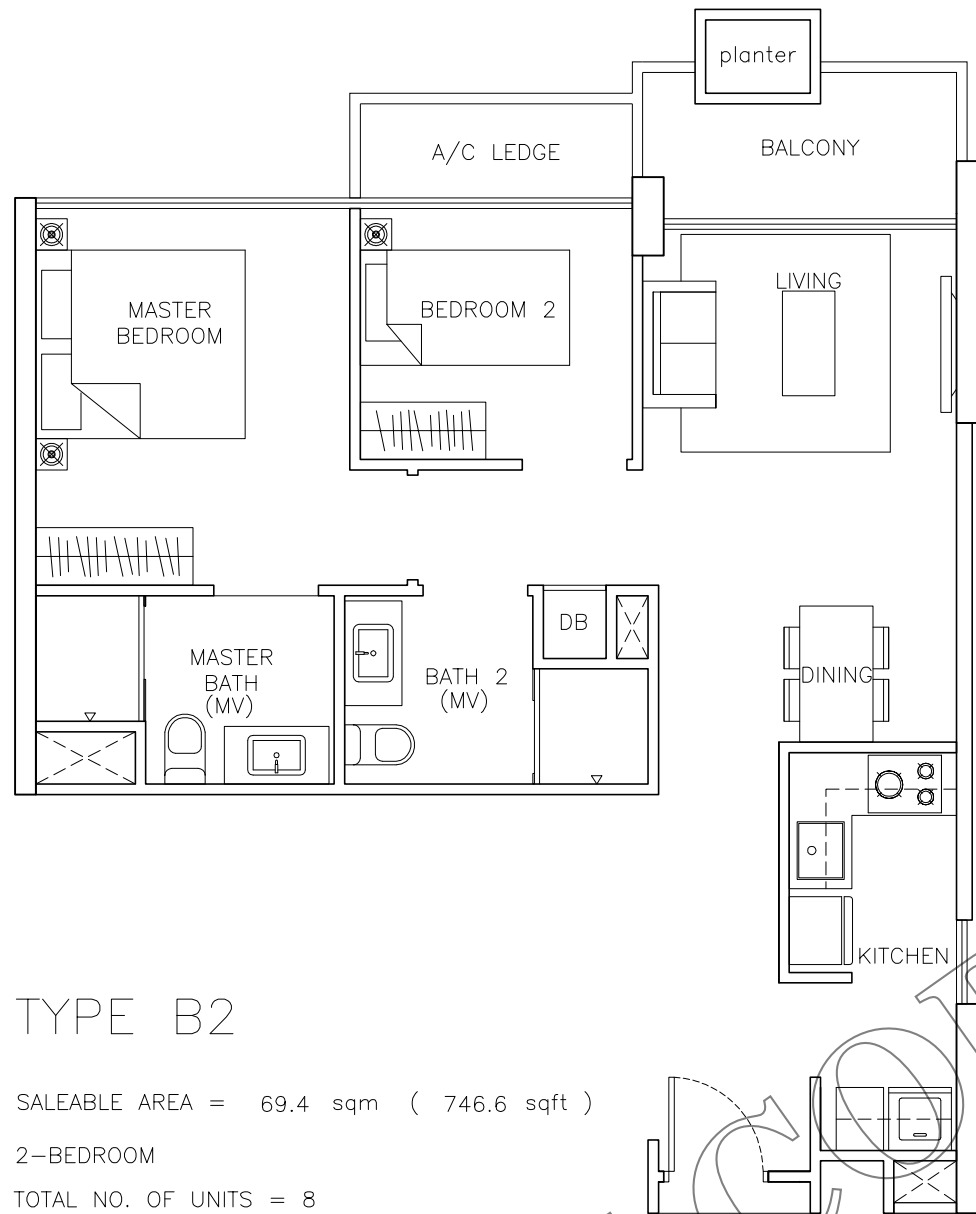
SALEABLE AREA = 67.3 sqm (724.2 sqft)
 2-BEDROOM
 TOTAL NO. OF UNITS = 8



TYPE B1b

SALEABLE AREA = 67.3 sqm (724.2 sqft)
 2-BEDROOM
 TOTAL NO. OF UNITS = 9



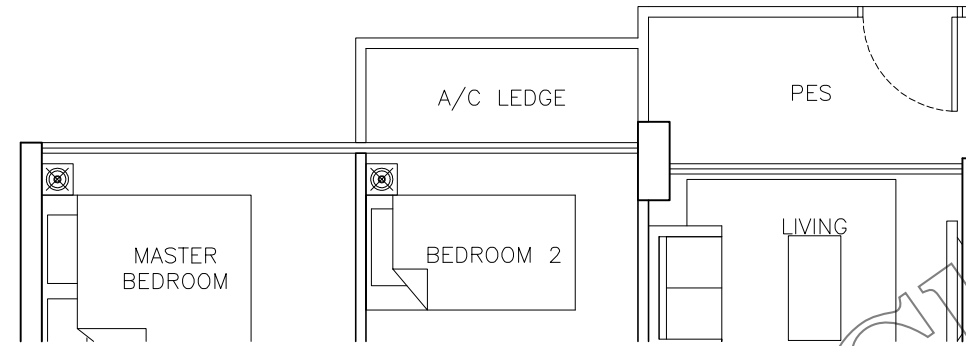


TYPE B2

SALEABLE AREA = 69.4 sqm (746.6 sqft)

2-BEDROOM

TOTAL NO. OF UNITS = 8

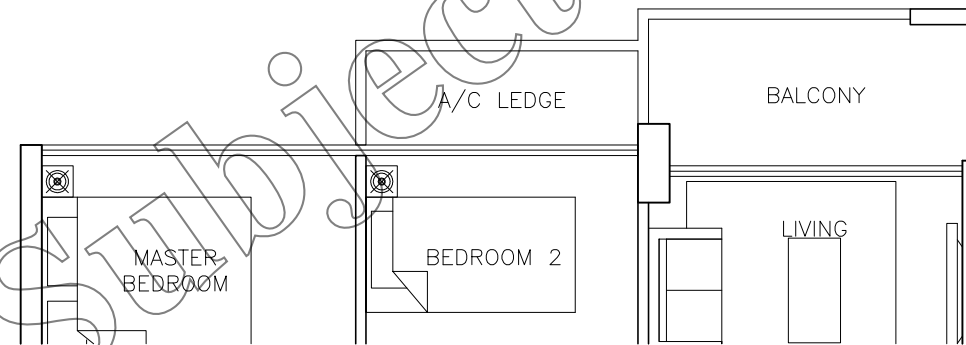


TYPE B2-P

SALEABLE AREA = 68.8 sqm (740.1 sqft)

2-BEDROOM

TOTAL NO. OF UNITS = 2

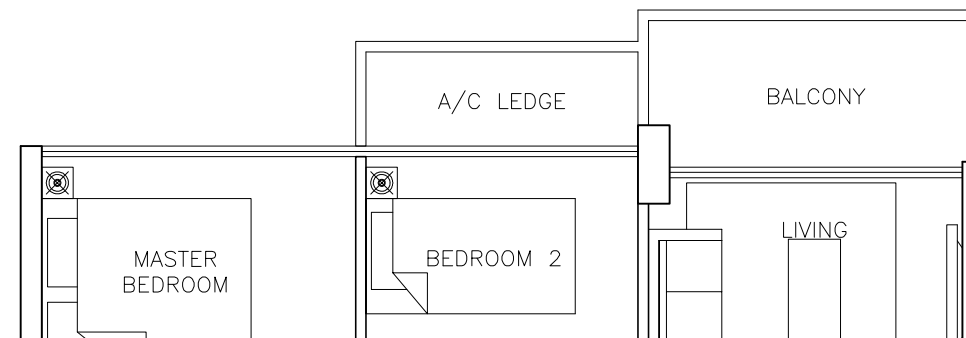


TYPE B2a

SALEABLE AREA = 68.8 sqm (740.1 sqft)

2-BEDROOM

TOTAL NO. OF UNITS = 8

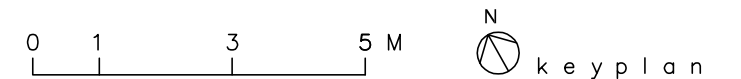
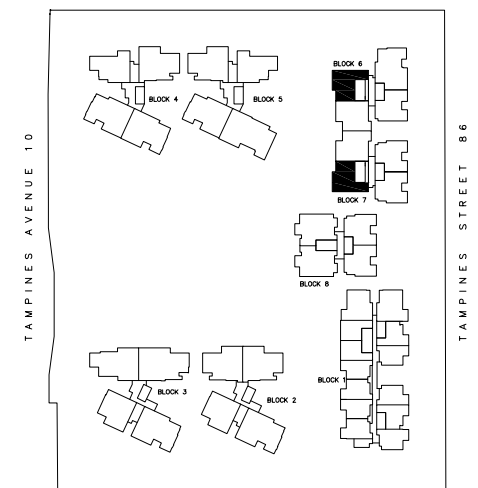


TYPE B2b

SALEABLE AREA = 68.8 sqm (740.1 sqft)

2-BEDROOM

TOTAL NO. OF UNITS = 11



unit plans

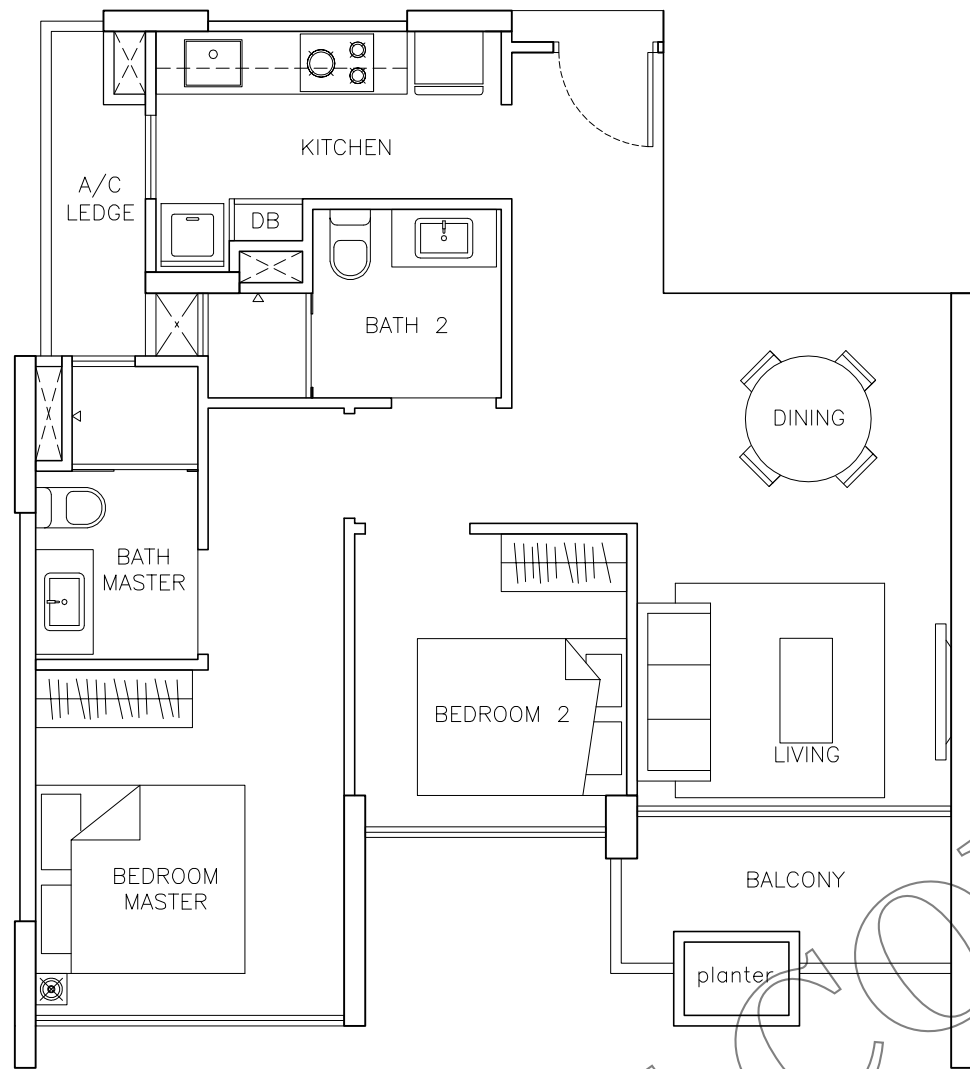
SCALE 1: 100

AGA ARCHITECTS PTE LTD
 PROPOSED CONDOMINIUM AT TAMPINES AVENUE 10
 09 DECEMBER 2013

DRAFT

COPY

Subject To Change

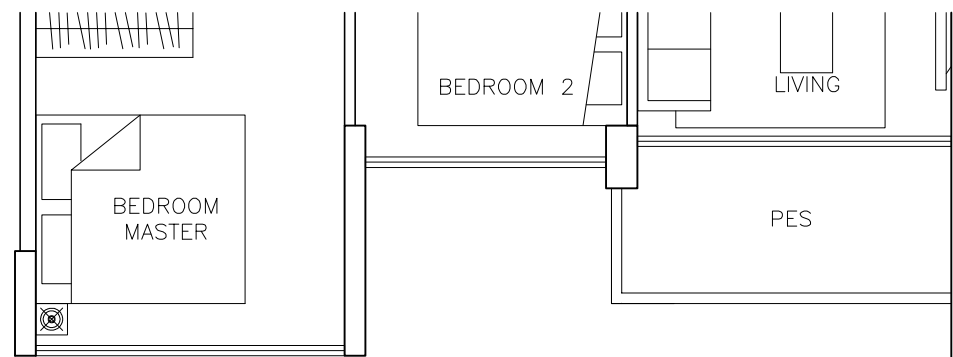


TYPE B3

SALEABLE AREA = 71.8 sqm (772.9 sqft)

2-BEDROOM

TOTAL NO. OF UNITS = 4

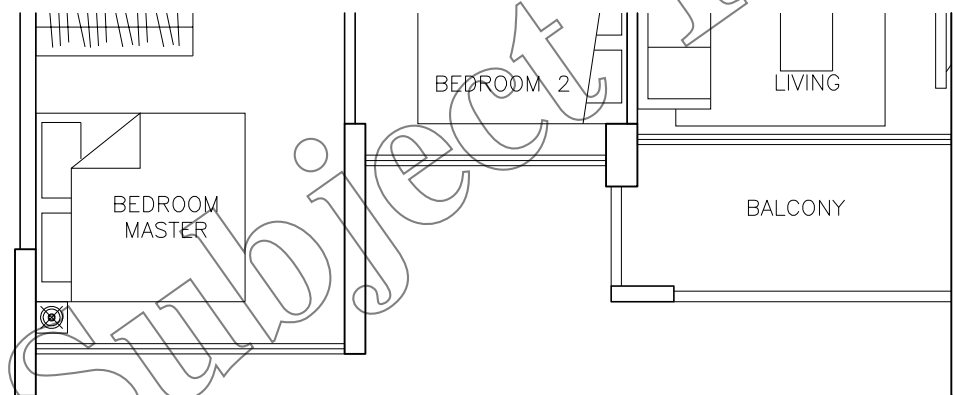


TYPE B3-PA

SALEABLE AREA = 70.9 sqm (763.4 sqft)

2-BEDROOM

TOTAL NO. OF UNITS = 1

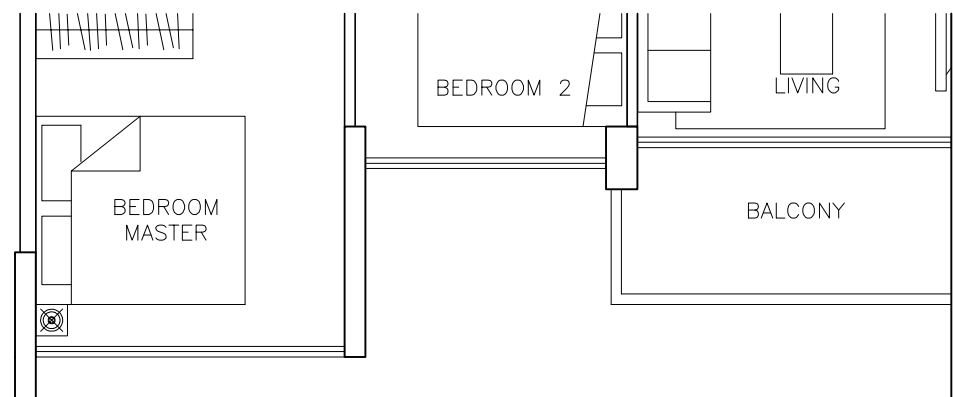


TYPE B3a

SALEABLE AREA = 70.9 sqm (763.4 sqft)

2-BEDROOM

TOTAL NO. OF UNITS = 4

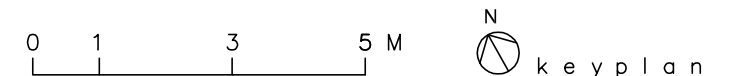


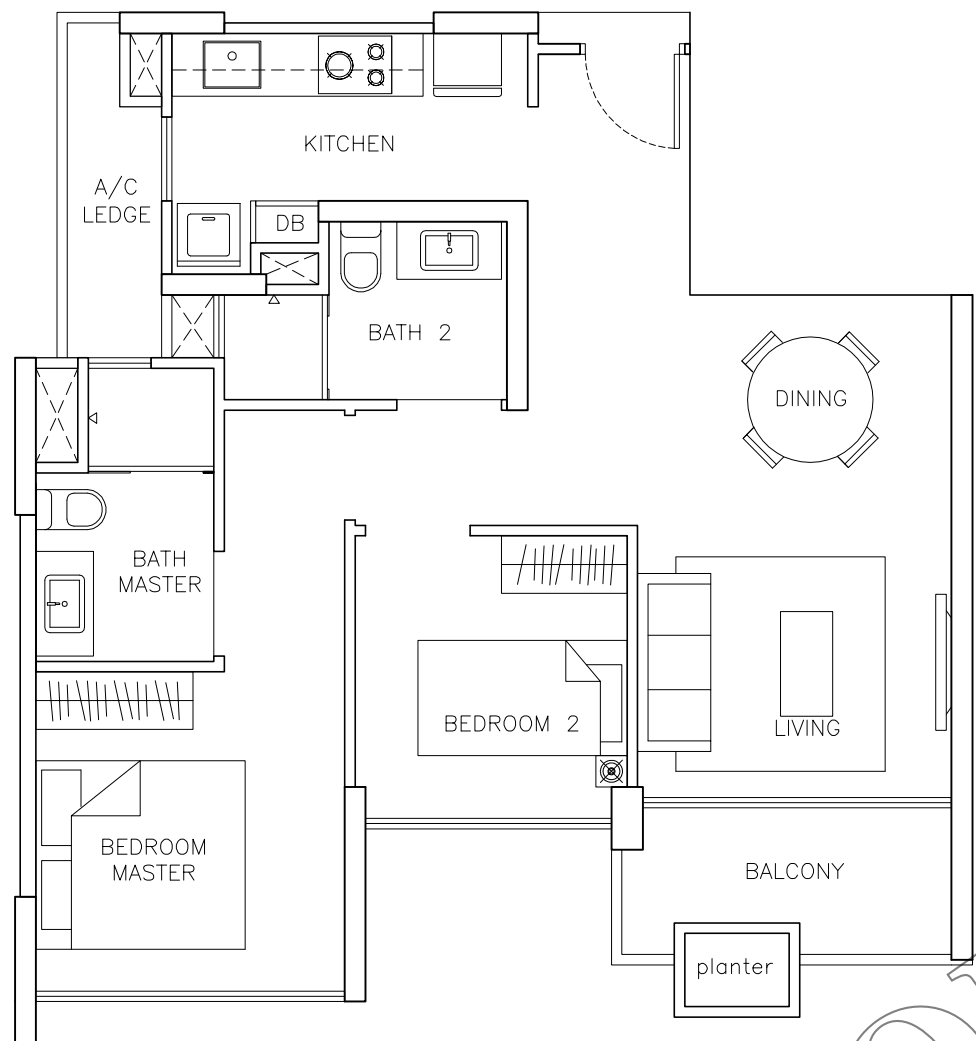
TYPE B3b

SALEABLE AREA = 70.9 sqm (763.4 sqft)

2-BEDROOM

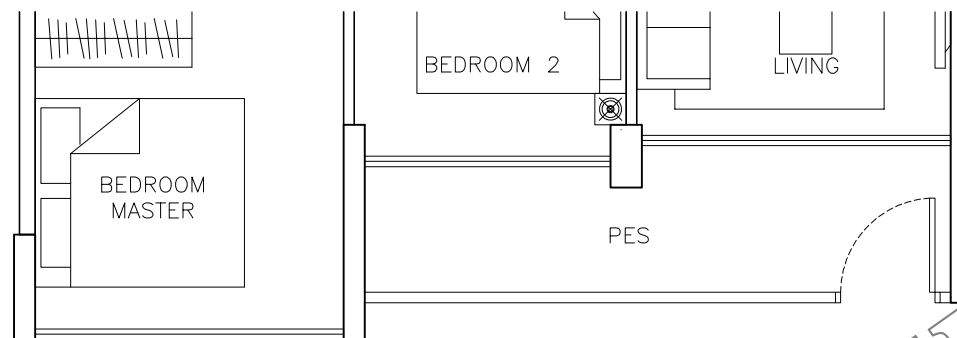
TOTAL NO. OF UNITS = 5





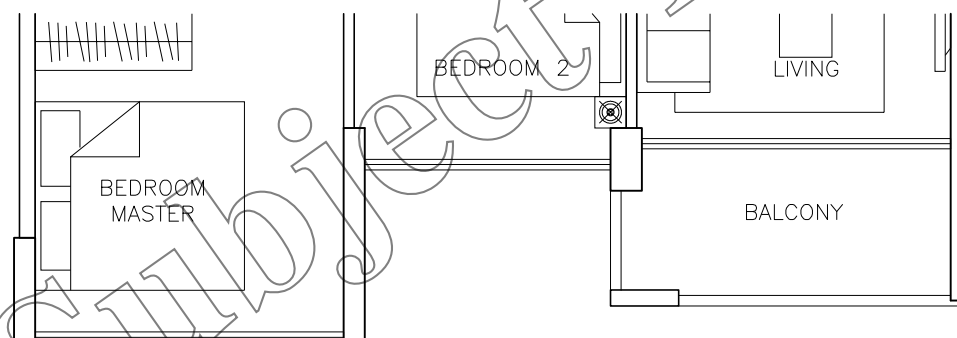
TYPE B4

SALEABLE AREA = 70.2 sqm (755.7 sqft)
 2-BEDROOM
 TOTAL NO. OF UNITS = 17



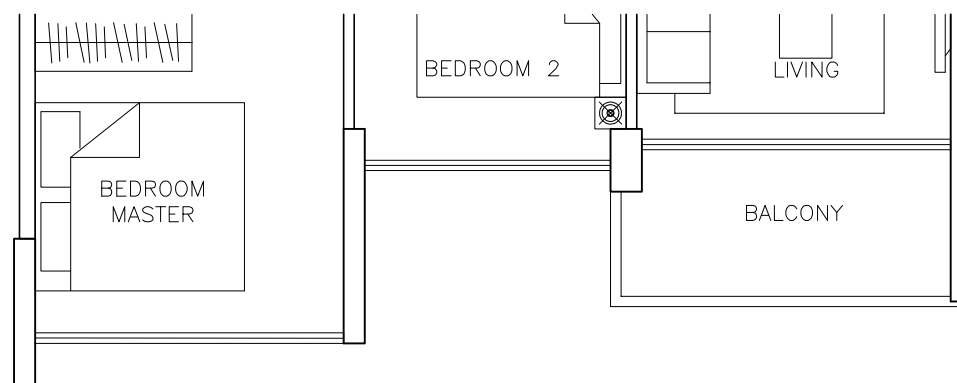
TYPE B4-P

SALEABLE AREA = 72.8 sqm (783.6 sqft)
 2-BEDROOM
 TOTAL NO. OF UNITS = 2



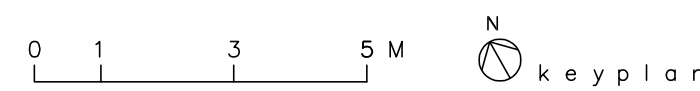
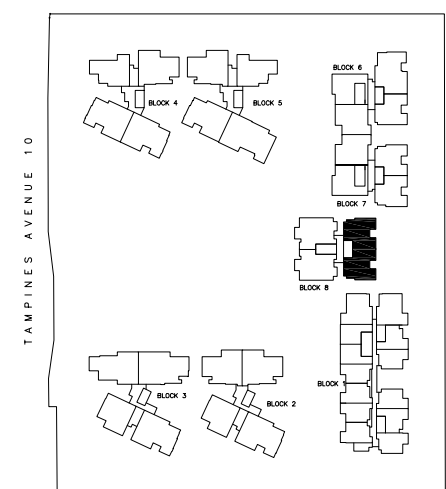
TYPE B4a

SALEABLE AREA = 69.6 sqm (749.3 sqft)
 2-BEDROOM
 TOTAL NO. OF UNITS = 16



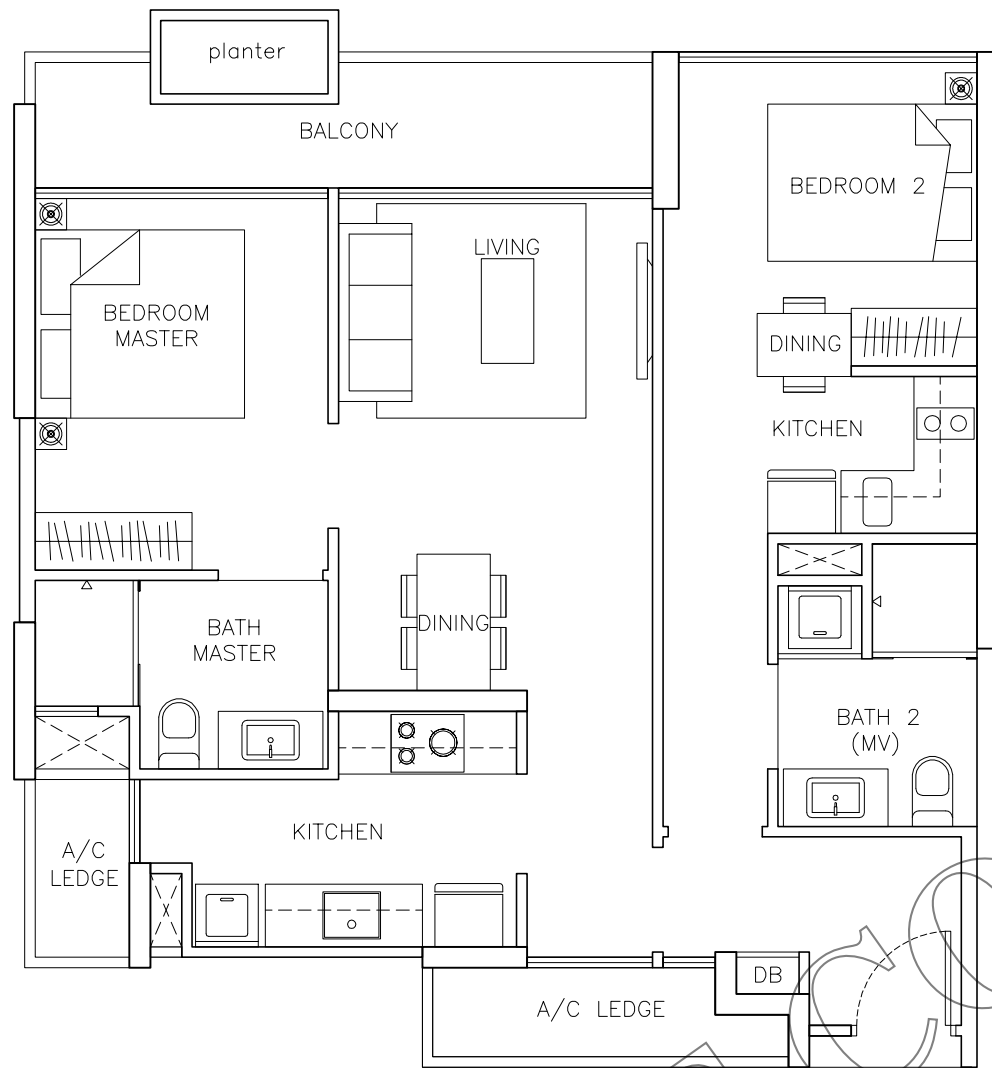
TYPE B4b

SALEABLE AREA = 69.6 sqm (749.3 sqft)
 2-BEDROOM
 TOTAL NO. OF UNITS = 20



DRAFT COPY

Subject To Change

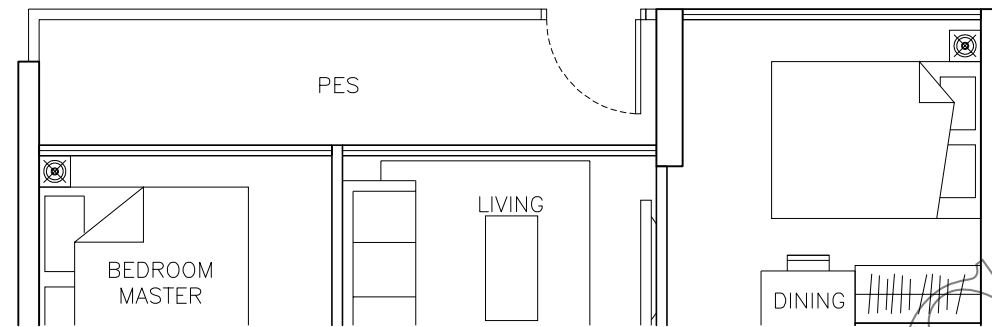


TYPE B5 (DK)

SALEABLE AREA = 84.5 sqm (909.2 sqft)

2-BEDROOM

TOTAL NO. OF UNITS = 12

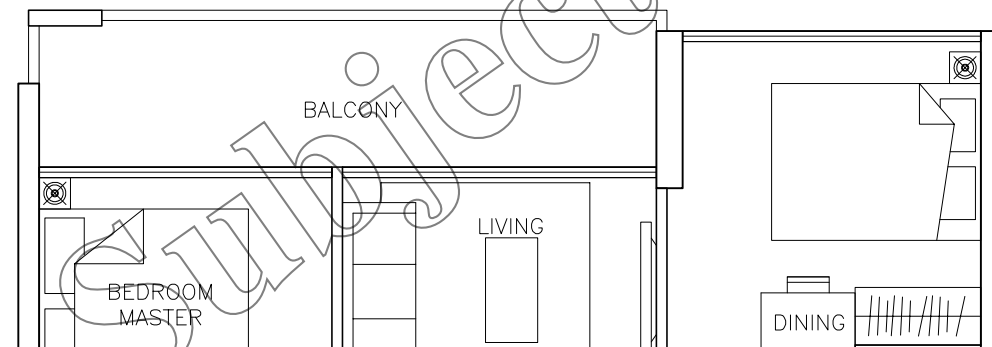


TYPE B5-P(DK)

SALEABLE AREA = 83.8 sqm (901.5 sqft)

2-BEDROOM

TOTAL NO. OF UNITS = 3

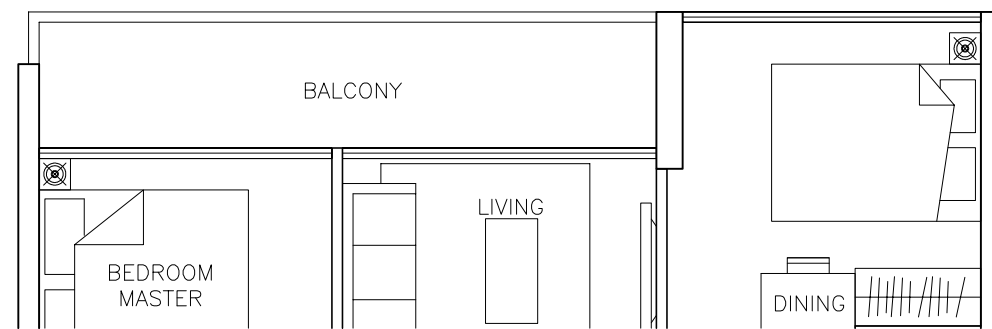


TYPE B5a(DK)

SALEABLE AREA = 85.0 sqm (914.4 sqft)

2-BEDROOM

TOTAL NO. OF UNITS = 13

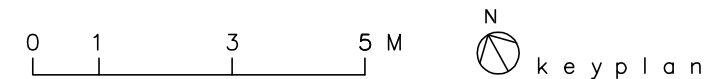
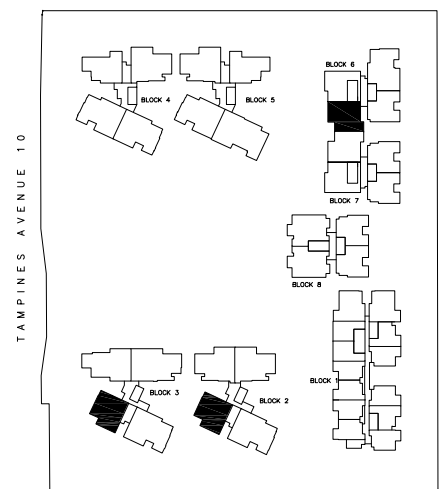


TYPE B5b(DK)

SALEABLE AREA = 83.8 sqm (901.5 sqft)

2-BEDROOM

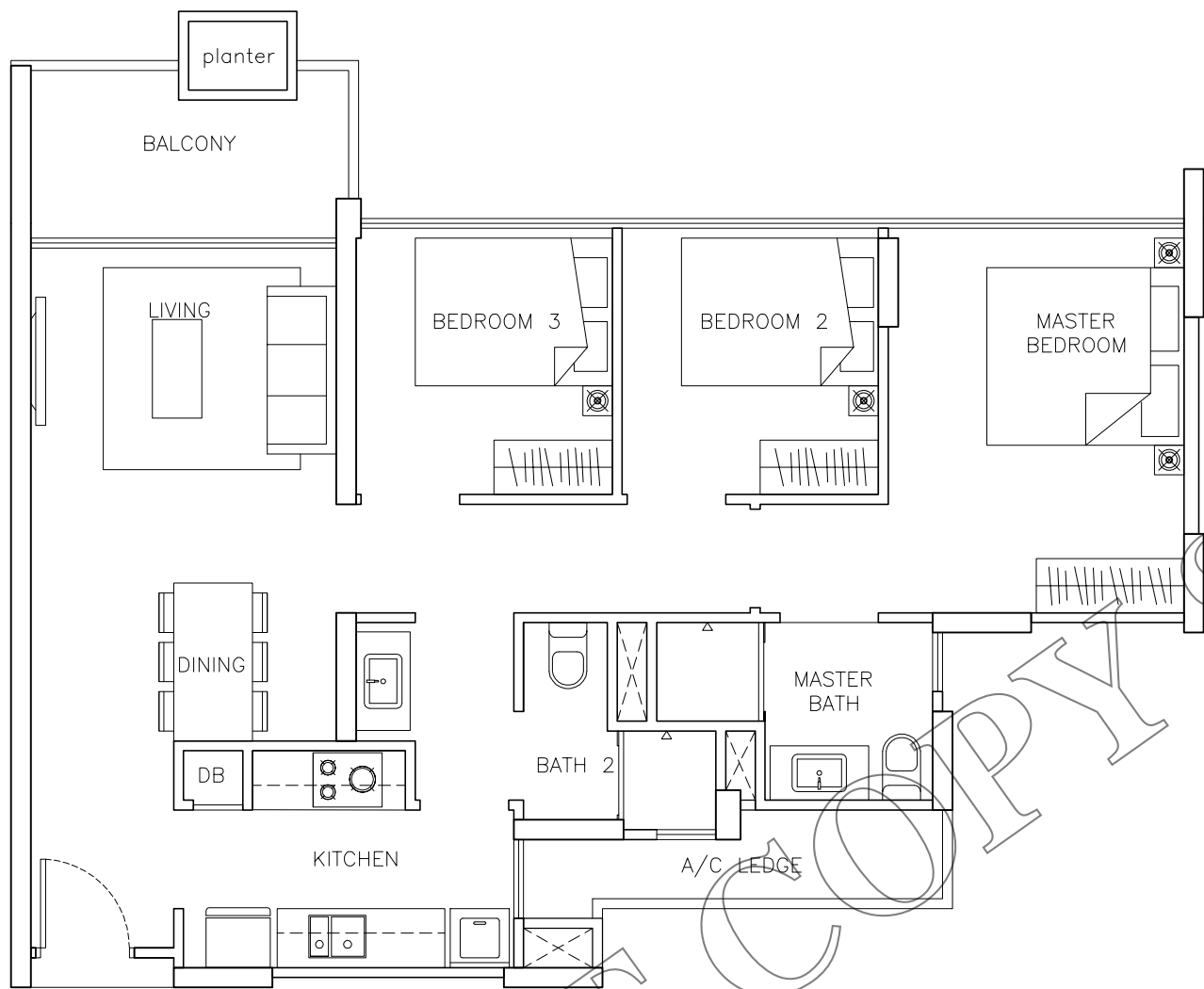
TOTAL NO. OF UNITS = 17



unit plans

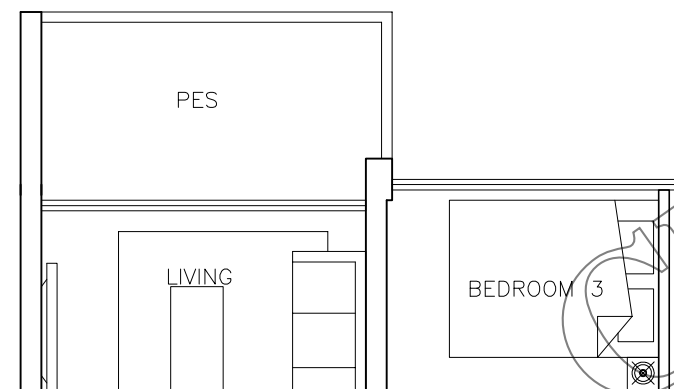
SCALE 1: 100

AGA ARCHITECTS PTE LTD
PROPOSED CONDOMINIUM AT TAMPINES AVENUE 10
09 DECEMBER 2013



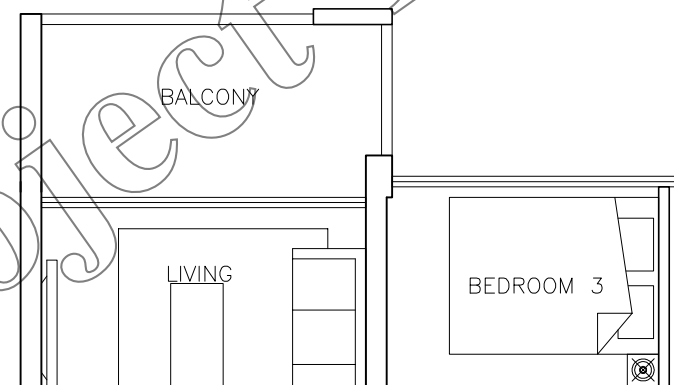
TYPE C1

SALEABLE AREA = 85.0 sqm (915.2 sqft)
 3-BEDROOM
 TOTAL NO. OF UNITS = 8



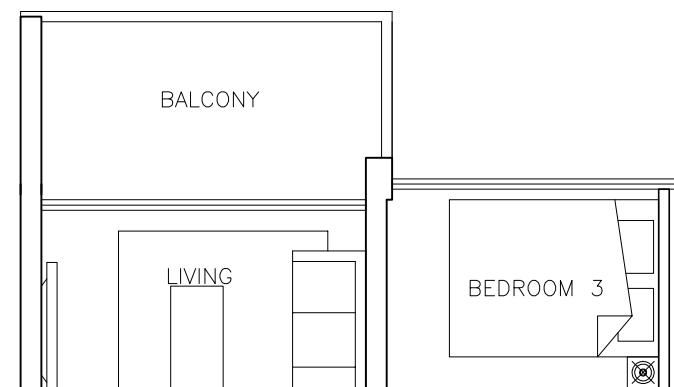
TYPE C1-P

SALEABLE AREA = 84.4 sqm (908.7 sqft)
 3-BEDROOM
 TOTAL NO. OF UNITS = 2



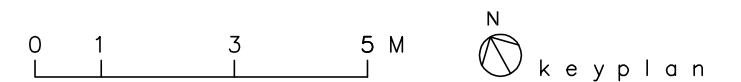
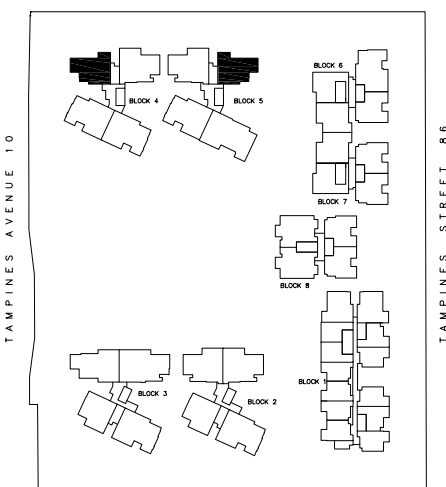
TYPE C1a

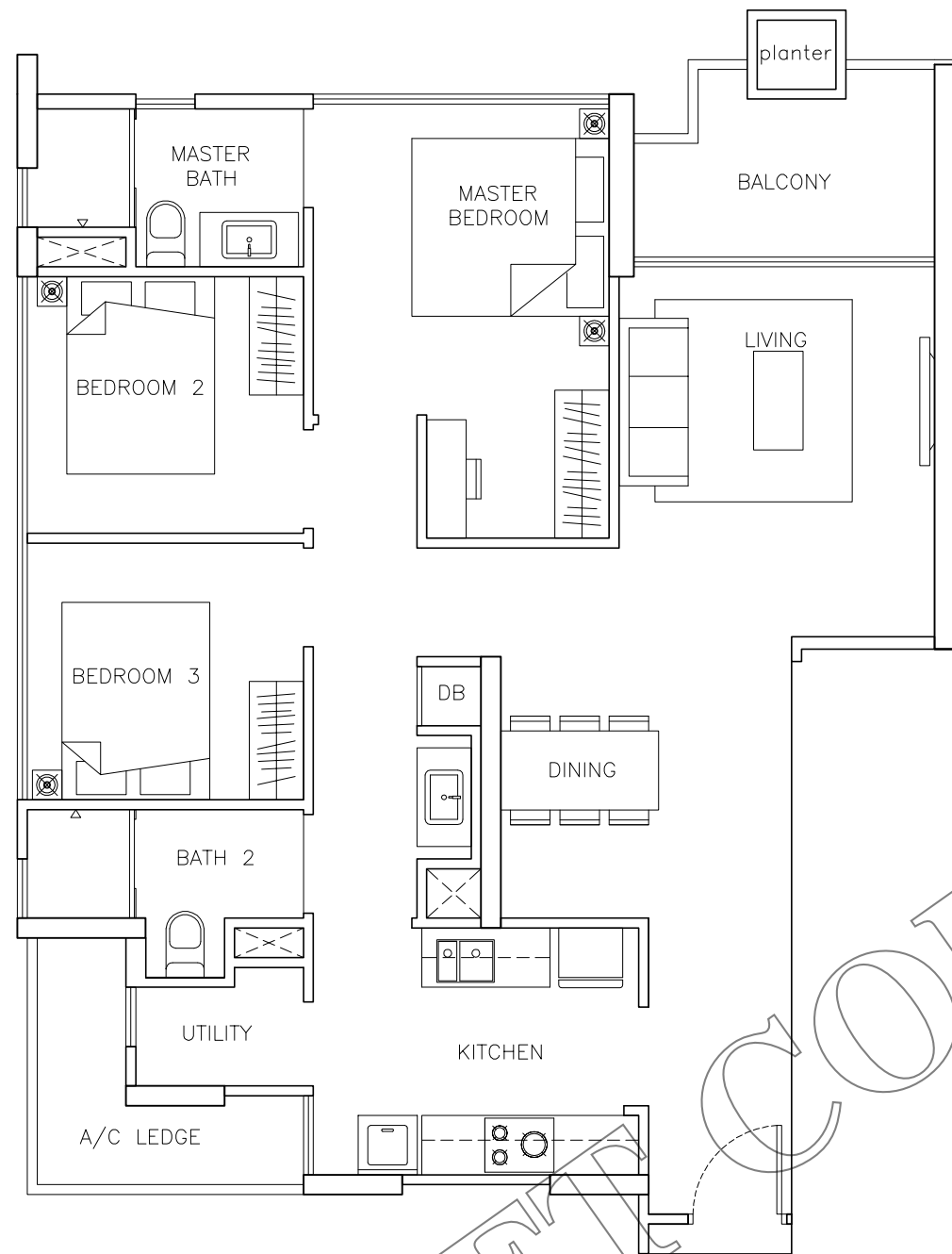
SALEABLE AREA = 84.4 sqm (908.7 sqft)
 3-BEDROOM
 TOTAL NO. OF UNITS = 8



TYPE C1b

SALEABLE AREA = 84.4 sqm (908.7 sqft)
 3-BEDROOM
 TOTAL NO. OF UNITS = 10



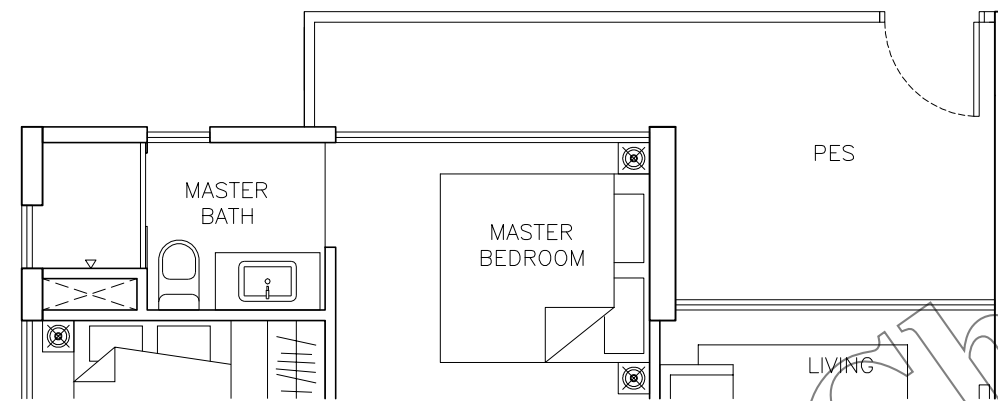


TYPE C2

SALEABLE AREA = 96.8 sqm (1,042.2sqft)

3-BEDROOM

TOTAL NO. OF UNITS = 8

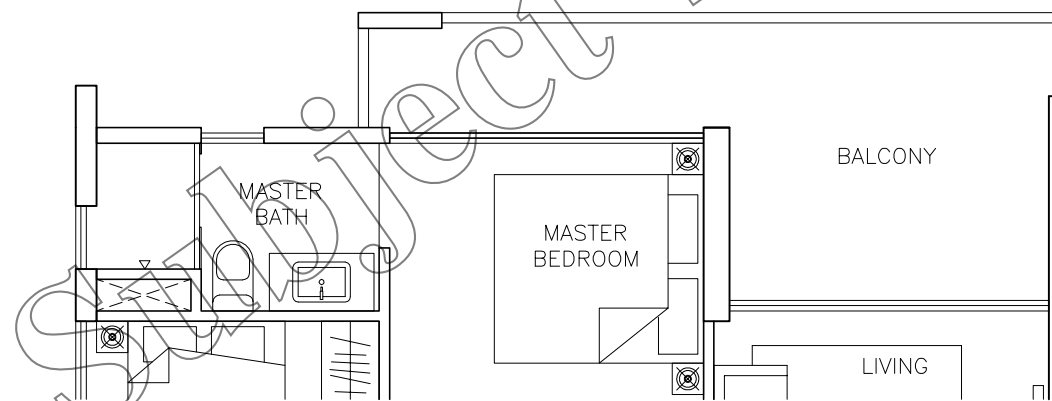


TYPE C2-P

SALEABLE AREA = 103.2 sqm (1,110.5 sqft)

3-BEDROOM

TOTAL NO. OF UNITS = 2



TYPE C2a

SALEABLE AREA = 103.2 sqm (1,110.5 sqft)

3-BEDROOM

TOTAL NO. OF UNITS = 8

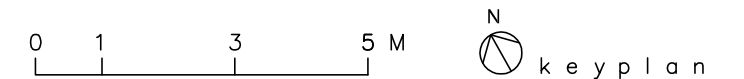
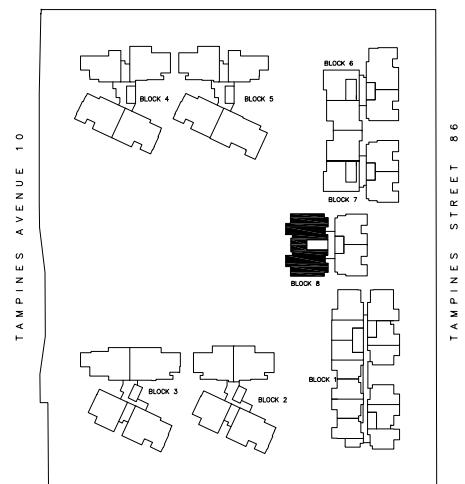


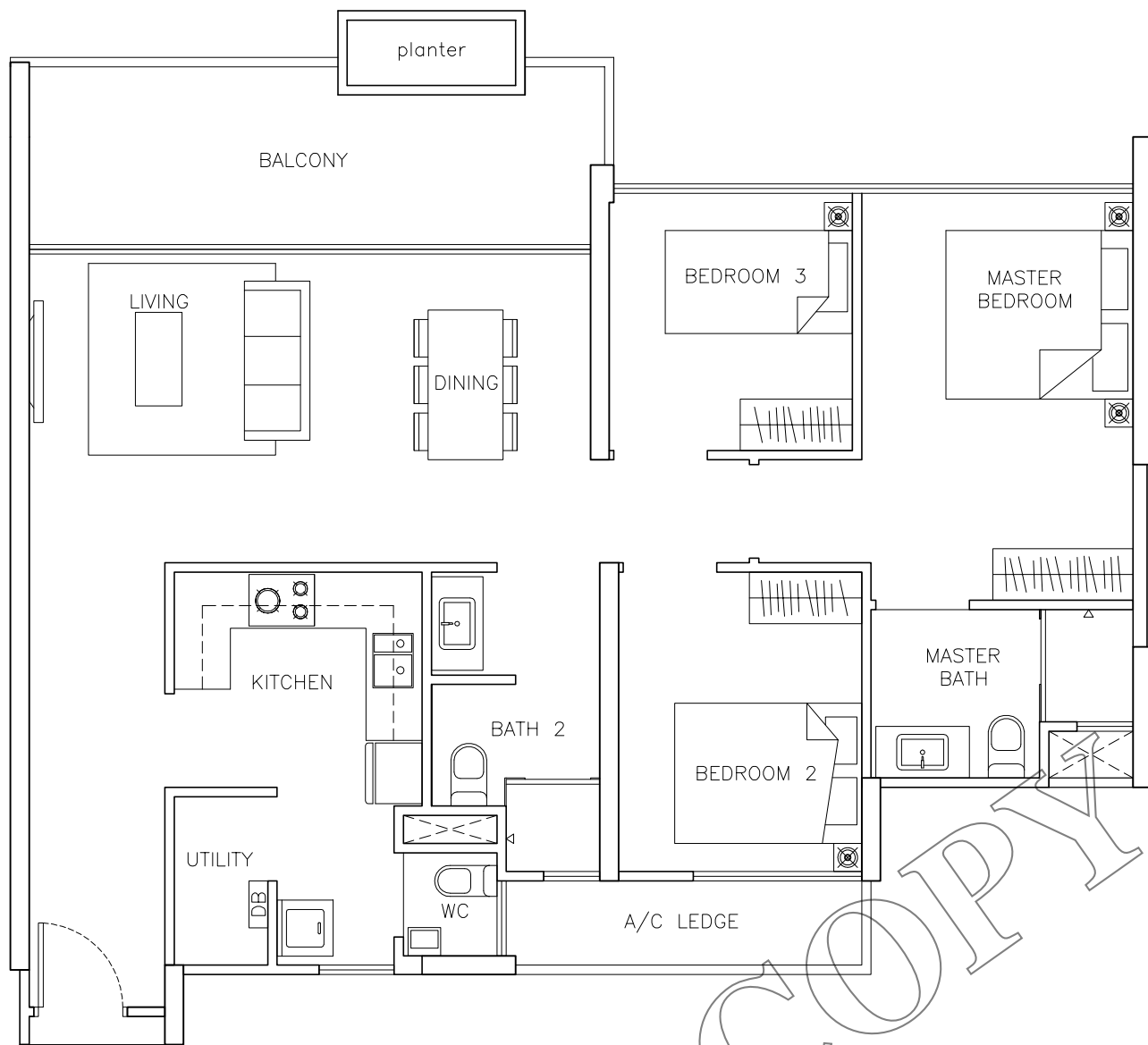
TYPE C2b

SALEABLE AREA = 103.2 sqm (1,110.5sqft)

3-BEDROOM

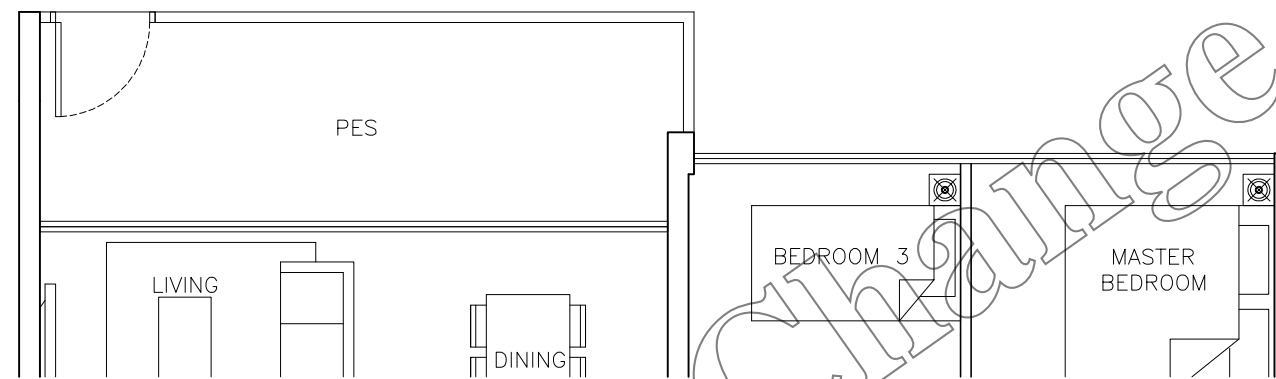
TOTAL NO. OF UNITS = 10





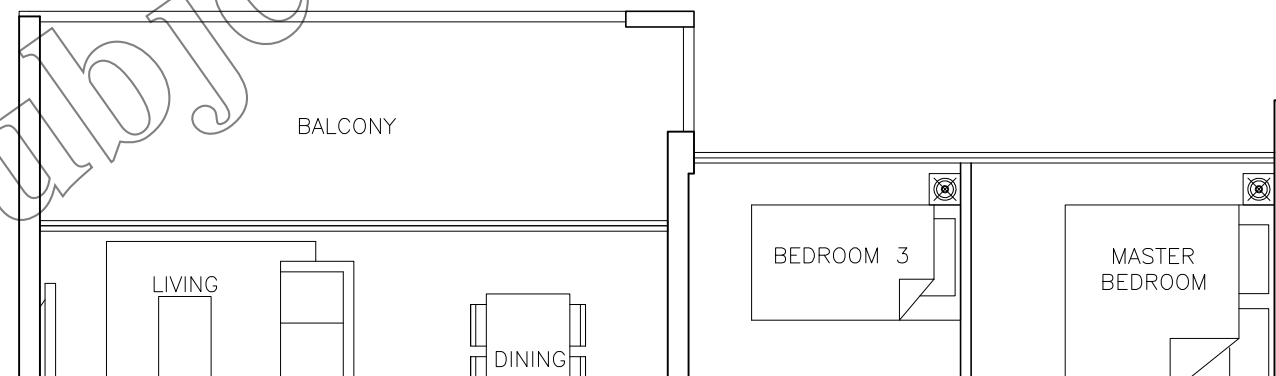
TYPE C3

SALEABLE AREA = 105.1 sqm (1,131.1 sqft)
 3-BEDROOM
 TOTAL NO. OF UNITS = 20



TYPE C3-P

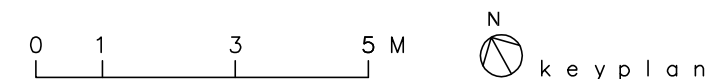
SALEABLE AREA = 104.1 sqm(1,120.3 sqft)
 3-BEDROOM
 TOTAL NO. OF UNITS = 5

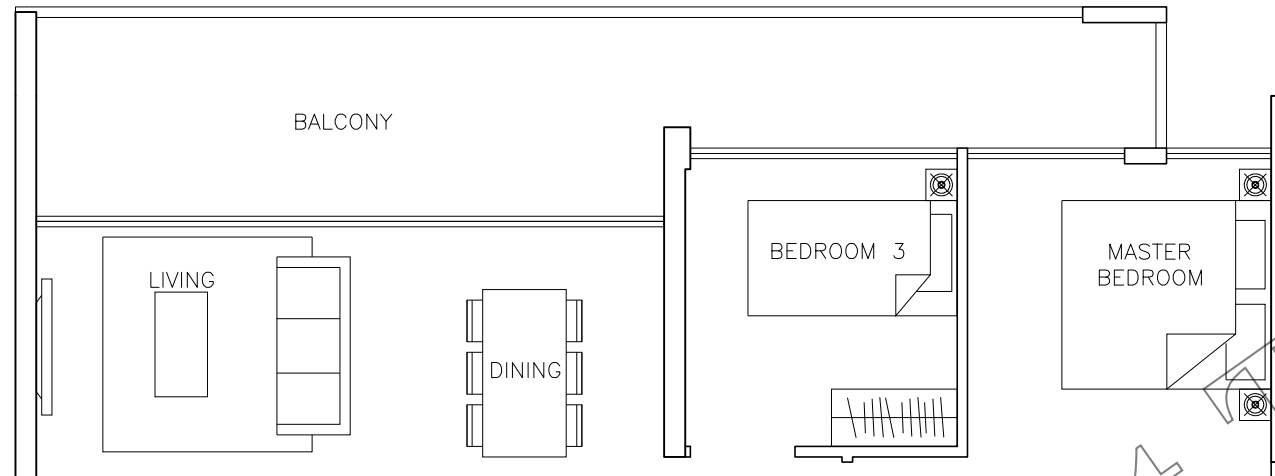


TYPE C3a

SALEABLE AREA = 104.1 sqm(1,120.3 sqft)
 3-BEDROOM
 TOTAL NO. OF UNITS = 12

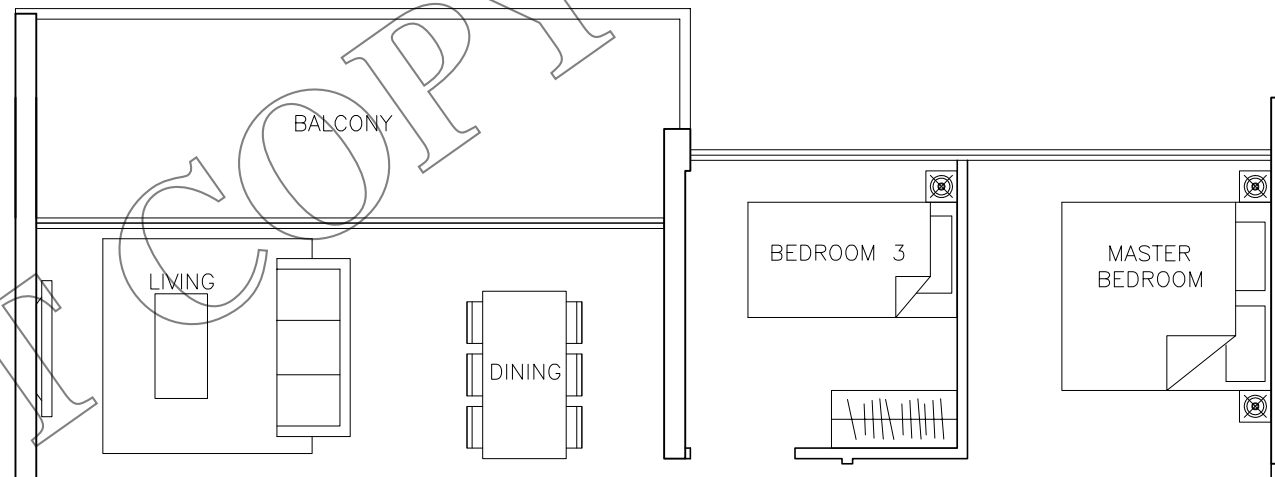
DRAFT





TYPE C3b

SALEABLE AREA = 111.0 sqm(1,194.6 sqft)
 3-BEDROOM
 TOTAL NO. OF UNITS = 8

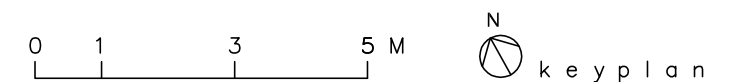
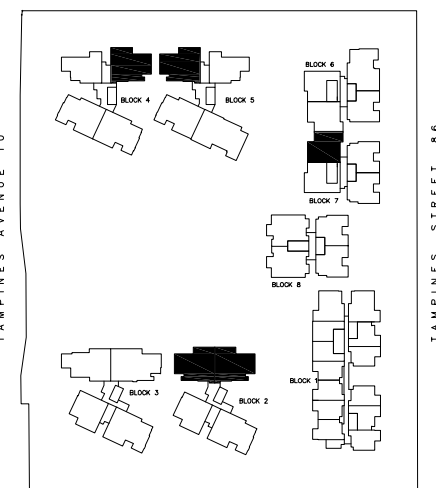


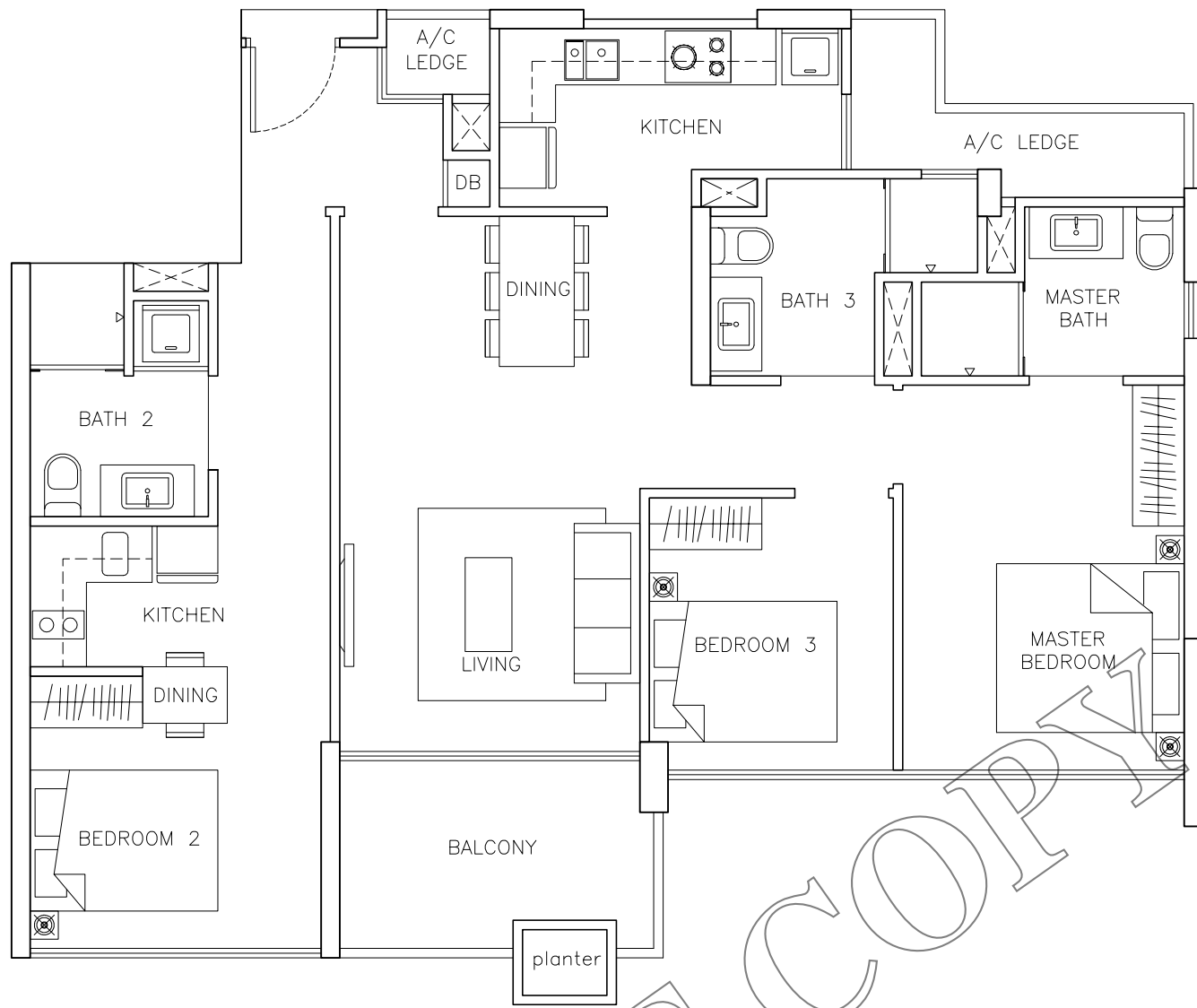
TYPE C3c

SALEABLE AREA = 104.1 sqm(1,120.3 sqft)
 3-BEDROOM
 TOTAL NO. OF UNITS = 25

DRAFT

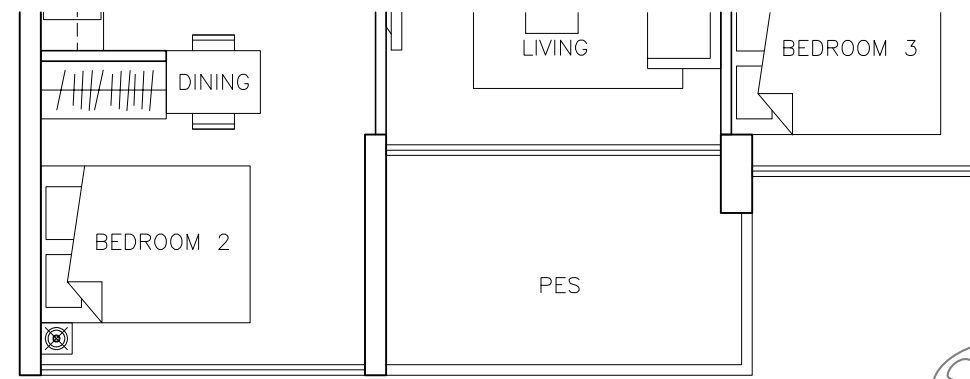
COPY Subject to Change





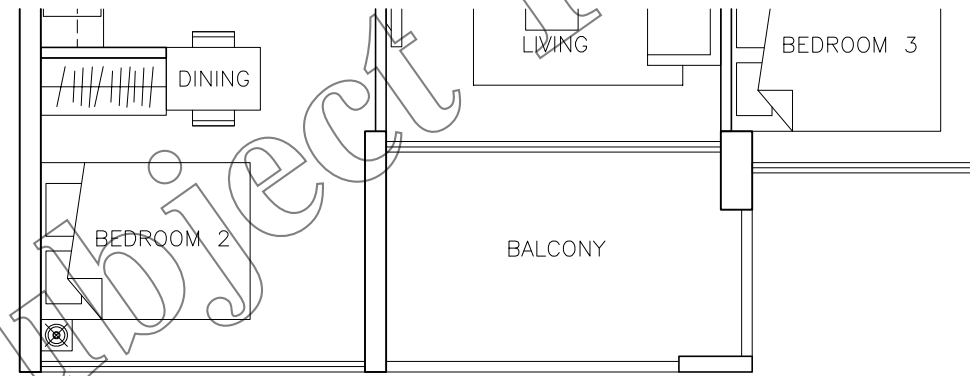
TYPE C4 (DK)

SALEABLE AREA = 105.1 sqm (1,131.1 sqft)
 3-BEDROOM
 TOTAL NO. OF UNITS = 5



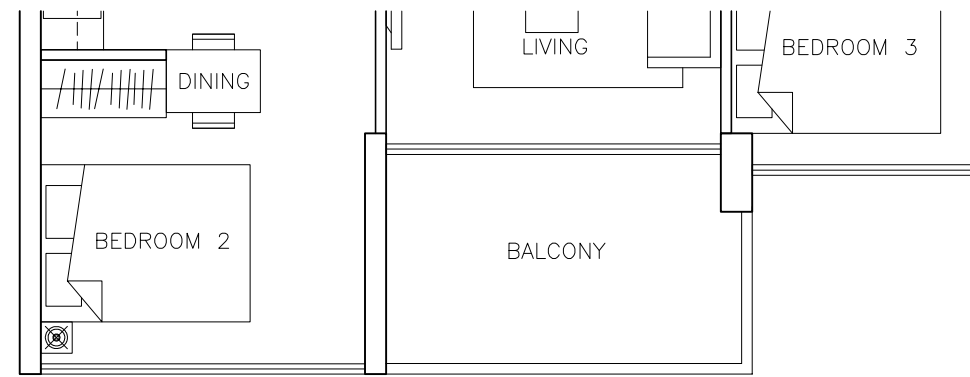
TYPE C4-PA(DK)

SALEABLE AREA = 104.7 sqm (1,126.6 sqft)
 3-BEDROOM
 TOTAL NO. OF UNITS = 1



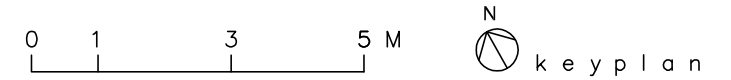
TYPE C4a (DK)

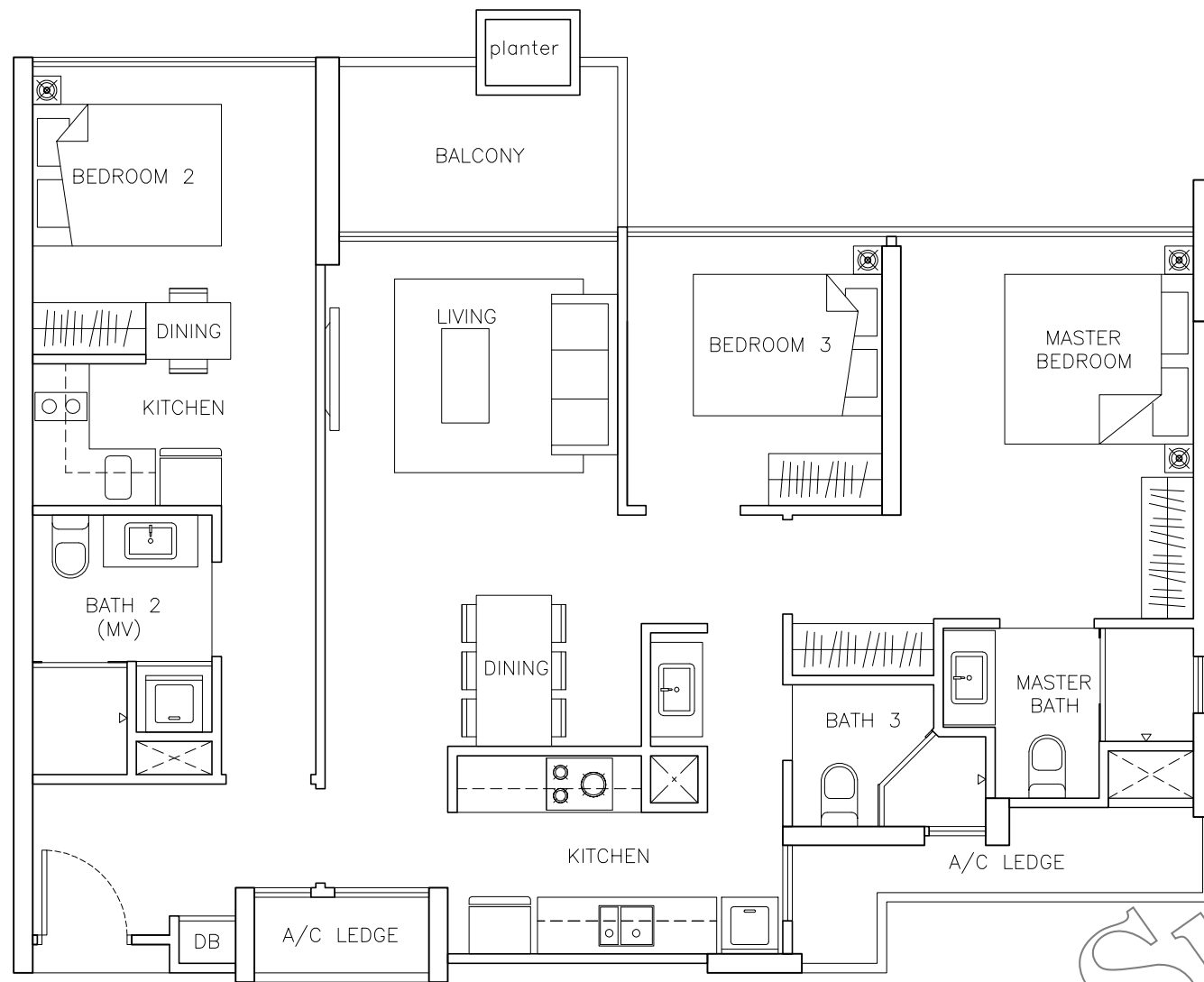
SALEABLE AREA = 104.7 sqm (1,126.6 sqft)
 3-BEDROOM
 TOTAL NO. OF UNITS = 4



TYPE C4b (DK)

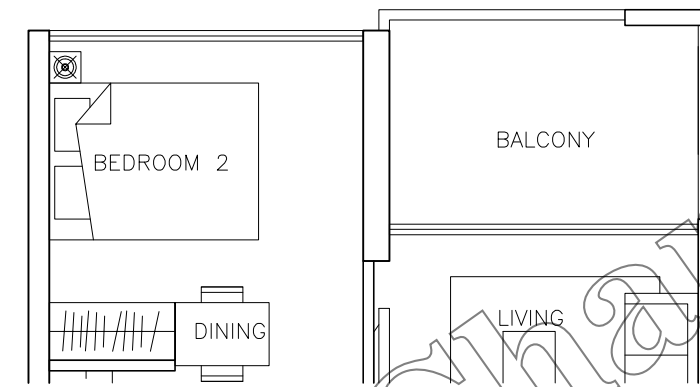
SALEABLE AREA = 104.7 sqm (1,126.6 sqft)
 3-BEDROOM
 TOTAL NO. OF UNITS = 5





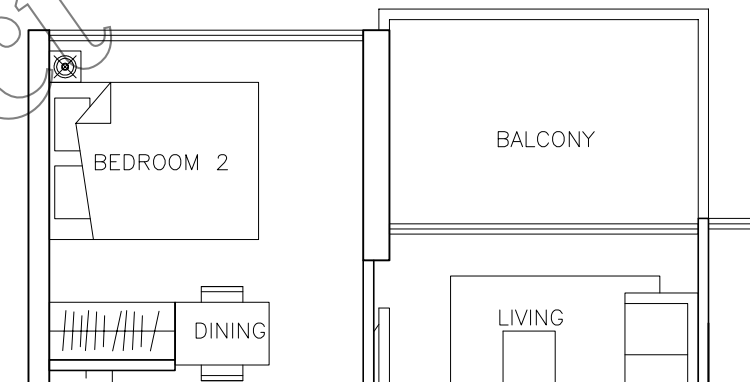
TYPE C5 (DK) (SHOWFLAT)

SALEABLE AREA = 106.8 sqm (1,149.5 sqft)
 3-BEDROOM
 TOTAL NO. OF UNITS = 22



TYPE C5a (DK)

SALEABLE AREA = 106.9 sqm (1,150.1 sqft)
 3-BEDROOM
 TOTAL NO. OF UNITS = 8



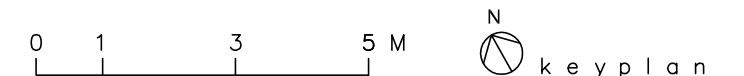
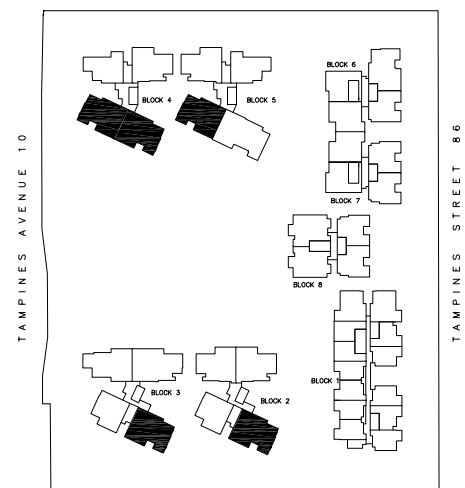
TYPE C5c (DK)

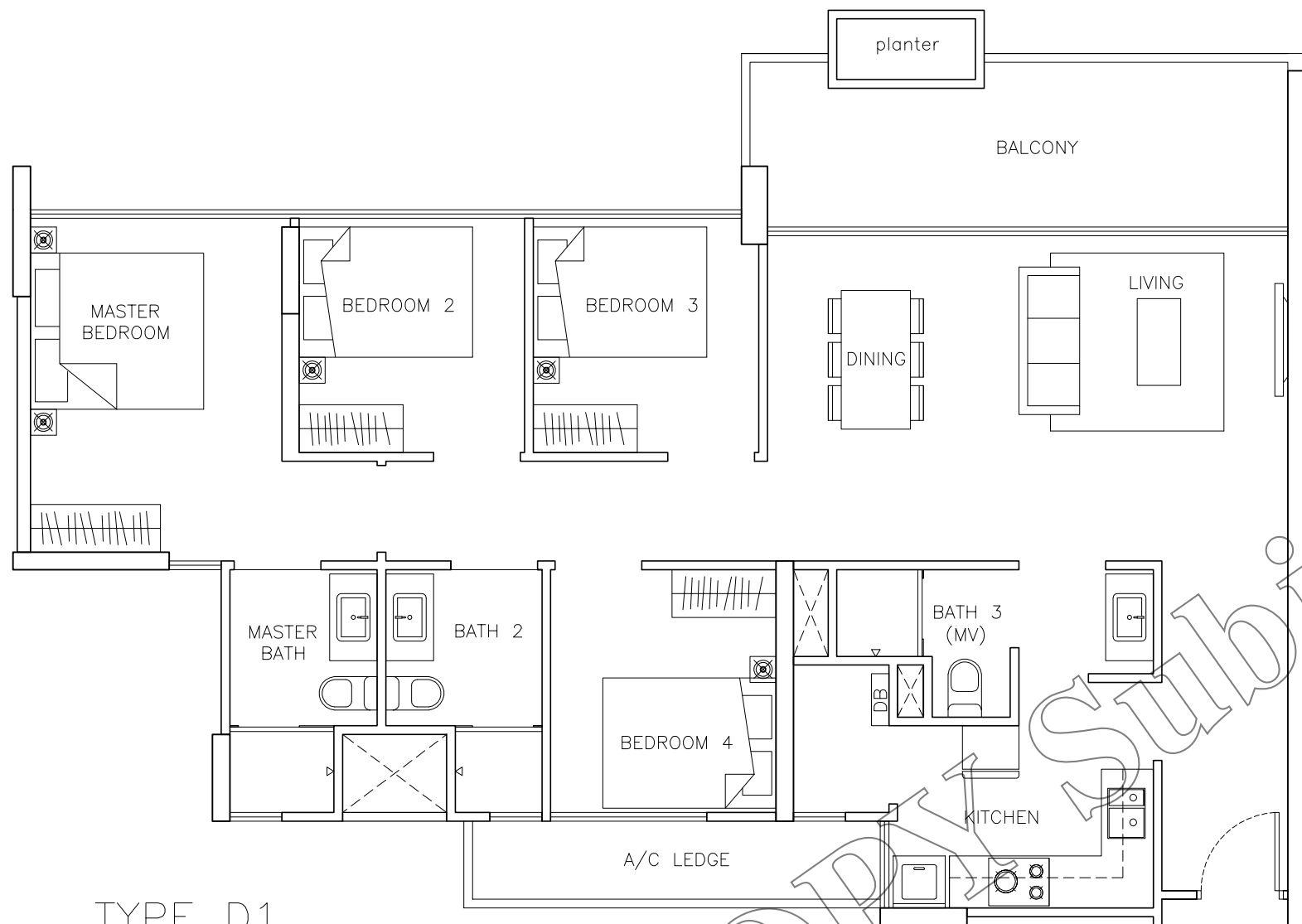
SALEABLE AREA = 106.9 sqm (1,150.1 sqft)
 3-BEDROOM
 TOTAL NO. OF UNITS = 23



TYPE C5b (DK)

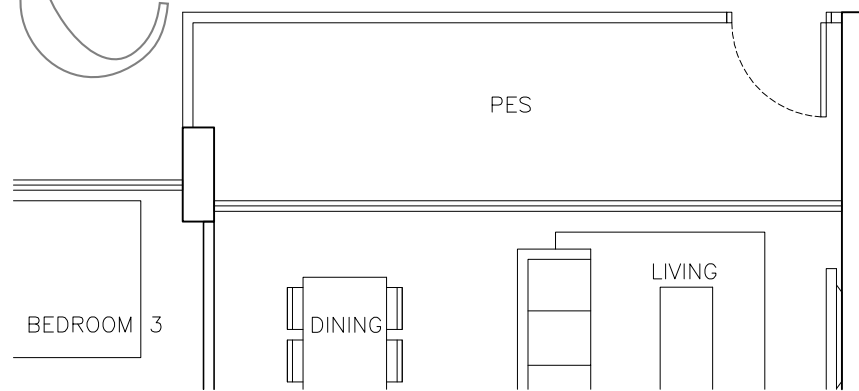
SALEABLE AREA = 117.3 sqm (1,262.2 sqft)
 3-BEDROOM
 TOTAL NO. OF UNITS = 12





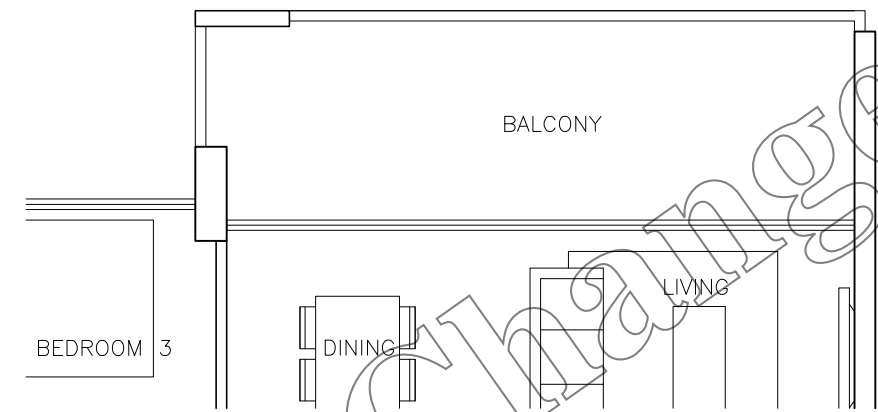
TYPE D1

SALEABLE AREA = 116.8 sqm (1,257.6 sqft)
 4-BEDROOM
 TOTAL NO. OF UNITS = 5



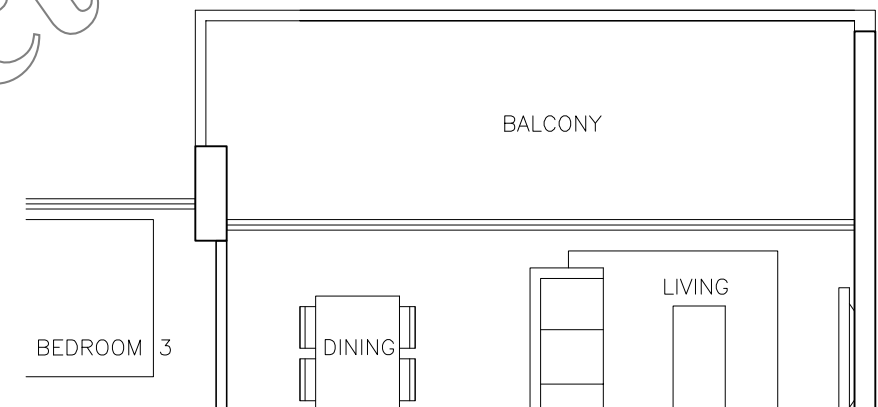
TYPE D1-P

SALEABLE AREA = 115.9 sqm (1,247.9 sqft)
 4-BEDROOM
 TOTAL NO. OF UNITS = 1



TYPE D1a

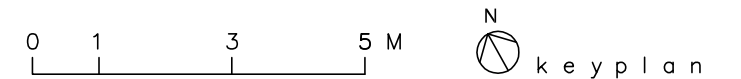
SALEABLE AREA = 115.9 sqm (1,247.9 sqft)
 4-BEDROOM
 TOTAL NO. OF UNITS = 4

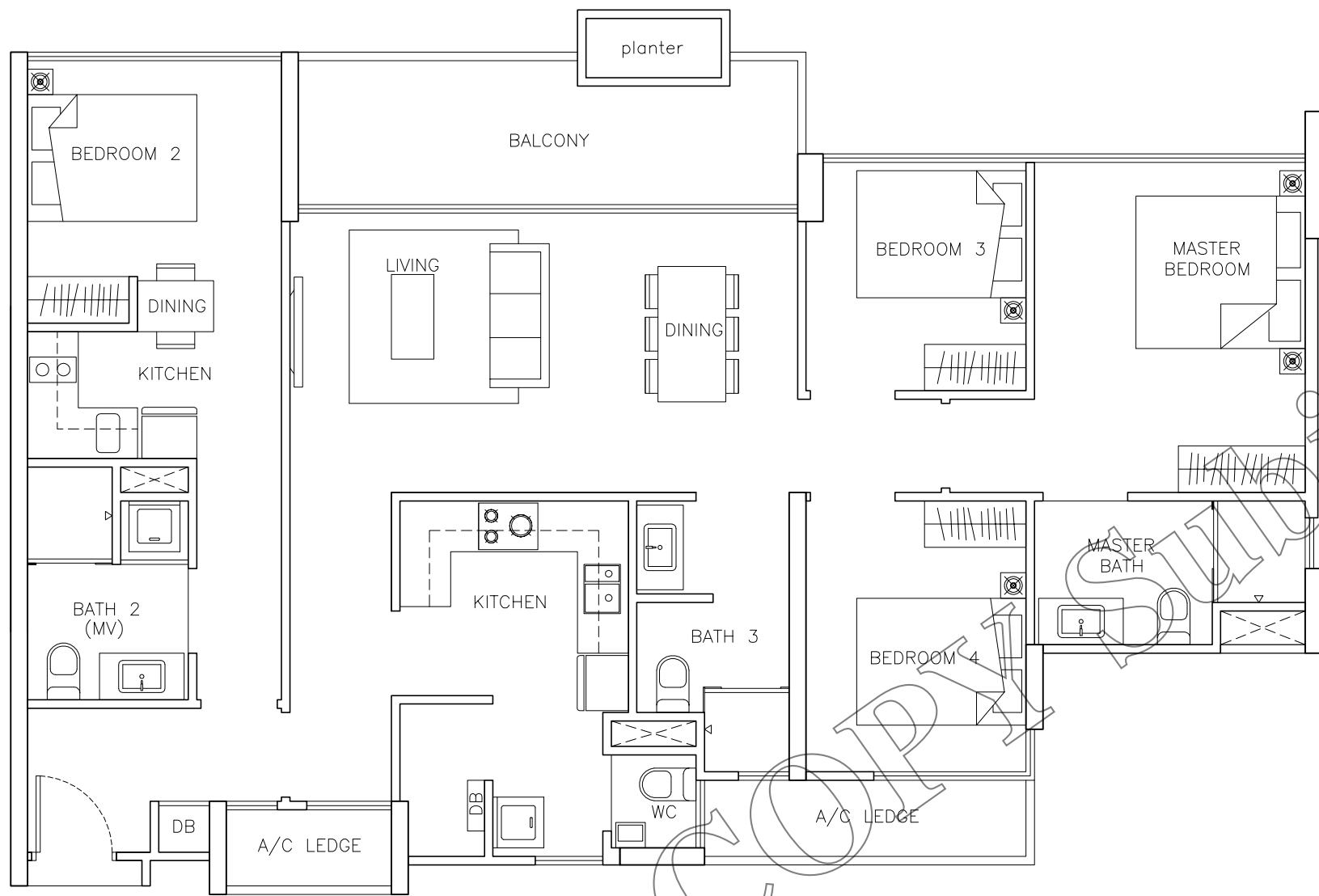


TYPE D1b

SALEABLE AREA = 115.9 sqm (1,247.9 sqft)
 4-BEDROOM
 TOTAL NO. OF UNITS = 4

DRAFT



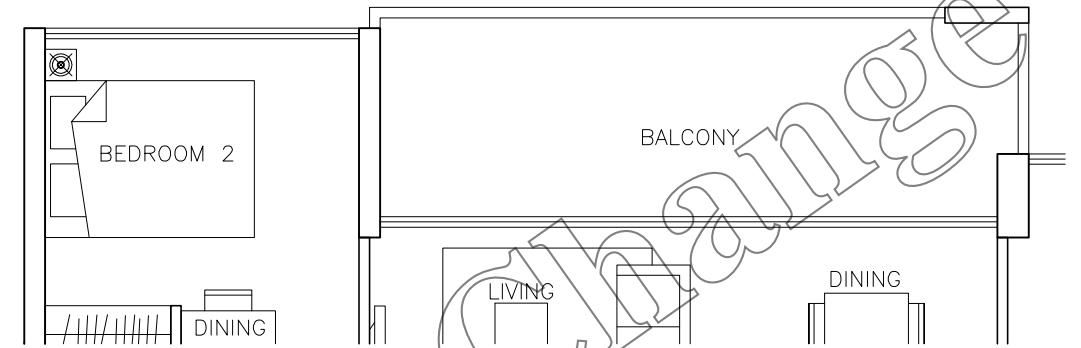


TYPE D2 (DK)

SALEABLE AREA = 131.5 sqm (1,415.5 sqft)

4-BEDROOM

TOTAL NO. OF UNITS = 4

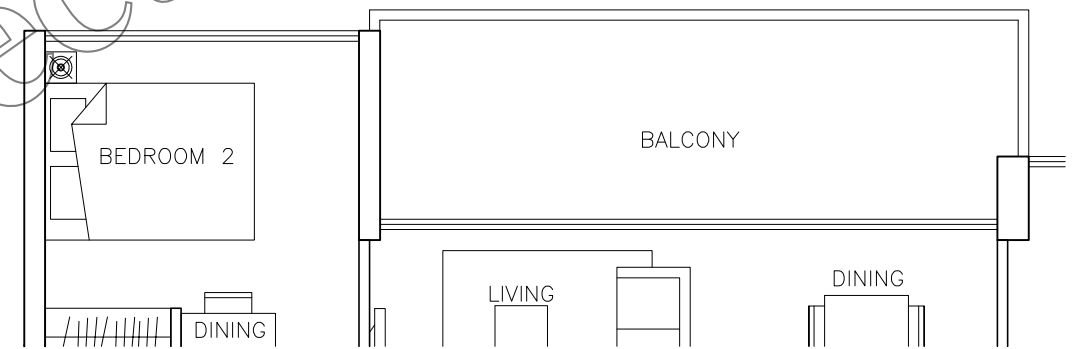


TYPE D2a (DK)

SALEABLE AREA = 132.2 sqm (1,423.0 sqft)

4-BEDROOM

TOTAL NO. OF UNITS = 4

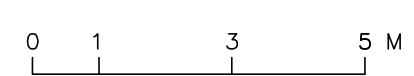
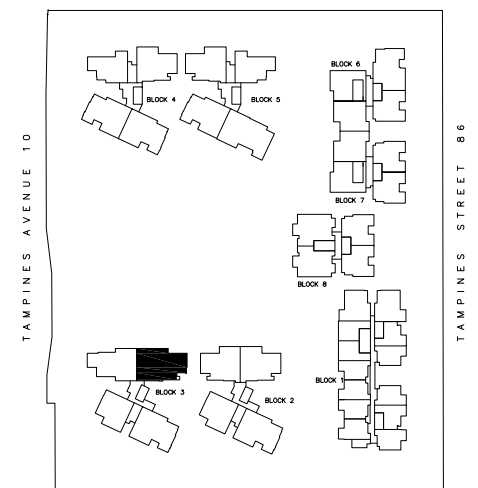


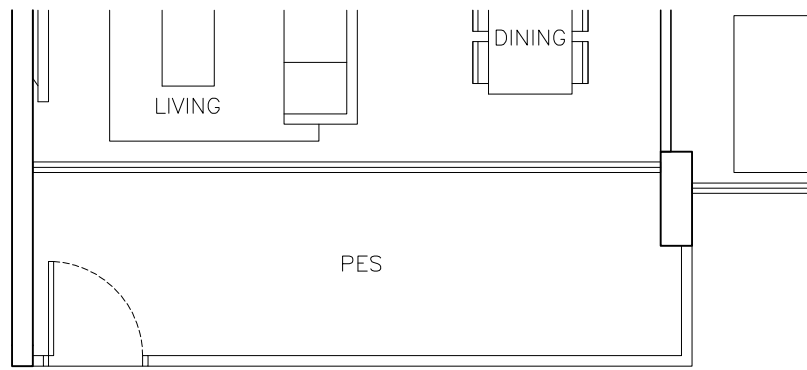
TYPE D2b (DK)

SALEABLE AREA = 132.2 sqm (1,423.0 sqft)

4-BEDROOM

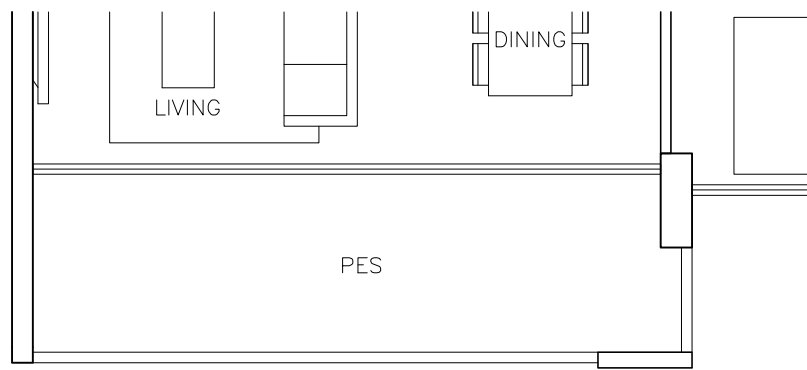
TOTAL NO. OF UNITS = 5





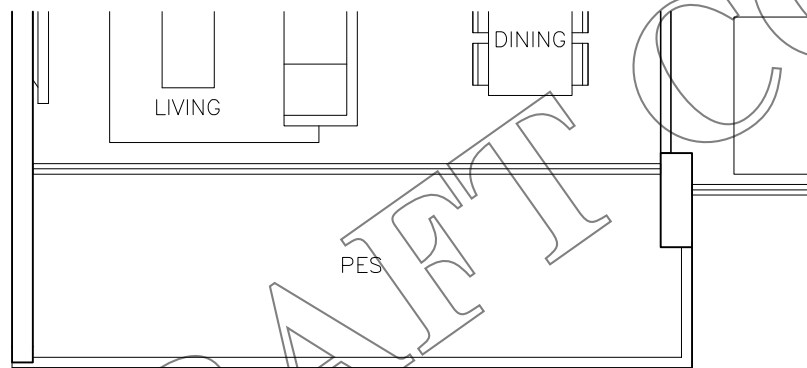
TYPE E1-P

SALEABLE AREA = 126.9 sqm (1,365.6 sqft)
 5-BEDROOM
 TOTAL NO. OF UNITS = 1



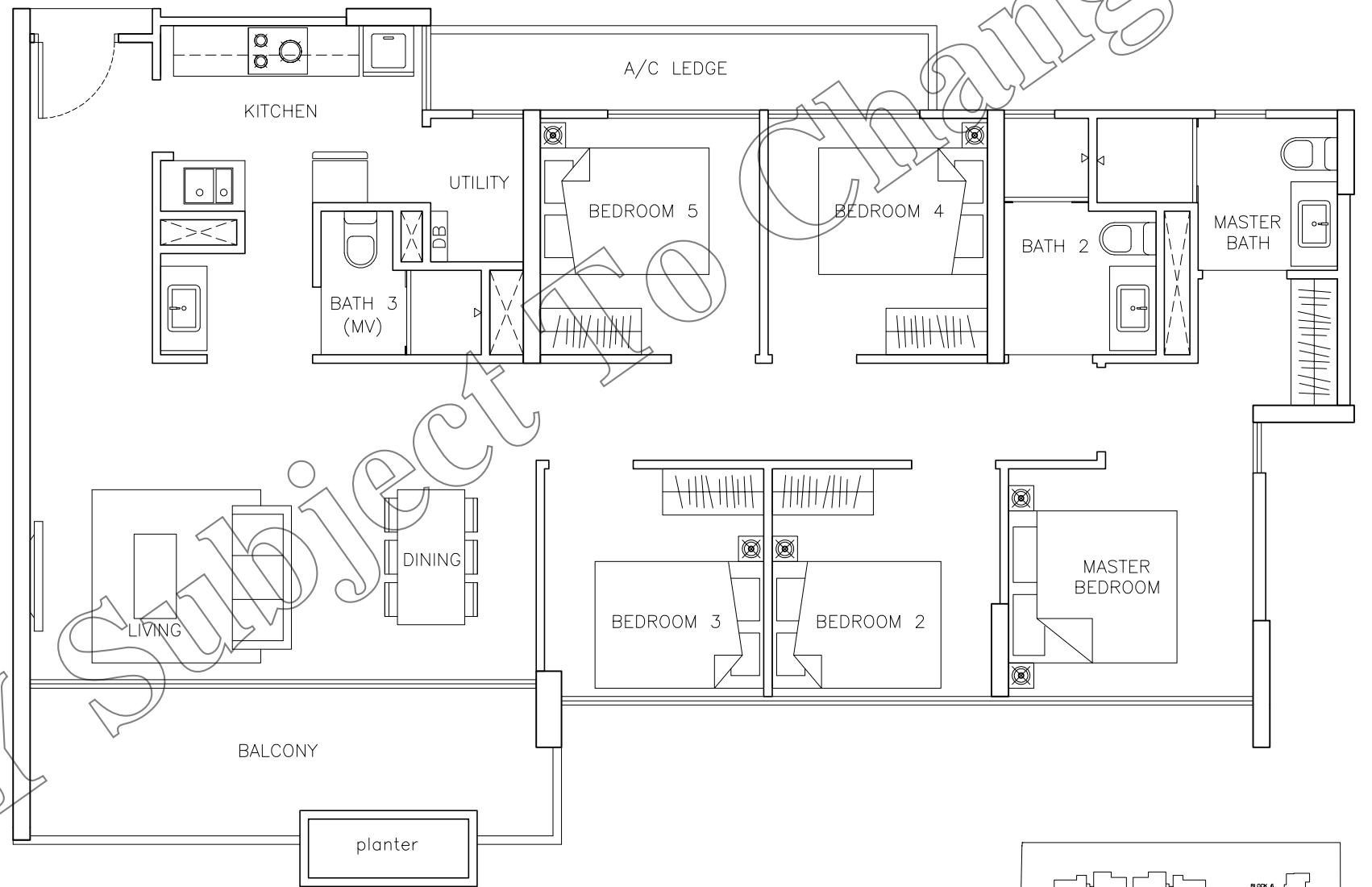
TYPE E1a

SALEABLE AREA = 126.9 sqm (1,365.6 sqft)
 5-BEDROOM
 TOTAL NO. OF UNITS = 4



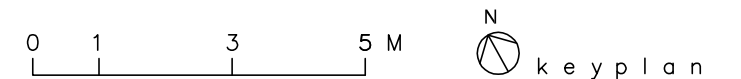
TYPE E1b

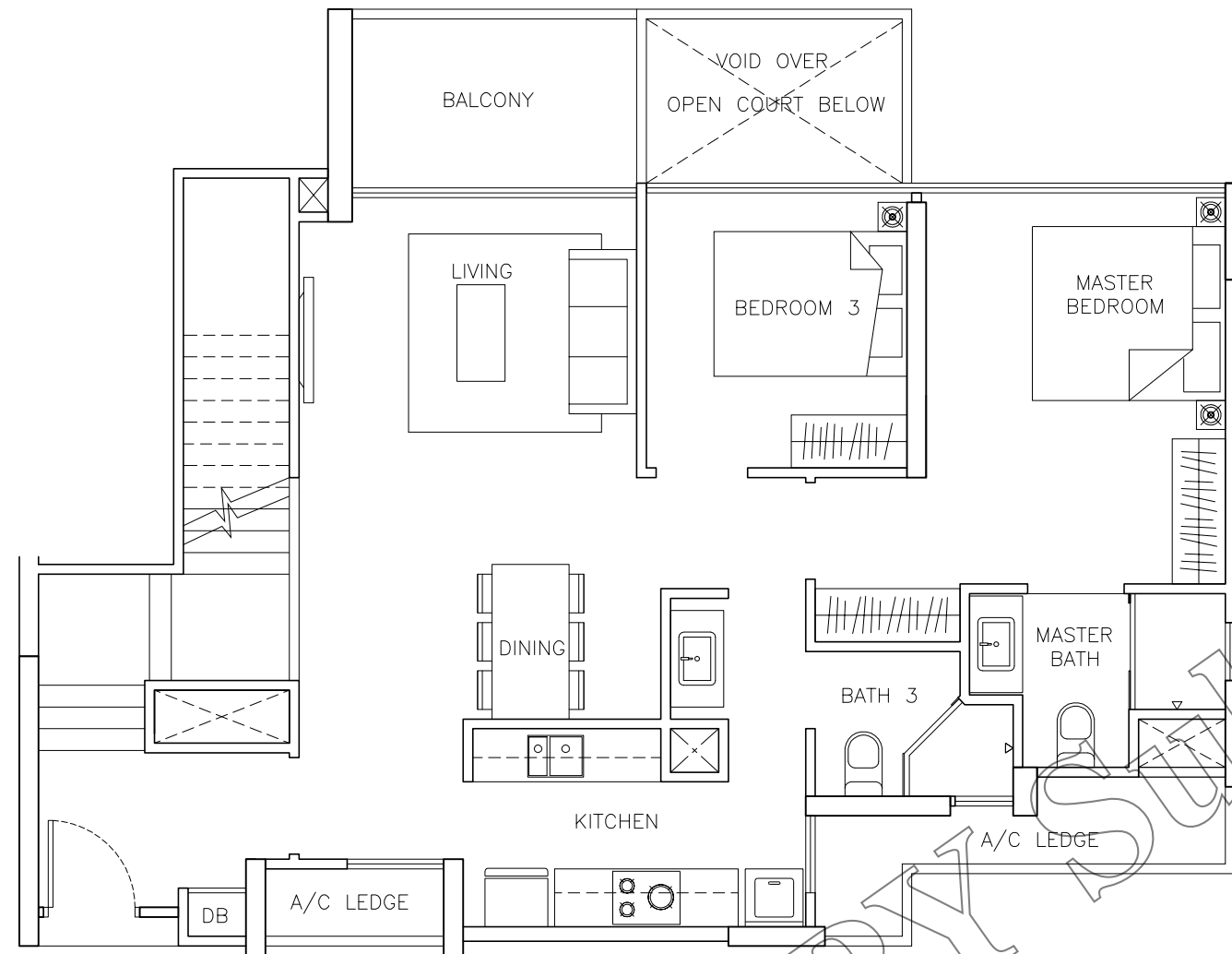
SALEABLE AREA = 126.9 sqm (1,365.6 sqft)
 5-BEDROOM
 TOTAL NO. OF UNITS = 5



TYPE E1

SALEABLE AREA = 127.9 sqm (1,376.9 sqft)
 5-BEDROOM
 TOTAL NO. OF UNITS = 4

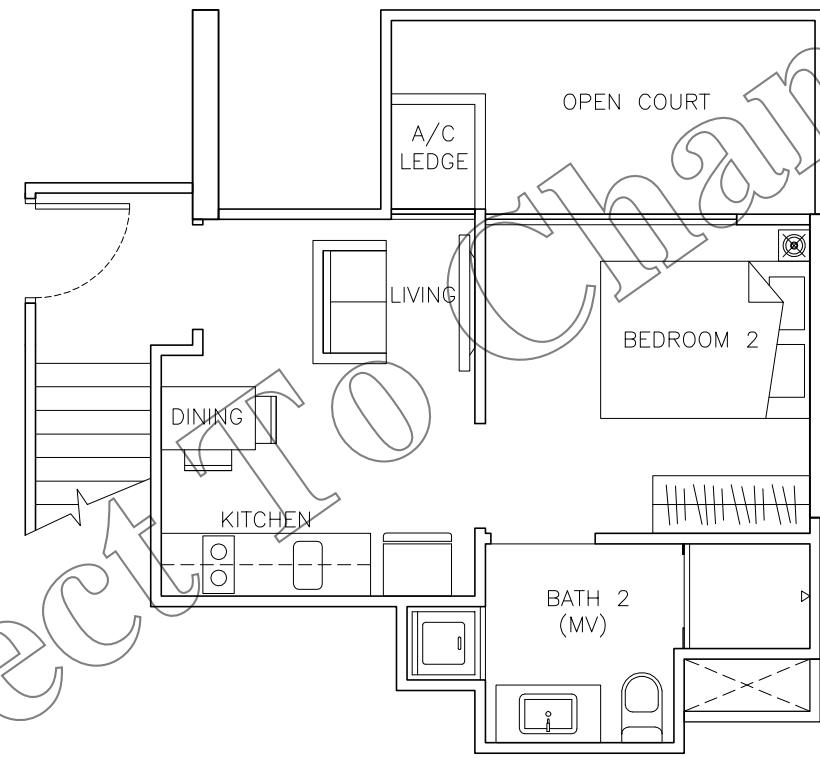




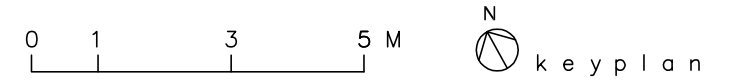
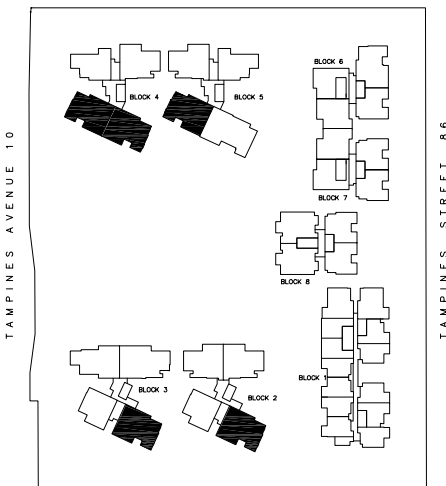
TYPE GD1-UPPER

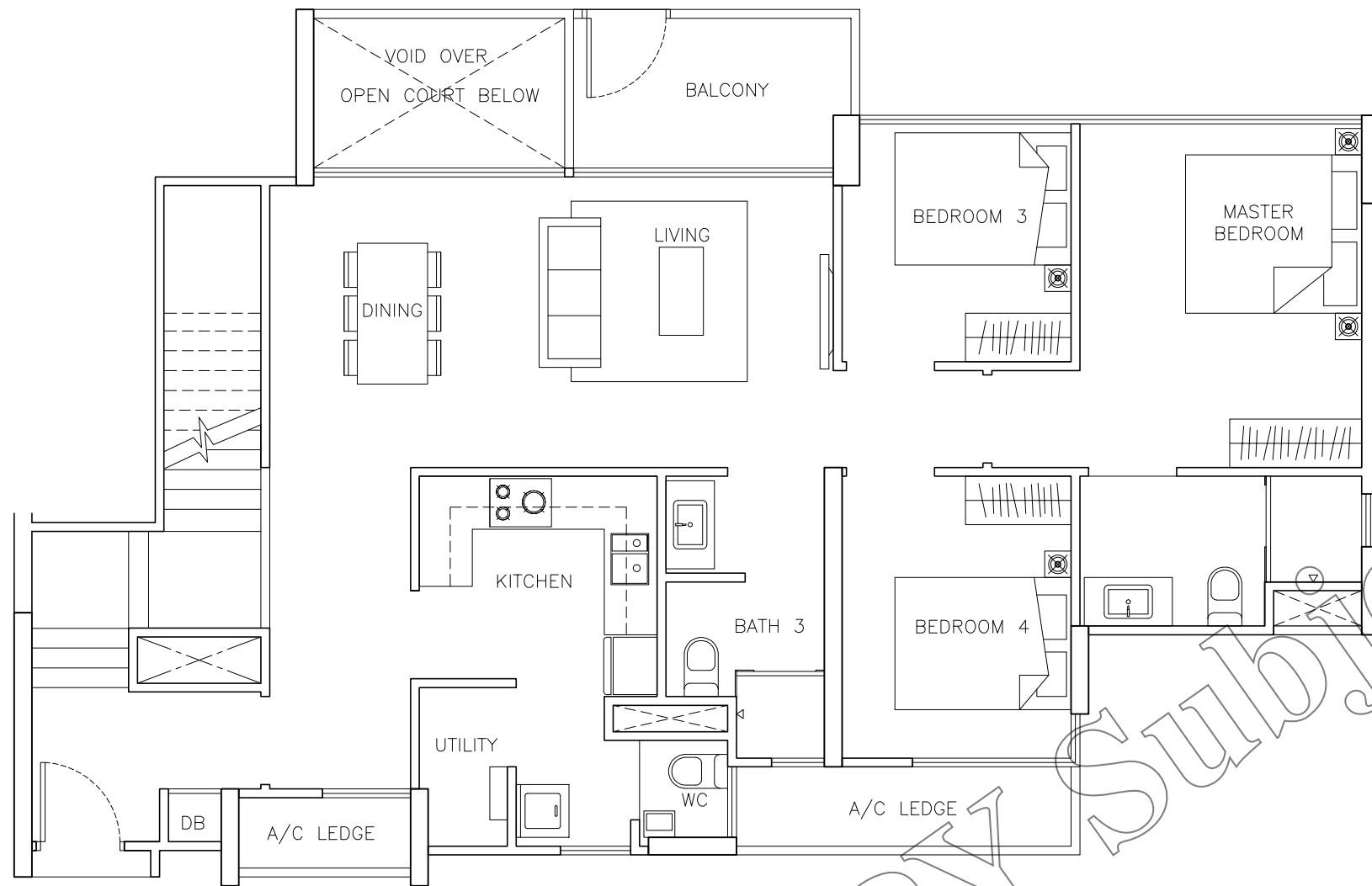
TYPE GD1_DK

SALEABLE AREA (INCLUDING PRIVATE CAR PARK LOTS)
 174.7 sqm (1,880.4 sqft)
 3-BEDROOM
 TOTAL NO. OF UNITS = 5



TYPE GD1-LOWER

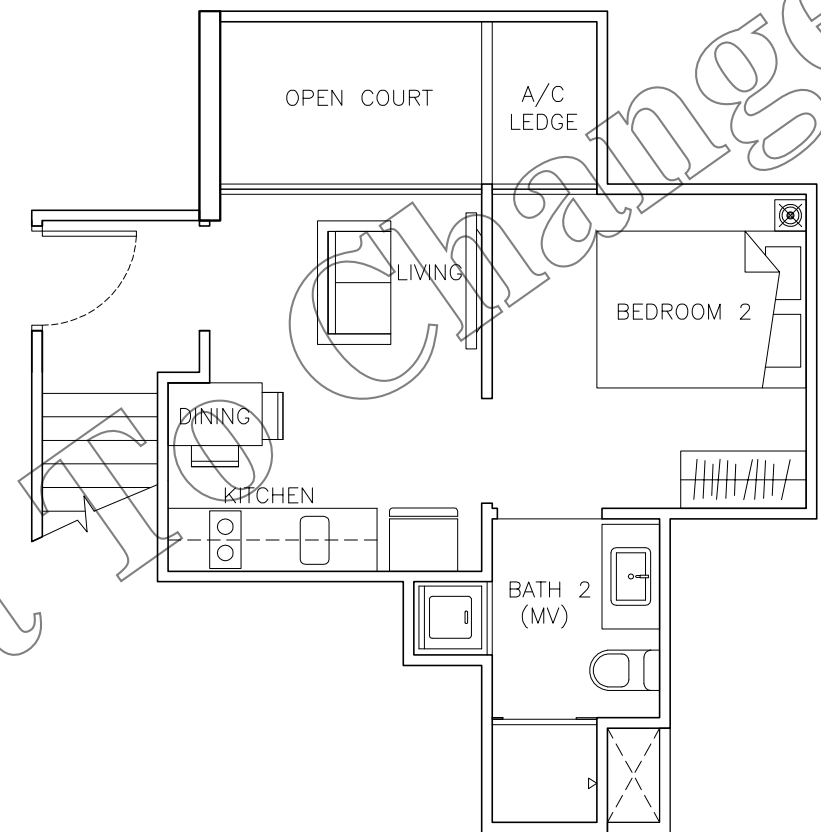




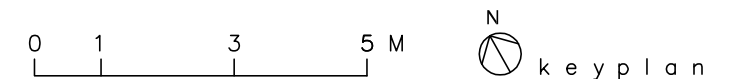
TYPE GD2-UPPER

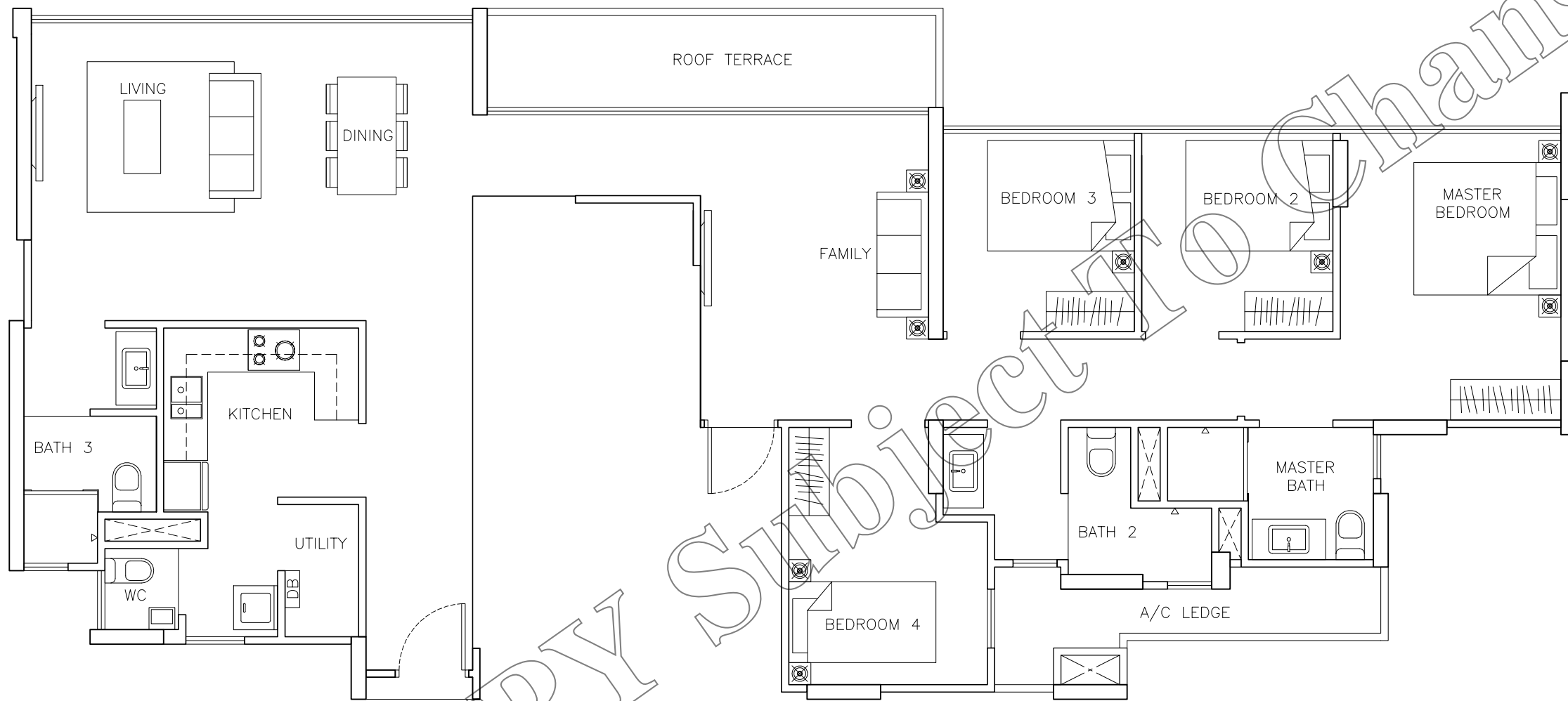
TYPE GD2-DK

SALEABLE AREA (INCLUDING PRIVATE CAR PARK LOTS)
 181.6 sqm (1,954.9 sqft)
 4-BEDROOM
 TOTAL NO. OF UNITS = 1



TYPE GD2-LOWER





TYPE PH_C1

SALEABLE AREA = 139.6 sqm (1,502.5 sqft)

4-BEDROOM

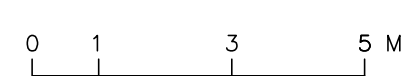
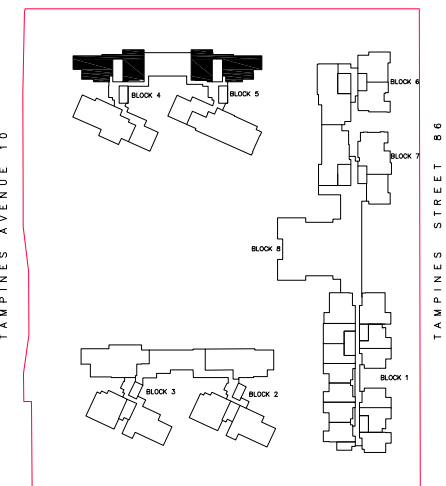
TOTAL NO. OF UNITS = 2

DRAFT

COPIY

Subject

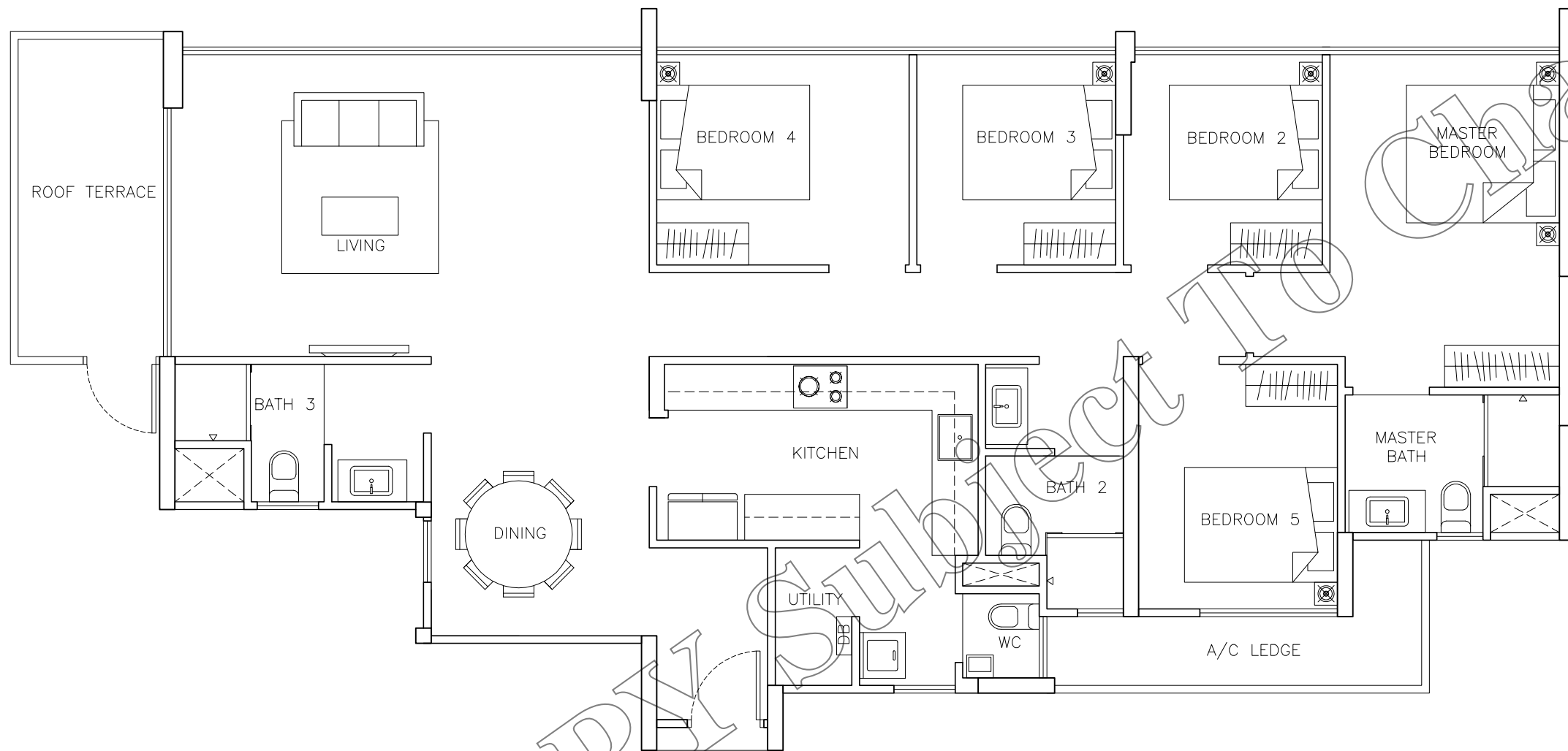
Change



unit plans

AGA ARCHITECTS PTE LTD
 PROPOSED CONDOMINIUM AT TAMPINES AVENUE 10
 09 DECEMBER 2013

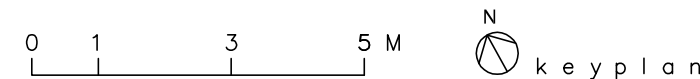
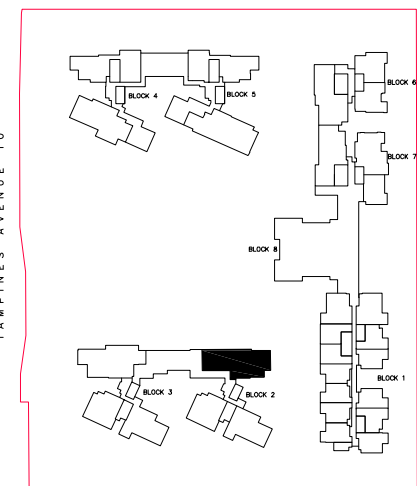
SCALE 1: 100

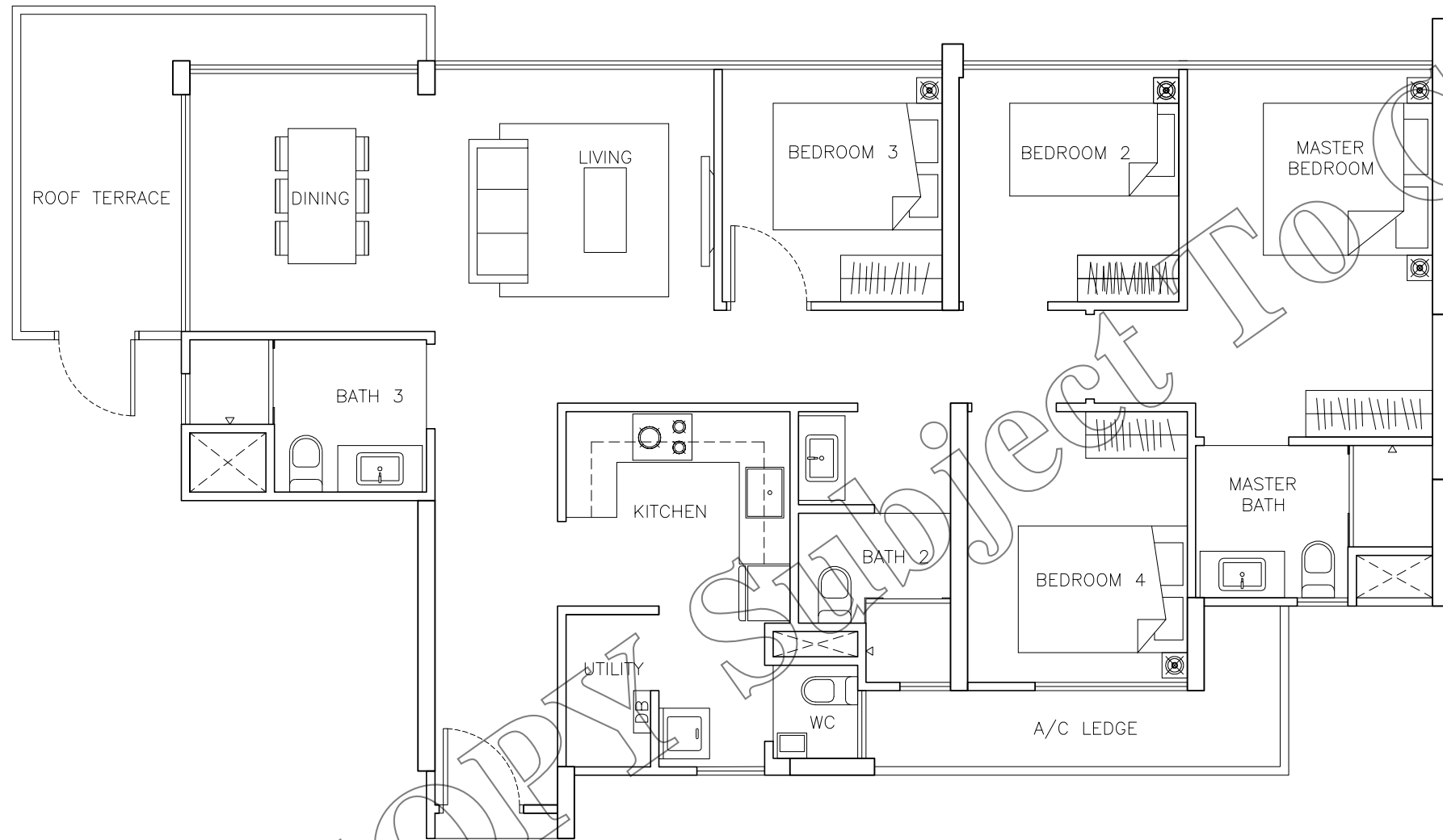


TYPE PH_C3

SALEABLE AREA = 148.5 sqm (1,598.3 sqft)
 5-BEDROOM
 TOTAL NO. OF UNITS = 1

DRAFT





TYPE PH_C3a

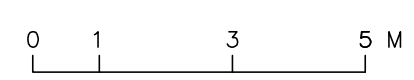
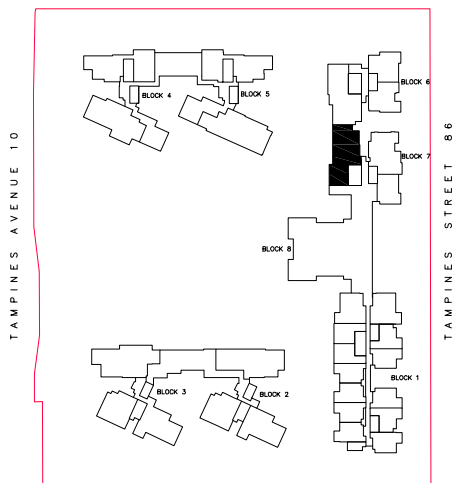
SALEABLE AREA = 121.9 sqm (1,312.2 sqft)

4-BEDROOM

TOTAL NO. OF UNITS = 1

DRAFT

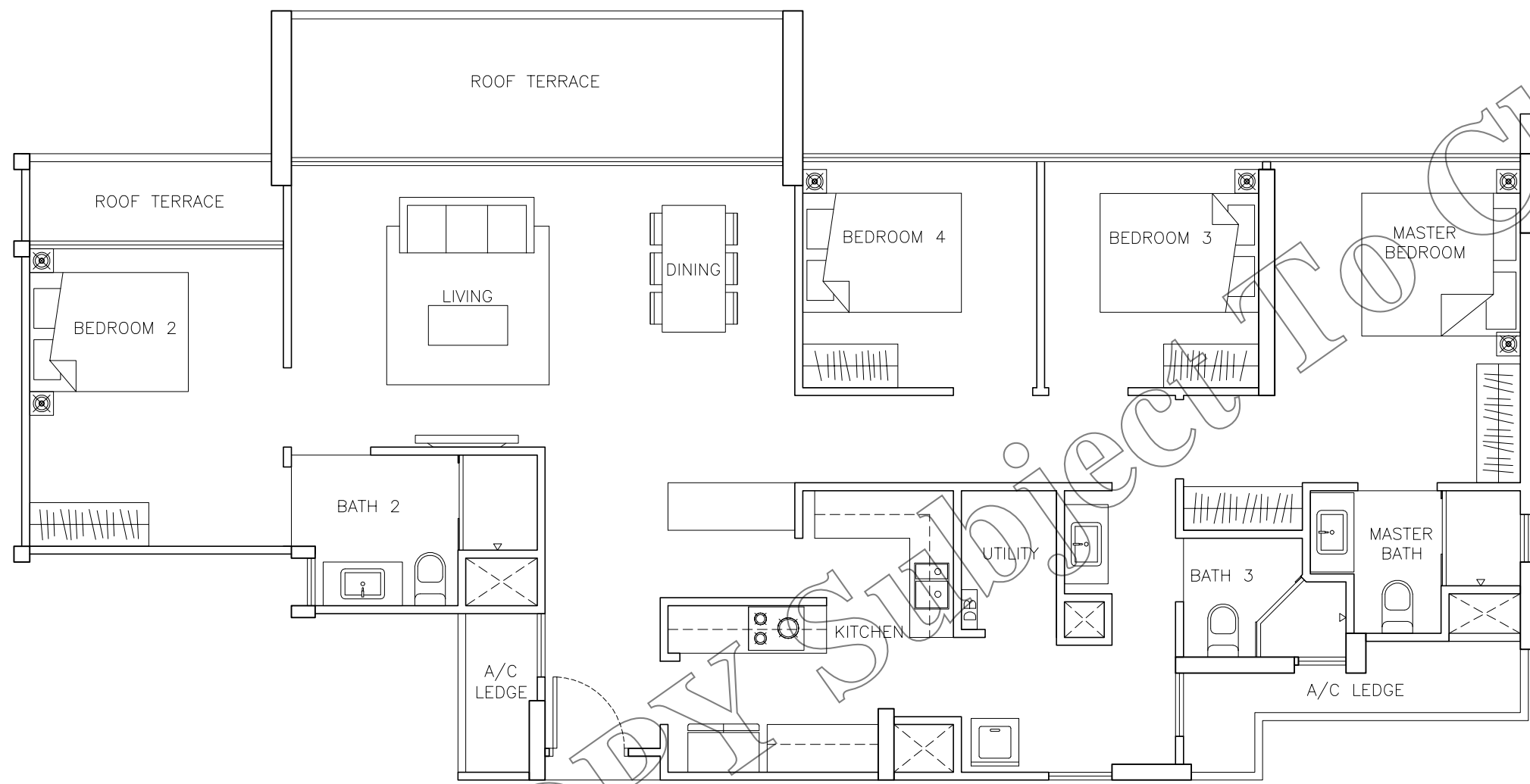
COPY



unit plans

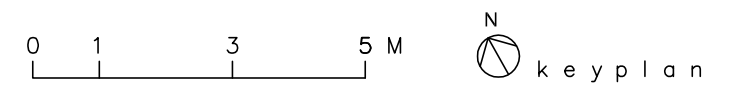
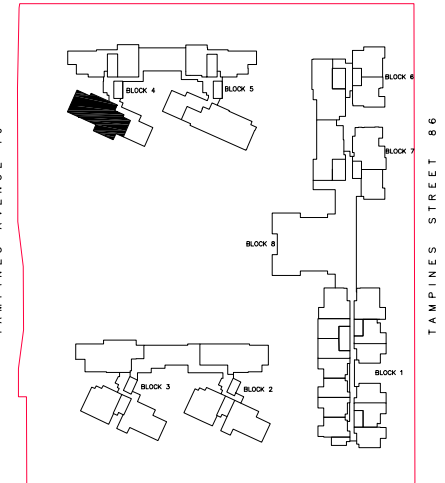
SCALE 1: 100

AGA ARCHITECTS PTE LTD
 PROPOSED CONDOMINIUM AT TAMPINES AVENUE 10
 09 DECEMBER 2013



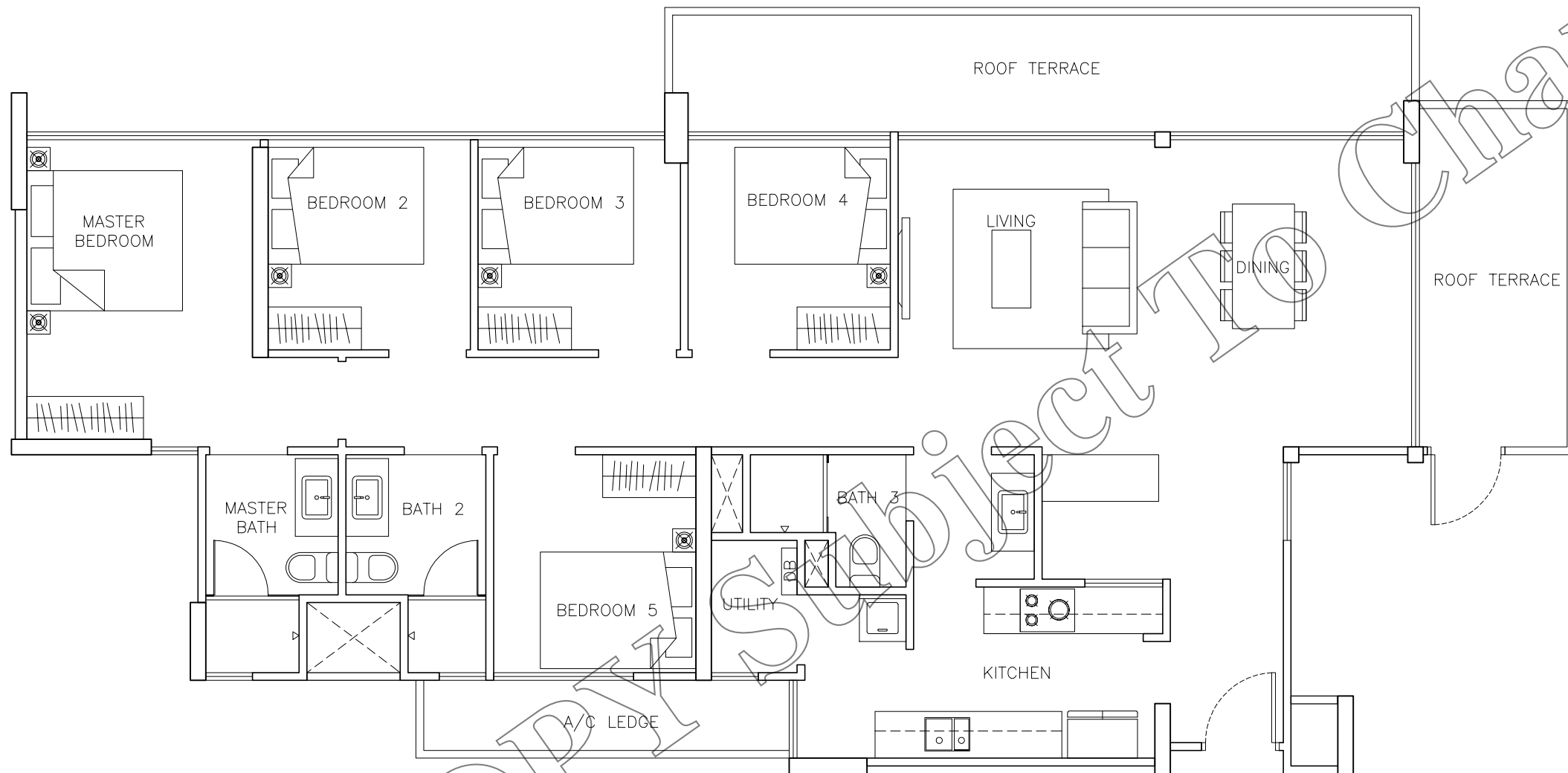
TYPE PH_C5

SALEABLE AREA = 141.6 sqm (1,524.1 sqft)
 4-BEDROOM
 TOTAL NO. OF UNITS = 1



DRAFT

COPYRIGHT PROJECT NO. Change

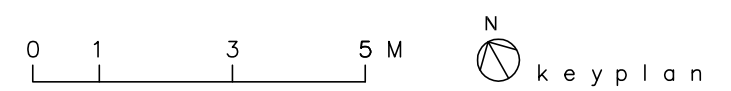
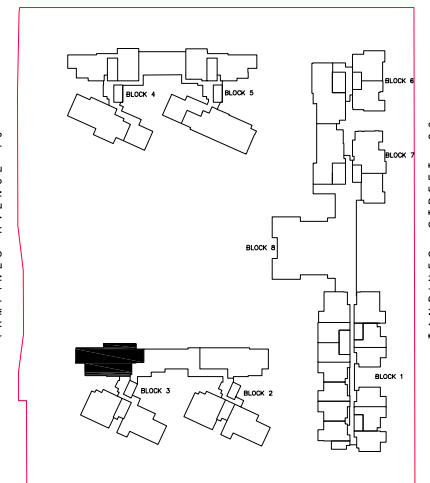


TYPE PH_D1

SALEABLE AREA = 148.9 sqm (1,603.1 sqft)

5-BEDROOM

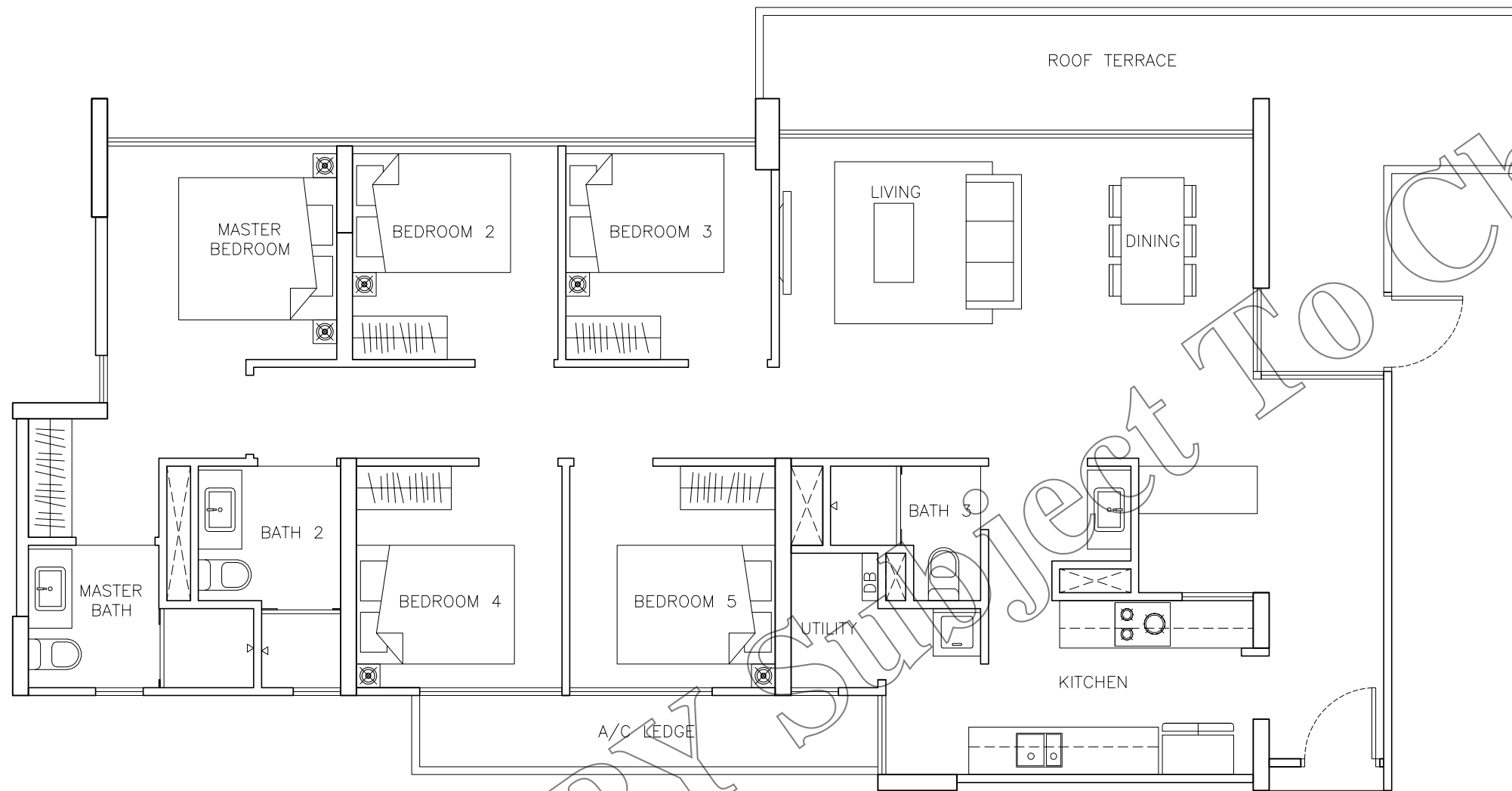
TOTAL NO. OF UNITS = 1



DRAFT COPY

Change

Subject



TYPE PH 2E1

SALEABLE AREA = 145.9 sqm (1,570.9 sqft)

5-BEDROOM

TOTAL NO. OF UNITS = 1

DRAFT

