

2-BEDROOM + STUDY

TYPE B

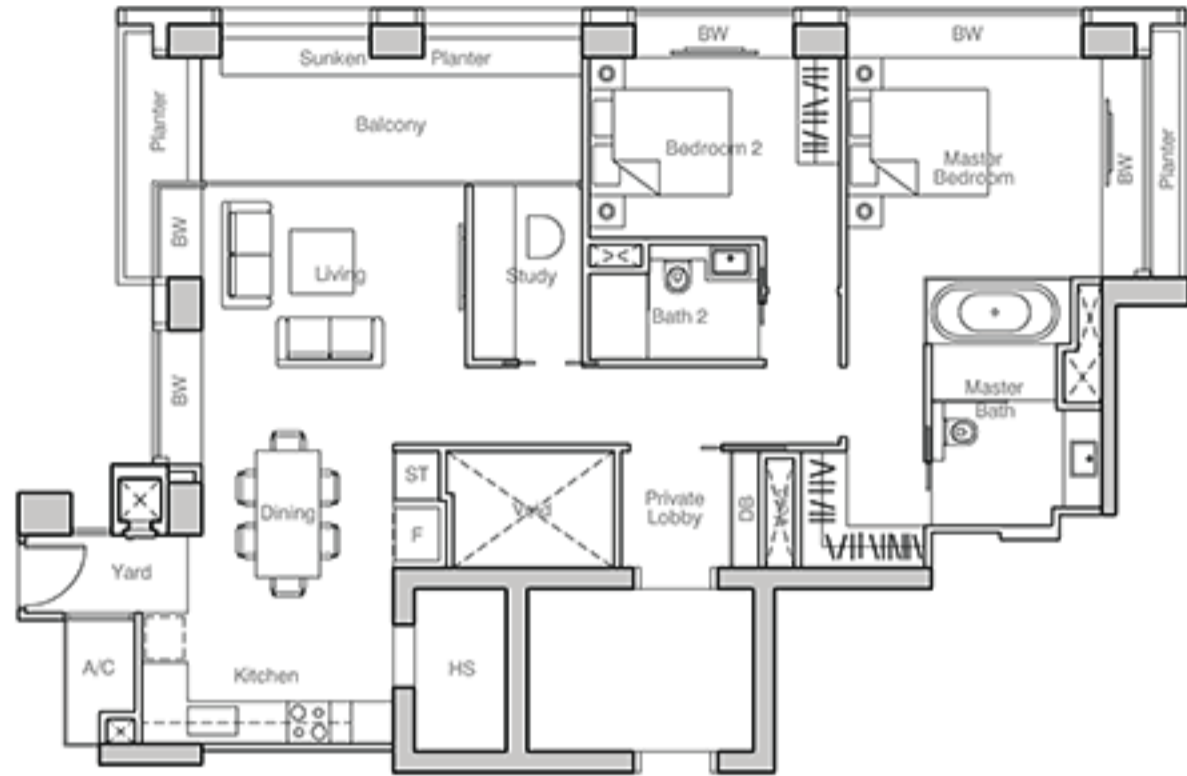
124 sqm (1,335 sq ft)

#04-04 - #09-04

#12-04 - #13-04

#16-04 - #18-04

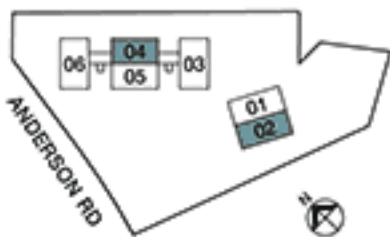
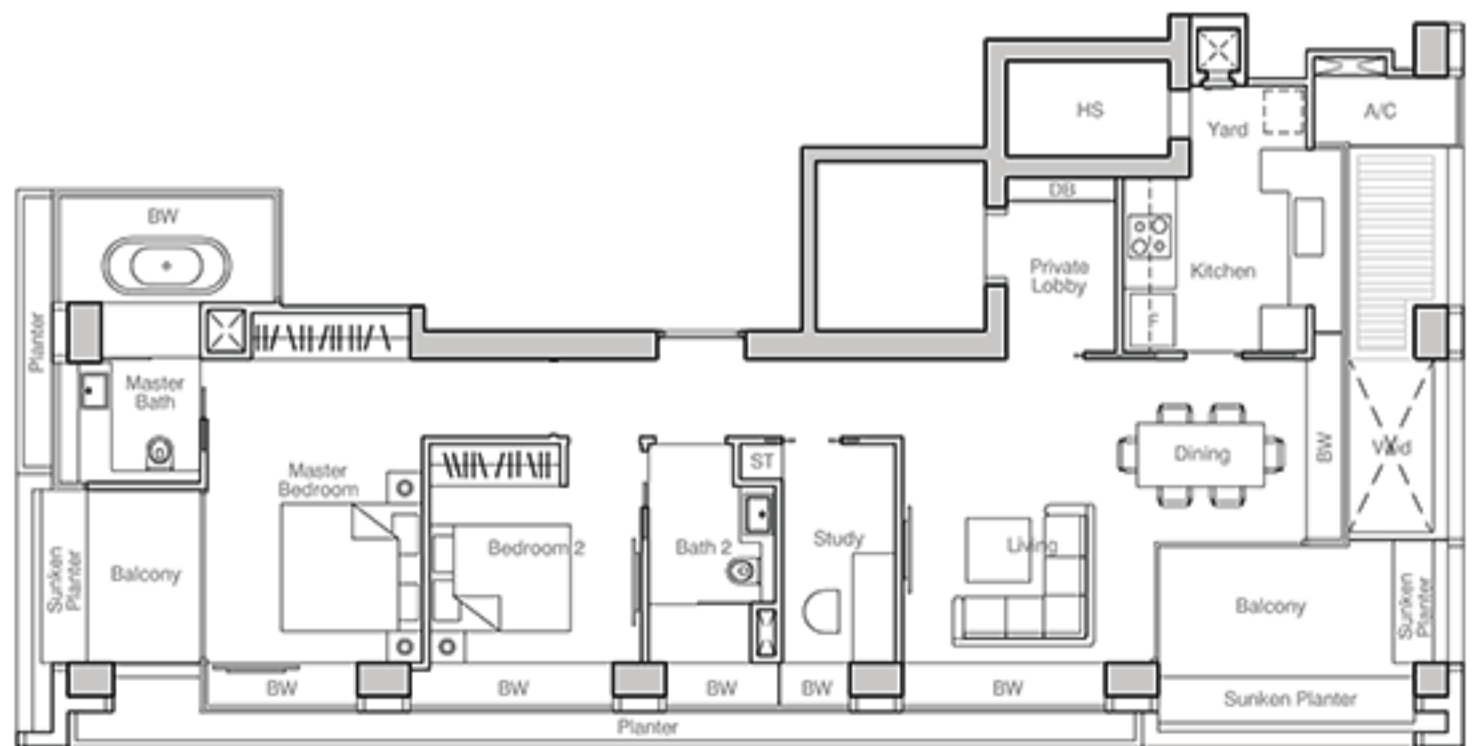
#22-04 - #24-04



TYPE B1

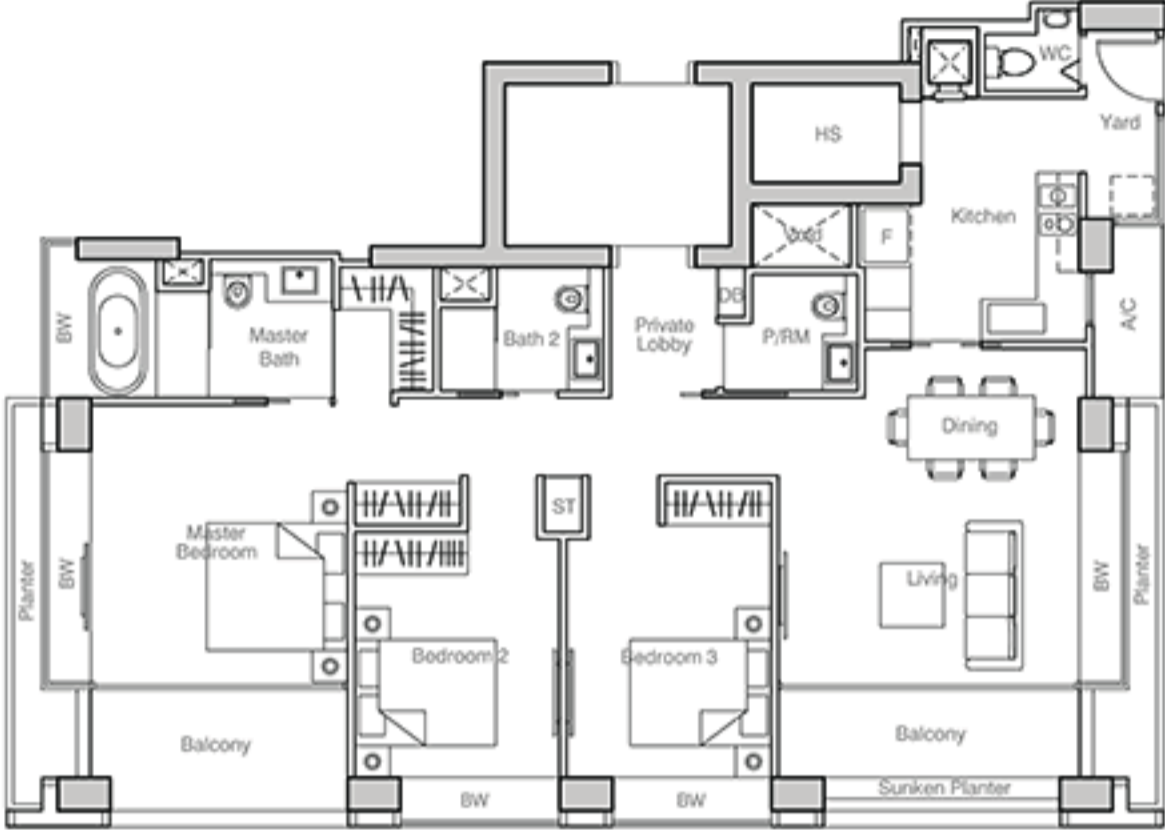
143 sqm (1,539 sq ft)

#02-02 - #13-02



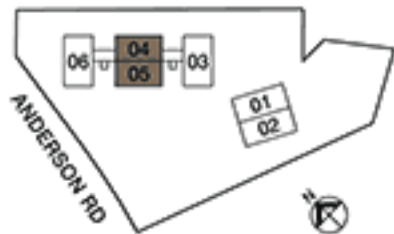
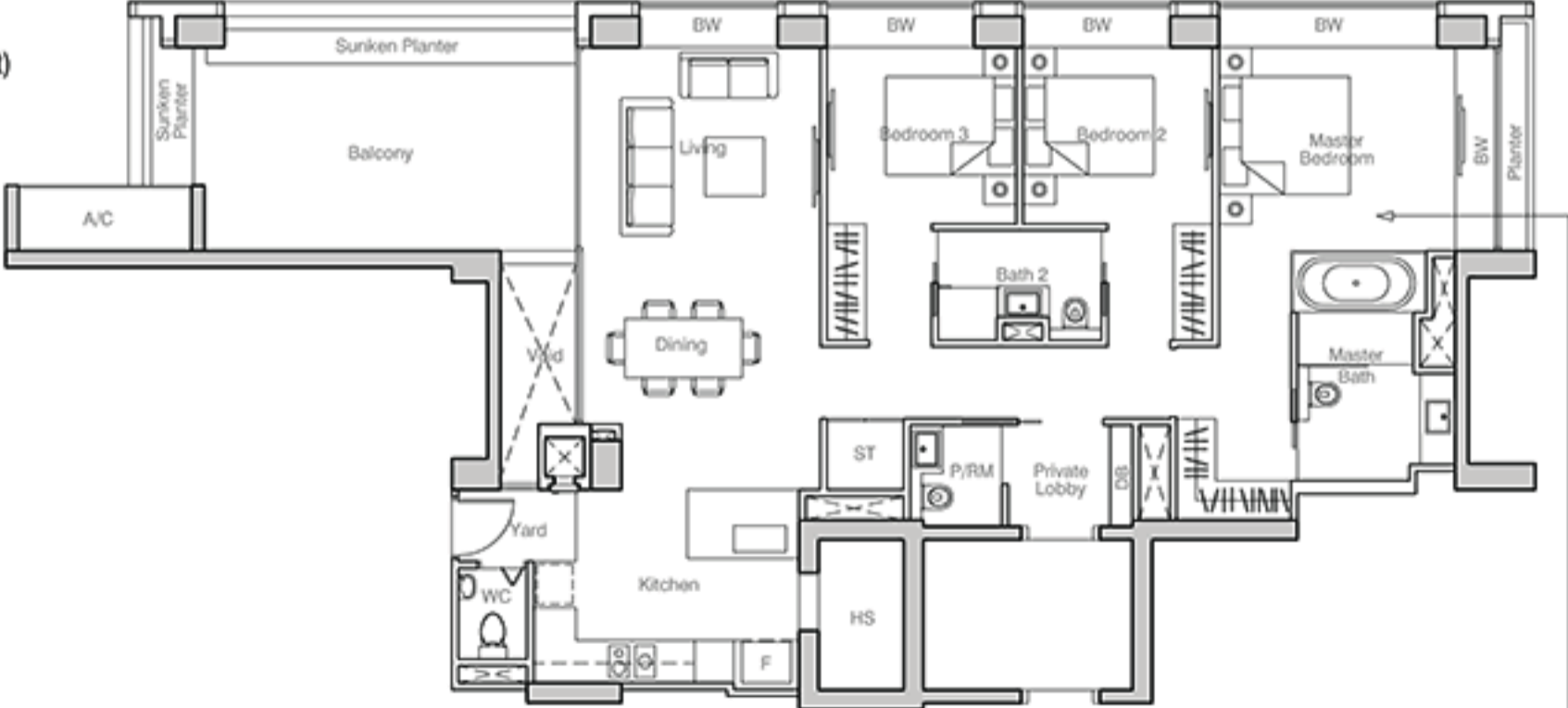
TYPE C

147 sqm (1,582 sq ft)
 #04-05 - #09-05
 #12-05 - #13-05
 #16-05 - #18-05
 #22-05 - #24-05



TYPE C1

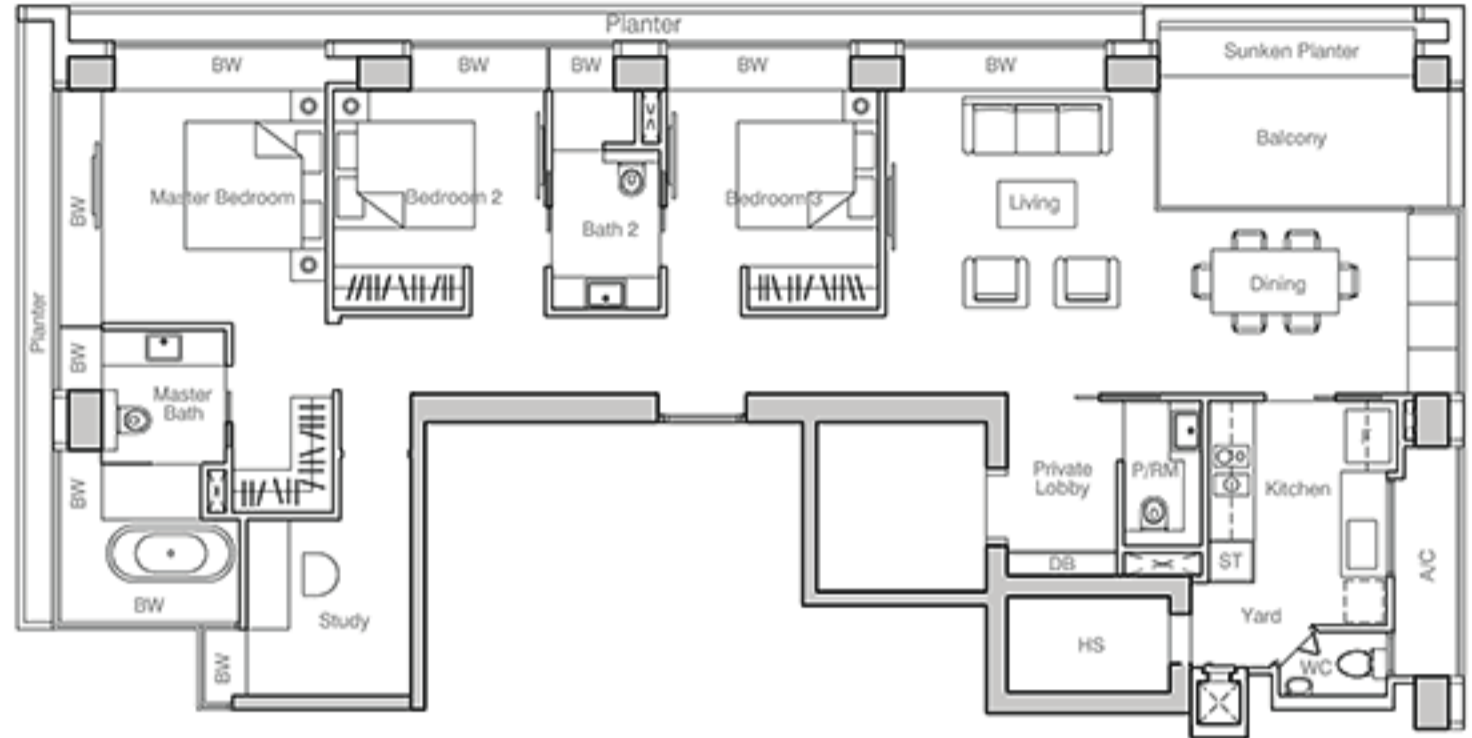
156 sqm (1,679 sq ft)
 #25-04 - #33-04



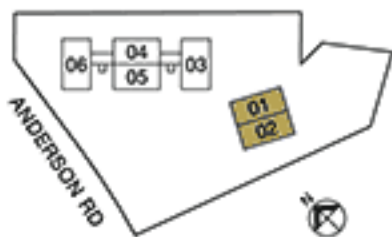
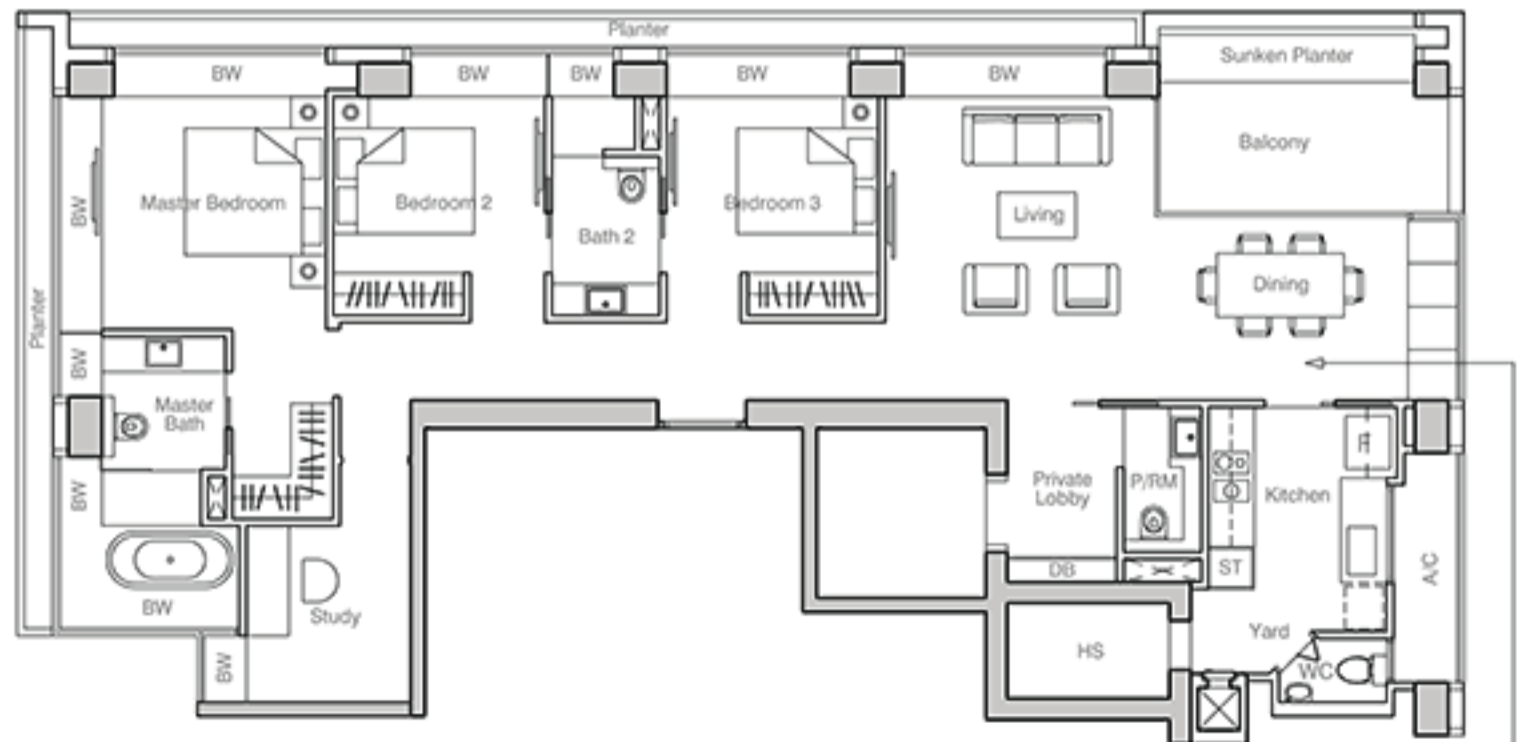
33-04
 CEILING HEIGHT FOR MASTER BEDROOM
 LOWER THAN OTHER BEDROOMS

3-BEDROOM + STUDY

TYPE C2
 164 sqm (1,765 sq ft)
 #02-01 - #13-01



TYPE C3
 164 sqm (1,765 sq ft)
 #16-01 - #21-01
 #16-02 - #21-02 (Mirror)



21-02
 CEILING HEIGHT FOR DINING AREA
 LOWER THAN LIVING AND OTHER BEDROOMS

4-BEDROOM + STUDY

TYPE D

230 sqm (2,476 sq ft)

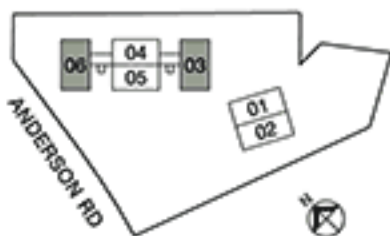
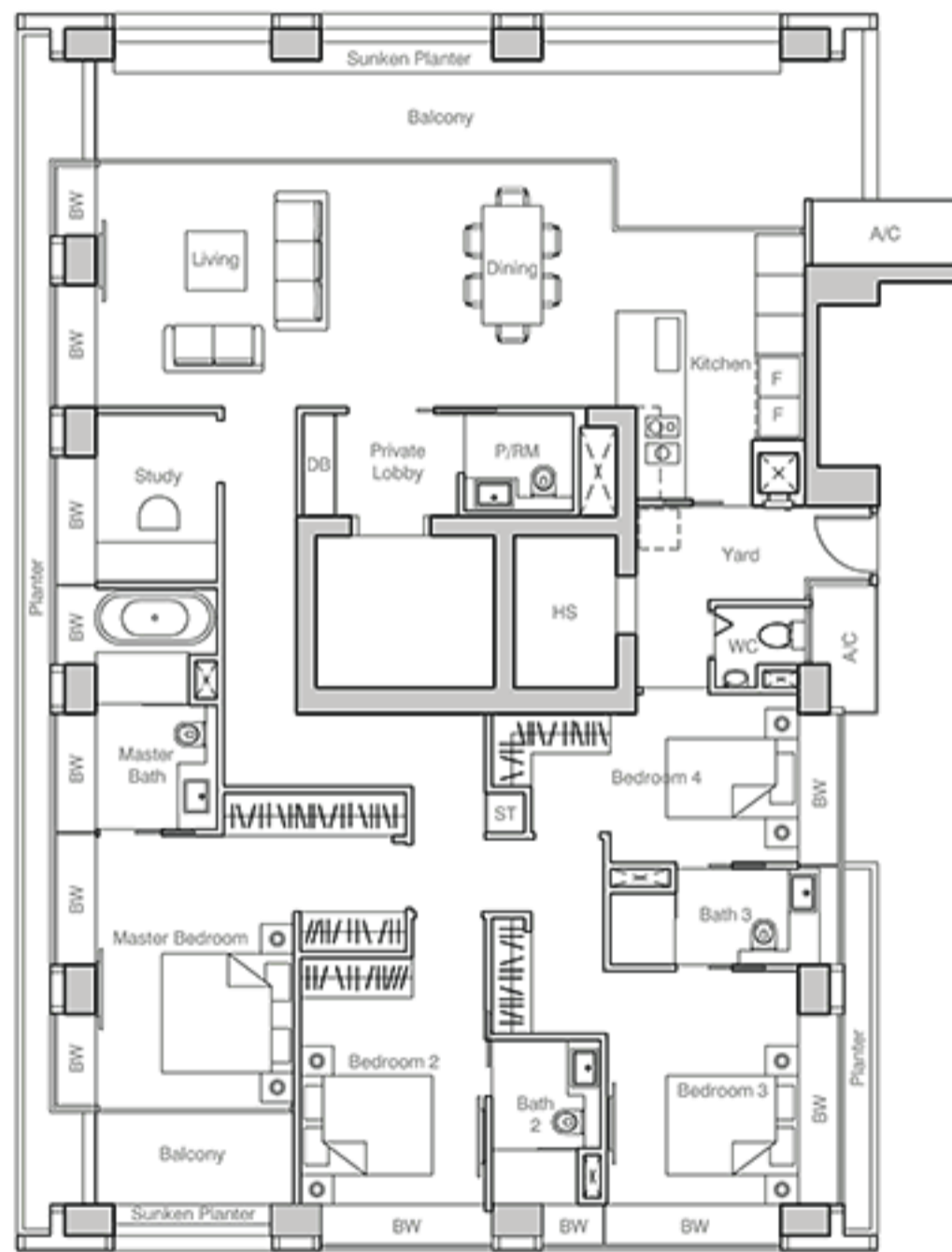
#03-03 - #10-03 (Mirror)

#12-03 - #13-03 (Mirror)

#16-03 - #23-03 (Mirror)

#04-06 - #10-06, #15-06

#21-06 - #23-06

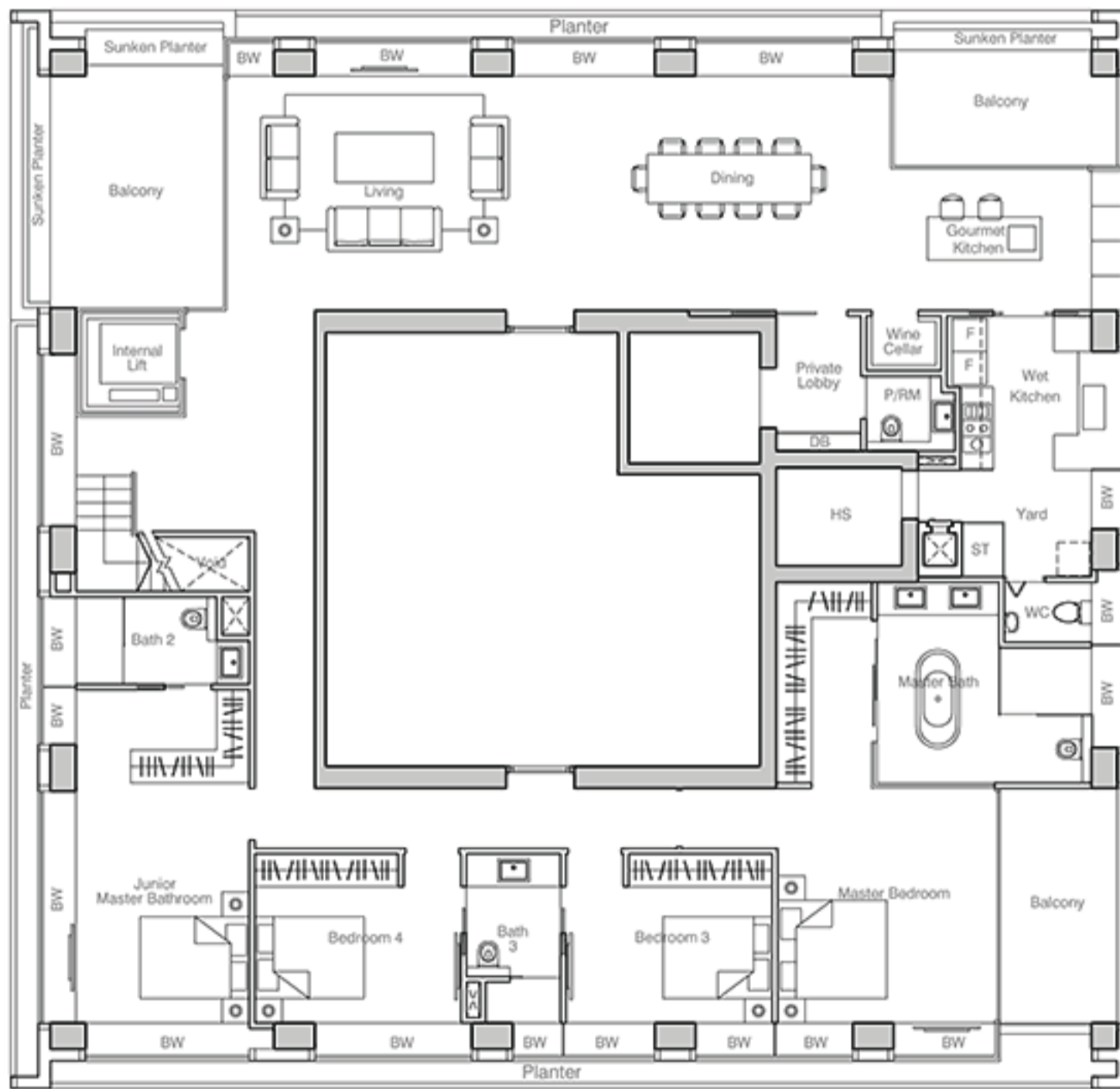


PENTHOUSE

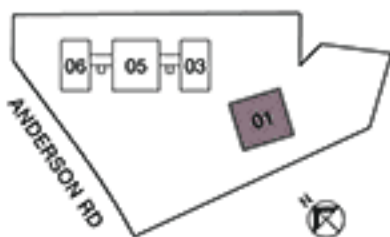
TYPE PH1

564 sqm (6,071 sq ft)

#36-01



LOWER STOREY



SKY SUITE

TYPE (SKY SUITE)

400 sqm (4,306 sq ft)

#34-05

