

SITE PLAN



 HOUSE NUMBER

 ZEN HAUS

 COSMOPOLITAN HAUS

* Open Space with Linear Park and External Road Works are subject to relevant authorities' approval.

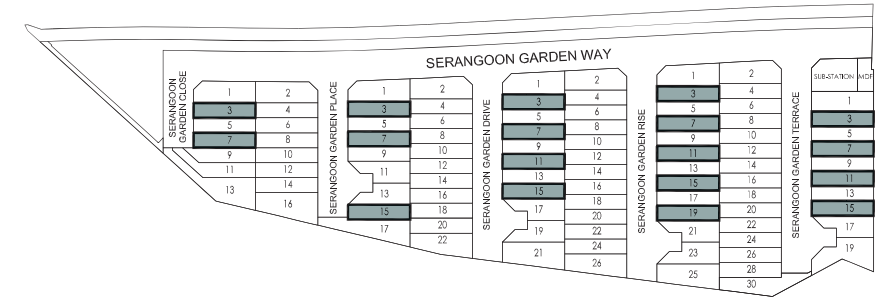


**Information Herein Subject To Changes Without Prior Notice
18 June 2012**

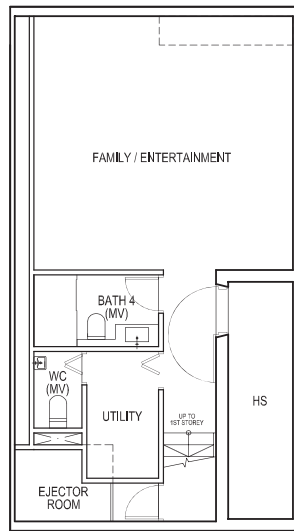
Intermediate Terrace Type A1

Land Area : 150.0 sq.m. / 1,614.6 sq.ft.

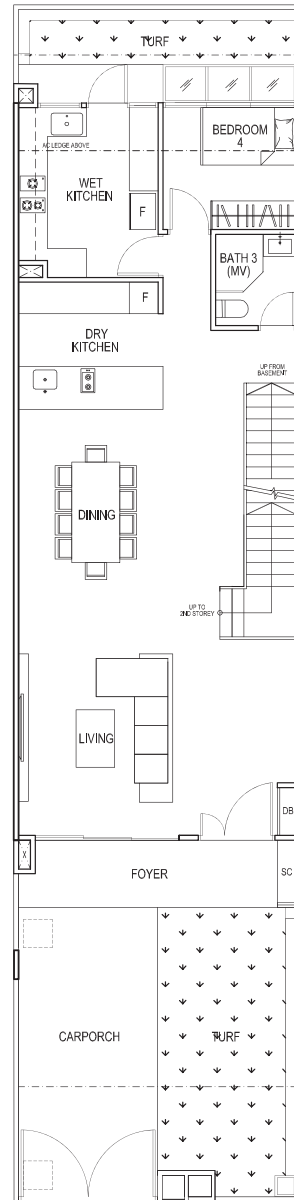
Floor Area : 338 sq.m. / 3,638 sq.ft.



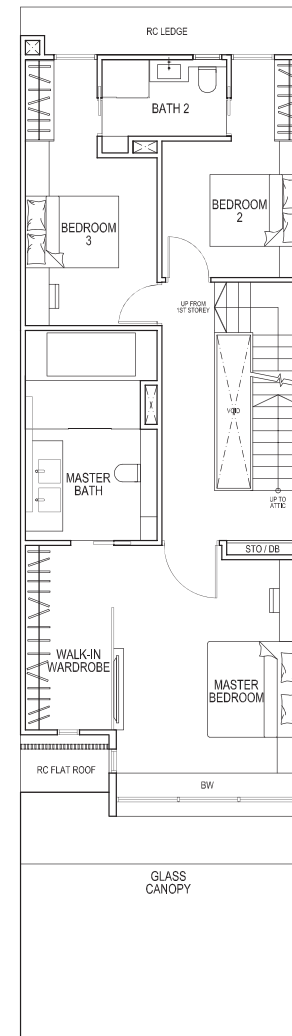
KEY PLAN



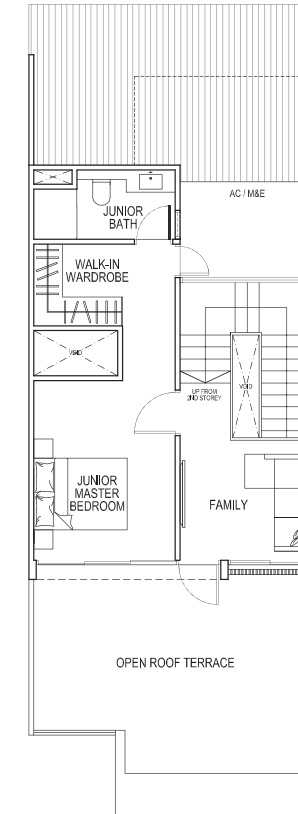
BASEMENT



1ST LEVEL



2ND LEVEL



ATTIC LEVEL

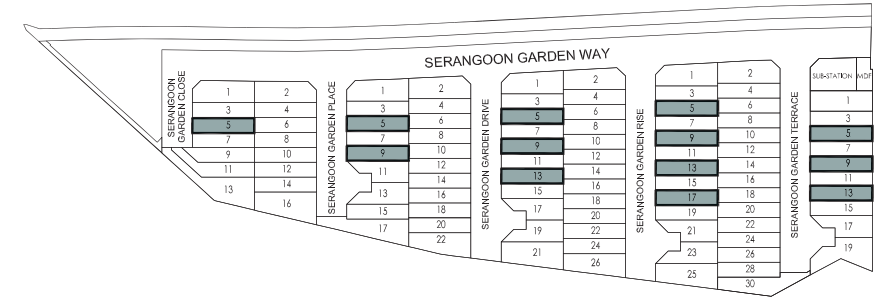
House No.:
 3, 7 Serangoon Garden Close
 3, 7, 15 Serangoon Garden Place
 3, 7, 11, 15 Serangoon Garden Drive
 3, 7, 11, 15, 19 Serangoon Garden Rise
 3, 7, 11, 15 Serangoon Garden Terrace

Note :
 Position of inspection chambers at carporch and drainage chambers is subject to finalization

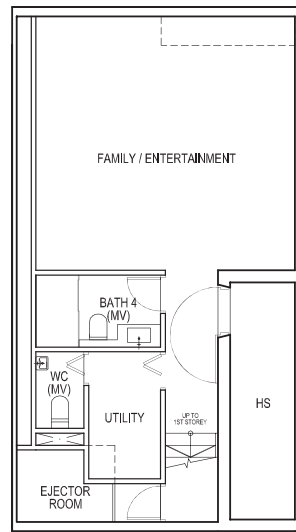


Land Area : 150.0 sq.m. / 1,614.6 sq.ft.

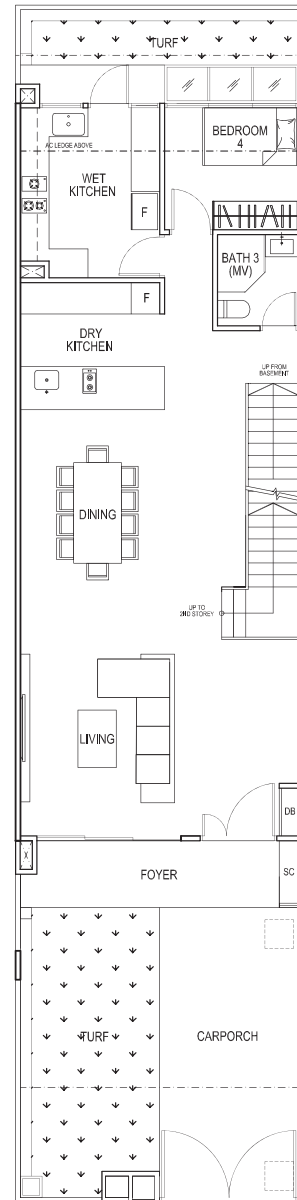
Floor Area : 338 sq.m. / 3638 sq.ft.



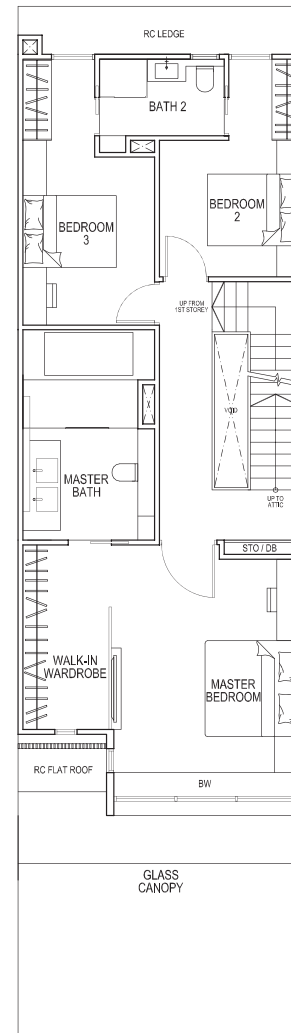
KEY PLAN



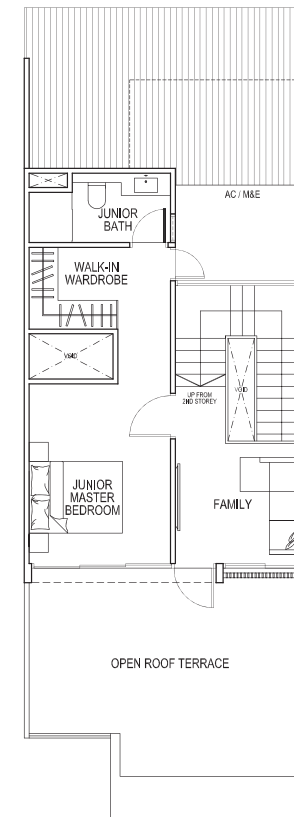
BASEMENT



1ST LEVEL



2ND LEVEL



ATTIC LEVEL

House No.:
 5 Serangoon Garden Close
 5, 9 Serangoon Garden Place
 5, 9, 13 Serangoon Garden Drive
 5, 9, 13, 17 Serangoon Garden Rise
 5, 9, 13 Serangoon Garden Terrace

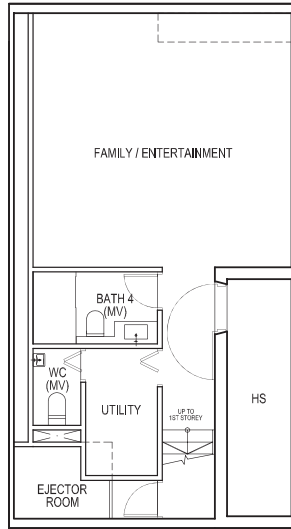


Note :
 Position of inspection chambers at carporch and drainage chambers is subject to finalization

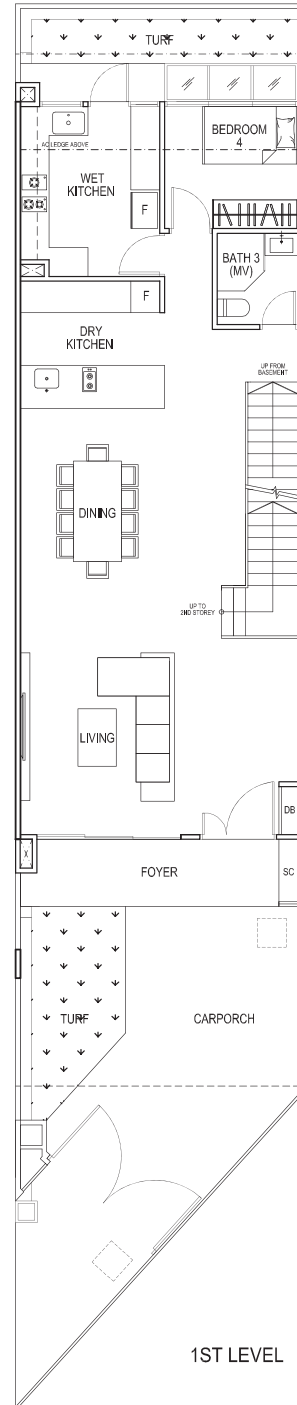
Intermediate Terrace Type A1-b

Land Area : 156.4 sq.m. / 1,683.5 sq.ft.

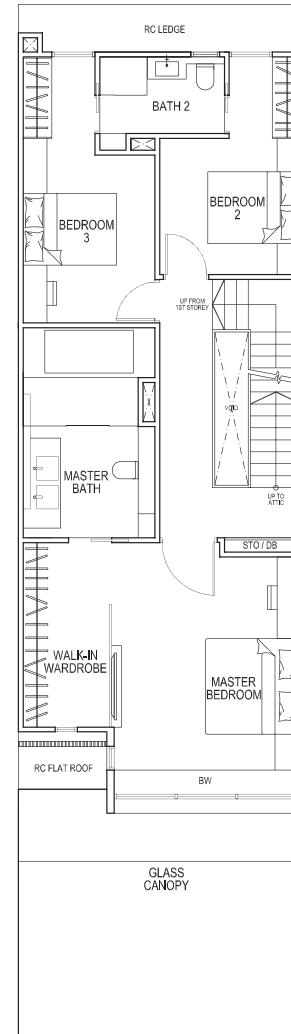
Floor Area : 341 sq.m. / 3,671 sq.ft.



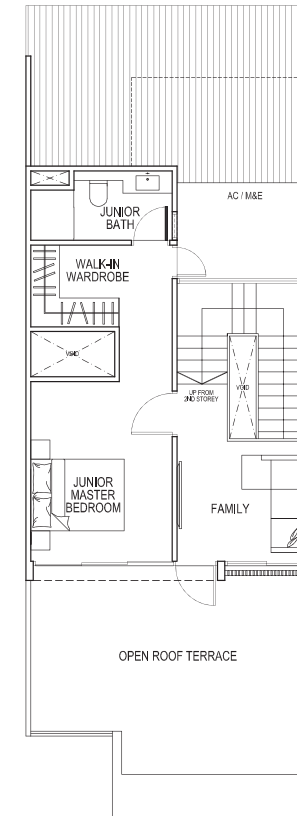
BASEMENT



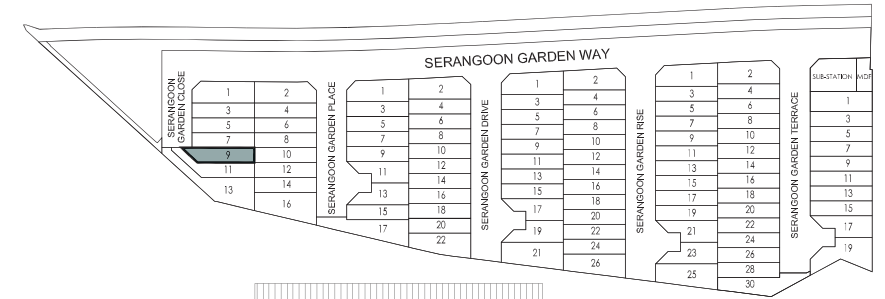
1ST LEVEL



2ND LEVEL



ATTIC LEVEL



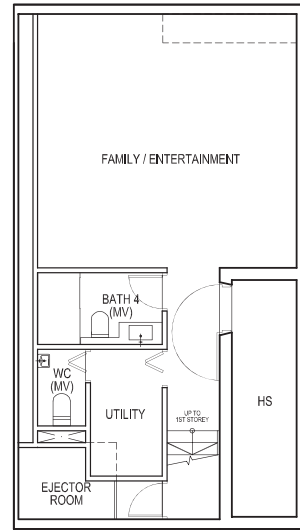
Note : Position of inspection chambers at carporch and drainage chambers is subject to finalization

House No.: 9 Serangoon Garden Close

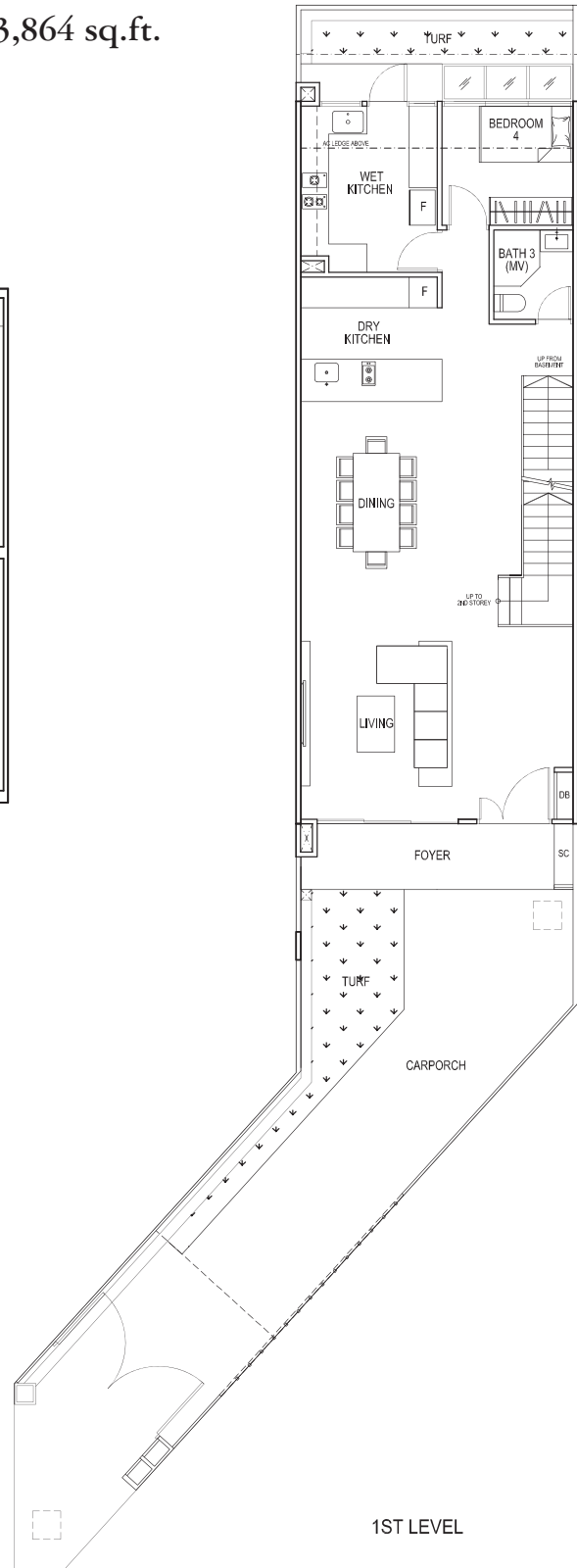


Land Area : 177.7 sq.m. / 1,912.8 sq.ft.

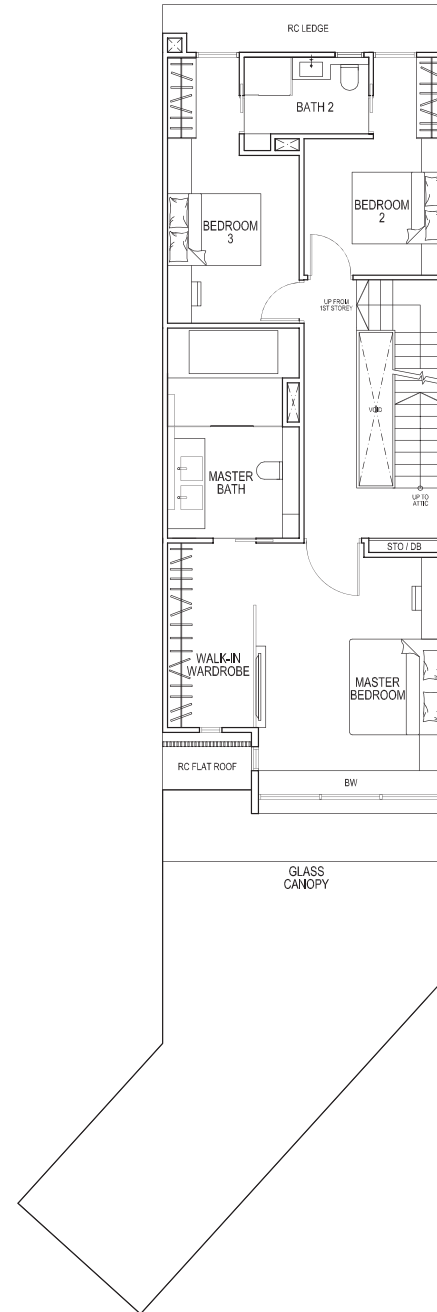
Floor Area : 359 sq.m. / 3,864 sq.ft.



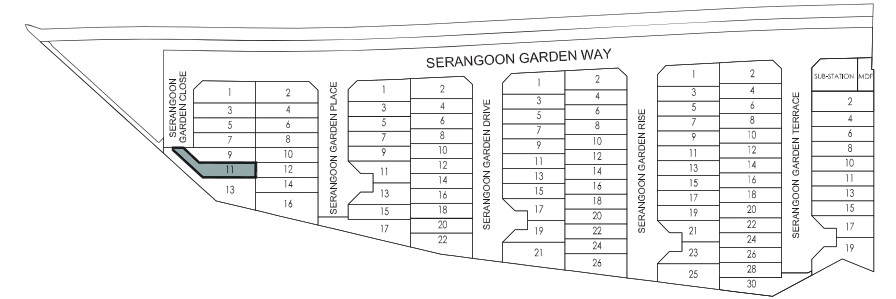
BASEMENT



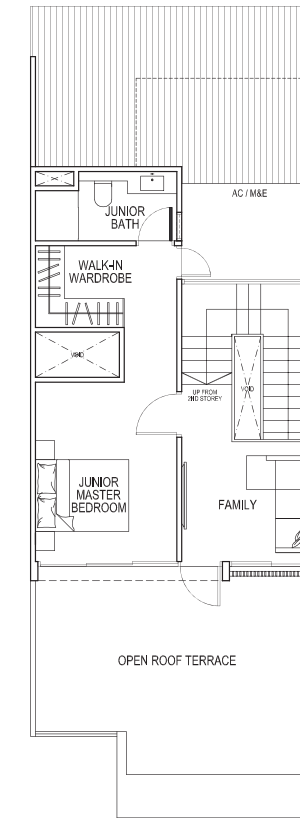
1ST LEVEL



2ND LEVEL



KEY PLAN



ATTIC LEVEL

Note : Position of inspection chambers at carporch and drainage chambers is subject to finalization

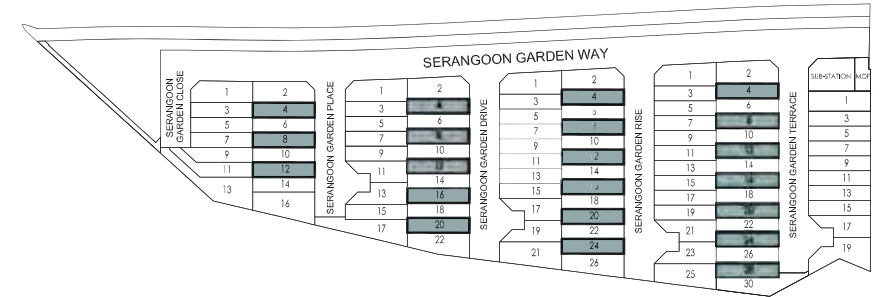
House No.: 11 Serangoon Garden Close



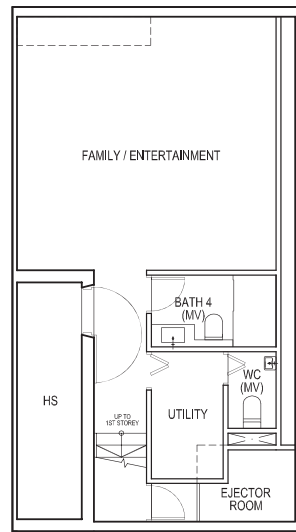
Intermediate Terrace Type A2

Land Area : 150.0 sq.m. / 1,614.6 sq.ft.

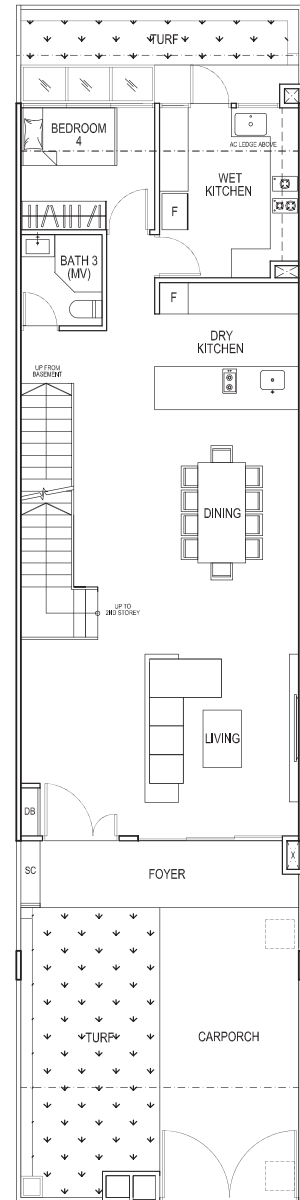
Floor Area : 334 sq.m. / 3,595 sq.ft.



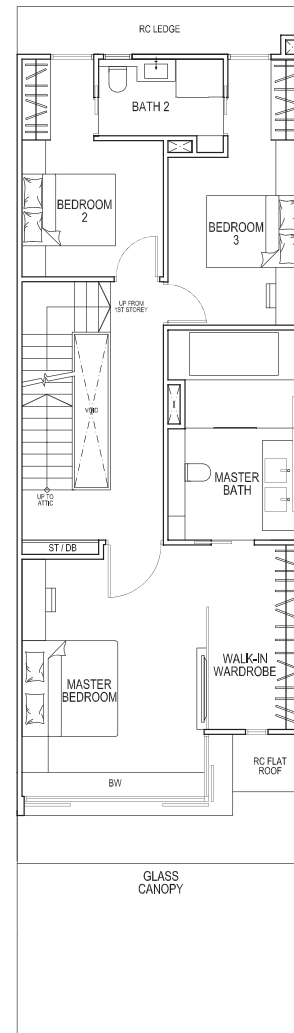
KEY PLAN



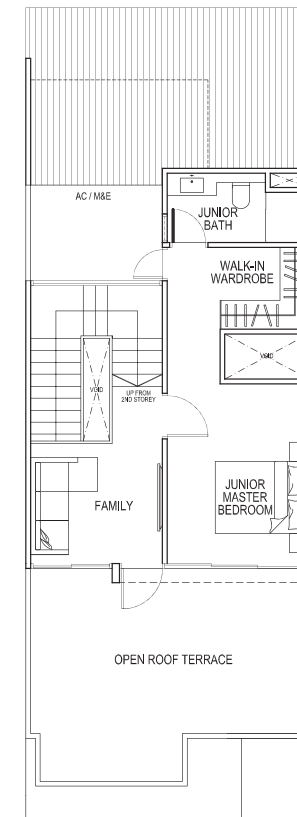
BASEMENT



1ST LEVEL



2ND LEVEL



ATTIC LEVEL

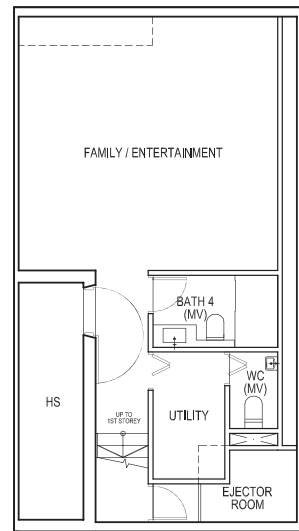
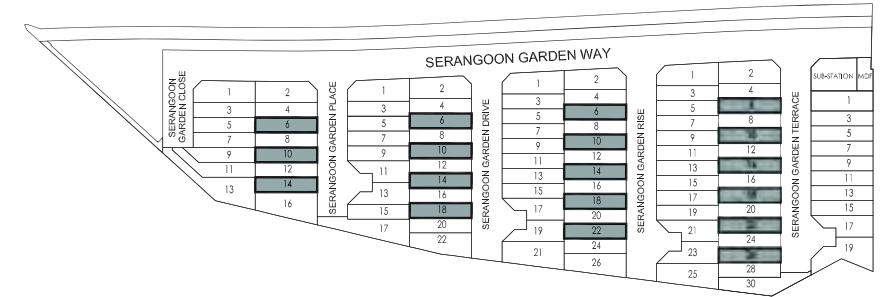
House No.:
 4, 8, 12 Serangoon Garden Place
 4, 8, 12, 16, 20 Serangoon Garden Drive
 4, 8, 12, 16, 20, 24 Serangoon Garden Rise
 4, 8, 12, 16, 20, 24, 28 Serangoon Garden Terrace

Note :
 Position of inspection chambers at carporch and drainage chambers is subject to finalization

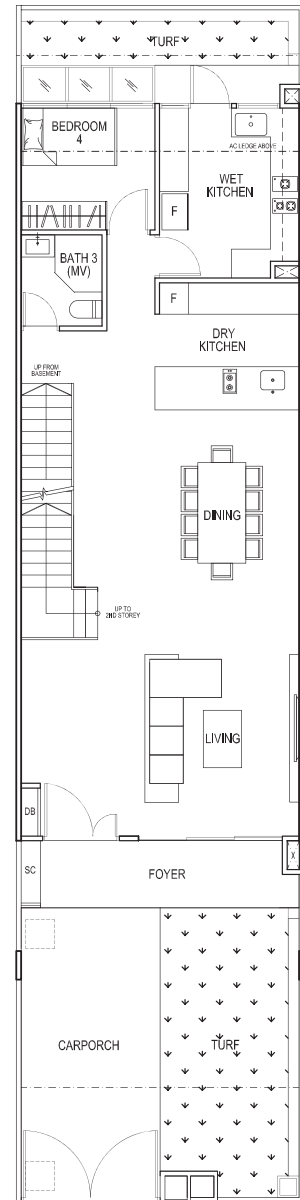


Land Area : 150.0 sq.m. / 1,614.6 sq.ft.

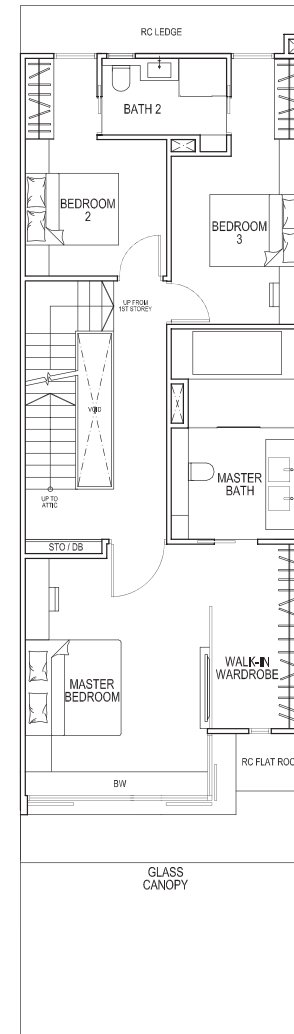
Floor Area : 334 sq.m. / 3,595 sq.ft.



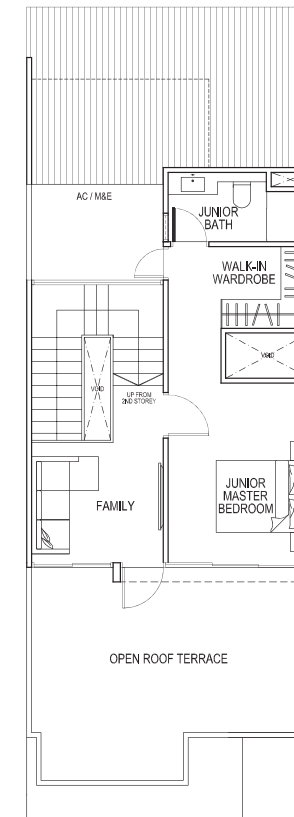
BASEMENT



1ST LEVEL



2ND LEVEL



ATTIC LEVEL

House No.:
 6, 10, 14 Serangoon Garden Place
 6, 10, 14, 18, Serangoon Garden Drive
 6, 10, 14, 18, 22 Serangoon Garden Rise
 6, 10, 14, 18, 22, 26 Serangoon Garden Terrace

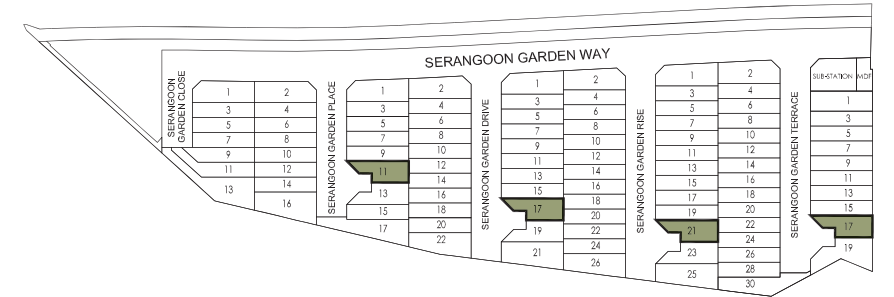


Note :
 Position of inspection chambers at carporch and drainage chambers is subject to finalization

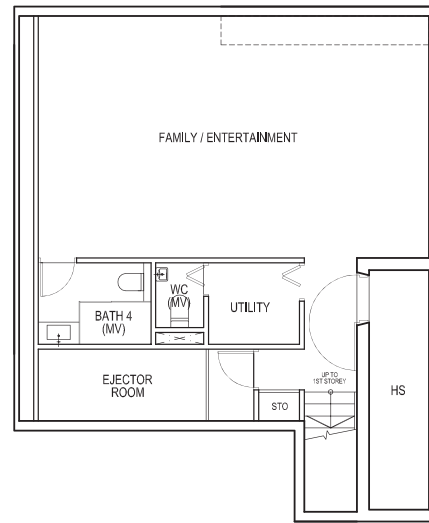
Intermediate Terrace Type B1

Land Area : 168.8 sq.m. / 1,817.0 sq.ft.

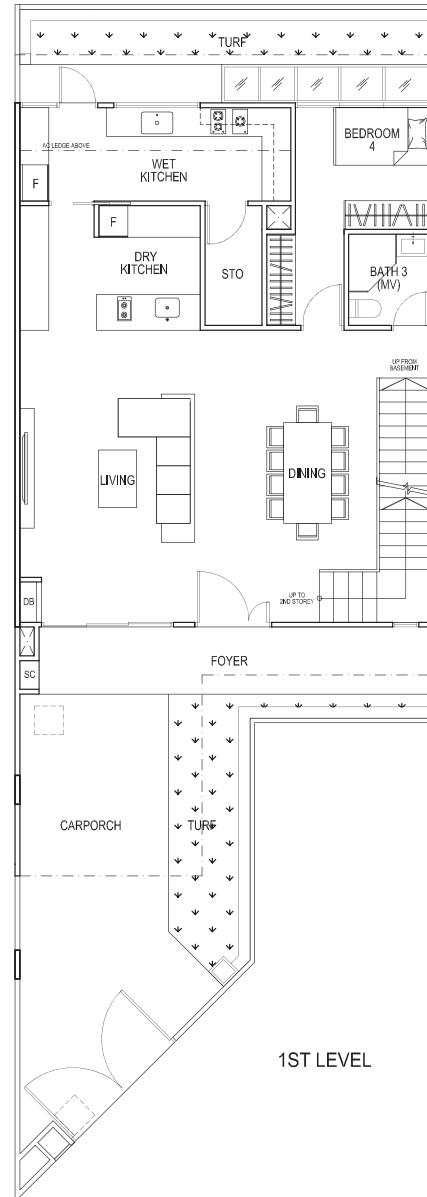
Floor Area : 364 sq.m. / 3,918 sq.ft.



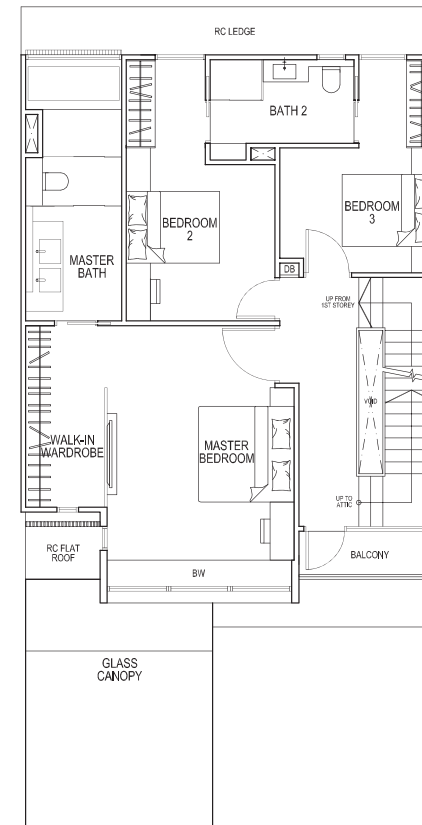
KEY PLAN



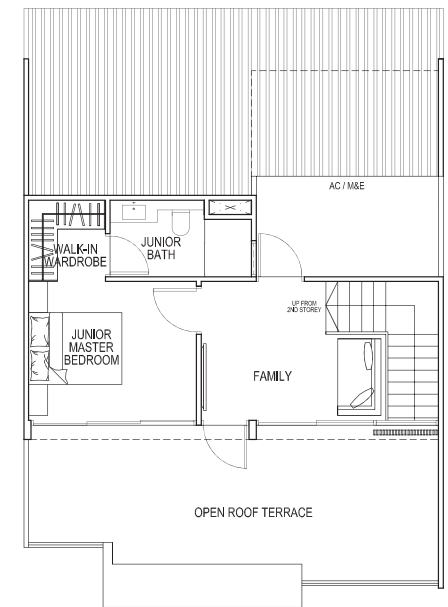
BASEMENT



1ST LEVEL



2ND LEVEL



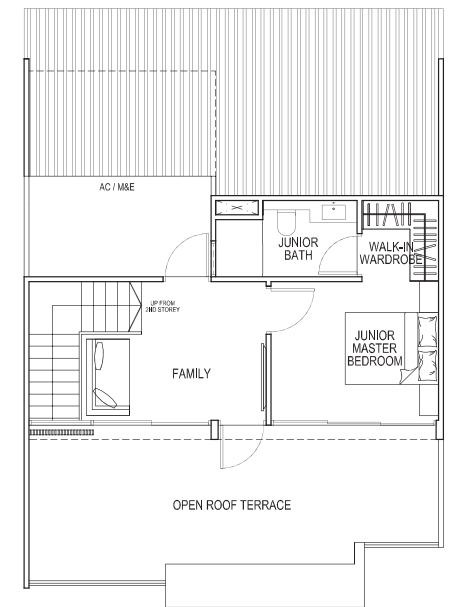
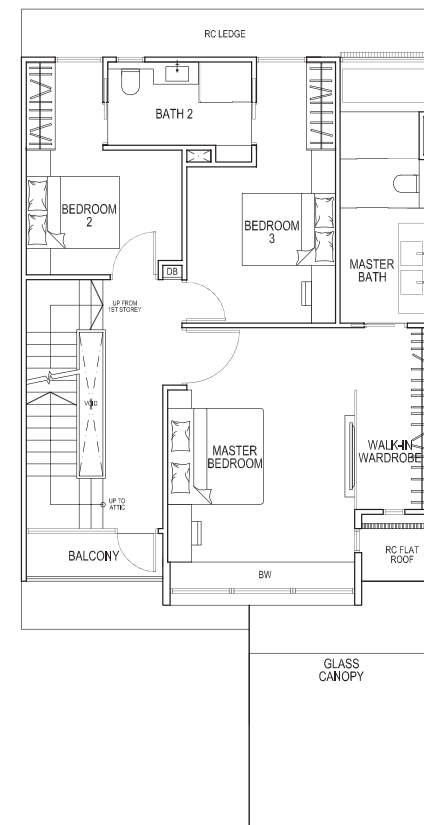
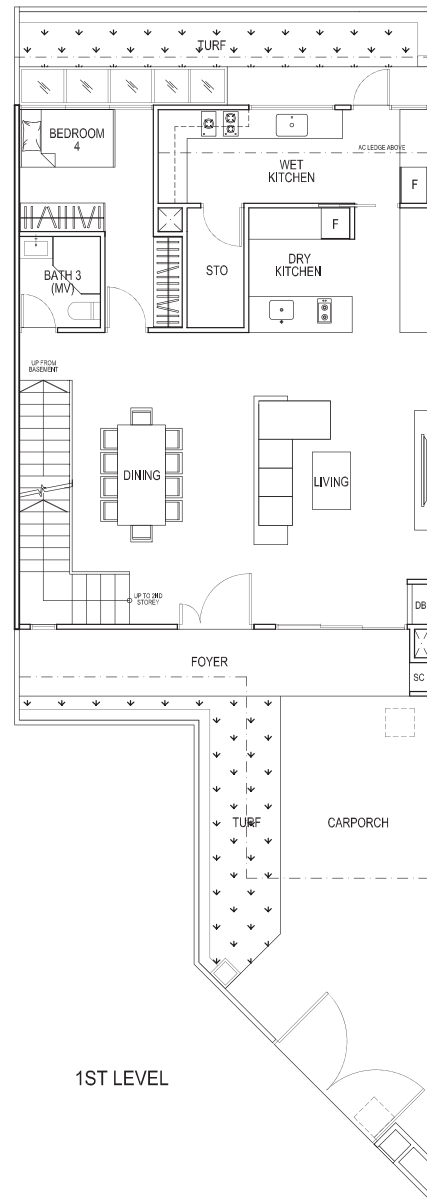
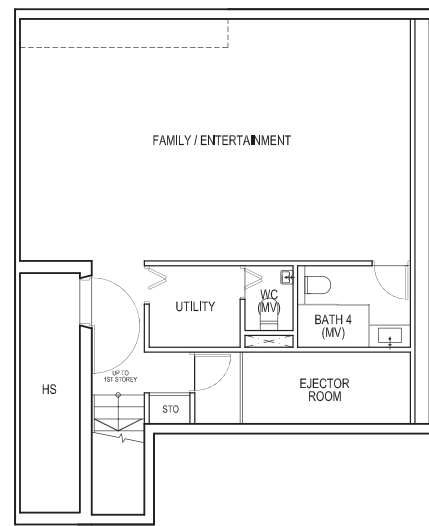
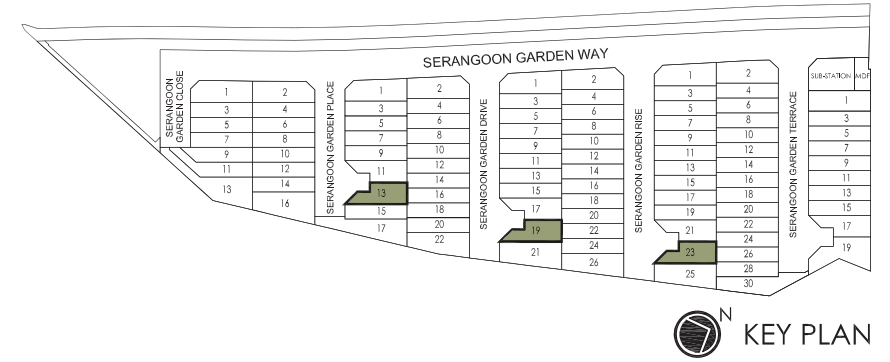
ATTIC LEVEL

Note:
Position of inspection chambers at carporch and drainage chambers is subject to finalization

House No.:
11 Serangoon Garden Place
17 Serangoon Garden Drive
21 Serangoon Garden Rise
17 Serangoon Garden Terrace



Land Area : 168.8 sq.m. / 1,817.0 sq.ft.
 Floor Area : 364 sq.m. / 3,918 sq.ft.



House No.:
 13 Serangoon Garden Place
 19 Serangoon Garden Drive
 23 Serangoon Garden Rise

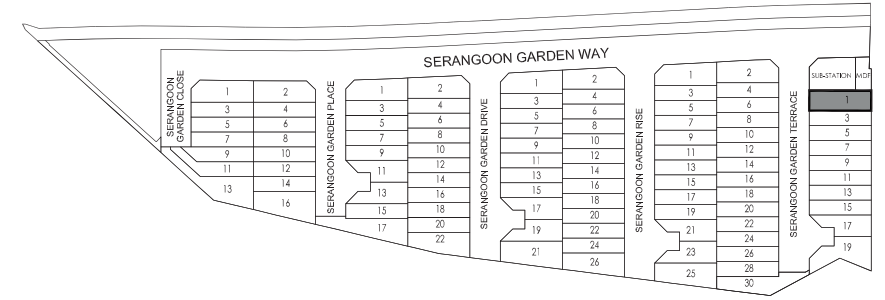


Note:
 Position of inspection chambers at carporch and drainage chambers is subject to finalization

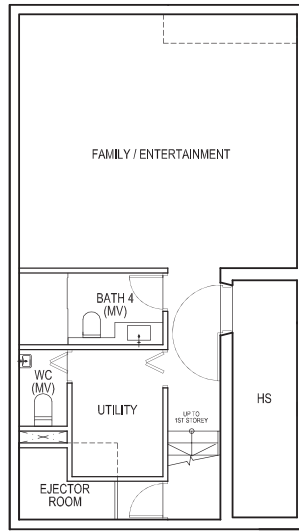
Corner Terrace Type C1

Land Area : 202.5 sq.m. / 2,179.7 sq.ft.

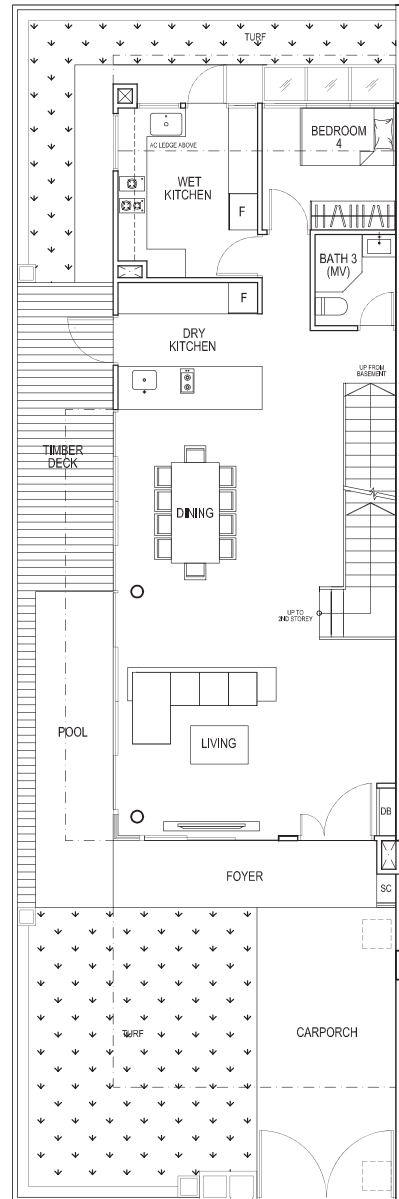
Floor Area : 344 sq.m. / 3,703 sq.ft.



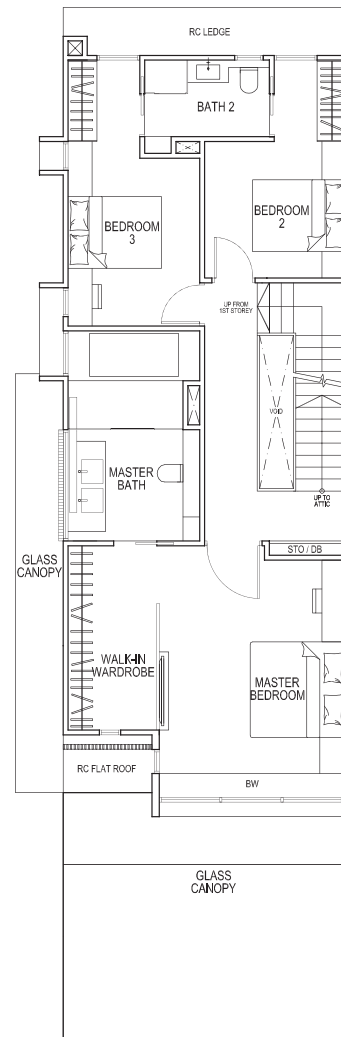
KEY PLAN



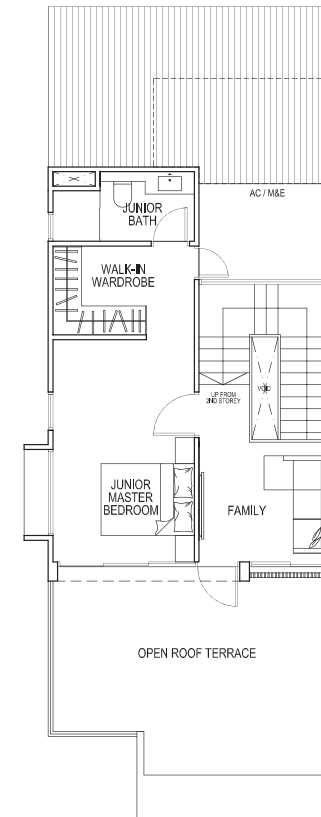
BASEMENT



1ST LEVEL



2ND LEVEL



ATTIC LEVEL

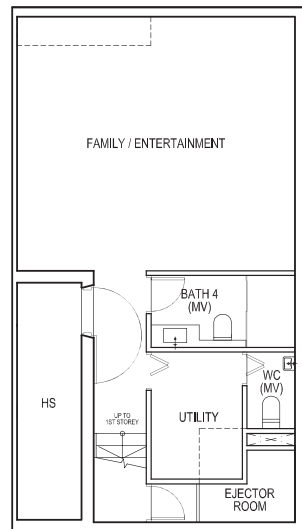
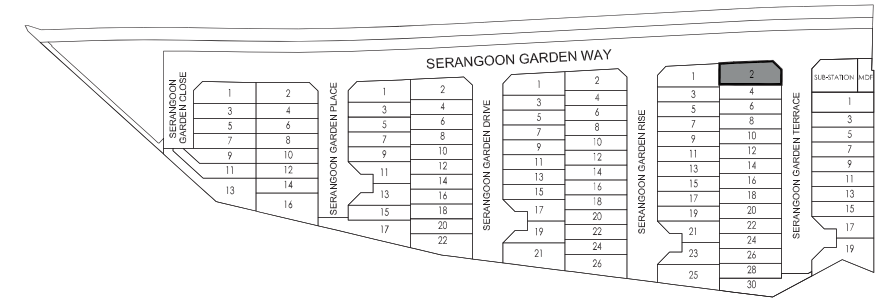
House No.:
1 Serangoon Garden Terrace

Note :
Position of inspection chambers at carporch and drainage chambers is subject to finalization

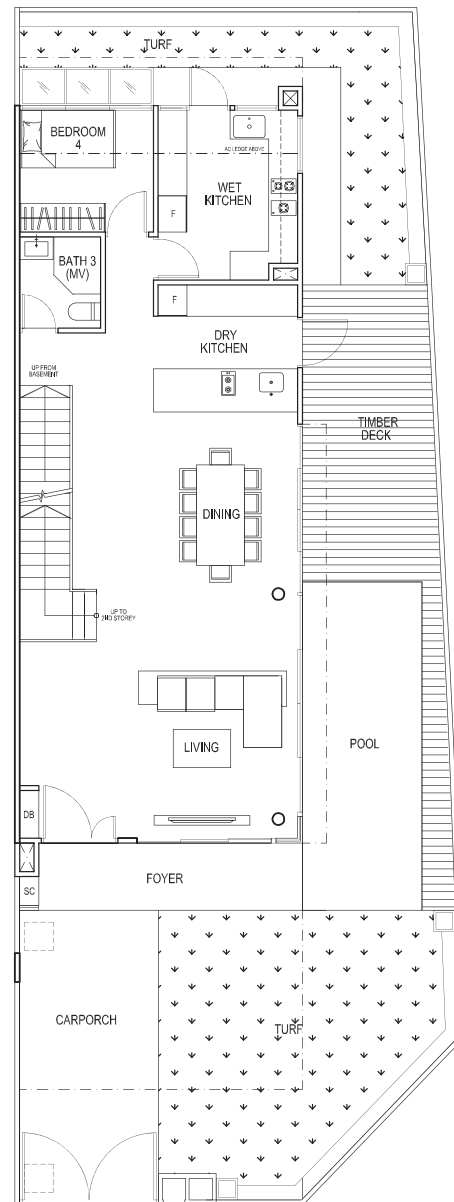


Land Area : 218.9 sq.m. / 2,356.2 sq.ft.

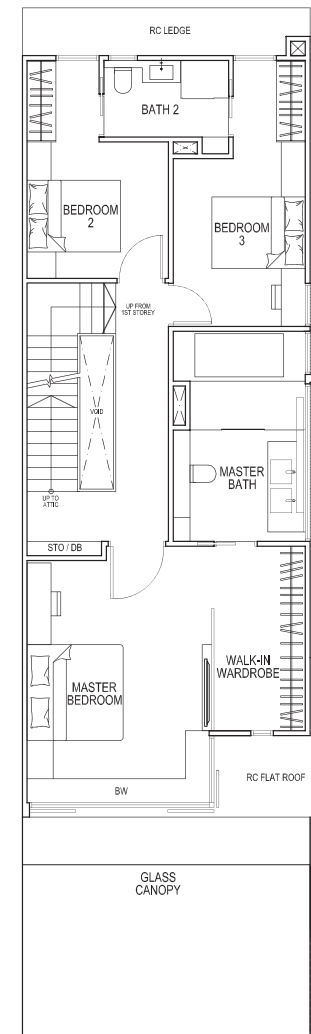
Floor Area : 340 sq.m. / 3,660 sq.ft.



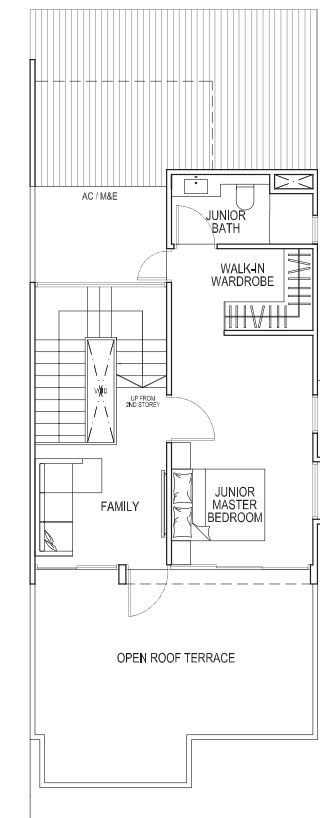
BASEMENT



1ST LEVEL



2ND LEVEL



ATTIC LEVEL

Note : Position of inspection chambers at carporch and drainage chambers is subject to finalization

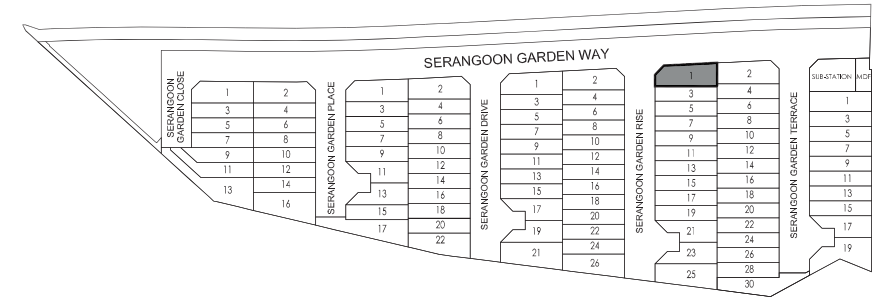
House No.:
2 Serangoon Garden Terrace



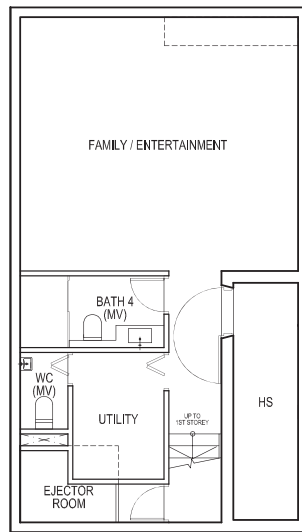
Corner Terrace Type C3

Land Area : 213.0 sq.m. / 2,292.7 sq.ft.

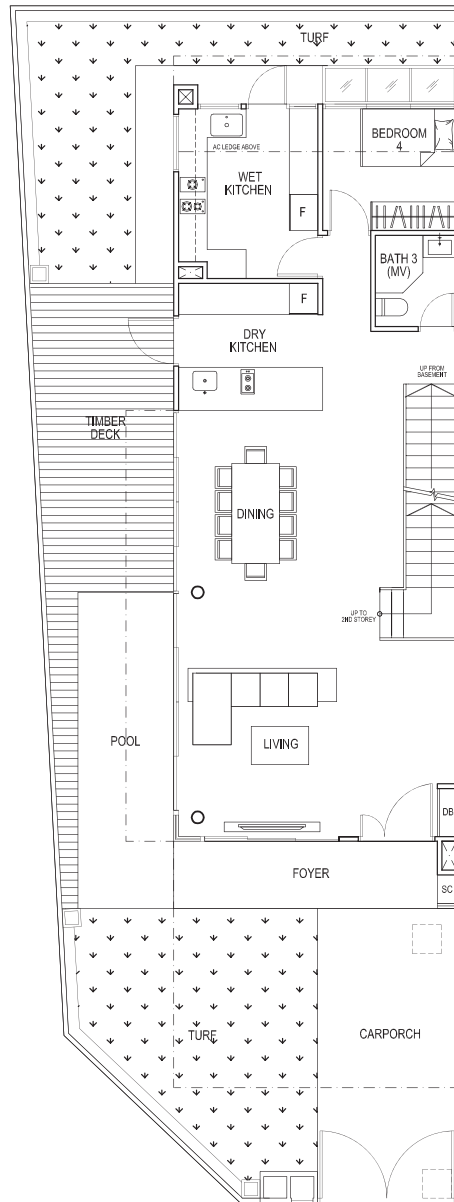
Floor Area : 344 sq.m. / 3,703 sq.ft.



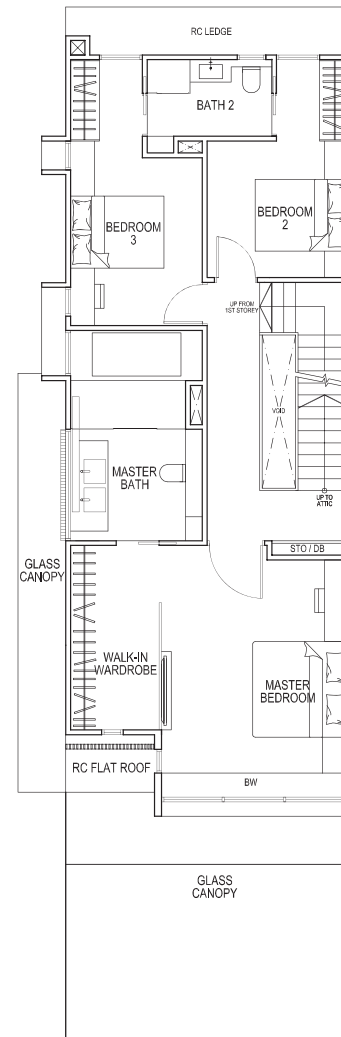
KEY PLAN



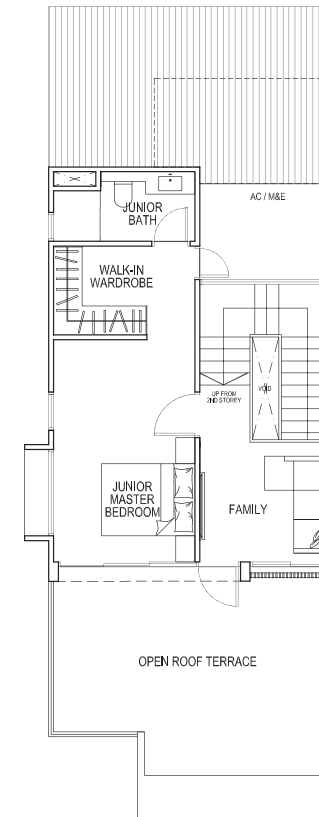
BASEMENT



1ST LEVEL



2ND LEVEL



ATTIC LEVEL

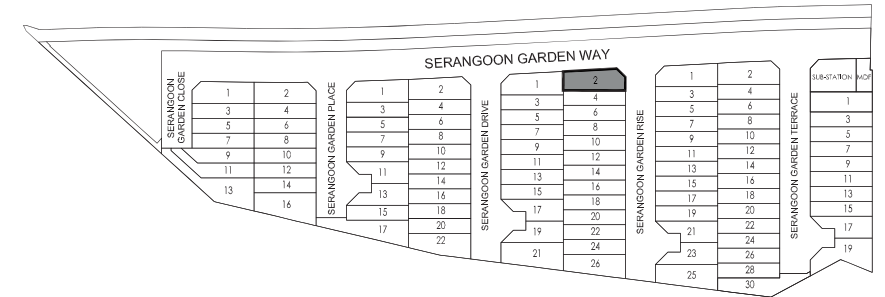
Note : Position of inspection chambers at carporch and drainage chambers is subject to finalization

House No.:
1 Serangoon Garden Rise

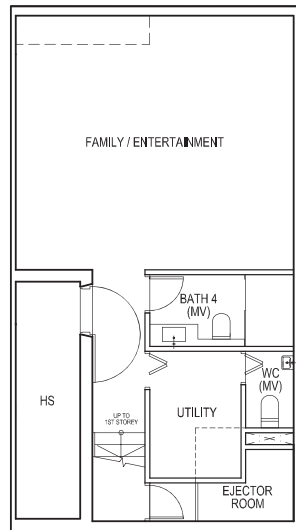


Land Area : 202.1 sq.m. / 2,175.4 sq.ft.

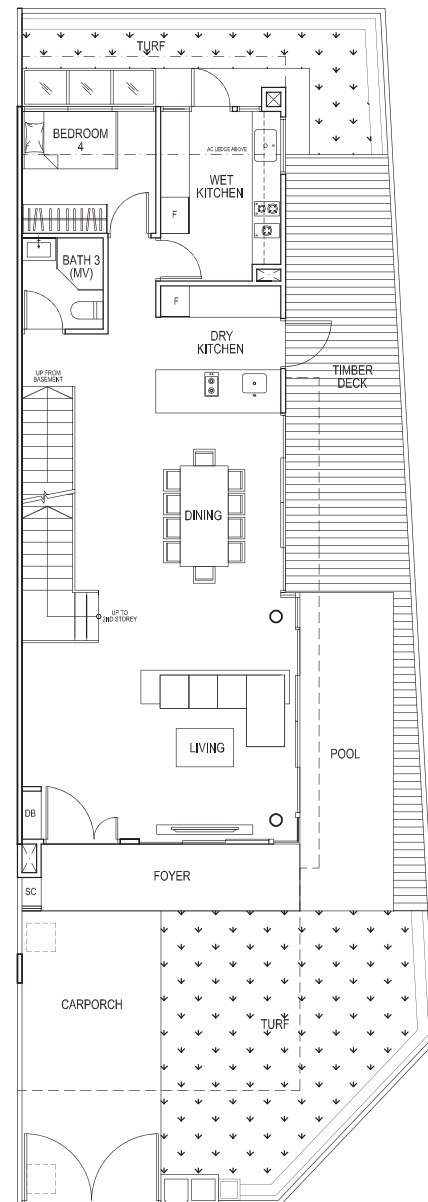
Floor Area : 328 sq.m. / 3,531 sq.ft.



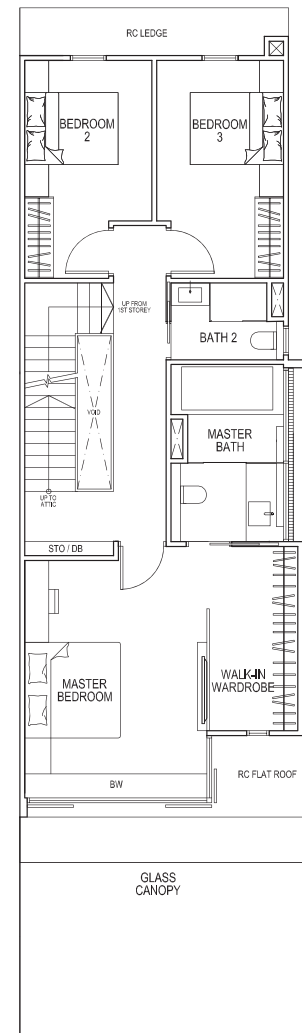
KEY PLAN



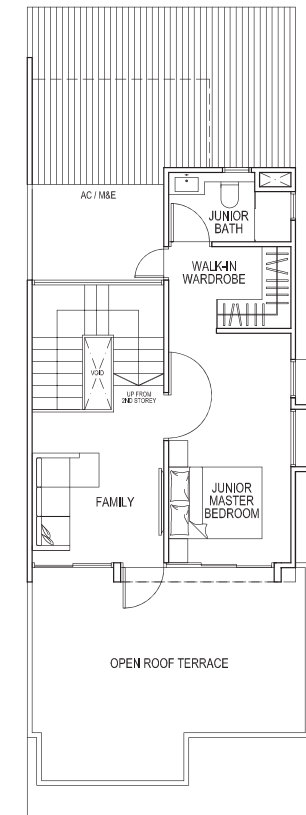
BASEMENT



1ST LEVEL



2ND LEVEL



ATTIC LEVEL

House No.:
2 Serangoon Garden Rise

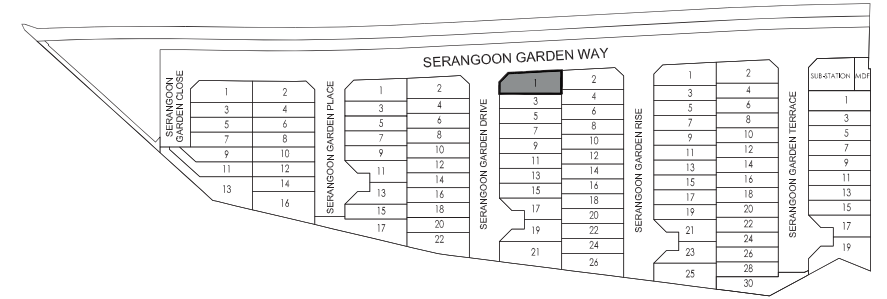
Note :
Position of inspection chambers at carporch and drainage chambers is subject to finalization



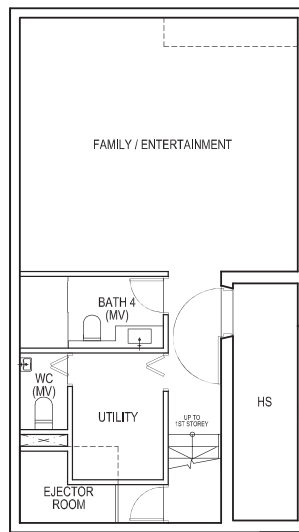
Corner Terrace Type C5

Land Area : 213.0 sq.m. / 2,292.7 sq.ft.

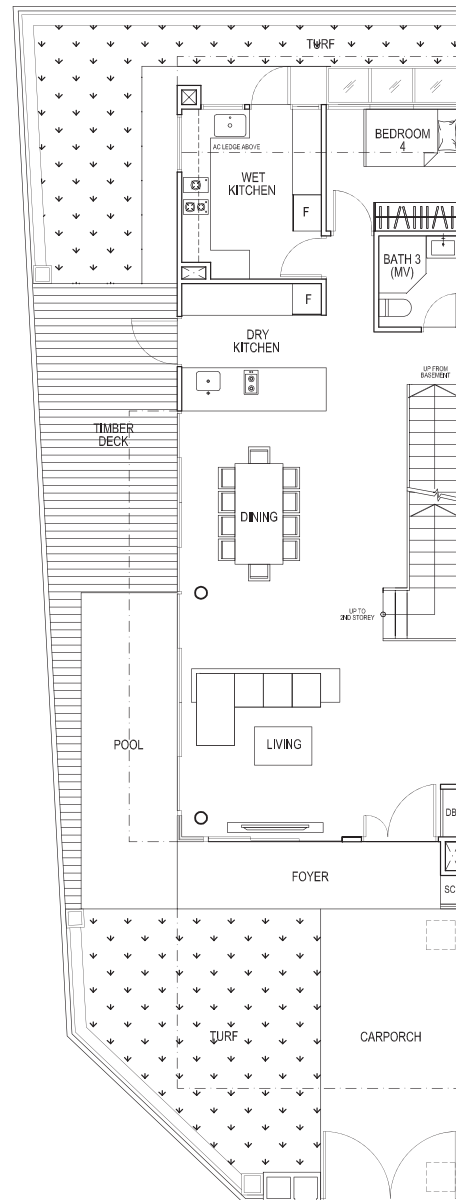
Floor Area : 344 sq.m. / 3,703 sq.ft.



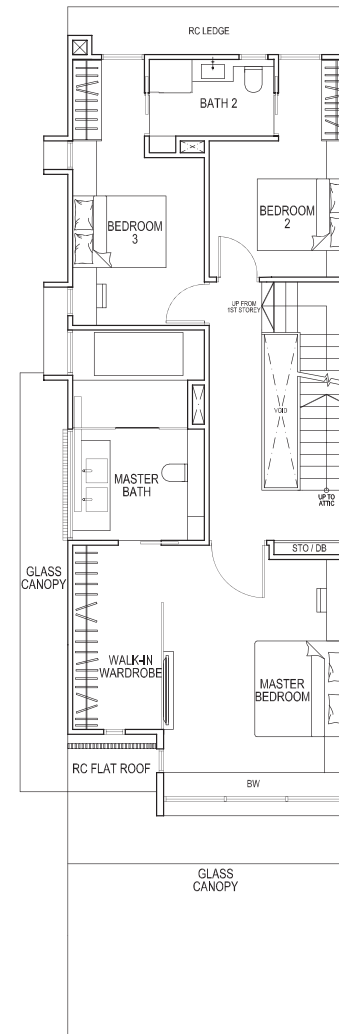
 KEY PLAN



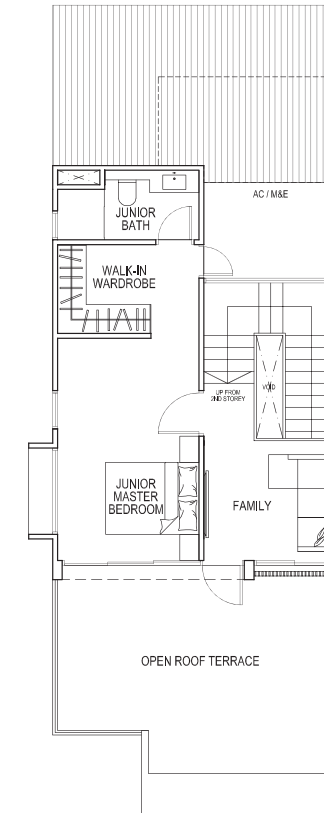
BASEMENT



1ST LEVEL



2ND LEVEL



ATTIC LEVEL

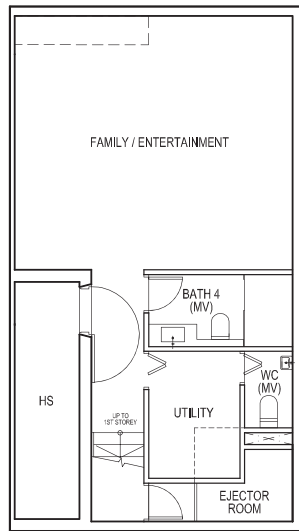
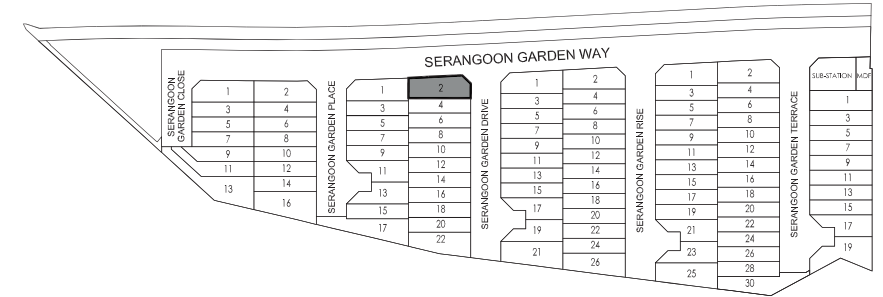
Note :
Position of inspection chambers at carporch and drainage chambers is subject to finalization

House No.:
1 Serangoon Garden Drive

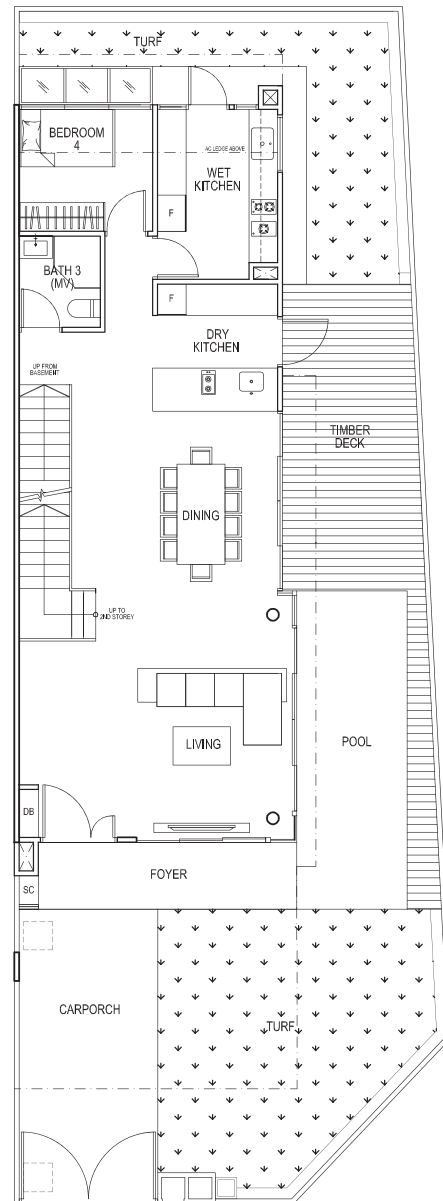


Land Area : 211.6 sq.m. / 2,277.7 sq.ft.

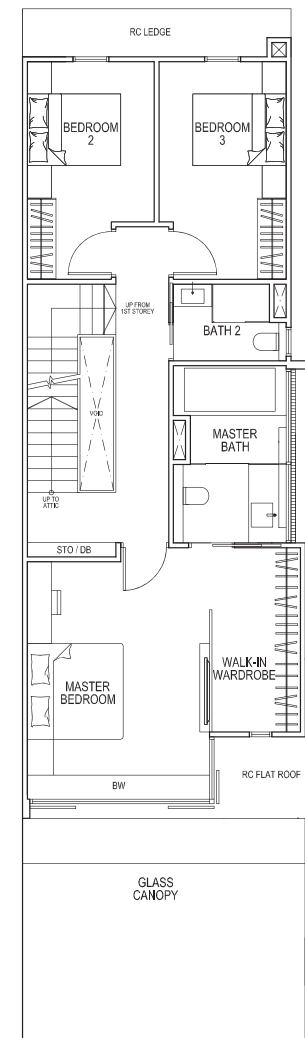
Floor Area : 328 sq.m. / 3,531 sq.ft.



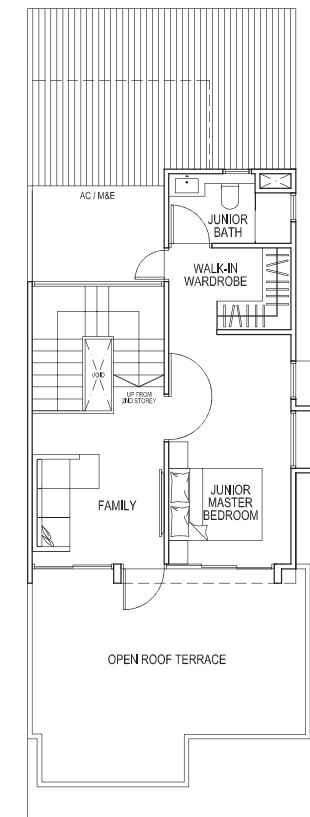
BASEMENT



1ST LEVEL



2ND LEVEL



ATTIC LEVEL

House No.:
2 Serangoon Garden Drive

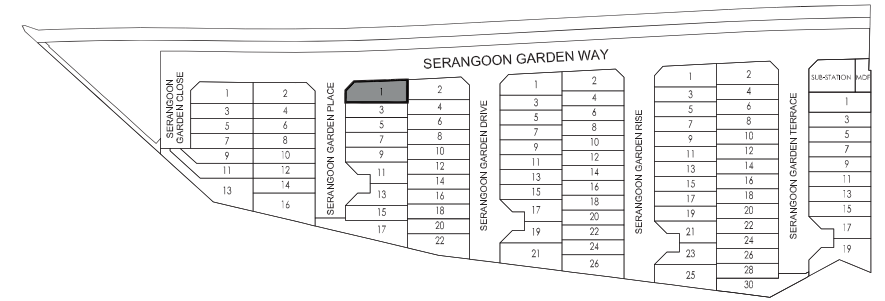
Note:
Position of inspection chambers at carporch and drainage chambers is subject to finalization



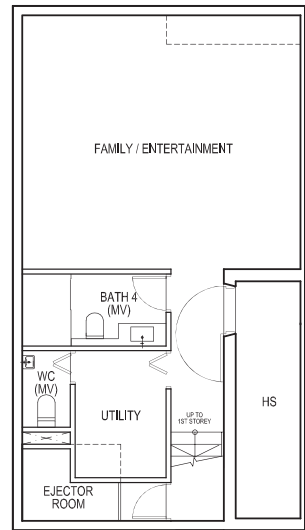
Corner Terrace Type C7

Land Area : 211.0 sq.m. / 2,271.2 sq.ft.

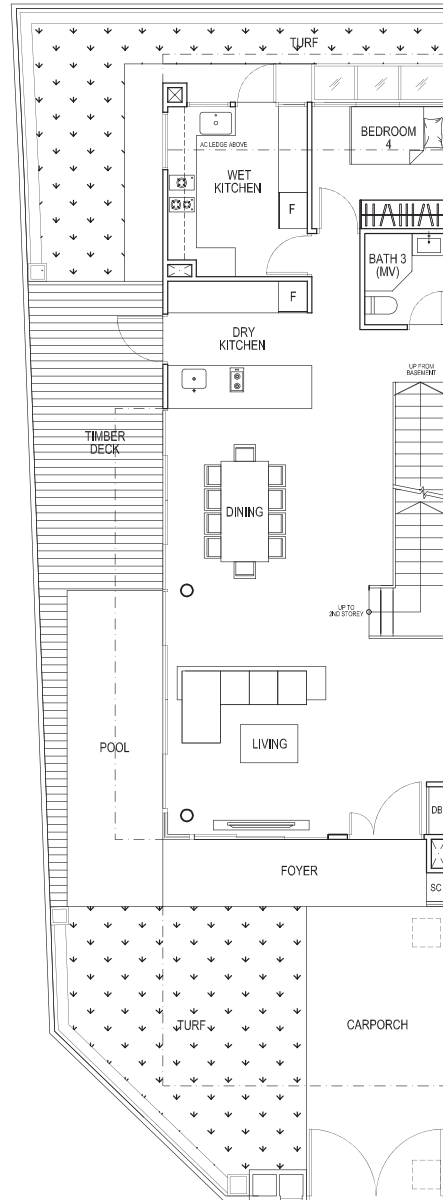
Floor Area : 344 sq.m. / 3,703 sq.ft.



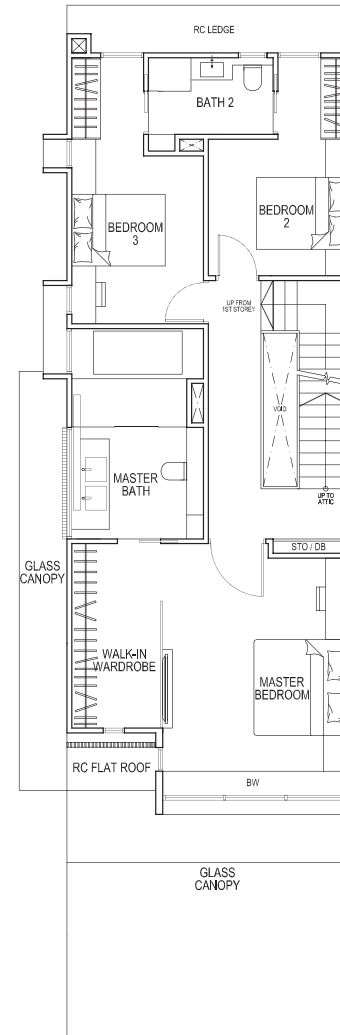
KEY PLAN



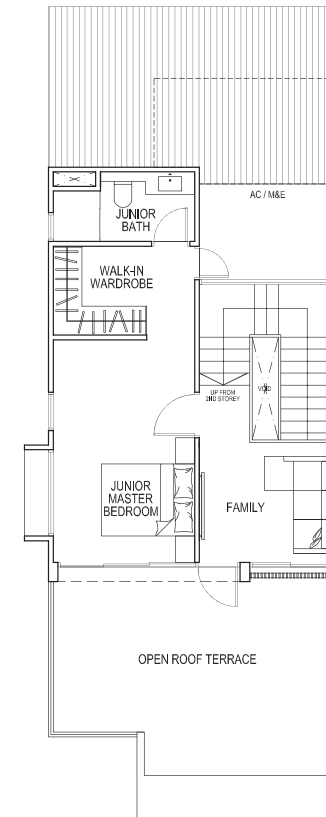
BASEMENT



1ST LEVEL



2ND LEVEL



ATTIC LEVEL

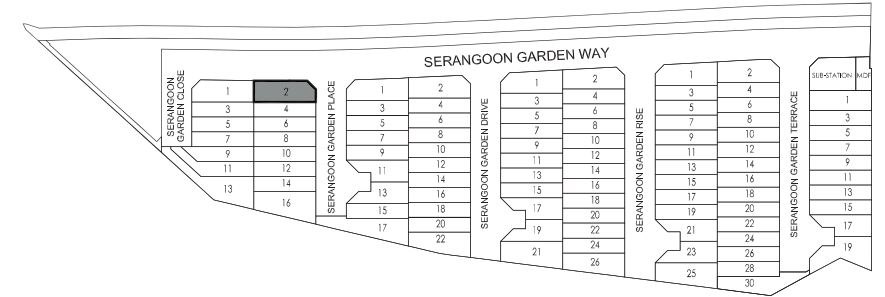
Note :
Position of inspection chambers at carporch and drainage chambers is subject to finalization

House No.:
1 Serangoon Garden Place

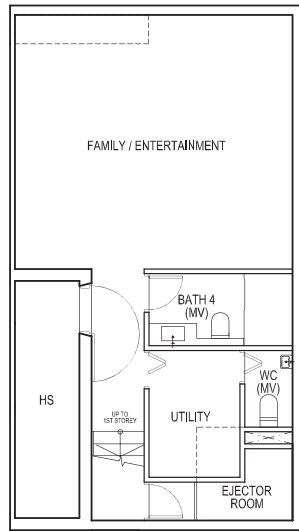


Land Area : 207.5 sq.m. / 2,233.5 sq.ft.

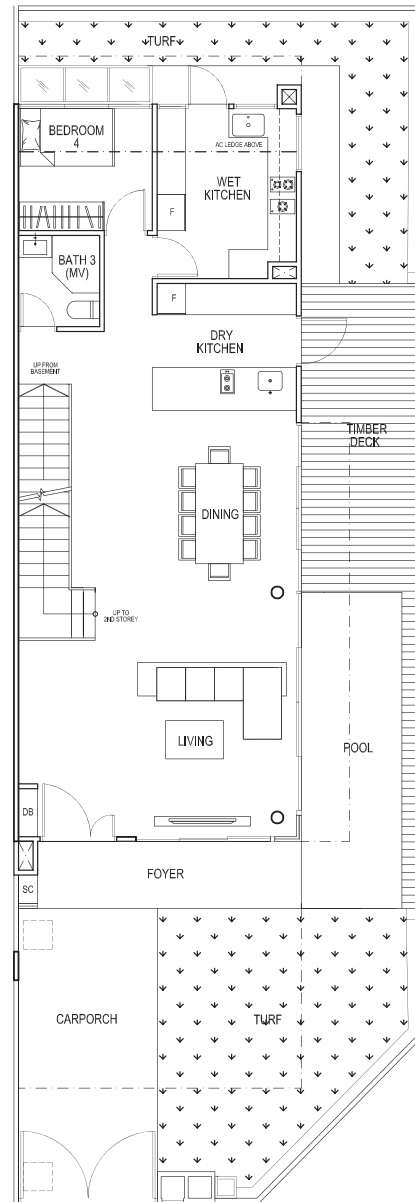
Floor Area : 340 sq.m. / 3,660 sq.ft.



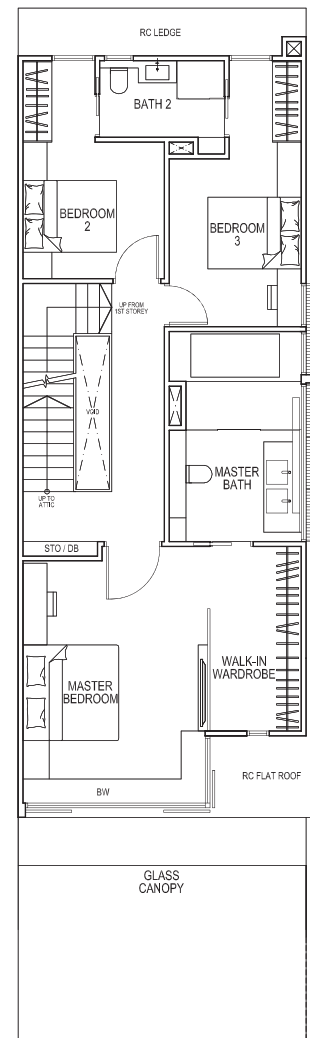
KEY PLAN



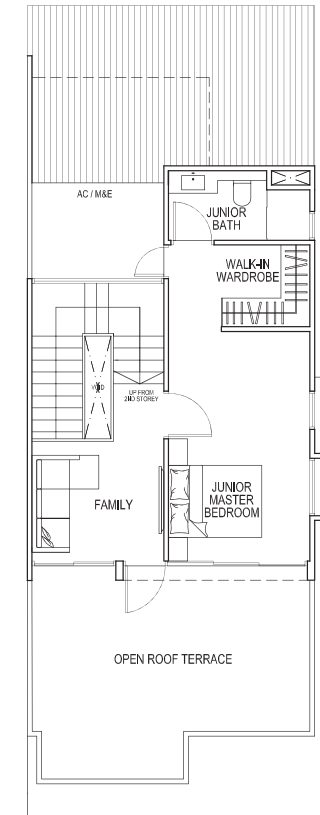
BASEMENT



1ST LEVEL



2ND LEVEL



ATTIC LEVEL

Note :
Position of inspection chambers at carporch and drainage chambers is subject to finalization

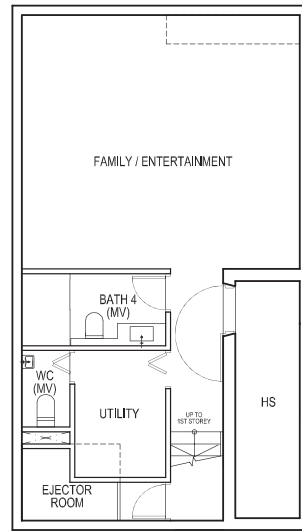
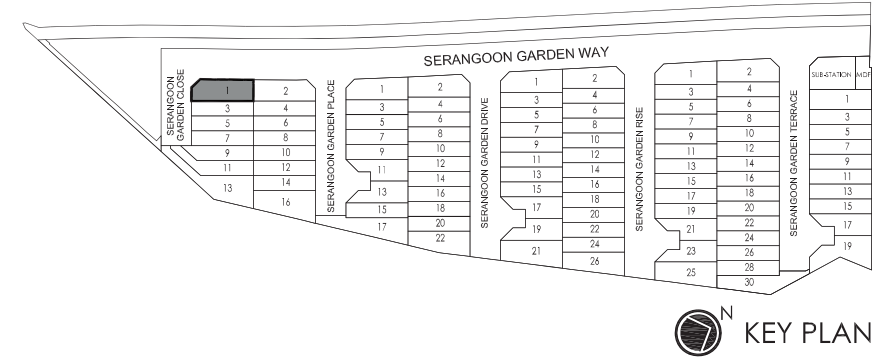
House No.:
2 Serangoon Garden Place



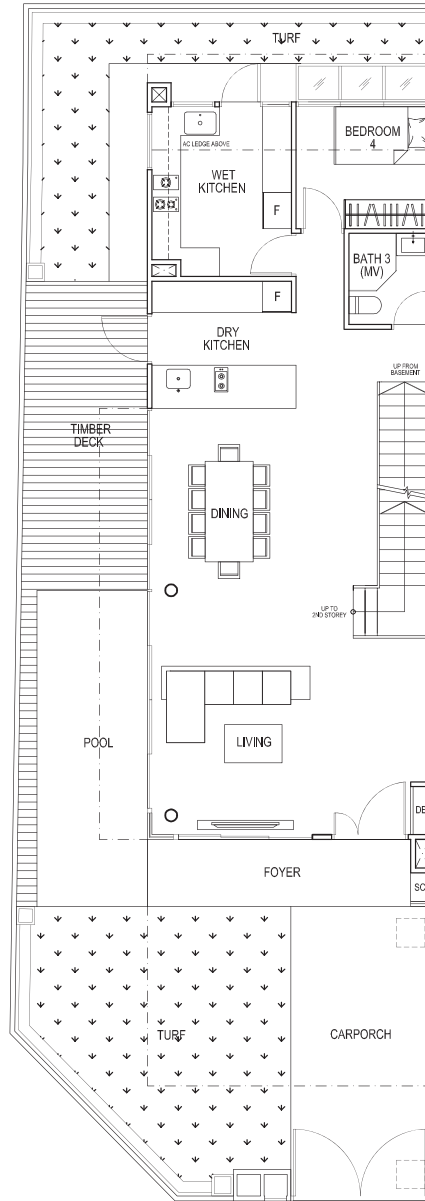
Corner Terrace Type C9

Land Area : 212.2 sq.m. / 2,284.1 sq.ft.

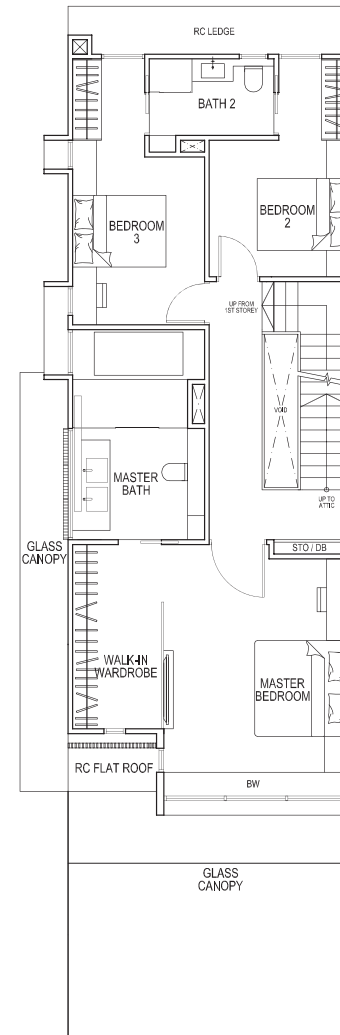
Floor Area : 344 sq.m. / 3,703 sq.ft.



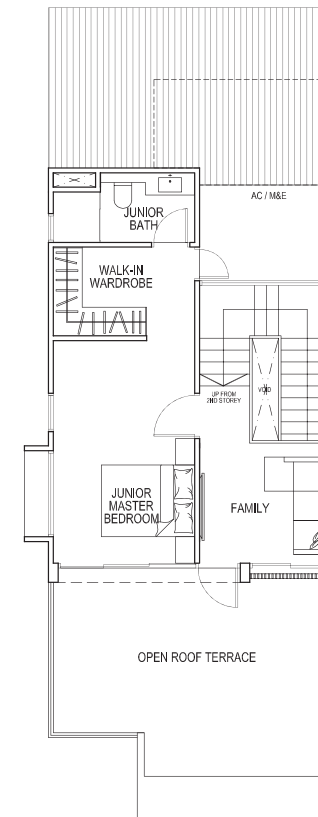
BASEMENT



1ST LEVEL



2ND LEVEL



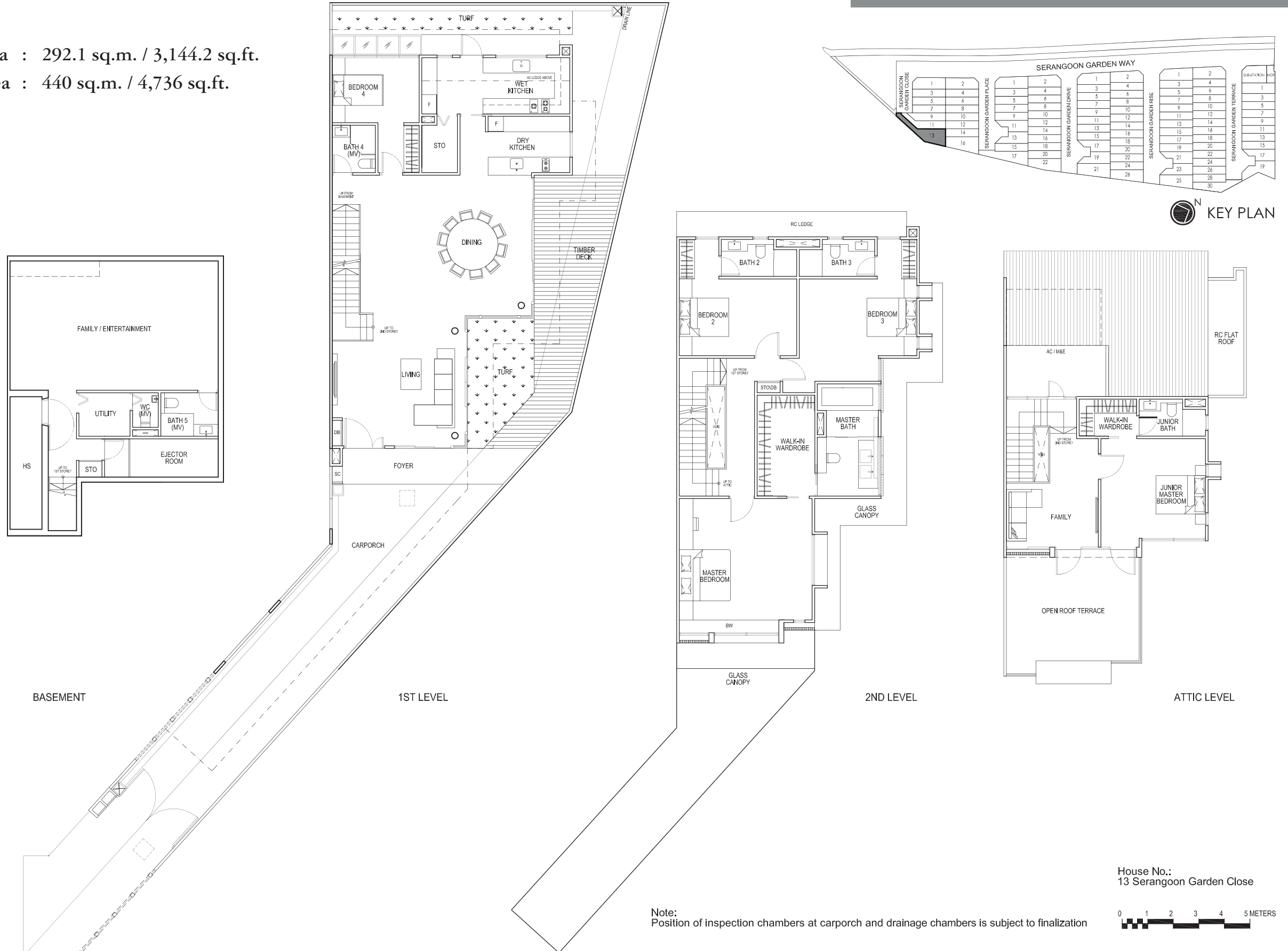
ATTIC LEVEL

Note : Position of inspection chambers at carporch and drainage chambers is subject to finalization

House No.:
1 Serangoon Garden Close



Land Area : 292.1 sq.m. / 3,144.2 sq.ft.
 Floor Area : 440 sq.m. / 4,736 sq.ft.



Note: Position of inspection chambers at carporch and drainage chambers is subject to finalization

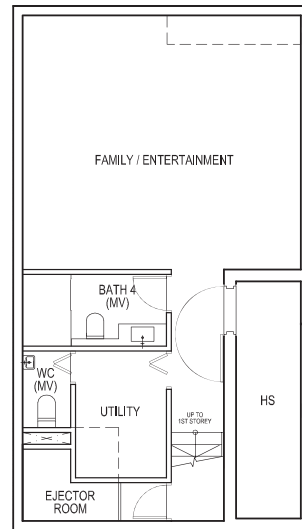
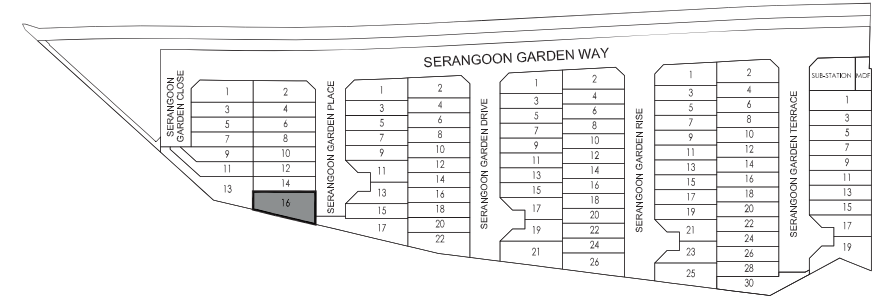
House No.:
13 Serangoon Garden Close



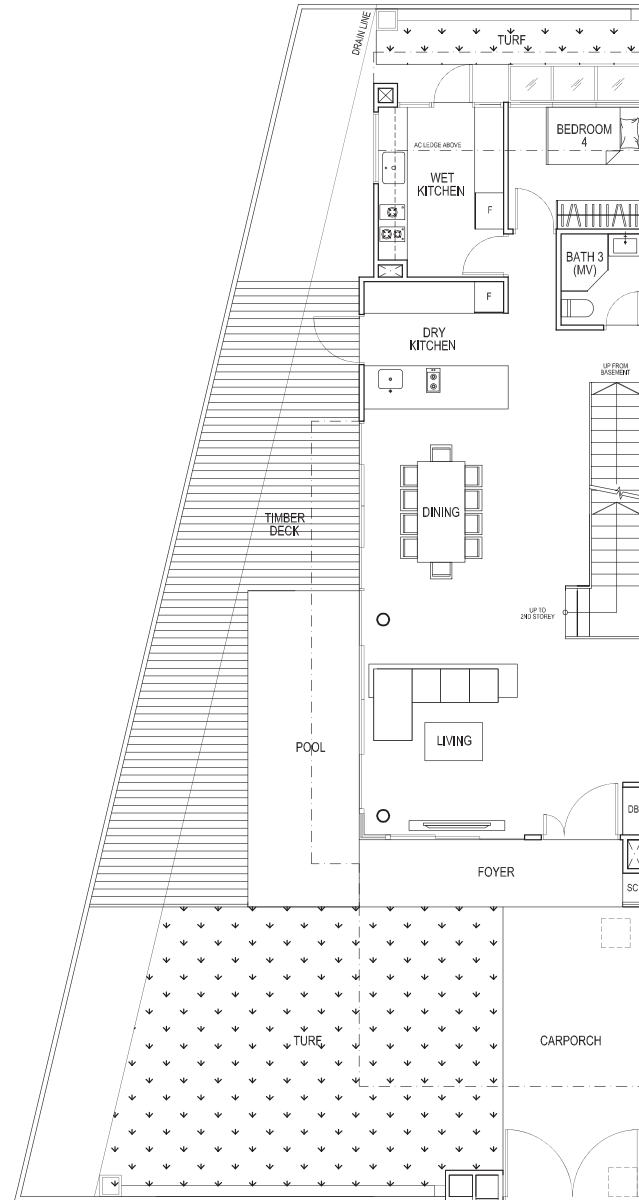
Corner Terrace Type C11

Land Area : 255.9 sq.m. / 2,754.5 sq.ft.

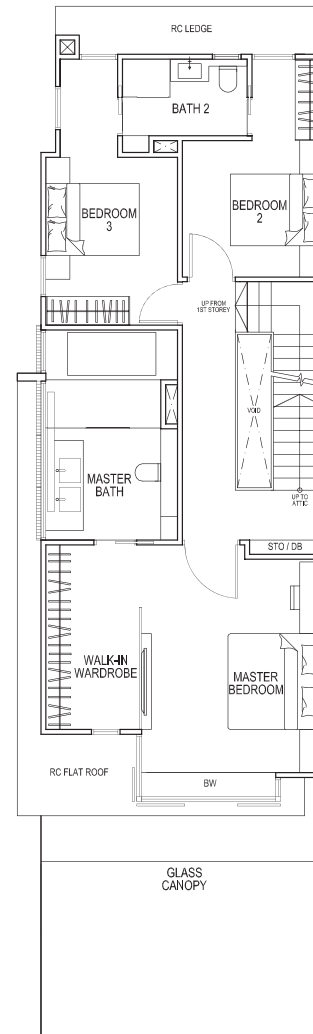
Floor Area : 340 sq.m. / 3,660 sq.ft.



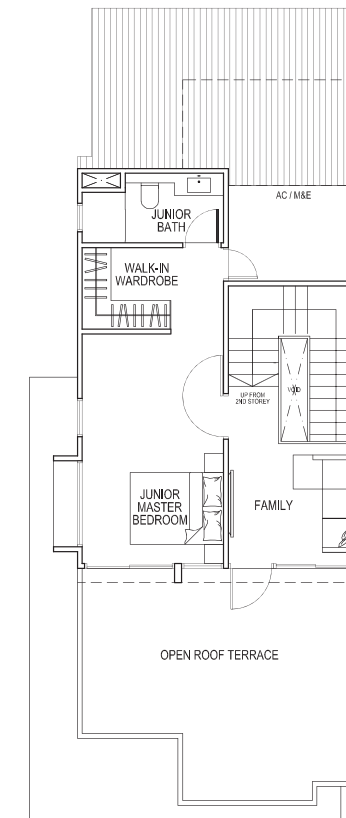
BASEMENT



1ST LEVEL



2ND LEVEL



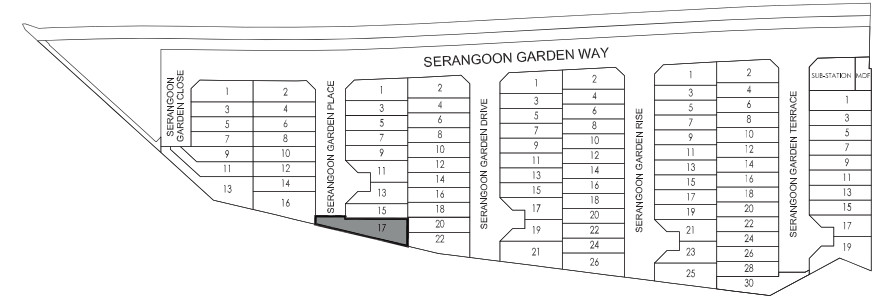
ATTIC LEVEL

Note:
Position of inspection chambers at carporch and drainage chambers is subject to finalization

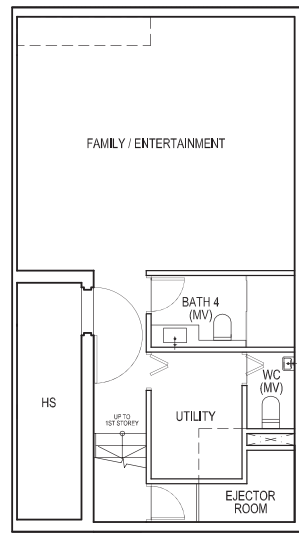
House No.:
16 Serangoon Garden Place



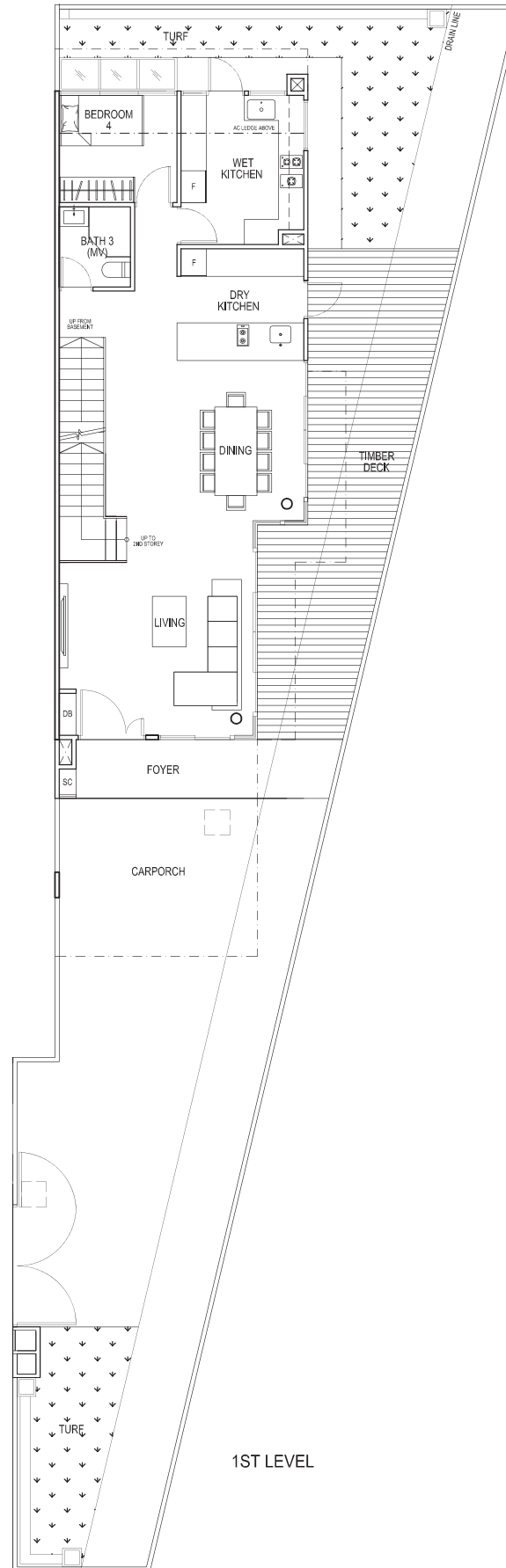
Land Area : 259.8 sq.m. / 2,796.5 sq.ft.
 Floor Area : 335 sq.m. / 3,606 sq.ft.



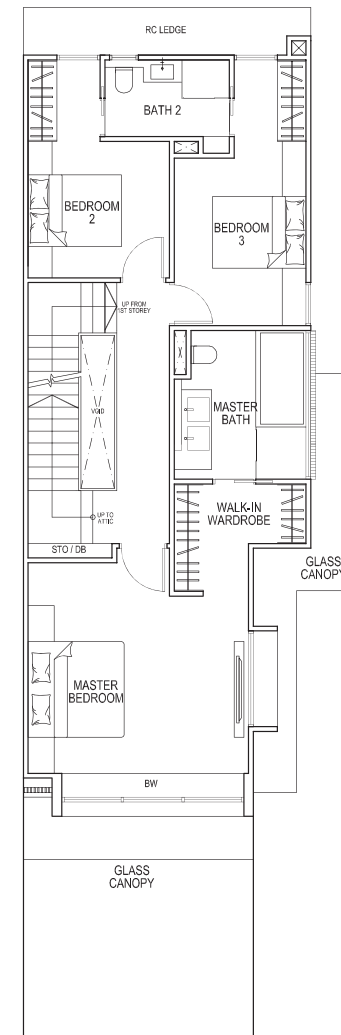
KEY PLAN



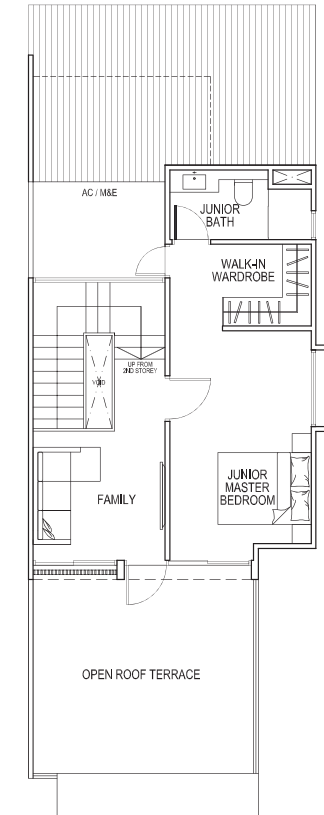
BASEMENT



1ST LEVEL



2ND LEVEL



ATTIC LEVEL

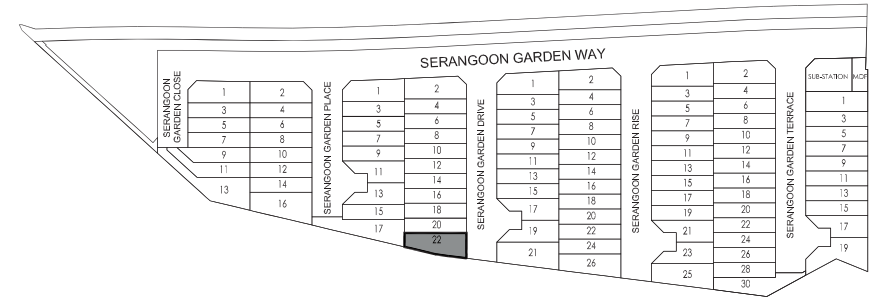
Note: Position of inspection chambers at carporch and drainage chambers is subject to finalization



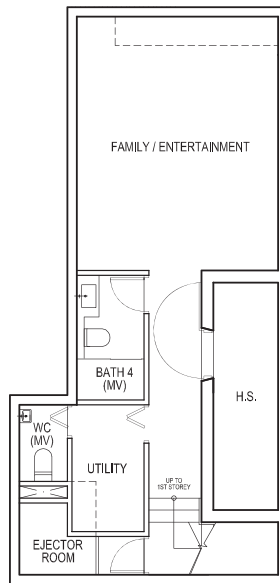
Corner Terrace Type C13

Land Area : 206.1 sq.m. / 2,218.5 sq.ft.

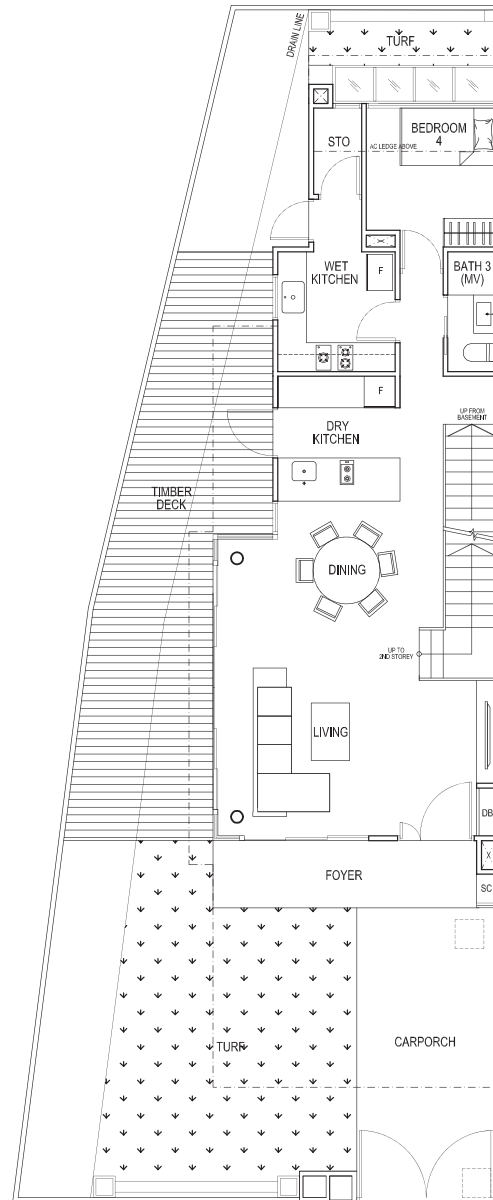
Floor Area : 306 sq.m. / 3,294 sq.ft.



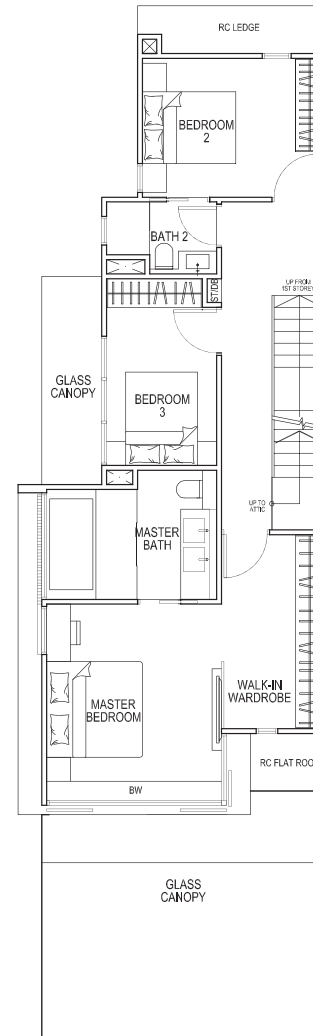
KEY PLAN



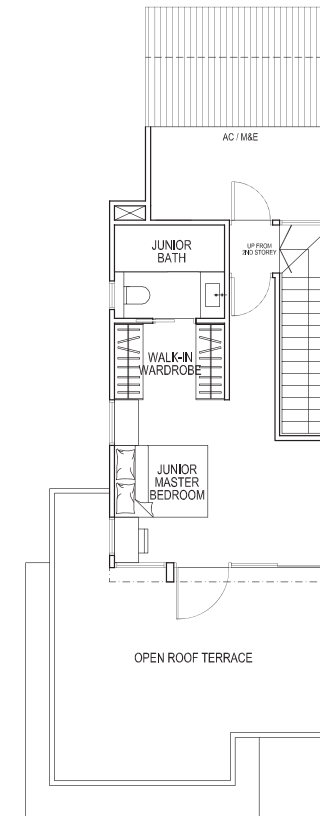
BASEMENT



1ST LEVEL



2ND LEVEL



ATTIC LEVEL

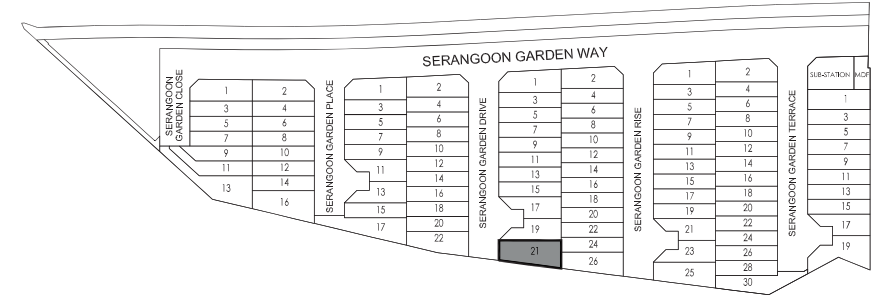
Note :
Position of inspection chambers at carporch and drainage chambers is subject to finalization

House No.:
22 Serangoon Garden Drive

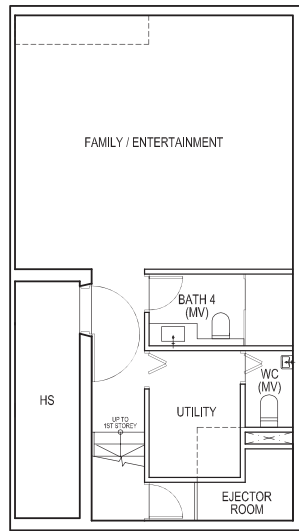


Land Area : 242.0 sq.m. / 2,604.9 sq.ft.

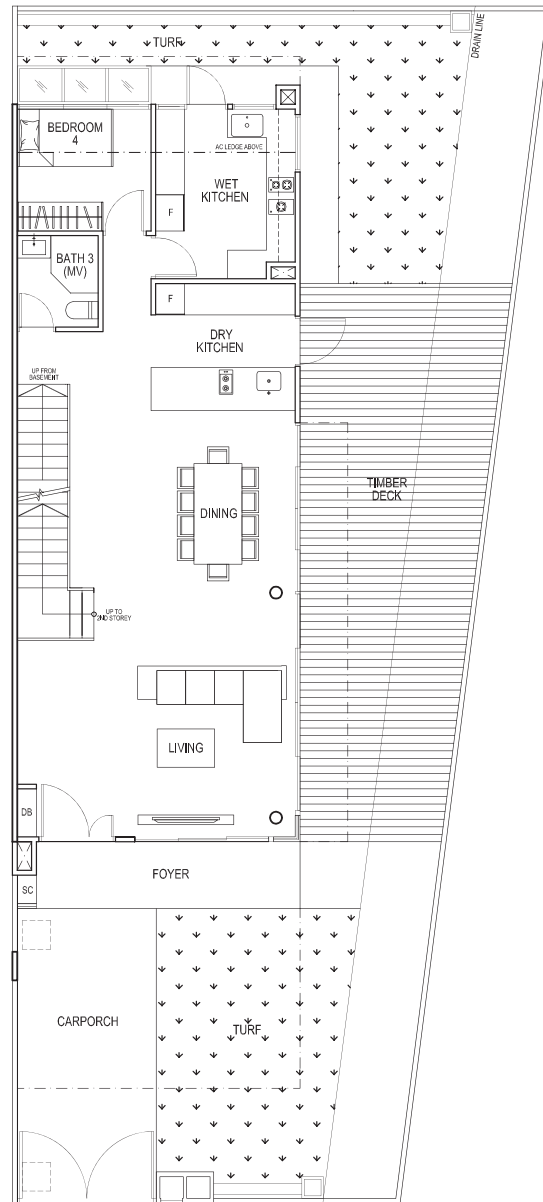
Floor Area : 344 sq.m. / 3,703 sq.ft.



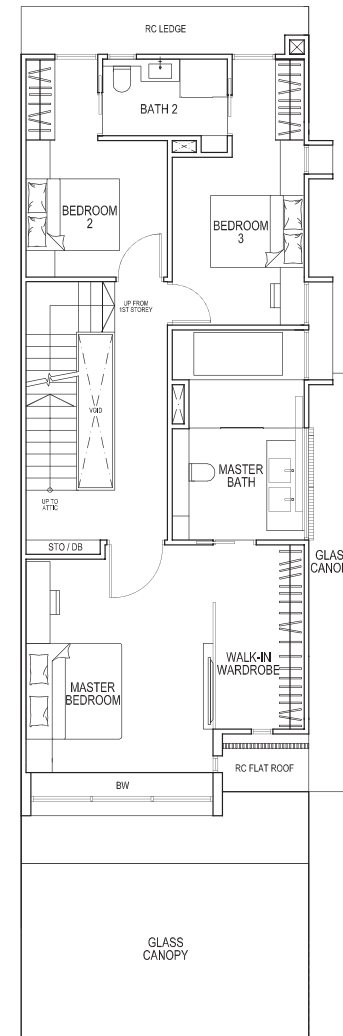
KEY PLAN



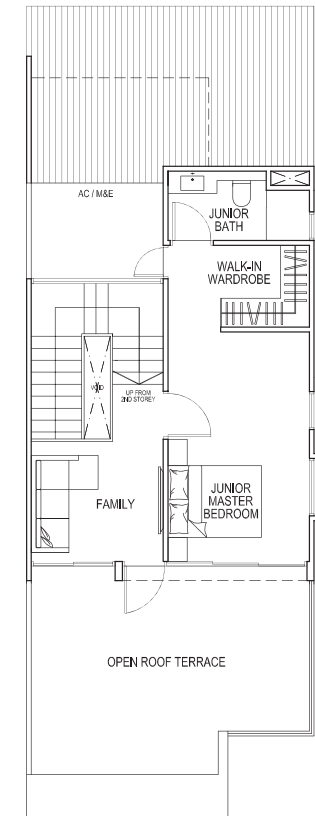
BASEMENT



1ST LEVEL



2ND LEVEL



ATTIC LEVEL

Note :
Position of inspection chambers at carporch and drainage chambers is subject to finalization

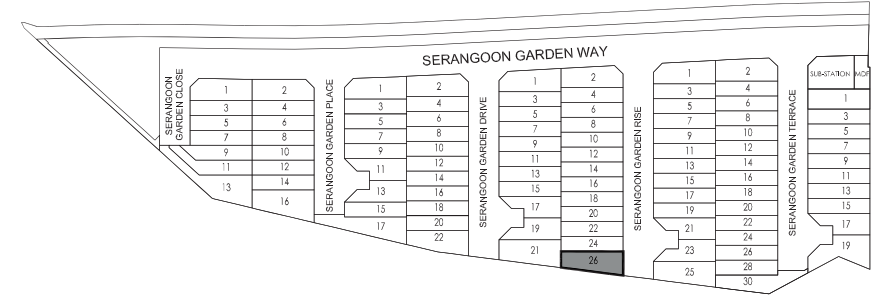
House No.:
21 Serangoon Garden Drive



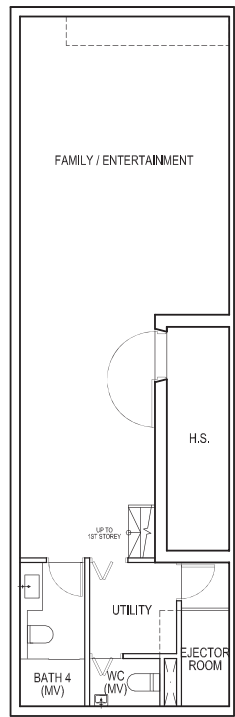
Corner Terrace Type C15

Land Area : 202.7 sq.m. / 2,181.9 sq.ft.

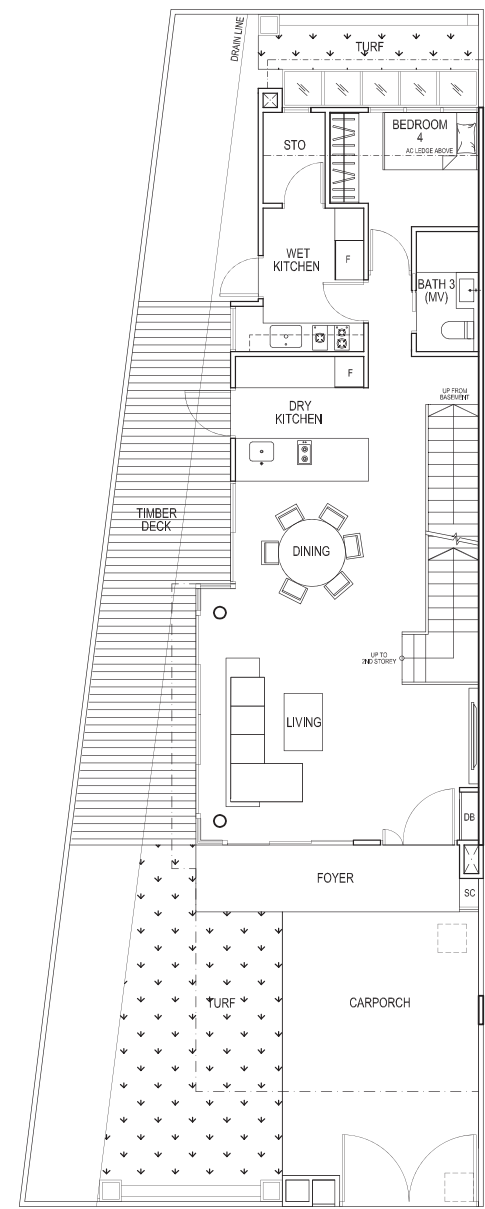
Floor Area : 330 sq.m. / 3,552 sq.ft.



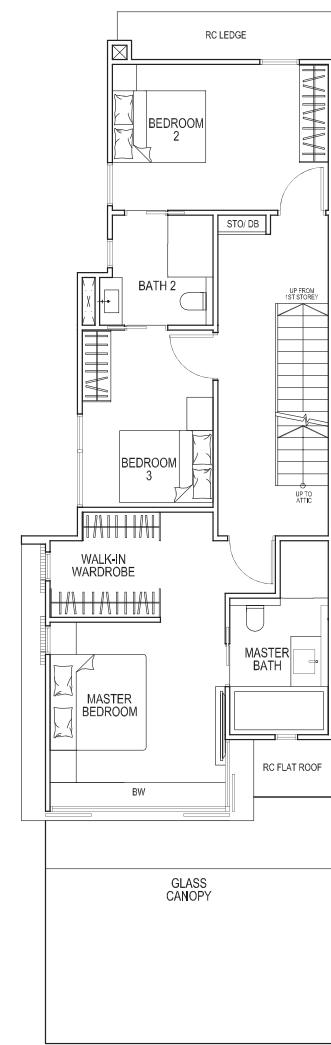
KEY PLAN



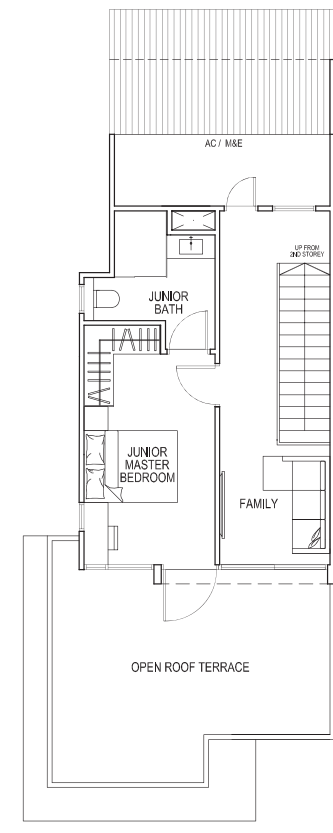
BASEMENT



1ST LEVEL



2ND LEVEL



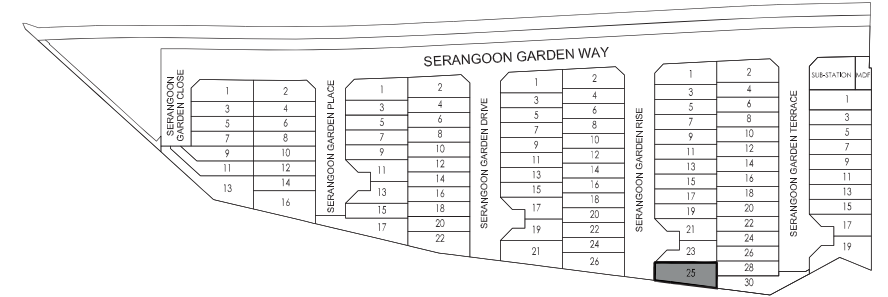
ATTIC LEVEL

Note: Position of inspection chambers at carporch and drainage chambers is subject to finalization

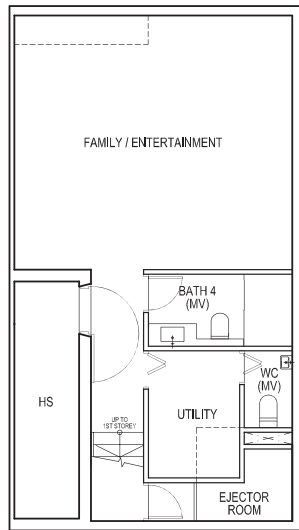


Land Area : 221.2 sq.m. / 2,381.0 sq.ft.

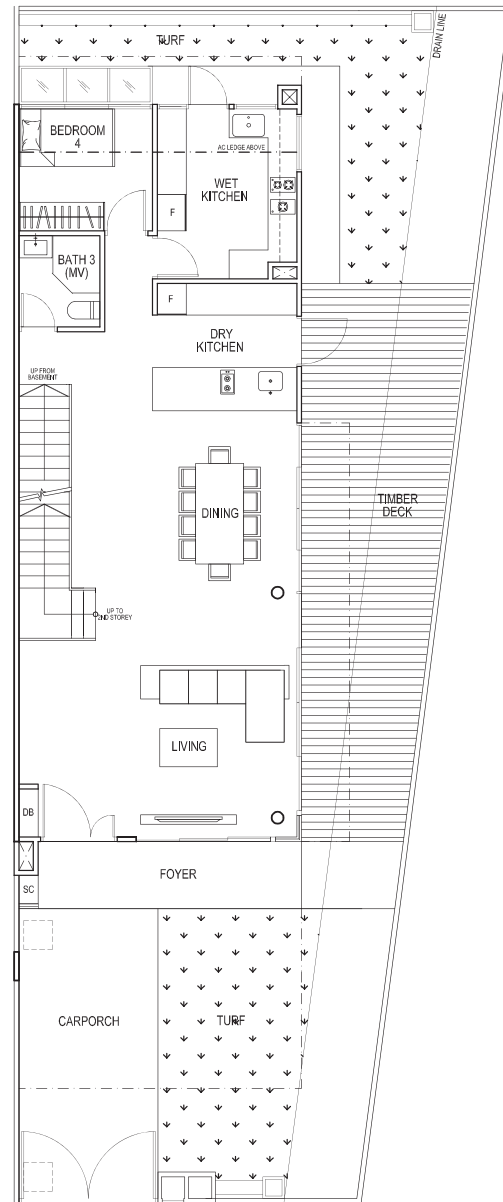
Floor Area : 344 sq.m. / 3,703 sq.ft.



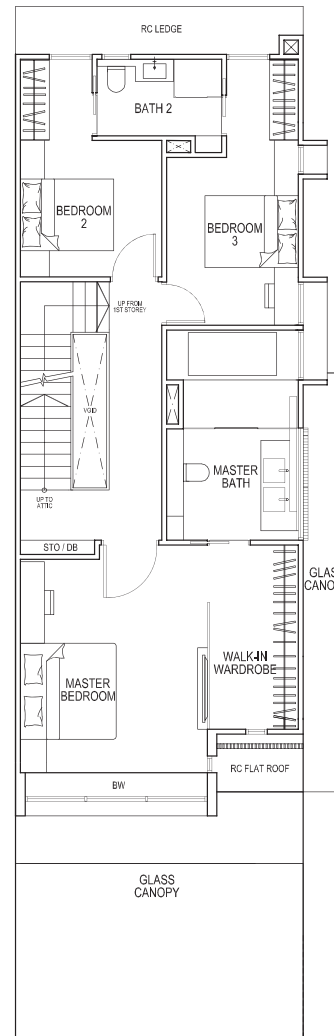
KEY PLAN



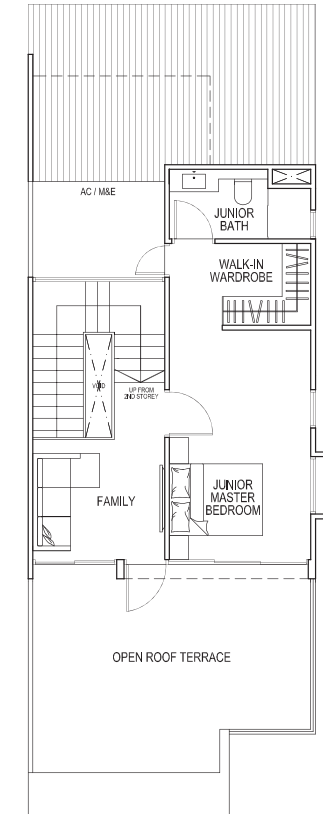
BASEMENT



1ST LEVEL



2ND LEVEL



ATTIC LEVEL

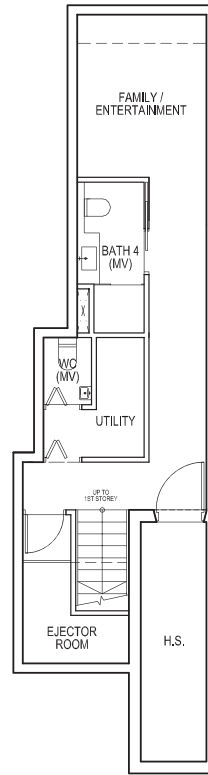
Note :
Position of inspection chambers at carporch and drainage chambers is subject to finalization

House No.:
25 Serangoon Garden Rise

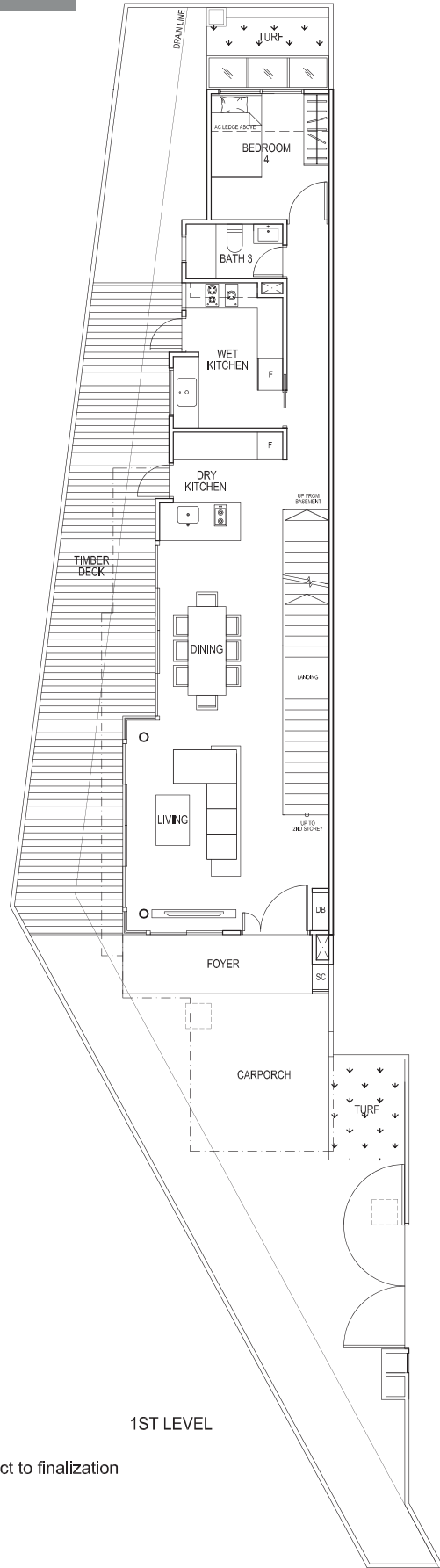


Corner Terrace Type C17

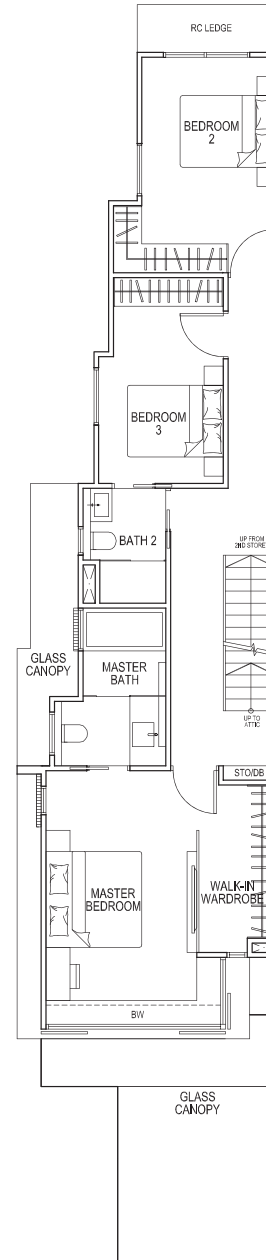
Land Area : 212.2 sq.m. / 2,284.1 sq.ft.
 Floor Area : 313 sq.m. / 3,369 sq.ft.



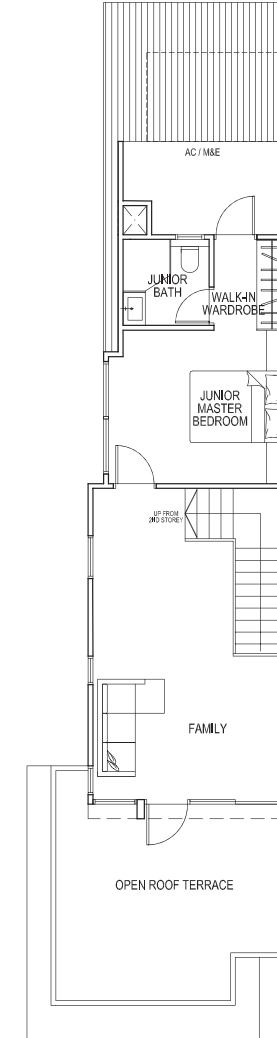
BASEMENT



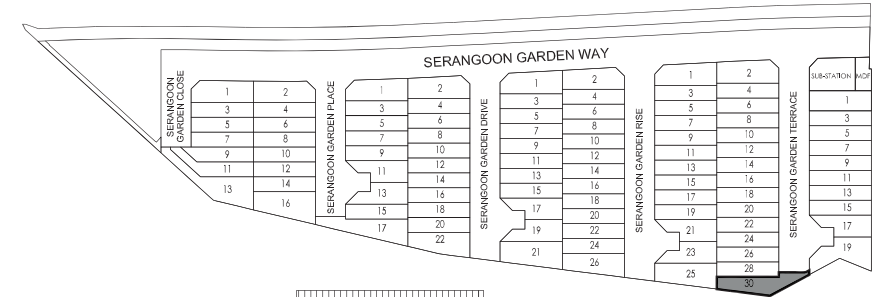
1ST LEVEL



2ND LEVEL

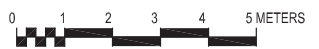


ATTIC LEVEL



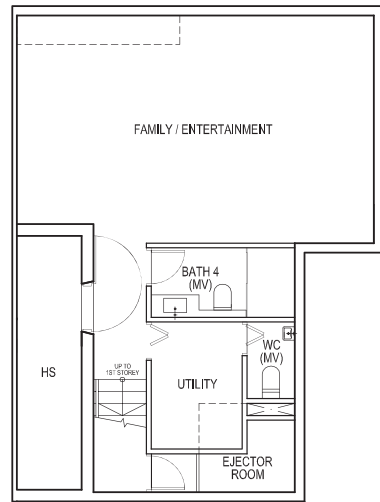
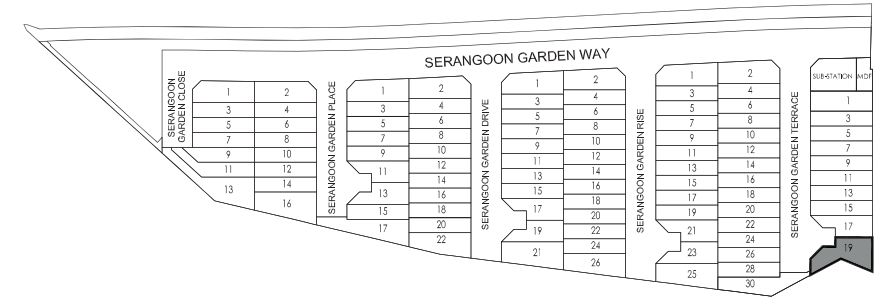
Note: Position of inspection chambers at carporch and drainage chambers is subject to finalization

House No.: 30 Serangoon Garden Terrace

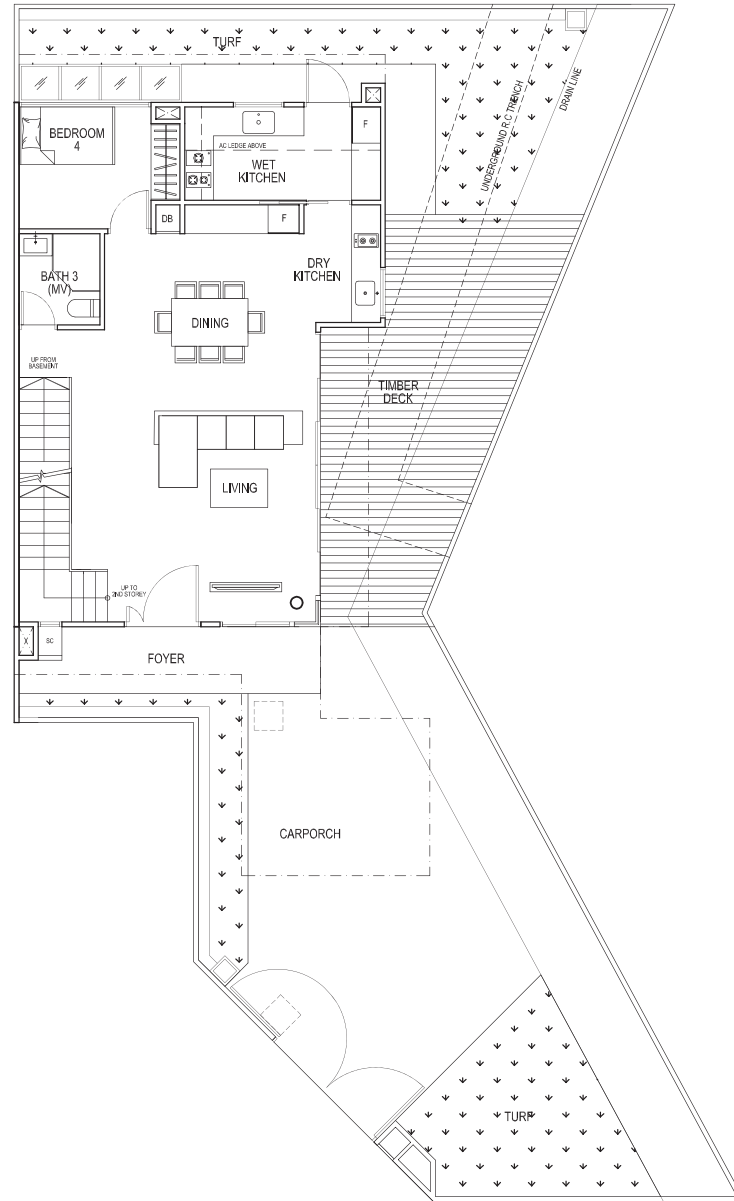


Land Area : 239.2 sq.m. / 2,574.7 sq.ft.

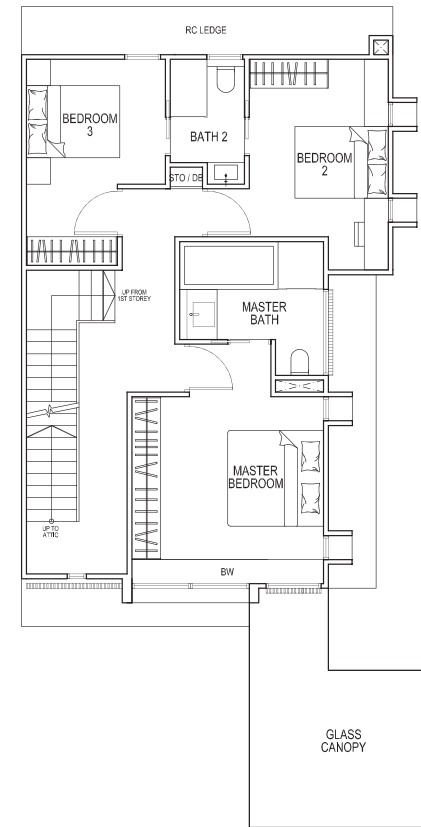
Floor Area : 309 sq.m. / 3,326 sq.ft.



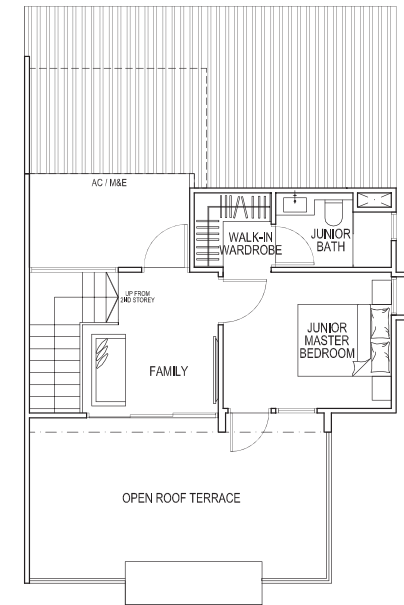
BASEMENT



1ST LEVEL



2ND LEVEL



ATTIC LEVEL

Note :
Position of inspection chambers at carporch and drainage chambers is subject to finalization

House No.:
19 Serangoon Garden Terrace

