

Builder of Distinction
Setia
S P SETIA BHD GROUP



MALAYSIA | VIETNAM | AUSTRALIA | SINGAPORE | CHINA | INDONESIA | UNITED KINGDOM

S P Setia International (S) Pte Ltd
1 Harbourfront Place #01-06,
Harbourfront Tower One, Singapore 098633.

livelearnworkplay
www.spsetia.com.my

+65 6271 2255
Email: sg-sales@spsetia.com.sg



• Developer – S P Setia International (S) Pte Ltd (UEN 200906303E) • Developer License No. – CD983 • Tenure of Land – 99 Year wef 25 April 2012 • Location – Lot 2595V, MK 16, at Chestnut Avenue
• Expected Date of TOP – 31 December 2016 • Expected Date of Legal Completion – 31 December 2019 • Building Plan Approval No. A0781-00005-2012-BP01 dated 08 November 2012
All information, plans and specifications are current at the time of print and are subject to changes as may be required or approved by the developer or the relevant authorities. The Sale and Purchase Agreement shall form the entire agreement between the developer and the purchaser and shall in no way be modified by any statements or representations (whether contained in this brochure or otherwise).



SKY CLUBS



LEGEND

- 1 Gourmet Gallery
- 2 The Belvedere
- 3 Sky Living
- 4 Spa Oasis
- 5 Hammock Garden
- 6 Sky Garden
- 7 Daybeds Corner
- 8 Sky Walk
- 9 Cocktail Corner
- 10 Sky Gym

SITE PLAN



LEGEND

- | | | |
|--------------------------|---------------------|-------------------------|
| 1 Grand Piazza | 17 Bio Pond | 29 Boardwalk |
| 2 Guard Post | 18 Lawn Bowl | 30 Meditation Deck |
| 3 Cascading Planter Wall | 19 Butterfly Gate | 31 Dragonfly Path |
| 4 Leisure Pool | 20 Sunbird Walk | 32 Children's Play Area |
| 5 Sunning Deck | 21 Island Club | 33 Feature Sculpture |
| 6 Chrysalis Pavilion | -Entertainment Room | 34 Checkmate |
| 7 Splash Pool | -Function Room | 35 Tennis Court |
| 8 Jet Pool | -Steam Room | 36 Multi-purpose Court |
| 9 Bubbling Waters | -Reading Corner | 37 Side Gate |
| 10 Water Gateway | 22 Gym | |
| 11 Bird Swing Pavilion | 23 Lap Pool | |
| 12 Fitness Stations | 24 Chrysalis Dining | |
| 13 BBQ Pavilion | 25 Tranquil Waters | |
| 14 Lotus Creek | 26 Picnic Lawn | |
| 15 Butterfly Trail | 27 Cascading Garden | |
| 16 Bird Song Pavilion | 28 Alfresco Deck | |

TYPE B1p 2 - BEDROOM

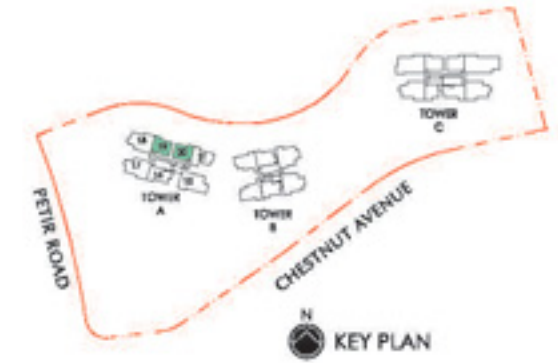
85 sq.m. (915 sq.ft.)



Applicable to units:
#01-19
#01-20 (mirror)

TYPE B1 2 - BEDROOM

62 sq.m. (667 sq.ft.)

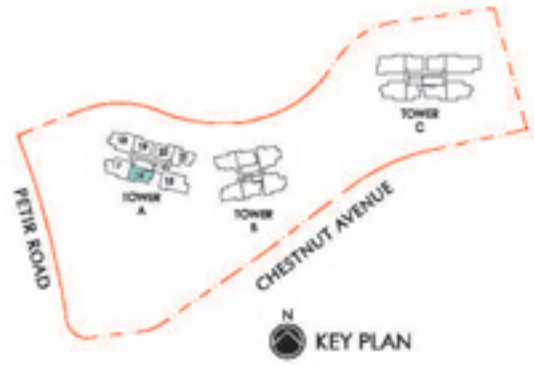


Applicable to units:
#02-19, #04-19, #05-19, #08-19, #10-19, #12-19,
#15-19, #17-19, #19-19, #21-19, #23-19
Applicable to units (mirror):
#02-20, #04-20, #05-20, #08-20, #10-20, #12-20,
#15-20, #17-20, #19-20, #21-20, #23-20



Applicable to units:
#03-19, #05-19, #07-19, #09-19, #11-19, #13-19,
#16-19, #18-19, #20-19, #22-19, #24-19
Applicable to units (mirror):
#03-20, #05-20, #07-20, #09-20, #11-20, #13-20,
#16-20, #18-20, #20-20, #22-20, #24-20

TYPE BS1p
2 - BEDROOM + STUDY
 95 sq.m. (1023 sq.ft.)



Applicable to unit:
 #01-16

TYPE BS1
2 - BEDROOM + STUDY
 68 sq.m. (732 sq.ft.)



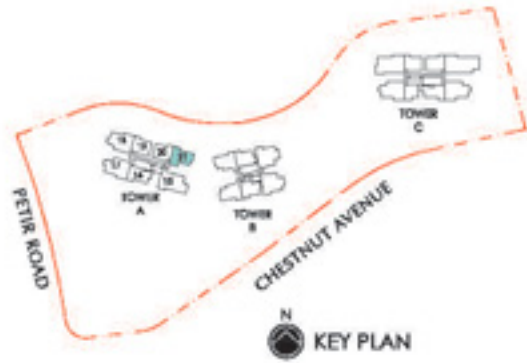
Applicable to units:
 #03-16, #05-16, #07-16, #09-16, #11-16, #13-16,
 #16-16, #18-16, #20-16, #22-16, #24-16



Applicable to units:
 #02-16, #04-16, #06-16, #08-16, #10-16, #12-16,
 #15-16, #17-16, #19-16, #21-16, #23-16

TYPE BS2p 2 - BEDROOM + STUDY

97 sq.m. (1044 sq.ft.)

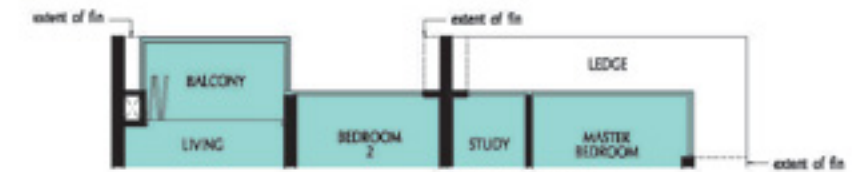
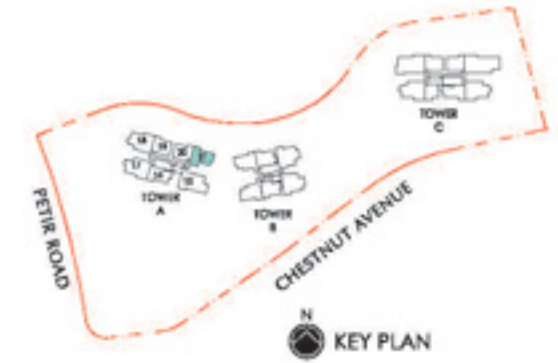


Applicable to unit:
#01-21

The plan is not to scale and subject to change as may be approved by the relevant authorities.
All floor areas are approximate and subject to final survey.

TYPE BS2 2 - BEDROOM + STUDY

70 sq.m. (753 sq.ft.)



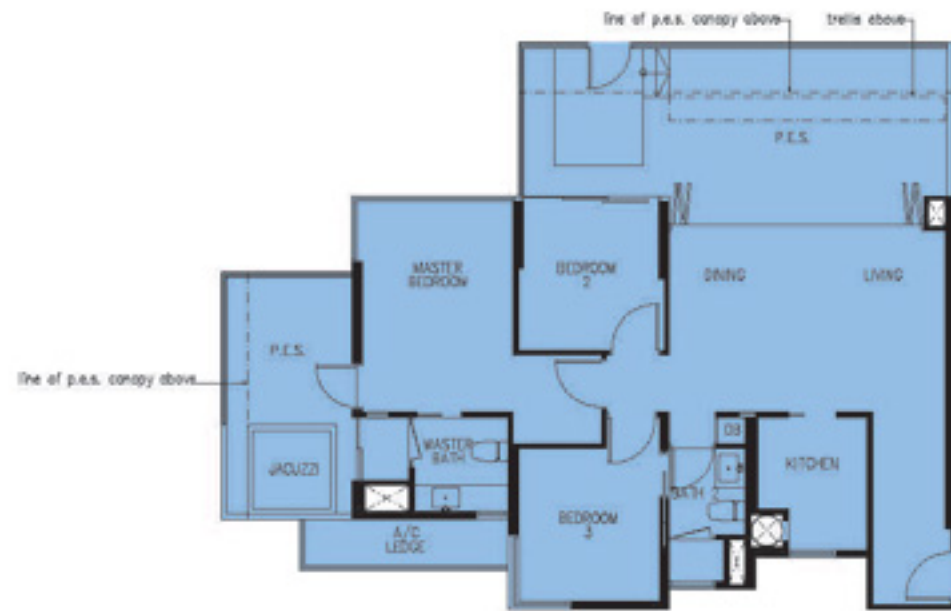
Applicable to units:
#02-21, #04-21, #06-21, #08-21, #10-21, #12-21,
#15-21, #17-21, #19-21, #21-21, #23-21



Applicable to units:
#03-21, #05-21, #07-21, #09-21, #11-21, #13-21,
#16-21, #18-21, #20-21, #22-21, #24-21

The plan is not to scale and subject to change as may be approved by the relevant authorities.
All floor areas are approximate and subject to final survey.

TYPE C2p
3 - BEDROOM
 120 sq.m. (1292 sq.ft.)



Applicable to unit:
 #01-18

The plan is not to scale and subject to change as may be approved by the relevant authorities.
 All floor areas are approximate and subject to final survey.

TYPE C2ap
3 - BEDROOM
 113 sq.m. (1216 sq.ft.)



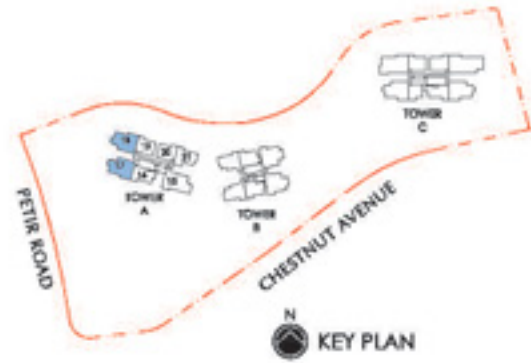
Applicable to unit:
 #01-17

The plan is not to scale and subject to change as may be approved by the relevant authorities.
 All floor areas are approximate and subject to final survey.

TYPE C2

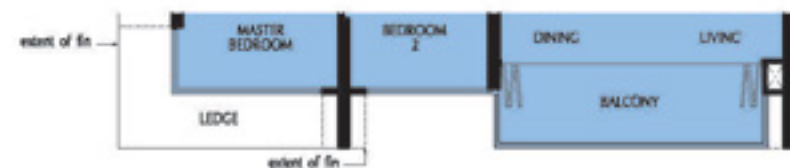
3 - BEDROOM

292 sq.m. (990 sq.ft.)



Applicable to units:
#03-17, #05-17, #07-17, #09-17, #11-17,
#13-17, #16-17, #18-17, #20-17, #22-17

Applicable to units (mirror):
#03-18, #05-18, #07-18, #09-18, #11-18,
#13-18, #16-18, #18-18, #20-18, #22-18



Applicable to units:
#02-17, #04-17, #06-17, #10-17, #12-17,
#15-17, #17-17, #19-17, #21-17, #23-17

Applicable to units (mirror):
#02-18, #04-18, #06-18, #10-18, #12-18,
#15-18, #17-18, #19-18, #21-18, #23-18

The plan is not to scale and subject to change as may be approved by the relevant authorities.
All floor areas are approximate and subject to final survey.

TYPE C2r

3 - BEDROOM

149 sq.m. (1604 sq.ft.)



The plan is not to scale and subject to change as may be approved by the relevant authorities.
All floor areas are approximate and subject to final survey.

TYPE CS2p
3 - BEDROOM + STUDY
 149 sq.m. (1604 sq.ft.)



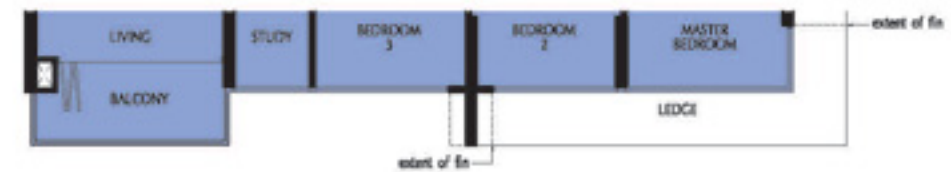
Applicable to unit:
 #01-15

The plan is not to scale and subject to change as may be approved by the relevant authorities.
 All floor areas are approximate and subject to final survey.

TYPE CS2
3 - BEDROOM + STUDY
 106 sq.m. (1141 sq.ft.)



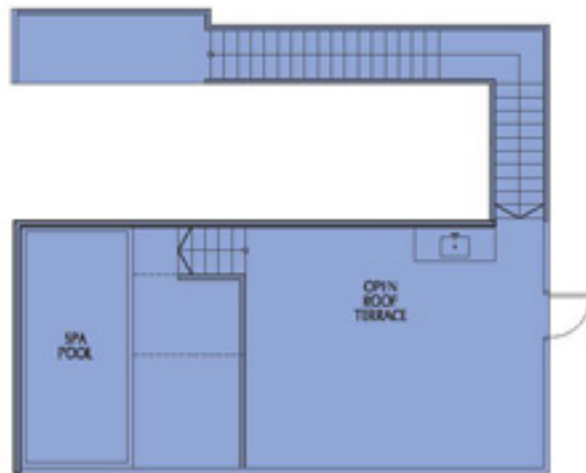
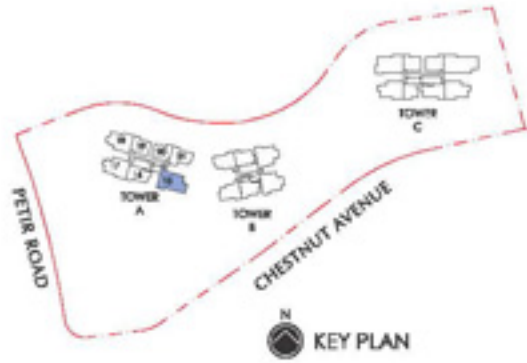
Applicable to units:
 #03-15, #05-15, #07-15, #09-15, #11-15,
 #13-15, #16-15, #18-15, #20-15, #22-15



Applicable to units:
 #02-15, #04-15, #06-15, #08-15, #10-15, #12-15,
 #15-15, #17-15, #19-15, #21-15, #23-15

The plan is not to scale and subject to change as may be approved by the relevant authorities.
 All floor areas are approximate and subject to final survey.

TYPE CS2r
3 - BEDROOM + STUDY
 164 sq.m. (1765 sq.ft.)



Applicable to unit:
 #24-15

The plan is not to scale and subject to change as may be approved by the relevant authorities.
 All floor areas are approximate and subject to final survey.