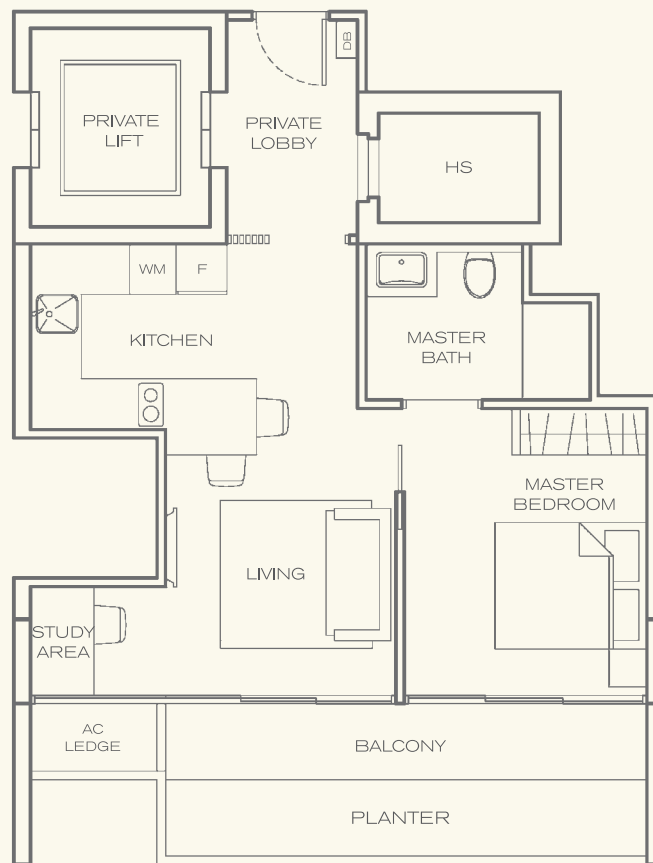
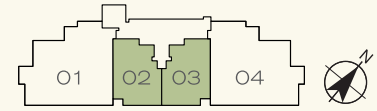


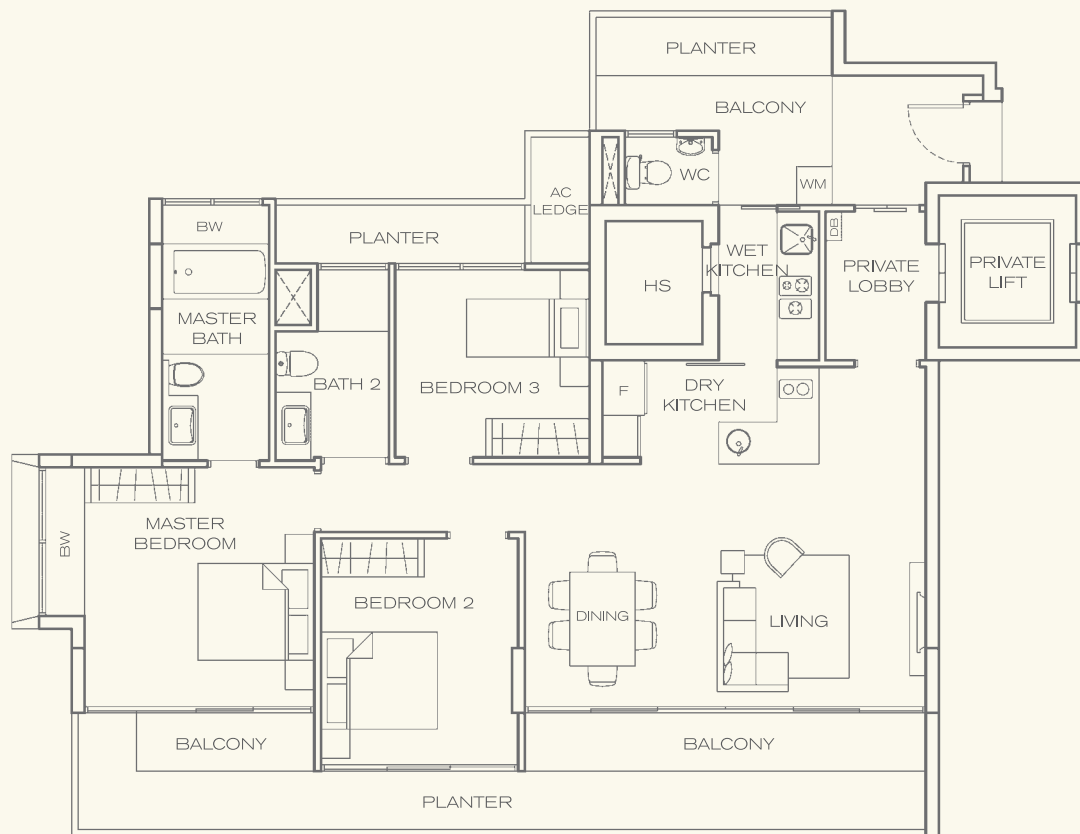
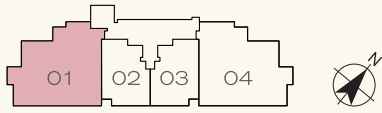
Type 1A

Unit #02-02 to #10-02
#02-03 to #10-03 (mirror)
Area 614sqft / 57sqm



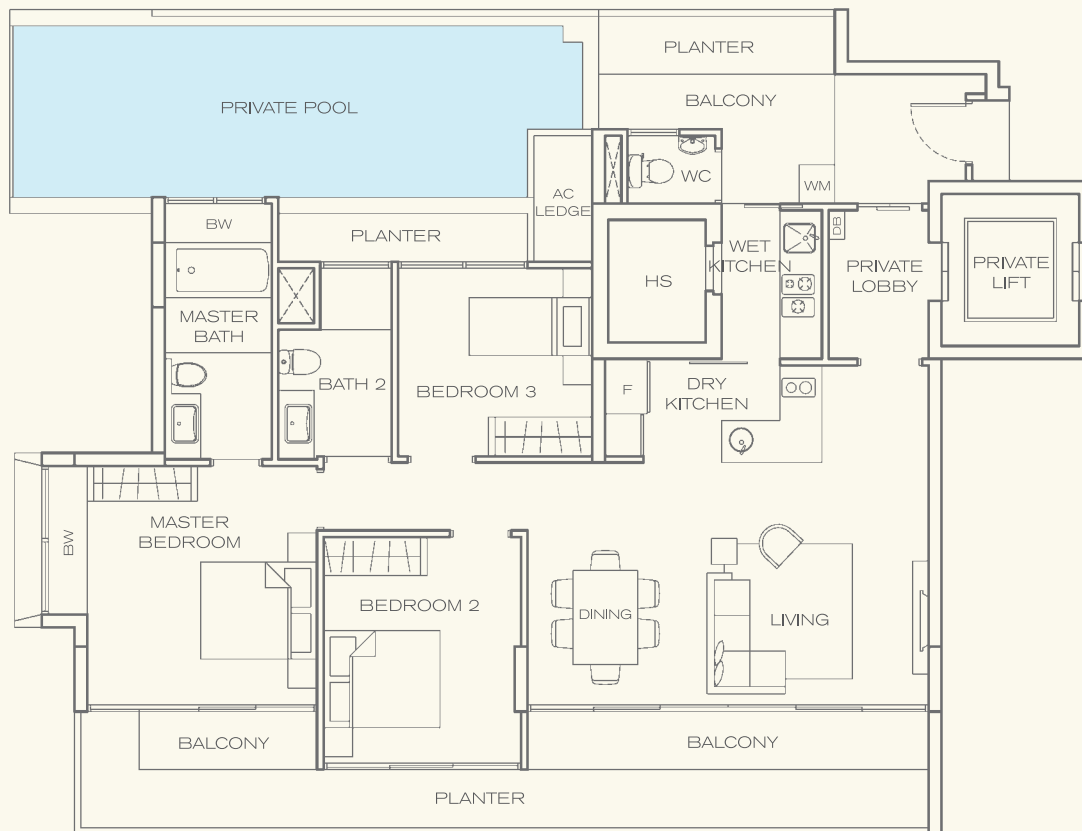
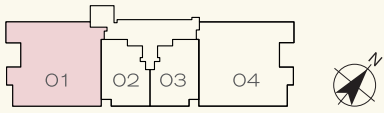
Type 3A

Unit #03-01 to #10-01
Area 1,528sqft / 142sqm



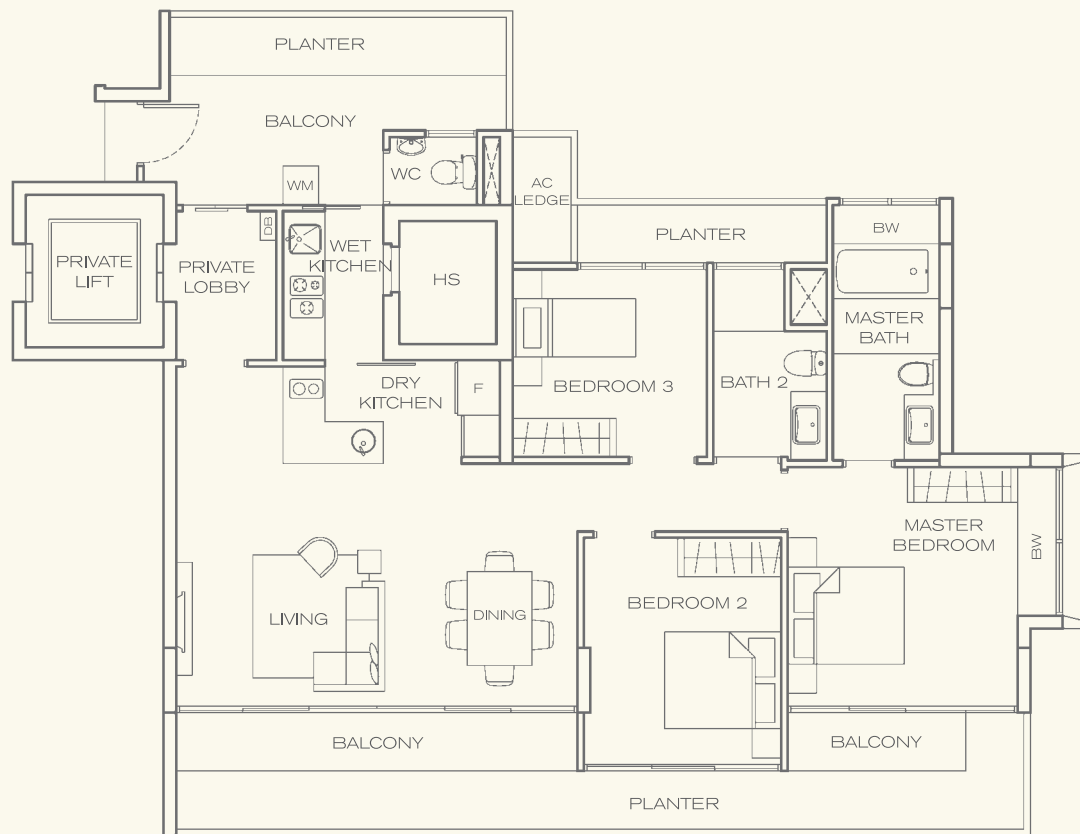
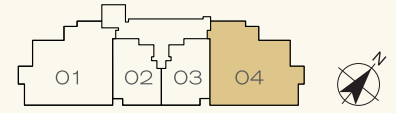
Type 3A1

Unit #02-01
Area 1,808sqft / 168sqm



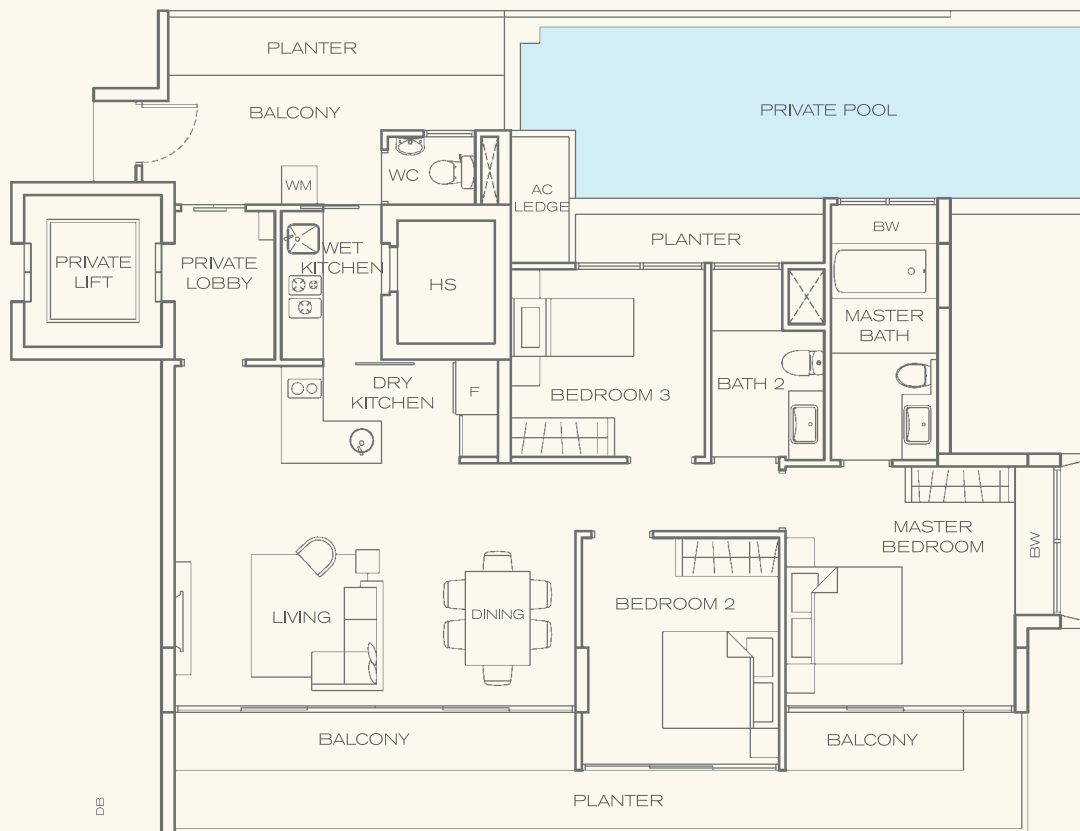
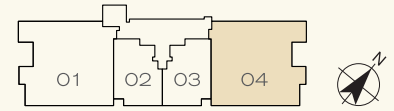
Type 3B

Unit #03-04 to #10-04
Area 1,539sqft / 143sqm



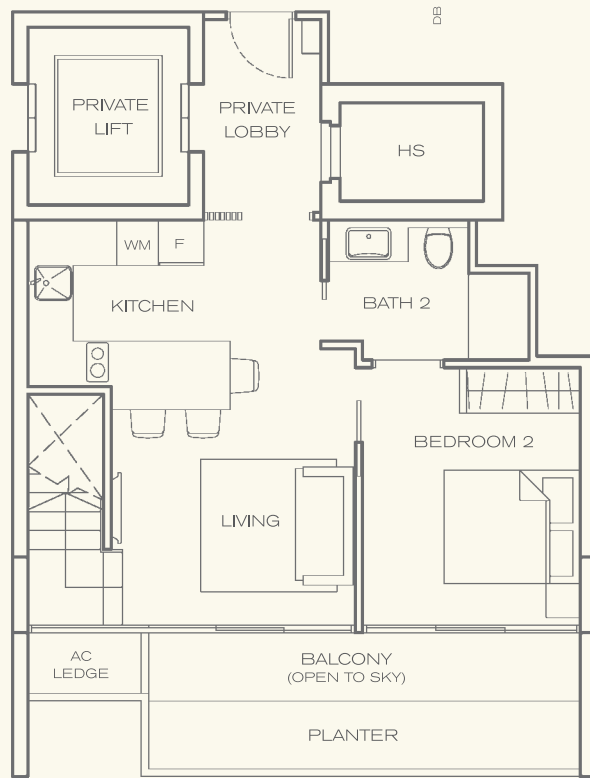
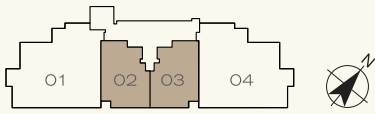
Type 3B1

Unit #02-04
Area 1,819sqft / 169sqm

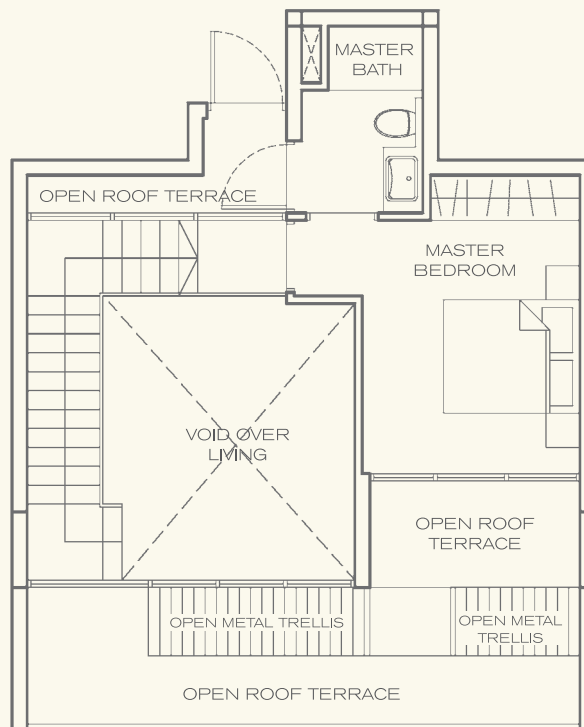


Type 2A(PH)

Unit #11-02
#11-03 (mirror)
Area 1,249sqft / 116sqm



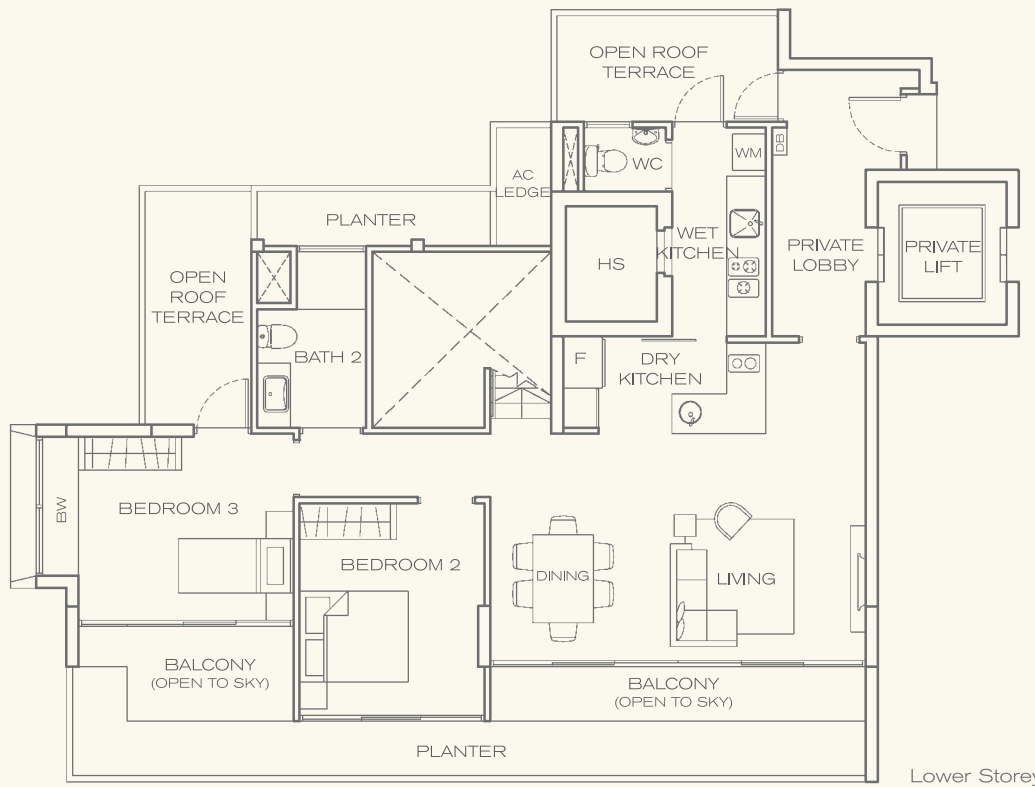
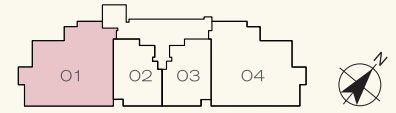
Lower Storey



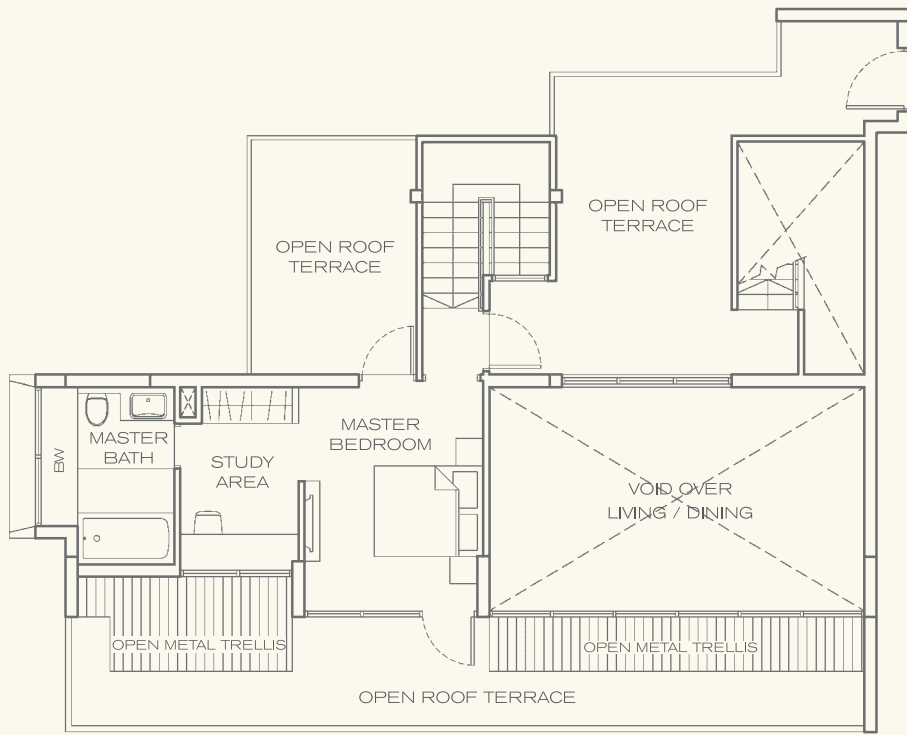
Upper Storey

Type 3A(PH)

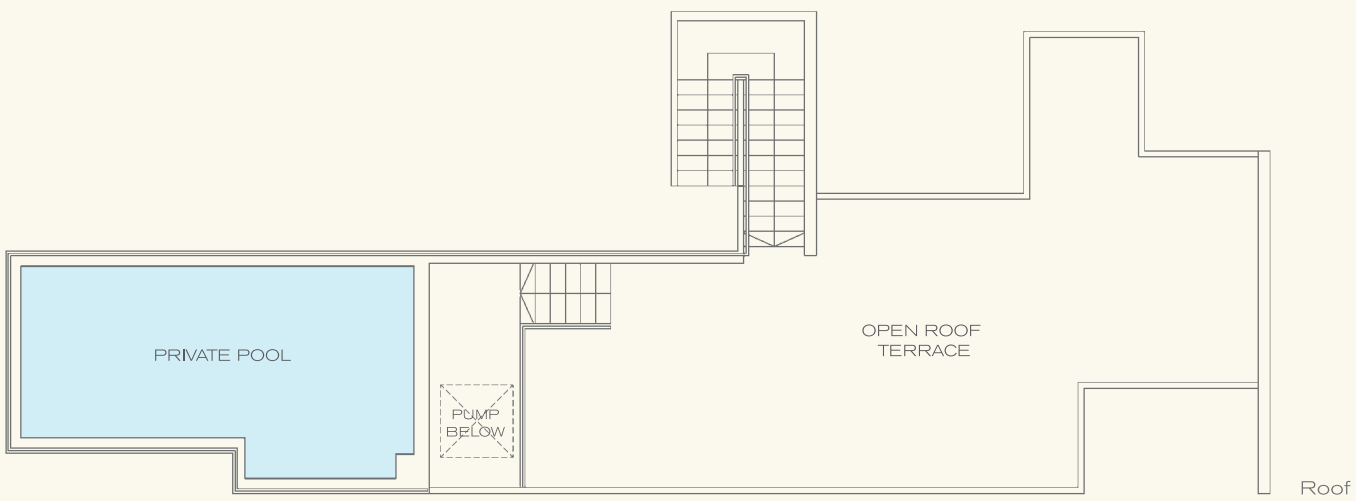
Unit #11-01
 Area 3,757sqft / 349sqm



Lower Storey



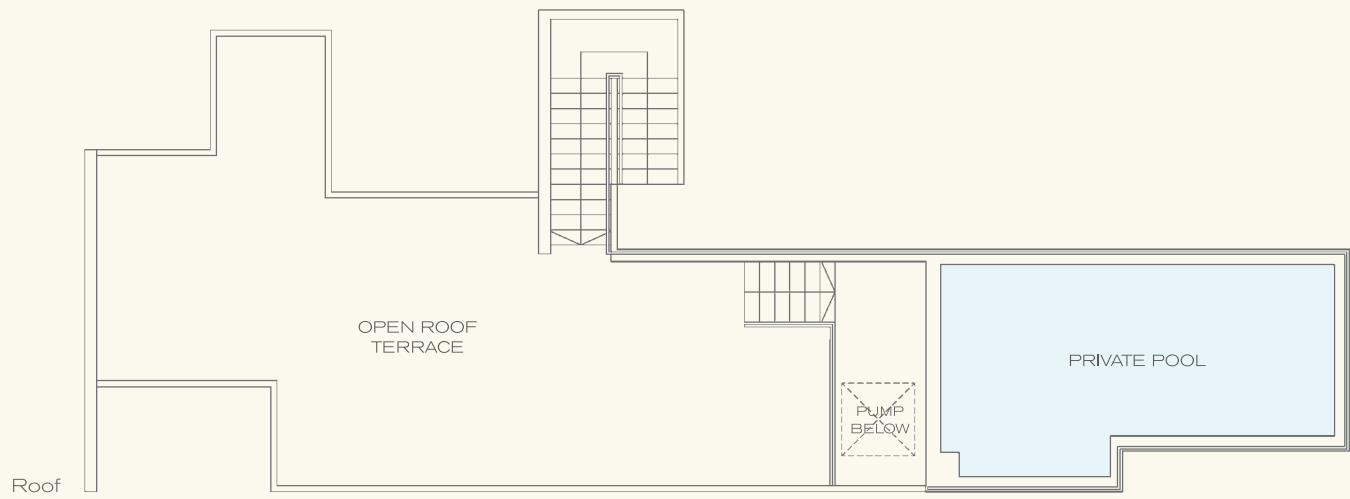
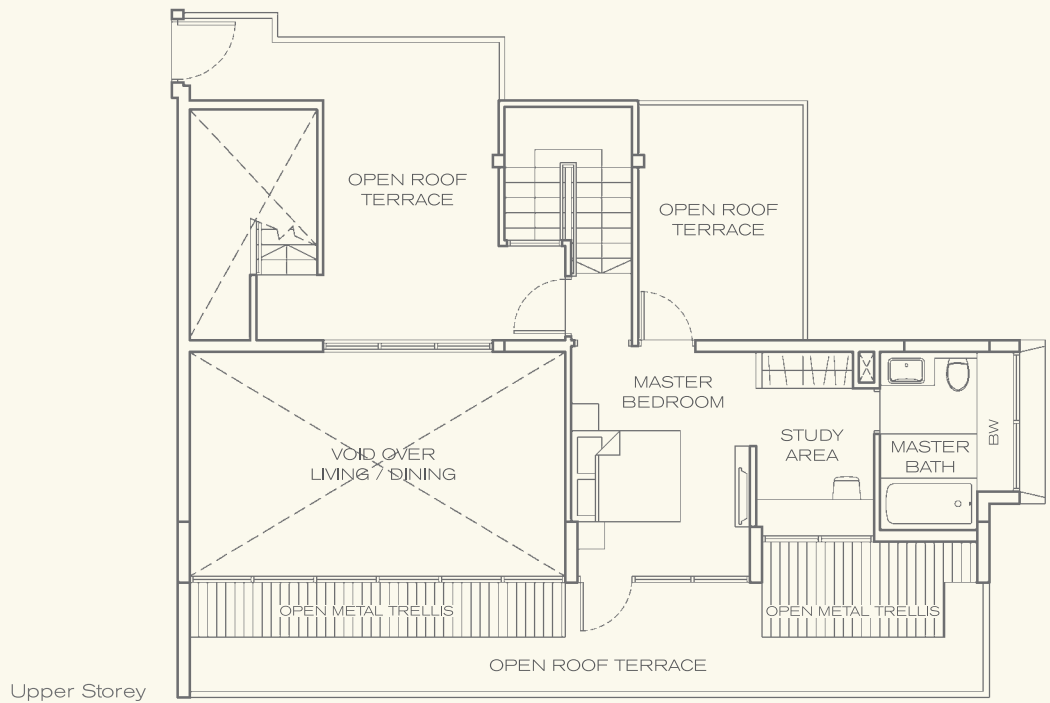
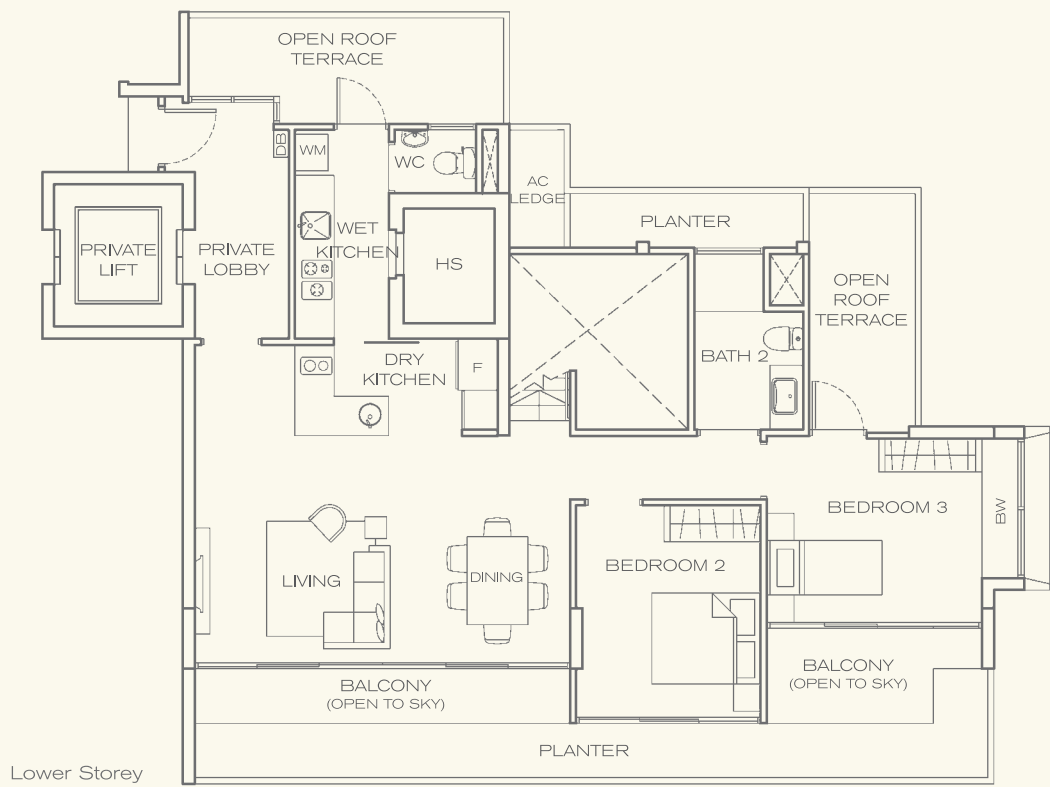
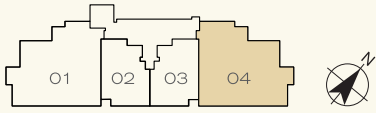
Upper Storey



Roof

Type 3B(PH)

Unit #11-04
 Area 3,746sqft / 348sqm



The plans are subject to change as may be required or approved by the relevant authorities. These are not drawn to scale and are for the purpose of visual presentation of the different layouts that are available. Areas are estimates only and are subject to final survey.