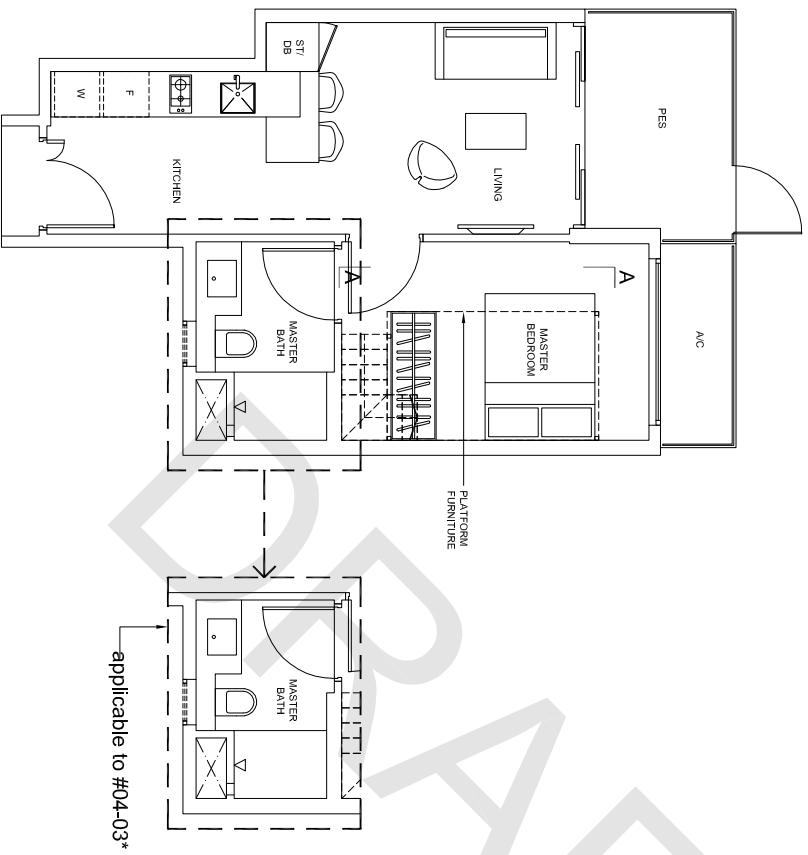


1-Bedroom

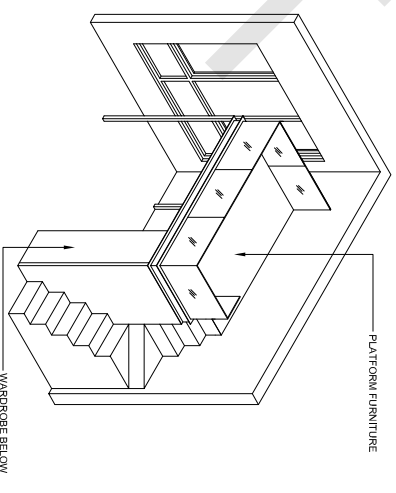
TYPE A-1G

Area: 46 sq m (include 3 sq m A/C LEDGE; 6 sq m PES)

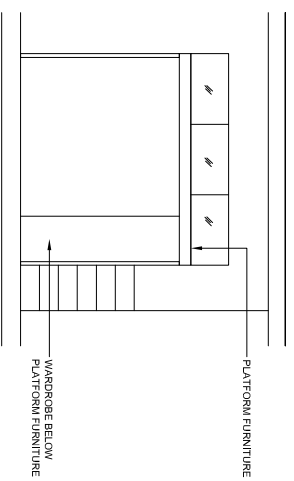
Unit(s): #04-03*, #04-04, #04-09*, #04-14



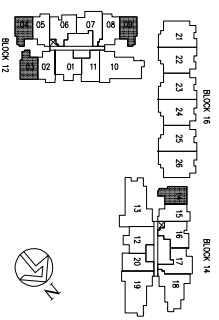
applicable to #04-03*



ISOMETRIC VIEW +



SECTION A-A

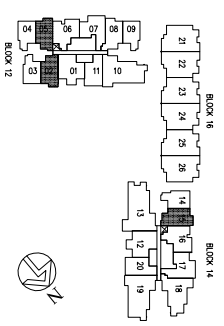
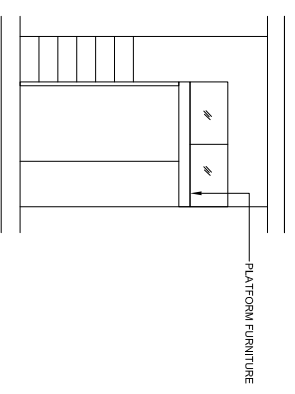
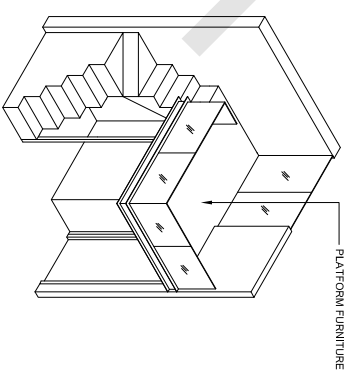
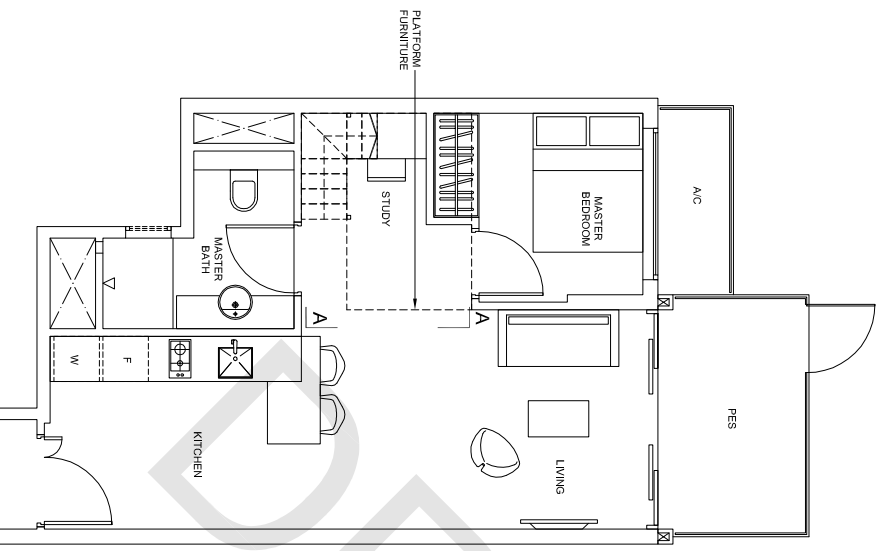


NOTE:
 * units in mirror image
 + isometric views have excluded railings drawings

Plans are subject to change as may be required or approved by the relevant authorities. These are not drawn to scale and are for the purpose of visual presentation only. Indicated areas are estimates only and subject to final survey.

1-Bedroom + Study

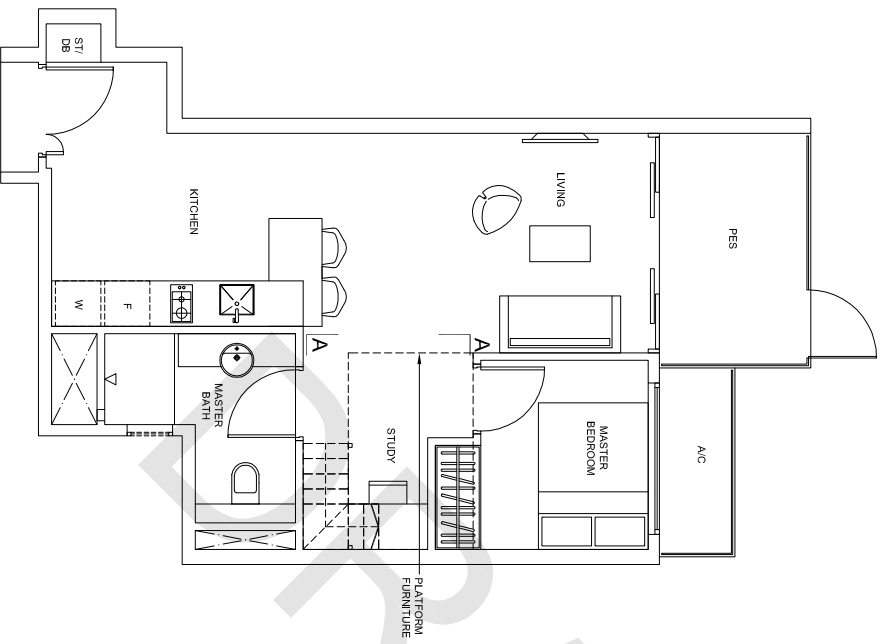
TYPE AS-1G
Area: 51 sq m (include 3 sq m A/C LEDGE, 7 sq m PES)
Unit(s): #04-02*, #04-05, #04-15



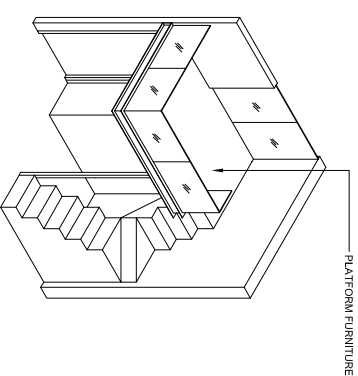
NOTE:
* units in mirror image
+ isometric views have excluded railings drawings
Plans are subject to change as may be required or approved by the relevant authorities. These are not drawn to scale and are for the purpose of visual presentation only. Indicated areas are estimates only and subject to final survey.

1-Bedroom + Study

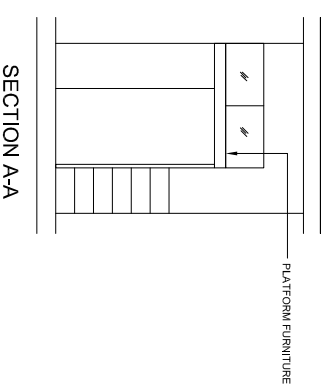
TYPE AS-2G
Area: 53 sq m (include 3 sq m A/C LEDGE, 7 sq m PES)
Unit(s): #04-08



PLATFORM FURNITURE



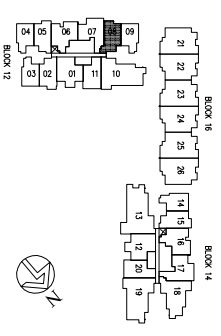
ISOMETRIC VIEW +



SECTION A-A

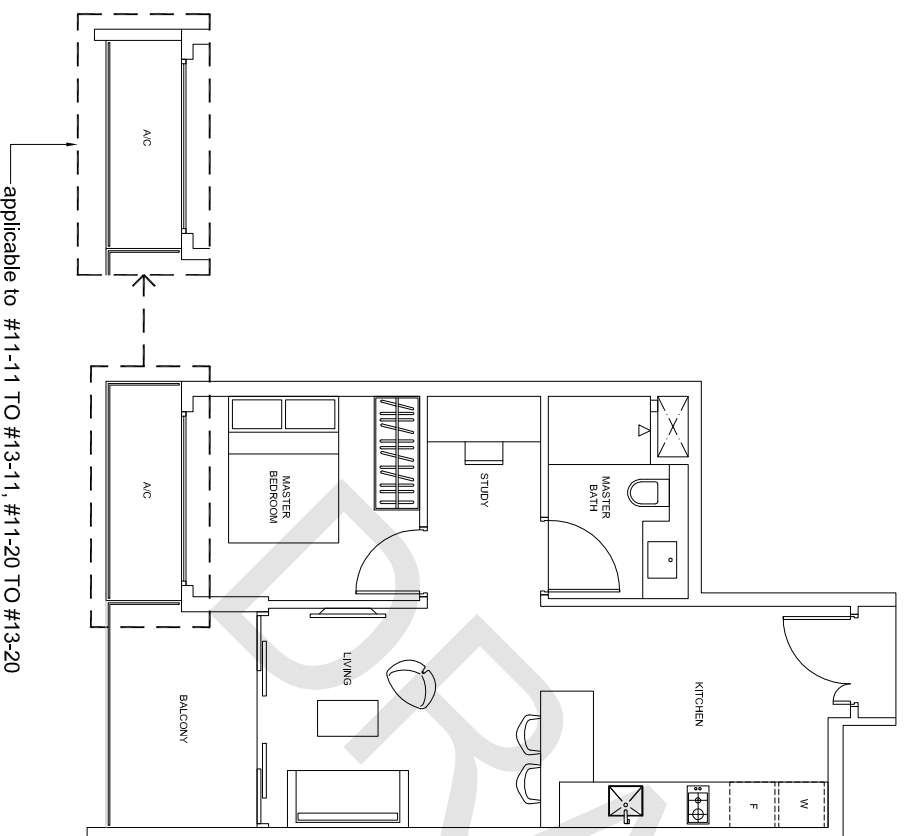
NOTE:
+ Isometric views have excluded railings drawings

Plans are subject to change as may be required or approved by the relevant authorities. These are not drawn to scale and are for the purpose of visual presentation only. Indicated areas are estimates only and subject to final survey.

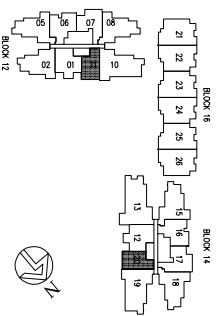


1-Bedroom + Study

TYPE AS-3
Area: 53 sq m (include 3 sq m A/C LEDGE, 6 sq m BALCONY)
Unit(s): #05-11 TO #13-11, #05-20 TO #13-20



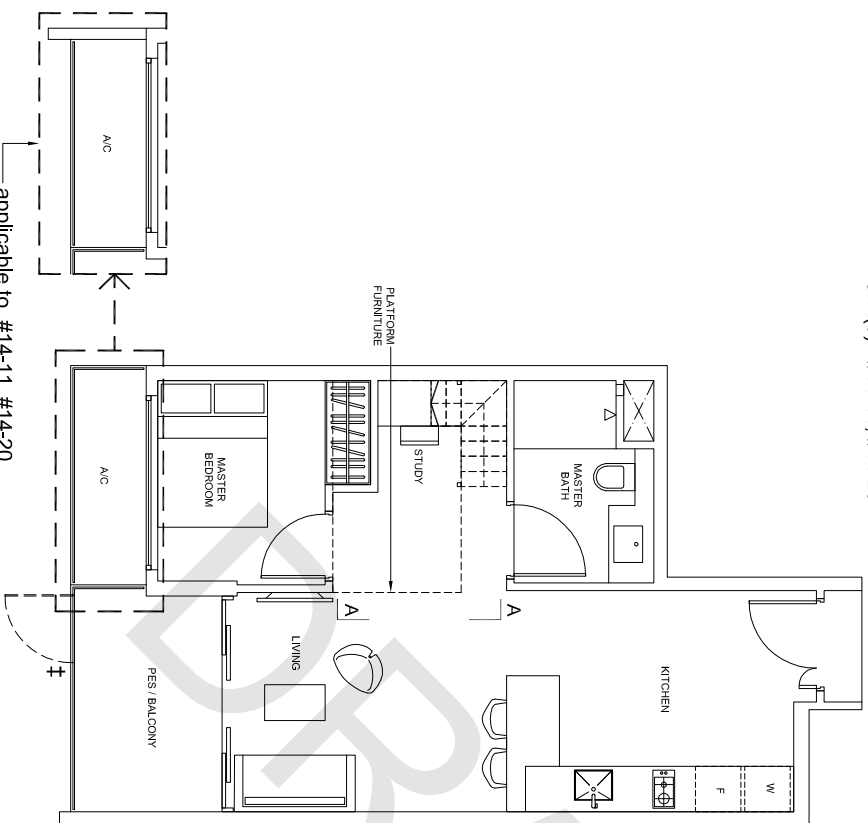
Plans are subject to change as may be required or approved by the relevant authorities. These are not drawn to scale and are for the purpose of visual presentation only. Indicated areas are estimates only and subject to final survey.



1-Bedroom + Study

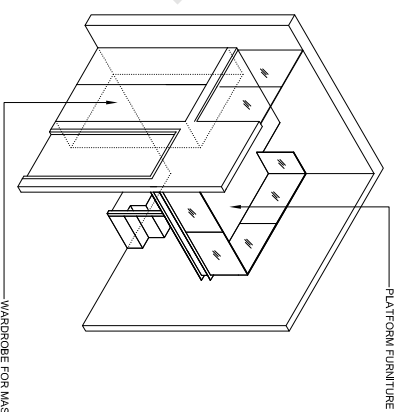
TYPE AS-3G
 Area: 53 sq m (include 3 sq m A/C LEDGE, 6 sq m PES)
 Unit(s): #04-11, #04-20

TYPE AS-3PH
 Area: 53 sq m (include 3 sq m A/C LEDGE, 6 sq m BALCONY)
 Unit(s): #14-11, #14-20

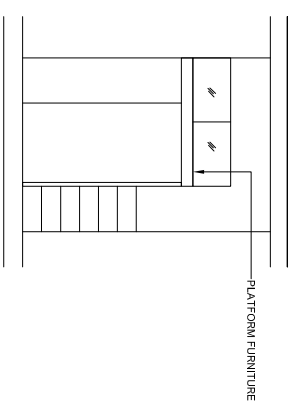


applicable to #14-11, #14-20

PLATFORM FURNITURE

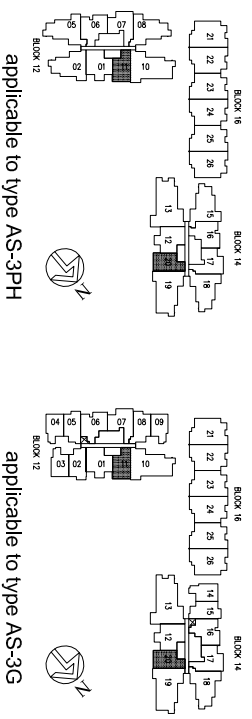


ISOMETRIC VIEW +



NOTE:
 + Isometric views have excluded railings drawings
 ‡ applicable to type AS-3G only

Plans are subject to change as may be required or approved by the relevant authorities. These are not drawn to scale and are for the purpose of visual presentation only. Indicated areas are estimates only and subject to final survey.

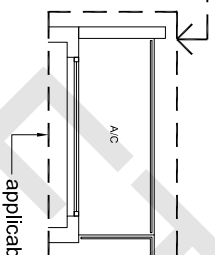
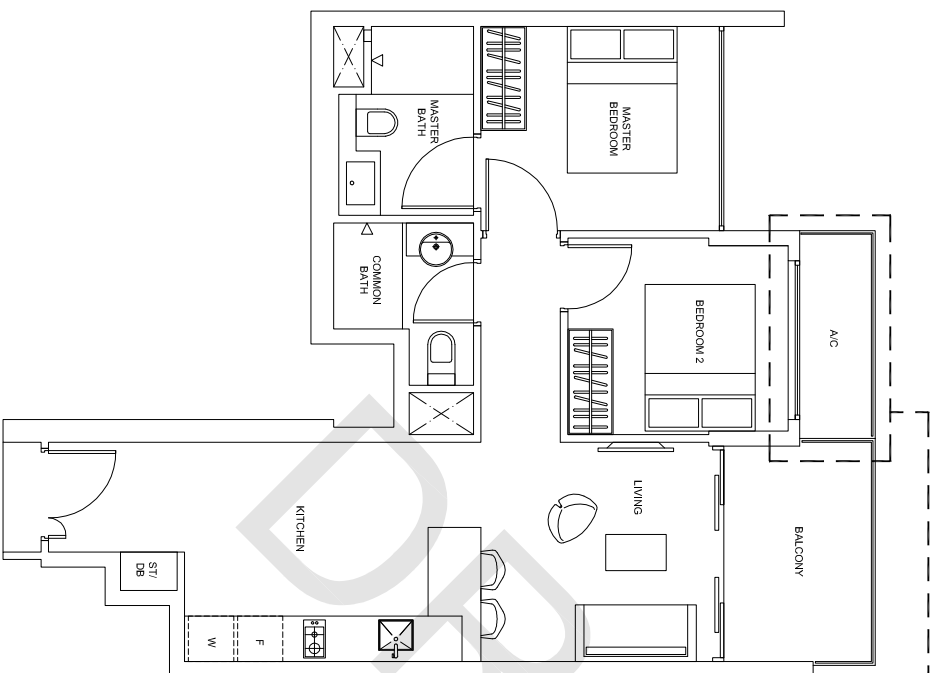


2-Bedroom

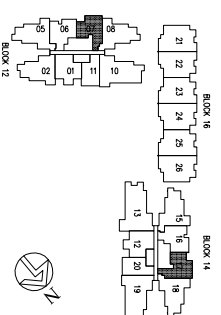
TYPE B-1

Area: 65 sq m (include 3 sq m A/C LEDGE; 6 sq m BALCONY)

Unit(s): #05-07 TO # 13-07, #05-17 TO # 13-17



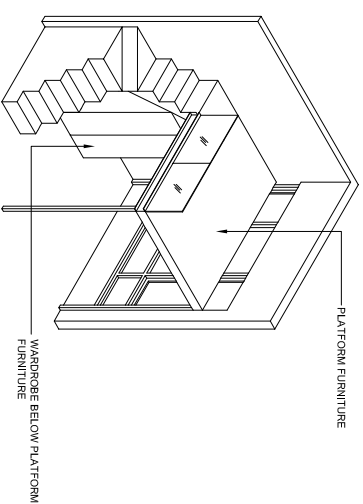
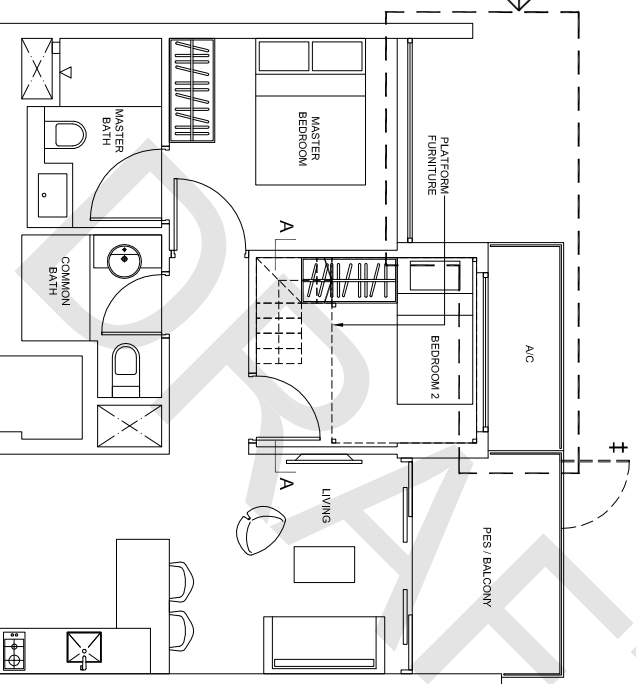
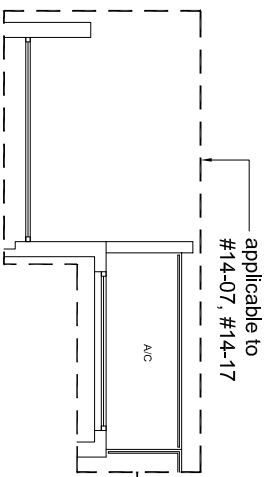
Plans are subject to change as may be required or approved by the relevant authorities. These are not drawn to scale and are for the purpose of visual presentation only. Indicated areas are estimates only and subject to final survey.



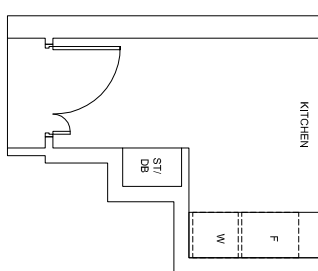
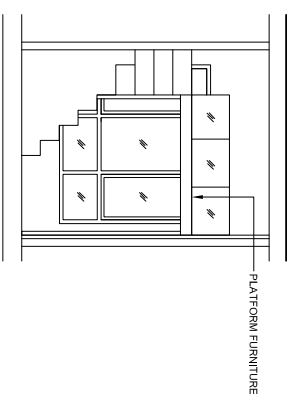
2-Bedroom

TYPE B-1G
 Area: 65 sq m (include 3 sq m A/C LEDGE, 6 sq m PES)
 Unit(s): #04-07, #04-17

TYPE B-1PH
 Area: 65 sq m (include 3 sq m A/C LEDGE, 6 sq m BALCONY)
 Unit(s): #14-07, #14-17

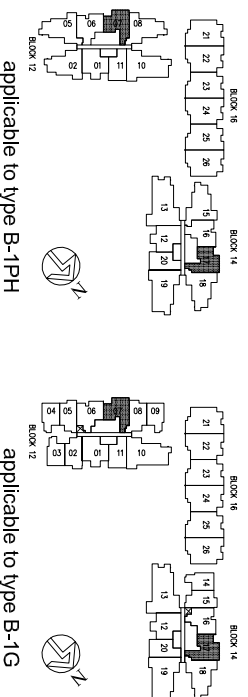


ISOMETRIC VIEW +



NOTE:
 + isometric views have excluded railings drawings
 † applicable to type B-1G only

Plans are subject to change as may be required or approved by the relevant authorities. These are not drawn to scale and are for the purpose of visual presentation only. Indicated areas are estimates only and subject to final survey.

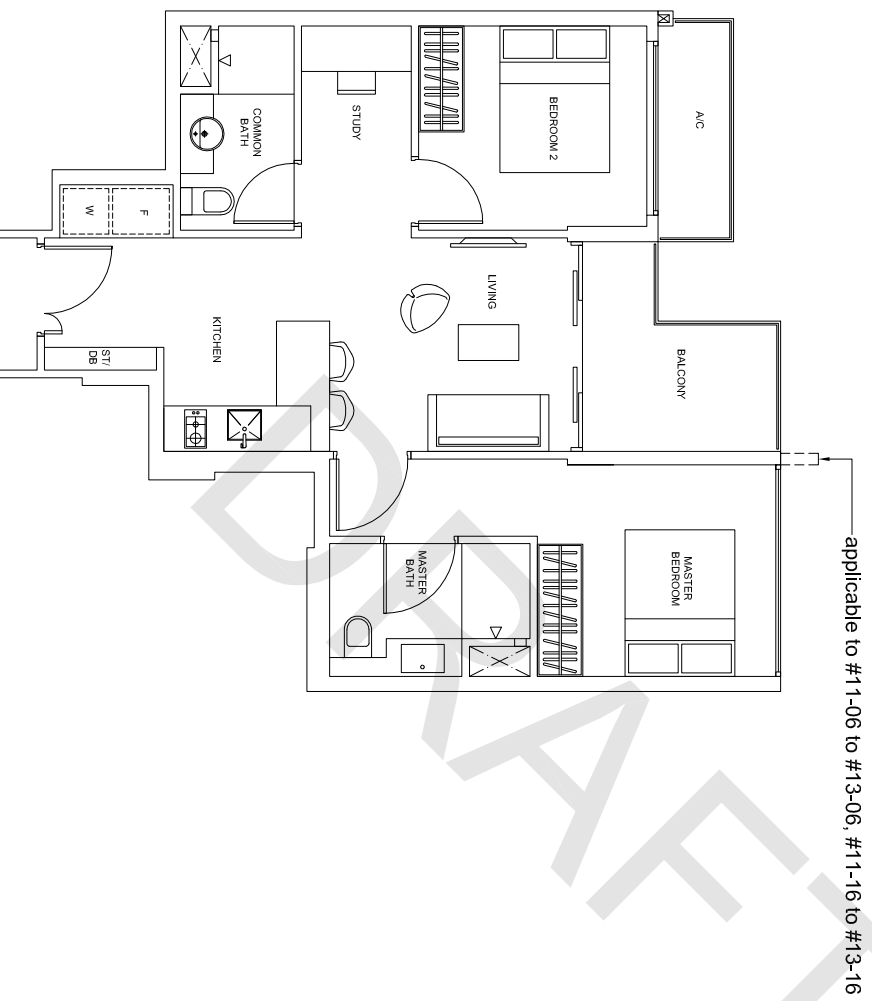


2-Bedroom + Study

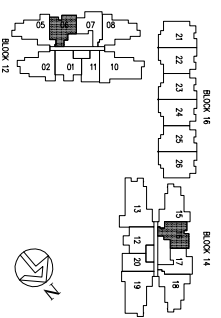
TYPE BS-1

Area: 66 sq m (Include 3 sq m A/C LEDGE, 6 sq m BALCONY)

Unit(s): #05-06 TO #13-06, #05-16 TO #13-16



Plans are subject to change as may be required or approved by the relevant authorities. These are not drawn to scale and are for the purpose of visual presentation only. Indicated areas are estimates only and subject to final survey.



2-Bedroom + Study

TYPE BS-1G

Area: 66 sq m (include 3 sq m A/C LEDGE, 6 sq m PES)

Unit(s): #04-06, #04-16

TYPE BS-1PH

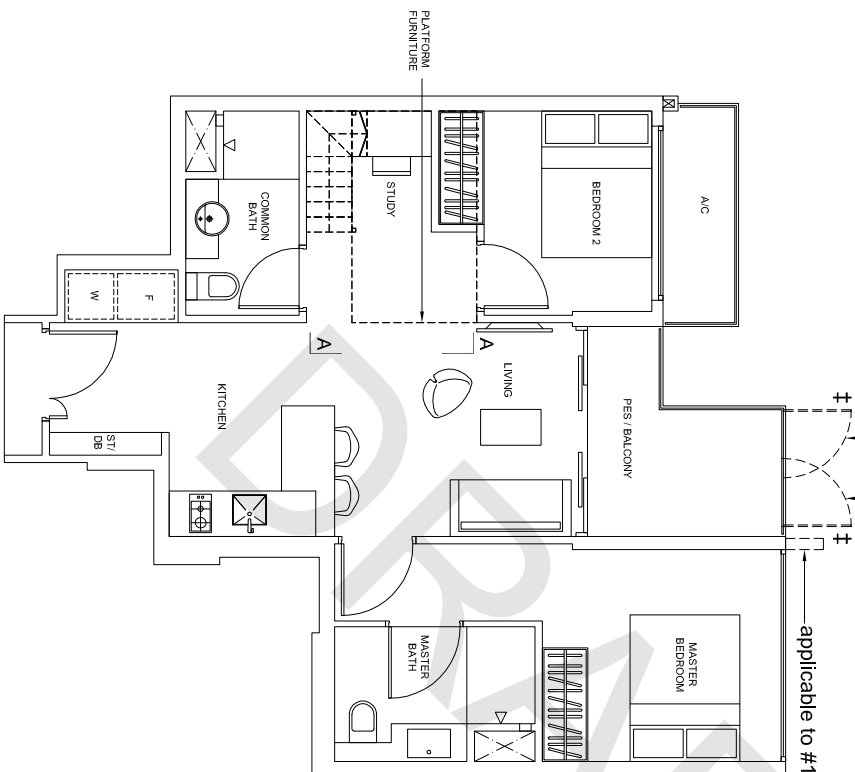
Area: 66 sq m (include 3 sq m A/C LEDGE, 6 sq m BALCONY)

Unit(s): #14-06, #14-16

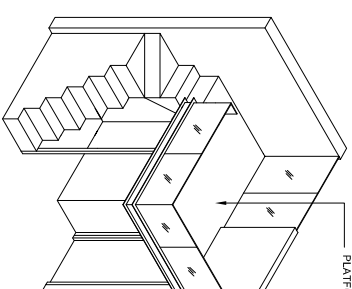
applicable to #04-06

applicable to #04-16

applicable to #14-06, #14-16

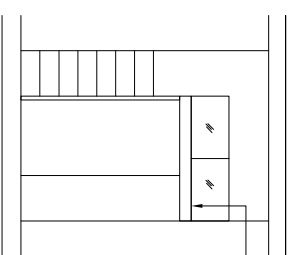


PLATFORM FURNITURE



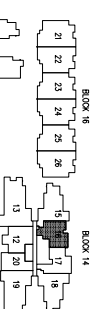
PLATFORM FURNITURE

ISOMETRIC VIEW +

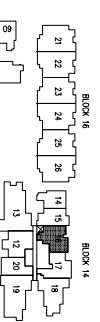


PLATFORM FURNITURE

SECTION A-A



applicable to type BS-1PH



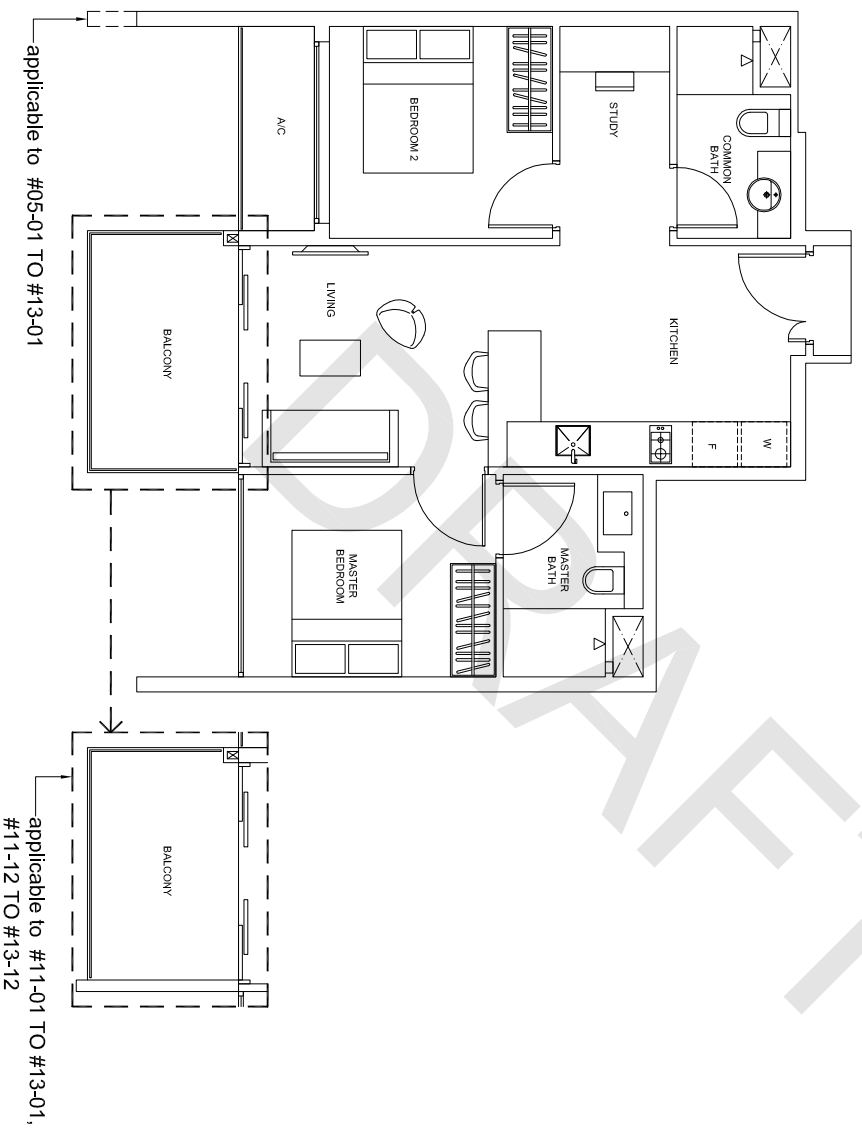
applicable to type BS-1G

NOTE:
+ isometric views have excluded railings drawings
‡ applicable to type BS-1G only

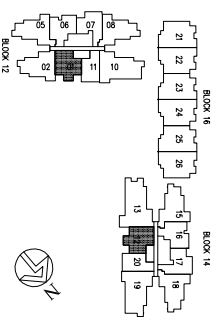
Plans are subject to change as may be required or approved by the relevant authorities. These are not drawn to scale and are for the purpose of visual presentation only. Indicated areas are estimates only and subject to final survey.

2-Bedroom + Study

TYPE BS-2
Area: 66 sq m (include 3 sq m A/C LEDGE, 6 sq m BALCONY)
Unit(s): #05-01 TO #13-01, #05-12 TO #13-12



Plans are subject to change as may be required or approved by the relevant authorities. These are not drawn to scale and are for the purpose of visual presentation only. Indicated areas are estimates only and subject to final survey.



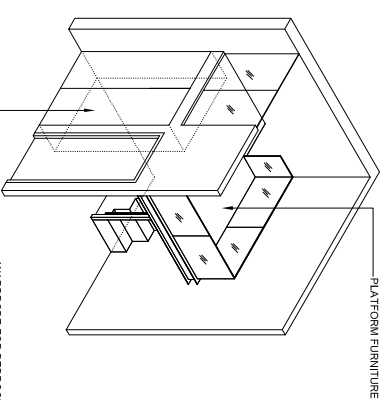
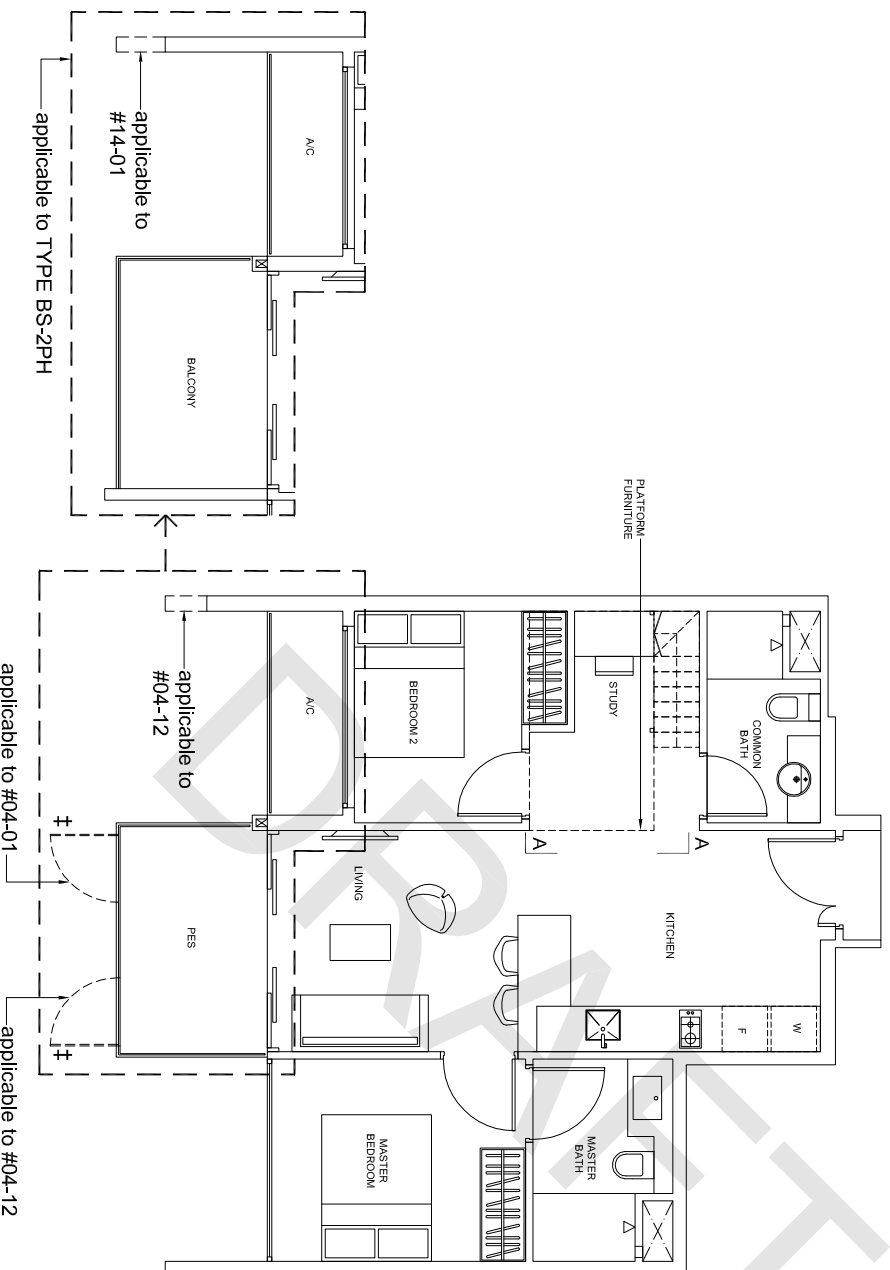
2-Bedroom + Study

TYPE BS-2G

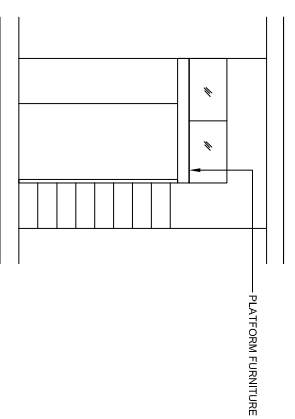
Area: 66 sq m (include 3 sq m A/C LEDGE, 6 sq m PES)
Unit(s): #04-01, #04-12

TYPE BS-2PH

Area: 66 sq m (include 3 sq m A/C LEDGE, 6 sq m BALCONY)
Unit(s): #14-01, #14-12



ISOMETRIC VIEW +



SECTION AA



applicable to type BS-2PH

applicable to type BS-2G

NOTE:
+ isometric views have excluded railings drawings
‡ applicable to type BS-2G only

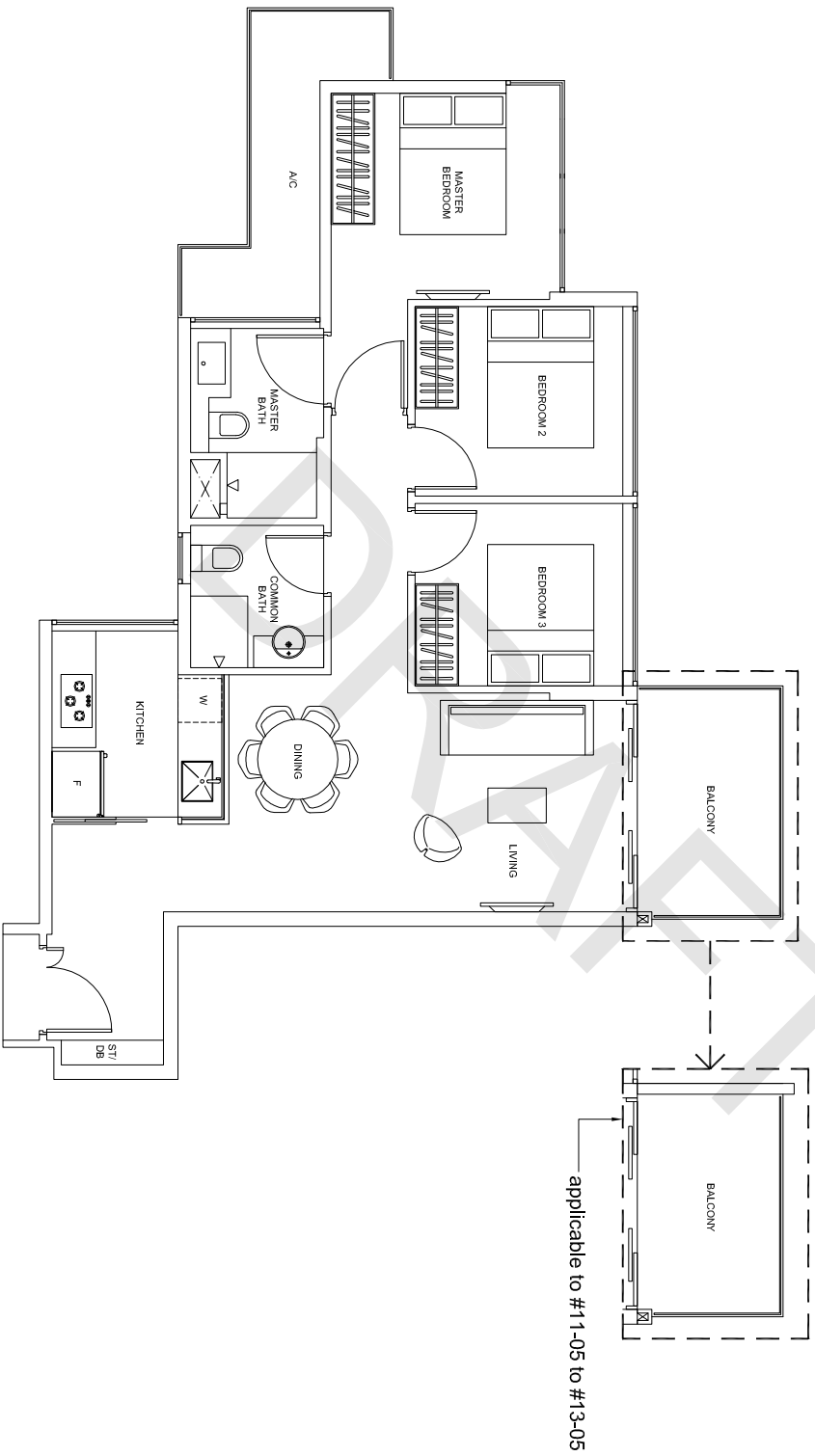
Plans are subject to change as may be required or approved by the relevant authorities. These are not drawn to scale and are for the purpose of visual presentation only. Indicated areas are estimates only and subject to final survey.

3-Bedroom

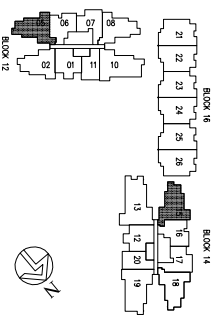
TYPE C-1

Area: 86 sq m (include 7 sq m A/C LEDGE, 7 sq m BALCONY)

Unit(s): #05-05 TO #13-05; #05-15 TO #10-15



Plans are subject to change as may be required or approved by the relevant authorities. These are not drawn to scale and are for the purpose of visual presentation only. Indicated areas are estimates only and subject to final survey.

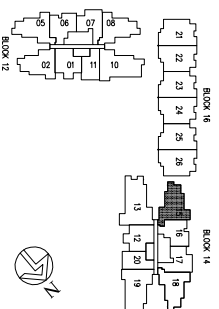
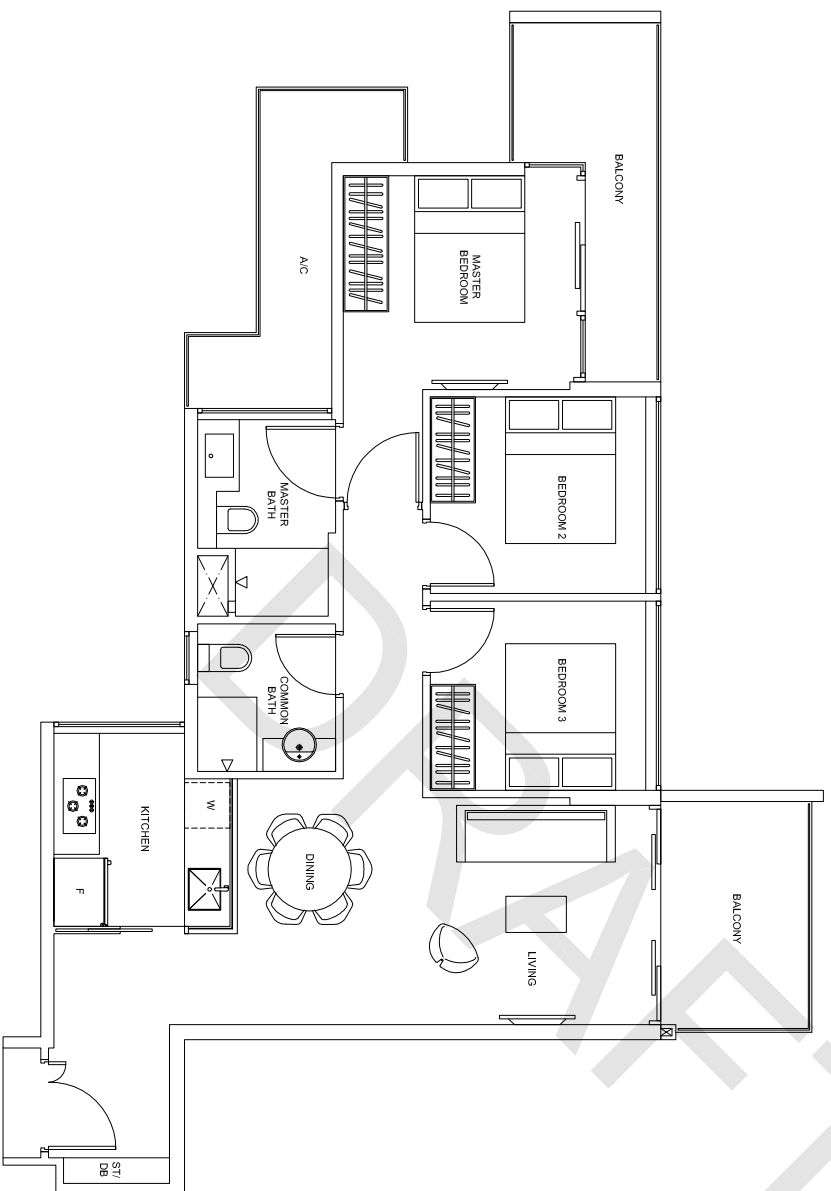


3-Bedroom

TYPE C-1a

Area: 93 sq m (include 7 sq m A/C LEDGE, 13 sq m BALCONY)

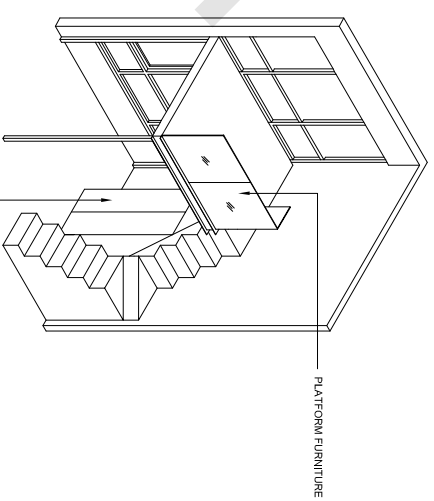
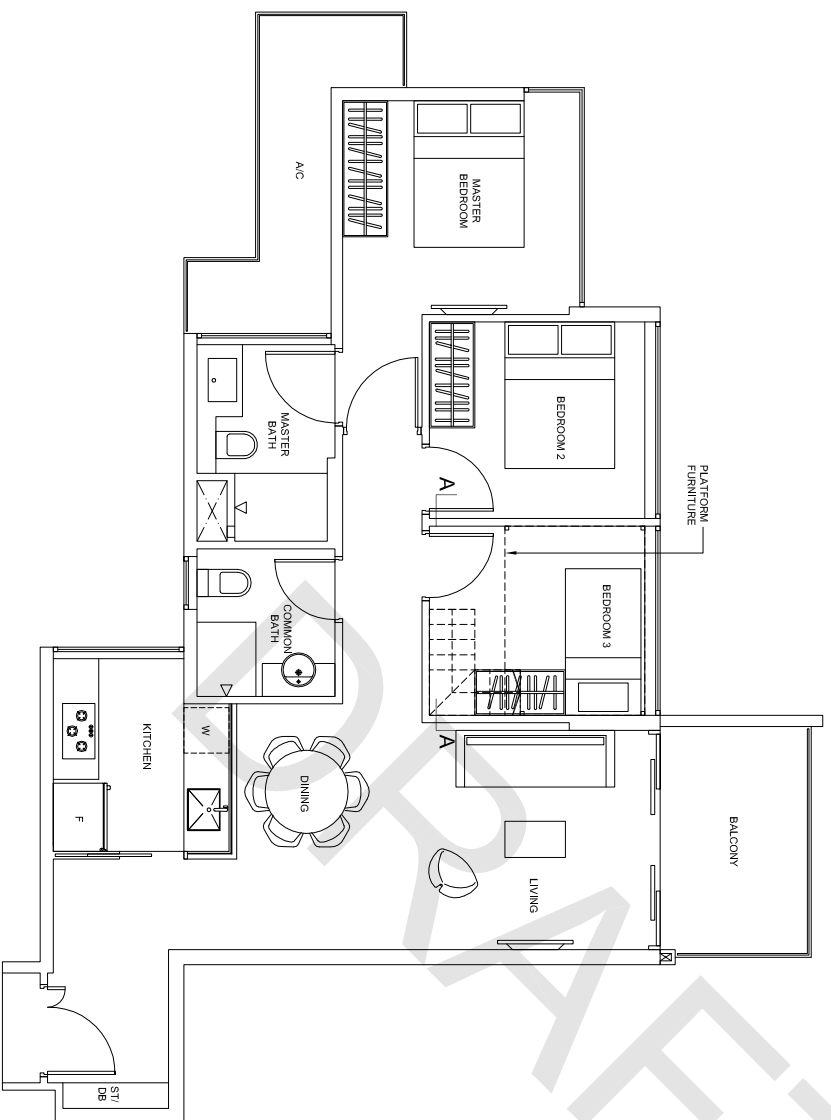
Unit(s): #11-15 TO #13-15



Plans are subject to change as may be required or approved by the relevant authorities. These are not drawn to scale and are for the purpose of visual presentation only. Indicated areas are estimates only and subject to final survey.

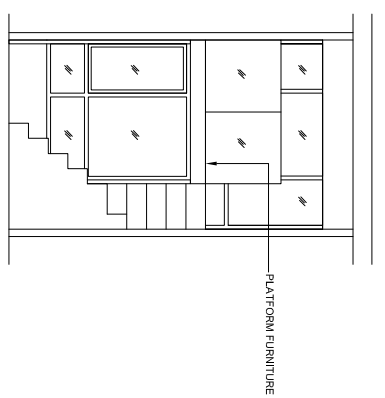
3-Bedroom

TYPE C-1PH
 Area: 86 sq m (include 7 sq m A/C LEDGE, 7 sq m BALCONY)
 Unit(s) : #14-05

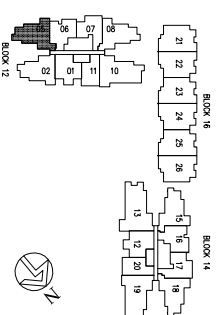


PLATFORM FURNITURE

ISOMETRIC VIEW +



SECTION A-A

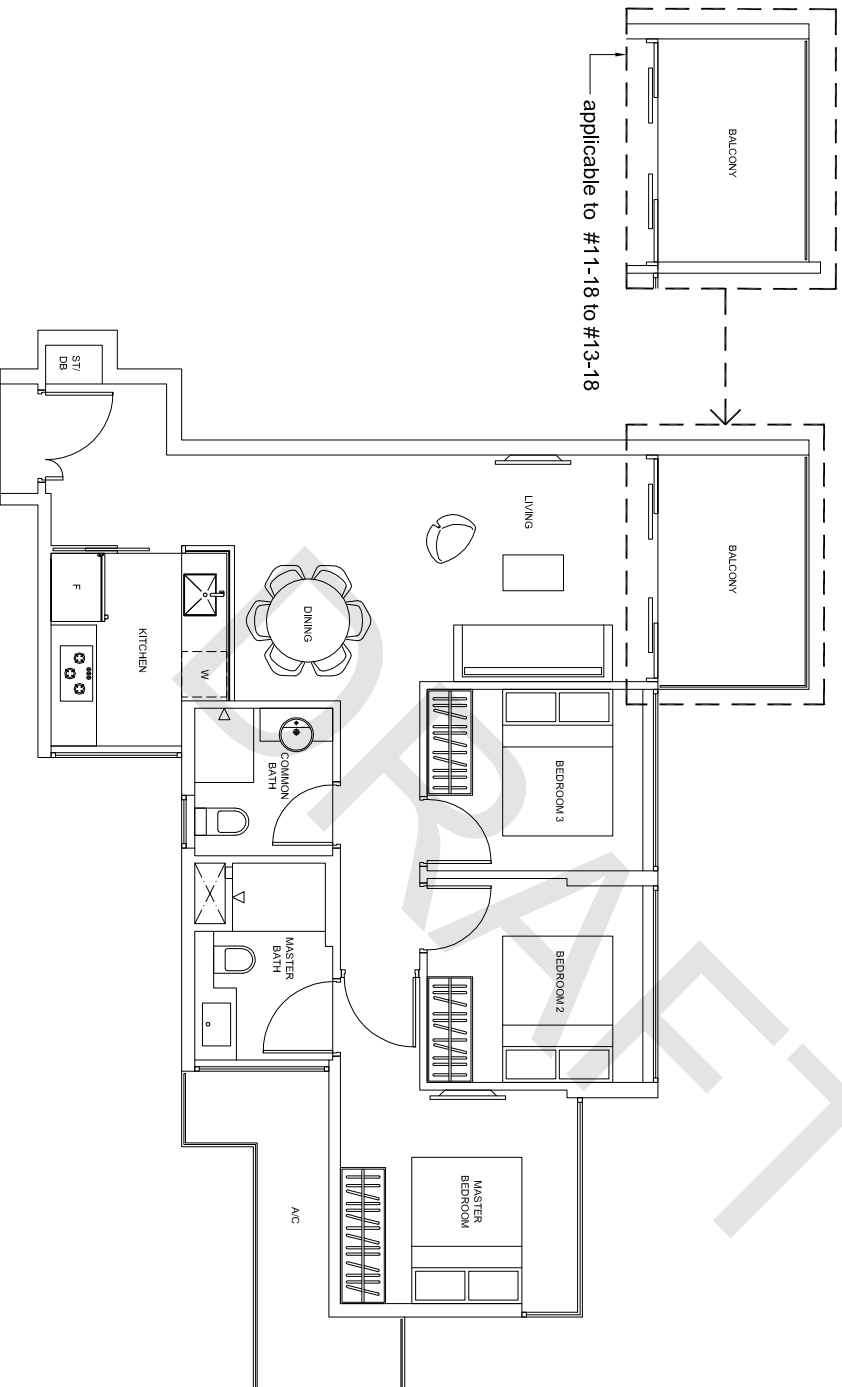


NOTE:
 + Isometric views have excluded railings drawings

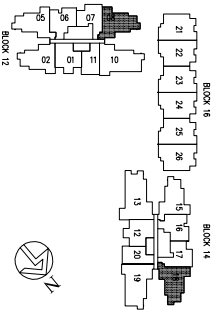
Plans are subject to change as may be required or approved by the relevant authorities. These are not drawn to scale and are for the purpose of visual presentation only. Indicated areas are estimates only and subject to final survey.

3-Bedroom

TYPE C-2
Area: 85 sq m (include 7 sq m A/C LEDGE, 7 sq m BALCONY)
Unit(s): #05-08 TO #10-08, #05-18 TO #13-18

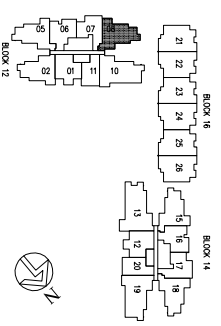
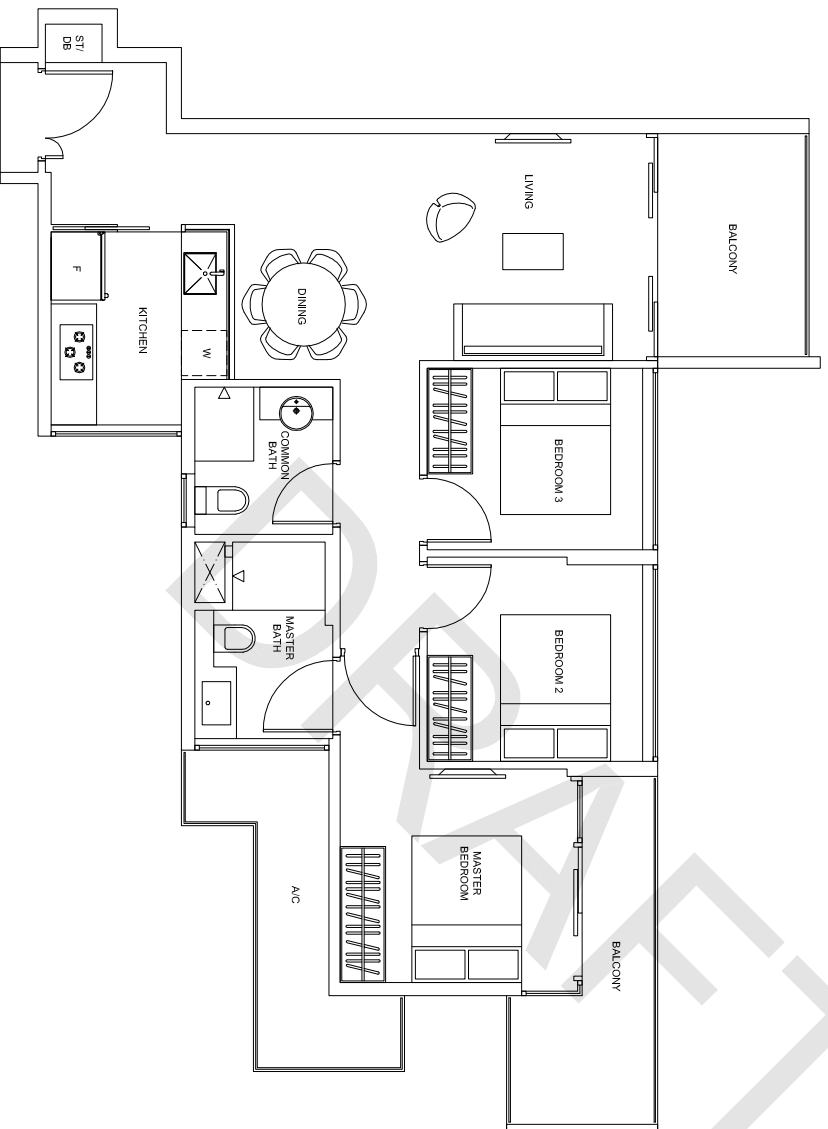


Plans are subject to change as may be required or approved by the relevant authorities. These are not drawn to scale and are for the purpose of visual presentation only. Indicated areas are estimates only and subject to final survey.



3-Bedroom

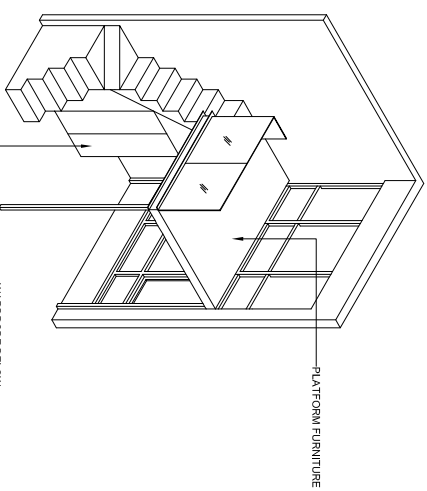
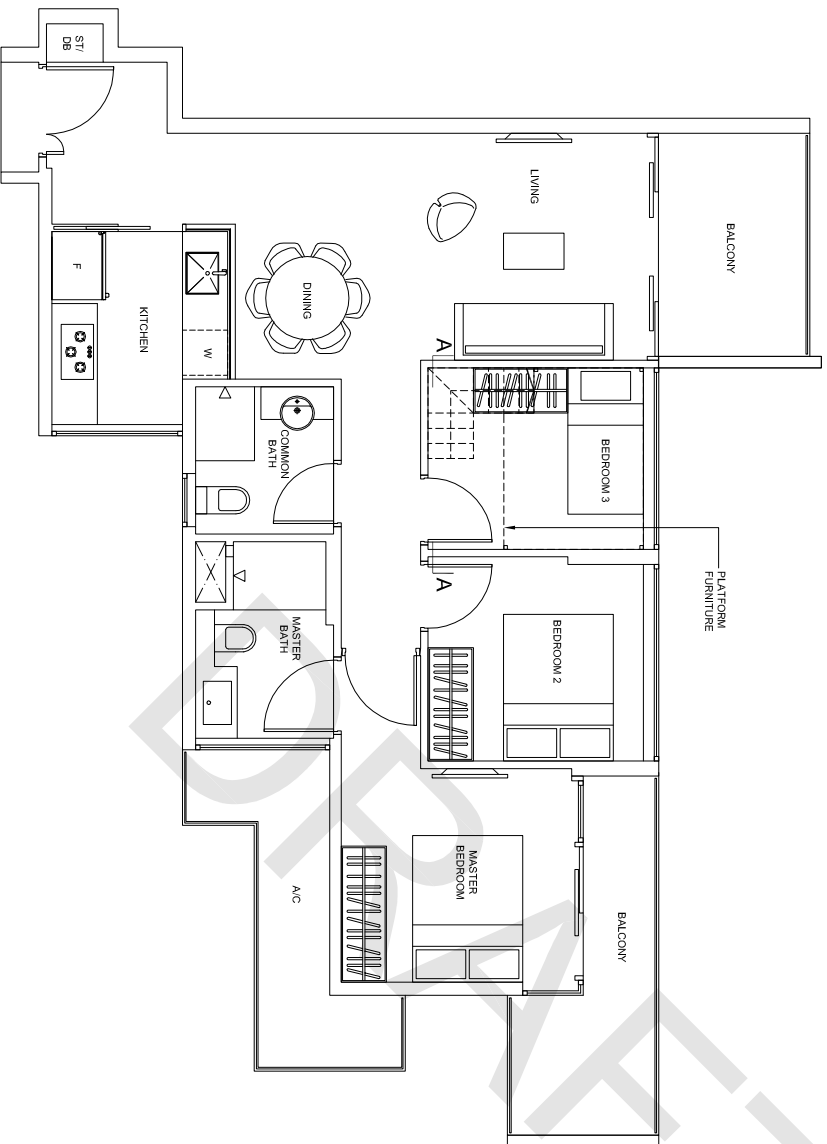
TYPE C-2a
Area: 92 sq m (include 7 sq m A/C LEDGE, 13 sq m BALCONY)
Unit(s): #11-08 TO #13-08



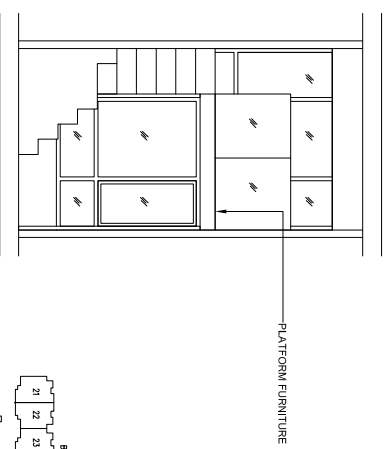
Plans are subject to change as may be required or approved by the relevant authorities. These are not drawn to scale and are for the purpose of visual presentation only. Indicated areas are estimates only and subject to final survey.

3-Bedroom

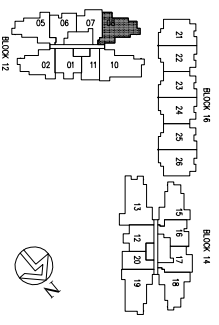
TYPE C-2APH
Area: 92 sq m (include 7 sq m A/C LEDGE, 13 sq m BALCONY)
Unit(s) : #14-08



ISOMETRIC VIEW +



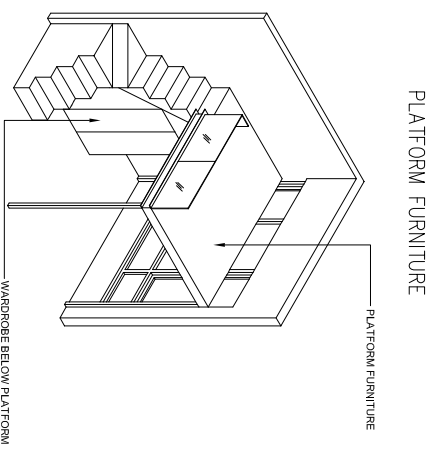
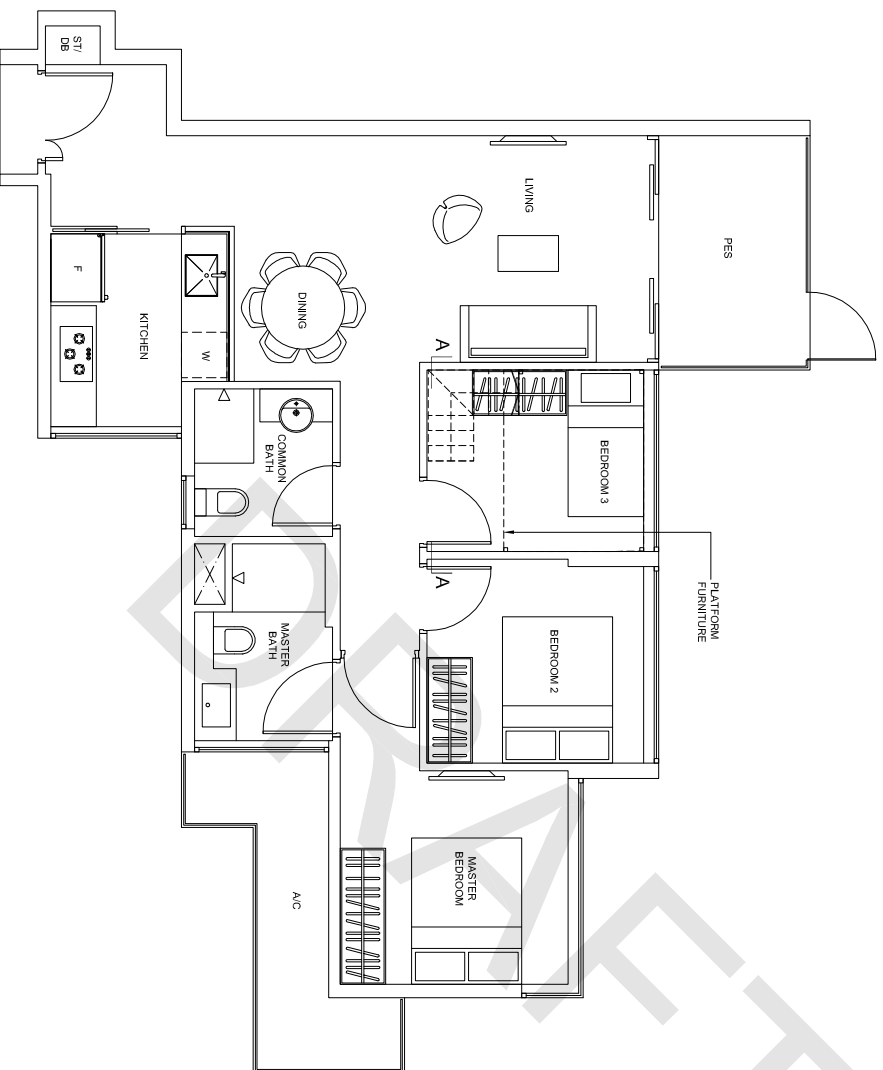
SECTION A-A



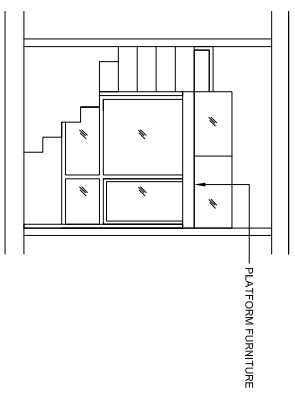
NOTE:
+ isometric views have excluded railings drawings
Plans are subject to change as may be required or approved by the relevant authorities. These are not drawn to scale and are for the purpose of visual presentation only. Indicated areas are estimates only and subject to final survey.

3-Bedroom

TYPE C-2G
 Area: 85 sq m (include 7 sq m A/C LEDGE, 7 sq m PES)
 Unit(s): #04-18

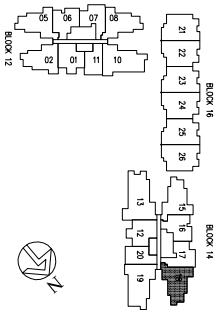


ISOMETRIC VIEW +



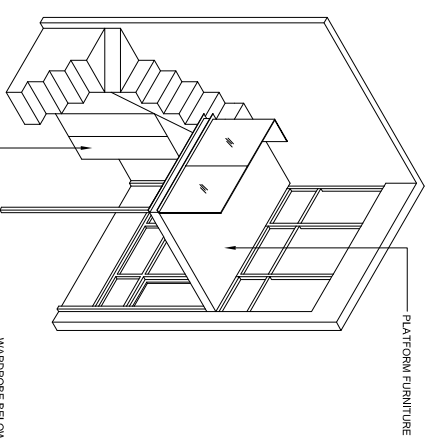
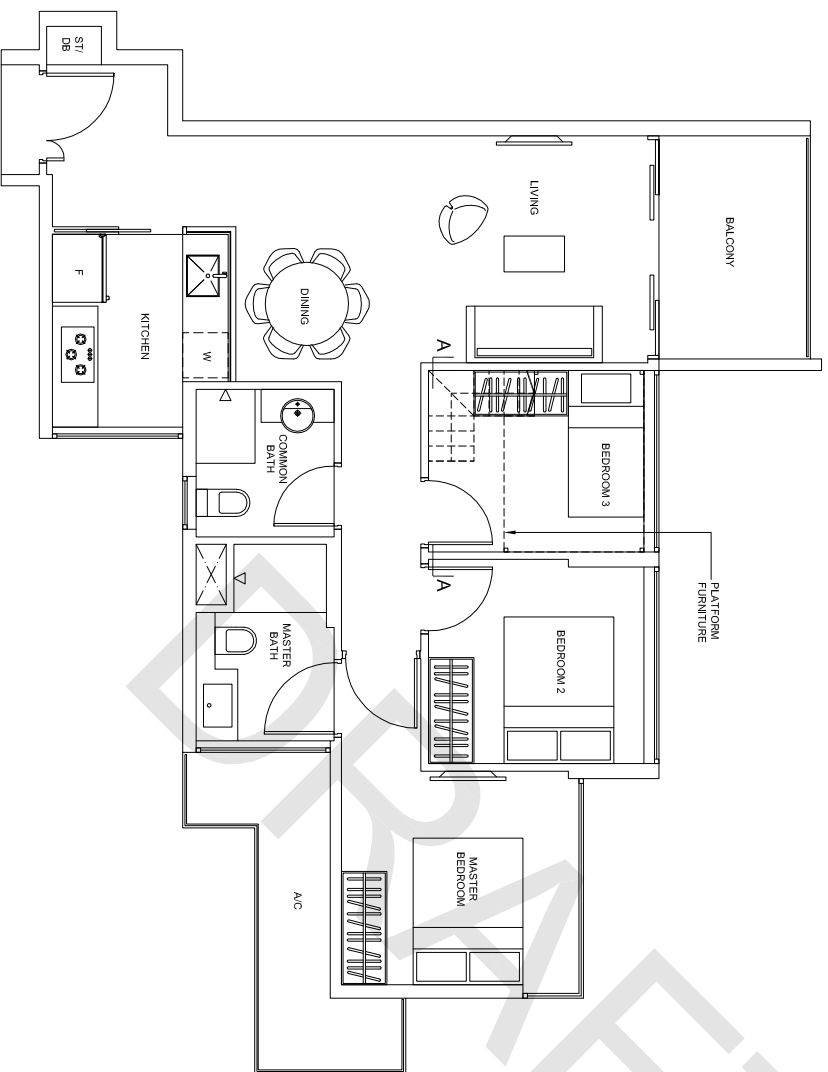
SECTION A-A

NOTE:
 + isometric views have excluded railings drawings
 Plans are subject to change as may be required or approved by the relevant authorities. These are not drawn to scale and are for the purpose of visual presentation only. Indicated areas are estimates only and subject to final survey.

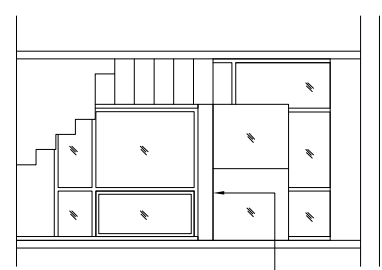


3-Bedroom

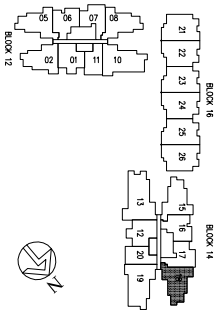
TYPE C-2PH
Area: 85 sq m (include 7 sq m A/C LEDGE, 6 sq m BALCONY)
Unit(s): #14-18



ISOMETRIC VIEW +



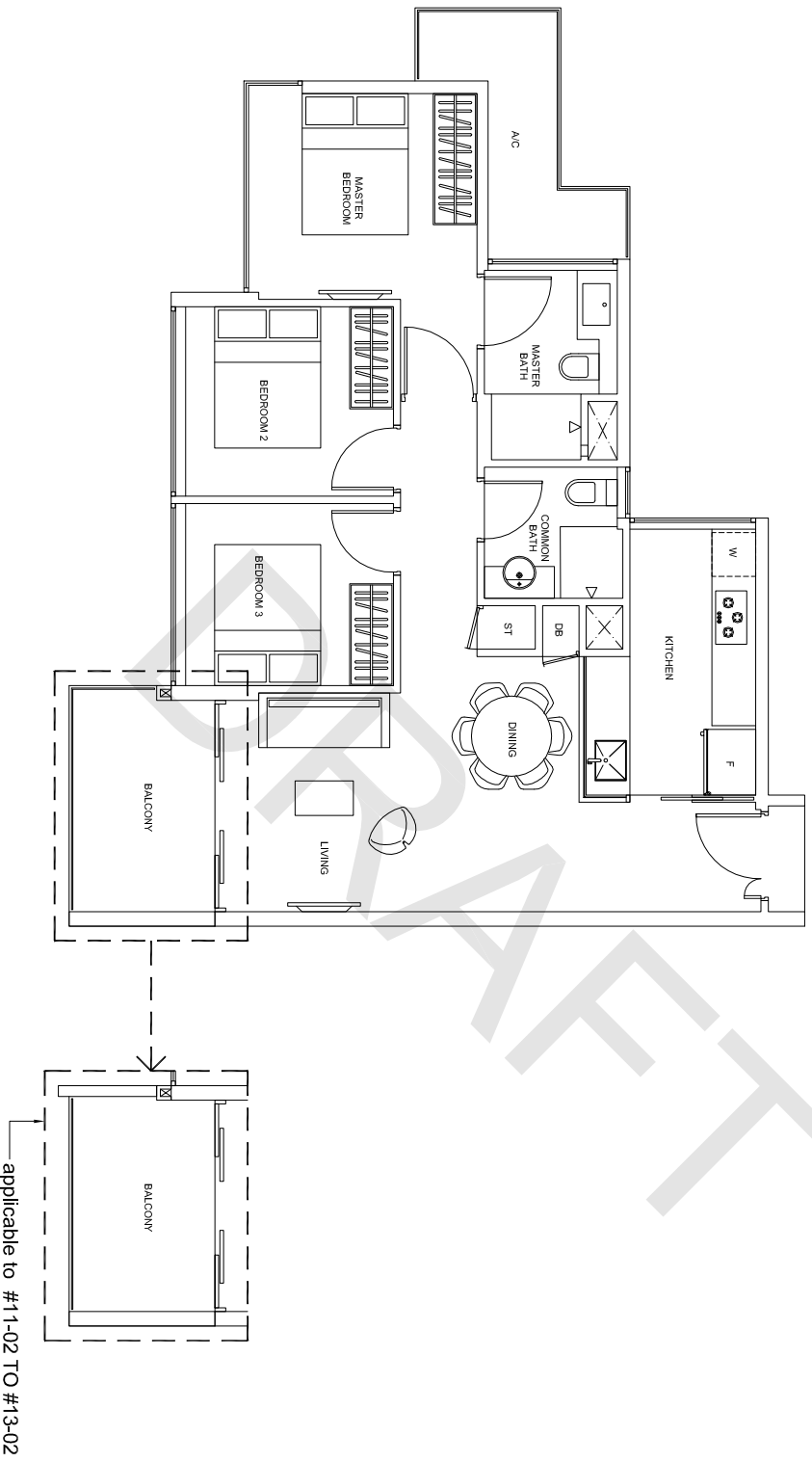
SECTION A-A



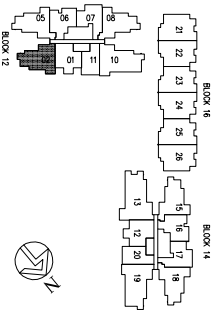
NOTE:
 + isometric views have excluded railings drawings
 Plans are subject to change as may be required or approved by the relevant authorities. These are not drawn to scale and are for the purpose of visual presentation only. Indicated areas are estimates only and subject to final survey.

3-Bedroom

TYPE C-3
Area: 84 sq m (include 6 sq m A/C LEDGE; 7 sq m BALCONY)
Unit(s): #05-02 TO #13-02

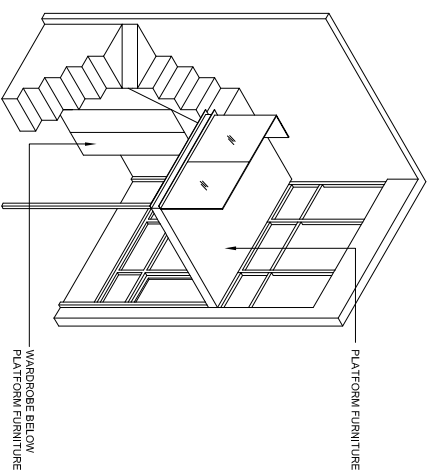
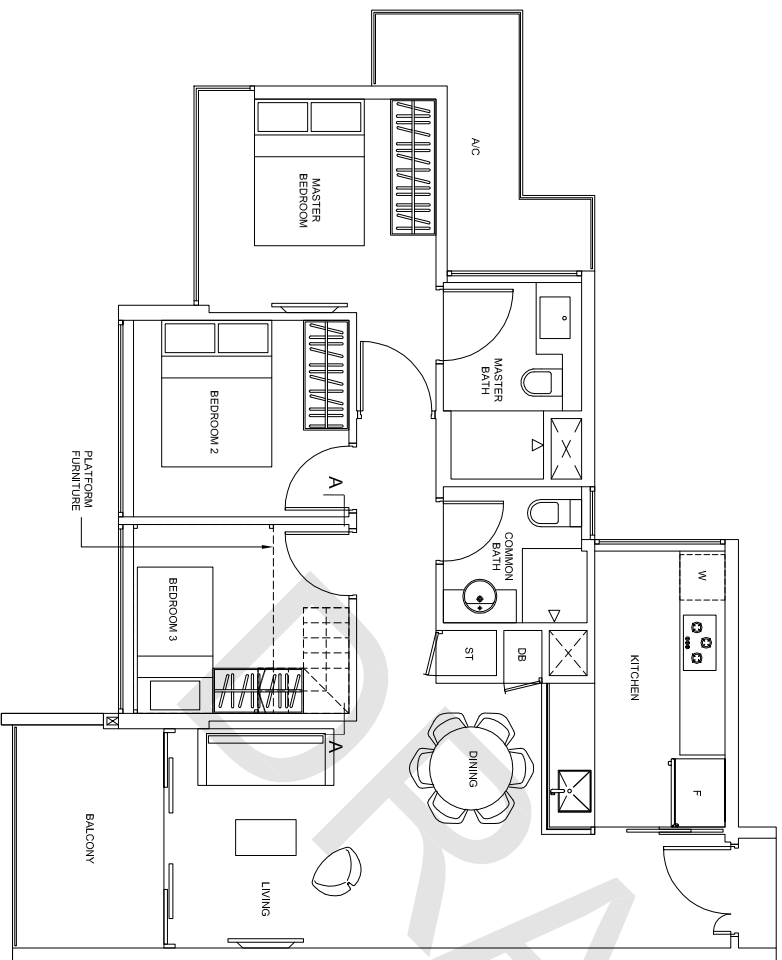


Plans are subject to change as may be required or approved by the relevant authorities. These are not drawn to scale and are for the purpose of visual presentation only. Indicated areas are estimates only and subject to final survey.

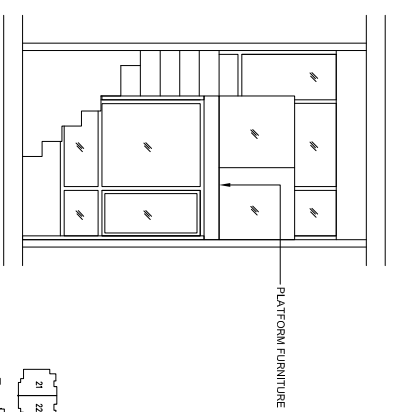


3-Bedroom

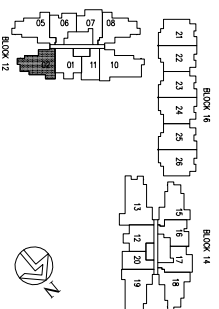
TYPE C-3PH
 Area: 84 sq m (include 6 sq m A/C LEDGE, 7 sq m BALCONY)
 Unit(s) : #14-02



ISOMETRIC VIEW +



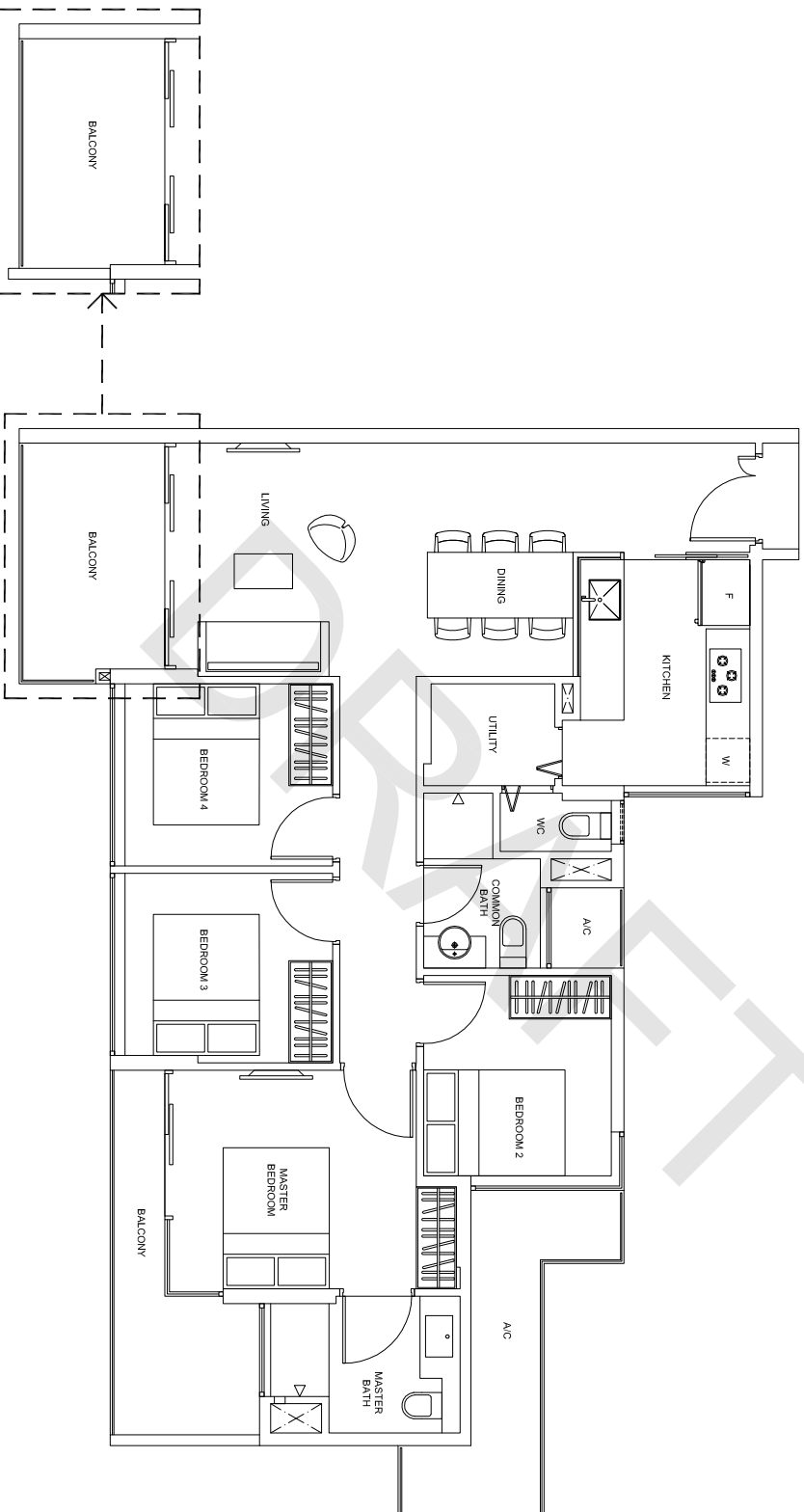
SECTION A-A



NOTE:
 + isometric views have excluded railings drawings
 Plans are subject to change as may be required or approved by the relevant authorities. These are not drawn to scale and are for the purpose of visual presentation only. Indicated areas are estimates only and subject to final survey.

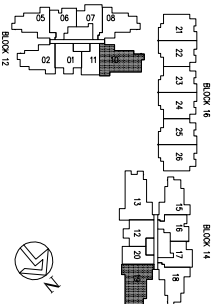
4-Bedroom

TYPE D
Area: 109 sq m (include 8 sq m A/C LEDGE, 13 sq m BALCONY)
Unit(s): #05-10 TO #13-10, #05-19 TO #13-19



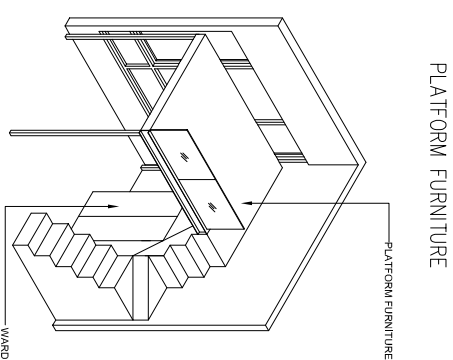
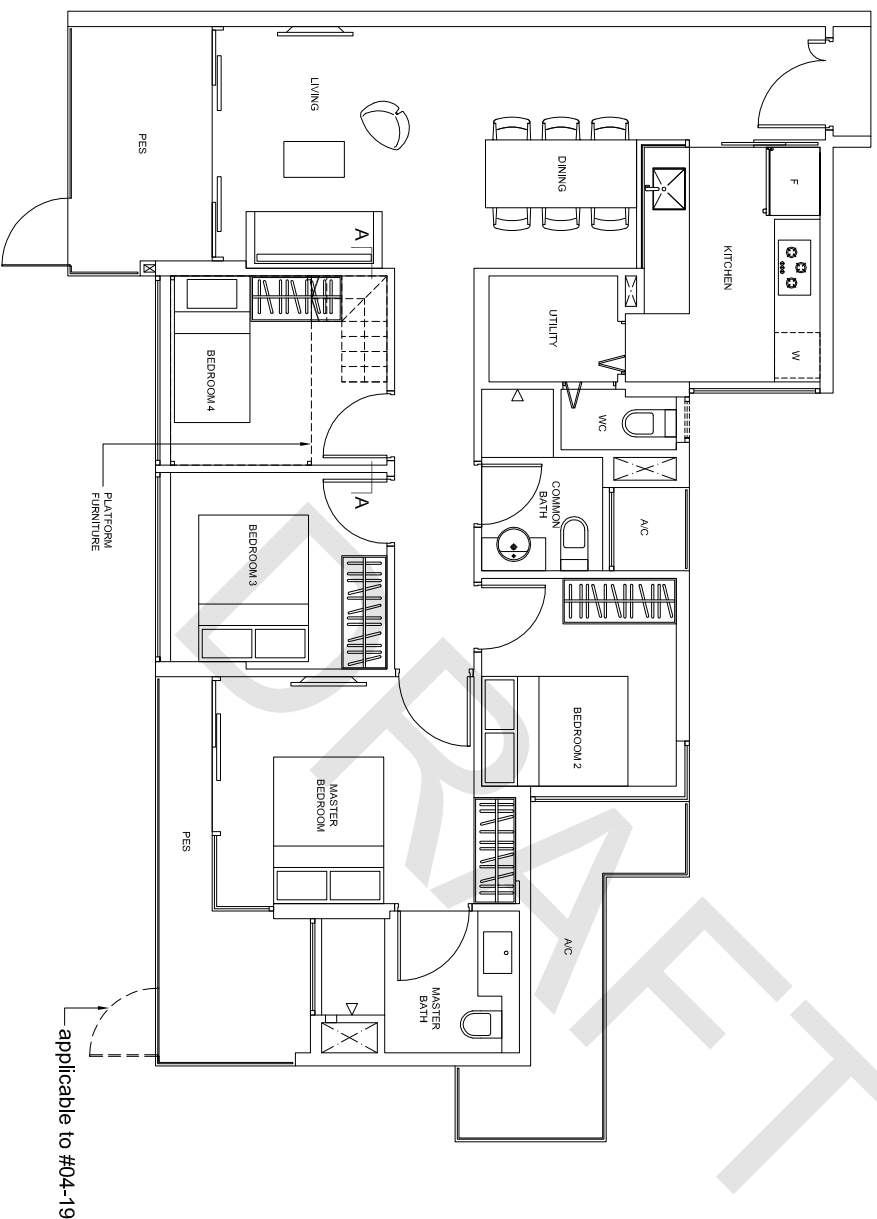
applicable to #11-10 TO #13-10,
#11-19 TO #13-19

Plans are subject to change as may be required or approved by the relevant authorities. These are not drawn to scale and are for the purpose of visual presentation only. Indicated areas are estimates only and subject to final survey.

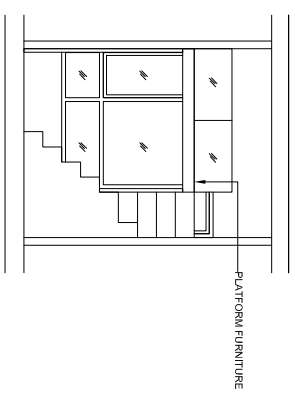


4-Bedroom

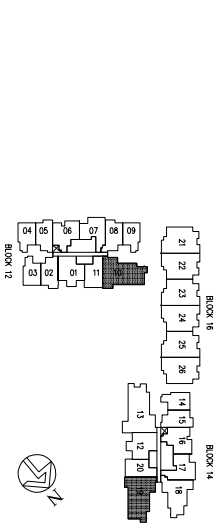
TYPE D-G
 Area: 109 sq m (include 8 sq m A/C LEDGE, 13 sq m PES)
 Unit(s): #04-10, #04-19



ISOMETRIC VIEW +



SECTION A-A

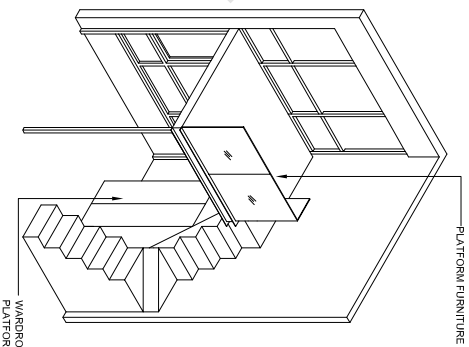


NOTE:
 + isometric views have excluded railings drawings

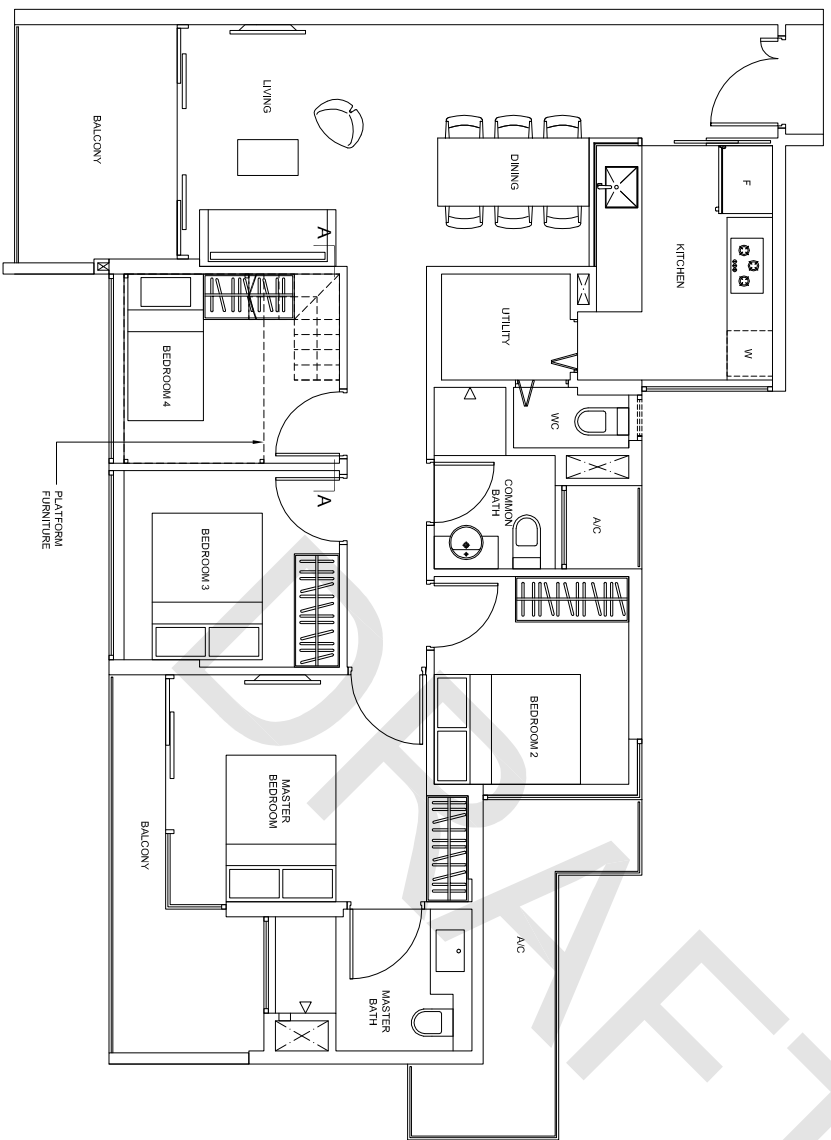
Plans are subject to change as may be required or approved by the relevant authorities. These are not drawn to scale and are for the purpose of visual presentation only. Indicated areas are estimates only and subject to final survey.

4-Bedroom

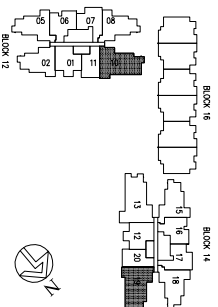
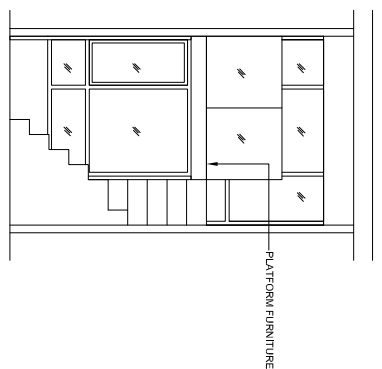
PLATFORM FURNITURE



TYPE D-PH
Area: 109 sq m (include 8 sq m A/C LEDGE, 13 sq m BALCONY)
Unit(s): #14-10, #14-19



ISOMETRIC VIEW +



NOTE:
+ isometric views have excluded railings drawings
Plans are subject to change as may be required or approved by the relevant authorities. These are not drawn to scale and are for the purpose of visual presentation only. Indicated areas are estimates only and subject to final survey.

5-Bedroom

TYPE E

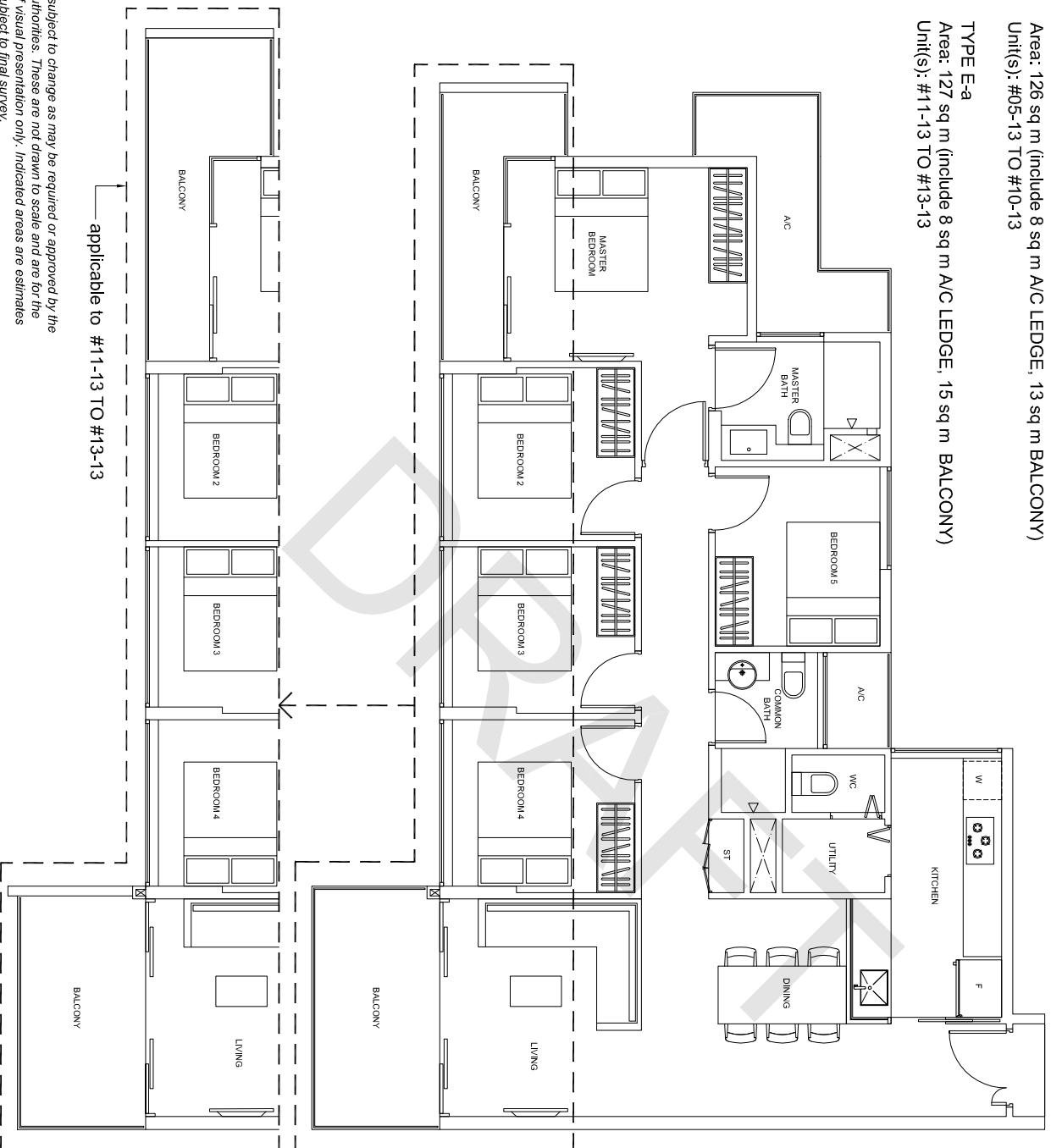
Area: 126 sq m (include 8 sq m A/C LEDGE, 13 sq m BALCONY)

Unit(s): #05-13 TO #10-13

TYPE E-a

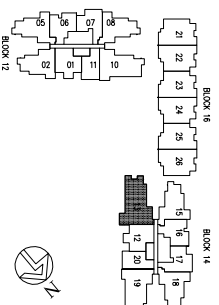
Area: 127 sq m (include 8 sq m A/C LEDGE, 15 sq m BALCONY)

Unit(s): #11-13 TO #13-13



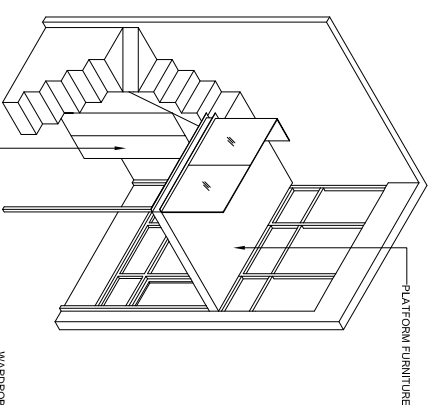
applicable to #11-13 TO #13-13

Plans are subject to change as may be required or approved by the relevant authorities. These are not drawn to scale and are for the purpose of visual presentation only. Indicated areas are estimates only and subject to final survey.



5-Bedroom

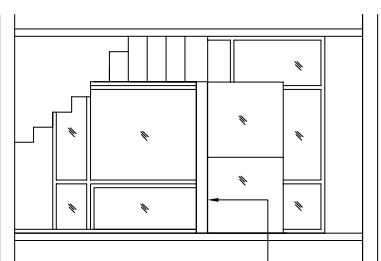
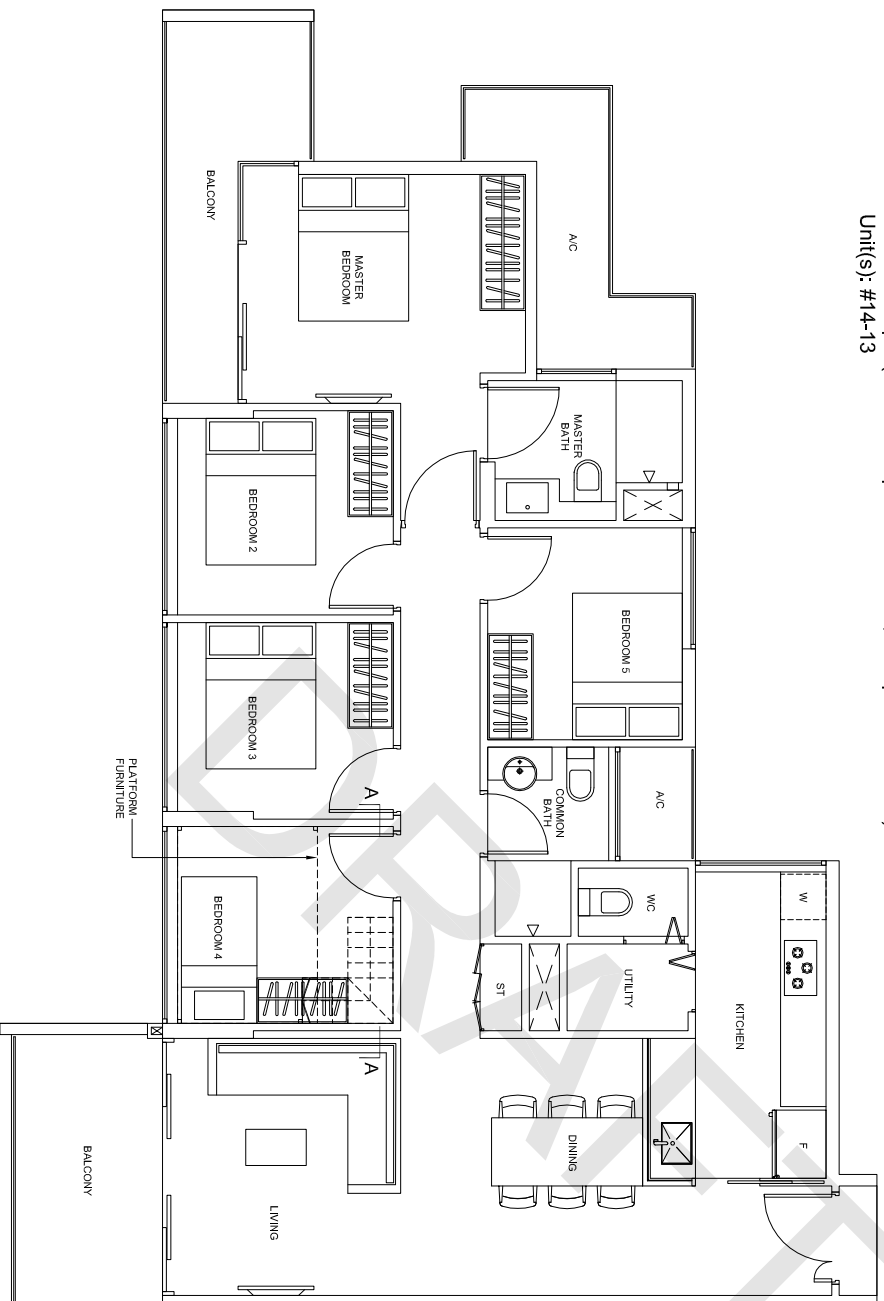
PLATFORM FURNITURE



ISOMETRIC VIEW +

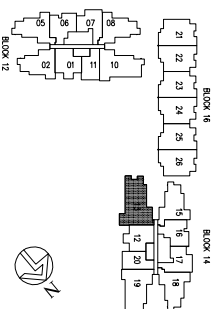
WARDROBE BELOW PLATFORM FURNITURE

TYPE E-APH
 Area: 127 sq m (include 8 sq m A/C LEDGE, 15 sq m BALCONY)
 Unit(s): #14-13



SECTION A-A

PLATFORM FURNITURE

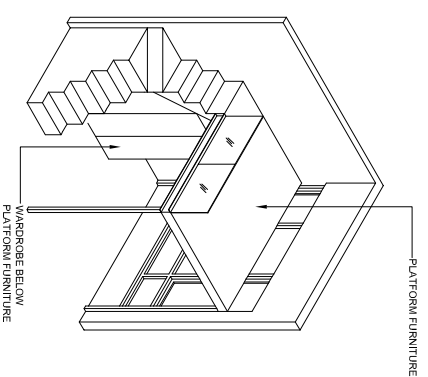


NOTE:
 + Isometric views have excluded railings drawings

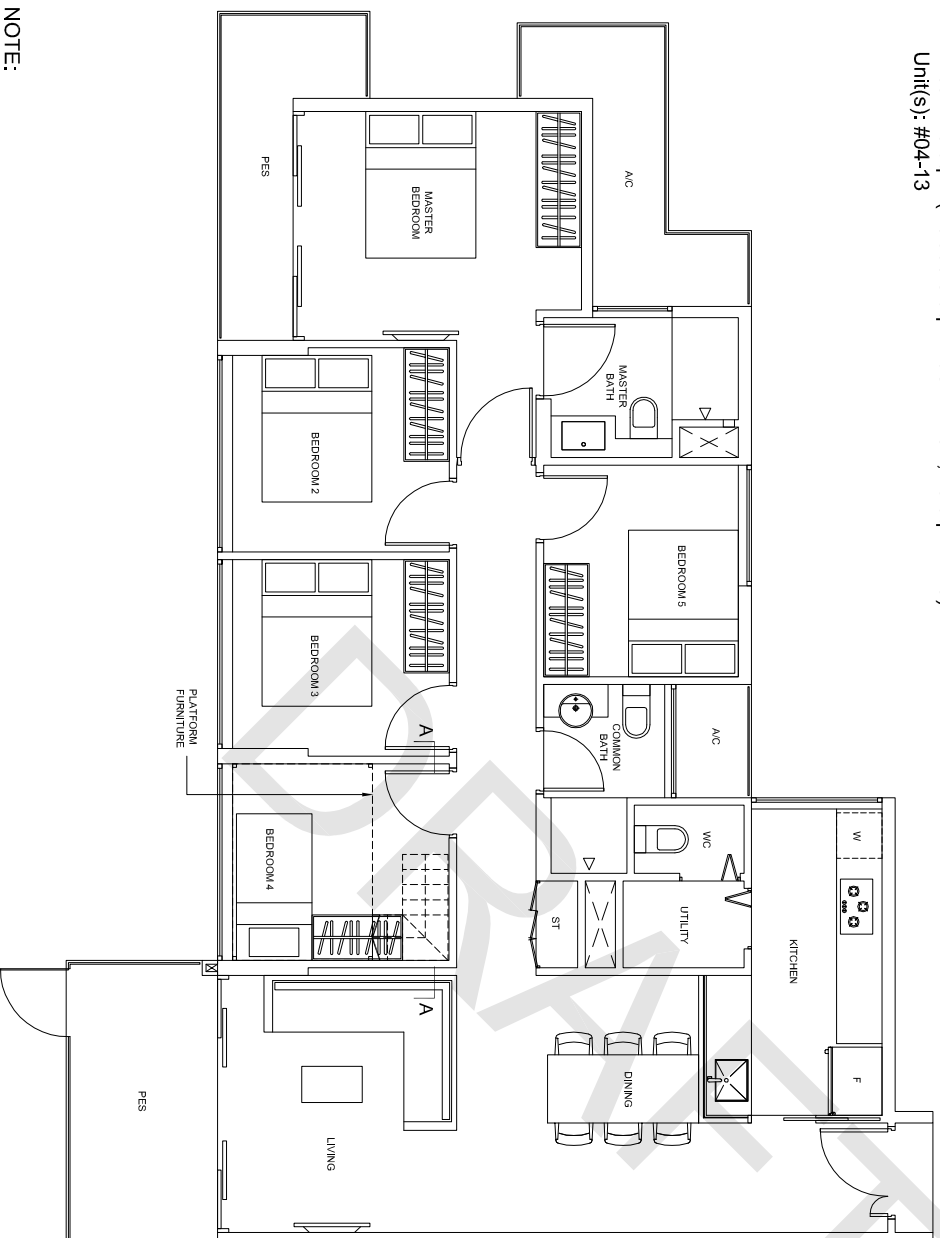
Plans are subject to change as may be required or approved by the relevant authorities. These are not drawn to scale and are for the purpose of visual presentation only. Indicated areas are estimates only and subject to final survey.

5-Bedroom

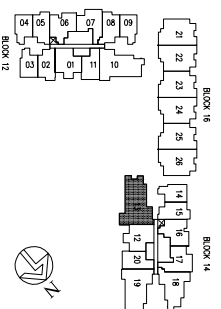
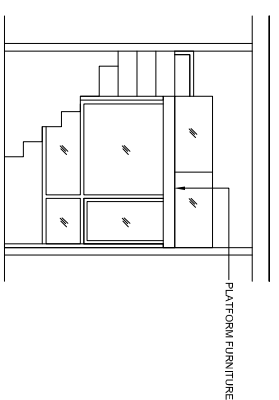
PLATFORM FURNITURE



TYPE E-G
 Area: 126 sq m (include 8 sq m A/C LEDGE, 13 sq m PES)
 Unit(s): #04-13



ISOMETRIC VIEW +



NOTE:
 + isometric views have excluded railings drawings

Plans are subject to change as may be required or approved by the relevant authorities. These are not drawn to scale and are for the purpose of visual presentation only. Indicated areas are estimates only and subject to final survey.

TYPE F-1

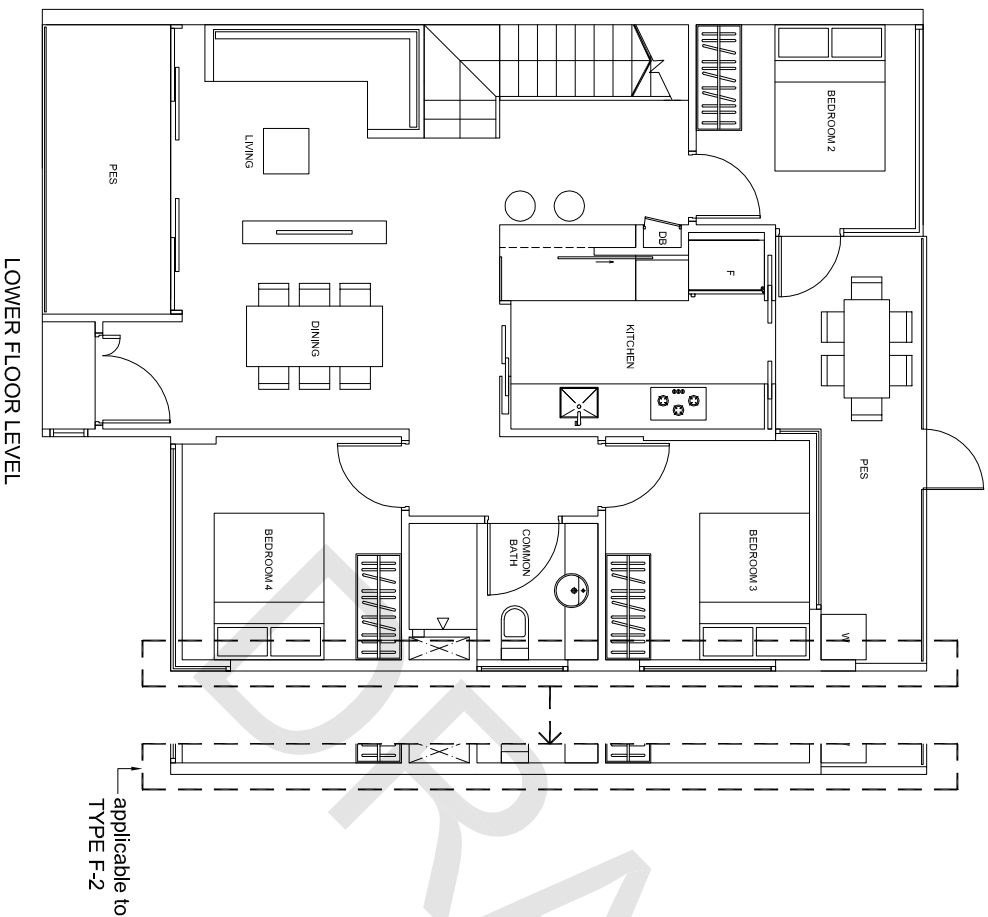
Area: 144 sq m (include 17 sq m PES, 8 sq m A/C LEDGE, exclude 31 sq m VOID)

Unit(s): #04-21*, #04-26

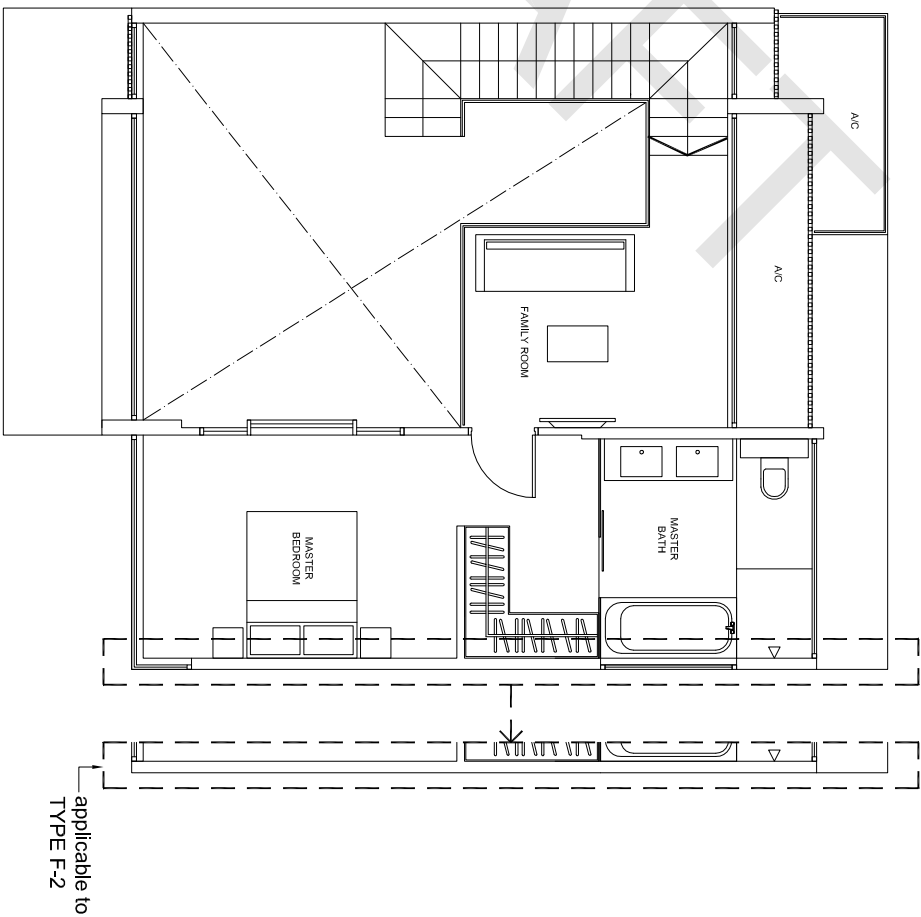
TYPE F-2

Area: 144 sq m (include 17 sq m PES, 8 sq m A/C LEDGE, exclude 31 sq m VOID)

Unit(s): #04-22, #04-23*, #04-24, #04-25*



LOWER FLOOR LEVEL



UPPER FLOOR LEVEL

NOTE:
*units in mirror image

Plans are subject to change as may be required or approved by the relevant authorities. These are not drawn to scale and are for the purpose of visual presentation only. Indicated areas are estimates only and subject to final survey.

