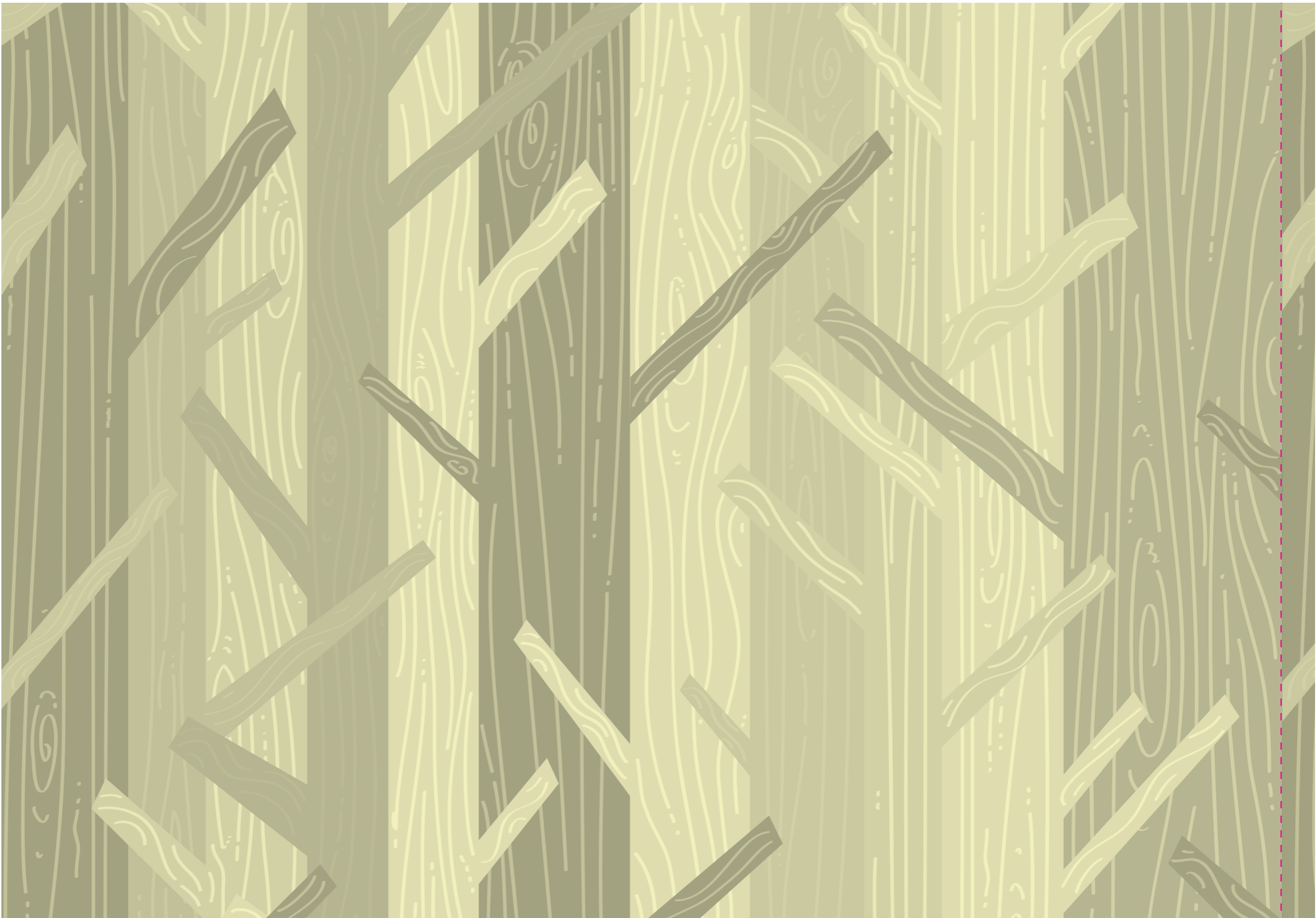




# FORESTVILLE


Picture-perfect every moment







Discover the Executive Condominium that is picture-perfect in every way!



Picture your life in perfection.  
Let it begin here.

Enter a home where picture-perfect moments await.  
Every day is filled with never-ending enchantment and discovery,  
as your home reveals its delightful secrets to you. This is your  
sanctuary amidst the trees and waters, where serenity awaits,  
and tranquillity abounds.





Artist's Impression



With so much happening all around,  
every moment can be perfect!







Schools all around



Upper Seletar Reservoir



Singapore Zoo



Woodlands Town Garden





## A world of convenience

Enjoy great connection and connectivity. Be served by the Woodlands MRT Station linking to the future Thomson Line, Woodlands Regional Bus Interchange, major roads, Seletar Expressway (SLE), Bukit Timah Expressway (BKE) and the future North-South Expressway.



JOHOR (MALAYSIA)

JOHOR BAHRU SENTRAL (PROPOSED RTS)

WOODLANDS REGIONAL HUB

Waterfront Promenade (Future)

Woodlands Waterfront

Business Cluster (Future)

Admiralty Park

WOODLANDS NORTH (FUTURE)

Woodlands Ave 9

Woodlands North Coast



SEMBAWANG

CANBERRA RESIDENCES

THE NAUTICAL

ONE CANBERRA

Yishun Ave 7

Woodlands Bus Interchange



ADMIRALTY



Future Sports Hub

Woodlands Town Garden

WOODLANDS

FORESTVILLE

MARSILING

Woodlands Ave 3

Woodlands Ave 5

Woodlands Ave 6

WOODLANDS SOUTH (FUTURE)

WOODLANDS SOUTH (FUTURE)

Woodlands Dr 16

YISHUN



Yishun Bus Interchange

WOODLANDS SOUTH (FUTURE)

KRANJI

SELETAR EXPRESSWAY (SLE)

SEMBAWANG ROAD

WOODLANDS SOUTH (FUTURE)

KHATIB



Yishun Ave 1

Nature Reserve

Sembawang Country Club

Mandai Avenue

Bottle Tree Park

To Orchard Rd & City

Mandai Rd

Mandai Rd



Singapore Zoo

To Jurong Gateway

BUKIT TIMAH EXPRESSWAY (BKE)

Turf Club Ave

Turf Club Ave

WOODLANDS SOUTH (FUTURE)

KRANJI

Woodlands Rd

Kranji Rd

CAUSEWAY

Admiralty Rd West

Woodlands Ave 10

Admiralty Rd West

Admiralty Rd East

Sembawang Rd

Canberra Link

FUTURE NORTH-SOUTH EXPRESSWAY

Woodlands Ave 12

Woodlands Ave 1

Woodlands Ave 2

Woodlands Ave 5

WOODLANDS SOUTH (FUTURE)

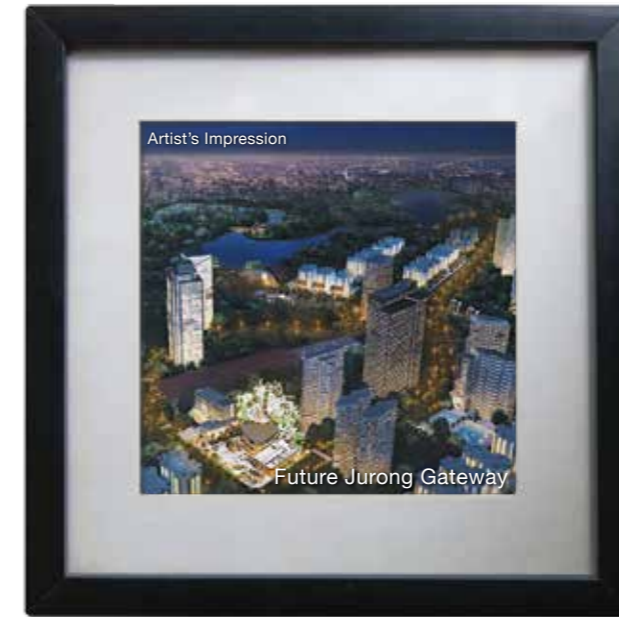
Woodlands Ave 6

FUTURE NORTH-SOUTH EXPRESSWAY

SEMBAWANG ROAD







## Connect to places of unparalleled potential

From your prime position in Woodlands, worlds of potential and progress are never far. Just across the Causeway lies Johor Bahru and Iskandar Malaysia, the international one-stop business, shopping, dining and economic zone.

From Woodlands, you also have direct access via MRT and the BKE to the future rejuvenated Jurong Lake District, the biggest lakeside destination for business and leisure in the Western Region.

Woodlands itself is set to be transformed into the new Woodlands Regional Hub – comprising the Woodlands North Coast and Woodlands Central – a bustling waterfront destination set to be the next major commercial hub of Singapore.





Business hub



North-South MRT line and the future Thomson Line



Woodlands Regional Centre



Expressways for quick island-wide access





## So much to enjoy, so close to home

Take your pick from the vast array of leisure choices that surrounds your home. Delight in the many shopping centres around you. Feast to your heart's content. Get close to nature. Indulge in more shopping, dining and leisure activities across the Causeway! The excitement never stops!

Within the Woodlands Regional Hub, the Woodlands North Coast boasts a mix of lifestyle and business offerings set amidst lush waterfront scenery. The adjoining Woodlands Central is a pedestrian friendly retail hub with a unique and vibrant street experience, conveniently linked to the MRT station and bus interchange.

Quality education is all around too. Singapore Sports School, Republic Polytechnic and the Singapore American School are just some of the educational institutions close to your home.



JOHOR (MALAYSIA)

JOHOR BAHRU SENTRAL (PROPOSED RTS)

WOODLANDS REGIONAL HUB





Bicycle



- 5 mins to Causeway Point, Woodlands Regional Library
- 10 mins to Woodlands Waterfront, Woodlands Town Garden

Car



- 9 mins to Woodlands Checkpoint
- 12 mins to Singapore Zoo, Upper Seletar Reservoir
- 20 mins to CBD (future N-S Expressway), future Jurong Lake District (BKE)

N-S MRT



- 15 mins to Nanyang Polytechnic
- 23 mins to future Jurong Lake District
- 30 mins to ION Orchard
- 37 mins to CBD
- 45 mins to Marina Bay Sands, Gardens by the Bay

Future Thomson Line MRT



- 7 mins to Republic Polytechnic, future Rapid Transit System Station to Johor Bahru, Malaysia
- 20 mins to eateries along Upper Thomson Road
- 30 mins to Raffles Town Club, Singapore Chinese Girls' School
- 35 mins to Singapore Botanic Gardens

Approximate timings.







## Everything for everyone in the family



Forestville is ideally located to cater to the needs of growing families. Woodlands offers a conducive, green environment for kids to grow up in. There are plenty of schools within a convenient radius from your home. Supermarkets, food centres and essential services are also nearby.

Family bonding has never been more fun! Go cycling on the coastal promenade of Woodlands Waterfront. Enjoy a day out at Causeway Point, Singapore's largest suburban mall. Or just hop across the Causeway for great shopping, food galore and theme park fun!







Causeway Point



Innova Junior College



Sun Plaza



Singapore Sports School



Singapore American School







With so much to explore,  
every moment is  
uniquely special!





Site Plan



Units 01 and 26 start from 3rd storey  
 Units 40, 43, 44, 45, 48, 49, 51, 52 and 55 start from 4th storey



## LEGEND:

### GROUND FLOOR PLAN

- 1 Grand Entrance
- 2 Greeting Pavilion
- 3 Entrance Feature
- 4 Bubbling Pool
- 5 Entrance Boulevard
- 6 Wine Pod
- 7 Jacuzzi
- 8 Tranquil Pool
- 9 Relaxation Lawn
- 10 Function Room
- 11 Pool Deck Lounge
- 12 50m Lap Pool
- 13 Wading Pool
- 14 Children's Water Playground
- 15 Hammock Alcove
- 16 Gym
- 17 Sun Deck
- 18 Jogging Trail
- 19 Fitness Corner
- 20 Children Playground
- 21 Party Deck
- 22 Recreation Lawn
- 23 BBQ Pavilion
- 24 Tennis Court
- 25 Driveway

### 4TH STOREY PLAN

#### Sky Garden

- 1 Cosy Cove
- 2 Lawn Rest
- 3 Line Sculpture
- 4 Vine Wall
- 5 Yoga Deck
- 6 Floral Land
- 7 Scented Walk
- 8 Bamboo Walk
- 9 Reading Corner
- 10 The Hidden Garden







Go on an aquatic adventure at the Children's Water Playground

Splash about in the Wading Pool



Keep in the pink of health at the Gym

Soak in the sun and engage in pleasant conversation at the Sun Deck

Take a stroll, or hang around the Plumeria Walk

Make your new record at the 50m Lap Pool

Frangipani Grove

Artist's Impression



Relax and chill out  
at the Hammock Alcove







Enjoy a long and leisurely swim in the 50m Lap Pool

Indulge in the relaxing Jacuzzi

Be inspired to work out at the pool-view Gym

Spend lazy afternoons at the Hammock Alcove

# Ravenala Grove

Artist's Impression



# Sky Garden

Float into serenity at the Yoga Deck

Indulge in an enjoyable tale at the Reading Corner

Have a secret rendezvous in the Hidden Garden

Artist's Impression





## The most lavish facilities ever

Enter your private sanctuary of serenity, a timeless forestscape resplendent with lush foliage and abundant in leisure facilities. It inspires you with nature, and invites you in to spend countless moments of relaxation and rejuvenation. A splendid profusion of natural elements takes you a million miles away, and charming pockets of communal facilities bring family and friends ever closer together. The comprehensive range of facilities encompasses large lap and leisure pools stretching across the landscape, a jogging trail bordering the entire development and the Wine Pod fully equipped with microwave and freezer for dining and entertaining, and accompanying jacuzzi. Thoughtful touches include convenient basement carparking.





An ocean of water features and pools stretching 200 metres across the landscape





Artist's Impression



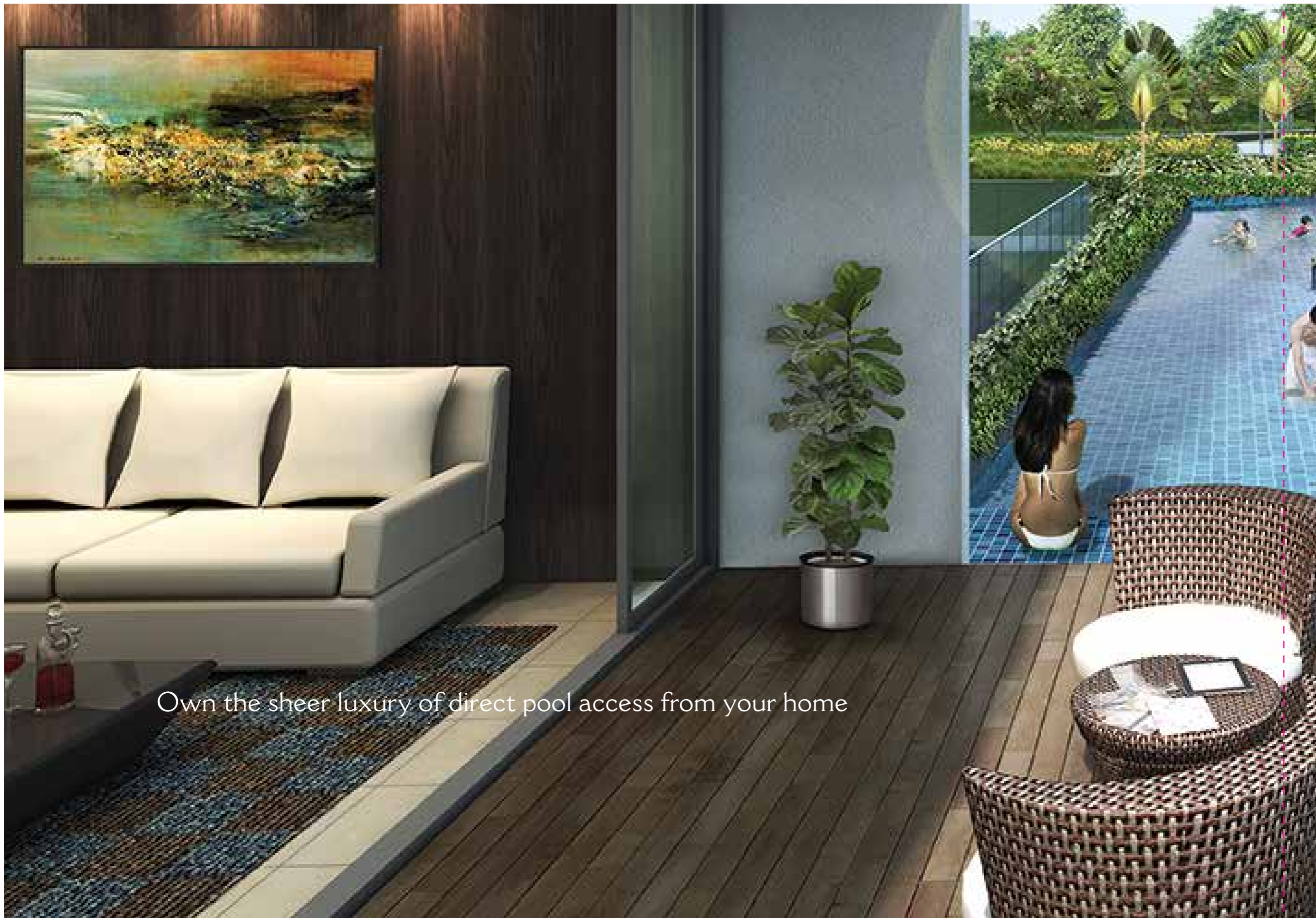




**W**hen every corner is  
so luxurious, every moment  
will be unforgettable.







Own the sheer luxury of direct pool access from your home





Artist's Impression







A home filled with luxury and beautiful moments









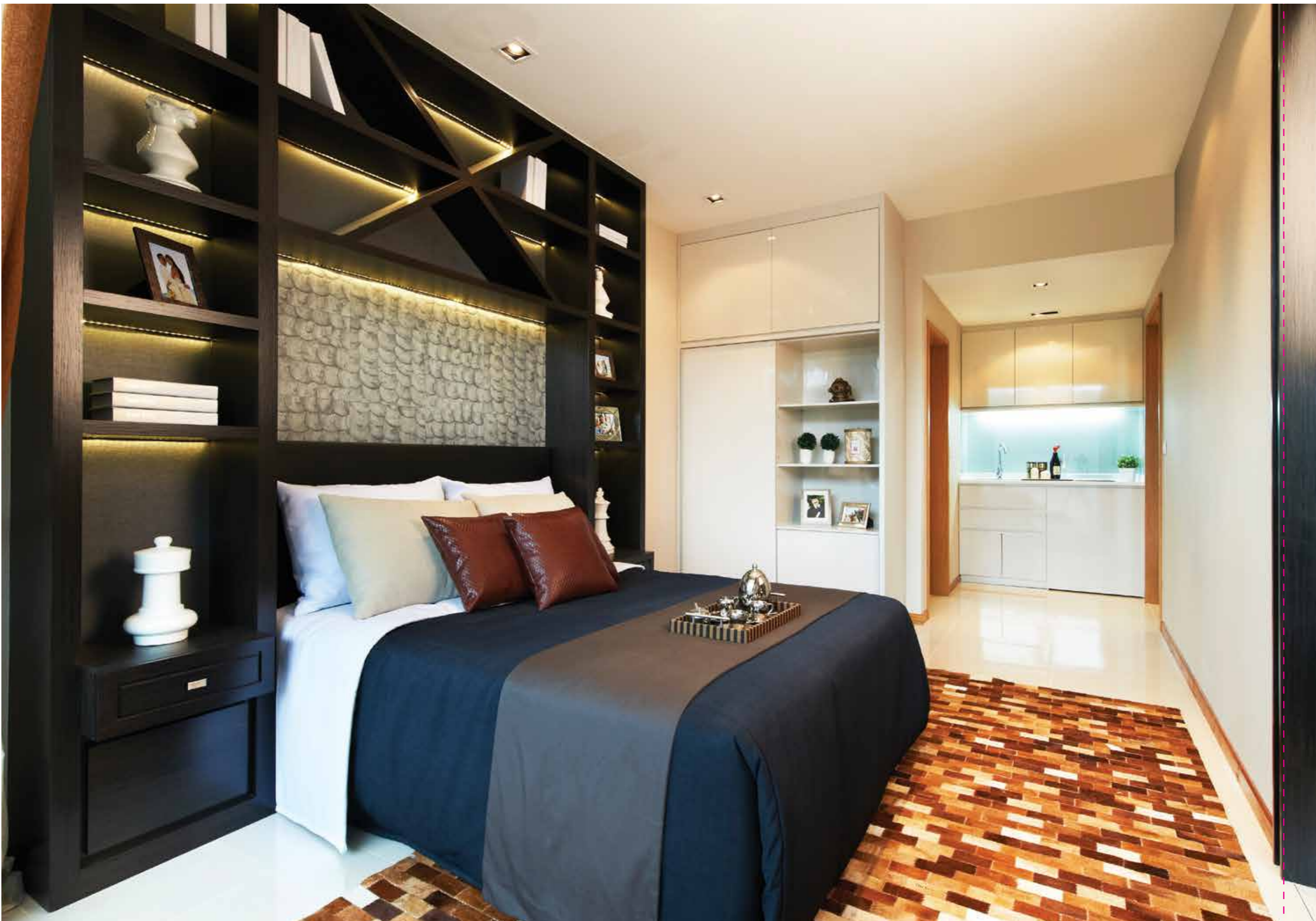


## Unique interiors for every lifestyle

Discover luxurious space and comfort. Where excellent design and the spaciousness of a well-planned layout come together to create a residence for every aspect of your life.

Multi-generation families will delight in the 3- and 4-bedroom dual-key units. Enjoy direct access to the pool or sky garden from the private enclosed spaces of your home for selected choice units. For the ultimate in luxury, choose the luxurious penthouses where generous roof terraces and spectacular views await.











Developer:



For enquiries, call 9835 0001 or log on to [www.forestville.sg](http://www.forestville.sg)

Developer: Hao Yuan Investment Pte Ltd • Company Registration No.: 201011935C • Developer's License No.: C0994 • Tenure of Land: 99 years commencing 6 August 2012 • Lot Nos./Mukim: Lot 6004X MK13 • Building Plan No.: A1952-00002-2012-BP02 dated 1 Apr 2013 • Expected Date of TOP: 6 May 2016 • Expected Date of Legal Completion: 6 May 2019

Whilst reasonable care has been taken to ensure accuracy in the preparation of information in this brochure, no warranty is given and interested parties should rely on the sale and purchase agreement. Visual representations including models, drawing, illustrations, photographs and art rendering (the "Visual Representation") portray artistic impressions only. The information contained herein, the fitting, finishes, features and other display in the show units or elsewhere (the "Materials"), which are for the general guidance only, are subjected to change and should not be relied upon as accurately describing any specific matter. Photographs, including those taken in the show units do not necessarily represent as built standard specifications. Floor areas are approximate measurements and are subjected to final survey. The Vendor reserves the right to modify features, any unit, plans, the development or any part thereof as may be approved or required by the relevant authorities. The Visual Representation and the Materials shall not constitute a warranty or representation of fact and cannot form part of an offer or contract in respect of any unit in the development. The Vendor shall not be bound by any statement, representation or promise (whether written or oral) by vendor's agent or otherwise with respect to the development and/or any unit, except as expressly set forth in the sale and purchase agreement. The sale and purchase agreement shall form the entire agreement between the vendor and purchaser and shall in no way be modified by any statement, representation or promise (whether or not contained in the visual representations, and/or the Materials and/or by the Vendor's agent or otherwise) made prior to the signing of the sale and purchase agreement.







