



週末、シヤンパンのはじめる泡とともだち、または  
 子供にみえる。

フラミンゴ・バレー

忘れているものゝもよもよもせむ時画と空画、

釋のにおい、大きな深呼吸をひとつ

忘れているたぎりとたかしの思いは、懐かしい歌詩、

自然と一体になるコンドミニアム、

そすが フラミンゴ・バレー

澄み切った空にひろがる空気が、

清天に輝く星、

光や太陽、そして雲や雨や雪も、

風のはなやまが、木止のびちちちが...

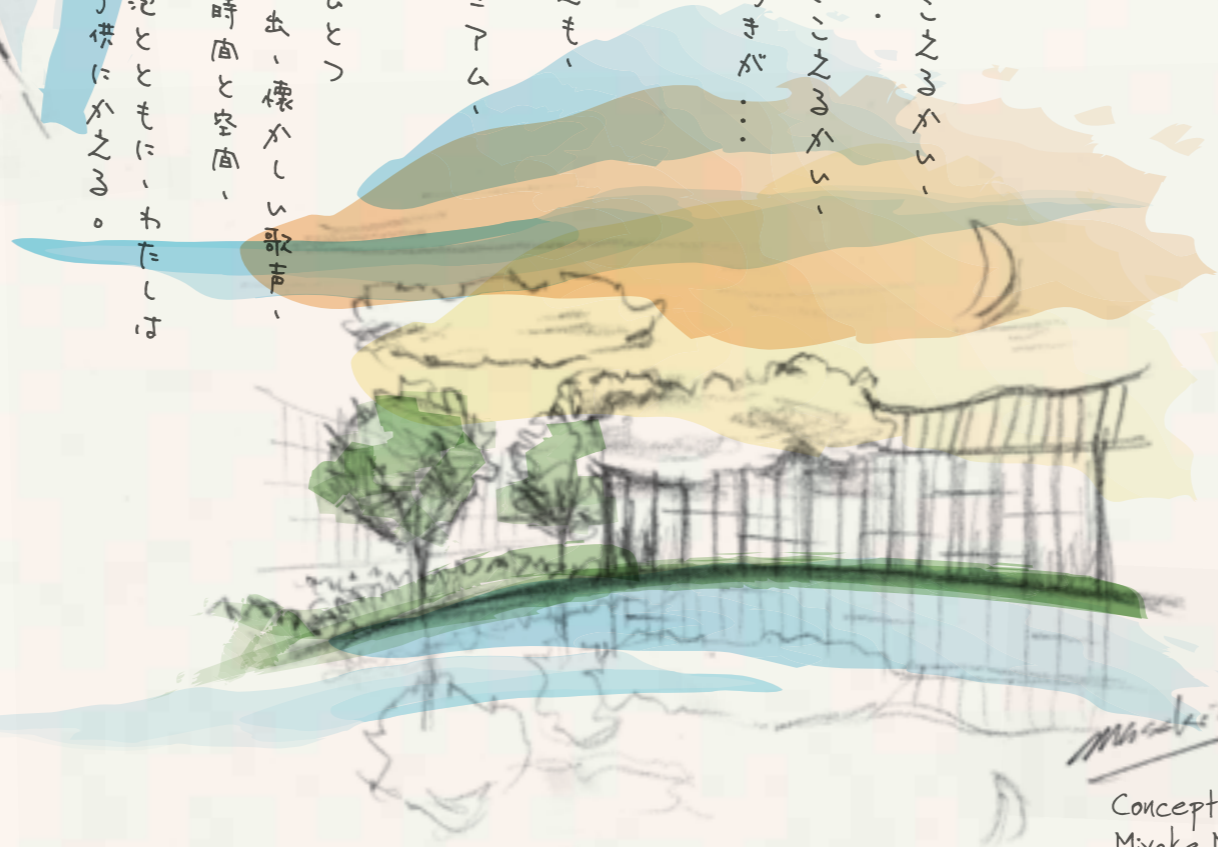
耳をすましてごらん、君にはまことささるかい、

耳をすましてごらん、君にはまことささるかい、

鳥の音が、そーて水の音が...

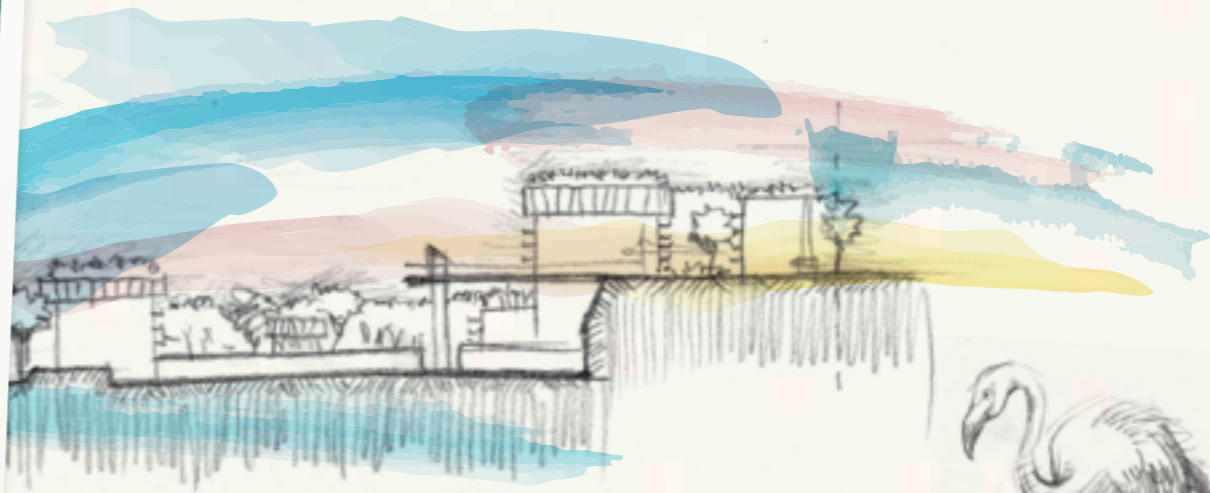
Where above you is only open skies  
 Where the light hugs the trees  
 Where the breeze brings the sea  
 Where naturally, you're at ease  
 That's where your heart longs

Somewhere memories are waiting  
 Someplace called Flamingo Valley  
 Sometimes all it takes is  
 Someone you love (by your side) and  
 Somehow nature will also oblige.



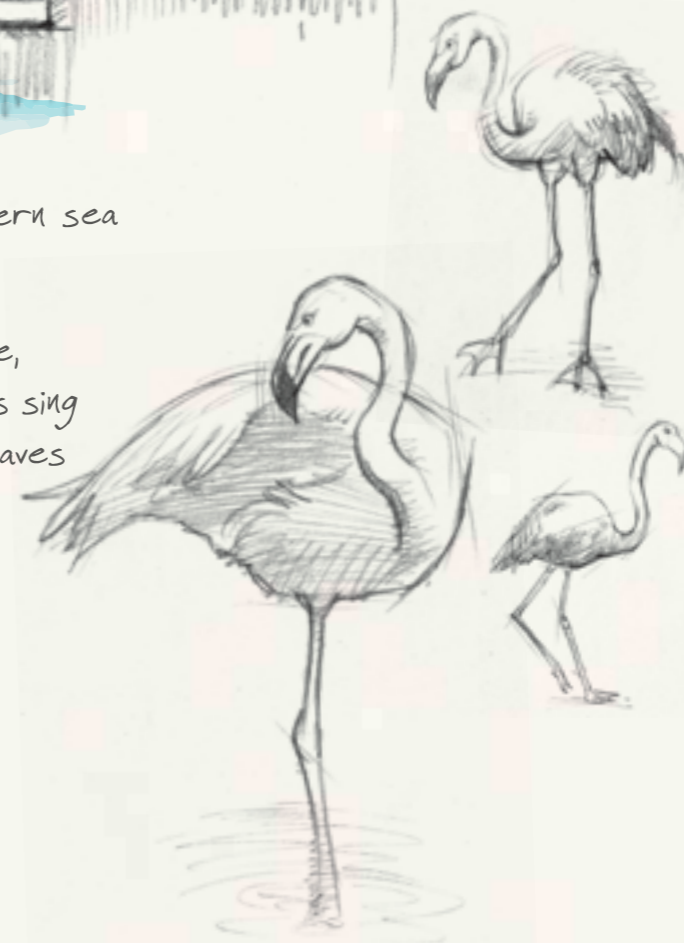
Masaki Miyake WAA

Concept Architect for Flamingo Valley,  
 Miyake Masaki Associates



Nestled in a special place, somewhere between the sparkling eastern sea and fields of quiet green, lies a sanctuary of blissful tranquility.

Quite unlike anywhere else in Singapore. A freehold resort paradise, tucked in a coveted neighbourhood in Siglap. This is where the birds sing above the cascading waters. And where the trees rustle their leaves to the passing winds. This is home to the exceptional, the natural and all you truly yearn for.





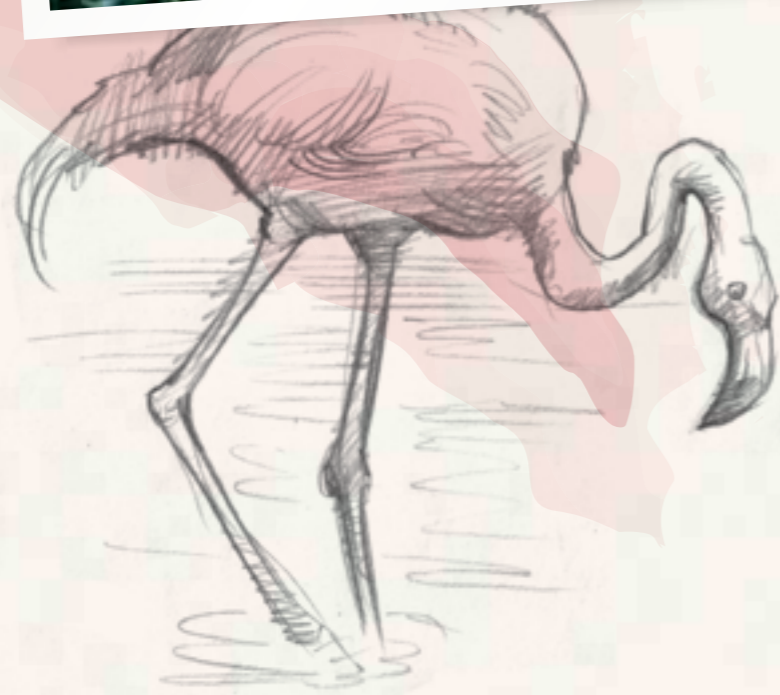
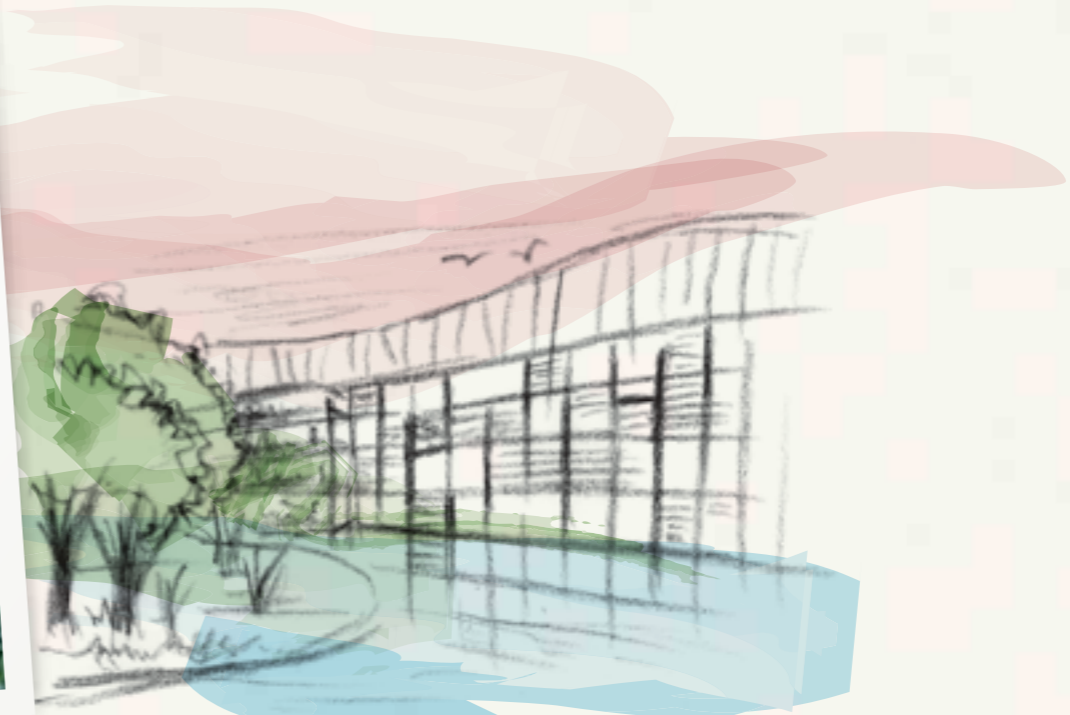


Leave the bustle of the city behind and enter a haven of complete harmony. Between the contemporary and the natural. Once inside, you'll receive a welcome of sheer exhilaration. A majestic Skybridge towering 11m high.

Beyond bringing you visual pleasure, it links the outside to the extraordinary on the inside. Step into the futuristic glass lift and find yourself at the magical gateway of The Rainforest Valley. Here, the awe-inspiring 11m cascading waterfall causes a cool mist to envelope you with peace and calm. And up ahead, Lounge Gazebos seem to beckon to you from above the pond. Immediately a sense of ease sets in and you know you're finally home.







Looking across Flamingo Valley, the feeling of spaciousness is more than just perceived with a site extending approximately 335,000 sq ft.

From the generous layout of each unit, to the large areas accorded to the many leisure amenities, space is part of your every day.

Even the facade with its sleek glass panels, seemingly blurs the line between modernity and nature, giving you a greater sense of freedom.

In the midst, you'll find the spectacular 50m Lap Pool overflowing into the impressive Spa Pool – like the perfect oasis at the centre of lushness.





With an astonishing array of amenities to please even the most discerning, staying home has never been more exciting. Along with the many beautiful pools, the Spa Alcove offers an effortlessly chic retreat for your senses. The well-equipped kitchen makes it easy to dine al fresco. And whether it's social or leisure pursuits, the Function Room expands the way you live perfectly with its different rooms and spaces.

Or maybe you're thinking of hosting private occasions or an intimate dinner under the stars, there's always a place for a privileged lifestyle.









The landscape at Flamingo Valley plays an integral role in creating a wondrous new world. From the tall forest trees that greet you, to the themed gardenscapes and water features around the development, nature does more than beautify. It revitalises and engages all your senses, so that rejuvenation begins the moment you come home. Let the most exotic in the Fern Trail amaze you, or delight in the abundant flowers inside the Butterfly Trail. Reconnecting with nature is as simple as stepping outside your door.

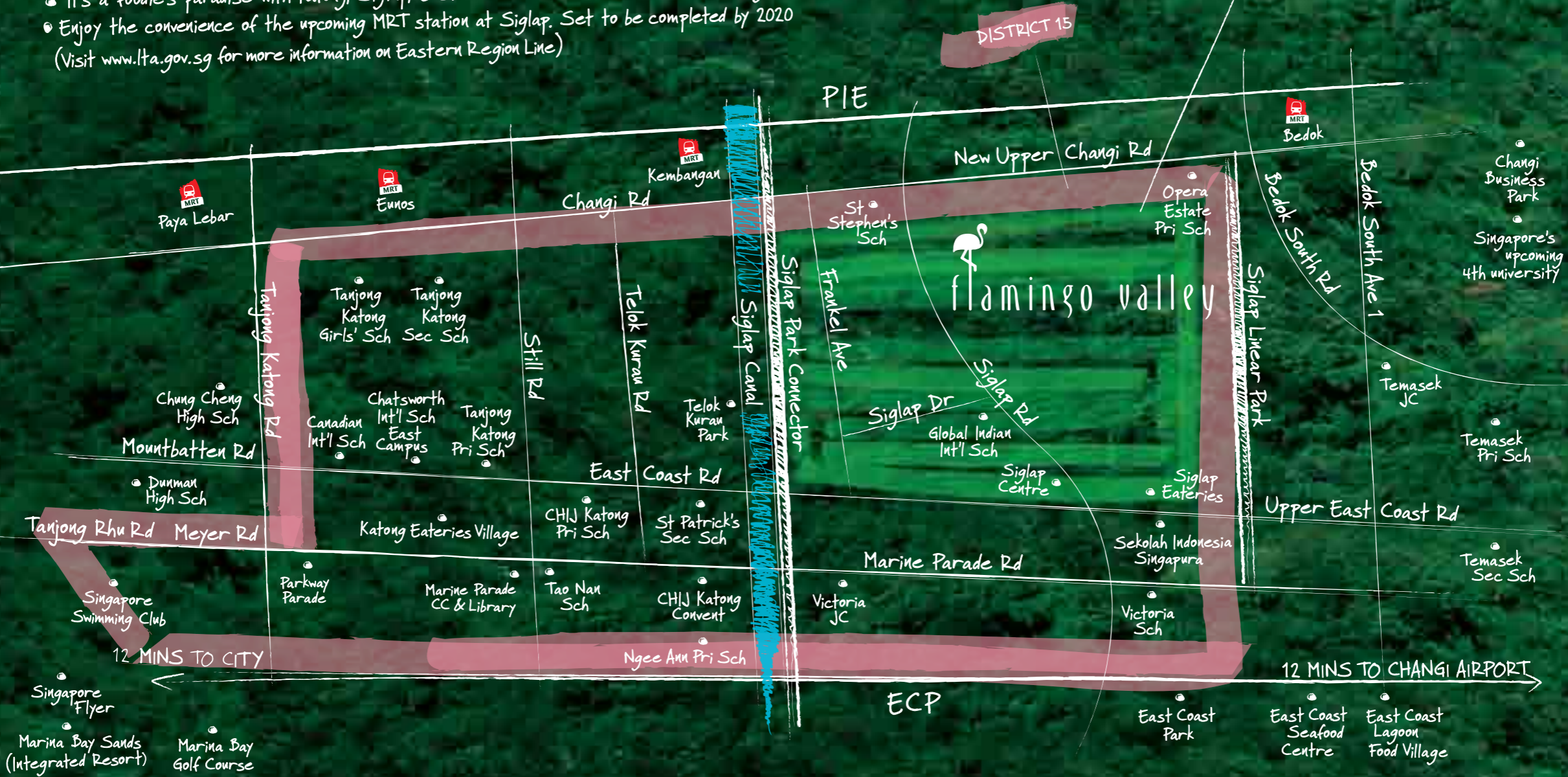




Situated in the heart of Siglap, Flamingo Valley is enviably surrounded by private housing estates. Besides being a magnet for food lovers and recreation seekers, Siglap has traditionally been a much sought-after address inside the highly desirable District 15. And with chic new additions to the neighbourhood, Siglap is set to become a trendy suburban seaside enclave.

- Only 12 minutes to the city
  - Changi Airport is just 12 minutes away
  - Close to renowned schools like Tao Nan School, CHJ Katong Primary and Convent, Victoria and Temasek Junior Colleges
  - Minutes away from Siglap Centre and Parkway Parade
  - Soak up the sun at the nearby East Coast beach
  - It's a foodie's paradise with Katong, Siglap, East Coast Seafood Centre and Food Village close by
  - Enjoy the convenience of the upcoming MRT station at Siglap. Set to be completed by 2020
- (Visit [www.lta.gov.sg](http://www.lta.gov.sg) for more information on Eastern Region Line)

A coveted address amidst the bungalows and private houses of Siglap, Frankel and Opera Estate.





flamingo valley

jewel of the east

# SITE PLAN

## LEGEND

- A** Rainforest Court
- B** Skybridge with Glass Lift
- C** The Rainforest Valley comprising of:  
11m Cascading Water Wall  
Biological Pond  
3 Lounge Gazebos
- D** The Spa Sanctuary
- E** 50m Lap Pool
- F** Sunbathing Deck
- G** Fitness Agora comprising of:  
Gymnasium  
Changing Facilities with  
Steam Bath
- H** Entertainment  
Alfresco Dining Pavilion  
& Spa Alcove
- I** Function Room with  
Gaming Hot Spot  
& Karaoke Room
- J** Dining Patio
- K** Barbeque Patio
- L** Children's Play Zone
- M** Children's Splash Pool
- N** Tennis Court
- O** Jogging Trail
- P** Fitness Valley with Outdoor Gym
- Q** Yoga & Tai Chi Court
- R** Meditation Garden
- S** Hammock Court
- T** Zen Garden
- U** Fern Trail
- V** Fragrant Trail
- W** Butterfly Trail
- X** Fitness Station
- Y** Guardhouse



# UNIT DISTRIBUTION

## UPPER DECK

460 SIGLAP RD	UNIT	01	02	03	04	05	06	07	08	09	10	11	12
	STOREY												
	ATTIC												
5	B1	PH6a	PH13	PH13a	PH1	B1	PH13a	PH13	PH6a	B1	PH13a	PH13	
4	B1	C2	C5(T)	C5a(T)	B1	B1	C5a(T)	C5(T)	C2	B1	C5a(T)	C5(T)	
3	B1	C2	C5	C5a	B1	B1	C5a	C5	C2	B1	C5a	C5	
2	B1	C2	C5	C5a	B1	B1	C5a	C5	C2	B1	C5a	C5	
1	B1	C2	C5	C5a	B1	B1	C5a	C5	C2	B1	C5a	C5	

468 SIGLAP RD	UNIT	19	20	21	22	23	24	25	26	27
	STOREY									
5	PH9	D1(T)	PH10	PH11	D1(T)	PH10	PH11	D1(T)	PH9	
4	C8	D1	C8a	C8a	D1	C8a	C8a	D1	C8	
3	C8	D1	C8a	C8a	D1	C8a	C8a	D1	C8	
2	C8	D1	C8a	C8a	D1	C8a	C8a	D1	C8	
1	C8-P1	D1-P1	C8-P2	C8-P2	D1-P1	C8-P2	C8-P2	D1-P1	C8-P1	

470 SIGLAP RD	UNIT	28	29	30	31	32	33	34	35	36	37	38	39
	STOREY												
	ATTIC												
5	C1(T)	B2(T)	PH8	PH15	BL1	PH14	PH14	BL1	PH15	PH8	B2(T)	C1(T)	
4	C1	B2	C4(T)	D2(T)	A1	C1c(T)	C1c(T)	A1	D2(T)	C4(T)	B2	C1	
3	C1	B2	C4	D2	A1	C1c	C1c	A1	D2	C4	B2	C1	
2	C1	B2	C4	D2	A1	C1c	C1c	A1	D2	C4	B2	C1	
1	C1-P7	B2-P1	C4	D2	A1	C1c	C1c	A1	D2	C4	B2-P1	C1-P7	

## LOWER DECK

462 SIGLAP RD	UNIT	13	14
	STOREY		
3	B4	B4	
2	B4	B4	
1	B4-P1	B4-P1	

464 SIGLAP RD	UNIT	15	16
	STOREY		
3	B4	B4	
2	B4	B4	
1	B4-P1	B4-P1	

466 SIGLAP RD	UNIT	17	18
	STOREY		
3	B4	C6a(T)	
2	B4	C6a	
1	B4-P1	C6-P2	

472 SIGLAP RD	UNIT	40	41	42	43
	STOREY				
3	PH18 (#03-40)	PH18 (#03-41)	PH18 (#03-42)	PH18 (#03-43)	
2	C7	C6	C6	C7	
1	C7-P1	C6-P1	C6-P1	C7-P1	

476 SIGLAP RD	UNIT	45	46	47	48	49	50	51	52	53	54	55	56	57	58
	STOREY														
	ATTIC														
5	BS1a(T)	D3(T)	PH5	PH16	BS1(T)	A1	BS1a(T)	PH16	PH16a	C1a(T)	A1	BS1a(T)	PH16	PH17	
4	BS1a	D3	BS1b(T)	E1(T)	BS1	A1	BS1a	E1(T)	E1a(T)	C1a	A1	BS1a	E1(T)	E2(T)	
3	BS1a	D3	BS1b	E1	BS1	A1	BS1a	E1	E1a	C1a	A1	BS1a	E1	E2	
2	BS1a	D3	BS1b	E1	BS1	A1	BS1a	E1	E1a	C1a	A1	BS1a	E1	E2	
1	BS1-P2	D3-P1	BS1-P3	E1-P1	BS1-P1	A1-P3	BS1-P2	E1-P1	E1-P2	C1-P8	A1-P3	BS1-P2	E1-P1	E2-P1	

478 SIGLAP RD	UNIT	59	60	61	62	63	64	65	66	67	68	69	70	71	72
	STOREY														
	ATTIC														
5	PH16	PH14	PH14a	A1	PH3	PH16a	PH16	PH2	PH6	PH17	PH16	PH3	A1	PH14a	
4	E1(T)	C1(T)	C1(T)	A1	B1a	E1a(T)	E1(T)	B1a	C1(T)	E2(T)	E1(T)	B1a	A1	C1(T)	
3	E1	C1	C1	A1	B1a	E1a	E1	B1a	C1	E2	E1	B1a	A1	C1	
2	E1	C1	C1	A1	B1a	E1a	E1	B1a	C1	E2	E1	B1a	A1	C1	
1	E1-P1	C1-P6	C1-P3	A1-P1	B1a-P2	E1-P2	E1-P2	B1a-P1	C1-P1	E2-P1	E1-P1	B1a-P3	A1-P1	C1-P2	

480 SIGLAP RD	UNIT	73	74	75	76	77	78	79	80	81	82	83	84
	STOREY												
	ATTIC												
5	PH16a	BL1	B1a(T)	PH12	A1	PH6	PH6	PH4	PH7	PH15	BL1	PH16a	
4	E1a(T)	A1	B1a	D2(T)	A1	C1b(T)	C1b(T)	B3	C3(T)	D2(T)	A1	E1a(T)	
3	E1a	A1	B1a	D2	A1	C1b	C1b	B3	C3	D2	A1	E1a	
2	E1a	A1	B1a	D2	A1	C1b	C1b	B3	C3	D2	A1	E1a	
1	E1-P2	A1-P4	B1a-P4	D2-P2	A1-P2	C1-P5	C1-P4	B3	C3-P1	D2-P1	A1-P3	E1-P2	

- A 1 BEDROOM + STUDY
- B 2 BEDROOM
- BS 2 BEDROOM + STUDY
- BL 2 BEDROOM LOFT
- C 3 BEDROOM
- D DUAL KEY
- E 4 BEDROOM
- PH PENTHOUSE