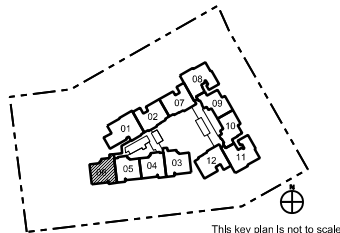
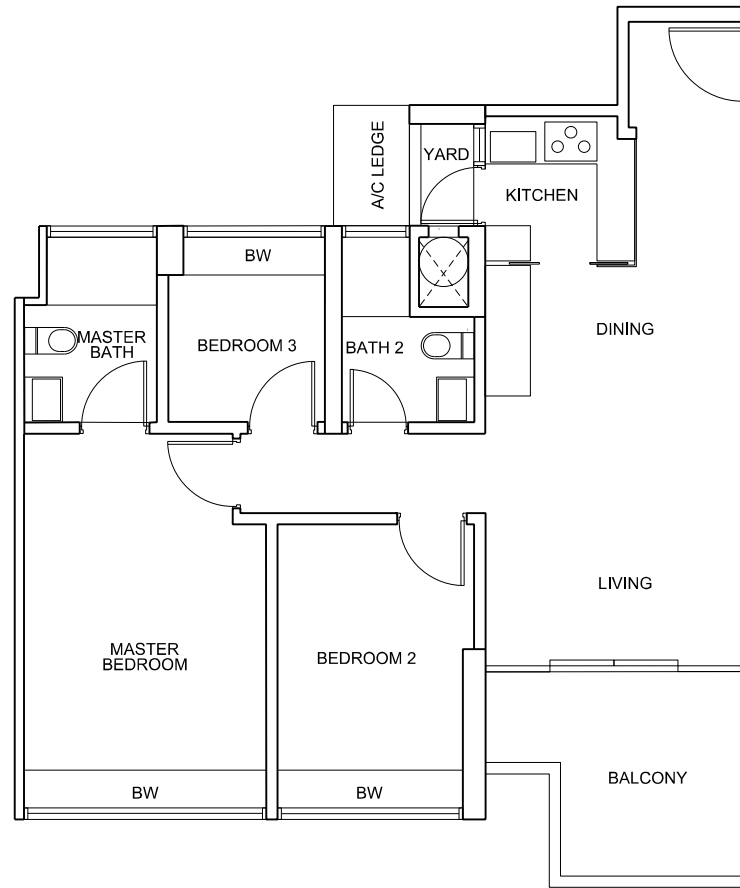


# CENTRO RESIDENCES



SCALE 1:100



## UNIT TYPE C4c(b)

#34-06

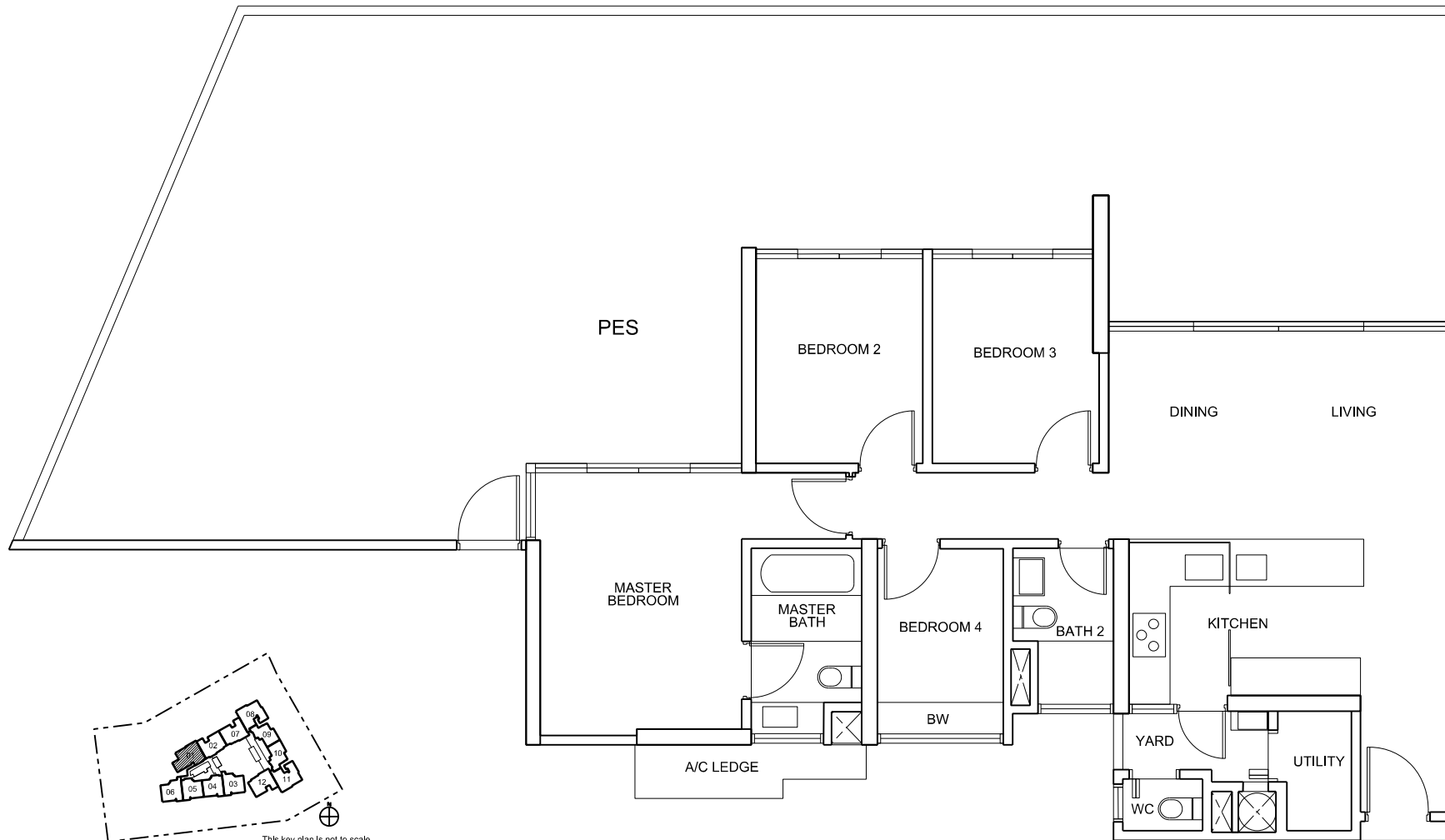
The above plans are subject to change as may be approved by the relevant authorities.

BCA BP Plan No.: A1608-00002-2008

Approved Date:

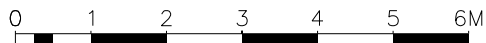
BP01 - 16 December 2008  
BP02 - 10 July 2009  
BP03 - 06 August 2009  
BP04 - 21 November 2011  
BP05 - 23 March 2012

# CENTRO RESIDENCES



This key plan is not to scale

SCALE 1:100



## UNIT TYPE D1c(p)

# 07- 01

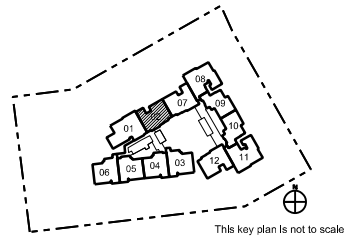
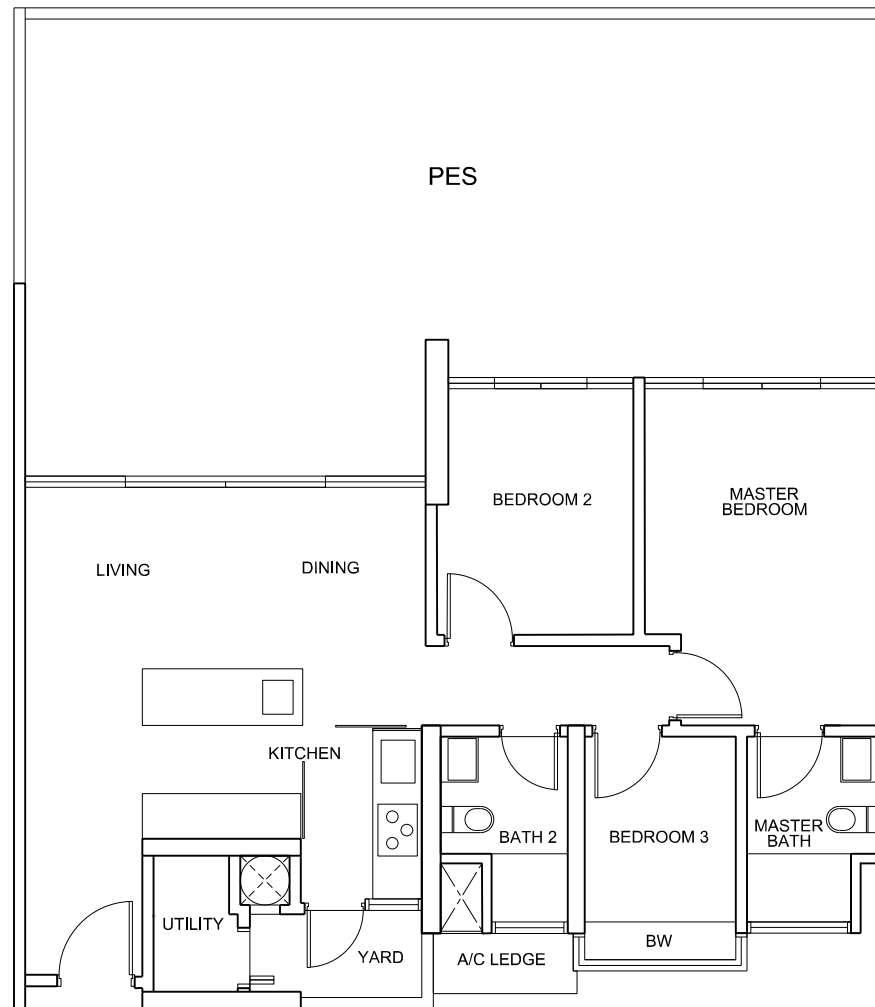
The above plans are subject to change as may be approved by the relevant authorities.

BCA BP Plan No.: A1608-00002-2008

Approved Date:

BP01 - 16 December 2008  
BP02 - 10 July 2009  
BP03 - 06 August 2009  
BP04 - 21 November 2011  
BP05 - 23 March 2012

# CENTRO RESIDENCES



This key plan is not to scale

SCALE 1:100



## UNIT TYPE C2c(p)

#07-02

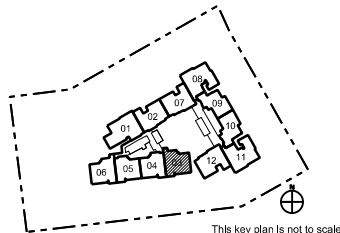
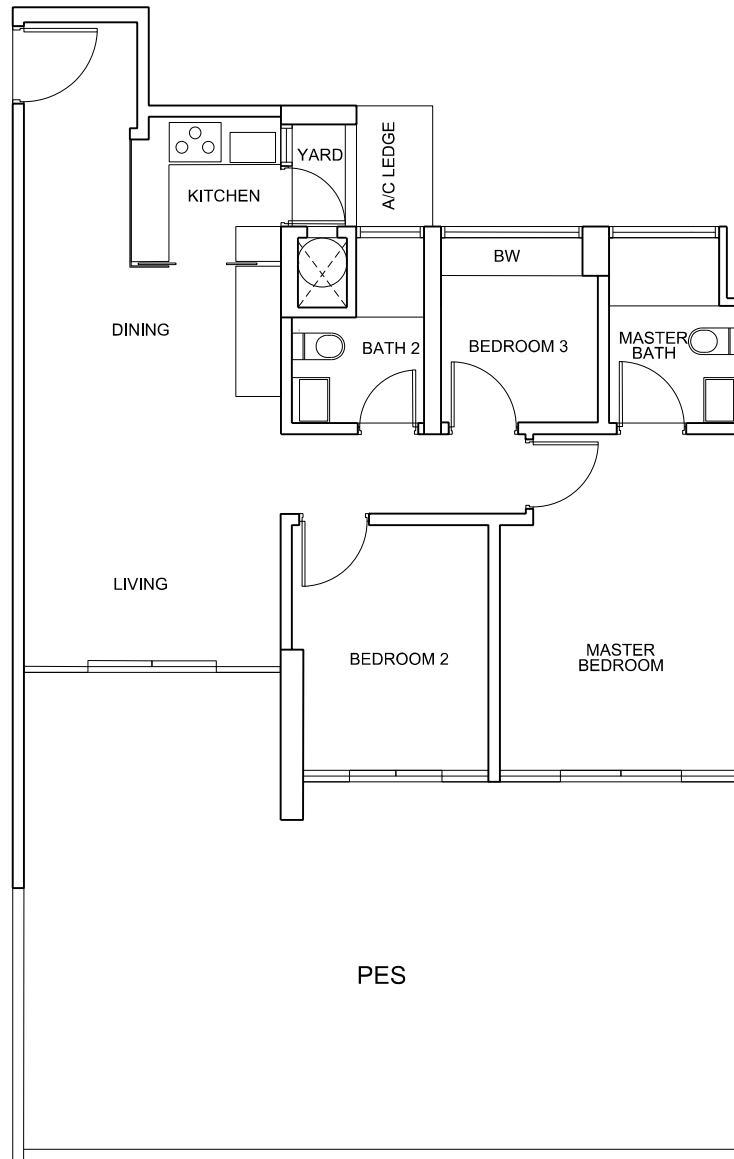
The above plans are subject to change as may be approved by the relevant authorities.

BCA BP Plan No.: A1608-00002-2008

Approved Date:

BP01 - 16 December 2008  
BP02 - 10 July 2009  
BP03 - 06 August 2009  
BP04 - 21 November 2011  
BP05 - 23 March 2012

# CENTRO RESIDENCES



This key plan is not to scale

SCALE 1:100



## UNIT TYPE C4c(p)

#07-03

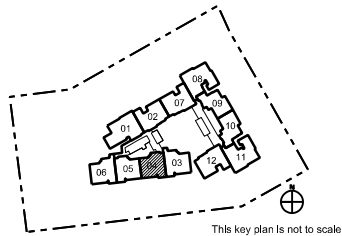
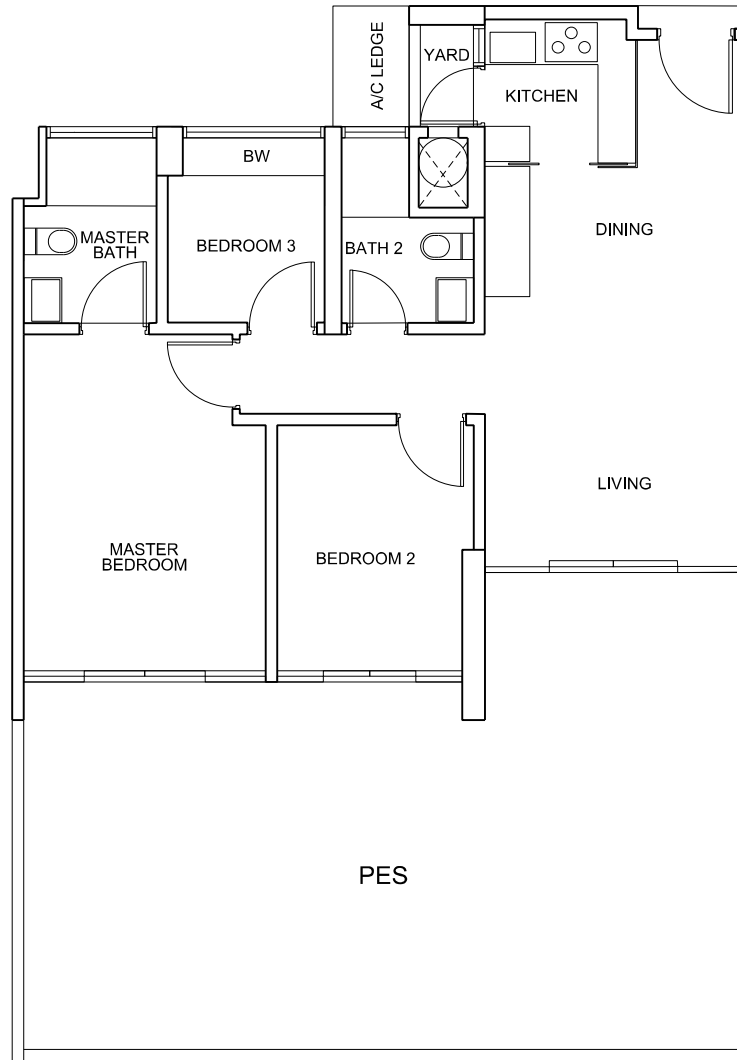
The above plans are subject to change as may be approved by the relevant authorities.

BCA BP Plan No.: A1608-00002-2008

Approved Date:

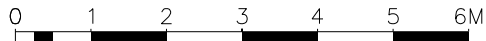
BP01 - 16 December 2008  
BP02 - 10 July 2009  
BP03 - 06 August 2009  
BP04 - 21 November 2011  
BP05 - 23 March 2012

# CENTRO RESIDENCES



This key plan is not to scale

SCALE 1:100



## UNIT TYPE C3c(p)

#07-04

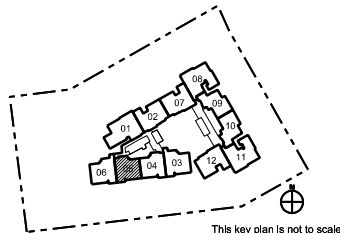
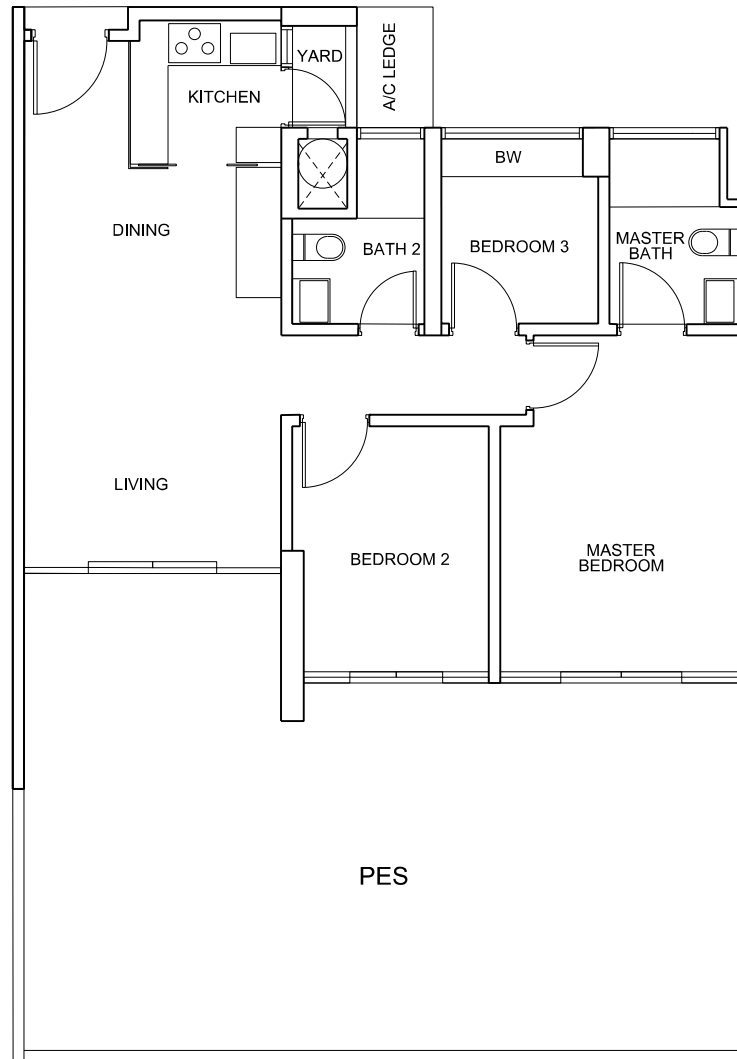
The above plans are subject to change as may be approved by the relevant authorities.

BCA BP Plan No.: A1608-00002-2008

Approved Date:

BP01 - 16 December 2008  
BP02 - 10 July 2009  
BP03 - 06 August 2009  
BP04 - 21 November 2011  
BP05 - 23 March 2012

# CENTRO RESIDENCES



This key plan is not to scale

SCALE 1:100



## UNIT TYPE C3c(p)

#07-05

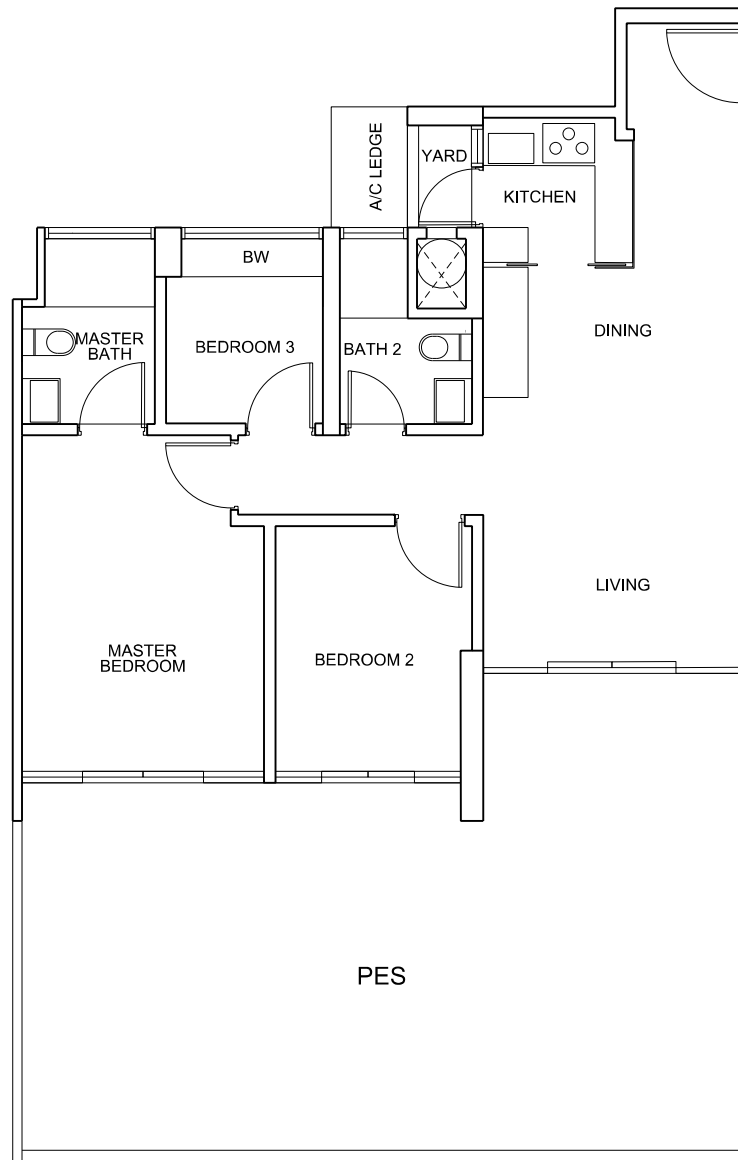
The above plans are subject to change as may be approved by the relevant authorities.

BCA BP Plan No.: A1608-00002-2008

Approved Date:

BP01 - 16 December 2008  
BP02 - 10 July 2009  
BP03 - 06 August 2009  
BP04 - 21 November 2011  
BP05 - 23 March 2012

# CENTRO RESIDENCES



This key plan is not to scale

SCALE 1:100



## UNIT TYPE C4c(p)

#07-06

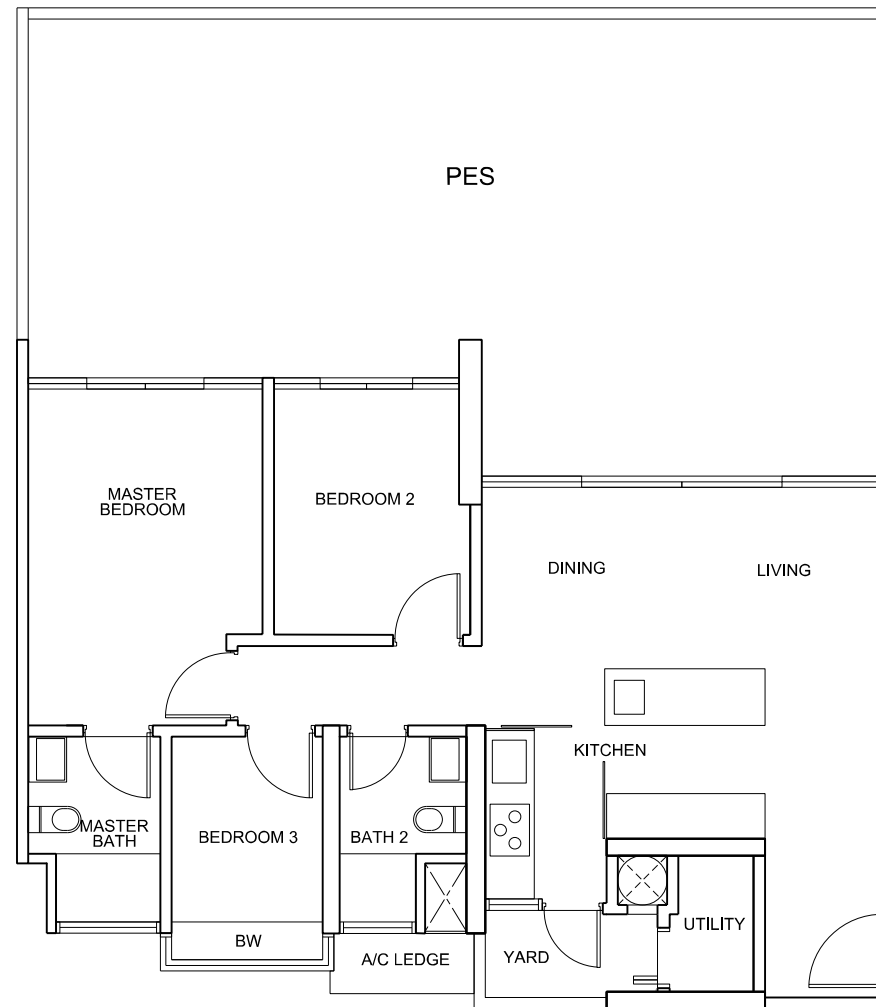
The above plans are subject to change as may be approved by the relevant authorities.

BCA BP Plan No.: A1608-00002-2008

Approved Date:

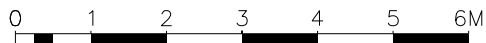
BP01 - 16 December 2008  
BP02 - 10 July 2009  
BP03 - 06 August 2009  
BP04 - 21 November 2011  
BP05 - 23 March 2012

# CENTRO RESIDENCES



This key plan is not to scale

SCALE 1:100



## UNIT TYPE C1c(p)

#07-07

The above plans are subject to change as may be approved by the relevant authorities.

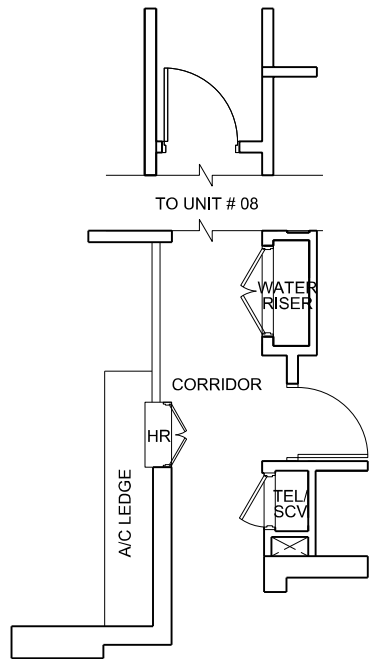
BCA BP Plan No.: A1608-00002-2008

Approved Date:

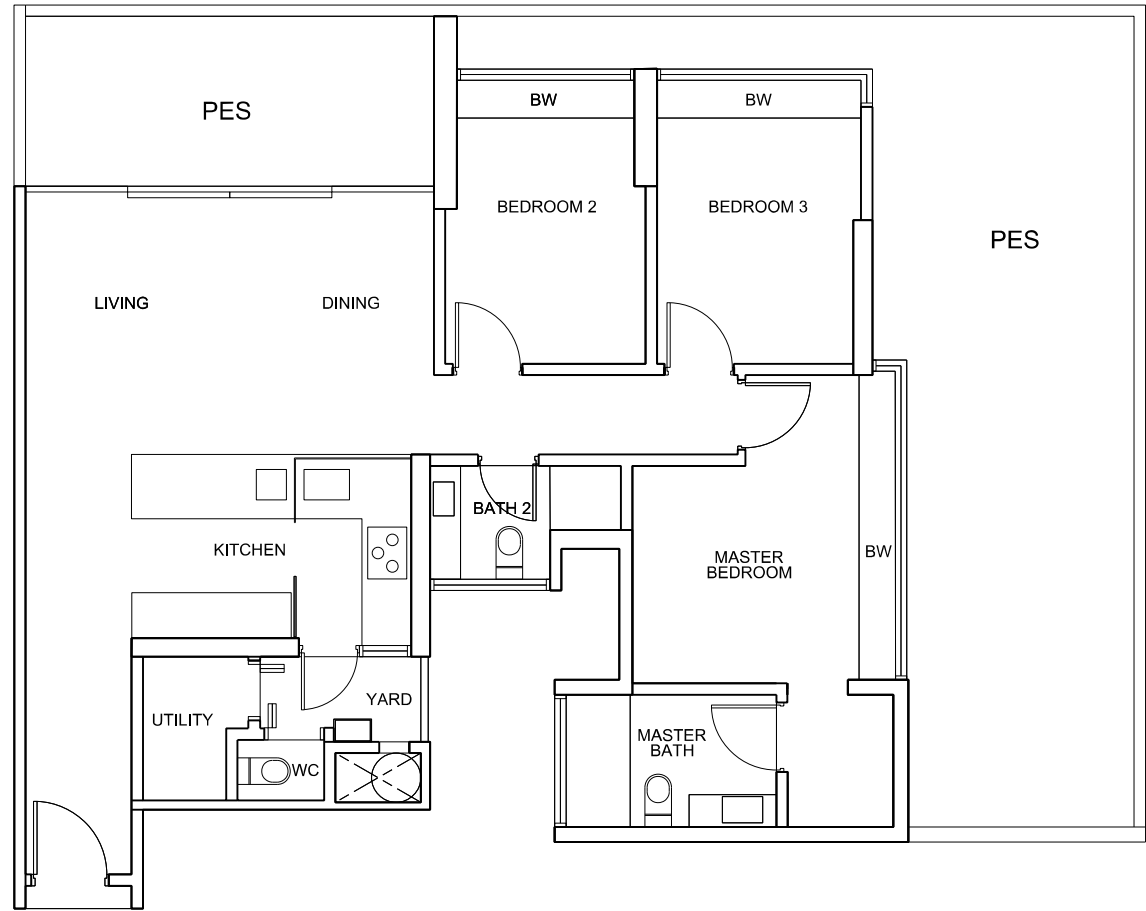
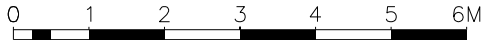
BP01 - 16 December 2008  
BP02 - 10 July 2009  
BP03 - 06 August 2009  
BP04 - 21 November 2011  
BP05 - 23 March 2012



# CENTRO RESIDENCES



SCALE 1:100



## UNIT TYPE C5(p)

#07-08

\*Accessory lot is provided for A/C Ledge.

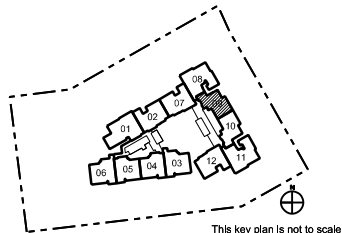
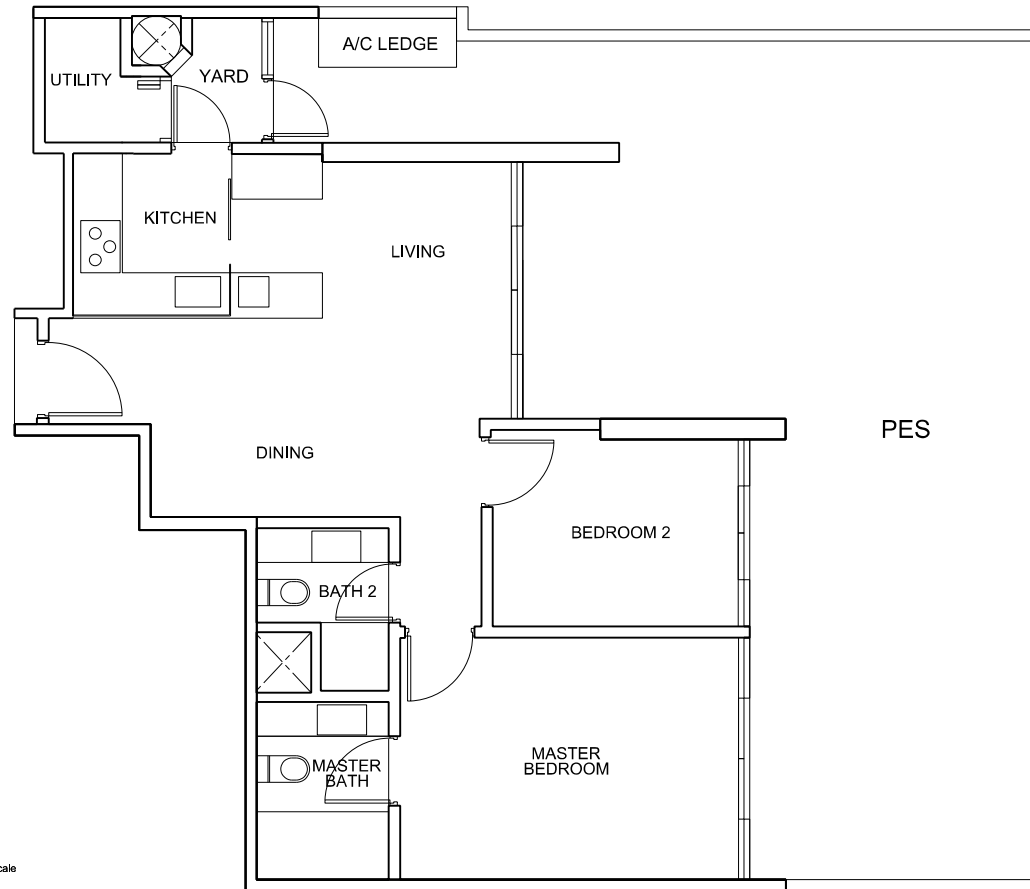
The above plans are subject to change as may be approved by the relevant authorities.

BCA BP Plan No.: A1608-00002-2008

Approved Date:

BP01 - 16 December 2008  
 BP02 - 10 July 2009  
 BP03 - 06 August 2009  
 BP04 - 21 November 2011  
 BP05 - 23 March 2012

# CENTRO RESIDENCES



This key plan is not to scale

SCALE 1:100



## UNIT TYPE B6(p)

#07-09

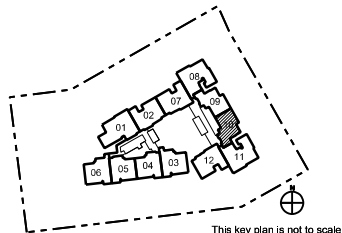
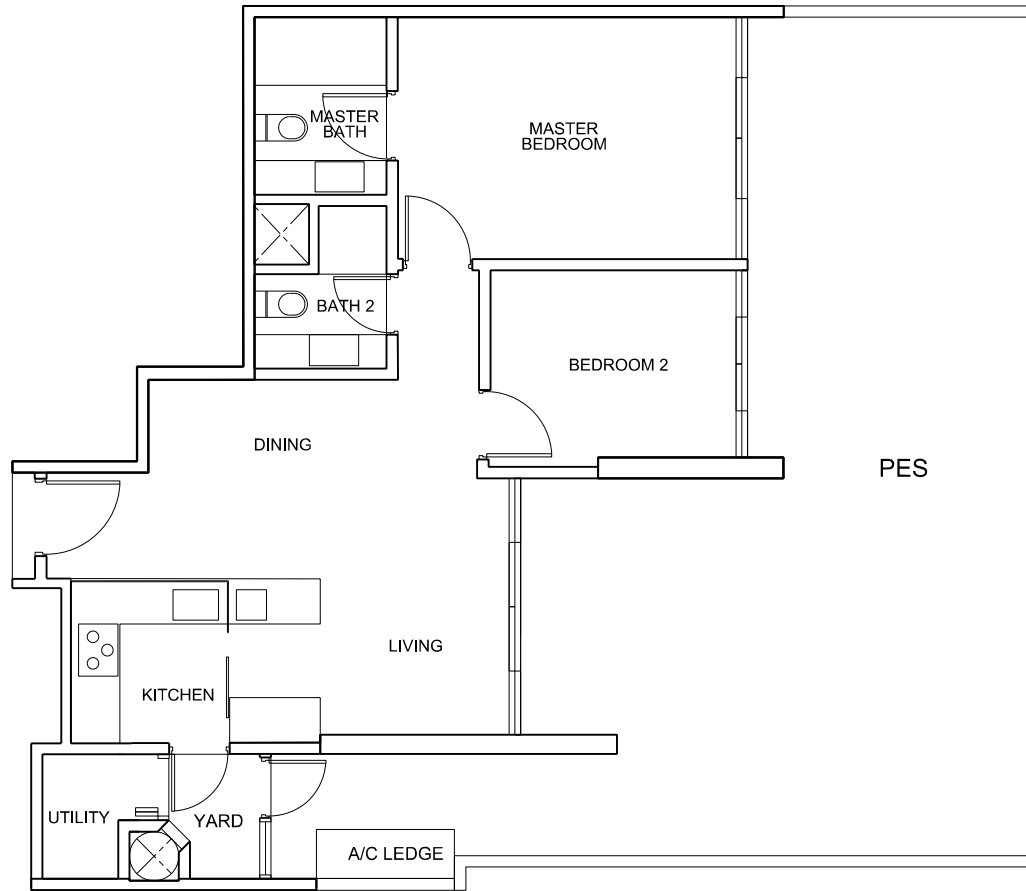
The above plans are subject to change as may be approved by the relevant authorities.

BCA BP Plan No.: A1608-00002-2008

Approved Date:

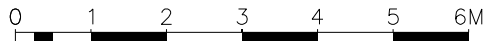
BP01 - 16 December 2008  
BP02 - 10 July 2009  
BP03 - 06 August 2009  
BP04 - 21 November 2011  
BP05 - 23 March 2012

# CENTRO RESIDENCES



This key plan is not to scale

SCALE 1:100



## UNIT TYPE B6(p)

#07-10

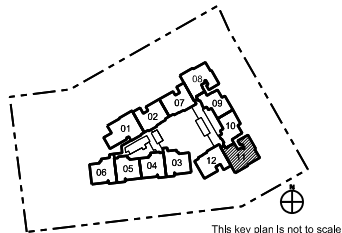
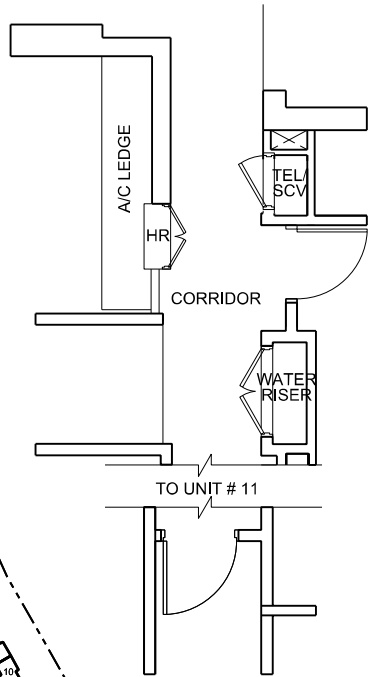
The above plans are subject to change as may be approved by the relevant authorities.

BCA BP Plan No.: A1608-00002-2008

Approved Date:

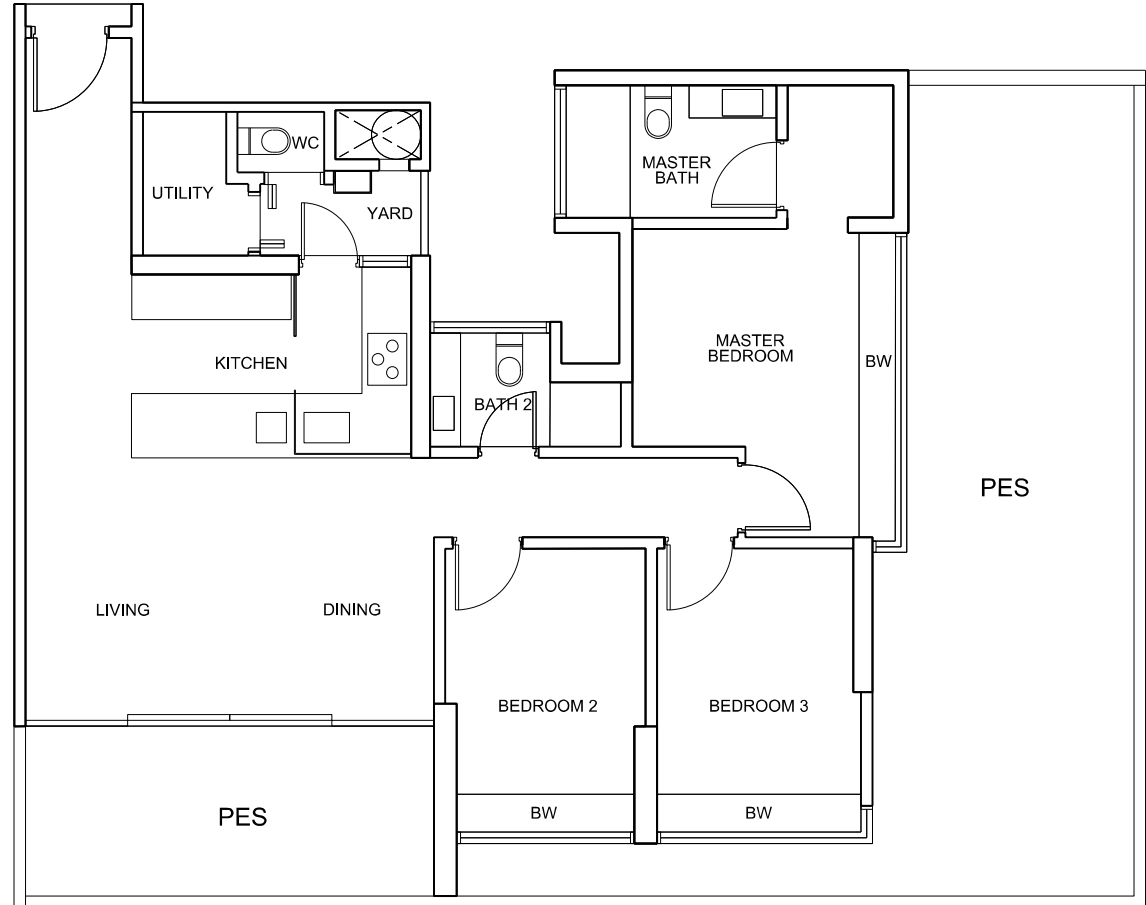
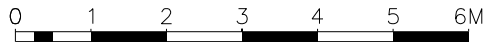
- BP01 - 16 December 2008
- BP02 - 10 July 2009
- BP03 - 06 August 2009
- BP04 - 21 November 2011
- BP05 - 23 March 2012

# CENTRO RESIDENCES



This key plan is not to scale

SCALE 1:100



## UNIT TYPE C5(p)

#07-11

\*Accessory lot is provided for A/C Ledge.

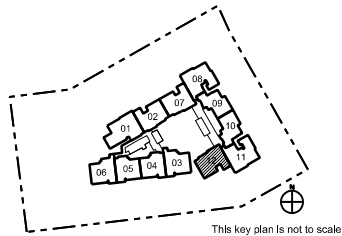
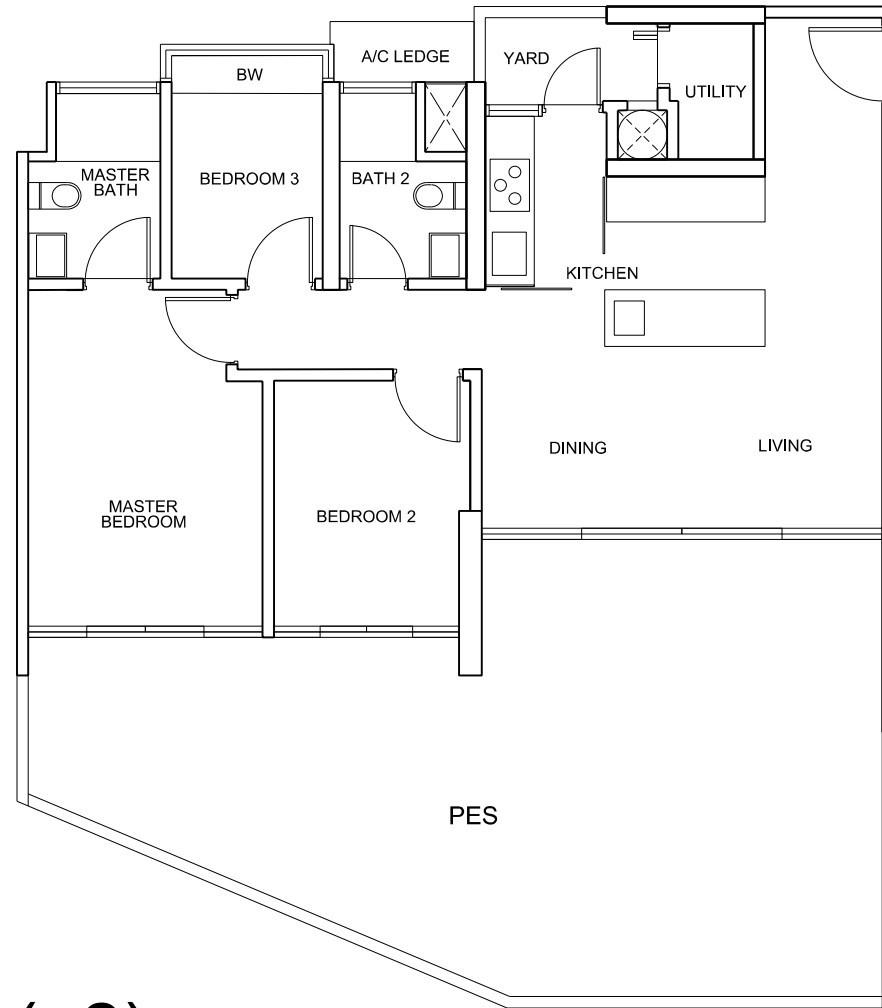
The above plans are subject to change as may be approved by the relevant authorities.

BCA BP Plan No.: A1608-00002-2008

Approved Date:

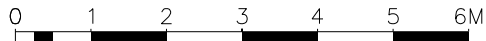
- BP01 - 16 December 2008
- BP02 - 10 July 2009
- BP03 - 06 August 2009
- BP04 - 21 November 2011
- BP05 - 23 March 2012

# CENTRO RESIDENCES



This key plan is not to scale

SCALE 1:100



## UNIT TYPE C1c(p2)

#07-12

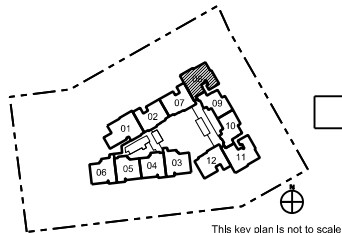
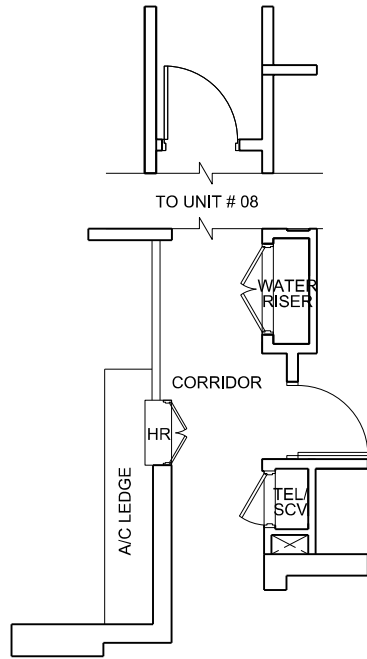
The above plans are subject to change as may be approved by the relevant authorities.

BCA BP Plan No.: A1608-00002-2008

Approved Date:

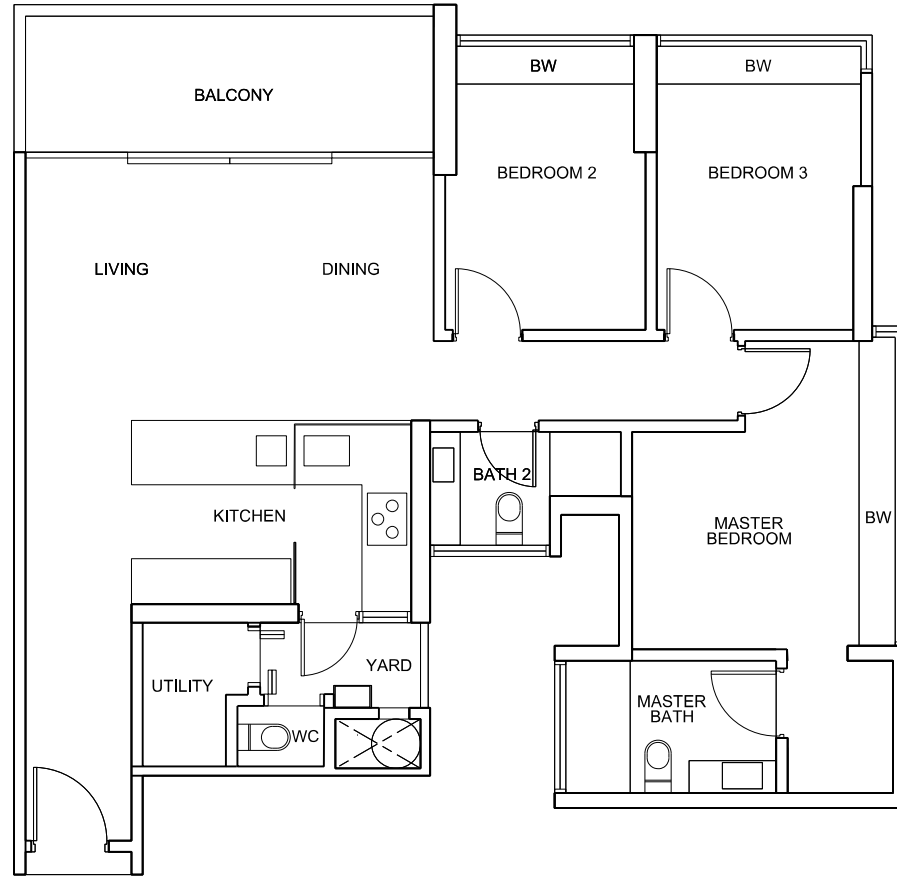
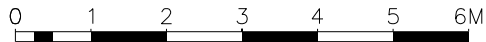
- BP01 - 16 December 2008
- BP02 - 10 July 2009
- BP03 - 06 August 2009
- BP04 - 21 November 2011
- BP05 - 23 March 2012

# CENTRO RESIDENCES



This key plan is not to scale

SCALE 1:100



## UNIT TYPE C5(b)

#23-08, #24-08, #26-08, #28-08, #32-08

\*Accessory lot is provided for A/C Ledge.

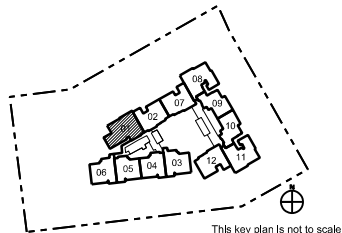
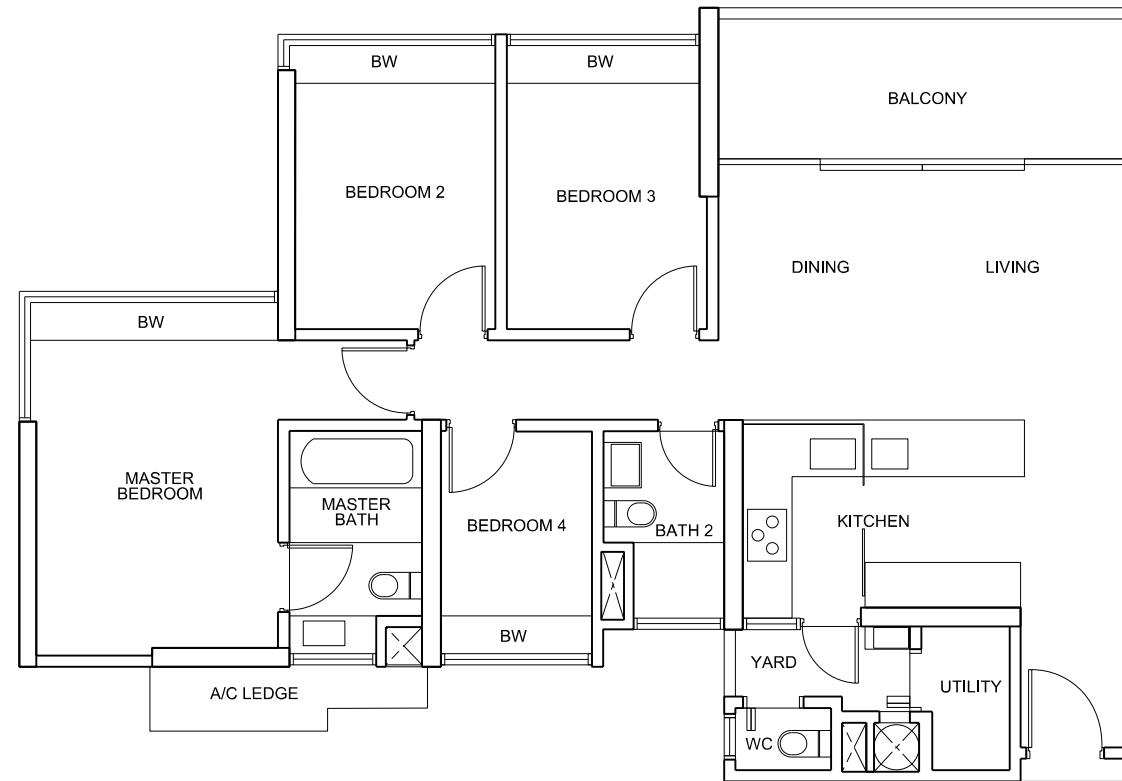
The above plans are subject to change as may be approved by the relevant authorities.

BCA BP Plan No.: A1608-00002-2008

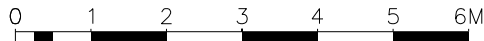
Approved Date:

BP01 - 16 December 2008  
 BP02 - 10 July 2009  
 BP03 - 06 August 2009  
 BP04 - 21 November 2011  
 BP05 - 23 March 2012

# CENTRO RESIDENCES



SCALE 1:100



## UNIT TYPE D1c(b)

#24-01 TO #29-01

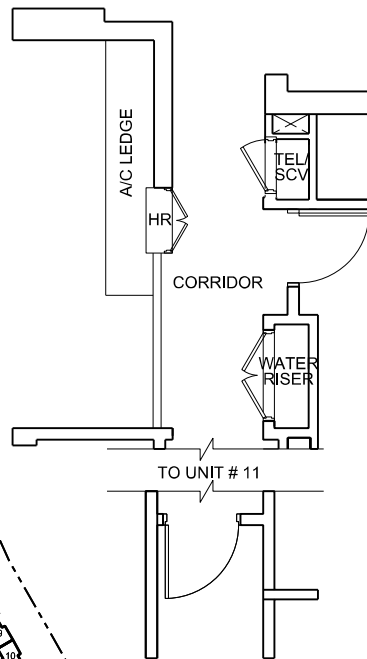
The above plans are subject to change as may be approved by the relevant authorities.

BCA BP Plan No.: A1608-00002-2008

Approved Date:

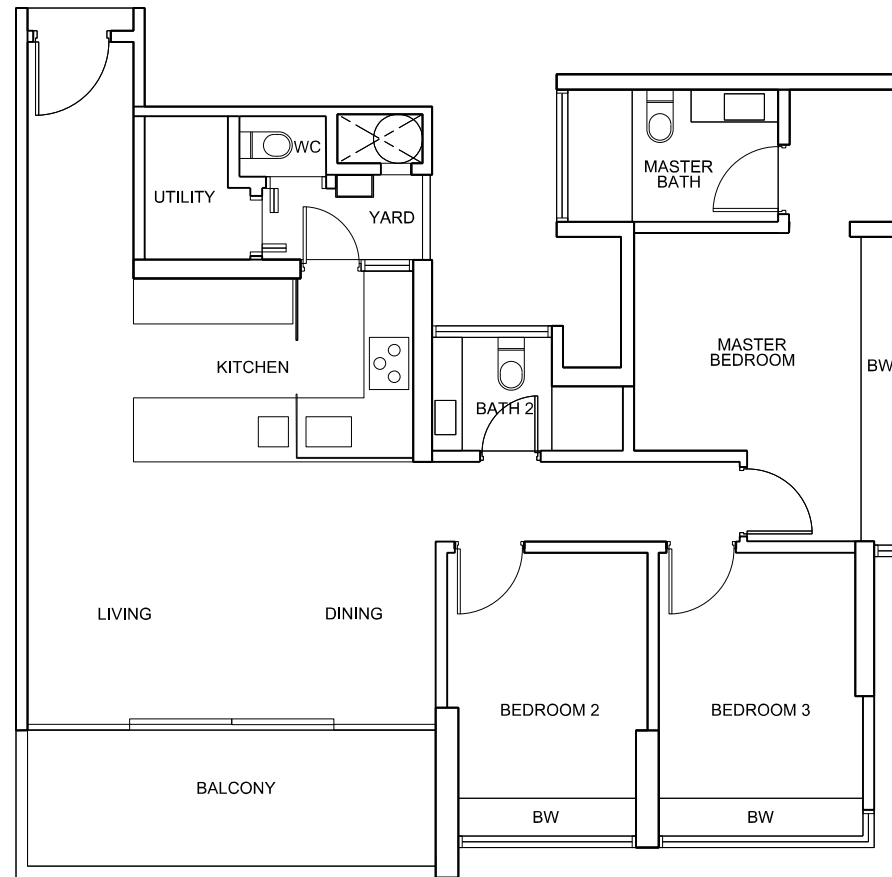
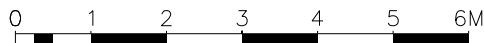
BP01 - 16 December 2008  
BP02 - 10 July 2009  
BP03 - 06 August 2009  
BP04 - 21 November 2011  
BP05 - 23 March 2012

# CENTRO RESIDENCES



This key plan is not to scale

SCALE 1:100



## UNIT TYPE C5(b)

#24-11 TO #27-11

\*Accessory lot is provided for A/C Ledge.

The above plans are subject to change as may be approved by the relevant authorities.

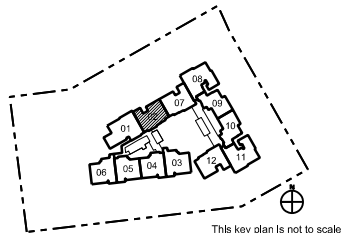
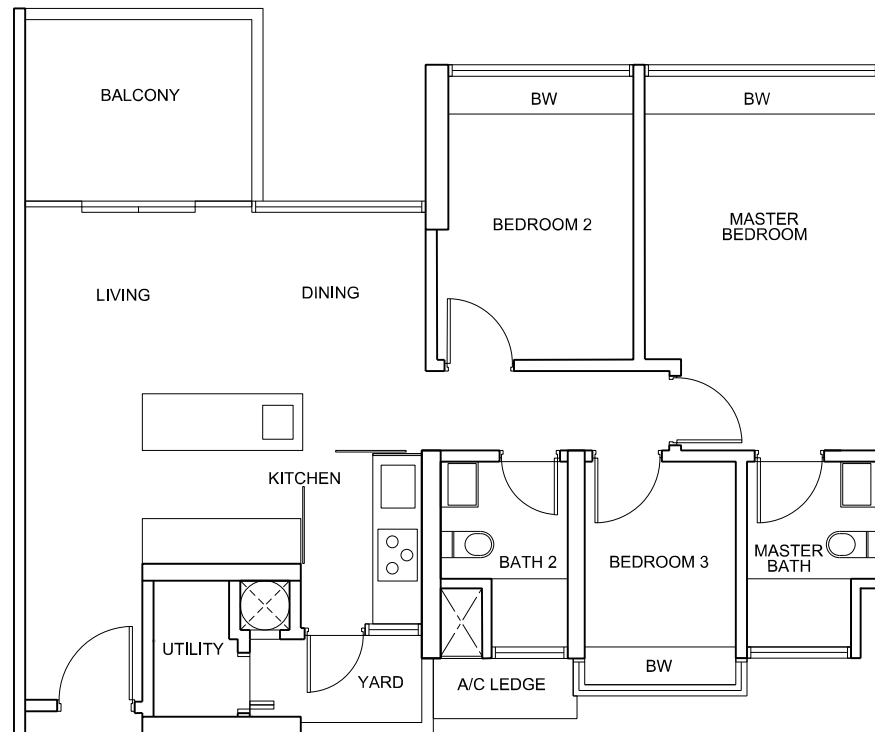
BCA BP Plan No.: A1608-00002-2008

Approved Date:

BP01 - 16 December 2008  
 BP02 - 10 July 2009  
 BP03 - 06 August 2009  
 BP04 - 21 November 2011  
 BP05 - 23 March 2012

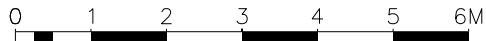


# CENTRO RESIDENCES



This key plan is not to scale

SCALE 1:100



## UNIT TYPE C2c(b)

#31-02 TO # 33-02

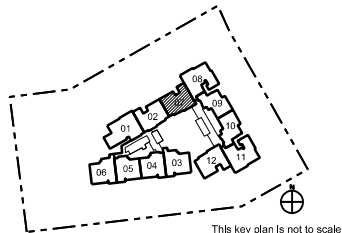
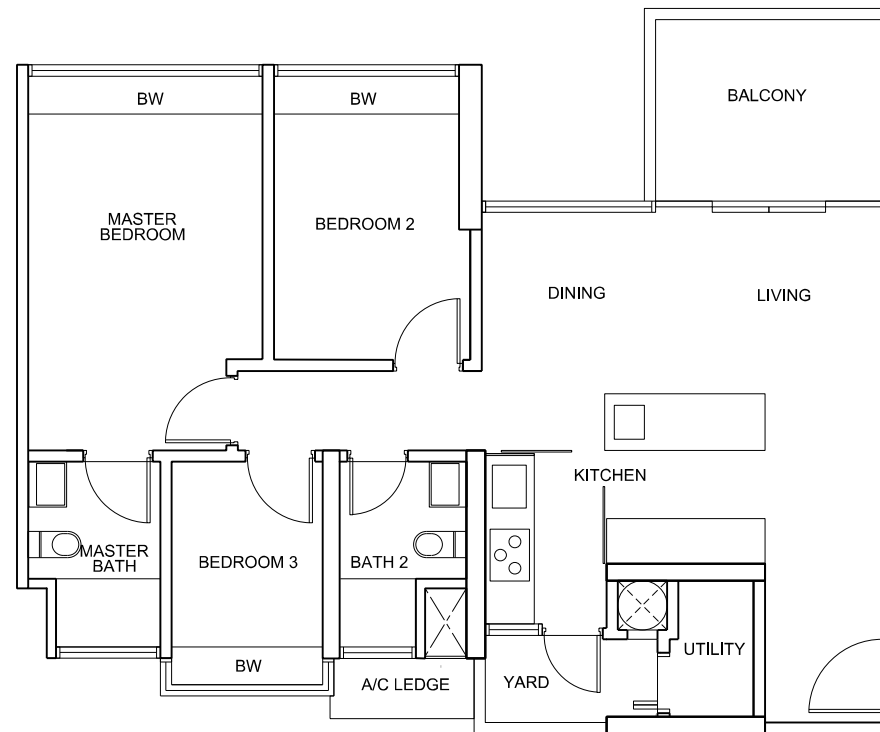
The above plans are subject to change as may be approved by the relevant authorities.

BCA BP Plan No.: A1608-00002-2008

Approved Date:

BP01 - 16 December 2008  
BP02 - 10 July 2009  
BP03 - 06 August 2009  
BP04 - 21 November 2011  
BP05 - 23 March 2012

# CENTRO RESIDENCES



SCALE 1:100



## UNIT TYPE C1c(b)

#32-07

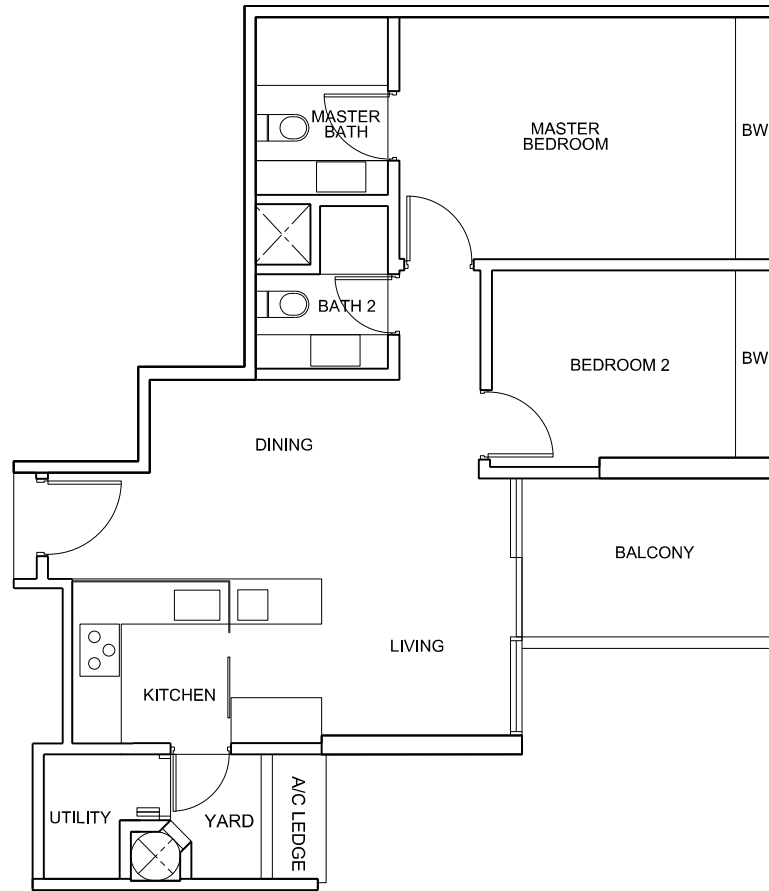
The above plans are subject to change as may be approved by the relevant authorities.

BCA BP Plan No.: A1608-00002-2008

Approved Date:

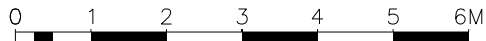
BP01 - 16 December 2008  
BP02 - 10 July 2009  
BP03 - 06 August 2009  
BP04 - 21 November 2011  
BP05 - 23 March 2012

# CENTRO RESIDENCES



This key plan is not to scale

SCALE 1:100



## UNIT TYPE B6(b)

#32-10

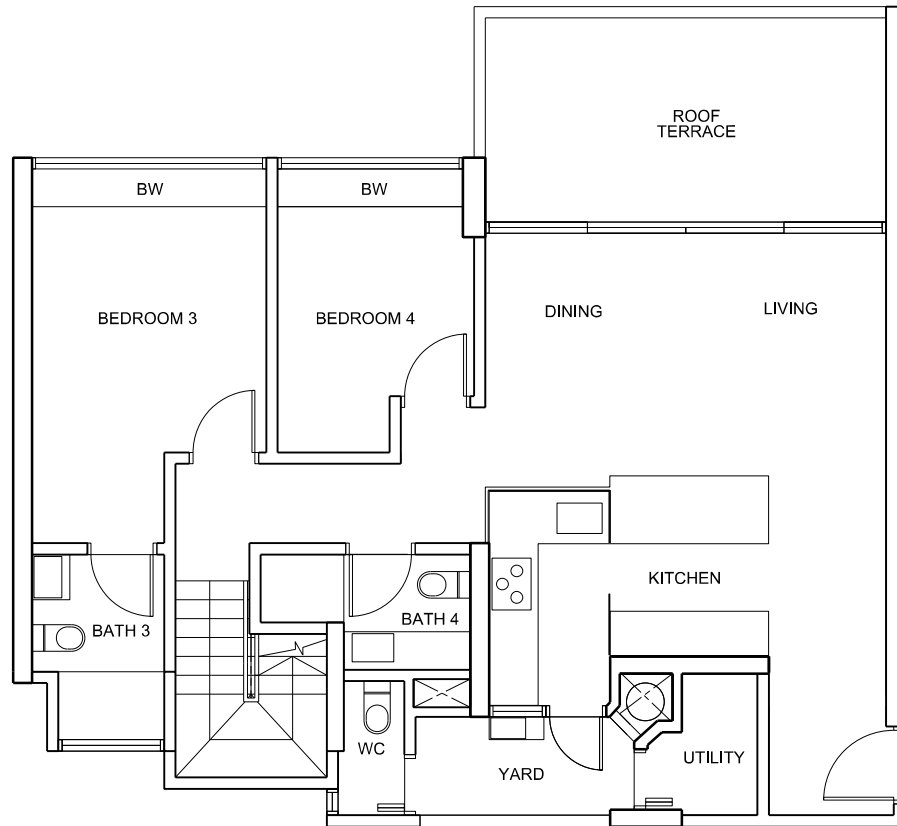
The above plans are subject to change as may be approved by the relevant authorities.

BCA BP Plan No.: A1608-00002-2008

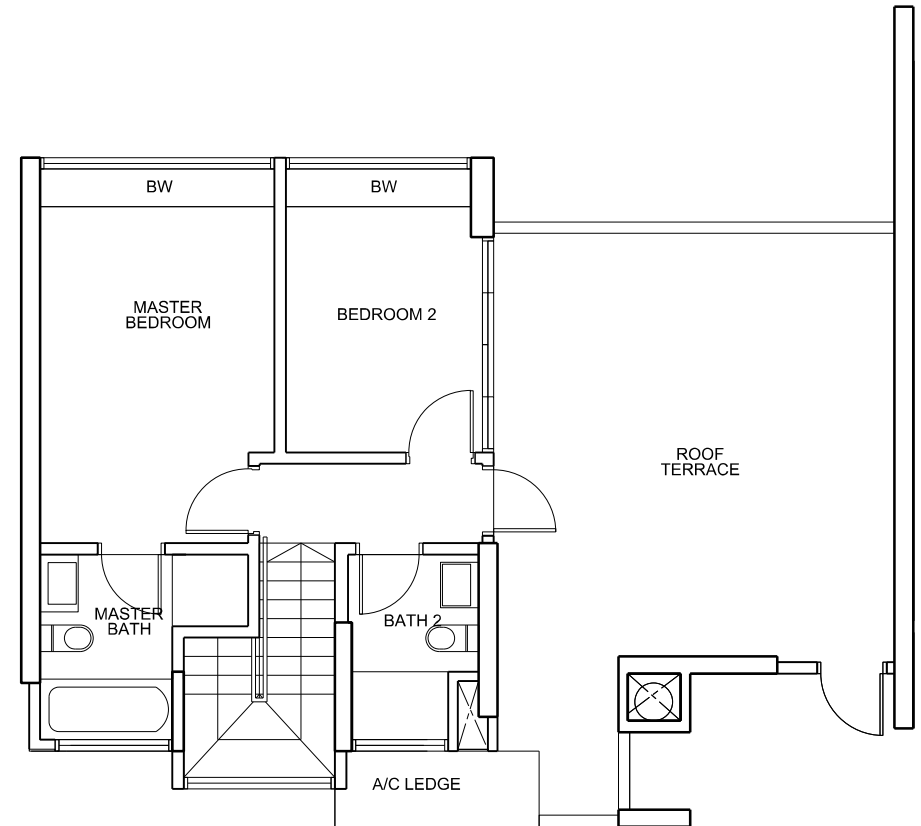
Approved Date:

BP01 - 16 December 2008  
BP02 - 10 July 2009  
BP03 - 06 August 2009  
BP04 - 21 November 2011  
BP05 - 23 March 2012

# CENTRO RESIDENCES



LOWER STOREY PLAN



UPPER STOREY PLAN

## UNIT TYPE P1

# 33 - 07

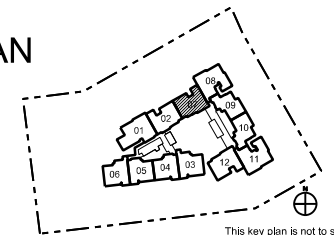
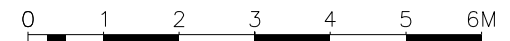
The above plans are subject to change as may be approved by the relevant authorities.

BCA BP Plan No.: A1608-00002-2008

Approved Date:

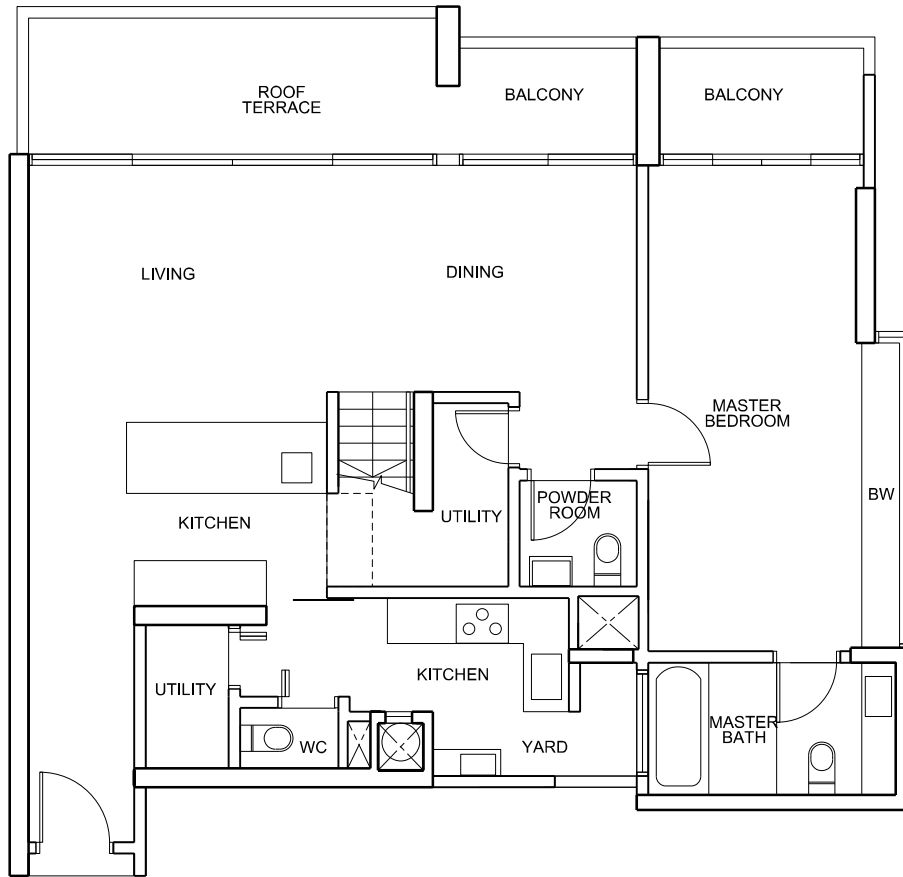
- BP01 - 16 December 2008
- BP02 - 10 July 2009
- BP03 - 06 August 2009
- BP04 - 21 November 2011
- BP05 - 23 March 2012

SCALE 1:100

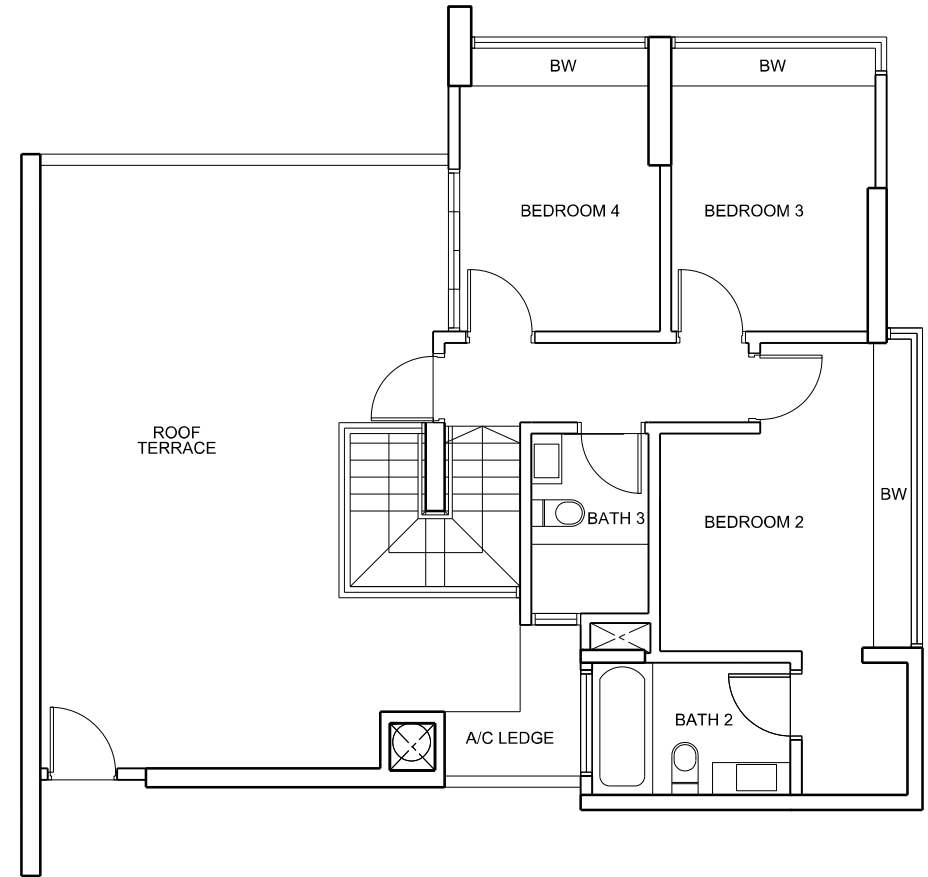


This key plan is not to scale

# CENTRO RESIDENCES



LOWER STOREY PLAN



UPPER STOREY PLAN

## UNIT TYPE P2

# 33 - 08

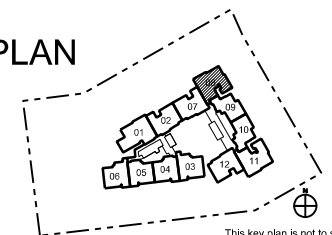
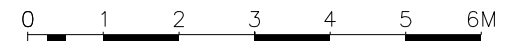
The above plans are subject to change as may be approved by the relevant authorities.

BCA BP Plan No.: A1608-00002-2008

Approved Date:

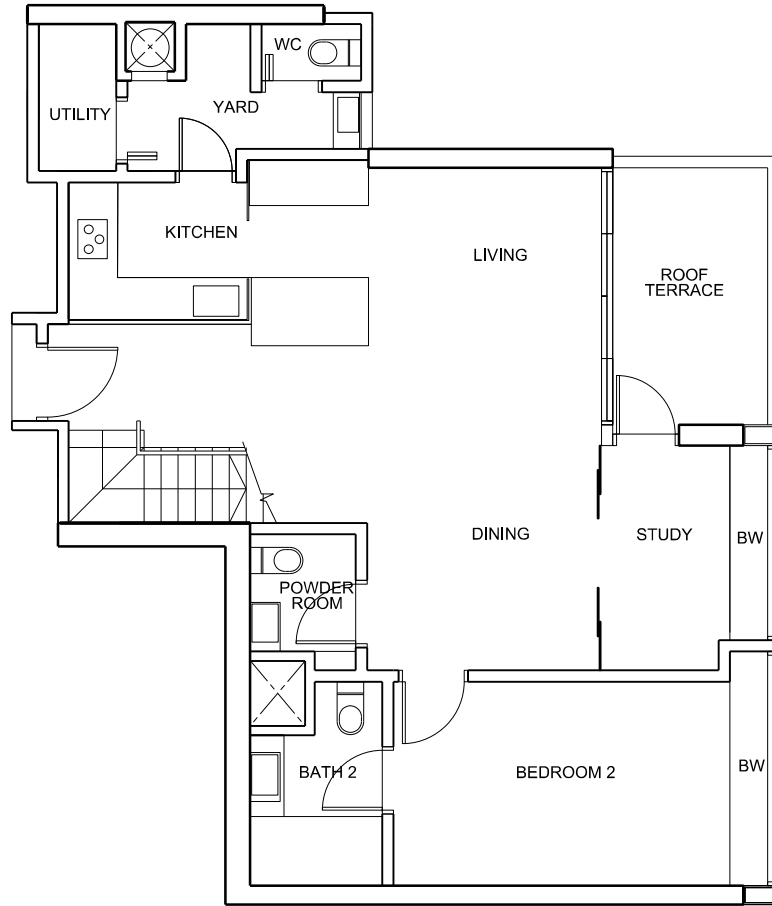
- BP01 - 16 December 2008
- BP02 - 10 July 2009
- BP03 - 06 August 2009
- BP04 - 21 November 2011
- BP05 - 23 March 2012

SCALE 1:100

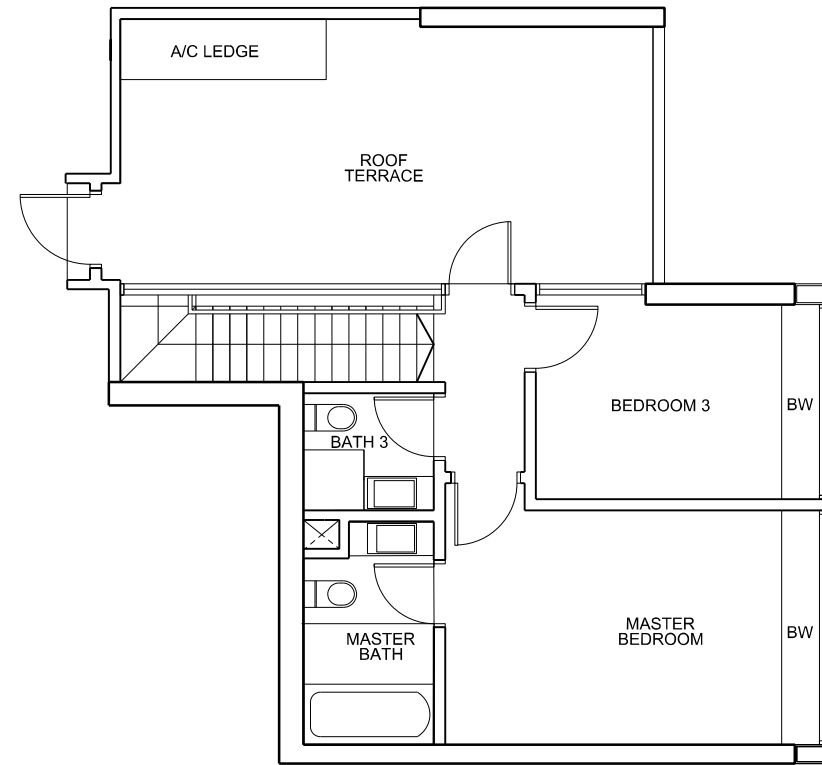


This key plan is not to scale

# CENTRO RESIDENCES



LOWER STOREY PLAN



UPPER STOREY PLAN

## UNIT TYPE P3

# 33 - 09

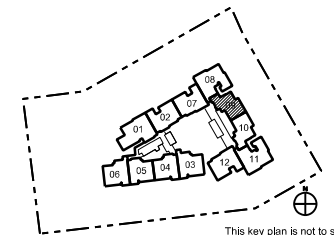
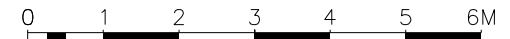
The above plans are subject to change as may be approved by the relevant authorities.

BCA BP Plan No.: A1608-00002-2008

Approved Date:

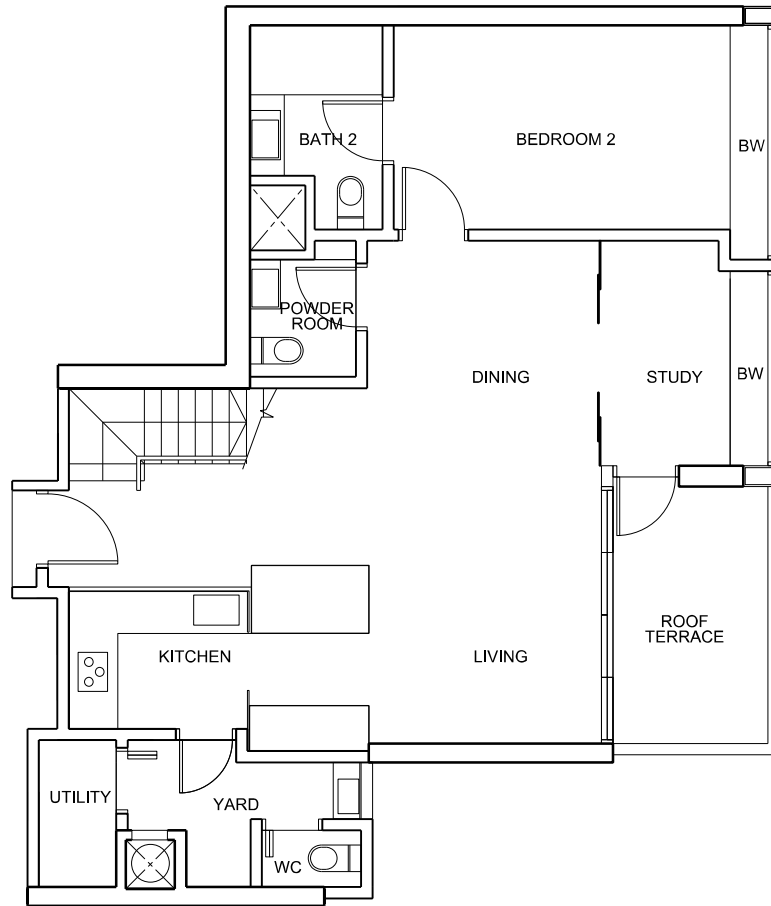
- BP01 - 16 December 2008
- BP02 - 10 July 2009
- BP03 - 06 August 2009
- BP04 - 21 November 2011
- BP05 - 23 March 2012

SCALE 1:100

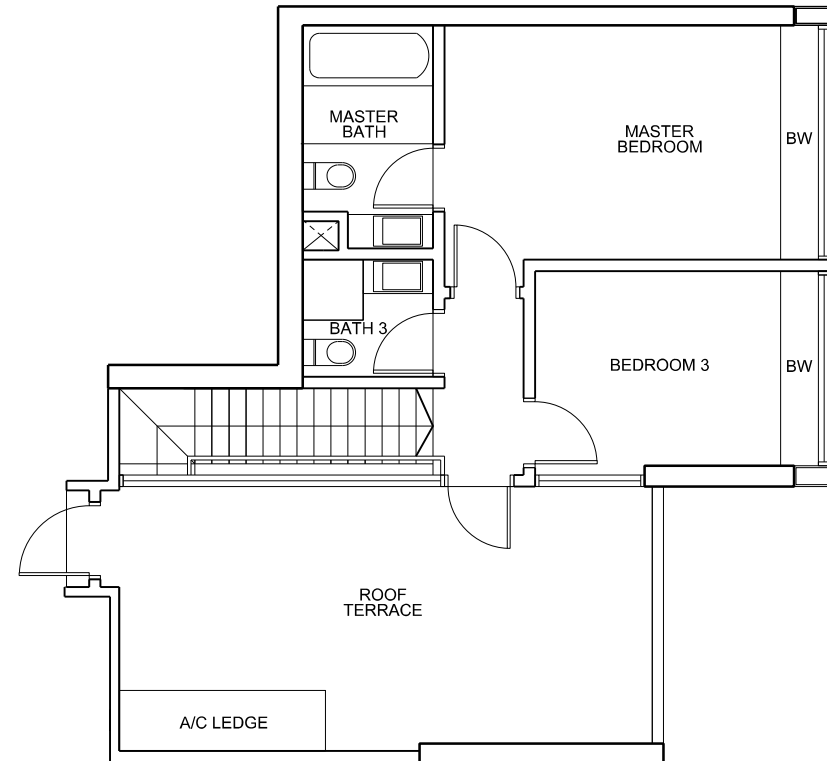


This key plan is not to scale

# CENTRO RESIDENCES



LOWER STOREY PLAN



UPPER STOREY PLAN

## UNIT TYPE P3

# 33 - 10

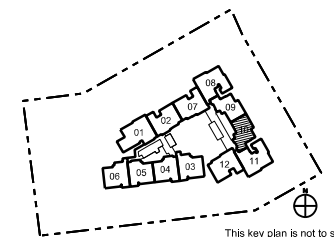
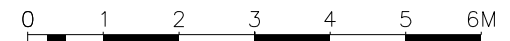
The above plans are subject to change as may be approved by the relevant authorities.

BCA BP Plan No.: A1608-00002-2008

Approved Date:

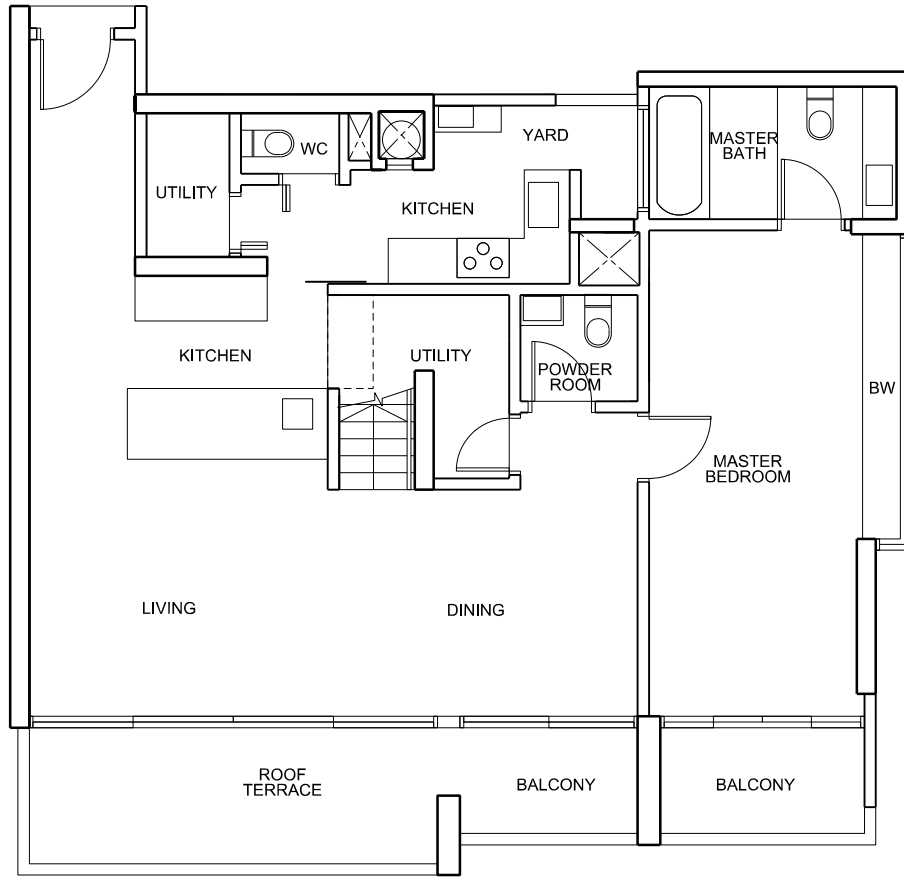
- BP01 - 16 December 2008
- BP02 - 10 July 2009
- BP03 - 06 August 2009
- BP04 - 21 November 2011
- BP05 - 23 March 2012

SCALE 1:100

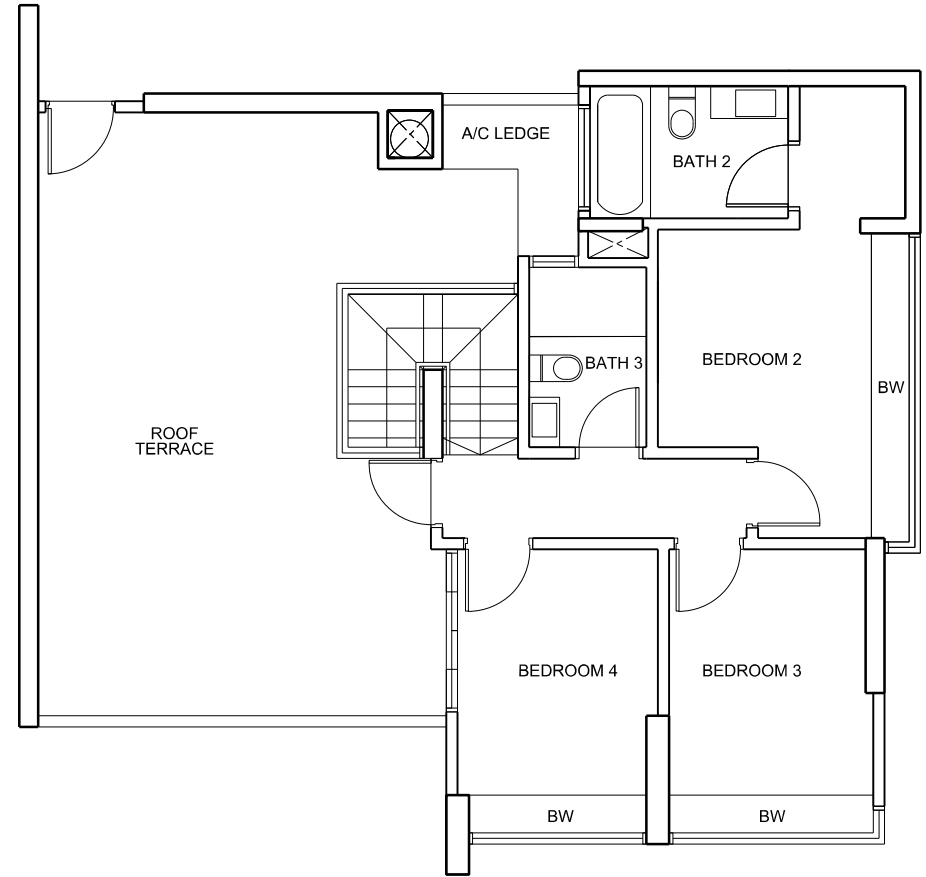


This key plan is not to scale

# CENTRO RESIDENCES



LOWER STOREY PLAN



UPPER STOREY PLAN

## UNIT TYPE P2

# 33 - 11

The above plans are subject to change as may be approved by the relevant authorities.

BCA BP Plan No.: A1608-00002-2008

Approved Date:

- BP01 - 16 December 2008
- BP02 - 10 July 2009
- BP03 - 06 August 2009
- BP04 - 21 November 2011
- BP05 - 23 March 2012

SCALE 1:100

