



BartleyRidge



*Wrap up your day
and come away with me.*

You'll pack the lemons, I'll peel the lemons. We'll have a day in the
spite of summer. We'll savor a picnic among the gifts of summer.
We'll have such a splendid time in our secret hideaway, where all under
nature's watch.



*I'll take you to a place.
I call it my secret hideaway.*

Discover Barseley Ridge. An 868-unit development where modern architecture meets a beautiful organic landscape. Terraces are groomed into pretty slopes. Beds of flowers invite butterflies to play. Themed gardens are just about everywhere. There's also an abundance of unit types to choose from: 1, 2, 2+1, 3, 3+1, 4-bedroom and Dual Key apartments. Whether it's for your family or a life of individual freedom, you'll find a perfect hideaway here in your world at Barseley Ridge.



*We'll shake off the crowds.
There're plenty of ways.*



- a) 50M Lap Pool, incorporating:
 - Aqua pool deck
 - Sunset pool deck
- b) 25M Lap Pool, incorporating:
 - Hot tub
 - Sunset pool deck
- c) Clubhouse Cluster 1, incorporating:
 - Gymnasium
 - Reading room
 - Changing rooms (male and female changing rooms, each with access rooms)
 - Handicapped toilet
- d) Clubhouse Cluster 2, incorporating:
 - Function rooms (3 nos.)
 - Tables
 - Handicapped toilet
- e) Gourmet Pavilion, incorporating:
 - Outdoor dining & lounge with open kitchen
 - Dip pool
 - Hot tub
 - Tables
- f) Children's fun area, incorporating:
 - Children's splash pool
 - Play areas
 - BBQ pavilion
- g) Hydrotherapy Centre, incorporating:
 - Hydros spa area (with massage jet)
 - Hydros spa bed (with massage jet)
 - Massage pavilions
 - Tables
- h) Community Garden, incorporating:
 - Secluded garden
 - Greenhouse rooms
- i) Ecology Pond
- j) BBQ Pavilion
- k) Dining Pavilion
- l) Lounge Pavilion
- m) Trolley Garden
- n) Putting Green
- o) Meditation Pods
- p) Entrance cascading water feature
- q) Tennis Courts (1 no, Hard Court)
- r) Basketball Court (Half Court)
- s) Barbecue
- t) Outdoor Fitness Swings
- u) Drop-Off-Park with Guardhouse
- v) Entry to Carpark
- w) Exit from Carpark
- x) Side Terrace with Covered Linkway (walk-in development only)
- y) Substation or Recharge
- z) Bin Centre or Recharge

Time flies when we're together.

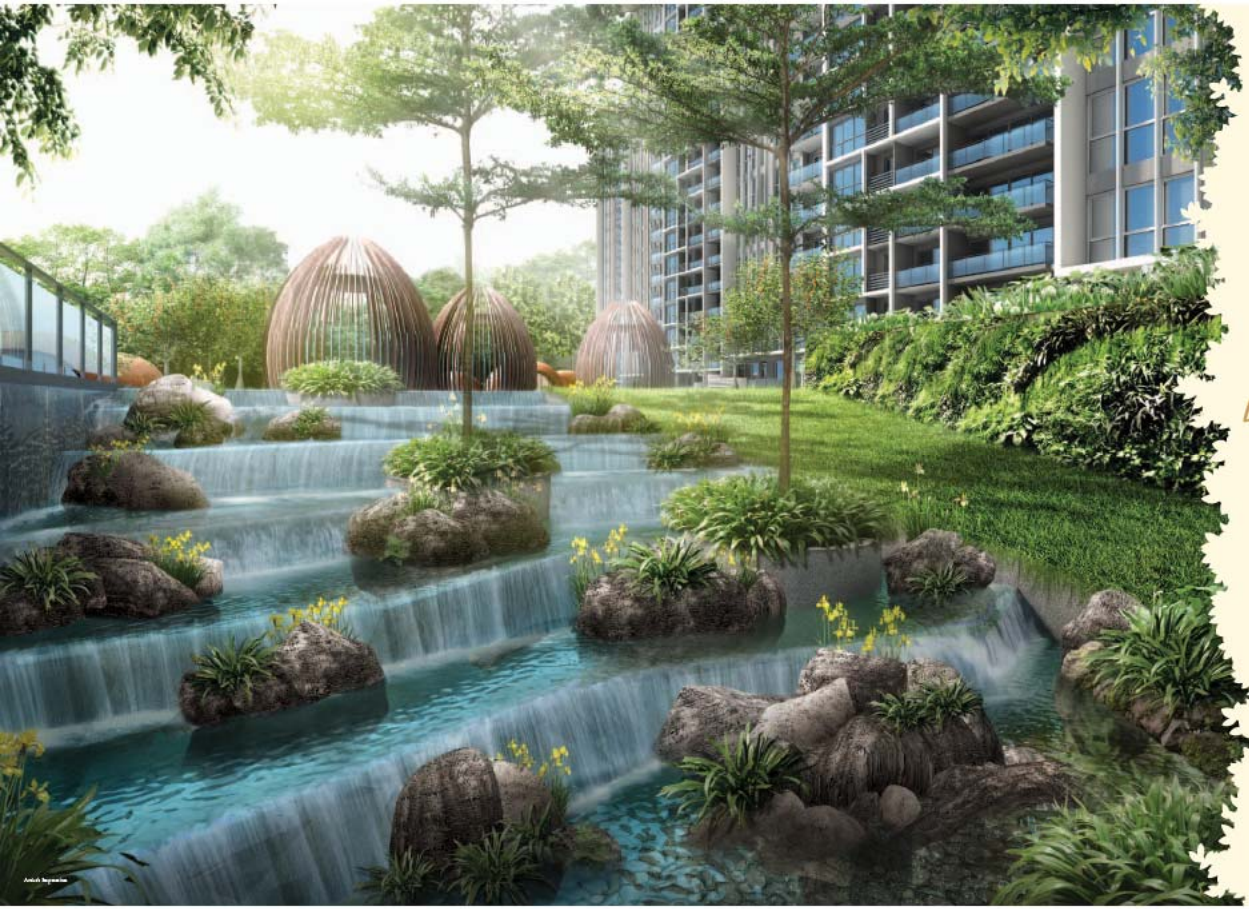
At Bantley Ridge, there's a million ways to spend a cozy day, start with the Ecology Pond. Take a refreshing stroll by the water or make it your educational park to teach your child about interesting species. Then, continue your winery at the Community Garden. Enclosed by greenery, it offers a charming area for an evening of festive cocktails, joyous celebrations and the most delightful memories.



*The stars aren't out.
But still, a brilliant night.*

The night scene at home is especially mesmerizing, thanks to the artfully designed clubhouse. Scintillated with dazzling lights, these open-air domes are tailored to different lifestyles and activities.





*Let's fall in love.
I know just the perfect place.*

Planning a date with that special someone? Enjoy undisturbed time at the Meditation Pods. Dine in charming ambience at the Dining Pavilion. Then after your meal, take a relaxing stroll. The lush, scenic landscapes will make your evening extra spellbinding.

A modern high-rise apartment building with a swimming pool and landscaped garden. The building features glass balconies and a clean, architectural design. The pool is surrounded by lush greenery, including palm trees and various shrubs. The sky is clear and blue, suggesting a bright, sunny day.

*Day or night,
there's a sun in me.*

Round up your family for a sunny morning exercise at the Outdoor Fitness Station. Then challenge your kids to a friendly match at the Tennis Courts or break your personal golfing record at the Putting Green. When evening comes, slow down your pace with a leisurely swim in the 50m Lap Pool. With a history of exercise venues, it's easy to glow with radiance. 24/7.



*Once in a while,
I don't mind giving up
the world for a quiet little corner.*

Hide away in tranquil corners for the ultimate relaxation. Take a break from urbanity and reconnect with nature at the Topiary Garden. For a pampering retreat, immerse in the Hydrotherapy Oasis for a soothing massage while you listen to the lullabies of the water.



*My private hideout. Still the most
welcoming place in the world.*

Brew a pot of coffee, snug up on your couch, browse a magazine. The soft, natural lighting of your living area offers you an airy, congenial environment to read and relax. The harmonious interior hues instantly put your mind at ease while the functional layout accommodates all the creature comforts you need to build a truly lasting nest. And with scenic-like views gawking outside your full-height windows, you'd agree it's so good to be home.







*Would you like pasta or ciabatta
to savour this pleasant evening?*

Cooking up a feast is always a breeze with your fully-equipped kitchen.
As your back and call use quality appliances and fittings. Your evening-up
is made a luxurious affair with premium sanitary fittings.



Sweet dreams in progress.

After work, after party, after it all, your bedroom is the most desirable scenario to come back to. The attached bathroom in almost every unit makes it easy for you to wash up and rest in for the night. A sleek, spacious built-in wardrobe helps store every distraction away for undisturbed rest. Just dim the lights and dream away.





*Let's head out for some fun,
sing and whistle in the sun.*

The Bartley MRT station is mere steps from home, making travelling an ease. Just one MRT stop away is NEX, one of Singapore's most celebrated lifestyle malls, for a fun shop-and-dine day. And in only a few MRT stops, arrive at gleamy Orchard Road, VivoCity or Marina Bay for world-class fashion trends and leisure options.

For drivers, you enjoy convenient island-wide access with three expressways: KPE, CTE and PIE. The new Bartley-Tampines Viaduct also expedites your journeys to the East for leisure and business hotspots like Tampines Mall, Changi Business Park, and East Coast Park. So put on your shoes and wear your best smile, we are ready to go!



*And the best thing is,
the future looks brighter here.*

For every parent who has their children's best interests at heart, here's more reason to smile. There's an unparalleled abundance of renowned schools around Bartley Ridge, from primary, to secondary, to tertiary. *Maria Stella High* and *Papa Laha Methodist Girls'* are within one kilometre from home while *Waters Road Institute* are only a short car ride away. To give your child a head-start in life with your perfect address.



1-Bedroom

TYPE (1)a
 #13-37 to #17-37,
 #13-40* to #17-40*,
 #13-41 to #17-41,
 #13-44* to #17-44*
 43 sqm
 Incl A/C Lodge 1 sqm
 & Balcony 6 sqm

TYPE (1)a1
 #02-37, #01-40*,
 #01-41, #02-44*
 51 sqm
 Incl A/C Lodge 1 sqm
 & BES 14 sqm

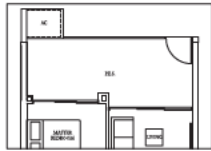
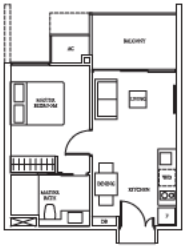
TYPE (1)a2
 #18-37, #18-40*,
 #18-41, #18-44*
 42 sqm
 Incl A/C Lodge 1 sqm
 & Open balcony 6 sqm

TYPE (1)b
 #02-39 to #17-39
 41 sqm
 Incl A/C Lodge 1 sqm
 & Balcony 4 sqm

TYPE (1)b1
 #01-39
 48 sqm
 Incl A/C Lodge 1 sqm
 & BES 11 sqm

TYPE (1)b2
 #18-39
 41 sqm
 Incl A/C Lodge 1 sqm
 & Open balcony 4 sqm

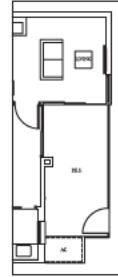
1-Bedroom



Applicable to Type (1)a1 only



Applicable to Type (1)a2 only



Applicable to Type (1)b1 only

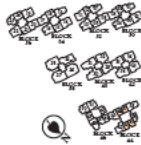


Applicable to Type (1)b2 only



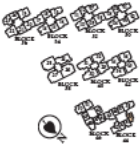
LEGENDA
 F - Fridge DB - Dishwasher Box WC - Water Closet W/D - Washer cum Dryer W - Washer D - Dryer AC - Access Lodge

All plans are subject to change and may be rejected or approved by the relevant authorities. Indicated floor area are approximate and are subject to final survey. *Check with survey agency.



LEGENDA
 F - Fridge DB - Dishwasher Box WC - Water Closet W/D - Washer cum Dryer W - Washer D - Dryer AC - Access Lodge

All plans are subject to change and may be rejected or approved by the relevant authorities. Indicated floor area are approximate and are subject to final survey. *Check with survey agency.



1-Bedroom

1-Bedroom

TYPE (1)c
 #12-43 to #16-43
 46 sqm
 Incl A/C Ledge 1 sqm
 & Balcony 5 sqm

TYPE (1)c1
 #11-49
 59 sqm
 Incl A/C Ledge 1 sqm
 & PES 18 sqm

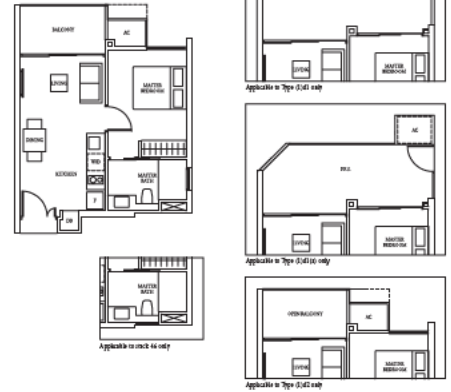
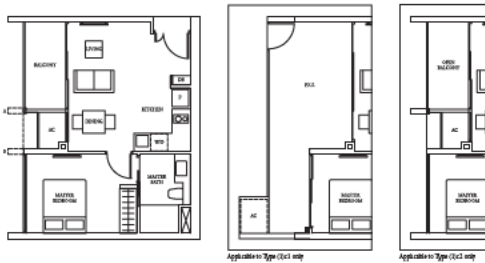
TYPE (1)c2
 #17-49
 46 sqm
 Incl A/C Ledge 1 sqm
 & Open balcony 5 sqm

TYPE (1)d
 #03-45 to #16-45,
 #03-47 to #16-47,
 #02-47 to #16-47
 43 sqm
 Incl A/C Ledge 1 sqm
 & Balcony 5 sqm

TYPE (1)d1
 #01-49, #11-47
 52 sqm
 Incl A/C Ledge 1 sqm
 & PES 14 sqm

TYPE (1)d1(a)
 #01-45
 52 sqm
 Incl A/C Ledge 1 sqm
 & PES 14 sqm

TYPE (1)d2
 #17-45, #17-49,
 #17-47
 43 sqm
 Incl A/C Ledge 1 sqm
 & Open balcony 5 sqm

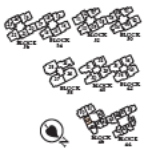


Flats on levels:
 (A) 05, 09 & 13
 (B) 02, 06, 10 & 14
 (A&B) 03, 04, 07, 08, 11, 12, 15 & 16



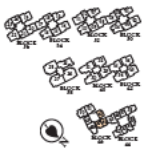
LEGEND:
 F - Fridge DB - Dishwasher Bin WC - Water Closet W/D - Washer cum Dryer W - Washer D - Dryer AC - Access Ledge

All plans are subject to change and may be replaced or approved by the relevant authorities. Indicated floor area approximates and are subject to final survey. Check with survey agency.



LEGEND:
 F - Fridge DB - Dishwasher Bin WC - Water Closet W/D - Washer cum Dryer W - Washer D - Dryer AC - Access Ledge

All plans are subject to change and may be replaced or approved by the relevant authorities. Indicated floor area approximates and are subject to final survey. Check with survey agency.



1-Bedroom

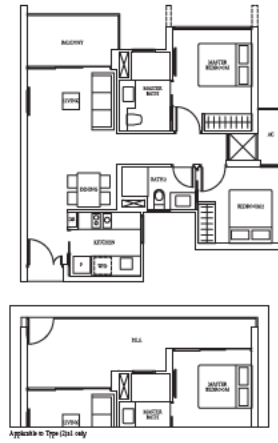
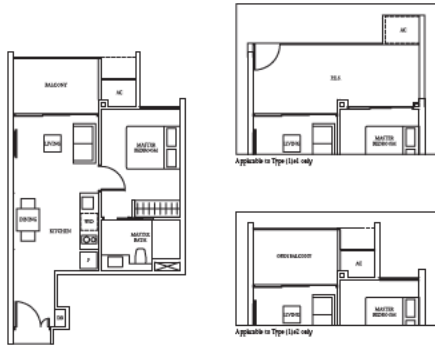
TYPE (1)c
 #13-16 to #16-06,
 #12-12 to #16-12
 46 sqm
 Incl A/C Ledge 1 sqm
 & Balcony 6 sqm

TYPE (1)e1
 #02-06, #01-12
 55 sqm
 Incl A/C Ledge 1 sqm
 & PES 14 sqm

TYPE (1)e2
 #17-06, #17-12
 46 sqm
 Incl A/C Ledge 1 sqm
 & Open balcony 6 sqm

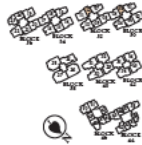
TYPE (2)a
 #03-01 to #16-01
 69 sqm
 Incl A/C Ledge 2 sqm
 & Balcony 6 sqm

TYPE (2)a1
 #01-01
 78 sqm
 Incl A/C Ledge 2 sqm
 & PES 15 sqm



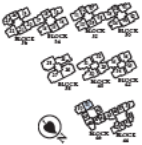
LEGEND:
 F - Fridge DB - Distribution Board WC - Water Closet W/D - Washer cum Dryer W - Washer D - Dryer AC - Access Ledge

All plans are subject to change and may be rejected or approved by the relevant authorities. Indicated floor area are approximate and are subject to final survey. *Check with survey agency.



LEGEND:
 F - Fridge DB - Distribution Board WC - Water Closet W/D - Washer cum Dryer W - Washer D - Dryer AC - Access Ledge

All plans are subject to change and may be rejected or approved by the relevant authorities. Indicated floor area are approximate and are subject to final survey. *Check with survey agency.



2-Bedroom

2-Bedroom

TYPE (2)b

#13-13 to #16-03,
#13-14 to #16-09,
#13-15 to #16-15,
#13-21 to #16-21
67 sqm
Incl A/C Lodge 2 sqm
& Balcony 6 sqm

TYPE (2)b1

#01-03, #01-09,
#01-15, #01-21
62 sqm
Incl A/C Lodge 2 sqm
& RES 20 sqm

TYPE (2)b2

#17-05, #17-09,
#17-15, #17-21
67 sqm
Incl A/C Lodge 2 sqm
& Open balcony 6 sqm

TYPE (2)c

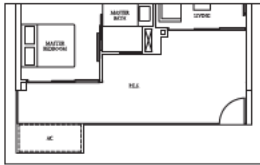
#03-18 to #16-18,
#03-24 to #16-24
68 sqm
Incl A/C Lodge 2 sqm
& Balcony 6 sqm

TYPE (2)c1

#01-18, #01-24
63 sqm
Incl A/C Lodge 2 sqm
& RES 28 sqm

TYPE (2)c2

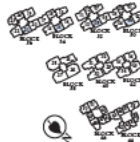
#17-18, #17-24
68 sqm
Incl A/C Lodge 2 sqm
& Open balcony 6 sqm



Applicable in Type (2)b1 only



Applicable in Type (2)b2 only



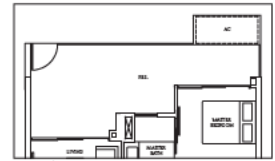
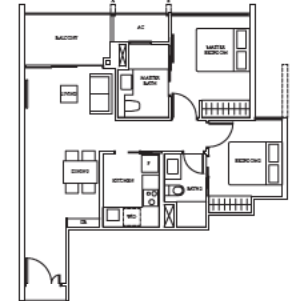
Flats on levels:
(A) 02, 06, 10 & 14
(B) 04, 08 & 12
(A&B) 05, 04, 07, 08, 11, 12, 15 & 16



LEGEND:
F - Fridge DB - Dishwasher Bin WC - Water Closet W/D - Washer cum Dryer W - Washer D - Dryer AC - Access Ledge

All plans are subject to change and may be replaced or approved by the relevant authorities. Indicated floor area measurements are subject to final survey. Check with survey agency.

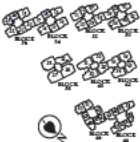
2-Bedroom



Applicable in Type (2)c1 only



Applicable in Type (2)c2 only



Flats on levels:
(A) 02, 06, 10 & 14
(B) 04, 08 & 12
(A&B) 05, 04, 07, 08, 11, 12, 15 & 16



LEGEND:
F - Fridge DB - Dishwasher Bin WC - Water Closet W/D - Washer cum Dryer W - Washer D - Dryer AC - Access Ledge

All plans are subject to change and may be replaced or approved by the relevant authorities. Indicated floor area measurements are subject to final survey. Check with survey agency.

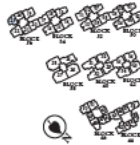
2-Bedroom

TYPE (2)d
 #02-23 to #16-23
 71 sqm
 Incl A/C Lodge 2 sqm
 & Balcony 6 sqm

TYPE (2)d1
 #01-23
 82 sqm
 Incl A/C Lodge 2 sqm
 & YES 17 sqm

TYPE (2+1)a
 #03-42 to #17-42,
 #03-43* to #17-43*
 77 sqm
 Incl A/C Lodge 4 sqm
 & Balcony 6 sqm

TYPE (2+1)a1
 #01-42, #02-43*
 92 sqm
 Incl A/C Lodge 4 sqm
 & YES 20 sqm



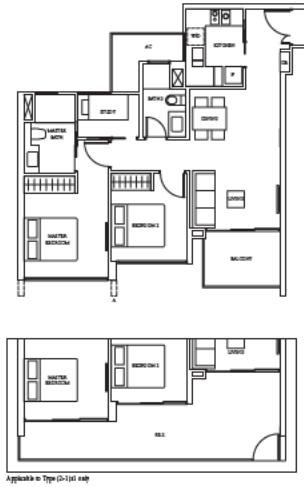
File as Is: (A) 03, 04, 05, 07, 08, 09, 11, 12, 13, 15, 16

0 1 2 3 4 5 6 7 8 9 10 11 12 13 14 15 16

LEGEND:
 F - Fridge DB - Distribution Box WC - Water Closet W/D - Washer can Dyer W - Washer D - Dyer AC - Access Lodge

All plans are subject to change and may be rejected or approved by the relevant authorities. Indicated floor area approximates and are subject to final survey. *Check with survey agency.

2+1-Bedroom

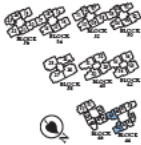


File as Is: (A) 02, 04, 05, 06, 08, 09, 10, 11, 12, 13, 14, 16, 17

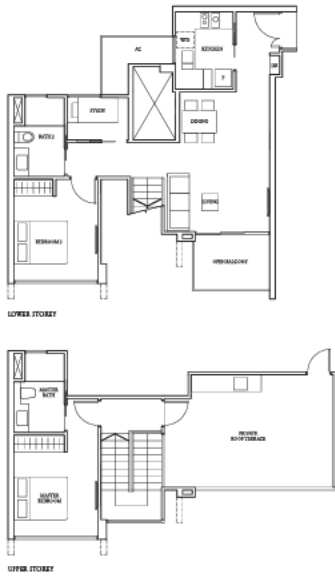
0 1 2 3 4 5 6 7 8 9 10 11 12 13 14 15 16

LEGEND:
 F - Fridge DB - Distribution Box WC - Water Closet W/D - Washer can Dyer W - Washer D - Dyer AC - Access Lodge

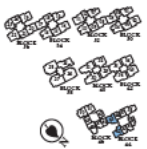
All plans are subject to change and may be rejected or approved by the relevant authorities. Indicated floor area approximates and are subject to final survey. *Check with survey agency.



2+1-Bedroom



TYPE (2+1)a2
 #11-42, #11-43*
 125 sqm
 Incl A/C Ledge 4 sqm, Open balcony 6 sqm,
 Fitness room/terrace 24 sqm & Storage void 7 sqm

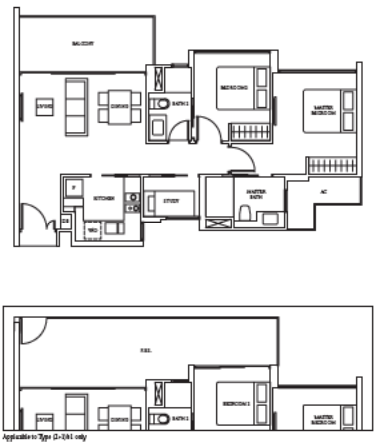


0 1 2 3 4 5M

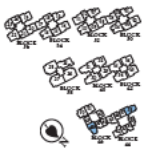
LEGEND:
 F - Fridge DB - Dishwasher Bin WC - Water Closet W/D - Washer cum Dryer W - Washer D - Dryer AC - Access Ledge

All plans are subject to change and may be replaced or approved by the relevant authorities. Indicated floor area are approximate and are subject to final survey. *Check with surveyor always.

2+1-Bedroom



TYPE (2+1)b **TYPE (2+1)b1**
 #03-28 to #17-33, #03-31, #01-40*
 #03-40* to #16-40* 90 sqm
 79 sqm
 Incl A/C Ledge 4 sqm Incl A/C Ledge 4 sqm
 & Balcony 10 sqm & PES 20 sqm

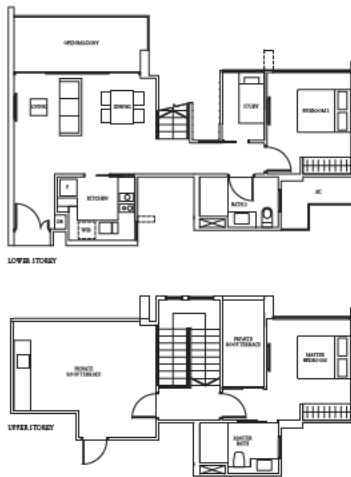


0 1 2 3 4 5M

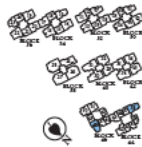
LEGEND:
 F - Fridge DB - Dishwasher Bin WC - Water Closet W/D - Washer cum Dryer W - Washer D - Dryer AC - Access Ledge

All plans are subject to change and may be replaced or approved by the relevant authorities. Indicated floor area are approximate and are subject to final survey. *Check with surveyor always.

2+1-Bedroom



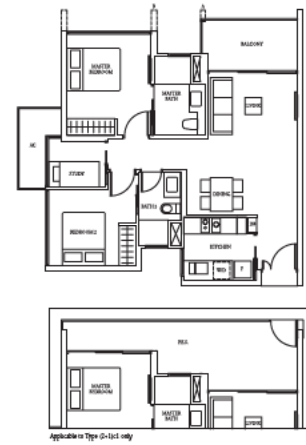
TYPE (2+1)b2
 #18-21, #17-41*
 128 sqm
 Incl A/C Ledge 4 sqm, Open balcony 10 sqm,
 Fitness room/terrace 25 sqm & Storage void 7 sqm



LEGEND
 F - Fridge DB - Distribution Board WC - Water Closet W/D - Washer cum Dryer W - Washer D - Dryer AC - Access Ledge

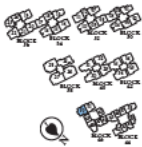
All plans are subject to change and may be revised or approved by the relevant authorities. Indicated floor areas are approximate and are subject to final survey. *Check with surveyor's office.

2+1-Bedroom



TYPE (2+1)c
 #03-09 to #16-09
 77 sqm
 Incl A/C Ledge 4 sqm
 & Balcony 6 sqm

TYPE (2+1)c1
 #01-01
 87 sqm
 Incl A/C Ledge 4 sqm
 & PDS 15 sqm



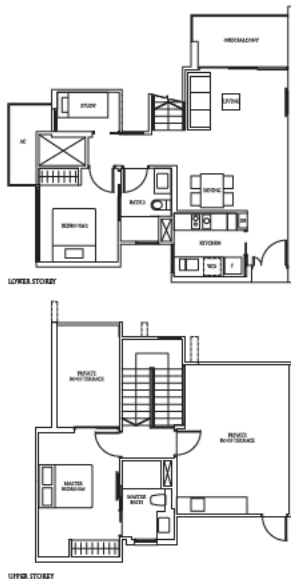
Flats on levels
 (A) 02, 06, 10 & 14
 (B) 03, 07 & 11
 (A&B) 05, 04, 07, 08, 11, 12, 15 & 16



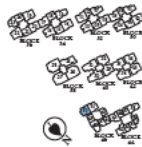
LEGEND
 F - Fridge DB - Distribution Board WC - Water Closet W/D - Washer cum Dryer W - Washer D - Dryer AC - Access Ledge

All plans are subject to change and may be revised or approved by the relevant authorities. Indicated floor areas are approximate and are subject to final survey. *Check with surveyor's office.

2+1-Bedroom

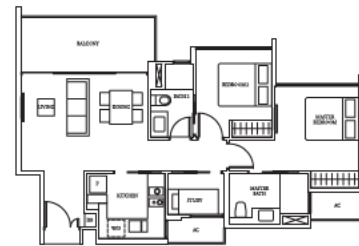


TYPE (2+1)c2
 #17-50
 129 sqm
 Incl A/C Ledge 4 sqm, Open balcony 6 sqm,
 Terrace roof terrace 10 sqm & Stairs void 7 sqm

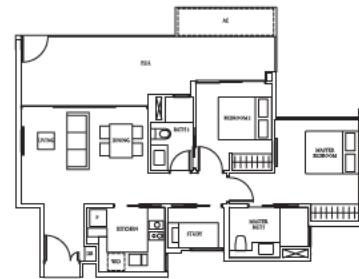


LEGEND:
 F - Fridge DB - Distribution Board WC - Water Closet W/D - Washer cum Dryer W - Washer D - Dryer AC - Access Ledge
 All plans are subject to change and may be amended or approved by the relevant authorities. Indicated floor area are approximate and are subject to final survey. Check with surveyor always.

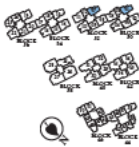
2+1-Bedroom



TYPE (2+1)d
 #03-01 to #16-01,
 #02-07 to #16-07
 79 sqm
 Incl A/C Ledge 4 sqm
 & Balcony 10 sqm

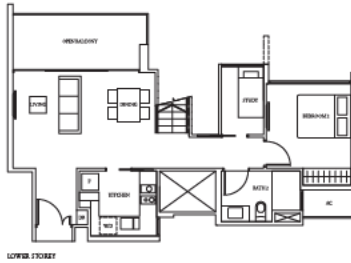


TYPE (2+1)d1
 #02-01, #01-07
 88 sqm
 Incl A/C Ledge 4 sqm
 & FSD 10 sqm

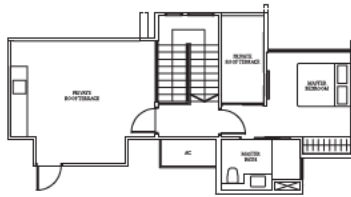


LEGEND:
 F - Fridge DB - Distribution Board WC - Water Closet W/D - Washer cum Dryer W - Washer D - Dryer AC - Access Ledge
 All plans are subject to change and may be amended or approved by the relevant authorities. Indicated floor area are approximate and are subject to final survey. Check with surveyor always.

2+1-Bedroom

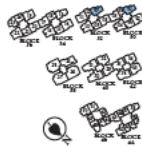


LOWER FLOOR



UPPER FLOOR

TYPE (2+1)d2
 #17-01, #17-07
 130 sqm
 Incl A/C Lounge 4 sqm, Open balcony 10 sqm,
 Private roof terrace 27 sqm & Stairs void 7 sqm

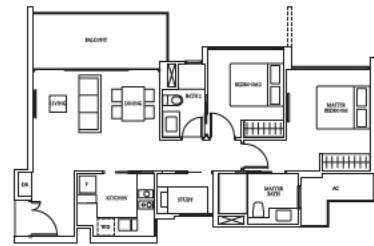


LEGENDA
 F - Fridge DB - Distribution Board WC - Water Closet W/D - Washer cum Dryer W - Washer D - Dryer AC - Access Ledge

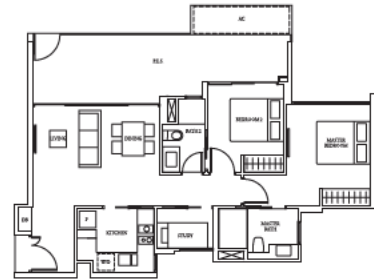
All plans are subject to change and may be amended or approved by the relevant authorities. Indicated floor areas are approximate and are subject to final survey. *Check with surveyor's office.

2+1-Bedroom

TYPE (2+1)e
 #03-13 to #16-13
 80 sqm
 Incl A/C Lounge 4 sqm
 & Balcony 10 sqm

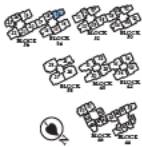


TYPE (2+1)e1
 #01-13
 91 sqm
 Incl A/C Lounge 4 sqm
 & FSD 20 sqm



LEGENDA
 F - Fridge DB - Distribution Board WC - Water Closet W/D - Washer cum Dryer W - Washer D - Dryer AC - Access Ledge

All plans are subject to change and may be amended or approved by the relevant authorities. Indicated floor areas are approximate and are subject to final survey. *Check with surveyor's office.

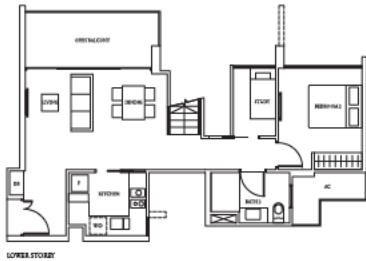


2+1-Bedroom

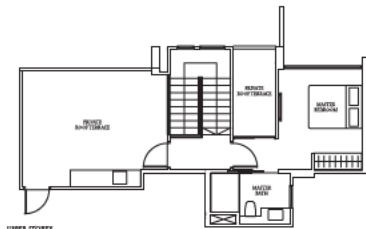
TYPE (2+1)c2
 #17-13
 131 sqm
 Incl A/C Ledge 4 sqm, Open balcony 10 sqm,
 Private roof terrace 27 sqm & Stairs void 7 sqm

TYPE (2+1)f2
 #17-51
 122 sqm
 Incl A/C Ledge 4 sqm, Open balcony 6 sqm,
 Private roof terrace 25 sqm & Stairs void 7 sqm

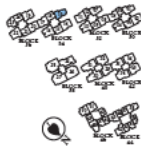
2+1-Bedroom



LOWER STOREY

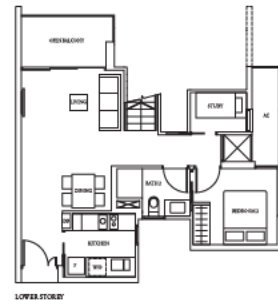


UPPER STOREY

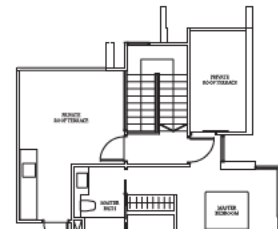


LEGEND:
 F - Fridge DB - Dishwasher Basin WC - Water Closet W/D - Washer cum Dryer W - Washer D - Dryer AC - Access Ledge

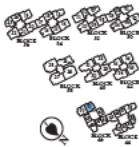
All plans are subject to change and may be rejected or approved by the relevant authorities. Indicated floor areas are approximate and are subject to final survey. *Check with surveyor's office.



LOWER STOREY



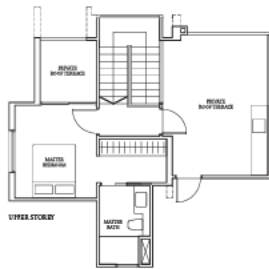
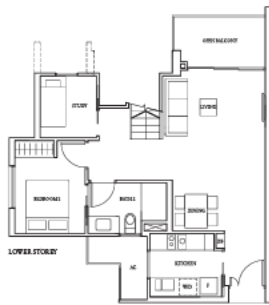
UPPER STOREY



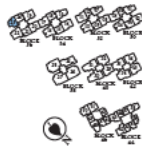
LEGEND:
 F - Fridge DB - Dishwasher Basin WC - Water Closet W/D - Washer cum Dryer W - Washer D - Dryer AC - Access Ledge

All plans are subject to change and may be rejected or approved by the relevant authorities. Indicated floor areas are approximate and are subject to final survey. *Check with surveyor's office.

2+1-Bedroom



TYPE (2+1)g2
 #17-23
 125 sqm
 Incl A/C Lounge 4 sqm, Open balcony 6 sqm,
 Terrace roof terrace 24 sqm St. Stairs void 7 sqm



LEGEND:
 F - Fridge DB - Dishwasher Box WC - Water Closet W/D - Washer cum Dryer W - Washer D - Dryer AC - Access Ledge
 All plans are subject to change and may be rejected or approved by the relevant authorities. Indicated floor area are approximate and are subject to final survey. *Check with survey agency.

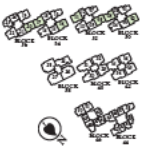
3-Bedroom

TYPE (3)a
 #03-02 to #16-02,
 #03-05 to #16-05,
 #02-08 to #16-08,
 #03-11 to #16-11,
 #02-14 to #16-14,
 #03-17 to #16-17,
 #02-20 to #16-20
 90 sqm
 Incl A/C Lounge 4 sqm
 & Balcony 10 sqm

Fit in blocks:
 (A) 03, 04, 05, 07, 08, 09, 11, 12, 13, 15, 16

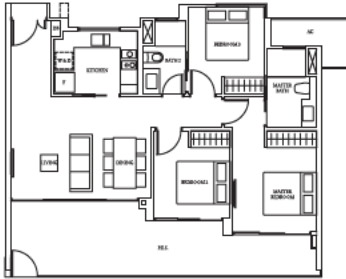


TYPE (3)a1
 #02-01, #01-08,
 #01-11, #01-14,
 #01-17, #01-20
 103 sqm
 Incl A/C Lounge 4 sqm
 & PHS 24 sqm



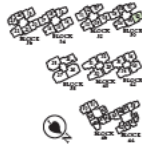
LEGEND:
 F - Fridge DB - Dishwasher Box WC - Water Closet W/D - Washer cum Dryer W - Washer D - Dryer AC - Access Ledge
 All plans are subject to change and may be rejected or approved by the relevant authorities. Indicated floor area are approximate and are subject to final survey. *Check with survey agency.

3-Bedroom



TYPE (3)a1(a)

#01-02
104 sqm
Incl A/C, Lodge 5 sqm
& RES 24 sqm



LEGEND: F - Fridge, DB - Dishwasher Bin, WC - Water Closet, W/D - Washer cum Dryer, W - Washer, D - Dryer, AC - Access Ledge

All plans are subject to change and may be replaced or approved by the relevant authorities. Indicated floor area approximates and are subject to final survey. *Check with survey agency.

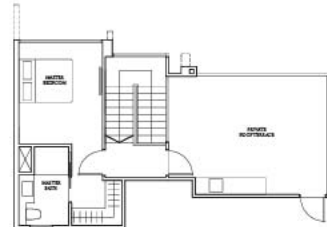
3-Bedroom

TYPE (3)a2

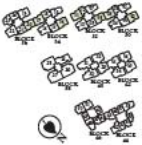
#17-01, #17-05,
#17-08, #17-11,
#17-14, #17-17,
#17-20
145 sqm
Incl A/C, Lodge 4 sqm, Open balcony 10 sqm,
Broom and terrace 24 sqm & Store room 7 sqm



LOWER STOREY



UPPER STOREY



LEGEND: F - Fridge, DB - Dishwasher Bin, WC - Water Closet, W/D - Washer cum Dryer, W - Washer, D - Dryer, AC - Access Ledge

All plans are subject to change and may be replaced or approved by the relevant authorities. Indicated floor area approximates and are subject to final survey. *Check with survey agency.

3-Bedroom



Applicable to Type (3)b1 only

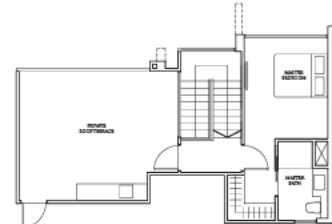
TYPE (3)b
 #02-10 to #16-19
 91 sqm
 Incl A/C Ledge 4 sqm
 & Balcony 10 sqm

TYPE (3)b1
 #01-19
 105 sqm
 Incl A/C Ledge 4 sqm
 & PEB 24 sqm

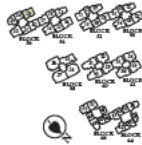
TYPE (3)b2
 #17-19
 147 sqm
 Incl A/C Ledge 4 sqm, Open balcony 10 sqm,
 Terrace roof terrace 20 sqm & Screen wall 7 sqm



LOWER STOREY



UPPER STOREY



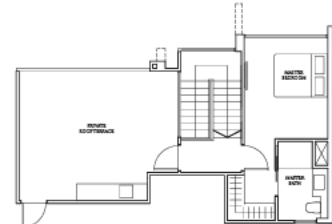
LEGEND: F - Fridge, DW - Dishwasher, WC - Water Closet, W/D - Water can Dryer, W - Washer, D - Dryer, AC - Access Ledge

All plans are subject to change and may be revised or approved by the relevant authorities. Indicated floor area approximates and are subject to final survey. *Check with survey agency.

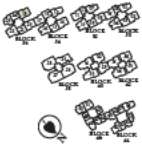
3-Bedroom



LOWER STOREY



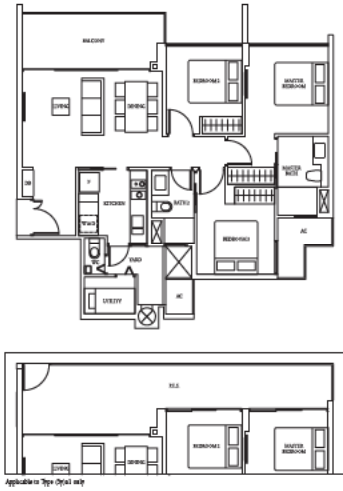
UPPER STOREY



LEGEND: F - Fridge, DW - Dishwasher, WC - Water Closet, W/D - Water can Dryer, W - Washer, D - Dryer, AC - Access Ledge

All plans are subject to change and may be revised or approved by the relevant authorities. Indicated floor area approximates and are subject to final survey. *Check with survey agency.

3-Bedroom with Yard



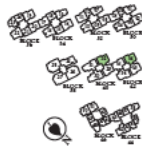
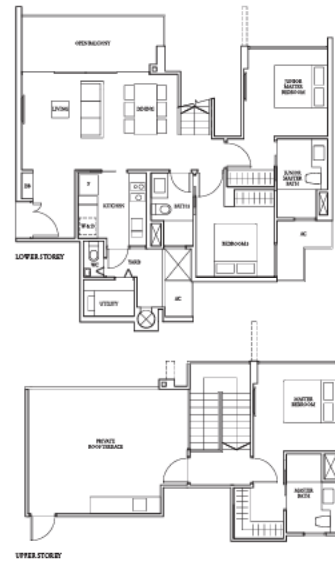
TYPE (3y)a
 #03-32 to #16-32,
 #13-36 to #16-36
 116 sqm
 Incl. AAC Ledge 5 sqm
 & Balcony 10 sqm

TYPE (3y)a1
 #01-32, #01-36
 100 sqm
 Incl. AAC Ledge 5 sqm
 & PMS 22 sqm

TYPE (3y)a2
 #17-32, #17-36
 151 sqm

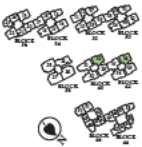
Incl. AAC Ledge 5 sqm, Open balcony 10 sqm,
 Private roof terrace 25 sqm & Screen wall 7 sqm

3-Bedroom with Yard



LEGEND:
 F - Fridge DB - Dishwasher Bin WC - Water Closet WD - Washer cum Dryer W - Waster D - Dryer AC - Access Ledge

All plans are subject to change and may be rejected or approved by the relevant authorities. Indicated floor area are approximate and are subject to final survey. *Check with surveyor always.



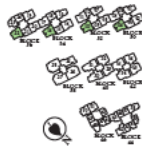
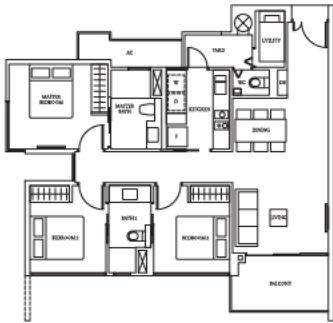
LEGEND:
 F - Fridge DB - Dishwasher Bin WC - Water Closet WD - Washer cum Dryer W - Waster D - Dryer AC - Access Ledge

All plans are subject to change and may be rejected or approved by the relevant authorities. Indicated floor area are approximate and are subject to final survey. *Check with surveyor always.

3-Bedroom with Yard

TYPE (3y)b

#02-04 to #16-04,
#02-10 to #16-10,
#02-16 to #16-16,
#02-22 to #16-22
97 sqm
Incl A/C Ledge 4 sqm
& Balcony 7 sqm



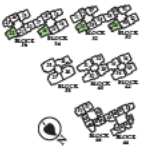
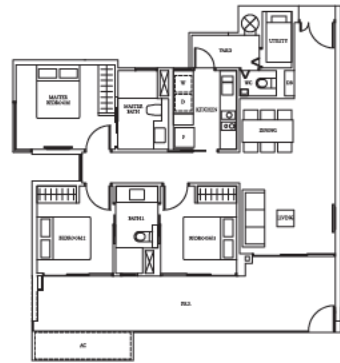
LEGEND:
F - Fridge DB - Dishwasher Box WC - Water Closet W/D - Washer and Dryer W - Washer D - Dryer AC - Access Ledge

All plans are subject to change and may be rejected or approved by the relevant authorities. Indicated floor area approximates and are subject to final survey. Check with surveyor's office.

3-Bedroom with Yard

TYPE (3y)b1

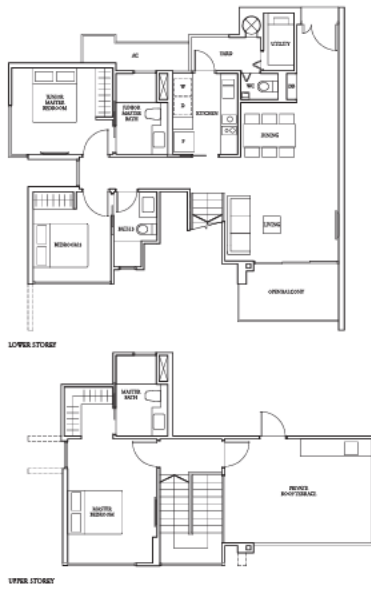
#01-04, #01-10,
#01-16, #01-22
114 sqm
Incl A/C Ledge 4 sqm
& PEB 24 sqm



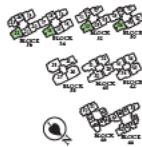
LEGEND:
F - Fridge DB - Dishwasher Box WC - Water Closet W/D - Washer and Dryer W - Washer D - Dryer AC - Access Ledge

All plans are subject to change and may be rejected or approved by the relevant authorities. Indicated floor area approximates and are subject to final survey. Check with surveyor's office.

3-Bedroom with Yard



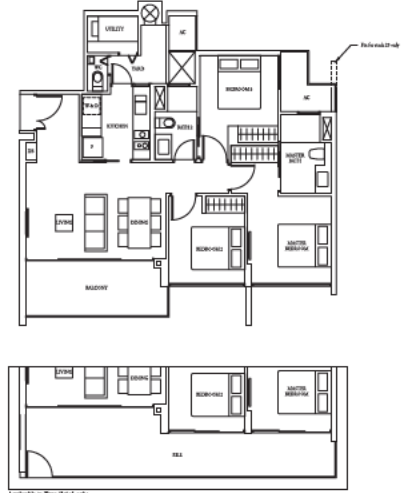
TYPE (3y)b2
 #17-04, #17-10,
 #17-16, #17-21
 148 sqm
 96 sqm - Incl A/C Lodge 4 sqm, Open balcony 7 sqm,
 Private roof terrace 19 sqm & Deck walk 7 sqm



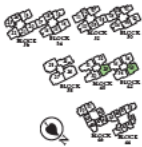
LEGEND:
 F - Fridge DB - Dishwasher Bin WC - Water Closet W/D - Washer and Dryer W - Wbale D - Dyer AC - Access Lodge
 All plans are subject to change and may be rejected or approved by the relevant authorities. Indicated floor area are approximate and are subject to final survey. *Check with surveyor always.

3-Bedroom with Yard

TYPE (3y)c **TYPE (3y)c1**
 #03-29 to #16-29, #01-20, #01-33
 #03-33 to #16-33 108 sqm
 94 sqm Incl A/C Lodge 5 sqm
 Incl A/C Lodge 4 sqm & PDS 22 sqm
 & Balcony 10 sqm

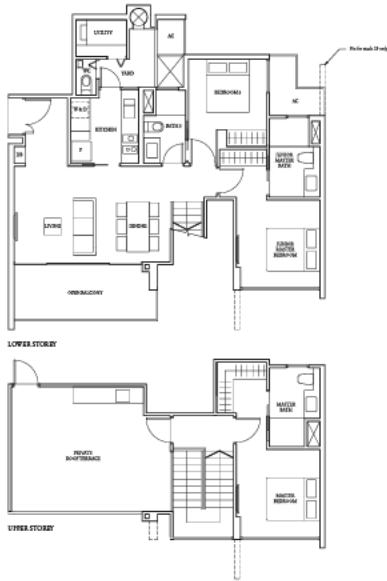


Applies to Type (3y)c1 only



LEGEND:
 F - Fridge DB - Dishwasher Bin WC - Water Closet W/D - Washer and Dryer W - Wbale D - Dyer AC - Access Lodge
 All plans are subject to change and may be rejected or approved by the relevant authorities. Indicated floor area are approximate and are subject to final survey. *Check with surveyor always.

3-Bedroom with Yard

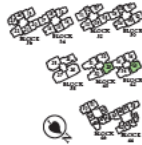


LEGEND:
 F - Fridge DB - Dishwasher Base WC - Water Closet W/D - Washer and Dryer W - Washer D - Dryer AC - Access Ledge

All plans are subject to change and may be rejected or approved by the relevant authorities. Indicated floor area are approximate and are subject to final survey. Check with survey agency.

TYPE (3y)c2

#17-29, #17-33
 130 sqm
 Incl A/C Ledge 5 sqm, Open balcony 10 sqm,
 Terrace roof terrace 23 sqm & Stairs void 7 sqm

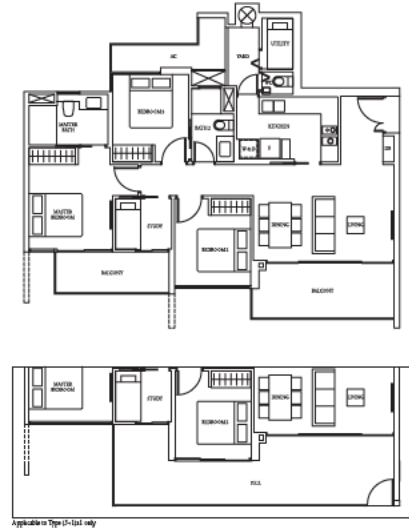


TYPE (3+1)a

#03-24 to #16-24,
 #03-25* to #16-25*
 130 sqm
 Incl A/C Ledge 5 sqm
 & Balcony 17 sqm

TYPE (3+1)a1

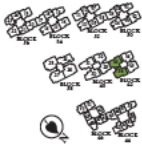
#01-24, #01-25*
 116 sqm
 Incl A/C Ledge 5 sqm
 & PYS 23 sqm



LEGEND:
 F - Fridge DB - Dishwasher Base WC - Water Closet W/D - Washer and Dryer W - Washer D - Dryer AC - Access Ledge

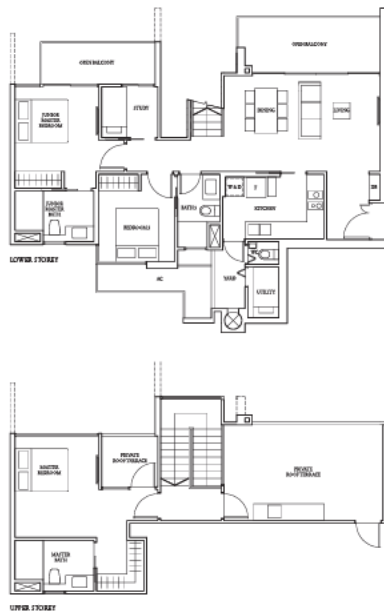
All plans are subject to change and may be rejected or approved by the relevant authorities. Indicated floor area are approximate and are subject to final survey. Check with survey agency.

3+1-Bedroom

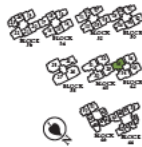


3+1-Bedroom

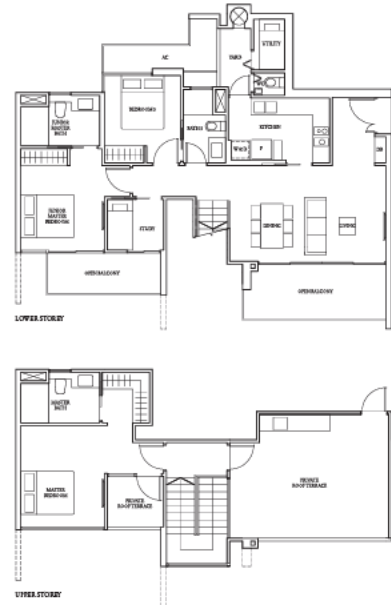
TYPE (3+1)a2
 #17-35
 166 sqm
 Incl A/C Ledge 5 sqm, Open balcony 16 sqm,
 Private roof terrace 24 sqm & Stairs void 7 sqm



LEGEND:
 F - Fridge DB - Dishwasher Box WC - Water Closet W/D - Washer cum Dryer W - Washer D - Dryer AC - Access Ledge
 All plans are subject to change and may be rejected or approved by the relevant authorities. Indicated floor area are approximate and are subject to final survey. Check with surveyor always.



TYPE (3+1)a2(6)
 #17-34
 171 sqm
 Incl A/C Ledge 5 sqm, Open balcony 16 sqm,
 Private roof terrace 29 sqm & Stairs void 7 sqm

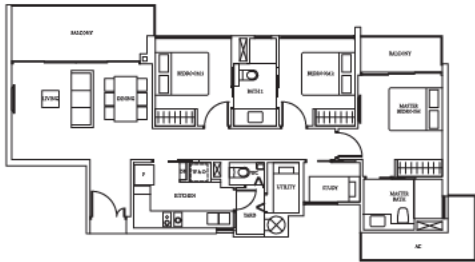


LEGEND:
 F - Fridge DB - Dishwasher Box WC - Water Closet W/D - Washer cum Dryer W - Washer D - Dryer AC - Access Ledge
 All plans are subject to change and may be rejected or approved by the relevant authorities. Indicated floor area are approximate and are subject to final survey. Check with surveyor always.

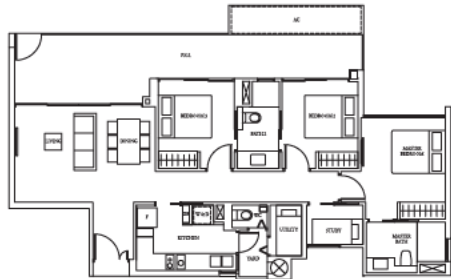


3+1-Bedroom

3+1-Bedroom



TYPE (3+1)b
 #13-25 to #16-25
 188 sqm
 Incl A/C Ledge 6 sqm
 B: Balcony 14 sqm

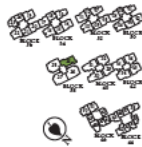


TYPE (3+1)b1
 #11-25
 177 sqm
 Incl A/C Ledge 5 sqm
 B: Balcony 14 sqm



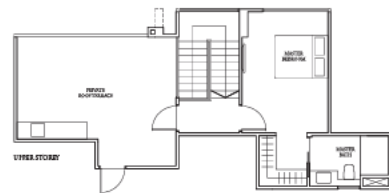
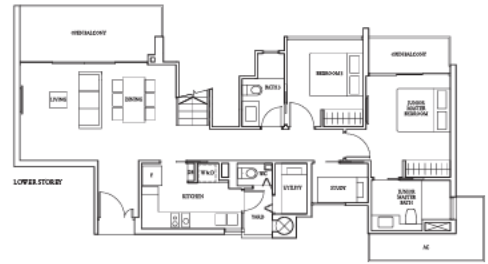
LEGEND: F - Fridge, DB - Dishwasher Box, WC - Water Closet, W/D - Washer cum Dryer, W - Washer, D - Dryer, AC - Access Ledge

All plans are subject to change and may be revised or approved by the relevant authorities. Indicated floor area approximates and are subject to final survey. *Check with survey agency.



3+1-Bedroom

TYPE (3+1)b2
 #17-25
 163 sqm
 Incl A/C Ledge 6 sqm, Open balcony 14 sqm,
 Private roof terrace 24 sqm & Store 7 sqm



LEGEND: F - Fridge, DB - Dishwasher Box, WC - Water Closet, W/D - Washer cum Dryer, W - Washer, D - Dryer, AC - Access Ledge

All plans are subject to change and may be revised or approved by the relevant authorities. Indicated floor area approximates and are subject to final survey. *Check with survey agency.



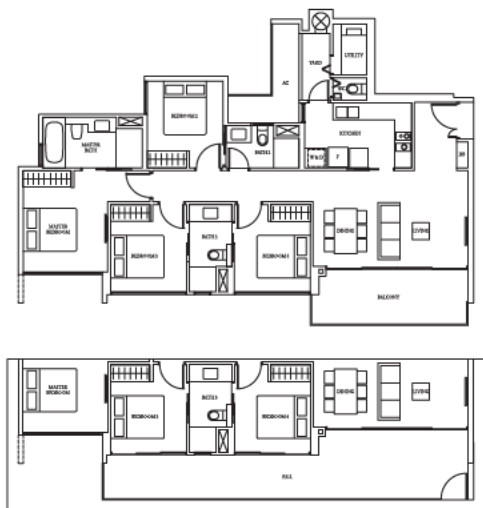
4-Bedroom

TYPE (4)a
 #03-31 to #16-30,
 #18-31 to #16-31*
 123 sqm
 Incl AAC Ledge 5 sqm
 & Balcony 11 sqm

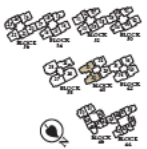
TYPE (4)a1
 #01-30, #01-31*
 126 sqm
 Incl AAC Ledge 5 sqm
 & PMS 28 sqm

TYPE (4)a2
 #17-31
 173 sqm
 Incl AAC Ledge 5 sqm, Open balcony 11 sqm,
 Private roof terrace 22 sqm & Screen wall 7 sqm

4-Bedroom

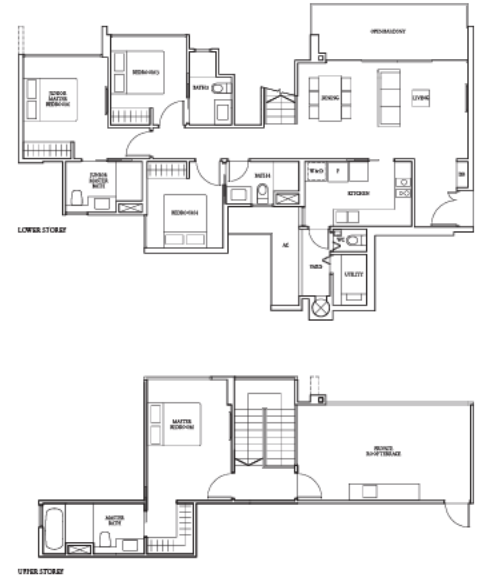


Applicable to Type (4)a1 only

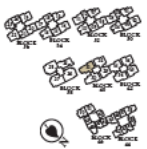


LEGEND:
 F - Fridge DB - Dishwasher Bin WC - Water Closet WD - Washer cum Dryer W - Wcabin D - Dryer AC - Access Ledge

All plans are subject to change and may be rejected or approved by the relevant authorities. Indicated floor area are approximate and are subject to final survey. *Check with survey agency.



UTILITY STORAGE

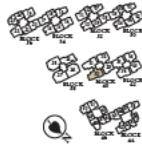
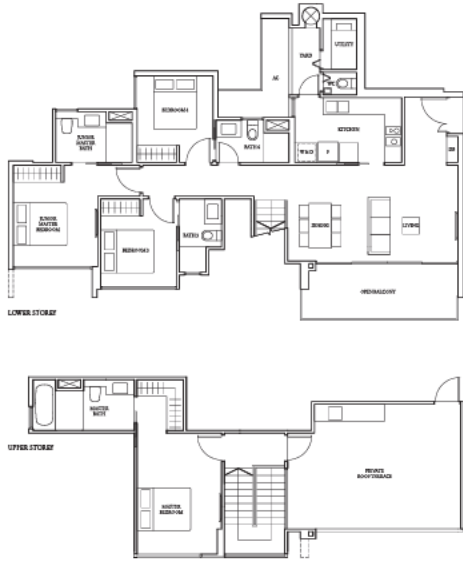


LEGEND:
 F - Fridge DB - Dishwasher Bin WC - Water Closet WD - Washer cum Dryer W - Wcabin D - Dryer AC - Access Ledge

All plans are subject to change and may be rejected or approved by the relevant authorities. Indicated floor area are approximate and are subject to final survey. *Check with survey agency.

4-Bedroom

TYPE (4)a2(a)
 #17-20
 179 sqm
 Incl A/C Ledge 5 sqm, Open balcony 11 sqm,
 Private roof terrace 27 sqm & Stairs void 7 sqm



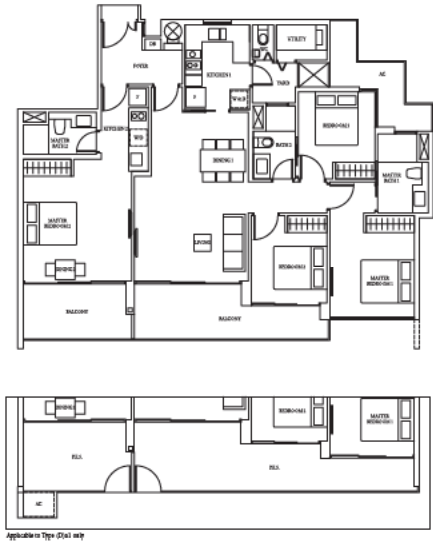
0 1 2 3 4 5 6 7 8 9 10 11 12 13 14 15 16 17 18 19 20 21 22 23 24 25 26 27 28 29 30 31 32 33 34 35 36 37 38 39 40 41 42 43 44 45 46 47 48 49 50 51 52 53 54 55 56 57 58 59 60 61 62 63 64 65 66 67 68 69 70 71 72 73 74 75 76 77 78 79 80 81 82 83 84 85 86 87 88 89 90 91 92 93 94 95 96 97 98 99 100 101 102 103 104 105 106 107 108 109 110 111 112 113 114 115 116 117 118 119 120 121 122 123 124 125 126 127 128 129 130 131 132 133 134 135 136 137 138 139 140 141 142 143 144 145 146 147 148 149 150 151 152 153 154 155 156 157 158 159 160 161 162 163 164 165 166 167 168 169 170 171 172 173 174 175 176 177 178 179 180 181 182 183 184 185 186 187 188 189 190 191 192 193 194 195 196 197 198 199 200

LEGEND:
 F - Fridge DB - Dishwasher Bin WC - Water Closet W/D - Washer and Dryer W - Washer D - Dryer AC - Access Ledge

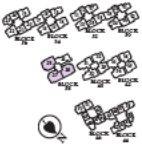
All plans are subject to change and may be replaced or approved by the relevant authorities. Indicated floor area measurements are subject to final survey. Check with surveyor's office.

Dual Key

TYPE (D)a **TYPE (D)a1**
 #03-25 to #16-26, #01-26, #01-27*,
 #03-27* to #16-27*, #01-28
 #02-28 to #16-28 154 sqm
 144 sqm
 Incl A/C Ledge 7 sqm Incl A/C Ledge 8 sqm
 & Balcony 19 sqm & FES 28 sqm



Applicable to Type (D)a1 only



0 1 2 3 4 5 6 7 8 9 10 11 12 13 14 15 16 17 18 19 20 21 22 23 24 25 26 27 28 29 30 31 32 33 34 35 36 37 38 39 40 41 42 43 44 45 46 47 48 49 50 51 52 53 54 55 56 57 58 59 60 61 62 63 64 65 66 67 68 69 70 71 72 73 74 75 76 77 78 79 80 81 82 83 84 85 86 87 88 89 90 91 92 93 94 95 96 97 98 99 100 101 102 103 104 105 106 107 108 109 110 111 112 113 114 115 116 117 118 119 120 121 122 123 124 125 126 127 128 129 130 131 132 133 134 135 136 137 138 139 140 141 142 143 144 145 146 147 148 149 150 151 152 153 154 155 156 157 158 159 160 161 162 163 164 165 166 167 168 169 170 171 172 173 174 175 176 177 178 179 180 181 182 183 184 185 186 187 188 189 190 191 192 193 194 195 196 197 198 199 200

LEGEND:
 F - Fridge DB - Dishwasher Bin WC - Water Closet W/D - Washer and Dryer W - Washer D - Dryer AC - Access Ledge

All plans are subject to change and may be replaced or approved by the relevant authorities. Indicated floor area measurements are subject to final survey. Check with surveyor's office.

SPECIFICATIONS

10 TV AND TELEPHONE

Telephone & TV Schedules	Telephone Outlet	TV Outlet (with TV ready)
Date Type		
All unit type (1)	2	2
All unit type (2)	3	3
All unit type (2-1)	4	4
All unit type (2)	4	4
All unit type (2)	4	4
All unit type (2-1)	5	5
All unit type (2)	5	5
All unit type (2)	6	6

12 LIGHTNING PROTECTION

Lightning protection system shall be provided in accordance with Singapore Standard SS 528.

13 PAINTING

(a) External Wall - External finishes and/or silicon and/or thermal paint and/or removal coating
 (b) Internal Wall - External paint to internal wall and ceiling

14 WATERPROOFING

(a) Apartment Slab
 (i) Waterproofing to floor of bath, kitchen, balcony, open balcony, wet pool, PFD and open carpark, where applicable
 (ii) Waterproofing to walls of bath and shower compartment up to 1800mm.
 (b) Common Area
 Waterproofing to EC flat roof, lap pool, dip pool, children's splash pool, equipped deck, pool deck, hydrotherapy spa, changing rooms, toilet, handicapped toilet, walkway, porch, waste rooms and landscape areas.

15 DRIVEWAY AND CARPARK

(a) Finished concrete slab with integral sealer and/or sealer coating across party to surface driveway and drop of sealer

16 RECREATION FACILITIES

(a) 50m Lap pool (surface area approx. 500 m²), incorporating:
 • Glass pool deck
 • Slatted pool deck
 (b) 200 Lap pool (surface area approx. 500 m²), incorporating:
 • Hot tub
 • Slatted pool deck
 (c) Children's Chamber 1, incorporating:
 • Gymnasium
 • Reading room
 • Changing rooms and first-aid changing room, with wash room
 • Handicapped toilet
 (d) Children's Chamber 2, incorporating:
 • Reception Room (2 seat)
 • Gymnasium
 • Handicapped toilet
 (e) Common Garden, incorporating:
 • Changing rooms
 • Gymnasium
 • Handicapped toilet
 (f) BBQ Pavilion
 (g) Dining Pavilion

17 ADDITIONAL ITEMS

- (a) Bath to high and low level kitchen cabinets in laminated finish with solid surface custom top, back-panel glass backplate, stainless steel sink and free standing fridge for all kitchen.
- (b) Bath in induction hob with hood to kitchen for all unit types (1) and unit types (2), (2-1), (2-2), (2-3), (2-4), (2-5), (2-6), (2-7) and kitchen 2 for all unit types (2) only.
- (c) Bath in glass shower enclosure for all unit types (1), (2) & (2-1) only and kitchen 1 for all unit types (2) only.
- (d) Free-standing clothes washer and dryer for kitchen for all unit types (2), (2-1), (2-2), (2-3) & (4) only and kitchen 1 for all unit types (2) only.
- (e) Bath in wardrobe with sliding door in laminated finish provided for laundry lounge for granite bathroom of unit types (2-1), (2-2), (2-3), (2-4), (2-5), (2-6), (2-7), (2-8), (2-9), (2-10), (2-11), (2-12), (2-13), (2-14), (2-15), (2-16), (2-17), (2-18), (2-19), (2-20), (2-21), (2-22), (2-23), (2-24), (2-25), (2-26), (2-27), (2-28), (2-29), (2-30), (2-31), (2-32), (2-33), (2-34), (2-35), (2-36), (2-37), (2-38), (2-39), (2-40), (2-41), (2-42), (2-43), (2-44), (2-45), (2-46), (2-47), (2-48), (2-49), (2-50), (2-51), (2-52), (2-53), (2-54), (2-55), (2-56), (2-57), (2-58), (2-59), (2-60), (2-61), (2-62), (2-63), (2-64), (2-65), (2-66), (2-67), (2-68), (2-69), (2-70), (2-71), (2-72), (2-73), (2-74), (2-75), (2-76), (2-77), (2-78), (2-79), (2-80), (2-81), (2-82), (2-83), (2-84), (2-85), (2-86), (2-87), (2-88), (2-89), (2-90), (2-91), (2-92), (2-93), (2-94), (2-95), (2-96), (2-97), (2-98), (2-99), (2-100), (2-101), (2-102), (2-103), (2-104), (2-105), (2-106), (2-107), (2-108), (2-109), (2-110), (2-111), (2-112), (2-113), (2-114), (2-115), (2-116), (2-117), (2-118), (2-119), (2-120), (2-121), (2-122), (2-123), (2-124), (2-125), (2-126), (2-127), (2-128), (2-129), (2-130), (2-131), (2-132), (2-133), (2-134), (2-135), (2-136), (2-137), (2-138), (2-139), (2-140), (2-141), (2-142), (2-143), (2-144), (2-145), (2-146), (2-147), (2-148), (2-149), (2-150), (2-151), (2-152), (2-153), (2-154), (2-155), (2-156), (2-157), (2-158), (2-159), (2-160), (2-161), (2-162), (2-163), (2-164), (2-165), (2-166), (2-167), (2-168), (2-169), (2-170), (2-171), (2-172), (2-173), (2-174), (2-175), (2-176), (2-177), (2-178), (2-179), (2-180), (2-181), (2-182), (2-183), (2-184), (2-185), (2-186), (2-187), (2-188), (2-189), (2-190), (2-191), (2-192), (2-193), (2-194), (2-195), (2-196), (2-197), (2-198), (2-199), (2-200), (2-201), (2-202), (2-203), (2-204), (2-205), (2-206), (2-207), (2-208), (2-209), (2-210), (2-211), (2-212), (2-213), (2-214), (2-215), (2-216), (2-217), (2-218), (2-219), (2-220), (2-221), (2-222), (2-223), (2-224), (2-225), (2-226), (2-227), (2-228), (2-229), (2-230), (2-231), (2-232), (2-233), (2-234), (2-235), (2-236), (2-237), (2-238), (2-239), (2-240), (2-241), (2-242), (2-243), (2-244), (2-245), (2-246), (2-247), (2-248), (2-249), (2-250), (2-251), (2-252), (2-253), (2-254), (2-255), (2-256), (2-257), (2-258), (2-259), (2-260), (2-261), (2-262), (2-263), (2-264), (2-265), (2-266), (2-267), (2-268), (2-269), (2-270), (2-271), (2-272), (2-273), (2-274), (2-275), (2-276), (2-277), (2-278), (2-279), (2-280), (2-281), (2-282), (2-283), (2-284), (2-285), (2-286), (2-287), (2-288), (2-289), (2-290), (2-291), (2-292), (2-293), (2-294), (2-295), (2-296), (2-297), (2-298), (2-299), (2-300), (2-301), (2-302), (2-303), (2-304), (2-305), (2-306), (2-307), (2-308), (2-309), (2-310), (2-311), (2-312), (2-313), (2-314), (2-315), (2-316), (2-317), (2-318), (2-319), (2-320), (2-321), (2-322), (2-323), (2-324), (2-325), (2-326), (2-327), (2-328), (2-329), (2-330), (2-331), (2-332), (2-333), (2-334), (2-335), (2-336), (2-337), (2-338), (2-339), (2-340), (2-341), (2-342), (2-343), (2-344), (2-345), (2-346), (2-347), (2-348), (2-349), (2-350), (2-351), (2-352), (2-353), (2-354), (2-355), (2-356), (2-357), (2-358), (2-359), (2-360), (2-361), (2-362), (2-363), (2-364), (2-365), (2-366), (2-367), (2-368), (2-369), (2-370), (2-371), (2-372), (2-373), (2-374), (2-375), (2-376), (2-377), (2-378), (2-379), (2-380), (2-381), (2-382), (2-383), (2-384), (2-385), (2-386), (2-387), (2-388), (2-389), (2-390), (2-391), (2-392), (2-393), (2-394), (2-395), (2-396), (2-397), (2-398), (2-399), (2-400), (2-401), (2-402), (2-403), (2-404), (2-405), (2-406), (2-407), (2-408), (2-409), (2-410), (2-411), (2-412), (2-413), (2-414), (2-415), (2-416), (2-417), (2-418), (2-419), (2-420), (2-421), (2-422), (2-423), (2-424), (2-425), (2-426), (2-427), (2-428), (2-429), (2-430), (2-431), (2-432), (2-433), (2-434), (2-435), (2-436), (2-437), (2-438), (2-439), (2-440), (2-441), (2-442), (2-443), (2-444), (2-445), (2-446), (2-447), (2-448), (2-449), (2-450), (2-451), (2-452), (2-453), (2-454), (2-455), (2-456), (2-457), (2-458), (2-459), (2-460), (2-461), (2-462), (2-463), (2-464), (2-465), (2-466), (2-467), (2-468), (2-469), (2-470), (2-471), (2-472), (2-473), (2-474), (2-475), (2-476), (2-477), (2-478), (2-479), (2-480), (2-481), (2-482), (2-483), (2-484), (2-485), (2-486), (2-487), (2-488), (2-489), (2-490), (2-491), (2-492), (2-493), (2-494), (2-495), (2-496), (2-497), (2-498), (2-499), (2-500), (2-501), (2-502), (2-503), (2-504), (2-505), (2-506), (2-507), (2-508), (2-509), (2-510), (2-511), (2-512), (2-513), (2-514), (2-515), (2-516), (2-517), (2-518), (2-519), (2-520), (2-521), (2-522), (2-523), (2-524), (2-525), (2-526), (2-527), (2-528), (2-529), (2-530), (2-531), (2-532), (2-533), (2-534), (2-535), (2-536), (2-537), (2-538), (2-539), (2-540), (2-541), (2-542), (2-543), (2-544), (2-545), (2-546), (2-547), (2-548), (2-549), (2-550), (2-551), (2-552), (2-553), (2-554), (2-555), (2-556), (2-557), (2-558), (2-559), (2-560), (2-561), (2-562), (2-563), (2-564), (2-565), (2-566), (2-567), (2-568), (2-569), (2-570), (2-571), (2-572), (2-573), (2-574), (2-575), (2-576), (2-577), (2-578), (2-579), (2-580), (2-581), (2-582), (2-583), (2-584), (2-585), (2-586), (2-587), (2-588), (2-589), (2-590), (2-591), (2-592), (2-593), (2-594), (2-595), (2-596), (2-597), (2-598), (2-599), (2-600), (2-601), (2-602), (2-603), (2-604), (2-605), (2-606), (2-607), (2-608), (2-609), (2-610), (2-611), (2-612), (2-613), (2-614), (2-615), (2-616), (2-617), (2-618), (2-619), (2-620), (2-621), (2-622), (2-623), (2-624), (2-625), (2-626), (2-627), (2-628), (2-629), (2-630), (2-631), (2-632), (2-633), (2-634), (2-635), (2-636), (2-637), (2-638), (2-639), (2-640), (2-641), (2-642), (2-643), (2-644), (2-645), (2-646), (2-647), (2-648), (2-649), (2-650), (2-651), (2-652), (2-653), (2-654), (2-655), (2-656), (2-657), (2-658), (2-659), (2-660), (2-661), (2-662), (2-663), (2-664), (2-665), (2-666), (2-667), (2-668), (2-669), (2-670), (2-671), (2-672), (2-673), (2-674), (2-675), (2-676), (2-677), (2-678), (2-679), (2-680), (2-681), (2-682), (2-683), (2-684), (2-685), (2-686), (2-687), (2-688), (2-689), (2-690), (2-691), (2-692), (2-693), (2-694), (2-695), (2-696), (2-697), (2-698), (2-699), (2-700), (2-701), (2-702), (2-703), (2-704), (2-705), (2-706), (2-707), (2-708), (2-709), (2-710), (2-711), (2-712), (2-713), (2-714), (2-715), (2-716), (2-717), (2-718), (2-719), (2-720), (2-721), (2-722), (2-723), (2-724), (2-725), (2-726), (2-727), (2-728), (2-729), (2-730), (2-731), (2-732), (2-733), (2-734), (2-735), (2-736), (2-737), (2-738), (2-739), (2-740), (2-741), (2-742), (2-743), (2-744), (2-745), (2-746), (2-747), (2-748), (2-749), (2-750), (2-751), (2-752), (2-753), (2-754), (2-755), (2-756), (2-757), (2-758), (2-759), (2-760), (2-761), (2-762), (2-763), (2-764), (2-765), (2-766), (2-767), (2-768), (2-769), (2-770), (2-771), (2-772), (2-773), (2-774), (2-775), (2-776), (2-777), (2-778), (2-779), (2-780), (2-781), (2-782), (2-783), (2-784), (2-785), (2-786), (2-787), (2-788), (2-789), (2-790), (2-791), (2-792), (2-793), (2-794), (2-795), (2-796), (2-797), (2-798), (2-799), (2-800), (2-801), (2-802), (2-803), (2-804), (2-805), (2-806), (2-807), (2-808), (2-809), (2-810), (2-811), (2-812), (2-813), (2-814), (2-815), (2-816), (2-817), (2-818), (2-819), (2-820), (2-821), (2-822), (2-823), (2-824), (2-825), (2-826), (2-827), (2-828), (2-829), (2-830), (2-831), (2-832), (2-833), (2-834), (2-835), (2-836), (2-837), (2-838), (2-839), (2-840), (2-841), (2-842), (2-843), (2-844), (2-845), (2-846), (2-847), (2-848), (2-849), (2-850), (2-851), (2-852), (2-853), (2-854), (2-855), (2-856), (2-857), (2-858), (2-859), (2-860), (2-861), (2-862), (2-863), (2-864), (2-865), (2-866), (2-867), (2-868), (2-869), (2-870), (2-871), (2-872), (2-873), (2-874), (2-875), (2-876), (2-877), (2-878), (2-879), (2-880), (2-881), (2-882), (2-883), (2-884), (2-885), (2-886), (2-887), (2-888), (2-889), (2-890), (2-891), (2-892), (2-893), (2-894), (2-895), (2-896), (2-897), (2-898), (2-899), (2-900), (2-901), (2-902), (2-903), (2-904), (2-905), (2-906), (2-907), (2-908), (2-909), (2-910), (2-911), (2-912), (2-913), (2-914), (2-915), (2-916), (2-917), (2-918), (2-919), (2-920), (2-921), (2-922), (2-923), (2-924), (2-925), (2-926), (2-927), (2-928), (2-929), (2-930), (2-931), (2-932), (2-933), (2-934), (2-935), (2-936), (2-937), (2-938), (2-939), (2-940), (2-941), (2-942), (2-943), (2-944), (2-945), (2-946), (2-947), (2-948), (2-949), (2-950), (2-951), (2-952), (2-953), (2-954), (2-955), (2-956), (2-957), (2-958), (2-959), (2-960), (2-961), (2-962), (2-963), (2-964), (2-965), (2-966), (2-967), (2-968), (2-969), (2-970), (2-971), (2-972), (2-973), (2-974), (2-975), (2-976), (2-977), (2-978), (2-979), (2-980), (2-981), (2-982), (2-983), (2-984), (2-985), (2-986), (2-987), (2-988), (2-989), (2-990), (2-991), (2-992), (2-993), (2-994), (2-995), (2-996), (2-997), (2-998), (2-999), (3-000).

B Timber strips

Timber strips are natural materials containing veins and/or natural differences. They will be colour and matching as provided to other and grain in their selection and installation. Timber strips are also subject to thermal expansion and contraction beyond the control of builder and Vendor. Natural timber that is used outdoors will become discoloured due to sunlight and rain. Thus, the cycle of maintenance on timber will need to be increased as required. Notwithstanding this, the Vendor shall remain fully responsible for the performance of its obligations under clause 9 and clause 17.

C Air-conditioning system

To ensure good working condition of the air-conditioning system, the system fan to be maintained and cleaned on a regular basis by the Purchaser. This includes the cleaning of filter, clearing of condenser pipe and changing of gas. The Purchaser shall be responsible for the maintenance of the air-conditioning system installed.

D Television and/or Internet Access

The Purchaser is liable to pay annual fee, subscription fee and such other fees for the television and/or internet service provider or any other relevant party or any relevant authority. The Vendor is not responsible for the maintenance of any of the said points for the service connection for these respective channels or for internet access.

E Mechanical, Electrical, Equipment, Finishes, Installations and Appliances
 The Vendor is liable to provide and install all mechanical, electrical, equipment, finishes, installations and appliances to be supplied shall be provided subject to Architect's selection and make available.

F Layout/Location of Wardrobes, Closets, Bar, Cell, Utility, Electrical Appliances and Fittings, Electrical Point, Television Point, Telephone Point, Door Swing Position, Door Swing Position and Floor Ceiling Board
 Layout/Location of wardrobe, kitchen cabinet, bar and units, electrical appliances and fittings, electrical point, television point, telephone point, door swing position and floor ceiling board is subject to Architect's final decision and design.

G Windows

When variations are given by the manufacturer and/or contractor and/or supplier of any of the equipment and/or appliances installed by the Vendor in the Unit, the Vendor will assign to the Purchaser such variations as the time when same possession of the Unit is delivered to the Purchaser. Notwithstanding this assignment, the Vendor shall remain fully responsible for the performance of its obligations under clause 9 and clause 17.

H Falsely-Ceiling

The false ceiling space provision allows for the optimal function and installation of lift, service, access panels as allowed for use of maintenance access to concealed M&E equipment for regular cleaning purposes. When removal of equipment is needed, ceiling work will be required. Location of false ceiling is subject to the Architect's site inspection and final design.

I Glass

Glass is manufactured material that is not 100% pure. Inevitable slight multiple imperfections may cause spontaneous glass breakage, which may occur at any time by all manufacturers. The Purchaser is recommended to take up home insurance covering glass breakage to cover this possible event. Notwithstanding this, the Vendor shall remain fully responsible for the performance of its obligations under clause 9 and clause 17.

J Wall

All wall finishes shall be terminated at false ceiling level. There will be no silicone works behind kitchen cabinets/walk-in pantry cabinets.

K Tiles

The standard tile size and tile surface finish cannot be perfect, and subject to acceptable range described in Singapore Standard SS485:2006.

L Mechanical Ventilation System

Mechanical Ventilation fans and ducting are provided to collect and kitchen which are not naturally ventilated.

To ensure good working condition of the mechanical ventilation system, the mechanical ventilation system for the exhaust system within internal ventilation and kitchen (where applicable) will be maintained by the Purchaser on a regular basis.

M Wetroom Income Committee at Common Area
 Wetroom income connection provision is designated common area such as children's gym and pool deck, subject to subscription of access by the Management Corporation with the relevant income source as provided.

A special development by

A joint venture of



Co. Reg No. 201807791E



Co. Reg No. 19698592E



Co. Reg No. 19698592E



Co. Reg No. 19698592E

Developer: Mount V Development Pte. Ltd. • Developer's License No.: CDE1 • Tenure of Land: Leasehold (99 years lease commencing from 16 Apr 2022) • Lot No.: Lot 1479C MK 24 At Mount View Road • Approved RP No.: A2791-40007-2012-0741 dated 04 Dec 2012 / A2791-40005-2012-0741 dated 23 Jan 2013 • Date of Notice of Vacant Possession under the S&P Agreement: No later than 1 Oct 2018 • Expiry date of legal completion: No later than 1 Oct 2021 or 3 years after the date of delivery of vacant possession, whichever is earlier • Documentation: Substantive Mortgage (if any) will be discharged in accordance with the Housing Development (Project Account) Rules.

While every reasonable care has been taken in preparing the brochures, the developer cannot be held responsible for any inaccuracies. All statements are believed to be correct but are not to be regarded as statement or representation of fact. Visual representations, photographs and renderings are intended to portray only representative of the development. All information and specifications are correct as the time of print and are subject to changes may be required and cannot form part of an offer or contract.

Making dream homes a reality.

Hong Leong Holdings Limited (HLHL) was established in 1968 as the privately-held property development and investment arm of the Hong Leong Group. As one of the pioneers of the real estate scene in Singapore, HLHL has since emerged as a major player in the property market. To date, it has developed over 50 residential properties, including a range of mid- to high-end residential projects in some of the country's most coveted neighbourhoods.

As a forward-looking developer that continues to pursue improvement and expansion while maintaining its high design, customer service and sustainability standards, HLHL takes pride in being responsible for some of the most distinctive and iconic residential developments in Singapore. Some of the company's well-received projects in the past few years include Sage, The Meyerzie, The Tate Residences and Auko. In addition, HLHL has also been involved in a number of high-profile joint ventures, both at home and abroad. As a developer of choice with several exciting developments lined up, its efforts continue to define the concept of a dream home, and to turn these visions into concrete reality.



Sage
• Nankin Road • 33 units
• TOP: Jul 2012 • CSC: Nov 2012



The Meyerzie (under construction)
• Meyer Road • 299 units
Expected Date of Vacant Possession No later than 1 Oct 2016



The Tate Residences
• Chuanee Road • 85 units
• TOP: Oct 2009 • CSC: Jul 2010



Auko
• Meyer Road • 106 units
• TOP: Aug 2010 • CSC: Dec 2010

