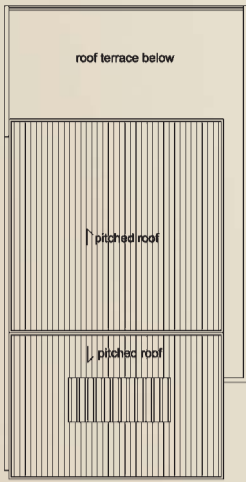
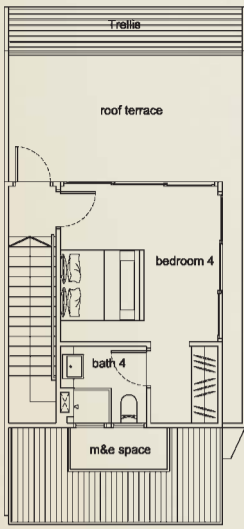


HOUSE NO. 19

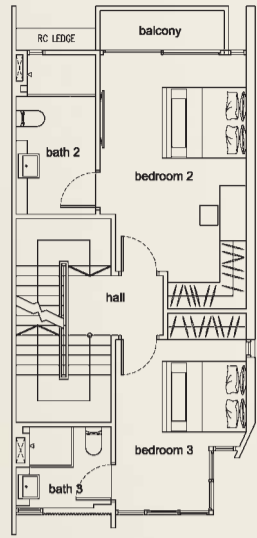
STRATA AREA = 378 SQM / 4,069 SQFT
(Inclusive of void, RC ledge and metal roof)



ROOF



ATTIC



3rd STOREY

HOUSE NO. 21

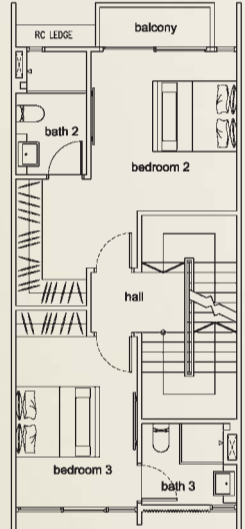
STRATA AREA = 399 SQM / 4,295 SQFT
(Inclusive of void, RC ledge and metal roof)



ROOF



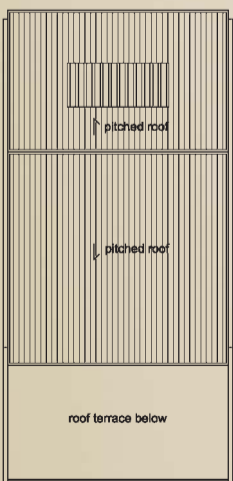
ATTIC



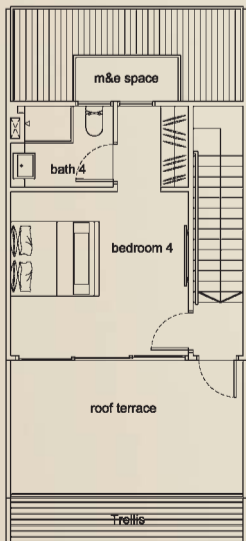
3rd STOREY

HOUSE NO. 23

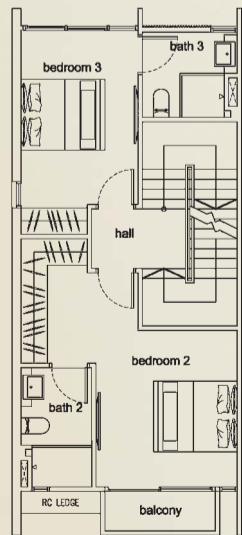
STRATA AREA = 377 SQM / 4,058 SQFT
(Inclusive of void, RC ledge and metal roof)



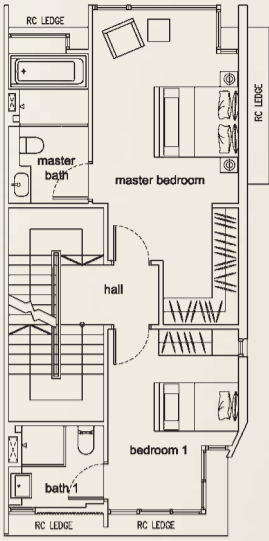
ROOF



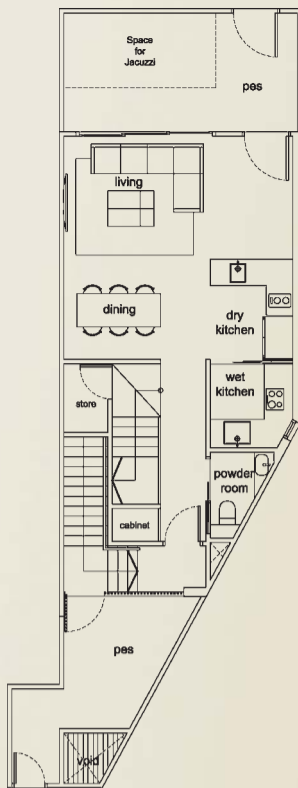
ATTIC



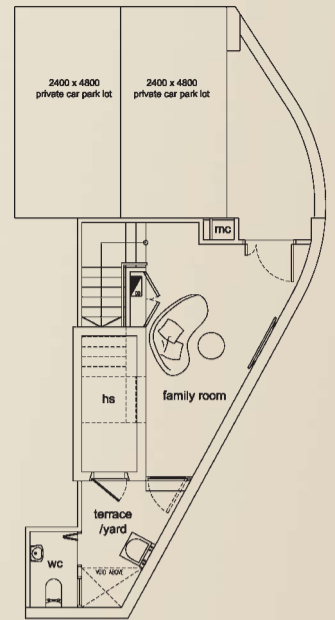
3rd STOREY



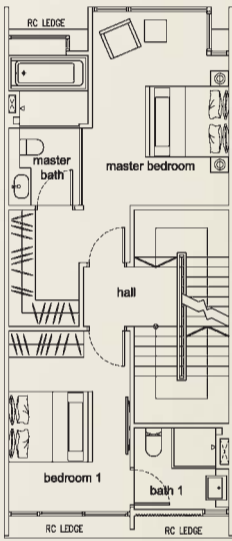
2nd STOREY



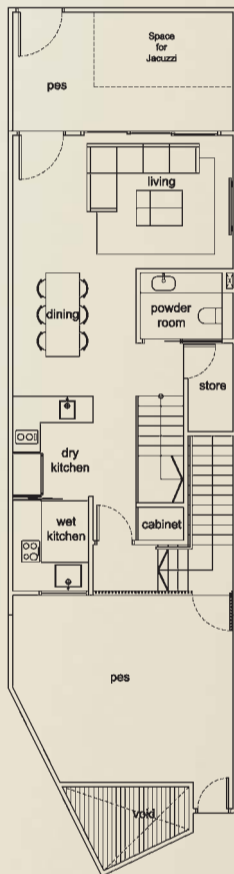
1st STOREY



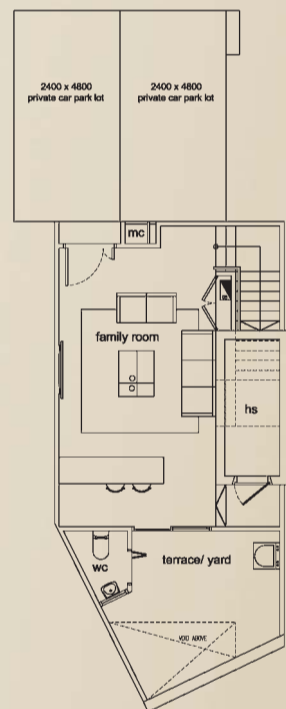
BASEMENT



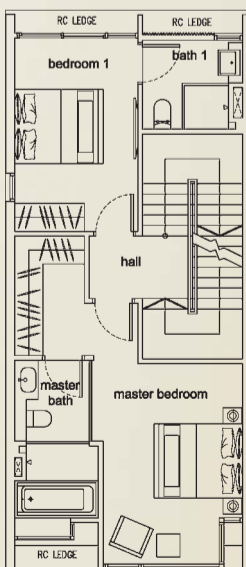
2nd STOREY



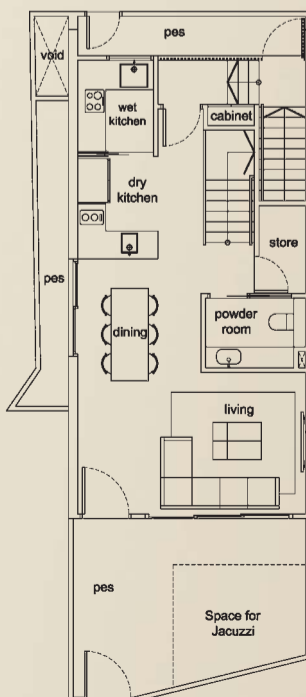
1st STOREY



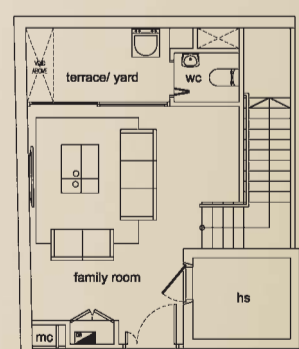
BASEMENT



2nd STOREY



1st STOREY

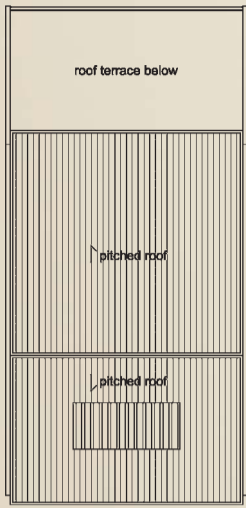


BASEMENT

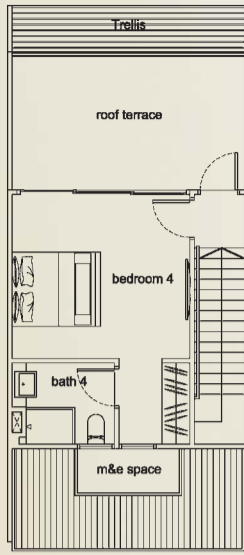


HOUSE NO. 19A

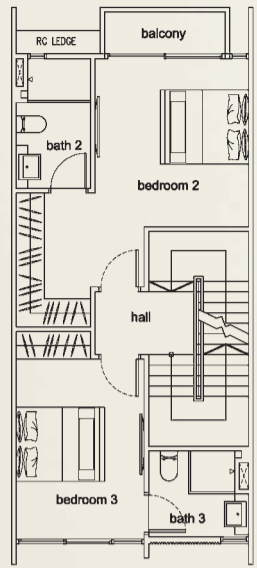
STRATA AREA = 384 SQM / 4,133 SQFT
(Inclusive of void, RC ledge and metal roof)



ROOF



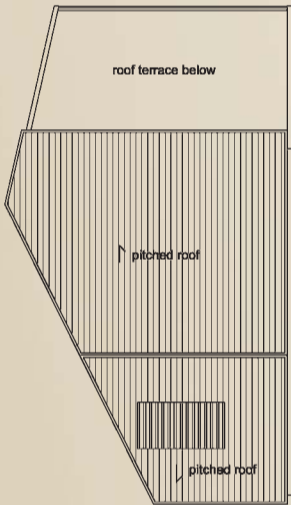
ATTIC



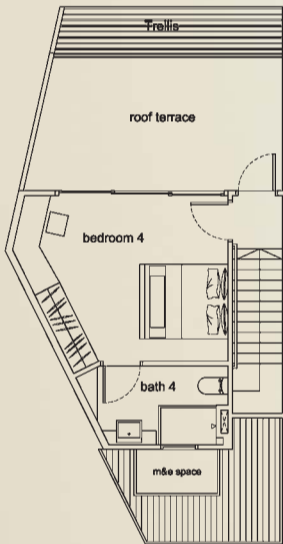
3rd STOREY

HOUSE NO. 21A

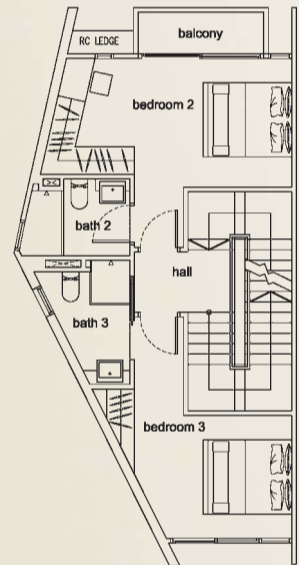
STRATA AREA = 371 SQM / 3,993 SQFT
(Inclusive of void, RC ledge and metal roof)



ROOF



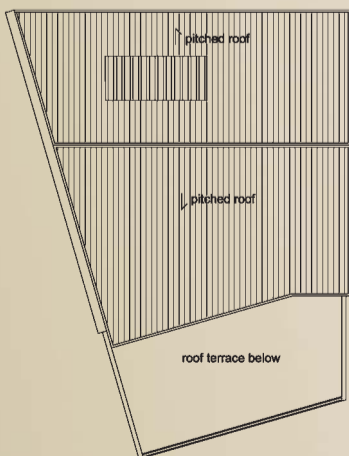
ATTIC



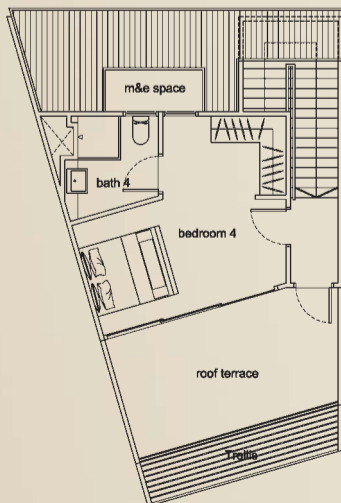
3rd STOREY

HOUSE NO. 23A

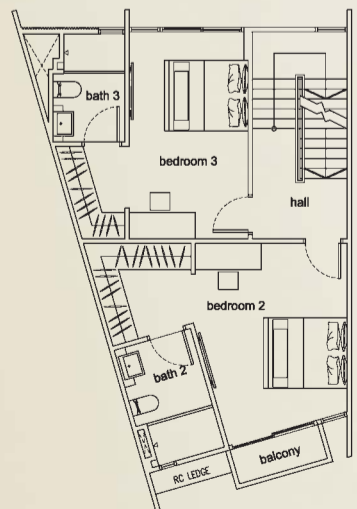
STRATA AREA = 381 SQM / 4,101 SQFT
(Inclusive of void, RC ledge and metal roof)



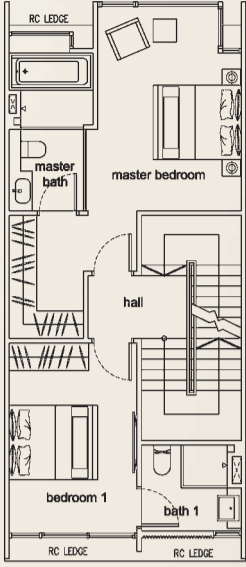
ROOF



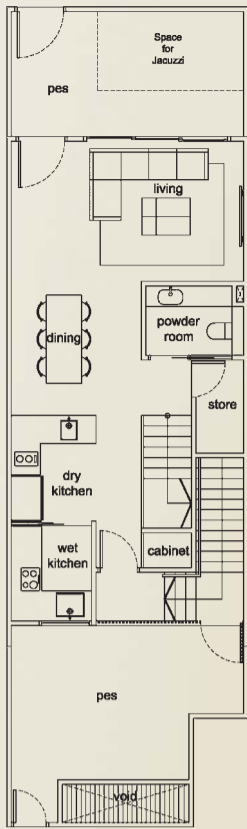
ATTIC



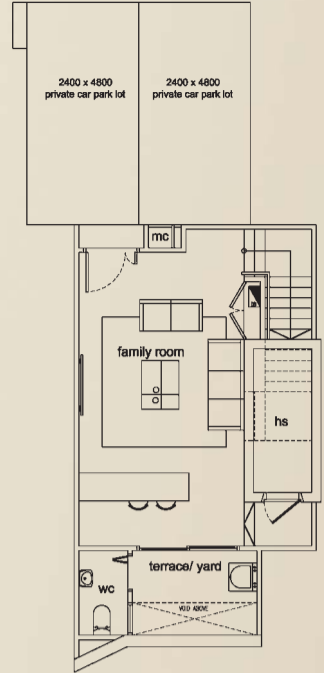
3rd STOREY



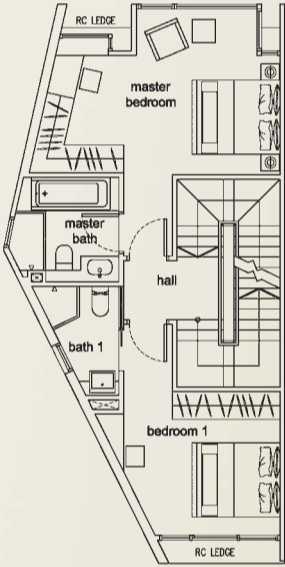
2nd STOREY



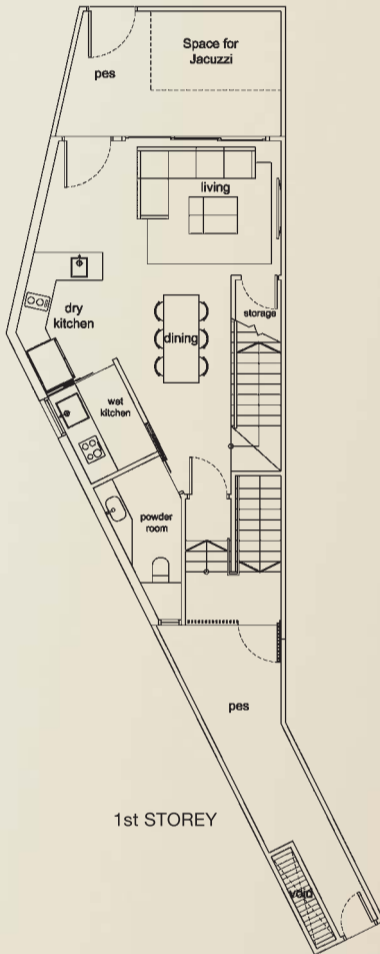
1st STOREY



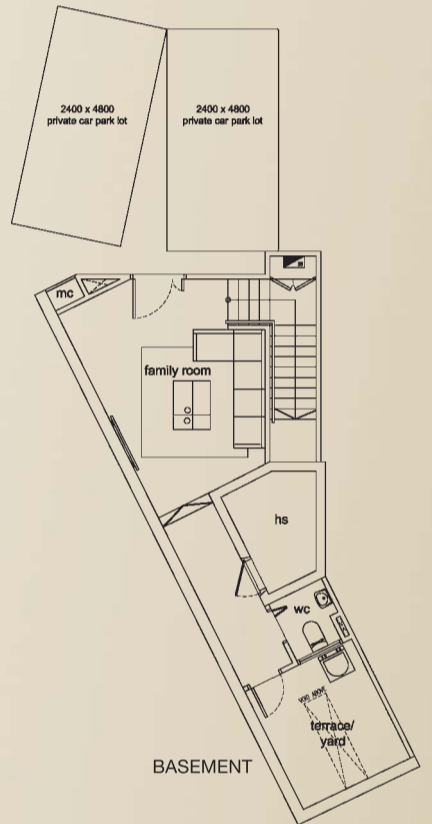
BASEMENT



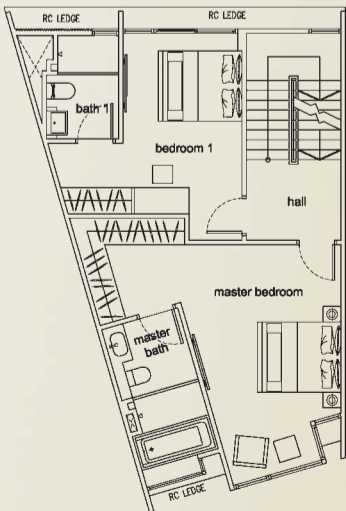
2nd STOREY



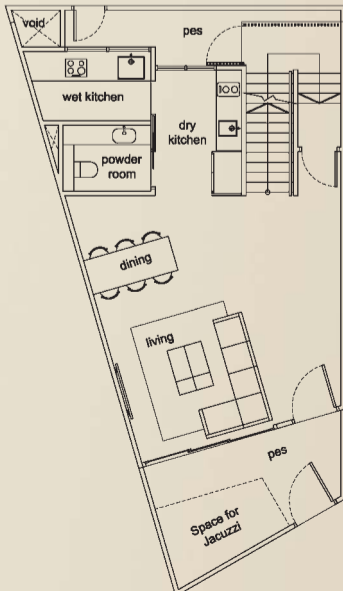
1st STOREY



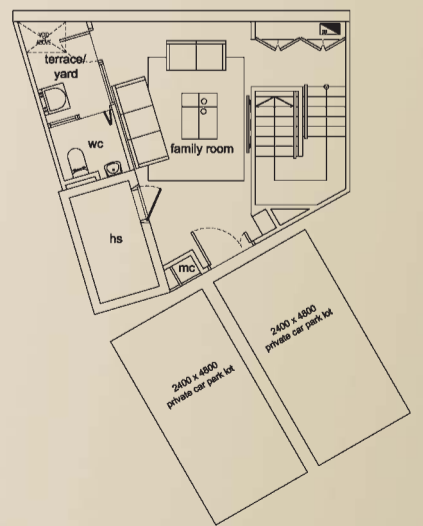
BASEMENT



2nd STOREY



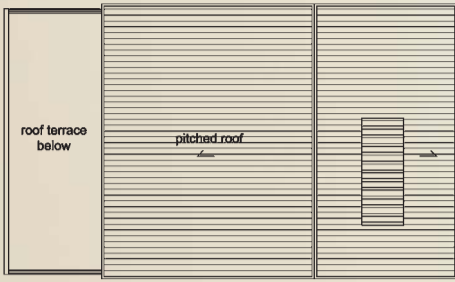
1st STOREY



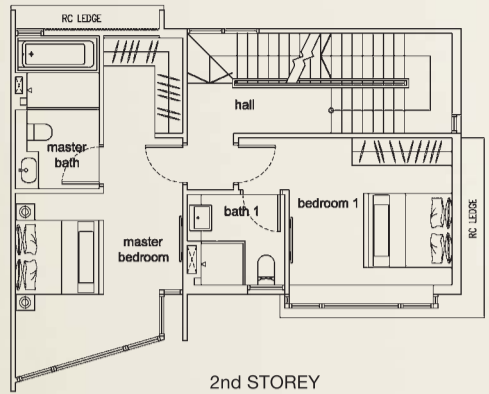
BASEMENT

HOUSE NO. 25

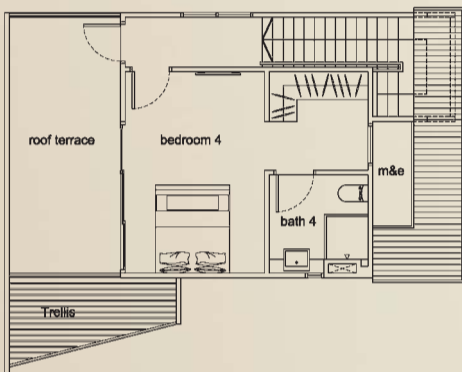
STRATA AREA = 403 SQM / 4,338 SQFT
(Inclusive of void, RC ledge and metal roof)



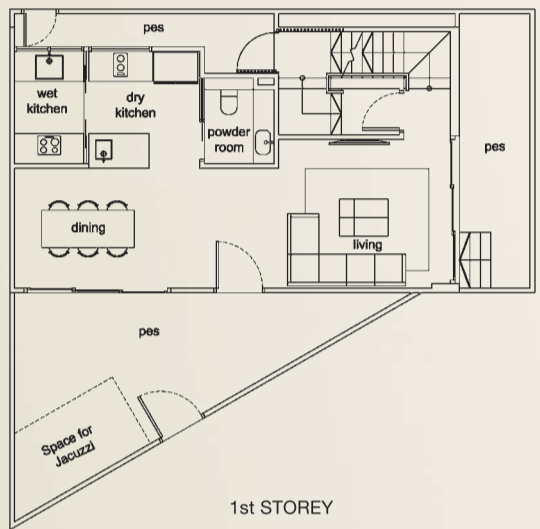
ROOF



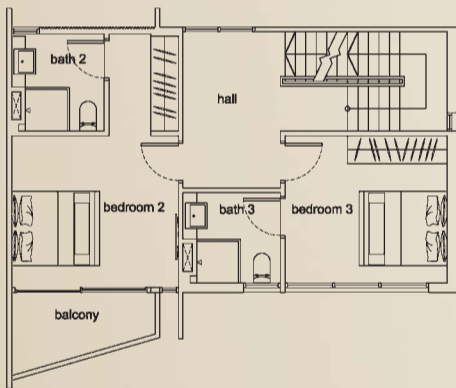
2nd STOREY



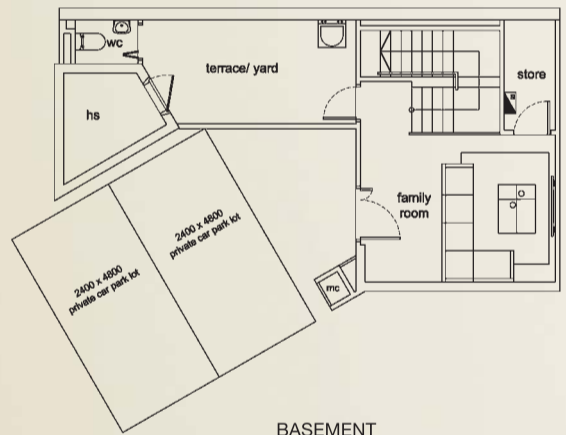
ATTIC



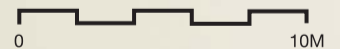
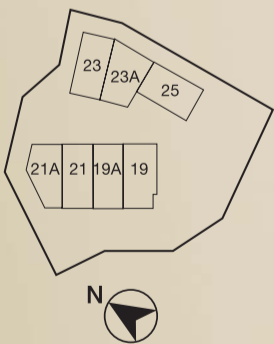
1st STOREY



3rd STOREY



BASEMENT



All plans are for visual representation only and are subject to amendments as approved or required by the building and construction Authority and/or the relevant authorities. Floor areas indicated are approximate measurement and subject to final survey.

All information, specifications and statements herein shall not be treated to form part of an offer or contract. Floor plans are subject to amendments as may be required by the relevant authorities. Visual representations, illustrations, photographs, art renderings and other graphic representations and references, not limited to landscape and furniture, are intended to portray only artistic impressions of the development and cannot be regarded as representations of fact. No part of the materials shall constitute a representation or warranty. All plans, information and specifications are current at the time of press and are subject to change as may be required and cannot form part of an offer or contract. The developer reserves the rights to modify any part or parts of the building prior to completion as directed or approved by the relevant authority. Floor areas are only approximate measurements and subject to final survey.

The Sale and Purchase Agreement shall form the entire agreement between the Developer and Purchaser and shall supersede all statements, representations or promise made prior to the signing of the Sale and Purchase Agreement and shall in no way be modified by any statements, representations or promise made by the Developer or the Marketing Agents.