

Q BAY : DIAGRAMMATIC UNIT DISTRIBUTION CHART

BLOCK 17 (TRIO)				
UNIT LEVEL	38	39	40	41
16	TR-CT	TR-DT	TR-BST	TR-BST
15	TR-C	TR-D	TR-BS	TR-BS
14	TR-C	TR-D	TR-BS	TR-BS
13	TR-C	TR-D	TR-BS	TR-BS
12	TR-C	TR-D	TR-BS	TR-BS
11	TR-C	TR-D	TR-BS	TR-BS
10	TR-C	TR-D	TR-BS	TR-BS
9	TR-C	TR-D	TR-BS	TR-BS
8	TR-C	TR-D	TR-BS	TR-BS
7	TR-C	TR-D	TR-BS	TR-BS
6	TR-C	TR-D	TR-BS	TR-BS
5	TR-C	TR-D	TR-BS	TR-BS
4	TR-C	TR-D	TR-BS	TR-BS
3	TR-C	TR-D	TR-BS	TR-BS
2	TR-Cp1	TR-Dp	TR-BS	TR-BS
1			TR-BSp	TR-BSp

BLOCK 15 (TRIO)				
UNIT LEVEL	34	35	36	37
16	TR-CT	TR-CT	TR-CT	TR-BST
15	TR-C	TR-C	TR-C	TR-BS
14	TR-C	TR-C	TR-C	TR-BS
13	TR-C	TR-C	TR-C	TR-BS
12	TR-C	TR-C	TR-C	TR-BS
11	TR-C	TR-C	TR-C	TR-BS
10	TR-C	TR-C	TR-C	TR-BS
9	TR-C	TR-C	TR-C	TR-BS
8	TR-C	TR-C	TR-C	TR-BS
7	TR-C	TR-C	TR-C	TR-BS
6	TR-C	TR-C	TR-C	TR-BS
5	TR-C	TR-C	TR-C	TR-BS
4	TR-C	TR-C	TR-C	TR-BS
3	TR-C	TR-C	TR-C	TR-BS
2	TR-Cp1	TR-Cp1	TR-C	TR-BS
1			TR-Cp	TR-BSp

BLOCK 11 (CONDO)				
UNIT LEVEL	30	31	32	33
16	Cc1T	ET	Cc2T	Cc2T
15	Cc1	E	Cc2	Cc2
14	Cc1	E	Cc2	Cc2
13	Cc1	E	Cc2	Cc2
12	Cc1	E	Cc2	Cc2
11	Cc1	E	Cc2	Cc2
10	Cc1	E	Cc2	Cc2
9	Cc1	E	Cc2	Cc2
8	Cc1	E	Cc2	Cc2
7	Cc1	E	Cc2	Cc2
6	Cc1	E	Cc2	Cc2
5	Cc1	E	Cc2	Cc2
4	Cc1	E	Cc2	Cc2
3	Cc1	E	Cc2	Cc2
2	Cc1p	Ep	Cc2	Cc2
1			Cc2p	Cc2p

BLOCK 13 (CLUBHOUSE)		
UNIT LEVEL	42	43
16		
15		
14		
13		
12		
11		
10		
9		
8		
7		
6		
5		
4		
3		
2		
1	SHOP 1	SHOP 2

BLOCK 5 (CONDO)				
UNIT LEVEL	18	19	20	21
16	VH-CaT	VH-CT	VH-CT	VH-CT
15	VH-Ca	VH-C	VH-C	VH-C
14	VH-Ca	VH-C	VH-C	VH-C
13	VH-Ca	VH-C	VH-C	VH-C
12	VH-Ca	VH-C	VH-C	VH-C
11	VH-Ca	VH-C	VH-C	VH-C
10	VH-Ca	VH-C	VH-C	VH-C
9	VH-Ca	VH-C	VH-C	VH-C
8	VH-Ca	VH-C	VH-C	VH-C
7	VH-Ca	VH-C	VH-C	VH-C
6	VH-Ca	VH-C	VH-C	VH-C
5	VH-Ca	VH-C	VH-C	VH-C
4	VH-Ca	VH-C	VH-C	VH-C
3	VH-Ca	VH-C	VH-C	VH-C
2	VH-Cap1	VH-Cp3	VH-C	
1			VH-Cp	

BLOCK 7 (CONDO)				
UNIT LEVEL	22	23	24	25
16	VH-CaT	VH-DT	VH-DT	VH-CT
15	VH-Ca	VH-D	VH-D	VH-C
14	VH-Ca	VH-D	VH-D	VH-C
13	VH-Ca	VH-D	VH-D	VH-C
12	VH-Ca	VH-D	VH-D	VH-C
11	VH-Ca	VH-D	VH-D	VH-C
10	VH-Ca	VH-D	VH-D	VH-C
9	VH-Ca	VH-D	VH-D	VH-C
8	VH-Ca	VH-D	VH-D	VH-C
7	VH-Ca	VH-D	VH-D	VH-C
6	VH-Ca	VH-D	VH-D	VH-C
5	VH-Ca	VH-D	VH-D	VH-C
4	VH-Ca	VH-D	VH-D	VH-C
3	VH-Ca	VH-D	VH-D	VH-C
2	VH-Cap	VH-Dp	VH-Dp1	VH-Cp1
1				

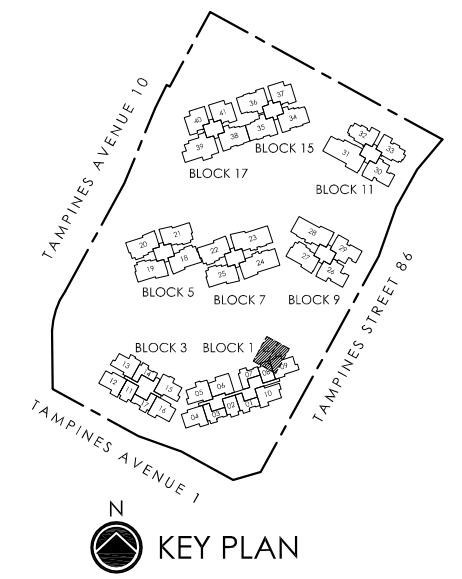
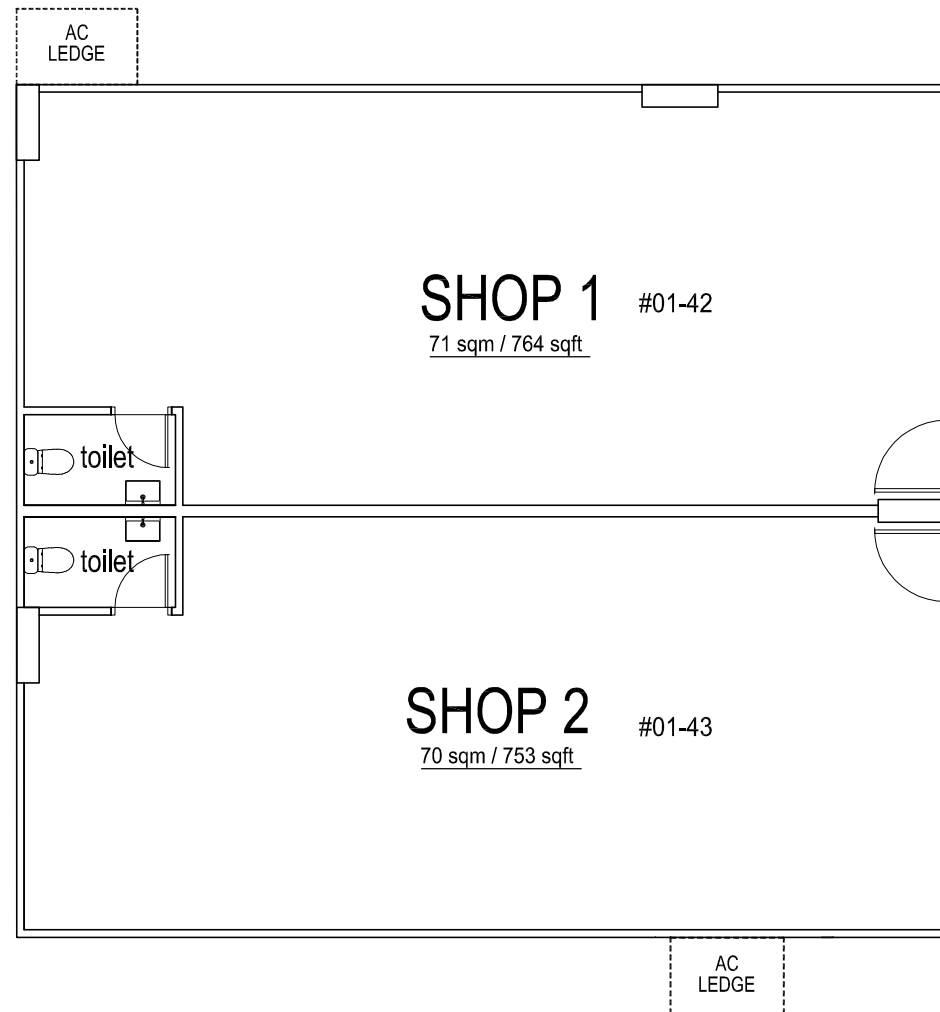
BLOCK 9 (CONDO)				
UNIT LEVEL	26	27	28	29
16	Cc1T	VH-CT	VH-DT	Cc1T
15	Cc1	VH-C	VH-D	Cc1
14	Cc1	VH-C	VH-D	Cc1
13	Cc1	VH-C	VH-D	Cc1
12	Cc1	VH-C	VH-D	Cc1
11	Cc1	VH-C	VH-D	Cc1
10	Cc1	VH-C	VH-D	Cc1
9	Cc1	VH-C	VH-D	Cc1
8	Cc1	VH-C	VH-D	Cc1
7	Cc1	VH-C	VH-D	Cc1
6	Cc1	VH-C	VH-D	Cc1
5	Cc1	VH-C	VH-D	Cc1
4	Cc1	VH-C	VH-D	Cc1
3	Cc1	VH-C	VH-D	Cc1
2	Cc1p	VH-Cp2	VH-Dp	Cc1p
1				

BLOCK 3 (SUITES)							
UNIT LEVEL	11	12	13	14	15	16	17
16	AST	BT	BST	AT	BST1	BT1	AT
15	AS	B	BS	A	BS	B	A
14	AS	B	BS	A	BS	B	A
13	AS	B	BS	A	BS	B	A
12	AS	B	BS	A	BS	B	A
11	AS	B	BS	A	BS	B	A
10	AS	B	BS	A	BS	B	A
9	AS	B	BS	A	BS	B	A
8	AS	B	BS	A	BS	B	A
7	AS	B	BS	A	BS	B	A
6	AS	B	BS	A	BS	B	A
5	AS	B	BS	A	BS	B	A
4	AS	B	BS	A	BS	B	A
3	AS	B	BS	A	BS	B	A
2	AS	B	BSp1	Ap1	BSp	B	A
1	ASp	B-bp1				B-ap	Ap

BLOCK 1 (SUITES)										
UNIT LEVEL	1	2	3	4	5	6	7	8	9	10
16	AT	AST	AT	BT	BST1	B-bT	AT	AST	BST	B-aT
15	A	AS	A	B	BS	B-b	A	AS	BS	B-a
14	A	AS	A	B	BS	B-b	A	AS	BS	B-a
13	A	AS	A	B	BS	B-b	A	AS	BS	B-a
12	A	AS	A	B	BS	B-b	A	AS	BS	B-a
11	A	AS	A	B	BS	B-b	A	AS	BS	B-a
10	A	AS	A	B	BS	B-b	A	AS	BS	B-a
9	A	AS	A	B	BS	B-b	A	AS	BS	B-a
8	A	AS	A	B	BS	B-b	A	AS	BS	B-a
7	A	AS	A	B	BS	B-b	A	AS	BS	B-a
6	A	AS	A	B	BS	B-b	A	AS	BS	B-a
5	A	AS	A	B	BS	B-b	A	AS	BS	B-a
4	A	AS	A	B	BS	B-b	A	AS	BS	B-a
3	A	AS	A	B	BS	B-b	A	AS	BS	B-a
2	A	AS	A	B	BSp2	B-bp	Ap2	ASp1	BSp3	B-a
1	Ap	ASp	Ap	B-ap1						B-ap1

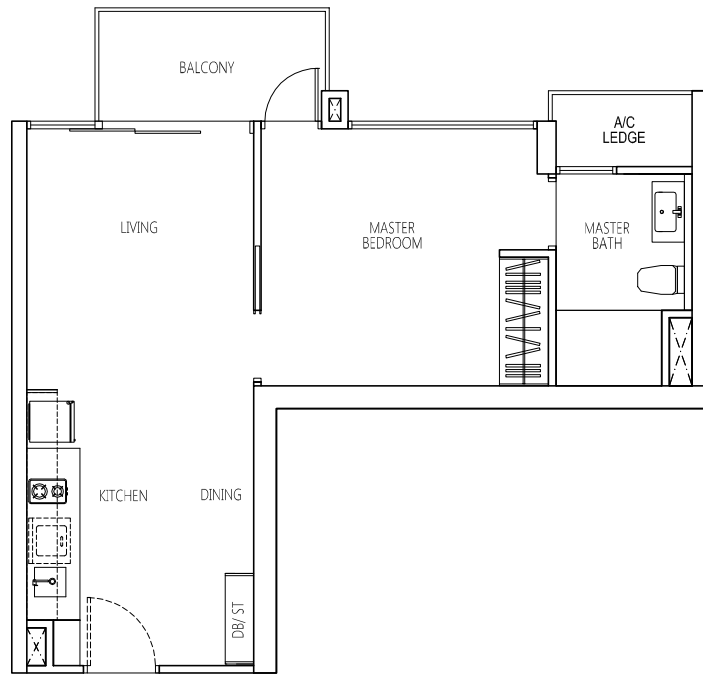
Q Bay Shops

DATE OF ISSUE
04 JAN 2013



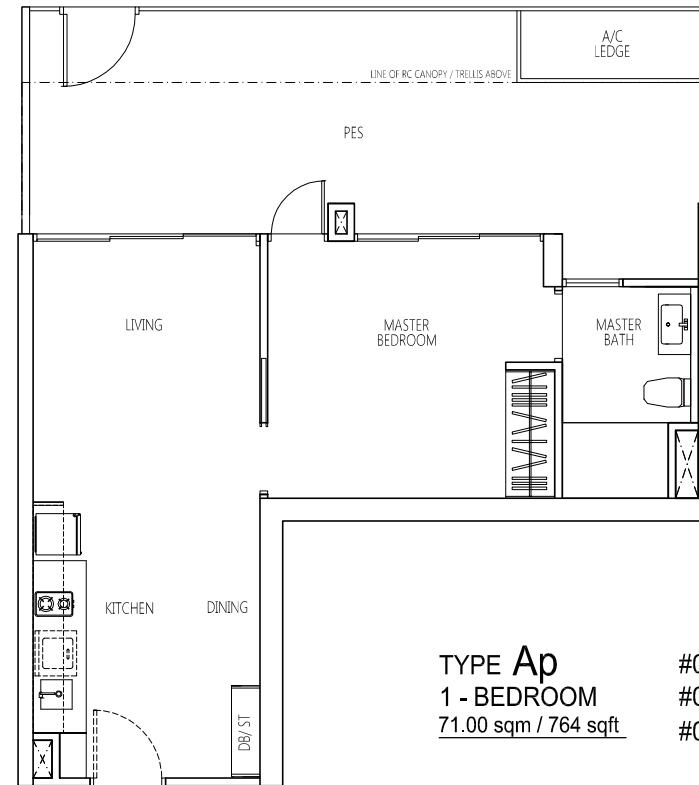
Plans are subject to any amendment as may be approved by the relevant authorities. All floor areas are approximate and are subject to final survey.





TYPE A
1 - BEDROOM
49.00 sqm / 527 sqft

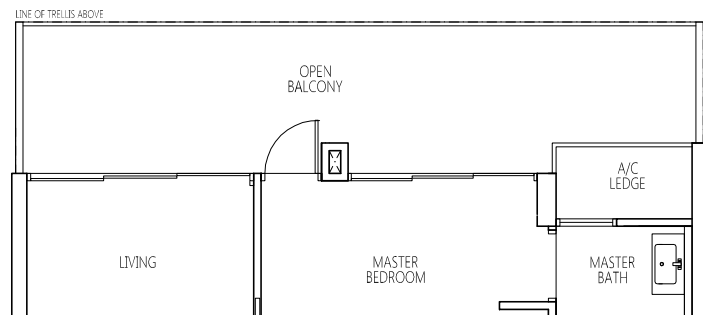
- #02-01 TO #15-01 (mirror unit)
- #02-03 TO #15-03 (mirror unit)
- #03-07 TO #15-07
- #03-14 TO #15-14
- #02-17 TO #15-17



TYPE Ap
1 - BEDROOM
71.00 sqm / 764 sqft

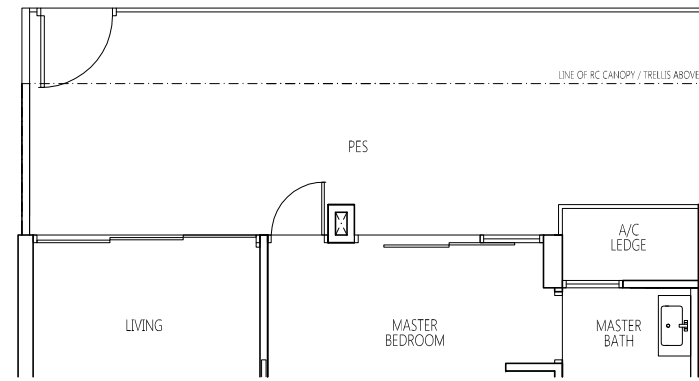
- #01-01 (mirror unit)
- #01-03 (mirror unit)
- #01-17

HIGH CEILING
HIGH CEILING
HIGH CEILING



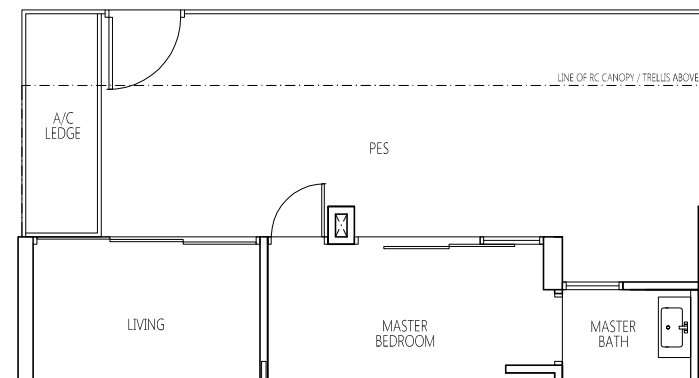
TYPE AT
1 - BEDROOM
62.00 sqm / 667 sqft

- #16-01 (mirror unit)
- #16-03 (mirror unit)
- #16-07
- #16-14
- #16-17



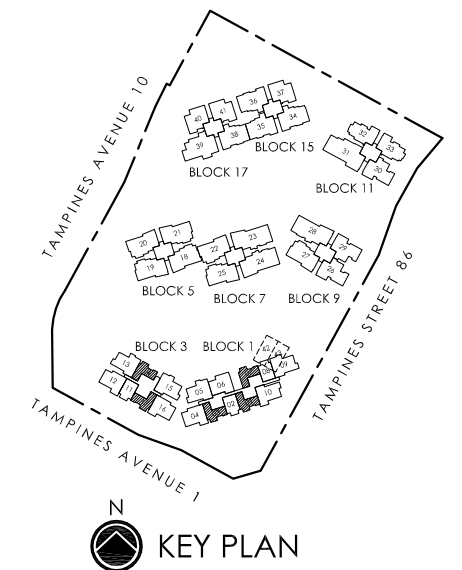
TYPE Ap1
1 - BEDROOM
71.00 sqm / 764 sqft

#02-14



TYPE Ap2
1 - BEDROOM
71.00 sqm / 764 sqft

#02-07

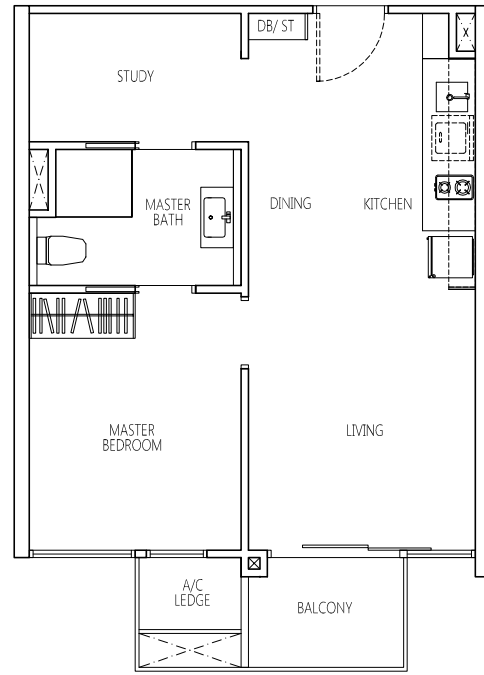


KEY PLAN



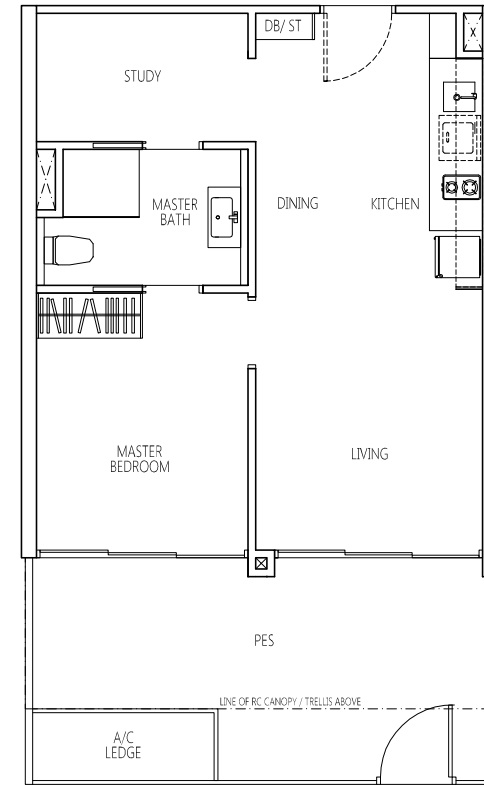
Plans are subject to any amendment as may be approved by the relevant authorities. All floor areas are approximate and are subject to final survey.

DATE OF ISSUE
04 JAN 2013



TYPE AS
1 - BEDROOM + STUDY
48.00 sqm / 517 sqft

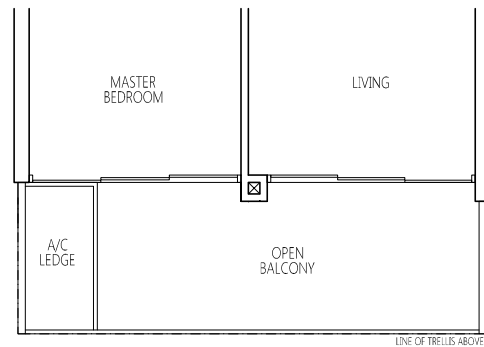
#02-02 TO #15-02
#03-08 TO #15-08 (mirror unit)
#02-11 TO #15-11 (mirror unit)



TYPE ASp
1 - BEDROOM + STUDY
62.00 sqm / 667 sqft

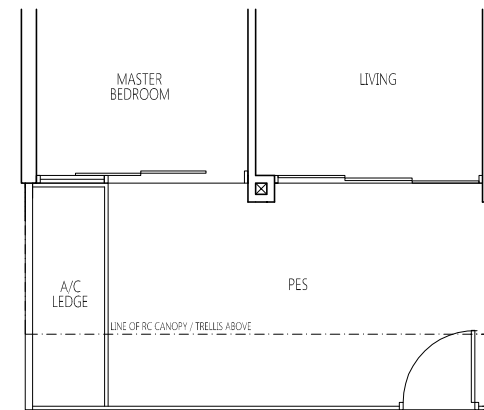
#01-02
#01-11 (mirror unit)

HIGH CEILING
HIGH CEILING



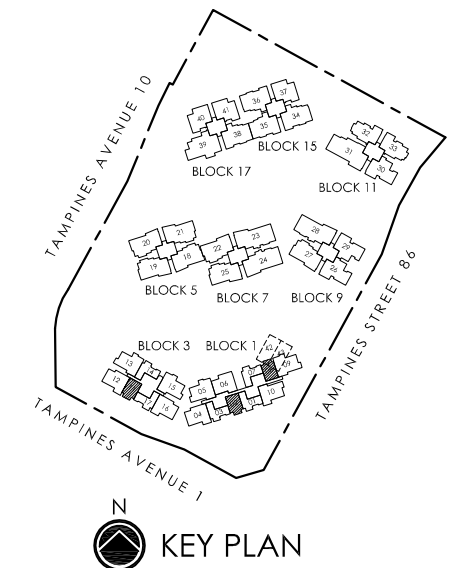
TYPE AST
1 - BEDROOM + STUDY
56.00 sqm / 603 sqft

#16-02
#16-08 (mirror unit)
#16-11 (mirror unit)



TYPE ASp1
1 - BEDROOM + STUDY
62.00 sqm / 667 sqft

#02-08 (mirror unit)

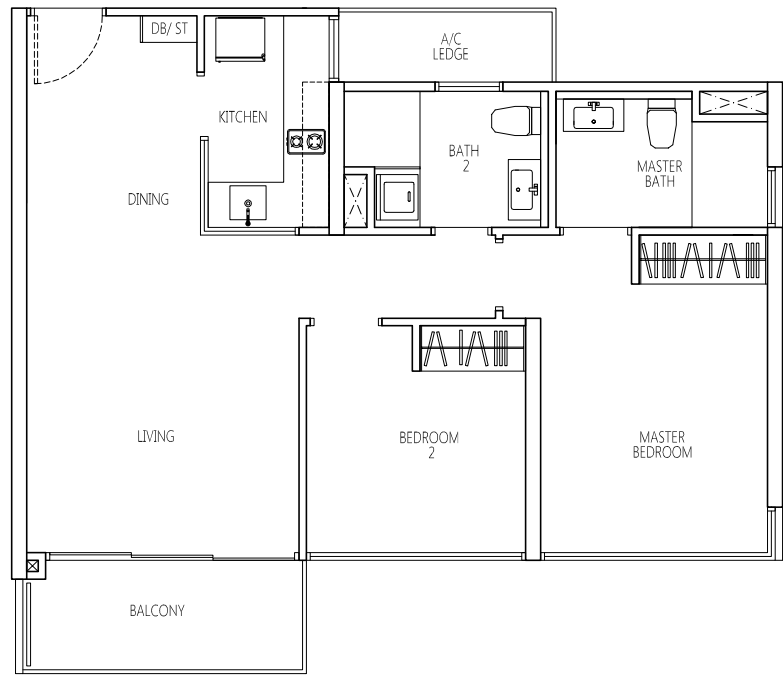


N
KEY PLAN



Plans are subject to any amendment as may be approved by the relevant authorities. All floor areas are approximate and are subject to final survey.

DATE OF ISSUE
04 JAN 2013



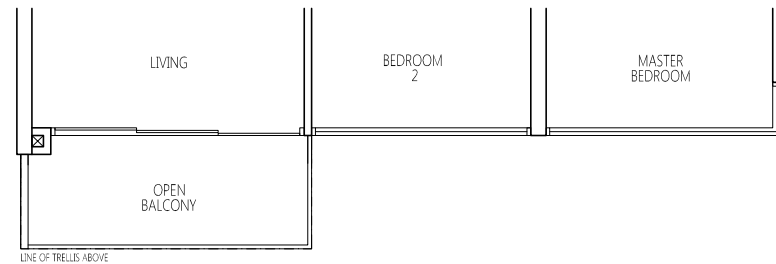
TYPE B
2 - BEDROOM
74.00 sqm / 797 sqft

#02-04 TO #15-04 (mirror unit)
#02-12 TO #15-12 (mirror unit)
#02-16 TO #15-16



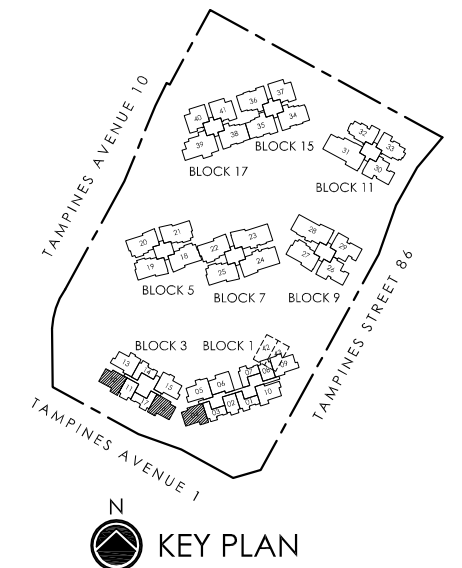
TYPE BT
2 - BEDROOM
85.00 sqm / 915 sqft

#16-04 (mirror unit)
#16-12 (mirror unit)



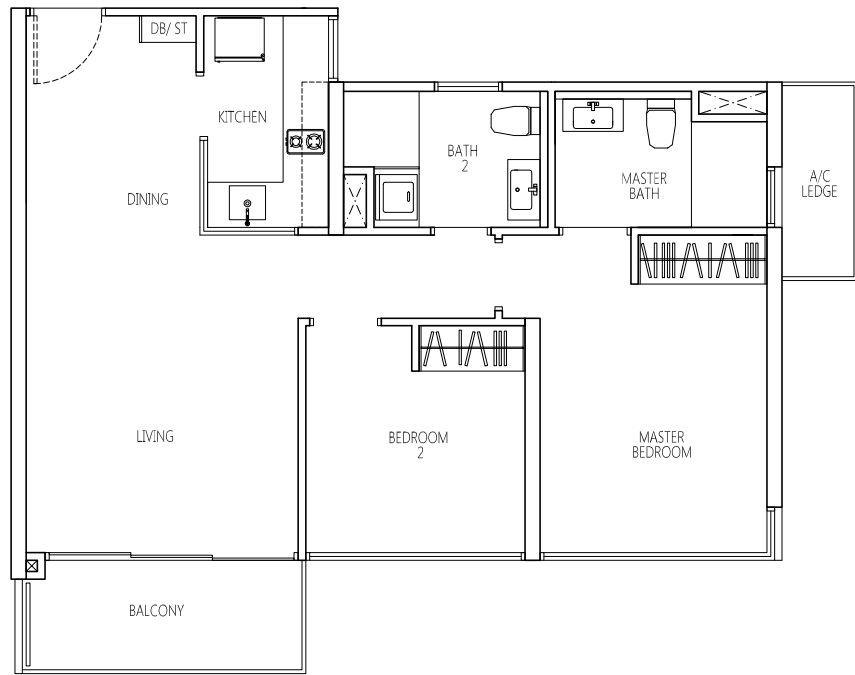
TYPE BT1
2 - BEDROOM
74.00 sqm / 797 sqft

#16-16



Plans are subject to any amendment as may be approved by the relevant authorities. All floor areas are approximate and are subject to final survey.

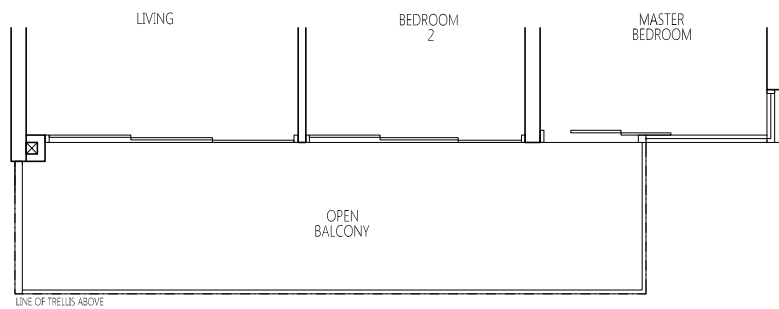
DATE OF ISSUE
04 JAN 2013



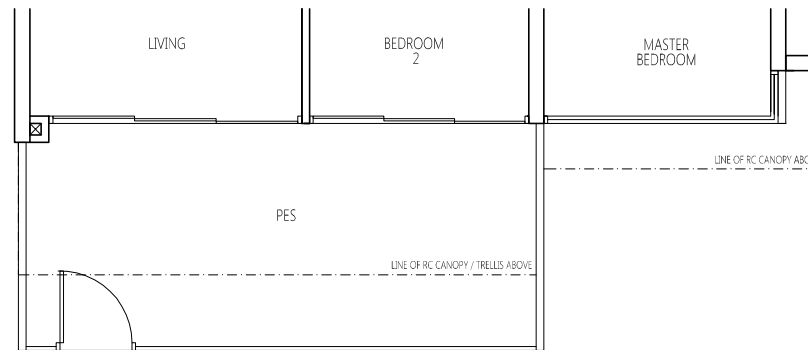
TYPE B-a #02-10 TO #15-10
2 - BEDROOM
74.00 sqm / 797 sqft



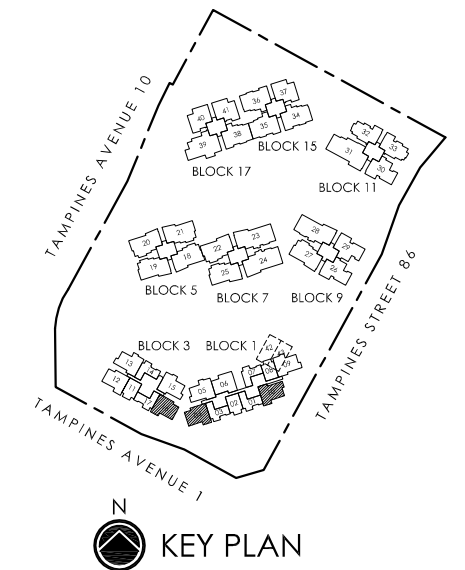
TYPE B-ap #01-16 **HIGH CEILING**
2 - BEDROOM
98.00 sqm / 1055 sqft



TYPE B-aT #16-10
2 - BEDROOM
85.00 sqm / 915 sqft

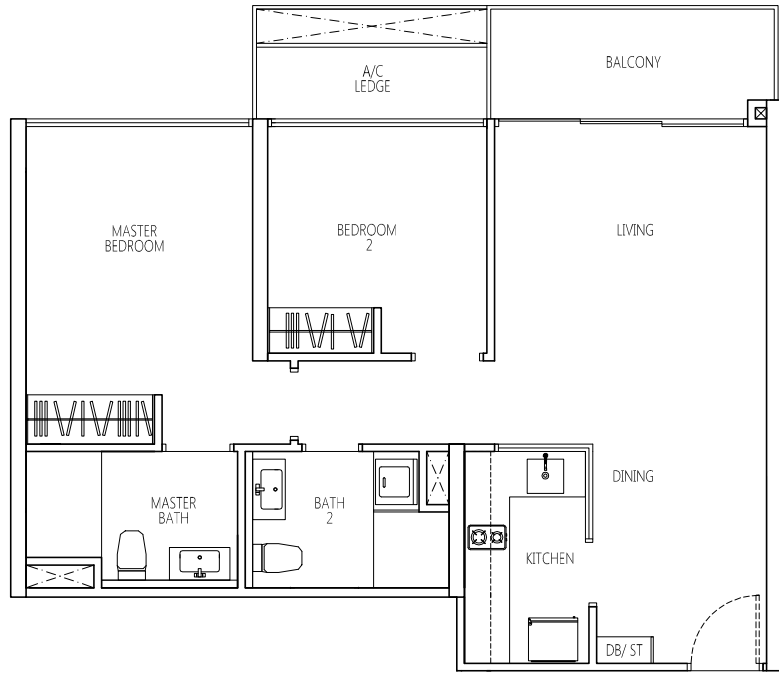


TYPE B-ap1 #01-04 (mirror unit) #01-10 **HIGH CEILING**
2 - BEDROOM
89.00 sqm / 958 sqft

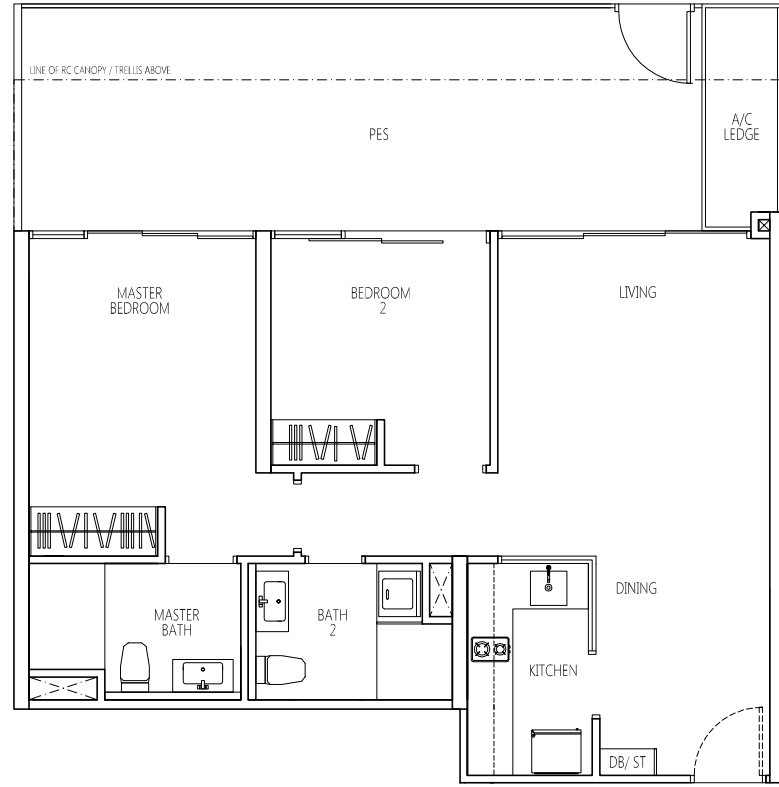


Plans are subject to any amendment as may be approved by the relevant authorities. All floor areas are approximate and are subject to final survey.

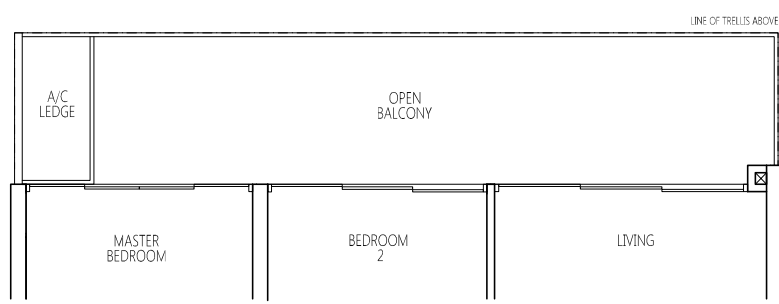
DATE OF ISSUE
04 JAN 2013



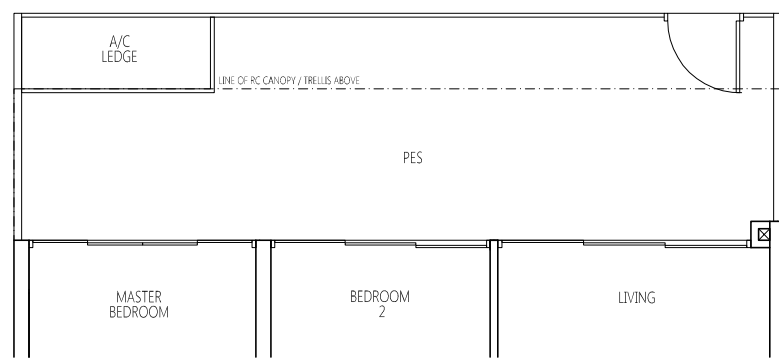
TYPE B-b #03-06 TO #15-06
2 - BEDROOM
74.00 sqm / 797 sqft



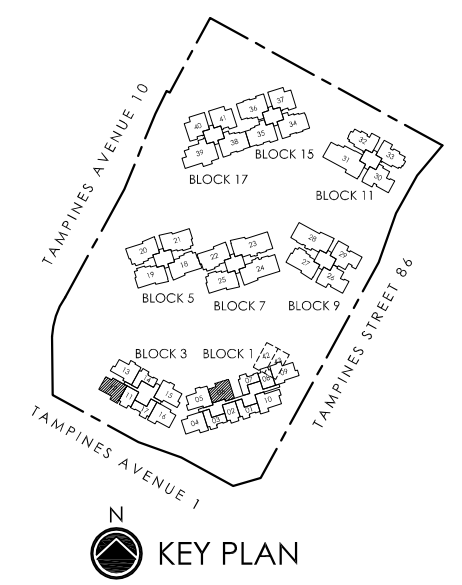
TYPE B-bp #02-06
2 - BEDROOM
96.00 sqm / 1033 sqft



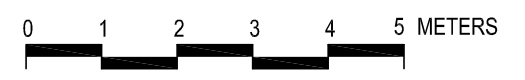
TYPE B-bT #16-06
2 - BEDROOM
86.00 sqm / 926 sqft



TYPE B-bp1 #01-12 (mirror unit) **HIGH CEILING**
2 - BEDROOM
96.00 sqm / 1033 sqft



KEY PLAN



Plans are subject to any amendment as may be approved by the relevant authorities. All floor areas are approximate and are subject to final survey.

DATE OF ISSUE
04 JAN 2013



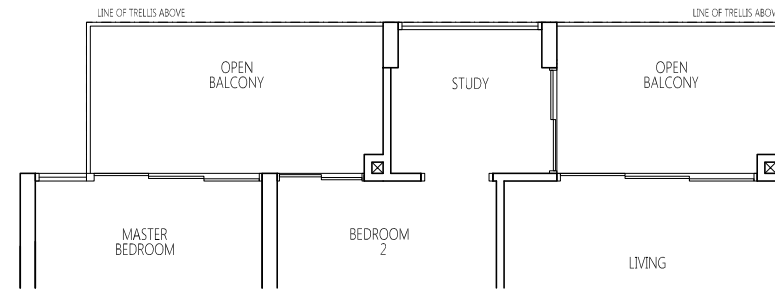
TYPE BS
2 - BEDROOM +STUDY
77.00 sqm / 829 sqft

#03-05 TO #15-05
#03-09 TO #15-09 (mirror unit)
#03-13 TO #15-13
#03-15 TO #15-15 (mirror unit)



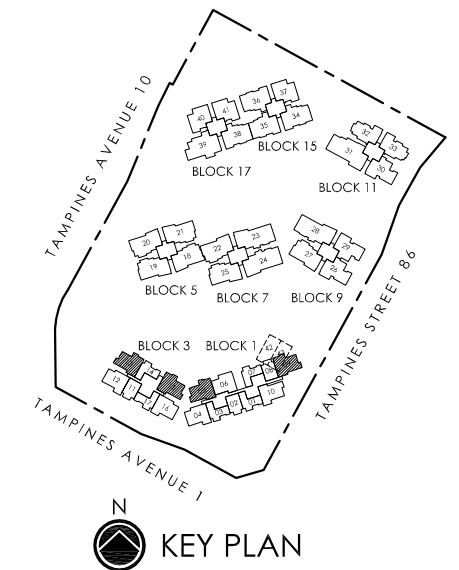
TYPE BST
2 - BEDROOM +STUDY
88.00 sqm / 947 sqft

#16-09 (mirror unit)
#16-13



TYPE BST1
2 - BEDROOM +STUDY
87.00 sqm / 936 sqft

#16-05
#16-15 (mirror unit)



KEY PLAN



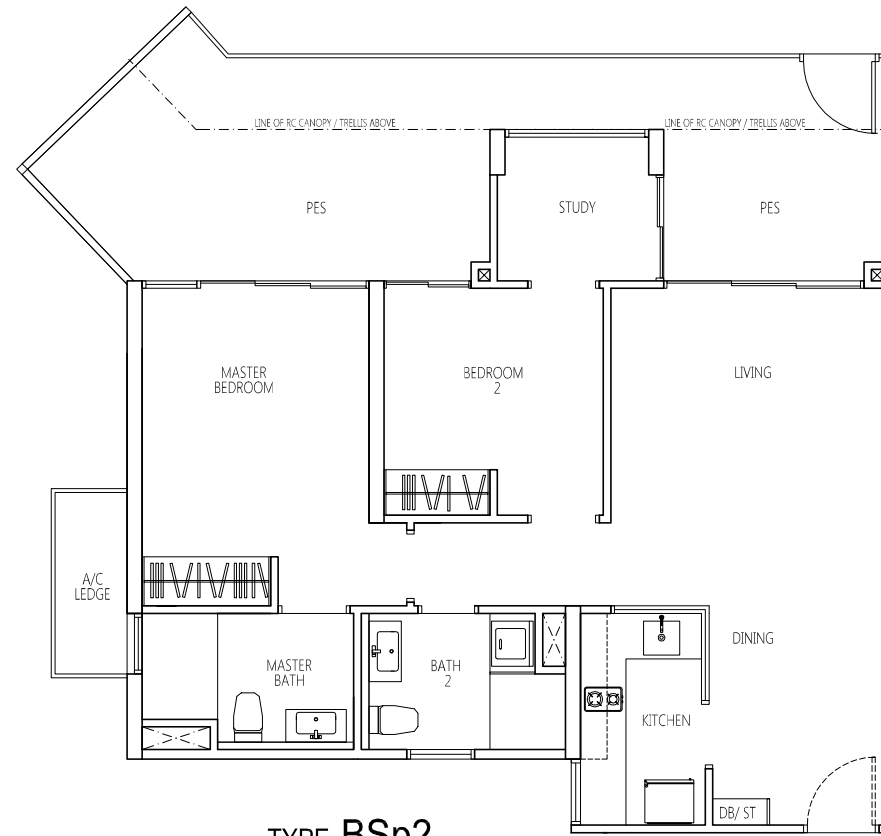
Plans are subject to any amendment as may be approved by the relevant authorities. All floor areas are approximate and are subject to final survey.

DATE OF ISSUE
04 JAN 2013



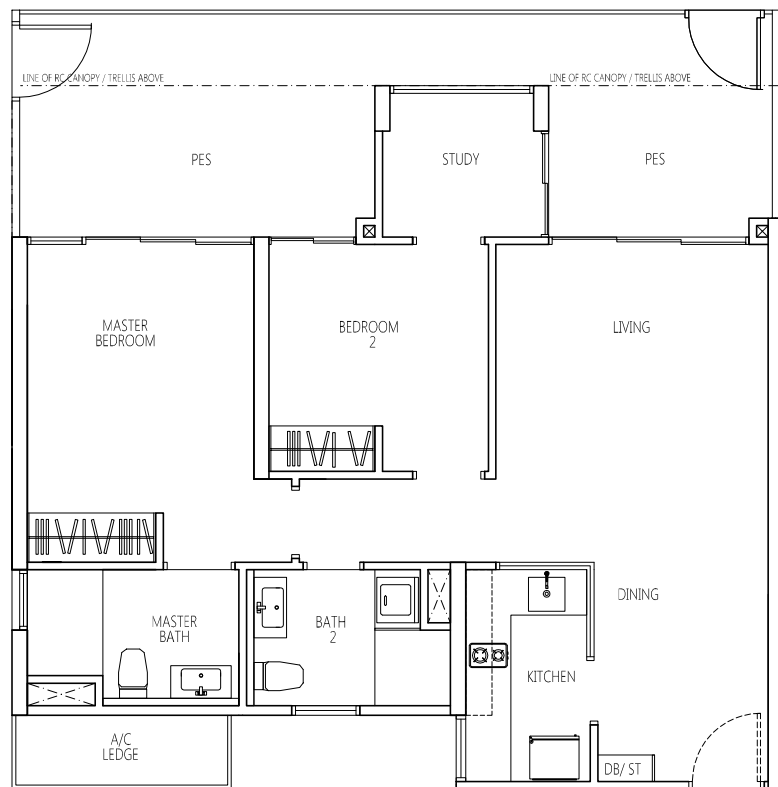
TYPE BSp
2 - BEDROOM +STUDY
98.00 sqm / 1055 sqft

#02-15 (mirror unit)



TYPE BSp2
2 - BEDROOM +STUDY
101.00 sqm / 1087 sqft

#02-05



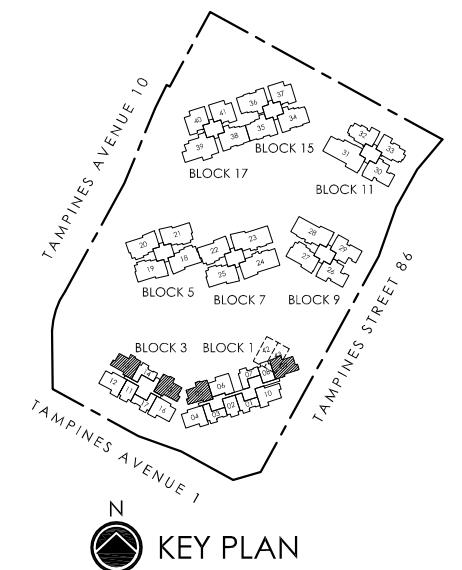
TYPE BSp1
2 - BEDROOM +STUDY
99.00 sqm / 1066 sqft

#02-13



TYPE BSp3
2 - BEDROOM +STUDY
95.00 sqm / 1023 sqft

#02-09 (mirror unit)

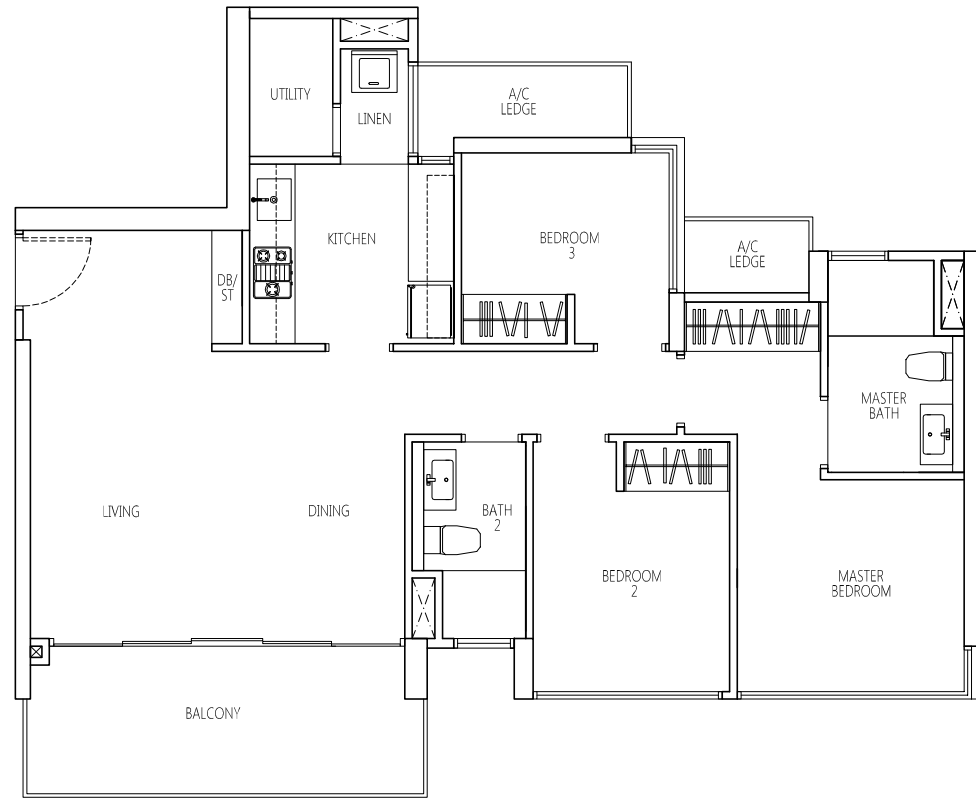


KEY PLAN



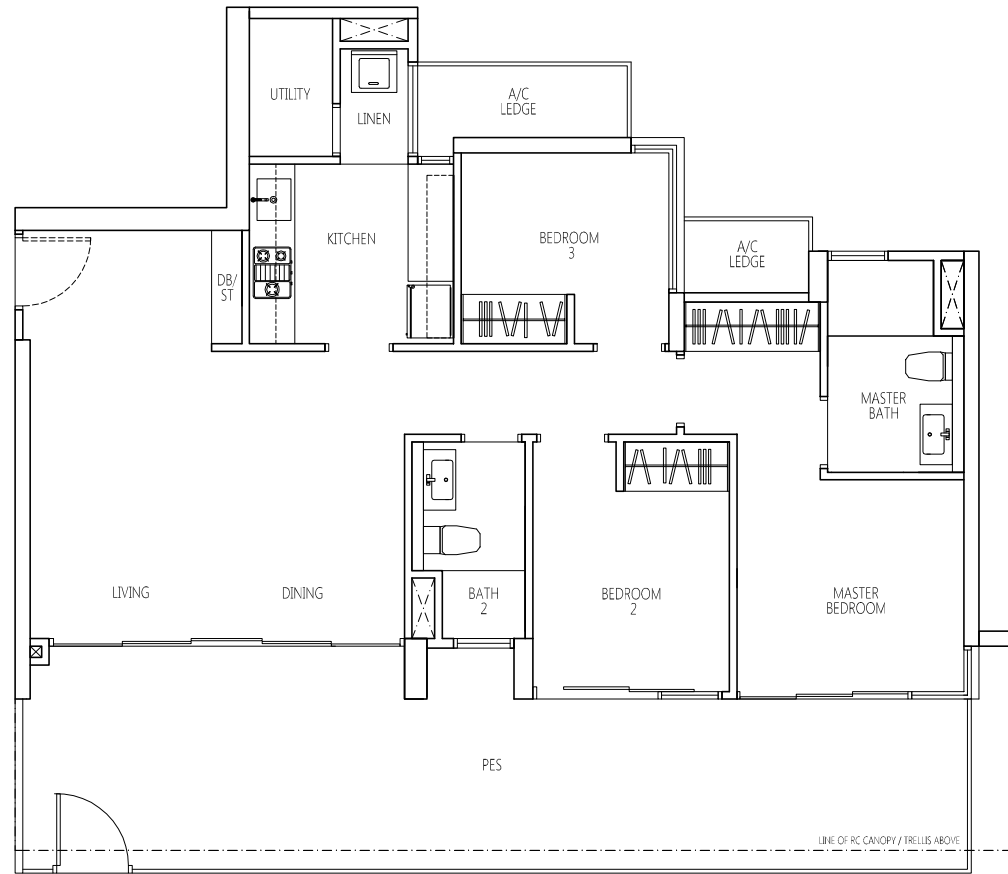
Plans are subject to any amendment as may be approved by the relevant authorities. All floor areas are approximate and are subject to final survey.

DATE OF ISSUE
04 JAN 2013



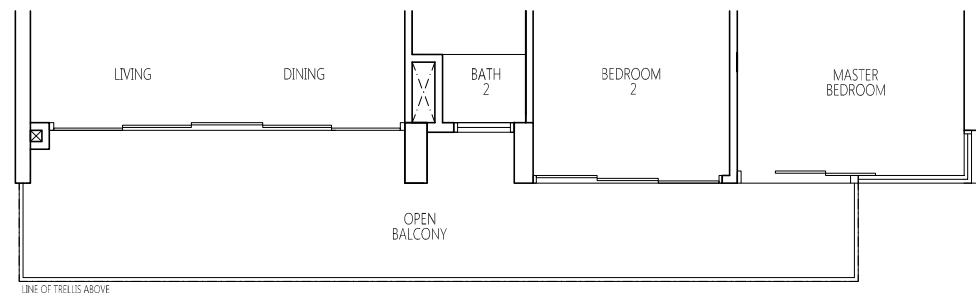
TYPE Cc1
3 - BEDROOM
96.00 sqm / 1033 sqft

#03-26 TO #15-26
#03-29 TO #15-29 (mirror unit)
#03-30 TO #15-30



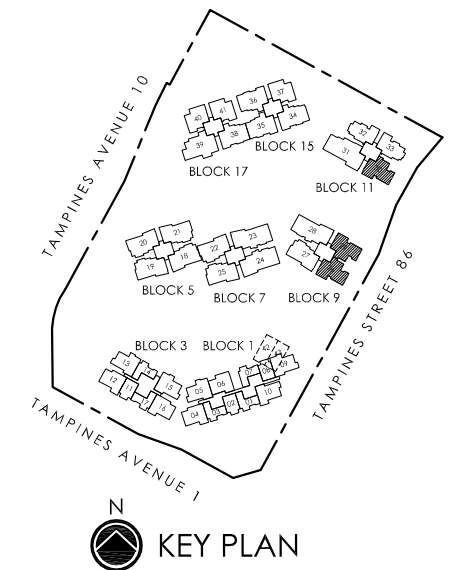
TYPE Cc1p
3 - BEDROOM
119.00 sqm / 1281 sqft

#02-26
#02-29 (mirror unit)
#02-30



TYPE Cc1T
3 - BEDROOM
104.00 sqm / 1119 sqft

#16-26
#16-29 (mirror unit)
#16-30



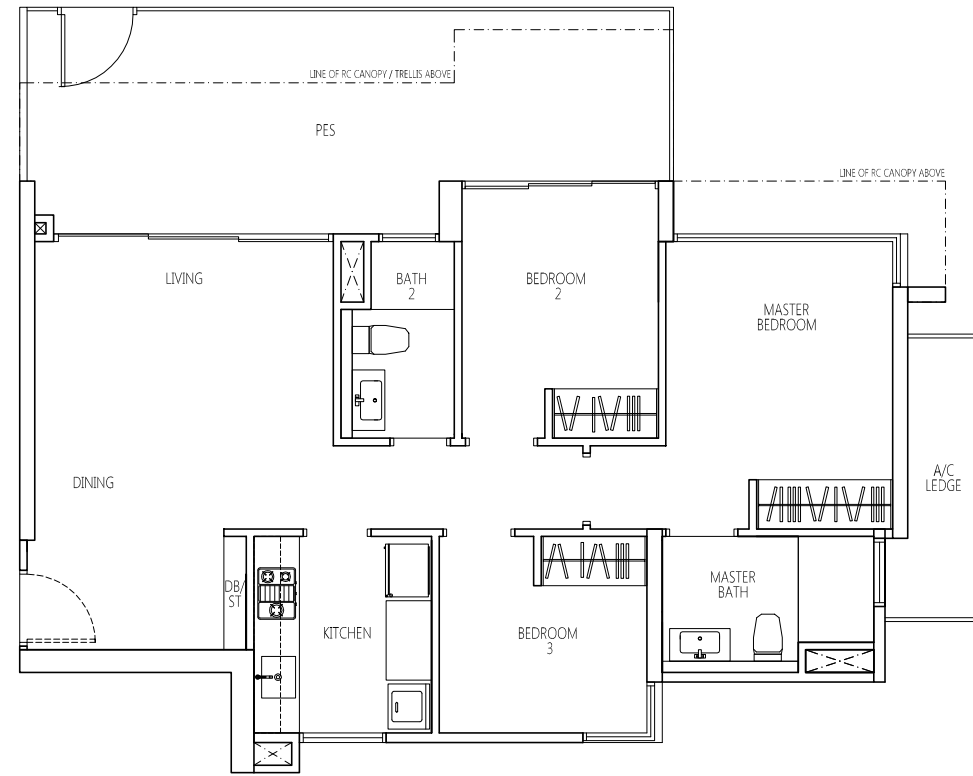
Plans are subject to any amendment as may be approved by the relevant authorities. All floor areas are approximate and are subject to final survey.

DATE OF ISSUE
04 JAN 2013



TYPE Cc2
3 - BEDROOM
84.00 sqm / 904 sqft

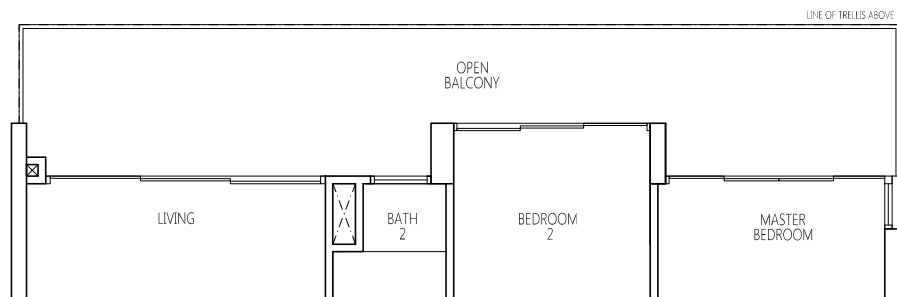
#02-32 TO #15-32 (mirror unit)
#02-33 TO #15-33



TYPE Cc2p
3 - BEDROOM
100.00 sqm / 1076 sqft

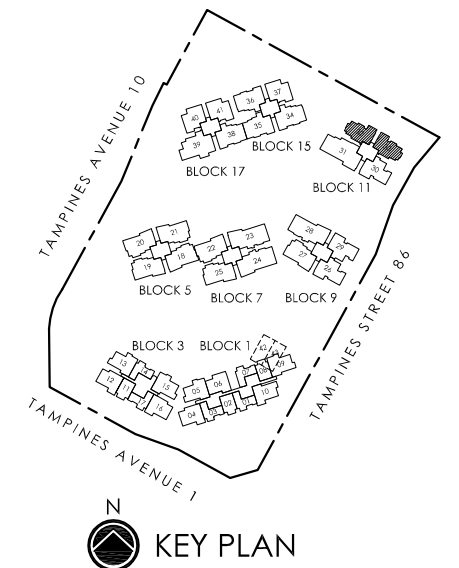
#01-32 (mirror unit)
#01-33

HIGH CEILING
HIGH CEILING



TYPE Cc2T
3 - BEDROOM
97.00 sqm / 1044 sqft

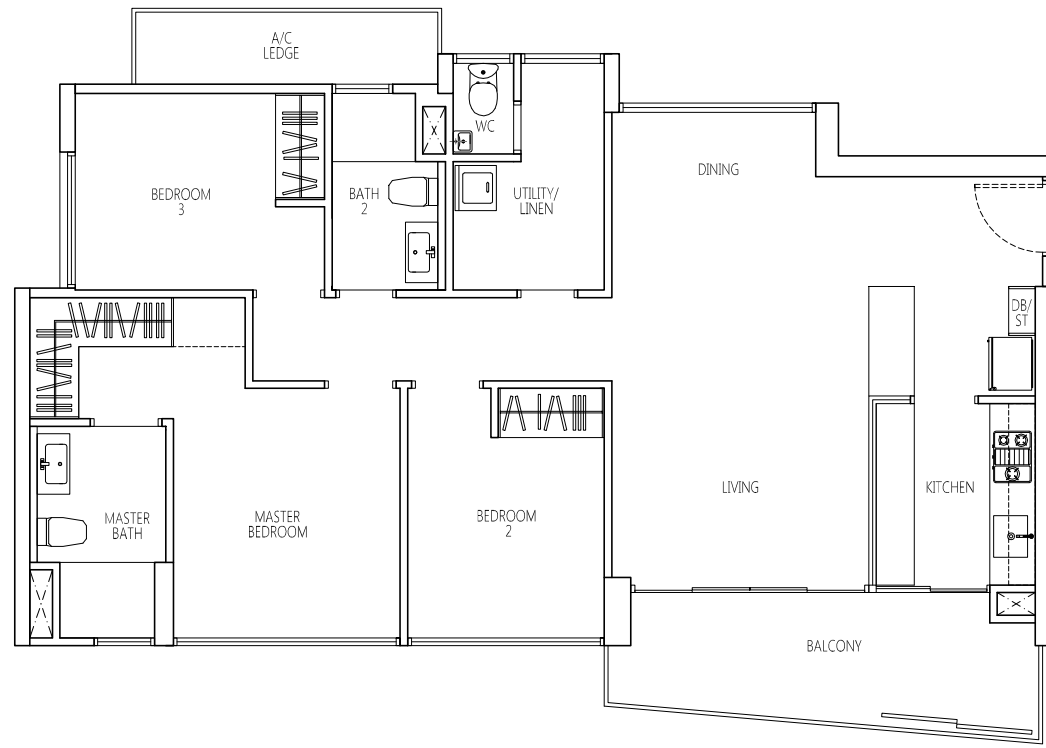
#16-32 (mirror unit)
#16-33



KEY PLAN

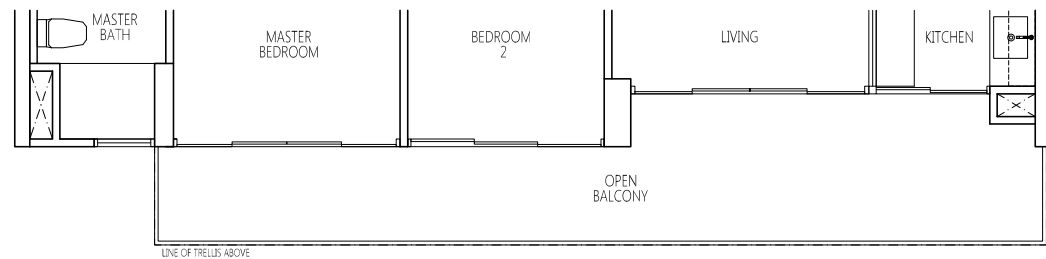


Plans are subject to any amendment as may be approved by the relevant authorities. All floor areas are approximate and are subject to final survey.



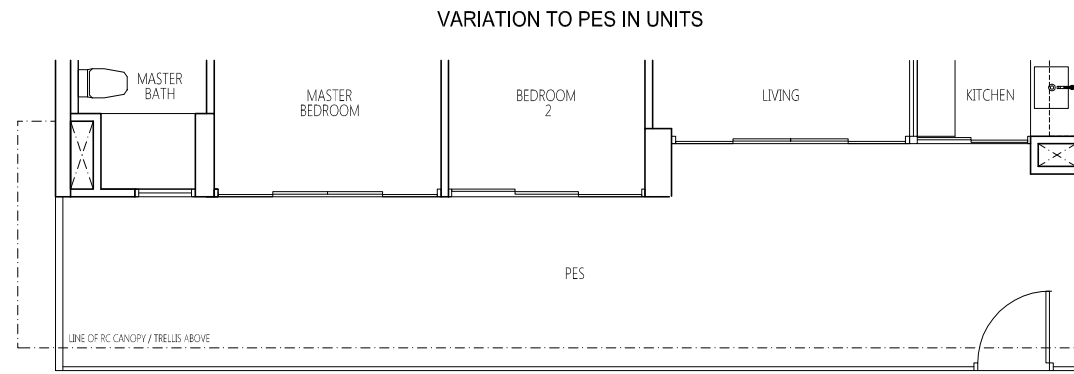
TYPE VH-C
3 - BEDROOM
104.00 sqm / 1119 sqft

#03-19 TO #15-19
#02-20 TO #15-20 (mirror unit)
#03-21 TO #15-21
#03-25 TO #15-25
#03-27 TO #15-27



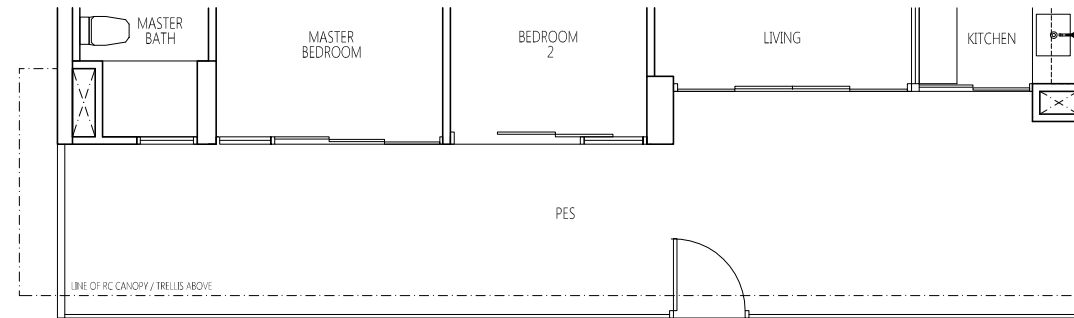
TYPE VH-CT
3 - BEDROOM
113.00 sqm / 1216 sqft

#16-19
#16-20 (mirror unit)
#16-21
#16-25
#16-27



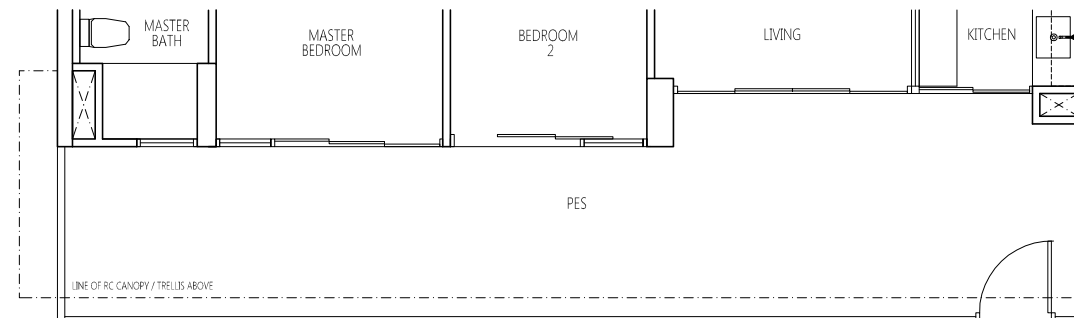
TYPE VH-Cp
3 - BEDROOM
129.00 sqm / 1389 sqft

#01-20 (mirror unit) **HIGH CEILING**



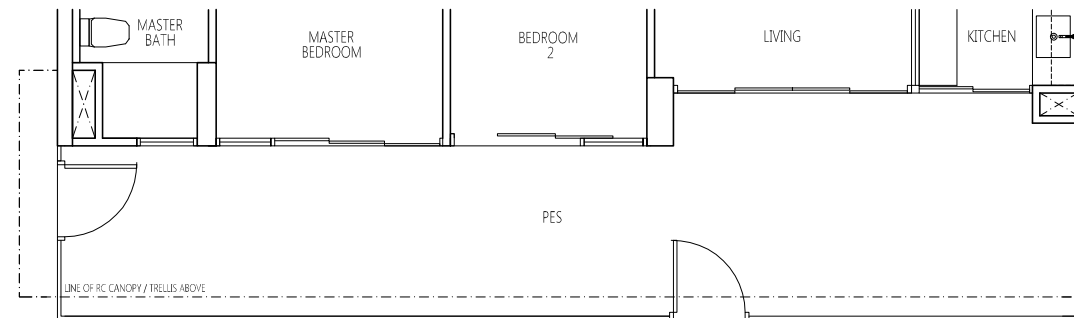
TYPE VH-Cp1
3 - BEDROOM
129.00 sqm / 1389 sqft

#02-25



TYPE VH-Cp2
3 - BEDROOM
129.00 sqm / 1389 sqft

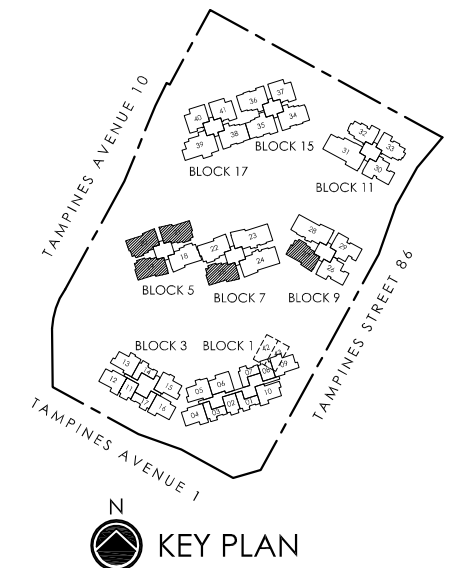
#02-27



TYPE VH-Cp3
3 - BEDROOM
129.00 sqm / 1389 sqft

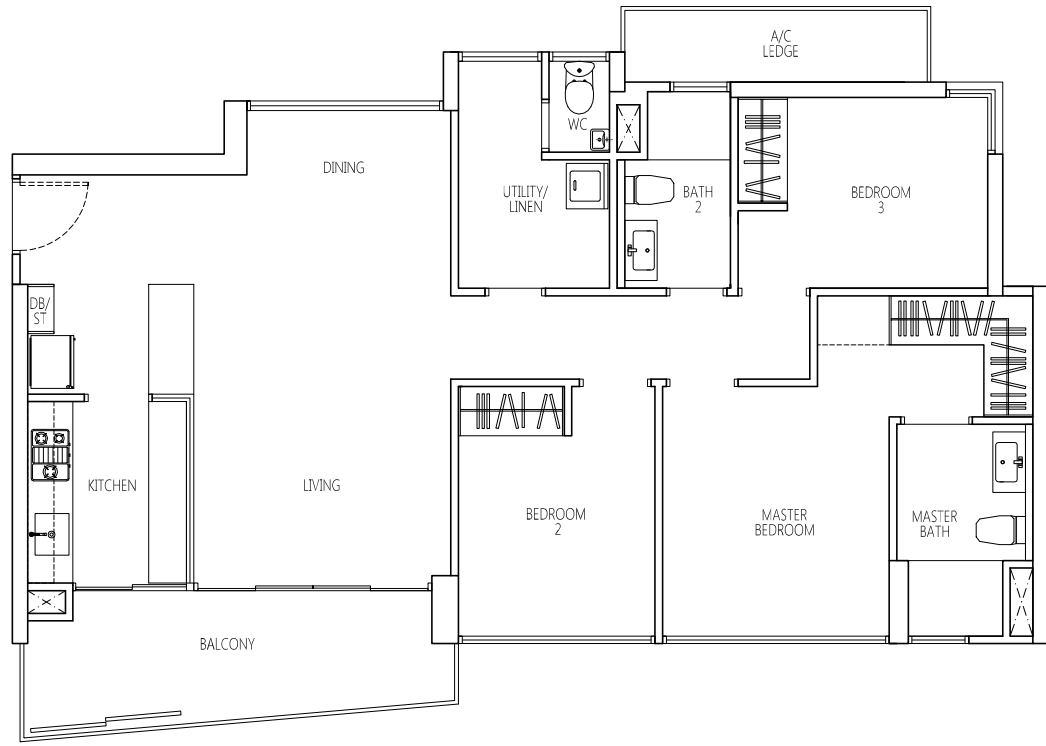
#02-19

DATE OF ISSUE
04 JAN 2013

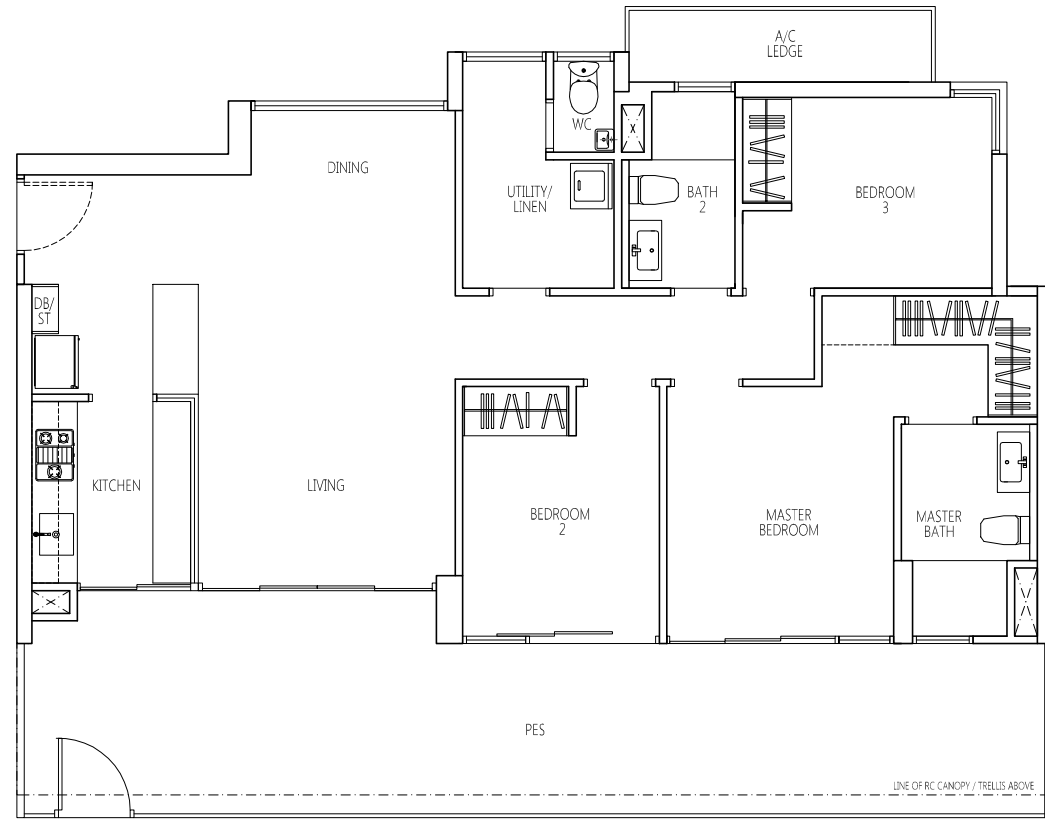


Plans are subject to any amendment as may be approved by the relevant authorities. All floor areas are approximate and are subject to final survey.

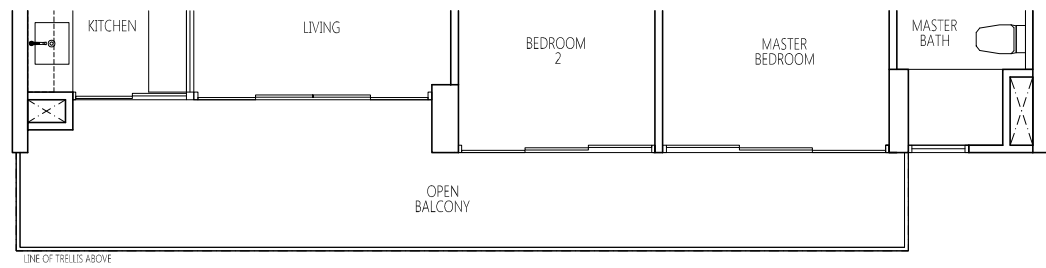
DATE OF ISSUE
04 JAN 2013



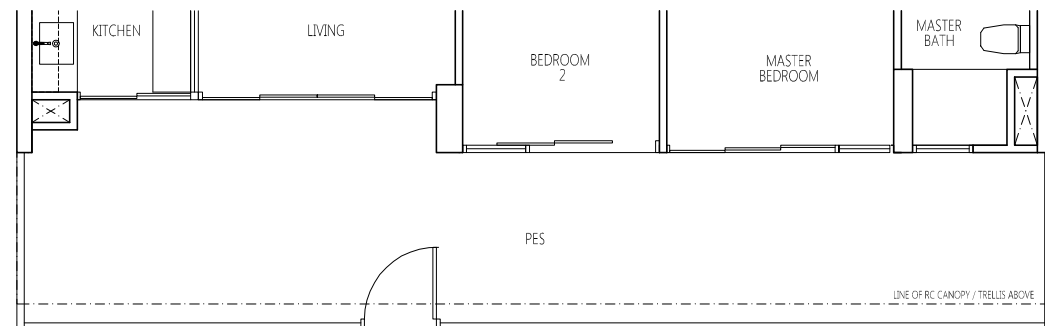
TYPE VH-Ca #03-18 TO #15-18
#03-22 TO #15-22
104.00 sqm / 1119 sqft



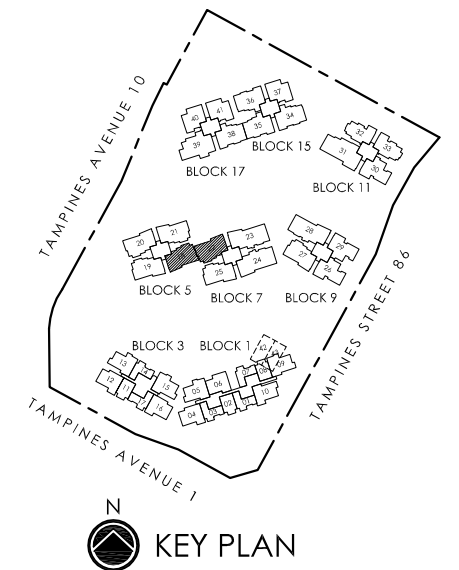
TYPE VH-Cap #02-22
129.00 sqm / 1389 sqft



TYPE VH-CaT #16-18
#16-22
113.00 sqm / 1216 sqft

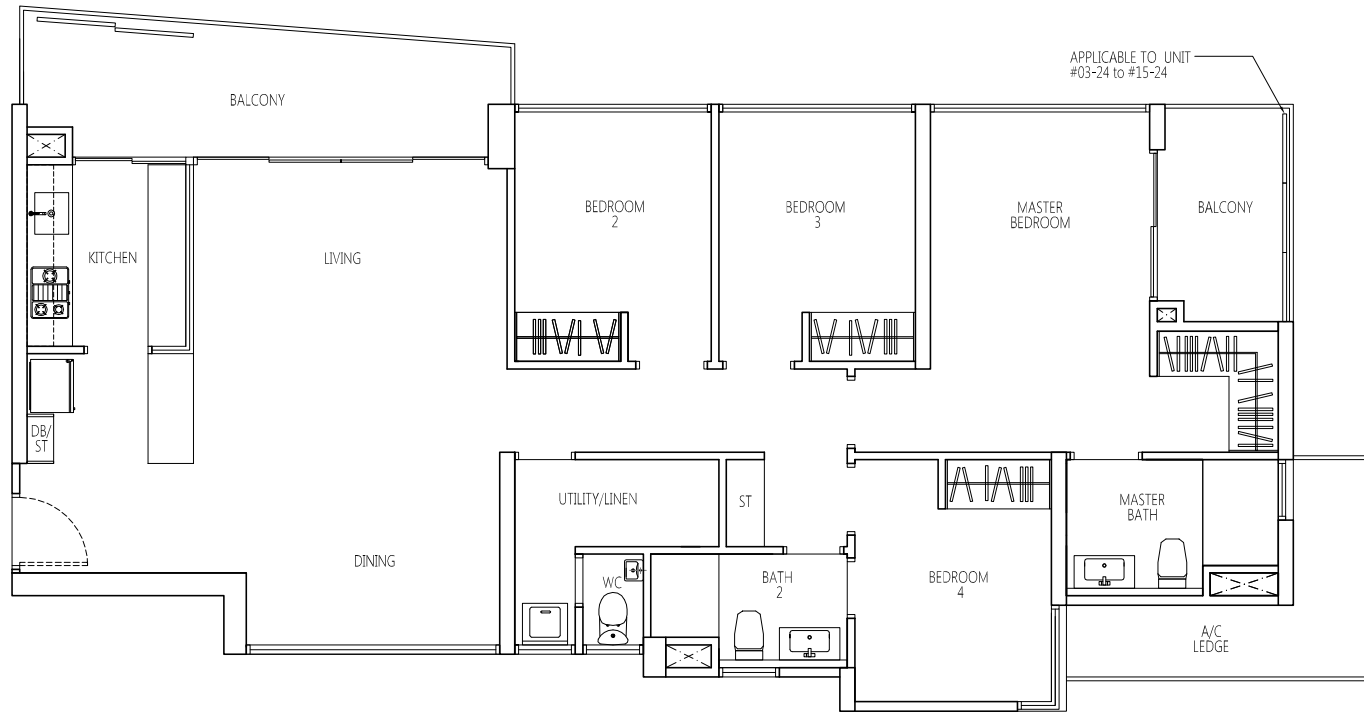


TYPE VH-Cap1 #02-18
129.00 sqm / 1389 sqft



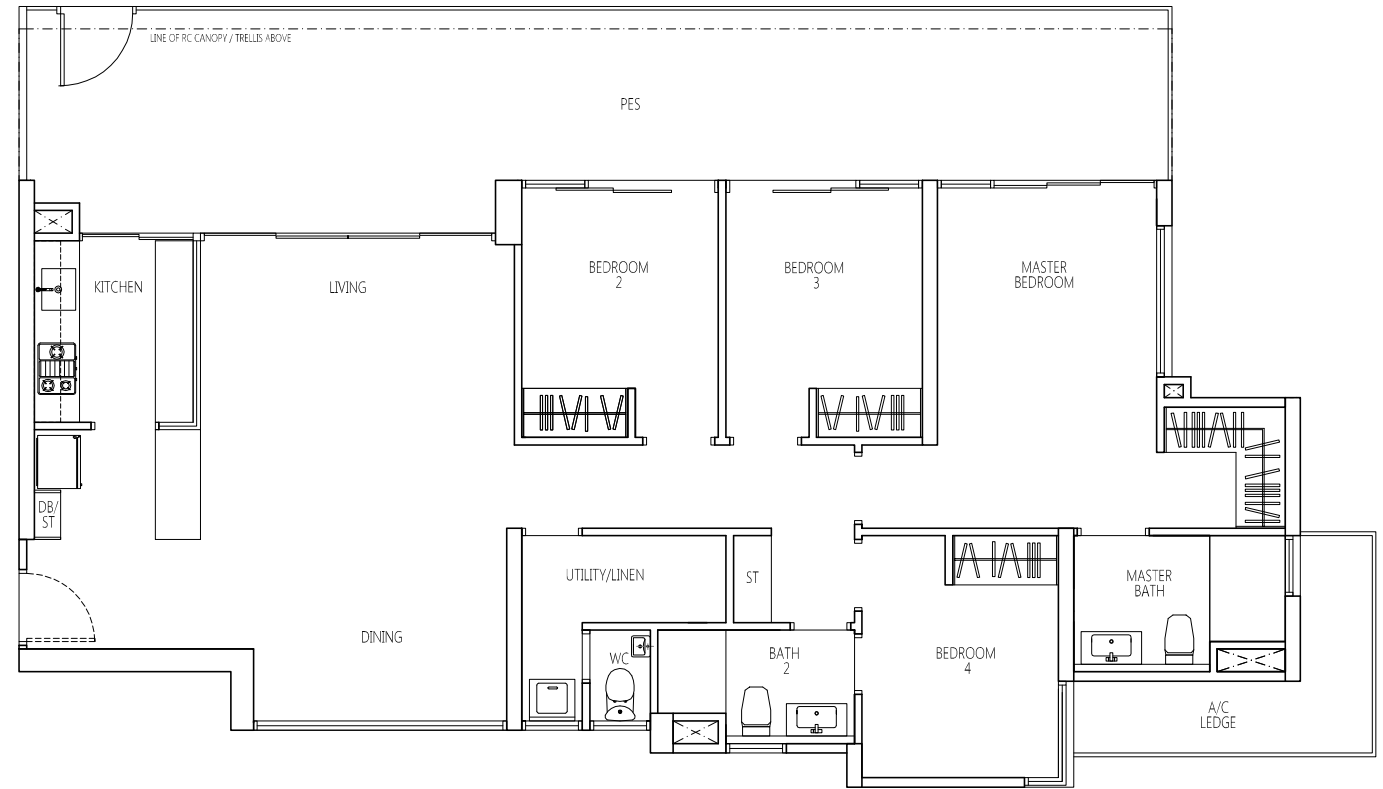
Plans are subject to any amendment as may be approved by the relevant authorities. All floor areas are approximate and are subject to final survey.

DATE OF ISSU
04 JAN 2013



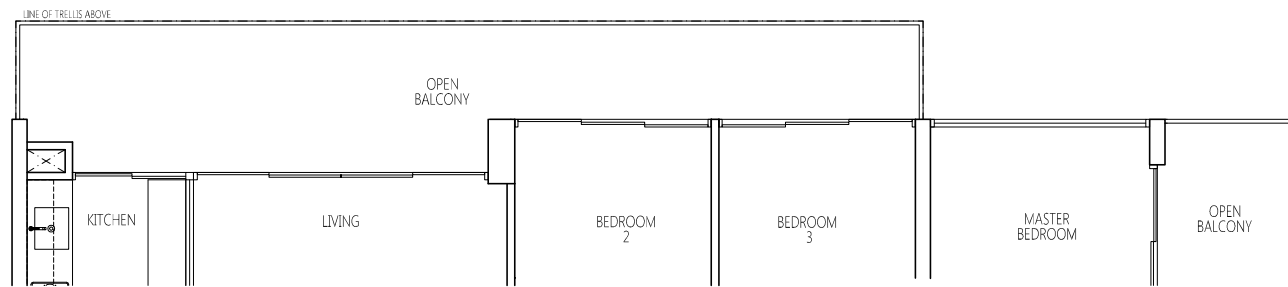
TYPE VH-D
4 - BEDROOM
131.00 sqm / 1410 sqft

#03-23 TO #15-23
#03-24 TO #15-24 (mirror unit)
#03-28 TO #15-28 (mirror unit)



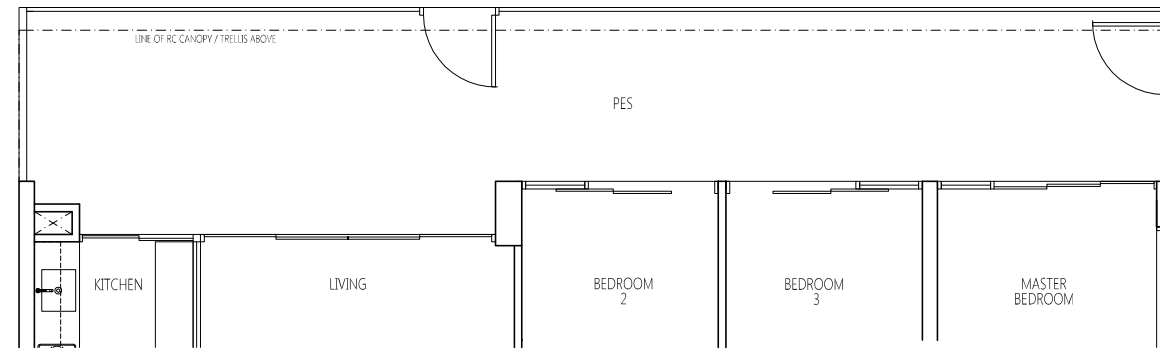
TYPE VH-Dp
4 - BEDROOM
154.00 sqm / 1658 sqft

#02-23
#02-28 (mirror unit)



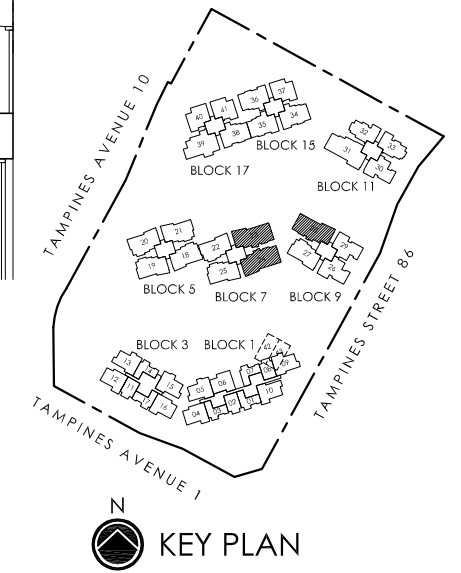
TYPE VH-DT
4 - BEDROOM
140.00 sqm / 1507 sqft

#16-23
#16-24 (mirror unit)
#16-28 (mirror unit)



TYPE VH-Dp1
4 - BEDROOM
154.00 sqm / 1658 sqft

#02-24 (mirror unit)



Plans are subject to any amendment as may be approved by the relevant authorities. All floor areas are approximate and are subject to final survey.

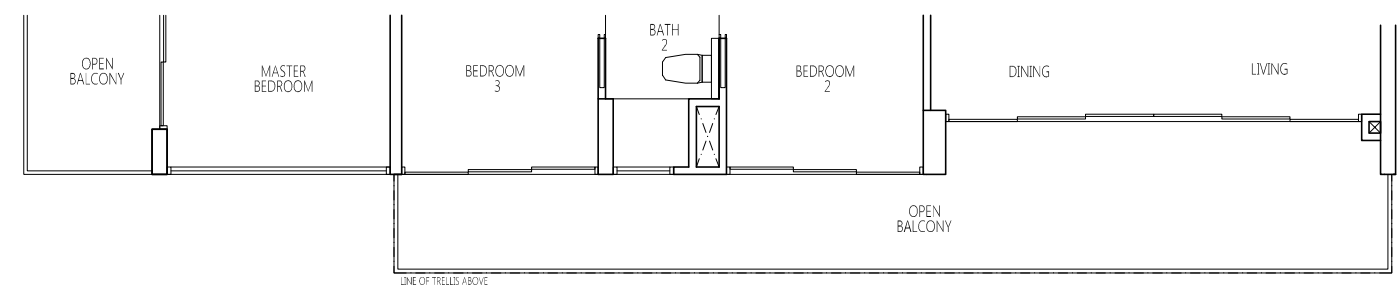
DATE OF ISSUE
04 JAN 2013



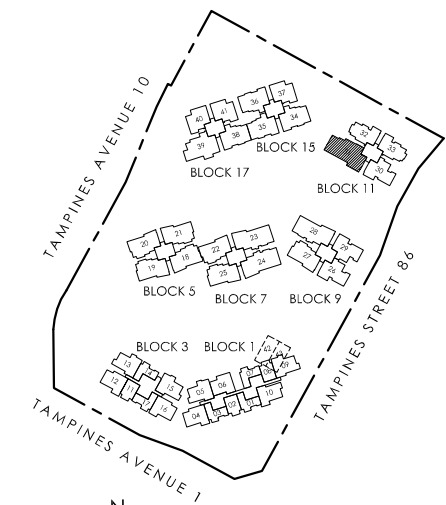
TYPE E #03-31 TO #15-31
5 - BEDROOM
150.00 sqm / 1615 sqft



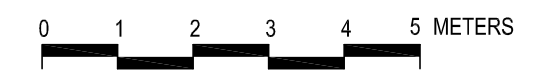
TYPE Ep #02-31
5 - BEDROOM
184.00 sqm / 1981 sqft



TYPE ET #16-31
5 - BEDROOM
159.00 sqm / 1711 sqft

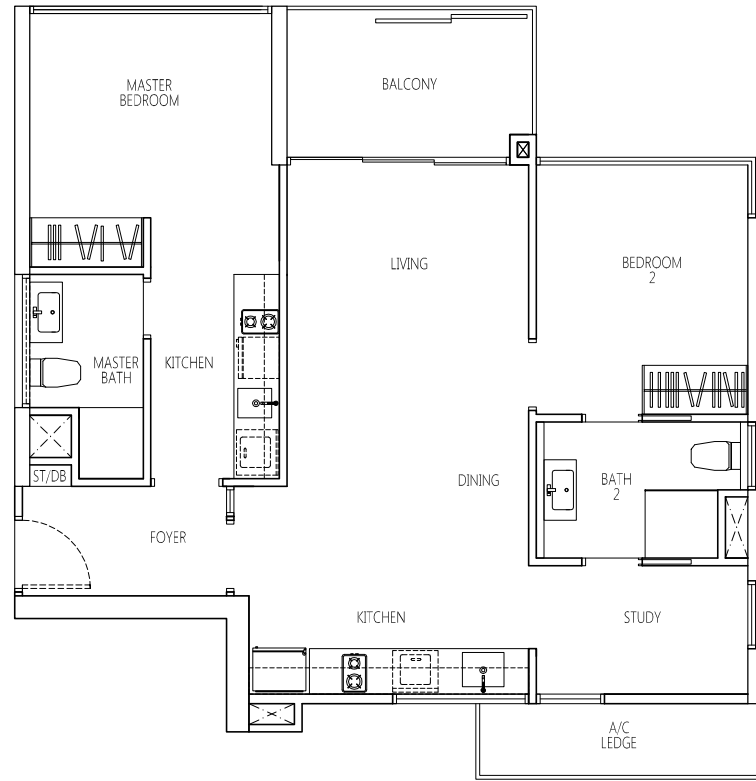


N
KEY PLAN



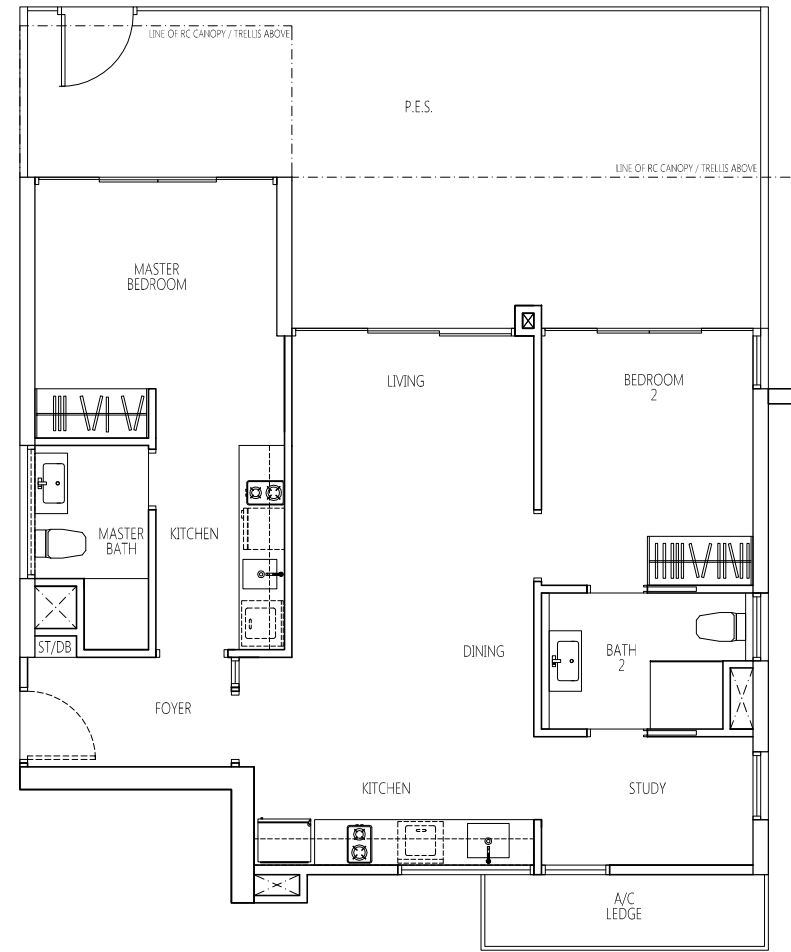
Plans are subject to any amendment as may be approved by the relevant authorities. All floor areas are approximate and are subject to final survey.

DATE OF ISSUE
04 JAN 2013



TYPE TR-BS
2 - BEDROOM + STUDY
82 sqm / 883 sqft

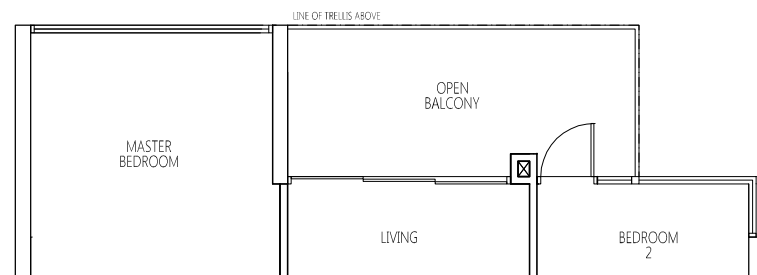
#02-37 TO #15-37
#02-40 TO #15-40 (mirror unit)
#02-41 TO #15-41



TYPE TR-BSp
2 - BEDROOM + STUDY
110.00 sqm / 1184 sqft

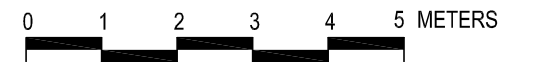
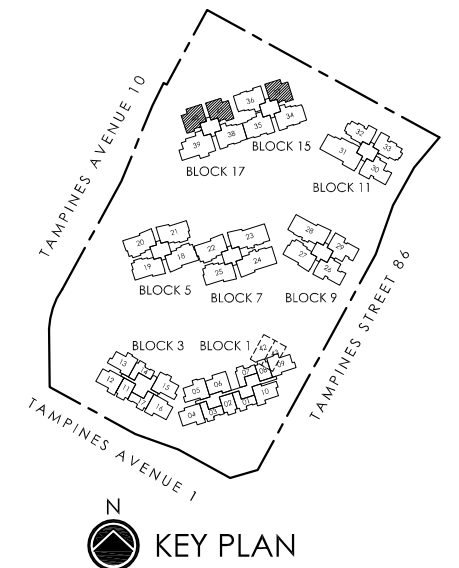
#01-37
#01-40 (mirror unit)
#01-41

HIGH CEILING
HIGH CEILING
HIGH CEILING



TYPE TR-BST
2 - BEDROOM + STUDY
85.00 sqm / 915 sqft

#16-37
#16-40 (mirror unit)
#16-41



Plans are subject to any amendment as may be approved by the relevant authorities. All floor areas are approximate and are subject to final survey.

DATE OF ISSUE
04 JAN 2013



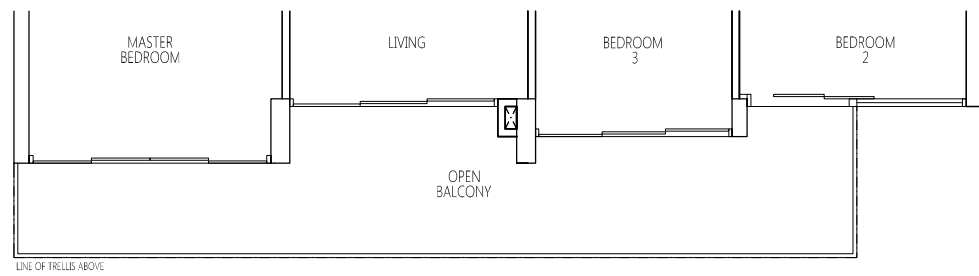
TYPE TR-C
3 - BEDROOM
108.00 sqm / 1163 sqft

#03-34 TO #15-34
#03-35 TO #15-35 (mirror unit)
#02-36 TO #15-36
#03-38 TO #15-38



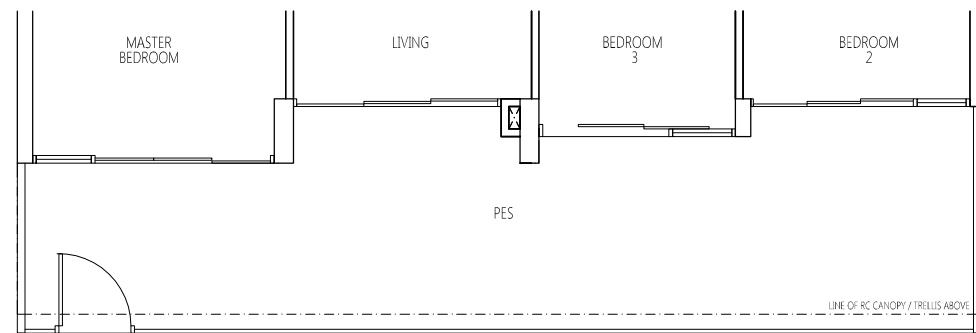
TYPE TR-Cp
3 - BEDROOM
136.00 sqm / 1464 sqft

#01-36 **HIGH CEILING**



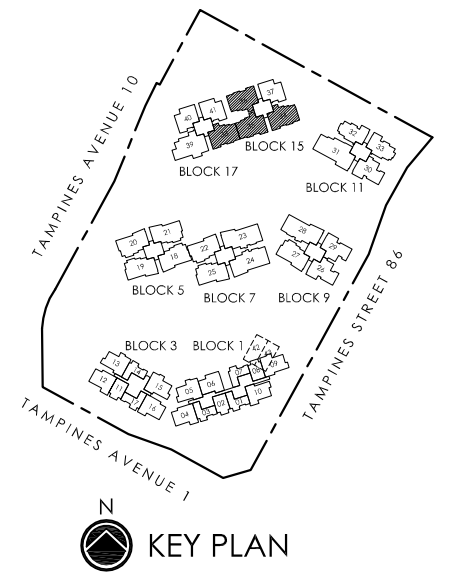
TYPE TR-CT
3 - BEDROOM
120.00 sqm / 1292 sqft

#16-34
#16-35 (mirror unit)
#16-36
#16-38



TYPE TR-Cp1
3 - BEDROOM
136.00 sqm / 1464 sqft

#02-34
#02-35 (mirror unit)
#02-38

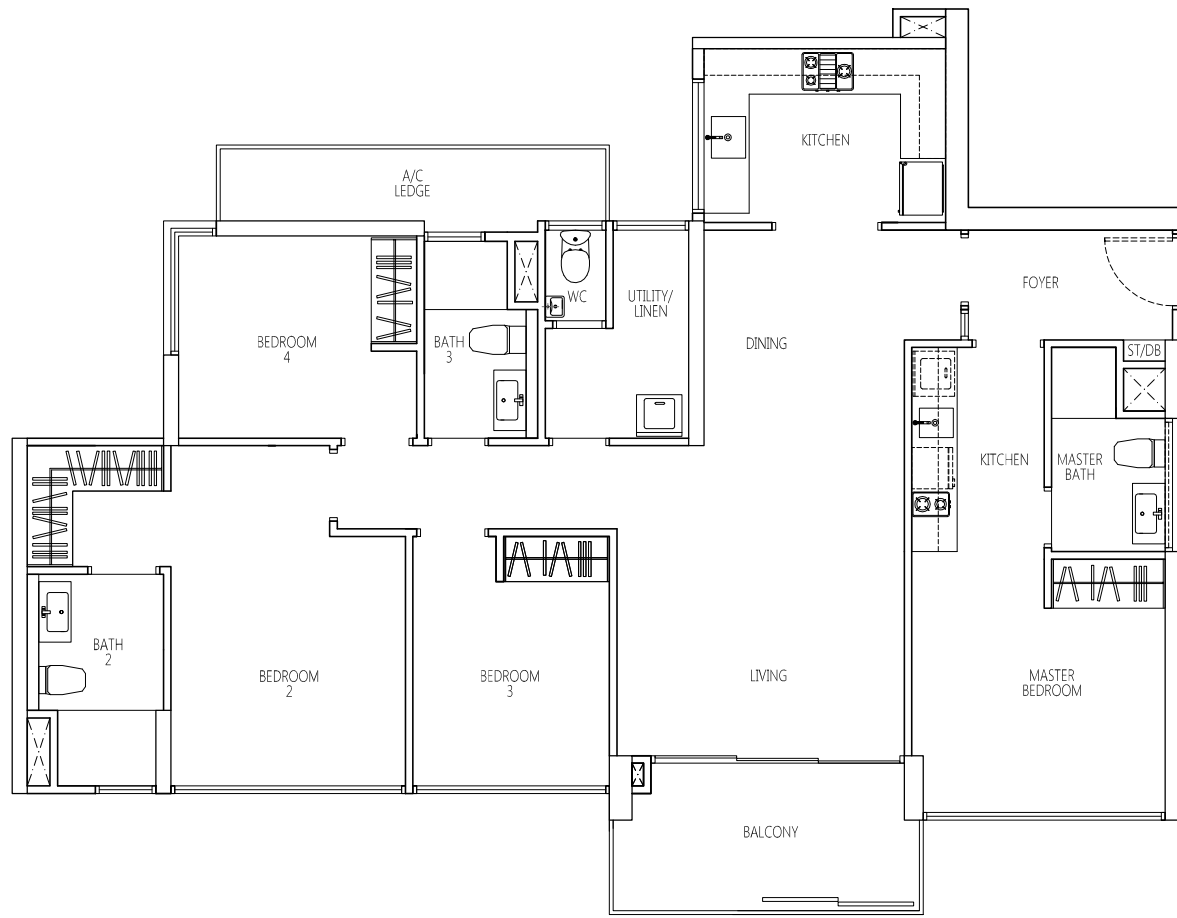


KEY PLAN

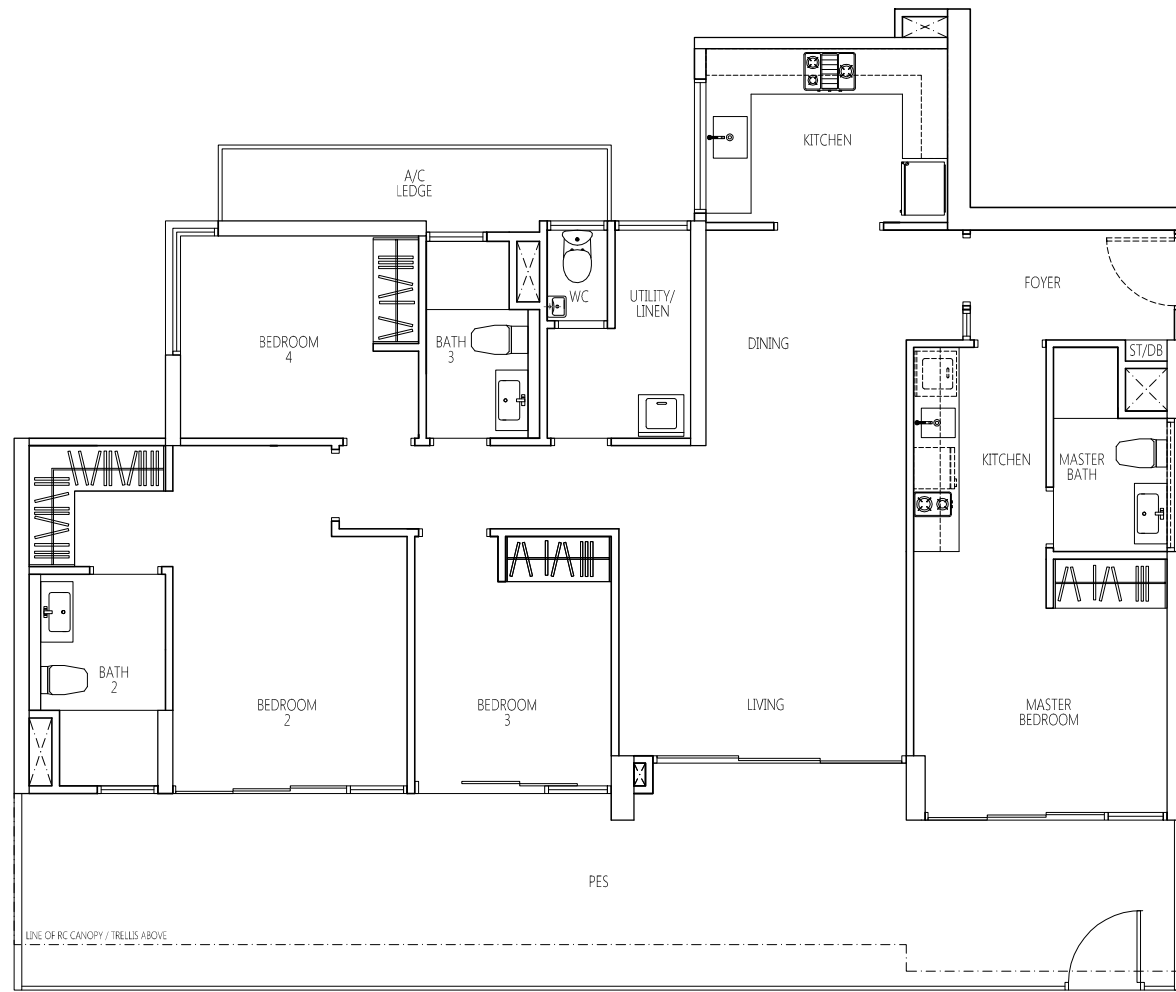


Plans are subject to any amendment as may be approved by the relevant authorities. All floor areas are approximate and are subject to final survey.

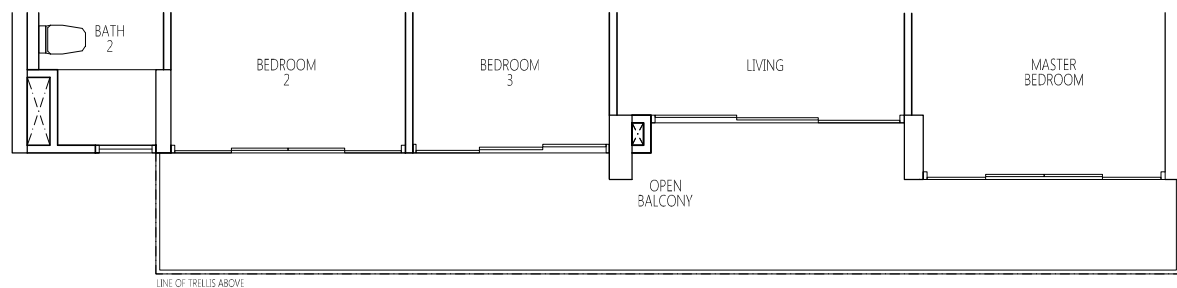
DATE OF ISSUE
04 JAN 2013



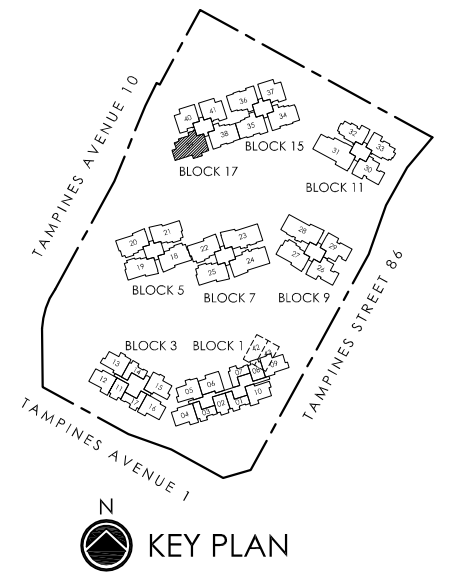
TYPE TR-D #03-39 TO #15-39
4 - BEDROOM
128.00 sqm / 1378 sqft



TYPE TR-Dp #02-39
4 - BEDROOM
161.00 sqm / 1733 sqft



TYPE TR-DT #16-39
4 - BEDROOM
142.00 sqm / 1528 sqft



Plans are subject to any amendment as may be approved by the relevant authorities. All floor areas are approximate and are subject to final survey.