

# 4 bedroom

standard C1

119 sqm / 1,281 sqft

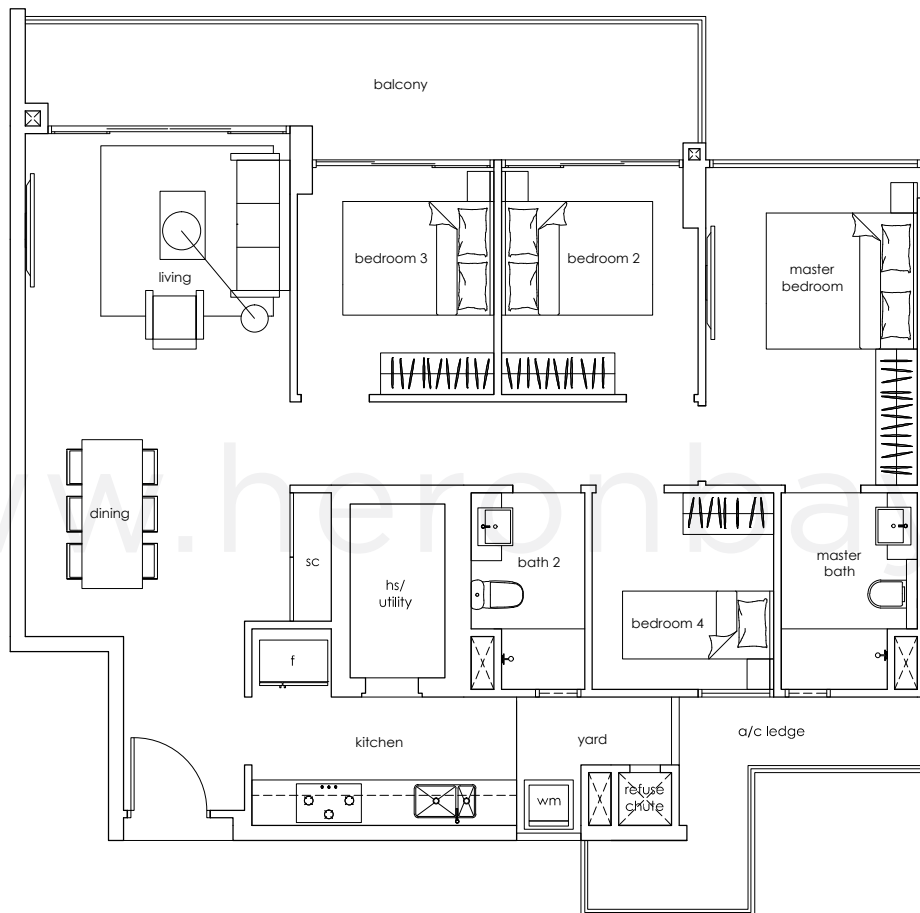
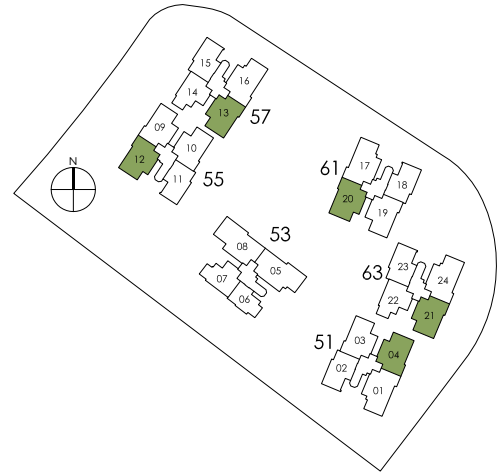
#02 to #16-04 (mirrored units)

#03 to #15-12 (mirrored units)

#02 to #15-13

#02 to #17-20 (mirrored units)

#02 to #16-21



Area includes A/C ledge, balcony, PES, open terrace and void (where applicable). The plans are subject to change as may be required or approved by the relevant authorities. These are not drawn to scale and are for purpose of a visual representation of the different layouts that are available. All areas are approximate and subject to final survey. The developer and its agents cannot be held liable for any inaccuracies.

# 4 bedroom

standard C1-p1

148 sqm / 1,593 sqft

pool with jacuzzi / pond / garden \*

#01-04 (mirrored unit)

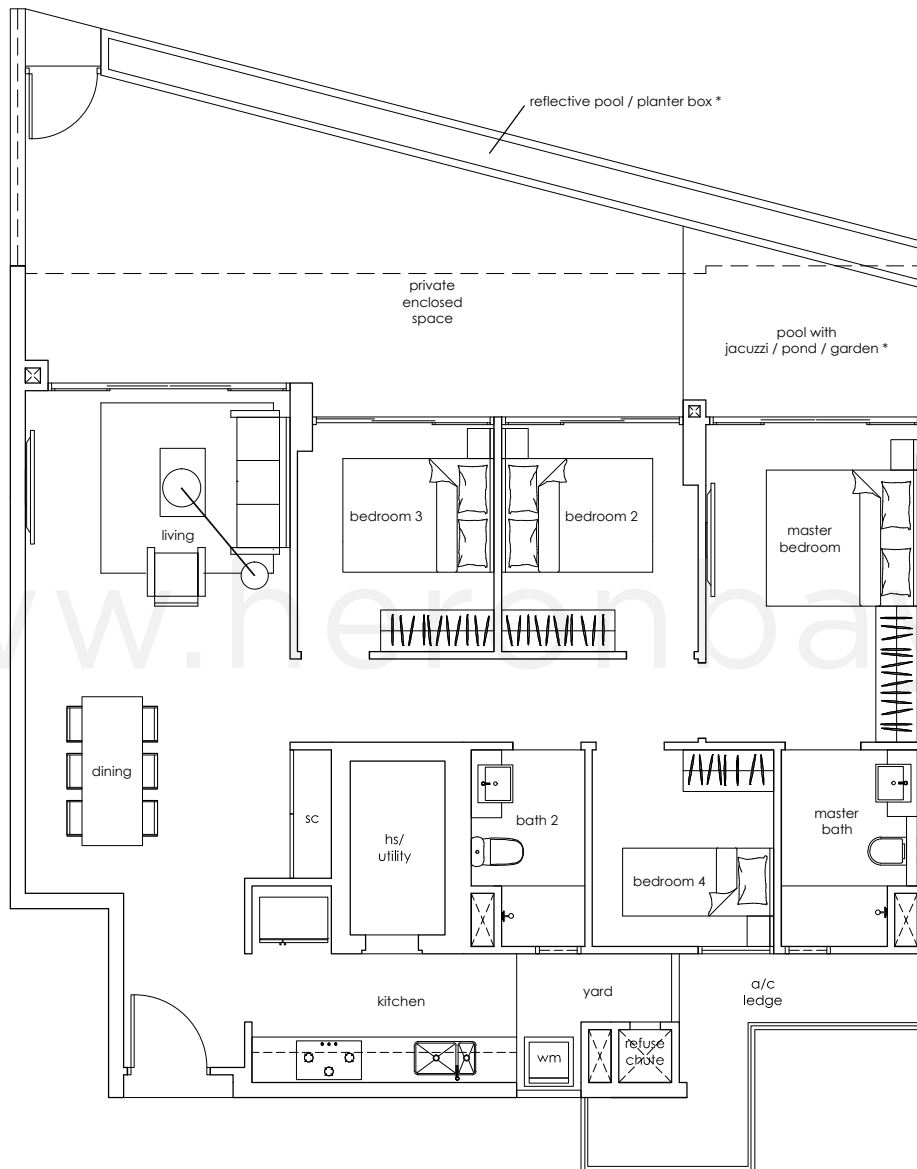
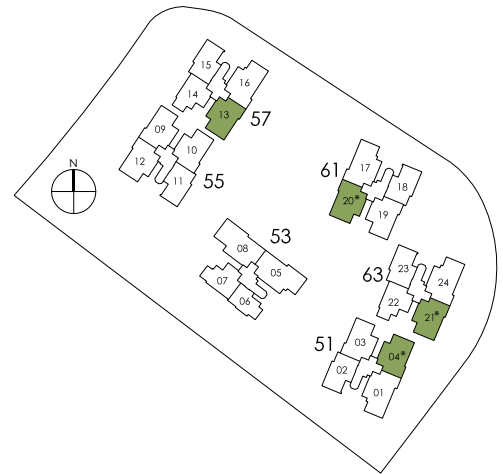
#01-20 (mirrored unit)

#01-21

standard C1-p2

148 sqm / 1,593 sqft

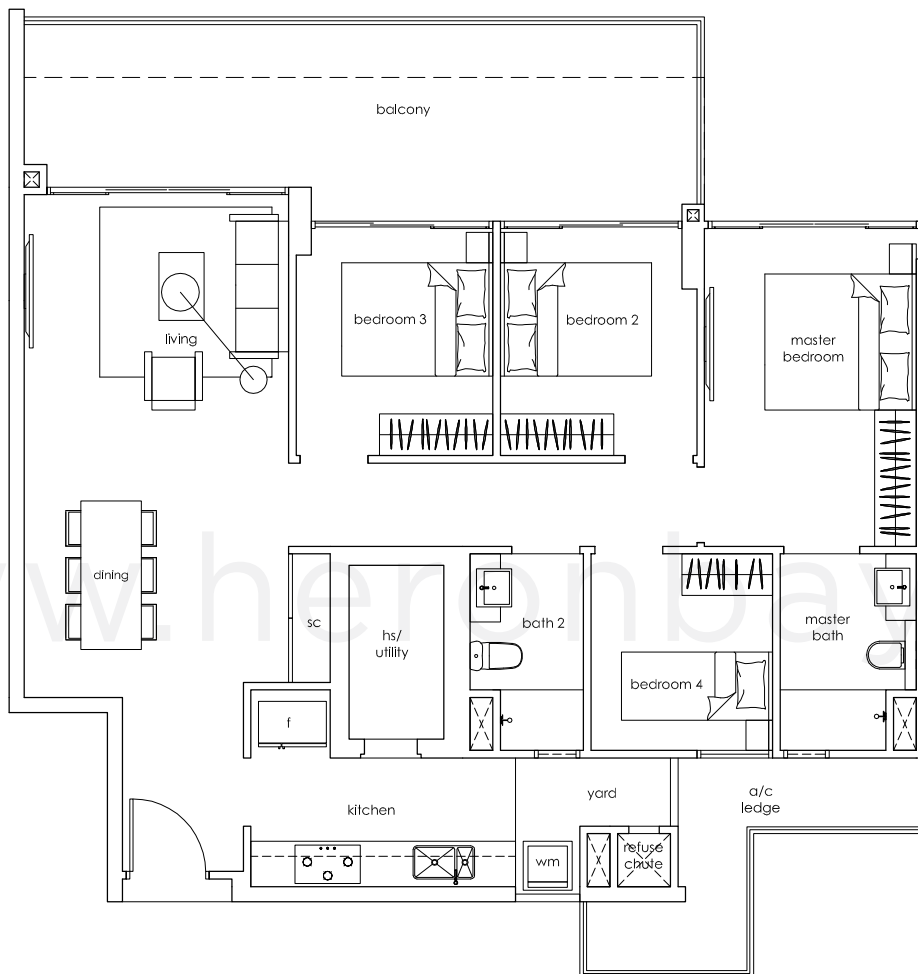
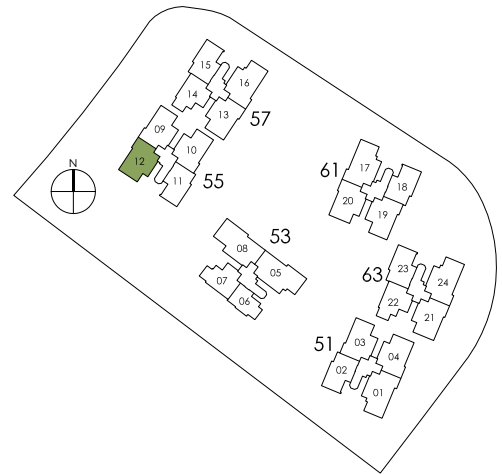
#01-13



Area includes A/C ledge, balcony, PES, open terrace and void (where applicable). The plans are subject to change as may be required or approved by the relevant authorities. These are not drawn to scale and are for purpose of a visual representation of the different layouts that are available. All areas are approximate and subject to final survey. The developer and its agents cannot be held liable for any inaccuracies.

# 4 bedroom

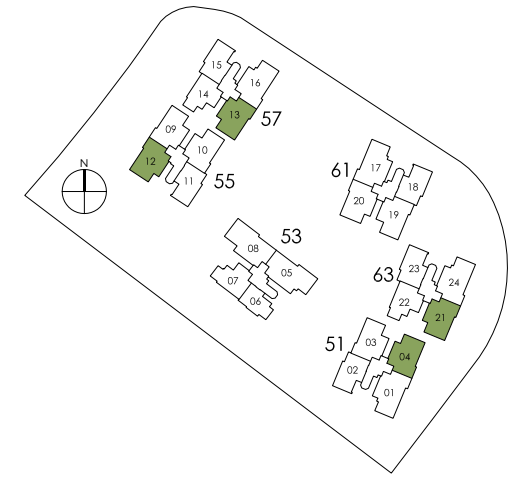
standard C1-a  
126 sqm / 1,356 sqft  
#02-12 (mirrored unit)



Area includes A/C ledge, balcony, PES, open terrace and void (where applicable). The plans are subject to change as may be required or approved by the relevant authorities. These are not drawn to scale and are for purpose of a visual representation of the different layouts that are available. All areas are approximate and subject to final survey. The developer and its agents cannot be held liable for any inaccuracies.

# 4+1 bedroom penthouse

standard PH4  
 223 sqm / 2,400 sqft  
 #17-04 (mirrored unit)  
 #16-12 (mirrored unit)  
 #16-13  
 #17-21

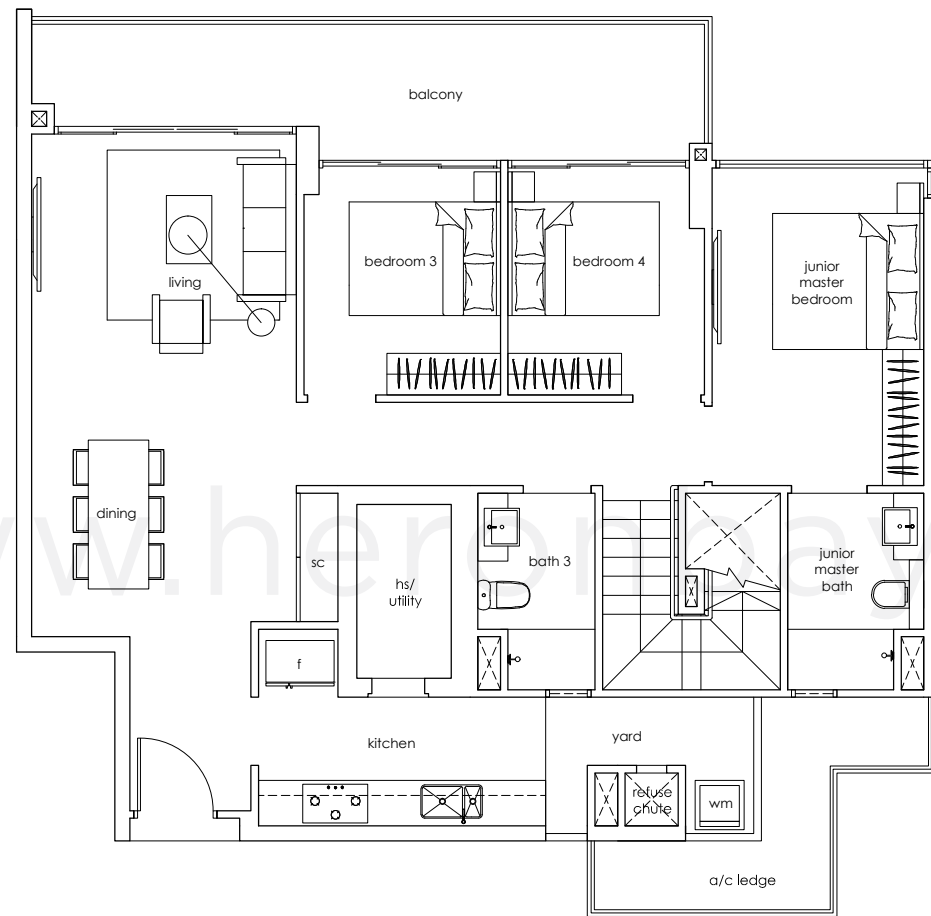


4 bedroom standard

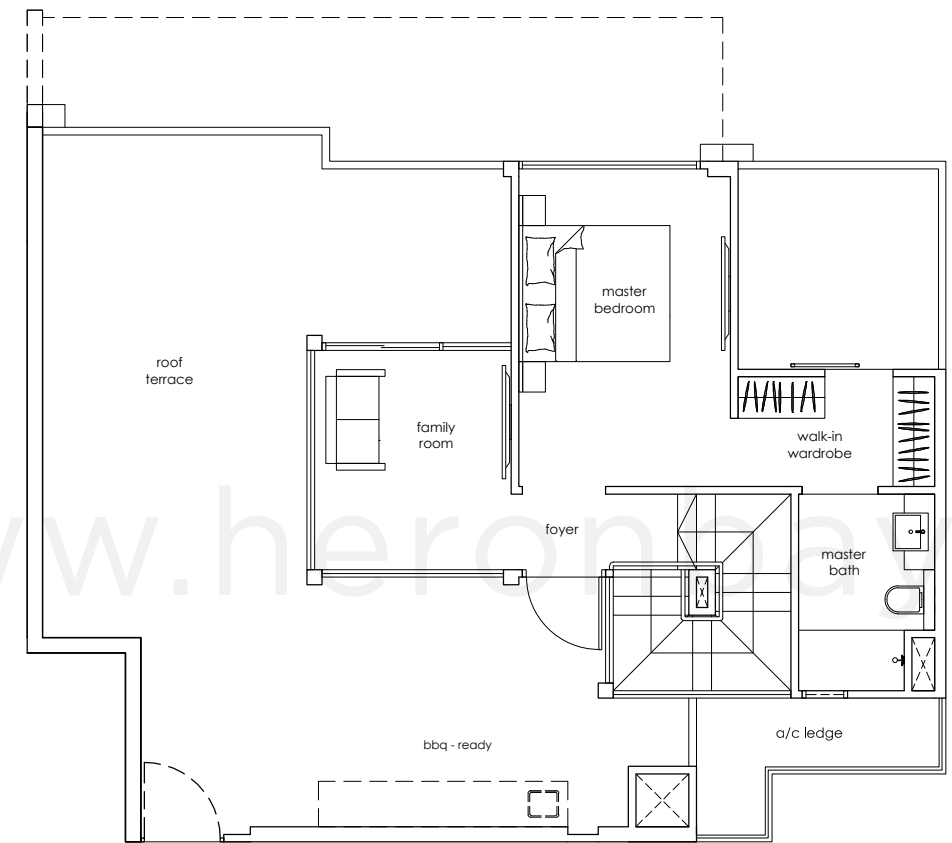
3

2

5



lower level



upper level

Area includes A/C ledge, balcony, PES, open terrace and void (where applicable). The plans are subject to change as may be required or approved by the relevant authorities. These are not drawn to scale and are for purpose of a visual representation of the different layouts that are available. All areas are approximate and subject to final survey. The developer and its agents cannot be held liable for any inaccuracies.

Area includes A/C ledge, balcony, PES, open terrace and void (where applicable). The plans are subject to change as may be required or approved by the relevant authorities. These are not drawn to scale and are for purpose of a visual representation of the different layouts that are available. All areas are approximate and subject to final survey. The developer and its agents cannot be held liable for any inaccuracies.