

# 4 bedroom (dual key)

dual key C2

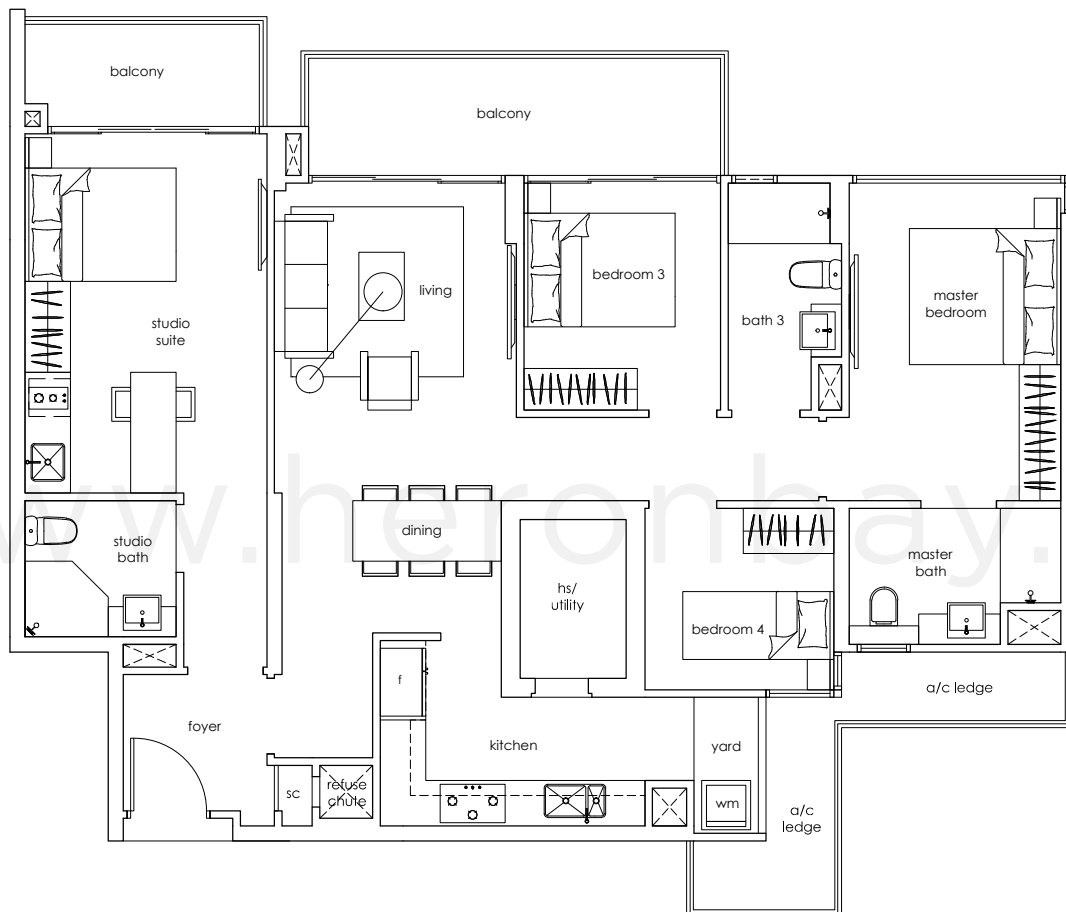
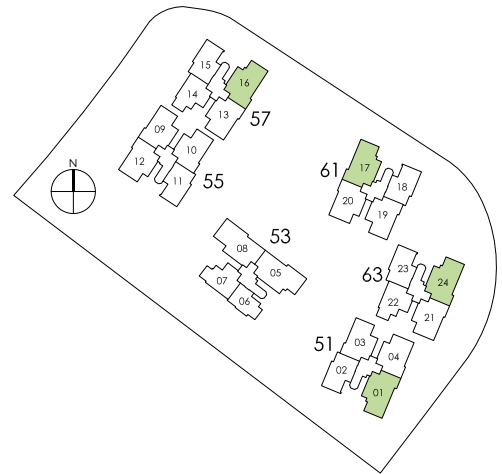
129 sqm / 1,389 sqft

#02 to #16-01

#02 to #15-16 (mirrored units)

#02 to #16-17

#02 to #16-24 (mirrored units)

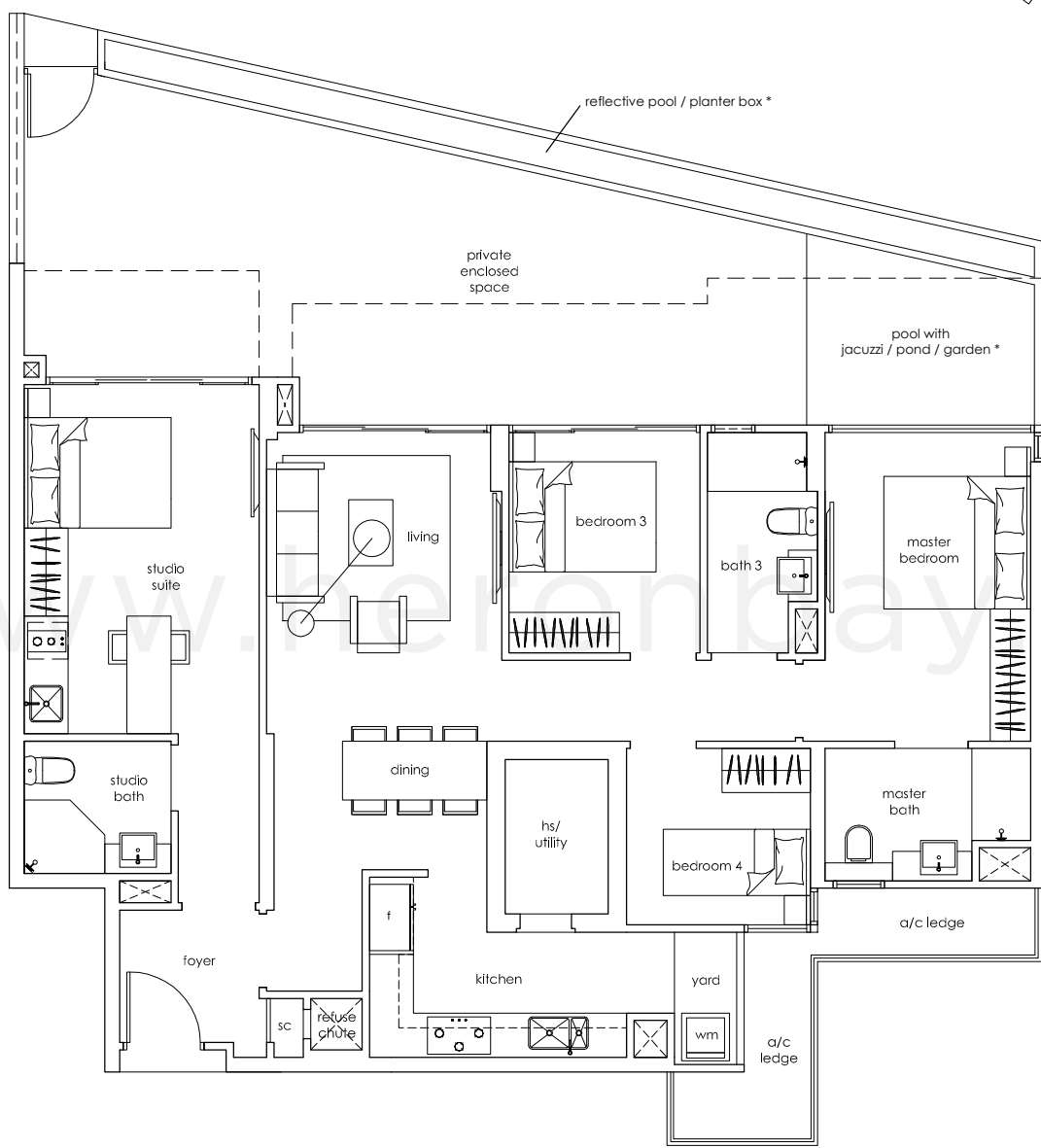
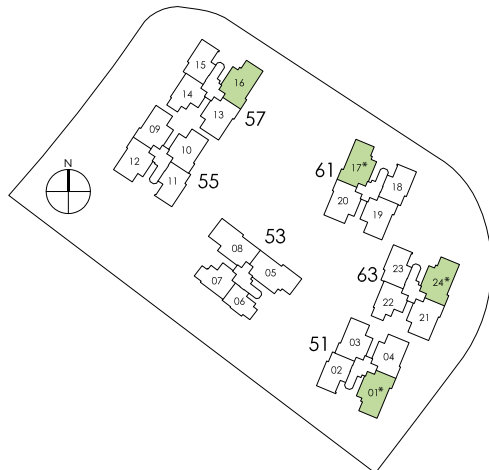


Area includes A/C ledge, balcony, PES, open terrace and void (where applicable). The plans are subject to change as may be required or approved by the relevant authorities. These are not drawn to scale and are for purpose of a visual representation of the different layouts that are available. All areas are approximate and subject to final survey. The developer and its agents cannot be held liable for any inaccuracies.

# 4 bedroom (dual key)

dual key C2-p1  
169 sqm / 1,819 sqft  
pool with jacuzzi / pond / garden \*  
#01-01  
#01-17  
#01-24 (mirrored unit)

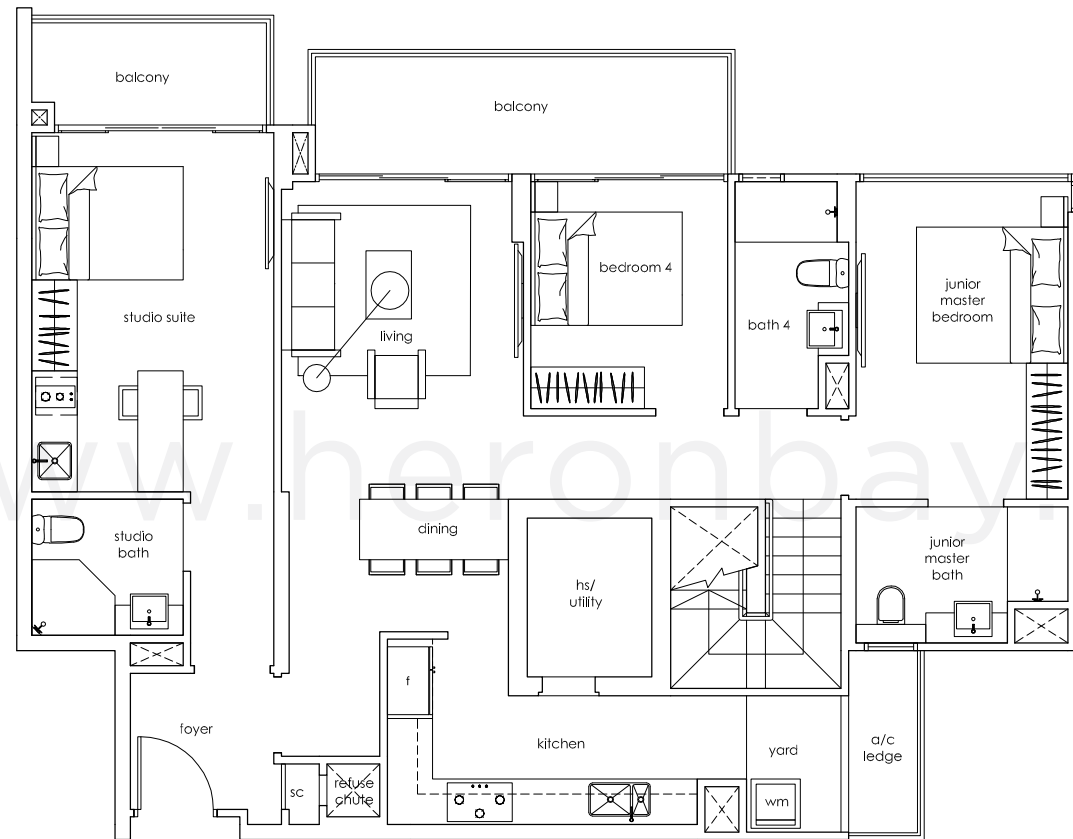
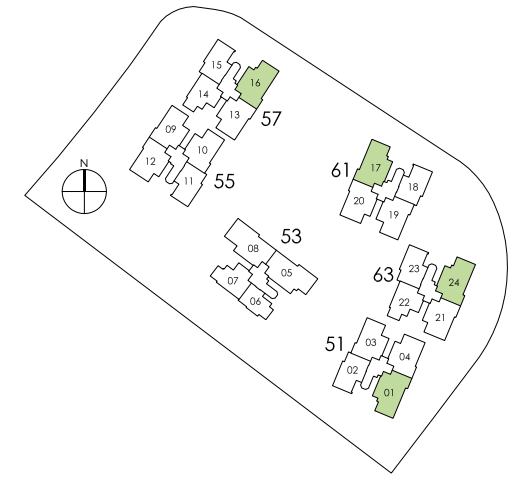
dual key C2-p2  
169 sqm / 1,819 sqft  
#01-16 (mirrored unit)



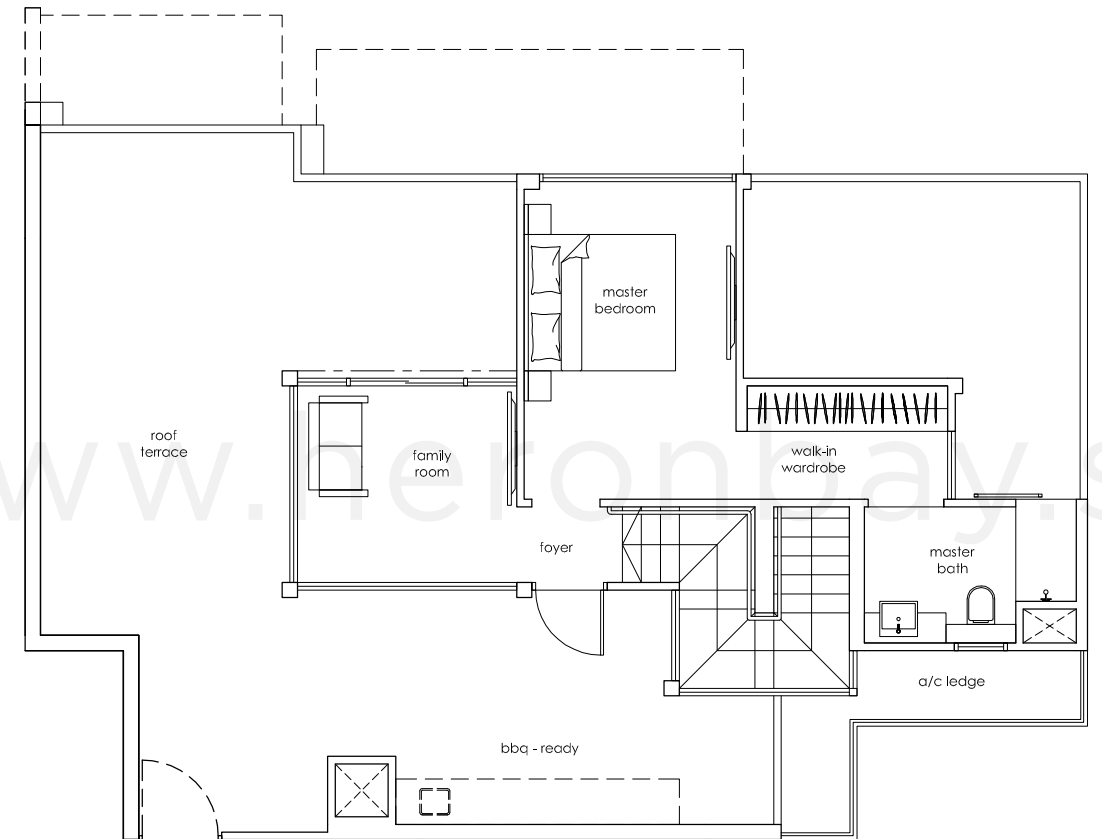
Area includes A/C ledge, balcony, PES, open terrace and void (where applicable). The plans are subject to change as may be required or approved by the relevant authorities. These are not drawn to scale and are for purpose of a visual representation of the different layouts that are available. All areas are approximate and subject to final survey. The developer and its agents cannot be held liable for any inaccuracies.

# 4+1 bedroom (dual key) penthouse

dual key PH5  
 240 sqm / 2,583 sqft  
 #17-01  
 #16-16 (mirrored unit)  
 #17-17  
 #17-24 (mirrored unit)



lower level



upper level

Area includes A/C ledge, balcony, PES, open terrace and void (where applicable). The plans are subject to change as may be required or approved by the relevant authorities. These are not drawn to scale and are for purpose of a visual representation of the different layouts that are available. All areas are approximate and subject to final survey. The developer and its agents cannot be held liable for any inaccuracies.

Area includes A/C ledge, balcony, PES, open terrace and void (where applicable). The plans are subject to change as may be required or approved by the relevant authorities. These are not drawn to scale and are for purpose of a visual representation of the different layouts that are available. All areas are approximate and subject to final survey. The developer and its agents cannot be held liable for any inaccuracies.