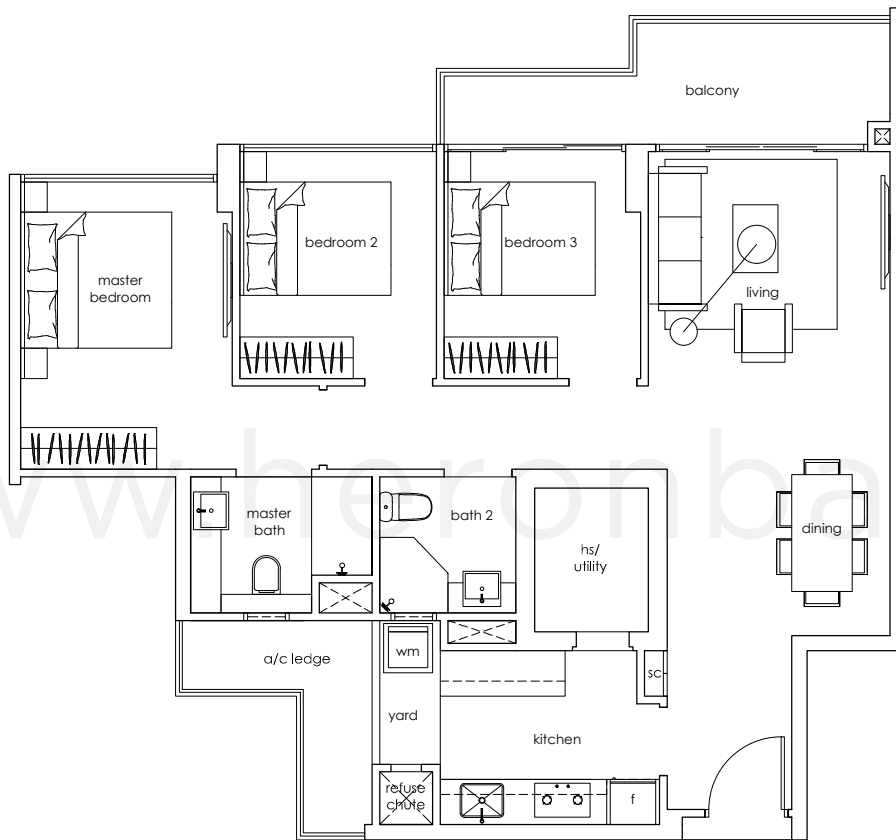
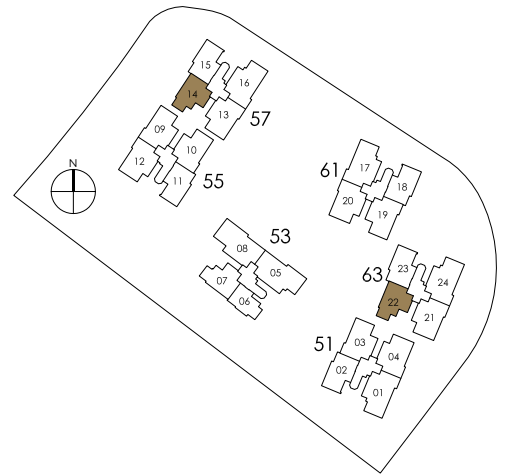


3 bedroom

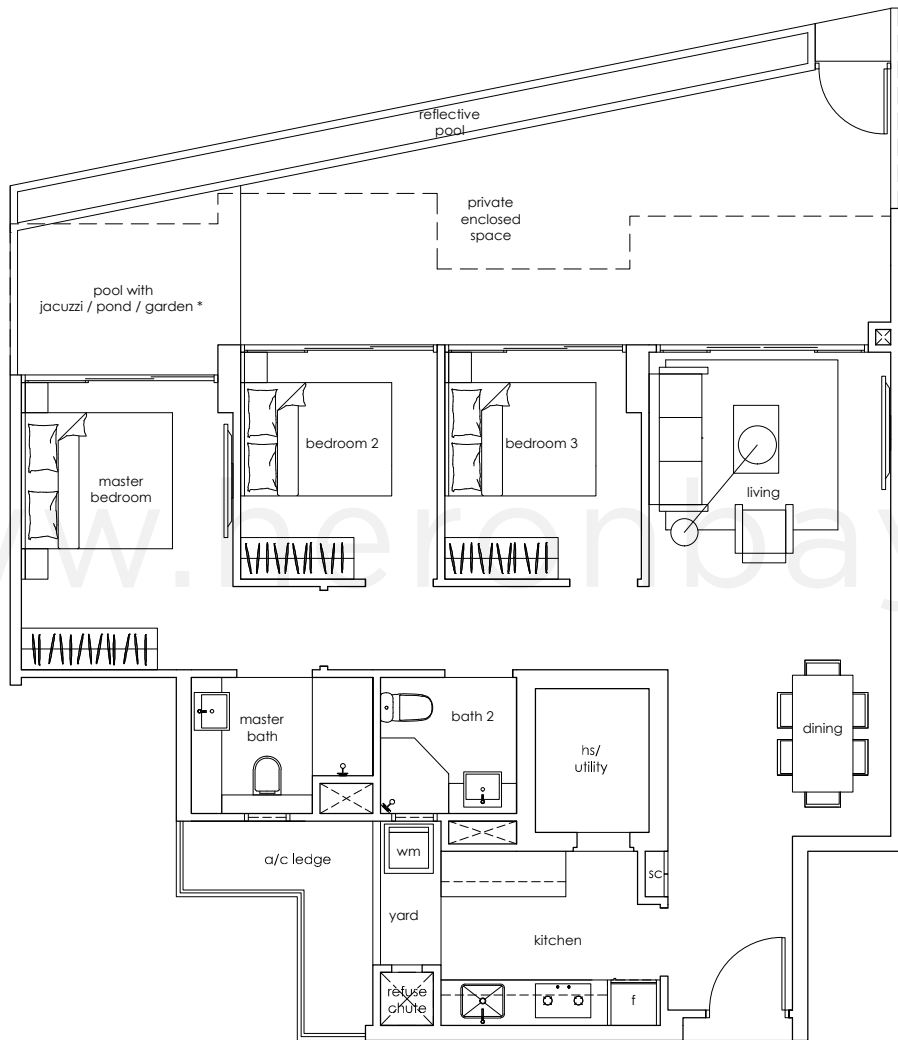
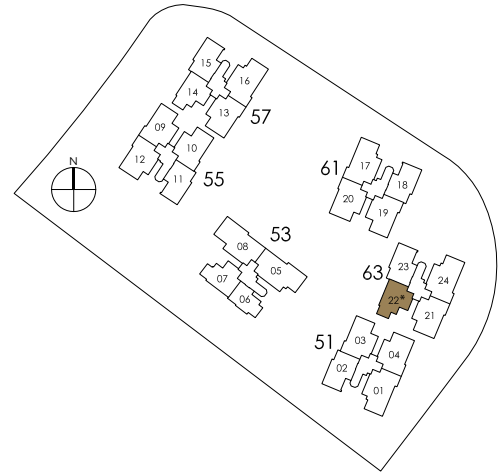
standard B1
95 sqm / 1,023 sqft
#03 to #16-14
#02 to #17-22



Area includes A/C ledge, balcony, PES, open terrace and void (where applicable). The plans are subject to change as may be required or approved by the relevant authorities. These are not drawn to scale and are for purpose of a visual representation of the different layouts that are available. All areas are approximate and subject to final survey. The developer and its agents cannot be held liable for any inaccuracies.

3 bedroom

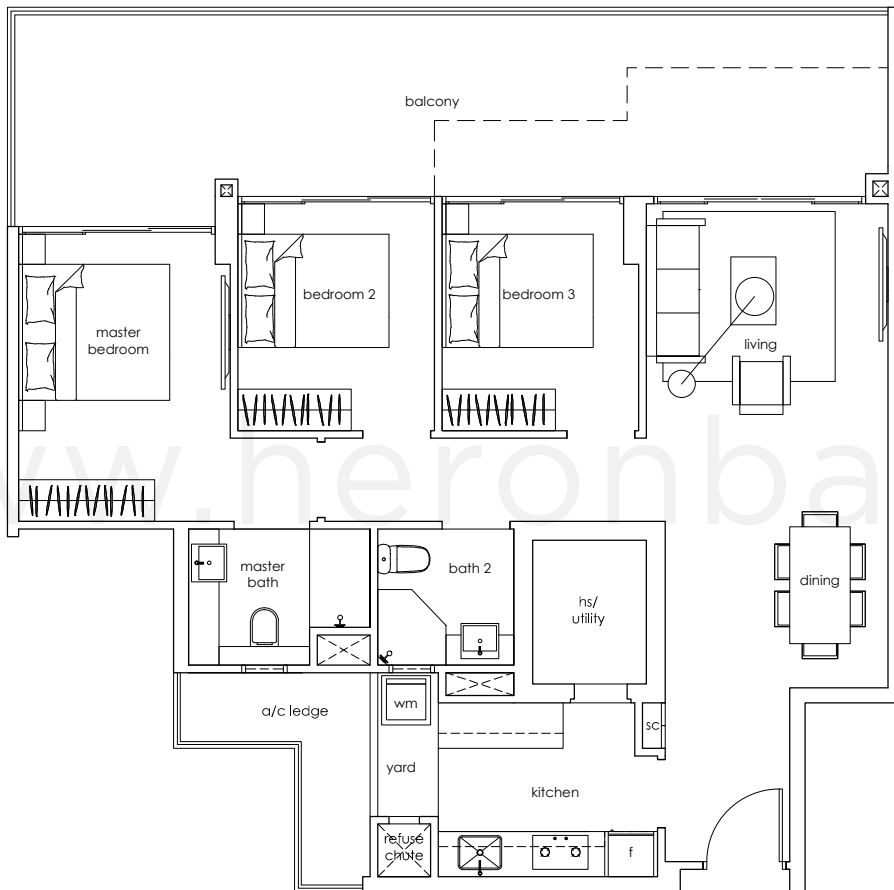
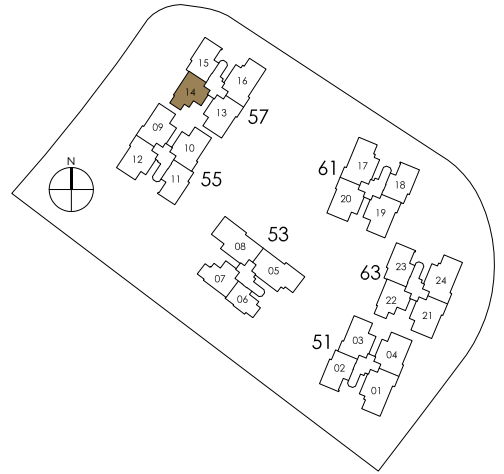
standard B1-p1
126 sqm / 1,356 sqft
pool with jacuzzi / pond / garden *
#01-22



Area includes A/C ledge, balcony, PES, open terrace and void (where applicable). The plans are subject to change as may be required or approved by the relevant authorities. These are not drawn to scale and are for purpose of a visual representation of the different layouts that are available. All areas are approximate and subject to final survey. The developer and its agents cannot be held liable for any inaccuracies.

3 bedroom

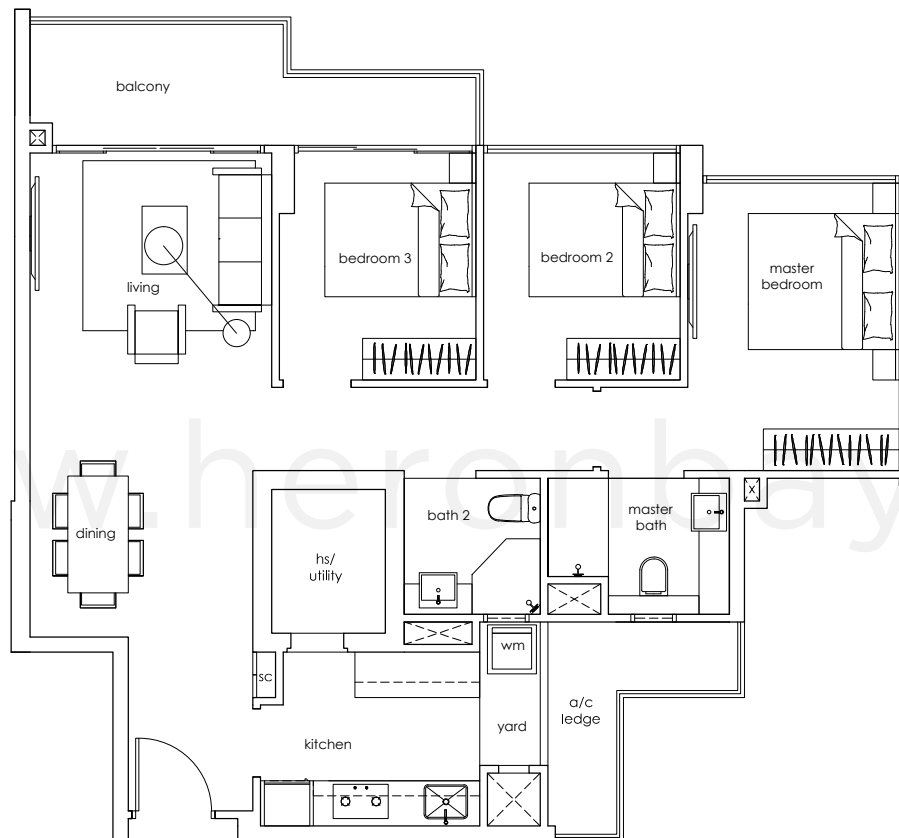
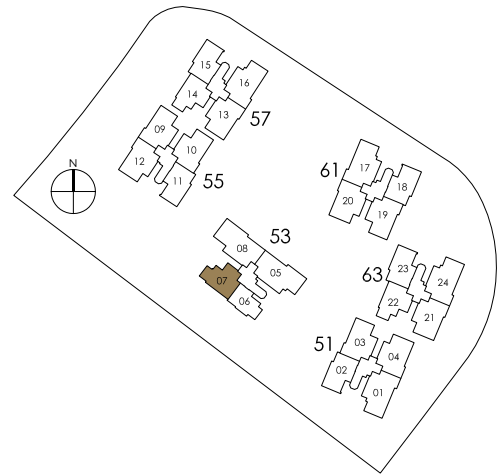
standard B1a
117 sqm / 1,259 sqft
#02-14



Area includes A/C ledge, balcony, PES, open terrace and void (where applicable). The plans are subject to change as may be required or approved by the relevant authorities. These are not drawn to scale and are for purpose of a visual representation of the different layouts that are available. All areas are approximate and subject to final survey. The developer and its agents cannot be held liable for any inaccuracies.

3 bedroom

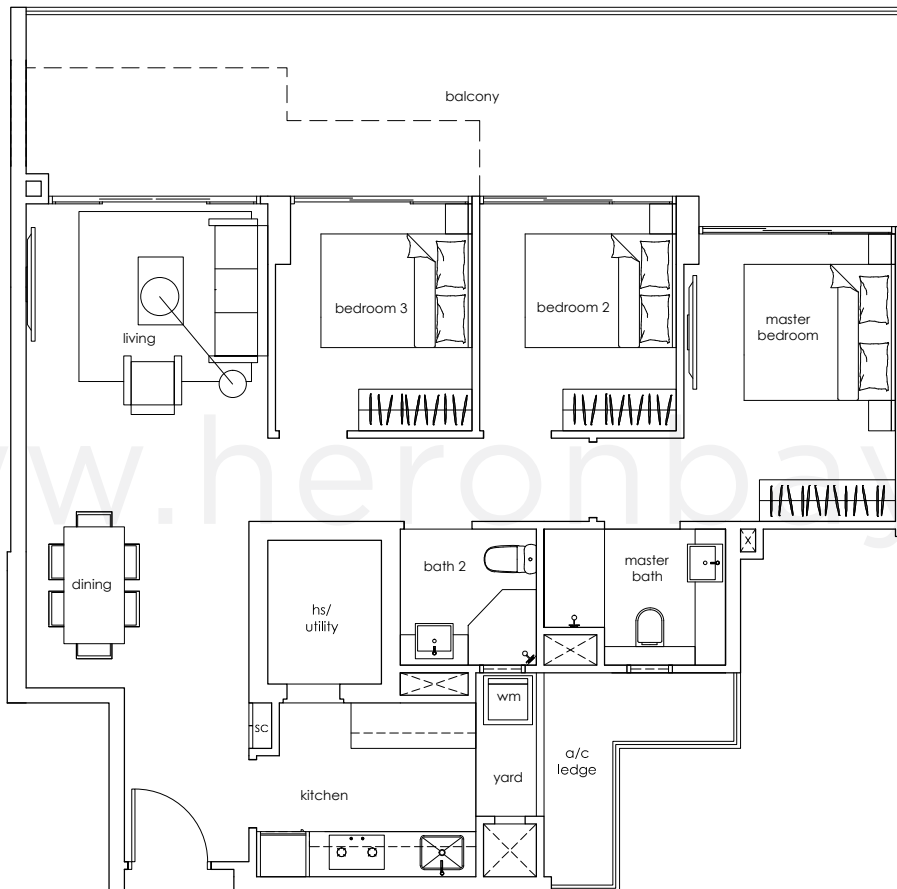
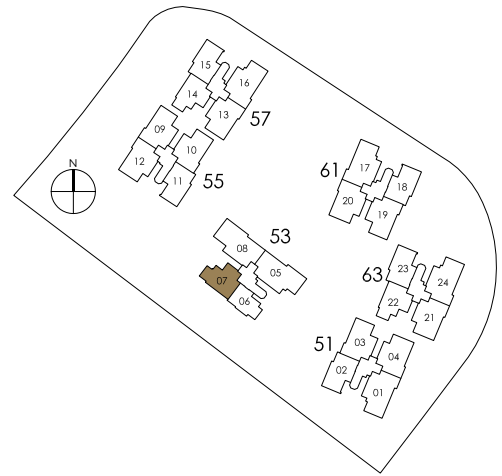
standard B2
95 sqm / 1,023 sqft
#03 to #16-07



Area includes A/C ledge, balcony, PES, open terrace and void (where applicable). The plans are subject to change as may be required or approved by the relevant authorities. These are not drawn to scale and are for purpose of a visual representation of the different layouts that are available. All areas are approximate and subject to final survey. The developer and its agents cannot be held liable for any inaccuracies.

3 bedroom

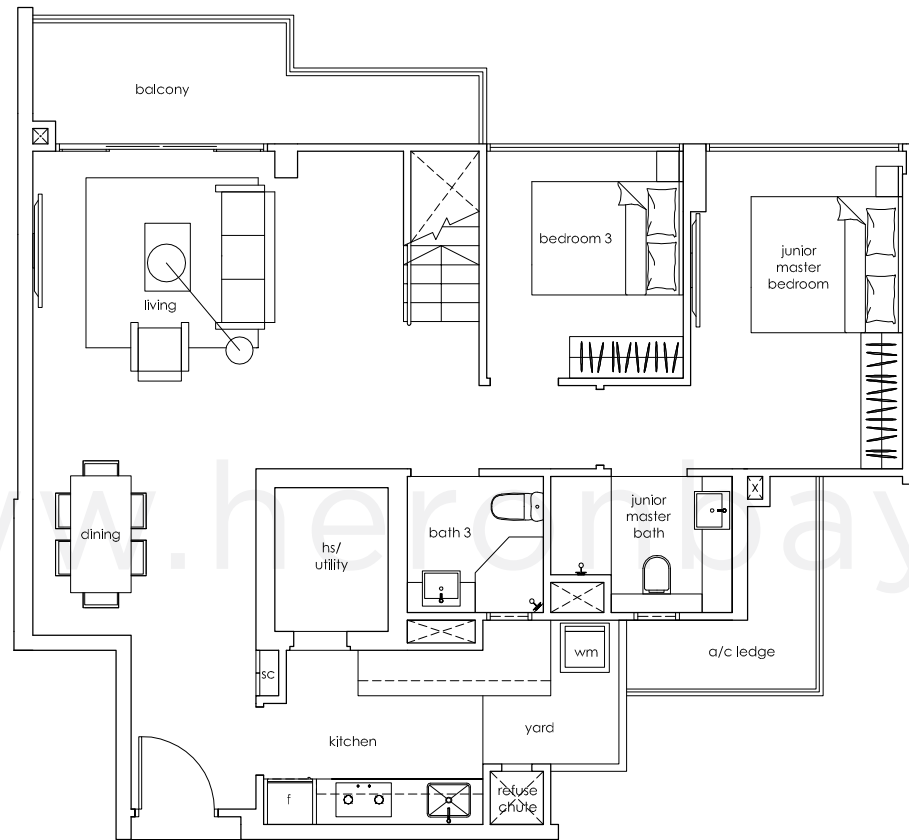
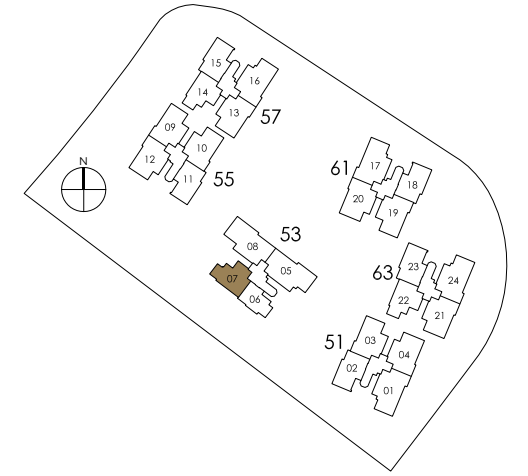
standard B2a
117 sqm / 1,259 sqft
#02-07



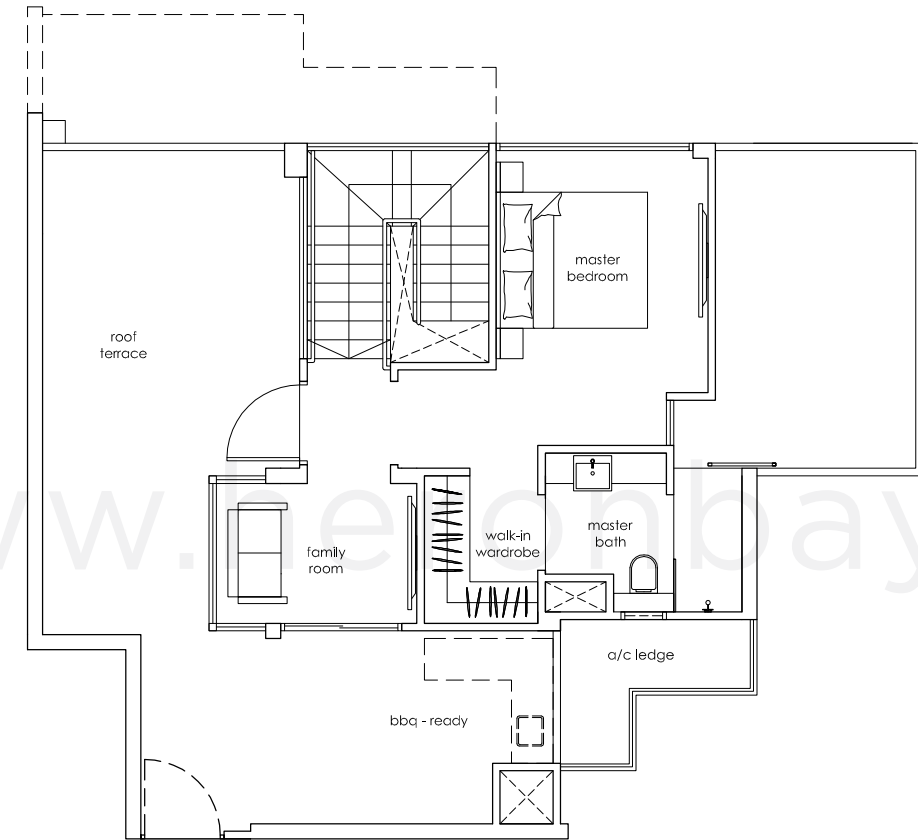
Area includes A/C ledge, balcony, PES, open terrace and void (where applicable). The plans are subject to change as may be required or approved by the relevant authorities. These are not drawn to scale and are for purpose of a visual representation of the different layouts that are available. All areas are approximate and subject to final survey. The developer and its agents cannot be held liable for any inaccuracies.

3+1 bedroom penthouse

standard PH1
185 sqm / 1,991 sqft
#17-07



lower level



upper level

Area includes A/C ledge, balcony, PES, open terrace and void (where applicable). The plans are subject to change as may be required or approved by the relevant authorities. These are not drawn to scale and are for purpose of a visual representation of the different layouts that are available. All areas are approximate and subject to final survey. The developer and its agents cannot be held liable for any inaccuracies.

Area includes A/C ledge, balcony, PES, open terrace and void (where applicable). The plans are subject to change as may be required or approved by the relevant authorities. These are not drawn to scale and are for purpose of a visual representation of the different layouts that are available. All areas are approximate and subject to final survey. The developer and its agents cannot be held liable for any inaccuracies.

3 bedroom

standard B3

96 sqm / 1,033 sqft

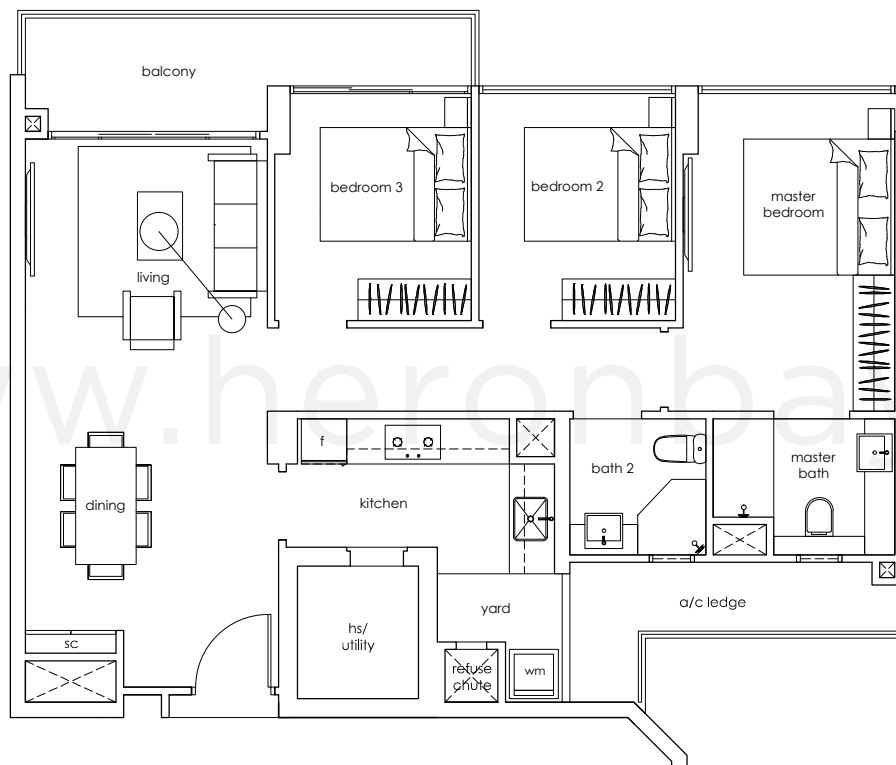
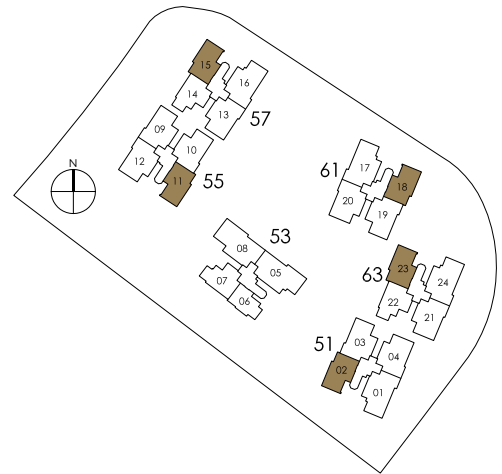
#02 to #17-02 (mirrored units)

#02 to #16-11

#03 to #15-15

#02 to #16-18 (mirrored units)

#02 to #16-23

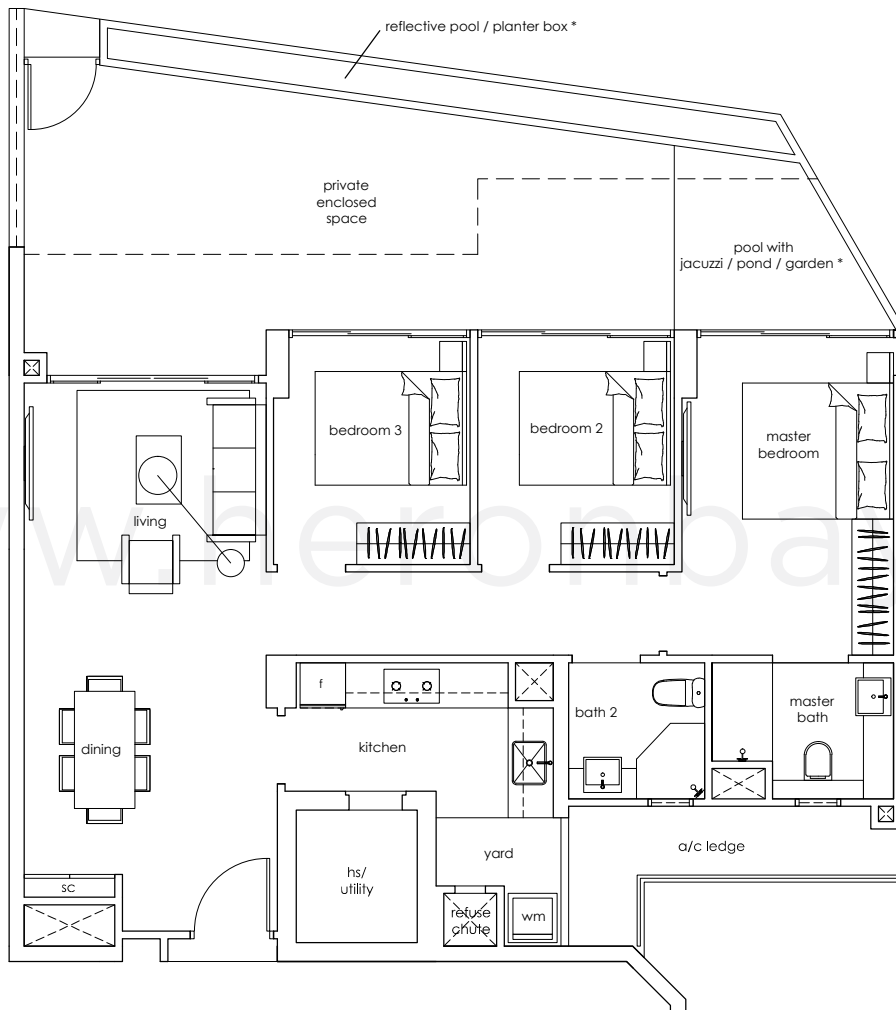
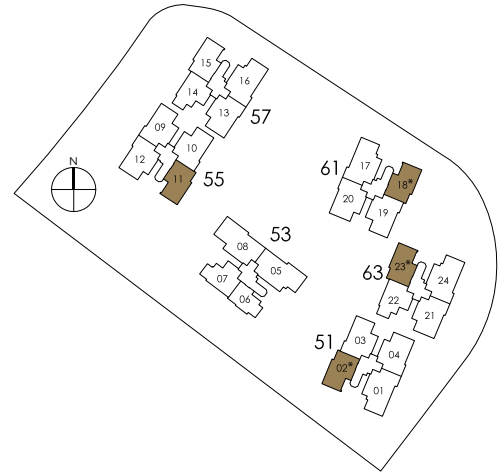


Area includes A/C ledge, balcony, PES, open terrace and void (where applicable). The plans are subject to change as may be required or approved by the relevant authorities. These are not drawn to scale and are for purpose of a visual representation of the different layouts that are available. All areas are approximate and subject to final survey. The developer and its agents cannot be held liable for any inaccuracies.

3 bedroom

standard B3-p1
128 sqm / 1,378 sqft
pool with jacuzzi / pond / garden *
#01-02 (mirrored unit)
#01-18 (mirrored unit)
#01-23

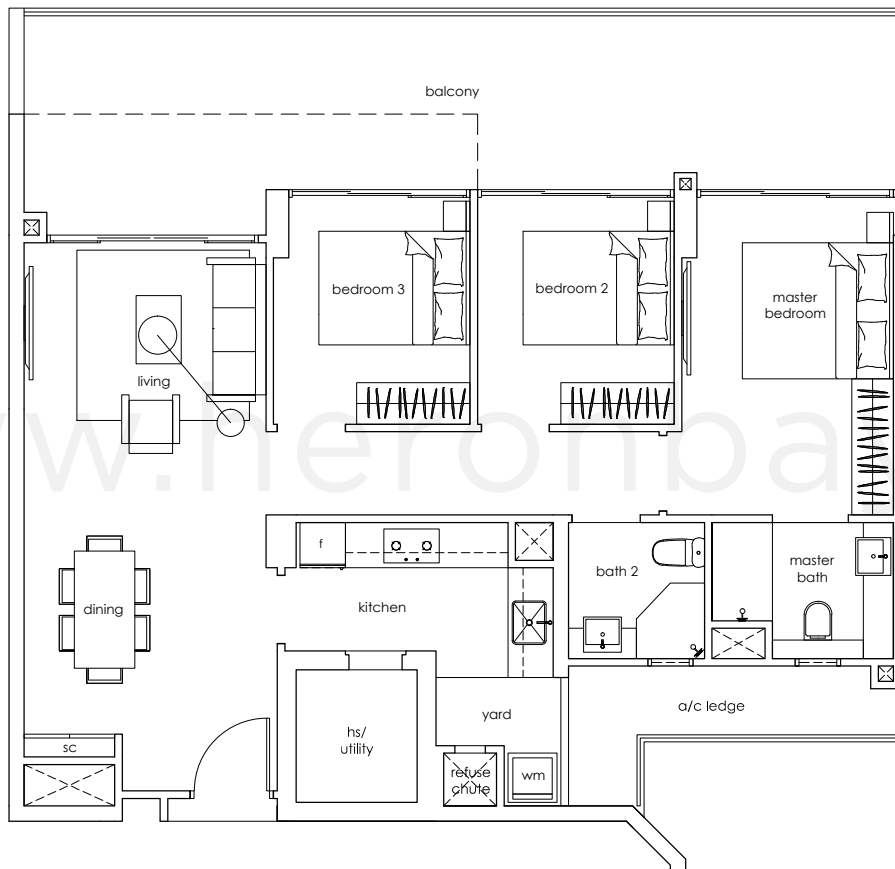
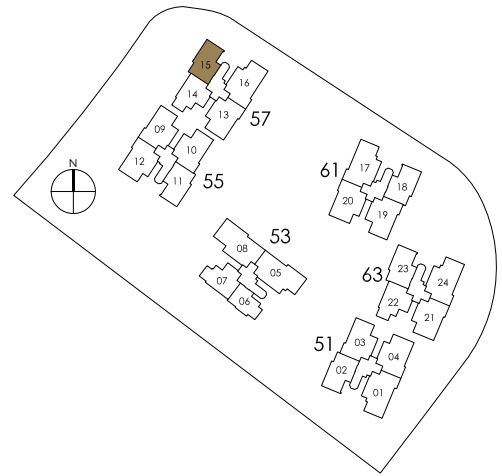
standard B3-p2
128 sqm / 1,378 sqft
#01-11



Area includes A/C ledge, balcony, PES, open terrace and void (where applicable). The plans are subject to change as may be required or approved by the relevant authorities. These are not drawn to scale and are for purpose of a visual representation of the different layouts that are available. All areas are approximate and subject to final survey. The developer and its agents cannot be held liable for any inaccuracies.

3 bedroom

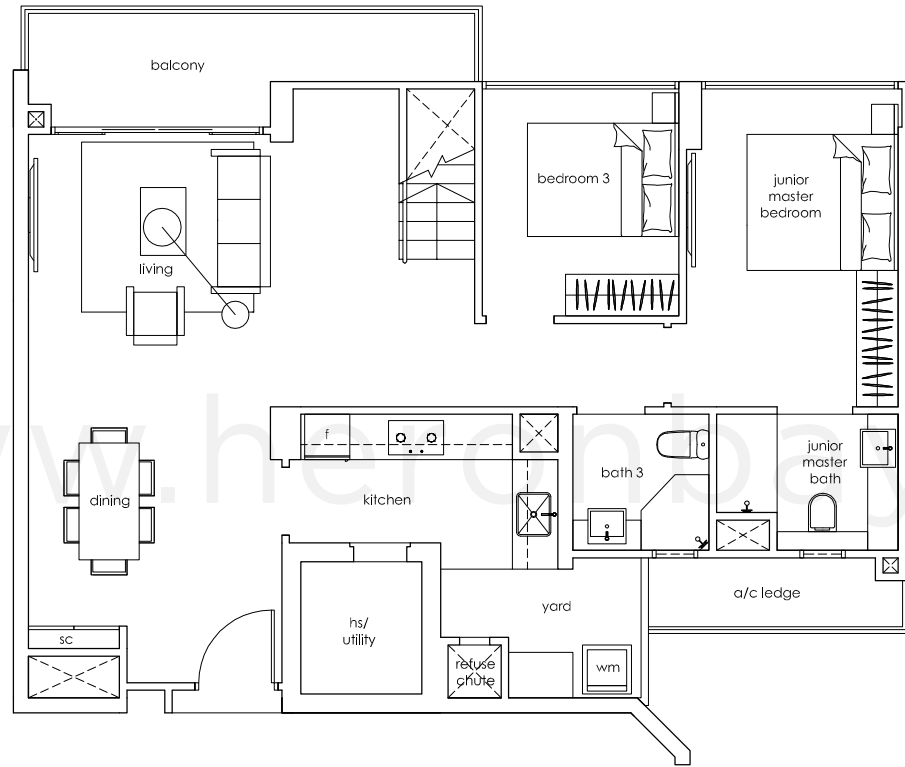
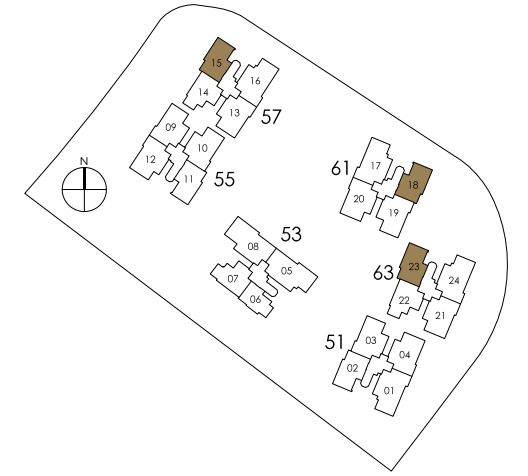
standard B3a
118 sqm / 1,270 sqft
#02-15



Area includes A/C ledge, balcony, PES, open terrace and void (where applicable). The plans are subject to change as may be required or approved by the relevant authorities. These are not drawn to scale and are for purpose of a visual representation of the different layouts that are available. All areas are approximate and subject to final survey. The developer and its agents cannot be held liable for any inaccuracies.

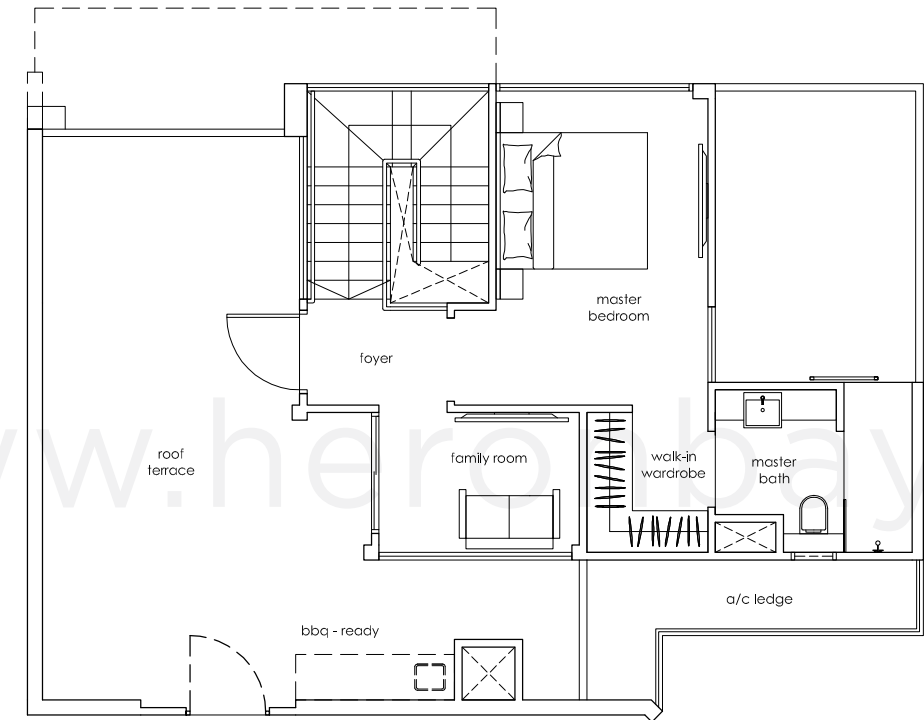
3+1 bedroom penthouse

standard PH2
 186 sqm / 2,002 sqft
 #16-15
 #17-18 (mirrored unit)
 #17-23



lower level

Area includes A/C ledge, balcony, PES, open terrace and void (where applicable). The plans are subject to change as may be required or approved by the relevant authorities. These are not drawn to scale and are for purpose of a visual representation of the different layouts that are available. All areas are approximate and subject to final survey. The developer and its agents cannot be held liable for any inaccuracies.



upper level

Area includes A/C ledge, balcony, PES, open terrace and void (where applicable). The plans are subject to change as may be required or approved by the relevant authorities. These are not drawn to scale and are for purpose of a visual representation of the different layouts that are available. All areas are approximate and subject to final survey. The developer and its agents cannot be held liable for any inaccuracies.