

3 bedroom (dual key)

dual key B4

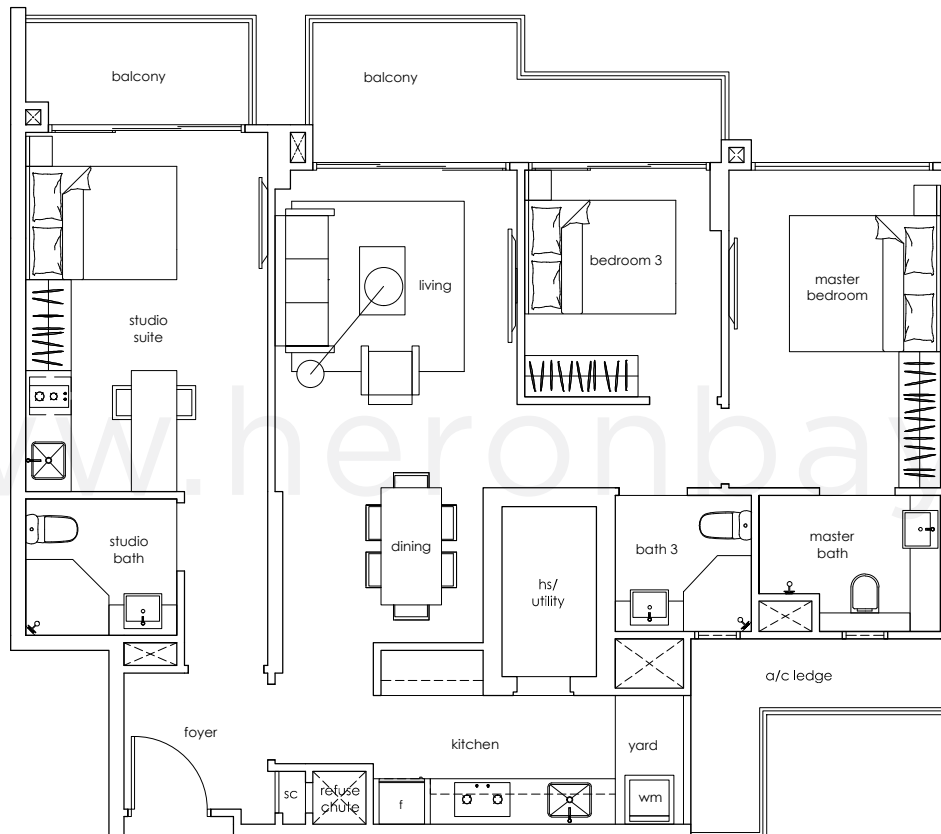
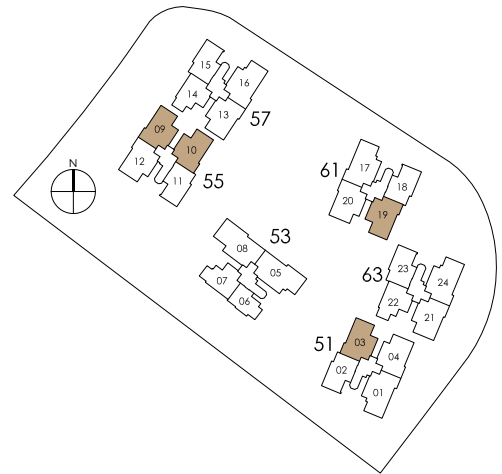
114 sqm / 1,227 sqft

#02 to #16-03

#03 to #15-09

#02 to #15-10 (mirrored units)

#02 to #16-19



Area includes A/C ledge, balcony, PES, open terrace and void (where applicable). The plans are subject to change as may be required or approved by the relevant authorities. These are not drawn to scale and are for purpose of a visual representation of the different layouts that are available. All areas are approximate and subject to final survey. The developer and its agents cannot be held liable for any inaccuracies.

3 bedroom (dual key)

dual key B4-p1

147 sqm / 1,582 sqft

pool with jacuzzi / pond / garden *

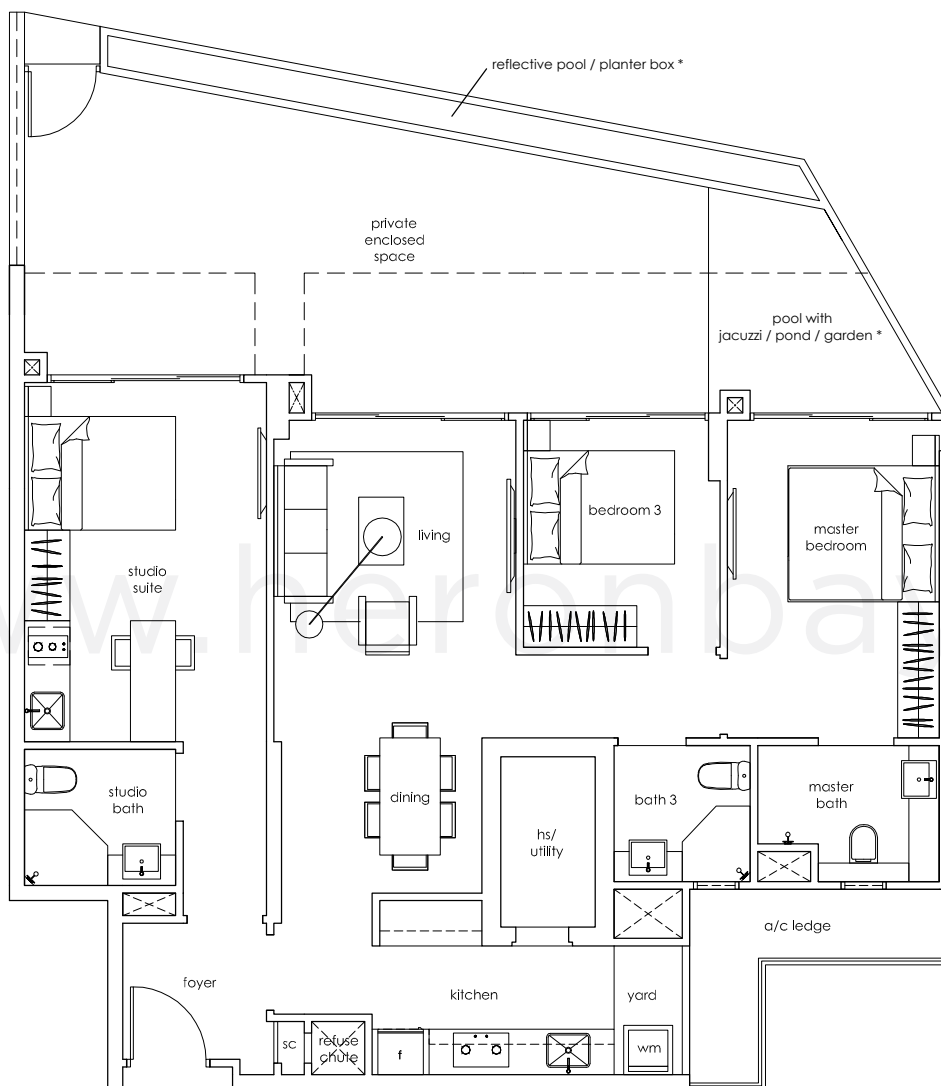
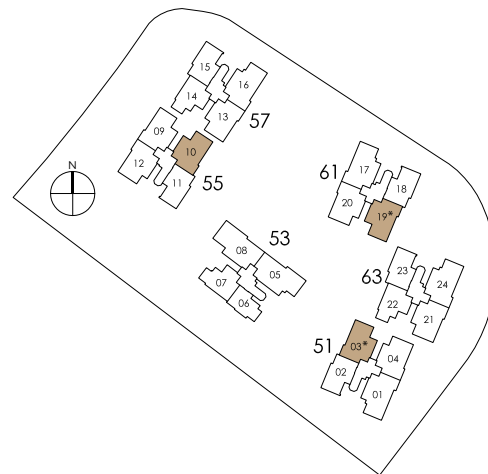
#01-03

#01-19

dual key B4-p2

147 sqm / 1,582 sqft

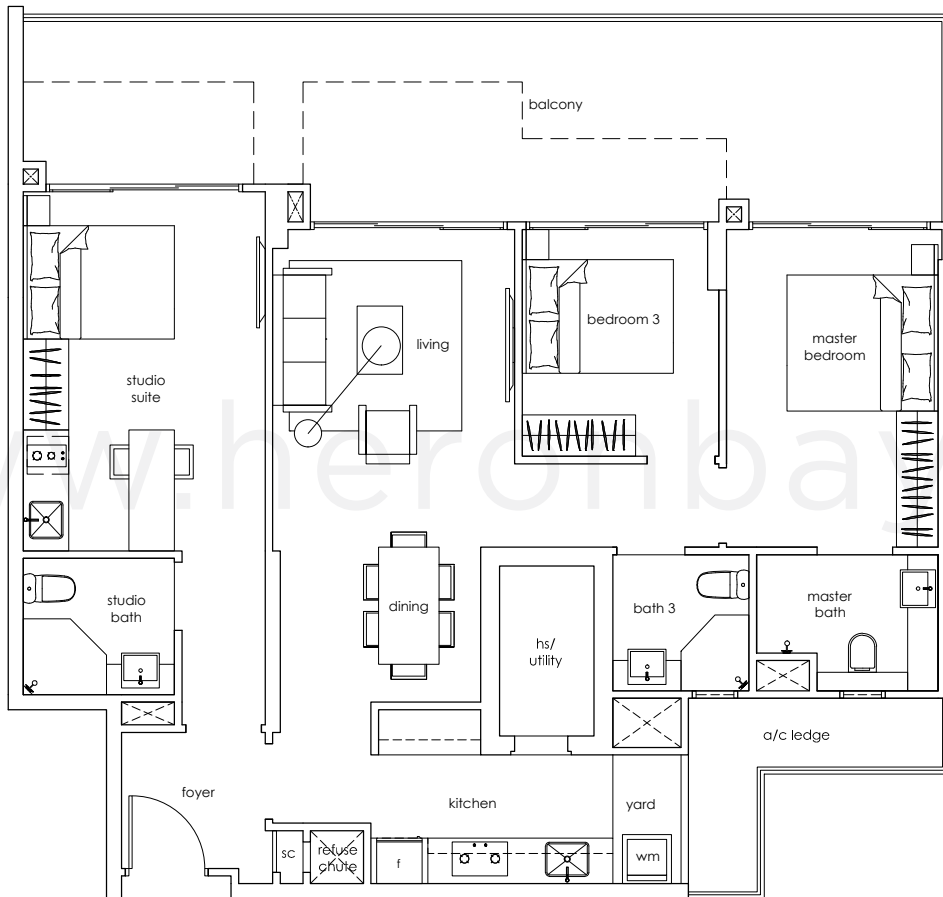
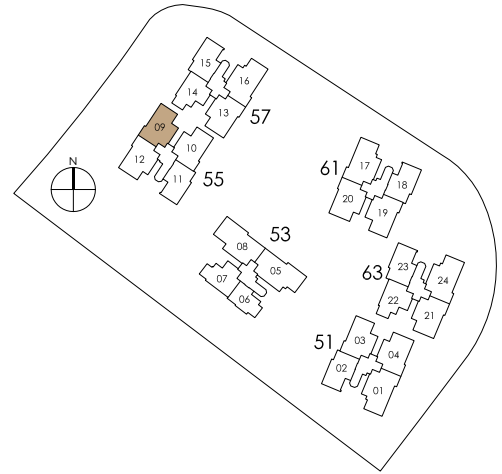
#01-10



Area includes A/C ledge, balcony, PES, open terrace and void (where applicable). The plans are subject to change as may be required or approved by the relevant authorities. These are not drawn to scale and are for purpose of a visual representation of the different layouts that are available. All areas are approximate and subject to final survey. The developer and its agents cannot be held liable for any inaccuracies.

3 bedroom (dual key)

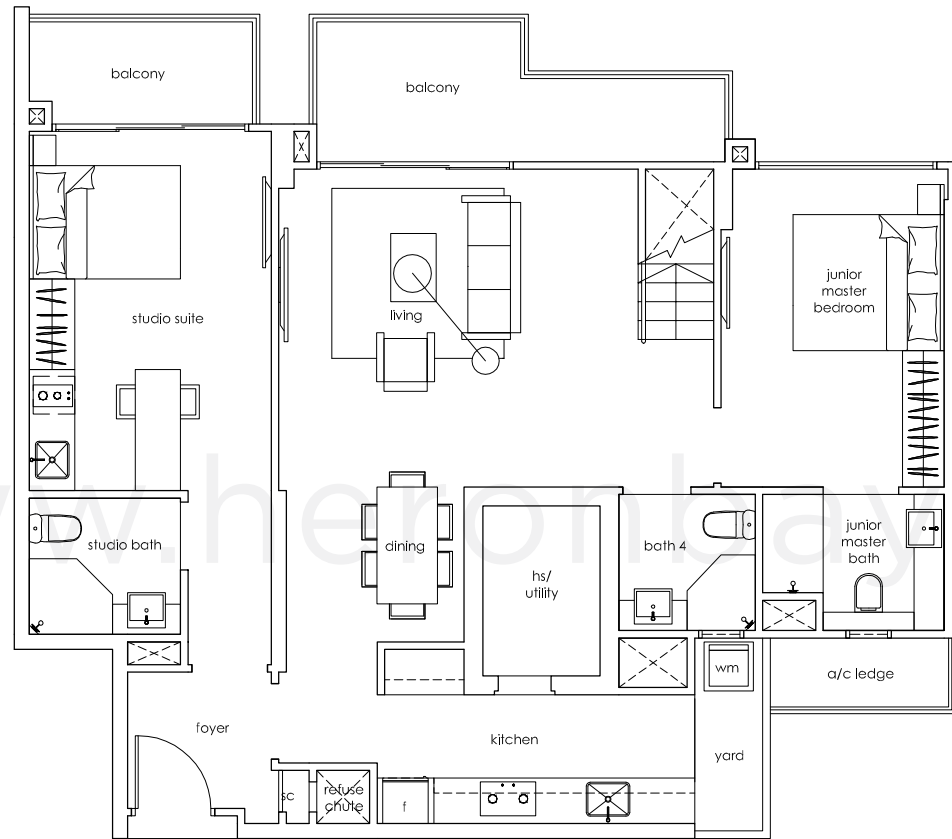
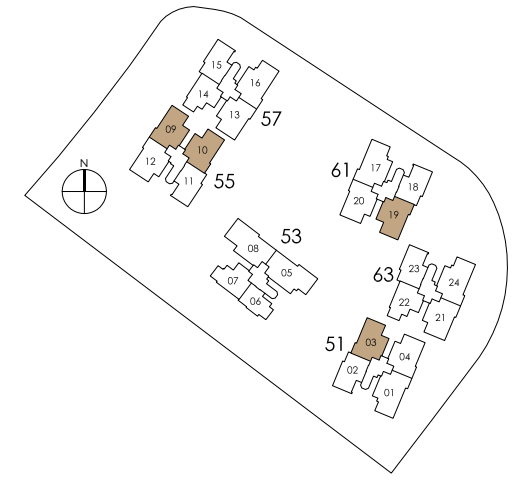
dual key B4a
133 sqm / 1,432 sqft
#02-09



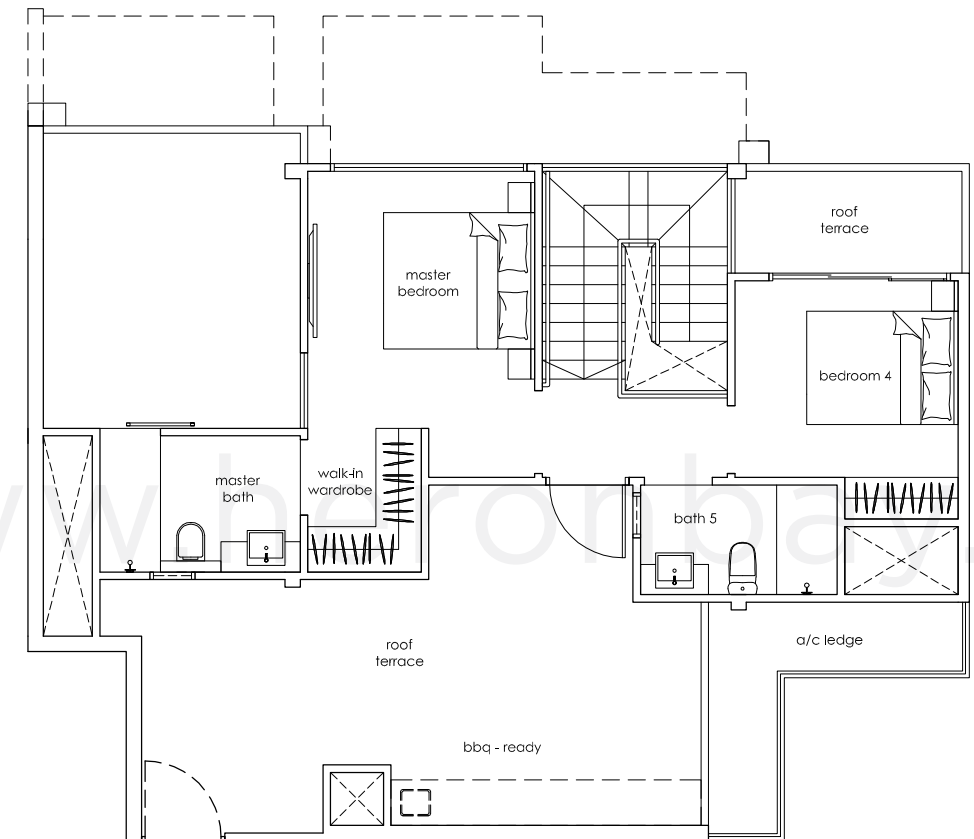
Area includes A/C ledge, balcony, PES, open terrace and void (where applicable). The plans are subject to change as may be required or approved by the relevant authorities. These are not drawn to scale and are for purpose of a visual representation of the different layouts that are available. All areas are approximate and subject to final survey. The developer and its agents cannot be held liable for any inaccuracies.

4 bedroom penthouse

dual key PH3
 211 sqm / 2,271 sqft
 #17-03
 #16-09
 #16-10 (mirrored unit)
 #17-19



lower level



upper level

Area includes A/C ledge, balcony, PES, open terrace and void (where applicable). The plans are subject to change as may be required or approved by the relevant authorities. These are not drawn to scale and are for purpose of a visual representation of the different layouts that are available. All areas are approximate and subject to final survey. The developer and its agents cannot be held liable for any inaccuracies.

Area includes A/C ledge, balcony, PES, open terrace and void (where applicable). The plans are subject to change as may be required or approved by the relevant authorities. These are not drawn to scale and are for purpose of a visual representation of the different layouts that are available. All areas are approximate and subject to final survey. The developer and its agents cannot be held liable for any inaccuracies.