

eight  
O courtyards

*Intimate Outdoor Spaces*

**TOWER D1**  
10 CANBERRA DRIVE

FLR	UNIT	13	14	15	16
14	C8a #14-13 (105 sqm/ 1130 sqft)			C7 #14-15 (101 sqm/ 1087 sqft)	D1 #14-16 (128 sqm/ 1378 sqft)
13	C8a #13-13 (105 sqm/ 1130 sqft)	B4 #13-14 (80 sqm/ 861 sqft)		C7 #13-15 (101 sqm/ 1087 sqft)	D1 #13-16 (128 sqm/ 1378 sqft)
12	C8a #12-13 (105 sqm/ 1130 sqft)	B4 #12-14 (80 sqm/ 861 sqft)		C7 #12-15 (101 sqm/ 1087 sqft)	D1 #12-16 (128 sqm/ 1378 sqft)
11	C8a #11-13 (105 sqm/ 1130 sqft)	B4 #11-14 (80 sqm/ 861 sqft)		C7 #11-15 (101 sqm/ 1087 sqft)	D1 #11-16 (128 sqm/ 1378 sqft)
10	C8a #10-13 (105 sqm/ 1130 sqft)	B4 #10-14 (80 sqm/ 861 sqft)		C7 #10-15 (101 sqm/ 1087 sqft)	D1 #10-16 (128 sqm/ 1378 sqft)
9	C8a #09-13 (105 sqm/ 1130 sqft)	B4 #09-14 (80 sqm/ 861 sqft)		C7 #09-15 (101 sqm/ 1087 sqft)	D1 #09-16 (128 sqm/ 1378 sqft)
8	C8a #08-13 (105 sqm/ 1130 sqft)	B4 #08-14 (80 sqm/ 861 sqft)		C7 #08-15 (101 sqm/ 1087 sqft)	D1 #08-16 (128 sqm/ 1378 sqft)
7	C8a #07-13 (105 sqm/ 1130 sqft)	B4 #07-14 (80 sqm/ 861 sqft)		C7 #07-15 (101 sqm/ 1087 sqft)	D1 #07-16 (128 sqm/ 1378 sqft)
6	C8a #06-13 (105 sqm/ 1130 sqft)	B4 #06-14 (80 sqm/ 861 sqft)		C7 #06-15 (101 sqm/ 1087 sqft)	D1 #06-16 (128 sqm/ 1378 sqft)
5	C8a #05-13 (105 sqm/ 1130 sqft)	B4 #05-14 (80 sqm/ 861 sqft)		C7 #05-15 (101 sqm/ 1087 sqft)	D1 #05-16 (128 sqm/ 1378 sqft)
4	C8a #04-13 (105 sqm/ 1130 sqft)	B4 #04-14 (80 sqm/ 861 sqft)		C7 #04-15 (101 sqm/ 1087 sqft)	D1 #04-16 (128 sqm/ 1378 sqft)
3	C8a #03-13 (105 sqm/ 1130 sqft)	B4 #03-14 (80 sqm/ 861 sqft)		C7 #03-15 (101 sqm/ 1087 sqft)	D1 #03-16 (128 sqm/ 1378 sqft)
2	C8a #02-13 (105 sqm/ 1130 sqft)	B4 #02-14 (80 sqm/ 861 sqft)		C7 #02-15 (101 sqm/ 1087 sqft)	D1 #02-16 (128 sqm/ 1378 sqft)
1	C8aP #01-13 (115 sqm/ 1238 sqft)	B4P #01-14 (90 sqm/ 969 sqft)		C7P #01-15 (120 sqm/ 1292 sqft)	D1P #01-16 (165 sqm/ 1776 sqft)
Basement	LANDSCAPE DECK				

2 Bedroom
  4 Bedroom  
 3 Bedroom + Utility



When nature's tranquility meets cosmopolitan comforts, it's a dream come true.

## What's Around You.

### Thematic Courtyards

1. Vigour Courtyard
2. Serenity Courtyard
3. Discovery Courtyard
4. Inspiration Courtyard
5. Play Courtyard
6. Spa Courtyard
7. Wellness Courtyard
8. Harmony Courtyard

### Central Court

- A. Forecourt Plaza
- B. Clubhouse
- C. Promenade
- D. Palm Oasis
- E. Spa Dining Pavilion
- F. Hydro-vitality Gym
- G. Gym
- H. 50m Lap Pool
- I. Splash Cove

### Leisure & Entertainment

- J. Children's Playground
- K. BBQ Pavilion
- L. Rainforest Fitness Trail
- M. Merry Treehouse
- N. Multi-purpose Court
- O. Kid's Corner
- P. Tennis Court
- Q. Bliss Spa Pavilion
- R. Rest Pavilion

### Thematic Gardens

- S. Zen Garden
- T. Mediterranean Grove
- U. Tropical Paradise

### Others

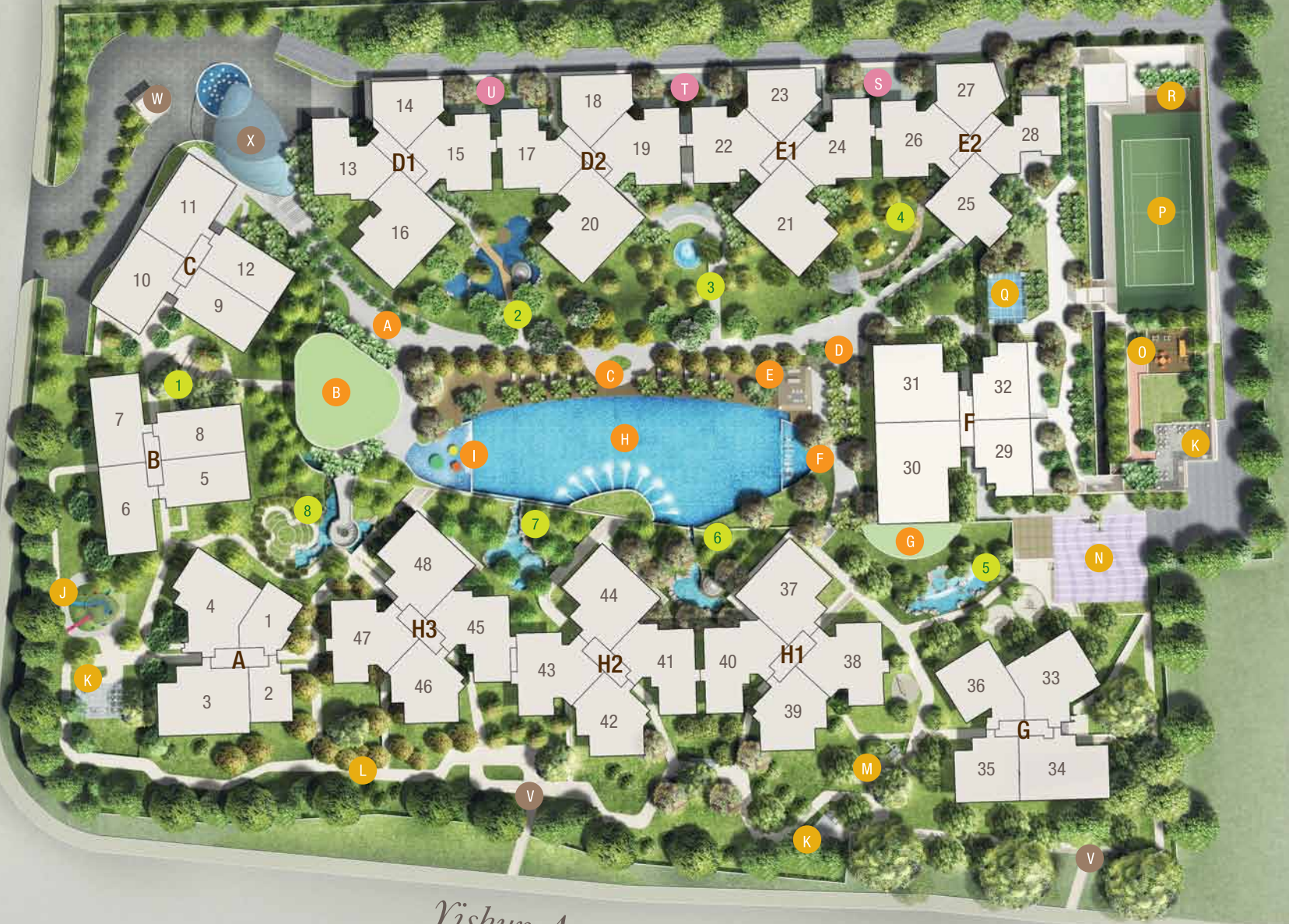
- V. Side Gate
- W. Guardhouse
- X. Drop-off Porch

  
*Intimate Outdoor Spaces*

Canberra Drive

Yishun Avenue 2

Yishun Avenue 7

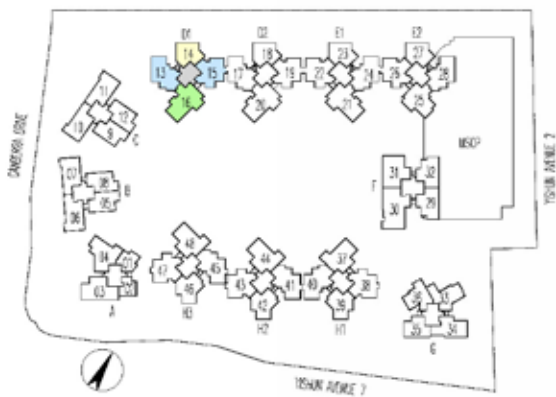




*Serenity Courtyard*

# 1ST STOREY PLAN

# TOWER D1



# 2ND - 13TH STOREY PLAN

# TOWER D1



# 14TH STOREY PLAN

# TOWER D1



Developer : Yishun Gold Pte Ltd (Company UEN No. 201016945R)  
Lot No. : Lot 3149K Mukim 19  
Tenure : Leasehold estate of 99 years commencing from 20th September 2010  
Developer's License No. : C0748  
Building Plan No. : A1987-00081-2010-BP01 dated 4th April 2011  
Expected Date of TOP : 30th September 2015  
Expected Date of Legal Completion : 30th September 2018

While every reasonable care has been taken in preparing this brochure and in constructing the models and showflats, the Developer and the Marketing Agent(s) cannot be held responsible for any inaccuracies or omissions. Visual representations, models, showflat displays and illustrations, photographs, art renderings and other graphic representations and references are intended to portray only artistic impressions of the development and cannot be regarded as representations of fact. Floor areas are approximate measurements and are subject to final survey. The property is subject to final inspection by the relevant authorities to comply with the current codes of practice.

All information, specifications, rendering, visual representations and plans are current at the time of publication and are subject to change as may be required by us and/or the competent authorities, and shall not form part of any offer or contract nor constitute any warranty by us and shall not be regarded as statements or representations of fact. All plans are subject to amendments as directed and/or approved by the building authorities. All areas are approximate measurements only and subject to final survey. The Sale and Purchase Agreement shall form the entire agreement between us as the Developer and the Purchaser, and shall supersede all statements, representations or promises made prior to the signing of Sale and Purchase Agreement and shall in no way be modified by any statements, representations of promises made by us or the Marketing Agent (s).

Jointly Developed By:



**Far East Organization**  
INSPIRING BETTER LIVES

**Call 6481 8802 6273 2122**  
**[www.8courtyards.com](http://www.8courtyards.com)**