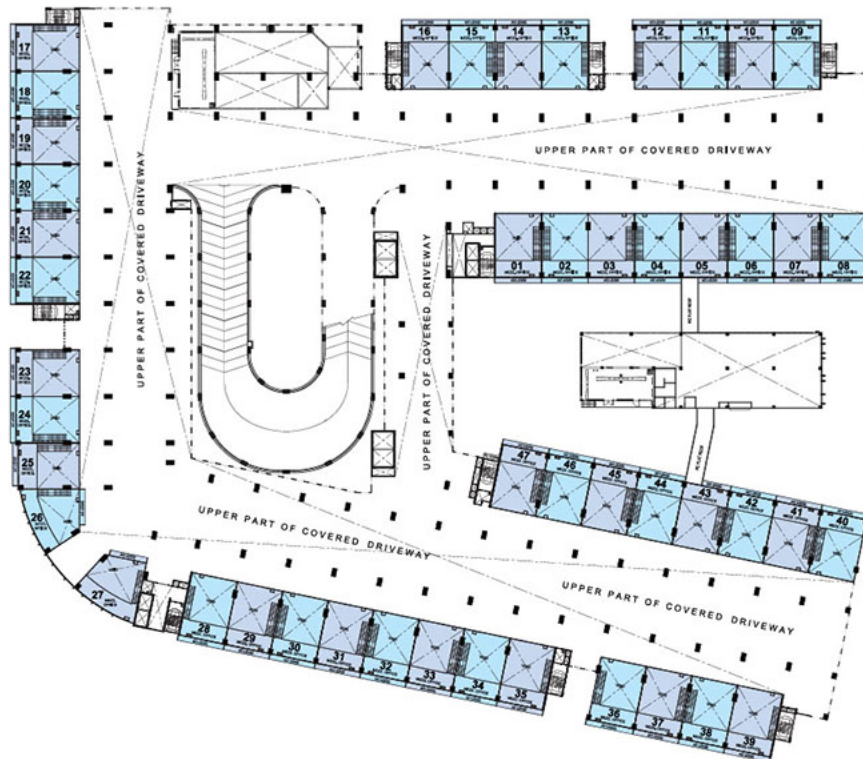


1ST STOREY (MEZZANINE)



Note: All plans are meant for information only and may be changed at the sole discretion of the architect.

1ST STOREY (PRODUCTION UNITS)

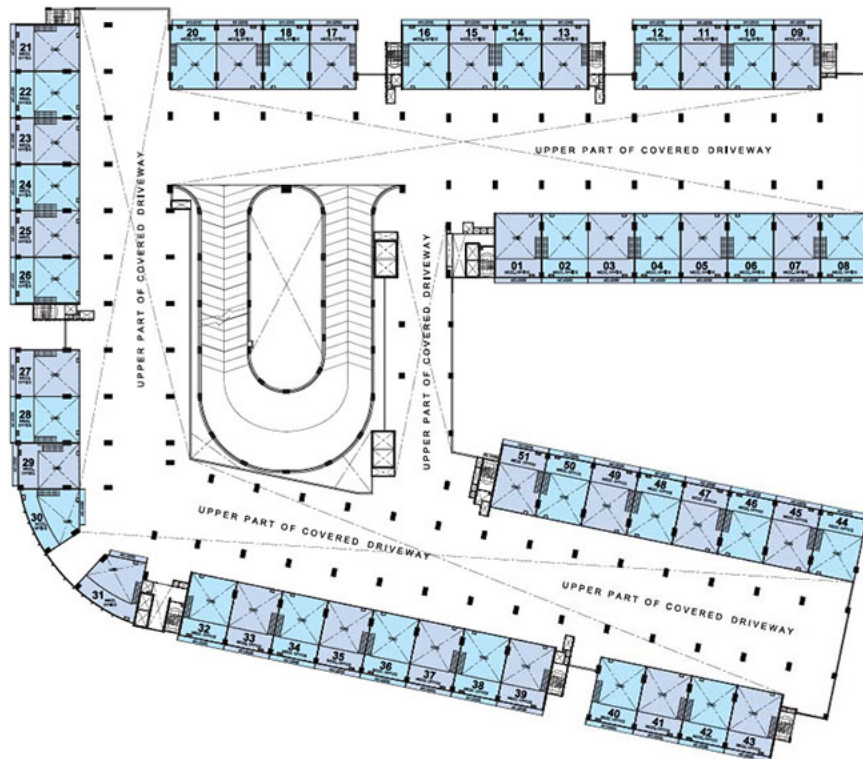


Note: (1) Typical units area 232sqm, except #01-05 (228sqm), #01-25 (223sqm), #01-26 (215sqm), #01-43 (228sqm), and staff canteen #01-48 (436sqm).

(2) Unit area includes void, mezzanine office & a/c ledges on mezzanine office.

(3) All plans are meant for information only and may be changed at the sole discretion of the architect.

2ND STOREY (MEZZANINE)



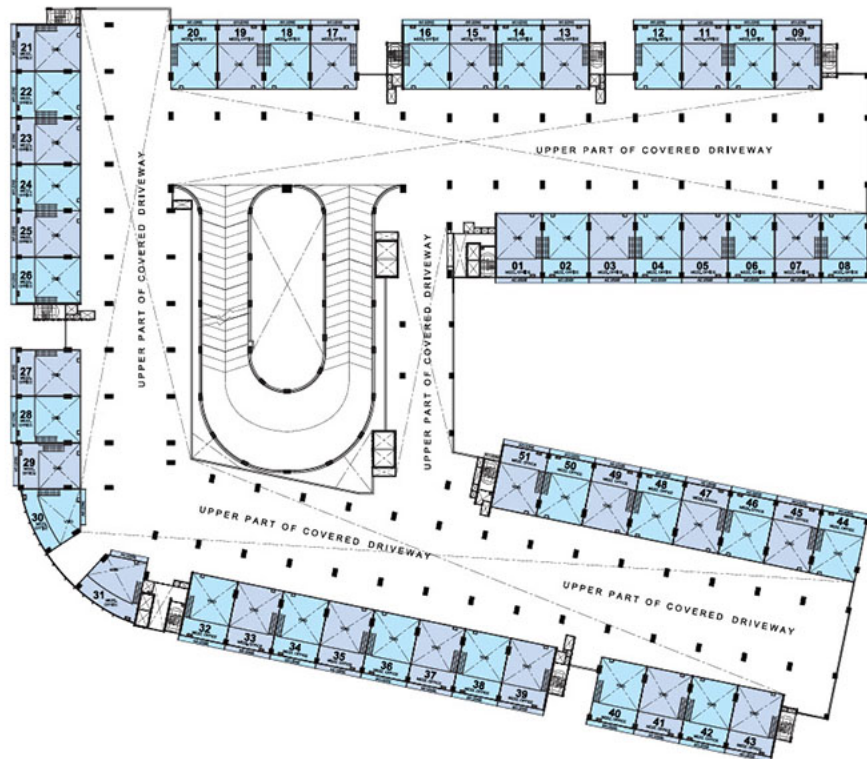
Note: All plans are meant for information only and may be changed at the sole discretion of the architect.

2ND STOREY (PRODUCTION UNITS)



- Note: (1) Typical units area 242sqm, except #02-29 (232sqm), #02-30 (215sqm) and #02-31 (232sqm).
 (2) Unit area includes void, mezzanine office & a/c ledges on 2nd storey & mezzanine office.
 (3) All plans are meant for information only and may be changed at the sole discretion of the architect.

3RD, 5TH - 7TH STOREY (MEZZANINE)



Note: All plans are meant for information only and may be changed at the sole discretion of the architect.

3RD, 5TH - 7TH STOREY (PRODUCTION UNITS)

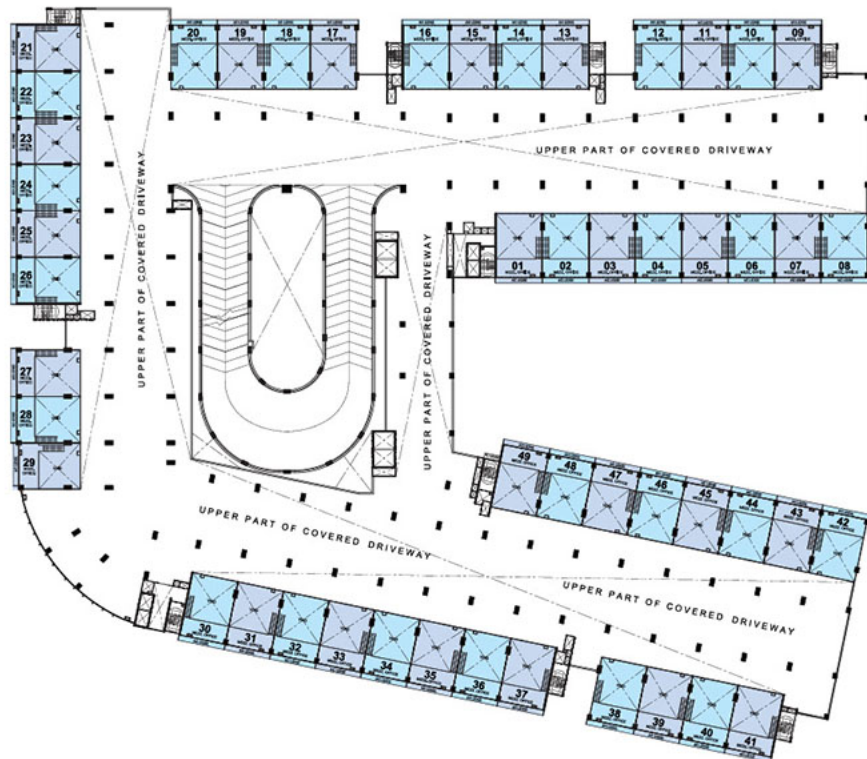


Note: (1) Typical units area 242sqm, except #03/05/06/07-29 (232sqm), #03/05/06/07-30 (215sqm) and #03/05/06/07-31 (232sqm).

(2) Unit area includes void, mezzanine office & a/c ledges on 3rd, 5th - 7th storey & mezzanine office.

(3) All plans are meant for information only and may be changed at the sole discretion of the architect.

4TH STOREY (MEZZANINE)



Note: All plans are meant for information only and may be changed at the sole discretion of the architect.

4TH STOREY (PRODUCTION UNITS)



Note: (1) Typical units area 242sqm, except #04-29 (232sqm).

(2) Unit area includes void, mezzanine office & a/c ledges on 2nd storey & mezzanine office.

(3) All plans are meant for information only and may be changed at the sole discretion of the architect.

8TH STOREY (PRODUCTION UNITS)

LOWER STOREY



Note: (1) Typical units area 207sqm.

(2) Unit area includes void, mezzanine office & a/c ledges at lower storey, upper storey & mezzanine office.

(3) All plans are meant for information only and may be changed at the sole discretion of the architect.

9TH STOREY (PRODUCTION UNITS) UPPER STOREY



Note: All plans are meant for information only and may be changed at the sole discretion of the architect.