

**SHOP 1**

42 sq m / 452 sq ft

#01-01



**SHOP 2**

40 sq m / 431 sq ft

#01-02



**SHOP 3**

40 sq m / 431 sq ft

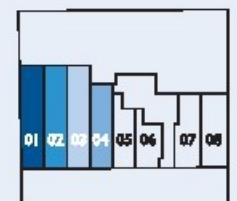
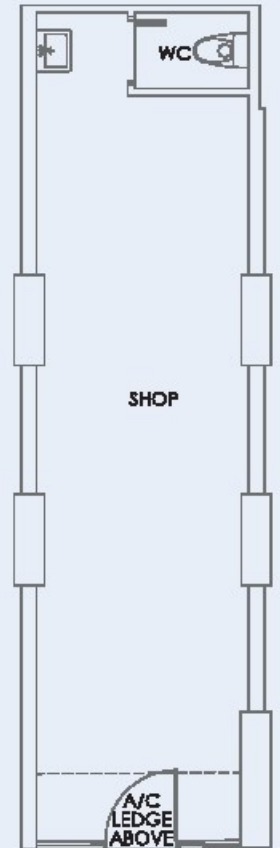
#01-03



**SHOP 4**

33 sq m / 355 sq ft

#01-04



Note: Unit area includes AC ledge and/or AC accessory lot and/or void and/or roof terrace where applicable. All plans are subject to amendments as approved by the relevant authorities.



1ST STOREY PLAN

### SHOP 5

25 sq m / 269 sq ft

#01-05

### SHOP 6

23 sq m / 248 sq ft

#01-06

### SHOP 7

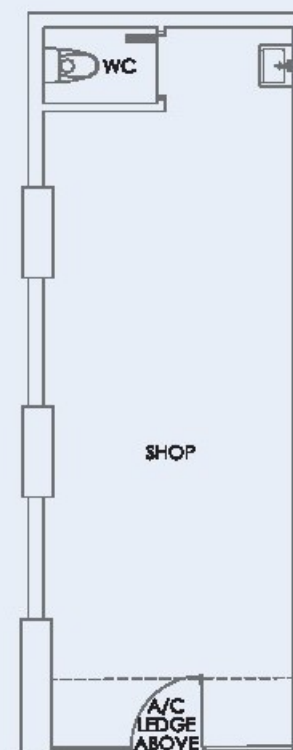
31 sq m / 334 sq ft

#01-07

### SHOP 8

34 sq m / 366 sq ft

#01-08



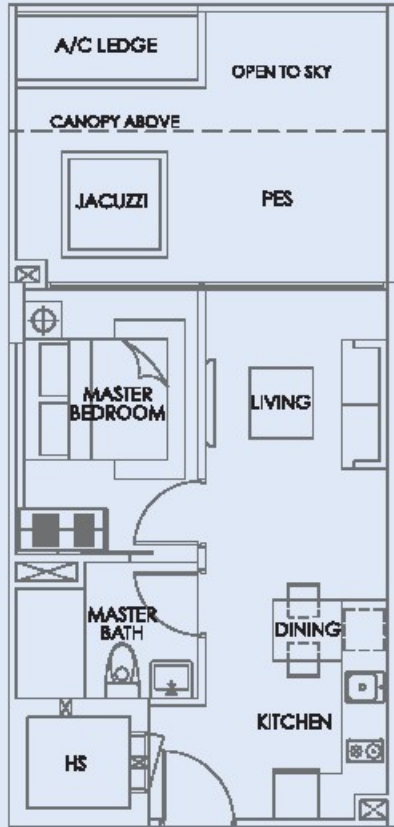
1ST STOREY PLAN

Note: Unit area includes A/C ledge and/or A/C accessory lot and/or void and/or roof terrace where applicable. All plans are subject to amendments as approved by the relevant authorities.

**TYPE AI-1**

1 bedroom  
54 sq m / 581 sq ft

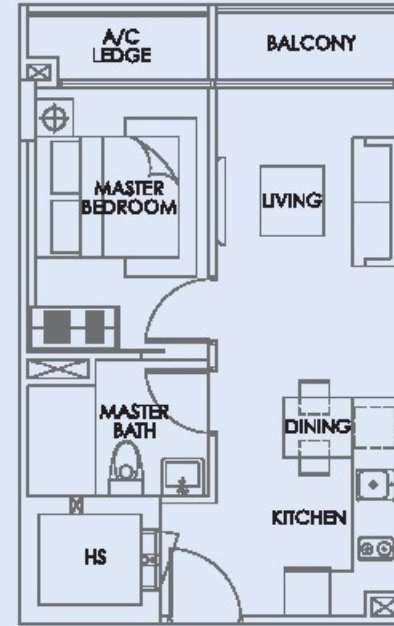
#02-01



**TYPE AIa**

1 bedroom  
40 sq m / 431 sq ft

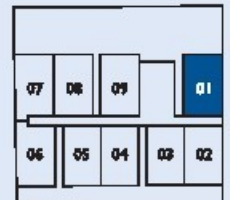
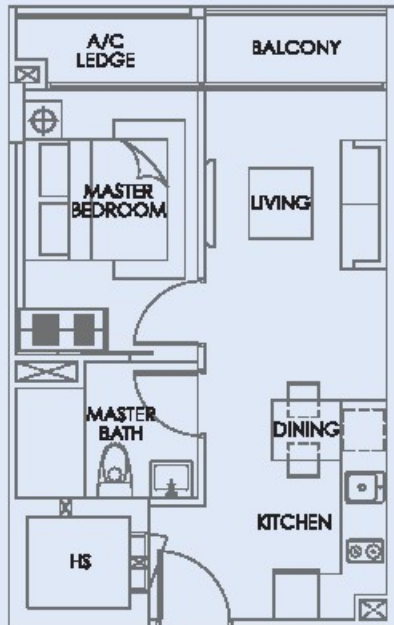
#03-01



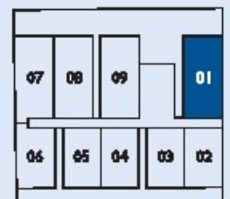
**TYPE AI**

1 bedroom  
40 q m / 431 sq ft

#04-01 to #05-01



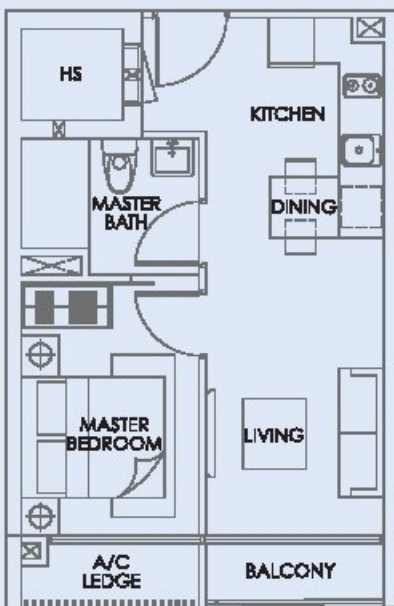
3RD STOREY PLAN  
TO 6TH STOREY PLAN



1<sup>ST</sup> STOREY PLAN

Note: Link area includes AC ledge and/or AC accessory lot and/or void and/or roof terrace where applicable. All plans are subject to amendments as approved by the relevant authorities.

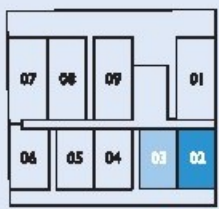
**TYPE A2**  
 1 bedroom  
 38 sq m / 409 sq ft  
 #02-02



**TYPE A2-1**  
 1 bedroom  
 38 sq m / 409 sq ft  
 #03-02 to #05-02



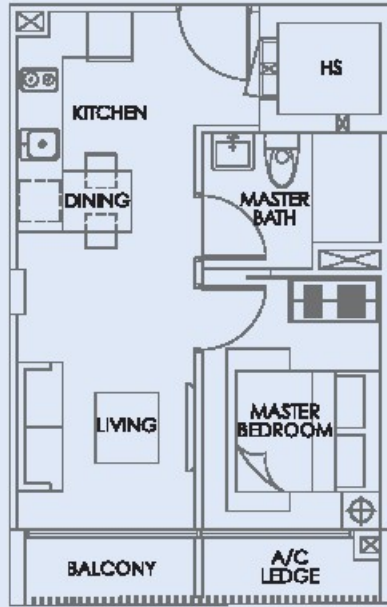
**TYPE A3**  
 1 bedroom  
 38 sq m / 409 sq ft  
 #02-03 to #04-03



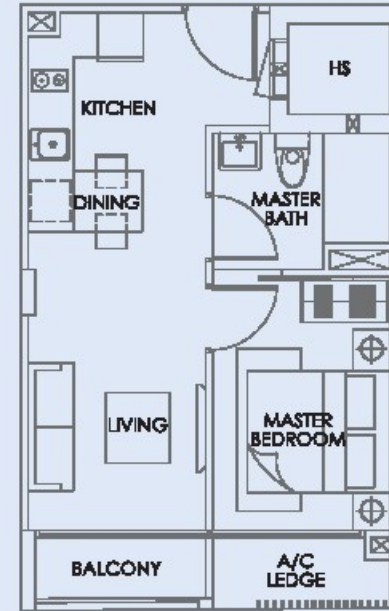
2ND STOREY PLAN  
 TO 5TH STOREY PLAN

Note: Unit area includes AC ledge and/or AC accessory lot and/or void and/or roof terrace where applicable. All plans are subject to amendments as approved by the relevant authorities.

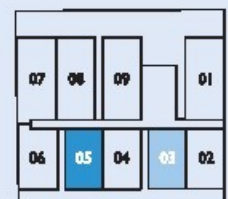
**TYPE A3-1**  
 1 bedroom  
 38 sq m / 409 sq ft  
 #05-03



**TYPE A3a**  
 1 bedroom  
 38 sq m / 409 sq ft  
 #02-05 to #04-05



**TYPE A3a-1**  
 1 bedroom  
 38 sq m / 409 sq ft  
 #05-05



Note: Unit area includes A/C ledge and/or A/C accessory lot and/or void and/or roof terrace where applicable. All plans are subject to amendments as approved by the relevant authorities.

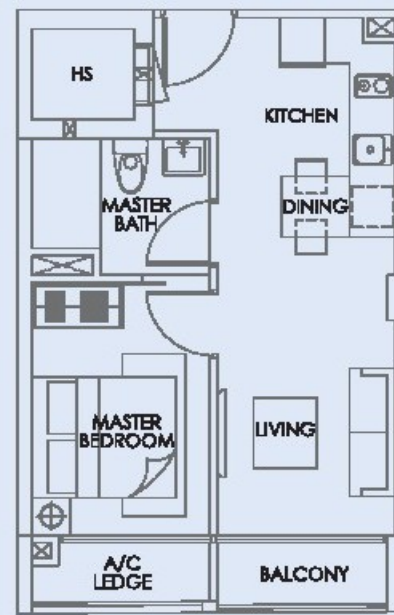
2ND STOREY PLAN  
 TO 5TH STOREY PLAN



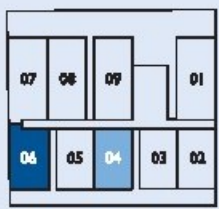
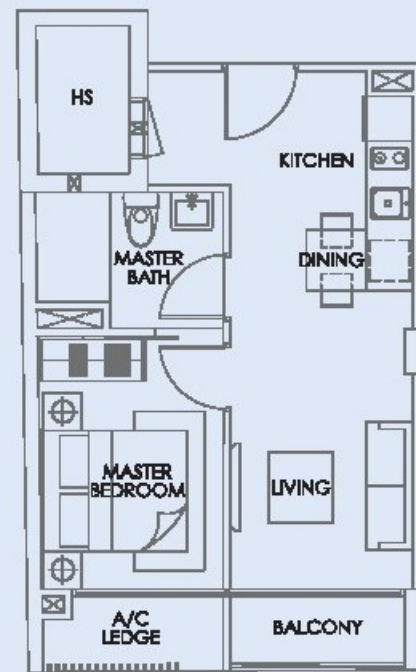
**TYPE A4**  
 1 bedroom  
 38 sq m / 409 sq ft  
 #02-04



**TYPE A4-I**  
 1 bedroom  
 38 sq m / 409 sq ft  
 #03-04 to #05-04



**TYPE A5**  
 1 bedroom  
 41 sq m / 441 sq ft  
 #02-06 to #05-06



2ND STOREY PLAN  
 TO 4TH STOREY PLAN

Note: Unit area includes A/C ledge and/or A/C accessory lot and/or void and/or roof terrace where applicable. All plans are subject to amendments as approved by the relevant authorities.

**TYPE A6**

1 bedroom  
42 sq m / 452 sq ft

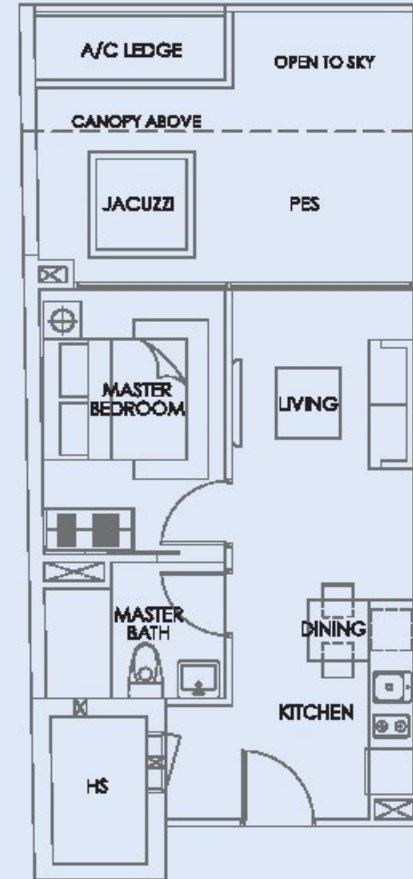
#03-07 to #05-07



**TYPE A6-2**

1 bedroom  
56 sq m / 603 sq ft

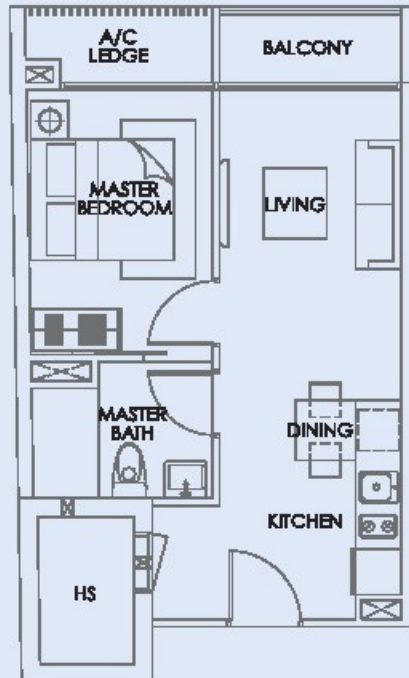
#02-07



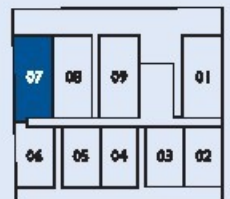
**TYPE A6-1**

1 bedroom  
42 sq m / 452 sq ft

#06-07



3RD STOREY PLAN  
TO 6TH STOREY PLAN

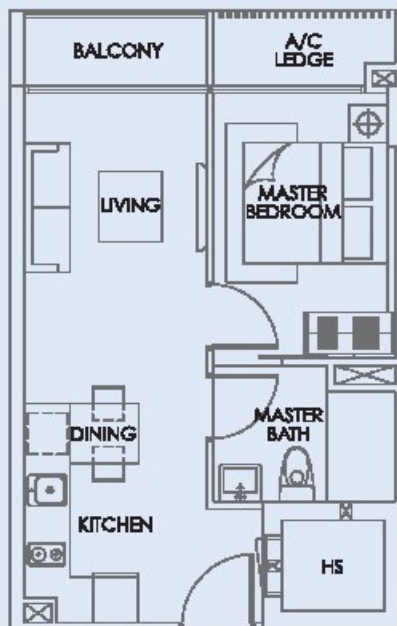


2ND STOREY PLAN

Note: Unit area includes AC ledge and/or AC necessary lot and/or void and/or roof terrace where applicable. All plans are subject to amendments as approved by the relevant authorities.

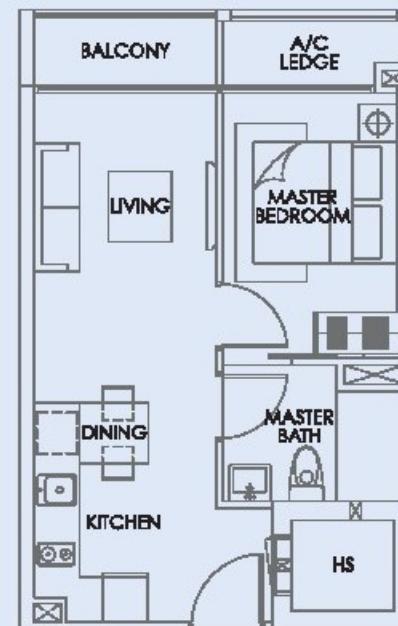
**TYPE A7**  
1 bedroom  
40 sq m / 431 sq ft

#03-08



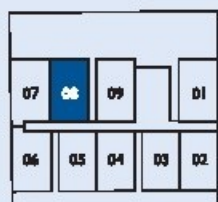
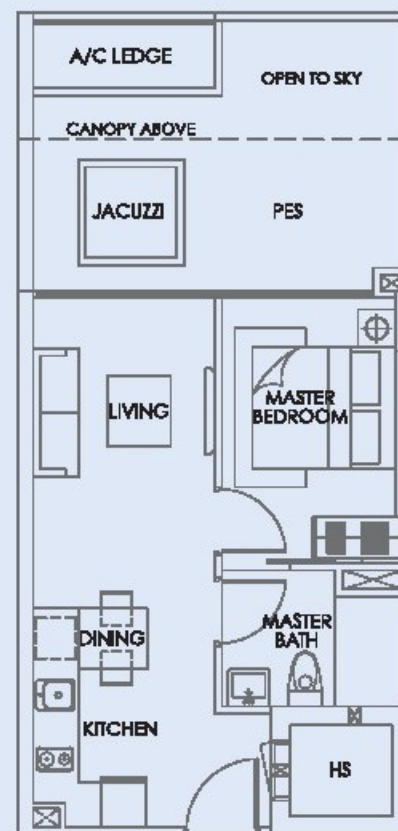
**TYPE A7-1**  
1 bedroom  
40 sq m / 431 sq ft

#04-08 to #06-08

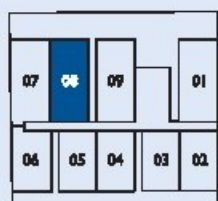


**TYPE A7-2**  
1 bedroom  
54 sq m / 581 sq ft

#02-08



3RD STOREY PLAN  
TO 6TH STOREY PLAN



2ND STOREY PLAN

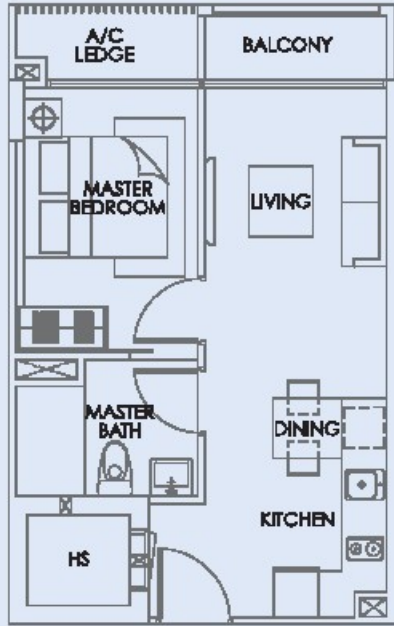
Note: Unit area includes A/C ledge and/or A/C accessory list and/or void and/or roof terrace where applicable. All plans are subject to amendments as approved by the relevant authorities.



**TYPE A8**

1 bedroom  
40 sq m / 431 sq ft

#03-09 to #05-09



**TYPE A8-2**

1 bedroom  
54 sq m / 581 sq ft

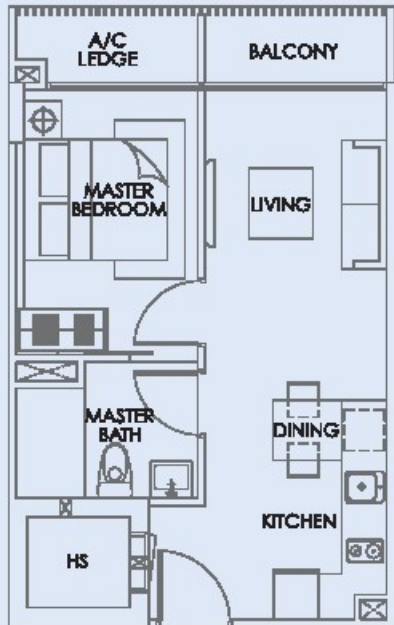
#02-09



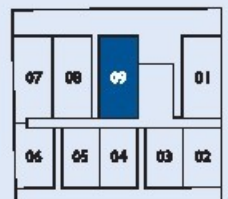
**TYPE A8-1**

1 bedroom  
40 sq m / 431 sq ft

#06-09



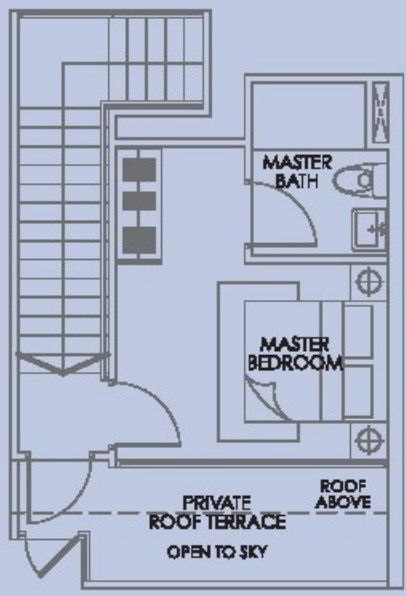
3RD STOREY PLAN  
TO 6TH STOREY PLAN



2ND STOREY PLAN

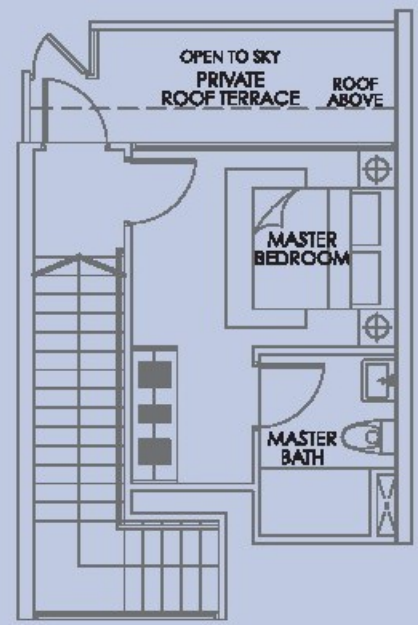
Note: Unit area includes A/C ledge and/or A/C accessory lot and/or void and/or roof terrace where applicable. All plans are subject to amendments as approved by the relevant authorities.

**TYPE PH-1**  
 1 bedroom  
 75 sq m / 807 sq ft  
 #06-01



UPPER STOREY

**TYPE PH-2**  
 1 bedroom  
 75 sq m / 807 sq ft  
 #06-02



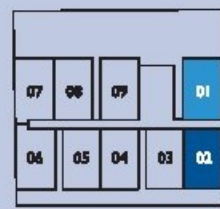
UPPER STOREY



LOWER STOREY



LOWER STOREY



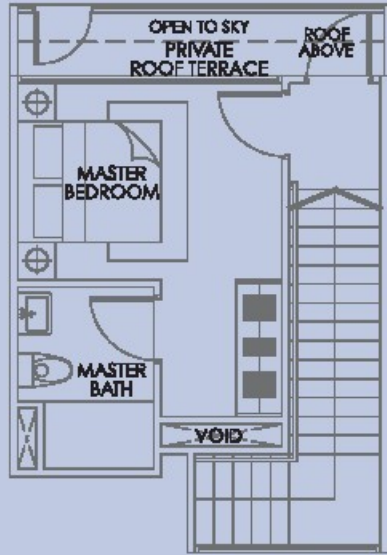
6TH STOREY PLAN

Note: Unit area includes A/C ledge and/or A/C accessory lot and/or void and/or roof terrace where applicable. All plans are subject to amendments as approved by the relevant authorities.

**TYPE PH-3**

1 bedroom  
72 sq m / 775 sq ft

#06-03

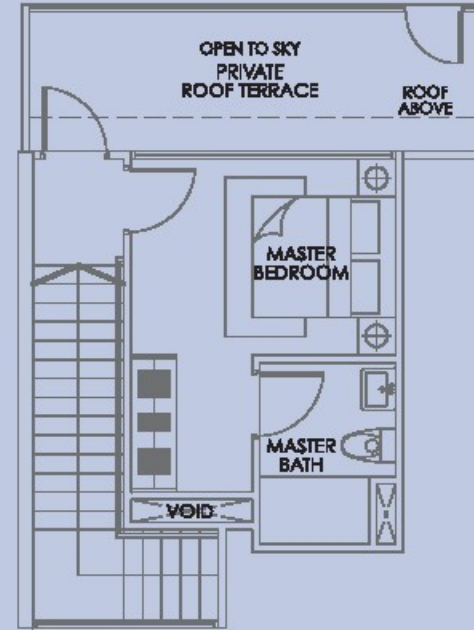


UPPER STOREY

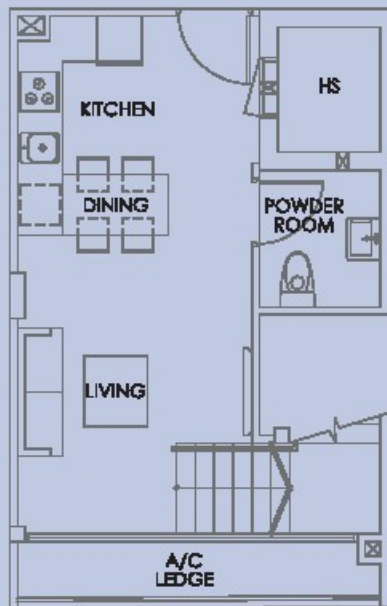
**TYPE PH-4**

1 bedroom  
79 sq m / 850 sq ft

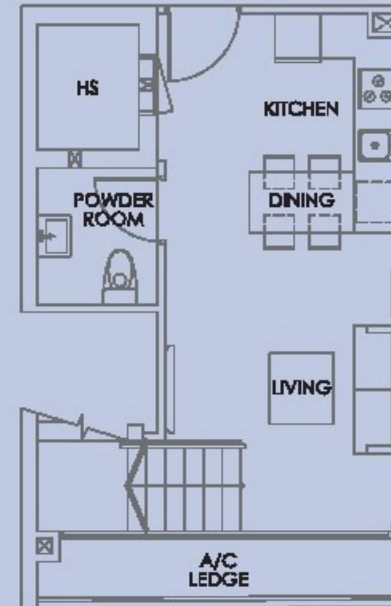
#06-04



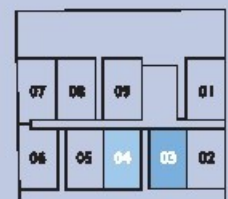
UPPER STOREY



LOWER STOREY



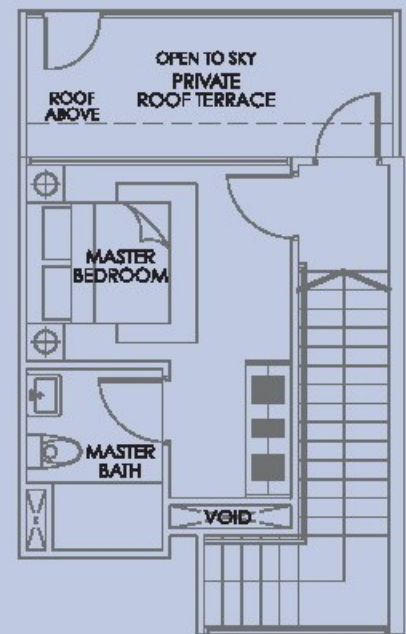
LOWER STOREY



Note: Unit area includes AC ledge and/or AC accessory lot and/or void and/or roof terrace where applicable. All plans are subject to amendments as approved by the relevant authorities.

**TYPE PH-5**  
 1 bedroom  
 77 sq m / 829 sq ft

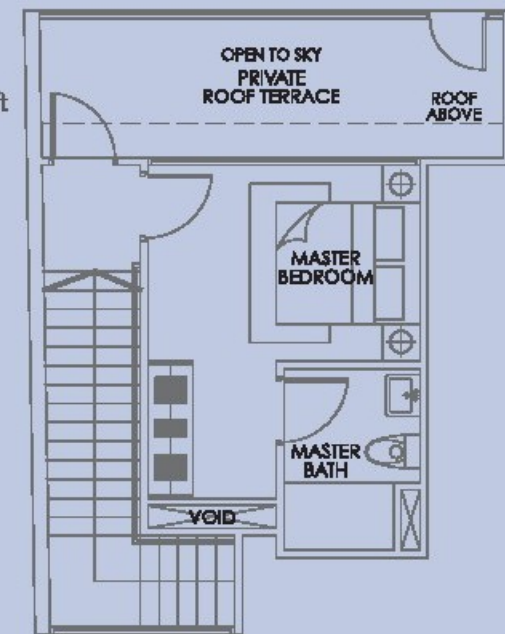
#06-05



UPPER STOREY

**TYPE PH-6**  
 1 bedroom  
 82 sq m / 883 sq ft

#06-06



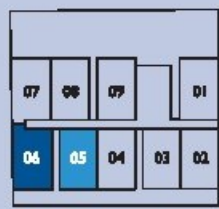
UPPER STOREY



LOWER STOREY



LOWER STOREY



6TH STOREY PLAN

Note: Unit area includes A/C ledge and/or A/C accessory lot and/or void and/or roof terrace where applicable. All plans are subject to amendments as approved by the relevant authorities.